

BLUE RAIDER SOCCER

2025 MATCH NOTES



2025 SCHEDULE & RESULTS

| Date | Opponent | Time/Result |
|-----------|------------------|-------------|
| AUGUST | | |
| 14 | at Belmont | W, 2-1 |
| 17 | JACKSON STATE | W, 3-0 |
| 21 | ALABAMA A&M | W, 2-0 |
| 24 | INDIANA STATE | T, 2-2 |
| 28 | at South Alabama | L, 0-4 |
| 31 | WEST GEORGIA | W, 3-0 |
| SEPTEMBER | | |
| 4 | at Lipscomb | 6 p.m. |
| 7 | VANDERBILT | 6 P.M. |
| 11 | TENNESSEE TECH | 7 P.M. |
| 14 | at Evansville | 4 p.m. |
| 21 | JAX STATE * | 1 P.M. |
| 27 | at WKU * | 6 p.m. |

| | | |
|---------|---------------------|---------|
| OCTOBER | | |
| 2 | at Sam Houston * | 7 p.m. |
| 5 | at Louisiana Tech * | 1 p.m. |
| 12 | FIU * | 12 P.M. |
| 16 | NEW MEXICO STATE * | 7 P.M. |
| 19 | UTEP * | 1 P.M. |
| 25 | at Kennesaw State * | 6 p.m. |

| | | |
|----------|------------------------------|--|
| NOVEMBER | | |
| 2-7 | Conference USA Championships | |

All times Central and subject to change
Home Games are ALL CAPS and bold
* Conference USA game

MTSU STAT LEADERS

| | SEASON | CAREER |
|---------|-------------|--------|
| GOALS | 3 FRASER | 6 |
| ASSISTS | 3 PETTERSEN | 7 |
| POINTS | 7 2 TIED | 7 |
| SAVES | 11 GRONAUER | 102 |

LIPSCOMB STAT LEADERS

| | SEASON | CAREER |
|---------|------------|--------|
| GOALS | 1 4 TIED | 1 |
| ASSISTS | 2 FERRANTE | 2 |
| POINTS | 2 5 TIED | 2 |
| SAVES | 7 GIORGIO | 37 |

VANDERBILT STAT LEADERS

| | SEASON | CAREER |
|---------|------------|--------|
| GOALS | 3 3 TIED | 3 |
| ASSISTS | 3 PENTZ | 3 |
| POINTS | 7 3 TIED | 7 |
| SAVES | 6 WOJDELKO | 95 |

MATCHUPS

MATCH 7: MTSU (4-1-1) VS LIPSCOMB (2-2-1)

Thursday, Sept. 4, 2025 • 6 p.m. • Nashville, Tenn. • ESPN+



BLUE RAIDERS

Head Coach: Aston Rhoden
Record at MTSU: 218-179-43 / 24th Season
Career Record: 257-229-44 / 29th Season



BISONS

Head Coach: Kevin O'Brien
Record at Lipscomb: 142-77-36 / 14th Season
Career Record: 142-77-36 / 14th Season

SERIES HISTORY

Overall: 6-2-2 • In Nashville: 3-1-2 • Last Meeting: 8/31/23 L, 2-4 Murfreesboro, Tenn.

MATCH 8: MTSU (4-1-1) VS VANDERBILT (4-1)

Sunday, Sept. 7, 2025 • 6 p.m. • Murfreesboro, Tenn. • ESPN+



BLUE RAIDERS

Head Coach: Aston Rhoden
Record at MTSU: 218-179-43 / 24th Season
Career Record: 257-229-44 / 29th Season



COMMODORES

Head Coach: Darren Ambrose
Record at Vanderbilt: 112-62-30 / 11th Season
Career Record: 260-135-65 / 26th Season

SERIES HISTORY

Overall: 1-8 • In Murfreesboro: 0-4 • Last Meeting: 9/8/24 L, 0-3 Nashville, Tenn.

QUICK KICKS

• **Senior Tops the Scoring Chart:** Senior forward Taijah Fraser ranks No. 3 nationally in game-winning goals and recorded her third goal of the season in the win over West Georgia, adding to earlier scores on Aug. 14 at Belmont and Aug. 21 against Alabama A&M.

• **90 Minutes, Zero Goals Allowed:** Goalkeeper Demi Gronauer recorded her second shutout of the season, a season high, after playing all 90 minutes against both West Georgia and Alabama A&M.

• **Defending Dean A. Hayes:** The Blue Raiders' 3-0-1 start at home marks their best home record since 2006, remaining unbeaten through the month of August.

• **First Goals Off the Head:** Freshmen Stenehjelm & Newton each netted their first career goals on headers from set pieces — Newton vs. Alabama A&M, Stenehjelm vs. Indiana State.

• **A Breakout Performance:** Freshman forward Alli Craig recorded her first career brace in Sunday's 3-0 win over Jackson State. Craig converted both of her shots on goal, finishing the week with a 66.7% shot percentage in 93 minutes of action.

• **First Save Magic:** Freshman goalkeeper Ella Sellers

MATCHUP INSIGHTS



| W-L-D | 4-1-1 | 2-2-1 | 4-1-0 |
|--------------------------|-------|-------|-------|
| GOALS PER GAME | 2.00 | 2.23 | 3.40 |
| SHOTS PER GAME | 12.7 | 19.9 | 21.40 |
| SHOT PERCENTAGE | 0.158 | 0.112 | 0.159 |
| SHOTS ON GOAL PERCENTAGE | 0.566 | 0.457 | 0.417 |
| GOALS ALLOWED PER GAME | 1.400 | 1.600 | 0.875 |
| SAVES PER GAME | 2.60 | 2.80 | 1.80 |
| SAVE PERCENTAGE | 0.650 | 0.636 | 0.818 |
| PENALTIES | 0-0 | 2-2 | 1-1 |
| FOULS PER GAME | 8.00 | 9.40 | 10.40 |
| YELLOW - RED CARDS | 5-0 | 18-0 | 5-0 |

LAST MATCH'S STARTING XI

| Pos | # | Name | Note | Pos | # | Name | Note |
|-----|----|------------|---|-----|----|-----------|---|
| GK | 0 | Gronauer | Second shutout game of the season | MF | 2 | Murphy | Tallied first goal of the season |
| D | 6 | Sterbenz | Recorded one shot and played for 90 minutes | MF | 16 | Jauregui | Tallied first goal of the season |
| D | 22 | Brown | Played for 90 minutes | F | 20 | Kvaale | Recorded one assist for Murphy's goal |
| D | 33 | Newton | Played for 90 minutes | F | 7 | Fraser | Recorded her third goal of the season |
| D | 5 | Delaney | Tallied one assist for Fraser's goal | F | 22 | Pettersen | 2 assists for Murphy and Jauregui's goals |
| MF | 12 | Stenehjelm | Registered one shot on goal | | | | |



QUICK FACTS

UNIVERSITY

Location: Murfreesboro, Tenn.

Founded: 1911

Enrollment: 20,183

President: Dr. Sidney McPhee

MTSU ATHLETICS

Director of Athletics: Chris Massaro

Nickname: Blue Raiders

Colors: Royal Blue & White

Affiliation: Division I

Conference: Conference USA

PROGRAM HISTORY

Founded: 1996

All-Time Record: 264-239-49

NCAA Appearances: 1 (2010)

Conference Regular Season Titles: 2 (2004, 2012)

Conference Tournament Titles: 1 (2010)

DEAN A. HAYES SOCCER STADIUM

Home Field: Dean A. Hayes Track & Soccer Stadium

Opened: Fall 1998

Capacity: 1,500

Surface: Grass

COACHING STAFF

Head Coach: Aston Rhoden

Alma Mater: Alabama-Huntsville '89

Year at MTSU: 24th

Record at MTSU: 218-179-43

Overall Record: 257-229-44

Associate Head Coach: Hannah Hoefs

Alma Mater: Loyola (Md.) '20

Year at MTSU: Fourth

Assistant Coach: Sean Donahue

Alma Mater: Alabama '16

Year at MTSU: Second

Graduate Assistant: Lauren Moellering

Alma Mater: Spring Arbor '23

Year at MTSU: First

MEDIA RELATIONS

Soccer Contact: Edly Termilien

Email: edly.termilien@mtsu.edu

Cell Phone: (254) 466-2699

Asst. Director (Oversee SOC): Logan Hasselbach

Email: logan.hasselbach@mtsu.edu

Cell Phone: (813) 895-0895

made her first career start and recorded her first save and shutout, stopping Jackson State's lone shot on goal Sunday.

• **Drought Over, Raiders Rolling:** The Blue Raiders are unbeaten through four straight matches, starting 3-1-1 for the first time since 2006.

• **First-Time Foes:** Middle Tennessee will face Indiana State on Aug. 24, and West Georgia on Aug. 31, marking the first meeting against both programs in school history.

• **Gronauer in Goal Again:** Sophomore Demi Gronauer returns to MTSU after a standout 2024 season, earning CUSA All-Tournament honors with five shutouts and 4.79 saves per match, second-most in the conference.

• **Kvaale Back in Blue:** Senior Idun Kvaale returns after earning 2024 All-CUSA Third Team honors, finishing second on the team with five goals and adding three assists.

• **Experience Meets Youth:** The 2025 roster features 11 freshmen and 12 seniors and graduate students, blending veteran leadership with emerging talent.

• **International Impact:** MTSU players hail from 10 countries; Bulgaria, Canada, New Zealand, Hungary, Mexico, Spain, Norway, Lithuania, England, and the United States.

• **Home Sweet Home:** MTSU posted a 4–1 home record in 2024, scoring 18 goals in 5 matches. The team averaged 3.6 goals per game at home.

• **Offensive Powerhouse:** The Blue Raiders averaged 2.29 goals per game in the 2024 conference slate, leading Conference USA. MTSU recorded a team-high 18 points, including six goals and six assists, against Bellarmine (9/1/2024).

• **Academic Excellence:** The Blue Raider soccer program earned the United Soccer Coaches College Team Academic Award for the 24th consecutive year, posting a cumulative GPA of 3.69 for the 2024–25 academic year.

• **Hometown Pride:** Senior defender Hannah Delaney (formerly Hannah Opie) returns for her final season in front of her hometown crowd in Murfreesboro, Tenn., after transferring from Chattanooga, where she appeared in 42 matches while recording 10 shots, three shots on goal, and logged 2,254 minutes.

• **New Talent Joins Blue Raiders:** The Blue Raiders added four transfers for 2025, including defender Hannah Delaney, midfielder Sandra Segovia del Hoyo from Valencia, Spain (Aquinas College), who helped her previous team win four straight Wolverine-Hoosier Athletic Conference titles and three WHAC Tournament Championships. Forward/midfielder Ximena Jauregui from Cancun, Mexico (Florida Tech/Bellevue), led her team in 2024 with 11 goals, 11 assists, and 33 points, earning NAIA Honorable Mention All-American honors. Senior forward Alexis “Lexi” Rabold from Acadia University started all 20 matches in 2024, recording a career-high eight goals and three assists for 19 points, highlighted by her first career brace against Cortland and two assists in a 5–2 win over Delaware Valley.

• **At the Helm:** Head Coach Aston Rhoden enters his 24th season leading the Blue Raiders. The Jamaica native has guided MTSU to three conference championships and enters the season with a 216-179-42 career record.

• **Fresh Faces, Big Goals:** The Blue Raiders welcomed their 2025 freshmen class: Ella Sellers (GK, Jefferson, Ga.), Charli Dunn (D/M, Auckland, NZ), Alli Craig (F, Woodstock, Ga.), Lilah Cornell (F, Chagrin Falls, Ohio), Annamaria Benke (M/F, Levendula, Hungary), Mya Stenehjem (M, Phoenix, Ariz.), Olivia Best (F, Apex, N.C.), Addie Martin (D, St. Louis, Mo.), Aive Andriuskeviciute (D/M, Vilnius, Lithuania), Maaja Fischer (M, Ontario, Canada), and Scottie Newton (D, Franklin, Tenn.).



2025 ROSTER

| No. | Name | Pronunciation | Pos. | Yr. | Ht. | Hometown / Previous School |
|-----|-------------------------|-----------------------------------|------|-----|-----|---|
| 0 | Demi Gronauer | GRO-now-er | GK | So. | 5-8 | Las Vegas, Nev. / Faith Lutheran HS |
| 00 | Emily McGrain | | GK | Sr. | 5-6 | Forest Hill, Md. / Bel Air HS |
| 1 | Ella Sellers | | GK | Fr. | 5-9 | Jefferson, Ga. / Jefferson HS |
| 2 | Hannah Murphy | | F/M | Jr. | 5-4 | Lakewood, Colo. / Lakewood HS |
| 3 | Megan Carroll | | M | Sr. | 5-3 | Maryville, Tenn. / Maryville HS |
| 4 | Yana Yordanova | YAH-nuh Yor-duh-NO-vuh | M | Sr. | 5-3 | Kyustendil, Bulgaria / 55 SOU Petko Karavelov |
| 5 | Hannah Delaney | | D | Sr. | 5-6 | Murfreesboro, Tenn. / Chattanooga |
| 6 | Sadie Sterbenz | STIR-benz | D | Jr. | 5-6 | Clarendon Hills, Ill. / Benet Academy |
| 7 | Taijah Fraser | TAY-zhuh FRAY-zhur | F | Sr. | 5-4 | Brampton, Canada / St. Edmund Campion |
| 8 | Charli Dunn | | D/M | Fr. | 5-5 | Auckland, New Zealand / Crossroads Flex HS |
| 9 | Alli Craig | | F | Fr. | 5-3 | Woodstock, Ga. / River Ridge HS |
| 10 | Lilah Cornell | LIE-luh | F | Fr. | 5-4 | Chagrin Galls, Ohio / Kenston HS |
| 11 | Annamaria Benke | AH-nuh-maria BEN-kay | M/F | Fr. | 5-5 | Levendula, Hungary/Secondary School of Economics |
| 12 | Mya Stenehjem | MAYA Sten-jem | M | Fr. | 5-6 | Phoenix, Ariz. / Pinnacle HS |
| 13 | Olivia Best | | F | Fr. | 5-5 | Apex, N.C. / Crossroads Flex HS |
| 14 | Jess Gray | | D | So. | 5-5 | Oxford, England / The Henley College |
| 16 | Ximena Jauregui | He-MEN-uh HOW-reh-gee | F/M | Gr. | 5-0 | Cancun, Mexico / Florida Tech |
| 17 | Addie Martin | | D | Fr. | 5-5 | St. Louis, Mo. / St. Joseph's Academy |
| 18 | Gabriela Shegota | Shuh-GO-tah | F | Sr. | 5-4 | Boca Raton, Fla. / Boca Raton Community HS |
| 19 | Sandra Segovia del Hoyo | Seh-GO-vee-uh del OY-oh | M | Gr. | 5-7 | Valencia, Spain / Aquinas College |
| 20 | Idun Kvaale | EE-dehn QUAL-ay | F | Sr. | 5-4 | Molde, Norway / Romsdal Videregaende Skole |
| 21 | Aive Andruiskeviciute | EYE-vuh Ann-droos-kev-uh-CHOO-teh | D/M | Fr. | 5-9 | Vilnius, Lithuania / Vilnius Ozas Gymnasium |
| 22 | Emma Pettersen | PET-er-sen | F | Sr. | 5-7 | Kristiansand, Norway/Kristiansand Katedralskole Gimle |
| 24 | Lexi Rabold | RAY-bold | F | Sr. | 5-9 | Laguna Beach, Calif. / Arcadia |
| 25 | Maaja Fischer | MAYA | M | Fr. | 5-8 | Ontario Canada / Northview Heights Secondary |
| 26 | Emma Brown | | D | Gr. | 5-8 | Middlesbrough, England / Stokesley Secondary |
| 33 | Scottie Newton | | D | Fr. | 5-9 | Franklin, Tenn. / Lipscomb Academy |

COACHES & SUPPORT STAFF

Head Coach: Aston Rhoden (ROAD-in)

Alabama-Huntsville '89 - 24th Season

Associate Head Coach: Hannah Hoefs (HAYFS)

Loyola (Md.) '20 - Fourth Season

Assistant Coach: Sean Donahue

Alabama '16 - Second Season

Graduate Assistant: Lauren Moellering (Mole-er-ing)

Spring Arbor '23 - First Season

Athletic Trainer: Alison Ness

West Virginia - 22nd Season

Strength & Conditioning Coach: Ashley McMasters

Stephen F. Austin '22, '24 - First Season



Detailed pronunciations can be
found on goblueraiders.com

BREAKDOWN

BY STATE & COUNTRY

United States (15), International (12)

Tennessee (3): Carroll, Delaney, Newton

Arizona (1): Stenehjem

California (1): Rabold

Colorado (1): Murphy

Florida (1): Shegota

Georgia (2): Sellers, Craig

Illinois (1): Sterbenz

Maryland (1): McGrain

Missouri (1): Martin

Nevada (1): Gronauer

North Carolina (1): Best

Ohio (1): Cornell

Bulgaria (1): Yordanova

Canada (2): Fraser, Fischer

England (2): Gray, Brown

Hungary (1): Benke

Lithuania (1): Andruiskeviciute

Mexico (1): Jauregui

New Zealand (1): Dunn

Norway (2): Kvaale, Pettersen

Spain (1): Segovia del Hoyo

BY CLASS

Freshman (11)

Sophomore (2)

Junior (2)

Senior (9)

Graduate (3)

BY POSITION

Goalkeeper (3)

Forward (11)

Midfielder (10)

Defender (8)

**Some players listed play up
to two positions*

2025 OVERALL STATISTICS

| Date | Opponent | Score | Att. |
|------------|------------------|-------|------|
| 08/14/2025 | at Belmont | W 2-1 | 160 |
| 08/17/2025 | Jackson St. | W 3-0 | 341 |
| 08/21/2025 | Alabama A&M | W 2-0 | 340 |
| 08/24/2025 | Indiana St. | T 2-2 | 230 |
| 08/28/2025 | at South Alabama | L 0-4 | 175 |
| 08/31/2025 | West Ga. | W 3-0 | 475 |

Team statistics

| | MTSU | OPP |
|------------------------|-------|-------|
| SHOT STATISTICS | | |
| Goals-Shot attempts | 12-76 | 7-40 |
| Goals scored per game | 2 | 1.17 |
| Shot pct. | .158 | .175 |
| Shots on goal-Attempts | 43-76 | 20-40 |
| SOG pct. | .566 | .500 |
| Shots/Game | 12.7 | 6.7 |
| Assists | 12 | 6 |
| GOAL BREAKDOWN | | |
| Total Goals | 12 | 7 |
| Penalty | 0 | 1 |
| Unassisted | - | - |
| Overtime | 0 | 0 |
| Goals scored average | 2 | 1.17 |
| CORNER KICKS | | |
| | 31 | 16 |
| PENALTY KICKS | | |
| | 0-0 | 1-1 |
| OFFSIDES | | |
| | 16 | 8 |
| PENALTIES | | |
| Fouls | 49 | 49 |
| Yellow cards | 5 | 7 |
| Red cards | 0 | 0 |
| ATTENDANCE | | |
| Total | 1386 | 335 |
| Dates/Avg Per Date | 4/347 | 2/168 |
| Neutral Site #/Avg | 0/0 | - |

| Record | Overall | Home | Away | Neutral |
|----------------|---------|-------|-------|---------|
| All Games | 4-1-1 | 3-0-1 | 1-1-0 | 0-0-0 |
| Conference | 0-0-0 | 0-0-0 | 0-0-0 | 0-0-0 |
| Non-Conference | 4-1-1 | 3-0-1 | 1-1-0 | 0-0-0 |

| # | Player | GP | G | A | PTS | SH | SH% | SOG | SOG% | GWG | PK-ATT |
|------------------|--------------------------|----------|-----------|-----------|-----------|-----------|-------------|-----------|-------------|----------|------------|
| 7 | Fraser, Taijah | 6 | 3 | 1 | 7 | 14 | .214 | 8 | .571 | 3 | 0-0 |
| 22 | Pettersen, Emma | 6 | 2 | 3 | 7 | 11 | .182 | 8 | .727 | 1 | 0-0 |
| 9 | Craig, Alli | 3 | 2 | 0 | 4 | 3 | .667 | 2 | .667 | 0 | 0-0 |
| 2 | Murphy, Hannah | 6 | 1 | 1 | 3 | 14 | .071 | 8 | .571 | 0 | 0-0 |
| 16 | Agosto Jauregui, Ximena | 6 | 1 | 1 | 3 | 10 | .100 | 4 | .400 | 0 | 0-0 |
| 12 | Stenehjelm, Mya | 6 | 1 | 0 | 2 | 3 | .333 | 3 | 1.000 | 0 | 0-0 |
| 33 | Newton, Scottie | 6 | 1 | 0 | 2 | 2 | .500 | 2 | 1.000 | 0 | 0-0 |
| 13 | Best, Olivia | 2 | 1 | 0 | 2 | 1 | 1.000 | 1 | 1.000 | 0 | 0-0 |
| 20 | Kvaale, Idun | 4 | 0 | 2 | 2 | 2 | .000 | 1 | .500 | 0 | 0-0 |
| 5 | Delaney, Hannah | 6 | 0 | 2 | 2 | 0 | .000 | 0 | .000 | 0 | 0-0 |
| 6 | Sterbenz, Sadie | 6 | 0 | 1 | 1 | 3 | .000 | 1 | .333 | 0 | 0-0 |
| 3 | Carroll, Megan | 6 | 0 | 1 | 1 | 2 | .000 | 2 | 1.000 | 0 | 0-0 |
| 4 | Yordanova, Yana | 6 | 0 | 0 | 0 | 5 | .000 | 1 | .200 | 0 | 0-0 |
| 19 | Segovia del Hoyo, Sandra | 5 | 0 | 0 | 0 | 2 | .000 | 0 | .000 | 0 | 0-0 |
| 11 | Benke, Annamaria | 6 | 0 | 0 | 0 | 2 | .000 | 1 | .500 | 0 | 0-0 |
| 10 | Cornell, Lilah | 6 | 0 | 0 | 0 | 1 | .000 | 0 | .000 | 0 | 0-0 |
| 24 | Rabold, Alexis | 4 | 0 | 0 | 0 | 1 | .000 | 1 | 1.000 | 0 | 0-0 |
| 26 | Brown, Emma | 6 | 0 | 0 | 0 | 0 | .000 | 0 | .000 | 0 | 0-0 |
| 1 | Sellers, Ella | 1 | 0 | 0 | 0 | 0 | .000 | 0 | .000 | 0 | 0-0 |
| 0 | Gronauer, Demi | 5 | 0 | 0 | 0 | 0 | .000 | 0 | .000 | 0 | 0-0 |
| 8 | Dunn, Charli | 4 | 0 | 0 | 0 | 0 | .000 | 0 | .000 | 0 | 0-0 |
| 21 | Andriuskeviciute, Aive | 3 | 0 | 0 | 0 | 0 | .000 | 0 | .000 | 0 | 0-0 |
| 14 | Gray, Jess | 3 | 0 | 0 | 0 | 0 | .000 | 0 | .000 | 0 | 0-0 |
| Total | | 6 | 12 | 12 | 36 | 76 | .158 | 43 | .566 | - | 0-0 |
| Opponents | | 6 | 7 | 6 | 20 | 40 | .175 | 20 | .500 | - | 1-1 |

| # | Goalie | GP | MIN. | GA | GA AVG | SAVES | PCT | W-L-T | SHO/CBO |
|------------------|----------------|----------|---------------|-----------|-------------|-----------|-------------|--------------|----------|
| 1 | Sellers, Ella | 1 | 90:00 | 0 | 0.00 | 1 | 1.000 | 1-0-0 | 1/0 |
| 0 | Gronauer, Demi | 5 | 450:00 | 7 | 1.40 | 11 | .611 | 3-1-1 | 2/0 |
| TM | TEAM | - | 00:00 | 0 | 0.00 | 1 | 1.000 | 0-0-0 | 0/0 |
| Total | | 6 | 540:00 | 7 | 1.17 | 13 | .650 | 4-1-1 | 3 |
| Opponents | | 6 | 540:00 | 12 | 2.00 | 31 | .721 | 1-4-1 | 1 |

Goals by Periods

| Team | 1st | 2nd | OT1 | OT2 | TOTAL |
|-----------|-----|-----|-----|-----|-------|
| MTSU | 6 | 6 | 0 | 0 | 12 |
| Opponents | 2 | 5 | 0 | 0 | 7 |

Shots by Periods

| Team | 1st | 2nd | OT1 | OT2 | TOTAL |
|-----------|-----|-----|-----|-----|-------|
| MTSU | 31 | 45 | 0 | 0 | 76 |
| Opponents | 14 | 26 | 0 | 0 | 40 |

Saves by Periods

| Team | 1st | 2nd | OT1 | OT2 | TOTAL |
|-----------|-----|-----|-----|-----|-------|
| MTSU | 5 | 8 | 0 | 0 | 13 |
| Opponents | 14 | 17 | 0 | 0 | 31 |

Corners by Periods

| Team | 1st | 2nd | OT1 | OT2 | TOTAL |
|-----------|-----|-----|-----|-----|-------|
| MTSU | 14 | 17 | 0 | 0 | 31 |
| Opponents | 4 | 12 | 0 | 0 | 16 |

Fouls by Periods

| Team | 1st | 2nd | OT1 | OT2 | TOTAL |
|-----------|-----|-----|-----|-----|-------|
| MTSU | 19 | 30 | 0 | 0 | 49 |
| Opponents | 22 | 27 | 0 | 0 | 49 |



RECORD SPLITS

| Situation | Ovr. | Conf. |
|-------------------|-------|-------|
| Overall | 4-1-1 | - |
| At Home | 3-0-1 | - |
| On the Road | 1-1-0 | - |
| Neutral | 0-0-0 | - |
| Leading at Half | 3-0-0 | - |
| Tied at Half | 1-0-1 | - |
| Trailing at Half | 0-1-0 | - |
| Scoring 0 Goals | 0-1-0 | - |
| Scoring 1 Goal | 0-0-0 | - |
| Scoring 2 Goals | 2-0-1 | - |
| Scoring 3 Goals | 2-0-0 | - |
| Scoring 4+ Goals | 0-0-0 | - |
| Allowing 0 Goals | 3-0-0 | - |
| Allowing 1 Goal | 1-0-0 | - |
| Allowing 2 Goals | 0-0-1 | - |
| Allowing 3 Goals | 0-0-0 | - |
| Allowing 4+ Goals | 0-1-0 | - |
| MT Outshoots Opp. | 4-0-1 | - |
| Shots Tied | 0-0-0 | - |
| Opp. Outshoots MT | 0-1-0 | - |
| In August | 4-1-1 | - |
| In September | 0-0-0 | - |
| In October | 0-0-0 | - |
| In November | 0-0-0 | - |
| On Sunday | 2-0-1 | - |
| On Monday | 0-0-0 | - |
| On Tuesday | 0-0-0 | - |
| On Wednesday | 0-0-0 | - |
| On Thursday | 2-1-0 | - |
| On Friday | 0-0-0 | - |
| On Saturday | 0-0-0 | - |
| White Uniform | 3-1-1 | - |
| Blue Uniform | 1-0-0 | - |
| Black Uniform | 0-0-0 | - |

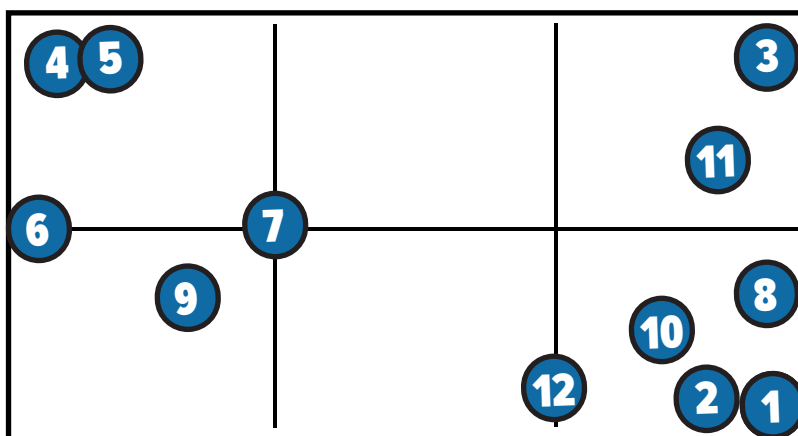
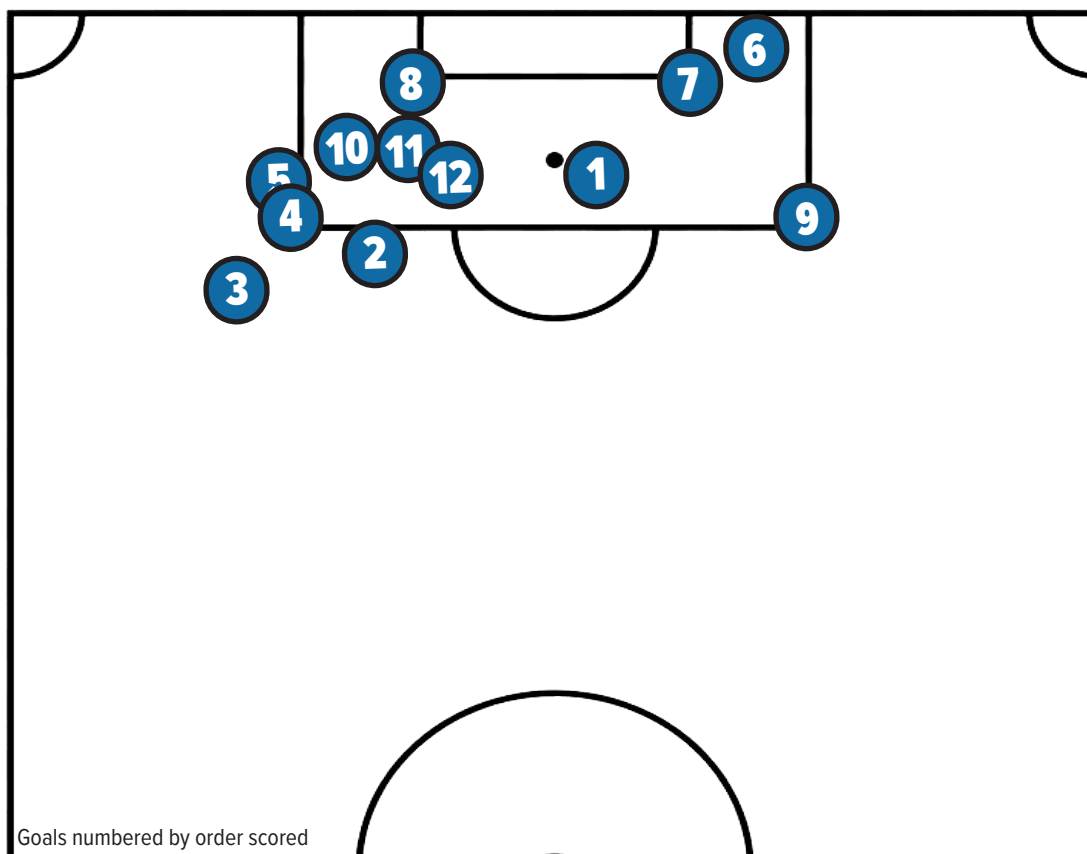
MTSU STAT LEADERS

| | |
|--------------------------|----------------|
| POINTS | Two tied |
| GOALS | Taijah Fraser |
| ASSISTS | Eight tied |
| SHOTS | Three tied |
| SHOTS ON GOAL | Two tied |
| SHOTS ON GOAL PERCENTAGE | Emma Pettersen |
| MINUTES | Emma Brown |

MATCH-BY-MATCH STARTERS

| Opponent | GK | | | | | | | | | | |
|------------------------|----------|----------|--------|---------|---------|-----------|-----------|----------|-----------|-------|--------|
| at Belmont | Gronauer | Sterbenz | Murphy | Carroll | Craig | Stenehjem | Jauregui | Kvaale | Pettersen | Brown | Newton |
| vs. Jackson State | Sellers | Sterbenz | Murphy | Carroll | Craig | Stenehjem | Jauregui | Kvaale | Pettersen | Brown | Newton |
| vs. Alabama A&M | Gronauer | Sterbenz | Murphy | Carroll | Craig | Stenehjem | Jauregui | Kvaale | Pettersen | Brown | Newton |
| vs. Indiana State | Gronauer | Sterbenz | Murphy | Carroll | Delaney | Fraser | Stenehjem | Jauergui | Pettersen | Brown | Newton |
| at South Alabama | Gronauer | Sterbenz | Murphy | Carroll | Delaney | Fraser | Stenehjem | Jauergui | Pettersen | Brown | Newton |
| vs. West Georgia | Gronauer | Sterbenz | Murphy | Delaney | Fraser | Stenehjem | Jauregui | Kvaale | Pettersen | Brown | Newton |
| at Lipscomb | | | | | | | | | | | |
| vs. Vanderbilt | | | | | | | | | | | |
| vs. Tennessee Tech | | | | | | | | | | | |
| at Evansville | | | | | | | | | | | |
| vs. Jacksonville State | | | | | | | | | | | |
| at WKU | | | | | | | | | | | |
| at Sam Houston | | | | | | | | | | | |
| at Louisiana Tech | | | | | | | | | | | |
| vs. FIU | | | | | | | | | | | |
| vs. New Mexico State | | | | | | | | | | | |
| vs. UTEP | | | | | | | | | | | |
| at Kennesaw State | | | | | | | | | | | |

BLUE RAIDERS GOAL MAP



BREAKDOWN

by Player

Craig: 2
Best: 1
Pettersen: 2
Fraser: 3
Stenehjelm: 1
Newton: 1
Jauregui: 1
Murphy: 1

by Assist

Unassisted: 1
Assisted: 11

by Match Result

W: 10
L: 0
T: 2

by Location

Home: 10
Away: 2

by 30-Minute Interval

1-30: 4
31-60: 3
61-90: 5

by Score at Time of Goal

0-0: 5
0-1: 0
1-0: 4
1-1: 1
1-2: 0
2-0: 2



0

Demi
GRONAUER

So. • GK • 5-8 • Las Vegas, Nev. • Faith Lutheran HS

CAREER STATISTICS

| SEASON | TEAM | GP-GS | Minutes | GA | GAAvg | Saves | Save% | W | L | T | SHO/CBO |
|---------|------|---------|---------|----|-------|-------|-------|----|----|---|---------|
| 2024-25 | MTSU | 19 - 19 | 1715:51 | 34 | 1.79 | 91 | .728 | 8 | 10 | 1 | 4/1 |
| 2025-26 | MTSU | 5 - 5 | 450:00 | 7 | 1.4 | 11 | .611 | 3 | 1 | 1 | 2/0 |
| TOTAL | | 24 - 24 | 2165:51 | 41 | 1.71 | 102 | .713 | 11 | 11 | 2 | 6/1 |

SINGLE-MATCH CAREER HIGHS

| Statistic | Value |
|-----------|--------------------------|
| Saves | 10 at Louisiana 08/22/24 |

2025 MATCH-BY-MATCH

| Date | Opponent | SCORE | GP | GS | Minutes | GA | GAAVG | Saves | Save% | W | L | T | SHO/CBO |
|------------|------------------|-------|----|----|---------|----|-------|-------|-------|---|---|---|---------|
| 08/14/2025 | at Belmont | 2-1 | * | * | 90:00 | 1 | 1.00 | 4 | .800 | 1 | 0 | 0 | 0/0 |
| 08/21/2025 | Alabama A&M | 2-0 | * | * | 90:00 | 0 | 0.00 | 2 | 1.000 | 2 | 0 | 0 | 1/0 |
| 08/24/2025 | Indiana St. | 2-2 | * | * | 90:00 | 2 | 2.00 | 1 | .333 | 2 | 0 | 1 | 0/0 |
| 08/28/2025 | at South Alabama | 0-4 | * | * | 90:00 | 4 | 4.00 | 4 | .500 | 2 | 1 | 1 | 0/0 |
| 08/31/2025 | West Ga. | 3-0 | * | * | 90:00 | 0 | 0.00 | 0 | .000 | 3 | 1 | 1 | 1/0 |
| Totals | | | 5 | 5 | 450:00 | 7 | 1.40 | 11 | .611 | 3 | 1 | 1 | 2/0 |

BIO



00

Emily
McGRAIN

Sr. • GK • 5-8 • Forest Hill, Md. • Bel Air HS

CAREER STATISTICS

| SEASON | TEAM | GP-GS | Minutes | GA | GAAvg | Saves | Save% | W | L | T | SHO/CBO |
|---------|------|-------|---------|----|-------|-------|-------|---|---|---|---------|
| 2023-24 | MTSU | 1 - 0 | 26:54 | 0 | 0 | 0 | .000 | 0 | 0 | 0 | 0/1 |
| TOTAL | | 1 - 0 | 26:54 | 0 | 0 | 0 | .000 | 0 | 0 | 0 | 0/1 |

SINGLE-MATCH CAREER HIGHS

2025 MATCH-BY-MATCH

BIO





1

Ella
SELLERS

Fr. • GK • 5-9 • Jefferson Ga. • Jefferson HS

CAREER STATISTICS

| SEASON | TEAM | GP-GS | Minutes | GA | GAAvg | Saves | Save% | W | L | T | SHO/CBO |
|---------|------|-------|---------|----|-------|-------|-------|---|---|---|---------|
| 2025-26 | MTSU | 1 - 1 | 90:00 | 0 | 0 | 1 | 1.000 | 1 | 0 | 0 | 1/0 |
| TOTAL | | 1 - 1 | 90:00 | 0 | 0 | 1 | 1.000 | 1 | 0 | 0 | 1/0 |

SINGLE-MATCH CAREER HIGHS

| Statistic | Value |
|-----------|---------------------------|
| Saves | 1 vs Jackson St. 08/17/25 |

2025 MATCH-BY-MATCH

| Date | Opponent | SCORE | GP | GS | Minutes | GA | GA AVG | Saves | Save% | W | L | T | SHO/CBO |
|------------|-------------|-------|----|----|---------|----|--------|-------|-------|---|---|---|---------|
| 08/17/2025 | Jackson St. | 3-0 | * | * | 90:00 | 0 | 0.00 | 1 | 1.000 | 1 | 0 | 0 | 1/0 |
| Totals | | | 1 | 1 | 90:00 | 0 | 0.00 | 1 | 1.000 | 1 | 0 | 0 | 1/0 |

BIO



2

Hannah
MURPHY

Jr. • F/M • 5-4 • Lakewood, Colo. • Lakewood HS

CAREER STATISTICS

| SEASON | TEAM | GP-GS | Min. | G | A | Pts | Shot | Shot% | SOG | SOG% | GW | PK-Att |
|---------|------|---------|---------|---|---|-----|------|-------|-----|------|----|--------|
| 2023-24 | MTSU | 17 - 1 | 475:55 | 0 | 1 | 1 | 6 | .000 | 2 | .333 | 0 | 0 - 0 |
| 2024-25 | MTSU | 19 - 17 | 1294:39 | 1 | 2 | 4 | 10 | .100 | 3 | .300 | 1 | 0 - 0 |
| 2025-26 | MTSU | 6 - 6 | 439:41 | 1 | 1 | 3 | 14 | .071 | 8 | .571 | 0 | 0 - 0 |
| TOTAL | | 42 - 24 | 2210:15 | 2 | 4 | 8 | 30 | .067 | 13 | .433 | 1 | 0 - 0 |

SINGLE-MATCH CAREER HIGHS

| Statistic | Value |
|-----------|--|
| Points | 2 vs Louisiana Tech 11/01/24, vs West Ga. 08/31/25 |
| Goals | 1 vs Louisiana Tech 11/01/24, vs West Ga. 08/31/25 |
| Assists | 1 4 times |
| Shots | 5 vs Jackson St. 08/17/25 |

2025 MATCH-BY-MATCH

| Date | Opponent | SCORE | GP | GS | G | A | PTS | SH | SH% | SOG | SOG% | GW | PK-ATT | YC | RC | MIN |
|------------|------------------|-------|----|----|---|---|-----|----|------|-----|------|----|--------|----|----|-----|
| 08/14/2025 | at Belmont | 2-1 | * | * | 0 | 0 | 0 | 3 | .000 | 2 | .667 | 0 | 0-0 | 0 | 0 | 77 |
| 08/17/2025 | Jackson St. | 3-0 | * | * | 0 | 0 | 0 | 5 | .000 | 2 | .500 | 0 | 0-0 | 0 | 0 | 52 |
| 08/21/2025 | Alabama A&M | 2-0 | * | * | 0 | 1 | 1 | 1 | .000 | 0 | .444 | 0 | 0-0 | 0 | 0 | 66 |
| 08/24/2025 | Indiana St. | 2-2 | * | * | 0 | 0 | 0 | 3 | .000 | 2 | .500 | 0 | 0-0 | 0 | 0 | 84 |
| 08/28/2025 | at South Alabama | 0-4 | * | * | 0 | 0 | 0 | 1 | .000 | 1 | .538 | 0 | 0-0 | 0 | 0 | 90 |
| 08/31/2025 | West Ga. | 3-0 | * | * | 1 | 0 | 2 | 1 | .071 | 1 | .571 | 0 | 0-0 | 0 | 0 | 73 |
| Totals | | 12-7 | 6 | 6 | 1 | 1 | 3 | 14 | .071 | 8 | .571 | 0 | 0-0 | 0 | 0 | 440 |

BIO





3

Megan
CARROLL

Sr. • M • 5-3 • Maryville, Tenn. • Maryville HS

CAREER STATISTICS

| SEASON | TEAM | GP-GS | Min. | G | A | Pts | Shot | Shot% | SOG | SOG% | GW | PK-Att |
|---------|------|---------|---------|---|---|-----|------|-------|-----|-------|----|--------|
| 2022-23 | MTSU | 17 - 11 | 1013:20 | 1 | 0 | 2 | 14 | .071 | 6 | .429 | 0 | 0 - 0 |
| 2024-25 | MTSU | 19 - 13 | 1260:05 | 1 | 0 | 2 | 11 | .091 | 6 | .545 | 1 | 0 - 0 |
| 2025-26 | MTSU | 6 - 5 | 405:23 | 0 | 1 | 1 | 2 | .000 | 2 | 1.000 | 0 | 0 - 0 |
| TOTAL | | 42 - 29 | 2678:48 | 2 | 1 | 5 | 27 | .074 | 14 | .519 | 1 | 0 - 0 |

SINGLE-MATCH CAREER HIGHS

| Statistic | Value |
|-----------|--|
| Points | 2 vs Louisiana Tech 10/09/22, vs Bellarmine 09/01/24 |
| Goals | 1 vs Louisiana Tech 10/09/22, vs Bellarmine 09/01/24 |
| Assists | 1 at Belmont 08/14/25 |
| Shots | 3 vs Mississippi Val. 09/02/22 |

2025 MATCH-BY-MATCH

| Date | Opponent | SCORE | GP | GS | G | A | PTS | SH | SH% | SOG | SOG% | GW | PK-ATT | YC | RC | MIN |
|------------|------------------|-------|----|----|---|---|-----|----|------|-----|-------|----|--------|----|----|-----|
| 08/14/2025 | at Belmont | 2-1 | * | * | 0 | 1 | 1 | 0 | .000 | 0 | .000 | 0 | 0-0 | 0 | 0 | 87 |
| 08/17/2025 | Jackson St. | 3-0 | * | * | 0 | 0 | 0 | 1 | .000 | 1 | 1.000 | 0 | 0-0 | 0 | 0 | 67 |
| 08/21/2025 | Alabama A&M | 2-0 | * | * | 0 | 0 | 0 | 1 | .000 | 1 | 1.000 | 0 | 0-0 | 0 | 0 | 61 |
| 08/24/2025 | Indiana St. | 2-2 | * | * | 0 | 0 | 0 | 0 | .000 | 0 | 1.000 | 0 | 0-0 | 0 | 0 | 71 |
| 08/28/2025 | at South Alabama | 0-4 | * | * | 0 | 0 | 0 | 0 | .000 | 0 | 1.000 | 0 | 0-0 | 0 | 0 | 87 |
| 08/31/2025 | West Ga. | 3-0 | * | * | 0 | 0 | 0 | 0 | .000 | 0 | 1.000 | 0 | 0-0 | 0 | 0 | 35 |
| Totals | | 12-7 | 6 | 5 | 0 | 1 | 1 | 2 | .000 | 2 | 1.000 | 0 | 0-0 | 0 | 0 | 406 |

BIO



4

Yana
YORDANOVA

Sr. • M • 5-3 • Kyustendil, Bulgaria • 55 SOU Petko Karavelov

CAREER STATISTICS

| SEASON | TEAM | GP-GS | Min. | G | A | Pts | Shot | Shot% | SOG | SOG% | GW | PK-Att |
|---------|------|---------|---------|---|---|-----|------|-------|-----|------|----|--------|
| 2022-23 | MTSU | 17 - 12 | 826:14 | 0 | 0 | 0 | 12 | .000 | 6 | .500 | 0 | 0 - 0 |
| 2023-24 | MTSU | 15 - 8 | 741:15 | 1 | 1 | 3 | 23 | .043 | 13 | .565 | 0 | 0 - 0 |
| 2024-25 | MTSU | 16 - 6 | 565:15 | 2 | 0 | 4 | 7 | .286 | 3 | .429 | 0 | 0 - 0 |
| 2025-26 | MTSU | 6 - 0 | 173:18 | 0 | 0 | 0 | 5 | .000 | 1 | .200 | 0 | 0 - 0 |
| TOTAL | | 54 - 26 | 2306:02 | 3 | 1 | 7 | 47 | .064 | 23 | .489 | 0 | 0 - 0 |

SINGLE-MATCH CAREER HIGHS

| Statistic | Value |
|-----------|---------------------------|
| Points | 4 at Alabama A&M 09/05/24 |
| Goals | 2 at Alabama A&M 09/05/24 |
| Assists | 1 vs Chicago St. 09/29/23 |
| Shots | 7 vs Chicago St. 09/29/23 |

2025 MATCH-BY-MATCH

| Date | Opponent | SCORE | GP | GS | G | A | PTS | SH | SH% | SOG | SOG% | GW | PK-ATT | YC | RC | MIN |
|------------|------------------|-------|----|----|---|---|-----|----|------|-----|-------|----|--------|----|----|-----|
| 08/14/2025 | at Belmont | 2-1 | * | * | 0 | 0 | 0 | 0 | .000 | 0 | .000 | 0 | 0-0 | 0 | 0 | 11 |
| 08/17/2025 | Jackson St. | 3-0 | * | * | 0 | 0 | 0 | 1 | .000 | 1 | 1.000 | 0 | 0-0 | 0 | 0 | 39 |
| 08/21/2025 | Alabama A&M | 2-0 | * | * | 0 | 0 | 0 | 1 | .000 | 0 | .500 | 0 | 0-0 | 0 | 0 | 42 |
| 08/24/2025 | Indiana St. | 2-2 | * | * | 0 | 0 | 0 | 2 | .000 | 0 | .250 | 0 | 0-0 | 0 | 0 | 31 |
| 08/28/2025 | at South Alabama | 0-4 | * | * | 0 | 0 | 0 | 0 | .000 | 0 | .250 | 0 | 0-0 | 0 | 0 | 16 |
| 08/31/2025 | West Ga. | 3-0 | * | * | 0 | 0 | 0 | 1 | .000 | 0 | .200 | 0 | 0-0 | 0 | 0 | 36 |
| Totals | | 12-7 | 6 | 0 | 0 | 0 | 0 | 5 | .000 | 1 | .200 | 0 | 0-0 | 0 | 0 | 174 |

BIO





5

Hannah DELANEY

Sr. • D • 5-6 • Murfreesboro, Tenn. • Chattanooga

CAREER STATISTICS

| SEASON | TEAM | GP-GS | Min. | G | A | Pts | Shot | Shot% | SOG | SOG% | GW | PK-Att |
|----------------|------|---------|---------|---|---|-----|------|-------|-----|------|----|--------|
| 2022-23 | UTC | 7 - 1 | 233:06 | 0 | 0 | 0 | 0 | .000 | 0 | .000 | 0 | 0 - 0 |
| 2023-24 | UTC | 17 - 7 | 834:44 | 0 | 1 | 1 | 6 | .000 | 2 | .333 | 0 | 0 - 0 |
| 2024-25 | UTC | 18 - 15 | 1197:48 | 0 | 0 | 0 | 4 | .000 | 1 | .250 | 0 | 0 - 0 |
| 2025-26 | MTSU | 6 - 3 | 292:10 | 0 | 2 | 2 | 0 | .000 | 0 | .000 | 0 | 0 - 0 |
| TOTAL FOR MTSU | | 6 - 3 | 292:10 | 0 | 2 | 2 | 0 | .000 | 0 | .000 | 0 | 0 - 0 |
| TOTAL | | 48 - 26 | 2557:48 | 0 | 3 | 3 | 10 | .000 | 3 | .300 | 0 | 0 - 0 |

SINGLE-MATCH CAREER HIGHS

| Statistic | Value |
|-----------|---|
| Points | 1 vs Mercer 09/21/23, vs Alabama A&M 08/21/25, vs West Ga. 08/31/25 |
| Assists | 1 vs Mercer 09/21/23, vs Alabama A&M 08/21/25, vs West Ga. 08/31/25 |
| Shots | 2 vs Furman 10/01/23, vs Tennessee Tech 09/05/24 |

2025 MATCH-BY-MATCH

| Date | Opponent | SCORE | GP | GS | G | A | PTS | SH | SH% | SOG | SOG% | GW | PK-ATT | YC | RC | MIN |
|------------|------------------|-------|----|----|---|---|-----|----|------|-----|------|----|--------|----|----|-----|
| 08/14/2025 | at Belmont | 2-1 | * | * | 0 | 0 | 0 | 0 | .000 | 0 | .000 | 0 | 0-0 | 0 | 0 | 29 |
| 08/17/2025 | Jackson St. | 3-0 | * | * | 0 | 0 | 0 | 0 | .000 | 0 | .000 | 0 | 0-0 | 0 | 0 | 48 |
| 08/21/2025 | Alabama A&M | 2-0 | * | * | 0 | 1 | 1 | 0 | .000 | 0 | .000 | 0 | 0-0 | 0 | 0 | 30 |
| 08/24/2025 | Indiana St. | 2-2 | * | * | 0 | 0 | 0 | 0 | .000 | 0 | .000 | 0 | 0-0 | 0 | 0 | 76 |
| 08/28/2025 | at South Alabama | 0-4 | * | * | 0 | 0 | 0 | 0 | .000 | 0 | .000 | 0 | 0-0 | 0 | 0 | 43 |
| 08/31/2025 | West Ga. | 3-0 | * | * | 0 | 1 | 1 | 0 | .000 | 0 | .000 | 0 | 0-0 | 0 | 0 | 70 |
| Totals | | 12-7 | 6 | 3 | 0 | 2 | 2 | 0 | .000 | 0 | .000 | 0 | 0-0 | 0 | 0 | 293 |

BIO



6

Sadie STERBENZ



Jr. • D • 5-6 • Clarendon Hills, Ill. • Benet Academy

CAREER STATISTICS

| SEASON | TEAM | GP-GS | Min. | G | A | Pts | Shot | Shot% | SOG | SOG% | GW | PK-Att |
|---------|------|---------|---------|---|---|-----|------|-------|-----|------|----|--------|
| 2023-24 | MTSU | 14 - 11 | 800:53 | 1 | 0 | 2 | 4 | .250 | 2 | .500 | 0 | 0 - 0 |
| 2024-25 | MTSU | 19 - 19 | 1570:47 | 1 | 5 | 7 | 10 | .100 | 4 | .400 | 0 | 0 - 0 |
| 2025-26 | MTSU | 6 - 6 | 447:55 | 0 | 1 | 1 | 3 | .000 | 1 | .333 | 0 | 0 - 0 |
| TOTAL | | 39 - 36 | 2819:36 | 2 | 6 | 10 | 17 | .118 | 7 | .412 | 0 | 0 - 0 |

SINGLE-MATCH CAREER HIGHS

| Statistic | Value |
|-----------|---|
| Points | 2 at Tennessee Tech 09/17/23, vs Bellarmine 09/01/24, vs South Alabama 09/12/24 |
| Goals | 1 at Tennessee Tech 09/17/23, vs South Alabama 09/12/24 |
| Assists | 2 vs Bellarmine 09/01/24 |
| Shots | 4 vs South Alabama 09/12/24 |

2025 MATCH-BY-MATCH

| Date | Opponent | SCORE | GP | GS | G | A | PTS | SH | SH% | SOG | SOG% | GW | PK-ATT | YC | RC | MIN |
|------------|------------------|-------|----|----|---|---|-----|----|------|-----|-------|----|--------|----|----|-----|
| 08/14/2025 | at Belmont | 2-1 | * | * | 0 | 0 | 0 | 1 | .000 | 1 | 1.000 | 0 | 0-0 | 0 | 0 | 90 |
| 08/17/2025 | Jackson St. | 3-0 | * | * | 0 | 1 | 1 | 0 | .000 | 0 | 1.000 | 0 | 0-0 | 1 | 0 | 37 |
| 08/21/2025 | Alabama A&M | 2-0 | * | * | 0 | 0 | 0 | 1 | .000 | 0 | .500 | 0 | 0-0 | 0 | 0 | 75 |
| 08/24/2025 | Indiana St. | 2-2 | * | * | 0 | 0 | 0 | 1 | .000 | 0 | .333 | 0 | 0-0 | 1 | 0 | 90 |
| 08/28/2025 | at South Alabama | 0-4 | * | * | 0 | 0 | 0 | 0 | .000 | 0 | .333 | 0 | 0-0 | 0 | 0 | 90 |
| 08/31/2025 | West Ga. | 3-0 | * | * | 0 | 0 | 0 | 0 | .000 | 0 | .333 | 0 | 0-0 | 0 | 0 | 67 |
| Totals | | 12-7 | 6 | 6 | 0 | 1 | 1 | 3 | .000 | 1 | .333 | 0 | 0-0 | 2 | 0 | 448 |

BIO





7

**Taijah
FRASER**

Sr. • F • 5-4 • Brampton, Ontario, Canada • St. Edmund Campion

CAREER STATISTICS

| SEASON | TEAM | GP-GS | Min. | G | A | Pts | Shot | Shot% | SOG | SOG% | GW | PK-Att |
|--------------|------|---------------|----------------|----------|----------|-----------|-----------|-------------|-----------|-------------|----------|--------------|
| 2022-23 | MTSU | 14 - 0 | 364:54 | 1 | 1 | 3 | 5 | .200 | 3 | .600 | 1 | 0 - 0 |
| 2023-24 | MTSU | 18 - 0 | 411:46 | 0 | 2 | 2 | 5 | .000 | 2 | .400 | 0 | 0 - 0 |
| 2024-25 | MTSU | 19 - 0 | 581:35 | 2 | 0 | 4 | 15 | .133 | 9 | .600 | 1 | 0 - 0 |
| 2025-26 | MTSU | 6 - 3 | 334:01 | 3 | 1 | 7 | 14 | .214 | 8 | .571 | 3 | 0 - 0 |
| TOTAL | | 57 - 3 | 1692:16 | 6 | 4 | 16 | 39 | .154 | 22 | .564 | 5 | 0 - 0 |

SINGLE-MATCH CAREER HIGHS

| Statistic | Value |
|-----------|------------------------|
| Points | 2 6 times |
| Goals | 1 6 times |
| Assists | 1 4 times |
| Shots | 4 vs West Ga. 08/31/25 |

2025 MATCH-BY-MATCH

| Date | Opponent | SCORE | GP | GS | G | A | PTS | SH | SH% | SOG | SOG% | GW | PK-ATT | YC | RC | MIN |
|---------------|------------------|-------------|----------|----------|----------|----------|----------|-----------|-------------|----------|-------------|----------|------------|----------|----------|------------|
| 08/14/2025 | at Belmont | 2-1 | * | * | 1 | 0 | 2 | 2 | .500 | 2 | 1.000 | 1 | 0-0 | 0 | 0 | 30 |
| 08/17/2025 | Jackson St. | 3-0 | * | * | 0 | 0 | 0 | 1 | .333 | 1 | 1.000 | 0 | 0-0 | 0 | 0 | 37 |
| 08/21/2025 | Alabama A&M | 2-0 | * | * | 1 | 0 | 2 | 3 | .333 | 2 | .833 | 1 | 0-0 | 0 | 0 | 39 |
| 08/24/2025 | Indiana St. | 2-2 | * | * | 0 | 1 | 1 | 1 | .286 | 1 | .857 | 0 | 0-0 | 0 | 0 | 76 |
| 08/28/2025 | at South Alabama | 0-4 | * | * | 0 | 0 | 0 | 3 | .200 | 0 | .600 | 0 | 0-0 | 0 | 0 | 81 |
| 08/31/2025 | West Ga. | 3-0 | * | * | 1 | 0 | 2 | 4 | .214 | 2 | .571 | 1 | 0-0 | 0 | 0 | 73 |
| Totals | | 12-7 | 6 | 3 | 3 | 1 | 7 | 14 | .214 | 8 | .571 | 3 | 0-0 | 0 | 0 | 335 |

BIO



8

**Charli
DUNN**



Fr. • D/M • 5-5 • Auckland, New Zealand • Western Springs College

CAREER STATISTICS

| SEASON | TEAM | GP-GS | Min. | G | A | Pts | Shot | Shot% | SOG | SOG% | GW | PK-Att |
|--------------|------|--------------|--------------|----------|----------|----------|----------|-------------|----------|-------------|----------|--------------|
| 2025-26 | MTSU | 4 - 0 | 87:14 | 0 | 0 | 0 | 0 | .000 | 0 | .000 | 0 | 0 - 0 |
| TOTAL | | 4 - 0 | 87:14 | 0 | 0 | 0 | 0 | .000 | 0 | .000 | 0 | 0 - 0 |

SINGLE-MATCH CAREER HIGHS

2025 MATCH-BY-MATCH

| Date | Opponent | SCORE | GP | GS | G | A | PTS | SH | SH% | SOG | SOG% | GW | PK-ATT | YC | RC | MIN |
|---------------|------------------|------------|----------|----------|----------|----------|----------|----------|-------------|----------|-------------|----------|------------|----------|----------|-----------|
| 08/17/2025 | Jackson St. | 3-0 | * | * | 0 | 0 | 0 | 0 | .000 | 0 | .000 | 0 | 0-0 | 0 | 0 | 45 |
| 08/21/2025 | Alabama A&M | 2-0 | * | * | 0 | 0 | 0 | 0 | .000 | 0 | .000 | 0 | 0-0 | 0 | 0 | 14 |
| 08/28/2025 | at South Alabama | 0-4 | * | * | 0 | 0 | 0 | 0 | .000 | 0 | .000 | 0 | 0-0 | 0 | 0 | 11 |
| 08/31/2025 | West Ga. | 3-0 | * | * | 0 | 0 | 0 | 0 | .000 | 0 | .000 | 0 | 0-0 | 0 | 0 | 19 |
| Totals | | 8-4 | 4 | 0 | 0 | 0 | 0 | 0 | .000 | 0 | .000 | 0 | 0-0 | 0 | 0 | 88 |

BIO





9

Alli
CRAIG

Fr. • F • 5-3 • Woodstock, Ga. • River Ridge HS

CAREER STATISTICS

| SEASON | TEAM | GP-GS | Min. | G | A | Pts | Shot | Shot% | SOG | SOG% | GW | PK-Att |
|---------|------|-------|--------|---|---|-----|------|-------|-----|------|----|--------|
| 2025-26 | MTSU | 3 - 3 | 121:04 | 2 | 0 | 4 | 3 | .667 | 2 | .667 | 0 | 0 - 0 |
| TOTAL | | 3 - 3 | 121:04 | 2 | 0 | 4 | 3 | .667 | 2 | .667 | 0 | 0 - 0 |

SINGLE-MATCH CAREER HIGHS

| Statistic | Value |
|-----------|---------------------------|
| Points | 4 vs Jackson St. 08/17/25 |
| Goals | 2 vs Jackson St. 08/17/25 |
| Shots | 3 vs Jackson St. 08/17/25 |

2025 MATCH-BY-MATCH

| Date | Opponent | SCORE | GP | GS | G | A | PTS | SH | SH% | SOG | SOG% | GW | PK-ATT | YC | RC | MIN |
|------------|-------------|-------|----|----|---|---|-----|----|------|-----|------|----|--------|----|----|-----|
| 08/14/2025 | at Belmont | 2-1 | * | * | 0 | 0 | 0 | 0 | .000 | 0 | .000 | 0 | 0-0 | 0 | 0 | 51 |
| 08/17/2025 | Jackson St. | 3-0 | * | * | 2 | 0 | 4 | 3 | .667 | 2 | .667 | 0 | 0-0 | 0 | 0 | 42 |
| 08/21/2025 | Alabama A&M | 2-0 | * | * | 0 | 0 | 0 | 0 | .667 | 0 | .667 | 0 | 0-0 | 0 | 0 | 30 |
| Totals | | 7-1 | 3 | 3 | 2 | 0 | 4 | 3 | .667 | 2 | .667 | 0 | 0-0 | 0 | 0 | 122 |

BIO



10

Lilah
CORNELL

Fr. • F • 5-4 • Chagrin Falls, Ohio • Kenston HS

CAREER STATISTICS

| SEASON | TEAM | GP-GS | Min. | G | A | Pts | Shot | Shot% | SOG | SOG% | GW | PK-Att |
|---------|------|-------|--------|---|---|-----|------|-------|-----|------|----|--------|
| 2025-26 | MTSU | 6 - 0 | 116:28 | 0 | 0 | 0 | 1 | .000 | 0 | .000 | 0 | 0 - 0 |
| TOTAL | | 6 - 0 | 116:28 | 0 | 0 | 0 | 1 | .000 | 0 | .000 | 0 | 0 - 0 |

SINGLE-MATCH CAREER HIGHS

| Statistic | Value |
|-----------|---------------------------|
| Shots | 1 vs Jackson St. 08/17/25 |

2025 MATCH-BY-MATCH

| Date | Opponent | SCORE | GP | GS | G | A | PTS | SH | SH% | SOG | SOG% | GW | PK-ATT | YC | RC | MIN |
|------------|------------------|-------|----|----|---|---|-----|----|------|-----|------|----|--------|----|----|-----|
| 08/14/2025 | at Belmont | 2-1 | * | * | 0 | 0 | 0 | 0 | .000 | 0 | .000 | 0 | 0-0 | 0 | 0 | 15 |
| 08/17/2025 | Jackson St. | 3-0 | * | * | 0 | 0 | 0 | 1 | .000 | 0 | .000 | 0 | 0-0 | 0 | 0 | 16 |
| 08/21/2025 | Alabama A&M | 2-0 | * | * | 0 | 0 | 0 | 0 | .000 | 0 | .000 | 0 | 0-0 | 0 | 0 | 25 |
| 08/24/2025 | Indiana St. | 2-2 | * | * | 0 | 0 | 0 | 0 | .000 | 0 | .000 | 0 | 0-0 | 0 | 0 | 14 |
| 08/28/2025 | at South Alabama | 0-4 | * | * | 0 | 0 | 0 | 0 | .000 | 0 | .000 | 0 | 0-0 | 0 | 0 | 31 |
| 08/31/2025 | West Ga. | 3-0 | * | * | 0 | 0 | 0 | 0 | .000 | 0 | .000 | 0 | 0-0 | 0 | 0 | 18 |
| Totals | | 12-7 | 6 | 0 | 0 | 0 | 0 | 1 | .000 | 0 | .000 | 0 | 0-0 | 0 | 0 | 117 |

BIO





11

Annamaria BENKE

Fr. • M/F • 5-5 • Levendula, Hungary • Alternative Secondary School of Economics

CAREER STATISTICS

| SEASON | TEAM | GP-GS | Min. | G | A | Pts | Shot | Shot% | SOG | SOG% | GW | PK-Att |
|--------------|------|--------------|---------------|----------|----------|----------|----------|-------------|----------|-------------|----------|--------------|
| 2025-26 | MTSU | 6 - 0 | 163:10 | 0 | 0 | 0 | 2 | .000 | 1 | .500 | 0 | 0 - 0 |
| TOTAL | | 6 - 0 | 163:10 | 0 | 0 | 0 | 2 | .000 | 1 | .500 | 0 | 0 - 0 |

SINGLE-MATCH CAREER HIGHS

| Statistic | Value |
|-----------|--|
| Shots | 1 vs Alabama A&M 08/21/25, at South Alabama 08/28/25 |

2025 MATCH-BY-MATCH

| Date | Opponent | SCORE | GP | GS | G | A | PTS | SH | SH% | SOG | SOG% | GW | PK-ATT | YC | RC | MIN |
|---------------|------------------|-------------|----------|----------|----------|----------|----------|----------|-------------|----------|-------------|----------|------------|----------|----------|------------|
| 08/14/2025 | at Belmont | 2-1 | * | * | 0 | 0 | 0 | 0 | .000 | 0 | .000 | 0 | 0-0 | 0 | 0 | 29 |
| 08/17/2025 | Jackson St. | 3-0 | * | * | 0 | 0 | 0 | 0 | .000 | 0 | .000 | 0 | 0-0 | 0 | 0 | 41 |
| 08/21/2025 | Alabama A&M | 2-0 | * | * | 0 | 0 | 0 | 1 | .000 | 1 | 1.000 | 0 | 0-0 | 0 | 0 | 25 |
| 08/24/2025 | Indiana St. | 2-2 | * | * | 0 | 0 | 0 | 0 | .000 | 0 | 1.000 | 0 | 0-0 | 0 | 0 | 26 |
| 08/28/2025 | at South Alabama | 0-4 | * | * | 0 | 0 | 0 | 1 | .000 | 0 | .500 | 0 | 0-0 | 0 | 0 | 19 |
| 08/31/2025 | West Ga. | 3-0 | * | * | 0 | 0 | 0 | 0 | .000 | 0 | .500 | 0 | 0-0 | 0 | 0 | 27 |
| Totals | | 12-7 | 6 | 0 | 0 | 0 | 0 | 2 | .000 | 1 | .500 | 0 | 0-0 | 0 | 0 | 164 |

BIO



12

Mya STENEHJEM



Fr. • M • 5-6 • Phoenix, Ariz. • Pinnacle HS

CAREER STATISTICS

| SEASON | TEAM | GP-GS | Min. | G | A | Pts | Shot | Shot% | SOG | SOG% | GW | PK-Att |
|--------------|------|--------------|---------------|----------|----------|----------|----------|-------------|----------|--------------|----------|--------------|
| 2025-26 | MTSU | 6 - 6 | 475:45 | 1 | 0 | 2 | 3 | .333 | 3 | 1.000 | 0 | 0 - 0 |
| TOTAL | | 6 - 6 | 475:45 | 1 | 0 | 2 | 3 | .333 | 3 | 1.000 | 0 | 0 - 0 |

SINGLE-MATCH CAREER HIGHS

| Statistic | Value |
|-----------|--|
| Points | 2 vs Indiana St. 08/24/25 |
| Goals | 1 vs Indiana St. 08/24/25 |
| Shots | 1 vs Jackson St. 08/17/25, vs Indiana St. 08/24/25, vs West Ga. 08/31/25 |

2025 MATCH-BY-MATCH

| Date | Opponent | SCORE | GP | GS | G | A | PTS | SH | SH% | SOG | SOG% | GW | PK-ATT | YC | RC | MIN |
|---------------|------------------|-------------|----------|----------|----------|----------|----------|----------|-------------|----------|--------------|----------|------------|----------|----------|------------|
| 08/14/2025 | at Belmont | 2-1 | * | * | 0 | 0 | 0 | 0 | .000 | 0 | .000 | 0 | 0-0 | 0 | 0 | 84 |
| 08/17/2025 | Jackson St. | 3-0 | * | * | 0 | 0 | 0 | 1 | .000 | 1 | 1.000 | 0 | 0-0 | 0 | 0 | 63 |
| 08/21/2025 | Alabama A&M | 2-0 | * | * | 0 | 0 | 0 | 0 | .000 | 0 | 1.000 | 0 | 0-0 | 0 | 0 | 84 |
| 08/24/2025 | Indiana St. | 2-2 | * | * | 1 | 0 | 2 | 1 | .500 | 1 | 1.000 | 0 | 0-0 | 0 | 0 | 90 |
| 08/28/2025 | at South Alabama | 0-4 | * | * | 0 | 0 | 0 | 0 | .500 | 0 | 1.000 | 0 | 0-0 | 0 | 0 | 90 |
| 08/31/2025 | West Ga. | 3-0 | * | * | 0 | 0 | 0 | 1 | .333 | 1 | 1.000 | 0 | 0-0 | 0 | 0 | 67 |
| Totals | | 12-7 | 6 | 6 | 1 | 0 | 2 | 3 | .333 | 3 | 1.000 | 0 | 0-0 | 0 | 0 | 476 |

BIO





13

Olivia
BEST

Fr. • F • 5-5 • Apex, N.C. • Crossroads Flex HS

CAREER STATISTICS

| SEASON | TEAM | GP-GS | Min. | G | A | Pts | Shot | Shot% | SOG | SOG% | GW | PK-Att |
|---------|------|-------|-------|---|---|-----|------|-------|-----|-------|----|--------|
| 2025-26 | MTSU | 2 - 0 | 39:45 | 1 | 0 | 2 | 1 | 1.000 | 1 | 1.000 | 0 | 0 - 0 |
| TOTAL | | 2 - 0 | 39:45 | 1 | 0 | 2 | 1 | 1.000 | 1 | 1.000 | 0 | 0 - 0 |

SINGLE-MATCH CAREER HIGHS

| Statistic | Value |
|-----------|-----------------------|
| Points | 2 at Belmont 08/14/25 |
| Goals | 1 at Belmont 08/14/25 |
| Shots | 1 at Belmont 08/14/25 |

2025 MATCH-BY-MATCH

| Date | Opponent | SCORE | GP | GS | G | A | PTS | SH | SH% | SOG | SOG% | GW | PK-ATT | YC | RC | MIN |
|------------|-------------|-------|----|----|---|---|-----|----|-------|-----|-------|----|--------|----|----|-----|
| 08/14/2025 | at Belmont | 2-1 | * | | 1 | 0 | 2 | 1 | 1.000 | 1 | 1.000 | 0 | 0-0 | 0 | 0 | 25 |
| 08/17/2025 | Jackson St. | 3-0 | * | | 0 | 0 | 0 | 0 | 1.000 | 0 | 1.000 | 0 | 0-0 | 0 | 0 | 16 |
| Totals | | 5-1 | 2 | 0 | 1 | 0 | 2 | 1 | 1.000 | 1 | 1.000 | 0 | 0-0 | 0 | 0 | 40 |

BIO



14

Jess
GRAY



So. • D • 5-5 • Oxford, England • The Henley College

CAREER STATISTICS

| SEASON | TEAM | GP-GS | Min. | G | A | Pts | Shot | Shot% | SOG | SOG% | GW | PK-Att |
|---------|------|--------|--------|---|---|-----|------|-------|-----|------|----|--------|
| 2024-25 | MTSU | 9 - 0 | 196:14 | 0 | 0 | 0 | 0 | .000 | 0 | .000 | 0 | 0 - 0 |
| 2025-26 | MTSU | 3 - 0 | 55:03 | 0 | 0 | 0 | 0 | .000 | 0 | .000 | 0 | 0 - 0 |
| TOTAL | | 12 - 0 | 251:17 | 0 | 0 | 0 | 0 | .000 | 0 | .000 | 0 | 0 - 0 |

SINGLE-MATCH CAREER HIGHS

2025 MATCH-BY-MATCH

| Date | Opponent | SCORE | GP | GS | G | A | PTS | SH | SH% | SOG | SOG% | GW | PK-ATT | YC | RC | MIN |
|------------|-------------|-------|----|----|---|---|-----|----|------|-----|------|----|--------|----|----|-----|
| 08/17/2025 | Jackson St. | 3-0 | * | | 0 | 0 | 0 | 0 | .000 | 0 | .000 | 0 | 0-0 | 0 | 0 | 36 |
| 08/21/2025 | Alabama A&M | 2-0 | * | | 0 | 0 | 0 | 0 | .000 | 0 | .000 | 0 | 0-0 | 0 | 0 | 7 |
| 08/31/2025 | West Ga. | 3-0 | * | | 0 | 0 | 0 | 0 | .000 | 0 | .000 | 0 | 0-0 | 0 | 0 | 13 |
| Totals | | 8-0 | 3 | 0 | 0 | 0 | 0 | 0 | .000 | 0 | .000 | 0 | 0-0 | 0 | 0 | 56 |

BIO





16

Ximena
JAUREGUI

Gr. • F/M • 5-0 • Cancun, Mexico • Florida Tech

CAREER STATISTICS

| SEASON | TEAM | GP-GS | Min. | G | A | Pts | Shot | Shot% | SOG | SOG% | GW | PK-Att |
|---------|------|-------|--------|---|---|-----|------|-------|-----|------|----|--------|
| 2025-26 | MTSU | 6 - 6 | 375:11 | 1 | 1 | 3 | 10 | .100 | 4 | .400 | 0 | 0 - 0 |
| TOTAL | | 6 - 6 | 375:11 | 1 | 1 | 3 | 10 | .100 | 4 | .400 | 0 | 0 - 0 |

SINGLE-MATCH CAREER HIGHS

| Statistic | Value |
|-----------|------------------------|
| Points | 2 vs West Ga. 08/31/25 |
| Goals | 1 vs West Ga. 08/31/25 |
| Assists | 1 at Belmont 08/14/25 |
| Shots | 4 vs West Ga. 08/31/25 |

2025 MATCH-BY-MATCH

| Date | Opponent | SCORE | GP | GS | G | A | PTS | SH | SH% | SOG | SOG% | GW | PK-ATT | YC | RC | MIN |
|------------|------------------|-------|----|----|---|---|-----|----|------|-----|-------|----|--------|----|----|-----|
| 08/14/2025 | at Belmont | 2-1 | * | * | 0 | 1 | 1 | 1 | .000 | 1 | 1.000 | 0 | 0-0 | 0 | 0 | 58 |
| 08/17/2025 | Jackson St. | 3-0 | * | * | 0 | 0 | 0 | 2 | .000 | 1 | .667 | 0 | 0-0 | 0 | 0 | 53 |
| 08/21/2025 | Alabama A&M | 2-0 | * | * | 0 | 0 | 0 | 2 | .000 | 0 | .400 | 0 | 0-0 | 0 | 0 | 70 |
| 08/24/2025 | Indiana St. | 2-2 | * | * | 0 | 0 | 0 | 0 | .000 | 0 | .400 | 0 | 0-0 | 0 | 0 | 72 |
| 08/28/2025 | at South Alabama | 0-4 | * | * | 0 | 0 | 0 | 1 | .000 | 0 | .333 | 0 | 0-0 | 0 | 0 | 71 |
| 08/31/2025 | West Ga. | 3-0 | * | * | 1 | 0 | 2 | 4 | .100 | 2 | .400 | 0 | 0-0 | 0 | 0 | 55 |
| Totals | | 12-7 | 6 | 6 | 1 | 1 | 3 | 10 | .100 | 4 | .400 | 0 | 0-0 | 0 | 0 | 376 |

BIO



17

Addie
MARTIN

Fr. • D • 5-5 • St. Louis, Mo. • St. Joseph's Academy

CAREER STATISTICS



SINGLE-MATCH CAREER HIGHS

2025 MATCH-BY-MATCH

BIO





18

**Gabriela
SHEGOTA**

Sr. • F • 5-4 • Boca Raton, Fla. • Boca Raton Community HS

CAREER STATISTICS

| SEASON | TEAM | GP-GS | Min. | G | A | Pts | Shot | Shot% | SOG | SOG% | GW | PK-Att |
|--------------|------|--------------|--------------|----------|----------|----------|----------|-------------|----------|-------------|----------|--------------|
| 2022-23 | MTSU | 4 - 0 | 61:27 | 0 | 0 | 0 | 1 | .000 | 0 | .000 | 0 | 0 - 0 |
| 2023-24 | MTSU | 1 - 0 | 14:47 | 0 | 0 | 0 | 1 | .000 | 0 | .000 | 0 | 0 - 0 |
| TOTAL | | 5 - 0 | 76:14 | 0 | 0 | 0 | 2 | .000 | 0 | .000 | 0 | 0 - 0 |

SINGLE-MATCH CAREER HIGHS

| Statistic | Value |
|-----------|---|
| Shots | 1 vs Mississippi Val. 09/02/22, vs Chicago St. 09/29/23 |

2025 MATCH-BY-MATCH

BIO



19

**Sandra
SEGOVIA
DEL HOYO**



Gr. • M • 5-7 • Valencia, Spain • Aquinas College

CAREER STATISTICS

| SEASON | TEAM | GP-GS | Min. | G | A | Pts | Shot | Shot% | SOG | SOG% | GW | PK-Att |
|--------------|------|--------------|--------------|----------|----------|----------|----------|-------------|----------|-------------|----------|--------------|
| 2025-26 | MTSU | 5 - 0 | 63:37 | 0 | 0 | 0 | 2 | .000 | 0 | .000 | 0 | 0 - 0 |
| TOTAL | | 5 - 0 | 63:37 | 0 | 0 | 0 | 2 | .000 | 0 | .000 | 0 | 0 - 0 |

SINGLE-MATCH CAREER HIGHS

| Statistic | Value |
|-----------|---------------------------|
| Shots | 2 vs Alabama A&M 08/21/25 |

2025 MATCH-BY-MATCH

| Date | Opponent | SCORE | GP | GS | G | A | PTS | SH | SH% | SOG | SOG% | GW | PK-ATT | YC | RC | MIN |
|---------------|------------------|-------------|----|----------|----------|----------|----------|----------|-------------|----------|-------------|----------|------------|----------|----------|-----------|
| 08/17/2025 | Jackson St. | 3-0 | * | | 0 | 0 | 0 | 0 | .000 | 0 | .000 | 0 | 0-0 | 0 | 0 | 24 |
| 08/21/2025 | Alabama A&M | 2-0 | * | | 0 | 0 | 0 | 2 | .000 | 0 | .000 | 0 | 0-0 | 0 | 0 | 20 |
| 08/24/2025 | Indiana St. | 2-2 | * | | 0 | 0 | 0 | 0 | .000 | 0 | .000 | 0 | 0-0 | 0 | 0 | 3 |
| 08/28/2025 | at South Alabama | 0-4 | * | | 0 | 0 | 0 | 0 | .000 | 0 | .000 | 0 | 0-0 | 0 | 0 | 4 |
| 08/31/2025 | West Ga. | 3-0 | * | | 0 | 0 | 0 | 0 | .000 | 0 | .000 | 0 | 0-0 | 0 | 0 | 14 |
| Totals | | 10-6 | | 5 | 0 | 0 | 0 | 2 | .000 | 0 | .000 | 0 | 0-0 | 0 | 0 | 64 |

BIO





20

Idun
KVAALE

Sr. • F • 5-4 • Molde, Norway • Romsdal Videregående Skole

CAREER STATISTICS

| SEASON | TEAM | GP-GS | Min. | G | A | Pts | Shot | Shot% | SOG | SOG% | GW | PK-Att |
|---------|------|---------|---------|---|---|-----|------|-------|-----|------|----|--------|
| 2022-23 | MTSU | 17 - 14 | 972:08 | 0 | 1 | 1 | 7 | .000 | 1 | .143 | 0 | 0 - 0 |
| 2023-24 | MTSU | 18 - 18 | 1079:46 | 3 | 3 | 9 | 21 | .143 | 11 | .524 | 2 | 0 - 0 |
| 2024-25 | MTSU | 19 - 19 | 1422:20 | 5 | 3 | 13 | 26 | .192 | 18 | .692 | 2 | 0 - 0 |
| 2025-26 | MTSU | 4 - 4 | 251:30 | 0 | 2 | 2 | 2 | .000 | 1 | .500 | 0 | 0 - 0 |
| TOTAL | | 58 - 55 | 3725:45 | 8 | 9 | 25 | 56 | .143 | 31 | .554 | 4 | 0 - 0 |

SINGLE-MATCH CAREER HIGHS

| Statistic | Value |
|-----------|--|
| Points | 3 vs Chicago St. 09/29/23, at UTEP 09/26/24, vs Tennessee Tech 08/25/24 |
| Goals | 1 8 times |
| Assists | 1 9 times |
| Shots | 4 vs Belmont 08/20/23, vs Chicago St. 09/29/23, vs Jacksonville St. 10/03/24 |

2025 MATCH-BY-MATCH

| Date | Opponent | SCORE | GP | GS | G | A | PTS | SH | SH% | SOG | SOG% | GW | PK-ATT | YC | RC | MIN |
|------------|-------------|-------|----|----|---|---|-----|----|------|-----|------|----|--------|----|----|-----|
| 08/14/2025 | at Belmont | 2-1 | * | * | 0 | 0 | 0 | 1 | .000 | 0 | .000 | 0 | 0-0 | 1 | 0 | 64 |
| 08/17/2025 | Jackson St. | 3-0 | * | * | 0 | 1 | 1 | 1 | .000 | 1 | .500 | 0 | 0-0 | 0 | 0 | 60 |
| 08/21/2025 | Alabama A&M | 2-0 | * | * | 0 | 0 | 0 | 0 | .000 | 0 | .500 | 0 | 0-0 | 0 | 0 | 68 |
| 08/31/2025 | West Ga. | 3-0 | * | * | 0 | 1 | 1 | 0 | .000 | 0 | .500 | 0 | 0-0 | 0 | 0 | 63 |
| Totals | | 10-1 | 4 | 4 | 0 | 2 | 2 | 2 | .000 | 1 | .500 | 0 | 0-0 | 1 | 0 | 252 |

BIO



21

Aive
ANDRIUSKEVICIUTE

Fr. • D/M • 5-7 • Vilnius, Lithuania • Vilnius Ozas Gymnasium

CAREER STATISTICS

| SEASON | TEAM | GP-GS | Min. | G | A | Pts | Shot | Shot% | SOG | SOG% | GW | PK-Att |
|---------|------|-------|-------|---|---|-----|------|-------|-----|------|----|--------|
| 2025-26 | MTSU | 3 - 0 | 56:57 | 0 | 0 | 0 | 0 | .000 | 0 | .000 | 0 | 0 - 0 |
| TOTAL | | 3 - 0 | 56:57 | 0 | 0 | 0 | 0 | .000 | 0 | .000 | 0 | 0 - 0 |

SINGLE-MATCH CAREER HIGHS

2025 MATCH-BY-MATCH

| Date | Opponent | SCORE | GP | GS | G | A | PTS | SH | SH% | SOG | SOG% | GW | PK-ATT | YC | RC | MIN |
|------------|-------------|-------|----|----|---|---|-----|----|------|-----|------|----|--------|----|----|-----|
| 08/17/2025 | Jackson St. | 3-0 | * | | 0 | 0 | 0 | 0 | .000 | 0 | .000 | 0 | 0-0 | 0 | 0 | 18 |
| 08/21/2025 | Alabama A&M | 2-0 | * | | 0 | 0 | 0 | 0 | .000 | 0 | .000 | 0 | 0-0 | 0 | 0 | 16 |
| 08/31/2025 | West Ga. | 3-0 | * | | 0 | 0 | 0 | 0 | .000 | 0 | .000 | 0 | 0-0 | 0 | 0 | 24 |
| Totals | | 8-0 | 3 | 0 | 0 | 0 | 0 | 0 | .000 | 0 | .000 | 0 | 0-0 | 0 | 0 | 57 |

BIO





22

Emma
PETTERSEN

Sr. • F • 5-7 • Kristiansand, Norway • Kristiansand Katedralskole Gimle

CAREER STATISTICS

| SEASON | TEAM | GP-GS | Min. | G | A | Pts | Shot | Shot% | SOG | SOG% | GW | PK-Att |
|---------|------|---------|---------|----|---|-----|------|-------|-----|------|----|--------|
| 2022-23 | MTSU | 17 - 13 | 1154:12 | 4 | 0 | 8 | 36 | .111 | 16 | .444 | 0 | 0 - 0 |
| 2023-24 | MTSU | 17 - 13 | 891:39 | 1 | 1 | 3 | 22 | .045 | 10 | .455 | 0 | 0 - 0 |
| 2024-25 | MTSU | 6 - 6 | 365:44 | 3 | 3 | 9 | 12 | .250 | 7 | .583 | 0 | 0 - 0 |
| 2025-26 | MTSU | 6 - 6 | 440:03 | 2 | 3 | 7 | 11 | .182 | 8 | .727 | 1 | 0 - 0 |
| TOTAL | | 46 - 41 | 2851:39 | 10 | 7 | 27 | 81 | .123 | 41 | .506 | 1 | 0 - 0 |

SINGLE-MATCH CAREER HIGHS

| Statistic | Value |
|-----------|--|
| Points | 4 vs Bellarmine 09/01/24 |
| Goals | 1 10 times |
| Assists | 2 vs Bellarmine 09/01/24, vs West Ga. 08/31/25 |
| Shots | 6 vs Rice 10/26/22 |

2025 MATCH-BY-MATCH

| Date | Opponent | SCORE | GP | GS | G | A | PTS | SH | SH% | SOG | SOG% | GW | PK-ATT | YC | RC | MIN |
|------------|------------------|-------|----|----|---|---|-----|----|------|-----|------|----|--------|----|----|-----|
| 08/14/2025 | at Belmont | 2-1 | * | * | 0 | 0 | 0 | 1 | .000 | 0 | .000 | 0 | 0-0 | 0 | 0 | 76 |
| 08/17/2025 | Jackson St. | 3-0 | * | * | 1 | 0 | 2 | 2 | .333 | 2 | .667 | 1 | 0-0 | 0 | 0 | 57 |
| 08/21/2025 | Alabama A&M | 2-0 | * | * | 0 | 0 | 0 | 1 | .250 | 1 | .750 | 0 | 0-0 | 0 | 0 | 66 |
| 08/24/2025 | Indiana St. | 2-2 | * | * | 1 | 1 | 3 | 3 | .286 | 2 | .714 | 0 | 0-0 | 0 | 0 | 90 |
| 08/28/2025 | at South Alabama | 0-4 | * | * | 0 | 0 | 0 | 0 | .286 | 0 | .714 | 0 | 0-0 | 0 | 0 | 86 |
| 08/31/2025 | West Ga. | 3-0 | * | * | 0 | 2 | 2 | 4 | .182 | 3 | .727 | 0 | 0-0 | 0 | 0 | 67 |
| Totals | | 12-7 | 6 | 6 | 2 | 3 | 7 | 11 | .182 | 8 | .727 | 1 | 0-0 | 0 | 0 | 441 |

BIO



24

Lexi
RABOLD

Sr. • F • 5-9 • Laguna Beach, Calif. • Arcadia

CAREER STATISTICS

| SEASON | TEAM | GP-GS | Min. | G | A | Pts | Shot | Shot% | SOG | SOG% | GW | PK-Att |
|----------------|------|---------|---------|----|---|-----|------|-------|-----|-------|----|--------|
| 2022-23 | ARC | 1 - 0 | 12:00 | 0 | 0 | 0 | 0 | .000 | 0 | .000 | 0 | 0 - 0 |
| 2023-24 | ARC | 18 - 17 | 1212:09 | 6 | 2 | 14 | 53 | .113 | 20 | .377 | 0 | 0 - 0 |
| 2024-25 | ARC | 20 - 20 | 1516:55 | 8 | 3 | 19 | 52 | .154 | 29 | .558 | 3 | 0 - 0 |
| 2025-26 | MTSU | 4 - 0 | 40:07 | 0 | 0 | 0 | 1 | .000 | 1 | 1.000 | 0 | 0 - 0 |
| TOTAL FOR MTSU | | 4 - 0 | 40:07 | 0 | 0 | 0 | 1 | .000 | 1 | 1.000 | 0 | 0 - 0 |
| TOTAL | | 43 - 37 | 2781:12 | 14 | 5 | 33 | 106 | .132 | 50 | .472 | 3 | 0 - 0 |

SINGLE-MATCH CAREER HIGHS

| Statistic | Value |
|-----------|---|
| Points | 4 vs Cortland 09/01/24, vs Delaware Valley 10/26/24 |
| Goals | 2 vs Cortland 09/01/24 |
| Assists | 2 vs Delaware Valley 10/26/24 |
| Shots | 8 vs Goucher 09/07/24 |

2025 MATCH-BY-MATCH

| Date | Opponent | SCORE | GP | GS | G | A | PTS | SH | SH% | SOG | SOG% | GW | PK-ATT | YC | RC | MIN |
|------------|------------------|-------|----|----|---|---|-----|----|------|-----|-------|----|--------|----|----|-----|
| 08/17/2025 | Jackson St. | 3-0 | * | * | 0 | 0 | 0 | 0 | .000 | 0 | .000 | 0 | 0-0 | 0 | 0 | 23 |
| 08/21/2025 | Alabama A&M | 2-0 | * | * | 0 | 0 | 0 | 1 | .000 | 1 | 1.000 | 0 | 0-0 | 0 | 0 | 6 |
| 08/28/2025 | at South Alabama | 0-4 | * | * | 0 | 0 | 0 | 0 | .000 | 0 | 1.000 | 0 | 0-0 | 0 | 0 | 5 |
| 08/31/2025 | West Ga. | 3-0 | * | * | 0 | 0 | 0 | 0 | .000 | 0 | 1.000 | 0 | 0-0 | 0 | 0 | 9 |
| Totals | | 8-4 | 4 | 4 | 0 | 0 | 0 | 1 | .000 | 1 | 1.000 | 0 | 0-0 | 0 | 0 | 41 |

BIO





25

**Maaja
FISCHER**

Fr. • M • 5-8 • Ontario, Canada • Kristiansand Katedralskole Gimle

CAREER STATISTICS

SINGLE-MATCH CAREER HIGHS

2025 MATCH-BY-MATCH

BIO



26

**Emma
BROWN**



Gr. • D • 5-8 • Middlesbrough, England • Stokesley Secondary School

CAREER STATISTICS

| SEASON | TEAM | GP-GS | Min. | G | A | Pts | Shot | Shot% | SOG | SOG% | GW | PK-Att |
|-----------------------|------|----------------|----------------|----------|----------|----------|-----------|-------------|----------|-------------|----------|--------------|
| 2021-22 | Nova | 16 - 16 | 1269:49 | 1 | 1 | 3 | 7 | .143 | 3 | .429 | 0 | 0 - 0 |
| 2022-23 | Nova | 5 - 3 | 218:37 | 0 | 0 | 0 | 0 | .000 | 0 | .000 | 0 | 0 - 0 |
| 2023-24 | Nova | 18 - 18 | 1623:02 | 1 | 0 | 2 | 10 | .100 | 4 | .400 | 0 | 0 - 0 |
| 2025-26 | MTSU | 6 - 6 | 518:18 | 0 | 0 | 0 | 0 | .000 | 0 | .000 | 0 | 0 - 0 |
| TOTAL FOR MTSU | | 6 - 6 | 518:18 | 0 | 0 | 0 | 0 | .000 | 0 | .000 | 0 | 0 - 0 |
| TOTAL | | 45 - 43 | 3629:46 | 2 | 1 | 5 | 17 | .118 | 7 | .412 | 0 | 0 - 0 |

SINGLE-MATCH CAREER HIGHS

| Statistic | Value |
|-----------|---|
| Points | 2 at Rollins 10/18/23, vs Maryville (MO) 09/05/21 |
| Goals | 1 at Rollins 10/18/23, vs Maryville (MO) 09/05/21 |
| Assists | 1 at Tampa 10/09/21 |
| Shots | 3 vs Fla. Memorial 09/13/21 |

2025 MATCH-BY-MATCH

| Date | Opponent | SCORE | GP | GS | G | A | PTS | SH | SH% | SOG | SOG% | GW | PK-ATT | YC | RC | MIN |
|---------------|------------------|-------------|----------|----------|----------|----------|----------|----------|-------------|----------|-------------|----------|------------|----------|----------|------------|
| 08/14/2025 | at Belmont | 2-1 | * | * | 0 | 0 | 0 | 0 | .000 | 0 | .000 | 0 | 0-0 | 0 | 0 | 90 |
| 08/17/2025 | Jackson St. | 3-0 | * | * | 0 | 0 | 0 | 0 | .000 | 0 | .000 | 0 | 0-0 | 0 | 0 | 82 |
| 08/21/2025 | Alabama A&M | 2-0 | * | * | 0 | 0 | 0 | 0 | .000 | 0 | .000 | 0 | 0-0 | 0 | 0 | 77 |
| 08/24/2025 | Indiana St. | 2-2 | * | * | 0 | 0 | 0 | 0 | .000 | 0 | .000 | 0 | 0-0 | 0 | 0 | 90 |
| 08/28/2025 | at South Alabama | 0-4 | * | * | 0 | 0 | 0 | 0 | .000 | 0 | .000 | 0 | 0-0 | 0 | 0 | 90 |
| 08/31/2025 | West Ga. | 3-0 | * | * | 0 | 0 | 0 | 0 | .000 | 0 | .000 | 0 | 0-0 | 0 | 0 | 90 |
| Totals | | 12-7 | 6 | 6 | 0 | 0 | 0 | 0 | .000 | 0 | .000 | 0 | 0-0 | 0 | 0 | 519 |

BIO





33

Scottie
NEWTON

Fr. • D • 5-9 • Franklin, Tenn. • Lipscomb Academy

CAREER STATISTICS

| SEASON | TEAM | GP-GS | Min. | G | A | Pts | Shot | Shot% | SOG | SOG% | GW | PK-Att |
|---------|------|-------|--------|---|---|-----|------|-------|-----|-------|----|--------|
| 2025-26 | MTSU | 6 - 6 | 503:20 | 1 | 0 | 2 | 2 | .500 | 2 | 1.000 | 0 | 0 - 0 |
| TOTAL | | 6 - 6 | 503:20 | 1 | 0 | 2 | 2 | .500 | 2 | 1.000 | 0 | 0 - 0 |

SINGLE-MATCH CAREER HIGHS

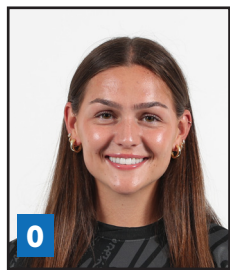
| Statistic | Value |
|-----------|--|
| Points | 2 vs Alabama A&M 08/21/25 |
| Goals | 1 vs Alabama A&M 08/21/25 |
| Shots | 1 vs Jackson St. 08/17/25, vs Alabama A&M 08/21/25 |

2025 MATCH-BY-MATCH

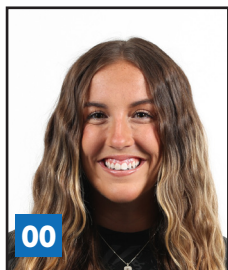
| Date | Opponent | SCORE | GP | GS | G | A | PTS | SH | SH% | SOG | SOG% | GW | PK-ATT | YC | RC | MIN |
|------------|------------------|-------|----|----|---|---|-----|----|------|-----|-------|----|--------|----|----|-----|
| 08/14/2025 | at Belmont | 2-1 | * | * | 0 | 0 | 0 | 0 | .000 | 0 | .000 | 0 | 0-0 | 0 | 0 | 90 |
| 08/17/2025 | Jackson St. | 3-0 | * | * | 0 | 0 | 0 | 1 | .000 | 1 | 1.000 | 0 | 0-0 | 0 | 0 | 54 |
| 08/21/2025 | Alabama A&M | 2-0 | * | * | 1 | 0 | 2 | 1 | .500 | 1 | 1.000 | 0 | 0-0 | 0 | 0 | 90 |
| 08/24/2025 | Indiana St. | 2-2 | * | * | 0 | 0 | 0 | 0 | .500 | 0 | 1.000 | 0 | 0-0 | 1 | 0 | 90 |
| 08/28/2025 | at South Alabama | 0-4 | * | * | 0 | 0 | 0 | 0 | .500 | 0 | 1.000 | 0 | 0-0 | 0 | 0 | 90 |
| 08/31/2025 | West Ga. | 3-0 | * | * | 0 | 0 | 0 | 0 | .500 | 0 | 1.000 | 0 | 0-0 | 0 | 0 | 90 |
| Totals | | 12-7 | 6 | 6 | 1 | 0 | 2 | 2 | .500 | 2 | 1.000 | 0 | 0-0 | 1 | 0 | 504 |

BIO

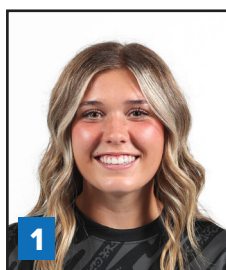




**DEMI
GRONAUER**



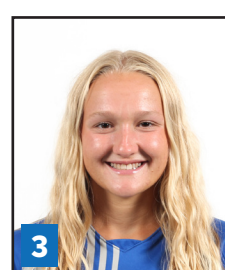
**EMILY
MCGRAIN**



**ELLA
SELLERS**



**HANNAH
MURPHY**



**MEGAN
CARROLL**



**YANA
YORDANOVA**



**HANNAH
DELANEY**



**SADIE
STERBENZ**



**TAIJAH
FRASER**



**CHARLI
DUNN**



**ALLI
CRAIG**



**LILAH
CORNELL**



**ANNAMARIA
BENKE**



**MYA
STENEHJERM**



**OLIVIA
BEST**



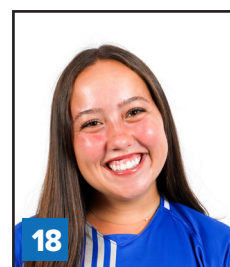
**JESS
GRAY**



**XIMENA
JAUREGUI**



**ADDIE
MARTIN**



**GABRIELA
SHEGOTA**



**SANDRA
SEGOVIA DE HOYOS**



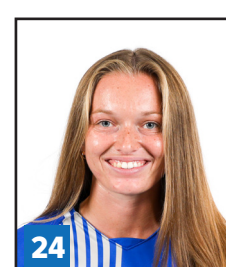
**IDUN
KVAALE**



**AIVE
ANDRIUSKEVICIUTE**



**EMMA
PETTERSEN**



**ALEXIS
RABOLD**



**MAAJA
FISCHER**



**EMMA
BROWN**



**SCOTTIE
NEWTON**



ASTON RHODEN
Head Coach
24th Season



HANNAH HOES
Associate Head Coach
4th Season



SEAN DONAHUE
Assistant Coach
2nd Season