



Officials: Melissa Barlow, Fatou Cissoko-Stephens, Teresa Stuck

**South Carolina - 82**

Record: 25-3 (13-1)

NO.	Name	Min	FG			Rebounds			Fouls		TP	AS	TO	ST	Blocks		+/-
			M-A	M-A	M-A	OR	DR	TOT	PF	FD					BS	BA	
20	Sania Feagin	F 12:55	0-0	0-0	2-2	1	2	3	3	1	2	0	3	0	0	0	2
21	Chloe Kitts	F 19:53	2-4	0-1	0-1	2	4	6	4	2	4	3	1	1	0	0	21
0	Te-Hina Paopao	G 26:56	4-10	2-4	3-4	0	3	3	1	2	13	4	2	3	1	0	19
23	Bree Hall	G 27:07	1-9	0-6	1-2	1	2	3	0	2	3	0	1	1	1	0	15
25	Raven Johnson	G 19:30	2-4	0-0	0-0	0	4	4	1	0	4	2	2	1	1	0	23
8	Joyce Edwards	28:33	6-12	0-0	5-7	10	2	12	3	7	17	3	1	3	2	0	26
12	MiLaysia Fulwiley	19:26	10-15	2-4	2-4	1	3	4	4	2	24	1	0	2	0	0	18
30	Maryam Dauda	11:51	1-2	0-0	1-2	3	4	7	0	2	3	0	0	1	0	0	4
5	Tessa Johnson	17:44	1-5	1-4	2-4	0	2	2	2	2	5	0	2	0	0	0	5
35	Sakima Walker	05:37	0-1	0-0	0-0	1	0	1	1	0	0	1	0	0	0	0	3
1	Maddy McDaniel	07:59	2-2	0-0	1-1	0	0	0	0	1	5	2	1	1	0	0	3
15	Adhel Tac	02:29	1-1	0-0	0-0	0	0	0	4	1	2	0	0	0	0	0	1
Team						1	1	2			0						
<b>Totals</b>			30-65	5-19	17-27	20	27	47	23	22	82	16	13	13	5	0	28

Shooting By Period		
1 <sup>st</sup> FG%	8-17	47.1%
3PT%	2-5	40.0%
FT%	6-6	100%
2 <sup>nd</sup> FG%	5-21	23.8%
3PT%	0-6	0.0%
FT%	1-6	16.7%
3 <sup>rd</sup> FG%	6-11	54.5%
3PT%	1-2	50.0%
FT%	8-11	72.7%
4 <sup>th</sup> FG%	11-16	68.8%
3PT%	2-6	33.3%
FT%	2-4	50%
GM FG%	30-65	46.2%
3PT%	5-19	26.3%
FT%	17-27	63.0%

Technical Fouls::NONE

Dead Ball Rebounds: 4, 0

**Vanderbilt - 54**

Record: 19-9 (6-8)

NO.	Name	Min	FG			Rebounds			Fouls		TP	AS	TO	ST	Blocks		+/-
			M-A	M-A	M-A	OR	DR	TOT	PF	FD					BS	BA	
10	Jane Nwaba	F 05:27	0-0	0-0	0-0	0	1	1	1	0	0	0	0	0	0	0	-1
12	Khamil Pierre	F 31:13	6-17	0-0	2-4	3	7	10	3	4	14	0	2	1	0	2	-21
5	Leilani Kapinus	G 32:40	2-6	0-1	1-2	4	3	7	3	4	5	2	0	0	0	0	-29
11	Jordyn Oliver	G 32:00	2-3	0-0	0-0	1	0	1	3	0	4	1	2	3	0	0	-16
23	Iyana Moore	G 21:20	0-4	0-2	1-2	1	1	2	3	1	1	2	4	1	0	0	-24
1	Mikayla Blakes	31:19	5-15	2-5	7-8	3	4	7	4	7	19	2	3	1	0	1	-15
4	Madison Greene	27:05	0-5	0-3	2-4	0	0	0	2	2	2	2	3	2	0	2	-14
14	Aiyana Mitchell	14:16	2-5	0-0	5-5	1	2	3	2	4	9	1	3	0	0	0	-13
13	Justine Pissott	03:26	0-1	0-1	0-0	0	0	0	0	1	0	0	0	0	0	0	-6
2	Jada Brown	01:14	0-0	0-0	0-0	0	0	0	1	0	0	0	0	0	0	0	-1
Team						1	3	4			0						
<b>Totals</b>			17-56	2-12	18-25	14	21	35	22	23	54	10	17	8	0	5	-28

Shooting By Period		
1 <sup>st</sup> FG%	5-16	31.3%
3PT%	1-3	33.3%
FT%	0-0	0%
2 <sup>nd</sup> FG%	5-13	38.5%
3PT%	1-3	33.3%
FT%	3-8	37.5%
3 <sup>rd</sup> FG%	3-17	17.6%
3PT%	0-2	0.0%
FT%	6-8	75%
4 <sup>th</sup> FG%	4-10	40.0%
3PT%	0-4	0.0%
FT%	9-9	100%
GM FG%	17-56	30.4%
3PT%	2-12	16.7%
FT%	18-25	72.0%

Technical Fouls::NONE

Dead Ball Rebounds: 5, 0

	SC	Vandy
Biggest lead	30 (4 <sup>th</sup> 0:32)	0 (1 <sup>st</sup> 10:00)
Best Scoring Run	10(3 <sup>rd</sup> 4:43)	7(3 <sup>rd</sup> 8:53)
Lead Changes	0	
Times Tied	0	
Time with Lead	38:43	00:00

	SC	Vandy
Points from		
Turnovers	23	3
Paint	48	16
Second Chance	17	12
Fast Breaks	19	0
Bench	56	30

	Period by Period Scoring				
	1st	2nd	3rd	4th	TOT
SC	24	11	21	26	82
Vandy	11	14	12	17	54



**Period 1**

**Quarter Starters:**

<b>Vandy</b>	5 Kapinus L	10 Nwaba J	11 Oliver J	12 Pierre K	23 Moore I
<b>SC</b>	0 Paopao T	20 Feagin S	21 Kitts C	23 Hall B	25 Johnson R

Game Time	Vandy	Score	Diff	SC
10:00	12 PIERRE K jumpball lost			21 KITTS C jumpball won
09:42	11 OLIVER J steal (1)			20 FEAGIN S turnover lost ball (1)
09:21	12 PIERRE K 2pt FG from turnover in the paint, layup missed			
09:16				23 HALL B defensive rebound (1)
09:07				0 PAOPAO T 2pt FG outside the paint, jump shot missed
09:05	5 KAPINUS L defensive rebound (1)			
09:05	5 KAPINUS L foul drawn (1)			21 KITTS C foul personal (1 - 1)
08:52	11 OLIVER J 2pt FG in the paint, jump shot missed			
08:48				21 KITTS C defensive rebound (1)
08:43		<b>0-2</b>	<b>-2</b>	0 PAOPAO T 2pt FG outside the paint, jump shot made (2)
08:43				25 JOHNSON R assist (1)
08:22	12 PIERRE K 2pt FG outside the paint, jump shot missed			
08:20				25 JOHNSON R defensive rebound (1)
08:06		<b>0-4</b>	<b>-4</b>	0 PAOPAO T 2pt FG in the paint, jump shot made (4)
08:06				21 KITTS C assist (1)
07:55	23 MOORE I 2pt FG outside the paint, jump shot missed			
07:53				defensive rebound (4)
07:53	10 NWABA J substitution out			
07:53	1 BLAKES M substitution in			
07:35		<b>0-7</b>	<b>-7</b>	0 PAOPAO T 3pt FG , jump shot made (7)
07:16	5 KAPINUS L 3pt FG , jump shot missed			
07:10	12 PIERRE K offensive rebound (1)			
07:07	1 BLAKES M 3pt FG second chance, jump shot made (3)	<b>3-7</b>	<b>-4</b>	
07:07	5 KAPINUS L assist (1)			
06:54				23 HALL B 3pt FG , jump shot missed
06:51	23 MOORE I defensive rebound (1)			
06:40	23 MOORE I turnover bad pass (1)			
06:36				20 FEAGIN S turnover bad pass (2)
06:24	5 KAPINUS L 2pt FG from turnover in the paint, pull up jump shot missed			
06:21				21 KITTS C defensive rebound (2)
06:08				23 HALL B 2pt FG in the paint, layup missed
06:07				20 FEAGIN S offensive rebound (1)
06:07	23 MOORE I foul shooting (1 - 1)			20 FEAGIN S foul drawn (1)
06:07		<b>3-8</b>	<b>-5</b>	20 FEAGIN S free throw 1 - 2 made (1)
06:07		<b>3-9</b>	<b>-6</b>	20 FEAGIN S free throw 2 - 2 made (2)
05:56	12 PIERRE K foul drawn (1)			20 FEAGIN S foul personal (1 - 2)
05:56				20 FEAGIN S substitution out
05:56				25 JOHNSON R substitution out
05:56				8 EDWARDS J substitution in
05:56				12 FULWILEY M substitution in
05:55	1 BLAKES M 2pt FG outside the paint, jump shot made (5)	<b>5-9</b>	<b>-4</b>	
05:55	23 MOORE I assist (1)			



**Officials:** Melissa Barlow, Fatou Cissoko-Stephens, Teresa Stuck

Game Time	Vandy	Score	Diff	SC
05:32	12 PIERRE K foul drawn (2)			21 KITTS C foul offensive (2 - 3)
05:32				21 KITTS C turnover offensive (1)
05:32				21 KITTS C substitution out
05:32				30 DAUDA M substitution in
05:23	12 PIERRE K 2pt FG from turnover in the paint, layup missed			
05:20				30 DAUDA M defensive rebound (1)
05:09		<b>5-11</b>	<b>-6</b>	8 EDWARDS J 2pt FG in the paint, jump shot made (2)
05:09				12 FULWILEY M assist (1)
04:56	12 PIERRE K 2pt FG in the paint, pull up jump shot missed			
04:54	5 KAPINUS L offensive rebound (2)			
04:54	Timeout media			
04:52	1 BLAKES M 2pt FG second chance outside the paint, jump shot missed			
04:50				30 DAUDA M defensive rebound (2)
04:39				23 HALL B 3pt FG , jump shot missed
04:35				8 EDWARDS J offensive rebound (1)
04:29				23 HALL B 3pt FG second chance , jump shot missed
04:27				8 EDWARDS J offensive rebound (2)
04:27	1 BLAKES M foul personal (1 - 2)			8 EDWARDS J foul drawn (1)
04:27	5 KAPINUS L substitution out			
04:27	4 GREENE M substitution in			
04:27				23 HALL B substitution out
04:27				5 JOHNSON T substitution in
04:21	4 GREENE M foul personal (1 - 3)			30 DAUDA M foul drawn (1)
04:19				5 JOHNSON T 2pt FG second chance outside the paint, jump shot missed
04:17				30 DAUDA M offensive rebound (3)
04:16				30 DAUDA M 2pt FG second chance in the paint, layup missed
04:14				30 DAUDA M offensive rebound (4)
04:14		<b>5-13</b>	<b>-8</b>	30 DAUDA M 2pt FG second chance in the paint, tip-in layup made (2)
03:53	12 PIERRE K 2pt FG outside the paint, jump shot made (2)	<b>7-13</b>	<b>-6</b>	
03:36	1 BLAKES M foul shooting (2 - 4)			0 PAOPAO T foul drawn (1)
03:36	11 OLIVER J substitution out			
03:36	23 MOORE I substitution out			
03:36	5 KAPINUS L substitution in			
03:36	14 MITCHELL A substitution in			
03:36		<b>7-14</b>	<b>-7</b>	0 PAOPAO T free throw 1 - 2 made (8)
03:36		<b>7-15</b>	<b>-8</b>	0 PAOPAO T free throw 2 - 2 made (9)
03:24	4 GREENE M 3pt FG , jump shot missed			
03:23				0 PAOPAO T defensive rebound (1)
03:06				0 PAOPAO T 2pt FG in the paint, driving layup missed
03:05	defensive rebound (5)			
02:53	14 MITCHELL A turnover bad pass (1)			30 DAUDA M steal (1)
02:34				8 EDWARDS J 2pt FG from turnover outside the paint, pull up jump shot missed
02:30	1 BLAKES M defensive rebound (1)			
02:28	1 BLAKES M turnover bad pass (1)			0 PAOPAO T steal (1)
02:17	5 KAPINUS L foul personal (1 - 5)			12 FULWILEY M foul drawn (1)
02:17				0 PAOPAO T substitution out



Official Basketball Play by Play - 1st Period  
**South Carolina at Vanderbilt**  
 02/23/25 Memorial Gymnasium (Vanderbilt), Nashville  
 2024-25 Women's Basketball

**Game Time:** 2:00 PM  
**Game Duration:** 2:04  
**Attendance:** 7,805

**Officials:** Melissa Barlow, Fatou Cissoko-Stephens, Teresa Stuck

Game Time	Vandy	Score	Diff	SC
02:17				25 JOHNSON R substitution in
02:17	1 BLAKES M substitution out			
02:17	23 MOORE I substitution in			
02:17				30 DAUDA M substitution out
02:17				35 WALKER S substitution in
02:17		<b>7-16</b>	<b>-9</b>	12 FULWILEY M free throw 1 - 2 made (1)
02:17		<b>7-17</b>	<b>-10</b>	12 FULWILEY M free throw 2 - 2 made (2)
02:05	14 MITCHELL A turnover bad pass (2)			8 EDWARDS J steal (1)
02:05	14 MITCHELL A substitution out			
02:05	1 BLAKES M substitution in			
01:50				25 JOHNSON R turnover travel (1)
01:45	23 MOORE I turnover bad pass (2)			12 FULWILEY M steal (1)
01:41		<b>7-19</b>	<b>-12</b>	12 FULWILEY M 2pt FG fast break from turnover in the paint, driving layup made (4)
01:25	12 PIERRE K 2pt FG outside the paint, jump shot missed			
01:23				25 JOHNSON R defensive rebound (2)
01:15		<b>7-21</b>	<b>-14</b>	12 FULWILEY M 2pt FG in the paint, driving layup made (6)
01:12	Timeout 30 Sec			
01:12	1 BLAKES M substitution out			
01:12	11 OLIVER J substitution in			
00:58	5 KAPINUS L 2pt FG in the paint, layup made (2)	<b>9-21</b>	<b>-12</b>	
00:58	4 GREENE M assist (1)			
00:46		<b>9-24</b>	<b>-15</b>	12 FULWILEY M 3pt FG , jump shot made (9)
00:46				35 WALKER S assist (1)
00:30	12 PIERRE K 2pt FG outside the paint, jump shot made (4)	<b>11-24</b>	<b>-13</b>	
<b>END OF PERIOD</b>				
<b>Vandy 11-24 SC</b>				



**Officials:** Melissa Barlow, Fatou Cissoko-Stephens, Teresa Stuck

**South Carolina - 24**

NO.	Name	F	Min	FG			Rebounds			Fouls		TP	AS	TO	ST	Blocks		+/-	
				M-A	M-A	M-A	OR	DR	TOT	PF	FD					BS	BA		
20	Sania Feagin	F	04:04	0-0	0-0	2-2	1	0	1	1	1	2	0	2	0	0	0	6	
21	Chloe Kitts	F	04:28	0-0	0-0	0-0	0	2	2	2	0	0	1	1	0	0	0	4	
0	Te-Hina Paopao	G	07:43	3-5	1-1	2-2	0	1	1	0	1	9	0	0	1	0	0	8	
23	Bree Hall	G	05:33	0-4	0-3	0-0	0	1	1	0	0	0	0	0	0	0	0	6	
25	Raven Johnson	G	06:21	0-0	0-0	0-0	0	2	2	0	0	0	1	1	0	0	0	11	
8	Joyce Edwards		05:56	1-2	0-0	0-0	2	0	2	0	1	2	0	0	1	0	0	7	
12	MiLaysia Fulwiley		05:56	3-3	1-1	2-2	0	0	0	0	1	9	1	0	1	0	0	7	
30	Maryam Dauda		03:15	1-2	0-0	0-0	2	2	4	0	1	2	0	0	1	0	0	4	
5	Tessa Johnson		04:27	0-1	0-0	0-0	0	0	0	0	0	0	0	0	0	0	0	7	
35	Sakima Walker		02:17	0-0	0-0	0-0	0	0	0	0	0	0	1	0	0	0	0	5	
Team							0	1	1			0		0					
<b>Totals</b>				8-17	2-5	6-6	5	9	14	3	5	24	4	4	4	4	0	0	13

Shooting By Period		
1st FG%	8-17	47.1%
3PT%	2-5	40.0%
FT%	6-6	100%
GM FG%	8-17	47.1%
3PT%	2-5	40.0%
FT%	6-6	100.0%

Dead Ball Rebounds: 0, 0

**Technical Fouls:** NONE

**Vanderbilt - 11**

NO.	Name	F	Min	FG			Rebounds			Fouls		TP	AS	TO	ST	Blocks		+/-
				M-A	M-A	M-A	OR	DR	TOT	PF	FD					BS	BA	
10	Jane Nwaba	F	02:07	0-0	0-0	0-0	0	0	0	0	0	0	0	0	0	0	0	-4
12	Khamil Pierre	F	10:00	2-7	0-0	0-0	1	0	1	0	2	4	0	0	0	0	0	-13
5	Leilani Kapinus	G	09:09	1-3	0-1	0-0	1	1	2	1	1	2	1	0	0	0	0	-13
11	Jordyn Oliver	G	07:36	0-1	0-0	0-0	0	0	0	0	0	0	0	0	1	0	0	-5
23	Iyana Moore	G	08:41	0-1	0-0	0-0	0	1	1	1	0	0	1	2	0	0	0	-11
1	Mikayla Blakes		06:29	2-3	1-1	0-0	0	1	1	2	0	5	0	1	0	0	0	-8
4	Madison Greene		04:27	0-1	0-1	0-0	0	0	0	1	0	0	1	0	0	0	0	-7
14	Aiyana Mitchell		01:31	0-0	0-0	0-0	0	0	0	0	0	0	0	2	0	0	0	-4
Team							0	1	1			0		0				
<b>Totals</b>				5-16	1-3	0-0	2	4	6	5	3	11	3	5	1	0	0	-13

Shooting By Period		
1st FG%	5-16	31.3%
3PT%	1-3	33.3%
FT%	0-0	0%
GM FG%	5-16	31.3%
3PT%	1-3	33.3%
FT%	0-0	0.0%

Dead Ball Rebounds: 0, 0

**Technical Fouls:** NONE

	SC	Vandy
<b>Biggest lead</b>	15 (1 <sup>st</sup> 0:46)	0 (1 <sup>st</sup> 10:00)
<b>Best Scoring Run</b>	8(1 <sup>st</sup> 1:15)	3(1 <sup>st</sup> 7:07)
<b>Lead Changes</b>	0	
<b>Times Tied</b>	0	
<b>Time with Lead</b>	08:43	00:00

Points from	SC	Vandy
<b>Turnovers</b>	4	0
<b>Paint</b>	10	2
<b>Second Chance</b>	4	3
<b>Fast Breaks</b>	2	0
<b>Bench</b>	13	5

	Period by Period Scoring				
	1st	2nd	3rd	4th	TOT
<b>SC</b>	24	11	21	26	82
<b>Vandy</b>	11	14	12	17	54



**Period 2**

**Quarter Starters:**

<b>Vandy</b>	1 Blakes M	4 Greene M	5 Kapinus L	11 Oliver J	12 Pierre K
<b>SC</b>	5 Johnson T	8 Edwards J	23 Hall B	25 Johnson R	35 Walker S

Game Time	Vandy	Score	Diff	SC
10:00	23 MOORE I substitution out			
10:00	1 BLAKES M substitution in			
10:00				12 FULWILEY M substitution out
10:00				23 HALL B substitution in
09:51	11 OLIVER J 2pt FG in the paint, pull up jump shot made (2)	<b>13-24</b>	<b>-11</b>	
09:51	1 BLAKES M assist (1)			
09:24				25 JOHNSON R 2pt FG in the paint, driving layup missed
09:21				35 WALKER S offensive rebound (1)
09:20				35 WALKER S 2pt FG second chance in the paint, layup missed
09:16				8 EDWARDS J offensive rebound (3)
09:16				8 EDWARDS J 2pt FG second chance in the paint, layup missed
09:13				8 EDWARDS J offensive rebound (4)
09:13				8 EDWARDS J 2pt FG second chance in the paint, layup missed
09:10	12 PIERRE K defensive rebound (2)			
09:05	12 PIERRE K foul drawn (3)			25 JOHNSON R foul shooting (1 - 1)
09:05				35 WALKER S substitution out
09:05				20 FEAGIN S substitution in
09:05	12 PIERRE K free throw 1 - 2 missed			
09:05	offensive dead ball rebound (1)			
09:05	12 PIERRE K free throw 2 - 2 made (5)	<b>14-24</b>	<b>-10</b>	
08:36				5 JOHNSON T 3pt FG , jump shot missed
08:32				23 HALL B offensive rebound (2)
08:32		<b>14-26</b>	<b>-12</b>	23 HALL B 2pt FG second chance in the paint, layup made (2)
08:18	1 BLAKES M 2pt FG in the paint, layup missed			
08:15				5 JOHNSON T defensive rebound (1)
08:01	4 GREENE M foul personal (2 - 1)			23 HALL B foul drawn (1)
08:01				5 JOHNSON T substitution out
08:01				0 PAOPAO T substitution in
07:54	12 PIERRE K steal (1)			0 PAOPAO T turnover bad pass (1)
07:51	12 PIERRE K 2pt FG from turnover in the paint, layup missed			
07:48				20 FEAGIN S defensive rebound (2)
07:40				23 HALL B turnover travel (1)
07:40				25 JOHNSON R substitution out
07:40				12 FULWILEY M substitution in
07:30	1 BLAKES M 2pt FG from turnover in the paint, layup missed			
07:27				12 FULWILEY M defensive rebound (1)
07:18				23 HALL B 2pt FG in the paint, jump shot missed
07:16	1 BLAKES M defensive rebound (2)			
07:11	4 GREENE M 2pt FG in the paint, driving layup blocked			
07:11				0 PAOPAO T block (1)
07:06	5 KAPINUS L offensive rebound (3)			



Official Basketball Play by Play - 2nd Period  
**South Carolina at Vanderbilt**  
 02/23/25 Memorial Gymnasium (Vanderbilt), Nashville  
 2024-25 Women's Basketball

**Game Time:** 2:00 PM  
**Game Duration:** 2:04  
**Attendance:** 7,805

**Officials:** Melissa Barlow, Fatou Cissoko-Stephens, Teresa Stuck

Game Time	Vandy	Score	Diff	SC
07:05	5 KAPINUS L 2pt FG second chance in the paint, layup made (4)	<b>16-26</b>	<b>-10</b>	
06:55	11 OLIVER J steal (2)			0 PAOPAO T turnover bad pass (2)
06:49	11 OLIVER J turnover bad pass (1)			
06:49				20 FEAGIN S substitution out
06:49				21 KITTS C substitution in
06:35				0 PAOPAO T 3pt FG from turnover, jump shot missed
06:32	5 KAPINUS L defensive rebound (4)			
06:11	1 BLAKES M 3pt FG , jump shot made (8)	<b>19-26</b>	<b>-7</b>	
06:11	4 GREENE M assist (2)			
05:45	jump ball situation			
05:40		<b>19-28</b>	<b>-9</b>	8 EDWARDS J 2pt FG in the paint, layup made (4)
05:40				0 PAOPAO T assist (1)
05:35	4 GREENE M turnover bad pass (1)			0 PAOPAO T steal (2)
05:30		<b>19-30</b>	<b>-11</b>	12 FULWILEY M 2pt FG fast break from turnover in the paint, driving layup made (11)
05:30				0 PAOPAO T assist (2)
05:08	1 BLAKES M 2pt FG outside the paint, jump shot missed			
05:06				0 PAOPAO T defensive rebound (2)
05:00				23 HALL B 3pt FG , jump shot missed
04:58	12 PIERRE K defensive rebound (3)			
04:55	1 BLAKES M foul drawn (1)			0 PAOPAO T foul personal (1 - 2)
04:55	Timeout media			
04:55	5 KAPINUS L substitution out			
04:55	12 PIERRE K substitution out			
04:55	14 MITCHELL A substitution in			
04:55	23 MOORE I substitution in			
04:55				23 HALL B substitution out
04:55				5 JOHNSON T substitution in
04:36	1 BLAKES M foul drawn (2)			12 FULWILEY M foul personal (1 - 3)
04:30	4 GREENE M 2pt FG in the paint, jump shot blocked			
04:30				8 EDWARDS J block (1)
04:26				12 FULWILEY M defensive rebound (2)
04:21				8 EDWARDS J 2pt FG in the paint, layup missed
04:19				8 EDWARDS J offensive rebound (5)
04:15				12 FULWILEY M 3pt FG second chance, jump shot missed
04:12				8 EDWARDS J offensive rebound (6)
04:09		<b>19-32</b>	<b>-13</b>	12 FULWILEY M 2pt FG second chance in the paint, layup made (13)
03:47	23 MOORE I 3pt FG , jump shot missed			
03:43				0 PAOPAO T defensive rebound (3)
03:35				21 KITTS C 3pt FG , jump shot missed
03:32	1 BLAKES M defensive rebound (3)			
03:26	1 BLAKES M foul drawn (3)			8 EDWARDS J foul personal (1 - 4)
03:26	14 MITCHELL A substitution out			
03:26	12 PIERRE K substitution in			
03:26				21 KITTS C substitution out
03:26				20 FEAGIN S substitution in
03:23	12 PIERRE K 2pt FG outside the paint, jump shot made (7)	<b>21-32</b>	<b>-11</b>	
03:23	23 MOORE I assist (2)			



Official Basketball Play by Play - 2nd Period  
**South Carolina at Vanderbilt**  
 02/23/25 Memorial Gymnasium (Vanderbilt), Nashville  
 2024-25 Women's Basketball

**Game Time:** 2:00 PM  
**Game Duration:** 2:04  
**Attendance:** 7,805

**Officials:** Melissa Barlow, Fatou Cissoko-Stephens, Teresa Stuck

Game Time	Vandy	Score	Diff	SC
03:04				8 EDWARDS J 2pt FG in the paint, layup missed
03:01				8 EDWARDS J offensive rebound (7)
03:00				8 EDWARDS J 2pt FG second chance in the paint, layup missed
02:58				8 EDWARDS J offensive rebound (8)
02:58	12 PIERRE K foul shooting (1 - 2)			8 EDWARDS J foul drawn (2)
02:58	23 MOORE I substitution out			
02:58	5 KAPINUS L substitution in			
02:58				8 EDWARDS J free throw 1 - 2 missed
02:58				offensive dead ball rebound (1)
02:58				8 EDWARDS J free throw 2 - 2 missed
02:58	defensive rebound (13)			
02:58	5 KAPINUS L foul drawn (2)			20 FEAGIN S foul personal (2 - 5)
02:58				20 FEAGIN S substitution out
02:58				30 DAUDA M substitution in
02:58	5 KAPINUS L free throw 1 - 2 missed			
02:58	offensive dead ball rebound (2)			
02:58	5 KAPINUS L free throw 2 - 2 made (5)	<b>22-32</b>	<b>-10</b>	
02:36		<b>22-34</b>	<b>-12</b>	12 FULWILEY M 2pt FG in the paint, layup made (15)
02:36				8 EDWARDS J assist (1)
02:19	4 GREENE M 3pt FG , jump shot missed			
02:17				5 JOHNSON T defensive rebound (2)
02:15	4 GREENE M steal (1)			5 JOHNSON T turnover bad pass (1)
02:10	4 GREENE M foul drawn (1)			5 JOHNSON T foul shooting (1 - 6)
02:10	4 GREENE M free throw 1 - 2 missed			
02:10	offensive dead ball rebound (3)			
02:10	4 GREENE M free throw 2 - 2 missed			
02:09				8 EDWARDS J defensive rebound (9)
01:58				12 FULWILEY M 2pt FG in the paint, driving layup missed
01:54				offensive rebound (31)
01:41	11 OLIVER J foul shooting (1 - 3)			30 DAUDA M foul drawn (2)
01:41		<b>22-35</b>	<b>-13</b>	30 DAUDA M free throw 1 - 2 made (3)
01:41				30 DAUDA M free throw 2 - 2 missed
01:40	12 PIERRE K defensive rebound (4)			
01:27	1 BLAKES M 2pt FG outside the paint, jump shot made (10)	<b>24-35</b>	<b>-11</b>	
01:10	5 KAPINUS L foul shooting (2 - 4)			12 FULWILEY M foul drawn (2)
01:10				12 FULWILEY M free throw 1 - 2 missed
01:10				offensive dead ball rebound (2)
01:10				12 FULWILEY M free throw 2 - 2 missed
01:09	12 PIERRE K defensive rebound (5)			
00:57	4 GREENE M turnover travel (2)			
00:57				Timeout 30 Sec
00:43				5 JOHNSON T 3pt FG from turnover, jump shot missed
00:40	5 KAPINUS L defensive rebound (5)			
00:33	1 BLAKES M foul drawn (4)			12 FULWILEY M foul shooting (2 - 7)
00:33				12 FULWILEY M substitution out
00:33				23 HALL B substitution in
00:33	1 BLAKES M free throw 1 - 2 missed			
00:33	offensive dead ball rebound (4)			





Official Basketball Play by Play - 2nd Period  
**South Carolina at Vanderbilt**  
02/23/25 Memorial Gymnasium (Vanderbilt), Nashville  
2024-25 Women's Basketball

**Game Time:** 2:00 PM  
**Game Duration:** 2:04  
**Attendance:** 7,805

**Officials:** Melissa Barlow, Fatou Cissoko-Stephens, Teresa Stuck

Game Time	Vandy	Score	Diff	SC
00:33	1 BLAKES M free throw 2 - 2 made (11)	25-35	-10	
00:01				0 PAOPAO T 2pt FG in the paint, layup missed
00:01	12 PIERRE K defensive rebound (6)			
<b>END OF PERIOD</b>				
<b>Vandy 25-35 SC</b>				



Officials: Melissa Barlow, Fatou Cissoko-Stephens, Teresa Stuck

South Carolina - 11

NO.	Name	F	Min	FG			Rebounds			Fouls		TP	AS	TO	ST	Blocks		+/-
				M-A	M-A	M-A	OR	DR	TOT	PF	FD					BS	BA	
20	Sania Feagin	F	02:44	0-0	0-0	0-0	0	1	1	1	0	0	0	0	0	0	0	-3
21	Chloe Kitts	F	03:23	0-1	0-1	0-0	0	0	0	0	0	0	0	0	0	0	0	3
0	Te-Hina Paopao	G	08:01	0-2	0-1	0-0	0	2	2	1	0	0	2	2	1	1	0	-2
23	Bree Hall	G	05:39	1-3	0-1	0-0	1	0	1	0	1	2	0	1	0	0	0	-3
25	Raven Johnson	G	02:20	0-1	0-0	0-0	0	0	0	1	0	0	0	0	0	0	0	-1
8	Joyce Edwards		10:00	1-6	0-0	0-2	6	1	7	1	1	2	1	0	0	1	0	-3
35	Sakima Walker		00:55	0-1	0-0	0-0	1	0	1	0	0	0	0	0	0	0	0	-2
12	MiLaysia Fulwiley		07:06	3-5	0-1	0-2	0	2	2	2	1	6	0	0	0	0	0	-1
5	Tessa Johnson		06:54	0-2	0-2	0-0	0	2	2	1	0	0	0	1	0	0	0	-2
30	Maryam Dauda		02:58	0-0	0-0	1-2	0	0	0	0	1	1	0	0	0	0	0	-1
Team							1	0	1			0		0				
<b>Totals</b>				5-21	0-6	1-6	9	8	17	7	4	11	3	4	1	2	0	-3

Shooting By Period		
2 <sup>nd</sup> FG%	5-21	23.8%
3PT%	0-6	0.0%
FT%	1-6	16.7%
GM FG%	5-21	23.8%
3PT%	0-6	0.0%
FT%	1-6	16.7%

Dead Ball Rebounds: 2, 0

Technical Fouls::NONE

Vanderbilt - 14

NO.	Name	F	Min	FG			Rebounds			Fouls		TP	AS	TO	ST	Blocks		+/-
				M-A	M-A	M-A	OR	DR	TOT	PF	FD					BS	BA	
10	Jane Nwaba	F	00:00	0-0	0-0	0-0	0	0	0	0	0	0	0	0	0	0	0	0
12	Khamil Pierre	F	08:31	1-2	0-0	1-2	0	5	5	1	1	3	0	0	1	0	0	5
5	Leilani Kapinus	G	08:03	1-1	0-0	1-2	1	2	3	1	1	3	0	0	0	0	0	3
11	Jordyn Oliver	G	10:00	1-1	0-0	0-0	0	0	0	1	0	2	0	1	1	0	0	3
23	Iyana Moore	G	01:57	0-1	0-1	0-0	0	0	0	0	0	0	1	0	0	0	0	0
4	Madison Greene		10:00	0-3	0-1	0-2	0	0	0	1	1	0	1	2	1	0	2	3
1	Mikayla Blakes		10:00	2-5	1-1	1-2	0	2	2	0	4	6	1	0	0	0	0	3
14	Aiyana Mitchell		01:29	0-0	0-0	0-0	0	0	0	0	0	0	0	0	0	0	0	-2
Team							0	1	1			0		0				
<b>Totals</b>				5-13	1-3	3-8	1	10	11	4	7	14	3	3	3	0	2	3

Shooting By Period		
2 <sup>nd</sup> FG%	5-13	38.5%
3PT%	1-3	33.3%
FT%	3-8	37.5%
GM FG%	5-13	38.5%
3PT%	1-3	33.3%
FT%	3-8	37.5%

Dead Ball Rebounds: 4, 0

Technical Fouls::NONE

	SC	Vandy
Biggest lead	13 (2 <sup>nd</sup> 4:09)	0 (1 <sup>st</sup> 10:00)
Best Scoring Run	6(2 <sup>nd</sup> 4:09)	5(2 <sup>nd</sup> 6:11)
Lead Changes	0	
Times Tied	0	
Time with Lead	09:51	00:00

Points from	SC	Vandy
Turnovers	2	0
Paint	10	4
Second Chance	5	2
Fast Breaks	2	0
Bench	9	6

	Period by Period Scoring				
	1st	2nd	3rd	4th	TOT
SC	24	11	21	26	82
Vandy	11	14	12	17	54



Officials: Melissa Barlow, Fatou Cissoko-Stephens, Teresa Stuck

South Carolina - 35

NO.	Name	F	Min	FG			3P			FT			Rebounds			Fouls		TP	AS	TO	ST	Blocks		+/-
				M-A	M-A	M-A	OR	DR	TOT	PF	FD	OR	DR	TOT	BS	BA								
20	Sania Feagin	F	06:48	0-0	0-0	2-2	1	1	2	2	1	2	0	1	2	0	2	2	0	0	0	0	3	
21	Chloe Kitts	F	07:51	0-1	0-1	0-0	0	2	2	2	0	2	0	0	0	1	1	1	0	0	0	0	7	
0	Te-Hina Paopao	G	15:44	3-7	1-2	2-2	0	3	3	1	1	9	2	2	2	2	2	1	0	0	0	6		
23	Bree Hall	G	11:12	1-7	0-4	0-0	1	1	2	0	1	2	0	1	2	0	1	0	0	0	0	3		
25	Raven Johnson	G	08:41	0-1	0-0	0-0	0	2	2	1	0	0	1	1	1	1	0	0	0	0	0	10		
8	Joyce Edwards		15:56	2-8	0-0	0-2	8	1	9	1	2	4	1	0	1	1	0	1	1	0	0	4		
12	MiLaysia Fulwiley		13:02	6-8	1-2	2-4	0	2	2	2	2	15	1	0	1	0	1	0	0	0	6			
30	Maryam Dauda		06:13	1-2	0-0	1-2	2	2	4	0	2	3	0	0	1	0	0	1	0	0	0	3		
5	Tessa Johnson		11:21	0-3	0-2	0-0	0	2	2	1	0	0	0	0	1	0	0	0	0	0	0	5		
35	Sakima Walker		03:12	0-1	0-0	0-0	1	0	1	0	0	0	1	0	0	0	0	0	0	0	0	3		
Team							1	1	2			0			0									
<b>Totals</b>				13-38	2-11	7-12	14	17	31	10	9	35	7	8	5	2	0	10						

Shooting By Period		
1 <sup>st</sup> FG%	8-17	47.1%
3PT%	2-5	40.0%
FT%	6-6	100%
2 <sup>nd</sup> FG%	5-21	23.8%
3PT%	0-6	0.0%
FT%	1-6	16.7%
GM FG%	13-38	34.2%
3PT%	2-11	18.2%
FT%	7-12	58.3%

Dead Ball Rebounds: 2, 0

Technical Fouls::NONE

Vanderbilt - 25

NO.	Name	F	Min	FG			3P			FT			Rebounds			Fouls		TP	AS	TO	ST	Blocks		+/-
				M-A	M-A	M-A	OR	DR	TOT	PF	FD	OR	DR	TOT	BS	BA								
10	Jane Nwaba	F	02:07	0-0	0-0	0-0	0	0	0	0	0	0	0	0	0	0	0	0	0	0	0	0	-4	
12	Khamil Pierre	F	18:31	3-9	0-0	1-2	1	5	6	1	3	7	0	0	1	0	0	1	0	0	0	-8		
5	Leilani Kapinus	G	17:12	2-4	0-1	1-2	2	3	5	2	2	5	1	0	0	0	0	0	0	0	0	-10		
11	Jordyn Oliver	G	17:36	1-2	0-0	0-0	0	0	0	1	0	2	0	1	2	0	0	2	0	0	0	-2		
23	Iyana Moore	G	10:38	0-2	0-1	0-0	0	1	1	1	0	0	2	2	0	0	0	2	0	0	0	-11		
1	Mikayla Blakes		16:29	4-8	2-2	1-2	0	3	3	2	4	11	1	1	0	0	0	1	0	0	0	-5		
4	Madison Greene		14:27	0-4	0-2	0-2	0	0	0	2	1	0	2	2	1	0	2	1	0	2	0	-4		
14	Aiyana Mitchell		03:00	0-0	0-0	0-0	0	0	0	0	0	0	0	0	2	0	0	2	0	0	0	-6		
Team							0	2	2			0			0									
<b>Totals</b>				10-29	2-6	3-8	3	14	17	9	10	25	6	8	4	0	2	-10						

Shooting By Period		
1 <sup>st</sup> FG%	5-16	31.3%
3PT%	1-3	33.3%
FT%	0-0	0%
2 <sup>nd</sup> FG%	5-13	38.5%
3PT%	1-3	33.3%
FT%	3-8	37.5%
GM FG%	10-29	34.5%
3PT%	2-6	33.3%
FT%	3-8	37.5%

Dead Ball Rebounds: 4, 0

Technical Fouls::NONE

	SC	Vandy
Biggest lead	15 (1 <sup>st</sup> 0:46)	0 (1 <sup>st</sup> 10:00)
Best Scoring Run	8(1 <sup>st</sup> 1:15)	5(2 <sup>nd</sup> 9:05)
Lead Changes	0	
Times Tied	0	
Time with Lead	18:43	00:00

Points from	SC	Vandy
Turnovers	6	0
Paint	20	6
Second Chance	9	5
Fast Breaks	4	0
Bench	22	11

	Period by Period Scoring				
	1st	2nd	3rd	4th	TOT
SC	24	11	21	26	82
Vandy	11	14	12	17	54



**Period 3**

**Quarter Starters:**

<b>Vandy</b>	1 Blakes M	10 Nwaba J	11 Oliver J	12 Pierre K	23 Moore I
<b>SC</b>	0 Paopao T	20 Feagin S	21 Kitts C	23 Hall B	25 Johnson R

Game Time	Vandy	Score	Diff	SC
10:00	4 GREENE M substitution out			
10:00	5 KAPINUS L substitution out			
10:00	10 NWABA J substitution in			
10:00	23 MOORE I substitution in			
10:00				5 JOHNSON T substitution out
10:00				8 EDWARDS J substitution out
10:00				30 DAUDA M substitution out
10:00				20 FEAGIN S substitution in
10:00				21 KITTS C substitution in
10:00				25 JOHNSON R substitution in
09:48	12 PIERRE K 2pt FG in the paint, jump shot made (9)	<b>27-35</b>	<b>-8</b>	
09:31				0 PAOPAO T 2pt FG in the paint, layup missed
09:27	10 NWABA J defensive rebound (1)			
09:18	23 MOORE I turnover bad pass (3)			21 KITTS C steal (1)
09:07				21 KITTS C 2pt FG from turnover in the paint, turnaround jump shot missed
09:05	1 BLAKES M defensive rebound (4)			
08:53	12 PIERRE K 2pt FG outside the paint, jump shot made (11)	<b>29-35</b>	<b>-6</b>	
08:53	1 BLAKES M assist (2)			
08:29	11 OLIVER J steal (3)			20 FEAGIN S turnover lost ball (3)
08:21	1 BLAKES M 2pt FG from turnover in the paint, layup missed			
08:16	1 BLAKES M offensive rebound (5)			
08:16				20 FEAGIN S substitution out
08:16				8 EDWARDS J substitution in
08:07	1 BLAKES M 2pt FG from turnover second chance outside the paint, jump shot blocked			
08:07				23 HALL B block (1)
08:02				23 HALL B defensive rebound (3)
07:54	10 NWABA J foul personal (1 - 1)			21 KITTS C foul drawn (1)
07:54	10 NWABA J substitution out			
07:54	5 KAPINUS L substitution in			
07:54	23 MOORE I steal (1)			25 JOHNSON R turnover bad pass (2)
07:54	12 PIERRE K 2pt FG from turnover in the paint, driving layup missed			
07:54				8 EDWARDS J defensive rebound (10)
07:29	12 PIERRE K foul shooting (2 - 2)			8 EDWARDS J foul drawn (3)
07:29		<b>29-36</b>	<b>-7</b>	8 EDWARDS J free throw 1 - 2 made (5)
07:29		<b>29-37</b>	<b>-8</b>	8 EDWARDS J free throw 2 - 2 made (6)
07:01	1 BLAKES M turnover lost ball (2)			8 EDWARDS J steal (2)
06:56		<b>29-39</b>	<b>-10</b>	8 EDWARDS J 2pt FG fast break from turnover in the paint, layup made (8)
06:56	23 MOORE I foul shooting (2 - 3)			8 EDWARDS J foul drawn (4)
06:56	23 MOORE I substitution out			
06:56	4 GREENE M substitution in			



Official Basketball Play by Play - 3rd Period  
**South Carolina at Vanderbilt**  
 02/23/25 Memorial Gymnasium (Vanderbilt), Nashville  
 2024-25 Women's Basketball

**Game Time:** 2:00 PM  
**Game Duration:** 2:04  
**Attendance:** 7,805

**Officials:** Melissa Barlow, Fatou Cissoko-Stephens, Teresa Stuck

Game Time	Vandy	Score	Diff	SC
06:56		<b>29-40</b>	<b>-11</b>	8 EDWARDS J free throw fast break 1 - 1 made (9)
06:41	5 KAPINUS L 2pt FG in the paint, jump shot missed			
06:38	offensive rebound (21)			
06:37	12 PIERRE K 2pt FG second chance in the paint, jump shot blocked			
06:37				25 JOHNSON R block (1)
06:35				25 JOHNSON R defensive rebound (3)
06:21	11 OLIVER J foul personal (2 - 4)			8 EDWARDS J foul drawn (5)
06:20				0 PAOPAO T 3pt FG , jump shot missed
06:18				8 EDWARDS J offensive rebound (11)
06:11	1 BLAKES M foul shooting (3 - 5)			0 PAOPAO T foul drawn (2)
06:11				0 PAOPAO T free throw 1 - 2 missed
06:11		<b>29-41</b>	<b>-12</b>	offensive dead ball rebound (3)
06:11				0 PAOPAO T free throw 2 - 2 made (10)
06:11	1 BLAKES M substitution out			
06:11	13 PISSOTT J substitution in			
05:56	12 PIERRE K 2pt FG in the paint, layup blocked			
05:56				8 EDWARDS J block (2)
05:53	12 PIERRE K offensive rebound (7)			
05:46	13 PISSOTT J 3pt FG second chance, jump shot missed			
05:41				21 KITTS C defensive rebound (3)
05:37		<b>29-43</b>	<b>-14</b>	8 EDWARDS J 2pt FG fast break in the paint, driving layup made (11)
05:37				0 PAOPAO T assist (3)
05:35	Timeout 30 Sec			
05:35	Timeout media			
05:35	5 KAPINUS L substitution out			
05:35	23 MOORE I substitution in			
05:35				25 JOHNSON R substitution out
05:35				12 FULWILEY M substitution in
05:07	23 MOORE I 2pt FG outside the paint, jump shot missed			
05:05	11 OLIVER J offensive rebound (1)			
05:03	11 OLIVER J turnover bad pass (2)			8 EDWARDS J steal (3)
04:46				12 FULWILEY M 2pt FG from turnover outside the paint, jump shot missed
04:44				8 EDWARDS J offensive rebound (12)
04:43		<b>29-45</b>	<b>-16</b>	8 EDWARDS J 2pt FG from turnover second chance in the paint, layup made (13)
04:23	13 PISSOTT J foul drawn (1)			21 KITTS C foul personal (3 - 1)
04:23	Timeout media			
04:23	4 GREENE M substitution out			
04:23	13 PISSOTT J substitution out			
04:23	1 BLAKES M substitution in			
04:23	5 KAPINUS L substitution in			
04:23				21 KITTS C substitution out
04:23				23 HALL B substitution out
04:23				1 MCDANIEL M substitution in
04:23				20 FEAGIN S substitution in
04:12	23 MOORE I foul drawn (1)			8 EDWARDS J foul shooting (2 - 2)
04:12	23 MOORE I free throw 1 - 2 made (1)	<b>30-45</b>	<b>-15</b>	



Official Basketball Play by Play - 3rd Period  
**South Carolina at Vanderbilt**  
 02/23/25 Memorial Gymnasium (Vanderbilt), Nashville  
 2024-25 Women's Basketball

**Game Time:** 2:00 PM  
**Game Duration:** 2:04  
**Attendance:** 7,805

**Officials:** Melissa Barlow, Fatou Cissoko-Stephens, Teresa Stuck

Game Time	Vandy	Score	Diff	SC
04:12	23 MOORE I free throw 2 - 2 missed			
04:11				20 FEAGIN S defensive rebound (3)
03:58	11 OLIVER J foul shooting (3 - 6)			8 EDWARDS J foul drawn (6)
03:58		<b>30-46</b>	<b>-16</b>	8 EDWARDS J free throw 1 - 2 made (14)
03:58		<b>30-47</b>	<b>-17</b>	8 EDWARDS J free throw 2 - 2 made (15)
03:58	11 OLIVER J substitution out			
03:58	14 MITCHELL A substitution in			
03:51	1 BLAKES M 3pt FG , jump shot missed			
03:48	12 PIERRE K offensive rebound (8)			
03:45	12 PIERRE K turnover travel (1)			
03:32				12 FULWILEY M 2pt FG from turnover in the paint, layup missed
03:29				12 FULWILEY M offensive rebound (3)
03:28		<b>30-49</b>	<b>-19</b>	12 FULWILEY M 2pt FG from turnover second chance in the paint, layup made (17)
03:11	23 MOORE I turnover lost ball (4)			1 MCDANIEL M steal (1)
03:05		<b>30-51</b>	<b>-21</b>	1 MCDANIEL M 2pt FG fast break from turnover in the paint, driving layup made (2)
02:48	14 MITCHELL A 2pt FG outside the paint, pull up jump shot missed			
02:47	1 BLAKES M offensive rebound (6)			
02:47	1 BLAKES M foul drawn (5)			12 FULWILEY M foul shooting (3 - 3)
02:47	23 MOORE I substitution out			
02:47	4 GREENE M substitution in			
02:47				0 PAOPAO T substitution out
02:47				23 HALL B substitution in
02:47	1 BLAKES M free throw 1 - 2 made (12)	<b>31-51</b>	<b>-20</b>	
02:47	1 BLAKES M free throw 2 - 2 made (13)	<b>32-51</b>	<b>-19</b>	
02:47				12 FULWILEY M substitution out
02:47				5 JOHNSON T substitution in
02:34	1 BLAKES M steal (1)			5 JOHNSON T turnover lost ball (2)
02:26	14 MITCHELL A 2pt FG from turnover in the paint, jump shot missed			
02:25	14 MITCHELL A offensive rebound (1)			
02:23	14 MITCHELL A 2pt FG from turnover second chance in the paint, layup missed			
02:15	5 KAPINUS L offensive rebound (6)			
02:15	5 KAPINUS L foul drawn (3)			20 FEAGIN S foul personal (3 - 4)
02:03	12 PIERRE K foul drawn (4)			8 EDWARDS J foul personal (3 - 5)
02:03				8 EDWARDS J substitution out
02:03				21 KITTS C substitution in
02:03	12 PIERRE K free throw 1 - 2 missed			
02:03	offensive dead ball rebound (5)			
02:03	12 PIERRE K free throw 2 - 2 made (12)	<b>33-51</b>	<b>-18</b>	
02:02				30 DAUDA M substitution in
02:02				21 KITTS C substitution out
02:00	4 GREENE M steal (2)			1 MCDANIEL M turnover lost ball (1)
01:45	1 BLAKES M foul drawn (6)			5 JOHNSON T foul personal (2 - 6)
01:45	1 BLAKES M free throw 1 - 2 made (14)	<b>34-51</b>	<b>-17</b>	
01:45	1 BLAKES M free throw 2 - 2 made (15)	<b>35-51</b>	<b>-16</b>	
01:38	jump ball situation			
01:23	1 BLAKES M foul shooting (4 - 7)			5 JOHNSON T foul drawn (1)



Official Basketball Play by Play - 3rd Period  
**South Carolina at Vanderbilt**  
 02/23/25 Memorial Gymnasium (Vanderbilt), Nashville  
 2024-25 Women's Basketball

**Game Time:** 2:00 PM  
**Game Duration:** 2:04  
**Attendance:** 7,805

**Officials:** Melissa Barlow, Fatou Cissoko-Stephens, Teresa Stuck

Game Time	Vandy	Score	Diff	SC
01:23		<b>35-52</b>	<b>-17</b>	5 JOHNSON T free throw 1 - 2 made (1)
01:23		<b>35-53</b>	<b>-18</b>	5 JOHNSON T free throw 2 - 2 made (2)
01:10	12 PIERRE K 2pt FG outside the paint, pull up jump shot missed			
01:08	1 BLAKES M offensive rebound (7)			
01:05	1 BLAKES M 2pt FG second chance in the paint, layup made (17)	<b>37-53</b>	<b>-16</b>	
00:30		<b>37-56</b>	<b>-19</b>	5 JOHNSON T 3pt FG , jump shot made (5)
00:30				1 MCDANIEL M assist (1)
00:06	1 BLAKES M 2pt FG in the paint, jump shot missed			
00:03				30 DAUDA M defensive rebound (5)
00:02	5 KAPINUS L foul shooting (3 - 8)			5 JOHNSON T foul drawn (2)
00:02				5 JOHNSON T free throw fast break 1 - 2 missed
00:02				offensive dead ball rebound (4)
00:02				5 JOHNSON T free throw fast break 2 - 2 missed
00:02	defensive rebound (29)			
<b>END OF PERIOD</b>				
<b>Vandy 37-56 SC</b>				



Officials: Melissa Barlow, Fatou Cissoko-Stephens, Teresa Stuck

South Carolina - 21

NO.	Name	F	Min	FG			Rebounds			Fouls		TP	AS	TO	ST	Blocks		+/-
				M-A	3P	FT	OR	DR	TOT	PF	FD					BS	BA	
20	Sania Feagin	F	06:07	0-0	0-0	0-0	0	1	1	1	0	0	1	0	0	0	-1	
21	Chloe Kitts	F	05:38	0-1	0-0	0-0	0	1	1	1	1	0	0	1	0	0	5	
0	Te-Hina Paopao	G	07:13	0-2	0-1	1-2	0	0	0	0	1	1	0	0	0	0	11	
23	Bree Hall	G	08:24	0-0	0-0	0-0	0	1	1	0	0	0	0	0	1	0	4	
25	Raven Johnson	G	04:25	0-0	0-0	0-0	0	1	1	0	0	0	1	0	1	0	4	
8	Joyce Edwards		06:13	3-3	0-0	5-5	2	1	3	2	4	11	0	0	2	1	13	
12	MiLaysia Fulwiley		02:48	1-3	0-0	0-0	1	0	1	1	0	2	0	0	0	0	5	
1	Maddy McDaniel		04:23	1-1	0-0	0-0	0	0	0	0	0	2	1	1	1	0	3	
5	Tessa Johnson		02:47	1-1	1-1	2-4	0	0	0	1	2	5	0	1	0	0	0	
30	Maryam Dauda		02:02	0-0	0-0	0-0	0	1	1	0	0	0	0	0	0	0	1	
Team							0	0	0		0		0					
<b>Totals</b>				6-11	1-2	8-11	3	6	9	6	8	21	2	4	4	3	0	9

Shooting By Period		
3 <sup>rd</sup> FG%	6-11	54.5%
3PT%	1-2	50.0%
FT%	8-11	72.7%
GM FG%	6-11	54.5%
3PT%	1-2	50.0%
FT%	8-11	72.7%

Dead Ball Rebounds: 2, 0

Technical Fouls::NONE

Vanderbilt - 12

NO.	Name	F	Min	FG			Rebounds			Fouls		TP	AS	TO	ST	Blocks		+/-
				M-A	3P	FT	OR	DR	TOT	PF	FD					BS	BA	
10	Jane Nwaba	F	02:06	0-0	0-0	0-0	0	1	1	1	0	0	0	0	0	0	4	
12	Khamil Pierre	F	10:00	2-6	0-0	1-2	2	0	2	1	1	5	0	1	0	2	-9	
5	Leilani Kapinus	G	06:42	0-1	0-0	0-0	1	0	1	1	1	0	0	0	0	0	-11	
11	Jordyn Oliver	G	06:02	0-0	0-0	0-0	1	0	1	2	0	0	1	1	0	0	-7	
23	Iyana Moore	G	05:52	0-1	0-0	1-2	0	0	0	1	1	1	0	2	1	0	-7	
4	Madison Greene		05:20	0-0	0-0	0-0	0	0	0	0	0	0	0	1	0	0	-4	
13	Justine Pissott		01:48	0-1	0-1	0-0	0	0	0	0	1	0	0	0	0	0	-4	
1	Mikayla Blakes		08:12	1-5	0-1	4-4	3	1	4	2	2	6	1	1	1	0	-5	
14	Aiyana Mitchell		03:58	0-3	0-0	0-0	1	0	1	0	0	0	0	0	0	0	-2	
Team							1	1	2		0		0					
<b>Totals</b>				3-17	0-2	6-8	9	3	12	8	6	12	1	5	4	0	3	-9

Shooting By Period		
3 <sup>rd</sup> FG%	3-17	17.6%
3PT%	0-2	0.0%
FT%	6-8	75%
GM FG%	3-17	17.6%
3PT%	0-2	0.0%
FT%	6-8	75.0%

Dead Ball Rebounds: 1, 0

Technical Fouls::NONE

	SC	Vandy
Biggest lead	21 (3 <sup>rd</sup> 3:05)	0 (1 <sup>st</sup> 10:00)
Best Scoring Run	10(3 <sup>rd</sup> 4:43)	5(3 <sup>rd</sup> 1:45)
Lead Changes	0	
Times Tied	0	
Time with Lead	09:48	00:00

	SC	Vandy
Points from		
Turnovers	9	3
Paint	10	4
Second Chance	5	5
Fast Breaks	7	0
Bench	20	6

Period by Period Scoring					
	1st	2nd	3rd	4th	TOT
SC	24	11	21	26	82
Vandy	11	14	12	17	54





**Period 4**

**Quarter Starters:**

<b>Vandy</b>	4 Greene M	5 Kapinus L	11 Oliver J	14 Mitchell A	23 Moore I
<b>SC</b>	0 Paopao T	8 Edwards J	21 Kitts C	23 Hall B	25 Johnson R

Game Time	Vandy	Score	Diff	SC
10:00	1 BLAKES M substitution out			
10:00	12 PIERRE K substitution out			
10:00	11 OLIVER J substitution in			
10:00	23 MOORE I substitution in			
10:00				1 MCDANIEL M substitution out
10:00				5 JOHNSON T substitution out
10:00				30 DAUDA M substitution out
10:00				0 PAOPAO T substitution in
10:00				21 KITTS C substitution in
10:00				25 JOHNSON R substitution in
10:00				20 FEAGIN S substitution out
10:00				8 EDWARDS J substitution in
09:34	5 KAPINUS L 2pt FG in the paint, layup missed			
09:32	5 KAPINUS L offensive rebound (7)			
09:18	11 OLIVER J 2pt FG second chance in the paint, turnaround jump shot made (4)	<b>39-56</b>	<b>-17</b>	
09:18	14 MITCHELL A assist (1)			
08:58		<b>39-59</b>	<b>-20</b>	0 PAOPAO T 3pt FG , jump shot made (13)
08:58				8 EDWARDS J assist (2)
08:47	4 GREENE M turnover lost ball (3)			25 JOHNSON R steal (1)
08:42		<b>39-61</b>	<b>-22</b>	25 JOHNSON R 2pt FG fast break from turnover in the paint, driving layup made (2)
08:22	14 MITCHELL A turnover bad pass (3)			0 PAOPAO T steal (3)
08:17		<b>39-63</b>	<b>-24</b>	8 EDWARDS J 2pt FG fast break from turnover in the paint, driving layup made (17)
08:17				0 PAOPAO T assist (4)
07:52	14 MITCHELL A 2pt FG in the paint, jump shot made (2)	<b>41-63</b>	<b>-22</b>	
07:52	14 MITCHELL A foul drawn (1)			21 KITTS C foul shooting (4 - 1)
07:52	4 GREENE M substitution out			
07:52	1 BLAKES M substitution in			
07:52	14 MITCHELL A free throw 1 - 1 made (3)	<b>42-63</b>	<b>-21</b>	
07:52	14 MITCHELL A substitution out			
07:52	12 PIERRE K substitution in			
07:36				25 JOHNSON R 2pt FG in the paint, jump shot missed
07:34				21 KITTS C offensive rebound (4)
07:29				23 HALL B 3pt FG second chance, jump shot missed
07:24				21 KITTS C offensive rebound (5)
07:09		<b>42-65</b>	<b>-23</b>	21 KITTS C 2pt FG second chance in the paint, layup made (2)
07:09				8 EDWARDS J assist (3)
07:09	12 PIERRE K foul shooting (3 - 1)			21 KITTS C foul drawn (2)
07:09				21 KITTS C free throw 1 - 1 missed
07:06	12 PIERRE K defensive rebound (9)			
06:53	12 PIERRE K 2pt FG outside the paint, turnaround jump shot made (14)	<b>44-65</b>	<b>-21</b>	



Official Basketball Play by Play - 4th Period  
**South Carolina at Vanderbilt**  
 02/23/25 Memorial Gymnasium (Vanderbilt), Nashville  
 2024-25 Women's Basketball

**Game Time:** 2:00 PM  
**Game Duration:** 2:04  
**Attendance:** 7,805

**Officials:** Melissa Barlow, Fatou Cissoko-Stephens, Teresa Stuck

Game Time	Vandy	Score	Diff	SC
06:53	5 KAPINUS L assist (2)			
06:25				8 EDWARDS J turnover 3 seconds (1)
06:10	23 MOORE I 3pt FG from turnover, jump shot missed			
06:06				25 JOHNSON R defensive rebound (4)
06:01	23 MOORE I foul personal (3 - 2)			8 EDWARDS J foul drawn (7)
06:01				0 PAOPAO T substitution out
06:01				12 FULWILEY M substitution in
05:59				23 HALL B 3pt FG , jump shot missed
05:57	12 PIERRE K defensive rebound (10)			
05:53	12 PIERRE K turnover lost ball (2)			23 HALL B steal (1)
05:46		<b>44-67</b>	<b>-23</b>	21 KITTS C 2pt FG from turnover in the paint, jump shot made (4)
05:46				25 JOHNSON R assist (2)
05:27	12 PIERRE K 2pt FG in the paint, pull up jump shot missed			
05:23	23 MOORE I offensive rebound (2)			
05:16	1 BLAKES M turnover lost ball (3)			12 FULWILEY M steal (2)
05:12		<b>44-69</b>	<b>-25</b>	12 FULWILEY M 2pt FG fast break from turnover in the paint, driving layup made (19)
05:10	Timeout 30 Sec			
05:10	Timeout media			
05:10	12 PIERRE K substitution out			
05:10	23 MOORE I substitution out			
05:10	4 GREENE M substitution in			
05:10	14 MITCHELL A substitution in			
04:55	14 MITCHELL A 2pt FG in the paint, layup made (5)	<b>46-69</b>	<b>-23</b>	
04:55	11 OLIVER J assist (1)			
04:33		<b>46-71</b>	<b>-25</b>	25 JOHNSON R 2pt FG in the paint, layup made (4)
04:33				21 KITTS C assist (2)
04:10	4 GREENE M 3pt FG , jump shot missed			
04:08				21 KITTS C defensive rebound (6)
03:56		<b>46-74</b>	<b>-28</b>	12 FULWILEY M 3pt FG , jump shot made (22)
03:56				21 KITTS C assist (3)
03:36	5 KAPINUS L foul drawn (4)			12 FULWILEY M foul personal (4 - 2)
03:36				8 EDWARDS J substitution out
03:36				21 KITTS C substitution out
03:36				23 HALL B substitution out
03:36				25 JOHNSON R substitution out
03:36				1 MCDANIEL M substitution in
03:36				5 JOHNSON T substitution in
03:36				15 TAC A substitution in
03:36				30 DAUDA M substitution in
03:24	14 MITCHELL A foul drawn (2)			15 TAC A foul shooting (1 - 3)
03:24	14 MITCHELL A free throw 1 - 2 made (6)	<b>47-74</b>	<b>-27</b>	
03:24	14 MITCHELL A free throw 2 - 2 made (7)	<b>48-74</b>	<b>-26</b>	
03:02				12 FULWILEY M 3pt FG , jump shot missed
03:00	14 MITCHELL A defensive rebound (2)			
02:48	1 BLAKES M 3pt FG , jump shot missed			
02:46				12 FULWILEY M defensive rebound (4)
02:43		<b>48-76</b>	<b>-28</b>	12 FULWILEY M 2pt FG fast break in the paint, driving layup made (24)



Official Basketball Play by Play - 4th Period  
**South Carolina at Vanderbilt**  
 02/23/25 Memorial Gymnasium (Vanderbilt), Nashville  
 2024-25 Women's Basketball

**Game Time:** 2:00 PM  
**Game Duration:** 2:04  
**Attendance:** 7,805

**Officials:** Melissa Barlow, Fatou Cissoko-Stephens, Teresa Stuck

Game Time	Vandy	Score	Diff	SC
02:25	14 MITCHELL A foul drawn (3)			15 TAC A foul personal (2 - 4)
02:25				12 FULWILEY M substitution out
02:25				35 WALKER S substitution in
02:21	1 BLAKES M foul drawn (7)			15 TAC A foul shooting (3 - 5)
02:21				23 HALL B substitution in
02:21				15 TAC A substitution out
02:21	1 BLAKES M free throw 1 - 2 made (18)	<b>49-76</b>	<b>-27</b>	
02:21	1 BLAKES M free throw 2 - 2 made (19)	<b>50-76</b>	<b>-26</b>	
01:53				5 JOHNSON T 3pt FG , jump shot missed
01:50				30 DAUDA M offensive rebound (6)
01:38	14 MITCHELL A foul shooting (1 - 3)			23 HALL B foul drawn (2)
01:38	11 OLIVER J substitution out			
01:38	13 PISSOTT J substitution in			
01:38		<b>50-77</b>	<b>-27</b>	23 HALL B free throw 1 - 2 made (3)
01:38				23 HALL B free throw 2 - 2 missed
01:36	14 MITCHELL A defensive rebound (3)			
01:30	1 BLAKES M 3pt FG , jump shot missed			
01:28				30 DAUDA M defensive rebound (7)
01:14				Timeout 30 Sec
01:14	1 BLAKES M substitution out			
01:14	5 KAPINUS L substitution out			
01:14	2 BROWN J substitution in			
01:14	10 NWABA J substitution in			
01:14				23 HALL B substitution out
01:14				15 TAC A substitution in
01:08	2 BROWN J foul personal (1 - 4)			15 TAC A foul drawn (1)
01:07		<b>50-79</b>	<b>-29</b>	15 TAC A 2pt FG in the paint, jump shot made (2)
01:07				1 MCDANIEL M assist (2)
00:44	14 MITCHELL A foul drawn (4)			15 TAC A foul shooting (4 - 6)
00:44	14 MITCHELL A free throw 1 - 2 made (8)	<b>51-79</b>	<b>-28</b>	
00:44	14 MITCHELL A free throw 2 - 2 made (9)	<b>52-79</b>	<b>-27</b>	
00:32		<b>52-81</b>	<b>-29</b>	1 MCDANIEL M 2pt FG in the paint, driving layup made (4)
00:32	14 MITCHELL A foul shooting (2 - 5)			1 MCDANIEL M foul drawn (1)
00:32		<b>52-82</b>	<b>-30</b>	1 MCDANIEL M free throw 1 - 1 made (5)
00:14	4 GREENE M foul drawn (2)			35 WALKER S foul personal (1 - 7)
00:14	4 GREENE M free throw 1 - 2 made (1)	<b>53-82</b>	<b>-29</b>	
00:14	4 GREENE M free throw 2 - 2 made (2)	<b>54-82</b>	<b>-28</b>	
<b>END OF GAME</b>				
<b>Vandy 54-82 SC</b>				



Officials: Melissa Barlow, Fatou Cissoko-Stephens, Teresa Stuck

South Carolina - 26

NO.	Name	F	Min	FG			Rebounds			Fouls		TP	AS	TO	ST	Blocks		+/-
				M-A	M-A	M-A	OR	DR	TOT	PF	FD					BS	BA	
20	Sania Feagin	F	00:00	0-0	0-0	0-0	0	0	0	0	0	0	0	0	0	0	0	0
21	Chloe Kitts	F	06:24	2-2	0-0	0-1	2	1	3	1	1	4	2	0	0	0	0	9
0	Te-Hina Paopao	G	03:59	1-1	1-1	0-0	0	0	0	0	0	3	1	0	1	0	0	2
23	Bree Hall	G	07:31	0-2	0-2	1-2	0	0	0	0	1	1	0	0	1	0	0	8
25	Raven Johnson	G	06:24	2-3	0-0	0-0	0	1	1	0	0	4	1	0	1	0	0	9
8	Joyce Edwards		06:24	1-1	0-0	0-0	0	0	0	0	1	2	2	1	0	0	0	9
12	MiLaysia Fulwiley		03:36	3-4	1-2	0-0	0	1	1	1	0	7	0	0	1	0	0	7
1	Maddy McDaniel		03:36	1-1	0-0	1-1	0	0	0	0	1	3	1	0	0	0	0	0
5	Tessa Johnson		03:36	0-1	0-1	0-0	0	0	0	0	0	0	0	0	0	0	0	0
15	Adhel Tac		02:29	1-1	0-0	0-0	0	0	0	4	1	2	0	0	0	0	0	1
30	Maryam Dauda		03:36	0-0	0-0	0-0	1	1	2	0	0	0	0	0	0	0	0	0
35	Sakima Walker		02:25	0-0	0-0	0-0	0	0	0	1	0	0	0	0	0	0	0	0
Team							0	0	0		0		0					
<b>Totals</b>				11-16	2-6	2-4	3	4	7	7	5	26	7	1	4	0	0	9

Shooting By Period		
4 <sup>th</sup> FG%	11-16	68.8%
3PT%	2-6	33.3%
FT%	2-4	50%
GM FG%	11-16	68.8%
3PT%	2-6	33.3%
FT%	2-4	50.0%

Dead Ball Rebounds: 0, 0

Technical Fouls::NONE

Vanderbilt - 17

NO.	Name	F	Min	FG			Rebounds			Fouls		TP	AS	TO	ST	Blocks		+/-
				M-A	M-A	M-A	OR	DR	TOT	PF	FD					BS	BA	
10	Jane Nwaba	F	01:14	0-0	0-0	0-0	0	0	0	0	0	0	0	0	0	0	0	-1
12	Khamil Pierre	F	02:42	1-2	0-0	0-0	0	2	2	1	0	2	0	1	0	0	0	-4
5	Leilani Kapinus	G	08:46	0-1	0-0	0-0	1	0	1	0	1	0	1	0	0	0	0	-8
11	Jordyn Oliver	G	08:22	1-1	0-0	0-0	0	0	0	0	0	2	1	0	0	0	0	-7
23	Iyana Moore	G	04:50	0-1	0-1	0-0	1	0	1	1	0	0	0	0	0	0	0	-6
1	Mikayla Blakes		06:38	0-2	0-2	2-2	0	0	0	0	1	2	0	1	0	0	0	-5
4	Madison Greene		07:18	0-1	0-1	2-2	0	0	0	0	1	2	0	1	0	0	0	-6
14	Aiyana Mitchell		07:18	2-2	0-0	5-5	0	2	2	2	4	9	1	1	0	0	0	-5
13	Justine Pissott		01:38	0-0	0-0	0-0	0	0	0	0	0	0	0	0	0	0	0	-2
2	Jada Brown		01:14	0-0	0-0	0-0	0	0	0	1	0	0	0	0	0	0	0	-1
Team							0	0	0		0		0					
<b>Totals</b>				4-10	0-4	9-9	2	4	6	5	7	17	3	4	0	0	0	-9

Shooting By Period		
4 <sup>th</sup> FG%	4-10	40.0%
3PT%	0-4	0.0%
FT%	9-9	100%
GM FG%	4-10	40.0%
3PT%	0-4	0.0%
FT%	9-9	100.0%

Dead Ball Rebounds: 0, 0

Technical Fouls::NONE

	SC	Vandy
Biggest lead	30 (4 <sup>th</sup> 0:32)	0 (1 <sup>st</sup> 10:00)
Best Scoring Run	7(4 <sup>th</sup> 8:17)	3(4 <sup>th</sup> 7:52)
Lead Changes	0	
Times Tied	0	
Time with Lead	09:34	00:00

	SC	Vandy
Points from		
Turnovers	8	0
Paint	18	6
Second Chance	3	2
Fast Breaks	8	0
Bench	14	13

	Period by Period Scoring				
	1st	2nd	3rd	4th	TOT
SC	24	11	21	26	82
Vandy	11	14	12	17	54



Officials: Melissa Barlow, Fatou Cissoko-Stephens, Teresa Stuck

South Carolina - 47

NO.	Name	F	Min	FG			Rebounds			Fouls		TP	AS	TO	ST	Blocks		+/-
				M-A	M-A	M-A	OR	DR	TOT	PF	FD					BS	BA	
20	Sania Feagin	F	06:07	0-0	0-0	0-0	0	1	1	1	0	0	0	1	0	0	0	-1
21	Chloe Kitts	F	12:02	2-3	0-0	0-1	2	2	4	2	2	4	2	0	1	0	0	14
0	Te-Hina Paopao	G	11:12	1-3	1-2	1-2	0	0	0	0	1	4	2	0	1	0	0	13
23	Bree Hall	G	15:55	0-2	0-2	1-2	0	1	1	0	1	1	0	0	1	1	0	12
25	Raven Johnson	G	10:49	2-3	0-0	0-0	0	2	2	0	0	4	1	1	1	1	0	13
8	Joyce Edwards		12:37	4-4	0-0	5-5	2	1	3	2	5	13	2	1	2	1	0	22
12	MiLaysia Fulwiley		06:24	4-7	1-2	0-0	1	1	2	2	0	9	0	0	1	0	0	12
1	Maddy McDaniel		07:59	2-2	0-0	1-1	0	0	0	0	1	5	2	1	1	0	0	3
5	Tessa Johnson		06:23	1-2	1-2	2-4	0	0	0	1	2	5	0	1	0	0	0	0
30	Maryam Dauda		05:38	0-0	0-0	0-0	1	2	3	0	0	0	0	0	0	0	0	1
15	Adhel Tac		02:29	1-1	0-0	0-0	0	0	0	4	1	2	0	0	0	0	0	1
35	Sakima Walker		02:25	0-0	0-0	0-0	0	0	0	1	0	0	0	0	0	0	0	0
Team							0	0	0			0						
<b>Totals</b>				17-27	3-8	10-15	6	10	16	13	13	47	9	5	8	3	0	18

Shooting By Period		
3 <sup>rd</sup> FG%	6-11	54.5%
3PT%	1-2	50.0%
FT%	8-11	72.7%
4 <sup>th</sup> FG%	11-16	68.8%
3PT%	2-6	33.3%
FT%	2-4	50%
GM FG%	17-27	63.0%
3PT%	3-8	37.5%
FT%	10-15	66.7%

Dead Ball Rebounds: 2, 0

Technical Fouls::NONE

Vanderbilt - 29

NO.	Name	F	Min	FG			Rebounds			Fouls		TP	AS	TO	ST	Blocks		+/-
				M-A	M-A	M-A	OR	DR	TOT	PF	FD					BS	BA	
10	Jane Nwaba	F	03:20	0-0	0-0	0-0	0	1	1	1	0	0	0	0	0	0	0	3
12	Khamil Pierre	F	12:42	3-8	0-0	1-2	2	2	4	2	1	7	0	2	0	0	2	-13
5	Leilani Kapinus	G	15:28	0-2	0-0	0-0	2	0	2	1	2	0	1	0	0	0	0	-19
11	Jordyn Oliver	G	14:24	1-1	0-0	0-0	1	0	1	2	0	2	1	1	1	0	0	-14
23	Iyana Moore	G	10:42	0-2	0-1	1-2	1	0	1	2	1	1	0	2	1	0	0	-13
4	Madison Greene		12:38	0-1	0-1	2-2	0	0	0	0	1	2	0	1	1	0	0	-10
13	Justine Pissott		03:26	0-1	0-1	0-0	0	0	0	0	1	0	0	0	0	0	0	-6
1	Mikayla Blakes		14:50	1-7	0-3	6-6	3	1	4	2	3	8	1	2	1	0	1	-10
14	Aiyana Mitchell		11:16	2-5	0-0	5-5	1	2	3	2	4	9	1	1	0	0	0	-7
2	Jada Brown		01:14	0-0	0-0	0-0	0	0	0	1	0	0	0	0	0	0	0	-1
Team							1	1	2			0						
<b>Totals</b>				7-27	0-6	15-17	11	7	18	13	13	29	4	9	4	0	3	-18

Shooting By Period		
3 <sup>rd</sup> FG%	3-17	17.6%
3PT%	0-2	0.0%
FT%	6-8	75%
4 <sup>th</sup> FG%	4-10	40.0%
3PT%	0-4	0.0%
FT%	9-9	100%
GM FG%	7-27	25.9%
3PT%	0-6	0.0%
FT%	15-17	88.2%

Dead Ball Rebounds: 1, 0

Technical Fouls::NONE

	SC	Vandy
Biggest lead	30 (4 <sup>th</sup> 0:32)	0 (1 <sup>st</sup> 10:00)
Best Scoring Run	10(3 <sup>rd</sup> 4:43)	5(3 <sup>rd</sup> 1:45)
Lead Changes	0	
Times Tied	0	
Time with Lead	19:48	00:00

	SC	Vandy
Points from		
Turnovers	17	3
Paint	28	10
Second Chance	8	7
Fast Breaks	15	0
Bench	34	19

	Period by Period Scoring				
	1st	2nd	3rd	4th	TOT
SC	24	11	21	26	82
Vandy	11	14	12	17	54

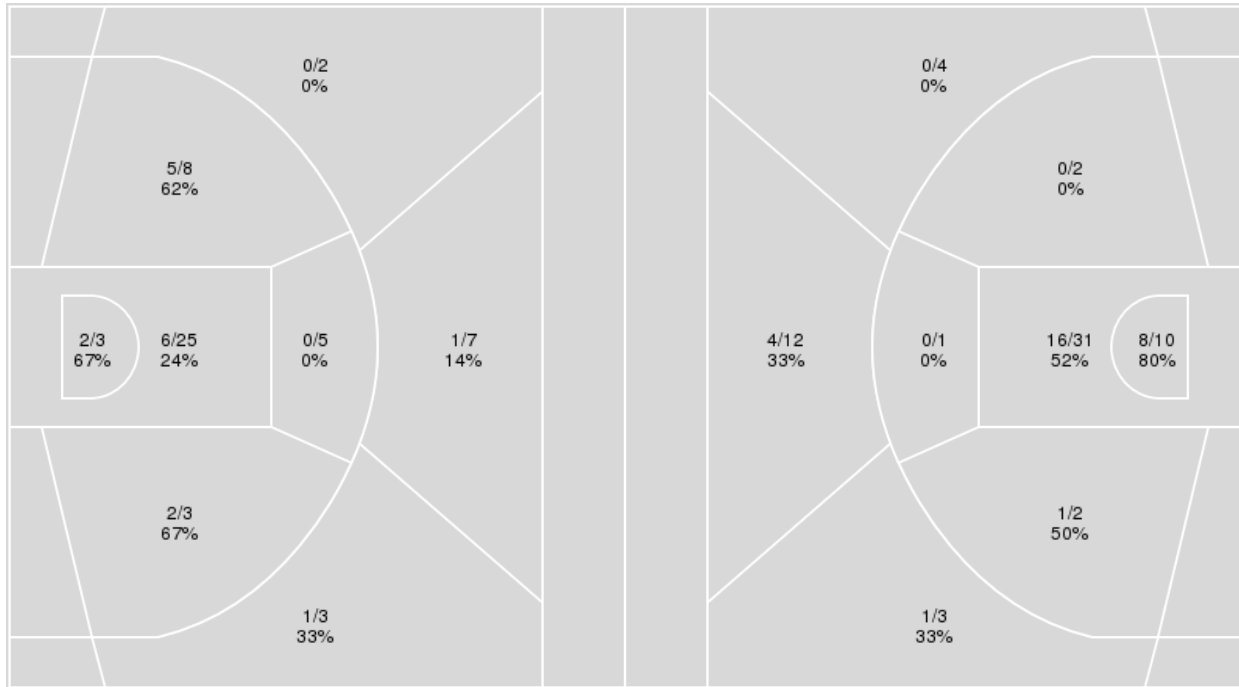


**Officials:** Melissa Barlow, Fatou Cissoko-Stephens, Teresa Stuck

{ Players => 1, 2, 4, 5, 10, 11, 12, 13, 14, 23, 24, 30, 35; } FG Types => { Players => All; } FG Types => All; Results => All;  
 All; Results => All;

**Vanderbilt**

**South Carolina**



Vanderbilt	M/A	%
Field Goals	17/56	30
2 Points	15/44	34
3 Points	2/12	17
Free Throws	18/25	72

South Carolina	M/A	%
Field Goals	30/65	46
2 Points	25/46	54
3 Points	5/19	26
Free Throws	17/27	63



**South Carolina at Vanderbilt**

02/23/25 Memorial Gymnasium (Vanderbilt), Nashville  
2024-25 Women's Basketball

Officials: Melissa Barlow, Fatou Cissoko-Stephens, Teresa Stuck

**South Carolina**

No	Name	Mins		Score		Points Diff		Points per Min		Assists		Rebounds		Steals		Turnovers	
		On	Off	On	Off	On	Off	On	Off	On	Off	On	Off	On	Off	On	Off
0	Te-Hina Paopao	26:56	13:04	49 - 30	33 - 24	19	9	1.82	2.53	10	6	36	11	9	4	10	3
1	Maddy McDaniel	07:59	32:01	19 - 16	63 - 38	3	25	2.38	1.97	2	14	6	41	1	12	2	11
5	Tessa Johnson	17:44	22:16	33 - 28	49 - 26	5	23	1.86	2.20	4	12	22	25	4	9	4	9
8	Joyce Edwards	28:33	11:27	60 - 34	22 - 20	26	2	2.10	1.92	12	4	37	10	12	1	9	4
12	MiLaysia Fulwiley	19:26	20:34	43 - 25	39 - 29	18	10	2.21	1.90	8	8	24	23	9	4	4	9
15	Adhel Tac	02:29	37:31	7 - 6	75 - 48	1	27	2.82	2.00	1	15	1	46	0	13	0	13
20	Sania Feagin	12:55	27:05	22 - 20	60 - 34	2	26	1.70	2.22	3	13	15	32	2	11	8	5
21	Chloe Kitts	19:53	20:07	43 - 22	39 - 32	21	7	2.16	1.94	11	5	21	26	8	5	6	7
23	Bree Hall	27:07	12:53	51 - 36	31 - 18	15	13	1.88	2.40	13	3	31	16	8	5	11	2
25	Raven Johnson	19:30	20:30	46 - 23	36 - 31	23	5	2.36	1.76	10	6	22	25	8	5	8	5
30	Maryam Dauda	11:51	28:09	22 - 18	60 - 36	4	24	1.86	2.13	4	12	14	33	2	11	2	11
35	Sakima Walker	05:37	34:23	15 - 12	67 - 42	3	25	2.67	1.95	2	14	6	41	2	11	1	12

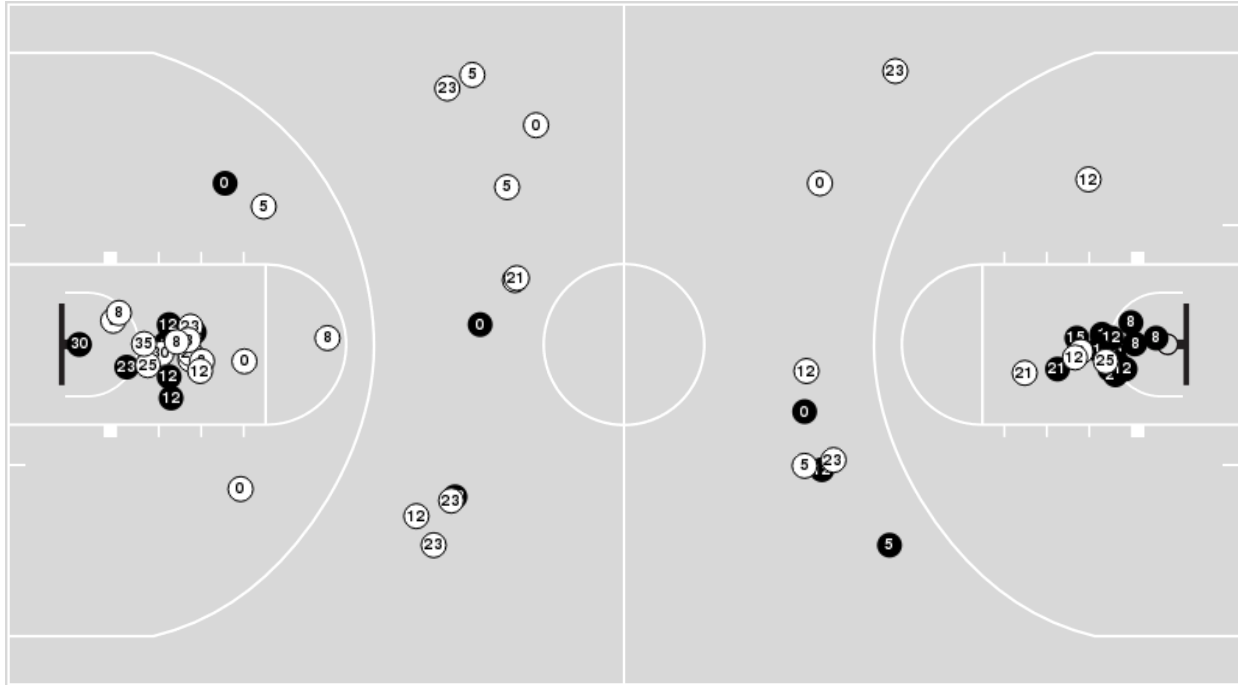
**Vanderbilt**

No	Name	Mins		Score		Points Diff		Points per Min		Assists		Rebounds		Steals		Turnovers	
		On	Off	On	Off	On	Off	On	Off	On	Off	On	Off	On	Off	On	Off
1	Mikayla Blakes	31:19	08:41	42 - 57	12 - 25	-15	-13	1.34	1.38	8	2	31	4	7	1	13	4
2	Jada Brown	01:14	38:46	4 - 5	50 - 77	-1	-27	3.24	1.29	0	10	0	35	0	8	0	17
4	Madison Greene	27:05	12:55	41 - 55	13 - 27	-14	-14	1.51	1.01	6	4	23	12	5	3	10	7
5	Leilani Kapinus	32:40	07:20	42 - 71	12 - 11	-29	1	1.29	1.64	8	2	30	5	7	1	15	2
10	Jane Nwaba	05:27	34:33	8 - 9	46 - 73	-1	-27	1.47	1.33	1	9	4	31	2	6	1	16
11	Jordyn Oliver	32:00	08:00	43 - 59	11 - 23	-16	-12	1.34	1.38	10	0	26	9	6	2	11	6
12	Khamil Pierre	31:13	08:47	39 - 60	15 - 22	-21	-7	1.25	1.71	8	2	31	4	8	0	15	2
13	Justine Pissott	03:26	36:34	4 - 10	50 - 72	-6	-22	1.17	1.37	0	10	3	32	0	8	1	16
14	Aiyana Mitchell	14:16	25:44	22 - 35	32 - 47	-13	-15	1.54	1.24	2	8	12	23	2	6	7	10
23	Iyana Moore	21:20	18:40	25 - 49	29 - 33	-24	-4	1.17	1.55	7	3	15	20	3	5	12	5

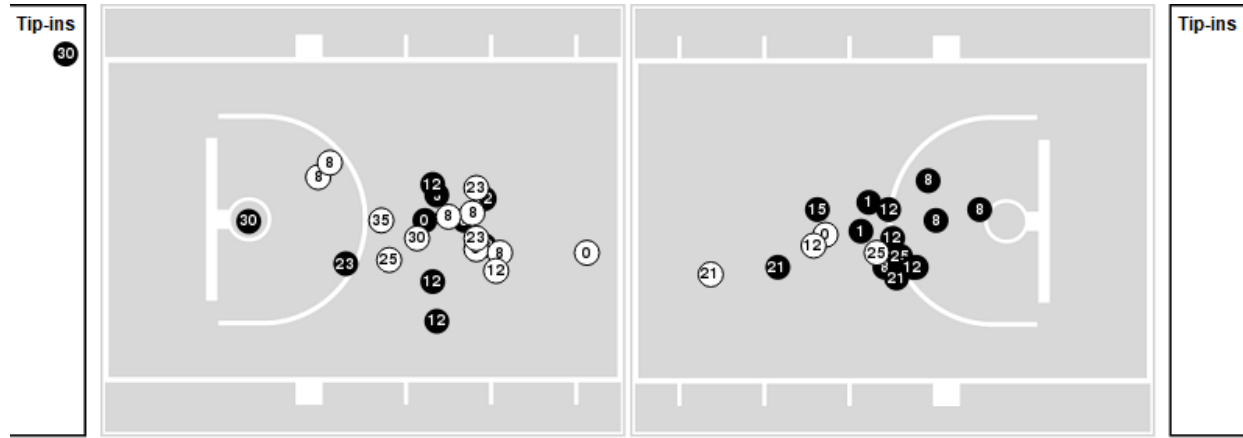


Players => AllFG Types=>AllResults=>All  
**South Carolina**

**All Field Goals**



**Blow Up Chart**



● Made    ○ Missed    N - Player Number

South Carolina	M/A	%
Field Goals	30/65	46
2 Points	25/46	54
3 Points	5/19	26
Free Throws	17/27	63

South Carolina	M/A	%
Points in the Paint	48 (24 / 41)	59
Fast Break Points	19 (10/12)	83
Second Chance Points	17 (11/26)	42
Effective FG%	50	



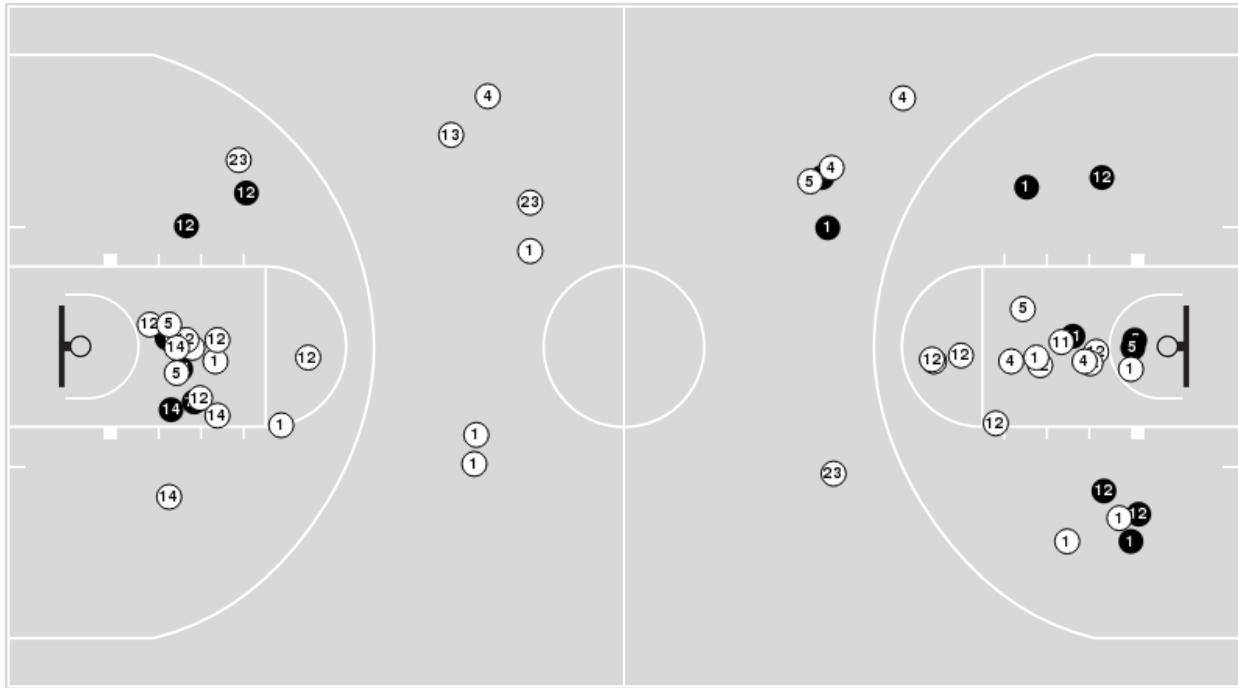


**Officials:** Melissa Barlow, Fatou Cissoko-Stephens, Teresa Stuck

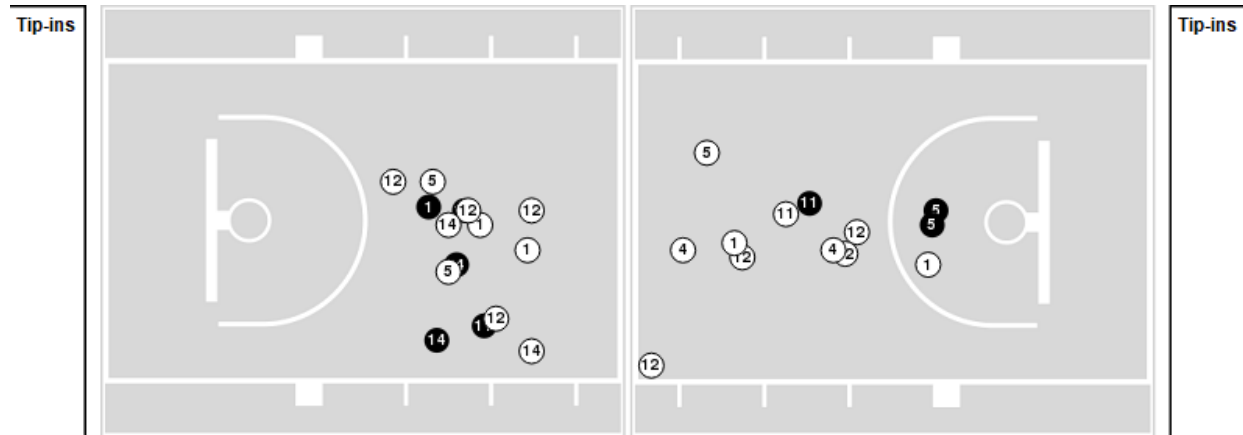
Players => 1, 2, 4, 5, 10, 11, 12, 13, 14, 23, 24, 30, 35FG Types=>AllResults=>All

### Vanderbilt

#### All Field Goals



#### Blow Up Chart



● Made ○ Missed N - Player Number

Vanderbilt	M/A	%
Field Goals	17/56	30
2 Points	15/44	34
3 Points	2/12	17
Free Throws	18/25	72

Vanderbilt	M/A	%
Points in the Paint	16 (8 / 28)	29
Fast Break Points	0 (0/0)	0
Second Chance Points	12 (7/13)	54
Effective FG%	32	



**Officials:** Melissa Barlow, Fatou Cissoko-Stephens, Teresa Stuck

**South Carolina**

Lineup	Quarter On	Time On	Quarter Off	Time Off	Time on Court	Score	Score Diff	Reb	Stl	Tov	Ass	PPP
0- Paopao T/20- Feagin S/21- Kitts C/23- Hall B/25- Johnson R/	1	10:00	1	05:56	04:04	9-3	6	6	0	2	2	1.1421
0- Paopao T/8- Edwards J/12- Fulwiley M/21- Kitts C/23- Hall B/	1	05:56	1	05:32	00:24	0-2	-2	0	0	1	0	0.0000
0- Paopao T/8- Edwards J/12- Fulwiley M/23- Hall B/30- Dauda M/	1	05:32	1	04:27	01:05	2-0	2	4	0	0	1	2.0000
0- Paopao T/5- Johnson T/8- Edwards J/12- Fulwiley M/30- Dauda M/	1	04:27	1	02:17	02:10	4-2	2	3	2	0	0	1.0309
5- Johnson T/8- Edwards J/12- Fulwiley M/25- Johnson R/30- Dauda M/	1	02:17	1	02:17	00:00	0-0	0	0	0	0	0	0.0000
5- Johnson T/8- Edwards J/12- Fulwiley M/25- Johnson R/35- Walker S/	1	02:17	2	10:00	02:17	9-4	5	1	2	1	1	1.8443
5- Johnson T/8- Edwards J/23- Hall B/25- Johnson R/35- Walker S/	2	10:00	2	09:05	00:55	0-2	-2	3	0	0	0	0.0000
5- Johnson T/8- Edwards J/20- Feagin S/23- Hall B/25- Johnson R/	2	09:05	2	08:01	01:04	2-1	1	2	0	0	0	2.0000
0- Paopao T/8- Edwards J/20- Feagin S/23- Hall B/25- Johnson R/	2	08:01	2	07:40	00:21	0-0	0	1	0	2	0	0.0000
0- Paopao T/8- Edwards J/12- Fulwiley M/20- Feagin S/23- Hall B/	2	07:40	2	06:49	00:51	0-2	-2	1	0	1	0	0.0000
0- Paopao T/8- Edwards J/12- Fulwiley M/21- Kitts C/23- Hall B/	2	06:49	2	04:55	01:54	4-3	1	1	1	0	2	1.0000
0- Paopao T/5- Johnson T/8- Edwards J/12- Fulwiley M/21- Kitts C/	2	04:55	2	03:26	01:29	2-0	2	4	0	0	0	1.0000
0- Paopao T/5- Johnson T/8- Edwards J/12- Fulwiley M/20- Feagin S/	2	03:26	2	02:58	00:28	0-2	-2	2	0	0	0	0.0000
0- Paopao T/5- Johnson T/8- Edwards J/12- Fulwiley M/30- Dauda M/	2	02:58	2	00:33	02:24	3-3	0	3	0	1	1	0.6303
0- Paopao T/5- Johnson T/8- Edwards J/23- Hall B/30- Dauda M/	2	00:33	3	10:00	00:33	0-1	-1	0	0	0	0	0.0000
0- Paopao T/20- Feagin S/21- Kitts C/23- Hall B/25- Johnson R/	3	10:00	3	08:16	01:44	0-4	-4	0	1	1	0	0.0000
0- Paopao T/8- Edwards J/21- Kitts C/23- Hall B/25- Johnson R/	3	08:16	3	05:35	02:41	8-0	8	5	1	1	1	1.5385
0- Paopao T/8- Edwards J/12- Fulwiley M/21- Kitts C/23- Hall B/	3	05:35	3	04:23	01:12	2-0	2	1	1	0	0	2.0000
0- Paopao T/1- McDaniel M/8- Edwards J/12- Fulwiley M/20- Feagin S/	3	04:23	3	02:47	01:36	6-1	5	2	1	0	0	2.0833
1- McDaniel M/8- Edwards J/12- Fulwiley M/20- Feagin S/23- Hall B/	3	02:47	3	02:47	00:00	0-2	-2	0	0	0	0	0.0000
1- McDaniel M/5- Johnson T/8- Edwards J/20- Feagin S/23- Hall B/	3	02:47	3	02:03	00:44	0-0	0	0	0	1	0	0.0000
1- McDaniel M/5- Johnson T/20- Feagin S/21- Kitts C/23- Hall B/	3	02:03	3	02:02	00:01	0-1	-1	0	0	0	0	0.0000
1- McDaniel M/5- Johnson T/20- Feagin S/23- Hall B/30- Dauda M/	3	02:02	4	10:00	02:02	5-4	1	1	0	1	1	1.3298
0- Paopao T/8- Edwards J/21- Kitts C/23- Hall B/25- Johnson R/	4	10:00	4	06:01	03:59	9-7	2	3	2	1	3	1.6544
8- Edwards J/12- Fulwiley M/21- Kitts C/23- Hall B/25- Johnson R/	4	06:01	4	03:36	02:25	9-2	7	1	2	0	3	1.8000
1- McDaniel M/5- Johnson T/12- Fulwiley M/15- Tac A/30- Dauda M/	4	03:36	4	02:25	01:11	2-2	0	1	0	0	0	1.0000
1- McDaniel M/5- Johnson T/15- Tac A/30- Dauda M/35- Walker S/	4	02:25	4	02:21	00:04	0-0	0	0	0	0	0	0.0000
1- McDaniel M/5- Johnson T/23- Hall B/30- Dauda M/35- Walker S/	4	02:21	4	01:14	01:07	1-2	-1	2	0	0	0	1.1364
1- McDaniel M/5- Johnson T/15- Tac A/30- Dauda M/35- Walker S/	4	01:14	4	00:00	01:14	5-4	1	0	0	0	1	2.0492



Official Basketball Rotations Summary - Final  
**South Carolina at Vanderbilt**  
 02/23/25 Memorial Gymnasium (Vanderbilt), Nashville  
 2024-25 Women's Basketball

**Game Time:** 2:00 PM  
**Game Duration:** 2:04  
**Attendance:** 7,805

**Officials:** Melissa Barlow, Fatou Cissoko-Stephens, Teresa Stuck

**Vanderbilt**

Lineup	Quarter On	Time On	Quarter Off	Time Off	Time on Court	Score	Score Diff	Reb	Stl	Tov	Ass	PPP
5- Kapinus L/ 10- Nwaba J/ 11- Oliver J/ 12- Pierre K/ 23- Moore I/	1	10:00	1	07:53	02:07	0-4	-4	1	1	0	0	0.0000
1- Blakes M/ 5- Kapinus L/ 11- Oliver J/ 12- Pierre K/ 23- Moore I/	1	07:53	1	04:27	03:26	5-7	-2	3	0	1	2	0.8333
1- Blakes M/ 4- Greene M/ 11- Oliver J/ 12- Pierre K/ 23- Moore I/	1	04:27	1	03:36	00:51	2-2	0	0	0	0	0	2.0000
1- Blakes M/ 4- Greene M/ 5- Kapinus L/ 12- Pierre K/ 14- Mitchell A/	1	03:36	1	02:17	01:19	0-2	-2	2	0	2	0	0.0000
4- Greene M/ 5- Kapinus L/ 12- Pierre K/ 14- Mitchell A/ 23- Moore I/	1	02:17	1	02:05	00:12	0-2	-2	0	0	1	0	0.0000
1- Blakes M/ 4- Greene M/ 5- Kapinus L/ 12- Pierre K/ 23- Moore I/	1	02:05	1	01:12	00:53	0-4	-4	0	0	1	0	0.0000
4- Greene M/ 5- Kapinus L/ 11- Oliver J/ 12- Pierre K/ 23- Moore I/	1	01:12	2	10:00	01:12	4-3	1	0	0	0	1	2.0000
1- Blakes M/ 4- Greene M/ 5- Kapinus L/ 11- Oliver J/ 12- Pierre K/	2	10:00	2	04:55	05:05	8-6	2	5	2	2	2	0.8097
1- Blakes M/ 4- Greene M/ 11- Oliver J/ 14- Mitchell A/ 23- Moore I/	2	04:55	2	03:26	01:29	0-2	-2	1	0	0	0	0.0000
1- Blakes M/ 4- Greene M/ 11- Oliver J/ 12- Pierre K/ 23- Moore I/	2	03:26	2	02:58	00:28	2-0	2	0	0	0	1	2.0000
1- Blakes M/ 4- Greene M/ 5- Kapinus L/ 11- Oliver J/ 12- Pierre K/	2	02:58	3	10:00	02:58	4-3	1	5	1	1	0	0.7092
1- Blakes M/ 10- Nwaba J/ 11- Oliver J/ 12- Pierre K/ 23- Moore I/	3	10:00	3	07:54	02:06	4-0	4	3	1	1	1	1.0000
1- Blakes M/ 5- Kapinus L/ 11- Oliver J/ 12- Pierre K/ 23- Moore I/	3	07:54	3	06:56	00:58	0-4	-4	0	1	1	0	0.0000
1- Blakes M/ 4- Greene M/ 5- Kapinus L/ 11- Oliver J/ 12- Pierre K/	3	06:56	3	06:11	00:45	0-2	-2	1	0	0	0	0.0000
4- Greene M/ 5- Kapinus L/ 11- Oliver J/ 12- Pierre K/ 13- Pissott J/	3	06:11	3	05:35	00:36	0-2	-2	1	0	0	0	0.0000
4- Greene M/ 11- Oliver J/ 12- Pierre K/ 13- Pissott J/ 23- Moore I/	3	05:35	3	04:23	01:12	0-2	-2	1	0	1	0	0.0000
1- Blakes M/ 5- Kapinus L/ 11- Oliver J/ 12- Pierre K/ 23- Moore I/	3	04:23	3	03:58	00:25	1-2	-1	0	0	0	0	1.1364
1- Blakes M/ 5- Kapinus L/ 12- Pierre K/ 14- Mitchell A/ 23- Moore I/	3	03:58	3	02:47	01:11	0-4	-4	2	0	2	0	0.0000
1- Blakes M/ 4- Greene M/ 5- Kapinus L/ 12- Pierre K/ 14- Mitchell A/	3	02:47	4	10:00	02:47	7-5	2	4	2	0	0	1.5086
4- Greene M/ 5- Kapinus L/ 11- Oliver J/ 14- Mitchell A/ 23- Moore I/	4	10:00	4	07:52	02:08	4-7	-3	1	0	2	1	1.0000
1- Blakes M/ 5- Kapinus L/ 11- Oliver J/ 14- Mitchell A/ 23- Moore I/	4	07:52	4	07:52	00:00	1-0	1	0	0	0	0	2.2727
1- Blakes M/ 5- Kapinus L/ 11- Oliver J/ 12- Pierre K/ 23- Moore I/	4	07:52	4	05:10	02:42	2-6	-4	3	0	2	1	0.5000
1- Blakes M/ 4- Greene M/ 5- Kapinus L/ 11- Oliver J/ 14- Mitchell A/	4	05:10	4	01:38	03:32	6-7	-1	1	0	0	1	1.2605
1- Blakes M/ 4- Greene M/ 5- Kapinus L/ 13- Pissott J/ 14- Mitchell A/	4	01:38	4	01:14	00:24	0-1	-1	1	0	0	0	0.0000
2- Brown J/ 4- Greene M/ 10- Nwaba J/ 13- Pissott J/ 14- Mitchell A/	4	01:14	4	00:00	01:14	4-5	-1	0	0	0	0	2.2727



**Officials:** Melissa Barlow, Fatou Cissoko-Stephens, Teresa Stuck

**South Carolina**

Lineup	Time	Score	Score Diff	Pts/Min	Reb	Stl	Tov	Ass	PPP
0- Paopao T/ 8- Edwards J/ 21- Kitts C/ 23- Hall B/ 25- Johnson R/	06:40	17-7	10	2.5500	8	3	2	4	1.5977
0- Paopao T/ 20- Feagin S/ 21- Kitts C/ 23- Hall B/ 25- Johnson R/	05:48	9-7	2	1.5517	6	1	3	2	0.8272
0- Paopao T/ 5- Johnson T/ 8- Edwards J/ 12- Fulwiley M/ 30- Dauda M/	04:34	7-5	2	1.5306	6	2	1	1	0.8102
0- Paopao T/ 8- Edwards J/ 12- Fulwiley M/ 21- Kitts C/ 23- Hall B/	03:30	6-5	1	1.7143	2	2	1	2	1.0000
8- Edwards J/ 12- Fulwiley M/ 21- Kitts C/ 23- Hall B/ 25- Johnson R/	02:25	9-2	7	3.7241	1	2	0	3	1.8000
5- Johnson T/ 8- Edwards J/ 12- Fulwiley M/ 25- Johnson R/ 35- Walker S/	02:17	9-4	5	3.9416	1	2	1	1	1.8443
1- McDaniel M/ 5- Johnson T/ 20- Feagin S/ 23- Hall B/ 30- Dauda M/	02:02	5-4	1	2.4590	1	0	1	1	1.3298
0- Paopao T/ 1- McDaniel M/ 8- Edwards J/ 12- Fulwiley M/ 20- Feagin S/	01:36	6-1	5	3.7500	2	1	0	0	2.0833
0- Paopao T/ 5- Johnson T/ 8- Edwards J/ 12- Fulwiley M/ 21- Kitts C/	01:29	2-0	2	1.3483	4	0	0	0	1.0000
1- McDaniel M/ 5- Johnson T/ 15- Tac A/ 30- Dauda M/ 35- Walker S/	01:18	5-4	1	3.8462	0	0	0	1	2.0492
1- McDaniel M/ 5- Johnson T/ 12- Fulwiley M/ 15- Tac A/ 30- Dauda M/	01:11	2-2	0	1.6901	1	0	0	0	1.0000
1- McDaniel M/ 5- Johnson T/ 23- Hall B/ 30- Dauda M/ 35- Walker S/	01:07	1-2	-1	0.8955	2	0	0	0	1.1364
0- Paopao T/ 8- Edwards J/ 12- Fulwiley M/ 23- Hall B/ 30- Dauda M/	01:05	2-0	2	1.8462	4	0	0	1	2.0000
5- Johnson T/ 8- Edwards J/ 20- Feagin S/ 23- Hall B/ 25- Johnson R/	01:04	2-1	1	1.8750	2	0	0	0	2.0000
5- Johnson T/ 8- Edwards J/ 23- Hall B/ 25- Johnson R/ 35- Walker S/	00:55	0-2	-2	0.0000	3	0	0	0	0.0000
0- Paopao T/ 8- Edwards J/ 12- Fulwiley M/ 20- Feagin S/ 23- Hall B/	00:51	0-2	-2	0.0000	1	0	1	0	0.0000
1- McDaniel M/ 5- Johnson T/ 8- Edwards J/ 20- Feagin S/ 23- Hall B/	00:44	0-0	0	0.0000	0	0	1	0	0.0000
0- Paopao T/ 5- Johnson T/ 8- Edwards J/ 23- Hall B/ 30- Dauda M/	00:33	0-1	-1	0.0000	0	0	0	0	0.0000
0- Paopao T/ 5- Johnson T/ 8- Edwards J/ 12- Fulwiley M/ 20- Feagin S/	00:28	0-2	-2	0.0000	2	0	0	0	0.0000
0- Paopao T/ 8- Edwards J/ 20- Feagin S/ 23- Hall B/ 25- Johnson R/	00:21	0-0	0	0.0000	1	0	2	0	0.0000
1- McDaniel M/ 5- Johnson T/ 20- Feagin S/ 21- Kitts C/ 23- Hall B/	00:01	0-1	-1	0.0000	0	0	0	0	0.0000
5- Johnson T/ 8- Edwards J/ 12- Fulwiley M/ 25- Johnson R/ 30- Dauda M/	00:00	0-0	0	NaN	0	0	0	0	0.0000
1- McDaniel M/ 8- Edwards J/ 12- Fulwiley M/ 20- Feagin S/ 23- Hall B/	00:00	0-2	-2	NaN	0	0	0	0	0.0000



**Officials:** Melissa Barlow, Fatou Cissoko-Stephens, Teresa Stuck

**Vanderbilt**

Lineup	Time	Score	Score Diff	Pts/Min	Reb	Stl	Tov	Ass	PPP
1- Blakes M/ 4- Greene M/ 5- Kapinus L/ 11- Oliver J/ 12- Pierre K/	08:48	12-11	1	1.3636	11	3	3	2	0.7264
1- Blakes M/ 5- Kapinus L/ 11- Oliver J/ 12- Pierre K/ 23- Moore I/	07:31	8-19	-11	1.0643	6	1	4	3	0.6211
1- Blakes M/ 4- Greene M/ 5- Kapinus L/ 12- Pierre K/ 14- Mitchell A/	04:06	7-7	0	1.7073	6	2	2	0	0.9162
1- Blakes M/ 4- Greene M/ 5- Kapinus L/ 11- Oliver J/ 14- Mitchell A/	03:32	6-7	-1	1.6981	1	0	0	1	1.2605
4- Greene M/ 5- Kapinus L/ 11- Oliver J/ 14- Mitchell A/ 23- Moore I/	02:08	4-7	-3	1.8750	1	0	2	1	1.0000
5- Kapinus L/ 10- Nwaba J/ 11- Oliver J/ 12- Pierre K/ 23- Moore I/	02:07	0-4	-4	0.0000	1	1	0	0	0.0000
1- Blakes M/ 10- Nwaba J/ 11- Oliver J/ 12- Pierre K/ 23- Moore I/	02:06	4-0	4	1.9048	3	1	1	1	1.0000
1- Blakes M/ 4- Greene M/ 11- Oliver J/ 14- Mitchell A/ 23- Moore I/	01:29	0-2	-2	0.0000	1	0	0	0	0.0000
1- Blakes M/ 4- Greene M/ 11- Oliver J/ 12- Pierre K/ 23- Moore I/	01:19	4-2	2	3.0380	0	0	0	1	2.0000
2- Brown J/ 4- Greene M/ 10- Nwaba J/ 13- Pissott J/ 14- Mitchell A/	01:14	4-5	-1	3.2432	0	0	0	0	2.2727
4- Greene M/ 5- Kapinus L/ 11- Oliver J/ 12- Pierre K/ 23- Moore I/	01:12	4-3	1	3.3333	0	0	0	1	2.0000
4- Greene M/ 11- Oliver J/ 12- Pierre K/ 13- Pissott J/ 23- Moore I/	01:12	0-2	-2	0.0000	1	0	1	0	0.0000
1- Blakes M/ 5- Kapinus L/ 12- Pierre K/ 14- Mitchell A/ 23- Moore I/	01:11	0-4	-4	0.0000	2	0	2	0	0.0000
1- Blakes M/ 4- Greene M/ 5- Kapinus L/ 12- Pierre K/ 23- Moore I/	00:53	0-4	-4	0.0000	0	0	1	0	0.0000
4- Greene M/ 5- Kapinus L/ 11- Oliver J/ 12- Pierre K/ 13- Pissott J/	00:36	0-2	-2	0.0000	1	0	0	0	0.0000
1- Blakes M/ 4- Greene M/ 5- Kapinus L/ 13- Pissott J/ 14- Mitchell A/	00:24	0-1	-1	0.0000	1	0	0	0	0.0000
4- Greene M/ 5- Kapinus L/ 12- Pierre K/ 14- Mitchell A/ 23- Moore I/	00:12	0-2	-2	0.0000	0	0	1	0	0.0000
1- Blakes M/ 5- Kapinus L/ 11- Oliver J/ 14- Mitchell A/ 23- Moore I/	00:00	1-0	1	∞	0	0	0	0	2.2727