

# UNIVERSITY OF EVANSVILLE WOMEN'S BASKETBALL

SID: Liz Holbrook

Email: eh340@evansville.edu

Phone: (574) 903-3193

Twitter: @UEAthleticsWBB, #ForTheAces



NASHVILLE

2 PM

MEMORIAL GYMNASIUM

SEC

## 2024-25 GAME NOTES

### GAME 9 TODAY'S GAME VANDERBILT



PURPLE ACES

<b>3-5</b> OVERALL	<b>0-0</b> MVC	<b>295</b> NET
<b>1-4</b> LAST 5	<b>3-0</b> HOME	<b>W, 87-74</b> LAST GAME

VS



COMMODORES

<b>9-1</b> OVERALL	<b>0-0</b> SEC	<b>8</b> NET
<b>4-1</b> LAST 5	<b>2-0</b> ROAD	<b>W, 88-70</b> LAST GAME

#### SERIES AT A GLANCE

**All-Time Series:** Vanderbilt leads 0-6

**First Meeting:** Dec. 1 1986, Evansville, Ind. L, 68-62

**Last Meeting:** Jan. 7 1994, Nashville L, 121-64

**Last UE Win:** None

**Last VANDY Win:** Jan. 7 1994, Nashville L, 121-64

**Streak:** Vandy W6

**Largest UE Win:** None

**Largest LIP Win:** 121-64, Jan. 7, 1994, Nashville

#### LAST 6 GAMES VS. VANDERBILT (0-6)

DATE	H/A/N	RESULT	DATE	H/A/N	RESULT
12-1-86	H	L, 68-62	1-7-94	A	L, 121-64
2-9-88	A	L, 91-62			
2-1-89	H	L, 74-52			
11-30-89	A	L, 111-66			
12-12-90	A	L, 80-64			

#### 2024-25 SCHEDULE & RESULTS

Date	Opponent	Time/Result
Nov. 5	at IU Indy	L, 101-76
Nov. 10	Wright State	W, 65-63
Nov. 14	SEMO	W, 70-55
Nov. 18	at Lindenwood	L, 71-69 (OT)
Nov. 23	at Lipscomb	L, 86-79
Nov. 29	vs. Nicholls \$	L, 63-50
Nov. 30	vs. Delaware \$	L, 65-54
Dec. 8	SIUE	W, 87-74
Dec. 14	at Vanderbilt	2:00 p.m.
Dec. 17	IU Columbus^	11:00 a.m.
Dec. 21	at Loyola	2:00 p.m.
Dec. 29	Drake**	12:00 p.m.
Jan. 2	at Bradley*	6:00 p.m.
Jan. 4	at Illinois State*	4:00 p.m.
Jan. 12	at Indiana State*	1:00 p.m. CT
Jan. 17	Missouri State*	6:00 p.m.
Jan. 19	Southern Illinois*	1:00 p.m.
Jan. 24	at Belmont*	6:30 p.m.
Jan. 26	at Murray State*	2:00 p.m.
Jan. 30	UIC*	6:00 p.m.
Feb. 1	Valparaiso*	5:00 p.m.
Feb. 7	at Southern Illinois*	6:00 p.m.
Feb. 9	at Missouri State*	2:00 p.m.
Feb. 13	Bradley*	6:00 p.m.
Feb. 15	Illinois State*	2:00 p.m.
Feb. 21	at Valparaiso*	6:00 p.m.
Feb. 23	at UIC*	2:00 p.m.
Feb. 27	at UNI	6:00 p.m.
March 1	at Indiana State*	5:00 p.m.
March 6	Murray State*	6:00 p.m.
March 8	Belmont*	2:00 p.m.
March 13-16	MVC Tournament	2:30 p.m.

\$ Big Easy New Orleans Classic  
^ at the Ford Center

#### We are UE

There are several ways to reference the University of Evansville. Generally, the first reference should always be "University of Evansville" or "Purple Aces". Later references to our team may be "Aces" as well as just using the word "Evansville".

Our school abbreviation is "UE". Under no circumstances is it acceptable to use "EU".

The "UE" logo below is our primary and the "Aces" is our secondary. Both are acceptable to use at any time.



#### GAMEDAY NOTES

• The Purple Aces got back in the win column in a big way against SIUE on Sunday. UE had the program's first game with three 20+ point scorers since at least the 2006-07 season in the double-digit win over the Cougars.

• Evansville continues its dominance at the free throw line leading the Missouri Valley Conference in all three FT categories. Nationally the Aces are 6th in free throws made per game (18.5), 10th in free throw attempts per game (23.5), and 14th in free throw percentage (78.7%).

• Saturday's game will be UE's only chance to play a Power Four opponent in the 2024-25 regular season. It will be Evansville's first visit to Memorial Hall in 30 years as the program last faced Vanderbilt in 1994.

• Saturday's game will feature a marquee freshman match up with the two most consistent scoring newcomers. Vanderbilt guard Mikayla Blakes currently leads all freshman in Division I basketball with 20.2 points per game. UE guard Camryn Runner follows right behind Blakes among freshman with 19.6 points per game.

• With a 21 point & rebound leading performance on Sunday, Runner earned her third MVC Freshman of the Week honor. Runner is one of three Aces to have earned 3 weekly honors in their first season at UE. She is only two weekly honors away from tying the most by an Evansville player in a season.

#### TODAY'S OPPONENT



#### Stat Leaders

Scoring	G-GS	PPG
Khamil Pierre	9-9	20.8
Mikayla Blakes	10-10	20.2

Rebounding	G-GS	RPG
Khamil Pierre	9-9	11.1
Jordyn Oliver	10-10	5.7

Assists	G-GS	APG
Mikayla Blakes	10-10	3.8
Jordyn Oliver	10-10	3.1

Blocks	G-GS	BPG
Leillani Kapinus	9-0	0.77
Jane Nwaba	10-8	0.70

Steals	G-GS	SPG
Khamil Pierre	9-9	3.6
Mikayla Blakes	10-10	2.8

Minutes Played	G-GS	MPG
Iyana Moore	9-8	28.0
Mikayla Blakes	10-10	28.0

#### EVANSVILLE PREVIOUS GAME STARTERS

Pos.	Name	Yr.	PPG	RPG	APG	Notes
G	Camryn Runner	Fr.	19.6	5.3	3.3	Leads the team in scoring through eight games
G	Júlia Palomo	Sr.	11.3	3.6	1.9	Scored a career-high 26 points against SIUE
G	Kaiden Kreinhagen	Fr.	3.8	1.5	0.5	Added her second steal of the year against SIUE
F	Maggie Hartwig	So.	18.3	9.4	0.6	Put up 24 points in three separate games for UE
F	Mae Dozier	Jr.	5.4	4.6	0.8	Has raised her assists per game in November

#FORTHEACES

# LAST TIME OUT

**EVANSVILLE, Ind.** – The University of Evansville women’s basketball team had its highest scoring performance in an 87-74 win over SIUE.

In their return to Meeks Family Fieldhouse the Purple Aces had an explosive offensive performance. Senior guard Júlia Palomo (La Seu d’Urgell, Spain) put up a career performance with 26 points on 78.9% shooting. UE had two other 20+ point scorers against the SIUE Cougars in sophomore forward Maggie Hartwig (Sauk City, Wis. / Sauk Prairie HS) and freshman guard Camryn Runner (Cicero, Ind. / Hamilton Heights HS).

“It’s always good to get back on a winning track and get a good home win,” said Head Coach Robyn Scherr after the game. “Of course, every coach has things they want to clean up. But I was really really proud of it and how we played overall. Júlia Palomo had a big night. She’s our senior steady guard. She’s having such a good season. A lot of times it doesn’t show up in a wow way on the stat line. But I was excited for her that it was a fairly big wow game for her in only missing two shots.”

Evansville took the lead in the first minute and a half and only trailed two other times over 40 minutes. In the first quarter, the Aces began with a six-point run while ending the quarter with seven points back-to-back. Two made free throws in the final seconds for Runner had UE in front by two after 10 minutes of play on 77.8% shooting.

Both teams struggled offensively in the second quarter of Sunday’s game. Only 10 points were scored in the first five minutes between either team as they traded made baskets. But Evansville broke out on an 11-5 run to end the half leading 38-30.

The second half of the game started with a back-and-forth pace in the first four minutes. The Aces led by as many as 11 in the third quarter but saw their lead shrink to six with under five minutes. UE was able to respond in the final four minutes of the frame with three made three-pointers and two trips to the free-throw line. Palomo made two treys in the third to get Evansville’s lead up to 15. SIUE made a three to end the quarter as the Aces headed into the fourth leading 59-47.

UE’s double-digit lead was cut into to start the final quarter as the Cougars made back-to-back shots. Evansville countered by getting into the lane, growing the lead to 14 in three and a half minutes. The teams traded shots until SIUE had a three-pointer and a free throw. The game’s final three minutes were spent mostly at the charity stripe as the Aces made 10 free throws. Palomo had the statement play to end the game with two straight fast-break layups with 48 seconds left on the clock. UE beat the Cougars 87-74 after 40 minutes in Meeks Family Fieldhouse.

Along with a career-high offensive performance, Palomo led the team in steals with three. Runner led Evansville on defense, grabbing seven rebounds along with a 21-point performance with 16 made free throws. Hartwig had 24 points for the Aces on offense with six rebounds and drawing eight fouls from SIUE.

Evansville will play its only Power 4 opponent for its next game on Saturday, December 14th. The Aces head to Nashville for the second time this season to play the Vanderbilt Commodores. UE returns to Memorial Gymnasium for the first time in 30 years next weekend with tip-off set for 2 p.m.



Official Basketball Box Score - Final  
**SIUE at Evansville**  
 12/08/24 Meeks Family Fieldhouse, Evansville  
 2024-25 Women's Basketball

Game Time: 1:00 PM  
 Game Duration: 2:15  
 Attendance: 412

Officials: Rachael Rayford, Shane Bennett, Jessica Fortner

SIUE - 74

Record: 1-7

NO.	Name	Pos	Min	FG		3P		FT		Rebounds		Fouls		TP	AS	TO	ST	Blocks		+/-	Shooting By Period		
				M-A	A-A	M-A	A-A	OR	DR	PF	FD	BS	BA					1st	2nd		3rd		
25	Brianna Woodridge	C	20:19	0/5	0/0	10/14	2	2	4	2	9	10	0	0	0	0	1	-3	1st	FG%	6-15	40.0%	
1	Ava Stoller	G	17:02	3/6	0/0	0/0	0	2	2	2	1	6	0	3	0	0	1	-14	3PT%	1-5	20.0%		
4	Macy Silvey	G	19:37	1/6	1/4	0/0	0	3	3	5	1	3	5	0	0	0	0	-10	FT%	7-10	70%		
14	Molly Sheehan	G	18:55	0/3	0/1	0/0	0	1	1	2	0	0	1	2	0	0	1	-5	2nd	FG%	4-11	36.4%	
22	Jaiden Bryant	G	21:07	3/7	0/0	0/0	1	1	2	4	1	6	0	1	0	0	0	-9	3PT%	0-2	0.0%		
5	Ava Gugliuzza	F	23:28	4/10	0/5	0/0	2	0	2	4	0	8	1	1	2	0	0	-2	FT%	2-3	66.7%		
15	Halle Smith	F	22:05	8/10	0/0	8/11	0	3	3	3	9	24	0	0	1	0	0	-8	3rd	FG%	6-17	35.3%	
23	Olivia Loveland	F	00:27	0/0	0/0	0/0	0	0	0	0	0	0	0	0	0	0	0	0	1	FT%	4-6	66.7%	
33	KK Rodriguez	F	19:30	2/8	1/2	3/4	1	1	2	4	2	8	3	4	0	0	2	2	4th	FG%	8-19	42.1%	
0	Kendal George	F	16:37	1/4	0/2	0/0	1	2	3	1	0	2	0	0	1	0	0	-9	3PT%	1-4	25.0%		
11	Meegan Fahy	F	02:10	0/0	0/0	0/0	0	0	0	0	0	0	0	1	0	0	0	1	FT%	10-14	71.4%		
10	Emiyah Cobb	F	18:43	2/3	1-1	2-4	2	3	5	4	2	7	2	1	0	0	0	-9	GM	FG%	24-62	38.7%	
	Team						2	2	4		0								3PT%	3-15	20.0%		
	Totals		24-62	3-15	23-33	11	20	31	31	25	74	12	13	4	0	5	-13		FT%	23-33	69.7%		

Technical Fouls: Rodriguez 4<sup>th</sup> 4:35

Dead Ball Rebounds: 7, 2

Evansville - 87

Record: 3-5

NO.	Name	Pos	Min	FG		3P		FT		Rebounds		Fouls		TP	AS	TO	ST	Blocks		+/-	Shooting By Period		
				M-A	A-A	M-A	A-A	OR	DR	PF	FD	BS	BA					1st	2nd		3rd		
4	Tamesha Dozier	F	11:49	2-3	2-3	0-0	0	1	1	5	0	6	0	2	0	0	0	8	1st	FG%	7-9	77.8%	
24	Maggie Hartwig	F	27:29	6-13	1-3	11-14	1	5	6	3	8	24	1	4	0	0	-2	3PT%	1-2	50.0%			
5	Julia Palomo	G	37:12	11-13	3-5	1-1	2	5	1	4	26	2	5	3	0	0	18	FT%	7-9	77.8%			
10	Camryn Runner	G	34:57	2-10	1-4	16-22	1	6	7	2	14	21	5	0	1	0	14	2nd	FG%	5-19	26.3%		
11	Kaiden Kreinhagen	G	18:46	0/2	0/2	0/0	0	1	1	2	1	0	1	2	1	0	0	1	3PT%	4-14	28.6%		
25	Claudia Clement	F	15:52	0-1	0-0	0-0	2	1	3	5	0	0	1	2	0	3	0	6	FT%	2-2	100%		
1	Avery Kelley	F	29:05	1-7	0-4	0-0	1	4	5	2	3	2	5	3	0	0	0	6	3rd	FG%	5-14	35.7%	
15	Elle Snyder	F	16:32	2-4	2-4	0-0	1	4	5	1	0	6	1	0	0	0	0	9	3PT%	4-8	50.0%		
21	Anica Skrivan	F	08:18	1-1	0-0	0-0	1	2	3	4	0	2	1	0	0	1	0	5	FT%	7-10	70%		
	Team						0	1	1		0								4th	FG%	8-12	66.7%	
	Totals		25-54	9-25	28-37	9	28	37	26	30	87	17	19	5	5	0	13		3PT%	0-1	0.0%		

Technical Fouls: Bench 4<sup>th</sup> 4:35

Dead Ball Rebounds: 7, 2

	SIUE		UE		Points from		Turnovers		Paint		Second Chance		Fast Breaks		Bench		
	SIUE	UE	SIUE	UE	SIUE	UE	SIUE	UE	SIUE	UE	SIUE	UE	SIUE	UE	SIUE	UE	
Biggest lead	3 (1 <sup>st</sup> 1:28)	15 (3 <sup>rd</sup> 0:43)	13	12	42	26	14	7	5	21	49	10	22	16	21	28	87
Best Scoring Run	7 (4 <sup>th</sup> 9:11)	8 (2 <sup>nd</sup> 2:32)	13	12	14	7	5	21	49	10	22	16	21	28	87	74	
Lead Changes	5	8 (2 <sup>nd</sup> 2:32)	14	7	5	21	49	10	22	16	21	28	87	74	74	74	
Times Tied	5	8 (2 <sup>nd</sup> 2:32)	14	7	5	21	49	10	22	16	21	28	87	74	74	74	
Time with Lead	02:42	33:27	14	7	5	21	49	10	22	16	21	28	87	74	74	74	



# 74

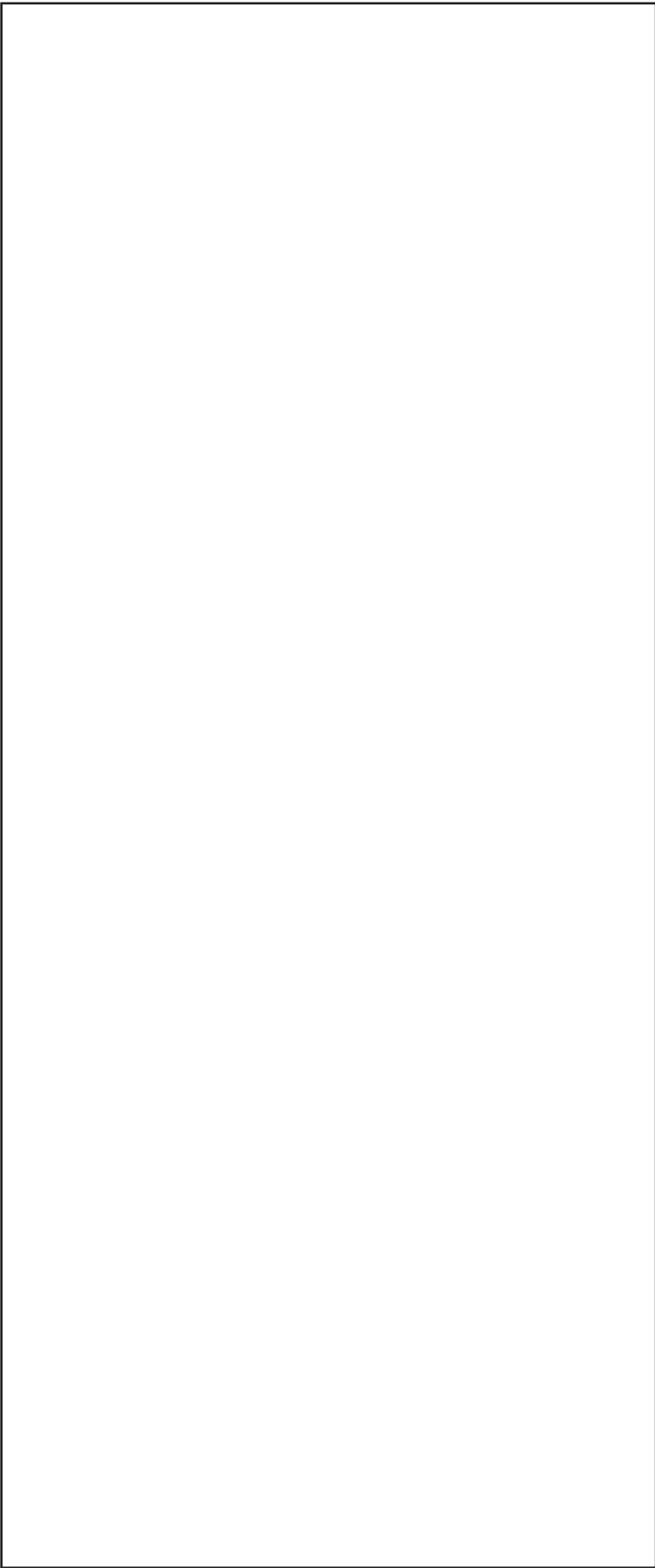


# 87

**Dec. 8, 2024**  
**Meeks Family Fieldhouse**  
**Evansville, Ind.**

#FORTHEACES

# LAST MEETING



**121**



**64**

Jan. 7, 1994  
Memorial Gymnasium  
Nashville

#FORTHEACES



**#0 Mira Hanna**  
Jr. // 6-0 // F  
Palm Harbor, Fla.



**#1 Avery Kelley**  
Fr. // 5-6 // PG  
Evansville, Ind.



**#2 Alana Striverson**  
Sr. // 5-10 // G  
Sellersburg, Ind.



**#4 Tameisha "Mae"  
Dozier**  
Jr. // 6-1 // F  
Louisville, Ky.



**#5 Julia Palomo**  
Sr. // 5-7 // G  
La Seu D'Urgell, Spain



**#10 Camryn Runner**  
Fr. // 5-8 // G  
Cicero, Ind.



**#11 Kaiden Kreinhagen**  
Fr. // 5-8 // G  
Indianapolis, Ind.



**#12 Tene Smith**  
So. // 5-6 // G  
Brampton, Ontario



**#13 Madlena Gerke**  
Sr. // 5-10 // G  
Riga, Latvia



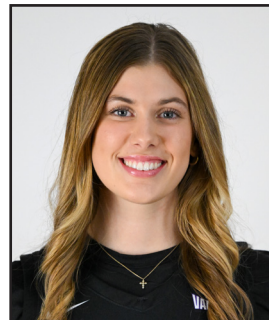
**#15 Elle Snyder**  
Fr. // 5-9 // G/F  
Latrobe, Penn.



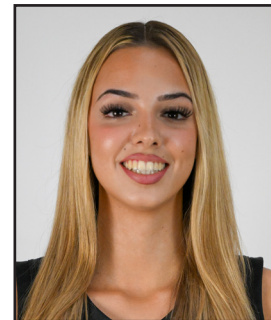
**#20 Kylee Norkus**  
Fr. // 5-10 // G  
Naperville, Ill.



**#21 Anica Skrivan**  
Sr. // F  
Trebinje, Bosnia & Herze-  
govina



**#24 Maggie Hartwig**  
So. // 6-1 // F  
Sauk City, Wis.



**#25 Claudia Celment**  
So. // 6-3 // F  
Barcelona, Spain



**#33 Logan Luebbers  
Palmer**  
Fr. // 5-9 // G  
Union, Ky.

**Pronunciations**

#2 Alana Striverson	Uh-lana Strye-vur-son
#5 Julia Palomo	Juh-lee-uh Pal-ohhhh-mo
#11 Kaiden Kreinhagen	Kay-den Krine-hagen
#12 Tené Smith	Tuh-ney Smith
#13 Madlena Gerke	Mad-lean-uhh Grrr-key
#20 Kylee Norkus	Ky-lee Nor-cuss
#21 Anica Skrivan	Ahnn-knee-sha Scree-vahn
#33 Logan Leubbers Palmer	Low-gan Lew-brrs Palm-er
HC Robyn Scherr	Share (Cher)
AC Zhaque Gray	Zhah-QWAY Gray

## 2024-25 Evansville women's Basketball Roster

No.	Name	Yr.	Pos.	Ht.	Hometown	Previous School
0	Mira Hanna	Jr.	F	6'0	Palm Harbor, Fla.	Arkansas - Little Rock
1	Avery Kelley	Fr.	G	5'6	Evansville, Ind.	Reitz Memorial HS
2	Alana Striverson	Sr.	G	5'10	Sellersburg, Ind.	Lindenwood
4	Mae Dozier	Jr.	F	6'1	Louisville, Ky.	Wabash Valley College
5	Julia Palomo	Sr.	G	5'7	La Seu D'Urgell, Spain	Casper College
10	Camryn Runner	Fr.	G	5'8	Cicero, Ind.	Hamilton Heights HS
11	Kaiden Kreinhagen	Fr.	G	5'8	Indianapolis, Ind.	North Central HS
12	Tené Smith	So.	G	5'6	Brampton, Ontario	Kings Christian Collegiate
13	Madlena Gerke	Sr.	G	5'10	Riga, Latvia	Eastern Florida College
15	Elle Snyder	Fr.	G/F	5'9	Latrobe, Penn.	Greater Latrobe HS
20	Kylee Norkus	Fr.	G	5'10	Naperville, Ill.	Neuqua Valley HS
21	Anica Skrivan	Sr.	F		Trebinje, Bosnia	Northeastern Oklahoma A&M
24	Maggie Hartwig	So.	F	6'1	Sauk City, Wis.	Sauk Prairie HS
25	Claudia Clement	So.	F	6'3	Barcelona, Spain	Winthrop
33	Logan Luebbers Palmer	Fr.	G	5'9	Union, Ky.	Randall K. Cooper HS

**Coaching Staff**

Head Coach Robyn Scherr (4th Year)

Associate Head Coach Dodie Dunson (2nd Year)

Assistant Coach Zhaque Gray (1st Year)

Assistant Coach Anna Newman (1st Year)

Assistant Coach Tyler McCormick (1st Year)

Grad Assistant Molly Davis (1st Year)

## UE's Record when...

Winning the tip	0-3
Losing the tip	3-2
Leading after one quarter	2-1
Trailing after one quarter	1-4
Tied after one quarter	0-0
Leading at the half	3-1
Trailing at the half	0-4
Tied at the half	0-0
Leading after three quarters	3-0
Trailing after three quarters	0-5
Tied after three quarters	0-0
Leading with five minutes remaining	3-0
Trailing with five minutes remaining	0-5
Tied with five minutes remaining	0-0
In overtime	0-1
UE out-rebounds opponent	3-1
Opponent out-rebounds UE	0-4
Same amount of rebounds	0-0
UE commits more turnovers	2-4
Opponent commits more turnovers	0-1
Same amount of turnovers	0-0
UE shoots 50% or better	0-1
Opponent shoots 50% or better	0-1
UE shoots less than 50%	3-4
Opponent shoots less than 50%	3-4
UE shoots better than opponent	2-1
Opponent shoots better than UE	0-3
Same shooting percentage	0-0
UE has more free throw attempts	3-2
Opponent has more free throw attempts	0-3
Same amount of free throw attempts	0-0
UE bench outscores opponent's bench	1-1
Opponent's bench outscores UE's bench	2-4
Benches score the same	0-0
UE scores less than 50	0-0
UE scores between 50-59	0-2
UE scores between 60-69	1-1
UE scores between 70-79	1-2
UE scores between 80-89	1-0
UE scores 90 or more	0-0
Opponent scores less than 50	0-0
Opponent scores between 50-59	1-0
Opponent scores between 60-69	1-2
Opponent scores between 70-79	1-1
Opponent scores between 80-89	1-0
Opponent scores 90 or more	0-1
In November	2-5
In December	1-0
In January	0-0
In February	0-0
In March	0-0
On Monday	0-1
On Tuesday	0-1
On Wednesday	0-0
On Thursday	1-0
On Friday	0-1
On Saturday	0-2
On Sunday	2-0
Morning	1-0
Afternoon	1-1
Night	1-4

## 2024-25 Evansville Starting Lineups

IU Indy	Runner	Palomo	Norkus	Hartwig	Dozier
Wright St.	Runner	Palomo	Norkus	Hartwig	Dozier
SEMO	Runner	Palomo	Norkus	Hartwig	Dozier
Lindenwood	Runner	Palomo	Norkus	Hartwig	Dozier
Lipscomb	Runner	Palomo	Kreinhagen	Hartwig	Dozier
Nicholls	Runner	Palomo	Kreinhagen	Hartwig	Dozier
Delaware	Runner	Palomo	Kreinhage	Hartwig	Dozier
SIUE	Runner	Palomo	Kreinhagen	Hartwig	Dozier

## Aces Leaders

### Jump balls controlled

Maggie Hartwig	2
Mae Dozier	1

### Scored UE's first points

Maggie Hartwig	3
Camryn Runner	2
Mae Dozier	2
Júlia Palomo	1

### First off UE bench

Claudia Clement	6
Anica Skrivan	1
Kaiden Kreinhagen	1

### Scoring leader

Maggie Hartwig	3
Camryn Runner	3
Júlia Palomo	1

### Three-point leader

Maggie Hartwig	2
Kaiden Kreinhagen	1
Camryn Runner	1
Júlia Palomo	1

### Rebounding leader

Maggie Hartwig	5
Camryn Runner	2
Mae Dozier	1

### Steals leader

Júlia Palomo	4
--------------	---

### Assists leader

Camryn Runner	3
Avery Kelley	1
Julia Palomo	1

### Blocks leader

Maggie Hartwig	2
Claudia Clement	2
Camryn Runner	1

### 10+ points

Maggie Hartwig	8
Camryn Runner	8
Júlia Palomo	5
Kylee Norkus	3
Kaiden Kreinhagen	1
Mae Dozier	1

### 15+ points

Camryn Runner	7
Maggie Hartwig	5
Júlia Palomo	2

### 20+ points

Maggie Hartwig	4
Camryn Runner	4
Júlia Palomo	1

### 25+ points

Camryn Runner	1
Júlia Palomo	1

### 10+ rebounds

Maggie Hartwig	2
----------------	---

### 15+ rebounds

Maggie Hartwig	1
----------------	---

### 5+ assists

Avery Kelley	2
Camryn Runner	2

### Double-doubles

Maggie Hartwig	2
----------------	---

### Free throws in final five min.

Camryn Runner	5
Avery Kelley	2
Maggie Hartwig	2
Kylee Norkus	1
Tameshia Dozier	1
Anica Skrivan	1

## The Last Time...

### "An Evansville player ..."

"Scored 25 points .....	Dec. 8, 2024 (Júlia Palomo, 26, SIUE)"
"Scored 30 points .....	Nov. 18, 2024 (Camryn Runner 30, at Lindenwood)"
"Scored 35 points .....	Nov. 24, 2021 (Je'Naiya Davis, 35, at Purdue Fort Wayne)"
"Scored 40 points .....	Never"
"Recorded 15 rebounds .....	Dec. 6, 2023 (Barbora Tomancova, 19, IUPUI)"
"Recorded 20 rebounds .....	Nov. 14, 2024 (Maggie Hartwig 20, SEMO)"
"Recorded 10 assists .....	Jan. 20, 2023 (Anna Newman, 10, Bradley)"
"Recorded five steals .....	Nov. 29, 2023 (Julia Palomo, 5, Bellarmine)"
"Recorded five blocks .....	March, 3, 2022 (Celine Dupont, 5, Drake)"
"Made five three-pointers .....	Nov. 7, 2022 (Myia Clark, 8, at Eastern Kentucky)"
"Made 10 free throws .....	Dec. 8, 2024 (Camryn Runner, 16, SIUE)"

### "An Evansville team ..."

"Scored 100+ points .....	Nov. 26, 2023 (103, at Chicago State)"
"Scored 90+ points .....	Feb. 15, 2024 (93, Southern Illinois)"
"Scored 50 points or less .....	March 9, 2024 (46, Northern Iowa)"
"Scored 40 points or less .....	Jan. 12, 2024 (40, Belmont)"
"Shot 60% from the field .....	Nov. 21, 2019 (.639 at Austin Peay)"
"Shot 55% from the field .....	Dec. 5, 2020 (.558, Purdue Fort Wayne)"
"Shot 50% from the field .....	Feb. 15, 2024 (.536, Southern Illinois)"
"Won three games in a row .....	Nov. 9 - Nov. 17, 2021 (3)"
"Won five games in a row .....	Feb. 17 - March 4, 2017 (5)"
"Won 10 games in a row .....	Jan. 12 - Feb. 14, 2008 (10)"
"Lost five games in a row .....	Feb. 17 - March 14 (8)"
"Won consecutive MVC games .....	Feb. 11- Feb. 15, 2024 (2)"
"Gave up 100+ points .....	Nov. 5, 2024 (101, at IU Indy)"
"Gave up 90+ points .....	Jan. 21, 2024 (99, at Southern Illinois)"
"Gave up 60 points or less .....	Nov. 14, 2024 (55, SEMO)"
"Gave up 50 points or less .....	Jan. 5, 2022 (45, at Valparaiso)"
"Gave up 40 points or less .....	Jan. 1, 2017 (36, Loyola)"
"Had five players score in double figures .....	Nov. 23, 2024 (5, at Lipscomb)"
"Had two players score at least 20 points .....	Dec. 8, 2024 (Júlia Palomo, 26 / Maggie Hartwig, 24 / Camryn Runner 21)"

### "An opposing player ..."

"Scored 30 points .....	Nov. 23, 2024 (Molly Heard, 32, at Lipscomb)"
"Scored 40 points .....	Dec. 21, 2015 (Nathalie Fontaine, 43, Ball State)"
"Recorded 15 rebounds .....	Feb. 4, 2023 (Anna Miller, 17, at Drake)"
"Recorded 20 rebounds .....	Nov. 26, 2023 (Evangelina Parrish, 20, at Chicago State)"
"Recorded 10 assists .....	Jan. 6, 2024 (Katie Dinnebier, 11, at Drake)"
"Recorded 15 assists .....	March 3, 2016 (Caitlin Ingle, 15, Drake)"
"Made five three-pointers .....	Nov. 5, 2024 (Nevaeh Foster, 5, vs. IU Indy)"
"Made 10 free throws .....	Dec. 8, 2024 (Brianna Wooldridge, 10, SIUE)"

### "An opposing team ..."

"Shot 60% from the field .....	March 14, 2024 (.608 vs. Illinois State)"
"Shot 55%+ from the field .....	Nov. 5, 2024 (.574, at IU Indy)"
"Shot 50%+ from the field .....	Feb. 15, 2024 (.515, Southern Illinois)"
"Shot 30% or lower from the field .....	Nov. 9, 2021 (.273, Austin Peay)"
"Had five players score in double figures .....	March 14, 2024 (.608 vs. Illinois State)"
"Had two players score at least 20 points .....	March 7, 2023 (Katie Dinnebier 25, and Grace Berg 22, Drake)"



**Head Coach Robyn Scherr**

**Record at Evansville: 26-74**

**MVC Record at UE: 10-48**

**Note:**

**Head Coach Robyn Scherr's Year-by-Year Totals**

Year	School	Record	Pct.	League	Pct.	Postseason
2010-11	Roosevelt	13-17	.433			
2011-12	Roosevelt	15-16	.484			
2012-13	Roosevelt	28-7	.800			
2013-14	Roosevelt	21-11	.656			
2014-15	Roosevelt	8-22	.267			
2015-16	Davenport	28-6	.824			
2016-17	Davenport	31-4	.886			
2021-22	Evansville	8-22	.262	2-16	.111	0-1
2022-23	Evansville	11-19	.367	6-14	.300	0-1
2023-24	Evansville	4-28	.125	2-18	.100	0-1
2024-25	Evansville	3-5	.375	0-0	.000	0-0
<b>Career</b>	<b>Ten Seasons</b>	<b>170-154</b>	<b>.520</b>	<b>10-47</b>	<b>.217</b>	<b>2-5</b>

**Coach's Notes**

Robyn Scherr enters her fourth season at the helm of the Purple Aces women's basketball program. In her first two seasons leading UE, Scherr returned Evansville to a level of success not seen in six seasons, resulting in a contract extension in June of 2023.

On April 20, 2021, Scherr, who had shown a knack for revitalizing programs and developing talent, was named as the 11th head coach in Evansville women's basketball program history. Since then, Scherr has made plenty of progress in rebuilding the Aces program, beginning with the 2021-22 season.

In her first season, Scherr led the Aces to eight wins, the most by an Evansville team since winning 14 games in 2016-17. Capturing a pair of victories in MVC play, Scherr side earned the no. 9 seed at Hoops in the Heartland, its highest seed since 2016-17. The Aces improvement continued going into Scherr second season behind the bench, as Evansville posted an 11-win campaign during the 2022-23 season. It marked the first double digit win season for the Aces and the highest victory total since the 2016-17 season.

One of the hallmarks of head coach Robyn Scherr system at UE has been playing fast. Installing a new system, Scherr achieved her goal of getting the Aces to play fast as Evansville finished 35th in the nation with 74.4 possessions per 40 minutes in her first season at the helm. The Aces averaged over 65 points per game in 2021-22, a nine-point increase from the 2020-21 campaign.

**ABOUT SCHERR-WELLS**

**COACHING EXPERIENCE**

2021- Present: Evansville Head Coach  
 2020-21: FIU, Asst. Coach  
 2017-20: Davidson, Asst. Coach  
 2015-17: Davenport, Head Coach  
 2010-15: Roosevelt, Head Coach

**UE MILESTONE VICTORIES**

First Win: 62-52 vs. Austin Peay, 11/9/21  
 First Home Win: 62-52 vs. Austin Peay, 11/9/21  
 First MVC Win: 74-73 vs. Bradley, 1/7/22  
 10th Win: 82-57 vs. Chicago State, 11/16/22  
 10th MVC Win: 93-89 vs. Southern Illinois, 2/15/24

**COACHING RECORD**

At UE: 26-74  
 In the MVC: 10-48  
 Home: 17-29  
 Road: 9-40  
 Neutral: 0-5  
 MVC Tournament: 0-3

**2024-25 Evansville Coaching Staff**



**Dodie Dunson**  
Associate Head Coach  
Bradley '11



**Zhaque Gray**  
Assistant Coach  
Penn State '12



**Anna Newman**  
Assistant Coach  
Evansville '23



**Tyler McCormick**  
Director of Basketball Ops  
Missouri Southern State  
'22



**Molly Davis**  
Graduate Assistant  
Iowa '24



## Individual Records

### Points

**Game:** 37, Sara Dickey at Murray State (12/3/14)

**Season:** 602, Sara Dickey (2014-15)

**Career:** 2,099, Sara Dickey (2013-17)

### Field Goals Made

**Game:** 14, five times by four players

**Season:** 225, Debbie Roberts-Shultz (1987-88)

**Career:** 718, Shelly Brand-Adlard (1982-85)

### Field Goal Percentage

**Season:** .596, Jenna Hayes (127-213), 2000-01

**Career:** .550, Arlene Peters (213-387), 1986-88

### Three-Point Field Goals Made

**Game:** 8, Twice, Most recent: Myia Clark vs. EKU (11/7/22)

**Season:** 86, Amy Lefever (1993-94)

**Career:** 205, Courtney Felke (2004-08)

### Free Throws Made

**Game:** 15, Anna Newman (2/19/21)

**Season:** 149, Latasha Austin (2001-02)

**Career:** 407, Rebekah Parker (2004-08)

### Free Throw Percentage

**Season:** .949, Mallory Ladd (74-78), 2012-13

**Career:** .864, Mallory Ladd (232-269), 2012-15

### Rebounds

**Game:** 27, Lana Korff vs. IU-Southeast (1977-78)

**Season:** 383, Christy Greis (1991-92)

**Career:** 1,286, Christy Greis (1990-93)

### Steals

**Game:** 11, Shinko Ono, vs. Eastern Illinois (11/24/98)

**Season:** 108, Latasha Austin (2001-02)

**Career:** 290, Latasha Austin (1998-02)

### Assists:

**Game:** 17, Angie McGrew vs. Oral Roberts (1986-87)

**Season:** 182, Angie McGrew (1987-88)

**Career:** 594, Angie McGrew (1986-89)

### Blocked Shots

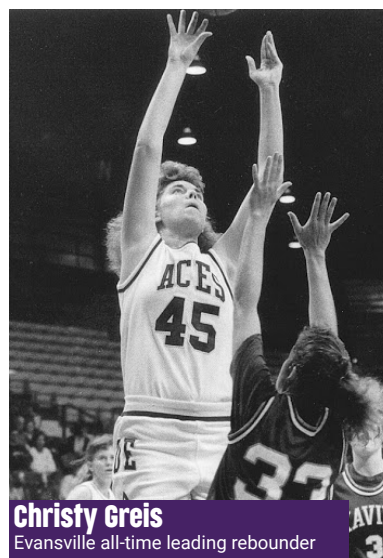
**Game:** 9, Christy Greis vs. Louisville (1989-90)

**Season:** 77, Christy Greis (1991-92)

**Career:** 241, Christy Greis (1990-93)



**Sara Dickey**  
Evansville all-time leading scorer



**Christy Greis**  
Evansville all-time leading rebounder

# Mira Hanna

JUNIOR - FORWARD - 6-0  
PALM HARBOR, FLA. - LITTLE ROCK



0

## ACES INFO

### PRIOR TO UE

- Spent two seasons with the Little Rock Trojans appearing in 12 games
- Played for the Trojans 2022-23 OVC Regular Season Championship team that appeared in the WNIT.

### PREP

- Spent her high school career at Berkley Prep in Tampa
- Averaged 13 points, 10 rebounds, and 4.5 blocks per game with the Buccaneers in her senior season
- Average of 4.5 blocks per game during her final season placed her 43rd in the nation in 2021-22
- Named a Hillsborough-Pinellas All-Star, a Hillsborough County Western All-Star, a First Team All-State honoree, and a finalist for the Florida Class 3A Player of the Year in 2021-22.
- Made history with Berkley Prep as the first women's basketball athlete to sign an NLI to play Division I basketball.
- Named a two-time Florida High School Athletics Association Academic State Champion.

## GAME-BY-GAME

### 2024-25 Season Highs

- Points:
- Rebounds:
- Assists:
- Steals:
- Blocks:
- FG made:
- FG attempts:
- 3FG Made:
- 3FG attempts:
- FT made:
- FT attempts:



2024-25 Evansville Women's Basketball  
Individual Game-by-Game  
All games

Page 1/10  
as of Nov 16, 2024

### #0 HANNA, Mira

Opponent	Date	GS	MIN	Total		3-Pointers		Free throws		Rebounds					PF	A	TO	BLK	STL	PTS	AVG
				FG-FGA	PCT	3FG-3FGA	PCT	FT-FTA	PCT	OFF	DEF	TOT	AVG								
at IU Indy	11/05/2024		01:43	0-0	.000	0-0	.000	0-0	.000	0	0	0	0	0	0	0	0	0	0	0	0.0
<b>Totals</b>		<b>0</b>	<b>01:43</b>	<b>0-0</b>	<b>.000</b>	<b>0-0</b>	<b>.000</b>	<b>0-0</b>	<b>.000</b>	<b>0</b>	<b>0</b>	<b>0</b>	<b>0</b>	<b>0</b>	<b>0</b>	<b>0</b>	<b>0</b>	<b>0</b>	<b>0</b>	<b>0</b>	<b>0.0</b>

### Player Averages

Games Played	Minutes/game	Points/game	FG Pct	3FG Pct	FT Pct	Rebounds/game	Assists/game	Turnovers/game	Assist/Turnover ratio	Steals/game	Blocks/game
1	1.7	0.0	0.0	0.0	0.0	0.0	0.0	0.0	0.0	0.0	0.0

### Career Highs

- Points: 2, Twice
- Rebounds: 4, vs. Kansas State (11/11/23)
- Assists: 1, vs. Kansas State (11/11/23)
- Steals: 1 at SIUE (2/1/24)
- Blocks: N/A
- FG made: 1, Twice
- FG attempts: 2, Twice
- 3FG Made: N/A
- 3FG attempts: N/A
- FT made: N/A
- FT attempts: N/A

### Career Stats

SEASON	TEAM	GP-GS	MIN/AVG	Field Goals		3-Po		FT-FTA	FT%	OFF	DEF	TOT	AVG	PF-FO	A	TO	BLK	STL	PTS	AVG
				FG-FGA	FG%	3FG-3FGA	3FG%													
2022-23	LR	5-0	12/2.5	0-1	.000	0-0	.000	0-0	.000	0	1	1	0.2	0-0	0	2	0	0	0	0.0
2023-24	LR	7-0	33/4.7	2-8	.250	0-0	.000	0-0	.000	3	5	8	1.1	3-0	1	5	0	1	4	0.6
2024-25	Evans	1-0	2/1.7	0-0	.000	0-0	.000	0-0	.000	0	0	0	0.0	0-0	0	0	0	0	0	0.0
<b>TOTAL FOR Evans</b>		<b>1-0</b>	<b>2/1.7</b>	<b>0-0</b>	<b>.000</b>	<b>0-0</b>	<b>.000</b>	<b>0-0</b>	<b>.000</b>	<b>0</b>	<b>0</b>	<b>0</b>	<b>0.0</b>	<b>0-0</b>	<b>0</b>	<b>0</b>	<b>0</b>	<b>0</b>	<b>0</b>	<b>0.0</b>
<b>TOTAL</b>		<b>13-0</b>	<b>47/3.6</b>	<b>2-9</b>	<b>.222</b>	<b>0-0</b>	<b>.000</b>	<b>0-0</b>	<b>.000</b>	<b>3</b>	<b>6</b>	<b>9</b>	<b>0.7</b>	<b>3-0</b>	<b>1</b>	<b>7</b>	<b>0</b>	<b>1</b>	<b>4</b>	<b>0.3</b>

#FUKTHEJACK

# Avery Kelley

FRESHMAN - POINT GUARD - 5-6  
EVANSVILLE, IND. - MEMORIAL HS



1

## ACES INFO

### PREP

- Four year member of the Memorial Tigers varsity girls basketball team.
- A multi sport athlete having spent two years on the Tiger's softball team and one year on the track team.
- Named an Indiana Jr. All-Star, a First Team selection for both All-Conference, All-Region, All-District and an All-State honorable mention.
- Played in the Hoosier Gym All-Star Classic and the HBCA All-Star game to end her high school career with the Tigers.
- Averaged 14.6 points, 6.2 rebounds, 3.8 assists, and 2.2 steals a game during her final season with the Tigers.
- Averaged 15 points per game with 4 assists, 5 rebounds, and 2 steals in her junior season.
- Both parents' played basketball at Murray State in the late 1990s.

## 2024-25 Season Highs

Points: 5, Twice  
Rebounds: 6, vs. Delaware (11/30/24)  
Assists: 5, Twice  
Steals: 2, vs. Delaware (11/30/24)  
Blocks:  
FG made: 2, vs. Delaware (11/30/24)  
FG attempts: 9, vs. Delaware (11/30/24)  
3FG Made:  
3FG attempts: 4, vs. SIUE (12/8/24)  
FT made: 5 vs. Wright State (11/10/24)  
FT attempts: 6 vs. Wright State (11/10/24)

## Career Highs

Points: 5, Twice  
Rebounds: 6, vs. Delaware (11/30/24)  
Assists: 5, Twice  
Steals: 2, vs. Delaware (11/30/24)  
Blocks:  
FG made: 2, vs. Delaware (11/30/24)  
FG attempts: 9, vs. Delaware (11/30/24)  
3FG Made:  
3FG attempts: 4, vs. SIUE (12/8/24)  
FT made: 5 vs. Wright State (11/10/24)  
FT attempts: 6 vs. Wright State (11/10/24)

## Career Stats

### KELLEY, Avery

		Field Goals		3-Point		F-Throws		Rebounds				Scoring								
SEASON	TEAM	GP-GS	MIN/AVG	FG-FGA	FG%	3FG-3FGA	3FG%	FT-FTA	FT%	OFF	DEF	TOT	AVG	PF-FO	A	TO	BLK	STL	PTS	AVG
2024-25	Evans	8-0	131/16.4	6-29	.207	0-9	.000	8-10	.800	3	20	23	2.9	11-0	21	16	0	3	20	2.5
<b>TOTAL</b>		<b>8-0</b>	<b>131/16.4</b>	<b>6-29</b>	<b>.207</b>	<b>0-9</b>	<b>.000</b>	<b>8-10</b>	<b>.800</b>	<b>3</b>	<b>20</b>	<b>23</b>	<b>2.9</b>	<b>11-0</b>	<b>21</b>	<b>16</b>	<b>0</b>	<b>3</b>	<b>20</b>	<b>2.5</b>

## GAME-BY-GAME



2024-25 Evansville Women's Basketball  
Individual Game-by-Game  
All games

Page 2/12  
as of Dec 12, 2024

### #1 KELLEY, Avery

Opponent	Date	GS	MIN	Total FG-FGA	PCT	3-Pointers 3FG-3FGA	PCT	Free throws FT-FTA	PCT	Rebounds OFF	DEF	TOT	AVG	PF	A	TO	BLK	STL	PTS	AVG
at IU Indy	11/05/2024		23:22	1-7	.143	0-1	.000	2-2	1.000	1	3	4	4.0	3	5	2	0	1	4	4.0
Wright St.	11/10/2024		07:34	0-0	.000	0-0	.000	5-6	.833	0	1	1	2.5	1	0	1	0	0	5	4.5
Southeast Mo. St.	11/14/2024		07:48	0-0	.000	0-0	.000	0-0	.000	0	2	2	2.3	2	1	3	0	0	0	3.0
at Lindenwood	11/18/2024		13:44	1-4	.250	0-2	.000	0-0	.000	0	3	3	2.5	1	1	1	0	0	2	2.8
at Lipscomb	11/23/2024		10:24	1-1	1.000	0-0	.000	0-0	.000	0	2	2	2.4	1	4	3	0	0	2	2.6
vs Nicholls	11/29/2024		10:41	0-1	.000	0-0	.000	0-0	.000	0	0	0	2.0	0	2	0	0	0	0	2.2
vs Delaware	11/30/2024		28:41	2-9	.222	0-2	.000	1-2	.500	1	5	6	2.6	1	3	3	0	2	5	2.6
SIUE	12/08/2024		29:05	1-7	.143	0-4	.000	0-0	.000	1	4	5	2.9	2	5	3	0	0	2	2.5
<b>Totals</b>			<b>0 131:19</b>	<b>6-29</b>	<b>.207</b>	<b>0-9</b>	<b>.000</b>	<b>8-10</b>	<b>.800</b>	<b>3</b>	<b>20</b>	<b>23</b>	<b>2.9</b>	<b>11</b>	<b>21</b>	<b>16</b>	<b>0</b>	<b>3</b>	<b>20</b>	<b>2.5</b>

### Player Averages

Games Played	Minutes/game	Points/game	FG Pct	3FG Pct	FT Pct	Rebounds/game	Assists/game	Turnovers/game	Assist/Turnover ratio	Steals/game	Blocks/game
8	16.4	2.5	20.7	0.0	80.0	2.9	2.6	2.0	1.3	0.4	0.0

# Alana Striverson

SENIOR - GUARD - 5-10  
SELLERSBURG, IND. - LINDENWOOD



2

## ACES INFO

### 2023-24

- Appeared in 18 games with 11 starts for the Purple Aces.
- Averaged 24.4 minutes a game with 7.9 points and 1.2 assists.
- Fifth on the team in scoring average.
- Set a career-high in free throws made and free throws attempted at UNI on January 4th.

### PRIOR TO UE

- Spent two seasons with the Lindenwood Lions...
- Played in 39 total games for the Lions and made 16 starts ... averaged 22.3 minutes per game, compiling 870 minutes played overall ...
- Scored 259 points to average 6.6 points per game
- Contributed 63 assists throughout the year, averaging 1.6 assists per game with a career-high of five total assists against William Jewell on Jan. 20
- Had 86 total rebounds to average 2.2 rebounds per game
- Set a career-high of 25 points against Missouri S&T on Feb. 14, where she shot 8-11 from the field, 5-6 from outside the arc and 4-5 from the free throw line .

## 2023-24 Season Highs

Points:	15 at Drake (1/6/24)
Rebounds:	4 at Chicago State (11/26/23)
Assists:	4, Murray State (1/14/24)
Steals:	1, Three Times
Blocks:	1 at UNI (1/4/24)
FG made:	5 at Drake (1/6/24)
FG attempts:	14, Bellarmine (11/29/23)
3FG Made:	4, Twice
3FG attempts:	11, Bellarmine (11/29/23)
FT made:	6 at UNI (1/4/24)
FT attempts:	6 at UNI (1/4/24)

## GAME-BY-GAME

## Career Highs

Points:	25, Missouri S&T (2/14/22)
Rebounds:	11 at Rockhurst (2/28/22)
Assists:	5, William Jewell (1/20/22)
Steals:	3, UIndy (2/24/22)
Blocks:	2, UT Martin (2/4/23)
FG made:	9, Morehead St. (1/21/23)
FG attempts:	16, Morehead St. (1/21/23)
3FG Made:	5, Missouri S&T (2/14/22)
3FG attempts:	11, Bellarmine (11/29/23)
FT made:	6 at UNI (1/4/24)
FT attempts:	6, Twice

## Career Stats

SEASON	TEAM	GP-GS	MIN/AVG	FG-FGA	FG%	3FG-3FGA	3FG%	FT-FTA	FT%	OFF	DEF	TOT	AVG	PF-FO	A	TO	BLK	STL	PTS	AVG
2021-22	Linden	25-11	509/20.4	50-135	.370	36-89	.404	25-37	.676	13	47	60	2.4	37-0	35	30	1	9	161	6.4
2022-23	Linden	25-16	664/26.5	59-199	.296	27-113	.239	13-26	.500	8	45	53	2.1	62-1	52	69	5	16	158	6.3
2023-24	Evans	18-11	439/24.4	38-120	.317	26-80	.325	41-48	.854	5	12	17	0.9	28-0	22	34	1	4	143	7.9
<b>TOTAL FOR Evans</b>		<b>18-11</b>	<b>439/24.4</b>	<b>38-120</b>	<b>.317</b>	<b>26-80</b>	<b>.325</b>	<b>41-48</b>	<b>.854</b>	<b>5</b>	<b>12</b>	<b>17</b>	<b>0.9</b>	<b>28-0</b>	<b>22</b>	<b>34</b>	<b>1</b>	<b>4</b>	<b>143</b>	<b>7.9</b>
<b>TOTAL</b>		<b>68-38</b>	<b>1612/23.7</b>	<b>147-454</b>	<b>.324</b>	<b>89-282</b>	<b>.316</b>	<b>79-111</b>	<b>.712</b>	<b>26</b>	<b>104</b>	<b>130</b>	<b>1.9</b>	<b>127-1</b>	<b>109</b>	<b>133</b>	<b>7</b>	<b>29</b>	<b>462</b>	<b>6.8</b>

#FOR THE ACES

# Tamesha Dozier

JUNIOR - FORWARD - 6-1  
LOUISVILLE, KY. - WABASH VALLEY COLLEGE



4

## ACES INFO

### 2023-24

- Appeared in 29 games with one start for the Purple Aces.
- Averaged 2.1 points, 3 rebounds, and 0.4 steals a game in 15 minutes of action.
- Set three career highs at Indiana with 11 points, four field goals made, and three three-point attempts on December 18th.

### Prior to UE

- Played one season at Wabash Valley College averaging nearly seven points and four boards per game, while shooting just shy of 50% from the field.
- Across her 31 appearances for WVC, Dozier recorded double-figures in scoring six times.

### PREP

- Played for Butler High School in Louisville, Ky.

## 2024-25 Season Highs

Points: 10 at Lipscomb (11/23/24)  
Rebounds: 8, vs. Nicholls (11/29/24)  
Assists: 3 vs. Wright State (11/10/24)  
Steals: 1 at Lindenwood (11/18/24)  
Blocks: 1 at IU Indy (11/5/24)  
FG made: 4 at Lipscomb (11/23/24)  
FG attempts: 7 at Lipscomb (11/23/24)  
3FG Made: 2, Twice  
3FG attempts: 3, Four times  
FT made: 2, Twice  
FT attempts: 2, Three times

## Career Highs

Points: 11 at Indiana (12/18/23)  
Rebounds: 9 at Chicago State (11/26/23)  
Assists: 3, Twice  
Steals: 3 at SEMO (12/21/23)  
Blocks: 1, Five Times  
FG made: 4, Twice  
FG attempts: 8 at UNI (1/4/24)  
3FG Made: 3 at Indiana (12/18/23)  
3FG attempts: 7 at UNI (1/4/24)  
FT made: 2, Six Times  
FT attempts: 6 at Missouri State (1/19/24)

## Career Stats

SEASON	TEAM	GP-GS	MIN/AVG	Field Goals		3-Point		F-Throws		Rebounds				Scoring						
				FG-FGA	FG%	3FG-3FGA	3FG%	FT-FTA	FT%	OFF	DEF	TOT	AVG	PF-FO	A	TO	BLK	STL	PTS	AVG
2023-24	Evans	29-1	444/15.3	22-88	.250	6-37	.162	12-24	.500	13	75	88	3.0	62-3	8	38	4	11	62	2.1
2024-25	Evans	8-8	179/22.4	16-34	.471	7-15	.467	4-6	.667	9	28	37	4.6	24-2	6	16	1	1	43	5.4
<b>TOTAL</b>		<b>37-9</b>	<b>623/16.8</b>	<b>38-122</b>	<b>.311</b>	<b>13-52</b>	<b>.250</b>	<b>16-30</b>	<b>.533</b>	<b>22</b>	<b>103</b>	<b>125</b>	<b>3.4</b>	<b>86-5</b>	<b>14</b>	<b>54</b>	<b>5</b>	<b>12</b>	<b>105</b>	<b>2.8</b>

## GAME-BY-GAME



2024-25 Evansville Women's Basketball  
Individual Game-by-Game  
All games

Page 3/12  
as of Dec 12, 2024

### #4 DOZIER, Tamesha

Opponent	Date	GS	MIN	Total FG-FGA	PCT	3-Pointers 3FG-3FGA	PCT	Free throws FT-FTA	PCT	Rebounds OFF DEF TOT	AVG	PF	A	TO	BLK	STL	PTS	AVG		
at IU Indy	11/05/2024	*	21:18	2-6	.333	1-3	.333	0-2	.000	3	4	7	7.0	1	0	4	1	0	5	5.0
Wright St.	11/10/2024	*	21:05	0-2	.000	0-1	.000	0-0	.000	1	4	5	6.0	3	3	2	0	0	0	2.5
Southeast Mo. St.	11/14/2024	*	26:38	1-2	.500	1-1	1.000	2-2	1.000	0	1	1	4.3	2	0	2	0	0	5	3.3
at Lindenwood	11/18/2024	*	25:12	3-5	.600	1-1	1.000	0-0	.000	1	6	7	5.0	4	1	2	0	1	7	4.3
at Lipscomb	11/23/2024	*	29:31	4-7	.571	2-3	.667	0-0	.000	1	2	3	4.6	3	1	1	0	0	10	5.4
vs Nicholls	11/29/2024	*	25:39	3-4	.750	0-0	.000	0-0	.000	2	6	8	5.2	1	1	2	0	0	6	5.5
vs Delaware	11/30/2024	*	17:45	1-5	.200	0-3	.000	2-2	1.000	1	4	5	5.1	5	0	1	0	0	4	5.3
SIUE	12/08/2024	*	11:49	2-3	.667	2-3	.667	0-0	.000	0	1	1	4.6	5	0	2	0	0	6	5.4
<b>Totals</b>			<b>8 178:57</b>	<b>16-34</b>	<b>.471</b>	<b>7-15</b>	<b>.467</b>	<b>4-6</b>	<b>.667</b>	<b>9</b>	<b>28</b>	<b>37</b>	<b>4.6</b>	<b>24</b>	<b>6</b>	<b>16</b>	<b>1</b>	<b>1</b>	<b>43</b>	<b>5.4</b>

### Player Averages

Games Played	Minutes/game	Points/game	FG Pct	3FG Pct	FT Pct	Rebounds/game	Assists/game	Turnovers/game	Assist/Turnover ratio	Steals/game	Blocks/game
8	22.4	5.4	47.1	46.7	66.7	4.6	0.8	2.0	0.4	0.1	0.1

#FORTHEACES

# Julia Palomo

SENIOR - GUARD - 5-7  
LA SEU D'URGELL, SPAIN - CASPER COLLEGE



5

## ACES INFO

### 2023-24

- Appeared in 32 games with 27 starts for the Purple Aces.
- Led the Aces in steals with 40 in her first season of Division I basketball.
- Averaged 4.1 points, 2.5 rebounds, 1.7 assists, and 1.3 steals over 23.4 minutes a game.
- Had a career-high game against Lindenwood on December 16th with nine points, six assists, and seven field goal attempts.

### PRIOR TO UE

- Spent one season at NJACC Casper College
- Averaged over seven points per game and chipped-in nearly four boards per game, while compiling 48 steals on the season.
- Led the team in three pointers with 30 triples a season ago, shooting at a 44% clip.

## GAME-BY-GAME

### 2024-25 Season Highs

Points: 26, vs. SIUE (12/8/24)  
Rebounds: 5 at Lipscomb (11/23/24)  
Assists: 3, Twice  
Steals: 3, Five times  
Blocks: 1 at Lipscomb (11/23/24)  
FG made: 11, vs. SIUE (12/8/24)  
FG attempts: 13, vs. SIUE (12/8/24)  
3FG Made: 3, vs. SIUE (12/8/24)  
3FG attempts: 5, vs. SIUE (12/8/24)  
FT made: 3, Twice  
FT attempts: 4, Twice

### Career Highs

Points: 26, vs. SIUE (12/8/24)  
Rebounds: 6, Twice  
Assists: 6, Lindenwood (12/16/23)  
Steals: 5, Bellarmine (11/29/23)  
Blocks: 1, Twice  
FG made: 11, vs. SIUE (12/8/24)  
FG attempts: 13, vs. SIUE (12/8/24)  
3FG Made: 3, vs. SIUE (12/8/24)  
3FG attempts: 5, vs. SIUE (12/8/24)  
FT made: 3, Three times  
FT attempts: 4, Four times

### Career Stats

SEASON	TEAM	GP-GS		Field Goals		3-Point		F-Throws		Rebounds				Scoring							
		GP	GS	FG-FGA	FG%	3FG-3FGA	3FG%	FT-FTA	FT%	OFF	DEF	TOT	AVG	PF-FO	A	TO	BLK	STL	PTS	AVG	
2023-24	Evans	32	27	49	119	.412	13	48	.271	21	58	79	2.5	63	0	54	45	1	40	132	4.1
2024-25	Evans	8	8	35	71	.493	11	25	.440	9	12	29	3.6	18	1	15	25	1	22	90	11.3
<b>TOTAL</b>		<b>40</b>	<b>35</b>	<b>1023</b>	<b>25.6</b>	<b>.442</b>	<b>24</b>	<b>73</b>	<b>.329</b>	<b>29</b>	<b>79</b>	<b>108</b>	<b>2.7</b>	<b>81</b>	<b>1</b>	<b>69</b>	<b>70</b>	<b>2</b>	<b>62</b>	<b>222</b>	<b>5.6</b>



2024-25 Evansville Women's Basketball  
Individual Game-by-Game  
All games

Page 4/12  
as of Dec 12, 2024

### #5 PALOMO, Julia

Opponent	Date	GS	MIN	Total		3-Pointers		Free throws		Rebounds			PF	A	TO	BLK	STL	PTS	AVG		
				FG-FGA	PCT	3FG-3FGA	PCT	FT-FTA	PCT	OFF	DEF	TOT								AVG	
at IU Indy	11/05/2024	*	31:09	5-10	.500	2-2	1.000	3-4	.750	0	3	3	3.0	2	1	3	0	1	15	15.0	
Wright St.	11/10/2024	*	34:51	1-7	.143	0-1	.000	3-4	.750	0	4	4	3.5	2	1	1	0	3	5	10.0	
Southeast Mo. St.	11/14/2024	*	26:06	2-6	.333	1-3	.333	0-0	.000	1	1	2	3.0	2	2	4	0	3	5	8.3	
at Lindenwood	11/18/2024	*	29:48	5-9	.556	1-4	.250	1-1	1.000	1	1	2	2.8	5	3	3	0	3	12	9.3	
at Lipscomb	11/23/2024	*	40:00	5-9	.556	1-2	.500	0-0	.000	1	4	5	3.2	1	3	2	1	4	11	9.6	
vs Nicholls	11/29/2024	*	38:05	5-7	.714	2-4	.500	0-0	.000	3	2	5	3.5	2	2	6	0	2	12	10.0	
vs Delaware	11/30/2024	*	35:52	1-10	.100	1-4	.250	1-2	.500	0	3	3	3.4	3	1	1	0	3	4	9.1	
SIUE	12/08/2024	*	37:12	11-13	.846	3-5	.600	1-1	1.000	2	3	5	3.6	1	2	5	0	3	26	11.3	
<b>Totals</b>			<b>8</b>	<b>273:03</b>	<b>35-71</b>	<b>.493</b>	<b>11-25</b>	<b>.440</b>	<b>9-12</b>	<b>.750</b>	<b>8</b>	<b>21</b>	<b>29</b>	<b>3.6</b>	<b>18</b>	<b>15</b>	<b>25</b>	<b>1</b>	<b>22</b>	<b>90</b>	<b>11.3</b>

### Player Averages

Games Played	Minutes/game	Points/game	FG Pct	3FG Pct	FT Pct	Rebounds/game	Assists/game	Turnovers/game	Assist/Turnover ratio	Steals/game	Blocks/game
8	34.1	11.3	49.3	44.0	75.0	3.6	1.9	3.1	0.6	2.8	0.1

#FORTHEACES

# Camryn Runner

FRESHMAN - GUARD - 5-8  
CICERO, IND. - HAMILTON HEIGHTS HS



10

## ACES INFO

### PREP

- Was a four year starter for the Hamilton Heights Huskies.
- Named a four-time All-State, All-Sectional, and All-Conference honoree as the Huskies made four runs to regionals in class 3A.
- Ended her career at Hamilton Heights with 1,962 points, 570 rebounds, 288 steals, and 195 assists.
- Averaged 26.9 points, 5.6 rebounds, 2.7, assists, and four steals a game in her senior season at Hamilton Heights.
- Named a finalist for the 2024 Indiana Miss Basketball award, and was named to the AP Indiana All-State Third Team.
- Active on the club basketball circuit with Indiana Flight, a team that was a National Runner Up in the Adidas circuit over the summer.
- A multi-sport athlete as a member of the Huskies golf and track and field teams.

## GAME-BY-GAME

### 2024-25 Season Highs

Points: 30 at Lindenwood (11/18/24)  
Rebounds: 9 vs. SEMO (11/14/24)  
Assists: 5, Twice  
Steals: 3 vs. Wright State (11/10/24)  
Blocks: 2, Twice  
FG made: 9 at Lindenwood (11/18/24)  
FG attempts: 18 at Lindenwood (11/18/24)  
3FG Made: 4 at Lindenwood (11/18/24)  
3FG attempts: 7 at Lindenwood (11/18/24)  
FT made: 16 vs. SIUE (12/8/24)  
FT attempts: 22 vs. SIUE (12/8/24)

### Career Highs

Points: 30 at Lindenwood (11/18/24)  
Rebounds: 9 vs. SEMO (11/14/24)  
Assists: 5, Twice  
Steals: 3 vs. Wright State (11/10/24)  
Blocks: 2, Twice  
FG made: 9 at Lindenwood (11/18/24)  
FG attempts: 18 at Lindenwood (11/18/24)  
3FG Made: 4 at Lindenwood (11/18/24)  
3FG attempts: 7 at Lindenwood (11/18/24)  
FT made: 16 vs. SIUE (12/8/24)  
FT attempts: 22 vs. SIUE (12/8/24)

### Career Stats

SEASON	TEAM	GP-GS	MIN/AVG	Field Goals		3-Point		F-Throws		Rebounds				Scoring						
				FG-FGA	FG%	3FG-3FGA	3FG%	FT-FTA	FT%	OFF	DEF	TOT	AVG	PF-FO	A	TO	BLK	STL	PTS	AVG
2024-25	Evans	8-8	273/34.1	35-99	.354	10-32	.313	77-95	.811	9	33	42	5.3	26-1	26	35	10	12	157	19.6
<b>TOTAL</b>		<b>8-8</b>	<b>273/34.1</b>	<b>35-99</b>	<b>.354</b>	<b>10-32</b>	<b>.313</b>	<b>77-95</b>	<b>.811</b>	<b>9</b>	<b>33</b>	<b>42</b>	<b>5.3</b>	<b>26-1</b>	<b>26</b>	<b>35</b>	<b>10</b>	<b>12</b>	<b>157</b>	<b>19.6</b>



2024-25 Evansville Women's Basketball  
Individual Game-by-Game  
All games

Page 5/12  
as of Dec 12, 2024

### #10 RUNNER, Camryn

Opponent	Date	GS	MIN	Total		3-Pointers		Free throws		Rebounds				PF	A	TO	BLK	STL	PTS	AVG
				FG-FGA	PCT	3FG-3FGA	PCT	FT-FTA	PCT	OFF	DEF	TOT	AVG							
at IU Indy	11/05/2024	*	29:27	4-11	.364	2-3	.667	8-10	.800	1	4	5	5.0	3	3	5	1	1	18	18.0
Wright St.	11/10/2024	*	37:52	5-13	.385	0-1	.000	7-10	.700	0	6	6	5.5	4	3	3	2	3	17	17.5
Southeast Mo. St.	11/14/2024	*	32:20	2-11	.182	1-6	.167	15-18	.833	3	6	9	6.7	4	4	9	1	1	20	18.3
at Lindenwood	11/18/2024	*	41:06	9-18	.500	4-7	.571	8-9	.889	0	1	1	5.3	5	0	8	1	1	30	21.3
at Lipscomb	11/23/2024	*	31:13	6-12	.500	1-5	.200	5-7	.714	1	3	4	5.0	4	5	2	1	1	18	20.6
vs Nicholls	11/29/2024	*	35:12	2-10	.200	1-3	.333	6-6	1.000	0	3	3	4.7	3	2	5	1	2	11	19.0
vs Delaware	11/30/2024	*	30:56	5-14	.357	0-3	.000	12-13	.923	3	4	7	5.0	1	4	3	2	2	22	19.4
SIUE	12/08/2024	*	34:57	2-10	.200	1-4	.250	16-22	.727	1	6	7	5.3	2	5	0	1	1	21	19.6
<b>Totals</b>			<b>8</b>	<b>273:02</b>	<b>35-99</b>	<b>.354</b>	<b>10-32</b>	<b>.313</b>	<b>77-95</b>	<b>.811</b>	<b>9</b>	<b>33</b>	<b>42</b>	<b>5.3</b>	<b>26</b>	<b>35</b>	<b>10</b>	<b>12</b>	<b>157</b>	<b>19.6</b>

### Player Averages

Games Played	Minutes/game	Points/game	FG Pct	3FG Pct	FT Pct	Rebounds/game	Assists/game	Turnovers/game	Assist/Turnover ratio	Steals/game	Blocks/game
8	34.1	19.6	35.4	31.3	81.1	5.3	3.3	4.4	0.7	1.5	1.3

#FOR THE ACES

# Kaiden Kreinhagen

FRESHMAN - GUARD - 5-8

INDIANAPOLIS, IND. - NORTH CENTRAL HS



11

## ACES INFO

### PREP

- Spent four years at North Central High School in Indianapolis.
- Was part of back-to-back sectional championships in 2020-21 and 2021-22.
- Had a breakout season in 2023-24 raising her points per game average over nine points from 2022-23.
- Earned All-Marion County and All-MIC Conference recognition, while being named to Hoosier Basketball Magazine's All-State Second Team and a Top 60 Senior.
- Named a three-time Academic All-MIC Conference recipient.
- Spent time with the Indiana Girls Basketball club team in the Girls Under Armour Association. Spent three years with the program and spent the fall of 2023 helping coach an IGB Lil Ballers team.
- Was a two-sport athlete at North Central, playing both basketball and softball for a year.
- Both parents played collegiate sports at the University of Indianapolis.
- Great grandfather Jerry Canterbury played for the UE men's basketball team from 1948-1951 under Aces' legendary coach Arad McCutchan.

## GAME-BY-GAME



2024-25 Evansville Women's Basketball  
Individual Game-by-Game  
All games

Page 6/12  
as of Dec 12, 2024

### 2024-25 Season Highs

Points: 10 at Lipscomb (11/23/24)  
Rebounds: 3, vs. Nicholls (11/29/24)  
Assists: 2, vs. Nicholls (11/29/24)  
Steals: 1, Twice  
Blocks:  
FG made: 4 at Lipscomb (11/23/24)  
FG attempts: 8 at Lipscomb (11/23/24)  
3FG Made: 3 vs. SEMO (11/14/24)  
3FG attempts: 6, Twice  
FT made: 2, vs. Nicholls (11/29/24)  
FT attempts: 2, vs. Nicholls (11/29/24)

### Career Highs

Points: 10 at Lipscomb (11/23/24)  
Rebounds: 3, vs. Nicholls (11/29/24)  
Assists: 2, vs. Nicholls (11/29/24)  
Steals: 1, Twice  
Blocks:  
FG made: 4 at Lipscomb (11/23/24)  
FG attempts: 8 at Lipscomb (11/23/24)  
3FG Made: 3 vs. SEMO (11/14/24)  
3FG attempts: 6, Twice  
FT made: 2, vs. Nicholls (11/29/24)  
FT attempts: 2, vs. Nicholls (11/29/24)

### #11 KREINHAGEN, Kaiden

Opponent	Date	GS	MIN	Total		3-Pointers		Free throws		Rebounds				PF	A	TO	BLK	STL	PTS	AVG
				FG-FGA	PCT	3FG-3FGA	PCT	FT-FTA	PCT	OFF	DEF	TOT	AVG							
at IU Indy	11/05/2024		17:22	0-3	.000	0-2	.000	0-0	.000	0	1	1	1.0	1	0	1	0	0	0	0.0
Wright St.	11/10/2024		07:54	0-2	.000	0-2	.000	0-0	.000	0	1	1	1.0	1	0	0	0	0	0.0	
Southeast Mo. St.	11/14/2024		18:46	3-5	.600	3-4	.750	0-0	.000	0	1	1	1.0	2	0	3	0	0	9	3.0
at Lindenwood	11/18/2024		24:14	0-2	.000	0-2	.000	0-0	.000	0	2	2	1.3	3	0	2	0	0	0	2.3
at Lipscomb	11/23/2024	*	29:33	4-8	.500	2-6	.333	0-0	.000	0	2	2	1.4	3	1	2	0	0	10	3.8
vs Nicholls	11/29/2024	*	31:56	2-6	.333	2-6	.333	2-2	1.000	0	3	3	1.7	1	2	0	0	1	8	4.5
vs Delaware	11/30/2024	*	15:30	1-6	.167	1-5	.200	0-0	.000	0	1	1	1.6	0	0	1	0	0	3	4.3
SIUE	12/08/2024	*	18:46	0-2	.000	0-2	.000	0-0	.000	0	1	1	1.5	2	1	2	0	1	0	3.8
<b>Totals</b>			<b>4 164:02</b>	<b>10-34</b>	<b>.294</b>	<b>8-29</b>	<b>.276</b>	<b>2-2</b>	<b>1.000</b>	<b>0</b>	<b>12</b>	<b>12</b>	<b>1.5</b>	<b>13</b>	<b>4</b>	<b>11</b>	<b>0</b>	<b>2</b>	<b>30</b>	<b>3.8</b>

### Player Averages

Games Played	Minutes/game	Points/game	FG Pct	3FG Pct	FT Pct	Rebounds/game	Assists/game	Turnovers/game	Assist/Turnover ratio	Steals/game	Blocks/game
8	20.5	3.8	29.4	27.6	100.0	1.5	0.5	1.4	0.4	0.3	0.0

### Career Stats

				Field Goals		3-Point		F-Throws		Rebounds				Scoring						
SEASON	TEAM	GP-GS	MIN/AVG	FG-FGA	FG%	3FG-3FGA	3FG%	FT-FTA	FT%	OFF	DEF	TOT	AVG	PF-FO	A	TO	BLK	STL	PTS	AVG
2024-25	Evans	8-4	164/20.5	10-34	.294	8-29	.276	2-2	1.000	0	12	12	1.5	13-0	4	11	0	2	30	3.8
<b>TOTAL</b>		<b>8-4</b>	<b>164/20.5</b>	<b>10-34</b>	<b>.294</b>	<b>8-29</b>	<b>.276</b>	<b>2-2</b>	<b>1.000</b>	<b>0</b>	<b>12</b>	<b>12</b>	<b>1.5</b>	<b>13-0</b>	<b>4</b>	<b>11</b>	<b>0</b>	<b>2</b>	<b>30</b>	<b>3.8</b>

#FORTHEACES



# Tené Smith

SOPHOMORE - GUARD - 5-6

BRAMPTON, ONTARIO - KINGS CHRISTIAN COLLEGE



## ACES INFO

### 2023-24

- Appeared in 32 games with one start for the Purple Aces for an average of 19.1 minutes a game.
- Averaged 3.2 points, 0.8 rebounds, 1.3 assists, and 0.5 steals a game as a freshman.
- Was the Aces driving factor in their triple overtime win against Chicago State with a career high three rebounds, 10 field goal attempts, two made three pointers, and five made free throws.
- Set a career-high in points in the Aces win against Southern Illinois on February 15th with 16 points.

### PREP

- Spent the past year playing for the Kings Christian Collegiate women's basketball team. • Averaged shooting totals in the double-digits, including a career best 17-point performance against Crestwood Preparatory College.
- Played club basketball with the Brampton Lady Warriors. During the regular season, the Lady Warriors had a perfect record of 57-0 under Head Coach Keith Johnson.
- Member of Team Canada for the Jr. NBA Global Tournament. With the Canadian Jr. NBA team, she participated in the tournament finals and was recognized as an International Champion and a World Champion Silver Medalist.
- A member of Team Ontario with Canada Basketball. She was named a Canada Basketball Targeted Athlete, a program that identifies top Canadian athletes that receive additional training and development opportunities.

## GAME-BY-GAME

### 2023-24 Season Highs

Points: 16, Southern Illinois (2/15/24)  
 Rebounds: 3, Three Times  
 Assists: 5 at SIUE (11/12/23)  
 Steals: 3 at UT Martin (12/2/23)  
 Blocks:  
 FG made: 5, Southern Illinois (2/15/24)  
 FG attempts: 10, Twice  
 3FG Made: 2, Twice  
 3FG attempts: 5 at Chicago State (11/26/23)  
 FT made: 5, Twice  
 FT attempts: 6 at Chicago State (11/26/23)

### Career Highs

Points: 16, Southern Illinois (2/15/24)  
 Rebounds: 3, Three Times  
 Assists: 5 at SIUE (11/12/23)  
 Steals: 3 at UT Martin (12/2/23)  
 Blocks:  
 FG made: 5, Southern Illinois (2/15/24)  
 FG attempts: 10, Twice  
 3FG Made: 2, Twice  
 3FG attempts: 5 at Chicago State (11/26/23)  
 FT made: 5, Twice  
 FT attempts: 6 at Chicago State (11/26/23)

### Career Stats

SEASON	TEAM	GP-GS	MIN/AVG	Field Goals			3-Point		F-Throws		Rebounds				Scoring					
				FG-FGA	FG%	3FG-3FGA	3FG%	FT-FTA	FT%	OFF	DEF	TOT	AVG	PF-FO	A	TO	BLK	STL	PTS	AVG
2023-24	Evans	32-1	611/19.1	31-124	.250	13-62	.210	26-42	.619	7	18	25	0.8	50-3	43	63	0	15	101	3.2
<b>TOTAL</b>		<b>32-1</b>	<b>611/19.1</b>	<b>31-124</b>	<b>.250</b>	<b>13-62</b>	<b>.210</b>	<b>26-42</b>	<b>.619</b>	<b>7</b>	<b>18</b>	<b>25</b>	<b>0.8</b>	<b>50-3</b>	<b>43</b>	<b>63</b>	<b>0</b>	<b>15</b>	<b>101</b>	<b>3.2</b>

#FORTHEACES

# Madlena Gerke

**JUNIOR- GUARD - 5-10**

**RIGA, LATVIA - EASTERN FLORIDA COLLEGE**



**13**

## ACES INFO

### 2023-24

- Appeared in 22 games with 12 starts for the Purple Aces averaging 20.1 minutes a game.
- Averaged 4.5 points, 2.7 rebounds, 1.1 assists, and 0.6 steals a game.
- Had a season-high game for the Aces against Valparaiso on January 28th with 12 points, six rebounds, six made free throws, and three steals.
- Missed the final month of the season with a concussion.

### PRIOR TO UE

- Spent one season at Eastern Florida College with a 33-2 record on their way to the Region VIII Championship.
- Recorded an average of 5.9 points per game while seeing just over 13 minutes of action in 31 games, while registering 2.5 rebounds and 1.4 assists per contest.
- Spent her freshman season in 2021-22, at Florida Southern College where she appeared in 27 games while making two starts.
- Averaged 16.4 minutes per game with 4.3 points and 2.3 rebounds for the Mocs.

### PREP

- Her senior campaign in Latvia saw her record 8.1 points, 6.4 rebounds and 1.2 assists per contest.
- Three-time Latvian Regular Championship Most Valuable Player.
- Earned another team MVP honor in the "Semionova's Cup", which is an international basketball tournament.
- A 2-time All-Star in the Latvian Regular Championship earned 12 All-Star honors in the European Girl Basketball League (EGBL).

## 2024-25 Season Highs

Points: 1, vs. Delaware (11/30/24)  
 Rebounds: 4, vs. Delaware (11/30/24)  
 Assists:  
 Steals:  
 Blocks:  
 FG made:  
 FG attempts: 2 vs. Delaware (11/30/24)  
 3FG Made:  
 3FG attempts:  
 FT made: 1, vs. Delaware (11/30/24)  
 FT attempts: 2, vs. Delaware (11/30/24)

## Career Highs

Points: 14 at Florida Tech (12/1/21)  
 Rebounds: 6, Five Times  
 Assists: 5, Twice  
 Steals: 4 vs. Davenport (12/18/21)  
 Blocks: 2, Three Times  
 FG made: 4, Three Times  
 FG attempts: 11 at Palm Beach Atl. (1/29/22)  
 3FG Made: 3 at Florida Tech (12/1/21)  
 3FG attempts: 5 at SEMO (12/21/23)  
 FT made: 6, Valparaiso (1/28/24)  
 FT attempts: 7, Twice

## GAME-BY-GAME



2024-25 Evansville Women's Basketball  
 Individual Game-by-Game  
 All games

Page 7/12  
 as of Dec 12, 2024

### #13 GERKE, Madlena

Opponent	Date	GS	MIN	Total FG-FGA	PCT	3FG-3FGA	PCT	Free throws FT-FTA	PCT	Rebounds OFF DEF TOT	AVG	PF	A	TO	BLK	STL	PTS	AVG		
vs Nicholls	11/29/2024		04:06	0-1	.000	0-0	.000	0-0	.000	0	0	0	0	0	0	0	0	0	0.0	
vs Delaware	11/30/2024		09:01	0-2	.000	0-0	.000	1-2	.500	1	3	4	2.0	1	0	1	0	0	1	0.5
<b>Totals</b>		<b>0</b>	<b>13:07</b>	<b>0-3</b>	<b>.000</b>	<b>0-0</b>	<b>.000</b>	<b>1-2</b>	<b>.500</b>	<b>1</b>	<b>3</b>	<b>4</b>	<b>2.0</b>	<b>1</b>	<b>0</b>	<b>1</b>	<b>0</b>	<b>0</b>	<b>1</b>	<b>0.5</b>

### Player Averages

Games Played	Minutes/game	Points/game	FG Pct	3FG Pct	FT Pct	Rebounds/game	Assists/game	Turnovers/game	Assist/Turnover ratio	Steals/game	Blocks/game
2	6.6	0.5	0.0	0.0	50.0	2.0	0.0	0.5		0.0	0.0

## Career Stats

SEASON	TEAM	GP-GS	MIN/AVG	FG-FGA	FG%	3FG-3FGA	3FG%	FT-FTA	FT%	OFF	DEF	TOT	AVG	PF-FO	A	TO	BLK	STL	PTS	AVG
2021-22	FSC	27-2	444/16.4	39-110	.355	12-39	.308	26-47	.553	17	46	63	2.3	54-4	20	24	10	29	116	4.3
2023-24	Evans	22-12	445/20.2	32-102	.314	7-36	.194	28-44	.636	12	47	59	2.7	43-0	23	34	10	13	99	4.5
2024-25	Evans	2-0	13/6.6	0-3	.000	0-0	.000	1-2	.500	1	3	4	2.0	1-0	0	1	0	0	1	0.5
<b>TOTAL FOR Evans</b>		<b>24-12</b>	<b>458/19.1</b>	<b>32-105</b>	<b>.305</b>	<b>7-36</b>	<b>.194</b>	<b>29-46</b>	<b>.630</b>	<b>13</b>	<b>50</b>	<b>63</b>	<b>2.6</b>	<b>44-0</b>	<b>23</b>	<b>35</b>	<b>10</b>	<b>13</b>	<b>100</b>	<b>4.2</b>

#FORTHEACES

# Elle Snyder

FRESHMAN - GUARD/FORWARD - 5-9  
LATROBE, PENN. - GREATER LATROBE HS



## ACES INFO

### PREP

- Played four years as a varsity starter at Greater Latrobe HS.
- With the Wildcats Snyder appeared in three straight WPIAL 5A Girl's Basketball playoffs.
- Named a 5A Jr. All-Star and a WPIAL All-State Third Team in her final season with the Wildcats.
- Earned All-Sectional and All-Conference honors as a senior.
- Broke Latrobe's program record for most double-doubles in a season with 16 and scored over 1,000 points in her career with the Wildcats. Became only the 7th player at Latrobe to eclipse over 1,000 points.

## GAME-BY-GAME

### 2024-25 Season Highs

Points:  
Rebounds:  
Assists:  
Steals:  
Blocks:  
FG made:  
FG attempts:  
3FG Made:  
3FG attempts:  
FT made:  
FT attempts:

### Career Highs

Points: 6, vs. SIUE (12/8/24)  
Rebounds: 5, vs. SIUE (12/8/24)  
Assists: 1, vs. SIUE (12/8/24)  
Steals:  
Blocks:  
FG made: 2, vs. SIUE (12/8/24)  
FG attempts: 4, vs. SIUE (12/8/24)  
3FG Made: 2, vs. SIUE (12/8/24)  
3FG attempts: 4, vs. SIUE (12/8/24)  
FT made:  
FT attempts:



2024-25 Evansville Women's Basketball  
Individual Game-by-Game  
All games

Page 8/12  
as of Dec 12, 2024

### #15 SNYDER, Elle

Opponent	Date	GS	MIN	Total		3-Pointers		Free throws		Rebounds					PF	A	TO	BLK	STL	PTS	AVG
				FG-FGA	PCT	3FG-3FGA	PCT	FT-FTA	PCT	OFF	DEF	TOT	AVG								
SIUE	12/08/2024		16:32	2-4	.500	2-4	.500	0-0	.000	1	4	5	5.0	1	1	0	0	0	0	6	6.0
<b>Totals</b>		<b>0</b>	<b>16:32</b>	<b>2-4</b>	<b>.500</b>	<b>2-4</b>	<b>.500</b>	<b>0-0</b>	<b>.000</b>	<b>1</b>	<b>4</b>	<b>5</b>	<b>5.0</b>	<b>1</b>	<b>1</b>	<b>0</b>	<b>0</b>	<b>0</b>	<b>0</b>	<b>6</b>	<b>6.0</b>

### Player Averages

Games Played	Minutes/game	Points/game	FG Pct	3FG Pct	FT Pct	Rebounds/game	Assists/game	Turnovers/game	Assist/Turnover ratio	Steals/game	Blocks/game
1	16.5	6.0	50.0	50.0	0.0	5.0	1.0	0.0	1.0	0.0	0.0

### Career Stats

SEASON	TEAM	GP-GS	MIN/AVG	Field Goals		3-Point		F-Throws		Rebounds				Scoring							
				FG-FGA	FG%	3FG-3FGA	3FG%	FT-FTA	FT%	OFF	DEF	TOT	AVG	PF-FO	A	TO	BLK	STL	PTS	AVG	
2024-25	Evans	1-0	17/16.5	2-4	.500	2-4	.500	0-0	.000	1	4	5	5.0	1-0	1	0	0	0	0	6	6.0
<b>TOTAL</b>		<b>1-0</b>	<b>17/16.5</b>	<b>2-4</b>	<b>.500</b>	<b>2-4</b>	<b>.500</b>	<b>0-0</b>	<b>.000</b>	<b>1</b>	<b>4</b>	<b>5</b>	<b>5.0</b>	<b>1-0</b>	<b>1</b>	<b>0</b>	<b>0</b>	<b>0</b>	<b>0</b>	<b>6</b>	<b>6.0</b>

#FOR THE ACES

# Kylee Norkus

FRESHMAN - GUARD - 5-10  
NAPERVILLE, ILL. - NEUQUA VALLEY HS



20

## ACES INFO

### PREP

- Spent four years as a starter for the Neuqua Valley Wildcats.
- Named All-Conference and All-Area for three straight years while being named to the IBCA All-State Third Team in her senior season.
- Named to the IBCA All-State team in 2022 for her help in leading Neuqua Valley to a Regional Championship.
- Averaged 15.2 points, 7 rebounds, 2.7 steals, and 2.1 assists per game in her senior season with the Wildcats.
- Recognized for her work in the classroom as a four time selection to the Dupage Valley Conference All-Academic Team.
- Played on the AAU circuit with Midwest Elite Meanstreets as part of the Nike Girls EYBL league.

## 2024-25 Season Highs

Points: 12, Twice  
Rebounds: 7, Twice  
Assists: 3 vs. SEMO (11/14/24)  
Steals: 2 vs. Wright State (11/10/24)  
Blocks:  
FG made: 5 vs. Wright State (11/10/24)  
FG attempts: 8 vs. Wright State (11/10/24)  
3FG Made: 1 vs. SEMO (11/14/24)  
3FG attempts: 2, Twice  
FT made: 5 vs. SEMO (11/14/24)  
FT attempts: 8 vs. SEMO (11/14/24)

## Career Highs

Points: 12, Twice  
Rebounds: 7, Twice  
Assists: 3 vs. SEMO (11/14/24)  
Steals: 2 vs. Wright State (11/10/24)  
Blocks:  
FG made: 5 vs. Wright State (11/10/24)  
FG attempts: 8 vs. Wright State (11/10/24)  
3FG Made: 1 vs. SEMO (11/14/24)  
3FG attempts: 2, Twice  
FT made: 5 vs. SEMO (11/14/24)  
FT attempts: 8 vs. SEMO (11/14/24)

## Career Stats

SEASON	TEAM	GP-GS	MIN/AVG	Field Goals		3-Point		F-Throws		Rebounds				Scoring							
				FG-FGA	FG%	3FG-3FGA	3FG%	FT-FTA	FT%	OFF	DEF	TOT	AVG	PF	FO	A	TO	BLK	STL	PTS	AVG
2024-25	Evans	4-4	120/29.9	14-24	.583	1-5	.200	11-17	.647	5	17	22	5.5	5-0	7	14	0	4	40	10.0	
<b>TOTAL</b>		<b>4-4</b>	<b>120/29.9</b>	<b>14-24</b>	<b>.583</b>	<b>1-5</b>	<b>.200</b>	<b>11-17</b>	<b>.647</b>	<b>5</b>	<b>17</b>	<b>22</b>	<b>5.5</b>	<b>5-0</b>	<b>7</b>	<b>14</b>	<b>0</b>	<b>4</b>	<b>40</b>	<b>10.0</b>	

## GAME-BY-GAME



2024-25 Evansville Women's Basketball  
Individual Game-by-Game  
All games

Page 7/10  
as of Nov 22, 2024

### #20 NORKUS, Kylee

Opponent	Date	GS	MIN	Total FG-FGA	PCT	3FG-3FGA	PCT	Free throws FT-FTA	PCT	Rebounds OFF	DEF	TOT	AVG	PF	A	TO	BLK	STL	PTS	AVG
at IU Indy	11/05/2024	*	32:53	4-7	.571	0-0	.000	3-5	.600	3	1	4	4.0	1	2	4	0	1	11	11.0
Wright St.	11/10/2024	*	39:15	5-8	.625	0-1	.000	2-2	1.000	2	5	7	5.5	1	1	6	0	2	12	11.5
Southeast Mo. St.	11/14/2024	*	37:24	3-5	.600	1-2	.500	5-8	.625	0	7	7	6.0	3	3	3	0	0	12	11.7
at Lindenwood	11/18/2024	*	10:13	2-4	.500	0-2	.000	1-2	.500	0	4	4	5.5	0	1	1	0	1	5	10.0
<b>Totals</b>			<b>4:119:45</b>	<b>14-24</b>	<b>.583</b>	<b>1-5</b>	<b>.200</b>	<b>11-17</b>	<b>.647</b>	<b>5</b>	<b>17</b>	<b>22</b>	<b>5.5</b>	<b>5</b>	<b>7</b>	<b>14</b>	<b>0</b>	<b>4</b>	<b>40</b>	<b>10.0</b>

### Player Averages

Games Played	Minutes/game	Points/game	FG Pct	3FG Pct	FT Pct	Rebounds/game	Assists/game	Turnovers/game	Assist/Turnover ratio	Steals/game	Blocks/game
<b>4</b>	<b>29.9</b>	<b>10.0</b>	<b>58.3</b>	<b>20.0</b>	<b>64.7</b>	<b>5.5</b>	<b>1.8</b>	<b>3.5</b>	<b>0.5</b>	<b>1.0</b>	<b>0.0</b>

#FOR THE ACES

# Anica Skrivan

**JUNIOR - FORWARD - 6-1**

**TREBINJE, BOSNIA & HERZEGOVINA - NE OKLAHOMA A&M**



## ACES INFO

### 2023-24

- Appeared in five games for the Aces averaging just under five minutes a game.
- Averaged 3 points and 1.2 rebounds a game over the season.
- Had a career-high game at UT Martin with 10 points and five made field goals.

### Prior to UE

- Spent two years at Northeast Oklahoma A&M
- Played in 26 games, making nine starts for the Golden Norsemen, while averaging nearly eight points per game and five boards.
- Notched double-figures in 11 games, including a pair of double-doubles.

### PREP

- Competed on the Bosnian National Team

## GAME-BY-GAME

### 2024-25 Season Highs

- Points: 2, Twice
- Rebounds: 3, Three times
- Assists: 1, vs. SIUE (12/8/24)
- Steals: 1 vs. SEMO (11/14/24)
- Blocks: 1, Twice
- FG made: 1, Four times
- FG attempts: 2, Twice
- 3FG Made: 1, Redlands CC (2/27/23)
- 3FG attempts: 1, Five Times
- FT made: 2 vs. SEMO (11/14/24)
- FT attempts: 2, Twice

### Career Highs

- Points: 17 vs. Murray State College (2/4/23)
- Rebounds: 13 vs Northern Oklahoma College - Enid (2/13/23)
- Assists: 5 at Redlands CC (1/27/23)
- Steals: 1, Four times
- Blocks: 3, Redlands CC (2/27/23)
- FG made: 8, Murray State College (2/4/23)
- FG attempts: 12 Murray State College (2/4/23)
- 3FG Made: 1, Redlands CC (2/27/23)
- 3FG attempts: 1, Five Times
- FT made: 3, Redlands CC (2/27/23)
- FT attempts: 4, Twice

### Career Stats

SEASON	TEAM	GP-GS	MIN/AVG	Field Goals		3-Point		F-Throws		Rebounds				Scoring						
				FG-FGA	FG%	3FG-3FGA	3FG%	FT-FTA	FT%	OFF	DEF	TOT	AVG	PF-FO	A	TO	BLK	STL	PTS	AVG
2023-24	Evans	5-0	24/4.8	7-11	.636	0-0	.000	1-3	.333	1	5	6	1.2	0-0	0	0	0	0	15	3.0
2024-25	Evans	7-0	48/6.9	4-8	.500	0-0	.000	3-4	.750	5	8	13	1.9	11-0	1	6	2	1	11	1.6
<b>TOTAL</b>		<b>12-0</b>	<b>72/6.0</b>	<b>11-19</b>	<b>.579</b>	<b>0-0</b>	<b>.000</b>	<b>4-7</b>	<b>.571</b>	<b>6</b>	<b>13</b>	<b>19</b>	<b>1.6</b>	<b>11-0</b>	<b>1</b>	<b>6</b>	<b>2</b>	<b>1</b>	<b>26</b>	<b>2.2</b>



2024-25 Evansville Women's Basketball  
Individual Game-by-Game  
All games

Page 10/12  
as of Dec 12, 2024

### #21 SKRIVAN, Anica

Opponent	Date	GS	MIN	Total		3-Pointers		Free throws		Rebounds			PF	A	TO	BLK	STL	PTS	AVG	
				FG-FGA	PCT	3FG-3FGA	PCT	FT-FTA	PCT	OFF	DEF	TOT								AVG
at IU Indy	11/05/2024		08:41	1-2	.500	0-0	.000	0-0	.000	1	1	2	2.0	1	0	1	0	0	2	2.0
Wright St.	11/10/2024		01:41	1-1	1.000	0-0	.000	0-0	.000	0	0	0	1.0	0	0	1	0	0	2	2.0
Southeast Mo. St.	11/14/2024		08:51	0-1	.000	0-0	.000	2-2	1.000	1	2	3	1.7	3	0	3	1	1	2	2.0
at Lindenwood	11/18/2024		06:10	0-0	.000	0-0	.000	0-0	.000	0	0	0	1.3	2	0	1	0	0	0	1.5
vs Nicholls	11/29/2024		04:57	0-1	.000	0-0	.000	1-2	.500	0	2	2	1.4	1	0	0	0	0	1	1.4
vs Delaware	11/30/2024		09:29	1-2	.500	0-0	.000	0-0	.000	2	1	3	1.7	0	0	0	0	0	2	1.5
SIUE	12/08/2024		08:18	1-1	1.000	0-0	.000	0-0	.000	1	2	3	1.9	4	1	0	1	0	2	1.6
<b>Totals</b>			<b>0 48:07</b>	<b>4-8</b>	<b>.500</b>	<b>0-0</b>	<b>.000</b>	<b>3-4</b>	<b>.750</b>	<b>5</b>	<b>8</b>	<b>13</b>	<b>1.9</b>	<b>11</b>	<b>1</b>	<b>6</b>	<b>2</b>	<b>1</b>	<b>11</b>	<b>1.6</b>

### Player Averages

Games Played	Minutes/game	Points/game	FG Pct	3FG Pct	FT Pct	Rebounds/game	Assists/game	Turnovers/game	Assist/Turnover ratio	Steals/game	Blocks/game
7	6.9	1.6	50.0	0.0	75.0	1.9	0.1	0.9	0.2	0.1	0.3

#FOR THE ACES

# Maggie Hartwig

**SOPHOMORE - FORWARD - 6-1**  
**SAUK CITY, WISC. - SAUK PRAIRIE HS**



## ACES INFO

- 2023-24**
- Was a standout forward for the Aces in her freshman season, appearing in 31 games with 27 starts for an average of 29 minutes a game.
  - Averaged 11.5 points, 7.5 rebounds, 0.9 assists, and 0.6 blocks a game in her first year as an Ace.
  - Named MVC Freshman of the Week three times on November 27th, 2023; December 18th, 2023; and February 20th, 2024.
  - Set a career-high in points in only her second game with UE at SIUE with 23 points. Also matched her career-high at Missouri State on January 19th.
  - Had a career high in rebounds, field goal attempts, and free throws made at Chicago State on November 26th.

- PREP**
- Spent four years playing for Sauk Prairie High School, averaging 19 points and 12 rebounds in the 2022-23 season.
  - Named to the Badger North All-Conference First Team in 2021-22 and 2022-23. Earned Second-Team All-State honors in 2021-22 while being named to First-Team All-State in 2022-23 by the WBCA for Division 2 teams in Wisconsin.
  - Named to the AP All-State Fourth-Team in 2022-23 as well.
  - Was a two sport athlete in high school playing volleyball along with basketball.
  - Parents both played collegiate athletics at SIUE.

## GAME-BY-GAME



2024-25 Evansville Women's Basketball  
 Individual Game-by-Game  
 All games Page 11/12  
as of Dec 12, 2024

**#24 HARTWIG, Maggie**

Opponent	Date	GS	MIN	Total		3-Pointers		Free throws		Rebounds				PF	A	TO	BLK	STL	PTS	AVG	
				FG-FGA	PCT	3FG-3FGA	PCT	FT-FTA	PCT	OFF	DEF	TOT	AVG								
at IU Indy	11/05/2024	*	34:06	8-15	.533	2-3	.667	3-5	.600	3	6	9	9.0	3	0	3	0	0	21	21.0	
Wright St.	11/10/2024	*	32:25	9-23	.391	3-6	.500	3-4	.750	7	7	14	11.5	5	0	6	0	0	24	22.5	
Southeast Mo. St.	11/14/2024	*	36:11	4-14	.286	2-5	.400	7-8	.875	5	15	20	14.3	1	1	8	0	2	17	20.7	
at Lindenwood	11/18/2024	*	36:08	6-14	.429	1-5	.200	0-0	.000	1	7	8	12.8	3	0	6	0	3	13	18.8	
at Lipscomb	11/23/2024	*	37:08	10-19	.526	3-5	.600	1-1	1.000	1	5	6	11.4	4	1	2	2	1	24	19.8	
vs Nicholls	11/29/2024	*	31:35	4-14	.286	0-4	.000	4-4	1.000	2	5	7	10.7	3	1	2	4	0	12	18.5	
vs Delaware	11/30/2024	*	30:39	3-12	.250	1-5	.200	4-4	1.000	0	5	5	9.9	4	1	3	2	2	11	17.4	
SIUE	12/08/2024	*	27:29	6-13	.462	1-3	.333	11-14	.786	1	5	6	9.4	3	1	4	0	0	24	18.3	
<b>Totals</b>			<b>8</b>	<b>265:40</b>	<b>50-124</b>	<b>.403</b>	<b>13-36</b>	<b>.361</b>	<b>33-40</b>	<b>.825</b>	<b>20</b>	<b>55</b>	<b>75</b>	<b>9.4</b>	<b>26</b>	<b>5</b>	<b>34</b>	<b>8</b>	<b>8</b>	<b>146</b>	<b>18.3</b>

**Player Averages**

Games Played	Minutes/game	Points/game	FG Pct	3FG Pct	FT Pct	Rebounds/game	Assists/game	Turnovers/game	Assist/Turnover ratio	Steals/game	Blocks/game
8	33.2	18.3	40.3	36.1	82.5	9.4	0.6	4.3	0.1	1.0	1.0

## 2024-25 Season Highs

- Points: 24, Three times
- Rebounds: 20 vs. SEMO (11/14/24)
- Assists: 1, Five times
- Steals:
- Blocks: 4, vs. Nicholls (11/29/24)
- FG made: 10 at Lipscomb (11/23/24)
- FG attempts: 23 vs. Wright State (11/10/24)
- 3FG Made: 3, Twice
- 3FG attempts: 6 vs. Wright State (11/10/24)
- FT made: 11, vs. SIUE (12/8/24)
- FT attempts: 14, vs. SIUE (12/8/24)

## Career Highs

- Points: 24, Three times
- Rebounds: 20 vs. SEMO (11/14/24)
- Assists: 4, Murray State (1/14/24)
- Steals: 3 at Lindenwood (11/18/24)
- Blocks: 4, Three times
- FG made: 10 at Lipscomb (11/23/24)
- FG attempts: 23 vs. Wright State (11/10/24)
- 3FG Made: 4, at SIUE (11/12/23)
- 3FG attempts: 6, Six Times
- FT made: 11, vs. SIUE (12/8/24)
- FT attempts: 14, vs. SIUE (12/8/24)

## Career Stats

SEASON	TEAM	GP-GS	MIN/AVG	Field Goals		3-Point		F-Throws		Rebounds				Scoring						
				FG-FGA	FG%	3FG-3FGA	3FG%	FT-FTA	FT%	OFF	DEF	TOT	AVG	PF-FO	A	TO	BLK	STL	PTS	AVG
2023-24	Evans	31-27	900/29.0	127-330	.385	30-109	.275	73-93	.785	56	176	232	7.5	90-3	28	85	20	18	357	11.5
2024-25	Evans	8-8	266/33.2	50-124	.403	13-36	.361	33-40	.825	20	55	75	9.4	26-1	5	34	8	8	146	18.3
<b>TOTAL</b>		<b>39-35</b>	<b>1165/29.9</b>	<b>177-454</b>	<b>.390</b>	<b>43-145</b>	<b>.297</b>	<b>106-133</b>	<b>.797</b>	<b>76</b>	<b>231</b>	<b>307</b>	<b>7.9</b>	<b>116-4</b>	<b>33</b>	<b>119</b>	<b>28</b>	<b>26</b>	<b>503</b>	<b>12.9</b>

#FOR THE ACES

# Claudia Clement

SOPHOMORE - FORWARD - 6-3

BARCELONA, SPAIN - WINTHROP UNIVERSITY



25

## ACES INFO

### PRIOR TO UE

- Spent one season at Winthrop University.
- Appeared in 19 games for the Eagles averaging 15.3 minutes, 1.1 points, and 0.8 rebounds a game.

### PREP

- Spent two years with Barça in the Catalan Basketball Federation as part of the program's junior team.
- Spent time on the Spain Youth National team in 2021.
- Has a background in ballet along with her time in basketball.

## GAME-BY-GAME



2024-25 Evansville Women's Basketball  
Individual Game-by-Game  
All games

Page 12/12  
as of Dec 12, 2024

### #25 CLEMENT, Claudia

Opponent	Date	GS	MIN	Total		3-Pointers		Free throws		Rebounds			PF	A	TO	BLK	STL	PTS	AVG	
				FG-FGA	PCT	3FG-3FGA	PCT	FT-FTA	PCT	OFF	DEF	TOT								AVG
Wright St.	11/10/2024		17:23	0-2	.000	0-0	.000	0-0	.000	1	2	3	3.0	5	1	3	0	0	0	0.0
Southeast Mo. St.	11/14/2024		05:56	0-0	.000	0-0	.000	0-0	.000	0	0	0	1.5	0	0	0	0	1	0	0.0
at Lindenwood	11/18/2024		38:25	0-3	.000	0-0	.000	0-0	.000	1	5	6	3.0	3	2	0	2	0	0	0.0
at Lipscomb	11/23/2024		22:11	2-4	.500	0-0	.000	0-0	.000	1	4	5	3.5	3	2	1	0	0	4	1.0
vs Nicholls	11/29/2024		17:49	0-5	.000	0-0	.000	0-0	.000	1	2	3	3.4	0	0	1	1	2	0	0.8
vs Delaware	11/30/2024		22:07	1-4	.250	0-0	.000	0-0	.000	1	0	1	3.0	4	0	1	1	1	2	1.0
SIUE	12/08/2024		15:52	0-1	.000	0-0	.000	0-0	.000	2	1	3	3.0	5	1	2	3	0	0	0.9
<b>Totals</b>			<b>0 139:42</b>	<b>3-19</b>	<b>.158</b>	<b>0-0</b>	<b>.000</b>	<b>0-0</b>	<b>.000</b>	<b>7</b>	<b>14</b>	<b>21</b>	<b>3.0</b>	<b>20</b>	<b>6</b>	<b>8</b>	<b>7</b>	<b>4</b>	<b>6</b>	<b>0.9</b>

### Player Averages

Games Played	Minutes/game	Points/game	FG Pct	3FG Pct	FT Pct	Rebounds/game	Assists/game	Turnovers/game	Assist/Turnover ratio	Steals/game	Blocks/game
7	20.0	0.9	15.8	0.0	0.0	3.0	0.9	1.1	0.8	0.6	1.0

## 2024-25 Season Highs

Points: 4 at Lipscomb (11/23/24)  
Rebounds: 6 at Lindenwood (11/18/24)  
Assists: 2, Twice  
Steals: 2 vs. Nicholls (11/29/24)  
Blocks: 3 vs. SIUE (12/8/24)  
FG made: 2 at Lipscomb (11/23/24)  
FG attempts: 3 at Lindenwood (11/18/24)  
3FG Made:  
3FG attempts:  
FT made:  
FT attempts:

## Career Highs

Points: 4, Four Times  
Rebounds: 6, Twice  
Assists: 2, Twice  
Steals: 1, Three Times  
iBlocks: 4 vs. SIUE (12/8/24)  
FG made: 2, Four Times  
FG attempts: 4 at North Florida (12/20/23)  
3FG Made:  
3FG attempts:  
FT made: 1 at South Carolina St. (11/18/23)  
FT attempts: 2, Twice

## Career Stats

SEASON	TEAM	GP-GS	MIN/AVG	Field Goals		3-Point		F-Throws		Rebounds				Scoring						
				FG-FGA	FG%	3FG-3FGA	3FG%	FT-FTA	FT%	OFF	DEF	TOT	AVG	PF-FO	A	TO	BLK	STL	PTS	AVG
2023-24	Win	19-0	140/7.4	10-28	.357	0-0	.000	1-4	.250	4	11	15	0.8	28-0	2	12	0	2	21	1.1
2024-25	Evans	7-0	140/20.0	3-19	.158	0-0	.000	0-0	.000	7	14	21	3.0	20-2	6	8	7	4	6	0.9
<b>TOTAL FOR Evans</b>		<b>7-0</b>	<b>140/20.0</b>	<b>3-19</b>	<b>.158</b>	<b>0-0</b>	<b>.000</b>	<b>0-0</b>	<b>.000</b>	<b>7</b>	<b>14</b>	<b>21</b>	<b>3.0</b>	<b>20-2</b>	<b>6</b>	<b>8</b>	<b>7</b>	<b>4</b>	<b>6</b>	<b>0.9</b>

#FORTHEACES

# Logan Luebbers Palmer

FRESHMAN - GUARD - 5-9  
UNION, KY. - RANDALL K. COOPER HS



## ACES INFO

### PREP

- Was a four-year starter at Randall K. Cooper High School.
- Helped the Jaguars make back-to-back runs to the Kentucky State Tournament Final Four in 2023 and 2024 where they fell in the semifinals.
- Named All-State, All-Region, and All-Conference in her senior season with the Jaguars along with being named to the 2024 KHSAA All-Tournament Team.
- In her career Luebbers Palmer scored over 1,600 points, had over 600 rebounds, and 200+ steals in four years. Her career point numbers were good for 3rd all time at Cooper and her career rebound numbers were good for fourth all-time.
- Was a consistent starter in back-to-back region titles for Cooper.
- Named to the District All-Tournament Team and an All-State Honorable Mention as a junior for the Jaguars.

## GAME-BY-GAME

### 2024-25 Season Highs

Points:  
Rebounds:  
Assists:  
Steals:  
Blocks:  
FG made:  
FG attempts:  
3FG Made:  
3FG attempts:  
FT made:  
FT attempts:

### Career Highs

Points:  
Rebounds:  
Assists:  
Steals:  
iBlocks:  
FG made:  
FG attempts:  
3FG Made:  
3FG attempts:  
FT made:  
FT attempts:

### Career Stats

#FORTHEACES





Nov. 5, 2024 - The Jungle - Indianapolis, Ind.



Official Basketball Box Score - Final
Evansville at IU Indy
11/05/24 The Jungle, Indianapolis
2024-25 Women's Basketball

Game Time 09:00 PM
Game Duration: 1:28
Attendance: 762

Officials: Troy Windsor, Neil Entwistle, Mark Griesmer

Evansville - 76

Records: 9-4

Table with columns: NO. Name, Min, FG M-A, 3P M-A, FT M-A, Rebounds OR DR TOT, Fouls PF FD, TP, AS, TO, ST, Blocks BS BA +/-

Technical Fouls: NONE

Shooting By Period table with columns: 1st FG%, 3PT%, 2nd FG%, 3PT%, 3rd FG%, 3PT%, 4th FG%, 3PT%, GM FG%, 3PT%, FT%

Dead Ball Rebounds: 4, 0

IU Indy - 101

Records: 1-0

Table with columns: NO. Name, Min, FG M-A, 3P M-A, FT M-A, Rebounds OR DR TOT, Fouls PF FD, TP, AS, TO, ST, Blocks BS BA +/-

Technical Fouls: NONE

Shooting By Period table with columns: 1st FG%, 3PT%, 2nd FG%, 3PT%, 3rd FG%, 3PT%, 4th FG%, 3PT%, GM FG%, 3PT%, FT%

Dead Ball Rebounds: 4, 0

Summary statistics table with columns: Biggest lead, Best Shooting Run, Lead Changes, Times Tied, Time with Lead

Nov. 10, 2024 - Meeks Family Fieldhouse - Evansville,



Official Basketball Box Score - Final
Weight 65 at Evansville
11/10/24 Meeks Family Fieldhouse, Evansville
2024-25 Women's Basketball

Game Time 11:00 PM
Game Duration: 1:18
Attendance: 268

Officials: Holly Caldwell, Sherry Lee, Shere Denton

Weight 65 - 63

Records: 6-8

Table with columns: NO. Name, Min, FG M-A, 3P M-A, FT M-A, Rebounds OR DR TOT, Fouls PF FD, TP, AS, TO, ST, Blocks BS BA +/-

Technical Fouls: NONE

Shooting By Period table with columns: 1st FG%, 3PT%, 2nd FG%, 3PT%, 3rd FG%, 3PT%, 4th FG%, 3PT%, GM FG%, 3PT%, FT%

Dead Ball Rebounds: 2, 1

Evansville - 66

Records: 1-4

Table with columns: NO. Name, Min, FG M-A, 3P M-A, FT M-A, Rebounds OR DR TOT, Fouls PF FD, TP, AS, TO, ST, Blocks BS BA +/-

Technical Fouls: NONE

Shooting By Period table with columns: 1st FG%, 3PT%, 2nd FG%, 3PT%, 3rd FG%, 3PT%, 4th FG%, 3PT%, GM FG%, 3PT%, FT%

Dead Ball Rebounds: 4, 2

Summary statistics table with columns: Biggest lead, Best Shooting Run, Lead Changes, Times Tied, Time with Lead

Nov. 14, 2024 - Meeks Family Fieldhouse - Evansville,



Official Basketball Box Score - Final
Evansville at Lindenwood
11/14/24 Meeks Family Fieldhouse, Evansville
2024-25 Women's Basketball

Game Time 09:00 PM
Game Duration: 1:14
Attendance: 272

Officials: Jessica Fortner, Josh Hall, Jessyca Christopher

Evansville - 55

Records: 6-6

Table with columns: NO. Name, Min, FG M-A, 3P M-A, FT M-A, Rebounds OR DR TOT, Fouls PF FD, TP, AS, TO, ST, Blocks BS BA +/-

Technical Fouls: Bowen 3, 0:37

Shooting By Period table with columns: 1st FG%, 3PT%, 2nd FG%, 3PT%, 3rd FG%, 3PT%, 4th FG%, 3PT%, GM FG%, 3PT%, FT%

Dead Ball Rebounds: 4, 1

Evansville - 70

Records: 9-4

Table with columns: NO. Name, Min, FG M-A, 3P M-A, FT M-A, Rebounds OR DR TOT, Fouls PF FD, TP, AS, TO, ST, Blocks BS BA +/-

Technical Fouls: NONE

Shooting By Period table with columns: 1st FG%, 3PT%, 2nd FG%, 3PT%, 3rd FG%, 3PT%, 4th FG%, 3PT%, GM FG%, 3PT%, FT%

Dead Ball Rebounds: 4, 0

Summary statistics table with columns: Biggest lead, Best Shooting Run, Lead Changes, Times Tied, Time with Lead

Nov. 18, 2024 - Robert F. Hyland Arena - St. Charles, Mo.



Official Basketball Box Score - Final
Evansville at Lindenwood
11/18/24 Robert F. Hyland Arena, Saint Charles, Mo.
2024-25 Women's Basketball

Game Time 09:00 PM
Game Duration: 1:14
Attendance: 272

Officials: Nancy Urbala, Ed Colton, Rylee Mandy

Evansville - 66

Records: 2-2

Table with columns: NO. Name, Min, FG M-A, 3P M-A, FT M-A, Rebounds OR DR TOT, Fouls PF FD, TP, AS, TO, ST, Blocks BS BA +/-

Technical Fouls: NONE

Shooting By Period table with columns: 1st FG%, 3PT%, 2nd FG%, 3PT%, 3rd FG%, 3PT%, 4th FG%, 3PT%, GM FG%, 3PT%, FT%

Dead Ball Rebounds: 3, 2

Lindenwood - 71

Records: 9-4

Table with columns: NO. Name, Min, FG M-A, 3P M-A, FT M-A, Rebounds OR DR TOT, Fouls PF FD, TP, AS, TO, ST, Blocks BS BA +/-

Technical Fouls: NONE

Shooting By Period table with columns: 1st FG%, 3PT%, 2nd FG%, 3PT%, 3rd FG%, 3PT%, 4th FG%, 3PT%, GM FG%, 3PT%, FT%

Dead Ball Rebounds: 7, 4

Summary statistics table with columns: Biggest lead, Best Shooting Run, Lead Changes, Times Tied, Time with Lead

Aces 79

L 86

Nov.23, 2024 - Allen Arena - Nashville



Official Basketball Box Score - Final
Evansville at Lipscomb
11:00AM Allen Arena, Nashville
304-83 Women's Basketball

Game Time 12:00 PM
Game Duration 1:52
Attendance 387

Evansville - 79

Record: 9-4

Table with columns: NO. Name, Min, FG, 3P, FT, Rebounds, Fouls, TP, AS, TO, ST, Blocks, +/-

Opposite: Jordan Hill, Ange Howard, Cobi Galtier

Shooting By Period table with columns: 1st FG, 2nd FG, 3rd FG, 4th FG, FT, 3PT, GM FG, FT%

Technical Fouls: NONE

Dead Ball Rebounds: 1,0

Lipscomb - 86

Record: 9-4

Table with columns: NO. Name, Min, FG, 3P, FT, Rebounds, Fouls, TP, AS, TO, ST, Blocks, +/-

Shooting By Period table with columns: 1st FG, 2nd FG, 3rd FG, 4th FG, FT, 3PT, GM FG, FT%

Technical Fouls: NONE

Dead Ball Rebounds: 2,0

Summary table with columns: Biggest lead, UOE, LIP, Points from Turnovers, Best Scoring Run, Lead Changes, Times Tied, Time with Lead

Ace 50

N 63

Nov. 29, 2024 - Alario Center - New Orleans



304-83 Women's Basketball

Opposite: Douglas Wright, Antoina Cozart, Holly Johnson

Evansville - 88

Record: 9-4

Table with columns: NO. Name, Min, FG, 3P, FT, Rebounds, Fouls, TP, AS, TO, ST, Blocks, +/-

Shooting By Period table with columns: 1st FG, 2nd FG, 3rd FG, 4th FG, FT, 3PT, GM FG, FT%

Technical Fouls: NONE

Dead Ball Rebounds: 1,0

Neville - 65

Record: 4-2

Table with columns: NO. Name, Min, FG, 3P, FT, Rebounds, Fouls, TP, AS, TO, ST, Blocks, +/-

Shooting By Period table with columns: 1st FG, 2nd FG, 3rd FG, 4th FG, FT, 3PT, GM FG, FT%

Technical Fouls: NONE

Dead Ball Rebounds: 2,0

Summary table with columns: Biggest lead, UOE, NIC, Points from Turnovers, Best Scoring Run, Lead Changes, Times Tied, Time with Lead

65

LCE 54

Nov. 30, 2024 - Alario Center - New Orleans



Official Basketball Box Score - Final
Delaware at Evansville
1:00PM John A. Harris Event Center & Reynolds Field, Winston, LA
304-83 Women's Basketball

Game Time 2:45 PM
Game Duration 1:59
Attendance 139

Opposite: Bryan Galtier, Nova Norman, Amy Rosenzweig

Delaware - 65

Record: 3-4

Table with columns: NO. Name, Min, FG, 3P, FT, Rebounds, Fouls, TP, AS, TO, ST, Blocks, +/-

Shooting By Period table with columns: 1st FG, 2nd FG, 3rd FG, 4th FG, FT, 3PT, GM FG, FT%

Technical Fouls: NONE

Dead Ball Rebounds: 7,0

Evansville - 81

Record: 9-4

Table with columns: NO. Name, Min, FG, 3P, FT, Rebounds, Fouls, TP, AS, TO, ST, Blocks, +/-

Shooting By Period table with columns: 1st FG, 2nd FG, 3rd FG, 4th FG, FT, 3PT, GM FG, FT%

Technical Fouls: Coach 2nd 1:07

Dead Ball Rebounds: 3,0

Summary table with columns: Biggest lead, UD, UE, Points from Turnovers, Best Scoring Run, Lead Changes, Times Tied, Time with Lead

SIUE 74

Aces 87

Dec. 8, 2024 - Meeks Family Fieldhouse - Evansville



Official Basketball Box Score - Final
SIUE at Evansville
12:00PM Meeks Family Fieldhouse, Evansville
2024-25 Women's Basketball

Game Time: 1:00 P
Game Duration: 2:11
Attendance: 41

Opposite: Rachael Rayford, Shane Bennett, Jessica Fortin

SIUE - 74

Record: 1-7

Table with columns: NO. Name, Min, FG, 3P, FT, Rebounds, Fouls, TP, AS, TO, ST, Blocks, +/-

Shooting By Period table with columns: 1st FG, 2nd FG, 3rd FG, 4th FG, FT, 3PT, GM FG, FT%

Technical Fouls: Rodriguez 4th 4:35

Dead Ball Rebounds: 7, 2

Evansville - 87

Record: 3-6

Table with columns: NO. Name, Min, FG, 3P, FT, Rebounds, Fouls, TP, AS, TO, ST, Blocks, +/-

Shooting By Period table with columns: 1st FG, 2nd FG, 3rd FG, 4th FG, FT, 3PT, GM FG, FT%

Technical Fouls: Bench 4th 4:35

Dead Ball Rebounds: 7, 2

Summary table with columns: Biggest lead, SIUE, UE, Points from Turnovers, Best Scoring Run, Lead Changes, Times Tied, Time with Lead



Dec. 14, 2024 - Memorial Gymnasium - Nashville



Dec. 17, 2024 - Ford Center - Evansville, Ind.



Dec. 21, 2024 - Gentile Arena - Chicago



Dec. 29, 2024 - Ford Center - Evansville



**2024-25 Evansville Women's Basketball  
Extended Season Box Score  
All games**

**Game Records**

Record	Overall	Home	Away	Neutral
ALL GAMES	3-5	3-0	0-3	0-2
CONFERENCE	0-0	0-0	0-0	0-0
NON-CONFERENCE	3-5	3-0	0-3	0-2

**Team Box Score Extended**

No.	Player	Total			3-Point		F-Throw		Rebounds																		
		GP-GS	MIN	AVG	FG-FGA	FG%	3FG-3FGA	3FG%	FT-FTA	FT%	OFF	DEF	TOT	AVG	PF	DQ	A	A/G	TO	TO/G	A/TO	BLK	BLK/G	STL	STL/G	PTS	AVG
10	RUNNER, Camryn	8-8	273:02	34.1	35-99	.354	10-32	.313	77-95	.811	9	33	42	5.3	26	1	26	3.25	35	4.38	0.74	10	1.25	12	1.50	157	19.6
24	HARTWIG, Maggie	8-8	265:40	33.2	50-124	.403	13-36	.361	33-40	.825	20	55	75	9.4	26	1	5	0.63	34	4.25	0.15	8	1.00	8	1.00	146	18.3
5	PALOMO, Julia	8-8	273:03	34.1	35-71	.493	11-25	.440	9-12	.750	8	21	29	3.6	18	1	15	1.88	25	3.13	0.60	1	0.13	22	2.75	90	11.3
20	NORKUS, Kylee	4-4	119:45	29.9	14-24	.583	1-5	.200	11-17	.647	5	17	22	5.5	5	0	7	1.75	14	3.50	0.50	0	0.00	4	1.00	40	10.0
15	SNYDER, Elle	1-0	16:32	16.5	2-4	.500	2-4	.500	0-0	.000	1	4	5	5.0	1	0	1	1.00	0	0.00	1.00	0	0.00	0	0.00	6	6.0
4	DOZIER, Tamesha	8-8	178:57	22.4	16-34	.471	7-15	.467	4-6	.667	9	28	37	4.6	24	2	6	0.75	16	2.00	0.38	1	0.13	1	0.13	43	5.4
11	KREINHAGEN, Kaiden	8-4	164:02	20.5	10-34	.294	8-29	.276	2-2	1.000	0	12	12	1.5	13	0	4	0.50	11	1.38	0.36	0	0.00	2	0.25	30	3.8
1	KELLEY, Avery	8-0	131:19	16.4	6-29	.207	0-9	.000	8-10	.800	3	20	23	2.9	11	0	21	2.63	16	2.00	1.31	0	0.00	3	0.38	20	2.5
21	SKRIVAN, Anica	7-0	48:07	6.9	4-8	.500	0-0	.000	3-4	.750	5	8	13	1.9	11	0	1	0.14	6	0.86	0.17	2	0.29	1	0.14	11	1.6
25	CLEMENT, Claudia	7-0	139:42	20.0	3-19	.158	0-0	.000	0-0	.000	7	14	21	3.0	20	2	6	0.86	8	1.14	0.75	7	1.00	4	0.57	6	0.9
13	GERKE, Madlena	2-0	13:07	6.6	0-3	.000	0-0	.000	1-2	.500	1	3	4	2.0	1	0	0	0.00	1	0.50	0.00	0	0.00	0	0.00	1	0.5
0	HANNA, Mira	1-0	01:43	1.7	0-0	.000	0-0	.000	0-0	.000	0	0	0	0.0	0	0	0	0.00	0	0.00	0.00	0	0.00	0	0.00	0	0.0
<b>Total</b>		<b>8</b>	<b>1625</b>		<b>175-449</b>	<b>.390</b>	<b>52-155</b>	<b>.335</b>	<b>148-188</b>	<b>.787</b>	<b>75</b>	<b>228</b>	<b>303</b>	<b>37.9</b>	<b>156</b>	<b>7</b>	<b>92</b>	<b>11.50</b>	<b>172</b>	<b>21.50</b>	<b>0.53</b>	<b>29</b>	<b>3.63</b>	<b>57</b>	<b>7.13</b>	<b>550</b>	<b>68.8</b>
<b>Opponents</b>		<b>8</b>	<b>1625</b>		<b>211-518</b>	<b>.407</b>	<b>48-168</b>	<b>.286</b>	<b>108-162</b>	<b>.667</b>	<b>89</b>	<b>199</b>	<b>288</b>	<b>36.0</b>	<b>161</b>	<b>2</b>	<b>107</b>	<b>13.38</b>	<b>129</b>	<b>16.13</b>	<b>0.83</b>	<b>23</b>	<b>2.88</b>	<b>74</b>	<b>9.25</b>	<b>578</b>	<b>72.3</b>

**Score by Periods**

Team	1st	2nd	3rd	4th	OT	TOT
Evansville	131	114	154	144	7	550
Opponents	150	119	159	141	9	578



**#FORTHEACES**



## 2024-25 Evansville Women's Basketball Combined Team Statistics All games

### Game Records

Record	Overall	Home	Away	Neutral
ALL GAMES	3-5	3-0	0-3	0-2
CONFERENCE	0-0	0-0	0-0	0-0
NON-CONFERENCE	3-5	3-0	0-3	0-2

### Score by Periods

Team	1st	2nd	3rd	4th	OT	TOT
Evansville	131	114	154	144	7	550
Opponents	150	119	159	141	9	578

### Team Box Score

No.	Player	Total					3-Point			F-Throw		Rebounds				PF	DQ	A	TO	BLK	STL	PTS	AVG
		GP-GS	MIN	AVG	FG-FGA	FG%	3FG-3FGA	3FG%	FT-FTA	FT%	OFF	DEF	TOT	AVG									
10	RUNNER, Camryn	8-8	273:02	34.1	35-99	.354	10-32	.313	77-95	.811	9	33	42	5.3	26	1	26	35	10	12	157	19.6	
24	HARTWIG, Maggie	8-8	265:40	33.2	50-124	.403	13-36	.361	33-40	.825	20	55	75	9.4	26	1	5	34	8	8	146	18.3	
5	PALOMO, Julia	8-8	273:03	34.1	35-71	.493	11-25	.440	9-12	.750	8	21	29	3.6	18	1	15	25	1	22	90	11.3	
20	NORKUS, Kylee	4-4	119:45	29.9	14-24	.583	1-5	.200	11-17	.647	5	17	22	5.5	5	0	7	14	0	4	40	10.0	
15	SNYDER, Elle	1-0	16:32	16.5	2-4	.500	2-4	.500	0-0	.000	1	4	5	5.0	1	0	1	0	0	0	6	6.0	
4	DOZIER, Tamesha	8-8	178:57	22.4	16-34	.471	7-15	.467	4-6	.667	9	28	37	4.6	24	2	6	16	1	1	43	5.4	
11	KREINHAGEN, Kaiden	8-4	164:02	20.5	10-34	.294	8-29	.276	2-2	1.000	0	12	12	1.5	13	0	4	11	0	2	30	3.8	
1	KELLEY, Avery	8-0	131:19	16.4	6-29	.207	0-9	.000	8-10	.800	3	20	23	2.9	11	0	21	16	0	3	20	2.5	
21	SKRIVAN, Anica	7-0	48:07	6.9	4-8	.500	0-0	.000	3-4	.750	5	8	13	1.9	11	0	1	6	2	1	11	1.6	
25	CLEMENT, Claudia	7-0	139:42	20.0	3-19	.158	0-0	.000	0-0	.000	7	14	21	3.0	20	2	6	8	7	4	6	0.9	
13	GERKE, Madlena	2-0	13:07	6.6	0-3	.000	0-0	.000	1-2	.500	1	3	4	2.0	1	0	0	1	0	0	1	0.5	
0	HANNA, Mira	1-0	01:43	1.7	0-0	.000	0-0	.000	0-0	.000	0	0	0	0.0	0	0	0	0	0	0	0	0.0	
Team											7	13	20					6					
<b>Total</b>		<b>8</b>	<b>1625</b>		<b>175-449</b>	<b>.390</b>	<b>52-155</b>	<b>.335</b>	<b>148-188</b>	<b>.787</b>	<b>75</b>	<b>228</b>	<b>303</b>	<b>37.9</b>	<b>156</b>	<b>7</b>	<b>92</b>	<b>172</b>	<b>29</b>	<b>57</b>	<b>550</b>	<b>68.8</b>	
<b>Opponents</b>		<b>8</b>	<b>1625</b>		<b>211-518</b>	<b>.407</b>	<b>48-168</b>	<b>.286</b>	<b>108-162</b>	<b>.667</b>	<b>89</b>	<b>199</b>	<b>288</b>	<b>36.0</b>	<b>161</b>	<b>2</b>	<b>107</b>	<b>129</b>	<b>23</b>	<b>74</b>	<b>578</b>	<b>72.3</b>	

### Team Statistics

	EVANS	OPP
<b>Scoring</b>	<b>550</b>	<b>578</b>
Points per game	68.8	72.3
Scoring margin	-3.5	-
<b>Field goals-att</b>	<b>175-449</b>	<b>211-518</b>
Field goal pct	.390	.407
<b>3 point fg-att</b>	<b>52-155</b>	<b>48-168</b>
3-point FG pct	.335	.286
3-pt FG made per game	6.5	6.0
<b>Free throws-att</b>	<b>148-188</b>	<b>108-162</b>
Free throw pct	.787	.667
F-Throws made per game	18.5	13.5
<b>Rebounds</b>	<b>303</b>	<b>288</b>
Rebounds per game	37.9	36.0
Rebounding margin	+1.9	-
<b>Assists</b>	<b>92</b>	<b>107</b>
Assists per game	11.5	13.4
<b>Turnovers</b>	<b>172</b>	<b>129</b>
Turnovers per game	21.5	16.1
Turnover margin	-5.4	-
Assist/turnover ratio	0.5	0.8
<b>Steals</b>	<b>57</b>	<b>74</b>
Steals per game	7.1	9.3
<b>Blocks</b>	<b>29</b>	<b>23</b>
Blocks per game	3.6	2.9
<b>Winning streak</b>	<b>1</b>	<b>-</b>
Home win streak	3	-
<b>Attendance</b>	<b>804</b>	<b>1505</b>
Home games-Avg/Game	3-268	3-502
Neutral site-Avg/Game	-	2-156

### Team Results

Date	Opponent		Score	Att.
11/05/2024	at IU Indy	L	76-101	706
11/10/2024	Wright St.	W	65-63	392
11/14/2024	Southeast Mo. St.	W	70-55	0
11/18/2024	at Lindenwood	Lot	69-71	472
11/23/2024	at Lipscomb	L	79-86	327
11/29/2024	vs Nicholls	L	50-63	204
11/30/2024	vs Delaware	L	54-65	108
12/08/2024	SIUE	W	87-74	412