



Officials: Margaret Tieman, Kristen Bell, Charles Watson

Alabama A&M - 64

Record: 7-5

NO.	Name	F	Min	FG			3P			FT			Rebounds			Fouls		TP	AS	TO	ST	Blocks		+/-
				M-A	M-A	M-A	OR	DR	TOT	PF	FD	BS	BA											
3	Alisha Wilson	F	22:19	5-10	0-0	3-4	5	5	10	4	2	13	1	2	1	1	1	1	1	1	1	-15		
0	Darian Burgin	G	14:49	1-2	0-0	0-0	0	0	0	3	0	2	2	1	1	0	0	0	0	0	0	-5		
2	Jaiyah Harris-Smith	G	34:23	2-4	0-0	0-2	0	3	3	1	3	4	7	3	2	0	1	-30						
4	Kourtney Rittenberry	G	23:46	7-14	1-1	0-0	3	0	3	2	0	15	0	2	2	0	0	-16						
24	Lauryn Pendleton	G	32:46	5-12	0-1	2-3	0	1	1	2	3	12	1	3	0	0	0	-26						
12	Tia Harvey		13:56	1-2	1-1	0-0	0	1	1	1	0	3	0	1	1	0	0	-9						
1	Mailyn Wilkerson		25:49	4-14	3-12	0-0	0	1	1	0	0	11	1	3	2	1	0	-17						
21	LaCambria Shakespeare		04:49	0-0	0-0	0-0	0	1	1	0	0	0	0	1	0	0	0	-9						
11	Aniya Palmer		17:25	1-3	0-0	0-0	1	5	6	1	1	2	1	2	0	0	0	-14						
8	Nyla Allen		05:37	0-0	0-0	0-0	0	0	0	0	0	0	0	0	0	0	0	1						
22	Shelomi Sanders		04:22	1-3	0-1	0-0	0	1	1	0	0	2	0	0	0	0	0	-5						
Team							0	3	3			0		1										
Totals					27-64	5-16	5-9	9	21	30	14	9	64	13	19	9	2	2	-29					

Technical Fouls::NONE

Shooting By Period		
1st FG%	6-15	40.0%
3PT%	2-3	66.7%
FT%	2-4	50%
2nd FG%	5-16	31.3%
3PT%	1-4	25.0%
FT%	0-0	0%
3rd FG%	8-14	57.1%
3PT%	1-3	33.3%
FT%	2-3	66.7%
4th FG%	8-19	42.1%
3PT%	1-6	16.7%
FT%	1-2	50%
GM FG%	27-64	42.2%
3PT%	5-16	31.3%
FT%	5-9	55.6%

Dead Ball Rebounds: 4, 0

Vanderbilt - 93

Record: 13-1

NO.	Name	F	Min	FG			3P			FT			Rebounds			Fouls		TP	AS	TO	ST	Blocks		+/-
				M-A	M-A	M-A	OR	DR	TOT	PF	FD	BS	BA											
10	Jane Nwaba	F	18:31	3-4	0-1	3-3	1	2	3	2	3	9	2	1	0	0	1	14						
12	Khamil Pierre	F	29:22	13-19	0-0	3-5	5	2	7	2	4	29	4	1	4	1	1	20						
1	Mikayla Blakes	G	17:01	2-9	0-5	1-3	1	2	3	0	3	5	1	1	3	1	0	4						
11	Jordyn Oliver	G	31:09	2-5	0-0	0-0	1	6	7	2	0	4	8	1	3	0	0	33						
23	Iyana Moore	G	33:44	7-17	2-7	0-0	2	2	4	1	2	16	7	2	1	0	0	29						
4	Madison Greene		24:12	5-7	1-3	1-2	1	5	6	0	1	12	2	3	1	0	0	18						
14	Aiyana Mitchell		10:24	3-4	0-0	0-1	0	4	4	1	1	6	0	2	0	0	0	8						
5	Leilani Kapinus		18:30	1-1	0-0	0-0	1	1	2	1	0	2	3	2	0	0	0	18						
24	Aga Makurat		07:14	3-4	2-3	0-0	0	0	0	0	0	8	0	0	1	0	0	-1						
2	Jada Brown		04:01	0-0	0-0	0-0	0	1	1	0	0	0	2	2	0	0	0	2						
13	Justine Pissott		04:01	1-1	0-0	0-0	0	0	0	0	0	2	0	0	0	0	0	2						
30	Trinity Wilson		01:51	0-0	0-0	0-0	0	0	0	0	0	0	1	0	0	0	0	-2						
Team							1	3	4			0		0										
Totals					40-71	5-19	8-14	13	28	41	9	14	93	30	15	13	2	2	29					

Technical Fouls::NONE

Shooting By Period		
1st FG%	10-18	55.6%
3PT%	1-5	20.0%
FT%	3-6	50%
2nd FG%	9-21	42.9%
3PT%	0-6	0.0%
FT%	3-5	60%
3rd FG%	10-18	55.6%
3PT%	2-5	40.0%
FT%	0-0	0%
4th FG%	11-14	78.6%
3PT%	2-3	66.7%
FT%	2-3	66.7%
GM FG%	40-71	56.3%
3PT%	5-19	26.3%
FT%	8-14	57.1%

Dead Ball Rebounds: 3, 0

	AAMU	VANDY
Biggest lead	0 (1 st 10:00)	31 (4 th 1:57)
Best Scoring Run	6(4 th 9:39)	10(1 st 2:43)
Lead Changes	0	
Times Tied	1	
Time with Lead	00:00	38:51

	AAMU	VANDY
Points from		
Turnovers	11	24
Paint	42	60
Second Chance	9	19
Fast Breaks	14	23
Bench	18	30

	Period by Period Scoring				
	1st	2nd	3rd	4th	TOT
AAMU	16	11	19	18	64
VANDY	24	21	22	26	93



Period 1

Quarter Starters:

VANDY	1 Blakes M	10 Nwaba J	11 Oliver J	12 Pierre K	23 Moore I
AAMU	0 Burgin D	2 Harris-Smith J	3 Wilson A	4 Rittenberry K	24 Pendleton L

Game Time	VANDY	Score	Diff	AAMU
10:00	12 PIERRE K jumpball won			3 WILSON A jumpball lost
09:51	12 PIERRE K 2pt FG in the paint, layup made (2)	2-0	2	
09:51	23 MOORE I assist (1)			
09:39	1 BLAKES M steal (1)			4 RITTENBERRY K turnover bad pass (1)
09:32	1 BLAKES M 3pt FG from turnover, jump shot missed			
09:29	12 PIERRE K offensive rebound (1)			
09:22	10 NWABA J 2pt FG from turnover second chance in the paint, turnaround jump shot made (2)	4-0	4	
08:54				3 WILSON A 2pt FG in the paint, turnaround jump shot missed
08:50				3 WILSON A offensive rebound (1)
08:49		4-2	2	3 WILSON A 2pt FG second chance in the paint, layup made (2)
08:36	23 MOORE I 3pt FG , jump shot missed			
08:33	12 PIERRE K offensive rebound (2)			
08:31	12 PIERRE K 2pt FG second chance in the paint, layup made (4)	6-2	4	
08:07		6-5	1	4 RITTENBERRY K 3pt FG , pull up jump shot made (3)
07:51	1 BLAKES M 3pt FG , jump shot missed			
07:46	10 NWABA J offensive rebound (1)			
07:46	10 NWABA J 2pt FG second chance in the paint, layup made (4)	8-5	3	
07:46	10 NWABA J foul drawn (1)			4 RITTENBERRY K foul shooting (1 - 1)
07:46	10 NWABA J free throw 1 - 1 made (5)	9-5	4	
07:38		9-7	2	2 HARRIS-SMITH J 2pt FG fast break in the paint, driving layup made (2)
07:10	12 PIERRE K 2pt FG outside the paint, jump shot missed			
07:09				defensive rebound (2)
06:57				3 WILSON A 2pt FG in the paint, layup blocked
06:57	1 BLAKES M block (1)			
06:53	10 NWABA J defensive rebound (2)			
06:48	1 BLAKES M 2pt FG in the paint, driving layup made (2)	11-7	4	
06:48	10 NWABA J assist (1)			
06:48	1 BLAKES M foul drawn (1)			4 RITTENBERRY K foul shooting (2 - 2)
06:48				Timeout 30 Sec
06:48	Timeout media			
06:48				4 RITTENBERRY K substitution out
06:48				12 HARVEY T substitution in
06:48	1 BLAKES M free throw 1 - 1 missed			
06:46				3 WILSON A defensive rebound (2)
06:41				0 BURGIN D 2pt FG in the paint, driving layup missed
06:39				3 WILSON A offensive rebound (3)
06:38	10 NWABA J foul shooting (1 - 1)			3 WILSON A foul drawn (1)
06:38		11-8	3	3 WILSON A free throw 1 - 2 made (3)
06:38		11-9	2	3 WILSON A free throw 2 - 2 made (4)
06:38	10 NWABA J substitution out			
06:38	4 GREENE M substitution in			



Official Basketball Play by Play - 1st Period
Alabama A&M at Vanderbilt
 12/29/24 Memorial Gymnasium (Vanderbilt), Nashville
 2024-25 Women's Basketball

Game Time: 11:00 AM
Game Duration: 1:53
Attendance: 3,061

Officials: Margaret Tieman, Kristen Bell, Charles Watson

Game Time	VANDY	Score	Diff	AAMU
06:23	4 GREENE M 3pt FG , jump shot missed			
06:18				2 HARRIS-SMITH J defensive rebound (1)
06:14	11 OLIVER J foul shooting (1 - 2)			2 HARRIS-SMITH J foul drawn (1)
06:14				2 HARRIS-SMITH J free throw 1 - 2 missed
06:14				offensive dead ball rebound (1)
06:14				2 HARRIS-SMITH J free throw 2 - 2 missed
06:13				3 WILSON A offensive rebound (4)
06:12		11-11	0	3 WILSON A 2pt FG second chance in the paint, layup made (6)
05:52	23 MOORE I turnover bad pass (1)			0 BURGIN D steal (1)
05:46	1 BLAKES M steal (2)			12 HARVEY T turnover bad pass (1)
05:41	1 BLAKES M 2pt FG fast break from turnover in the paint, driving layup missed			
05:39				2 HARRIS-SMITH J defensive rebound (2)
05:39	23 MOORE I foul personal (1 - 3)			2 HARRIS-SMITH J foul drawn (2)
05:39	12 PIERRE K substitution out			
05:39	14 MITCHELL A substitution in			
05:31				3 WILSON A turnover travel (1)
05:12	14 MITCHELL A 2pt FG from turnover in the paint, jump shot made (2)	13-11	2	
05:12	23 MOORE I assist (2)			
04:55				24 PENDLETON L 2pt FG in the paint, layup missed
04:52	1 BLAKES M defensive rebound (1)			
04:47	1 BLAKES M foul drawn (2)			3 WILSON A foul shooting (1 - 3)
04:47				0 BURGIN D substitution out
04:47				3 WILSON A substitution out
04:47				1 WILKERSON M substitution in
04:47				21 SHAKESPEARE L substitution in
04:47	1 BLAKES M free throw fast break 1 - 2 missed			
04:47	offensive dead ball rebound (1)			
04:47	1 BLAKES M free throw fast break 2 - 2 made (3)	14-11	3	
04:47	1 BLAKES M substitution out			
04:47	5 KAPINUS L substitution in			
04:29				12 HARVEY T 2pt FG in the paint, pull up jump shot missed
04:27	11 OLIVER J defensive rebound (1)			
04:22	23 MOORE I 3pt FG fast break, pull up jump shot made (3)	17-11	6	
04:22	11 OLIVER J assist (1)			
03:53				2 HARRIS-SMITH J 2pt FG in the paint, pull up jump shot missed
03:50	defensive rebound (7)			
03:35	4 GREENE M 2pt FG in the paint, driving layup made (2)	19-11	8	
03:35	11 OLIVER J assist (2)			
03:21	11 OLIVER J steal (1)			2 HARRIS-SMITH J turnover bad pass (1)
03:16				21 SHAKESPEARE L substitution out
03:16				3 WILSON A substitution in
03:16				12 HARVEY T substitution out
03:16				11 PALMER A substitution in
03:04	5 KAPINUS L turnover lost ball (1)			1 WILKERSON M steal (1)
02:49				3 WILSON A 2pt FG from turnover in the paint, layup missed
02:45	4 GREENE M defensive rebound (1)			



Official Basketball Play by Play - 1st Period
Alabama A&M at Vanderbilt
 12/29/24 Memorial Gymnasium (Vanderbilt), Nashville
 2024-25 Women's Basketball

Game Time: 11:00 AM
Game Duration: 1:53
Attendance: 3,061

Officials: Margaret Tieman, Kristen Bell, Charles Watson

Game Time	VANDY	Score	Diff	AAMU
02:43	4 GREENE M 2pt FG fast break in the paint, driving layup made (4)	21-11	10	
02:26				24 PENDLETON L 2pt FG in the paint, driving layup missed
02:23	14 MITCHELL A defensive rebound (1)			
02:17	23 MOORE I 2pt FG in the paint, driving layup missed			
02:15				11 PALMER A defensive rebound (1)
02:15	14 MITCHELL A foul personal (1 - 4)			11 PALMER A foul drawn (1)
02:15	11 OLIVER J substitution out			
02:15	12 PIERRE K substitution in			
02:15				24 PENDLETON L substitution out
02:15				0 BURGIN D substitution in
02:15	23 MOORE I substitution out			
02:15	1 BLAKES M substitution in			
01:52		21-13	8	1 WILKERSON M 2pt FG in the paint, floating jump shot made (2)
01:39	14 MITCHELL A turnover bad pass (1)			
01:39				11 PALMER A substitution out
01:39				12 HARVEY T substitution in
01:26	1 BLAKES M steal (3)			1 WILKERSON M turnover bad pass (1)
01:19	12 PIERRE K 2pt FG from turnover in the paint, layup missed			
01:15				2 HARRIS-SMITH J defensive rebound (3)
01:12		21-16	5	1 WILKERSON M 3pt FG fast break, jump shot made (5)
01:12				0 BURGIN D assist (1)
00:48	12 PIERRE K 2pt FG in the paint, layup made (6)	23-16	7	
00:48	5 KAPINUS L assist (1)			
00:37	5 KAPINUS L substitution out			
00:37	14 MITCHELL A substitution out			
00:37	10 NWABA J substitution in			
00:37	11 OLIVER J substitution in			
00:37				2 HARRIS-SMITH J substitution out
00:37				12 HARVEY T substitution out
00:37				8 ALLEN N substitution in
00:37				24 PENDLETON L substitution in
00:34				1 WILKERSON M 3pt FG , jump shot missed
00:31	4 GREENE M defensive rebound (2)			
00:26	1 BLAKES M foul drawn (3)			0 BURGIN D foul personal (1 - 4)
00:08	12 PIERRE K foul drawn (1)			3 WILSON A foul shooting (2 - 5)
00:08	12 PIERRE K free throw 1 - 2 missed			
00:08	offensive dead ball rebound (2)			
00:08	12 PIERRE K free throw 2 - 2 made (7)	24-16	8	
00:08				3 WILSON A substitution out
00:08				11 PALMER A substitution in
END OF PERIOD				
VANDY 24-16 AAMU				



Officials: Margaret Tieman, Kristen Bell, Charles Watson

Alabama A&M - 16

NO.	Name	F	Min	FG			Rebounds			Fouls		TP	AS	TO	ST	Blocks		+/-
				M-A	M-A	M-A	OR	DR	TOT	PF	FD					BS	BA	
3	Alisha Wilson	F	08:21	2-5	0-0	2-2	3	1	4	2	1	6	0	1	0	0	1	-2
0	Darian Burgin	G	07:28	0-1	0-0	0-0	0	0	0	1	0	0	1	0	1	0	0	0
2	Jaiyah Harris-Smith	G	09:22	1-2	0-0	0-2	0	3	3	0	2	2	0	1	0	0	0	-7
4	Kourtney Rittenberry	G	03:12	1-1	1-1	0-0	0	0	0	2	0	3	0	1	0	0	0	-4
24	Lauryn Pendleton	G	08:23	0-2	0-0	0-0	0	0	0	0	0	0	0	0	0	0	0	-11
12	Tia Harvey		04:33	0-1	0-0	0-0	0	0	0	0	0	0	0	1	0	0	0	-3
1	Mailyn Wilkerson		04:47	2-3	1-2	0-0	0	0	0	0	0	5	0	1	1	0	0	-6
21	LaCambria Shakespeare		01:31	0-0	0-0	0-0	0	0	0	0	0	0	0	0	0	0	0	-6
11	Aniya Palmer		01:45	0-0	0-0	0-0	0	1	1	0	1	0	0	0	0	0	0	0
8	Nyla Allen		00:38	0-0	0-0	0-0	0	0	0	0	0	0	0	0	0	0	0	-1
Team							0	1	1			0		0				
Totals				6-15	2-3	2-4	3	6	9	5	4	16	1	5	2	0	1	-8

Shooting By Period		
1st FG%	6-15	40.0%
3PT%	2-3	66.7%
FT%	2-4	50%
GM FG%	6-15	40.0%
3PT%	2-3	66.7%
FT%	2-4	50.0%

Dead Ball Rebounds: 1, 0

Technical Fouls::NONE

Vanderbilt - 24

NO.	Name	F	Min	FG			Rebounds			Fouls		TP	AS	TO	ST	Blocks		+/-
				M-A	M-A	M-A	OR	DR	TOT	PF	FD					BS	BA	
10	Jane Nwaba	F	03:60	2-2	0-0	1-1	1	1	2	1	1	5	1	0	0	0	0	3
12	Khamil Pierre	F	06:36	3-5	0-0	1-2	2	0	2	0	1	7	0	0	0	0	0	-2
1	Mikayla Blakes	G	07:28	1-4	0-2	1-3	0	1	1	0	3	3	0	0	3	1	0	1
11	Jordyn Oliver	G	08:23	0-0	0-0	0-0	0	1	1	1	0	0	2	0	1	0	0	11
23	Iyana Moore	G	07:45	1-3	1-2	0-0	0	0	0	1	0	3	2	1	0	0	0	10
4	Madison Greene		06:38	2-3	0-1	0-0	0	2	2	0	0	4	0	0	0	0	0	6
14	Aiyana Mitchell		05:01	1-1	0-0	0-0	0	1	1	1	0	2	0	1	0	0	0	7
5	Leilani Kapinus		04:09	0-0	0-0	0-0	0	0	0	0	0	0	1	1	0	0	0	4
Team							0	1	1			0		0				
Totals				10-18	1-5	3-6	3	7	10	4	5	24	6	3	4	1	0	8

Shooting By Period		
1st FG%	10-18	55.6%
3PT%	1-5	20.0%
FT%	3-6	50%
GM FG%	10-18	55.6%
3PT%	1-5	20.0%
FT%	3-6	50.0%

Dead Ball Rebounds: 2, 0

Technical Fouls::NONE

	AAMU	VANDY
Biggest lead	0 (1 st 10:00)	10 (1 st 2:43)
Best Scoring Run	5 (1 st 1:12)	10 (1 st 2:43)
Lead Changes	0	
Times Tied	1	
Time with Lead	00:00	08:51

	AAMU	VANDY
Points from		
Turnovers	0	4
Paint	8	18
Second Chance	6	7
Fast Breaks	5	6
Bench	5	6

	Period by Period Scoring				
	1st	2nd	3rd	4th	TOT
AAMU	16	11	19	18	64
VANDY	24	21	22	26	93



Officials: Margaret Tieman, Kristen Bell, Charles Watson

Period 2

Quarter Starters:

VANDY	1 Blakes M	4 Greene M	11 Oliver J	12 Pierre K	23 Moore I
AAMU	0 Burgin D	1 Wilkerson M	2 Harris-Smith J	11 Palmer A	24 Pendleton L

Game Time	VANDY	Score	Diff	AAMU
10:00	10 NWABA J substitution out			
10:00	23 MOORE I substitution in			
10:00				8 ALLEN N substitution out
10:00				2 HARRIS-SMITH J substitution in
09:40		24-18	6	24 PENDLETON L 2pt FG in the paint, pull up jump shot made (2)
09:40				2 HARRIS-SMITH J assist (1)
09:31	4 GREENE M turnover bad pass (1)			2 HARRIS-SMITH J steal (1)
09:26				1 WILKERSON M 3pt FG fast break from turnover, jump shot missed
09:21	1 BLAKES M defensive rebound (2)			
09:21	jump ball situation			
09:08	1 BLAKES M 3pt FG , jump shot missed			
09:04				11 PALMER A defensive rebound (2)
08:53		24-20	4	11 PALMER A 2pt FG in the paint, layup made (2)
08:53				2 HARRIS-SMITH J assist (2)
08:52	Timeout 30 Sec			
08:52	Timeout media			
08:52	4 GREENE M substitution out			
08:52	5 KAPINUS L substitution in			
08:37	23 MOORE I 3pt FG , jump shot missed			
08:32	5 KAPINUS L offensive rebound (1)			
08:27	1 BLAKES M 2pt FG second chance outside the paint, pull up jump shot made (5)	26-20	6	
08:27	5 KAPINUS L assist (2)			
08:14				2 HARRIS-SMITH J turnover travel (2)
08:03	12 PIERRE K 2pt FG from turnover outside the paint, turnaround jump shot made (9)	28-20	8	
07:48				24 PENDLETON L 2pt FG in the paint, turnaround jump shot missed
07:42	23 MOORE I defensive rebound (1)			
07:41	23 MOORE I foul drawn (1)			2 HARRIS-SMITH J foul personal (1 - 1)
07:41				24 PENDLETON L substitution out
07:41				12 HARVEY T substitution in
07:34	12 PIERRE K 2pt FG in the paint, layup made (11)	30-20	10	
07:34	23 MOORE I assist (3)			
07:34	12 PIERRE K foul drawn (2)			0 BURGIN D foul shooting (2 - 2)
07:34				0 BURGIN D substitution out
07:34				4 RITTENBERRY K substitution in
07:34	12 PIERRE K free throw 1 - 1 missed			
07:32				11 PALMER A defensive rebound (3)
07:24				turnover 10 sec back court (7)
07:24				12 HARVEY T substitution out
07:24				22 SANDERS S substitution in



Official Basketball Play by Play - 2nd Period
Alabama A&M at Vanderbilt
 12/29/24 Memorial Gymnasium (Vanderbilt), Nashville
 2024-25 Women's Basketball

Game Time: 11:00 AM
Game Duration: 1:53
Attendance: 3,061

Officials: Margaret Tieman, Kristen Bell, Charles Watson

Game Time	VANDY	Score	Diff	AAMU
07:15	11 OLIVER J 2pt FG from turnover in the paint, turnaround jump shot missed			
07:12	11 OLIVER J offensive rebound (2)			
07:02	1 BLAKES M 3pt FG from turnover second chance, jump shot missed			
06:58				22 SANDERS S defensive rebound (1)
06:56				11 PALMER A substitution out
06:56				21 SHAKESPEARE L substitution in
06:49	jump ball situation			
06:49				1 WILKERSON M substitution out
06:49				24 PENDLETON L substitution in
06:49				21 SHAKESPEARE L substitution out
06:49				3 WILSON A substitution in
06:47				4 RITTENBERRY K substitution out
06:47				11 PALMER A substitution in
06:46	11 OLIVER J steal (2)			24 PENDLETON L turnover bad pass (1)
06:46				3 WILSON A substitution out
06:46				22 SANDERS S substitution out
06:46				0 BURGIN D substitution in
06:46				21 SHAKESPEARE L substitution in
06:46				2 HARRIS-SMITH J substitution out
06:46				8 ALLEN N substitution in
06:37	12 PIERRE K 2pt FG from turnover outside the paint, pull up jump shot missed			
06:34				defensive rebound (13)
06:34				0 BURGIN D substitution out
06:34				8 ALLEN N substitution out
06:34				11 PALMER A substitution out
06:34				21 SHAKESPEARE L substitution out
06:34				2 HARRIS-SMITH J substitution in
06:34				3 WILSON A substitution in
06:34				4 RITTENBERRY K substitution in
06:34				22 SANDERS S substitution in
06:22				4 RITTENBERRY K 2pt FG outside the paint, jump shot missed
06:19	11 OLIVER J defensive rebound (3)			
06:00	11 OLIVER J 2pt FG in the paint, turnaround jump shot missed			
05:58	12 PIERRE K offensive rebound (3)			
05:58	12 PIERRE K 2pt FG second chance in the paint, layup made (13)	32-20	12	
05:57	12 PIERRE K foul drawn (3)			3 WILSON A foul shooting (3 - 3)
05:57				3 WILSON A substitution out
05:57				11 PALMER A substitution in
05:57	12 PIERRE K free throw 1 - 1 made (14)	33-20	13	
05:56				22 SANDERS S substitution out
05:56				12 HARVEY T substitution in
05:43		33-23	10	12 HARVEY T 3pt FG , jump shot made (3)
05:43				24 PENDLETON L assist (1)
05:35	1 BLAKES M turnover bad pass (1)			
05:31		33-25	8	4 RITTENBERRY K 2pt FG fast break from turnover in the paint, driving layup made (5)
05:31				11 PALMER A assist (1)



Official Basketball Play by Play - 2nd Period
Alabama A&M at Vanderbilt
 12/29/24 Memorial Gymnasium (Vanderbilt), Nashville
 2024-25 Women's Basketball

Game Time: 11:00 AM
Game Duration: 1:53
Attendance: 3,061

Officials: Margaret Tieman, Kristen Bell, Charles Watson

Game Time	VANDY	Score	Diff	AAMU
05:11	1 BLAKES M 3pt FG , jump shot missed			
05:06				11 PALMER A defensive rebound (4)
05:01				24 PENDLETON L 2pt FG outside the paint, pull up jump shot missed
04:58	11 OLIVER J defensive rebound (4)			
04:58	jump ball situation			
04:58	1 BLAKES M substitution out			
04:58	4 GREENE M substitution in			
04:58				11 PALMER A substitution out
04:58				21 SHAKESPEARE L substitution in
04:48	23 MOORE I 3pt FG , jump shot missed			
04:42	4 GREENE M offensive rebound (3)			
04:38	23 MOORE I 2pt FG second chance outside the paint, pull up jump shot missed			
04:35	23 MOORE I offensive rebound (2)			
04:32	23 MOORE I foul drawn (2)			12 HARVEY T foul personal (1 - 4)
04:29	12 PIERRE K 2pt FG second chance in the paint, driving layup made (16)	35-25	10	
04:29	11 OLIVER J assist (3)			
04:06				2 HARRIS-SMITH J 2pt FG in the paint, layup blocked
04:06	12 PIERRE K block (1)			
03:59	11 OLIVER J defensive rebound (5)			
03:58	4 GREENE M 2pt FG fast break in the paint, layup made (6)	37-25	12	
03:58	11 OLIVER J assist (4)			
03:37	11 OLIVER J steal (3)			4 RITTENBERRY K turnover lost ball (2)
03:31	4 GREENE M turnover bad pass (2)			4 RITTENBERRY K steal (1)
03:26				4 RITTENBERRY K 2pt FG from turnover in the paint, driving layup missed
03:23	4 GREENE M defensive rebound (4)			
03:10	23 MOORE I 2pt FG in the paint, pull up jump shot missed			
03:07				21 SHAKESPEARE L defensive rebound (1)
02:54	12 PIERRE K steal (1)			21 SHAKESPEARE L turnover lost ball (1)
02:50	12 PIERRE K 2pt FG fast break from turnover in the paint, driving layup made (18)	39-25	14	
02:49	12 PIERRE K foul drawn (4)			24 PENDLETON L foul shooting (1 - 5)
02:49				21 SHAKESPEARE L substitution out
02:49				11 PALMER A substitution in
02:49				12 HARVEY T substitution out
02:49				24 PENDLETON L substitution out
02:49				0 BURGIN D substitution in
02:49				1 WILKERSON M substitution in
02:49	12 PIERRE K free throw fast break 1 - 1 made (19)	40-25	15	
02:41	12 PIERRE K steal (2)			1 WILKERSON M turnover bad pass (2)
02:36	4 GREENE M 2pt FG fast break from turnover in the paint, driving layup made (8)	42-25	17	
02:36	12 PIERRE K assist (1)			
02:23		42-27	15	4 RITTENBERRY K 2pt FG fast break in the paint, layup made (7)
02:23				0 BURGIN D assist (2)
02:10	23 MOORE I 3pt FG , jump shot missed			
02:06	12 PIERRE K offensive rebound (4)			



Official Basketball Play by Play - 2nd Period
Alabama A&M at Vanderbilt
 12/29/24 Memorial Gymnasium (Vanderbilt), Nashville
 2024-25 Women's Basketball

Game Time: 11:00 AM
Game Duration: 1:53
Attendance: 3,061

Officials: Margaret Tieman, Kristen Bell, Charles Watson

Game Time	VANDY	Score	Diff	AAMU
02:05	4 GREENE M foul drawn (1)			0 BURGIN D foul shooting (3 - 6)
02:05				Timeout 30 Sec
02:05	4 GREENE M free throw 1 - 2 missed			
02:05	offensive dead ball rebound (3)			
02:05	4 GREENE M free throw 2 - 2 made (9)	43-27	16	
02:05				0 BURGIN D substitution out
02:05				24 PENDLETON L substitution in
01:57				24 PENDLETON L turnover travel (2)
01:47	5 KAPINUS L turnover lost ball (2)			1 WILKERSON M steal (2)
01:40				11 PALMER A 2pt FG from turnover in the paint, floating jump shot missed
01:36				11 PALMER A offensive rebound (5)
01:35				11 PALMER A 2pt FG from turnover second chance in the paint, jump shot missed
01:32	4 GREENE M defensive rebound (5)			
01:26				1 WILKERSON M substitution out
01:26				12 HARVEY T substitution in
01:19	12 PIERRE K turnover bad pass (1)			
01:19				12 HARVEY T substitution out
01:19				1 WILKERSON M substitution in
01:05				1 WILKERSON M 3pt FG from turnover, pull up jump shot missed
01:01	4 GREENE M defensive rebound (6)			
00:55	12 PIERRE K 2pt FG in the paint, layup blocked			
00:55				1 WILKERSON M block (1)
00:50				1 WILKERSON M defensive rebound (1)
00:35				4 RITTENBERRY K 2pt FG in the paint, driving layup missed
00:32	5 KAPINUS L defensive rebound (2)			
00:16	23 MOORE I 2pt FG in the paint, driving layup made (5)	45-27	18	
00:02				1 WILKERSON M 3pt FG , jump shot missed
00:00				offensive dead ball rebound (2)
END OF PERIOD				
VANDY 45-27 AAMU				



Officials: Margaret Tieman, Kristen Bell, Charles Watson

Alabama A&M - 11

NO.	Name	F	Min	FG	3P	FT	Rebounds			Fouls		TP	AS	TO	ST	Blocks		+/-
				M-A	M-A	M-A	OR	DR	TOT	PF	FD					BS	BA	
3	Alisha Wilson	F	00:40	0-0	0-0	0-0	0	0	0	1	0	0	0	0	0	0	0	-2
0	Darian Burgin	G	03:22	0-0	0-0	0-0	0	0	0	2	0	0	1	0	0	0	0	-4
2	Jaiyah Harris-Smith	G	09:48	0-1	0-0	0-0	0	0	0	1	0	0	2	1	1	0	1	-10
4	Kourtney Rittenberry	G	07:21	2-5	0-0	0-0	0	0	0	0	0	4	0	1	1	0	0	-8
24	Lauryn Pendleton	G	08:24	1-3	0-0	0-0	0	0	0	1	0	2	1	2	0	0	0	-6
12	Tia Harvey		03:31	1-1	1-1	0-0	0	0	0	1	0	3	0	0	0	0	0	-3
22	Shelomi Sanders		01:16	0-0	0-0	0-0	0	1	1	0	0	0	0	0	0	0	0	-3
21	LaCambria Shakespeare		02:28	0-0	0-0	0-0	0	1	1	0	0	0	0	1	0	0	0	-6
11	Aniya Palmer		07:05	1-3	0-0	0-0	1	3	4	0	0	2	1	0	0	0	0	-2
8	Nyla Allen		00:12	0-0	0-0	0-0	0	0	0	0	0	0	0	0	0	0	0	0
1	Mailyn Wilkerson		05:53	0-3	0-3	0-0	0	1	1	0	0	0	0	1	1	1	0	-6
Team							0	1	1			0		1				
Totals				5-16	1-4	0-0	1	7	8	6	0	11	5	7	3	1	1	-10

Shooting By Period		
2nd FG%	5-16	31.3%
3PT%	1-4	25.0%
FT%	0-0	0%
GM FG%	5-16	31.3%
3PT%	1-4	25.0%
FT%	0-0	0.0%

Dead Ball Rebounds: 1, 0

Technical Fouls::NONE

Vanderbilt - 21

NO.	Name	F	Min	FG	3P	FT	Rebounds			Fouls		TP	AS	TO	ST	Blocks		+/-
				M-A	M-A	M-A	OR	DR	TOT	PF	FD					BS	BA	
10	Jane Nwaba	F	00:00	0-0	0-0	0-0	0	0	0	0	0	0	0	0	0	0	0	0
12	Khamil Pierre	F	10:00	5-7	0-0	2-3	2	0	2	0	3	12	1	1	2	1	1	10
1	Mikayla Blakes	G	05:02	1-4	0-3	0-0	0	1	1	0	0	2	0	1	0	0	0	0
11	Jordyn Oliver	G	10:00	0-2	0-0	0-0	1	3	4	0	0	0	2	0	2	0	0	10
23	Iyana Moore	G	10:00	1-6	0-3	0-0	1	1	2	0	2	2	1	0	0	0	0	10
5	Leilani Kapinus		08:52	0-0	0-0	0-0	1	1	2	0	0	0	1	1	0	0	0	14
4	Madison Greene		06:06	2-2	0-0	1-2	1	3	4	0	1	5	0	2	0	0	0	6
Team							0	0	0			0		0				
Totals				9-21	0-6	3-5	6	9	15	0	6	21	5	5	4	1	1	10

Shooting By Period		
2nd FG%	9-21	42.9%
3PT%	0-6	0.0%
FT%	3-5	60%
GM FG%	9-21	42.9%
3PT%	0-6	0.0%
FT%	3-5	60.0%

Dead Ball Rebounds: 1, 0

Technical Fouls::NONE

	AAMU	VANDY
Biggest lead	0 (1 st 10:00)	18 (2 nd 0:16)
Best Scoring Run	5(2 nd 5:31)	9(2 nd 5:57)
Lead Changes	0	
Times Tied	0	
Time with Lead	00:00	09:40

Points from	AAMU	VANDY
Turnovers	2	7
Paint	8	14
Second Chance	0	8
Fast Breaks	4	7
Bench	5	5

	Period by Period Scoring				
	1st	2nd	3rd	4th	TOT
AAMU	16	11	19	18	64
VANDY	24	21	22	26	93



Officials: Margaret Tieman, Kristen Bell, Charles Watson

Alabama A&M - 27

NO.	Name	F/G	Min	FG			Rebounds			Fouls		TP	AS	TO	ST	Blocks		+/-
				M-A	M-A	M-A	OR	DR	TOT	PF	FD					BS	BA	
3	Alisha Wilson	F	09:01	2-5	0-0	2-2	3	1	4	3	1	6	0	1	0	0	1	-4
0	Darian Burgin	G	10:50	0-1	0-0	0-0	0	0	0	3	0	0	2	0	1	0	0	-4
2	Jaiyah Harris-Smith	G	19:10	1-3	0-0	0-2	0	3	3	1	2	2	2	2	1	0	1	-17
4	Kourtney Rittenberry	G	10:33	3-6	1-1	0-0	0	0	0	2	0	7	0	2	1	0	0	-12
24	Lauryn Pendleton	G	16:47	1-5	0-0	0-0	0	0	0	1	0	2	1	2	0	0	0	-17
12	Tia Harvey		08:04	1-2	1-1	0-0	0	0	0	1	0	3	0	1	0	0	0	-6
1	Mailyn Wilkerson		10:40	2-6	1-5	0-0	0	1	1	0	0	5	0	2	2	1	0	-12
21	LaCambria Shakespeare		03:59	0-0	0-0	0-0	0	1	1	0	0	0	0	1	0	0	0	-12
11	Aniya Palmer		08:50	1-3	0-0	0-0	1	4	5	0	1	2	1	0	0	0	0	-2
8	Nyla Allen		00:50	0-0	0-0	0-0	0	0	0	0	0	0	0	0	0	0	0	-1
22	Shelomi Sanders		01:16	0-0	0-0	0-0	0	1	1	0	0	0	0	0	0	0	0	-3
Team							0	2	2			0		1				
Totals				11-31	3-7	2-4	4	13	17	11	4	27	6	12	5	1	2	-18

Shooting By Period		
1st FG%	6-15	40.0%
3PT%	2-3	66.7%
FT%	2-4	50%
2nd FG%	5-16	31.3%
3PT%	1-4	25.0%
FT%	0-0	0%
GM FG%	11-31	35.5%
3PT%	3-7	42.9%
FT%	2-4	50.0%

Dead Ball Rebounds: 2, 0

Technical Fouls::NONE

Vanderbilt - 45

NO.	Name	F/G	Min	FG			Rebounds			Fouls		TP	AS	TO	ST	Blocks		+/-
				M-A	M-A	M-A	OR	DR	TOT	PF	FD					BS	BA	
10	Jane Nwaba	F	03:60	2-2	0-0	1-1	1	1	2	1	1	5	1	0	0	0	0	3
12	Khamil Pierre	F	16:36	8-12	0-0	3-5	4	0	4	0	4	19	1	1	2	1	1	8
1	Mikayla Blakes	G	12:30	2-8	0-5	1-3	0	2	2	0	3	5	0	1	3	1	0	1
11	Jordyn Oliver	G	18:23	0-2	0-0	0-0	1	4	5	1	0	0	4	0	3	0	0	21
23	Iyana Moore	G	17:45	2-9	1-5	0-0	1	1	2	1	2	5	3	1	0	0	0	20
4	Madison Greene		12:44	4-5	0-1	1-2	1	5	6	0	1	9	0	2	0	0	0	12
14	Aiyana Mitchell		05:01	1-1	0-0	0-0	0	1	1	1	0	2	0	1	0	0	0	7
5	Leilani Kapinus		13:01	0-0	0-0	0-0	1	1	2	0	0	0	2	2	0	0	0	18
Team							0	1	1			0		0				
Totals				19-39	1-11	6-11	9	16	25	4	11	45	11	8	8	2	1	18

Shooting By Period		
1st FG%	10-18	55.6%
3PT%	1-5	20.0%
FT%	3-6	50%
2nd FG%	9-21	42.9%
3PT%	0-6	0.0%
FT%	3-5	60%
GM FG%	19-39	48.7%
3PT%	1-11	9.1%
FT%	6-11	54.5%

Dead Ball Rebounds: 3, 0

Technical Fouls::NONE

	AAMU	VANDY
Biggest lead	0 (1 st 10:00)	18 (2 nd 0:16)
Best Scoring Run	5 (1 st 1:12)	10 (1 st 2:43)
Lead Changes	0	
Times Tied	1	
Time with Lead	00:00	18:51

Points from	AAMU	VANDY
Turnovers	2	11
Paint	16	32
Second Chance	6	15
Fast Breaks	9	13
Bench	10	11

	Period by Period Scoring				
	1st	2nd	3rd	4th	TOT
AAMU	16	11	19	18	64
VANDY	24	21	22	26	93



Officials: Margaret Tieman, Kristen Bell, Charles Watson

Period 3

Quarter Starters:

VANDY	1 Blakes M	10 Nwaba J	11 Oliver J	12 Pierre K	23 Moore I
AAMU	0 Burgin D	2 Harris-Smith J	3 Wilson A	4 Rittenberry K	24 Pendleton L

Game Time	VANDY	Score	Diff	AAMU
10:00	4 GREENE M substitution out			
10:00	5 KAPINUS L substitution out			
10:00	1 BLAKES M substitution in			
10:00	10 NWABA J substitution in			
10:00				1 WILKERSON M substitution out
10:00				11 PALMER A substitution out
10:00				0 BURGIN D substitution in
10:00				3 WILSON A substitution in
09:46		45-29	16	24 PENDLETON L 2pt FG in the paint, driving layup made (4)
09:46				2 HARRIS-SMITH J assist (3)
09:45	12 PIERRE K foul shooting (1 - 1)			24 PENDLETON L foul drawn (1)
09:45		45-30	15	24 PENDLETON L free throw 1 - 1 made (5)
09:31	11 OLIVER J 2pt FG in the paint, hook shot made (2)	47-30	17	
09:31	12 PIERRE K assist (2)			
09:07		47-32	15	0 BURGIN D 2pt FG in the paint, floating jump shot made (2)
08:40	12 PIERRE K 2pt FG outside the paint, pull up jump shot made (21)	49-32	17	
08:40	23 MOORE I assist (4)			
08:23	12 PIERRE K steal (3)			0 BURGIN D turnover bad pass (1)
08:18	23 MOORE I 2pt FG fast break from turnover in the paint, layup made (7)	51-32	19	
08:18	12 PIERRE K assist (3)			
08:01		51-34	17	24 PENDLETON L 2pt FG in the paint, pull up jump shot made (7)
07:45	12 PIERRE K 2pt FG in the paint, layup made (23)	53-34	19	
07:45	11 OLIVER J assist (5)			
07:17	12 PIERRE K foul personal (2 - 2)			2 HARRIS-SMITH J foul drawn (3)
07:14		53-36	17	3 WILSON A 2pt FG in the paint, layup made (8)
07:14				2 HARRIS-SMITH J assist (4)
07:05	12 PIERRE K 2pt FG in the paint, driving layup made (25)	55-36	19	
07:05	1 BLAKES M assist (1)			
06:53	jump ball situation			
06:53	23 MOORE I steal (1)			24 PENDLETON L turnover lost ball (3)
06:41	10 NWABA J 3pt FG from turnover, jump shot blocked			
06:41				3 WILSON A block (1)
06:39				defensive rebound (18)
06:25				3 WILSON A turnover bad pass (2)
06:15	23 MOORE I 2pt FG from turnover outside the paint, pull up jump shot missed			
06:11	1 BLAKES M offensive rebound (3)			
06:01				0 BURGIN D substitution out
06:01				12 HARVEY T substitution in
06:01				3 WILSON A substitution out
06:01				11 PALMER A substitution in



Official Basketball Play by Play - 3rd Period
Alabama A&M at Vanderbilt
 12/29/24 Memorial Gymnasium (Vanderbilt), Nashville
 2024-25 Women's Basketball

Game Time: 11:00 AM
Game Duration: 1:53
Attendance: 3,061

Officials: Margaret Tieman, Kristen Bell, Charles Watson

Game Time	VANDY	Score	Diff	AAMU
05:53	1 BLAKES M 2pt FG from turnover second chance outside the paint, pull up jump shot missed			
05:49	23 MOORE I offensive rebound (3)			
05:47	23 MOORE I 2pt FG from turnover second chance outside the paint, pull up jump shot made (9)	57-36	21	
05:29	10 NWABA J foul drawn (2)			11 PALMER A foul offensive (1 - 1)
05:29				11 PALMER A turnover offensive (1)
05:29	1 BLAKES M substitution out			
05:29	10 NWABA J substitution out			
05:29	4 GREENE M substitution in			
05:29	5 KAPINUS L substitution in			
05:14	4 GREENE M 3pt FG from turnover, jump shot made (12)	60-36	24	
05:14	23 MOORE I assist (5)			
05:09				Timeout 30 Sec
05:09				Timeout media
05:09				11 PALMER A substitution out
05:09				1 WILKERSON M substitution in
05:02				4 RITTENBERRY K 2pt FG in the paint, layup missed
05:00	defensive rebound (28)			
05:00				Timeout media
04:46	23 MOORE I 3pt FG , jump shot made (12)	63-36	27	
04:46	5 KAPINUS L assist (3)			
04:26				4 RITTENBERRY K 2pt FG in the paint, layup missed
04:19				4 RITTENBERRY K offensive rebound (1)
04:19				4 RITTENBERRY K 2pt FG second chance in the paint, tip-in layup missed
04:18				4 RITTENBERRY K offensive rebound (2)
04:18		63-38	25	4 RITTENBERRY K 2pt FG second chance in the paint, tip-in layup made (9)
04:06	11 OLIVER J 2pt FG in the paint, driving layup missed			
04:04				12 HARVEY T defensive rebound (1)
03:59		63-40	23	4 RITTENBERRY K 2pt FG in the paint, layup made (11)
03:59				2 HARRIS-SMITH J assist (5)
03:35	5 KAPINUS L 2pt FG in the paint, layup made (2)	65-40	25	
03:35	11 OLIVER J assist (6)			
03:19		65-42	23	2 HARRIS-SMITH J 2pt FG in the paint, pull up jump shot made (4)
03:01	11 OLIVER J turnover bad pass (1)			12 HARVEY T steal (1)
02:51				24 PENDLETON L 3pt FG from turnover, jump shot missed
02:47	11 OLIVER J defensive rebound (6)			
02:41	4 GREENE M 3pt FG , jump shot missed			
02:38	12 PIERRE K offensive rebound (5)			
02:32	11 OLIVER J 2pt FG second chance in the paint, pull up jump shot made (4)	67-42	25	
02:32	12 PIERRE K assist (4)			
02:01	5 KAPINUS L foul shooting (1 - 3)			24 PENDLETON L foul drawn (2)
02:01	11 OLIVER J substitution out			
02:01	12 PIERRE K substitution out			
02:01	14 MITCHELL A substitution in			
02:01	24 MAKURAT A substitution in			
02:01				2 HARRIS-SMITH J substitution out



Official Basketball Play by Play - 3rd Period
Alabama A&M at Vanderbilt
 12/29/24 Memorial Gymnasium (Vanderbilt), Nashville
 2024-25 Women's Basketball

Game Time: 11:00 AM
Game Duration: 1:53
Attendance: 3,061

Officials: Margaret Tieman, Kristen Bell, Charles Watson

Game Time	VANDY	Score	Diff	AAMU
02:01				4 RITTENBERRY K substitution out
02:01				8 ALLEN N substitution in
02:01				11 PALMER A substitution in
02:01				24 PENDLETON L free throw 1 - 2 missed
02:01				offensive dead ball rebound (3)
02:01		67-43	24	24 PENDLETON L free throw 2 - 2 made (8)
01:49	14 MITCHELL A 2pt FG in the paint, layup missed			
01:47	offensive rebound (31)			
01:47				11 PALMER A substitution out
01:47				4 RITTENBERRY K substitution in
01:47				12 HARVEY T substitution out
01:47				21 SHAKESPEARE L substitution in
01:39	14 MITCHELL A turnover lost ball (2)			
01:31		67-46	21	1 WILKERSON M 3pt FG fast break from turnover, pull up jump shot made (8)
01:19	23 MOORE I 3pt FG , jump shot missed			
01:16				24 PENDLETON L defensive rebound (1)
01:07				1 WILKERSON M 3pt FG , jump shot missed
01:01	14 MITCHELL A defensive rebound (2)			
00:57	4 GREENE M turnover lost ball (3)			
00:57				4 RITTENBERRY K substitution out
00:57				12 HARVEY T substitution in
00:57				12 HARVEY T substitution out
00:57				21 SHAKESPEARE L substitution out
00:57				3 WILSON A substitution in
00:57				11 PALMER A substitution in
00:27				1 WILKERSON M 2pt FG from turnover in the paint, pull up jump shot missed
00:23	14 MITCHELL A defensive rebound (3)			
00:06	23 MOORE I 2pt FG outside the paint, pull up jump shot missed			
00:00				3 WILSON A defensive rebound (5)
END OF PERIOD				
VANDY 67-46 AAMU				



Officials: Margaret Tieman, Kristen Bell, Charles Watson

Alabama A&M - 19

NO.	Name	F/G	Min	FG			Rebounds			Fouls		TP	AS	TO	ST	Blocks		+/-
				M-A	M-A	M-A	OR	DR	TOT	PF	FD					BS	BA	
3	Alisha Wilson	F	04:56	1-1	0-0	0-0	0	1	1	0	0	2	0	1	0	1	0	-1
0	Darian Burgin	G	03:59	1-1	0-0	0-0	0	0	0	0	0	2	0	1	0	0	0	-1
2	Jaiyah Harris-Smith	G	07:59	1-1	0-0	0-0	0	0	0	0	1	2	3	0	0	0	0	-7
4	Kourtney Rittenberry	G	08:49	2-5	0-0	0-0	2	0	2	0	0	4	0	0	0	0	0	-4
24	Lauryn Pendleton	G	10:00	2-3	0-1	2-3	0	1	1	0	2	6	0	1	0	0	0	-3
11	Aniya Palmer		02:03	0-0	0-0	0-0	0	0	0	1	0	0	0	1	0	0	0	-4
12	Tia Harvey		04:14	0-0	0-0	0-0	0	1	1	0	0	0	0	0	1	0	0	-5
1	Mailyn Wilkerson		05:09	1-3	1-2	0-0	0	0	0	0	0	3	0	0	0	0	0	3
8	Nyla Allen		02:01	0-0	0-0	0-0	0	0	0	0	0	0	0	0	0	0	0	4
21	LaCambria Shakespeare		00:50	0-0	0-0	0-0	0	0	0	0	0	0	0	0	0	0	0	3
Team							0	1	1			0		0				
Totals				8-14	1-3	2-3	2	4	6	1	3	19	3	4	1	1	0	-3

Shooting By Period		
3 rd FG%	8-14	57.1%
3PT%	1-3	33.3%
FT%	2-3	66.7%
GM FG%	8-14	57.1%
3PT%	1-3	33.3%
FT%	2-3	66.7%

Dead Ball Rebounds: 1, 0

Technical Fouls::NONE

Vanderbilt - 22

NO.	Name	F/G	Min	FG			Rebounds			Fouls		TP	AS	TO	ST	Blocks		+/-
				M-A	M-A	M-A	OR	DR	TOT	PF	FD					BS	BA	
10	Jane Nwaba	F	04:31	0-1	0-1	0-0	0	0	0	0	1	0	0	0	0	0	1	3
12	Khamil Pierre	F	07:59	3-3	0-0	0-0	1	0	1	2	0	6	3	0	1	0	0	7
1	Mikayla Blakes	G	04:31	0-1	0-0	0-0	1	0	1	0	0	0	1	0	0	0	0	3
11	Jordyn Oliver	G	07:59	2-3	0-0	0-0	0	1	1	0	0	4	2	1	0	0	0	7
23	Iyana Moore	G	10:00	3-6	1-2	0-0	1	0	1	0	0	7	2	0	1	0	0	3
4	Madison Greene		05:29	1-2	1-2	0-0	0	0	0	0	0	3	0	1	0	0	0	0
5	Leilani Kapinus		05:29	1-1	0-0	0-0	0	0	0	1	0	2	1	0	0	0	0	0
14	Aiyana Mitchell		02:01	0-1	0-0	0-0	0	2	2	0	0	0	0	1	0	0	0	-4
24	Aga Makurat		02:01	0-0	0-0	0-0	0	0	0	0	0	0	0	0	0	0	0	-4
Team							1	1	2			0		0				
Totals				10-18	2-5	0-0	4	4	8	3	1	22	9	3	2	0	1	3

Shooting By Period		
3 rd FG%	10-18	55.6%
3PT%	2-5	40.0%
FT%	0-0	0%
GM FG%	10-18	55.6%
3PT%	2-5	40.0%
FT%	0-0	0.0%

Dead Ball Rebounds: 0, 0

Technical Fouls::NONE

	AAMU	VANDY
Biggest lead	0 (1 st 10:00)	27 (3 rd 4:46)
Best Scoring Run	4(3 rd 3:59)	10(3 rd 4:46)
Lead Changes	0	
Times Tied	0	
Time with Lead	00:00	09:46

	AAMU	VANDY
Points from		
Turnovers	3	7
Paint	14	12
Second Chance	2	4
Fast Breaks	3	2
Bench	3	5

	Period by Period Scoring				
	1st	2nd	3rd	4th	TOT
AAMU	16	11	19	18	64
VANDY	24	21	22	26	93



Officials: Margaret Tieman, Kristen Bell, Charles Watson

Period 4

Quarter Starters:

VANDY	4 Greene M	10 Nwaba J	11 Oliver J	12 Pierre K	23 Moore I
AAMU	1 Wilkerson M	2 Harris-Smith J	3 Wilson A	11 Palmer A	24 Pendleton L

Game Time	VANDY	Score	Diff	AAMU
10:00	5 KAPINUS L substitution out			
10:00	14 MITCHELL A substitution out			
10:00	24 MAKURAT A substitution out			
10:00	10 NWABA J substitution in			
10:00	11 OLIVER J substitution in			
10:00	12 PIERRE K substitution in			
10:00				8 ALLEN N substitution out
10:00				2 HARRIS-SMITH J substitution in
09:39		67-48	19	3 WILSON A 2pt FG outside the paint, turnaround jump shot made (10)
09:15	10 NWABA J 2pt FG in the paint, layup made (7)	69-48	21	
09:15	23 MOORE I assist (6)			
09:03				1 WILKERSON M 3pt FG , jump shot missed
08:59	12 PIERRE K defensive rebound (6)			
08:51	12 PIERRE K 2pt FG outside the paint, pull up jump shot missed			
08:49				3 WILSON A defensive rebound (6)
08:32	4 GREENE M steal (1)			11 PALMER A turnover bad pass (2)
08:25	23 MOORE I 2pt FG fast break from turnover outside the paint, step back jump shot made (14)	71-48	23	
08:25	4 GREENE M assist (1)			
08:07	12 PIERRE K steal (4)			2 HARRIS-SMITH J turnover bad pass (3)
08:01	12 PIERRE K 2pt FG fast break from turnover in the paint, layup made (27)	73-48	25	
08:01	23 MOORE I assist (7)			
07:34				24 PENDLETON L 2pt FG outside the paint, pull up jump shot missed
07:30	11 OLIVER J defensive rebound (7)			
07:26	23 MOORE I 2pt FG fast break in the paint, driving layup made (16)	75-48	27	
07:26	11 OLIVER J assist (7)			
07:08		75-50	25	24 PENDLETON L 2pt FG in the paint, pull up jump shot made (10)
07:08				2 HARRIS-SMITH J assist (6)
06:47	jump ball situation			
06:47				2 HARRIS-SMITH J substitution out
06:47				11 PALMER A substitution out
06:47				4 RITTENBERRY K substitution in
06:47				8 ALLEN N substitution in
06:26	10 NWABA J foul drawn (3)			24 PENDLETON L foul shooting (2 - 1)
06:26	10 NWABA J free throw 1 - 2 made (8)	76-50	26	
06:26	10 NWABA J free throw 2 - 2 made (9)	77-50	27	
06:18				1 WILKERSON M 3pt FG , step back jump shot missed
06:14				4 RITTENBERRY K offensive rebound (3)
06:12				4 RITTENBERRY K 2pt FG second chance in the paint, layup missed



Official Basketball Play by Play - 4th Period
Alabama A&M at Vanderbilt
 12/29/24 Memorial Gymnasium (Vanderbilt), Nashville
 2024-25 Women's Basketball

Game Time: 11:00 AM
Game Duration: 1:53
Attendance: 3,061

Officials: Margaret Tieman, Kristen Bell, Charles Watson

Game Time	VANDY	Score	Diff	AAMU
06:06	23 MOORE I defensive rebound (4)			
06:05	23 MOORE I turnover bad pass (2)			3 WILSON A steal (1)
05:59		77-53	24	1 WILKERSON M 3pt FG from turnover, jump shot made (11)
05:59				3 WILSON A assist (1)
05:46	12 PIERRE K 2pt FG in the paint, layup made (29)	79-53	26	
05:46	11 OLIVER J assist (8)			
05:32				24 PENDLETON L 2pt FG in the paint, step back jump shot missed
05:27	12 PIERRE K defensive rebound (7)			
05:22	12 PIERRE K 2pt FG in the paint, driving layup missed			
05:20				3 WILSON A defensive rebound (7)
05:13	11 OLIVER J foul personal (2 - 1)			24 PENDLETON L foul drawn (3)
05:13	11 OLIVER J substitution out			
05:13	12 PIERRE K substitution out			
05:13	14 MITCHELL A substitution in			
05:13	24 MAKURAT A substitution in			
05:09		79-55	24	3 WILSON A 2pt FG in the paint, turnaround jump shot made (12)
04:52	24 MAKURAT A 3pt FG , jump shot made (3)	82-55	27	
04:52	4 GREENE M assist (2)			
04:34				3 WILSON A 2pt FG in the paint, pull up jump shot missed
04:30	14 MITCHELL A defensive rebound (4)			
04:23	24 MAKURAT A 3pt FG , jump shot missed			
04:20				3 WILSON A defensive rebound (8)
04:13		82-57	25	24 PENDLETON L 2pt FG in the paint, driving layup made (12)
04:13				1 WILKERSON M assist (1)
04:01	14 MITCHELL A 2pt FG in the paint, turnaround jump shot made (4)	84-57	27	
04:01	14 MITCHELL A foul drawn (1)			3 WILSON A foul shooting (4 - 2)
04:01	Timeout media			
04:01	4 GREENE M substitution out			
04:01	23 MOORE I substitution out			
04:01	2 BROWN J substitution in			
04:01	13 PISSOTT J substitution in			
04:01				3 WILSON A substitution out
04:01				8 ALLEN N substitution out
04:01				24 PENDLETON L substitution out
04:01				2 HARRIS-SMITH J substitution in
04:01				11 PALMER A substitution in
04:01				12 HARVEY T substitution in
04:01	14 MITCHELL A free throw 1 - 1 missed			
03:59				11 PALMER A defensive rebound (6)
03:48	24 MAKURAT A steal (1)			1 WILKERSON M turnover bad pass (3)
03:43	24 MAKURAT A 2pt FG fast break from turnover in the paint, driving layup made (5)	86-57	29	
03:43	2 BROWN J assist (1)			
03:23		86-59	27	4 RITTENBERRY K 2pt FG in the paint, layup made (13)
03:23				2 HARRIS-SMITH J assist (7)
03:06	2 BROWN J turnover bad pass (1)			
03:06				4 RITTENBERRY K substitution out



Official Basketball Play by Play - 4th Period
Alabama A&M at Vanderbilt
 12/29/24 Memorial Gymnasium (Vanderbilt), Nashville
 2024-25 Women's Basketball

Game Time: 11:00 AM
Game Duration: 1:53
Attendance: 3,061

Officials: Margaret Tieman, Kristen Bell, Charles Watson

Game Time	VANDY	Score	Diff	AAMU
03:06				12 HARVEY T substitution out
03:06				3 WILSON A substitution in
03:06				22 SANDERS S substitution in
02:50				22 SANDERS S 2pt FG from turnover in the paint, driving layup missed
02:48				3 WILSON A offensive rebound (9)
02:48	jump ball situation			
02:45	10 NWABA J foul shooting (2 - 2)			3 WILSON A foul drawn (2)
02:43				3 WILSON A free throw 1 - 2 missed
02:43				offensive dead ball rebound (4)
02:43		86-60	26	3 WILSON A free throw 2 - 2 made (13)
02:33	14 MITCHELL A 2pt FG in the paint, layup made (6)	88-60	28	
02:33	10 NWABA J assist (2)			
02:09				1 WILKERSON M 3pt FG , pull up jump shot missed
02:04	2 BROWN J defensive rebound (1)			
02:04	jump ball situation			
01:57	24 MAKURAT A 3pt FG , jump shot made (8)	91-60	31	
01:57	2 BROWN J assist (2)			
01:51				Timeout 60 Sec
01:51	14 MITCHELL A substitution out			
01:51	30 WILSON T substitution in			
01:26				3 WILSON A 2pt FG outside the paint, turnaround jump shot missed
01:23				3 WILSON A offensive rebound (10)
01:19				22 SANDERS S 3pt FG second chance, jump shot missed
01:15	10 NWABA J defensive rebound (3)			
01:13	10 NWABA J turnover lost ball (1)			2 HARRIS-SMITH J steal (2)
00:47				1 WILKERSON M 3pt FG from turnover, pull up jump shot missed
00:42	defensive rebound (41)			
00:42				3 WILSON A substitution out
00:42				11 PALMER A substitution out
00:42				4 RITTENBERRY K substitution in
00:42				12 HARVEY T substitution in
00:36	2 BROWN J turnover bad pass (2)			4 RITTENBERRY K steal (2)
00:32		91-62	29	4 RITTENBERRY K 2pt FG fast break from turnover in the paint, driving layup made (15)
00:14	13 PISSOTT J 2pt FG in the paint, layup made (2)	93-62	31	
00:14	30 WILSON T assist (1)			
00:02		93-64	29	22 SANDERS S 2pt FG in the paint, floating jump shot made (2)
END OF GAME				
VANDY 93-64 AAMU				



Officials: Margaret Tieman, Kristen Bell, Charles Watson

Alabama A&M - 18

NO.	Name	F	Min	FG			Rebounds			Fouls		TP	AS	TO	ST	Blocks		+/-
				M-A	M-A	M-A	OR	DR	TOT	PF	FD					BS	BA	
3	Alisha Wilson	F	08:22	2-4	0-0	1-2	2	3	5	1	1	5	1	0	1	0	0	-10
0	Darian Burgin	G	00:00	0-0	0-0	0-0	0	0	0	0	0	0	0	0	0	0	0	0
2	Jaiyah Harris-Smith	G	07:14	0-0	0-0	0-0	0	0	0	0	0	0	2	1	1	0	0	-6
4	Kourtney Rittenberry	G	04:24	2-3	0-0	0-0	1	0	1	0	0	4	0	0	1	0	0	0
24	Lauryn Pendleton	G	05:59	2-4	0-0	0-0	0	0	0	1	1	4	0	0	0	0	0	-6
1	Mailyn Wilkerson		10:00	1-5	1-5	0-0	0	0	0	0	0	3	1	1	0	0	0	-8
8	Nyla Allen		02:46	0-0	0-0	0-0	0	0	0	0	0	0	0	0	0	0	0	-2
11	Aniya Palmer		06:31	0-0	0-0	0-0	0	1	1	0	0	0	0	1	0	0	0	-8
12	Tia Harvey		01:38	0-0	0-0	0-0	0	0	0	0	0	0	0	0	0	0	0	2
22	Shelomi Sanders		03:06	1-3	0-1	0-0	0	0	0	0	0	2	0	0	0	0	0	-2
Team							0	0	0			0						
Totals				8-19	1-6	1-2	3	4	7	2	2	18	4	3	3	0	0	-8

Shooting By Period		
4 th FG%	8-19	42.1%
3PT%	1-6	16.7%
FT%	1-2	50%
GM FG%	8-19	42.1%
3PT%	1-6	16.7%
FT%	1-2	50.0%

Dead Ball Rebounds: 1, 0

Technical Fouls::NONE

Vanderbilt - 26

NO.	Name	F	Min	FG			Rebounds			Fouls		TP	AS	TO	ST	Blocks		+/-
				M-A	M-A	M-A	OR	DR	TOT	PF	FD					BS	BA	
10	Jane Nwaba	F	10:00	1-1	0-0	2-2	0	1	1	1	1	4	1	1	0	0	0	8
12	Khamil Pierre	F	04:47	2-4	0-0	0-0	0	2	2	0	0	4	0	0	1	0	0	5
1	Mikayla Blakes	G	00:00	0-0	0-0	0-0	0	0	0	0	0	0	0	0	0	0	0	0
11	Jordyn Oliver	G	04:47	0-0	0-0	0-0	0	1	1	1	0	0	2	0	0	0	0	5
23	Iyana Moore	G	05:59	2-2	0-0	0-0	0	1	1	0	0	4	2	1	0	0	0	6
4	Madison Greene		05:59	0-0	0-0	0-0	0	0	0	0	0	0	2	0	1	0	0	6
5	Leilani Kapinus		00:00	0-0	0-0	0-0	0	0	0	0	0	0	0	0	0	0	0	0
14	Aiyana Mitchell		03:22	2-2	0-0	0-1	0	1	1	0	1	4	0	0	0	0	0	5
24	Aga Makurat		05:13	3-4	2-3	0-0	0	0	0	0	0	8	0	0	1	0	0	3
2	Jada Brown		04:01	0-0	0-0	0-0	0	1	1	0	0	0	2	2	0	0	0	2
13	Justine Pissott		04:01	1-1	0-0	0-0	0	0	0	0	0	2	0	0	0	0	0	2
30	Trinity Wilson		01:51	0-0	0-0	0-0	0	0	0	0	0	0	1	0	0	0	0	-2
Team							0	1	1			0		0				
Totals				11-14	2-3	2-3	0	8	8	2	2	26	10	4	3	0	0	8

Shooting By Period		
4 th FG%	11-14	78.6%
3PT%	2-3	66.7%
FT%	2-3	66.7%
GM FG%	11-14	78.6%
3PT%	2-3	66.7%
FT%	2-3	66.7%

Dead Ball Rebounds: 0, 0

Technical Fouls::NONE

	AAMU	VANDY
Biggest lead	0 (1 st 10:00)	31 (4 th 1:57)
Best Scoring Run	3(4 th 5:59)	8(4 th 7:26)
Lead Changes	0	
Times Tied	0	
Time with Lead	00:00	09:39

	AAMU	VANDY
Points from		
Turnovers	6	6
Paint	12	16
Second Chance	1	0
Fast Breaks	2	8
Bench	5	14

	Period by Period Scoring				
	1st	2nd	3rd	4th	TOT
AAMU	16	11	19	18	64
VANDY	24	21	22	26	93



Officials: Margaret Tieman, Kristen Bell, Charles Watson

Alabama A&M - 37

NO.	Name	F/G	Min	FG			Rebounds			Fouls		TP	AS	TO	ST	Blocks		+/-
				M-A	M-A	M-A	OR	DR	TOT	PF	FD					BS	BA	
3	Alisha Wilson	F	13:19	3-5	0-0	1-2	2	4	6	1	1	7	1	1	1	1	0	-11
0	Darian Burgin	G	03:59	1-1	0-0	0-0	0	0	0	0	0	2	0	1	0	0	0	-1
2	Jaiyah Harris-Smith	G	15:13	1-1	0-0	0-0	0	0	0	0	1	2	5	1	1	0	0	-13
4	Kourtney Rittenberry	G	13:13	4-8	0-0	0-0	3	0	3	0	0	8	0	0	1	0	0	-4
24	Lauryn Pendleton	G	15:59	4-7	0-1	2-3	0	1	1	1	3	10	0	1	0	0	0	-9
11	Aniya Palmer		08:35	0-0	0-0	0-0	0	1	1	1	0	0	0	2	0	0	0	-12
12	Tia Harvey		05:52	0-0	0-0	0-0	0	1	1	0	0	0	0	0	1	0	0	-3
1	Mailyn Wilkerson		15:09	2-8	2-7	0-0	0	0	0	0	0	6	1	1	0	0	0	-5
8	Nyla Allen		04:47	0-0	0-0	0-0	0	0	0	0	0	0	0	0	0	0	0	2
21	LaCambria Shakespeare		00:50	0-0	0-0	0-0	0	0	0	0	0	0	0	0	0	0	0	3
22	Shelomi Sanders		03:06	1-3	0-1	0-0	0	0	0	0	0	2	0	0	0	0	0	-2
Team							0	1	1			0		0				
Totals				16-33	2-9	3-5	5	8	13	3	5	37	7	7	4	1	0	-11

Shooting By Period		
3 rd FG%	8-14	57.1%
3PT%	1-3	33.3%
FT%	2-3	66.7%
4 th FG%	8-19	42.1%
3PT%	1-6	16.7%
FT%	1-2	50%
GM FG%	16-33	48.5%
3PT%	2-9	22.2%
FT%	3-5	60.0%

Dead Ball Rebounds: 2, 0

Technical Fouls::NONE

Vanderbilt - 48

NO.	Name	F/G	Min	FG			Rebounds			Fouls		TP	AS	TO	ST	Blocks		+/-
				M-A	M-A	M-A	OR	DR	TOT	PF	FD					BS	BA	
10	Jane Nwaba	F	14:31	1-2	0-1	2-2	0	1	1	1	2	4	1	1	0	0	1	11
12	Khamil Pierre	F	12:46	5-7	0-0	0-0	1	2	3	2	0	10	3	0	2	0	0	12
1	Mikayla Blakes	G	04:31	0-1	0-0	0-0	1	0	1	0	0	0	1	0	0	0	0	3
11	Jordyn Oliver	G	12:46	2-3	0-0	0-0	0	2	2	1	0	4	4	1	0	0	0	12
23	Iyana Moore	G	15:59	5-8	1-2	0-0	1	1	2	0	0	11	4	1	1	0	0	9
4	Madison Greene		11:28	1-2	1-2	0-0	0	0	0	0	0	3	2	1	1	0	0	6
5	Leilani Kapinus		05:29	1-1	0-0	0-0	0	0	0	1	0	2	1	0	0	0	0	0
14	Aiyana Mitchell		05:23	2-3	0-0	0-1	0	3	3	0	1	4	0	1	0	0	0	1
24	Aga Makurat		07:14	3-4	2-3	0-0	0	0	0	0	0	8	0	0	1	0	0	-1
2	Jada Brown		04:01	0-0	0-0	0-0	0	1	1	0	0	0	2	2	0	0	0	2
13	Justine Pissott		04:01	1-1	0-0	0-0	0	0	0	0	0	2	0	0	0	0	0	2
30	Trinity Wilson		01:51	0-0	0-0	0-0	0	0	0	0	0	0	1	0	0	0	0	-2
Team							1	2	3			0		0				
Totals				21-32	4-8	2-3	4	12	16	5	3	48	19	7	5	0	1	11

Shooting By Period		
3 rd FG%	10-18	55.6%
3PT%	2-5	40.0%
FT%	0-0	0%
4 th FG%	11-14	78.6%
3PT%	2-3	66.7%
FT%	2-3	66.7%
GM FG%	21-32	65.6%
3PT%	4-8	50.0%
FT%	2-3	66.7%

Dead Ball Rebounds: 0, 0

Technical Fouls::NONE

	AAMU	VANDY
Biggest lead	0 (1 st 10:00)	31 (4 th 1:57)
Best Scoring Run	6(4 th 9:39)	10(3 rd 4:46)
Lead Changes	0	
Times Tied	0	
Time with Lead	00:00	19:46

	AAMU	VANDY
Points from		
Turnovers	9	13
Paint	26	28
Second Chance	3	4
Fast Breaks	5	10
Bench	8	19

	Period by Period Scoring				
	1st	2nd	3rd	4th	TOT
AAMU	16	11	19	18	64
VANDY	24	21	22	26	93



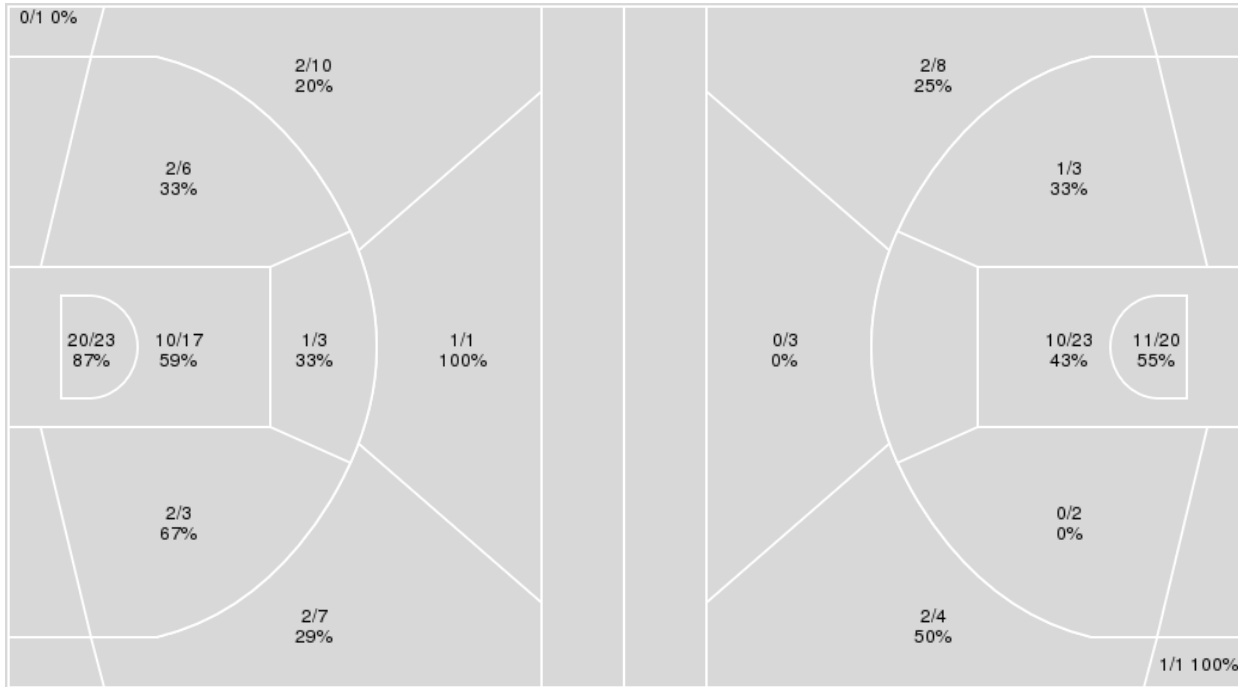
Officials: Margaret Tieman, Kristen Bell, Charles Watson

{ Players => 1, 2, 4, 5, 10, 11, 12, 13, 14, 23, 24, 30, 35; } FG Types => All; Results => All;

{ Players => 0, 1, 2, 3, 4, 5, 6, 8, 11, 12, 15, 21, 22, 23, 24, 25; } FG Types => All; Results => All;

Vanderbilt

Alabama A&M



Vanderbilt	M/A	%
Field Goals	40/71	56
2 Points	35/52	67
3 Points	5/19	26
Free Throws	8/14	57

Alabama A&M	M/A	%
Field Goals	27/64	42
2 Points	22/48	46
3 Points	5/16	31
Free Throws	5/9	56



Alabama A&M at Vanderbilt

12/29/24 Memorial Gymnasium (Vanderbilt), Nashville
2024-25 Women's Basketball

Officials: Margaret Tieman, Kristen Bell, Charles Watson

Alabama A&M

No	Name	Mins		Score		Points Diff		Points per Min		Assists		Rebounds		Steals		Turnovers	
		On	Off	On	Off	On	Off	On	Off	On	Off	On	Off	On	Off	On	Off
0	Darian Burgin	14:49	25:11	31 - 36	33 - 57	-5	-24	2.09	1.31	6	7	11	19	2	7	9	10
1	Mailyn Wilkerson	25:49	14:11	39 - 56	25 - 37	-17	-12	1.51	1.76	9	4	19	11	7	2	9	10
2	Jaiyah Harris-Smith	34:23	05:37	53 - 83	11 - 10	-30	1	1.54	1.96	11	2	24	6	8	1	19	0
3	Alisha Wilson	22:19	17:41	37 - 52	27 - 41	-15	-14	1.66	1.53	6	7	17	13	4	5	10	9
4	Kourtney Rittenberry	23:46	16:15	45 - 61	19 - 32	-16	-13	1.89	1.17	9	4	17	13	5	4	11	8
8	Nyla Allen	05:37	34:23	11 - 10	53 - 83	1	-30	1.96	1.54	2	11	6	24	1	8	0	19
11	Aniya Palmer	17:25	22:35	21 - 35	43 - 58	-14	-15	1.21	1.90	7	6	13	17	4	5	9	10
12	Tia Harvey	13:56	26:04	25 - 34	39 - 59	-9	-20	1.79	1.50	5	8	13	17	4	5	9	10
21	LaCambria Shakespeare	04:49	35:11	3 - 12	61 - 81	-9	-20	0.62	1.73	0	13	3	27	1	8	3	16
22	Shelomi Sanders	04:22	35:38	5 - 10	59 - 83	-5	-24	1.15	1.66	0	13	3	27	2	7	1	18
24	Lauryn Pendleton	32:46	07:14	50 - 76	14 - 17	-26	-3	1.53	1.93	10	3	24	6	7	2	15	4

Vanderbilt

No	Name	Mins		Score		Points Diff		Points per Min		Assists		Rebounds		Steals		Turnovers	
		On	Off	On	Off	On	Off	On	Off	On	Off	On	Off	On	Off	On	Off
1	Mikayla Blakes	17:01	22:59	38 - 34	55 - 30	4	25	2.23	2.39	11	19	15	26	6	7	4	11
2	Jada Brown	04:01	35:59	9 - 7	84 - 57	2	27	2.24	2.33	4	26	3	38	1	12	3	12
4	Madison Greene	24:12	15:48	52 - 34	41 - 30	18	11	2.15	2.59	17	13	26	15	8	5	11	4
5	Leilani Kapinus	18:30	21:30	40 - 22	53 - 42	18	11	2.16	2.47	12	18	24	17	6	7	9	6
10	Jane Nwaba	18:31	21:29	50 - 36	43 - 28	14	15	2.70	2.00	17	13	15	26	6	7	4	11
11	Jordyn Oliver	31:09	08:51	77 - 44	16 - 20	33	-4	2.47	1.81	24	6	34	7	11	2	9	6
12	Khamil Pierre	29:22	10:38	69 - 49	24 - 15	20	9	2.35	2.26	22	8	29	12	11	2	9	6
13	Justine Pissott	04:01	35:59	9 - 7	84 - 57	2	27	2.24	2.33	4	26	3	38	1	12	3	12
14	Aiyana Mitchell	10:24	29:36	24 - 16	69 - 48	8	21	2.31	2.33	8	22	10	31	3	10	5	10
23	Iyana Moore	33:44	06:16	81 - 52	12 - 12	29	0	2.40	1.91	25	5	37	4	11	2	11	4
24	Aga Makurat	07:14	32:46	14 - 15	79 - 49	-1	30	1.94	2.41	5	25	7	34	1	12	5	10
30	Trinity Wilson	01:51	38:09	2 - 4	91 - 60	-2	31	1.08	2.39	1	29	2	39	0	13	2	13

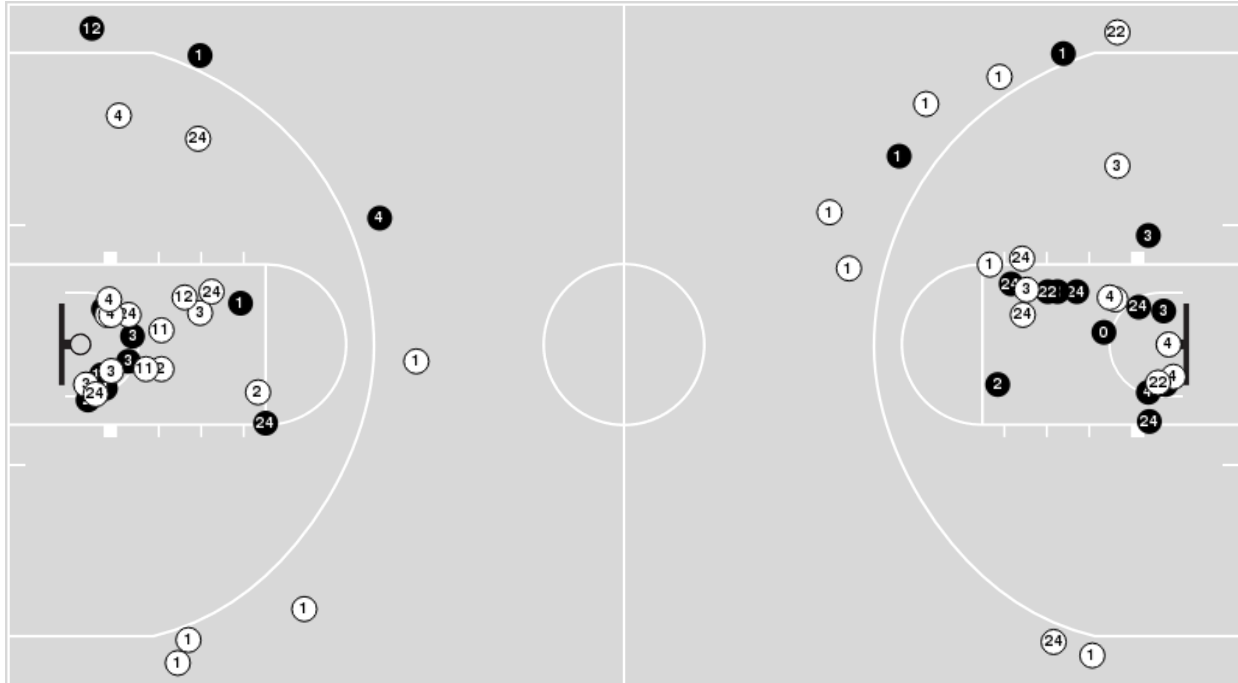


Officials: Margaret Tieman, Kristen Bell, Charles Watson

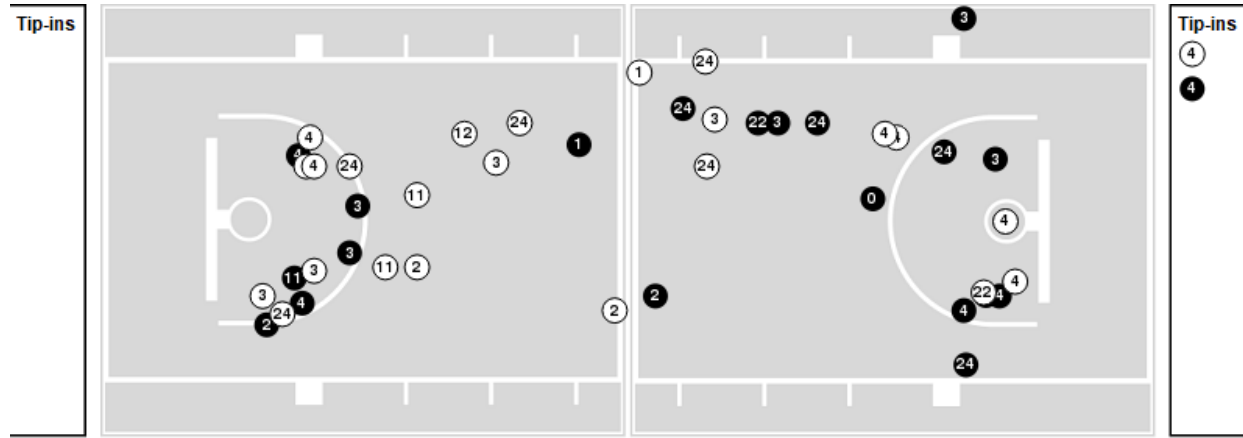
Players => 0, 1, 2, 3, 4, 5, 6, 8, 11, 12, 15, 21, 22, 23, 24, 25FG Types=>AllResults=>All

Alabama A&M

All Field Goals



Blow Up Chart



● Made ○ Missed N - Player Number

Alabama A&M	M/A	%
Field Goals	27/64	42
2 Points	22/48	46
3 Points	5/16	31
Free Throws	5/9	56

Alabama A&M	M/A	%
Points in the Paint	42 (21 / 43)	49
Fast Break Points	14 (6/7)	86
Second Chance Points	9 (6/11)	55
Effective FG%	46	

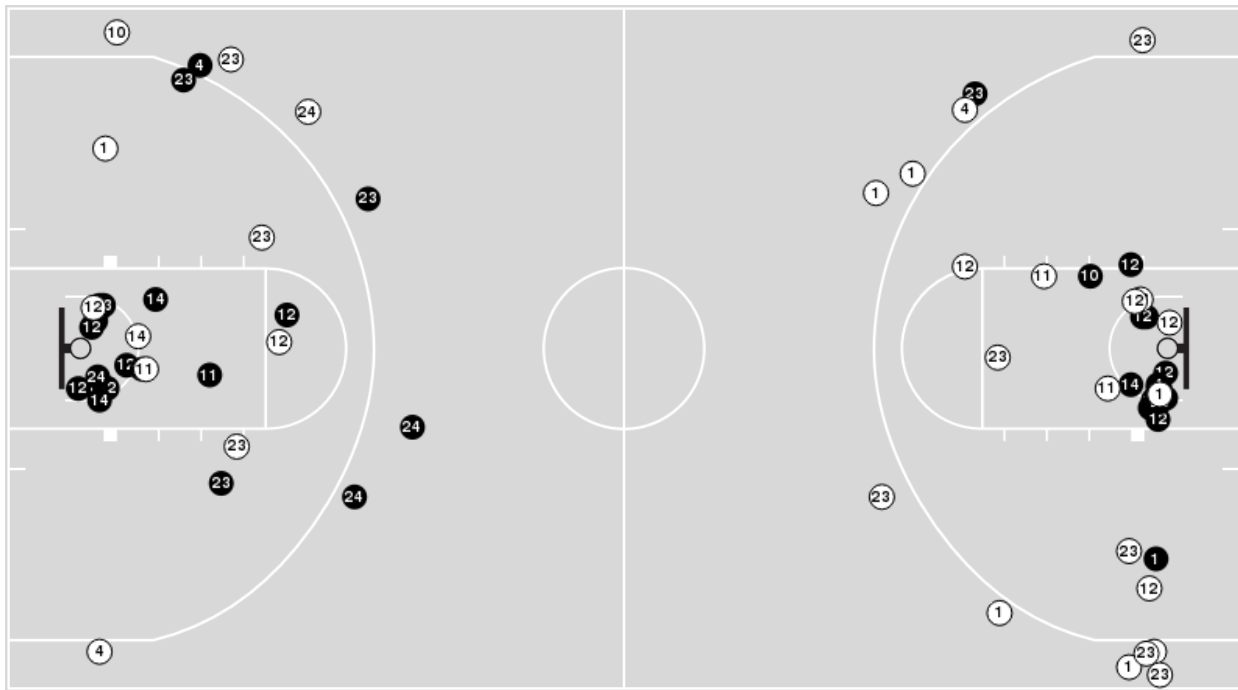


Officials: Margaret Tieman, Kristen Bell, Charles Watson

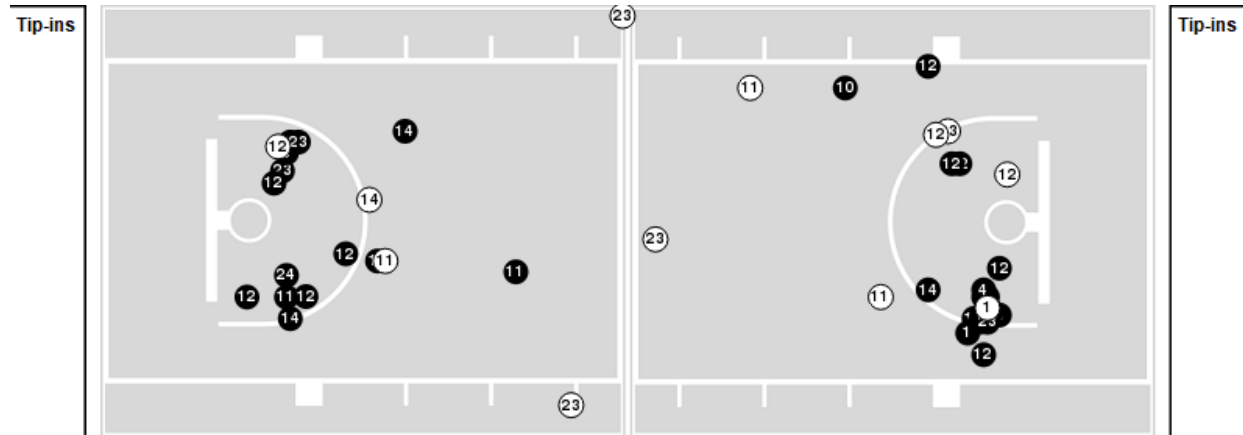
Players => 1, 2, 4, 5, 10, 11, 12, 13, 14, 23, 24, 30, 35FG Types=>AllResults=>All

Vanderbilt

All Field Goals



Blow Up Chart



● Made ○ Missed N - Player Number

Vanderbilt	M/A	%
Field Goals	40/71	56
2 Points	35/52	67
3 Points	5/19	26
Free Throws	8/14	57

Vanderbilt	M/A	%
Points in the Paint	60 (30 / 40)	75
Fast Break Points	23 (12/14)	86
Second Chance Points	19 (11/15)	73
Effective FG%	60	



Officials: Margaret Tieman, Kristen Bell, Charles Watson

Alabama A&M

Lineup	Quarter On	Time On	Quarter Off	Time Off	Time on Court	Score	Score Diff	Reb	Stl	Tov	Ass	PPP
0- Burgin D/ 2- Harris-Smith J/ 3- Wilson A/ 4- Rittenberry K/ 24- Pendleton L/	1	10:00	1	06:48	03:12	7-11	-4	2	0	1	0	1.4000
0- Burgin D/ 2- Harris-Smith J/ 3- Wilson A/ 12- Harvey T/ 24- Pendleton L/	1	06:48	1	04:47	02:01	4-2	2	5	1	2	0	0.8403
1- Wilkerson M/ 2- Harris-Smith J/ 12- Harvey T/ 21- Shakespeare L/ 24- Pendleton L/	1	04:47	1	03:16	01:31	0-6	-6	0	0	1	0	0.0000
1- Wilkerson M/ 2- Harris-Smith J/ 3- Wilson A/ 12- Harvey T/ 24- Pendleton L/	1	03:16	1	03:16	00:00	0-0	0	0	0	0	0	0.0000
1- Wilkerson M/ 2- Harris-Smith J/ 3- Wilson A/ 11- Palmer A/ 24- Pendleton L/	1	03:16	1	02:15	01:01	0-2	-2	1	1	0	0	0.0000
0- Burgin D/ 1- Wilkerson M/ 2- Harris-Smith J/ 3- Wilson A/ 11- Palmer A/	1	02:15	1	01:39	00:36	2-0	2	0	0	0	0	2.0000
0- Burgin D/ 1- Wilkerson M/ 2- Harris-Smith J/ 3- Wilson A/ 12- Harvey T/	1	01:39	1	00:37	01:01	3-2	1	1	0	1	1	1.5000
0- Burgin D/ 1- Wilkerson M/ 3- Wilson A/ 8- Allen N/ 24- Pendleton L/	1	00:37	1	00:08	00:29	0-1	-1	0	0	0	0	0.0000
0- Burgin D/ 1- Wilkerson M/ 8- Allen N/ 11- Palmer A/ 24- Pendleton L/	1	00:08	2	10:00	00:08	0-0	0	0	0	0	0	0.0000
0- Burgin D/ 1- Wilkerson M/ 2- Harris-Smith J/ 11- Palmer A/ 24- Pendleton L/	2	10:00	2	07:41	02:19	4-4	0	1	1	1	2	0.8000
0- Burgin D/ 1- Wilkerson M/ 2- Harris-Smith J/ 11- Palmer A/ 12- Harvey T/	2	07:41	2	07:34	00:07	0-2	-2	0	0	0	0	0.0000
1- Wilkerson M/ 2- Harris-Smith J/ 4- Rittenberry K/ 11- Palmer A/ 12- Harvey T/	2	07:34	2	07:24	00:10	0-0	0	1	0	1	0	0.0000
1- Wilkerson M/ 2- Harris-Smith J/ 4- Rittenberry K/ 11- Palmer A/ 22- Sanders S/	2	07:24	2	06:56	00:28	0-0	0	1	0	0	0	0.0000
1- Wilkerson M/ 2- Harris-Smith J/ 4- Rittenberry K/ 21- Shakespeare L/ 22- Sanders S/	2	06:56	2	06:49	00:07	0-0	0	0	0	0	0	0.0000
2- Harris-Smith J/ 4- Rittenberry K/ 21- Shakespeare L/ 22- Sanders S/ 24- Pendleton L/	2	06:49	2	06:49	00:00	0-0	0	0	0	0	0	0.0000
2- Harris-Smith J/ 3- Wilson A/ 4- Rittenberry K/ 22- Sanders S/ 24- Pendleton L/	2	06:49	2	06:47	00:02	0-0	0	0	0	0	0	0.0000
2- Harris-Smith J/ 3- Wilson A/ 11- Palmer A/ 22- Sanders S/ 24- Pendleton L/	2	06:47	2	06:46	00:01	0-0	0	0	0	1	0	0.0000
0- Burgin D/ 2- Harris-Smith J/ 11- Palmer A/ 21- Shakespeare L/ 24- Pendleton L/	2	06:46	2	06:46	00:00	0-0	0	0	0	0	0	0.0000
0- Burgin D/ 8- Allen N/ 11- Palmer A/ 21- Shakespeare L/ 24- Pendleton L/	2	06:46	2	06:34	00:12	0-0	0	1	0	0	0	0.0000
2- Harris-Smith J/ 3- Wilson A/ 4- Rittenberry K/ 22- Sanders S/ 24- Pendleton L/	2	06:34	2	05:57	00:37	0-2	-2	0	0	0	0	0.0000
2- Harris-Smith J/ 4- Rittenberry K/ 11- Palmer A/ 22- Sanders S/ 24- Pendleton L/	2	05:57	2	05:56	00:01	0-1	-1	0	0	0	0	0.0000
2- Harris-Smith J/ 4- Rittenberry K/ 11- Palmer A/ 12- Harvey T/ 24- Pendleton L/	2	05:56	2	04:58	00:58	5-0	5	1	0	0	2	1.6667
2- Harris-Smith J/ 4- Rittenberry K/ 12- Harvey T/ 21- Shakespeare L/ 24- Pendleton L/	2	04:58	2	02:49	02:09	0-6	-6	1	1	2	0	0.0000
0- Burgin D/ 1- Wilkerson M/ 2- Harris-Smith J/ 4- Rittenberry K/ 11- Palmer A/	2	02:49	2	02:05	00:44	2-4	-2	0	0	1	1	1.0000
1- Wilkerson M/ 2- Harris-Smith J/ 4- Rittenberry K/ 11- Palmer A/ 24- Pendleton L/	2	02:05	2	01:26	00:39	0-0	0	1	1	1	0	0.0000
2- Harris-Smith J/ 4- Rittenberry K/ 11- Palmer A/ 12- Harvey T/ 24- Pendleton L/	2	01:26	2	01:19	00:07	0-0	0	0	0	0	0	0.0000
1- Wilkerson M/ 2- Harris-Smith J/ 4- Rittenberry K/ 11- Palmer A/ 24- Pendleton L/	2	01:19	3	10:00	01:19	0-2	-2	1	0	0	0	0.0000
0- Burgin D/ 2- Harris-Smith J/ 3- Wilson A/ 4- Rittenberry K/ 24- Pendleton L/	3	10:00	3	06:01	03:59	9-10	-1	1	0	3	2	1.2097
2- Harris-Smith J/ 3- Wilson A/ 4- Rittenberry K/ 12- Harvey T/ 24- Pendleton L/	3	06:01	3	06:01	00:00	0-0	0	0	0	0	0	0.0000
2- Harris-Smith J/ 4- Rittenberry K/ 11- Palmer A/ 12- Harvey T/ 24- Pendleton L/	3	06:01	3	05:09	00:52	0-5	-5	0	0	1	0	0.0000
1- Wilkerson M/ 2- Harris-Smith J/ 4- Rittenberry K/ 12- Harvey T/ 24- Pendleton L/	3	05:09	3	02:01	03:08	6-7	-1	3	1	0	1	1.2000
1- Wilkerson M/ 8- Allen N/ 11- Palmer A/ 12- Harvey T/ 24- Pendleton L/	3	02:01	3	01:47	00:14	1-0	1	0	0	0	0	1.1364
1- Wilkerson M/ 4- Rittenberry K/ 8- Allen N/ 12- Harvey T/ 24- Pendleton L/	3	01:47	3	01:47	00:00	0-0	0	0	0	0	0	0.0000
1- Wilkerson M/ 4- Rittenberry K/ 8- Allen N/ 21- Shakespeare L/ 24- Pendleton L/	3	01:47	3	00:57	00:49	3-0	3	1	0	0	0	1.5000
1- Wilkerson M/ 8- Allen N/ 12- Harvey T/ 21- Shakespeare L/ 24- Pendleton L/	3	00:57	3	00:57	00:00	0-0	0	0	0	0	0	0.0000
1- Wilkerson M/ 3- Wilson A/ 8- Allen N/ 11- Palmer A/ 24- Pendleton L/	3	00:57	4	10:00	00:57	0-0	0	1	0	0	0	0.0000



Official Basketball Rotations Summary - Final
Alabama A&M at Vanderbilt
 12/29/24 Memorial Gymnasium (Vanderbilt), Nashville
 2024-25 Women's Basketball

Game Time: 11:00 AM
Game Duration: 1:53
Attendance: 3,061

Officials: Margaret Tieman, Kristen Bell, Charles Watson

Alabama A&M

Lineup	Quarter On	Time On	Quarter Off	Time Off	Time on Court	Score	Score Diff	Reb	Stl	Tov	Ass	PPP
1- Wilkerson M/ 2- Harris-Smith J/ 3- Wilson A/ 11- Palmer A/ 24- Pendleton L/	4	10:00	4	06:47	03:13	4-8	-4	1	0	2	1	0.6667
1- Wilkerson M/ 3- Wilson A/ 4- Rittenberry K/ 8- Allen N/ 24- Pendleton L/	4	06:47	4	04:01	02:46	7-9	-2	3	1	0	2	1.1667
1- Wilkerson M/ 2- Harris-Smith J/ 4- Rittenberry K/ 11- Palmer A/ 12- Harvey T/	4	04:01	4	03:06	00:55	2-2	0	1	0	1	1	1.0000
1- Wilkerson M/ 2- Harris-Smith J/ 3- Wilson A/ 11- Palmer A/ 22- Sanders S/	4	03:06	4	00:42	02:23	1-5	-4	2	1	0	0	0.2577
1- Wilkerson M/ 2- Harris-Smith J/ 4- Rittenberry K/ 12- Harvey T/ 22- Sanders S/	4	00:42	4	00:00	00:42	4-2	2	0	1	0	0	2.0000



Official Basketball Rotations Summary - Final
Alabama A&M at Vanderbilt
 12/29/24 Memorial Gymnasium (Vanderbilt), Nashville
 2024-25 Women's Basketball

Game Time: 11:00 AM
Game Duration: 1:53
Attendance: 3,061

Officials: Margaret Tieman, Kristen Bell, Charles Watson

Vanderbilt

Lineup	Quarter On	Time On	Quarter Off	Time Off	Time on Court	Score	Score Diff	Reb	Stl	Tov	Ass	PPP
1- Blakes M/ 10- Nwaba J/ 11- Oliver J/ 12- Pierre K/ 23- Moore I/	1	10:00	1	06:38	03:22	11-9	2	4	1	0	2	1.5988
1- Blakes M/ 4- Greene M/ 11- Oliver J/ 12- Pierre K/ 23- Moore I/	1	06:38	1	05:39	00:59	0-2	-2	0	1	1	0	0.0000
1- Blakes M/ 4- Greene M/ 11- Oliver J/ 14- Mitchell A/ 23- Moore I/	1	05:39	1	04:47	00:52	3-0	3	1	0	0	1	1.5957
4- Greene M/ 5- Kapinus L/ 11- Oliver J/ 14- Mitchell A/ 23- Moore I/	1	04:47	1	02:15	02:32	7-0	7	4	1	1	2	1.4000
4- Greene M/ 5- Kapinus L/ 12- Pierre K/ 14- Mitchell A/ 23- Moore I/	1	02:15	1	02:15	00:00	0-0	0	0	0	0	0	0.0000
1- Blakes M/ 4- Greene M/ 5- Kapinus L/ 12- Pierre K/ 14- Mitchell A/	1	02:15	1	00:37	01:37	2-5	-3	0	1	1	1	0.6667
1- Blakes M/ 4- Greene M/ 10- Nwaba J/ 11- Oliver J/ 12- Pierre K/	1	00:37	2	10:00	00:37	1-0	1	1	0	0	0	1.1364
1- Blakes M/ 4- Greene M/ 11- Oliver J/ 12- Pierre K/ 23- Moore I/	2	10:00	2	08:52	01:08	0-4	-4	1	0	1	0	0.0000
1- Blakes M/ 5- Kapinus L/ 11- Oliver J/ 12- Pierre K/ 23- Moore I/	2	08:52	2	04:58	03:54	9-5	4	6	1	1	2	1.0135
4- Greene M/ 5- Kapinus L/ 11- Oliver J/ 12- Pierre K/ 23- Moore I/	2	04:58	3	10:00	04:58	12-2	10	8	3	3	3	1.0601
1- Blakes M/ 10- Nwaba J/ 11- Oliver J/ 12- Pierre K/ 23- Moore I/	3	10:00	3	05:29	04:31	12-9	3	2	2	0	5	1.7143
4- Greene M/ 5- Kapinus L/ 11- Oliver J/ 12- Pierre K/ 23- Moore I/	3	05:29	3	02:01	03:28	10-6	4	3	0	1	4	1.6667
4- Greene M/ 5- Kapinus L/ 14- Mitchell A/ 23- Moore I/ 24- Makurat A/	3	02:01	4	10:00	02:01	0-4	-4	3	0	2	0	0.0000
4- Greene M/ 10- Nwaba J/ 11- Oliver J/ 12- Pierre K/ 23- Moore I/	4	10:00	4	05:13	04:47	12-7	5	4	2	1	5	1.3514
4- Greene M/ 10- Nwaba J/ 14- Mitchell A/ 23- Moore I/ 24- Makurat A/	4	05:13	4	04:01	01:12	5-4	1	1	0	0	1	1.6667
2- Brown J/ 10- Nwaba J/ 13- Pissott J/ 14- Mitchell A/ 24- Makurat A/	4	04:01	4	01:51	02:10	7-3	4	1	1	1	3	1.5766
2- Brown J/ 10- Nwaba J/ 13- Pissott J/ 24- Makurat A/ 30- Wilson T/	4	01:51	4	00:00	01:51	2-4	-2	2	0	2	1	0.6667



Officials: Margaret Tieman, Kristen Bell, Charles Watson

Alabama A&M

Lineup	Time	Score	Score Diff	Pts/Min	Reb	Stl	Tov	Ass	PPP
0- Burgin D/ 2- Harris-Smith J/ 3- Wilson A/ 4- Rittenberry K/ 24- Pendleton L/	07:11	16-21	-5	2.2274	3	0	4	2	1.2862
1- Wilkerson M/ 2- Harris-Smith J/ 3- Wilson A/ 11- Palmer A/ 24- Pendleton L/	04:14	4-10	-6	0.9449	2	1	2	1	0.5000
1- Wilkerson M/ 2- Harris-Smith J/ 4- Rittenberry K/ 12- Harvey T/ 24- Pendleton L/	03:08	6-7	-1	1.9149	3	1	0	1	1.2000
1- Wilkerson M/ 3- Wilson A/ 4- Rittenberry K/ 8- Allen N/ 24- Pendleton L/	02:46	7-9	-2	2.5301	3	1	0	2	1.1667
1- Wilkerson M/ 2- Harris-Smith J/ 3- Wilson A/ 11- Palmer A/ 22- Sanders S/	02:23	1-5	-4	0.4193	2	1	0	0	0.2577
0- Burgin D/ 1- Wilkerson M/ 2- Harris-Smith J/ 11- Palmer A/ 24- Pendleton L/	02:19	4-4	0	1.7266	1	1	1	2	0.8000
2- Harris-Smith J/ 4- Rittenberry K/ 12- Harvey T/ 21- Shakespeare L/ 24- Pendleton L/	02:09	0-6	-6	0.0000	1	1	2	0	0.0000
0- Burgin D/ 2- Harris-Smith J/ 3- Wilson A/ 12- Harvey T/ 24- Pendleton L/	02:01	4-2	2	1.9835	5	1	2	0	0.8403
1- Wilkerson M/ 2- Harris-Smith J/ 4- Rittenberry K/ 11- Palmer A/ 24- Pendleton L/	01:58	0-2	-2	0.0000	2	1	1	0	0.0000
2- Harris-Smith J/ 4- Rittenberry K/ 11- Palmer A/ 12- Harvey T/ 24- Pendleton L/	01:57	5-5	0	2.5641	1	0	1	2	1.2500
1- Wilkerson M/ 2- Harris-Smith J/ 12- Harvey T/ 21- Shakespeare L/ 24- Pendleton L/	01:31	0-6	-6	0.0000	0	0	1	0	0.0000
1- Wilkerson M/ 2- Harris-Smith J/ 4- Rittenberry K/ 11- Palmer A/ 12- Harvey T/	01:05	2-2	0	1.8462	2	0	2	1	0.6667
0- Burgin D/ 1- Wilkerson M/ 2- Harris-Smith J/ 3- Wilson A/ 12- Harvey T/	01:01	3-2	1	2.9412	1	0	1	1	1.5000
1- Wilkerson M/ 3- Wilson A/ 8- Allen N/ 11- Palmer A/ 24- Pendleton L/	00:57	0-0	0	0.0000	1	0	0	0	0.0000
1- Wilkerson M/ 4- Rittenberry K/ 8- Allen N/ 21- Shakespeare L/ 24- Pendleton L/	00:49	3-0	3	3.6290	1	0	0	0	1.5000
0- Burgin D/ 1- Wilkerson M/ 2- Harris-Smith J/ 4- Rittenberry K/ 11- Palmer A/	00:44	2-4	-2	2.7273	0	0	1	1	1.0000
1- Wilkerson M/ 2- Harris-Smith J/ 4- Rittenberry K/ 12- Harvey T/ 22- Sanders S/	00:42	4-2	2	5.5944	0	1	0	0	2.0000
2- Harris-Smith J/ 3- Wilson A/ 4- Rittenberry K/ 22- Sanders S/ 24- Pendleton L/	00:39	0-2	-2	0.0000	0	0	0	0	0.0000
0- Burgin D/ 1- Wilkerson M/ 2- Harris-Smith J/ 3- Wilson A/ 11- Palmer A/	00:36	2-0	2	3.3333	0	0	0	0	2.0000
0- Burgin D/ 1- Wilkerson M/ 3- Wilson A/ 8- Allen N/ 24- Pendleton L/	00:29	0-1	-1	0.0000	0	0	0	0	0.0000
1- Wilkerson M/ 2- Harris-Smith J/ 4- Rittenberry K/ 11- Palmer A/ 22- Sanders S/	00:28	0-0	0	0.0000	1	0	0	0	0.0000
1- Wilkerson M/ 8- Allen N/ 11- Palmer A/ 12- Harvey T/ 24- Pendleton L/	00:14	1-0	1	4.2857	0	0	0	0	1.1364
0- Burgin D/ 8- Allen N/ 11- Palmer A/ 21- Shakespeare L/ 24- Pendleton L/	00:12	0-0	0	0.0000	1	0	0	0	0.0000
0- Burgin D/ 1- Wilkerson M/ 8- Allen N/ 11- Palmer A/ 24- Pendleton L/	00:08	0-0	0	0.0000	0	0	0	0	0.0000
0- Burgin D/ 1- Wilkerson M/ 2- Harris-Smith J/ 11- Palmer A/ 12- Harvey T/	00:07	0-2	-2	0.0000	0	0	0	0	0.0000
1- Wilkerson M/ 2- Harris-Smith J/ 4- Rittenberry K/ 21- Shakespeare L/ 22- Sanders S/	00:07	0-0	0	0.0000	0	0	0	0	0.0000
2- Harris-Smith J/ 3- Wilson A/ 11- Palmer A/ 22- Sanders S/ 24- Pendleton L/	00:01	0-0	0	0.0000	0	0	1	0	0.0000
2- Harris-Smith J/ 4- Rittenberry K/ 11- Palmer A/ 22- Sanders S/ 24- Pendleton L/	00:01	0-1	-1	0.0000	0	0	0	0	0.0000
1- Wilkerson M/ 2- Harris-Smith J/ 3- Wilson A/ 12- Harvey T/ 24- Pendleton L/	00:00	0-0	0	NaN	0	0	0	0	0.0000
2- Harris-Smith J/ 4- Rittenberry K/ 21- Shakespeare L/ 22- Sanders S/ 24- Pendleton L/	00:00	0-0	0	NaN	0	0	0	0	0.0000
0- Burgin D/ 2- Harris-Smith J/ 11- Palmer A/ 21- Shakespeare L/ 24- Pendleton L/	00:00	0-0	0	NaN	0	0	0	0	0.0000
2- Harris-Smith J/ 3- Wilson A/ 4- Rittenberry K/ 12- Harvey T/ 24- Pendleton L/	00:00	0-0	0	NaN	0	0	0	0	0.0000
1- Wilkerson M/ 4- Rittenberry K/ 8- Allen N/ 12- Harvey T/ 24- Pendleton L/	00:00	0-0	0	NaN	0	0	0	0	0.0000
1- Wilkerson M/ 8- Allen N/ 12- Harvey T/ 21- Shakespeare L/ 24- Pendleton L/	00:00	0-0	0	NaN	0	0	0	0	0.0000



Official Basketball Line Up Analysis - Final
Alabama A&M at Vanderbilt
 12/29/24 Memorial Gymnasium (Vanderbilt), Nashville
 2024-25 Women's Basketball

Game Time: 11:00 AM
Game Duration: 1:53
Attendance: 3,061

Officials: Margaret Tieman, Kristen Bell, Charles Watson

Vanderbilt

Lineup	Time	Score	Score Diff	Pts/Min	Reb	Stl	Tov	Ass	PPP
4- Greene M/ 5- Kapinus L/ 11- Oliver J/ 12- Pierre K/ 23- Moore I/	08:26	22-8	14	2.6087	11	3	4	7	1.2702
1- Blakes M/ 10- Nwaba J/ 11- Oliver J/ 12- Pierre K/ 23- Moore I/	07:53	23-18	5	2.9175	6	3	0	7	1.6571
4- Greene M/ 10- Nwaba J/ 11- Oliver J/ 12- Pierre K/ 23- Moore I/	04:47	12-7	5	2.5087	4	2	1	5	1.3514
1- Blakes M/ 5- Kapinus L/ 11- Oliver J/ 12- Pierre K/ 23- Moore I/	03:54	9-5	4	2.3077	6	1	1	2	1.0135
4- Greene M/ 5- Kapinus L/ 11- Oliver J/ 14- Mitchell A/ 23- Moore I/	02:32	7-0	7	2.7632	4	1	1	2	1.4000
2- Brown J/ 10- Nwaba J/ 13- Pissott J/ 14- Mitchell A/ 24- Makurat A/	02:10	7-3	4	3.2308	1	1	1	3	1.5766
1- Blakes M/ 4- Greene M/ 11- Oliver J/ 12- Pierre K/ 23- Moore I/	02:07	0-6	-6	0.0000	1	1	2	0	0.0000
4- Greene M/ 5- Kapinus L/ 14- Mitchell A/ 23- Moore I/ 24- Makurat A/	02:01	0-4	-4	0.0000	3	0	2	0	0.0000
2- Brown J/ 10- Nwaba J/ 13- Pissott J/ 24- Makurat A/ 30- Wilson T/	01:51	2-4	-2	1.0811	2	0	2	1	0.6667
1- Blakes M/ 4- Greene M/ 5- Kapinus L/ 12- Pierre K/ 14- Mitchell A/	01:37	2-5	-3	1.2346	0	1	1	1	0.6667
4- Greene M/ 10- Nwaba J/ 14- Mitchell A/ 23- Moore I/ 24- Makurat A/	01:12	5-4	1	4.1667	1	0	0	1	1.6667
1- Blakes M/ 4- Greene M/ 11- Oliver J/ 14- Mitchell A/ 23- Moore I/	00:52	3-0	3	3.4615	1	0	0	1	1.5957
1- Blakes M/ 4- Greene M/ 10- Nwaba J/ 11- Oliver J/ 12- Pierre K/	00:37	1-0	1	1.5873	1	0	0	0	1.1364
4- Greene M/ 5- Kapinus L/ 12- Pierre K/ 14- Mitchell A/ 23- Moore I/	00:00	0-0	0	NaN	0	0	0	0	0.0000