



Officials: Gina Cross, Karen Preato, Timothy Greene

Butler - 52

Record: 3-1

NO.	Name	Min	FG	3P	FT	Rebounds			Fouls		TP	AS	TO	ST	Blocks		+/-
			M-A	M-A	M-A	OR	DR	TOT	PF	FD					BS	BA	
24	Cristen Carter	F 17:34	2-4	0-0	1-2	2	1	3	3	2	5	0	1	0	0	0	-19
1	Karsyn Norman	G 14:31	0-4	0-2	0-0	0	0	0	0	0	0	0	3	0	0	0	-18
2	Riley Makalusky	G 20:28	0-1	0-0	2-2	1	1	2	3	2	2	0	3	2	0	0	-28
11	Kilyn McGuff	G 25:42	2-7	0-3	1-2	2	2	4	1	3	5	1	5	2	0	0	-27
21	Caroline Strande	G 32:23	8-13	6-7	0-0	0	3	3	0	2	22	1	3	2	0	1	-16
12	Lily Carmody	15:36	2-6	0-1	1-1	0	0	0	3	3	5	1	6	4	0	0	-19
3	Ari Wiggins	19:34	3-4	1-1	1-2	0	0	0	1	1	8	4	3	0	0	0	-6
32	Sydney Jaynes	13:17	0-1	0-0	0-0	1	1	2	2	0	0	1	3	0	0	0	-15
14	Jocelyn Land	14:12	0-4	0-2	2-2	1	0	1	0	1	2	2	1	1	0	0	5
10	Lily Zeinstra	17:34	1-3	1-2	0-0	0	0	0	2	1	3	2	0	1	0	1	-7
31	Lilly Stoddard	09:09	0-0	0-0	0-0	0	3	3	1	1	0	0	0	0	0	0	5
Team						2	5	7			0		2				
<b>Totals</b>			18-47	8-18	8-11	9	16	25	16	16	52	12	30	12	0	2	-29

Technical Fouls::NONE

Shooting By Period		
1 <sup>st</sup> FG%	2-8	25.0%
3PT%	1-2	50.0%
FT%	3-4	75%
2 <sup>nd</sup> FG%	5-13	38.5%
3PT%	2-6	33.3%
FT%	0-0	0%
3 <sup>rd</sup> FG%	5-13	38.5%
3PT%	2-5	40.0%
FT%	4-5	80%
4 <sup>th</sup> FG%	6-13	46.2%
3PT%	3-5	60.0%
FT%	1-2	50%
GM FG%	18-47	38.3%
3PT%	8-18	44.4%
FT%	8-11	72.7%

Dead Ball Rebounds: 3, 0

Vanderbilt - 81

Record: 4-0

NO.	Name	Min	FG	3P	FT	Rebounds			Fouls		TP	AS	TO	ST	Blocks		+/-
			M-A	M-A	M-A	OR	DR	TOT	PF	FD					BS	BA	
10	Jane Nwaba	F 25:51	3-4	3-3	0-0	2	2	4	2	1	9	1	2	1	1	0	11
12	Khamil Pierre	F 23:18	9-15	0-1	6-8	2	6	8	2	4	24	3	1	4	0	0	11
1	Mikayla Blakes	G 35:34	9-18	4-9	7-8	1	1	2	3	6	29	2	3	3	0	0	22
4	Madison Greene	G 20:20	0-2	0-2	0-0	0	2	2	3	1	0	1	5	3	0	0	23
11	Jordyn Oliver	G 32:48	1-3	0-0	0-0	1	2	3	2	1	2	6	1	2	0	0	19
13	Justine Pissott	14:22	1-4	0-2	2-2	2	4	6	2	2	4	0	1	0	0	0	15
14	Aiyana Mitchell	14:11	3-5	0-0	0-1	4	1	5	0	1	6	1	3	0	0	0	19
5	Leilani Kapinus	19:58	2-3	0-0	0-0	0	0	0	1	0	4	2	2	3	1	0	21
24	Aga Makurat	07:12	1-2	1-1	0-0	0	0	0	1	0	3	1	1	1	0	0	10
2	Jada Brown	03:55	0-1	0-0	0-0	1	0	1	0	0	0	1	0	0	0	0	-5
30	Trinity Wilson	02:31	0-0	0-0	0-0	0	0	0	0	0	0	0	0	0	0	0	-1
Team						0	2	2			0		2				
<b>Totals</b>			29-57	8-18	15-19	13	20	33	16	16	81	18	21	17	2	0	29

Technical Fouls::NONE

Shooting By Period		
1 <sup>st</sup> FG%	6-12	50.0%
3PT%	1-3	33.3%
FT%	4-4	100%
2 <sup>nd</sup> FG%	8-17	47.1%
3PT%	2-5	40.0%
FT%	2-3	66.7%
3 <sup>rd</sup> FG%	7-11	63.6%
3PT%	2-4	50.0%
FT%	6-8	75%
4 <sup>th</sup> FG%	8-17	47.1%
3PT%	3-6	50.0%
FT%	3-4	75%
GM FG%	29-57	50.9%
3PT%	8-18	44.4%
FT%	15-19	78.9%

Dead Ball Rebounds: 3, 0

	BUTLER	VANDY
Biggest lead	0 (1 <sup>st</sup> 10:00)	35 (4 <sup>th</sup> 3:55)
Best Scoring Run	7 (3 <sup>rd</sup> 3:40)	12 (3 <sup>rd</sup> 8:25)
Lead Changes	0	
Times Tied	1	
Time with Lead	00:00	37:08

	BUTLER	VANDY
Points from		
Turnovers	13	41
Paint	20	30
Second Chance	7	10
Fast Breaks	7	14
Bench	18	17

	Period by Period Scoring				
	1st	2nd	3rd	4th	TOT
BUTLER	8	12	16	16	52
VANDY	17	20	22	22	81



**Butler at Vanderbilt**

11/17/24 Memorial Gymnasium, Nashville  
2024-25 Women's Basketball

**Game Time:** 2:00 PM  
**Game Duration:** 1:45  
**Attendance:** 2,615

**Officials:** Gina Cross, Karen Preato, Timothy Greene

**Period 1**

**Quarter Starters:**

<b>VANDY</b>	1 Blakes M	4 Greene M	10 Nwaba J	11 Oliver J	12 Pierre K
<b>BUTLER</b>	1 Norman K	2 Makalusky R	11 McGuff K	21 Strande C	24 Carter C

Game Time	VANDY	Score	Diff	BUTLER
10:00	12 PIERRE K jumpball lost			24 CARTER C jumpball won
09:34	1 BLAKES M steal (1)			2 MAKALUSKY R turnover lost ball (1)
09:19	12 PIERRE K 2pt FG from turnover outside the paint, jump shot missed			
09:14				21 STRANDE C defensive rebound (1)
09:05	12 PIERRE K steal (1)			21 STRANDE C turnover bad pass (1)
09:00	12 PIERRE K 2pt FG fast break from turnover in the paint, driving layup made (2)	<b>2-0</b>	<b>2</b>	
08:25				24 CARTER C 2pt FG in the paint, hook shot missed
08:22	12 PIERRE K defensive rebound (1)			
08:10	1 BLAKES M 2pt FG in the paint, turnaround jump shot missed			
08:07				defensive rebound (2)
07:42	10 NWABA J foul shooting (1 - 1)			2 MAKALUSKY R foul drawn (1)
07:42		<b>2-1</b>	<b>1</b>	2 MAKALUSKY R free throw 1 - 2 made (1)
07:42		<b>2-2</b>	<b>0</b>	2 MAKALUSKY R free throw 2 - 2 made (2)
07:22	10 NWABA J 2pt FG in the paint, pull up jump shot missed			
07:18				24 CARTER C defensive rebound (1)
06:59				21 STRANDE C 2pt FG in the paint, jump shot blocked
06:59	10 NWABA J block (1)			
06:53	12 PIERRE K defensive rebound (2)			
06:52	12 PIERRE K turnover bad pass (1)			2 MAKALUSKY R steal (1)
06:47	1 BLAKES M foul personal (1 - 2)			21 STRANDE C foul drawn (1)
06:47	10 NWABA J substitution out			
06:47	12 PIERRE K substitution out			
06:47	13 PISSOTT J substitution in			
06:47	14 MITCHELL A substitution in			
06:47				21 STRANDE C substitution out
06:47				12 CARMODY L substitution in
06:46				24 CARTER C 2pt FG from turnover in the paint, jump shot missed
06:41	4 GREENE M defensive rebound (1)			
06:11	turnover shot clock (2)			
06:01				1 NORMAN K turnover travel (1)
05:50	1 BLAKES M 3pt FG from turnover, jump shot made (3)	<b>5-2</b>	<b>3</b>	
05:50	11 OLIVER J assist (1)			
05:31				1 NORMAN K 3pt FG , jump shot missed
05:27				11 MCGUFF K offensive rebound (1)
05:26	13 PISSOTT J foul shooting (1 - 3)			11 MCGUFF K foul drawn (1)
05:26				11 MCGUFF K free throw 1 - 2 missed
05:26				offensive dead ball rebound (1)
05:26		<b>5-3</b>	<b>2</b>	11 MCGUFF K free throw 2 - 2 made (1)
05:18	4 GREENE M 3pt FG , jump shot missed			
05:14	11 OLIVER J offensive rebound (1)			



**Butler at Vanderbilt**

11/17/24 Memorial Gymnasium, Nashville  
2024-25 Women's Basketball

**Game Time:** 2:00 PM  
**Game Duration:** 1:45  
**Attendance:** 2,615

**Officials:** Glna Cross, Karen Preato, Timothy Greene

Game Time	VANDY	Score	Diff	BUTLER
04:59	13 PISSOTT J 2pt FG second chance outside the paint, floating jump shot made (2)	7-3	4	
04:43				12 CARMODY L turnover lost ball (1)
04:43	Timeout media			
04:43				1 NORMAN K substitution out
04:43				24 CARTER C substitution out
04:43				3 WIGGINS A substitution in
04:43				32 JAYNES S substitution in
04:24	1 BLAKES M 2pt FG from turnover in the paint, pull up jump shot missed			
04:21				32 JAYNES S defensive rebound (1)
03:56				2 MAKALUSKY R 2pt FG in the paint, driving layup missed
03:52				32 JAYNES S offensive rebound (2)
03:49				turnover shot clock (5)
03:25	14 MITCHELL A 2pt FG from turnover in the paint, turnaround jump shot made (2)	9-3	6	
03:25	11 OLIVER J assist (2)			
03:04	4 GREENE M steal (1)			32 JAYNES S turnover bad pass (1)
02:55	4 GREENE M 3pt FG from turnover, pull up jump shot missed			
02:52				defensive rebound (7)
02:52				2 MAKALUSKY R substitution out
02:52				14 LAND J substitution in
02:28				11 MCGUFF K turnover bad pass (1)
02:28				11 MCGUFF K substitution out
02:28				21 STRANDE C substitution in
02:13	1 BLAKES M foul drawn (1)			3 WIGGINS A foul shooting (1 - 1)
02:13	1 BLAKES M free throw 1 - 2 made (4)	10-3	7	
02:13	1 BLAKES M free throw 2 - 2 made (5)	11-3	8	
02:02		11-5	6	12 CARMODY L 2pt FG in the paint, driving layup made (2)
01:45	1 BLAKES M 2pt FG outside the paint, pull up jump shot made (7)	13-5	8	
01:22				12 CARMODY L 2pt FG in the paint, driving layup missed
01:18	13 PISSOTT J defensive rebound (1)			
01:14	13 PISSOTT J turnover bad pass (1)			21 STRANDE C steal (1)
01:10				21 STRANDE C turnover bad pass (2)
01:10	13 PISSOTT J substitution out			
01:10	14 MITCHELL A substitution out			
01:10	10 NWABA J substitution in			
01:10	12 PIERRE K substitution in			
01:10				12 CARMODY L substitution out
01:10				11 MCGUFF K substitution in
00:54	12 PIERRE K foul drawn (1)			32 JAYNES S foul shooting (1 - 2)
00:54	12 PIERRE K free throw 1 - 2 made (3)	14-5	9	
00:54	12 PIERRE K free throw 2 - 2 made (4)	15-5	10	
00:48	11 OLIVER J steal (1)			3 WIGGINS A turnover bad pass (1)
00:38	12 PIERRE K 2pt FG from turnover in the paint, layup made (6)	17-5	12	
00:38	4 GREENE M assist (1)			
00:16		17-8	9	21 STRANDE C 3pt FG , jump shot made (3)
00:16				14 LAND J assist (1)
00:03	4 GREENE M turnover bad pass (1)			11 MCGUFF K steal (1)



Official Basketball Play by Play - 1st Period

### Butler at Vanderbilt

11/17/24 Memorial Gymnasium, Nashville  
2024-25 Women's Basketball

Game Time: 2:00 PM

Game Duration: 1:45

Attendance: 2,615

Officials: Gina Cross, Karen Preato, Timothy Greene

Game Time	VANDY	Score	Diff	BUTLER
END OF PERIOD				
VANDY 17-8 BUTLER				



**Butler at Vanderbilt**

11/17/24 Memorial Gymnasium, Nashville  
2024-25 Women's Basketball

Game Time: 2:00 PM  
Game Duration: 1:45  
Attendance: 2,615

Officials: Gina Cross, Karen Preato, Timothy Greene

**Butler - 8**

NO.	Name	Min	FG			Rebounds			Fouls		TP	AS	TO	ST	Blocks		+/-
			M-A	M-A	M-A	OR	DR	TOT	PF	FD					BS	BA	
24	Cristen Carter	F 05:17	0-2	0-0	0-0	0	1	1	0	0	0	0	0	0	0	0	-4
1	Karsyn Norman	G 05:17	0-1	0-1	0-0	0	0	0	0	0	0	1	0	0	0	-4	
2	Riley Makalusky	G 07:08	0-1	0-0	2-2	0	0	0	0	1	2	0	1	1	0	-6	
11	Kilyn McGuff	G 08:42	0-0	0-0	1-2	1	0	1	0	1	1	0	1	1	0	-7	
21	Caroline Strande	G 05:41	1-2	1-1	0-0	0	1	1	0	1	3	0	2	1	0	-3	
12	Lily Carmody	05:37	1-2	0-0	0-0	0	0	0	0	0	2	0	1	0	0	-8	
3	Ari Wiggins	04:43	0-0	0-0	0-0	0	0	0	1	0	0	0	1	0	0	-5	
32	Sydney Jaynes	04:43	0-0	0-0	0-0	1	1	2	1	0	0	0	1	0	0	-5	
14	Jocelyn Land	02:52	0-0	0-0	0-0	0	0	0	0	0	0	1	0	0	0	-3	
Team						0	2	2		0		1					
<b>Totals</b>			2-8	1-2	3-4	2	5	7	2	3	8	1	9	3	0	1	-9

Shooting By Period		
1st FG%	2-8	25.0%
3PT%	1-2	50.0%
FT%	3-4	75%
GM FG%	2-8	25.0%
3PT%	1-2	50.0%
FT%	3-4	75.0%

Dead Ball Rebounds: 1, 0

Technical Fouls::NONE

**Vanderbilt - 17**

NO.	Name	Min	FG			Rebounds			Fouls		TP	AS	TO	ST	Blocks		+/-
			M-A	M-A	M-A	OR	DR	TOT	PF	FD					BS	BA	
10	Jane Nwaba	F 04:23	0-1	0-0	0-0	0	0	0	1	0	0	0	0	0	1	0	1
12	Khamil Pierre	F 04:23	2-3	0-0	2-2	0	2	2	0	1	6	0	1	1	0	0	1
1	Mikayla Blakes	G 10:00	2-4	1-1	2-2	0	0	0	1	1	7	0	0	1	0	0	9
4	Madison Greene	G 10:00	0-2	0-2	0-0	0	1	1	0	0	0	1	1	1	0	0	9
11	Jordyn Oliver	G 10:00	0-0	0-0	0-0	1	0	1	0	0	0	2	0	1	0	0	9
13	Justine Pissott	05:37	1-1	0-0	0-0	0	1	1	1	0	2	0	1	0	0	8	
14	Aiyana Mitchell	05:37	1-1	0-0	0-0	0	0	0	0	0	2	0	0	0	0	8	
Team						0	0	0		0		1					
<b>Totals</b>			6-12	1-3	4-4	1	4	5	3	2	17	3	4	4	1	0	9

Shooting By Period		
1st FG%	6-12	50.0%
3PT%	1-3	33.3%
FT%	4-4	100%
GM FG%	6-12	50.0%
3PT%	1-3	33.3%
FT%	4-4	100.0%

Dead Ball Rebounds: 0, 0

Technical Fouls::NONE

	BUTLER	VANDY
Biggest lead	0 (1 <sup>st</sup> 10:00)	12 (1 <sup>st</sup> 0:38)
Best Scoring Run	3(1 <sup>st</sup> 0:16)	6(1 <sup>st</sup> 2:13)
Lead Changes	0	
Times Tied	1	
Time with Lead	00:00	07:08

Points from	BUTLER	VANDY
Turnovers	0	13
Paint	2	6
Second Chance	1	2
Fast Breaks	0	2
Bench	2	4

	Period by Period Scoring				
	1st	2nd	3rd	4th	TOT
BUTLER	8	12	16	16	52
VANDY	17	20	22	22	81



**Butler at Vanderbilt**

11/17/24 Memorial Gymnasium, Nashville  
2024-25 Women's Basketball

**Game Time:** 2:00 PM  
**Game Duration:** 1:45  
**Attendance:** 2,615

**Officials:** Gina Cross, Karen Preato, Timothy Greene

**Period 2**

**Quarter Starters:**

<b>VANDY</b>	1 Blakes M	5 Kapinus L	10 Nwaba J	12 Pierre K	24 Makurat A
<b>BUTLER</b>	1 Norman K	11 McGuff K	14 Land J	21 Strande C	32 Jaynes S

Game Time	VANDY	Score	Diff	BUTLER
10:00	4 GREENE M substitution out			
10:00	11 OLIVER J substitution out			
10:00	5 KAPINUS L substitution in			
10:00	24 MAKURAT A substitution in			
10:00				3 WIGGINS A substitution out
10:00				1 NORMAN K substitution in
09:52	1 BLAKES M 3pt FG , jump shot made (10)	<b>20-8</b>	<b>12</b>	
09:52	24 MAKURAT A assist (1)			
09:27		<b>20-11</b>	<b>9</b>	21 STRANDE C 3pt FG , jump shot made (6)
09:27				11 MCGUFF K assist (1)
08:52	5 KAPINUS L 2pt FG outside the paint, pull up jump shot missed			
08:48	10 NWABA J offensive rebound (1)			
08:45	12 PIERRE K 3pt FG second chance, jump shot missed			
08:40				21 STRANDE C defensive rebound (2)
08:15		<b>20-14</b>	<b>6</b>	21 STRANDE C 3pt FG , jump shot made (9)
08:15				32 JAYNES S assist (1)
08:11	Timeout 30 Sec			
08:11	Timeout media			
08:11				14 LAND J substitution out
08:11				2 MAKALUSKY R substitution in
07:50	10 NWABA J 3pt FG , jump shot made (3)	<b>23-14</b>	<b>9</b>	
07:50	12 PIERRE K assist (1)			
07:31	5 KAPINUS L steal (1)			32 JAYNES S turnover bad pass (2)
07:25	1 BLAKES M 2pt FG fast break from turnover in the paint, driving layup missed			
07:21	12 PIERRE K offensive rebound (3)			
07:20	12 PIERRE K 2pt FG from turnover second chance in the paint, layup made (8)	<b>25-14</b>	<b>11</b>	
07:11	12 PIERRE K steal (2)			11 MCGUFF K turnover bad pass (2)
07:08	12 PIERRE K 2pt FG fast break from turnover outside the paint, pull up jump shot made (10)	<b>27-14</b>	<b>13</b>	
07:05				Timeout 30 Sec
07:05	24 MAKURAT A substitution out			
07:05	11 OLIVER J substitution in			
07:05				32 JAYNES S substitution out
07:05				24 CARTER C substitution in
07:05				1 NORMAN K substitution out
07:05				12 CARMODY L substitution in
06:55				21 STRANDE C 2pt FG in the paint, driving layup missed
06:52				24 CARTER C offensive rebound (2)
06:45		<b>27-16</b>	<b>11</b>	24 CARTER C 2pt FG second chance in the paint, layup made (2)
06:45				12 CARMODY L assist (1)
06:18	12 PIERRE K 2pt FG outside the paint, jump shot made (12)	<b>29-16</b>	<b>13</b>	



**Butler at Vanderbilt**

11/17/24 Memorial Gymnasium, Nashville  
2024-25 Women's Basketball

**Game Time:** 2:00 PM  
**Game Duration:** 1:45  
**Attendance:** 2,615

**Officials:** Glna Cross, Karen Preato, Timothy Greene

Game Time	VANDY	Score	Diff	BUTLER
06:18	10 NWABA J assist (1)			
06:02				12 CARMODY L turnover travel (2)
06:02	1 BLAKES M substitution out			
06:02	4 GREENE M substitution in			
06:02				12 CARMODY L substitution out
06:02				1 NORMAN K substitution in
05:50	4 GREENE M turnover travel (2)			
05:39				21 STRANDE C turnover travel (3)
05:24	5 KAPINUS L 2pt FG from turnover in the paint, driving layup made (2)	<b>31-16</b>	<b>15</b>	
05:13	12 PIERRE K steal (3)			11 MCGUFF K turnover bad pass (3)
05:07	5 KAPINUS L turnover bad pass (1)			2 MAKALUSKY R steal (2)
04:59		<b>31-18</b>	<b>13</b>	11 MCGUFF K 2pt FG fast break from turnover in the paint, driving layup made (3)
04:48	4 GREENE M turnover bad pass (3)			21 STRANDE C steal (2)
04:48	5 KAPINUS L substitution out			
04:48	10 NWABA J substitution out			
04:48	1 BLAKES M substitution in			
04:48	13 PISSOTT J substitution in			
04:39	13 PISSOTT J foul personal (2 - 1)			2 MAKALUSKY R foul drawn (2)
04:24				11 MCGUFF K 3pt FG from turnover, jump shot missed
04:21				offensive rebound (10)
04:18				1 NORMAN K 3pt FG from turnover second chance, jump shot missed
04:15	1 BLAKES M defensive rebound (1)			
04:09	1 BLAKES M turnover bad pass (1)			11 MCGUFF K steal (2)
04:09	12 PIERRE K foul personal (1 - 2)			11 MCGUFF K foul drawn (2)
03:47				1 NORMAN K 2pt FG from turnover outside the paint, pull up jump shot missed
03:43				24 CARTER C offensive rebound (3)
03:42		<b>31-20</b>	<b>11</b>	24 CARTER C 2pt FG from turnover second chance in the paint, layup made (4)
03:22	12 PIERRE K 2pt FG in the paint, pull up jump shot missed			
03:18				defensive rebound (12)
03:18	13 PISSOTT J substitution out			
03:18	10 NWABA J substitution in			
03:18	12 PIERRE K substitution out			
03:18	14 MITCHELL A substitution in			
02:58	10 NWABA J foul personal (2 - 3)			24 CARTER C foul drawn (1)
02:58	10 NWABA J substitution out			
02:58	5 KAPINUS L substitution in			
02:58	4 GREENE M steal (2)			1 NORMAN K turnover bad pass (2)
02:53	1 BLAKES M foul drawn (2)			11 MCGUFF K foul shooting (1 - 1)
02:53	1 BLAKES M free throw fast break 1 - 2 made (11)	<b>32-20</b>	<b>12</b>	
02:53	1 BLAKES M free throw fast break 2 - 2 made (12)	<b>33-20</b>	<b>13</b>	
02:47				21 STRANDE C 3pt FG , jump shot missed
02:42				2 MAKALUSKY R offensive rebound (1)
02:41	1 BLAKES M steal (2)			2 MAKALUSKY R turnover lost ball (2)
02:33	14 MITCHELL A 2pt FG from turnover in the paint, turnaround jump shot made (4)	<b>35-20</b>	<b>15</b>	
02:33	11 OLIVER J assist (3)			



**Butler at Vanderbilt**

11/17/24 Memorial Gymnasium, Nashville  
2024-25 Women's Basketball

**Game Time:** 2:00 PM  
**Game Duration:** 1:45  
**Attendance:** 2,615

**Officials:** Gina Cross, Karen Preato, Timothy Greene

Game Time	VANDY	Score	Diff	BUTLER
02:33	14 MITCHELL A foul drawn (1)			24 CARTER C foul shooting (1 - 2)
02:33				1 NORMAN K substitution out
02:33				21 STRANDE C substitution out
02:33				24 CARTER C substitution out
02:33				10 ZEINSTRA L substitution in
02:33				12 CARMODY L substitution in
02:33				32 JAYNES S substitution in
02:33	14 MITCHELL A free throw 1 - 1 missed			
02:32				11 MCGUFF K defensive rebound (2)
02:17				12 CARMODY L 2pt FG outside the paint, jump shot missed
02:13	11 OLIVER J defensive rebound (2)			
02:12	1 BLAKES M 3pt FG , jump shot missed			
02:09	14 MITCHELL A offensive rebound (1)			
02:08	14 MITCHELL A 2pt FG second chance in the paint, jump shot missed			
02:06	1 BLAKES M offensive rebound (2)			
02:02	5 KAPINUS L turnover bad pass (2)			12 CARMODY L steal (1)
01:53	1 BLAKES M steal (3)			32 JAYNES S turnover bad pass (3)
01:49	1 BLAKES M 2pt FG fast break from turnover in the paint, driving layup made (14)	<b>37-20</b>	<b>17</b>	
01:18				11 MCGUFF K 3pt FG , jump shot missed
01:15	4 GREENE M defensive rebound (2)			
01:09	1 BLAKES M 3pt FG , jump shot missed			
01:06	14 MITCHELL A offensive rebound (2)			
01:06	11 OLIVER J foul drawn (1)			2 MAKALUSKY R foul personal (1 - 3)
01:06				2 MAKALUSKY R substitution out
01:06				12 CARMODY L substitution out
01:06				3 WIGGINS A substitution in
01:06				21 STRANDE C substitution in
00:50	4 GREENE M foul offensive (1 - 4)			11 MCGUFF K foul drawn (3)
00:50	4 GREENE M turnover offensive (4)			
00:38				11 MCGUFF K 2pt FG from turnover in the paint, floating jump shot missed
00:35	14 MITCHELL A defensive rebound (3)			
00:08	11 OLIVER J 2pt FG outside the paint, jump shot missed			
00:05	14 MITCHELL A offensive rebound (4)			
00:03	14 MITCHELL A 2pt FG second chance outside the paint, turnaround jump shot missed			
00:01	offensive dead ball rebound (1)			
00:01	turnover shot clock (11)			
<b>END OF PERIOD</b>				
<b>VANDY 37-20 BUTLER</b>				





**Butler at Vanderbilt**

11/17/24 Memorial Gymnasium, Nashville  
2024-25 Women's Basketball

Game Time: 2:00 PM  
Game Duration: 1:45  
Attendance: 2,615

Officials: Gina Cross, Karen Preato, Timothy Greene

**Butler - 12**

NO.	Name	F	Min	FG			Rebounds			Fouls		TP	AS	TO	ST	Blocks		+/-
				M-A	M-A	M-A	OR	DR	TOT	PF	FD					BS	BA	
24	Cristen Carter	F	04:32	2-2	0-0	0-0	2	0	2	1	1	4	0	0	0	0	0	-2
1	Karsyn Norman	G	06:24	0-2	0-1	0-0	0	0	0	0	0	0	0	1	0	0	0	-6
2	Riley Makalusky	G	07:05	0-0	0-0	0-0	1	0	1	1	1	0	0	1	1	0	0	-11
11	Kilyn McGuff	G	10:00	1-4	0-2	0-0	0	1	1	1	2	2	1	2	1	0	0	-8
21	Caroline Strande	G	08:33	2-4	2-3	0-0	0	1	1	0	0	6	0	1	1	0	0	-6
14	Jocelyn Land		01:49	0-0	0-0	0-0	0	0	0	0	0	0	0	0	0	0	0	3
12	Lily Carmody		02:30	0-1	0-0	0-0	0	0	0	0	0	0	1	1	1	0	0	-2
10	Lily Zeinstra		02:33	0-0	0-0	0-0	0	0	0	0	0	0	0	0	0	0	0	-2
32	Sydney Jaynes		05:28	0-0	0-0	0-0	0	0	0	0	0	0	1	2	0	0	0	-6
3	Ari Wiggins		01:06	0-0	0-0	0-0	0	0	0	0	0	0	0	0	0	0	0	0
Team							1	1	2			0		0				
<b>Totals</b>				5-13	2-6	0-0	4	3	7	3	4	12	3	8	4	0	0	-8

Shooting By Period		
2 <sup>nd</sup> FG%	5-13	38.5%
3PT%	2-6	33.3%
FT%	0-0	0%
GM FG%	5-13	38.5%
3PT%	2-6	33.3%
FT%	0-0	0.0%

Dead Ball Rebounds: 0, 0

Technical Fouls::NONE

**Vanderbilt - 20**

NO.	Name	F	Min	FG			Rebounds			Fouls		TP	AS	TO	ST	Blocks		+/-
				M-A	M-A	M-A	OR	DR	TOT	PF	FD					BS	BA	
10	Jane Nwaba	F	05:32	1-1	1-1	0-0	1	0	1	1	0	3	1	0	0	0	0	4
12	Khamil Pierre	F	06:42	3-5	0-1	0-0	1	0	1	1	0	6	1	0	2	0	0	2
1	Mikayla Blakes	G	08:46	2-5	1-3	2-2	1	1	2	0	1	7	0	1	2	0	0	8
4	Madison Greene	G	06:02	0-0	0-0	0-0	0	1	1	1	0	0	0	3	1	0	0	4
11	Jordyn Oliver	G	07:05	0-1	0-0	0-0	0	1	1	0	1	0	1	0	0	0	0	4
5	Leilani Kapinus		08:10	1-2	0-0	0-0	0	0	0	0	0	2	0	2	1	0	0	10
24	Aga Makurat		02:55	0-0	0-0	0-0	0	0	0	0	0	0	1	0	0	0	0	4
13	Justine Pissott		01:30	0-0	0-0	0-0	0	0	0	1	0	0	0	0	0	0	0	-2
14	Aiyana Mitchell		03:18	1-3	0-0	0-1	3	1	4	0	1	2	0	0	0	0	0	6
Team							0	0	0			0		1				
<b>Totals</b>				8-17	2-5	2-3	6	4	10	4	3	20	4	7	6	0	0	8

Shooting By Period		
2 <sup>nd</sup> FG%	8-17	47.1%
3PT%	2-5	40.0%
FT%	2-3	66.7%
GM FG%	8-17	47.1%
3PT%	2-5	40.0%
FT%	2-3	66.7%

Dead Ball Rebounds: 1, 0

Technical Fouls::NONE

	BUTLER	VANDY
Biggest lead	0 (1 <sup>st</sup> 10:00)	17 (2 <sup>nd</sup> 1:49)
Best Scoring Run	6(2 <sup>nd</sup> 8:15)	7(2 <sup>nd</sup> 7:08)
Lead Changes	0	
Times Tied	0	
Time with Lead	00:00	09:52

Points from	BUTLER	VANDY
Turnovers	4	12
Paint	6	8
Second Chance	4	2
Fast Breaks	2	6
Bench	0	4

Period by Period Scoring					
	1st	2nd	3rd	4th	TOT
BUTLER	8	12	16	16	52
VANDY	17	20	22	22	81



**Butler at Vanderbilt**

11/17/24 Memorial Gymnasium, Nashville  
2024-25 Women's Basketball

Game Time: 2:00 PM  
Game Duration: 1:45  
Attendance: 2,615

Officials: Gina Cross, Karen Preato, Timothy Greene

**Butler - 20**

NO.	Name	F	Min	FG			Rebounds			Fouls		TP	AS	TO	ST	Blocks		+/-
				M-A	M-A	M-A	OR	DR	TOT	PF	FD					BS	BA	
24	Cristen Carter	F	09:49	2-4	0-0	0-0	2	1	3	1	1	4	0	0	0	0	0	-6
1	Karsyn Norman	G	11:41	0-3	0-2	0-0	0	0	0	0	0	0	0	2	0	0	0	-10
2	Riley Makalusky	G	14:13	0-1	0-0	2-2	1	0	1	1	2	2	0	2	2	0	0	-17
11	Kilyn McGuff	G	18:42	1-4	0-2	1-2	1	1	2	1	3	3	1	3	2	0	0	-15
21	Caroline Strande	G	14:14	3-6	3-4	0-0	0	2	2	0	1	9	0	3	2	0	1	-9
12	Lily Carmody		08:07	1-3	0-0	0-0	0	0	0	0	0	2	1	2	1	0	0	-10
3	Ari Wiggins		05:49	0-0	0-0	0-0	0	0	0	1	0	0	0	1	0	0	0	-5
32	Sydney Jaynes		10:11	0-0	0-0	0-0	1	1	2	1	0	0	1	3	0	0	0	-11
14	Jocelyn Land		04:41	0-0	0-0	0-0	0	0	0	0	0	0	1	0	0	0	0	0
10	Lily Zeinstra		02:33	0-0	0-0	0-0	0	0	0	0	0	0	0	0	0	0	0	-2
Team							1	3	4			0		1				
<b>Totals</b>				7-21	3-8	3-4	6	8	14	5	7	20	4	17	7	0	1	-17

Shooting By Period		
1 <sup>st</sup> FG%	2-8	25.0%
3PT%	1-2	50.0%
FT%	3-4	75%
2 <sup>nd</sup> FG%	5-13	38.5%
3PT%	2-6	33.3%
FT%	0-0	0%
GM FG%	7-21	33.3%
3PT%	3-8	37.5%
FT%	3-4	75.0%

Dead Ball Rebounds: 1, 0

Technical Fouls::NONE

**Vanderbilt - 37**

NO.	Name	F	Min	FG			Rebounds			Fouls		TP	AS	TO	ST	Blocks		+/-
				M-A	M-A	M-A	OR	DR	TOT	PF	FD					BS	BA	
10	Jane Nwaba	F	09:55	1-2	1-1	0-0	1	0	1	2	0	3	1	0	0	1	0	5
12	Khamil Pierre	F	11:05	5-8	0-1	2-2	1	2	3	1	1	12	1	1	3	0	0	3
1	Mikayla Blakes	G	18:46	4-9	2-4	4-4	1	1	2	1	2	14	0	1	3	0	0	17
4	Madison Greene	G	16:02	0-2	0-2	0-0	0	2	2	1	0	0	1	4	2	0	0	13
11	Jordyn Oliver	G	17:05	0-1	0-0	0-0	1	1	2	0	1	0	3	0	1	0	0	13
13	Justine Pissott		07:07	1-1	0-0	0-0	0	1	1	2	0	2	0	1	0	0	0	6
14	Aiyana Mitchell		08:55	2-4	0-0	0-1	3	1	4	0	1	4	0	0	0	0	0	14
5	Leilani Kapinus		08:10	1-2	0-0	0-0	0	0	0	0	0	2	0	2	1	0	0	10
24	Aga Makurat		02:55	0-0	0-0	0-0	0	0	0	0	0	0	1	0	0	0	0	4
Team							0	0	0			0		2				
<b>Totals</b>				14-29	3-8	6-7	7	8	15	7	5	37	7	11	10	1	0	17

Shooting By Period		
1 <sup>st</sup> FG%	6-12	50.0%
3PT%	1-3	33.3%
FT%	4-4	100%
2 <sup>nd</sup> FG%	8-17	47.1%
3PT%	2-5	40.0%
FT%	2-3	66.7%
GM FG%	14-29	48.3%
3PT%	3-8	37.5%
FT%	6-7	85.7%

Dead Ball Rebounds: 1, 0

Technical Fouls::NONE

	BUTLER	VANDY
Biggest lead	0 (1 <sup>st</sup> 10:00)	17 (2 <sup>nd</sup> 1:49)
Best Scoring Run	6(2 <sup>nd</sup> 8:15)	7(2 <sup>nd</sup> 7:08)
Lead Changes	0	
Times Tied	1	
Time with Lead	00:00	17:08

Points from	BUTLER	VANDY
Turnovers	4	25
Paint	8	14
Second Chance	5	4
Fast Breaks	2	8
Bench	2	8

	Period by Period Scoring				
	1st	2nd	3rd	4th	TOT
BUTLER	8	12	16	16	52
VANDY	17	20	22	22	81



**Butler at Vanderbilt**

11/17/24 Memorial Gymnasium, Nashville  
2024-25 Women's Basketball

**Game Time:** 2:00 PM  
**Game Duration:** 1:45  
**Attendance:** 2,615

**Officials:** Glna Cross, Karen Preato, Timothy Greene

**Period 3**

**Quarter Starters:**

<b>VANDY</b>	1 Blakes M	4 Greene M	10 Nwaba J	11 Oliver J	12 Pierre K
<b>BUTLER</b>	1 Norman K	2 Makalusky R	11 McGuff K	21 Strande C	24 Carter C

Game Time	VANDY	Score	Diff	BUTLER
10:00	5 KAPINUS L substitution out			
10:00	14 MITCHELL A substitution out			
10:00	10 NWABA J substitution in			
10:00	12 PIERRE K substitution in			
10:00				3 WIGGINS A substitution out
10:00				10 ZEINSTRAL L substitution out
10:00				32 JAYNES S substitution out
10:00				1 NORMAN K substitution in
10:00				2 MAKALUSKY R substitution in
10:00				24 CARTER C substitution in
09:49	4 GREENE M steal (3)			11 MCGUFF K turnover lost ball (4)
09:30	12 PIERRE K foul drawn (2)			24 CARTER C foul shooting (2 - 1)
09:30	12 PIERRE K free throw 1 - 2 missed			
09:30	offensive dead ball rebound (2)			
09:30	12 PIERRE K free throw 2 - 2 made (13)	<b>38-20</b>	<b>18</b>	
09:19	4 GREENE M foul personal (2 - 1)			21 STRANDE C foul drawn (2)
09:08	12 PIERRE K steal (4)			1 NORMAN K turnover bad pass (3)
09:03	1 BLAKES M 2pt FG from turnover in the paint, layup made (16)	<b>40-20</b>	<b>20</b>	
09:03	12 PIERRE K assist (2)			
09:01				Timeout 30 Sec
09:01				Timeout media
09:01				1 NORMAN K substitution out
09:01				12 CARMODY L substitution in
09:01				turnover sec 5 (20)
08:53	4 GREENE M foul drawn (1)			12 CARMODY L foul personal (1 - 2)
08:41	4 GREENE M turnover bad pass (5)			12 CARMODY L steal (2)
08:41	4 GREENE M foul personal (3 - 2)			12 CARMODY L foul drawn (1)
08:41	4 GREENE M substitution out			
08:41	5 KAPINUS L substitution in			
08:34				12 CARMODY L turnover travel (3)
08:25	1 BLAKES M 3pt FG from turnover, jump shot made (19)	<b>43-20</b>	<b>23</b>	
08:25	11 OLIVER J assist (4)			
08:13				12 CARMODY L 3pt FG , pull up jump shot missed
08:09	10 NWABA J defensive rebound (2)			
08:02	12 PIERRE K 2pt FG outside the paint, jump shot missed			
07:59				2 MAKALUSKY R defensive rebound (2)
07:41	1 BLAKES M foul personal (2 - 3)			12 CARMODY L foul drawn (2)
07:30	jump ball situation			
07:30	5 KAPINUS L steal (2)			12 CARMODY L turnover lost ball (4)
07:15	1 BLAKES M 3pt FG from turnover, jump shot missed			
07:14	10 NWABA J offensive rebound (3)			
07:14	10 NWABA J foul drawn (1)			2 MAKALUSKY R foul personal (2 - 3)
07:14				11 MCGUFF K substitution out



**Butler at Vanderbilt**

11/17/24 Memorial Gymnasium, Nashville  
2024-25 Women's Basketball

**Game Time:** 2:00 PM  
**Game Duration:** 1:45  
**Attendance:** 2,615

**Officials:** Glna Cross, Karen Preato, Timothy Greene

Game Time	VANDY	Score	Diff	BUTLER
07:14				10 ZEINSTRAL substitution in
07:09	11 OLIVER J turnover bad pass (1)			12 CARMODY L steal (3)
07:04		<b>43-22</b>	<b>21</b>	12 CARMODY L 2pt FG fast break from turnover in the paint, layup made (4)
07:03	11 OLIVER J foul shooting (1 - 4)			12 CARMODY L foul drawn (3)
07:03		<b>43-23</b>	<b>20</b>	12 CARMODY L free throw fast break 1 - 1 made (5)
06:51	10 NWABA J turnover bad pass (1)			
06:43				12 CARMODY L 2pt FG from turnover in the paint, driving layup missed
06:40	defensive rebound (18)			
06:38	1 BLAKES M foul drawn (3)			12 CARMODY L foul personal (2 - 4)
06:18	12 PIERRE K 2pt FG in the paint, jump shot made (15)	<b>45-23</b>	<b>22</b>	
05:57	12 PIERRE K foul personal (2 - 5)			24 CARTER C foul drawn (2)
05:57	12 PIERRE K substitution out			
05:57	14 MITCHELL A substitution in			
05:57				24 CARTER C free throw 1 - 2 missed
05:57				offensive dead ball rebound (2)
05:57		<b>45-24</b>	<b>21</b>	24 CARTER C free throw 2 - 2 made (5)
05:45	11 OLIVER J 2pt FG in the paint, layup made (2)	<b>47-24</b>	<b>23</b>	
05:45	5 KAPINUS L assist (1)			
05:36	1 BLAKES M foul drawn (4)			12 CARMODY L foul offensive (3 - 5)
05:36				12 CARMODY L turnover offensive (5)
05:36				2 MAKALUSKY R substitution out
05:36				12 CARMODY L substitution out
05:36				3 WIGGINS A substitution in
05:36				14 LAND J substitution in
05:14	1 BLAKES M foul drawn (5)			10 ZEINSTRAL foul shooting (1 - 6)
05:14				24 CARTER C substitution out
05:14				31 STODDARD L substitution in
05:14	1 BLAKES M free throw 1 - 2 made (20)	<b>48-24</b>	<b>24</b>	
05:14	1 BLAKES M free throw 2 - 2 made (21)	<b>49-24</b>	<b>25</b>	
04:58				14 LAND J 2pt FG in the paint, layup missed
04:55	10 NWABA J defensive rebound (4)			
04:50	14 MITCHELL A 2pt FG in the paint, turnaround jump shot made (6)	<b>51-24</b>	<b>27</b>	
04:50	1 BLAKES M assist (1)			
04:36		<b>51-27</b>	<b>24</b>	10 ZEINSTRAL 3pt FG , jump shot made (3)
04:36				14 LAND J assist (2)
04:22	14 MITCHELL A turnover travel (1)			
04:22	Timeout media			
04:12		<b>51-29</b>	<b>22</b>	3 WIGGINS A 2pt FG from turnover in the paint, floating jump shot made (2)
04:12				10 ZEINSTRAL assist (1)
03:52	14 MITCHELL A turnover lost ball (2)			14 LAND J steal (1)
03:40	5 KAPINUS L foul shooting (1 - 6)			14 LAND J foul drawn (1)
03:40		<b>51-30</b>	<b>21</b>	14 LAND J free throw 1 - 2 made (1)
03:40		<b>51-31</b>	<b>20</b>	14 LAND J free throw 2 - 2 made (2)
03:40	14 MITCHELL A substitution out			
03:40	12 PIERRE K substitution in			
03:24	1 BLAKES M 2pt FG outside the paint, pull up jump shot missed			



**Butler at Vanderbilt**

11/17/24 Memorial Gymnasium, Nashville  
2024-25 Women's Basketball

**Game Time:** 2:00 PM  
**Game Duration:** 1:45  
**Attendance:** 2,615

**Officials:** Gina Cross, Karen Preato, Timothy Greene

Game Time	VANDY	Score	Diff	BUTLER
03:20				31 STODDARD L defensive rebound (1)
03:11	5 KAPINUS L substitution out			
03:11	13 PISSOTT J substitution in			
03:06				21 STRANDE C 2pt FG in the paint, driving layup missed
03:04	12 PIERRE K defensive rebound (4)			
02:41	13 PISSOTT J 3pt FG , jump shot missed			
02:38	13 PISSOTT J offensive rebound (2)			
02:36	1 BLAKES M foul drawn (6)			10 ZEINSTRA L foul personal (2 - 7)
02:36	1 BLAKES M free throw 1 - 2 missed			
02:36	offensive dead ball rebound (3)			
02:36	1 BLAKES M free throw 2 - 2 made (22)	<b>52-31</b>	<b>21</b>	
02:22		<b>52-33</b>	<b>19</b>	21 STRANDE C 2pt FG in the paint, jump shot made (11)
02:15	1 BLAKES M turnover bad pass (2)			
02:15	Timeout 30 Sec			
02:05				14 LAND J 3pt FG from turnover, jump shot missed
02:00	defensive rebound (22)			
01:48	12 PIERRE K foul drawn (3)			31 STODDARD L foul shooting (1 - 8)
01:48	12 PIERRE K free throw 1 - 2 made (16)	<b>53-33</b>	<b>20</b>	
01:48	12 PIERRE K free throw 2 - 2 made (17)	<b>54-33</b>	<b>21</b>	
01:30				3 WIGGINS A 2pt FG in the paint, driving layup missed
01:28	12 PIERRE K defensive rebound (5)			
01:25	12 PIERRE K 2pt FG fast break in the paint, pull up jump shot made (19)	<b>56-33</b>	<b>23</b>	
01:08		<b>56-36</b>	<b>20</b>	21 STRANDE C 3pt FG , jump shot made (14)
01:08				3 WIGGINS A assist (1)
00:47	1 BLAKES M 3pt FG , jump shot made (25)	<b>59-36</b>	<b>23</b>	
00:47	11 OLIVER J assist (5)			
00:26				14 LAND J 3pt FG , jump shot missed
00:22	13 PISSOTT J defensive rebound (3)			
00:13	1 BLAKES M foul offensive (3 - 7)			31 STODDARD L foul drawn (1)
00:13	1 BLAKES M turnover offensive (3)			
00:13	11 OLIVER J substitution out			
00:13	24 MAKURAT A substitution in			
00:13	1 BLAKES M substitution out			
00:13	5 KAPINUS L substitution in			
00:02				14 LAND J 2pt FG from turnover outside the paint, pull up jump shot missed
00:00	12 PIERRE K defensive rebound (6)			

**END OF PERIOD**

**VANDY 59-36 BUTLER**



**Butler at Vanderbilt**

11/17/24 Memorial Gymnasium, Nashville  
2024-25 Women's Basketball

Game Time: 2:00 PM  
Game Duration: 1:45  
Attendance: 2,615

Officials: Gina Cross, Karen Preato, Timothy Greene

**Butler - 16**

NO.	Name	F	Min	FG			Rebounds			Fouls		TP	AS	TO	ST	Blocks		+/-
				M-A	3P	FT	OR	DR	TOT	PF	FD					BS	BA	
24	Cristen Carter	F	04:46	0-0	0-0	1-2	0	0	0	1	1	1	0	0	0	0	0	-6
1	Karsyn Norman	G	00:59	0-0	0-0	0-0	0	0	0	0	0	0	0	1	0	0	0	-3
2	Riley Makalusky	G	04:24	0-0	0-0	0-0	0	1	1	1	0	0	0	0	0	0	0	-6
11	Kilyn McGuff	G	02:46	0-0	0-0	0-0	0	0	0	0	0	0	0	1	0	0	0	-6
21	Caroline Strande	G	10:00	2-3	1-1	0-0	0	0	0	0	1	5	0	0	0	0	0	-6
32	Sydney Jaynes		00:00	0-0	0-0	0-0	0	0	0	0	0	0	0	0	0	0	0	0
12	Lily Carmody		03:25	1-3	0-1	1-1	0	0	0	3	3	3	0	3	2	0	0	-3
10	Lily Zeinstra		07:14	1-1	1-1	0-0	0	0	0	2	0	3	1	0	0	0	0	0
3	Ari Wiggins		05:36	1-2	0-0	0-0	0	0	0	0	0	2	1	0	0	0	0	0
14	Jocelyn Land		05:36	0-4	0-2	2-2	0	0	0	0	1	2	1	0	1	0	0	0
31	Lilly Stoddard		05:14	0-0	0-0	0-0	0	1	1	1	1	0	0	0	0	0	0	0
Team							0	0	0		0		1					
<b>Totals</b>				5-13	2-5	4-5	0	2	2	8	7	16	3	6	3	0	0	-6

Shooting By Period		
3 <sup>rd</sup> FG%	5-13	38.5%
3PT%	2-5	40.0%
FT%	4-5	80%
GM FG%	5-13	38.5%
3PT%	2-5	40.0%
FT%	4-5	80.0%

Dead Ball Rebounds: 1, 0

Technical Fouls::NONE

**Vanderbilt - 22**

NO.	Name	F	Min	FG			Rebounds			Fouls		TP	AS	TO	ST	Blocks		+/-
				M-A	3P	FT	OR	DR	TOT	PF	FD					BS	BA	
10	Jane Nwaba	F	10:00	0-0	0-0	0-0	1	2	3	0	1	0	0	1	0	0	0	6
12	Khamil Pierre	F	07:43	2-3	0-0	3-4	0	3	3	1	2	7	1	0	1	0	0	8
1	Mikayla Blakes	G	09:47	3-5	2-3	3-4	0	0	0	2	4	11	1	2	0	0	0	6
4	Madison Greene	G	01:19	0-0	0-0	0-0	0	0	0	2	1	0	0	1	1	0	0	3
11	Jordyn Oliver	G	09:47	1-1	0-0	0-0	0	0	0	1	0	2	2	1	0	0	0	6
5	Leilani Kapinus		05:43	0-0	0-0	0-0	0	0	0	1	0	0	1	0	1	0	0	0
14	Aiyana Mitchell		02:17	1-1	0-0	0-0	0	0	0	0	0	2	0	2	0	0	0	-2
13	Justine Pissott		03:11	0-1	0-1	0-0	1	1	2	0	0	0	0	0	0	0	0	3
24	Aga Makurat		00:13	0-0	0-0	0-0	0	0	0	0	0	0	0	0	0	0	0	0
Team							0	2	2		0		0					
<b>Totals</b>				7-11	2-4	6-8	2	8	10	7	8	22	5	7	3	0	0	6

Shooting By Period		
3 <sup>rd</sup> FG%	7-11	63.6%
3PT%	2-4	50.0%
FT%	6-8	75%
GM FG%	7-11	63.6%
3PT%	2-4	50.0%
FT%	6-8	75.0%

Dead Ball Rebounds: 2, 0

Technical Fouls::NONE

	BUTLER	VANDY
Biggest lead	0 (1 <sup>st</sup> 10:00)	27 (3 <sup>rd</sup> 4:50)
Best Scoring Run	7(3 <sup>rd</sup> 3:40)	6(3 <sup>rd</sup> 8:25)
Lead Changes	0	
Times Tied	0	
Time with Lead	00:00	09:30

Points from	BUTLER	VANDY
Turnovers	7	8
Paint	6	10
Second Chance	0	1
Fast Breaks	3	2
Bench	10	2

	Period by Period Scoring				
	1st	2nd	3rd	4th	TOT
BUTLER	8	12	16	16	52
VANDY	17	20	22	22	81



**Butler at Vanderbilt**

11/17/24 Memorial Gymnasium, Nashville  
2024-25 Women's Basketball

**Game Time:** 2:00 PM  
**Game Duration:** 1:45  
**Attendance:** 2,615

**Officials:** Glna Cross, Karen Preato, Timothy Greene

**Period 4**

**Quarter Starters:**

<b>VANDY</b>	4 Greene M	5 Kapinus L	13 Pissott J	14 Mitchell A	24 Makurat A
<b>BUTLER</b>	1 Norman K	2 Makaluskusky R	10 Zeinstra L	12 Carmody L	24 Carter C

Game Time	VANDY	Score	Diff	BUTLER
10:00	10 NWABA J substitution out			
10:00	12 PIERRE K substitution out			
10:00	4 GREENE M substitution in			
10:00	14 MITCHELL A substitution in			
10:00				3 WIGGINS A substitution out
10:00				14 LAND J substitution out
10:00				21 STRANDE C substitution out
10:00				31 STODDARD L substitution out
10:00				1 NORMAN K substitution in
10:00				2 MAKALUSKY R substitution in
10:00				12 CARMODY L substitution in
10:00				24 CARTER C substitution in
09:53				10 ZEINSTRAL L 2pt FG in the paint, driving layup blocked
09:53	5 KAPINUS L block (1)			
09:52				offensive rebound (17)
09:49	5 KAPINUS L steal (3)			2 MAKALUSKY R turnover lost ball (3)
09:29	14 MITCHELL A turnover lost ball (3)			12 CARMODY L steal (4)
09:15				24 CARTER C turnover 3 seconds (1)
09:00	13 PISSOTT J 2pt FG from turnover outside the paint, step back jump shot missed			
08:57	13 PISSOTT J offensive rebound (4)			
08:53	13 PISSOTT J foul drawn (1)			2 MAKALUSKY R foul shooting (3 - 1)
08:53	13 PISSOTT J free throw 1 - 2 made (3)	<b>60-36</b>	<b>24</b>	
08:53	13 PISSOTT J free throw 2 - 2 made (4)	<b>61-36</b>	<b>25</b>	
08:42				1 NORMAN K 2pt FG outside the paint, turnaround jump shot missed
08:39	13 PISSOTT J defensive rebound (5)			
08:35	13 PISSOTT J 3pt FG , jump shot missed			
08:32	14 MITCHELL A offensive rebound (5)			
08:28	24 MAKURAT A 3pt FG second chance, jump shot made (3)	<b>64-36</b>	<b>28</b>	
08:28	14 MITCHELL A assist (1)			
08:09				1 NORMAN K substitution out
08:09				2 MAKALUSKY R substitution out
08:09				10 ZEINSTRAL L substitution out
08:09				3 WIGGINS A substitution in
08:09				11 MCGUFF K substitution in
08:09				21 STRANDE C substitution in
08:01				21 STRANDE C 2pt FG in the paint, driving layup missed
07:59	13 PISSOTT J defensive rebound (6)			
07:59	13 PISSOTT J foul drawn (2)			24 CARTER C foul personal (3 - 2)
07:37	24 MAKURAT A turnover bad pass (1)			
07:31				3 WIGGINS A turnover lost ball (2)
07:19	5 KAPINUS L 2pt FG from turnover in the paint, driving layup made (4)	<b>66-36</b>	<b>30</b>	



**Butler at Vanderbilt**

11/17/24 Memorial Gymnasium, Nashville  
2024-25 Women's Basketball

**Game Time:** 2:00 PM  
**Game Duration:** 1:45  
**Attendance:** 2,615

**Officials:** Gina Cross, Karen Preato, Timothy Greene

Game Time	VANDY	Score	Diff	BUTLER
07:01	24 MAKURAT A foul shooting (1 - 1)			3 WIGGINS A foul drawn (1)
07:01	4 GREENE M substitution out			
07:01	14 MITCHELL A substitution out			
07:01	1 BLAKES M substitution in			
07:01	12 PIERRE K substitution in			
07:01				24 CARTER C substitution out
07:01				32 JAYNES S substitution in
07:01				3 WIGGINS A free throw 1 - 2 missed
07:01				offensive dead ball rebound (3)
07:01		<b>66-37</b>	<b>29</b>	3 WIGGINS A free throw 2 - 2 made (3)
06:33	24 MAKURAT A 2pt FG outside the paint, pull up jump shot missed			
06:32				defensive rebound (18)
06:13	jump ball situation			
06:13	24 MAKURAT A steal (1)			12 CARMODY L turnover lost ball (6)
06:01	12 PIERRE K 2pt FG from turnover outside the paint, pull up jump shot missed			
05:58				11 MCGUFF K defensive rebound (3)
05:56				11 MCGUFF K turnover travel (5)
05:56				12 CARMODY L substitution out
05:56				10 ZEINSTRAL substitution in
05:56	13 PISSOTT J substitution out			
05:56	24 MAKURAT A substitution out			
05:56	10 NWABA J substitution in			
05:56	11 OLIVER J substitution in			
05:55	1 BLAKES M 2pt FG from turnover outside the paint, jump shot made (27)	<b>68-37</b>	<b>31</b>	
05:55	11 OLIVER J assist (6)			
05:43		<b>68-40</b>	<b>28</b>	21 STRANDE C 3pt FG , jump shot made (17)
05:43				3 WIGGINS A assist (2)
05:20	10 NWABA J 3pt FG , jump shot made (6)	<b>71-40</b>	<b>31</b>	
05:20	12 PIERRE K assist (3)			
05:05				11 MCGUFF K 2pt FG in the paint, driving layup missed
05:03				11 MCGUFF K offensive rebound (4)
04:58		<b>71-42</b>	<b>29</b>	11 MCGUFF K 2pt FG second chance in the paint, layup made (5)
04:54	12 PIERRE K 2pt FG fast break in the paint, layup made (21)	<b>73-42</b>	<b>31</b>	
04:54	1 BLAKES M assist (2)			
04:38				11 MCGUFF K 3pt FG , jump shot missed
04:34	11 OLIVER J defensive rebound (3)			
04:26	10 NWABA J 3pt FG , jump shot made (9)	<b>76-42</b>	<b>34</b>	
04:26	5 KAPINUS L assist (2)			
04:08				32 JAYNES S 2pt FG outside the paint, jump shot missed
04:05	12 PIERRE K defensive rebound (7)			
03:55	12 PIERRE K foul drawn (4)			32 JAYNES S foul shooting (2 - 3)
03:55				Timeout media
03:55	5 KAPINUS L substitution out			
03:55	2 BROWN J substitution in			
03:55				11 MCGUFF K substitution out
03:55				32 JAYNES S substitution out





**Butler at Vanderbilt**

11/17/24 Memorial Gymnasium, Nashville  
2024-25 Women's Basketball

**Game Time:** 2:00 PM  
**Game Duration:** 1:45  
**Attendance:** 2,615

**Officials:** Gina Cross, Karen Preato, Timothy Greene

Game Time	VANDY	Score	Diff	BUTLER
03:55				14 LAND J substitution in
03:55				31 STODDARD L substitution in
03:55	12 PIERRE K free throw 1 - 2 made (22)	<b>77-42</b>	<b>35</b>	
03:55	12 PIERRE K free throw 2 - 2 missed			
03:53	2 BROWN J offensive rebound (1)			
03:49	10 NWABA J turnover bad pass (2)			10 ZEINSTRAL steal (1)
03:45		<b>77-44</b>	<b>33</b>	3 WIGGINS A 2pt FG fast break from turnover in the paint, driving layup made (5)
03:45				10 ZEINSTRAL assist (2)
03:19	12 PIERRE K 2pt FG outside the paint, turnaround jump shot made (24)	<b>79-44</b>	<b>35</b>	
03:06		<b>79-47</b>	<b>32</b>	21 STRANDE C 3pt FG , jump shot made (20)
03:06				3 WIGGINS A assist (3)
02:48	1 BLAKES M 3pt FG , jump shot missed			
02:44	12 PIERRE K offensive rebound (8)			
02:43	12 PIERRE K 2pt FG second chance in the paint, layup missed			
02:40				31 STODDARD L defensive rebound (2)
02:34		<b>79-49</b>	<b>30</b>	21 STRANDE C 2pt FG in the paint, layup made (22)
02:34				3 WIGGINS A assist (4)
02:31	Timeout 30 Sec			
02:31	12 PIERRE K substitution out			
02:31	30 WILSON T substitution in			
02:13	2 BROWN J 2pt FG in the paint, driving layup missed			
02:10				31 STODDARD L defensive rebound (3)
02:02	11 OLIVER J steal (2)			14 LAND J turnover lost ball (1)
01:54	1 BLAKES M 2pt FG fast break from turnover in the paint, layup made (29)	<b>81-49</b>	<b>32</b>	
01:54	2 BROWN J assist (1)			
01:34	11 OLIVER J foul personal (2 - 2)			10 ZEINSTRAL foul drawn (1)
01:22		<b>81-52</b>	<b>29</b>	3 WIGGINS A 3pt FG , jump shot made (8)
01:22				21 STRANDE C assist (1)
00:51	1 BLAKES M 3pt FG , step back jump shot missed			
00:47				defensive rebound (23)
00:40				10 ZEINSTRAL 3pt FG , jump shot missed
00:35				14 LAND J offensive rebound (1)
00:31	10 NWABA J steal (1)			3 WIGGINS A turnover bad pass (3)
00:10	11 OLIVER J 2pt FG from turnover outside the paint, pull up jump shot missed			
00:07				21 STRANDE C defensive rebound (3)
<b>END OF GAME</b>				
<b>VANDY 81-52 BUTLER</b>				



**Butler at Vanderbilt**

11/17/24 Memorial Gymnasium, Nashville  
2024-25 Women's Basketball

Game Time: 2:00 PM  
Game Duration: 1:45  
Attendance: 2,615

Officials: Gina Cross, Karen Preato, Timothy Greene

**Butler - 16**

NO.	Name	F/G	Min	FG			Rebounds			Fouls		TP	AS	TO	ST	Blocks		+/-
				M-A	M-A	M-A	OR	DR	TOT	PF	FD					BS	BA	
24	Cristen Carter	F	02:59	0-0	0-0	0-0	0	0	0	1	0	0	0	1	0	0	0	-7
1	Karsyn Norman	G	01:51	0-1	0-0	0-0	0	0	0	0	0	0	0	0	0	0	0	-5
2	Riley Makalusky	G	01:51	0-0	0-0	0-0	0	0	0	1	0	0	0	1	0	0	0	-5
11	Kilyn McGuff	G	04:14	1-3	0-1	0-0	1	1	2	0	0	2	0	1	0	0	0	-6
21	Caroline Strande	G	08:09	3-4	2-2	0-0	0	1	1	0	0	8	1	0	0	0	0	-1
12	Lily Carmody		04:04	0-0	0-0	0-0	0	0	0	0	0	0	0	1	1	0	0	-6
3	Ari Wiggins		08:09	2-2	1-1	1-2	0	0	0	0	1	6	3	2	0	0	0	-1
32	Sydney Jaynes		03:06	0-1	0-0	0-0	0	0	0	1	0	0	0	0	0	0	0	-4
10	Lily Zeinstra		07:47	0-2	0-1	0-0	0	0	0	0	1	0	1	0	1	0	1	-5
14	Jocelyn Land		03:55	0-0	0-0	0-0	1	0	1	0	0	0	0	1	0	0	0	5
31	Lilly Stoddard		03:55	0-0	0-0	0-0	0	2	2	0	0	0	0	0	0	0	0	5
Team							1	2	3			0		0				
<b>Totals</b>				6-13	3-5	1-2	3	6	9	3	2	16	5	7	2	0	1	-6

Shooting By Period		
4 <sup>th</sup> FG%	6-13	46.2%
3PT%	3-5	60.0%
FT%	1-2	50%
GM FG%	6-13	46.2%
3PT%	3-5	60.0%
FT%	1-2	50.0%

Dead Ball Rebounds: 1, 0

Technical Fouls::NONE

**Vanderbilt - 22**

NO.	Name	F/G	Min	FG			Rebounds			Fouls		TP	AS	TO	ST	Blocks		+/-
				M-A	M-A	M-A	OR	DR	TOT	PF	FD					BS	BA	
10	Jane Nwaba	F	05:56	2-2	2-2	0-0	0	0	0	0	0	6	0	1	1	0	0	0
12	Khamil Pierre	F	04:30	2-4	0-0	1-2	1	1	2	0	1	5	1	0	0	0	0	0
1	Mikayla Blakes	G	07:01	2-4	0-2	0-0	0	0	0	0	0	4	1	0	0	0	0	-1
4	Madison Greene	G	02:59	0-0	0-0	0-0	0	0	0	0	0	0	0	0	0	0	0	7
11	Jordyn Oliver	G	05:56	0-1	0-0	0-0	0	1	1	1	0	0	1	0	1	0	0	0
5	Leilani Kapinus		06:05	1-1	0-0	0-0	0	0	0	0	0	2	1	0	1	1	0	11
13	Justine Pissott		04:04	0-2	0-1	2-2	1	2	3	0	2	2	0	0	0	0	0	6
24	Aga Makurat		04:04	1-2	1-1	0-0	0	0	0	1	0	3	0	1	1	0	0	6
14	Aiyana Mitchell		02:59	0-0	0-0	0-0	1	0	1	0	0	0	1	1	0	0	0	7
2	Jada Brown		03:55	0-1	0-0	0-0	1	0	1	0	0	0	1	0	0	0	0	-5
30	Trinity Wilson		02:31	0-0	0-0	0-0	0	0	0	0	0	0	0	0	0	0	0	-1
Team							0	0	0			0		0				
<b>Totals</b>				8-17	3-6	3-4	4	4	8	2	3	22	6	3	4	1	0	6

Shooting By Period		
4 <sup>th</sup> FG%	8-17	47.1%
3PT%	3-6	50.0%
FT%	3-4	75%
GM FG%	8-17	47.1%
3PT%	3-6	50.0%
FT%	3-4	75.0%

Dead Ball Rebounds: 0, 0

Technical Fouls::NONE

	BUTLER	VANDY
Biggest lead	0 (1 <sup>st</sup> 10:00)	35 (4 <sup>th</sup> 3:55)
Best Scoring Run	5(4 <sup>th</sup> 2:34)	7(4 <sup>th</sup> 7:19)
Lead Changes	0	
Times Tied	0	
Time with Lead	00:00	09:53

	BUTLER	VANDY
Points from		
Turnovers	2	8
Paint	6	6
Second Chance	2	5
Fast Breaks	2	4
Bench	6	7

	Period by Period Scoring				
	1st	2nd	3rd	4th	TOT
BUTLER	8	12	16	16	52
VANDY	17	20	22	22	81



**Butler at Vanderbilt**

11/17/24 Memorial Gymnasium, Nashville  
2024-25 Women's Basketball

Game Time: 2:00 PM  
Game Duration: 1:45  
Attendance: 2,615

Officials: Gina Cross, Karen Preato, Timothy Greene

**Butler - 32**

NO.	Name	Min	FG			Rebounds			Fouls		TP	AS	TO	ST	Blocks		+/-
			M-A	M-A	M-A	OR	DR	TOT	PF	FD					BS	BA	
24	Cristen Carter	F 07:45	0-0	0-0	1-2	0	0	0	2	1	1	0	1	0	0	0	-13
1	Karsyn Norman	G 02:50	0-1	0-0	0-0	0	0	0	0	0	0	0	1	0	0	0	-8
2	Riley Makalusky	G 06:15	0-0	0-0	0-0	0	1	1	2	0	0	0	1	0	0	0	-11
11	Kilyn McGuff	G 07:00	1-3	0-1	0-0	1	1	2	0	0	2	0	2	0	0	0	-12
21	Caroline Strande	G 18:09	5-7	3-3	0-0	0	1	1	0	1	13	1	0	0	0	0	-7
12	Lily Carmody	07:29	1-3	0-1	1-1	0	0	0	3	3	3	0	4	3	0	0	-9
10	Lily Zeinstra	15:01	1-3	1-2	0-0	0	0	0	2	1	3	2	0	1	0	1	-5
3	Ari Wiggins	13:45	3-4	1-1	1-2	0	0	0	0	1	8	4	2	0	0	0	-1
14	Jocelyn Land	09:31	0-4	0-2	2-2	1	0	1	0	1	2	1	1	1	0	0	5
31	Lilly Stoddard	09:09	0-0	0-0	0-0	0	3	3	1	1	0	0	0	0	0	0	5
32	Sydney Jaynes	03:06	0-1	0-0	0-0	0	0	0	1	0	0	0	0	0	0	0	-4
Team						1	2	3			0		1				
<b>Totals</b>			11-26	5-10	5-7	3	8	11	11	9	32	8	13	5	0	1	-12

Shooting By Period		
3 <sup>rd</sup> FG%	5-13	38.5%
3PT%	2-5	40.0%
FT%	4-5	80%
4 <sup>th</sup> FG%	6-13	46.2%
3PT%	3-5	60.0%
FT%	1-2	50%
GM FG%	11-26	42.3%
3PT%	5-10	50.0%
FT%	5-7	71.4%

Dead Ball Rebounds: 2, 0

Technical Fouls::NONE

**Vanderbilt - 44**

NO.	Name	Min	FG			Rebounds			Fouls		TP	AS	TO	ST	Blocks		+/-
			M-A	M-A	M-A	OR	DR	TOT	PF	FD					BS	BA	
10	Jane Nwaba	F 15:56	2-2	2-2	0-0	1	2	3	0	1	6	0	2	1	0	0	6
12	Khamil Pierre	F 12:13	4-7	0-0	4-6	1	4	5	1	3	12	2	0	1	0	0	8
1	Mikayla Blakes	G 16:48	5-9	2-5	3-4	0	0	0	2	4	15	2	2	0	0	0	5
4	Madison Greene	G 04:18	0-0	0-0	0-0	0	0	0	2	1	0	0	1	1	0	0	10
11	Jordyn Oliver	G 15:43	1-2	0-0	0-0	0	1	1	2	0	2	3	1	1	0	0	6
5	Leilani Kapinus	11:48	1-1	0-0	0-0	0	0	0	1	0	2	2	0	2	1	0	11
14	Aiyana Mitchell	05:16	1-1	0-0	0-0	1	0	1	0	0	2	1	3	0	0	0	5
13	Justine Pissott	07:15	0-3	0-2	2-2	2	3	5	0	2	2	0	0	0	0	0	9
24	Aga Makurat	04:17	1-2	1-1	0-0	0	0	0	1	0	3	0	1	1	0	0	6
2	Jada Brown	03:55	0-1	0-0	0-0	1	0	1	0	0	0	1	0	0	0	0	-5
30	Trinity Wilson	02:31	0-0	0-0	0-0	0	0	0	0	0	0	0	0	0	0	0	-1
Team						0	2	2			0		0				
<b>Totals</b>			15-28	5-10	9-12	6	12	18	9	11	44	11	10	7	1	0	12

Shooting By Period		
3 <sup>rd</sup> FG%	7-11	63.6%
3PT%	2-4	50.0%
FT%	6-8	75%
4 <sup>th</sup> FG%	8-17	47.1%
3PT%	3-6	50.0%
FT%	3-4	75%
GM FG%	15-28	53.6%
3PT%	5-10	50.0%
FT%	9-12	75.0%

Dead Ball Rebounds: 2, 0

Technical Fouls::NONE

	BUTLER	VANDY
Biggest lead	0 (1 <sup>st</sup> 10:00)	35 (4 <sup>th</sup> 3:55)
Best Scoring Run	7(3 <sup>rd</sup> 3:40)	10(4 <sup>th</sup> 7:19)
Lead Changes	0	
Times Tied	0	
Time with Lead	00:00	19:30

Points from	BUTLER	VANDY
Turnovers	9	16
Paint	12	16
Second Chance	2	6
Fast Breaks	5	6
Bench	16	9

	Period by Period Scoring				
	1st	2nd	3rd	4th	TOT
BUTLER	8	12	16	16	52
VANDY	17	20	22	22	81



**Butler at Vanderbilt**

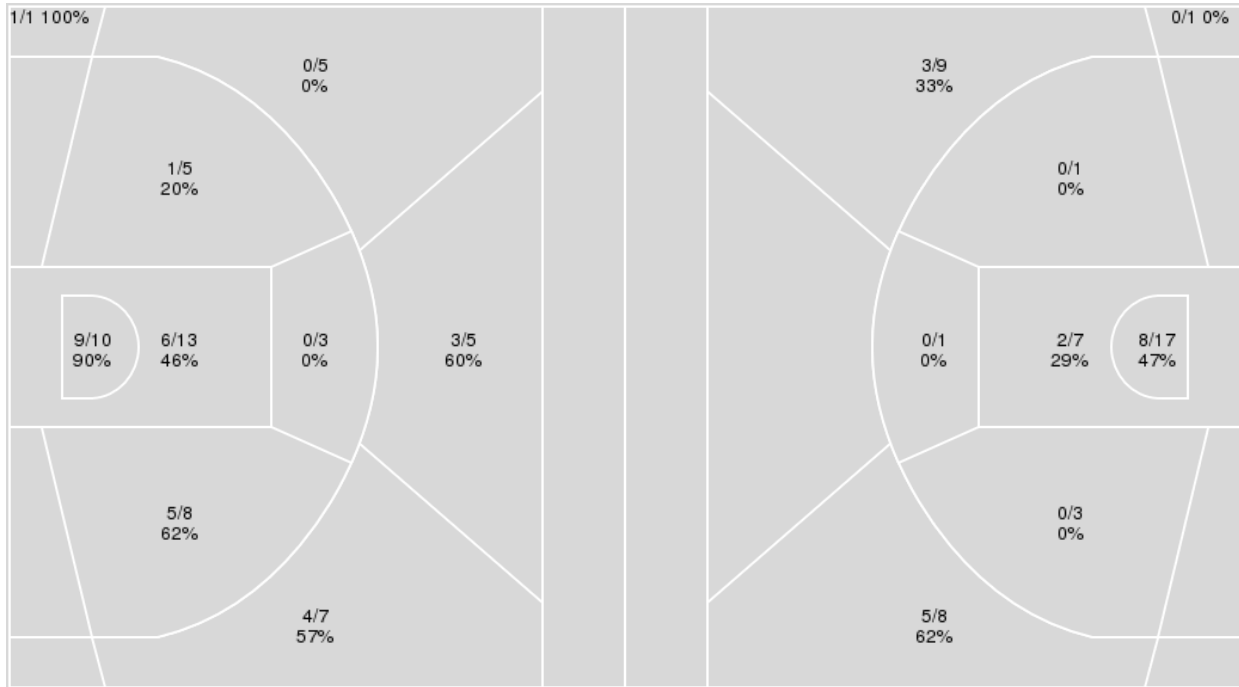
11/17/24 Memorial Gymnasium, Nashville  
2024-25 Women's Basketball

Officials: Gina Cross, Karen Preato, Timothy Greene

{ Players => 1, 2, 4, 5, 10, 11, 12, 13, 14, 23, 24, 30, 35; } FG Types => { Players => All; } FG Types => All; Results => All;  
All; Results => All;

**Vanderbilt**

**Butler**



Vanderbilt	M/A	%
Field Goals	29/57	51
2 Points	21/39	54
3 Points	8/18	44
Free Throws	15/19	79

Butler	M/A	%
Field Goals	18/47	38
2 Points	10/29	34
3 Points	8/18	44
Free Throws	8/11	73



**Butler at Vanderbilt**

11/17/24 Memorial Gymnasium, Nashville  
2024-25 Women's Basketball

Game Time: 2:00 PM  
Game Duration: 1:45  
Attendance: 2,615

Officials: Gina Cross, Karen Preato, Timothy Greene

**Butler**

No	Name	Mins		Score		Points Diff		Points per Min		Assists		Rebounds		Steals		Turnovers	
		On	Off	On	Off	On	Off	On	Off	On	Off	On	Off	On	Off	On	Off
1	Karsyn Norman	14:31	25:29	13 - 31	39 - 50	-18	-11	0.90	1.53	2	10	10	15	5	7	14	16
2	Riley Makalusky	20:28	19:32	13 - 41	39 - 40	-28	-1	0.64	2.00	1	11	15	10	8	4	22	8
3	Ari Wiggins	19:34	20:26	33 - 39	19 - 42	-6	-23	1.69	0.93	9	3	12	13	4	8	10	20
10	Lily Zeinstra	17:34	22:26	31 - 38	21 - 43	-7	-22	1.76	0.94	8	4	9	16	5	7	6	24
11	Kilyn McGuff	25:42	14:18	24 - 51	28 - 30	-27	-2	0.93	1.96	5	7	18	7	7	5	24	6
12	Lily Carmody	15:36	24:24	10 - 29	42 - 52	-19	-10	0.64	1.72	1	11	10	15	5	7	17	13
14	Jocelyn Land	14:12	25:48	33 - 28	19 - 53	5	-34	2.32	0.74	10	2	7	18	4	8	5	25
21	Caroline Strande	32:23	07:37	51 - 67	1 - 14	-16	-13	1.57	0.13	12	0	19	6	10	2	22	8
24	Cristen Carter	17:34	22:26	13 - 32	39 - 49	-19	-10	0.74	1.74	1	11	11	14	7	5	18	12
31	Lilly Stoddard	09:09	30:51	22 - 17	30 - 64	5	-34	2.40	0.97	7	5	6	19	2	10	2	28
32	Sydney Jaynes	13:17	26:43	17 - 32	35 - 49	-15	-14	1.28	1.31	4	8	8	17	3	9	10	20

**Vanderbilt**

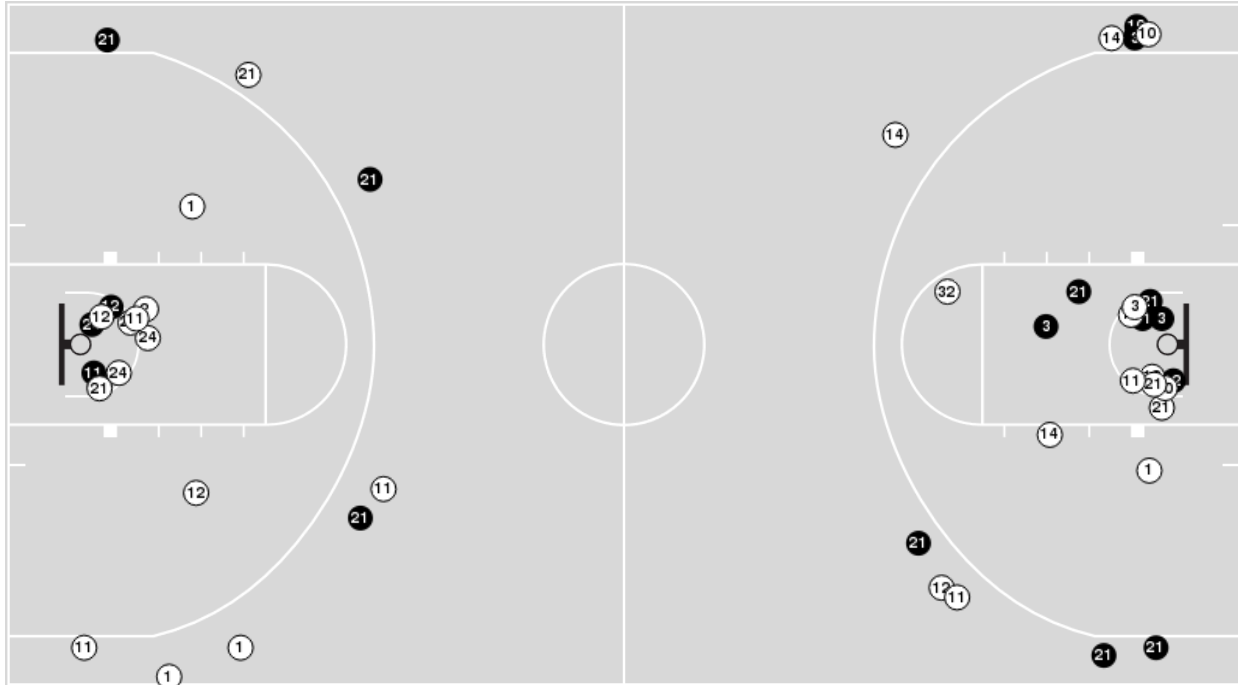
No	Name	Mins		Score		Points Diff		Points per Min		Assists		Rebounds		Steals		Turnovers	
		On	Off	On	Off	On	Off	On	Off	On	Off	On	Off	On	Off	On	Off
1	Mikayla Blakes	35:34	04:26	72 - 50	9 - 2	22	7	2.02	2.03	17	1	28	5	15	2	16	5
2	Jada Brown	03:55	36:05	5 - 10	76 - 42	-5	34	1.28	2.11	1	17	2	31	2	15	1	20
4	Madison Greene	20:20	19:40	35 - 12	46 - 40	23	6	1.72	2.34	6	12	17	16	11	6	14	7
5	Leilani Kapinus	19:58	20:02	48 - 27	33 - 25	21	8	2.40	1.65	12	6	20	13	9	8	12	9
10	Jane Nwaba	25:51	14:09	57 - 46	24 - 6	11	18	2.21	1.70	14	4	18	15	11	6	13	8
11	Jordyn Oliver	32:48	07:12	64 - 45	17 - 7	19	10	1.95	2.36	15	3	26	7	13	4	19	2
12	Khamil Pierre	23:18	16:42	49 - 38	32 - 14	11	18	2.10	1.92	11	7	18	15	10	7	12	9
13	Justine Pissott	14:22	25:38	26 - 11	55 - 41	15	14	1.81	2.15	4	14	14	19	3	14	7	14
14	Aiyana Mitchell	14:11	25:49	30 - 11	51 - 41	19	10	2.12	1.98	6	12	15	18	5	12	9	12
24	Aga Makurat	07:12	32:48	17 - 7	64 - 45	10	19	2.36	1.95	3	15	7	26	4	13	2	19
30	Trinity Wilson	02:31	37:29	2 - 3	79 - 49	-1	30	0.79	2.11	1	17	0	33	2	15	0	21



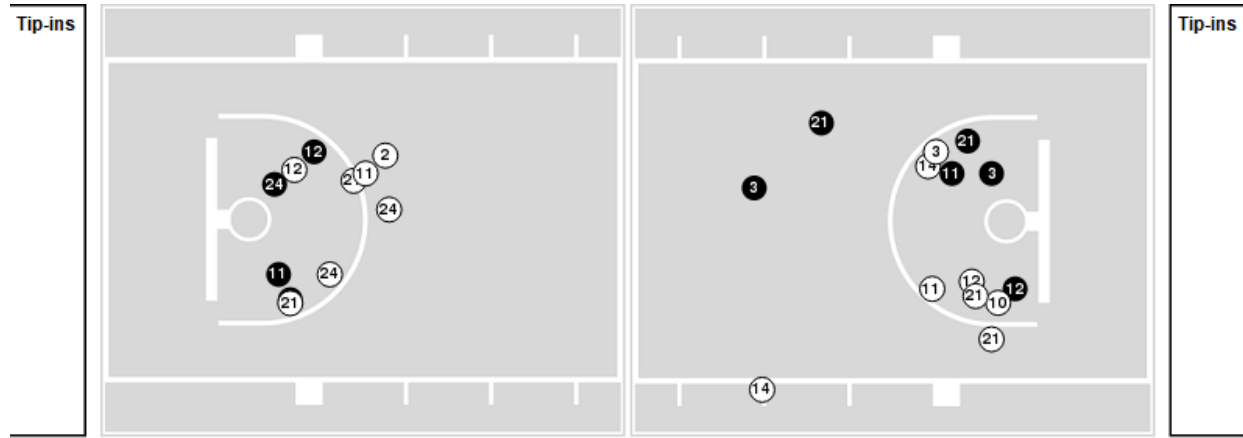
Officials: Gina Cross, Karen Preato, Timothy Greene

Players => AllFG Types=>AllResults=>All  
**Butler**

**All Field Goals**



**Blow Up Chart**



● Made    ○ Missed    N - Player Number

Butler	M/A	%
Field Goals	18/47	38
2 Points	10/29	34
3 Points	8/18	44
Free Throws	8/11	73

Butler	M/A	%
Points in the Paint	20 (10 / 24)	42
Fast Break Points	7 (4/4)	100
Second Chance Points	7 (4/6)	67
Effective FG%	47	

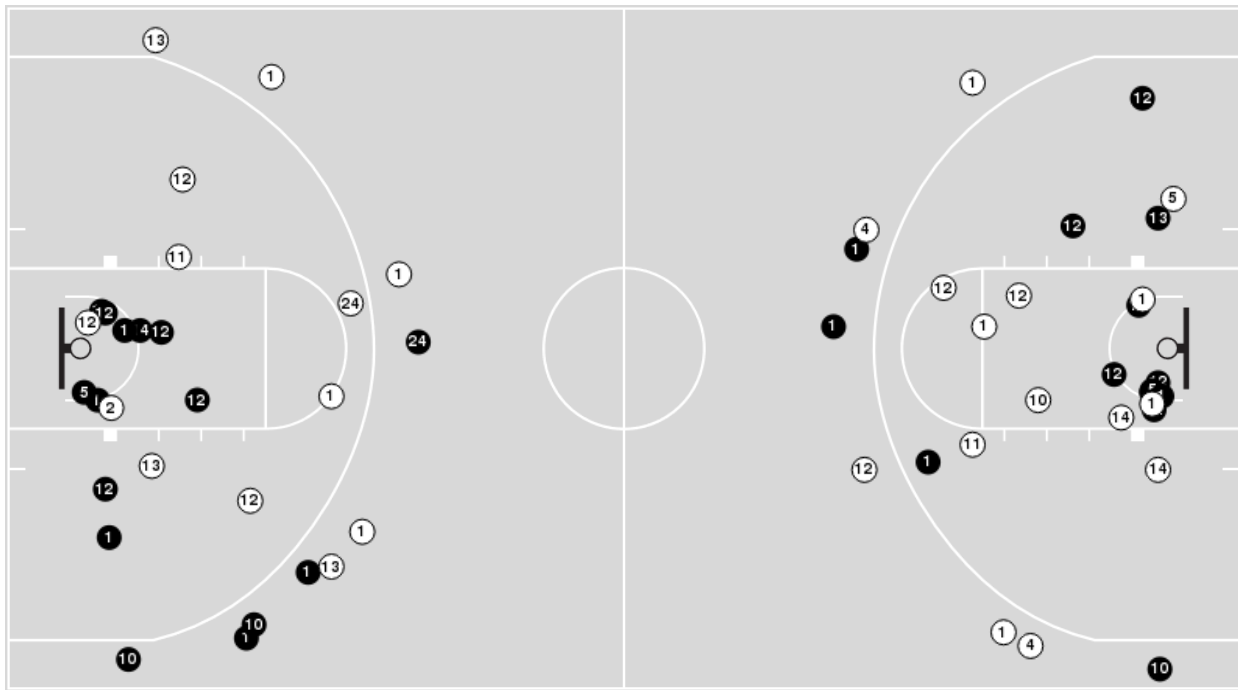


**Officials:** Gina Cross, Karen Preato, Timothy Greene

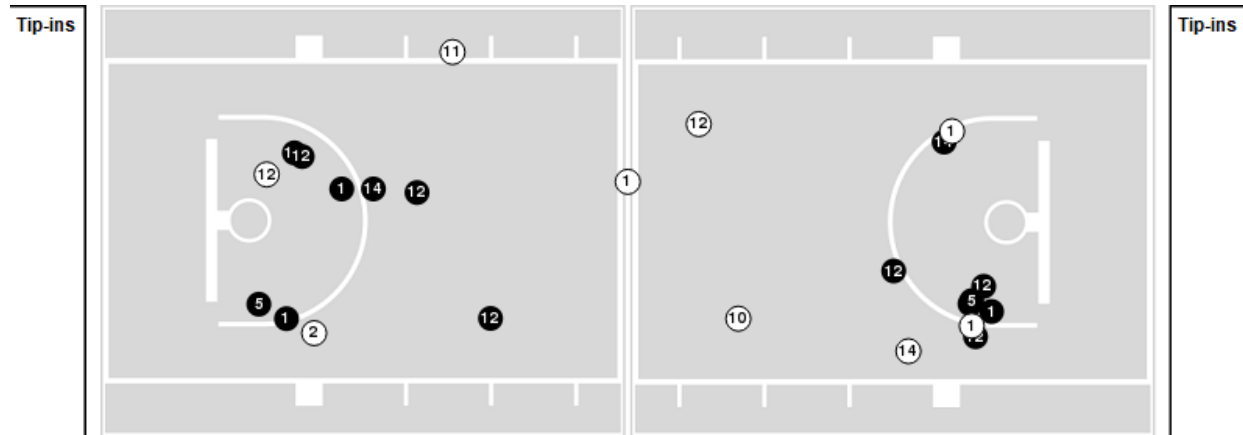
Players => 1, 2, 4, 5, 10, 11, 12, 13, 14, 23, 24, 30, 35FG Types=>AllResults=>All

**Vanderbilt**

**All Field Goals**



**Blow Up Chart**



● Made ○ Missed N - Player Number

Vanderbilt	M/A	%
Field Goals	29/57	51
2 Points	21/39	54
3 Points	8/18	44
Free Throws	15/19	79

Vanderbilt	M/A	%
Points in the Paint	30 (15 / 23)	65
Fast Break Points	14 (8/9)	89
Second Chance Points	10 (6/11)	55
Effective FG%	58	



**Butler at Vanderbilt**

11/17/24 Memorial Gymnasium, Nashville  
2024-25 Women's Basketball

**Game Time:** 2:00 PM  
**Game Duration:** 1:45  
**Attendance:** 2,615

**Officials:** Glna Cross, Karen Preato, Timothy Greene

**Butler**

Lineup	Quarter On	Time On	Quarter Off	Time Off	Time on Court	Score	Score Diff	Reb	Stl	Tov	Ass	PPP
1- Norman K/ 2- Makalusky R/ 11- McGuff K/ 21- Strande C/ 24- Carter C/	1	10:00	1	06:47	03:13	2-2	0	3	1	2	0	0.4098
1- Norman K/ 2- Makalusky R/ 11- McGuff K/ 12- Carmody L/ 24- Carter C/	1	06:47	1	04:43	02:04	1-5	-4	1	0	2	0	0.2577
2- Makalusky R/ 3- Wiggins A/ 11- McGuff K/ 12- Carmody L/ 32- Jaynes S/	1	04:43	1	02:52	01:51	0-2	-2	3	0	2	0	0.0000
3- Wiggins A/ 11- McGuff K/ 12- Carmody L/ 14- Land J/ 32- Jaynes S/	1	02:52	1	02:28	00:24	0-0	0	0	0	1	0	0.0000
3- Wiggins A/ 12- Carmody L/ 14- Land J/ 21- Strande C/ 32- Jaynes S/	1	02:28	1	01:10	01:18	2-4	-2	0	1	1	0	0.6667
3- Wiggins A/ 11- McGuff K/ 14- Land J/ 21- Strande C/ 32- Jaynes S/	1	01:10	2	10:00	01:10	3-4	-1	0	1	1	1	1.5000
1- Norman K/ 11- McGuff K/ 14- Land J/ 21- Strande C/ 32- Jaynes S/	2	10:00	2	08:11	01:49	6-3	3	1	0	0	2	3.0000
1- Norman K/ 2- Makalusky R/ 11- McGuff K/ 21- Strande C/ 32- Jaynes S/	2	08:11	2	07:05	01:06	0-7	-7	0	0	2	0	0.0000
2- Makalusky R/ 11- McGuff K/ 12- Carmody L/ 21- Strande C/ 24- Carter C/	2	07:05	2	06:02	01:03	2-2	0	1	0	1	1	1.0000
1- Norman K/ 2- Makalusky R/ 11- McGuff K/ 21- Strande C/ 24- Carter C/	2	06:02	2	02:33	03:29	4-6	-2	4	3	4	0	0.5714
2- Makalusky R/ 10- Zeinstra L/ 11- McGuff K/ 12- Carmody L/ 32- Jaynes S/	2	02:33	2	01:06	01:27	0-2	-2	1	1	1	0	0.0000
3- Wiggins A/ 10- Zeinstra L/ 11- McGuff K/ 21- Strande C/ 32- Jaynes S/	2	01:06	3	10:00	01:06	0-0	0	0	0	0	0	0.0000
1- Norman K/ 2- Makalusky R/ 11- McGuff K/ 21- Strande C/ 24- Carter C/	3	10:00	3	09:01	00:59	0-3	-3	0	0	2	0	0.0000
2- Makalusky R/ 11- McGuff K/ 12- Carmody L/ 21- Strande C/ 24- Carter C/	3	09:01	3	07:14	01:47	0-3	-3	1	1	3	0	0.0000
2- Makalusky R/ 10- Zeinstra L/ 12- Carmody L/ 21- Strande C/ 24- Carter C/	3	07:14	3	05:36	01:38	4-4	0	0	1	1	0	0.9259
3- Wiggins A/ 10- Zeinstra L/ 14- Land J/ 21- Strande C/ 24- Carter C/	3	05:36	3	05:14	00:22	0-0	0	0	0	0	0	0.0000
3- Wiggins A/ 10- Zeinstra L/ 14- Land J/ 21- Strande C/ 31- Stoddard L/	3	05:14	4	10:00	05:14	12-12	0	1	1	0	3	1.1029
1- Norman K/ 2- Makalusky R/ 10- Zeinstra L/ 12- Carmody L/ 24- Carter C/	4	10:00	4	08:09	01:51	0-5	-5	1	1	2	0	0.0000
3- Wiggins A/ 11- McGuff K/ 12- Carmody L/ 21- Strande C/ 24- Carter C/	4	08:09	4	07:01	01:08	0-2	-2	0	0	1	0	0.0000
3- Wiggins A/ 11- McGuff K/ 12- Carmody L/ 21- Strande C/ 32- Jaynes S/	4	07:01	4	05:56	01:05	1-0	1	2	0	2	0	0.3472
3- Wiggins A/ 10- Zeinstra L/ 11- McGuff K/ 21- Strande C/ 32- Jaynes S/	4	05:56	4	03:55	02:01	5-10	-5	1	0	0	1	1.2500
3- Wiggins A/ 10- Zeinstra L/ 14- Land J/ 21- Strande C/ 31- Stoddard L/	4	03:55	4	00:00	03:55	10-5	5	5	1	2	4	1.6667





**Butler at Vanderbilt**

11/17/24 Memorial Gymnasium, Nashville  
2024-25 Women's Basketball

**Game Time:** 2:00 PM  
**Game Duration:** 1:45  
**Attendance:** 2,615

**Officials:** Gina Cross, Karen Preato, Timothy Greene

**Vanderbilt**

Lineup	Quarter On	Time On	Quarter Off	Time Off	Time on Court	Score	Score Diff	Reb	Stl	Tov	Ass	PPP
1- Blakes M/ 4- Greene M/ 10- Nwaba J/ 11- Oliver J/ 12- Pierre K/	1	10:00	1	06:47	03:13	2-2	0	2	2	1	0	0.4000
1- Blakes M/ 4- Greene M/ 11- Oliver J/ 13- Pissott J/ 14- Mitchell A/	1	06:47	1	01:10	05:37	11-3	8	3	1	2	2	1.2387
1- Blakes M/ 4- Greene M/ 10- Nwaba J/ 11- Oliver J/ 12- Pierre K/	1	01:10	2	10:00	01:10	4-3	1	0	1	1	1	1.3889
1- Blakes M/ 5- Kapinus L/ 10- Nwaba J/ 12- Pierre K/ 24- Makurat A/	2	10:00	2	07:05	02:55	10-6	4	2	2	0	2	2.0000
1- Blakes M/ 5- Kapinus L/ 10- Nwaba J/ 11- Oliver J/ 12- Pierre K/	2	07:05	2	06:02	01:03	2-2	0	0	0	0	1	2.0000
4- Greene M/ 5- Kapinus L/ 10- Nwaba J/ 11- Oliver J/ 12- Pierre K/	2	06:02	2	04:48	01:14	2-2	0	0	1	3	0	0.5000
1- Blakes M/ 4- Greene M/ 11- Oliver J/ 12- Pierre K/ 13- Pissott J/	2	04:48	2	03:18	01:30	0-2	-2	1	0	1	0	0.0000
1- Blakes M/ 4- Greene M/ 10- Nwaba J/ 11- Oliver J/ 12- Pierre K/	2	03:18	2	03:18	00:00	0-0	0	0	0	0	0	0.0000
1- Blakes M/ 4- Greene M/ 10- Nwaba J/ 11- Oliver J/ 14- Mitchell A/	2	03:18	2	02:58	00:20	0-0	0	0	0	0	0	0.0000
1- Blakes M/ 4- Greene M/ 5- Kapinus L/ 11- Oliver J/ 14- Mitchell A/	2	02:58	3	10:00	02:58	6-0	6	7	3	3	1	0.8197
1- Blakes M/ 4- Greene M/ 10- Nwaba J/ 11- Oliver J/ 12- Pierre K/	3	10:00	3	08:41	01:19	3-0	3	0	2	1	1	1.0417
1- Blakes M/ 5- Kapinus L/ 10- Nwaba J/ 11- Oliver J/ 12- Pierre K/	3	08:41	3	05:57	02:44	5-3	2	3	1	2	1	1.0000
1- Blakes M/ 5- Kapinus L/ 10- Nwaba J/ 11- Oliver J/ 14- Mitchell A/	3	05:57	3	03:40	02:17	6-8	-2	1	0	2	2	1.2295
1- Blakes M/ 5- Kapinus L/ 10- Nwaba J/ 11- Oliver J/ 12- Pierre K/	3	03:40	3	03:11	00:29	0-0	0	0	0	0	0	0.0000
1- Blakes M/ 10- Nwaba J/ 11- Oliver J/ 12- Pierre K/ 13- Pissott J/	3	03:11	3	00:13	02:57	8-5	3	5	0	2	1	1.3889
1- Blakes M/ 10- Nwaba J/ 12- Pierre K/ 13- Pissott J/ 24- Makurat A/	3	00:13	3	00:13	00:00	0-0	0	0	0	0	0	0.0000
5- Kapinus L/ 10- Nwaba J/ 12- Pierre K/ 13- Pissott J/ 24- Makurat A/	3	00:13	4	10:00	00:13	0-0	0	1	0	0	0	0.0000
4- Greene M/ 5- Kapinus L/ 13- Pissott J/ 14- Mitchell A/ 24- Makurat A/	4	10:00	4	07:01	02:59	7-0	7	4	1	2	1	1.4344
1- Blakes M/ 5- Kapinus L/ 12- Pierre K/ 13- Pissott J/ 24- Makurat A/	4	07:01	4	05:56	01:05	0-1	-1	0	1	0	0	0.0000
1- Blakes M/ 5- Kapinus L/ 10- Nwaba J/ 11- Oliver J/ 12- Pierre K/	4	05:56	4	03:55	02:01	10-5	5	2	0	0	4	2.5000
1- Blakes M/ 2- Brown J/ 10- Nwaba J/ 11- Oliver J/ 12- Pierre K/	4	03:55	4	02:31	01:24	3-7	-4	2	0	1	0	1.0417
1- Blakes M/ 2- Brown J/ 10- Nwaba J/ 11- Oliver J/ 30- Wilson T/	4	02:31	4	00:00	02:31	2-3	-1	0	2	0	1	0.5000



**Butler at Vanderbilt**

11/17/24 Memorial Gymnasium, Nashville  
2024-25 Women's Basketball

**Game Time:** 2:00 PM  
**Game Duration:** 1:45  
**Attendance:** 2,615

**Officials:** Gina Cross, Karen Preato, Timothy Greene

**Butler**

Lineup	Time	Score	Score Diff	Pts/Min	Reb	Stl	Tov	Ass	PPP
3- Wiggins A/ 10- Zeinstra L/ 14- Land J/ 21- Strande C/ 31- Stoddard L/	09:09	22-17	5	2.4044	6	2	2	7	1.3033
1- Norman K/ 2- Makalusky R/ 11- McGuff K/ 21- Strande C/ 24- Carter C/	07:41	6-11	-5	0.7809	7	4	8	0	0.4323
3- Wiggins A/ 10- Zeinstra L/ 11- McGuff K/ 21- Strande C/ 32- Jaynes S/	03:07	5-10	-5	1.6043	1	0	0	1	1.0000
2- Makalusky R/ 11- McGuff K/ 12- Carmody L/ 21- Strande C/ 24- Carter C/	02:50	2-5	-3	0.7059	2	1	4	1	0.3333
1- Norman K/ 2- Makalusky R/ 11- McGuff K/ 12- Carmody L/ 24- Carter C/	02:04	1-5	-4	0.4839	1	0	2	0	0.2577
2- Makalusky R/ 3- Wiggins A/ 11- McGuff K/ 12- Carmody L/ 32- Jaynes S/	01:51	0-2	-2	0.0000	3	0	2	0	0.0000
1- Norman K/ 2- Makalusky R/ 10- Zeinstra L/ 12- Carmody L/ 24- Carter C/	01:51	0-5	-5	0.0000	1	1	2	0	0.0000
1- Norman K/ 11- McGuff K/ 14- Land J/ 21- Strande C/ 32- Jaynes S/	01:49	6-3	3	3.3028	1	0	0	2	3.0000
2- Makalusky R/ 10- Zeinstra L/ 12- Carmody L/ 21- Strande C/ 24- Carter C/	01:38	4-4	0	2.4490	0	1	1	0	0.9259
2- Makalusky R/ 10- Zeinstra L/ 11- McGuff K/ 12- Carmody L/ 32- Jaynes S/	01:27	0-2	-2	0.0000	1	1	1	0	0.0000
3- Wiggins A/ 12- Carmody L/ 14- Land J/ 21- Strande C/ 32- Jaynes S/	01:18	2-4	-2	1.5385	0	1	1	0	0.6667
3- Wiggins A/ 11- McGuff K/ 14- Land J/ 21- Strande C/ 32- Jaynes S/	01:10	3-4	-1	2.5714	0	1	1	1	1.5000
3- Wiggins A/ 11- McGuff K/ 12- Carmody L/ 21- Strande C/ 24- Carter C/	01:08	0-2	-2	0.0000	0	0	1	0	0.0000
1- Norman K/ 2- Makalusky R/ 11- McGuff K/ 21- Strande C/ 32- Jaynes S/	01:06	0-7	-7	0.0000	0	0	2	0	0.0000
3- Wiggins A/ 11- McGuff K/ 12- Carmody L/ 21- Strande C/ 32- Jaynes S/	01:05	1-0	1	0.9231	2	0	2	0	0.3472
3- Wiggins A/ 11- McGuff K/ 12- Carmody L/ 14- Land J/ 32- Jaynes S/	00:24	0-0	0	0.0000	0	0	1	0	0.0000
3- Wiggins A/ 10- Zeinstra L/ 14- Land J/ 21- Strande C/ 24- Carter C/	00:22	0-0	0	0.0000	0	0	0	0	0.0000



**Butler at Vanderbilt**

11/17/24 Memorial Gymnasium, Nashville  
2024-25 Women's Basketball

**Game Time:** 2:00 PM  
**Game Duration:** 1:45  
**Attendance:** 2,615

**Officials:** Glna Cross, Karen Preato, Timothy Greene

**Vanderbilt**

Lineup	Time	Score	Score Diff	Pts/Min	Reb	Stl	Tov	Ass	PPP
1- Blakes M/ 5- Kapinus L/ 10- Nwaba J/ 11- Oliver J/ 12- Pierre K/	06:17	17-10	7	2.7056	5	1	2	6	1.5455
1- Blakes M/ 4- Greene M/ 10- Nwaba J/ 11- Oliver J/ 12- Pierre K/	05:42	9-5	4	1.5789	2	5	3	2	0.8364
1- Blakes M/ 4- Greene M/ 11- Oliver J/ 13- Pissott J/ 14- Mitchell A/	05:37	11-3	8	1.9585	3	1	2	2	1.2387
4- Greene M/ 5- Kapinus L/ 13- Pissott J/ 14- Mitchell A/ 24- Makurat A/	02:59	7-0	7	2.3464	4	1	2	1	1.4344
1- Blakes M/ 4- Greene M/ 5- Kapinus L/ 11- Oliver J/ 14- Mitchell A/	02:58	6-0	6	2.0225	7	3	3	1	0.8197
1- Blakes M/ 10- Nwaba J/ 11- Oliver J/ 12- Pierre K/ 13- Pissott J/	02:57	8-5	3	2.7027	5	0	2	1	1.3889
1- Blakes M/ 5- Kapinus L/ 10- Nwaba J/ 12- Pierre K/ 24- Makurat A/	02:55	10-6	4	3.4286	2	2	0	2	2.0000
1- Blakes M/ 2- Brown J/ 10- Nwaba J/ 11- Oliver J/ 30- Wilson T/	02:31	2-3	-1	0.7947	0	2	0	1	0.5000
1- Blakes M/ 5- Kapinus L/ 10- Nwaba J/ 11- Oliver J/ 14- Mitchell A/	02:17	6-8	-2	2.6277	1	0	2	2	1.2295
1- Blakes M/ 4- Greene M/ 11- Oliver J/ 12- Pierre K/ 13- Pissott J/	01:30	0-2	-2	0.0000	1	0	1	0	0.0000
1- Blakes M/ 2- Brown J/ 10- Nwaba J/ 11- Oliver J/ 12- Pierre K/	01:24	3-7	-4	2.1429	2	0	1	0	1.0417
4- Greene M/ 5- Kapinus L/ 10- Nwaba J/ 11- Oliver J/ 12- Pierre K/	01:14	2-2	0	1.6216	0	1	3	0	0.5000
1- Blakes M/ 5- Kapinus L/ 12- Pierre K/ 13- Pissott J/ 24- Makurat A/	01:05	0-1	-1	0.0000	0	1	0	0	0.0000
1- Blakes M/ 4- Greene M/ 10- Nwaba J/ 11- Oliver J/ 14- Mitchell A/	00:20	0-0	0	0.0000	0	0	0	0	0.0000
5- Kapinus L/ 10- Nwaba J/ 12- Pierre K/ 13- Pissott J/ 24- Makurat A/	00:13	0-0	0	0.0000	1	0	0	0	0.0000
1- Blakes M/ 10- Nwaba J/ 12- Pierre K/ 13- Pissott J/ 24- Makurat A/	00:00	0-0	0	NaN	0	0	0	0	0.0000