

GAME 20 - Missouri

|             |   |
|-------------|---|
| Teams       | Vanderbilt (5-15, 0-7 SEC) vs. Missouri (8-13, 0-8 SEC)                   |
| Date • Time | Feb. 3, 2024 • 2:30 p.m. CT   |
| Site        | Memorial Gymnasium • Nashville, Tenn.                                     |
| Broadcast   | SEC Network<br><i>Mike Morgan and Mark Wise; producer, Doug Stanton</i>   |
| Radio       | 102.5 The Game   VUCommodores App<br><i>Kevin Ingram and Tim Thompson</i> |

AT A GLANCE

- Vanderbilt returns to Memorial Gymnasium for its lone back-to-back home games of the SEC season.
- The Commodores meet Mizzou for the 17th time with the Tigers holding a 9-7 edge in the series. The Dores, however, are 6-2 at home against Mizzou.

LAST TIME OUT

- Vanderbilt was held to a season-low 26.8% (15-of-56) from the floor at Auburn.
- Three Dores finished in double figures, led by Ven-Allen Lubin who scored 17 and grabbed 12 rebounds. Evan Taylor added 14 and Tyrin Lawrence 12 in the loss.

VEN-ALLEN DOUBLE-DOUBLE

- Ven-Allen Lubin notched his first SEC double-double at Auburn with 17 points and 12 rebounds.
- The 17 points and 12 boards both marked a Vandy high for Lubin who transferred in from Notre Dame.
- Lubin secured the double-double in the first half alone, going for 10 and 10 in the first 20.
- The sophomore also recorded a season-high three blocks against the Tigers.

LAWRENCE LAST 10

- After missing the first four games of the season with an injury, Tyrin Lawrence has scored in double figures in 10-straight games, including three 20-point performances.
- Lawrence is averaging 15.3 points, 5.7 rebounds and 1.7 steals in the last 10 games.
- The senior is leading the Dores in SEC play at 15.6 points per game while also grabbing a team-leading 5.4 rebounds per contest in league action.

MANJON MAKES IT HAPPEN

- Ezra Manjon continues to be the engine for the Dores, averaging a team-leading 14.6 points and 3.3 assists per outing. He ranks 16th in the SEC in scoring and 14th in assists.
- He has scored in double figures in 15-of-18 contests he's played this season, including 10 games of 15-plus points.
- Averaging 13.0 points and 3.6 assists in his career, Manjon is 1-of-13 active players with those career numbers. He is also 1-of-13 active players with 30 career games of 15+ points and 4+ assists.
- The fifth-year has also excelled at the free throw line, hitting at 84.3 percent. Manjon ranks ninth in the SEC at the charity stripe.
- Manjon has scored in double figures 92 times in his career. He is one of just three active SEC players with 90+ career games in double figures (Antonio Reeves, UK & Johni Broome, AU).

TYRIN TAKING IT AWAY

- Tyrin Lawrence ranks sixth in the SEC, averaging 1.81 steals per game.
- Lawrence has recorded a steal in 14-of-16 contests played this season, including nine games with multiple steals.
- The senior had a steal in 12-straight contests and has notched multiple in eight of those games. The 12-game steal streak tied for the third-longest by a Vanderbilt player since 2005-06.

MOST CONSECUTIVE GAMES WITH A STEAL (Since 2005-06)

- 14 - Jermaine Beal ('06-'07)
- 13 - Scotty Pippen Jr. ('21)
- 12 - Tyrin Lawrence ('23-'24)
- 12 - Wade Baldwin ('15)

JRT LEADS THE ROOKS

- Rivera-Torres has scored in double figures four times during SEC play this season and averages 10.0 points per game in league action.
- Averaging 4.1 rebounds per game in SEC play, Rivera-Torres is the only SEC freshman producing over 10.0 points and 4.0 rebounds per contest.
- The rookie has scored in double figures seven times in total this season.

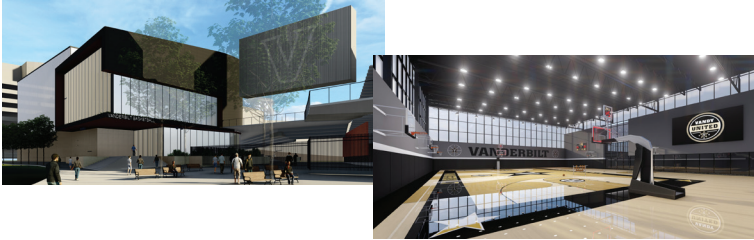
2023-24 SCHEDULE (5-15, 0-7 SEC)

|         |                        |                    |               |           |
|---------|------------------------|--------------------|---------------|-----------|
| Nov. 7  | Presbyterian           | Memorial Gymnasium | SEC Network + | L, 62-68  |
| Nov. 10 | USC Upstate            | Memorial Gymnasium | SEC Network + | W, 74-67  |
| Nov. 14 | UNCG                   | Memorial Gymnasium | SEC Network + | W, 74-70  |
| Nov. 17 | Central Arkansas       | Memorial Gymnasium | SEC Network + | W, 75-71  |
| Nov. 23 | vs. NC State ^         | Las Vegas, Nev.    | ESPN2         | L, 78-84  |
| Nov. 24 | vs. Arizona State^     | Las Vegas, Nev.    | ESPN2         | L, 67-82  |
| Nov. 29 | Boston College \$      | Memorial Gymnasium | SEC Network   | L, 62-80  |
| Dec. 2  | Alabama A&M            | Memorial Gymnasium | SEC Network + | W, 78-59  |
| Dec. 6  | San Francisco          | Memorial Gymnasium | SEC Network + | L, 60-73  |
| Dec. 16 | vs. Texas Tech #       | Fort Worth, Texas  | ESPN+         | L, 54-76  |
| Dec. 19 | Western Carolina       | Memorial Gymnasium | SEC Network   | L, 62-63  |
| Dec. 23 | at 23 Memphis          | Memphis, Tenn.     | CBS           | L, 75-77  |
| Dec. 30 | Dartmouth              | Memorial Gymnasium | SEC Network + | W, 69-53  |
| Jan. 6  | Alabama *              | Memorial Gymnasium | SEC Network   | L, 75-78  |
| Jan. 9  | at LSU *               | Baton Rouge, La.   | SEC Network   | L, 69-77  |
| Jan. 13 | at RV/23 Ole Miss *    | Oxford, Miss.      | SEC Network   | L, 56-69  |
| Jan. 17 | 13/11 Auburn *         | Memorial Gymnasium | SEC Network   | L, 65-80  |
| Jan. 20 | at Mississippi State * | Starkville, Miss.  | SEC Network   | L, 55-68  |
| Jan. 27 | 5 Tennessee *          | Memorial Gymnasium | SEC Network   | L, 62-75  |
| Jan. 31 | at 16 Auburn *         | Auburn, Ala.       | ESPN2         | L, 54-81  |
| Feb. 3  | Missouri *             | Memorial Gymnasium | SEC Network   | 2:30 p.m. |
| Feb. 6  | Kentucky *             | Memorial Gymnasium | SEC Network   | 7:30 p.m. |
| Feb. 10 | at South Carolina *    | Columbia, S.C.     | SEC Network   | Noon      |
| Feb. 13 | Texas A&M *            | Memorial Gymnasium | ESPN2/U       | 6 p.m.    |
| Feb. 17 | at Tennessee *         | Knoxville, Tenn.   | SEC Network   | 5 p.m.    |
| Feb. 21 | Georgia *              | Memorial Gymnasium | SEC Network   | 7:30 p.m. |
| Feb. 24 | at Florida *           | Gainesville, Fla.  | SEC Network   | Noon      |
| Feb. 27 | at Arkansas *          | Fayetteville, Ark. | SEC Network   | 8 p.m.    |
| March 2 | LSU *                  | Memorial Gymnasium | SEC Network   | Noon      |
| March 6 | at Kentucky *          | Lexington, Ky.     | SEC Network   | 8 p.m.    |
| March 9 | Florida *              | Memorial Gymnasium | SEC Network   | 3:30 p.m. |

^ Vegas Showdown   \$ ACC/SEC Challenge   # USLBM Coast to Coast Challenge   \* SEC Game

VANDERBILT'S INVESTMENT IN BASKETBALL

- Vanderbilt is in the midst of a **\$300 million** fundraising campaign for athletics called **Vandy United**.
- Construction is underway on a new men's and women's basketball operations center and practice facility which includes offices, practice courts, weight room, and locker rooms.
- Vanderbilt also built new game day locker rooms for men's and women's basketball, which were completed in January of 2022.
- The playing surface at Memorial Gymnasium was completely replaced - completed in October of 2022.
- A new center-hung videoboard was installed in Memorial prior to the 2023-24 season and eight new videoboarders were added to Memorial prior to the start of the 2021-22 season.



| Series History vs. Mizzou   |              |  |       |
|---|--------------|--|-------|
| Vanderbilt's Record in the Series   |              | 7-9   6-2 in Memorial Gymnasium                                |       |
| Stackhouse's Record vs. Opponent  |              | 1-2  |       |
| Series Streak   |              | L1   |       |
| First Meeting   |              | L, 72-78 (OT)   Dec. 8, 1958                                   |       |
| Most Recent Meeting   |              | L, 82-85   Jan. 7, 2023  |       |
| Vanderbilt's Last Win   |              | W, 70-62   Feb. 8, 2022  |       |
| Recent Meetings   |              |  |       |
| Location  | Date         | Result   | Score |
| Columbia, Mo.   | Jan. 7, 2023 | L  | 82-85 |
| Nashville, Tenn.  | Feb. 8, 2022 | W  | 70-62 |
| Series Notes  |              |  |       |
| <div>• Each of the past three meetings in the series have been decided by single digits.</div> <div>• Four Dore scores in double figures at Mizzou last year. Ezra Manjon scored 12 with 7 assists.</div> |              |  |       |
| During the 2023-24 Season   |              |  |       |
| Location  |              | Most Individual Points - 25, Evan Taylor vs. Arizona State     |       |
| Home  | 5-7          | Most Individual Rebounds - 11, Carter Lang vs. Presbyterian    |       |
| Road  | 0-5          | 11, Colin Smith vs. UNGC                                       |       |
| Neutral   | 0-3          | 11, Colin Smith vs. Central Ark.                               |       |
| Specialty   |              | Most Individual Assists - 7, Ezra Manjon vs Alabama A&M        |       |
| Overtime  | 0-0          | Most Individual Blocks - 3, Ven-Allen Lubin at Aub. (Jan. 31)  |       |
| AP ranked opp.  | 0-4          | Biggest Lead - 21 vs. Alabama A&M (Dec. 2), 2:32 of 2nd        |       |
| At the Half   |              | Biggest Deficit - 31 at Auburn (Jan. 31), 3:02 of 2nd          |       |
| Leading   | 4-3          | Biggest Lead in a Loss - 10 vs. Presbyterian (Nov. 7)          |       |
| Trailing  | 1-12         | Biggest Deficit in a Win - 12 vs. USC Upstate (Nov. 10)        |       |
| Tied  | 0-0          | Biggest Halftime Lead - 12 vs. UNGC (Nov. 14)                  |       |
| Vandy Scoring   |              | Biggest Halftime Deficit - 21 vs. Boston College (Nov. 29)     |       |
| 75+ points  | 2-3          | Biggest Halftime Lead Blown - 5 vs. Tennessee (Jan. 27)        |       |
| Fewer than 75   | 2-12         | Biggest Halftime Deficit Erased - 4 vs. USC Upstate (Nov. 11)  |       |
| Rebounding  |              | Most Points: 1st Half - 41, 2x last vs. Central Ark. (Nov. 17) |       |
| Vandy more  | 3-4          | Most Points: 2nd Half - 47 vs. USC Upstate (Nov. 11)           |       |
| Opponent more   | 1-11         | Fewest Points: 1st Half - 27 vs. USC Upstate (Nov. 11)         |       |
| Tied  | 1-0          | 27 at Auburn (Jan. 31)   |       |
| Vandy Shooting  |              | Fewest Points: 2nd Half - 27 vs. Tennessee (Jan. 27)           |       |
| 50+ %   | 0-0          | Most Points Allowed: 1st Half - 44, 2x last vs. BC (Nov. 29)   |       |
| 40-49%  | 4-6          | Most Points Allowed: 2nd Half - 45 vs. Tennessee (Jan. 27)     |       |
| Under 40%   | 1-9          | Fewest Points Allowed: 1st Half - 24 vs. Presbyterian (Nov. 7) |       |
| 35+ % from 3  | 2-2          | Fewest Points Allowed: 2nd Half - 29, vs. Texas Tech (Dec. 16) |       |
| Opponent Shooting   |              | Biggest Margin of Victory - 19 vs. Alabama A&M (Dec. 2)        |       |
| 50+ %   | 0-4          | Biggest Margin of Defeat - 27 at Auburn (Jan. 31)              |       |
| 40-49%  | 3-9          |  |       |
| Under 40%   | 2-2          |  |       |
| 35+ % from 3  | 2-11         |  |       |
| Turnovers   |              |  |       |
| Vandy fewer than opp.   | 3-7          |  |       |

| NOTES  |              |        |              |        |              |        |                |
|--|--------------|--------|--------------|--------|--------------|--------|----------------|
| TAYLOR FINDING RANGE   |              |        |              |        |              |        |                |
| • Evan Taylor has knocked down multiple threes in three-consecutive games marking the first such stretch of the season for the grad transfer.  |              |        |              |        |              |        |                |
| • Across the three games, Taylor is shooting 44.4% (8-of-18) from deep, flashing a return to form for the 40% career shooter.  |              |        |              |        |              |        |                |
| • Taylor has scored in double figures in two of the past three games.  |              |        |              |        |              |        |                |
| LUBIN DOWN LOW   |              |        |              |        |              |        |                |
| • Newcomer Ven-Allen Lubin has provided the Dore a needed presence down low since his return from injury to open the season.   |              |        |              |        |              |        |                |
| • Lubin is averaging 10.1 points and 5.6 rebounds as a Dore and has scored in double figures in seven games.   |              |        |              |        |              |        |                |
| • Lubin went for a double-double, his first at the collegiate level, in the win over Alabama A&M with 14 points and 10 rebounds.   |              |        |              |        |              |        |                |
| • After battling an injury against Memphis, Dartmouth and Alabama, Lubin returned to double-figure scoring with 11 points on 5-of-7 shooting at LSU.   |              |        |              |        |              |        |                |
| • Lubin notched his second double-double with his 17-point, 12-rebound performance at Auburn.  |              |        |              |        |              |        |                |
| INJURY BUG   |              |        |              |        |              |        |                |
| • Vanderbilt has battled the injury bug, playing just two games with a fully healthy roster.   |              |        |              |        |              |        |                |
| • Four of the Dore's presumed starters entering the season have missed a game due to injury.   |              |        |              |        |              |        |                |
| • Second team All-SEC preseason selection Tyrin Lawrence and transfer Ven-Allen Lubin missed the first four games of the season. Lubin missed Tuesday's contest against Western Carolina.  |              |        |              |        |              |        |                |
| • Fifth-year point guard Ezra Manjon missed both games of the Vegas Showdown while Colin Smith missed three contests prior to returning vs. San Francisco.   |              |        |              |        |              |        |                |
| • Smith then suffered a season-ending Achilles injury in the first half against Texas Tech.  |              |        |              |        |              |        |                |
| • In total, the Dore's expected starting five of Lawrence, Smith, Lubin, Manjon and Taylor played a grand total of 12:39 seconds together this season. They started just one game together (Texas Tech), playing 4:08 before Smith's injury. |              |        |              |        |              |        |                |
| • Most recently, guard Isaiah West, who had worked himself into the starting lineup, four games from December into mid-January.  |              |        |              |        |              |        |                |
| STARTING 12  |              |        |              |        |              |        |                |
| • With the injuries throughout the season, Vandy has started 12 different lineups this season.   |              |        |              |        |              |        |                |
| • The Dore's are 1-of-7 teams in the country to start 12 lineups this season.  |              |        |              |        |              |        |                |
| GR33K FR3AK  |              |        |              |        |              |        |                |
| • Tasos Kamateros scored his 1,000th career point at the collegiate level in the win over USC Upstate (Nov. 10).   |              |        |              |        |              |        |                |
| • It was part of an electric shooting performance for the Athens, Greece, native who produced a perfect second half to score 17 of his game-high 21 points.  |              |        |              |        |              |        |                |
| YOUNG DORES  |              |        |              |        |              |        |                |
| • Vandy is the 10th youngest program by average age heading into the 2023-24 season and the fifth youngest in the major conferences (Marquette, Kentucky, Arizona, UCLA).  |              |        |              |        |              |        |                |
| • The Commodores average 20.12 years old.  |              |        |              |        |              |        |                |
| • 12 of VU's 17 players are underclassmen.   |              |        |              |        |              |        |                |
| LANG'S FRESHMAN FEAT   |              |        |              |        |              |        |                |
| STUDENT-ATHLETE  | 10-19 POINTS |        | 20-29 POINTS |        | 30-39 POINTS |        | DOUBLE-DOUBLES |
|  | 2023-24      | CAREER | 2023-24      | CAREER | 2023-24      | CAREER | 2023-24 CAREER |
| #0 Tyrin Lawrence  | 9            | 27     | 4            | 11     | 0            | 0      | 0 1            |
| #1 Colin Smith   | 2            | 7      | 0            | 0      | 0            | 0      | 2 2            |
| #3 Paul Lewis  | 0            | 2      | 0            | 0      | 0            | 0      | 0 0            |
| #5 Ezra Manjon   | 12           | 73     | 3            | 19     | 0            | 0      | 0 0            |
| #21 Tasos Kamateros  | 1            | 37     | 1            | 14     | 0            | 0      | 0 0            |
| #23 Jason Rivera-Torres  | 7            | 7      | 1            | 1      | 0            | 0      | 0 0            |
| #2 Ven-Allen Lubin   | 8            | 16     | 0            | 0      | 0            | 0      | 1 1            |
| #12 Evan Taylor  | 6            | 56     | 1            | 14     | 0            | 0      | 0 7            |

|    |   |   |  |  |
|----|---|---|--|--|
| 0  |     | <b>TYRIN LAWRENCE • Senior • Guard • 6-4 • 200 • Monticello, Ga. • Christian Sunrise Academy (Kan.) • Pronounced TY-rin</b><br>• Season-high 22 pts, 8 reb vs. Dartmouth (12/30)<br>• Back-to-back 20-point games vs. Dartmouth & Alabama<br>• 24 games in double figures in 2022-23                                  | <b>PTS</b> 25 vs. Yale (3/14/23)<br><b>REB</b> 10 vs. Ole Miss (2/4/23)<br><b>AST</b> 4 vs. Mississippi Valley State (12/13/20)              | <b>GP-GS</b> MIN/G FG% 3FG% FT% R/G A/G STL BLK PTS/G<br><b>23-24</b> 16-16 30.9 .387 .271 .717 5.2 1.8 29 7 14.2<br><b>CAREER</b> 93-68 23.0 .453 .290 .726 3.6 1.3 88 16 9.1     |
|    |   |   |  |  |
| 1  |    | <b>COLIN SMITH • Sophomore • Forward • 6-8 • 220 • Dallas, Texas • Compass Prep (Ariz.)</b><br>• Suffered season-ending Achilles injury (Dec. 16)<br>• Back-to-back dbl-dbls vs. UNCG & Central Arkansas<br>• Career-best 15 pts (5-of-6 - 3's) vs. Texas A&M in SECT   | <b>PTS</b> 15 vs. Texas A&M (3/11/23)<br><b>REB</b> 11, 2x last vs. Central Ark. (11/17/23)<br><b>AST</b> 2, 2x, last at Tennessee (1/10/23) | <b>GP-GS</b> MIN/G FG% 3FG% FT% R/G A/G STL BLK PTS/G<br><b>23-24</b> 7-6 25.5 .354 .273 .538 6.6 0.3 7 2 7.1<br><b>CAREER</b> 43-22 18.2 .380 .349 .655 3.2 0.5 12 5 5.1          |
|    |   |   |  |  |
| 2  |    | <b>VEN-ALLEN LUBIN • Sophomore • Forward • 6-8 • 230 • Orlando, Fla. • Orlando Christian Prep / Notre Dame</b><br>• First dbl-dbl vs. Alabama A&M on Dec. 2 (14 pts, 10 reb)<br>• Played freshman campaign at Notre Dame<br>• Led the Irish with 23 blocks in 2022-23   | <b>PTS</b> 19 at Wake Forest (2/25/23)<br><b>REB</b> 13 vs. St. Bonaventure (11/25/22)<br><b>AST</b> 2 vs. Bowling Green (11/22/22)          | <b>GP-GS</b> MIN/G FG% 3FG% FT% R/G A/G STL BLK PTS/G<br><b>23-24</b> 14-14 25.6 .486 .333 .805 5.6 0.5 6 16 10.1<br><b>CAREER</b> 42-21 20.2 .538 .241 .750 4.8 0.4 15 39 7.5     |
|    |   |   |  |  |
| 3  |    | <b>PAUL LEWIS • Sophomore • Guard • 6-2 • 175 • Woodbridge, Va. • Bishop O'Connell</b><br>• Three-star prospect by ESPN, 247 Sports and Rivals<br>• Nominated for 2022 McDonald's All-American Game<br>• Poured in 11 on 4-of-5 shooting at LSU in 2023   | <b>PTS</b> 11 vs. LSU (3/10/23)<br><b>REB</b> 4 vs. NC State (11/23/23)<br><b>AST</b> 3 vs. Presbyterian (11/7/23)                           | <b>GP-GS</b> MIN/G FG% 3FG% FT% R/G A/G STL BLK PTS/G<br><b>23-24</b> 19-3 16.4 .306 .217 .615 1.1 1.6 5 1 3.7<br><b>CAREER</b> 44-8 12.8 .354 .298 .636 1.0 1.2 16 1 3.3          |
|    |   |   |  |  |
| 4  |    | <b>ISAIAH WEST • Freshman • Guard • 6-2 • 190 • Springfield, Tenn. • Goodpasture Christian</b><br>• First double-figure game (12) vs. Central Ark. (11/17)<br>• Led Goodpasture to 32-2 record & state title as senior<br>• Two-time state champ, led 2021 title game with 19 pts                                     | <b>PTS</b> 12 vs. Central Arkansas (11/17/23)<br><b>REB</b> 3 vs. Arizona State (11/24/23)<br><b>AST</b> 2 vs. Arizona State (11/24/23)      | <b>GP-GS</b> MIN/G FG% 3FG% FT% R/G A/G STL BLK PTS/G<br><b>23-24</b> 13-4 13.0 .486 .267 .300 1.1 0.6 3 1 3.2<br><b>CAREER</b> 13-4 13.0 .486 .267 .300 1.1 0.6 3 1 3.2           |
|    |   |   |  |  |
| 5  |    | <b>EZRA MANJON • Fifth Year • Guard • 6-0 • 170 • Antioch, Calif. • Heritage HS / UC Davis • Pronounced mon-YOWN</b><br>• 10 games of 15+ points this season<br>• Led SEC with 5.0 Ast/TO in conference play in '22-'23<br>• 92 career games scoring in double figures  | <b>PTS</b> 27 at Oregon State (12/14/21)<br><b>REB</b> 8, 2x, last at South Carolina (2/14/23)<br><b>AST</b> 9 at Temple (11/15/22)          | <b>GP-GS</b> MIN/G FG% 3FG% FT% R/G A/G STL BLK PTS/G<br><b>23-24</b> 18-18 30.8 .447 .321 .843 3.2 3.3 19 3 14.6<br><b>CAREER</b> 129-117 31.1 .449 .277 .781 3.0 3.6 116 27 13.0 |
|    |   |   |  |  |
| 10 |   | <b>JORDAN WILLIAMS • Sophomore • Guard • 6-2 • 205 • Houston, Texas • Second Baptist / Texas A&amp;M</b><br>• 5 pts, 3rebs, 2 blks at No. 23 Memphis (12/23)<br>• Redshirted as a freshman at Texas A&M in 2022-23<br>• TAPPS Class 5A Player of the Year in 2022   | <b>PTS</b> 5, 2x last vs. Dartmouth (12/30/23)<br><b>REB</b> 3 at Memphis (12/23/23)<br><b>AST</b> 3 vs. NC State (11/23/23)                 | <b>GP-GS</b> MIN/G FG% 3FG% FT% R/G A/G STL BLK PTS/G<br><b>23-24</b> 16-7 10.9 .300 .217 .500 1.2 0.8 5 3 1.6<br><b>CAREER</b> 16-7 10.9 .300 .217 .500 1.2 0.8 5 3 1.6           |
|    |   |   |  |  |
| 12 |  | <b>EVAN TAYLOR • Graduate • Guard/Forward • 6-6 • 205 • Glen Ellyn, Ill. • Glenbard West / Lehigh</b><br>• Season-best 25 pts vs. Arizona State (11/24)<br>• 1,186 pts, 587 rebs, 122 ast, 65 stl, 59 blk at Lehigh<br>• Two-time All-Patriot League selection ('22, '23)   | <b>PTS</b> 26, 2x, last at Navy (1/8/23)<br><b>REB</b> 15 at Lafayette (2/27/23)<br><b>AST</b> 4, 3x, last vs. Colgate (1/4/22)              | <b>GP-GS</b> MIN/G FG% 3FG% FT% R/G A/G STL BLK PTS/G<br><b>23-24</b> 20-14 23.2 .348 .304 .818 3.7 0.3 13 5 8.2<br><b>CAREER</b> 125-102 27.5 .428 .386 .758 5.3 1.0 78 64 10.8   |
|    |   |   |  |  |
| 13 |  | <b>MALIK PRESLEY • Freshman • Guard/Forward • 6-6 • 200 • San Marcos, Texas • San Marcos</b><br>• Four-star recruit according to ESPN, three-star at Rivals & 247<br>• 2023 McDonald's All-American Game nominee<br>• Averaged 20.1 pts, 9.3 reb, 4.0 ast, 1.7 stl as a senior in HS                                  | <b>PTS</b> 11 vs. Auburn (1/17/24)<br><b>REB</b> 5 vs. Texas Tech (12/16/23)<br><b>STL</b> 3 vs. Texas Tech (12/16/23)                       | <b>GP-GS</b> MIN/G FG% 3FG% FT% R/G A/G STL BLK PTS/G<br><b>23-24</b> 16-2 10.5 .389 .200 .474 1.6 0.5 6 0 1.5<br><b>CAREER</b> 16-2 10.5 .389 .200 .474 1.6 0.5 6 0 1.5           |
|    |   |   |  |  |
| 21 |  | <b>TASOS KAMATEROS • Graduate • Forward • 6-8 • 240 • Athens, Greece • 4th Public HS / South Dakota • TAH-sos kom-uh-TER-os</b><br>• 989 pts, 497 reb, 140 ast in 100 games at South Dakota<br>• Scored 1,000th point in win over USC Upstate<br>• Scored 21 on 7-of-8 FG & 4-of-5 3PT vs. USC Upstate                | <b>PTS</b> 24, 2x, last vs. Kansas City (2/25/23)<br><b>REB</b> 16 at San Diego St. (2/5/21)<br><b>AST</b> 8 vs. Omaha (1/15/22)             | <b>GP-GS</b> MIN/G FG% 3FG% FT% R/G A/G STL BLK PTS/G<br><b>23-24</b> 20-5 17.0 .400 .343 .733 2.2 0.2 5 4 4.9<br><b>CAREER</b> 120-85 22.3 .465 .375 .809 4.5 1.2 30 34 9.1       |
|    |   |   |  |  |
| 23 |  | <b>JASON RIVERA-TORRES • Freshman • Guard/Forward • 6-6 • 180 • Bronx, N.Y. • John Marshall (Va.)</b><br>• Career-high 20 points in SEC opener vs. Alabama (1/6)<br>• Four-star recruit by ESPN and 247<br>• Starred as Nick Mendez in "Swagger" on AppleTV   | <b>PTS</b> 20 vs. Alabama (1/6/24)<br><b>REB</b> 8 vs. Alabama A&M (12/2/23)<br><b>AST</b> 3 vs. Alabama A&M (12/2/23)                       | <b>GP-GS</b> MIN/G FG% 3FG% FT% R/G A/G STL BLK PTS/G<br><b>23-24</b> 20-2 18.1 .380 .313 .757 3.5 0.6 22 5 8.2<br><b>CAREER</b> 20-2 18.1 .380 .313 .757 3.5 0.6 22 5 8.2         |
|    |   |   |  |  |
| 24 |  | <b>JaQUALON "JQ" ROBERTS • Freshman • Forward • 6-8 • 220 • Bloomington, Ind. • Bloomington North • Pronounced juh-KWAY-lin</b><br>• Scored 8 in first career start at Ole Miss (career-high)<br>• Four-star recruit by ESPN and three-star by 247 & Rivals<br>• 14.4 pts, 9.1 reb per game on 52% shooting as junior | <b>PTS</b> 8 at Ole Miss (1/13/24)<br><b>REB</b> 6 at LSU (1/9/24)<br><b>BLK</b> 2 vs. UNCG (11/14/23)                                       | <b>GP-GS</b> MIN/G FG% 3FG% FT% R/G A/G STL BLK PTS/G<br><b>23-24</b> 15-2 11.2 .214 .133 .400 2.3 0.4 2 6 1.2<br><b>CAREER</b> 15-2 11.2 .214 .133 .400 2.3 0.4 2 6 1.2           |
|    |   |   |  |  |
| 35 |  | <b>CARTER LANG • Freshman • Forward • 6-9 • 235 • Charlottesville, Va. • St. Anne's Belfield</b><br>• Grabbed 11 rebounds in collegiate debut (Nov. 7)<br>• Averaged 18.3 pts, 14.9 reb, 1.5 blk in high school<br>• Four-star recruit on ESPN, three-star on Rivals & 247  | <b>PTS</b> 8 vs. Boston College (11/29/23)<br><b>REB</b> 11 vs. Presbyterian (11/7/23)<br><b>BLK</b> 2 at Memphis (12/23/23)                 | <b>GP-GS</b> MIN/G FG% 3FG% FT% R/G A/G STL BLK PTS/G<br><b>23-24</b> 17-7 13.3 .500 .000 .500 4.0 0.4 5 7 2.5<br><b>CAREER</b> 17-7 13.3 .500 .000 .500 4.0 0.4 5 7 2.5           |
|    |   |   |  |  |

| 2023-24 ROSTER |                       |                       |               |         |       |     |                      |                                  |
|----------------|-----------------------|-----------------------|---------------|---------|-------|-----|----------------------|----------------------------------|
| NO.            | NAME                  | PRONUNCIATION         | POS.          | CLASS   | HT.   | WT. | HOMETOWN             | PREVIOUS SCHOOL                  |
| 0              | Tyrin Lawrence        | TY-rin                | Guard         | Sr.     | 6’4”  | 200 | Monticello, Ga.      | Sunrise Christian Academy (Kan.) |
| 1              | Colin Smith           |                       | Forward       | So.     | 6’8”  | 220 | Dallas, Texas        | Compass Prep (Ariz.)             |
| 2              | Ven-Allen Lubin       | LEW-bin               | Forward       | So.     | 6’8”  | 230 | Orlando, Fla.        | University of Notre Dame         |
| 3              | Paul Lewis            |                       | Guard         | So.     | 6’2”  | 175 | Woodbridge, Va.      | Bishop O’Connell                 |
| 4              | Isaiah West           |                       | Guard         | Fr.     | 6’2”  | 190 | Springfield, Tenn.   | Goodpasture Christian            |
| 5              | Ezra Manjon           | mon-YOWN              | Guard         | 5th-Yr. | 6’0”  | 170 | Antioch, Calif.      | UC Davis                         |
| 10             | Jordan Williams       |                       | Guard         | So.     | 6’2”  | 205 | Houston, Texas       | Texas A&M                        |
| 12             | Evan Taylor           |                       | Guard/Forward | Grad.   | 6’6”  | 205 | Glen Ellyn, Ill.     | Lehigh University                |
| 13             | Malik Presley         |                       | Guard/Forward | Fr.     | 6’6”  | 200 | San Marcos, Texas    | San Marcos                       |
| 15             | Coleson Messer        |                       | Guard         | Fr.     | 6’5”  | 210 | Dallas, Texas        | Highland Park                    |
| 21             | Tasos Kamateros       | TAH-sos kom-uh-TER-os | Forward       | Grad.   | 6’8”  | 240 | Athens, Greece       | University of South Dakota       |
| 22             | Graham Calton         | CALL-tin              | Guard         | Jr.     | 6’5”  | 210 | Charlotte, N.C.      | Charlotte Latin School           |
| 23             | Jason Rivera-Torres   |                       | Guard/Forward | Fr.     | 6’6”  | 180 | Bronx, N.Y.          | John Marshall (Va.)              |
| 24             | JaQualon “JQ” Roberts | juh-KWAY-lin          | Forward       | Fr.     | 6’8”  | 220 | Bloomington, Ind.    | Bloomington HS North             |
| 25             | Miles Keffe           | KEEF                  | Guard         | So.     | 6’5”  | 200 | Novato, Calif.       | Southern California Academy      |
| 34             | Lee Dort              |                       | Forward       | So.     | 6’10” | 245 | McKinney, Texas      | Greenhill School                 |
| 35             | Carter Lang           |                       | Forward       | Fr.     | 6’9”  | 235 | Charlottesville, Va. | St. Anne’s-Belfield School       |

Coaching Staff

Head Coach – Jerry Stackhouse, 5th season (North Carolina, 1999)

Associate Head Coach – Andy Fox, 5th season (Cornell [Iowa], 2004)

Assistant Coach – Anthony Wilkins, 1st season (Kent State, 2013)

Assistant Coach – James Strong, 5th season (Vanderbilt, 2000)

Support Staff

Chief of Staff – Adell Harris, 5th season (Wake Forest, 2002)

Special Assistant to the Head Coach – Nicki Gross, 5th season (Seton Hall, 2011)

Director of Player Personnel – Donald Williams, 1st season (North Carolina, 1995)

Director of Scouting – David Gale, 2nd season (Loyola Chicago, 2007)

Director Program Performance – Antonio Dawson, 2nd season (Florida State, 1989)

Director of Recruiting– Thomas Gray, 1st season (Mississippi College, 2009)

Director of On-Court Player Development– Brad Calipari, 1st season (Kentucky, 2019)

Director of Operations– Ian Thom, 1st season (Birmingham-Southern, 2017)

Assistant Director of Operations - Dan Dardarian, 1st season (Oakland, 2008)

Video Coordinator – Brian Pete, 3rd season (Gonzaga, 2018)

Director of Basketball Research & Special Projects – CJ Preston, 2nd season (Vanderbilt, 2018)

Strength and Conditioning – Marcus Edwards, 2nd season (Missouri, 2015)

Athletic Trainer – Brandon Wells, 6th season (UW Stevens Point, 2007)

| ROSTER BREAKDOWN  |   |  |  |
|---|---|--|--|
| <div>FRESHMEN (6)</div> <div>#4 Isaiah West</div> <div>#13 Malik Presley</div> <div>#15 Coleson Messer</div> <div>#23 Jason Rivera-Torres</div> <div>#24 JaQualon “JQ” Roberts</div> <div>#35 Carter Lang</div> <div>SOPHOMORES (6)</div> <div>#1 Colin Smith</div> <div>#2 Ven-Allen Lubin</div> <div>#3 Paul Lewis</div> <div>#10 Jordan Williams</div> <div>#25 Miles Keffe</div> <div>#34 Lee Dort</div> <div>JUNIORS (1)</div> <div>#22 Graham Calton</div> <div>SENIORS (1)</div> <div>#0 Tyrin Lawrance</div> <div>FIFTH-YEAR SENIORS (1)</div> <div>#5 Ezra Manjon</div> <div>GRADUATE STUDENTS (2)</div> <div>#12 Evan Taylor</div> <div>#21 Tasos Kamateros</div> | <div>GUARDS (8)</div> <div>#0 Tyrin Lawrence</div> <div>#3 Paul Lewis</div> <div>#4 Isaiah West</div> <div>#5 Ezra Manjon</div> <div>#10 Jordan Williams</div> <div>#15 Coleson Messer</div> <div>#22 Graham Calton</div> <div>#25 Miles Keffe</div> <div>GUARD/FORWARD (3)</div> <div>#12 Evan Taylor</div> <div>#13 Malik Presley</div> <div>#23 Jason Rivera-Torres</div> <div>FORWARDS (6)</div> <div>#1 Colin Smith</div> <div>#2 Ven-Allen Lubin</div> <div>#21 Tasos Kamateros</div> <div>#24 JaQualon “JQ” Roberts</div> <div>#34 Lee Dort</div> <div>#35 Carter Lang</div> | <div>ARRIVED AT VANDY VIA HIGH SCHOOL (12)</div> <div>#0 Tyrin Lawrence</div> <div>#1 Colin Smith</div> <div>#3 Paul Lewis</div> <div>#4 Isaiah West</div> <div>#13 Malik Presley</div> <div>#15 Coleson Messer</div> <div>#22 Graham Calton</div> <div>#23 Jason Rivera-Torres</div> <div>#24 JaQualon “JQ” Roberts</div> <div>#25 Miles Keffe</div> <div>#34 Lee Dort</div> <div>#35 Carter Lang</div> <div>TRANSFER (3)</div> <div>#2 Ven-Allen Lubin (Notre Dame)</div> <div>#5 Ezra Manjon (UC Davis)</div> <div>#10 Jordan Williams (Texas A&amp;M)</div> <div>GRAD TRANSFER (2)</div> <div>#12 Evan Taylor (Lehigh)</div> <div>#21 Tasos Kamateros (South Dakota)</div> | <div>CALIFORNIA (2)</div> <div>#5 Ezra Manjon</div> <div>#25 Miles Keffe</div> <div>FLORIDA (1)</div> <div>#2 Ven-Allen Lubin</div> <div>GEORGIA (1)</div> <div>#0 Tyrin Lawrence</div> <div>ILLINOIS (1)</div> <div>#12 Evan Taylor</div> <div>INDIANA (1)</div> <div>#24 JaQualon “JQ” Roberts</div> <div>NORTH CAROLINA (1)</div> <div>#22 Graham Calton</div> <div>TENNESSEE (1)</div> <div>#4 Isaiah West</div> <div>TEXAS (5)</div> <div>#1 Colin Smith</div> <div>#10 Jordan Williams</div> <div>#13 Malik Presley</div> <div>#15 Coleson Messer</div> <div>#34 Lee Dort</div> <div>VIRGINIA (2)</div> <div>#3 Paul Lewis</div> <div>#35 Carter Lang</div> <div>GREECE (1)</div> <div>#21 Tasos Kamateros</div> |





JERRY STACKHOUSE

- Fifth Season
- 28th Head Coach in program history
- Native of Kinston, North Carolina

EDUCATION

North Carolina (1999) - Bachelor's Degree in African American Studies  
Harvard Business School (2017) - Business of Entertainment, Media and Sports executive education program

PREVIOUS COACHING STOPS

| YEAR    | TEAM                    | POSITION        | RECORD | NOTE            |
|---------|-------------------------|-----------------|--------|-----------------|
| 2015-16 | Toronto Raptors (NBA)   | Assistant Coach |        |                 |
| 2016-17 | Raptors 905 (G-League)  | Head Coach      | 39-11  | G-League Champs |
| 2017-18 | Raptors 905 (G-League)  | Head Coach      | 31-19  | G-League Finals |
| 2018-19 | Memphis Grizzlies (NBA) | Assistant Coach |        |                 |

QUOTES

“Jerry Stackhouse is one of the outstanding emerging coaches in college basketball. His offense and his schemes are just impeccable. Vanderbilt runs great offense. I’m not sure there’s a team in the SEC that runs better stuff than Jerry Stackhouse’s Vanderbilt Commodores.”  
★ Jay Bilas on Jerry Stackhouse

“I’m going to be suited and booted. Coach Dean Smith approached it as a business, and I’m going to always honor him by wearing suits on the sideline.”  
★ Jerry Stackhouse on his suits during games

OTHER ITEMS OF NOTE

- One of two active NCAA D-I head coaches who was a top three of the NBA Draft pick
- Jerry Stackhouse 3rd - 1995; Penny Hardaway 3rd - 1993
- Has had 4 Vanderbilt student-athletes advance to the NBA
  - Aaron Nesmith (Boston Celtics - 1st round - 14th overall - 2020)
  - Saben Lee (Utah Jazz - 2nd round - 38th overall - 2020)
  - Scotty Pippen Jr. (Los Angeles Lakers - Undrafted free agent - 2022)
  - Liam Robbins (New Orleans Pelicans - Undrafted free agent - 2023)

| VANDERBILT RECORD   |         |        |      |          |     |
|---------------------|---------|--------|------|----------|-----|
| OVERALL: 66-84      | YEAR    | RECORD | SEC  | SEC TOUR | NIT |
| SEC: 24-53          | 2019-20 | 11-21  | 3-15 | 0-1      | --  |
| SEC TOURNAMENT: 5-4 | 2020-21 | 9-16   | 3-13 | 1-1      | --  |
| NIT: 4-2            | 2021-22 | 19-17  | 7-11 | 2-1      | 2-1 |
|                     | 2022-23 | 22-15  | 11-7 | 2-1      | 2-0 |
|                     | 2023-24 | 5-15   | 0-7  | --       | --  |

| DEVELOPMENT UNDER JERRY STACKHOUSE |                               |                              |
|------------------------------------|-------------------------------|------------------------------|
| STUDENT-ATHLETE                    | FRESHMAN                      | LATER                        |
| Tyrin Lawrence                     | 2020-21: 2.9 ppg              | 2022-23: 13.2 ppg            |
| Jordan Wright                      | 2019-20: 5.7 ppg, 2.8 rpg     | 2022-23: 10.5 ppg, 5.5 rpg   |
| Aaron Nesmith                      | *2018-19: 11.0 ppg, 33.7% 3pt | 2019-20: 23.0 ppg, 52.2% 3pt |
| Saben Lee                          | *2017-18: 10.6 ppg, 3.1 apg   | 2019-20: 18.6 ppg, 4.2 apg   |
| Scotty Pippen Jr.                  | 2019-20: 12.0 ppg, 3.6 apg    | 2021-22: 20.4 ppg, 4.5 apg   |

- Jerry Stackhouse has consistently developed his student-athlete during his time at Vandy.
- Three Commodores in the Stackhouse Era have gone to the NBA (Nesmith, Lee, Pippen)
- \* Aaron Nesmith and Saben Lee played their freshman seasons under Bryce Drew

THE UP AND UP

- Signed a contract extension with Vanderbilt - announced Oct. 18, 2022
- Vanderbilt has improved KPI in each of Stackhouse’s first four seasons and was the only SEC team to improve its NET ranking in 2019-20, 2020-21 and 2022-23.

| YEAR | 2022-23 | 2021-22 | 2020-21 | 2019-20 | *2018-19 |
|------|---------|---------|---------|---------|----------|
| NET  | 81      | 62      | 102     | 142     | *155     |
| KPI  | 39      | 75      | 160     | 137     | 170      |

\* 2018-19 team - year before Stackhouse arrived - finished 0-18 in SEC play

ACADEMICS

- The Stackhouse Era has produced two SEC Scholar of the Year award winners
  - Jordan Wright (2022), Dylan Disu (2021)
- In his seven semesters at Vanderbilt, the Commodores have had a team GPA of 3.0 or better in six semesters.
- Fall 2022 semester saw **three** on Dean’s List and **nine** with a 3.0 or better.

COLLEGE PLAYING CAREER

- Played for legendary coach Dean Smith at North Carolina
- 19.2 points and 8.2 rebounds per game as a sophomore in 1994-95
- 1995 Sports Illustrated National Player of the Year
- 1995 First Team All-America and First Team All-ACC
- Led UNC to the 1995 NCAA Final Four

PRO PLAYING CAREER

- Third overall pick in the 1995 NBA Draft by the Philadelphia 76ers
- Played 18 NBA seasons for eight teams (Philadelphia, Detroit, Washington, Dallas, Milwaukee, Miami, Atlanta, Brooklyn)
- Two-time NBA All-Star with Detroit Pistons (2000, 2001)
- Averaged 29.8 points per game during the 2000-01 season with Detroit
- Played in the 2006 NBA Finals with Dallas

## LAST TIME A COMMODORE ...

**Scored 25-29 points** – Evan Taylor (25) vs. Arizona State, 11/24/2023  
**Scored 30-34 points** – Liam Robbins (32) at Florida, 2/11/2023  
**Scored 35-39 points** – Scotty Pippen Jr. (36) at Cincinnati, 3/4/2021  
**Scored 40+ points** – Shan Foster (42) vs. Mississippi State, 3/5/2008

**Two players scored at least 20 points**

Jason Rivera-Torres (20) and Tyrin Lawrence (20) vs. Alabama, 1/6/2024

**Three players scored at least 20 points**

Derrick Byars (28), Shan Foster (21) and Ross Neltner (20) vs. Toledo, 12/2/2006

**Two players scored at least 30 points**

Saben Lee (33) and Maxwell Evans (31) vs. LSU, 2/5/2020

**Scored at least 20 points in three straight games** - Liam Robbins: 24 at South Carolina, 2/14/23; 24 vs. Auburn, 2/18/23, 23 at LSU, 2/22/23

**Scored 20 points in four straight games** – Liam Robbins: 32 at Florida, 2/11/23; 24 at South Carolina, 2/14/23; 24 vs. Auburn, 2/18/23, 23 at LSU, 2/22/23

**Scored 20 points in five straight games**

Scotty Pippen Jr.: 23 at Tennessee, 2/12/22; 29 at Auburn, 2/16/22; 24 vs. Texas A&M, 2/19/22, 26 vs. Alabama, 2/22/22; 32 at Mississippi State, 2/26/2022

**Scored 20 points in six straight games** – Scotty Pippen Jr.: 23 at Tennessee, 2/12/22; 29 at Auburn, 2/16/22; 24 vs. Texas A&M, 2/19/22, 26 vs. Alabama, 2/22/22; 32 at Mississippi State, 2/26/2022; 29 vs. Florida, 3/1/2022

**Scored 20 points in seven straight games** – Scotty Pippen Jr.: 23 at Tennessee, 2/12/22; 29 at Auburn, 2/16/22; 24 vs. Texas A&M, 2/19/22, 26 vs. Alabama, 2/22/22; 32 at Mississippi State, 2/26/2022; 29 vs. Florida, 3/1/2022; 22 at Ole Miss, 3/5/2022

**Five players scored in double figures** – at LSU, 1/9/2024: Ezra Manjon (19), Tyrin Lawrence (11), Ven-Allen Lubin (11), Jason Rivera-Torres (10), Evan Taylor (10)

**Six players scored in double figures** – vs. Florida, 2/25/23: Liam Robbins (18), Ezra Manjon (15), Tyrin Lawrence (13), Colin Smith (11), Myles Stute (11), Trey Thomas (11)

**Seven players scored in double figures** – vs. Detroit, 12/2/2015: Damian Jones (10), Wade Baldwin IV (20), Riley LaChance (10), Nolan Cressler (14), Joe Toye (10), Matthew Fisher-Davis (12) and Josh Henderson (11)

**Eight players scored in double figures** – vs. Savannah State, 11/27/2018: Aaron Nesmith (20), Simisola Shittu (17), Maxwell Evans (16), Yanni Wetzell (15), Joe Toye (13), Saben Lee (11), Matt Ryan (11) and Matthew Moyer (10)

**Four players with 15 or more points** – at Kentucky, 1/5/2021: Scotty Pippen Jr. (18), Dylan Disu (18), Jordan Wright (18) and Myles Stute (16)

**Double-Double** – Ven-Allen Lubin (17 pts, 12 reb) at Auburn, 1/31/2024

**20 points and 10 rebounds**

Liam Robbins (24 pts, 12 reb) vs. Auburn, 2/18/2023

**30 points and 10 rebounds**

Jeff Roberson (30 points, 10 rebounds) at Auburn, 2/3/2018

**Back-to-back 20-point, 10-rebound games** – Matt Freije: vs. South Carolina (26 points, 11 rebounds) 1/28/2004 and vs. Kentucky (20 points, 11 rebounds) 1/31/2004

**Double-Double in points and rebounds**

Ven-Allen Lubin (17 pts, 12 reb) at Auburn, 1/31/2024

**Double-Double in points and assists**

Scotty Pippen Jr.: 18 points, 12 assists vs. Mississippi State, 1/9/2021

**Double-Double in points and blocks**

Luke Kornet: 11 points, 10 blocks vs. Auburn, 1/12/2016

**Double-Double in points and steals** – Never

**Double-Double in two consecutive games** – Colin Smith: vs. UNCG (13 points, 11 rebounds), 11/14/2023; vs. Central Arkansas (14 points, 11 rebounds), 11/17/2023

**Double-Double in three consecutive games** – Jeff Roberson: vs. Austin Peay (13 points, 10 rebounds), 11/10/2017; at Belmont (13 points, 12 rebounds), 11/13/2017; vs. UNC Asheville (17 points, 12 rebounds), 11/17/2017

**Two players record a double-double** – Liam Robbins (32 points, 10 rebounds) and Jordan Wright (10 points, 10 rebounds), at Florida, 2/11/2023

**Triple-Double** – Luke Kornet (11 points, 11 rebounds, 10 blocks) vs. Auburn, 1/12/2016

**Made 10 field goals in a game** – Liam Robbins (10) at Florida, 2/11/2023

**Made 16 field goals in a game** – Shan Foster vs. Mississippi State, 3/5/2008

**Attempted 20 field goals in a game** – Scotty Pippen Jr. (21) at Xavier, 3/22/2022

**Made 6 3-pointers in a game** – Myles Stute at VCU, 11/30/2022

**Made 7 3-pointers in a game** – Myles Stute at Texas A&M, 1/28/2023

**Made 8 3-pointers in a game** – Scotty Pippen Jr. at SMU, 12/4/2021

**Made 9 3-pointers in a game** – Shan Foster vs. Mississippi State, 3/5/2008

**Attempted 10 3-pointers in a game** – Evan Taylor vs. Presbyterian, 11/7/2023

**Attempted 14 3-pointers in a game** – Myles Stute at Texas A&M, 1/28/2023

**Attempted 15 3-pointers in a game** – John Jenkins (16) vs. Oregon, 11/11/2011

**Made 10-14 free throws in a game** – Ezra Manjon (12) vs. UNCG, 11/14/2023

**Made 15-19 free throws in a game** – Liam Robbins (17) vs. Auburn, 2/18/2023

**Attempted 20+ free throws in a game** – Liam Robbins (20) vs. Auburn, 2/18/2023

**10-14 rebounds in a game** – Ven-Allen Lubin (10) vs. Alabama A&M, 12/2/2023

**15 rebounds in a game** – Dylan Disu (15) at Alabama, 2/20/2021

**16 rebounds in a game** – Dylan Disu (16) vs. Kentucky, 2/17/2021

**At least 10 rebounds in three consecutive games** – Dylan Disu: 10 vs. Auburn, 2/9/2021; 10 at Mississippi State, 2/13/2021; 16 vs. Kentucky, 2/17/2021

**At least 10 rebounds in four consecutive games** – Dylan Disu: 10 vs. Auburn, 2/9/2021; 10 at Mississippi State, 2/13/2021; 16 vs. Kentucky, 2/17/2021, 15 at Alabama, 2/20/2021

**8 assists** – Ezra Manjon (8) at Florida, 2/11/2023

**9 assists** – Ezra Manjon (9) at Temple, 11/15/20122

**10 assists** – Scotty Pippen Jr. (12) vs. Mississippi State, 1/9/2021

**11 assists** – Scotty Pippen Jr. (12) vs. Mississippi State, 1/9/2021

**12 assists** – Scotty Pippen Jr. (12) vs. Mississippi State, 1/9/2021

**13 assists** – Mario Moore (13) vs. Arkansas, 2/19/2005

**14 assists** – Billy McCaffrey (14) vs. Kentucky, 1/13/1993

**5 or more assists in five consecutive games** – Ezra Manjon

7 vs. Ole Miss, 2/4/2023; 5 vs. Tennessee, 2/8/2023; 8 at Florida, 2/11/2023; 6 at South Carolina, 2/14/2023; 5 vs. Auburn, 2/18/2023

**8 or more assists in two consecutive games**

Scotty Pippen: 8 at Kentucky, 1/5/2021; 12 vs. Mississippi State, 1/9/2021

**4 blocked shots** – Liam Robbins at Florida, 2/11/2023

**5 blocked shots** – Liam Robbins vs. Florida, 2/25/2023

**6 blocked shots** – Liam Robbins vs. South Carolina, 1/3/2023

**8 blocked shots** – Liam Robbins vs. Fresno State, 11/24/22

**9 blocked shots** – Liam Robbins at LSU, 2/22/23

**10 blocked shots** – Luke Kornet vs. Auburn, 1/12/2016

**5 steals** – Scotty Pippen Jr. at Auburn, 2/16/2022

**6 steals** – Scotty Pippen Jr vs. Alabama, 2/22/2022

**8 steals** – James Strong vs. Morehead State, 11/24/1998

**Played every minute** – Saben Lee vs Texas A&M, 3/13/19

**Played more than 40 minutes** – Scotty Pippen Jr. (43), vs. Dayton, 3/20/2022

**All 5 starters played 40 minutes** – Steve Tchiengang (40), Brad Tinsley (40), Lance Goulbourne (41), Jeffery Taylor (41) and John Jenkins (41), at Louisville, 12/2/2011

**Technical foul** – Tyrin Lawrence vs. NC State, 11/23/2023

**Ejection** – Ezra Manjon vs. Arkansas, 1/14/2023

**Three fouled out** – Saben Lee, Clevon Brown, Djery Baptiste vs. Tennessee, 1/9/2018





TYRIN LAWRENCE

O

Senior // Guard  
6'4" // 200  
Monticello, Ga.  
Sunrise Christian Acad. (Kan.)  
TY-rin

TOP GAMES OF 2023-24

21 pts, 8 rebs, 3 ast, 2 stl

vs. Tennessee (1/27/24)

20 pts, 5 rebs, 3 stl

vs. Alabama (1/6/24)

22 pts, 8 rebs, 3 ast

vs. Dartmouth (12/30/23)

21 pts, 7 rebs

vs. NC State (11/23/23)

| LAWRENCE, Tyrin |       |       |           |             |      |          |      |          |      |          |     |     |     |       |     |     |     |         |     |      |
|-----------------|-------|-------|-----------|-------------|------|----------|------|----------|------|----------|-----|-----|-----|-------|-----|-----|-----|---------|-----|------|
|                 |       |       |           | Field Goals |      | 3-Point  |      | F-Throws |      | Rebounds |     |     |     |       |     |     |     | Scoring |     |      |
| SEASON          | TEAM  | GP-GS | MIN/AVG   | FG-FGA      | FG%  | 3FG-3FGA | 3FG% | FT-FTA   | FT%  | OFF      | DEF | TOT | AVG | PF-FO | A   | TO  | BLK | STL     | PTS | AVG  |
| 2020-21         | Vandy | 7-5   | 90/12.8   | 9-18        | .500 | 0-6      | .000 | 2-3      | .667 | 6        | 10  | 16  | 2.3 | 5-0   | 9   | 5   | 0   | 4       | 20  | 2.9  |
| 2021-22         | Vandy | 34-13 | 515/15.1  | 48-117      | .410 | 10-49    | .204 | 24-35    | .686 | 11       | 64  | 75  | 2.2 | 39-0  | 24  | 33  | 4   | 20      | 130 | 3.8  |
| 2022-23         | Vandy | 36-34 | 1043/29.0 | 165-329     | .502 | 36-100   | .360 | 104-140  | .743 | 22       | 136 | 158 | 4.4 | 60-0  | 61  | 63  | 5   | 35      | 470 | 13.1 |
| 2023-24         | Vandy | 16-16 | 495/30.9  | 70-181      | .387 | 16-59    | .271 | 71-99    | .717 | 10       | 73  | 83  | 5.2 | 27-0  | 29  | 36  | 7   | 29      | 227 | 14.2 |
| TOTAL           |       | 93-68 | 2142/23.0 | 292-645     | .453 | 62-214   | .290 | 201-277  | .726 | 49       | 283 | 332 | 3.6 | 131-0 | 123 | 137 | 16  | 88      | 847 | 9.1  |

| Statistic    | Value |  |
|--------------|-------|--|
| Points       | 25    | vs Yale 03/14/23                             |
| Rebounds     | 10    | vs Ole Miss 02/04/23                         |
| Assists      | 5     | vs Arizona St. 11/24/23                      |
| Steals       | 4     | vs NC State 11/23/23, vs Texas Tech 12/16/23 |
| Blocks       | 2     | vs LSU 03/09/23, at Auburn 01/31/24          |
| FG Made      | 10    | vs Michigan 03/18/23                         |
| FG Attempts  | 19    | vs Alabama 01/06/24                          |
| 3FG Made     | 3     | vs Tennessee 02/08/23, vs Yale 03/14/23      |
| 3FG Attempts | 8     | vs Arizona St. 11/24/23                      |
| FT Made      | 11    | vs Alabama 01/17/23                          |

| Opponent           | Date       | GS | MIN   | Total  |        | 3-Pointers |       | Free throws |       | Rebounds |     |     |     | PF  | A  | TO | BLK | STL | PTS | AVG  |      |
|--------------------|------------|----|-------|--------|--------|------------|-------|-------------|-------|----------|-----|-----|-----|-----|----|----|-----|-----|-----|------|------|
|                    |            |    |       | FG-FA  | PCT    | 3FG-3FA    | PCT   | FT-FTA      | PCT   | OFF      | DEF | TOT | AVG |     |    |    |     |     |     |      |      |
| vs NC State        | 11/23/2023 | *  | 28:56 | 5-11   | .455   | 1-2        | .500  | 10-14       | .714  | 0        | 7   | 7   | 7.0 | 4   | 2  | 5  | 0   | 4   | 21  | 21.0 |      |
| vs Arizona St.     | 11/24/2023 | *  | 29:16 | 5-15   | .333   | 2-8        | .250  | 3-5         | .600  | 3        | 3   | 6   | 6.5 | 2   | 5  | 2  | 0   | 1   | 15  | 18.0 |      |
| Boston College     | 11/29/2023 | *  | 21:31 | 2-4    | .500   | 1-2        | .500  | 1-2         | .500  | 1        | 2   | 3   | 5.3 | 0   | 0  | 1  | 0   | 0   | 6   | 14.0 |      |
| Alabama A&M        | 12/02/2023 | *  | 31:06 | 5-9    | .556   | 1-4        | .250  | 8-10        | .800  | 0        | 4   | 4   | 5.0 | 0   | 2  | 2  | 0   | 1   | 19  | 15.3 |      |
| San Francisco      | 12/06/2023 | *  | 22:56 | 2-4    | .500   | 0-1        | .000  | 1-2         | .500  | 0        | 3   | 3   | 4.6 | 0   | 3  | 2  | 0   | 2   | 5   | 13.2 |      |
| vs Texas Tech      | 12/16/2023 | *  | 29:28 | 3-12   | .250   | 1-6        | .167  | 1-3         | .333  | 0        | 3   | 3   | 4.3 | 1   | 2  | 1  | 1   | 4   | 8   | 12.3 |      |
| Western Caro.      | 12/19/2023 | *  | 30:51 | 3-13   | .231   | 0-2        | .000  | 4-6         | .667  | 1        | 4   | 5   | 4.4 | 1   | 0  | 1  | 1   | 2   | 10  | 12.0 |      |
| at Memphis         | 12/23/2023 | *  | 32:35 | 3-8    | .375   | 1-1        | 1.000 | 5-5         | 1.000 | 1        | 5   | 6   | 4.6 | 4   | 4  | 3  | 1   | 1   | 12  | 12.0 |      |
| Dartmouth          | 12/30/2023 | *  | 34:48 | 7-16   | .438   | 2-4        | .500  | 6-7         | .857  | 1        | 7   | 8   | 5.0 | 2   | 3  | 2  | 0   | 2   | 22  | 13.1 |      |
| Alabama            | 01/06/2024 | *  | 34:55 | 7-19   | .368   | 2-6        | .333  | 4-6         | .667  | 1        | 4   | 5   | 5.0 | 0   | 1  | 2  | 0   | 3   | 20  | 13.8 |      |
| at LSU             | 01/09/2024 | *  | 29:36 | 4-10   | .400   | 1-4        | .250  | 2-3         | .667  | 0        | 6   | 6   | 5.1 | 2   | 1  | 2  | 1   | 2   | 11  | 13.5 |      |
| at Ole Miss        | 01/13/2024 | *  | 32:50 | 5-12   | .417   | 0-3        | .000  | 4-7         | .571  | 1        | 5   | 6   | 5.2 | 3   | 0  | 3  | 0   | 3   | 14  | 13.6 |      |
| Auburn             | 01/17/2024 | *  | 34:03 | 3-12   | .250   | 2-6        | .333  | 7-8         | .875  | 1        | 2   | 3   | 5.0 | 2   | 2  | 3  | 1   | 1   | 15  | 13.7 |      |
| at Mississippi St. | 01/20/2024 | *  | 34:43 | 6-12   | .500   | 0-1        | .000  | 4-5         | .800  | 0        | 4   | 4   | 4.9 | 3   | 1  | 2  | 0   | 1   | 16  | 13.9 |      |
| Tennessee          | 01/27/2024 | *  | 37:10 | 8-13   | .615   | 2-6        | .333  | 3-5         | .600  | 0        | 8   | 8   | 5.1 | 1   | 3  | 2  | 0   | 2   | 21  | 14.3 |      |
| at Auburn          | 01/31/2024 | *  | 29:49 | 2-11   | .182   | 0-3        | .000  | 8-11        | .727  | 0        | 6   | 6   | 5.2 | 2   | 0  | 3  | 2   | 0   | 12  | 14.2 |      |
| Totals             |            |    | 16    | 494:34 | 70-181 | .387       | 16-59 | .271        | 71-99 | .717     | 10  | 73  | 83  | 5.2 | 27 | 29 | 36  | 7   | 29  | 227  | 14.2 |

| Player Averages |               |              |        |         |        |                |               |                 |                       |              |              |
|-----------------|---------------|--------------|--------|---------|--------|----------------|---------------|-----------------|-----------------------|--------------|--------------|
| Games Played    | Minutes/ game | Points/ game | FG Pct | 3FG Pct | FT Pct | Rebounds/ game | Assists/ game | Turnovers/ game | Assist/Turnover ratio | Steals/ game | Blocks/ game |
| 16              | 30.9          | 14.2         | 38.7   | 27.1    | 71.7   | 5.2            | 1.8           | 2.3             | 0.8                   | 1.8          | 0.4          |





COLIN SMITH

1

Sophomore // Forward  
6'8" // 220  
Dallas, Texas  
Compass Prep (Ariz.)

TOP GAMES OF 2023-24

14 pts, 11 rebs  
vs. Central Ark. (11/17/23)

13 pts, 11 rebs  
vs. UNCG (11/14/23)

8 pts, 9 rebs  
vs. USC Upstate (11/10/23)

|         |       |       |          | Field Goals |      | 3-Point  |      | F-Throws |      | Rebounds |     |     |     |       |    |    |     |     |     |     |  | Scoring |  |
|---------|-------|-------|----------|-------------|------|----------|------|----------|------|----------|-----|-----|-----|-------|----|----|-----|-----|-----|-----|--|---------|--|
| SEASON  | TEAM  | GP-GS | MIN/AVG  | FG-FGA      | FG%  | 3FG-3FGA | 3FG% | FT-FTA   | FT%  | OFF      | DEF | TOT | AVG | PF-FO | A  | TO | BLK | STL | PTS | AVG |  |         |  |
| 2022-23 | Vandy | 36-16 | 605/16.8 | 53-136      | .390 | 35-93    | .376 | 29-42    | .690 | 31       | 60  | 91  | 2.5 | 41-0  | 20 | 15 | 3   | 5   | 170 | 4.7 |  |         |  |
| 2023-24 | Vandy | 7-6   | 178/25.5 | 17-48       | .354 | 9-33     | .273 | 7-13     | .538 | 16       | 30  | 46  | 6.6 | 12-0  | 2  | 7  | 2   | 7   | 50  | 7.1 |  |         |  |
| TOTAL   |       | 43-22 | 783/18.2 | 70-184      | .380 | 44-126   | .349 | 36-55    | .655 | 47       | 90  | 137 | 3.2 | 53-0  | 22 | 22 | 5   | 12  | 220 | 5.1 |  |         |  |

Single Game Highs

| Statistic    | Value |   |
|--------------|-------|---|
| Points       | 15    | vs Texas A&M 03/11/23   |
| Rebounds     | 11    | vs UNC Greensboro 11/14/23, vs Central Ark. 11/17/23                      |
| Assists      | 2     | vs South Carolina 01/03/23, at Tennessee 01/10/23                         |
| Steals       | 2     | 4 times   |
| Blocks       | 1     | 5 times   |
| FG Made      | 5     | vs Texas A&M 03/11/23, vs UNC Greensboro 11/14/23                         |
| FG Attempts  | 11    | vs UNC Greensboro 11/14/23  |
| 3FG Made     | 5     | vs Texas A&M 03/11/23   |
| 3FG Attempts | 7     | vs Michigan 03/18/23, vs UNC Greensboro 11/14/23                          |
| FT Made      | 4     | vs Tennessee 02/08/23, vs Kentucky 03/10/23, vs Central Ark. 11/17/23     |
| FT Attempts  | 5     | vs Tennessee 02/08/23, vs Presbyterian 11/07/23, vs Central Ark. 11/17/23 |

| Opponent       | Date       | GS | MIN    | Total  |      | 3-Pointers |      | Free throws |       | Rebounds |     |     |     | PF | A | TO | BLK | STL | PTS | AVG |
|----------------|------------|----|--------|--------|------|------------|------|-------------|-------|----------|-----|-----|-----|----|---|----|-----|-----|-----|-----|
|                |            |    |        | FG-FGA | PCT  | 3FG-3FGA   | PCT  | FT-FTA      | PCT   | OFF      | DEF | TOT | AVG |    |   |    |     |     |     |     |
| Presbyterian   | 11/07/2023 | *  | 26:58  | 1-8    | .125 | 0-5        | .000 | 1-5         | .200  | 3        | 4   | 7   | 7.0 | 1  | 0 | 1  | 0   | 2   | 3   | 3.0 |
| USC Upstate    | 11/10/2023 | *  | 31:15  | 2-5    | .400 | 2-4        | .500 | 2-2         | 1.000 | 2        | 7   | 9   | 8.0 | 2  | 0 | 3  | 1   | 0   | 8   | 5.5 |
| UNC Greensboro | 11/14/2023 | *  | 32:18  | 5-11   | .455 | 3-7        | .429 | 0-0         | .000  | 5        | 6   | 11  | 9.0 | 2  | 1 | 1  | 1   | 0   | 13  | 8.0 |
| Central Ark.   | 11/17/2023 | *  | 32:06  | 4-9    | .444 | 2-6        | .333 | 4-5         | .800  | 5        | 6   | 11  | 9.5 | 4  | 1 | 0  | 0   | 1   | 14  | 9.5 |
| vs NC State    | 11/23/2023 | *  | 24:27  | 2-6    | .333 | 0-4        | .000 | 0-0         | .000  | 0        | 5   | 5   | 8.6 | 1  | 0 | 0  | 0   | 2   | 4   | 8.4 |
| San Francisco  | 12/06/2023 |    | 27:03  | 3-7    | .429 | 2-5        | .400 | 0-1         | .000  | 0        | 2   | 2   | 7.5 | 2  | 0 | 1  | 0   | 2   | 8   | 8.3 |
| vs Texas Tech  | 12/16/2023 | *  | 04:08  | 0-2    | .000 | 0-2        | .000 | 0-0         | .000  | 1        | 0   | 1   | 6.6 | 0  | 0 | 1  | 0   | 0   | 0   | 7.1 |
| Totals         |            | 6  | 178:15 | 17-48  | .354 | 9-33       | .273 | 7-13        | .538  | 16       | 30  | 46  | 6.6 | 12 | 2 | 7  | 2   | 7   | 50  | 7.1 |

Player Averages

| Games Played | Minutes/ game | Points/ game | FG Pct | 3FG Pct | FT Pct | Rebounds/ game | Assists/ game | Turnovers/ game | Assist/Turnover ratio | Steals/ game | Blocks/ game |
|--------------|---------------|--------------|--------|---------|--------|----------------|---------------|-----------------|-----------------------|--------------|--------------|
| 7            | 25.5          | 7.1          | 35.4   | 27.3    | 53.8   | 6.6            | 0.3           | 1.0             | 0.3                   | 1.0          | 0.3          |



VEN-ALLEN LUBIN

2

Sophomore // Forward  
6'8" // 230  
Orlando, Fla.  
Univ. of Notre Dame  
LEW-bin

TOP GAMES OF 2023-24

- 17 pts, 12 rebs  
at Auburn (1/31/24)
- 14 pts, 10 rebs  
vs. Alabama A&M (12/2/23)

- 16 pts, 8 rebs  
vs. NC State (11/23/23)

- 11 pts, 8 rebs  
at Mississippi State (1/20/24)

LUBIN, Ven-allen

|                 |       |       |          | Field Goals |      | 3-Point  |      | F-Throws |      | Rebounds |     |     |     |       |    |    |     | Scoring |     |      |
|-----------------|-------|-------|----------|-------------|------|----------|------|----------|------|----------|-----|-----|-----|-------|----|----|-----|---------|-----|------|
| SEASON          | TEAM  | GP-GS | MIN/AVG  | FG-FGA      | FG%  | 3FG-3FGA | 3FG% | FT-FTA   | FT%  | OFF      | DEF | TOT | AVG | PF-FO | A  | TO | BLK | STL     | PTS | AVG  |
| 2022-23         | ND    | 28-7  | 489/17.5 | 76-131      | .580 | 1-11     | .091 | 21-31    | .677 | 44       | 79  | 123 | 4.4 | 49-1  | 10 | 21 | 23  | 9       | 174 | 6.2  |
| 2023-24         | Vandy | 14-14 | 359/25.6 | 51-105      | .486 | 6-18     | .333 | 33-41    | .805 | 27       | 52  | 79  | 5.6 | 28-0  | 7  | 14 | 16  | 6       | 141 | 10.1 |
| TOTAL FOR Vandy |       | 14-14 | 359/25.6 | 51-105      | .486 | 6-18     | .333 | 33-41    | .805 | 27       | 52  | 79  | 5.6 | 28-0  | 7  | 14 | 16  | 6       | 141 | 10.1 |
| TOTAL           |       | 42-21 | 848/20.2 | 127-236     | .538 | 7-29     | .241 | 54-72    | .750 | 71       | 131 | 202 | 4.8 | 77-1  | 17 | 35 | 39  | 15      | 315 | 7.5  |

Single Game Highs

| Statistic    | Value |  |
|--------------|-------|--|
| Points       | 19    | at Wake Forest 02/25/23  |
| Rebounds     | 13    | vs St. Bonaventure 11/25/22  |
| Assists      | 2     | vs Bowling Green 11/22/22, vs Alabama 01/06/24                     |
| Steals       | 2     | vs St. Bonaventure 11/25/22  |
| Blocks       | 3     | vs Boston U. 12/07/22, at Wake Forest 02/25/23, at Auburn 01/31/24 |
| FG Made      | 9     | at Wake Forest 02/25/23  |
| FG Attempts  | 13    | at Wake Forest 02/25/23  |
| 3FG Made     | 2     | vs Alabama A&M 12/02/23  |
| 3FG Attempts | 5     | vs Alabama A&M 12/02/23  |
| FT Made      | 6     | at Auburn 01/31/24   |
| FT Attempts  | 8     | at Auburn 01/31/24   |

| Opponent           | Date       | GS | MIN   | Total  |        | 3-Pointers |      | Free throws |       | Rebounds |     |     |     |     |    |    |     |     |     |      |      |
|--------------------|------------|----|-------|--------|--------|------------|------|-------------|-------|----------|-----|-----|-----|-----|----|----|-----|-----|-----|------|------|
|                    |            |    |       | FG-FGA | PCT    | 3FG-3FGA   | PCT  | FT-FTA      | PCT   | OFF      | DEF | TOT | AVG | PF  | A  | TO | BLK | STL | PTS | AVG  |      |
| vs NC State        | 11/23/2023 | *  | 28:06 | 6-10   | .600   | 0-1        | .000 | 4-4         | 1.000 | 2        | 6   | 8   | 8.0 | 3   | 1  | 2  | 1   | 1   | 16  | 16.0 |      |
| vs Arizona St.     | 11/24/2023 | *  | 25:37 | 5-7    | .714   | 0-0        | .000 | 1-1         | 1.000 | 1        | 5   | 6   | 7.0 | 2   | 0  | 0  | 0   | 0   | 11  | 13.5 |      |
| Boston College     | 11/29/2023 | *  | 23:20 | 2-7    | .286   | 0-1        | .000 | 1-2         | .500  | 1        | 5   | 6   | 6.7 | 2   | 0  | 2  | 1   | 0   | 5   | 10.7 |      |
| Alabama A&M        | 12/02/2023 | *  | 27:42 | 4-9    | .444   | 2-5        | .400 | 4-5         | .800  | 2        | 8   | 10  | 7.5 | 2   | 0  | 0  | 1   | 0   | 14  | 11.5 |      |
| San Francisco      | 12/06/2023 | *  | 31:46 | 6-12   | .500   | 1-3        | .333 | 2-2         | 1.000 | 1        | 1   | 2   | 6.4 | 0   | 0  | 0  | 2   | 0   | 15  | 12.2 |      |
| vs Texas Tech      | 12/16/2023 | *  | 31:26 | 5-8    | .625   | 0-0        | .000 | 5-6         | .833  | 1        | 3   | 4   | 6.0 | 1   | 1  | 1  | 0   | 0   | 15  | 12.7 |      |
| at Memphis         | 12/23/2023 | *  | 09:01 | 0-2    | .000   | 0-0        | .000 | 0-0         | .000  | 1        | 1   | 2   | 5.4 | 2   | 0  | 1  | 2   | 0   | 0   | 10.9 |      |
| Alabama            | 01/06/2024 | *  | 15:25 | 1-2    | .500   | 0-0        | .000 | 2-2         | 1.000 | 2        | 2   | 4   | 5.3 | 2   | 2  | 1  | 1   | 0   | 4   | 10.0 |      |
| at LSU             | 01/09/2024 | *  | 27:00 | 5-7    | .714   | 0-0        | .000 | 1-1         | 1.000 | 1        | 2   | 3   | 5.0 | 1   | 1  | 1  | 1   | 1   | 11  | 10.1 |      |
| at Ole Miss        | 01/13/2024 | *  | 26:56 | 2-7    | .286   | 0-1        | .000 | 1-2         | .500  | 1        | 1   | 2   | 4.7 | 2   | 1  | 2  | 2   | 1   | 5   | 9.6  |      |
| Auburn             | 01/17/2024 | *  | 28:36 | 3-8    | .375   | 1-2        | .500 | 2-2         | 1.000 | 2        | 4   | 6   | 4.8 | 4   | 0  | 0  | 0   | 1   | 9   | 9.5  |      |
| at Mississippi St. | 01/20/2024 | *  | 26:40 | 4-6    | .667   | 0-1        | .000 | 3-4         | .750  | 1        | 7   | 8   | 5.1 | 3   | 1  | 1  | 1   | 0   | 11  | 9.7  |      |
| Tennessee          | 01/27/2024 | *  | 28:58 | 3-9    | .333   | 1-2        | .500 | 1-2         | .500  | 3        | 3   | 6   | 5.2 | 2   | 0  | 1  | 1   | 1   | 8   | 9.5  |      |
| at Auburn          | 01/31/2024 | *  | 28:23 | 5-11   | .455   | 1-2        | .500 | 6-8         | .750  | 8        | 4   | 12  | 5.6 | 2   | 0  | 2  | 3   | 1   | 17  | 10.1 |      |
| Totals             |            |    | 14    | 358:56 | 51-105 | .486       | 6-18 | .333        | 33-41 | .805     | 27  | 52  | 79  | 5.6 | 28 | 7  | 14  | 16  | 6   | 141  | 10.1 |

Player Averages

| Games Played | Minutes/ game | Points/ game | FG Pct | 3FG Pct | FT Pct | Rebounds/ game | Assists/ game | Turnovers/ game | Assist/Turnover ratio | Steals/ game | Blocks/ game |
|--------------|---------------|--------------|--------|---------|--------|----------------|---------------|-----------------|-----------------------|--------------|--------------|
| 14           | 25.6          | 10.1         | 48.6   | 33.3    | 80.5   | 5.6            | 0.5           | 1.0             | 0.5                   | 0.4          | 1.1          |



3

PAUL LEWIS

Sophomore // Guard  
6'2" // 175  
Woodbridge, Va.  
Bishop O'Connell

TOP GAMES OF 2023-24

10 pts, 3 ast  
vs. USC Upstate (11/10/23)

|         |       |       |          | Field Goals |      | 3-Point  |      | F-Throws |      | Rebounds |     |     |     |       |    |    |     |     |  |     |     | Scoring |  |
|---------|-------|-------|----------|-------------|------|----------|------|----------|------|----------|-----|-----|-----|-------|----|----|-----|-----|--|-----|-----|---------|--|
| SEASON  | TEAM  | GP-GS | MIN/AVG  | FG-FGA      | FG%  | 3FG-3FGA | 3FG% | FT-FTA   | FT%  | OFF      | DEF | TOT | AVG | PF-FO | A  | TO | BLK | STL |  | PTS | AVG |         |  |
| 2022-23 | Vandy | 25-5  | 250/10.0 | 26-62       | .419 | 15-38    | .395 | 6-9      | .667 | 6        | 16  | 22  | 0.9 | 12-0  | 22 | 14 | 0   | 11  |  | 73  | 2.9 |         |  |
| 2023-24 | Vandy | 19-3  | 312/16.4 | 26-85       | .306 | 10-46    | .217 | 8-13     | .615 | 5        | 16  | 21  | 1.1 | 21-0  | 31 | 17 | 1   | 5   |  | 70  | 3.7 |         |  |
| TOTAL   |       | 44-8  | 561/12.8 | 52-147      | .354 | 25-84    | .298 | 14-22    | .636 | 11       | 32  | 43  | 1.0 | 33-0  | 53 | 31 | 1   | 16  |  | 143 | 3.3 |         |  |

Single Game Highs

| Statistic    | Value |                                      |
|--------------|-------|--------------------------------------|
| Points       | 11    | vs LSU 03/09/23                      |
| Rebounds     | 4     | vs NC State 11/23/23                 |
| Assists      | 4     | vs Arizona St. 11/24/23              |
| Steals       | 2     | at Alabama 01/31/23, vs UAB 03/22/23 |
| Blocks       | 1     | vs Texas Tech 12/16/23               |
| FG Made      | 4     | at Alabama 01/31/23, vs LSU 03/09/23 |
| FG Attempts  | 8     | 4 times                              |
| 3FG Made     | 2     | 6 times                              |
| 3FG Attempts | 6     | vs NC State 11/23/23                 |
| FT Made      | 5     | vs USC Upstate 11/10/23              |
| FT Attempts  | 5     | vs USC Upstate 11/10/23              |

| Opponent           | Date       | GS | MIN    | Total  |      | 3-Pointers |      | Free throws |       | Rebounds |     |     |     | PF | A  | TO | BLK | STL | PTS | AVG |
|--------------------|------------|----|--------|--------|------|------------|------|-------------|-------|----------|-----|-----|-----|----|----|----|-----|-----|-----|-----|
|                    |            |    |        | FG-FGA | PCT  | 3FG-3FGA   | PCT  | FT-FTA      | PCT   | OFF      | DEF | TOT | AVG |    |    |    |     |     |     |     |
| Presbyterian       | 11/07/2023 | *  | 22:47  | 3-8    | .375 | 1-5        | .200 | 0-0         | .000  | 2        | 0   | 2   | 2.0 | 0  | 3  | 1  | 0   | 1   | 7   | 7.0 |
| USC Upstate        | 11/10/2023 |    | 23:26  | 2-7    | .286 | 1-3        | .333 | 5-5         | 1.000 | 2        | 0   | 2   | 2.0 | 1  | 3  | 3  | 0   | 0   | 10  | 8.5 |
| UNC Greensboro     | 11/14/2023 |    | 19:49  | 1-7    | .143 | 0-4        | .000 | 0-0         | .000  | 0        | 2   | 2   | 2.0 | 2  | 1  | 1  | 0   | 0   | 2   | 6.3 |
| Central Ark.       | 11/17/2023 |    | 15:23  | 3-6    | .500 | 1-3        | .333 | 0-0         | .000  | 0        | 1   | 1   | 1.8 | 1  | 2  | 1  | 0   | 1   | 7   | 6.5 |
| vs NC State        | 11/23/2023 | *  | 32:08  | 3-8    | .375 | 2-6        | .333 | 0-0         | .000  | 0        | 4   | 4   | 2.2 | 3  | 3  | 3  | 0   | 0   | 8   | 6.8 |
| vs Arizona St.     | 11/24/2023 | *  | 29:16  | 1-5    | .200 | 0-3        | .000 | 1-2         | .500  | 1        | 0   | 1   | 2.0 | 3  | 4  | 1  | 0   | 1   | 3   | 6.2 |
| Boston College     | 11/29/2023 |    | 18:27  | 2-4    | .500 | 1-3        | .333 | 0-0         | .000  | 0        | 1   | 1   | 1.9 | 2  | 2  | 0  | 0   | 0   | 5   | 6.0 |
| Alabama A&M        | 12/02/2023 |    | 12:48  | 1-4    | .250 | 0-2        | .000 | 0-0         | .000  | 0        | 0   | 0   | 1.6 | 0  | 2  | 2  | 0   | 0   | 2   | 5.5 |
| San Francisco      | 12/06/2023 |    | 05:42  | 0-1    | .000 | 0-1        | .000 | 0-0         | .000  | 0        | 0   | 0   | 1.4 | 0  | 2  | 1  | 0   | 0   | 0   | 4.9 |
| vs Texas Tech      | 12/16/2023 |    | 05:57  | 0-3    | .000 | 0-1        | .000 | 0-0         | .000  | 0        | 2   | 2   | 1.5 | 0  | 1  | 0  | 1   | 0   | 0   | 4.4 |
| Western Caro.      | 12/19/2023 |    | 21:54  | 3-8    | .375 | 0-3        | .000 | 1-1         | 1.000 | 0        | 1   | 1   | 1.5 | 1  | 2  | 1  | 0   | 1   | 7   | 4.6 |
| at Memphis         | 12/23/2023 |    | 19:32  | 1-2    | .500 | 0-1        | .000 | 0-0         | .000  | 0        | 2   | 2   | 1.5 | 3  | 2  | 2  | 0   | 0   | 2   | 4.4 |
| Dartmouth          | 12/30/2023 |    | 15:16  | 1-3    | .333 | 1-3        | .333 | 0-0         | .000  | 0        | 1   | 1   | 1.5 | 1  | 1  | 0  | 0   | 0   | 3   | 4.3 |
| Alabama            | 01/06/2024 |    | 08:57  | 0-1    | .000 | 0-0        | .000 | 0-0         | .000  | 0        | 0   | 0   | 1.4 | 1  | 0  | 0  | 0   | 0   | 0   | 4.0 |
| at LSU             | 01/09/2024 |    | 14:24  | 1-3    | .333 | 1-3        | .333 | 0-0         | .000  | 0        | 2   | 2   | 1.4 | 0  | 2  | 1  | 0   | 0   | 3   | 3.9 |
| Auburn             | 01/17/2024 |    | 05:22  | 0-1    | .000 | 0-1        | .000 | 0-3         | .000  | 0        | 0   | 0   | 1.3 | 1  | 0  | 0  | 0   | 0   | 0   | 3.7 |
| at Mississippi St. | 01/20/2024 |    | 06:52  | 0-3    | .000 | 0-1        | .000 | 1-2         | .500  | 0        | 0   | 0   | 1.2 | 1  | 0  | 0  | 0   | 0   | 1   | 3.5 |
| Tennessee          | 01/27/2024 |    | 14:36  | 2-4    | .500 | 2-3        | .667 | 0-0         | .000  | 0        | 0   | 0   | 1.2 | 1  | 0  | 0  | 0   | 0   | 6   | 3.7 |
| at Auburn          | 01/31/2024 |    | 19:09  | 2-7    | .286 | 0-0        | .000 | 0-0         | .000  | 0        | 0   | 0   | 1.1 | 0  | 1  | 0  | 0   | 1   | 4   | 3.7 |
| Totals             |            | 3  | 311:45 | 26-85  | .306 | 10-46      | .217 | 8-13        | .615  | 5        | 16  | 21  | 1.1 | 21 | 31 | 17 | 1   | 5   | 70  | 3.7 |

Player Averages

| Games Played | Minutes/game | Points/game | FG Pct | 3FG Pct | FT Pct | Rebounds/game | Assists/game | Turnovers/game | Assist/Turnover ratio | Steals/game | Blocks/game |
|--------------|--------------|-------------|--------|---------|--------|---------------|--------------|----------------|-----------------------|-------------|-------------|
| 19           | 16.4         | 3.7         | 30.6   | 21.7    | 61.5   | 1.1           | 1.6          | 0.9            | 1.8                   | 0.3         | 0.1         |



ISAIAH WEST

4

Freshman // Guard  
6'2" // 190  
Springfield, Tenn.  
Goodpasture Christian

TOP GAMES OF 2023-24

12 pts, 5-8 FG  
vs. Central Ark. (11/17/23)

|         |       |       |          | Field Goals |      | 3-Point  |      | F-Throws |      | Rebounds |     |     |     |       |   |    |     |     |     | Scoring |  |
|---------|-------|-------|----------|-------------|------|----------|------|----------|------|----------|-----|-----|-----|-------|---|----|-----|-----|-----|---------|--|
| SEASON  | TEAM  | GP-GS | MIN/AVG  | FG-FGA      | FG%  | 3FG-3FGA | 3FG% | FT-FTA   | FT%  | OFF      | DEF | TOT | AVG | PF-FO | A | TO | BLK | STL | PTS | AVG     |  |
| 2023-24 | Vandy | 13-4  | 170/13.0 | 17-35       | .486 | 4-15     | .267 | 3-10     | .300 | 1        | 13  | 14  | 1.1 | 14-0  | 8 | 12 | 1   | 3   | 41  | 3.2     |  |
| TOTAL   |       | 13-4  | 170/13.0 | 17-35       | .486 | 4-15     | .267 | 3-10     | .300 | 1        | 13  | 14  | 1.1 | 14-0  | 8 | 12 | 1   | 3   | 41  | 3.2     |  |

Single Game Highs

| Statistic    | Value |   |
|--------------|-------|---|
| Points       | 12    | vs Central Ark. 11/17/23  |
| Rebounds     | 3     | vs Western Caro. 12/19/23, at Memphis 12/23/23, vs Arizona St. 11/24/23       |
| Assists      | 3     | vs Boston College 11/29/23  |
| Steals       | 1     | vs USC Upstate 11/10/23, vs UNC Greensboro 11/14/23, vs Central Ark. 11/17/23 |
| Blocks       | 1     | vs Auburn 01/17/24  |
| FG Made      | 5     | vs Central Ark. 11/17/23  |
| FG Attempts  | 8     | vs USC Upstate 11/10/23, vs Central Ark. 11/17/23                             |
| 3FG Made     | 2     | vs UNC Greensboro 11/14/23  |
| 3FG Attempts | 4     | vs USC Upstate 11/10/23, vs UNC Greensboro 11/14/23                           |
| FT Made      | 1     | vs Presbyterian 11/07/23, vs Central Ark. 11/17/23, vs NC State 11/23/23      |
| FT Attempts  | 6     | vs Central Ark. 11/17/23  |

| Opponent           | Date       | GS | MIN    | Total  |       | 3-Pointers |       | Free throws |      | Rebounds |     |     |     | PF |    |     |     | PTS | AVG |     |
|--------------------|------------|----|--------|--------|-------|------------|-------|-------------|------|----------|-----|-----|-----|----|----|-----|-----|-----|-----|-----|
|                    |            |    |        | FG-FGA | PCT   | 3FG-3FGA   | PCT   | FT-FTA      | PCT  | OFF      | DEF | TOT | AVG | A  | TO | BLK | STL |     |     |     |
| Presbyterian       | 11/07/2023 |    | 08:06  | 1-1    | 1.000 | 0-0        | .000  | 1-2         | .500 | 0        | 0   | 0   | 0.0 | 1  | 1  | 0   | 0   | 3   | 3.0 |     |
| USC Upstate        | 11/10/2023 | *  | 31:26  | 3-8    | .375  | 0-4        | .000  | 0-0         | .000 | 0        | 2   | 2   | 1.0 | 1  | 1  | 2   | 0   | 1   | 6   | 4.5 |
| UNC Greensboro     | 11/14/2023 | *  | 19:11  | 2-4    | .500  | 2-4        | .500  | 0-0         | .000 | 0        | 0   | 0   | 0.7 | 1  | 0  | 2   | 0   | 1   | 6   | 5.0 |
| Central Ark.       | 11/17/2023 | *  | 24:40  | 5-8    | .625  | 1-3        | .333  | 1-6         | .167 | 0        | 2   | 2   | 1.0 | 1  | 1  | 1   | 0   | 1   | 12  | 6.8 |
| vs NC State        | 11/23/2023 |    | 05:44  | 0-0    | .000  | 0-0        | .000  | 1-2         | .500 | 0        | 0   | 0   | 0.8 | 0  | 0  | 1   | 0   | 0   | 1   | 5.6 |
| vs Arizona St.     | 11/24/2023 |    | 10:01  | 1-3    | .333  | 0-1        | .000  | 0-0         | .000 | 0        | 3   | 3   | 1.2 | 2  | 2  | 0   | 0   | 0   | 2   | 5.0 |
| Boston College     | 11/29/2023 |    | 15:50  | 0-1    | .000  | 0-0        | .000  | 0-0         | .000 | 0        | 0   | 0   | 1.0 | 1  | 3  | 0   | 0   | 0   | 0   | 4.3 |
| San Francisco      | 12/06/2023 |    | 03:41  | 0-0    | .000  | 0-0        | .000  | 0-0         | .000 | 0        | 0   | 0   | 0.9 | 0  | 0  | 0   | 0   | 0   | 0   | 3.8 |
| vs Texas Tech      | 12/16/2023 |    | 09:47  | 2-2    | 1.000 | 1-1        | 1.000 | 0-0         | .000 | 0        | 0   | 0   | 0.8 | 3  | 0  | 1   | 0   | 0   | 5   | 3.9 |
| Western Caro.      | 12/19/2023 | *  | 11:32  | 0-0    | .000  | 0-0        | .000  | 0-0         | .000 | 0        | 3   | 3   | 1.0 | 1  | 0  | 2   | 0   | 0   | 0   | 3.5 |
| at Memphis         | 12/23/2023 |    | 15:21  | 2-6    | .333  | 0-2        | .000  | 0-0         | .000 | 1        | 2   | 3   | 1.2 | 2  | 0  | 1   | 0   | 0   | 4   | 3.5 |
| Auburn             | 01/17/2024 |    | 09:22  | 1-2    | .500  | 0-0        | .000  | 0-0         | .000 | 0        | 0   | 0   | 1.1 | 0  | 0  | 2   | 1   | 0   | 2   | 3.4 |
| at Mississippi St. | 01/20/2024 |    | 04:52  | 0-0    | .000  | 0-0        | .000  | 0-0         | .000 | 0        | 1   | 1   | 1.1 | 1  | 0  | 0   | 0   | 0   | 0   | 3.2 |
| Totals             |            | 4  | 169:33 | 17-35  | .486  | 4-15       | .267  | 3-10        | .300 | 1        | 13  | 14  | 1.1 | 14 | 8  | 12  | 1   | 3   | 41  | 3.2 |

Player Averages

| Games Played | Minutes/ game | Points/ game | FG Pct | 3FG Pct | FT Pct | Rebounds/ game | Assists/ game | Turnovers/ game | Assist/Turnover ratio | Steals/ game | Blocks/ game |
|--------------|---------------|--------------|--------|---------|--------|----------------|---------------|-----------------|-----------------------|--------------|--------------|
| 13           | 13.0          | 3.2          | 48.6   | 26.7    | 30.0   | 1.1            | 0.6           | 0.9             | 0.7                   | 0.2          | 0.1          |





EZRA MANJON

5

5th-Year Sr. // Guard  
6'0" // 170  
Antioch, Calif.  
UC Davis  
mon-YOWN

TOP GAMES OF 2023-24

23 pts, 5 ast, 0 turn  
vs. Dartmouth (12/30/23)

22 pts, 4 ast  
at 23 Memphis (12/23/23)

24 pts, 6 reb, 4 ast  
vs. UNCG (11/14/23)

16 pts, 7 ast, 6 reb  
vs. USC Upstate (11/10/23)

|                 |       |         |           | Field Goals |      | 3-Point  |      | F-Throws |      | Rebounds |     |     |     |       |     |     |     |     |      |      |  | Scoring |  |
|-----------------|-------|---------|-----------|-------------|------|----------|------|----------|------|----------|-----|-----|-----|-------|-----|-----|-----|-----|------|------|--|---------|--|
| SEASON          | TEAM  | GP-GS   | MIN/AVG   | FG-FGA      | FG%  | 3FG-3FGA | 3FG% | FT-FTA   | FT%  | OFF      | DEF | TOT | AVG | PF-FO | A   | TO  | BLK | STL | PTS  | AVG  |  |         |  |
| 2019-20         | UCD   | 32-32   | 982/30.7  | 149-328     | .454 | 17-44    | .386 | 73-96    | .760 | 18       | 83  | 101 | 3.2 | 65-1  | 130 | 63  | 4   | 24  | 388  | 12.1 |  |         |  |
| 2020-21         | UCD   | 18-18   | 616/34.2  | 99-234      | .423 | 9-40     | .225 | 73-84    | .869 | 10       | 35  | 45  | 2.5 | 36-0  | 59  | 42  | 3   | 16  | 280  | 15.6 |  |         |  |
| 2021-22         | UCD   | 24-24   | 804/33.5  | 147-342     | .430 | 8-40     | .200 | 58-81    | .716 | 18       | 68  | 86  | 3.6 | 47-1  | 81  | 62  | 8   | 23  | 360  | 15.0 |  |         |  |
| 2022-23         | Vandy | 37-25   | 1055/28.5 | 152-313     | .486 | 9-36     | .250 | 74-102   | .725 | 23       | 77  | 100 | 2.7 | 70-1  | 140 | 54  | 9   | 34  | 387  | 10.5 |  |         |  |
| 2023-24         | Vandy | 18-18   | 555/30.8  | 89-199      | .447 | 9-28     | .321 | 75-89    | .843 | 7        | 51  | 58  | 3.2 | 25-0  | 60  | 38  | 3   | 19  | 262  | 14.6 |  |         |  |
| TOTAL FOR Vandy |       | 55-43   | 1610/29.3 | 241-512     | .471 | 18-64    | .281 | 149-191  | .780 | 30       | 128 | 158 | 2.9 | 95-1  | 200 | 92  | 12  | 53  | 649  | 11.8 |  |         |  |
| TOTAL           |       | 129-117 | 4012/31.1 | 636-1416    | .449 | 52-188   | .277 | 353-452  | .781 | 76       | 314 | 390 | 3.0 | 243-3 | 470 | 259 | 27  | 116 | 1677 | 13.0 |  |         |  |

Single Game Highs

| Statistic    | Value |  |
|--------------|-------|--|
| Points       | 27    | at Oregon St. 12/14/21   |
| Rebounds     | 8     | at Utah St. 11/09/21, vs Portland 12/22/21                                     |
| Assists      | 9     | at Temple 11/15/22   |
| Steals       | 4     | vs Academy of Art 11/28/21, vs Pittsburgh 12/07/22                             |
| Blocks       | 2     | 4 times  |
| FG Made      | 11    | vs Cal St. Fullerton 01/22/20, at Oregon St. 12/14/21                          |
| FG Attempts  | 21    | vs UC Santa Barbara 01/30/21, vs Portland 12/22/21, vs Long Beach St. 01/29/22 |
| 3FG Made     | 3     | at CSUN 01/18/20, vs Eastern Wash. 11/12/21, vs Dartmouth 12/30/23             |
| 3FG Attempts | 6     | vs Eastern Wash. 11/12/21  |
| FT Made      | 15    | vs Nicholls 11/25/20   |
| FT Attempts  | 19    | vs Nicholls 11/25/20   |

| Opponent           | Date       | GS | MIN   | Total  |        | 3-Pointers |       | Free throws |       | Rebounds |     |     |     | PF  | A  | TO | BLK | STL | PTS | AVG  |      |
|--------------------|------------|----|-------|--------|--------|------------|-------|-------------|-------|----------|-----|-----|-----|-----|----|----|-----|-----|-----|------|------|
|                    |            |    |       | FG-FGA | PCT    | 3FG-3FGA   | PCT   | FT-FTA      | PCT   | OFF      | DEF | TOT | AVG |     |    |    |     |     |     |      |      |
| Presbyterian       | 11/07/2023 | *  | 23:47 | 5-12   | .417   | 2-5        | .400  | 7-10        | .700  | 2        | 1   | 3   | 3.0 | 2   | 1  | 1  | 0   | 3   | 19  | 19.0 |      |
| USC Upstate        | 11/10/2023 | *  | 35:05 | 4-6    | .667   | 0-0        | .000  | 8-8         | 1.000 | 1        | 5   | 6   | 4.5 | 1   | 7  | 2  | 0   | 1   | 16  | 17.5 |      |
| UNC Greensboro     | 11/14/2023 | *  | 32:15 | 5-11   | .455   | 2-2        | 1.000 | 12-12       | 1.000 | 0        | 6   | 6   | 5.0 | 0   | 4  | 2  | 0   | 0   | 24  | 19.7 |      |
| Central Ark.       | 11/17/2023 | *  | 27:47 | 6-13   | .462   | 0-3        | .000  | 4-4         | 1.000 | 0        | 4   | 4   | 4.8 | 1   | 4  | 3  | 0   | 3   | 16  | 18.8 |      |
| Boston College     | 11/29/2023 | *  | 29:30 | 5-10   | .500   | 0-0        | .000  | 6-6         | 1.000 | 0        | 2   | 2   | 4.2 | 1   | 2  | 5  | 0   | 0   | 16  | 18.2 |      |
| Alabama A&M        | 12/02/2023 | *  | 27:12 | 4-8    | .500   | 1-3        | .333  | 3-4         | .750  | 0        | 3   | 3   | 4.0 | 2   | 7  | 1  | 0   | 2   | 12  | 17.2 |      |
| San Francisco      | 12/06/2023 | *  | 31:46 | 5-14   | .357   | 0-2        | .000  | 0-0         | .000  | 0        | 1   | 1   | 3.6 | 1   | 2  | 2  | 0   | 1   | 10  | 16.1 |      |
| vs Texas Tech      | 12/16/2023 | *  | 30:53 | 3-7    | .429   | 0-0        | .000  | 0-2         | .000  | 0        | 2   | 2   | 3.4 | 3   | 5  | 2  | 0   | 0   | 6   | 14.9 |      |
| Western Caro.      | 12/19/2023 | *  | 29:35 | 7-18   | .389   | 0-1        | .000  | 4-4         | 1.000 | 0        | 4   | 4   | 3.4 | 1   | 2  | 1  | 0   | 2   | 18  | 15.2 |      |
| at Memphis         | 12/23/2023 | *  | 30:16 | 7-11   | .636   | 1-2        | .500  | 7-8         | .875  | 0        | 0   | 0   | 3.1 | 2   | 4  | 3  | 0   | 1   | 22  | 15.9 |      |
| Dartmouth          | 12/30/2023 | *  | 34:51 | 9-17   | .529   | 3-4        | .750  | 2-2         | 1.000 | 0        | 2   | 2   | 3.0 | 0   | 5  | 0  | 0   | 1   | 23  | 16.5 |      |
| Alabama            | 01/06/2024 | *  | 27:12 | 5-11   | .455   | 0-2        | .000  | 6-6         | 1.000 | 0        | 1   | 1   | 2.8 | 0   | 0  | 1  | 0   | 2   | 16  | 16.5 |      |
| at LSU             | 01/09/2024 | *  | 30:50 | 8-13   | .615   | 0-1        | .000  | 3-4         | .750  | 0        | 3   | 3   | 2.8 | 4   | 3  | 2  | 0   | 2   | 19  | 16.7 |      |
| at Ole Miss        | 01/13/2024 | *  | 34:35 | 4-11   | .364   | 0-0        | .000  | 3-4         | .750  | 1        | 4   | 5   | 3.0 | 2   | 1  | 2  | 2   | 0   | 11  | 16.3 |      |
| Auburn             | 01/17/2024 | *  | 33:46 | 5-12   | .417   | 0-1        | .000  | 2-4         | .500  | 1        | 4   | 5   | 3.1 | 1   | 1  | 4  | 0   | 1   | 12  | 16.0 |      |
| at Mississippi St. | 01/20/2024 | *  | 33:08 | 1-3    | .333   | 0-0        | .000  | 1-2         | .500  | 1        | 1   | 2   | 3.1 | 0   | 5  | 3  | 1   | 0   | 3   | 15.2 |      |
| Tennessee          | 01/27/2024 | *  | 32:42 | 5-14   | .357   | 0-1        | .000  | 4-4         | 1.000 | 0        | 5   | 5   | 3.2 | 2   | 3  | 3  | 0   | 0   | 14  | 15.1 |      |
| at Auburn          | 01/31/2024 | *  | 29:31 | 1-8    | .125   | 0-1        | .000  | 3-5         | .600  | 1        | 3   | 4   | 3.2 | 2   | 4  | 1  | 0   | 0   | 5   | 14.6 |      |
| Totals             |            |    | 18    | 554:41 | 89-199 | .447       | 9-28  | .321        | 75-89 | .843     | 7   | 51  | 58  | 3.2 | 25 | 60 | 38  | 3   | 19  | 262  | 14.6 |

Player Averages

| Games Played | Minutes/ game | Points/ game | FG Pct | 3FG Pct | FT Pct | Rebounds/ game | Assists/ game | Turnovers/ game | Assist/Turnover ratio | Steals/ game | Blocks/ game |
|--------------|---------------|--------------|--------|---------|--------|----------------|---------------|-----------------|-----------------------|--------------|--------------|
| 18           | 30.8          | 14.6         | 44.7   | 32.1    | 84.3   | 3.2            | 3.3           | 2.1             | 1.6                   | 1.1          | 0.2          |



JORDAN WILLIAMS

10

Sophomore // Guard  
6'2" // 205  
Houston, Texas  
Texas A&M

TOP GAMES OF 2023-24

6 pts, 2 ast, blk, stl  
vs. Alabama (1/6/24)

5 pts, 3 reb, 2 blk  
at 23 Memphis (12/23/23)

|         |       |       |          | Field Goals |      | 3-Point  |      | F-Throws |      | Rebounds |     |     |     |       |    |    |     |     | Scoring |     |
|---------|-------|-------|----------|-------------|------|----------|------|----------|------|----------|-----|-----|-----|-------|----|----|-----|-----|---------|-----|
| SEASON  | TEAM  | GP-GS | MIN/AVG  | FG-FGA      | FG%  | 3FG-3FGA | 3FG% | FT-FTA   | FT%  | OFF      | DEF | TOT | AVG | PF-FO | A  | TO | BLK | STL | PTS     | AVG |
| 2023-24 | Vandy | 16-7  | 175/10.9 | 9-30        | .300 | 5-23     | .217 | 2-4      | .500 | 3        | 16  | 19  | 1.2 | 21-0  | 12 | 8  | 3   | 5   | 25      | 1.6 |
| TOTAL   |       | 16-7  | 175/10.9 | 9-30        | .300 | 5-23     | .217 | 2-4      | .500 | 3        | 16  | 19  | 1.2 | 21-0  | 12 | 8  | 3   | 5   | 25      | 1.6 |

Single Game Highs

| Statistic    | Value |   |
|--------------|-------|---|
| Points       | 6     | vs Alabama 01/06/24   |
| Rebounds     | 4     | vs Western Caro. 12/19/23                                       |
| Assists      | 3     | vs NC State 11/23/23  |
| Steals       | 2     | vs Western Caro. 12/19/23, at Auburn 01/31/24                   |
| Blocks       | 2     | at Memphis 12/23/23   |
| FG Made      | 2     | at Memphis 12/23/23, vs Dartmouth 12/30/23, vs Alabama 01/06/24 |
| FG Attempts  | 5     | vs Alabama 01/06/24   |
| 3FG Made     | 2     | vs Alabama 01/06/24   |
| 3FG Attempts | 4     | vs Alabama 01/06/24   |
| FT Made      | 2     | vs NC State 11/23/23  |
| FT Attempts  | 2     | vs NC State 11/23/23, at Memphis 12/23/23                       |

| Opponent           | Date       | GS | MIN    | Total  |      | 3-Pointers |      | Free throws |       | Rebounds |     |     |     |    |    |    |     |     |     |     |
|--------------------|------------|----|--------|--------|------|------------|------|-------------|-------|----------|-----|-----|-----|----|----|----|-----|-----|-----|-----|
|                    |            |    |        | FG-FGA | PCT  | 3FG-3FGA   | PCT  | FT-FTA      | PCT   | OFF      | DEF | TOT | AVG | PF | A  | TO | BLK | STL | PTS | AVG |
| Presbyterian       | 11/07/2023 |    | 04:56  | 0-0    | .000 | 0-0        | .000 | 0-0         | .000  | 0        | 0   | 0   | 0.0 | 1  | 0  | 1  | 0   | 0   | 0   | 0.0 |
| vs NC State        | 11/23/2023 |    | 09:21  | 1-2    | .500 | 0-1        | .000 | 2-2         | 1.000 | 0        | 1   | 1   | 0.5 | 2  | 3  | 2  | 0   | 0   | 4   | 2.0 |
| vs Arizona St.     | 11/24/2023 | *  | 12:26  | 0-3    | .000 | 0-2        | .000 | 0-0         | .000  | 0        | 0   | 0   | 0.3 | 0  | 1  | 0  | 0   | 0   | 0   | 1.3 |
| Boston College     | 11/29/2023 | *  | 04:36  | 0-0    | .000 | 0-0        | .000 | 0-0         | .000  | 0        | 0   | 0   | 0.3 | 1  | 0  | 0  | 0   | 0   | 0   | 1.0 |
| San Francisco      | 12/06/2023 |    | 04:33  | 0-0    | .000 | 0-0        | .000 | 0-0         | .000  | 0        | 1   | 1   | 0.4 | 1  | 1  | 0  | 0   | 0   | 0   | 0.8 |
| vs Texas Tech      | 12/16/2023 |    | 03:27  | 0-1    | .000 | 0-1        | .000 | 0-0         | .000  | 0        | 1   | 1   | 0.5 | 0  | 0  | 0  | 0   | 0   | 0   | 0.7 |
| Western Caro.      | 12/19/2023 |    | 17:27  | 1-4    | .250 | 0-2        | .000 | 0-0         | .000  | 2        | 2   | 4   | 1.0 | 2  | 1  | 0  | 0   | 2   | 2   | 0.9 |
| at Memphis         | 12/23/2023 | *  | 15:10  | 2-4    | .500 | 1-3        | .333 | 0-2         | .000  | 0        | 3   | 3   | 1.3 | 0  | 1  | 1  | 2   | 0   | 5   | 1.4 |
| Dartmouth          | 12/30/2023 | *  | 21:24  | 2-3    | .667 | 1-2        | .500 | 0-0         | .000  | 0        | 2   | 2   | 1.3 | 2  | 0  | 1  | 0   | 0   | 5   | 1.8 |
| Alabama            | 01/06/2024 | *  | 22:12  | 2-5    | .400 | 2-4        | .500 | 0-0         | .000  | 0        | 0   | 0   | 1.2 | 3  | 2  | 0  | 1   | 1   | 6   | 2.2 |
| at LSU             | 01/09/2024 | *  | 10:14  | 0-1    | .000 | 0-1        | .000 | 0-0         | .000  | 0        | 1   | 1   | 1.2 | 1  | 1  | 1  | 0   | 0   | 0   | 2.0 |
| at Ole Miss        | 01/13/2024 |    | 07:22  | 0-1    | .000 | 0-1        | .000 | 0-0         | .000  | 0        | 1   | 1   | 1.2 | 2  | 2  | 0  | 0   | 0   | 0   | 1.8 |
| Auburn             | 01/17/2024 |    | 02:41  | 0-0    | .000 | 0-0        | .000 | 0-0         | .000  | 0        | 0   | 0   | 1.1 | 1  | 0  | 0  | 0   | 0   | 0   | 1.7 |
| at Mississippi St. | 01/20/2024 |    | 06:21  | 1-3    | .333 | 1-3        | .333 | 0-0         | .000  | 0        | 1   | 1   | 1.1 | 0  | 0  | 1  | 0   | 0   | 3   | 1.8 |
| Tennessee          | 01/27/2024 |    | 10:26  | 0-2    | .000 | 0-2        | .000 | 0-0         | .000  | 1        | 0   | 1   | 1.1 | 1  | 0  | 0  | 0   | 0   | 0   | 1.7 |
| at Auburn          | 01/31/2024 | *  | 22:30  | 0-1    | .000 | 0-1        | .000 | 0-0         | .000  | 0        | 3   | 3   | 1.2 | 4  | 0  | 1  | 0   | 2   | 0   | 1.6 |
| Totals             |            | 7  | 175:06 | 9-30   | .300 | 5-23       | .217 | 2-4         | .500  | 3        | 16  | 19  | 1.2 | 21 | 12 | 8  | 3   | 5   | 25  | 1.6 |

Player Averages

| Games Played | Minutes/ game | Points/ game | FG Pct | 3FG Pct | FT Pct | Rebounds/ game | Assists/ game | Turnovers/ game | Assist/Turnover ratio | Steals/ game | Blocks/ game |
|--------------|---------------|--------------|--------|---------|--------|----------------|---------------|-----------------|-----------------------|--------------|--------------|
| 16           | 10.9          | 1.6          | 30.0   | 21.7    | 50.0   | 1.2            | 0.8           | 0.5             | 1.5                   | 0.3          | 0.2          |



EVAN TAYLOR

12

Graduate // G/F  
6'5" // 205  
Glen Ellyn, Ill.  
Lehigh

TOP GAMES OF 2023-24

25 pts  
vs. Arizona State (11/24/23)

14 pts, 3 rebs  
at Auburn (1/31/24)

12 pts, 5 reb  
vs. UNCG (11/14/23)

|                 |        |         |           | Field Goals |      | 3-Point  |      | F-Throws |      | Rebounds |     |     |     |       |     |     |     |     |      |      |  | Scoring |  |
|-----------------|--------|---------|-----------|-------------|------|----------|------|----------|------|----------|-----|-----|-----|-------|-----|-----|-----|-----|------|------|--|---------|--|
| SEASON          | TEAM   | GP-GS   | MIN/AVG   | FG-FGA      | FG%  | 3FG-3FGA | 3FG% | FT-FTA   | FT%  | OFF      | DEF | TOT | AVG | PF-FO | A   | TO  | BLK | STL | PTS  | AVG  |  |         |  |
| 2019-20         | Lehigh | 28-17   | 681/24.3  | 76-181      | .420 | 21-58    | .362 | 41-51    | .804 | 17       | 82  | 99  | 3.5 | 64-2  | 22  | 36  | 8   | 14  | 214  | 7.6  |  |         |  |
| 2020-21         | Lehigh | 15-10   | 405/27.0  | 50-116      | .431 | 11-29    | .379 | 20-35    | .571 | 22       | 87  | 109 | 7.3 | 36-1  | 24  | 15  | 6   | 10  | 131  | 8.7  |  |         |  |
| 2021-22         | Lehigh | 32-31   | 954/29.8  | 154-326     | .472 | 54-131   | .412 | 54-73    | .740 | 18       | 166 | 184 | 5.8 | 77-2  | 43  | 44  | 31  | 26  | 416  | 13.0 |  |         |  |
| 2022-23         | Lehigh | 30-30   | 930/31.0  | 151-355     | .425 | 55-128   | .430 | 68-85    | .800 | 23       | 172 | 195 | 6.5 | 58-1  | 33  | 39  | 14  | 15  | 425  | 14.2 |  |         |  |
| 2023-24         | Vandy  | 20-14   | 463/23.2  | 54-155      | .348 | 28-92    | .304 | 27-33    | .818 | 16       | 58  | 74  | 3.7 | 38-1  | 6   | 12  | 5   | 13  | 163  | 8.2  |  |         |  |
| TOTAL FOR Vandy |        | 20-14   | 463/23.2  | 54-155      | .348 | 28-92    | .304 | 27-33    | .818 | 16       | 58  | 74  | 3.7 | 38-1  | 6   | 12  | 5   | 13  | 163  | 8.2  |  |         |  |
| TOTAL           |        | 125-102 | 3434/27.5 | 485-1133    | .428 | 169-438  | .386 | 210-277  | .758 | 96       | 565 | 661 | 5.3 | 273-7 | 128 | 146 | 64  | 78  | 1349 | 10.8 |  |         |  |

Single Game Highs

| Statistic    | Value |   |
|--------------|-------|---|
| Points       | 26    | vs Boston U. 02/05/22, at Navy 01/08/23                                 |
| Rebounds     | 15    | at Lafayette 02/27/21   |
| Assists      | 4     | vs Loyola Maryland 01/05/20, vs Lafayette 02/28/21, vs Colgate 01/04/22 |
| Steals       | 3     | 6 times   |
| Blocks       | 3     | vs UMES 12/04/21, vs Loyola Maryland 01/16/22, at Navy 01/19/22         |
| FG Made      | 11    | vs Boston U. 02/05/22, at Navy 01/08/23                                 |
| FG Attempts  | 19    | vs Navy 02/15/23  |
| 3FG Made     | 5     | at Bucknell 01/13/22, vs Monmouth 11/27/22                              |
| 3FG Attempts | 11    | vs Army West Point 03/03/22, vs Presbyterian 11/07/23                   |
| FT Made      | 8     | at Holy Cross 01/25/23  |
| FT Attempts  | 10    | at Loyola Maryland 02/21/21, at Holy Cross 01/25/23                     |

| Opponent           | Date       | GS | MIN   | Total  |        | 3-Pointers |       | Free throws |       | Rebounds |     |     |     |     |    |    |     |     |     |      |     |
|--------------------|------------|----|-------|--------|--------|------------|-------|-------------|-------|----------|-----|-----|-----|-----|----|----|-----|-----|-----|------|-----|
|                    |            |    |       | FG-FGA | PCT    | 3FG-3FGA   | PCT   | FT-FTA      | PCT   | OFF      | DEF | TOT | AVG | PF  | A  | TO | BLK | STL | PTS | AVG  |     |
| Presbyterian       | 11/07/2023 | *  | 25:55 | 3-12   | .250   | 3-11       | .273  | 0-0         | .000  | 0        | 3   | 3   | 3.0 | 2   | 0  | 1  | 1   | 3   | 9   | 9.0  |     |
| USC Upstate        | 11/10/2023 | *  | 20:54 | 2-6    | .333   | 1-3        | .333  | 2-2         | 1.000 | 1        | 4   | 5   | 4.0 | 2   | 0  | 1  | 0   | 0   | 7   | 8.0  |     |
| UNC Greensboro     | 11/14/2023 | *  | 25:53 | 3-6    | .500   | 2-4        | .500  | 4-4         | 1.000 | 2        | 3   | 5   | 4.3 | 0   | 1  | 1  | 0   | 0   | 12  | 9.3  |     |
| Central Ark.       | 11/17/2023 | *  | 30:43 | 5-11   | .455   | 3-8        | .375  | 1-2         | .500  | 0        | 3   | 3   | 4.0 | 1   | 0  | 0  | 0   | 1   | 14  | 10.5 |     |
| vs NC State        | 11/23/2023 | *  | 28:12 | 4-8    | .500   | 1-2        | .500  | 0-0         | .000  | 1        | 2   | 3   | 3.8 | 1   | 1  | 0  | 2   | 1   | 9   | 10.2 |     |
| vs Arizona St.     | 11/24/2023 | *  | 33:24 | 8-17   | .471   | 3-8        | .375  | 6-7         | .857  | 0        | 1   | 1   | 3.3 | 3   | 0  | 1  | 1   | 0   | 25  | 12.7 |     |
| Boston College     | 11/29/2023 | *  | 24:07 | 0-6    | .000   | 0-3        | .000  | 3-4         | .750  | 1        | 2   | 3   | 3.3 | 1   | 0  | 0  | 0   | 0   | 3   | 11.3 |     |
| Alabama A&M        | 12/02/2023 | *  | 22:55 | 2-8    | .250   | 2-5        | .400  | 4-4         | 1.000 | 1        | 1   | 2   | 3.1 | 0   | 1  | 1  | 0   | 0   | 10  | 11.1 |     |
| San Francisco      | 12/06/2023 | *  | 26:22 | 2-5    | .400   | 1-3        | .333  | 0-2         | .000  | 0        | 4   | 4   | 3.2 | 2   | 0  | 0  | 0   | 1   | 5   | 10.4 |     |
| vs Texas Tech      | 12/16/2023 | *  | 30:41 | 3-11   | .273   | 1-6        | .167  | 0-0         | .000  | 2        | 2   | 4   | 3.3 | 2   | 1  | 2  | 0   | 0   | 7   | 10.1 |     |
| Western Caro.      | 12/19/2023 | *  | 24:24 | 3-10   | .300   | 0-4        | .000  | 2-2         | 1.000 | 3        | 5   | 8   | 3.7 | 3   | 0  | 1  | 1   | 1   | 8   | 9.9  |     |
| at Memphis         | 12/23/2023 |    | 22:36 | 2-6    | .333   | 1-4        | .250  | 0-0         | .000  | 0        | 6   | 6   | 3.9 | 3   | 0  | 0  | 0   | 3   | 5   | 9.5  |     |
| Dartmouth          | 12/30/2023 |    | 21:35 | 2-5    | .400   | 0-3        | .000  | 0-0         | .000  | 0        | 5   | 5   | 4.0 | 2   | 0  | 0  | 0   | 0   | 4   | 9.1  |     |
| Alabama            | 01/06/2024 |    | 21:33 | 1-7    | .143   | 0-3        | .000  | 0-0         | .000  | 1        | 5   | 6   | 4.1 | 4   | 0  | 0  | 0   | 1   | 2   | 8.6  |     |
| at LSU             | 01/09/2024 |    | 15:59 | 3-8    | .375   | 2-5        | .400  | 2-2         | 1.000 | 0        | 3   | 3   | 4.1 | 1   | 1  | 1  | 0   | 0   | 10  | 8.7  |     |
| at Ole Miss        | 01/13/2024 |    | 09:20 | 1-5    | .200   | 0-2        | .000  | 0-0         | .000  | 0        | 1   | 1   | 3.9 | 1   | 0  | 0  | 0   | 0   | 2   | 8.3  |     |
| Auburn             | 01/17/2024 |    | 02:35 | 0-0    | .000   | 0-0        | .000  | 0-0         | .000  | 0        | 0   | 0   | 3.6 | 0   | 0  | 0  | 0   | 0   | 0   | 7.8  |     |
| at Mississippi St. | 01/20/2024 | *  | 27:16 | 4-7    | .571   | 3-5        | .600  | 0-0         | .000  | 1        | 3   | 4   | 3.7 | 2   | 1  | 1  | 0   | 1   | 11  | 7.9  |     |
| Tennessee          | 01/27/2024 | *  | 26:02 | 2-8    | .250   | 2-6        | .333  | 0-0         | .000  | 3        | 2   | 5   | 3.7 | 3   | 0  | 0  | 0   | 1   | 6   | 7.8  |     |
| at Auburn          | 01/31/2024 | *  | 22:55 | 4-9    | .444   | 3-7        | .429  | 3-4         | .750  | 0        | 3   | 3   | 3.7 | 5   | 0  | 2  | 0   | 0   | 14  | 8.2  |     |
| Totals             |            |    | 14    | 463:22 | 54-155 | .348       | 28-92 | .304        | 27-33 | .818     | 16  | 58  | 74  | 3.7 | 38 | 6  | 12  | 5   | 13  | 163  | 8.2 |

Player Averages

| Games Played | Minutes/ game | Points/ game | FG Pct | 3FG Pct | FT Pct | Rebounds/ game | Assists/ game | Turnovers/ game | Assist/Turnover ratio | Steals/ game | Blocks/ game |
|--------------|---------------|--------------|--------|---------|--------|----------------|---------------|-----------------|-----------------------|--------------|--------------|
| 20           | 23.2          | 8.2          | 34.8   | 30.4    | 81.8   | 3.7            | 0.3           | 0.6             | 0.5                   | 0.7          | 0.3          |



MALIK PRESLEY

13

Freshman // G/F  
6'6" // 200  
San Marcos, Texas  
San Marcos

|         |       |       |         | Field Goals |      | 3-Point  |      | F-Throws |      | Rebounds |     |     |     |       |   |    |     |     |     | Scoring |  |
|---------|-------|-------|---------|-------------|------|----------|------|----------|------|----------|-----|-----|-----|-------|---|----|-----|-----|-----|---------|--|
| SEASON  | TEAM  | GP-GS | MIN/AVG | FG-FGA      | FG%  | 3FG-3FGA | 3FG% | FT-FTA   | FT%  | OFF      | DEF | TOT | AVG | PF-FO | A | TO | BLK | STL | PTS | AVG     |  |
| 2023-24 | Vandy | 9-0   | 88/9.8  | 3-11        | .273 | 0-3      | .000 | 4-8      | .500 | 9        | 8   | 17  | 1.9 | 8-0   | 6 | 3  | 0   | 5   | 10  | 1.1     |  |
| TOTAL   |       | 9-0   | 88/9.8  | 3-11        | .273 | 0-3      | .000 | 4-8      | .500 | 9        | 8   | 17  | 1.9 | 8-0   | 6 | 3  | 0   | 5   | 10  | 1.1     |  |

Single Game Highs

| Statistic    | Value |  |
|--------------|-------|--|
| Points       | 4     | vs Central Ark. 11/17/23   |
| Rebounds     | 5     | vs Texas Tech 12/16/23   |
| Assists      | 2     | vs UNC Greensboro 11/14/23, vs Arizona St. 11/24/23                        |
| Steals       | 3     | vs Texas Tech 12/16/23   |
| FG Made      | 1     | vs Presbyterian 11/07/23, vs Central Ark. 11/17/23, vs Texas Tech 12/16/23 |
| FG Attempts  | 3     | vs Presbyterian 11/07/23, vs Texas Tech 12/16/23                           |
| 3FG Attempts | 1     | vs Presbyterian 11/07/23, vs Alabama A&M 12/02/23, vs Arizona St. 11/24/23 |
| FT Made      | 2     | vs Central Ark. 11/17/23   |
| FT Attempts  | 4     | vs Central Ark. 11/17/23   |

TOP GAMES OF 2023-24

11 pts, 4 rebs

vs. Auburn(1/17/24)

|                    |            |    |        | Total  |       | 3-Pointers |       | Free throws |      | Rebounds |     |     |     |    |   |    |     |     |     |     |
|--------------------|------------|----|--------|--------|-------|------------|-------|-------------|------|----------|-----|-----|-----|----|---|----|-----|-----|-----|-----|
| Opponent           | Date       | GS | MIN    | FG-FGA | PCT   | 3FG-3FGA   | PCT   | FT-FTA      | PCT  | OFF      | DEF | TOT | AVG | PF | A | TO | BLK | STL | PTS | AVG |
| Presbyterian       | 11/07/2023 |    | 18:40  | 1-3    | .333  | 0-1        | .000  | 0-0         | .000 | 1        | 2   | 3   | 3.0 | 2  | 0 | 0  | 0   | 0   | 2   | 2.0 |
| USC Upstate        | 11/10/2023 |    | 04:25  | 0-0    | .000  | 0-0        | .000  | 0-0         | .000 | 1        | 1   | 2   | 2.5 | 0  | 0 | 0  | 0   | 0   | 0   | 1.0 |
| UNC Greensboro     | 11/14/2023 |    | 04:23  | 0-0    | .000  | 0-0        | .000  | 0-0         | .000 | 0        | 0   | 0   | 1.7 | 0  | 2 | 1  | 0   | 0   | 0   | 0.7 |
| Central Ark.       | 11/17/2023 |    | 09:17  | 1-2    | .500  | 0-0        | .000  | 2-4         | .500 | 1        | 1   | 2   | 1.8 | 0  | 0 | 1  | 0   | 0   | 4   | 1.5 |
| vs Arizona St.     | 11/24/2023 |    | 13:41  | 0-2    | .000  | 0-1        | .000  | 1-2         | .500 | 2        | 1   | 3   | 2.0 | 3  | 2 | 0  | 0   | 2   | 1   | 1.4 |
| Alabama A&M        | 12/02/2023 |    | 10:48  | 0-1    | .000  | 0-1        | .000  | 0-0         | .000 | 1        | 1   | 2   | 2.0 | 1  | 1 | 0  | 0   | 0   | 0   | 1.2 |
| San Francisco      | 12/06/2023 |    | 04:33  | 0-0    | .000  | 0-0        | .000  | 0-0         | .000 | 0        | 0   | 0   | 1.7 | 0  | 1 | 1  | 0   | 0   | 0   | 1.0 |
| vs Texas Tech      | 12/16/2023 |    | 19:31  | 1-3    | .333  | 0-0        | .000  | 1-2         | .500 | 3        | 2   | 5   | 2.1 | 1  | 0 | 0  | 0   | 3   | 3   | 1.3 |
| Western Caro.      | 12/19/2023 |    | 03:28  | 0-0    | .000  | 0-0        | .000  | 0-0         | .000 | 0        | 0   | 0   | 1.9 | 1  | 0 | 0  | 0   | 0   | 0   | 1.1 |
| Dartmouth          | 12/30/2023 |    | 00:59  | 0-0    | .000  | 0-0        | .000  | 0-0         | .000 | 0        | 0   | 0   | 1.7 | 0  | 0 | 0  | 0   | 0   | 0   | 1.0 |
| Alabama            | 01/06/2024 |    | 07:18  | 0-0    | .000  | 0-0        | .000  | 1-2         | .500 | 0        | 0   | 0   | 1.5 | 2  | 0 | 0  | 0   | 0   | 1   | 1.0 |
| at Ole Miss        | 01/13/2024 | *  | 23:14  | 1-3    | .333  | 0-1        | .000  | 0-0         | .000 | 2        | 2   | 4   | 1.8 | 2  | 2 | 0  | 0   | 1   | 2   | 1.1 |
| Auburn             | 01/17/2024 | *  | 21:32  | 3-3    | 1.000 | 1-1        | 1.000 | 4-7         | .571 | 4        | 0   | 4   | 1.9 | 3  | 0 | 0  | 0   | 0   | 11  | 1.8 |
| at Mississippi St. | 01/20/2024 |    | 13:22  | 0-1    | .000  | 0-0        | .000  | 0-2         | .000 | 0        | 0   | 0   | 1.8 | 0  | 0 | 1  | 0   | 0   | 0   | 1.7 |
| Tennessee          | 01/27/2024 |    | 02:17  | 0-0    | .000  | 0-0        | .000  | 0-0         | .000 | 0        | 0   | 0   | 1.7 | 0  | 0 | 0  | 0   | 0   | 0   | 1.6 |
| at Auburn          | 01/31/2024 |    | 10:56  | 0-0    | .000  | 0-0        | .000  | 0-0         | .000 | 0        | 0   | 0   | 1.6 | 1  | 0 | 0  | 0   | 0   | 0   | 1.5 |
| Totals             |            | 2  | 168:25 | 7-18   | .389  | 1-5        | .200  | 9-19        | .474 | 15       | 10  | 25  | 1.6 | 16 | 8 | 4  | 0   | 6   | 24  | 1.5 |

Player Averages

| Games Played | Minutes/ game | Points/ game | FG Pct | 3FG Pct | FT Pct | Rebounds/ game | Assists/ game | Turnovers/ game | Assist/Turnover ratio | Steals/ game | Blocks/ game |
|--------------|---------------|--------------|--------|---------|--------|----------------|---------------|-----------------|-----------------------|--------------|--------------|
| 16           | 10.5          | 1.5          | 38.9   | 20.0    | 47.4   | 1.6            | 0.5           | 0.3             | 2.0                   | 0.4          | 0.0          |





TASOS KAMATEROS

21

Grad // Forward  
6'8" // 240  
Athens, Greece  
Univ. of South Dakota  
TAH-sos kom-uh-TER-os

TOP GAMES OF 2023-24

12 pts, 4 reb  
at 23 Memphis (12/23/23)

21 pts, 7-8 FG, 4-5 3PT  
vs. USC Upstate (11/10/23)

|                 |       |        |           | Field Goals |      | 3-Point  |      | F-Throws |      | Rebounds |     |     |     |       |     |     |     |     |  |  | Scoring |      |
|-----------------|-------|--------|-----------|-------------|------|----------|------|----------|------|----------|-----|-----|-----|-------|-----|-----|-----|-----|--|--|---------|------|
| SEASON          | TEAM  | GP-GS  | MIN/AVG   | FG-FGA      | FG%  | 3FG-3FGA | 3FG% | FT-FTA   | FT%  | OFF      | DEF | TOT | AVG | PF-FO | A   | TO  | BLK | STL |  |  | PTS     | AVG  |
| 2019-20         | SD    | 13-0   | 78/6.0    | 13-21       | .619 | 1-4      | .250 | 7-10     | .700 | 7        | 12  | 19  | 1.5 | 16-0  | 3   | 1   | 1   | 1   |  |  | 34      | 2.6  |
| 2020-21         | SD    | 25-20  | 533/21.3  | 85-163      | .521 | 15-43    | .349 | 26-34    | .765 | 24       | 86  | 110 | 4.4 | 71-3  | 23  | 24  | 8   | 4   |  |  | 211     | 8.4  |
| 2021-22         | SD    | 31-30  | 848/27.3  | 129-282     | .457 | 54-144   | .375 | 44-51    | .863 | 27       | 142 | 169 | 5.5 | 83-1  | 62  | 43  | 12  | 10  |  |  | 356     | 11.5 |
| 2022-23         | SD    | 31-30  | 873/28.2  | 146-325     | .449 | 57-142   | .401 | 39-47    | .830 | 39       | 160 | 199 | 6.4 | 44-0  | 52  | 54  | 9   | 10  |  |  | 388     | 12.5 |
| 2023-24         | Vandy | 20-5   | 340/17.0  | 32-80       | .400 | 23-67    | .343 | 11-15    | .733 | 12       | 31  | 43  | 2.2 | 32-0  | 3   | 7   | 4   | 5   |  |  | 98      | 4.9  |
| TOTAL FOR Vandy |       | 20-5   | 340/17.0  | 32-80       | .400 | 23-67    | .343 | 11-15    | .733 | 12       | 31  | 43  | 2.2 | 32-0  | 3   | 7   | 4   | 5   |  |  | 98      | 4.9  |
| TOTAL           |       | 120-85 | 2672/22.3 | 405-871     | .465 | 150-400  | .375 | 127-157  | .809 | 109      | 431 | 540 | 4.5 | 246-4 | 143 | 129 | 34  | 30  |  |  | 1087    | 9.1  |

Single Game Highs

| Statistic    | Value |   |
|--------------|-------|---|
| Points       | 24    | vs Western Ill. 02/19/22, vs Kansas City 02/25/23                         |
| Rebounds     | 16    | at South Dakota St. 02/05/21  |
| Assists      | 8     | vs Omaha 01/15/22   |
| Steals       | 2     | 4 times   |
| Blocks       | 2     | at St. Thomas (MN) 01/22/22, vs St. Thomas (MN) 12/29/22, at LSU 01/09/24 |
| FG Made      | 9     | at Omaha 02/10/22, vs Kansas City 02/25/23                                |
| FG Attempts  | 19    | vs North Dakota 01/29/22  |
| 3FG Made     | 6     | vs Western Ill. 02/19/22  |
| 3FG Attempts | 10    | at St. Thomas (MN) 01/28/23   |
| FT Made      | 5     | at Western Ill. 01/23/21, vs Oral Roberts 12/20/21                        |
| FT Attempts  | 6     | vs Oral Roberts 12/20/21  |

|                    |            |    |        | Total  |       | 3-Pointers |       | Free throws |       | Rebounds |     |     |     |    |   |    |     |     |  |  |     |      |
|--------------------|------------|----|--------|--------|-------|------------|-------|-------------|-------|----------|-----|-----|-----|----|---|----|-----|-----|--|--|-----|------|
| Opponent           | Date       | GS | MIN    | FG-FGA | PCT   | 3FG-3FGA   | PCT   | FT-FTA      | PCT   | OFF      | DEF | TOT | AVG | PF | A | TO | BLK | STL |  |  | PTS | AVG  |
| Presbyterian       | 11/07/2023 | *  | 18:55  | 2-4    | .500  | 2-3        | .667  | 2-2         | 1.000 | 2        | 1   | 3   | 3.0 | 2  | 0 | 0  | 1   | 0   |  |  | 8   | 8.0  |
| USC Upstate        | 11/10/2023 |    | 25:12  | 7-8    | .875  | 4-5        | .800  | 3-4         | .750  | 0        | 3   | 3   | 3.0 | 3  | 0 | 0  | 0   | 0   |  |  | 21  | 14.5 |
| UNC Greensboro     | 11/14/2023 |    | 18:22  | 2-5    | .400  | 2-5        | .400  | 1-2         | .500  | 0        | 1   | 1   | 2.3 | 1  | 0 | 0  | 0   | 0   |  |  | 7   | 12.0 |
| Central Ark.       | 11/17/2023 |    | 17:06  | 0-3    | .000  | 0-3        | .000  | 0-0         | .000  | 0        | 1   | 1   | 2.0 | 0  | 1 | 1  | 0   | 0   |  |  | 0   | 9.0  |
| vs NC State        | 11/23/2023 |    | 12:28  | 0-2    | .000  | 0-2        | .000  | 0-0         | .000  | 2        | 1   | 3   | 2.2 | 1  | 0 | 1  | 0   | 0   |  |  | 0   | 7.2  |
| vs Arizona St.     | 11/24/2023 |    | 09:42  | 1-1    | 1.000 | 0-0        | .000  | 2-2         | 1.000 | 0        | 2   | 2   | 2.2 | 0  | 0 | 0  | 0   | 0   |  |  | 4   | 6.7  |
| Boston College     | 11/29/2023 |    | 16:17  | 3-7    | .429  | 2-6        | .333  | 0-0         | .000  | 0        | 0   | 0   | 1.9 | 2  | 0 | 0  | 0   | 0   |  |  | 8   | 6.9  |
| Alabama A&M        | 12/02/2023 |    | 11:59  | 1-1    | 1.000 | 1-1        | 1.000 | 1-1         | 1.000 | 0        | 1   | 1   | 1.8 | 1  | 0 | 0  | 0   | 0   |  |  | 4   | 6.5  |
| San Francisco      | 12/06/2023 |    | 17:12  | 3-6    | .500  | 3-6        | .500  | 0-0         | .000  | 0        | 1   | 1   | 1.7 | 3  | 0 | 0  | 0   | 1   |  |  | 9   | 6.8  |
| vs Texas Tech      | 12/16/2023 |    | 04:06  | 0-0    | .000  | 0-0        | .000  | 0-0         | .000  | 1        | 0   | 1   | 1.6 | 1  | 0 | 0  | 0   | 0   |  |  | 0   | 6.1  |
| Western Caro.      | 12/19/2023 |    | 15:27  | 3-5    | .600  | 1-2        | .500  | 1-2         | .500  | 0        | 1   | 1   | 1.5 | 1  | 0 | 0  | 0   | 0   |  |  | 8   | 6.3  |
| at Memphis         | 12/23/2023 | *  | 30:51  | 4-9    | .444  | 3-7        | .429  | 1-2         | .500  | 1        | 3   | 4   | 1.8 | 3  | 0 | 2  | 0   | 0   |  |  | 12  | 6.8  |
| Dartmouth          | 12/30/2023 | *  | 29:29  | 2-5    | .400  | 2-5        | .400  | 0-0         | .000  | 1        | 5   | 6   | 2.1 | 1  | 0 | 0  | 1   | 0   |  |  | 6   | 6.7  |
| Alabama            | 01/06/2024 | *  | 31:25  | 2-7    | .286  | 2-7        | .286  | 0-0         | .000  | 2        | 3   | 5   | 2.3 | 1  | 0 | 2  | 0   | 1   |  |  | 6   | 6.6  |
| at LSU             | 01/09/2024 | *  | 26:23  | 1-6    | .167  | 1-6        | .167  | 0-0         | .000  | 0        | 4   | 4   | 2.4 | 4  | 0 | 0  | 2   | 0   |  |  | 3   | 6.4  |
| at Ole Miss        | 01/13/2024 |    | 13:42  | 1-1    | 1.000 | 0-0        | .000  | 0-0         | .000  | 0        | 1   | 1   | 2.3 | 0  | 1 | 0  | 0   | 0   |  |  | 2   | 6.1  |
| Auburn             | 01/17/2024 |    | 10:32  | 0-4    | .000  | 0-4        | .000  | 0-0         | .000  | 1        | 0   | 1   | 2.2 | 1  | 0 | 0  | 0   | 0   |  |  | 0   | 5.8  |
| at Mississippi St. | 01/20/2024 |    | 06:51  | 0-2    | .000  | 0-2        | .000  | 0-0         | .000  | 0        | 2   | 2   | 2.2 | 3  | 0 | 1  | 0   | 1   |  |  | 0   | 5.4  |
| Tennessee          | 01/27/2024 |    | 13:10  | 0-1    | .000  | 0-1        | .000  | 0-0         | .000  | 1        | 0   | 1   | 2.2 | 3  | 1 | 0  | 0   | 1   |  |  | 0   | 5.2  |
| at Auburn          | 01/31/2024 |    | 10:40  | 0-3    | .000  | 0-2        | .000  | 0-0         | .000  | 1        | 1   | 2   | 2.2 | 1  | 0 | 0  | 0   | 1   |  |  | 0   | 4.9  |
| Totals             |            | 5  | 339:49 | 32-80  | .400  | 23-67      | .343  | 11-15       | .733  | 12       | 31  | 43  | 2.2 | 32 | 3 | 7  | 4   | 5   |  |  | 98  | 4.9  |

Player Averages

| Games Played | Minutes/ game | Points/ game | FG Pct | 3FG Pct | FT Pct | Rebounds/ game | Assists/ game | Turnovers/ game | Assist/Turnover ratio | Steals/ game | Blocks/ game |
|--------------|---------------|--------------|--------|---------|--------|----------------|---------------|-----------------|-----------------------|--------------|--------------|
| 20           | 17.0          | 4.9          | 40.0   | 34.3    | 73.3   | 2.2            | 0.2           | 0.4             | 0.4                   | 0.3          | 0.2          |



JASON RIVERA-TORRES

23

Freshman // G/F  
6'6" // 180  
Bronx, N.Y.  
John Marshall (Va.)

TOP GAMES OF 2023-24

20 pts, 6 reb, 2 stl, blk  
vs. Alabama (1/6/24)

14 pts, 4 stl  
vs. 13 Auburn (1/17/24)

12 pts, 4 reb, 3-of-6 3PT  
at 23 Memphis (12/23/23)

10 pts, 8 reb, 3 ast  
vs. Alabama A&M (12/2/23)

12 pts, 3-of-4 3PT  
vs. NC State (11/23/23)

|         |       |       |          | Field Goals |      | 3-Point  |      | F-Throws |      | Rebounds |     |     |     |       |    |    |     | Scoring |     |     |
|---------|-------|-------|----------|-------------|------|----------|------|----------|------|----------|-----|-----|-----|-------|----|----|-----|---------|-----|-----|
| SEASON  | TEAM  | GP-GS | MIN/AVG  | FG-FGA      | FG%  | 3FG-3FGA | 3FG% | FT-FTA   | FT%  | OFF      | DEF | TOT | AVG | PF-FO | A  | TO | BLK | STL     | PTS | AVG |
| 2023-24 | Vandy | 20-2  | 361/18.1 | 57-150      | .380 | 21-67    | .313 | 28-37    | .757 | 18       | 51  | 69  | 3.5 | 36-1  | 12 | 24 | 5   | 22      | 163 | 8.2 |
| TOTAL   |       | 20-2  | 361/18.1 | 57-150      | .380 | 21-67    | .313 | 28-37    | .757 | 18       | 51  | 69  | 3.5 | 36-1  | 12 | 24 | 5   | 22      | 163 | 8.2 |

Single Game Highs

| Statistic    | Value |   |
|--------------|-------|---|
| Points       | 20    | vs Alabama 01/06/24                               |
| Rebounds     | 8     | vs Alabama A&M 12/02/23                           |
| Assists      | 3     | vs Alabama A&M 12/02/23                           |
| Steals       | 4     | vs Auburn 01/17/24                                |
| Blocks       | 2     | vs Presbyterian 11/07/23                          |
| FG Made      | 8     | vs Alabama 01/06/24                               |
| FG Attempts  | 13    | vs Alabama 01/06/24, at Mississippi St. 01/20/24  |
| 3FG Made     | 3     | vs NC State 11/23/23, at Memphis 12/23/23         |
| 3FG Attempts | 7     | at Ole Miss 01/13/24, at Mississippi St. 01/20/24 |
| FT Made      | 6     | vs Auburn 01/17/24                                |
| FT Attempts  | 6     | vs Auburn 01/17/24                                |

| Opponent           | Date       | GS | MIN    | Total  |      | 3-Pointers |       | Free throws |       | Rebounds |     |     |     | PF | A  | TO | BLK | STL | PTS | AVG |
|--------------------|------------|----|--------|--------|------|------------|-------|-------------|-------|----------|-----|-----|-----|----|----|----|-----|-----|-----|-----|
|                    |            |    |        | FG-FGA | PCT  | 3FG-3FGA   | PCT   | FT-FTA      | PCT   | OFF      | DEF | TOT | AVG |    |    |    |     |     |     |     |
| Presbyterian       | 11/07/2023 |    | 22:17  | 2-6    | .333 | 0-2        | .000  | 0-0         | .000  | 1        | 3   | 4   | 4.0 | 5  | 2  | 4  | 2   | 2   | 4   | 4.0 |
| USC Upstate        | 11/10/2023 |    | 02:01  | 0-1    | .000 | 0-0        | .000  | 0-0         | .000  | 0        | 0   | 0   | 2.0 | 0  | 0  | 1  | 0   | 0   | 0   | 2.0 |
| UNC Greensboro     | 11/14/2023 |    | 18:10  | 4-8    | .500 | 0-3        | .000  | 0-0         | .000  | 0        | 5   | 5   | 3.0 | 1  | 0  | 1  | 0   | 0   | 8   | 4.0 |
| Central Ark.       | 11/17/2023 |    | 12:10  | 3-7    | .429 | 2-3        | .667  | 0-0         | .000  | 0        | 0   | 0   | 2.3 | 2  | 0  | 1  | 0   | 0   | 8   | 5.0 |
| vs NC State        | 11/23/2023 |    | 19:03  | 3-7    | .429 | 3-4        | .750  | 3-4         | .750  | 2        | 1   | 3   | 2.4 | 1  | 0  | 2  | 0   | 1   | 12  | 6.4 |
| vs Arizona St.     | 11/24/2023 |    | 13:43  | 1-7    | .143 | 0-4        | .000  | 0-0         | .000  | 1        | 1   | 2   | 2.3 | 3  | 0  | 0  | 0   | 1   | 2   | 5.7 |
| Boston College     | 11/29/2023 |    | 11:29  | 3-8    | .375 | 2-3        | .667  | 3-4         | .750  | 2        | 3   | 5   | 2.7 | 1  | 0  | 0  | 0   | 1   | 11  | 6.4 |
| Alabama A&M        | 12/02/2023 |    | 20:15  | 3-8    | .375 | 1-4        | .250  | 3-5         | .600  | 2        | 6   | 8   | 3.4 | 3  | 3  | 1  | 0   | 1   | 10  | 6.9 |
| San Francisco      | 12/06/2023 |    | 17:04  | 3-7    | .429 | 2-2        | 1.000 | 0-0         | .000  | 0        | 2   | 2   | 3.2 | 1  | 0  | 1  | 0   | 1   | 8   | 7.0 |
| vs Texas Tech      | 12/16/2023 |    | 11:33  | 3-6    | .500 | 1-2        | .500  | 0-0         | .000  | 0        | 1   | 1   | 3.0 | 1  | 0  | 0  | 0   | 0   | 7   | 7.0 |
| Western Caro.      | 12/19/2023 |    | 16:17  | 1-5    | .200 | 0-0        | .000  | 3-3         | 1.000 | 1        | 2   | 3   | 3.0 | 3  | 0  | 1  | 1   | 0   | 5   | 6.8 |
| at Memphis         | 12/23/2023 |    | 13:26  | 3-6    | .500 | 3-6        | .500  | 3-3         | 1.000 | 2        | 2   | 4   | 3.1 | 0  | 0  | 3  | 0   | 0   | 12  | 7.3 |
| Dartmouth          | 12/30/2023 |    | 24:51  | 3-11   | .273 | 0-5        | .000  | 0-0         | .000  | 0        | 3   | 3   | 3.1 | 0  | 1  | 1  | 0   | 3   | 6   | 7.2 |
| Alabama            | 01/06/2024 |    | 23:01  | 8-13   | .615 | 1-4        | .250  | 3-4         | .750  | 2        | 4   | 6   | 3.3 | 3  | 1  | 1  | 1   | 2   | 20  | 8.1 |
| at LSU             | 01/09/2024 |    | 25:03  | 4-11   | .364 | 2-6        | .333  | 0-0         | .000  | 0        | 5   | 5   | 3.4 | 1  | 0  | 4  | 1   | 2   | 10  | 8.2 |
| at Ole Miss        | 01/13/2024 |    | 23:03  | 4-9    | .444 | 2-7        | .286  | 2-5         | .400  | 1        | 3   | 4   | 3.4 | 1  | 1  | 0  | 0   | 1   | 12  | 8.4 |
| Auburn             | 01/17/2024 |    | 20:43  | 4-7    | .571 | 0-1        | .000  | 6-6         | 1.000 | 1        | 2   | 3   | 3.4 | 4  | 0  | 1  | 0   | 4   | 14  | 8.8 |
| at Mississippi St. | 01/20/2024 | *  | 24:16  | 3-13   | .231 | 1-7        | .143  | 0-1         | .000  | 2        | 4   | 6   | 3.6 | 3  | 2  | 1  | 0   | 1   | 7   | 8.7 |
| Tennessee          | 01/27/2024 | *  | 28:22  | 2-8    | .250 | 1-4        | .250  | 2-2         | 1.000 | 1        | 2   | 3   | 3.5 | 2  | 1  | 0  | 0   | 1   | 7   | 8.6 |
| at Auburn          | 01/31/2024 |    | 14:16  | 0-2    | .000 | 0-0        | .000  | 0-0         | .000  | 0        | 2   | 2   | 3.5 | 1  | 1  | 1  | 0   | 1   | 0   | 8.2 |
| Totals             |            | 2  | 361:03 | 57-150 | .380 | 21-67      | .313  | 28-37       | .757  | 18       | 51  | 69  | 3.5 | 36 | 12 | 24 | 5   | 22  | 163 | 8.2 |

Player Averages

| Games Played | Minutes/ game | Points/ game | FG Pct | 3FG Pct | FT Pct | Rebounds/ game | Assists/ game | Turnovers/ game | Assist/Turnover ratio | Steals/ game | Blocks/ game |
|--------------|---------------|--------------|--------|---------|--------|----------------|---------------|-----------------|-----------------------|--------------|--------------|
| 20           | 18.1          | 8.2          | 38.0   | 31.3    | 75.7   | 3.5            | 0.6           | 1.2             | 0.5                   | 1.1          | 0.3          |



JAQUALON "JQ" ROBERTS

24

Freshman // Forward  
6'8" // 220  
Bloomington, Ind.  
Bloomington HS North  
*juh-KWAY-lin*

|         |       |       |          | Field Goals |      | 3-Point  |      | F-Throws |      | Rebounds |     |     |     | Scoring |   |    |     |     |     |     |
|---------|-------|-------|----------|-------------|------|----------|------|----------|------|----------|-----|-----|-----|---------|---|----|-----|-----|-----|-----|
| SEASON  | TEAM  | GP-GS | MIN/AVG  | FG-FGA      | FG%  | 3FG-3FGA | 3FG% | FT-FTA   | FT%  | OFF      | DEF | TOT | AVG | PF-FO   | A | TO | BLK | STL | PTS | AVG |
| 2023-24 | Vandy | 9-0   | 101/11.2 | 4-19        | .211 | 0-8      | .000 | 1-4      | .250 | 9        | 11  | 20  | 2.2 | 9-0     | 3 | 5  | 3   | 1   | 9   | 1.0 |
| TOTAL   |       | 9-0   | 101/11.2 | 4-19        | .211 | 0-8      | .000 | 1-4      | .250 | 9        | 11  | 20  | 2.2 | 9-0     | 3 | 5  | 3   | 1   | 9   | 1.0 |

Single Game Highs

| Statistic    | Value  |
|--------------|--|
| Points       | 2 4 times  |
| Rebounds     | 5 vs UNC Greensboro 11/14/23, vs Boston College 11/29/23                   |
| Assists      | 1 vs UNC Greensboro 11/14/23, vs NC State 11/23/23, vs Texas Tech 12/16/23 |
| Steals       | 1 vs Arizona St. 11/24/23  |
| Blocks       | 2 vs UNC Greensboro 11/14/23   |
| FG Made      | 1 4 times  |
| FG Attempts  | 4 vs USC Upstate 11/10/23  |
| 3FG Attempts | 3 vs USC Upstate 11/10/23  |
| FT Made      | 1 vs Texas Tech 12/16/23   |
| FT Attempts  | 2 vs Texas Tech 12/16/23   |

| Opponent       | Date       | GS | MIN    | Total  |      | 3-Pointers |      | Free throws |       | Rebounds |     |     |     | PF | A | TO | BLK | STL | PTS | AVG |
|----------------|------------|----|--------|--------|------|------------|------|-------------|-------|----------|-----|-----|-----|----|---|----|-----|-----|-----|-----|
|                |            |    |        | FG-FGA | PCT  | 3FG-3FGA   | PCT  | FT-FTA      | PCT   | OFF      | DEF | TOT | AVG |    |   |    |     |     |     |     |
| Presbyterian   | 11/07/2023 |    | 06:58  | 0-1    | .000 | 0-0        | .000 | 0-0         | .000  | 1        | 0   | 1   | 1.0 | 0  | 0 | 2  | 0   | 0   | 0   | 0.0 |
| USC Upstate    | 11/10/2023 |    | 11:28  | 1-4    | .250 | 0-3        | .000 | 0-0         | .000  | 0        | 0   | 0   | 0.5 | 0  | 0 | 0  | 0   | 0   | 2   | 1.0 |
| UNC Greensboro | 11/14/2023 |    | 15:59  | 0-1    | .000 | 0-0        | .000 | 0-0         | .000  | 2        | 3   | 5   | 2.0 | 2  | 1 | 1  | 2   | 0   | 0   | 0.7 |
| Central Ark.   | 11/17/2023 |    | 10:58  | 0-1    | .000 | 0-1        | .000 | 0-0         | .000  | 1        | 0   | 1   | 1.8 | 1  | 0 | 0  | 0   | 0   | 0   | 0.5 |
| vs NC State    | 11/23/2023 |    | 04:33  | 1-2    | .500 | 0-0        | .000 | 0-0         | .000  | 1        | 0   | 1   | 1.6 | 0  | 1 | 1  | 0   | 0   | 2   | 0.8 |
| vs Arizona St. | 11/24/2023 |    | 13:43  | 1-3    | .333 | 0-2        | .000 | 0-1         | .000  | 0        | 4   | 4   | 2.0 | 2  | 0 | 0  | 0   | 1   | 2   | 1.0 |
| Boston College | 11/29/2023 |    | 14:32  | 0-3    | .000 | 0-1        | .000 | 0-0         | .000  | 3        | 2   | 5   | 2.4 | 2  | 0 | 0  | 0   | 0   | 0   | 0.9 |
| Alabama A&M    | 12/02/2023 |    | 12:18  | 1-2    | .500 | 0-0        | .000 | 0-1         | .000  | 0        | 2   | 2   | 2.4 | 1  | 0 | 1  | 1   | 0   | 2   | 1.0 |
| vs Texas Tech  | 12/16/2023 |    | 10:29  | 0-2    | .000 | 0-1        | .000 | 1-2         | .500  | 1        | 0   | 1   | 2.2 | 1  | 1 | 0  | 0   | 0   | 1   | 1.0 |
| at Memphis     | 12/23/2023 |    | 03:11  | 0-1    | .000 | 0-0        | .000 | 1-2         | .500  | 0        | 2   | 2   | 2.2 | 0  | 0 | 1  | 0   | 0   | 1   | 1.0 |
| at LSU         | 01/09/2024 |    | 10:07  | 0-1    | .000 | 0-1        | .000 | 0-2         | .000  | 3        | 3   | 6   | 2.5 | 0  | 1 | 2  | 1   | 0   | 0   | 0.9 |
| at Ole Miss    | 01/13/2024 | *  | 28:58  | 2-4    | .500 | 2-3        | .667 | 2-2         | 1.000 | 0        | 2   | 2   | 2.5 | 1  | 2 | 0  | 1   | 0   | 8   | 1.5 |
| Auburn         | 01/17/2024 | *  | 15:20  | 0-1    | .000 | 0-1        | .000 | 0-0         | .000  | 0        | 4   | 4   | 2.6 | 1  | 0 | 1  | 0   | 1   | 0   | 1.4 |
| Tennessee      | 01/27/2024 |    | 06:17  | 0-1    | .000 | 0-1        | .000 | 0-0         | .000  | 0        | 0   | 0   | 2.4 | 0  | 0 | 0  | 1   | 0   | 0   | 1.3 |
| at Auburn      | 01/31/2024 |    | 02:36  | 0-1    | .000 | 0-1        | .000 | 0-0         | .000  | 0        | 0   | 0   | 2.3 | 0  | 0 | 0  | 0   | 0   | 0   | 1.2 |
| Totals         |            | 2  | 167:27 | 6-28   | .214 | 2-15       | .133 | 4-10        | .400  | 12       | 22  | 34  | 2.3 | 11 | 6 | 9  | 6   | 2   | 18  | 1.2 |

Player Averages

| Games Played | Minutes/ game | Points/ game | FG Pct | 3FG Pct | FT Pct | Rebounds/ game | Assists/ game | Turnovers/ game | Assist/Turnover ratio | Steals/ game | Blocks/ game |
|--------------|---------------|--------------|--------|---------|--------|----------------|---------------|-----------------|-----------------------|--------------|--------------|
| 15           | 11.2          | 1.2          | 21.4   | 13.3    | 40.0   | 2.3            | 0.4           | 0.6             | 0.7                   | 0.1          | 0.4          |



CARTER LANG

35

Freshman // Forward  
6'9" // 235  
Charlottesville, Va.  
St. Anne's-Belfield

TOP GAMES OF 2023-24

7 pts, 11 reb  
vs. Presbyterian (11/7/23)

|         |       |       |          | Field Goals |      | 3-Point  |      | F-Throws |      | Rebounds |     |     |     |       |   |    |     |     |     | Scoring |  |
|---------|-------|-------|----------|-------------|------|----------|------|----------|------|----------|-----|-----|-----|-------|---|----|-----|-----|-----|---------|--|
| SEASON  | TEAM  | GP-GS | MIN/AVG  | FG-FGA      | FG%  | 3FG-3FGA | 3FG% | FT-FTA   | FT%  | OFF      | DEF | TOT | AVG | PF-FO | A | TO | BLK | STL | PTS | AVG     |  |
| 2023-24 | Vandy | 17-7  | 226/13.3 | 16-32       | .500 | 0-1      | .000 | 10-20    | .500 | 26       | 42  | 68  | 4.0 | 24-1  | 6 | 15 | 7   | 5   | 42  | 2.5     |  |
| TOTAL   |       | 17-7  | 226/13.3 | 16-32       | .500 | 0-1      | .000 | 10-20    | .500 | 26       | 42  | 68  | 4.0 | 24-1  | 6 | 15 | 7   | 5   | 42  | 2.5     |  |

Single Game Highs

| Statistic    | Value |   |
|--------------|-------|---|
| Points       | 8     | vs Boston College 11/29/23  |
| Rebounds     | 11    | vs Presbyterian 11/07/23  |
| Assists      | 2     | vs UNC Greensboro 11/14/23  |
| Steals       | 1     | 5 times   |
| Blocks       | 2     | at Memphis 12/23/23   |
| FG Made      | 3     | vs Boston College 11/29/23  |
| FG Attempts  | 4     | vs UNC Greensboro 11/14/23, vs Boston College 11/29/23, vs Western Caro. 12/19/23 |
| 3FG Attempts | 1     | vs Auburn 01/17/24  |
| FT Made      | 5     | vs Presbyterian 11/07/23  |
| FT Attempts  | 8     | vs Presbyterian 11/07/23  |

|             |            |    |       | Total  |      | 3-Pointers |      | Free throws |      | Rebounds |     |     |     |    |   |    |     |     |     |     |
|-------------|------------|----|-------|--------|------|------------|------|-------------|------|----------|-----|-----|-----|----|---|----|-----|-----|-----|-----|
| Opponent    | Date       | GS | MIN   | FG-FGA | PCT  | 3FG-3FGA   | PCT  | FT-FTA      | PCT  | OFF      | DEF | TOT | AVG | PF | A | TO | BLK | STL | PTS | AVG |
| vs NC State | 11/23/2023 |    | 07:02 | 0-0    | .000 | 0-0        | .000 | 1-4         | .250 | 0        | 2   | 2   | 2.0 | 1  | 0 | 1  | 0   | 0   | 1   | 1.0 |
| Totals      |            | 0  | 07:02 | 0-0    | .000 | 0-0        | .000 | 1-4         | .250 | 0        | 2   | 2   | 2.0 | 1  | 0 | 1  | 0   | 0   | 1   | 1.0 |

Player Averages

| Games Played | Minutes/ game | Points/ game | FG Pct | 3FG Pct | FT Pct | Rebounds/ game | Assists/ game | Turnovers/ game | Assist/Turnover ratio | Steals/ game | Blocks/ game |
|--------------|---------------|--------------|--------|---------|--------|----------------|---------------|-----------------|-----------------------|--------------|--------------|
| 1            | 7.0           | 1.0          | 0.0    | 0.0     | 25.0   | 2.0            | 0.0           | 1.0             | 0.0                   | 0.0          | 0.0          |





GRAHAM CALTON

**22** Junior // Guard  
6'5" // 210  
Charlotte, N.C.  
Charlotte Latin School  
*CALL-tin*

|         |       |       |         | Field Goals |      | 3-Point  |      | F-Throws |      | Rebounds |     |     |     |       |   |    |     |     | Scoring |     |
|---------|-------|-------|---------|-------------|------|----------|------|----------|------|----------|-----|-----|-----|-------|---|----|-----|-----|---------|-----|
| SEASON  | TEAM  | GP-GS | MIN/AVG | FG-FGA      | FG%  | 3FG-3FGA | 3FG% | FT-FTA   | FT%  | OFF      | DEF | TOT | AVG | PF-FO | A | TO | BLK | STL | PTS     | AVG |
| 2021-22 | Vandy | 4-0   | 12/3.0  | 1-3         | .333 | 1-3      | .333 | 0-0      | .000 | 0        | 1   | 1   | 0.3 | 1-0   | 0 | 0  | 0   | 1   | 3       | 0.8 |
| 2022-23 | Vandy | 6-0   | 30/5.0  | 0-4         | .000 | 0-3      | .000 | 0-0      | .000 | 1        | 0   | 1   | 0.2 | 4-0   | 2 | 0  | 0   | 1   | 0       | 0.0 |
| 2023-24 | Vandy | 5-0   | 22/4.4  | 0-6         | .000 | 0-5      | .000 | 1-2      | .500 | 3        | 0   | 3   | 0.6 | 5-0   | 0 | 0  | 0   | 1   | 1       | 0.2 |
| TOTAL   |       | 15-0  | 64/4.3  | 1-13        | .077 | 1-11     | .091 | 1-2      | .500 | 4        | 1   | 5   | 0.3 | 10-0  | 2 | 0  | 0   | 3   | 4       | 0.3 |

## Single Game Highs

| Statistic    | Value |   |
|--------------|-------|---|
| Points       | 3     | vs Georgia 03/09/22   |
| Rebounds     | 2     | vs Dartmouth 12/30/23   |
| Assists      | 1     | vs Morehead St. 11/18/22, vs Southeastern La. 12/30/22                                  |
| Steals       | 1     | vs Mississippi Val. 11/29/21, vs Southeastern La. 12/30/22, at Mississippi St. 01/20/24 |
| FG Made      | 1     | vs Georgia 03/09/22   |
| FG Attempts  | 2     | vs Southeastern La. 12/30/22, vs Dartmouth 12/30/23, at Mississippi St. 01/20/24        |
| 3FG Made     | 1     | vs Georgia 03/09/22   |
| 3FG Attempts | 2     | vs Southeastern La. 12/30/22, at Mississippi St. 01/20/24                               |
| FT Made      | 1     | at Mississippi St. 01/20/24   |
| FT Attempts  | 2     | at Mississippi St. 01/20/24   |



MILES KEEFFE

**25** Sophomore // Guard  
6'5" // 200  
Novato, Calif.  
So. California Academy  
*KEEF*

|         |       |       |         | Field Goals |      | 3-Point  |      | F-Throws |       | Rebounds |     |     |     |       |   |    |     |     | Scoring |     |
|---------|-------|-------|---------|-------------|------|----------|------|----------|-------|----------|-----|-----|-----|-------|---|----|-----|-----|---------|-----|
| SEASON  | TEAM  | GP-GS | MIN/AVG | FG-FGA      | FG%  | 3FG-3FGA | 3FG% | FT-FTA   | FT%   | OFF      | DEF | TOT | AVG | PF-FO | A | TO | BLK | STL | PTS     | AVG |
| 2022-23 | Vandy | 6-1   | 26/4.3  | 1-4         | .250 | 0-3      | .000 | 2-2      | 1.000 | 1        | 2   | 3   | 0.5 | 1-0   | 0 | 0  | 0   | 0   | 4       | 0.7 |
| 2023-24 | Vandy | 1-0   | 2/2.2   | 0-1         | .000 | 0-0      | .000 | 0-0      | .000  | 0        | 0   | 0   | 0.0 | 0-0   | 0 | 0  | 0   | 0   | 0       | 0.0 |
| TOTAL   |       | 7-1   | 28/4.0  | 1-5         | .200 | 0-3      | .000 | 2-2      | 1.000 | 1        | 2   | 3   | 0.4 | 1-0   | 0 | 0  | 0   | 0   | 4       | 0.6 |

## Single Game Highs

| Statistic    | Value |  |
|--------------|-------|--|
| Points       | 2     | vs Southeastern La. 12/30/22, vs Kentucky 01/24/23                         |
| Rebounds     | 1     | at Temple 11/15/22, vs Morehead St. 11/18/22, vs Southeastern La. 12/30/22 |
| FG Made      | 1     | vs Southeastern La. 12/30/22   |
| FG Attempts  | 2     | vs Southeastern La. 12/30/22   |
| 3FG Attempts | 1     | vs Southeastern La. 12/30/22, vs Kentucky 01/24/23, at Alabama 01/31/23    |
| FT Made      | 2     | vs Kentucky 01/24/23   |
| FT Attempts  | 2     | vs Kentucky 01/24/23   |

VANDY GAME-BY-GAME

| Opponent           | Date       | Score |   | Total    |      | 3-Pointers |      | Free throws |      | Rebounds |     |     |      |     |     |     |     |     |      |      |  |
|--------------------|------------|-------|---|----------|------|------------|------|-------------|------|----------|-----|-----|------|-----|-----|-----|-----|-----|------|------|--|
|                    |            |       |   | FG-FGA   | PCT  | 3FG-3FGA   | PCT  | FT-FTA      | PCT  | OFF      | DEF | TOT | AVG  | PF  | A   | TO  | BLK | STL | PTS  | AVG  |  |
| Presbyterian       | 11/07/2023 | 62-68 | L | 19-58    | .328 | 8-33       | .242 | 16-27       | .593 | 17       | 24  | 41  | 41.0 | 18  | 8   | 15  | 4   | 12  | 62   | 62.0 |  |
| USC Upstate        | 11/10/2023 | 74-67 | W | 22-48    | .458 | 8-22       | .364 | 22-24       | .917 | 11       | 28  | 39  | 40.0 | 13  | 11  | 15  | 1   | 2   | 74   | 68.0 |  |
| UNC Greensboro     | 11/14/2023 | 74-70 | W | 23-57    | .404 | 11-29      | .379 | 17-18       | .944 | 13       | 31  | 44  | 41.3 | 10  | 12  | 12  | 3   | 1   | 74   | 70.0 |  |
| Central Ark.       | 11/17/2023 | 75-71 | W | 27-61    | .443 | 9-30       | .300 | 12-21       | .571 | 12       | 22  | 34  | 39.5 | 12  | 9   | 9   | 0   | 7   | 75   | 71.3 |  |
| vs NC State        | 11/23/2023 | 78-84 | L | 25-56    | .446 | 7-22       | .318 | 21-30       | .700 | 9        | 31  | 40  | 39.6 | 17  | 11  | 19  | 3   | 9   | 78   | 72.6 |  |
| vs Arizona St.     | 11/24/2023 | 67-82 | L | 24-64    | .375 | 5-29       | .172 | 14-20       | .700 | 13       | 22  | 35  | 38.8 | 20  | 14  | 5   | 1   | 6   | 67   | 71.7 |  |
| Boston College     | 11/29/2023 | 62-80 | L | 20-55    | .364 | 6-20       | .300 | 16-21       | .762 | 13       | 21  | 34  | 38.1 | 15  | 8   | 11  | 2   | 2   | 62   | 70.3 |  |
| Alabama A&M        | 12/02/2023 | 78-59 | W | 23-53    | .434 | 8-25       | .320 | 24-34       | .706 | 9        | 34  | 43  | 38.8 | 15  | 16  | 10  | 2   | 5   | 78   | 71.3 |  |
| San Francisco      | 12/06/2023 | 60-73 | L | 24-56    | .429 | 9-23       | .391 | 3-9         | .333 | 5        | 16  | 21  | 36.8 | 10  | 9   | 8   | 2   | 9   | 60   | 70.0 |  |
| vs Texas Tech      | 12/16/2023 | 54-76 | L | 21-59    | .356 | 4-20       | .200 | 8-15        | .533 | 12       | 17  | 29  | 36.0 | 14  | 11  | 9   | 3   | 7   | 54   | 68.4 |  |
| Western Caro.      | 12/19/2023 | 62-63 | L | 23-67    | .343 | 1-14       | .071 | 15-18       | .833 | 11       | 28  | 39  | 36.3 | 15  | 5   | 7   | 4   | 9   | 62   | 67.8 |  |
| at Memphis         | 12/23/2023 | 75-77 | L | 24-56    | .429 | 10-26      | .385 | 17-22       | .773 | 10       | 29  | 39  | 36.5 | 22  | 12  | 17  | 7   | 5   | 75   | 68.4 |  |
| Dartmouth          | 12/30/2023 | 69-53 | W | 26-62    | .419 | 9-27       | .333 | 8-9         | .889 | 5        | 30  | 35  | 36.4 | 11  | 10  | 6   | 1   | 6   | 69   | 68.5 |  |
| Alabama            | 01/06/2024 | 75-78 | L | 26-65    | .400 | 7-26       | .269 | 16-20       | .800 | 11       | 23  | 34  | 36.2 | 17  | 6   | 9   | 3   | 10  | 75   | 68.9 |  |
| at LSU             | 01/09/2024 | 69-77 | L | 27-61    | .443 | 7-27       | .259 | 8-12        | .667 | 7        | 31  | 38  | 36.3 | 15  | 10  | 15  | 7   | 7   | 69   | 68.9 |  |
| at Ole Miss        | 01/13/2024 | 56-69 | L | 20-53    | .377 | 4-18       | .222 | 12-20       | .600 | 9        | 24  | 33  | 36.1 | 14  | 10  | 10  | 5   | 6   | 56   | 68.1 |  |
| Auburn             | 01/17/2024 | 65-80 | L | 20-53    | .377 | 4-18       | .222 | 21-30       | .700 | 13       | 17  | 30  | 35.8 | 18  | 4   | 11  | 2   | 8   | 65   | 67.9 |  |
| at Mississippi St. | 01/20/2024 | 55-68 | L | 20-53    | .377 | 5-22       | .227 | 10-18       | .556 | 7        | 26  | 33  | 35.6 | 20  | 10  | 11  | 3   | 5   | 55   | 67.2 |  |
| Tennessee          | 01/27/2024 | 62-75 | L | 22-60    | .367 | 8-26       | .308 | 10-13       | .769 | 11       | 20  | 31  | 35.4 | 15  | 8   | 7   | 2   | 6   | 62   | 66.9 |  |
| at Auburn          | 01/31/2024 | 54-81 | L | 15-56    | .268 | 4-17       | .235 | 20-28       | .714 | 11       | 23  | 34  | 35.3 | 20  | 6   | 12  | 5   | 6   | 54   | 66.3 |  |
| Total              |            | 1326  |   | 451-1153 | .391 | 134-474    | .283 | 290-409     | .709 | 209      | 497 | 706 | 35.3 | 311 | 190 | 218 | 60  | 128 | 1326 | 66.3 |  |
| Opponents          |            | 1451  |   | 508-1151 | .441 | 161-432    | .373 | 274-365     | .751 | 186      | 560 | 746 | 37.3 | 352 | 266 | 220 | 69  | 121 | 1451 | 72.6 |  |

Vanderbilt Averages

| Games Played | Points/game | FG Pct | 3FG Pct | FT Pct | Rebounds/game | Assists/game | Turnovers/game | Assist/Turnover ratio | Steals/game | Blocks/game |
|--------------|-------------|--------|---------|--------|---------------|--------------|----------------|-----------------------|-------------|-------------|
| 20           | 66.3        | 39.1   | 28.3    | 70.9   | 35.3          | 9.5          | 10.9           | 0.9                   | 6.4         | 3.0         |

OPPONENT GAME-BY-GAME

|                    |            |       |   | Total    |      | 3-Pointers |      | Free throws |       | Rebounds |     |     |      |     |     |     |     |     |      |      |  |
|--------------------|------------|-------|---|----------|------|------------|------|-------------|-------|----------|-----|-----|------|-----|-----|-----|-----|-----|------|------|--|
| Opponent           | Date       | Score |   | FG-FGA   | PCT  | 3FG-3FGA   | PCT  | FT-FTA      | PCT   | OFF      | DEF | TOT | AVG  | PF  | A   | TO  | BLK | STL | PTS  | AVG  |  |
| Presbyterian       | 11/07/2023 | 62-68 | L | 25-49    | .510 | 4-12       | .333 | 14-21       | .667  | 4        | 29  | 33  | 33.0 | 22  | 12  | 14  | 2   | 7   | 68   | 68.0 |  |
| USC Upstate        | 11/10/2023 | 74-67 | W | 24-55    | .436 | 10-20      | .500 | 9-13        | .692  | 5        | 15  | 20  | 26.5 | 21  | 12  | 6   | 2   | 8   | 67   | 67.5 |  |
| UNC Greensboro     | 11/14/2023 | 74-70 | W | 29-70    | .414 | 7-29       | .241 | 5-7         | .714  | 11       | 20  | 31  | 28.0 | 19  | 7   | 5   | 3   | 5   | 70   | 68.3 |  |
| Central Ark.       | 11/17/2023 | 75-71 | W | 28-57    | .491 | 7-13       | .538 | 8-13        | .615  | 10       | 27  | 37  | 30.3 | 19  | 11  | 14  | 1   | 4   | 71   | 69.0 |  |
| vs NC State        | 11/23/2023 | 78-84 | L | 30-70    | .429 | 8-19       | .421 | 16-21       | .762  | 11       | 26  | 37  | 31.6 | 22  | 17  | 12  | 3   | 12  | 84   | 72.0 |  |
| vs Arizona St.     | 11/24/2023 | 67-82 | L | 29-56    | .518 | 10-22      | .455 | 14-17       | .824  | 7        | 30  | 37  | 32.5 | 20  | 14  | 10  | 5   | 5   | 82   | 73.7 |  |
| Boston College     | 11/29/2023 | 62-80 | L | 29-56    | .518 | 10-20      | .500 | 12-17       | .706  | 8        | 27  | 35  | 32.9 | 17  | 15  | 8   | 5   | 3   | 80   | 74.6 |  |
| Alabama A&M        | 12/02/2023 | 78-59 | W | 18-63    | .286 | 4-21       | .190 | 19-20       | .950  | 12       | 29  | 41  | 33.9 | 26  | 8   | 12  | 0   | 4   | 59   | 72.6 |  |
| San Francisco      | 12/06/2023 | 60-73 | L | 26-51    | .510 | 13-29      | .448 | 8-9         | .889  | 9        | 30  | 39  | 34.4 | 12  | 19  | 15  | 3   | 4   | 73   | 72.7 |  |
| vs Texas Tech      | 12/16/2023 | 54-76 | L | 26-53    | .491 | 9-16       | .563 | 15-17       | .882  | 11       | 29  | 40  | 35.0 | 14  | 22  | 12  | 4   | 8   | 76   | 73.0 |  |
| Western Caro.      | 12/19/2023 | 62-63 | L | 20-55    | .364 | 7-19       | .368 | 16-21       | .762  | 10       | 33  | 43  | 35.7 | 15  | 8   | 15  | 3   | 3   | 63   | 72.1 |  |
| at Memphis         | 12/23/2023 | 75-77 | L | 21-55    | .382 | 9-25       | .360 | 26-35       | .743  | 8        | 24  | 32  | 35.4 | 20  | 9   | 9   | 5   | 10  | 77   | 72.5 |  |
| Dartmouth          | 12/30/2023 | 69-53 | W | 20-53    | .377 | 5-22       | .227 | 8-8         | 1.000 | 3        | 32  | 35  | 35.4 | 12  | 8   | 13  | 1   | 2   | 53   | 71.0 |  |
| Alabama            | 01/06/2024 | 75-78 | L | 26-53    | .491 | 12-30      | .400 | 14-21       | .667  | 9        | 32  | 41  | 35.8 | 15  | 13  | 16  | 5   | 5   | 78   | 71.5 |  |
| at LSU             | 01/09/2024 | 69-77 | L | 27-64    | .422 | 3-16       | .188 | 20-23       | .870  | 7        | 29  | 36  | 35.8 | 12  | 10  | 8   | 2   | 11  | 77   | 71.9 |  |
| at Ole Miss        | 01/13/2024 | 56-69 | L | 24-59    | .407 | 10-25      | .400 | 11-15       | .733  | 12       | 30  | 42  | 36.2 | 15  | 18  | 8   | 6   | 6   | 69   | 71.7 |  |
| Auburn             | 01/17/2024 | 65-80 | L | 27-58    | .466 | 8-25       | .320 | 18-22       | .818  | 14       | 25  | 39  | 36.4 | 22  | 13  | 10  | 5   | 9   | 80   | 72.2 |  |
| at Mississippi St. | 01/20/2024 | 55-68 | L | 25-58    | .431 | 6-21       | .286 | 12-22       | .545  | 13       | 32  | 45  | 36.8 | 18  | 15  | 13  | 2   | 7   | 68   | 71.9 |  |
| Tennessee          | 01/27/2024 | 62-75 | L | 26-53    | .491 | 9-22       | .409 | 14-22       | .636  | 10       | 28  | 38  | 36.9 | 10  | 14  | 7   | 5   | 3   | 75   | 72.1 |  |
| at Auburn          | 01/31/2024 | 54-81 | L | 28-63    | .444 | 10-26      | .385 | 15-21       | .714  | 12       | 33  | 45  | 37.3 | 21  | 21  | 13  | 7   | 5   | 81   | 72.6 |  |
| Total              |            | 1451  |   | 508-1151 | .441 | 161-432    | .373 | 274-365     | .751  | 186      | 560 | 746 | 37.3 | 352 | 266 | 220 | 69  | 121 | 1451 | 72.6 |  |
| Vanderbilt         |            | 1326  |   | 451-1153 | .391 | 134-474    | .283 | 290-409     | .709  | 209      | 497 | 706 | 35.3 | 311 | 190 | 218 | 60  | 128 | 1326 | 66.3 |  |

Opponents Averages

| Games Played | Points/game | FG Pct | 3FG Pct | FT Pct | Rebounds/game | Assists/game | Turnovers/game | Assist/Turnover ratio | Steals/game | Blocks/game |
|--------------|-------------|--------|---------|--------|---------------|--------------|----------------|-----------------------|-------------|-------------|
| 20           | 72.6        | 44.1   | 37.3    | 75.1   | 37.3          | 13.3         | 11.0           | 1.2                   | 6.1         | 3.5         |

SEASON STATS



2023-24 Vanderbilt Men's Basketball  
Combined Team Statistics  
All games

Page 1/1  
as of Feb 02, 2024

| Game Records   |         |      |      |         | Score by Periods |     |     |    |      |
|----------------|---------|------|------|---------|------------------|-----|-----|----|------|
| Record         | Overall | Home | Away | Neutral | Team             | 1st | 2nd | OT | TOT  |
| ALL GAMES      | 5-15    | 5-7  | 0-5  | 0-3     | Vanderbilt       | 607 | 719 | 0  | 1326 |
| CONFERENCE     | 0-7     | 0-3  | 0-4  | 0-0     | Opponents        | 696 | 755 | 0  | 1451 |
| NON-CONFERENCE | 5-8     | 5-4  | 0-1  | 0-3     |                  |     |     |    |      |

| Team Box Score |                        |       |        |      |          |      |          |      |         |      |          |     |     |      |     |    |     |     |     |     |      |      |
|----------------|------------------------|-------|--------|------|----------|------|----------|------|---------|------|----------|-----|-----|------|-----|----|-----|-----|-----|-----|------|------|
| No.            | Player                 |       |        |      | Total    |      | 3-Point  |      | F-Throw |      | Rebounds |     |     |      |     |    |     |     |     |     |      |      |
|                |                        | GP-GS | MIN    | AVG  | FG-FGA   | FG%  | 3FG-3FGA | 3FG% | FT-FTA  | FT%  | OFF      | DEF | TOT | AVG  | PF  | DQ | A   | TO  | BLK | STL | PTS  | AVG  |
| 5              | MANJON, Ezra           | 18-18 | 554:41 | 30.8 | 89-199   | .447 | 9-28     | .321 | 75-89   | .843 | 7        | 51  | 58  | 3.2  | 25  | 0  | 60  | 38  | 3   | 19  | 262  | 14.6 |
| 0              | LAWRENCE, Tyrin        | 16-16 | 494:34 | 30.9 | 70-181   | .387 | 16-59    | .271 | 71-99   | .717 | 10       | 73  | 83  | 5.2  | 27  | 0  | 29  | 36  | 7   | 29  | 227  | 14.2 |
| 2              | LUBIN, Ven-Allen       | 14-14 | 358:56 | 25.6 | 51-105   | .486 | 6-18     | .333 | 33-41   | .805 | 27       | 52  | 79  | 5.6  | 28  | 0  | 7   | 14  | 16  | 6   | 141  | 10.1 |
| 23             | RIVERA-TORRES, Jason   | 20-2  | 361:03 | 18.1 | 57-150   | .380 | 21-67    | .313 | 28-37   | .757 | 18       | 51  | 69  | 3.5  | 36  | 1  | 12  | 24  | 5   | 22  | 163  | 8.2  |
| 12             | TAYLOR, Evan           | 20-14 | 463:22 | 23.2 | 54-155   | .348 | 28-92    | .304 | 27-33   | .818 | 16       | 58  | 74  | 3.7  | 38  | 1  | 6   | 12  | 5   | 13  | 163  | 8.2  |
| 1              | SMITH, Colin           | 7-6   | 178:15 | 25.5 | 17-48    | .354 | 9-33     | .273 | 7-13    | .538 | 16       | 30  | 46  | 6.6  | 12  | 0  | 2   | 7   | 2   | 7   | 50   | 7.1  |
| 21             | KAMATEROS, Tasos       | 20-5  | 339:49 | 17.0 | 32-80    | .400 | 23-67    | .343 | 11-15   | .733 | 12       | 31  | 43  | 2.2  | 32  | 0  | 3   | 7   | 4   | 5   | 98   | 4.9  |
| 3              | LEWIS, Paul            | 19-3  | 311:45 | 16.4 | 26-85    | .306 | 10-46    | .217 | 8-13    | .615 | 5        | 16  | 21  | 1.1  | 21  | 0  | 31  | 17  | 1   | 5   | 70   | 3.7  |
| 4              | WEST, Isaiah           | 13-4  | 169:33 | 13.0 | 17-35    | .486 | 4-15     | .267 | 3-10    | .300 | 1        | 13  | 14  | 1.1  | 14  | 0  | 8   | 12  | 1   | 3   | 41   | 3.2  |
| 35             | LANG, Carter           | 17-7  | 225:58 | 13.3 | 16-32    | .500 | 0-1      | .000 | 10-20   | .500 | 26       | 42  | 68  | 4.0  | 24  | 1  | 6   | 15  | 7   | 5   | 42   | 2.5  |
| 10             | WILLIAMS, Jordan       | 16-7  | 175:06 | 10.9 | 9-30     | .300 | 5-23     | .217 | 2-4     | .500 | 3        | 16  | 19  | 1.2  | 21  | 0  | 12  | 8   | 3   | 5   | 25   | 1.6  |
| 13             | PRESLEY, Malik         | 16-2  | 168:25 | 10.5 | 7-18     | .389 | 1-5      | .200 | 9-19    | .474 | 15       | 10  | 25  | 1.6  | 16  | 0  | 8   | 4   | 0   | 6   | 24   | 1.5  |
| 24             | ROBERTS, JaQualon "JQ" | 15-2  | 167:27 | 11.2 | 6-28     | .214 | 2-15     | .133 | 4-10    | .400 | 12       | 22  | 34  | 2.3  | 11  | 0  | 6   | 9   | 6   | 2   | 18   | 1.2  |
| 34             | DORT, Lee              | 1-0   | 07:02  | 7.0  | 0-0      | .000 | 0-0      | .000 | 1-4     | .250 | 0        | 2   | 2   | 2.0  | 1   | 0  | 0   | 1   | 0   | 0   | 1    | 1.0  |
| 22             | CALTON, Graham         | 5-0   | 21:50  | 4.4  | 0-6      | .000 | 0-5      | .000 | 1-2     | .500 | 3        | 0   | 3   | 0.6  | 5   | 0  | 0   | 0   | 0   | 1   | 1    | 0.2  |
| 25             | KEEFFE, Miles          | 1-0   | 02:14  | 2.2  | 0-1      | .000 | 0-0      | .000 | 0-0     | .000 | 0        | 0   | 0   | 0.0  | 0   | 0  | 0   | 0   | 0   | 0   | 0    | 0.0  |
| Team           |                        |       |        |      |          |      |          |      |         |      | 38       | 30  | 68  |      |     |    |     | 14  |     |     |      |      |
| Total          |                        | 20    | 4000   |      | 451-1153 | .391 | 134-474  | .283 | 290-409 | .709 | 209      | 497 | 706 | 35.3 | 311 | 3  | 190 | 218 | 60  | 128 | 1326 | 66.3 |
| Opponents      |                        | 20    | 4000   |      | 508-1151 | .441 | 161-432  | .373 | 274-365 | .751 | 186      | 560 | 746 | 37.3 | 352 | 5  | 266 | 220 | 69  | 121 | 1451 | 72.6 |

| Team Statistics        |          |          | Team Results |                    |         |
|------------------------|----------|----------|--------------|--------------------|---------|
|                        | VANDY    | OPP      | Date         | Opponent           | Score   |
| Scoring                | 1326     | 1451     | 11/07/2023   | Presbyterian       | L 62-68 |
| Points per game        | 66.3     | 72.6     | 11/10/2023   | USC Upstate        | W 74-67 |
| Scoring margin         | -6.3     | -        | 11/14/2023   | UNC Greensboro     | W 74-70 |
| Field goals-att        | 451-1153 | 508-1151 | 11/17/2023   | Central Ark.       | W 75-71 |
| Field goal pct         | .391     | .441     | 11/23/2023   | vs NC State        | L 78-84 |
| 3 point fg-att         | 134-474  | 161-432  | 11/24/2023   | vs Arizona St.     | L 67-82 |
| 3-point FG pct         | .283     | .373     | 11/29/2023   | Boston College     | L 62-80 |
| 3-pt FG made per game  | 6.7      | 8.1      | 12/02/2023   | Alabama A&M        | W 78-59 |
| Free throws-att        | 290-409  | 274-365  | 12/06/2023   | San Francisco      | L 60-73 |
| Free throw pct         | .709     | .751     | 12/16/2023   | vs Texas Tech      | L 54-76 |
| F-Throws made per game | 14.5     | 13.7     | 12/19/2023   | Western Caro.      | L 62-63 |
| Rebounds               | 706      | 746      | 12/23/2023   | at Memphis         | L 75-77 |
| Rebounds per game      | 35.3     | 37.3     | 12/30/2023   | Dartmouth          | W 69-53 |
| Rebounding margin      | -2.0     | -        | 01/06/2024   | Alabama            | L 75-78 |
| Assists                | 190      | 266      | 01/09/2024   | at LSU             | L 69-77 |
| Assists per game       | 9.5      | 13.3     | 01/13/2024   | at Ole Miss        | L 56-69 |
| Turnovers              | 218      | 220      | 01/17/2024   | Auburn             | L 65-80 |
| Turnovers per game     | 10.9     | 11.0     | 01/20/2024   | at Mississippi St. | L 55-68 |
| Turnover margin        | +0.1     | -        | 01/27/2024   | Tennessee          | L 62-75 |
| Assist/turnover ratio  | 0.9      | 1.2      | 01/31/2024   | at Auburn          | L 54-81 |
| Steals                 | 128      | 121      |              |                    |         |
| Steals per game        | 6.4      | 6.1      |              |                    |         |
| Blocks                 | 60       | 69       |              |                    |         |
| Blocks per game        | 3.0      | 3.5      |              |                    |         |
| Winning streak         | 0        | -        |              |                    |         |
| Home win streak        | 0        | -        |              |                    |         |
| Attendance             | 78041    | 47175    |              |                    |         |
| Home games-Avg/Game    | 12-6503  | 5-9435   |              |                    |         |
| Neutral site-Avg/Game  | -        | 3-2406   |              |                    |         |

SOUTHEASTERN CONFERENCE STATS



2023-24 Vanderbilt Men's Basketball

Combined Team Statistics

In Conference games

Page 1/1

as of Feb 02, 2024

Game Records

| Record         | Overall | Home | Away | Neutral |
|----------------|---------|------|------|---------|
| ALL GAMES      | 0-7     | 0-3  | 0-4  | 0-0     |
| CONFERENCE     | 0-7     | 0-3  | 0-4  | 0-0     |
| NON-CONFERENCE | 0-0     | 0-0  | 0-0  | 0-0     |

Score by Periods

| Team       | 1st | 2nd | OT | TOT |
|------------|-----|-----|----|-----|
| Vanderbilt | 203 | 233 | 0  | 436 |
| Opponents  | 255 | 273 | 0  | 528 |

Team Box Score

| No.       | Player                 |       |        |      | Total   |      | 3-Point  |      | F-Throw |      | Rebounds |     |     |      |     |    |     |    |     |     |     |      |  |  |
|-----------|------------------------|-------|--------|------|---------|------|----------|------|---------|------|----------|-----|-----|------|-----|----|-----|----|-----|-----|-----|------|--|--|
|           |                        | GP-GS | MIN    | AVG  | FG-FGA  | FG%  | 3FG-3FGA | 3FG% | FT-FTA  | FT%  | OFF      | DEF | TOT | AVG  | PF  | DQ | A   | TO | BLK | STL | PTS | AVG  |  |  |
| 0         | LAWRENCE, Tyrin        | 7-7   | 233:06 | 33.3 | 35-89   | .393 | 7-29     | .241 | 32-45   | .711 | 3        | 35  | 38  | 5.4  | 13  | 0  | 8   | 17 | 4   | 12  | 109 | 15.6 |  |  |
| 5         | MANJON, Ezra           | 7-7   | 221:44 | 31.7 | 29-72   | .403 | 0-6      | .000 | 22-29   | .759 | 4        | 21  | 25  | 3.6  | 11  | 0  | 17  | 16 | 3   | 5   | 80  | 11.4 |  |  |
| 23        | RIVERA-TORRES, Jason   | 7-2   | 158:44 | 22.7 | 25-63   | .397 | 7-29     | .241 | 13-18   | .722 | 7        | 22  | 29  | 4.1  | 15  | 0  | 6   | 8  | 2   | 12  | 70  | 10.0 |  |  |
| 2         | LUBIN, Ven-Allen       | 7-7   | 181:58 | 26.0 | 23-50   | .460 | 3-8      | .375 | 16-21   | .762 | 18       | 23  | 41  | 5.9  | 16  | 0  | 5   | 8  | 9   | 5   | 65  | 9.3  |  |  |
| 12        | TAYLOR, Evan           | 7-3   | 125:40 | 18.0 | 15-44   | .341 | 10-28    | .357 | 5-6     | .833 | 5        | 17  | 22  | 3.1  | 16  | 1  | 2   | 4  | 0   | 3   | 45  | 6.4  |  |  |
| 3         | LEWIS, Paul            | 6-0   | 69:20  | 11.6 | 5-19    | .263 | 3-8      | .375 | 1-5     | .200 | 0        | 2   | 2   | 0.3  | 4   | 0  | 3   | 1  | 0   | 1   | 14  | 2.3  |  |  |
| 13        | PRESLEY, Malik         | 6-2   | 78:40  | 13.1 | 4-7     | .571 | 1-2      | .500 | 5-11    | .455 | 6        | 2   | 8   | 1.3  | 8   | 0  | 2   | 1  | 0   | 1   | 14  | 2.3  |  |  |
| 35        | LANG, Carter           | 5-0   | 50:03  | 10.0 | 4-7     | .571 | 0-1      | .000 | 0-0     | .000 | 7        | 7   | 14  | 2.8  | 5   | 0  | 1   | 3  | 2   | 0   | 8   | 1.6  |  |  |
| 24        | ROBERTS, JaQualon "JQ" | 5-2   | 63:18  | 12.7 | 2-8     | .250 | 2-7      | .286 | 2-4     | .500 | 3        | 9   | 12  | 2.4  | 2   | 0  | 3   | 3  | 3   | 1   | 8   | 1.6  |  |  |
| 21        | KAMATEROS, Tasos       | 7-2   | 112:43 | 16.1 | 4-24    | .167 | 3-22     | .136 | 0-0     | .000 | 5        | 11  | 16  | 2.3  | 13  | 0  | 2   | 3  | 2   | 4   | 11  | 1.6  |  |  |
| 10        | WILLIAMS, Jordan       | 7-3   | 81:46  | 11.7 | 3-13    | .231 | 3-12     | .250 | 0-0     | .000 | 1        | 6   | 7   | 1.0  | 12  | 0  | 5   | 3  | 1   | 3   | 9   | 1.3  |  |  |
| 4         | WEST, Isaiah           | 2-0   | 14:14  | 7.1  | 1-2     | .500 | 0-0      | .000 | 0-0     | .000 | 0        | 1   | 1   | 0.5  | 1   | 0  | 0   | 2  | 1   | 0   | 2   | 1.0  |  |  |
| 22        | CALTON, Graham         | 1-0   | 06:31  | 6.5  | 0-2     | .000 | 0-2      | .000 | 1-2     | .500 | 1        | 0   | 1   | 1.0  | 3   | 0  | 0   | 0  | 0   | 1   | 1   | 1.0  |  |  |
| 25        | KEEFFE, Miles          | 1-0   | 02:14  | 2.2  | 0-1     | .000 | 0-0      | .000 | 0-0     | .000 | 0        | 0   | 0   | 0.0  | 0   | 0  | 0   | 0  | 0   | 0   | 0   | 0.0  |  |  |
| Team      |                        |       |        |      |         |      |          |      |         |      | 9        | 8   | 17  |      |     |    |     | 6  |     |     |     |      |  |  |
| Total     |                        | 7     | 1400   |      | 150-401 | .374 | 39-154   | .253 | 97-141  | .688 | 69       | 164 | 233 | 33.3 | 119 | 1  | 54  | 75 | 27  | 48  | 436 | 62.3 |  |  |
| Opponents |                        | 7     | 1400   |      | 183-408 | .449 | 58-165   | .352 | 104-146 | .712 | 77       | 209 | 286 | 40.9 | 113 | 0  | 104 | 75 | 32  | 46  | 528 | 75.4 |  |  |

Team Statistics

|                        | VANDY   | OPP     |
|------------------------|---------|---------|
| Scoring                | 436     | 528     |
| Points per game        | 62.3    | 75.4    |
| Scoring margin         | -13.1   | -       |
| Field goals-att        | 150-401 | 183-408 |
| Field goal pct         | .374    | .449    |
| 3 point fg-att         | 39-154  | 58-165  |
| 3-point FG pct         | .253    | .352    |
| 3-pt FG made per game  | 5.6     | 8.3     |
| Free throws-att        | 97-141  | 104-146 |
| Free throw pct         | .688    | .712    |
| F-Throws made per game | 13.9    | 14.9    |
| Rebounds               | 233     | 286     |
| Rebounds per game      | 33.3    | 40.9    |
| Rebounding margin      | -7.6    | -       |
| Assists                | 54      | 104     |
| Assists per game       | 7.7     | 14.9    |
| Turnovers              | 75      | 75      |
| Turnovers per game     | 10.7    | 10.7    |
| Turnover margin        | 0.0     | -       |
| Assist/turnover ratio  | 0.7     | 1.4     |
| Steals                 | 48      | 46      |
| Steals per game        | 6.9     | 6.6     |
| Blocks                 | 27      | 32      |
| Blocks per game        | 3.9     | 4.6     |
| Winning streak         | 0       | -       |
| Home win streak        | 0       | -       |
| Attendance             | 29654   | 33915   |
| Home games-Avg/Game    | 3-9885  | 4-8479  |
| Neutral site-Avg/Game  | -       | 0-0     |

Team Results

| Date       | Opponent           |   | Score | Att.  |
|------------|--------------------|---|-------|-------|
| 01/06/2024 | Alabama            | L | 75-78 | 8703  |
| 01/09/2024 | at LSU             | L | 69-77 | 7218  |
| 01/13/2024 | at Ole Miss        | L | 56-69 | 8404  |
| 01/17/2024 | Auburn             | L | 65-80 | 7099  |
| 01/20/2024 | at Mississippi St. | L | 55-68 | 9172  |
| 01/27/2024 | Tennessee          | L | 62-75 | 13852 |
| 01/31/2024 | at Auburn          | L | 54-81 | 9121  |



**TYRIN LAWRENCE**

**0** Senior // Guard  
6'4" // 200  
Monticello, Ga.  
Sunrise Christian Acad. (Kan.)  
TY-rin

**COLIN SMITH**

**1** Sophomore // Forward  
6'8" // 220  
Dallas, Texas  
Compass Prep (Ariz.)

**VEN-ALLEN LUBIN**

**2** Sophomore // Forward  
6'8" // 230  
Orlando, Fla.  
Univ. of Notre Dame  
LEW-bin

**PAUL LEWIS**

**3** Sophomore // Guard  
6'2" // 175  
Woodbridge, Va.  
Bishop O'Connell

**ISAIAH WEST**

**4** Freshman // Guard  
6'2" // 190  
Springfield, Tenn.  
Goodpasture Christian

**EZRA MANJON**

**5** Fifth-Year // Guard  
6'0" // 170  
Antioch, Calif.  
UC Davis  
mon-YOWN

**JORDAN WILLIAMS**

**10** Sophomore // Guard  
6'2" // 205  
Houston, Texas  
Texas A&M

**EVAN TAYLOR**

**12** Graduate // G/F  
6'6" // 205  
Glen Ellyn, Ill.  
Lehigh University

**MALIK PRESLEY**

**13** Freshman // G/F  
6'6" // 200  
San Marcos, Texas  
San Marcos HS

**COLESON MESSER**

**15** Freshman // Guard  
6'5" // 210  
Dallas, Texas  
Highland Park HS

**TASOS KAMATEROS**

**21** Graduate // Forward  
6'8" // 240  
Athens, Greece  
Univ. of South Dakota  
TAH-sos kom-uh-TER-os

**GRAHAM CALTON**

**22** Junior // Guard  
6'5" // 210  
Charlotte, N.C.  
Charlotte Latin School  
CALL-tin

**JASON RIVERA-TORRES**

**23** Freshman // G/F  
6'9" // 240  
Bronx, N.Y.  
John Marshall HS (Va.)

**JAQUALON "JQ" ROBERTS**

**24** Freshman // Forward  
6'8" // 220  
Bloomington, Ind.  
Bloomington HS North  
juh-KWAY-lin

**MILES KEEFFE**

**25** Sophomore // Guard  
6'5" // 200  
Novato, Calif.  
So. California Acad.  
KEEF

**LEE DORT**

**34** Sophomore // Forward  
6'10" // 245  
McKinney, Texas  
Greenhill School

**CARTER LANG**

**35** Freshman // Forward  
6'9" // 235  
Charlottesville, Va.  
St. Anne's-Belfield

**JERRY STACKHOUSE**

Head Coach  
5th Season (UNC '99)

**ANDY FOX**

Associate Head Coach  
5th Season (Cornell [Iowa] '04)

**ANTHONY WILKINS**

Assistant Coach  
1st Season (Kent State '13)

**JAMES STRONG**

Assistant Coach  
5th Season (Vanderbilt '00)