



Officials: Dee Kanter, Pualani Spurlock-Welsh, Saif Esho

Louisiana Tech - 63

Record: 2-6

NO.	Name	F	Min	FG			3P			FT			Rebounds			Fouls		TP	AS	TO	ST	Blocks		+/-
				M-A	M-A	M-A	OR	DR	TOT	PF	FD	BS	BA											
33	Mackenzie Wurm	F	06:15	1-3	0-0	0-0	0	0	0	2	0	2	0	0	4	0	4	0	1	1	-7			
44	Anna Larr Roberson	F	35:10	13-18	1-2	0-1	3	3	6	0	3	27	0	0	1	0	1	0	1	-8				
10	Salma Bates	G	37:45	4-10	2-6	3-3	0	2	2	1	2	13	3	3	4	0	0	-4						
22	Jianna Morris	G	30:06	1-5	0-3	5-6	0	2	2	0	5	7	1	2	0	0	0	-8						
23	Silvia Nativi	G	33:26	2-6	1-5	0-0	0	2	2	2	1	5	7	9	0	1	0	-8						
3	Robyn Lee		14:26	3-5	0-0	2-2	1	1	2	2	3	8	2	0	1	0	0	11						
32	Kate Thompson		20:35	0-2	0-0	1-2	1	7	8	3	2	1	0	1	3	2	0	-4						
34	Ayen Angoi		12:58	0-0	0-0	0-0	0	3	3	2	0	0	0	1	1	0	0	-3						
0	Evie Goetz		05:43	0-0	0-0	0-0	0	0	0	0	0	0	1	0	0	0	0	-3						
45	Anja Bukvic		03:36	0-0	0-0	0-0	0	0	0	1	0	0	0	1	0	0	0	-6						
Team							4	2	6			0		3										
<b>Totals</b>				24-49	4-16	11-14	9	22	31	13	16	63	14	24	10	4	2	-8						

Technical Fouls::NONE

Shooting By Period		
1 <sup>st</sup> FG%	6-12	50.0%
3PT%	3-7	42.9%
FT%	1-2	50%
2 <sup>nd</sup> FG%	3-11	27.3%
3PT%	0-3	0.0%
FT%	4-6	66.7%
3 <sup>rd</sup> FG%	6-12	50.0%
3PT%	1-3	33.3%
FT%	2-2	100%
4 <sup>th</sup> FG%	9-14	64.3%
3PT%	0-3	0.0%
FT%	4-4	100%
GM FG%	24-49	49.0%
3PT%	4-16	25.0%
FT%	11-14	78.6%

Dead Ball Rebounds: 1, 0

Vanderbilt - 71

Record: 8-1

NO.	Name	F	Min	FG			3P			FT			Rebounds			Fouls		TP	AS	TO	ST	Blocks		+/-
				M-A	M-A	M-A	OR	DR	TOT	PF	FD	BS	BA											
35	Sacha Washington	F	35:22	15-20	0-0	3-8	6	0	6	2	5	33	1	4	8	2	1	10						
3	Jordyn Cambridge	G	39:34	2-12	0-4	3-4	4	6	10	1	3	7	5	1	3	0	1	9						
11	Jordyn Oliver	G	25:34	2-3	0-0	0-0	2	2	4	4	0	4	6	2	2	0	0	9						
13	Justine Pissott	G	17:44	2-3	1-2	0-0	0	2	2	2	1	5	3	1	0	0	0	11						
23	Iyana Moore	G	17:17	0-4	0-3	0-0	0	1	1	2	0	0	2	2	0	0	1	7						
24	Aga Makurat		21:32	2-6	1-5	0-0	0	4	4	0	2	5	1	1	0	0	0	-3						
4	Madison Greene		27:39	6-13	3-7	2-2	1	0	1	3	1	17	2	1	1	0	0	0						
12	Khamil Pierre		08:34	0-3	0-0	0-0	1	2	3	1	1	0	1	1	0	0	1	-6						
5	Ryanne Allen		06:44	0-1	0-1	0-0	0	0	0	1	0	0	1	1	1	0	0	3						
Team							2	1	3			0		1										
<b>Totals</b>				29-65	5-22	8-14	16	18	34	16	13	71	22	15	15	2	4	8						

Technical Fouls::NONE

Shooting By Period		
1 <sup>st</sup> FG%	8-18	44.4%
3PT%	0-5	0.0%
FT%	3-4	75%
2 <sup>nd</sup> FG%	5-14	35.7%
3PT%	1-5	20.0%
FT%	0-0	0%
3 <sup>rd</sup> FG%	9-17	52.9%
3PT%	4-8	50.0%
FT%	2-4	50%
4 <sup>th</sup> FG%	7-16	43.8%
3PT%	0-4	0.0%
FT%	3-6	50%
GM FG%	29-65	44.6%
3PT%	5-22	22.7%
FT%	8-14	57.1%

Dead Ball Rebounds: 4, 0

	LATECH	VANDY
Biggest lead	2 (1 <sup>st</sup> 3:53)	17 (3 <sup>rd</sup> 4:08)
Best Scoring Run	5 (1 <sup>st</sup> 3:53)	10 (3 <sup>rd</sup> 6:10)
Lead Changes	2	
Times Tied	3	
Time with Lead	00:28	36:53

	LATECH	VANDY
Points from		
Turnovers	8	27
Paint	30	48
Second Chance	8	12
Fast Breaks	7	17
Bench	9	22

	Period by Period Scoring				
	1st	2nd	3rd	4th	TOT
LATECH	16	10	15	22	63
VANDY	19	11	24	17	71



**Period 1**

**Quarter Starters:**

<b>VANDY</b>	3 Cambridge J	11 Oliver J	13 Pissott J	23 Moore I	35 Washington S
<b>LATECH</b>	10 Bates S	22 Morris J	23 Nativi S	33 Wurm M	44 Roberson A

Game Time	VANDY	Score	Diff	LATECH
10:00	35 WASHINGTON S jumpball won			33 WURM M jumpball lost
09:41	23 MOORE I 3pt FG , jump shot missed			
09:36	35 WASHINGTON S offensive rebound (1)			
09:27	3 CAMBRIDGE J 2pt FG second chance outside the paint, jump shot missed			
09:22	35 WASHINGTON S offensive rebound (2)			
09:11	11 OLIVER J 2pt FG second chance in the paint, layup made (2)	<b>2-0</b>	<b>2</b>	
09:11	13 PISSOTT J assist (1)			
08:47	35 WASHINGTON S steal (1)			10 BATES S turnover bad pass (1)
08:28	35 WASHINGTON S 2pt FG from turnover in the paint, layup made (2)	<b>4-0</b>	<b>4</b>	
08:28	11 OLIVER J assist (1)			
08:08				10 BATES S 3pt FG , jump shot missed
08:04				44 ROBERSON A offensive rebound (1)
08:03		<b>4-2</b>	<b>2</b>	44 ROBERSON A 2pt FG second chance in the paint, layup made (2)
07:45	23 MOORE I 2pt FG in the paint, jump shot blocked			
07:45				33 WURM M block (1)
07:45	offensive rebound (3)			
07:36	35 WASHINGTON S 2pt FG second chance in the paint, layup made (4)	<b>6-2</b>	<b>4</b>	
07:18		<b>6-5</b>	<b>1</b>	23 NATIVI S 3pt FG , jump shot made (3)
07:18				22 MORRIS J assist (1)
06:54	3 CAMBRIDGE J 3pt FG , jump shot missed			
06:51	11 OLIVER J offensive rebound (1)			
06:49	11 OLIVER J turnover bad pass (1)			10 BATES S steal (1)
06:43	11 OLIVER J substitution out			
06:43	24 MAKURAT A substitution in			
06:31				33 WURM M 2pt FG from turnover in the paint, turnaround jump shot missed
06:28	13 PISSOTT J defensive rebound (1)			
06:24	35 WASHINGTON S 2pt FG fast break in the paint, layup made (6)	<b>8-5</b>	<b>3</b>	
06:24	13 PISSOTT J assist (2)			
06:08	35 WASHINGTON S steal (2)			33 WURM M turnover bad pass (1)
06:04	35 WASHINGTON S foul drawn (1)			33 WURM M foul shooting (1 - 1)
06:04				33 WURM M substitution out
06:04				3 LEE R substitution in
06:04	35 WASHINGTON S free throw fast break 1 - 2 missed			
06:04	offensive dead ball rebound (1)			
06:04	35 WASHINGTON S free throw fast break 2 - 2 made (7)	<b>9-5</b>	<b>4</b>	
05:54				23 NATIVI S 3pt FG , jump shot missed
05:51	3 CAMBRIDGE J defensive rebound (1)			
05:45	23 MOORE I 3pt FG , jump shot missed			
05:41				23 NATIVI S defensive rebound (1)



**Louisiana Tech at Vanderbilt**

12/03/23 Memorial Gymnasium, Nashville  
2023-24 Women's Basketball

**Game Time:** 1:00 PM  
**Game Duration:** 1:51  
**Attendance:** 1,829

**Officials:** Dee Kanter, Pualani Spurlock-Welsh, Saif Esho

Game Time	VANDY	Score	Diff	LATECH
05:35		<b>9-8</b>	<b>1</b>	10 BATES S 3pt FG fast break, jump shot made (3)
05:35				23 NATIVI S assist (1)
05:15	35 WASHINGTON S 2pt FG in the paint, layup made (9)	<b>11-8</b>	<b>3</b>	
05:15	23 MOORE I assist (1)			
05:01				10 BATES S 3pt FG , jump shot missed
04:57	24 MAKURAT A defensive rebound (1)			
04:54	24 MAKURAT A turnover bad pass (1)			10 BATES S steal (2)
04:46	Timeout media			
04:46	13 PISSOTT J substitution out			
04:46	23 MOORE I substitution out			
04:46	35 WASHINGTON S substitution out			
04:46	4 GREENE M substitution in			
04:46	11 OLIVER J substitution in			
04:46	12 PIERRE K substitution in			
04:46				22 MORRIS J substitution out
04:46				44 ROBERSON A substitution out
04:46				32 THOMPSON K substitution in
04:46				34 ANGOI A substitution in
04:26		<b>11-11</b>	<b>0</b>	10 BATES S 3pt FG from turnover, jump shot made (6)
04:26				3 LEE R assist (1)
04:05	12 PIERRE K 2pt FG in the paint, layup missed			
04:01				34 ANGOI A defensive rebound (1)
03:53		<b>11-13</b>	<b>-2</b>	10 BATES S 2pt FG in the paint, layup made (8)
03:33	24 MAKURAT A 3pt FG , jump shot missed			
03:29	3 CAMBRIDGE J offensive rebound (2)			
03:25	3 CAMBRIDGE J 2pt FG second chance in the paint, driving layup made (2)	<b>13-13</b>	<b>0</b>	
03:25	11 OLIVER J assist (2)			
03:07				3 LEE R 2pt FG in the paint, layup missed
03:04	3 CAMBRIDGE J defensive rebound (3)			
02:58	3 CAMBRIDGE J 3pt FG , jump shot missed			
02:55	12 PIERRE K offensive rebound (1)			
02:53	24 MAKURAT A 2pt FG second chance in the paint, layup made (2)	<b>15-13</b>	<b>2</b>	
02:53	12 PIERRE K assist (1)			
02:45	11 OLIVER J steal (1)			34 ANGOI A turnover bad pass (1)
02:40	11 OLIVER J turnover travel (2)			
02:40	3 CAMBRIDGE J substitution out			
02:40	12 PIERRE K substitution out			
02:40	23 MOORE I substitution in			
02:40	35 WASHINGTON S substitution in			
02:40				3 LEE R substitution out
02:40				23 NATIVI S substitution out
02:40				32 THOMPSON K substitution out
02:40				0 GOETZ E substitution in
02:40				22 MORRIS J substitution in
02:40				44 ROBERSON A substitution in
02:14	23 MOORE I foul shooting (1 - 1)			22 MORRIS J foul drawn (1)
02:14				22 MORRIS J free throw 1 - 2 missed
02:14				offensive dead ball rebound (1)



**Louisiana Tech at Vanderbilt**

12/03/23 Memorial Gymnasium, Nashville  
2023-24 Women's Basketball

**Game Time:** 1:00 PM

**Game Duration:** 1:51

**Attendance:** 1,829

**Officials:** Dee Kanter, Pualani Spurlock-Welsh, Saif Esho

Game Time	VANDY	Score	Diff	LATECH
02:14		<b>15-14</b>	<b>1</b>	22 MORRIS J free throw 2 - 2 made (1)
02:14	11 OLIVER J substitution out			
02:14	24 MAKURAT A substitution out			
02:14	3 CAMBRIDGE J substitution in			
02:14	12 PIERRE K substitution in			
01:56	35 WASHINGTON S 2pt FG in the paint, driving layup made (11)	<b>17-14</b>	<b>3</b>	
01:35	4 GREENE M foul personal (1 - 2)			22 MORRIS J foul drawn (2)
01:15				22 MORRIS J 3pt FG , jump shot missed
01:12	3 CAMBRIDGE J defensive rebound (4)			
01:08	35 WASHINGTON S 2pt FG in the paint, hook shot missed			
01:05				34 ANGOI A defensive rebound (2)
00:58		<b>17-16</b>	<b>1</b>	44 ROBERSON A 2pt FG in the paint, layup made (4)
00:58				10 BATES S assist (1)
00:34	12 PIERRE K 2pt FG outside the paint, jump shot missed			
00:31				44 ROBERSON A defensive rebound (2)
00:27	35 WASHINGTON S steal (3)			22 MORRIS J turnover bad pass (1)
00:05	35 WASHINGTON S turnover bad pass (1)			
00:05	35 WASHINGTON S substitution out			
00:05	11 OLIVER J substitution in			
00:05				10 BATES S substitution out
00:05				34 ANGOI A substitution out
00:05				23 NATIVI S substitution in
00:05				33 WURM M substitution in
00:01	3 CAMBRIDGE J steal (1)			33 WURM M turnover bad pass (2)
00:01	3 CAMBRIDGE J foul drawn (1)			33 WURM M foul shooting (2 - 2)
00:01	3 CAMBRIDGE J free throw fast break 1 - 2 made (3)	<b>18-16</b>	<b>2</b>	
00:01	3 CAMBRIDGE J free throw fast break 2 - 2 made (4)	<b>19-16</b>	<b>3</b>	
<b>END OF PERIOD</b>				
<b>VANDY 19-16 LATECH</b>				



**Officials:** Dee Kanter, Pualani Spurlock-Welsh, Saif Esho

**Louisiana Tech - 16**

NO.	Name	F	Min	FG			Rebounds			Fouls		TP	AS	TO	ST	Blocks		+/-
				M-A	3P	FT	OR	DR	TOT	PF	FD					BS	BA	
33	Mackenzie Wurm	F	04:01	0-1	0-0	0-0	0	0	0	2	0	0	0	2	0	1	0	-5
44	Anna Larr Roberson	F	07:54	2-2	0-0	0-0	1	1	2	0	0	4	0	0	0	0	0	-4
10	Salma Bates	G	09:55	3-5	2-4	0-0	0	0	0	0	0	8	1	1	2	0	0	-1
22	Jianna Morris	G	07:54	0-1	0-1	1-2	0	0	0	0	2	1	1	1	0	0	0	-4
23	Silvia Nativi	G	07:25	1-2	1-2	0-0	0	1	1	0	0	3	1	0	0	0	0	-4
3	Robyn Lee		03:24	0-1	0-0	0-0	0	0	0	0	0	0	1	0	0	0	0	1
32	Kate Thompson		02:06	0-0	0-0	0-0	0	0	0	0	0	0	0	0	0	0	0	1
34	Ayen Angoi		04:41	0-0	0-0	0-0	0	2	2	0	0	0	0	1	0	0	0	2
0	Evie Goetz		02:40	0-0	0-0	0-0	0	0	0	0	0	0	0	0	0	0	0	-1
Team							0	0	0		0		0					
<b>Totals</b>				6-12	3-7	1-2	1	4	5	2	2	16	4	5	2	1	0	-3

Shooting By Period		
1st FG%	6-12	50.0%
3PT%	3-7	42.9%
FT%	1-2	50%
GM FG%	6-12	50.0%
3PT%	3-7	42.9%
FT%	1-2	50.0%

Dead Ball Rebounds: 1, 0

Technical Fouls::NONE

**Vanderbilt - 19**

NO.	Name	F	Min	FG			Rebounds			Fouls		TP	AS	TO	ST	Blocks		+/-
				M-A	3P	FT	OR	DR	TOT	PF	FD					BS	BA	
35	Sacha Washington	F	07:49	5-6	0-0	1-2	2	0	2	0	1	11	0	1	3	0	0	2
3	Jordyn Cambridge	G	09:34	1-4	0-2	2-2	1	3	4	0	1	4	0	0	1	0	0	4
11	Jordyn Oliver	G	05:54	1-1	0-0	0-0	1	0	1	0	0	2	2	2	1	0	0	1
13	Justine Pissott	G	05:14	0-0	0-0	0-0	0	1	1	0	0	0	2	0	0	0	0	3
23	Iyana Moore	G	07:54	0-3	0-2	0-0	0	0	0	1	0	0	1	0	0	0	1	4
24	Aga Makurat		04:29	1-2	0-1	0-0	0	1	1	0	0	2	0	1	0	0	0	0
4	Madison Greene		04:46	0-0	0-0	0-0	0	0	0	1	0	0	0	0	0	0	0	0
12	Khamil Pierre		04:20	0-2	0-0	0-0	1	0	1	0	0	0	1	0	0	0	0	1
Team							1	0	1		0		0					
<b>Totals</b>				8-18	0-5	3-4	6	5	11	2	2	19	6	4	5	0	1	3

Shooting By Period		
1st FG%	8-18	44.4%
3PT%	0-5	0.0%
FT%	3-4	75%
GM FG%	8-18	44.4%
3PT%	0-5	0.0%
FT%	3-4	75.0%

Dead Ball Rebounds: 1, 0

Technical Fouls::NONE

	LATECH	VANDY
Biggest lead	2 (1 <sup>st</sup> 3:53)	4 (1 <sup>st</sup> 8:28)
Best Scoring Run	5(1 <sup>st</sup> 3:53)	4(1 <sup>st</sup> 8:28)
Lead Changes	2	
Times Tied	2	
Time with Lead	00:28	07:38

Points from	LATECH	VANDY
Turnovers	4	5
Paint	6	16
Second Chance	2	8
Fast Breaks	3	5
Bench	0	2

	Period by Period Scoring				
	1st	2nd	3rd	4th	TOT
LATECH	16	10	15	22	63
VANDY	19	11	24	17	71



**Period 2**

**Quarter Starters:**

<b>VANDY</b>	3 Cambridge J	11 Oliver J	13 Pissott J	23 Moore I	35 Washington S
<b>LATECH</b>	10 Bates S	22 Morris J	23 Nativi S	33 Wurm M	44 Roberson A

Game Time	VANDY	Score	Diff	LATECH
10:00	4 GREENE M substitution out			
10:00	12 PIERRE K substitution out			
10:00	13 PISSOTT J substitution in			
10:00	35 WASHINGTON S substitution in			
10:00				0 GOETZ E substitution out
10:00				10 BATES S substitution in
09:36		<b>19-18</b>	<b>1</b>	33 WURM M 2pt FG outside the paint, turnaround jump shot made (2)
09:36				23 NATIVI S assist (2)
09:14	35 WASHINGTON S turnover bad pass (2)			44 ROBERSON A steal (1)
08:56				10 BATES S 3pt FG from turnover, jump shot missed
08:54				offensive rebound (6)
08:51	jump ball situation			
08:51	3 CAMBRIDGE J steal (2)			33 WURM M turnover lost ball (3)
08:30	35 WASHINGTON S 2pt FG from turnover in the paint, layup made (13)	<b>21-18</b>	<b>3</b>	
08:30	11 OLIVER J assist (3)			
08:06				33 WURM M 2pt FG outside the paint, jump shot blocked
08:06	35 WASHINGTON S block (1)			
08:06				offensive rebound (7)
08:03	11 OLIVER J steal (2)			33 WURM M turnover lost ball (4)
07:57	35 WASHINGTON S 2pt FG fast break from turnover in the paint, layup made (15)	<b>23-18</b>	<b>5</b>	
07:57	23 MOORE I assist (2)			
07:46	11 OLIVER J foul personal (1 - 1)			44 ROBERSON A foul drawn (1)
07:46				33 WURM M substitution out
07:46				32 THOMPSON K substitution in
07:20				turnover shot clock (8)
06:57	23 MOORE I 3pt FG from turnover, jump shot missed			
06:54				32 THOMPSON K defensive rebound (1)
06:47		<b>23-20</b>	<b>3</b>	44 ROBERSON A 2pt FG in the paint, jump shot made (6)
06:47				23 NATIVI S assist (3)
06:47	13 PISSOTT J foul shooting (1 - 2)			44 ROBERSON A foul drawn (2)
06:47	13 PISSOTT J substitution out			
06:47	23 MOORE I substitution out			
06:47	4 GREENE M substitution in			
06:47	24 MAKURAT A substitution in			
06:47				44 ROBERSON A free throw 1 - 1 missed
06:47				offensive rebound (9)
06:25				turnover shot clock (9)
06:07	4 GREENE M 2pt FG from turnover outside the paint, jump shot missed			
06:04				10 BATES S defensive rebound (1)
05:56				22 MORRIS J 2pt FG outside the paint, jump shot missed



**Louisiana Tech at Vanderbilt**

12/03/23 Memorial Gymnasium, Nashville  
2023-24 Women's Basketball

**Game Time:** 1:00 PM  
**Game Duration:** 1:51  
**Attendance:** 1,829

**Officials:** Dee Kanter, Pualani Spurlock-Welsh, Saif Esho

Game Time	VANDY	Score	Diff	LATECH
05:53				32 THOMPSON K offensive rebound (2)
05:41	35 WASHINGTON S steal (4)			23 NATIVI S turnover bad pass (1)
05:35	24 MAKURAT A 3pt FG from turnover, jump shot missed			
05:31				23 NATIVI S defensive rebound (2)
05:26	11 OLIVER J foul shooting (2 - 3)			10 BATES S foul drawn (1)
05:26	11 OLIVER J substitution out			
05:26	5 ALLEN R substitution in			
05:26		<b>23-21</b>	<b>2</b>	10 BATES S free throw 1 - 3 made (9)
05:26		<b>23-22</b>	<b>1</b>	10 BATES S free throw 2 - 3 made (10)
05:26		<b>23-23</b>	<b>0</b>	10 BATES S free throw 3 - 3 made (11)
05:09	3 CAMBRIDGE J 3pt FG , jump shot missed			
05:05				22 MORRIS J defensive rebound (1)
04:51				32 THOMPSON K 2pt FG outside the paint, jump shot missed
04:48	3 CAMBRIDGE J defensive rebound (5)			
04:41	4 GREENE M 3pt FG fast break, jump shot made (3)	<b>26-23</b>	<b>3</b>	
04:41	5 ALLEN R assist (1)			
04:31				23 NATIVI S turnover travel (2)
04:31	Timeout media			
04:31				32 THOMPSON K substitution out
04:31				34 ANGOI A substitution in
04:18	35 WASHINGTON S 2pt FG from turnover in the paint, layup made (17)	<b>28-23</b>	<b>5</b>	
04:18	24 MAKURAT A assist (1)			
04:07				turnover 10 sec back court (12)
03:48	4 GREENE M 2pt FG from turnover in the paint, layup missed			
03:48				defensive rebound (14)
03:38	35 WASHINGTON S foul personal (1 - 4)			22 MORRIS J foul drawn (3)
03:35				44 ROBERSON A 2pt FG outside the paint, jump shot missed
03:35	24 MAKURAT A defensive rebound (2)			
03:35	24 MAKURAT A foul drawn (1)			34 ANGOI A foul personal (1 - 1)
03:24	3 CAMBRIDGE J 2pt FG outside the paint, jump shot missed			
03:20				44 ROBERSON A defensive rebound (3)
03:11				23 NATIVI S 3pt FG , jump shot missed
03:08	defensive rebound (14)			
03:08				44 ROBERSON A substitution out
03:08				3 LEE R substitution in
02:50	35 WASHINGTON S 2pt FG in the paint, driving layup made (19)	<b>30-23</b>	<b>7</b>	
02:50	3 CAMBRIDGE J assist (1)			
02:31				3 LEE R 2pt FG outside the paint, jump shot missed
02:29	24 MAKURAT A defensive rebound (3)			
02:21	24 MAKURAT A foul drawn (2)			3 LEE R foul personal (1 - 2)
02:21	35 WASHINGTON S substitution out			
02:21	12 PIERRE K substitution in			
02:21				34 ANGOI A substitution out
02:21				32 THOMPSON K substitution in
02:16	3 CAMBRIDGE J 2pt FG in the paint, jump shot blocked			
02:16				32 THOMPSON K block (1)
02:12	3 CAMBRIDGE J offensive rebound (6)			
02:09	24 MAKURAT A 3pt FG second chance, jump shot missed			



Official Basketball Play by Play - 2nd Period

### Louisiana Tech at Vanderbilt

12/03/23 Memorial Gymnasium, Nashville  
2023-24 Women's Basketball

Game Time: 1:00 PM

Game Duration: 1:51

Attendance: 1,829

Officials: Dee Kanter, Pualani Spurlock-Welsh, Saif Esho

Game Time	VANDY	Score	Diff	LATECH
02:06				32 THOMPSON K defensive rebound (3)
01:54	12 PIERRE K foul shooting (1 - 5)			32 THOMPSON K foul drawn (1)
01:54		<b>30-24</b>	<b>6</b>	32 THOMPSON K free throw 1 - 2 made (1)
01:54				32 THOMPSON K free throw 2 - 2 missed
01:52	12 PIERRE K defensive rebound (2)			
01:43	5 ALLEN R substitution out			
01:43	24 MAKURAT A substitution out			
01:43	13 PISSOTT J substitution in			
01:43	23 MOORE I substitution in			
01:43				3 LEE R substitution out
01:43				44 ROBERSON A substitution in
01:26	turnover shot clock (6)			
01:15				10 BATES S 3pt FG from turnover, jump shot missed
01:12	12 PIERRE K defensive rebound (3)			
00:47	12 PIERRE K 2pt FG in the paint, jump shot blocked			
00:47				23 NATIVI S block (1)
00:43				32 THOMPSON K defensive rebound (4)
00:43	jump ball situation			
00:34		<b>30-26</b>	<b>4</b>	23 NATIVI S 2pt FG fast break in the paint, layup made (5)
<b>END OF PERIOD</b>				
<b>VANDY 30-26 LATECH</b>				





Louisiana Tech at Vanderbilt

12/03/23 Memorial Gymnasium, Nashville  
2023-24 Women's Basketball

Game Time: 1:00 PM  
Game Duration: 1:51  
Attendance: 1,829

Officials: Dee Kanter, Pualani Spurlock-Welsh, Saif Esho

Louisiana Tech - 10

NO.	Name	F	Min	FG			Rebounds			Fouls		TP	AS	TO	ST	Blocks		+/-
				M-A	M-A	M-A	OR	DR	TOT	PF	FD					BS	BA	
33	Mackenzie Wurm	F	02:14	1-2	0-0	0-0	0	0	0	0	0	2	0	2	0	0	1	-2
44	Anna Larr Roberson	F	08:35	1-2	0-0	0-1	0	1	1	0	2	2	0	0	1	0	0	0
10	Salma Bates	G	10:00	0-2	0-2	3-3	0	1	1	0	1	3	0	0	0	0	0	-1
22	Jianna Morris	G	10:00	0-1	0-0	0-0	0	1	1	0	1	0	0	0	0	0	0	-1
23	Silvia Nativi	G	10:00	1-2	0-1	0-0	0	1	1	0	0	2	2	2	0	1	0	-1
0	Evie Goetz		00:00	0-0	0-0	0-0	0	0	0	0	0	0	0	0	0	0	0	0
32	Kate Thompson		05:36	0-1	0-0	1-2	1	3	4	0	1	1	0	0	0	1	0	5
34	Ayen Angoi		02:10	0-0	0-0	0-0	0	0	0	1	0	0	0	0	0	0	0	-4
3	Robyn Lee		01:25	0-1	0-0	0-0	0	0	0	1	0	0	0	0	0	0	0	-1
Team							3	1	4		0		3					
<b>Totals</b>				3-11	0-3	4-6	4	8	12	2	5	10	2	7	1	2	1	-1

Shooting By Period		
2 <sup>nd</sup> FG%	3-11	27.3%
3PT%	0-3	0.0%
FT%	4-6	66.7%
GM FG%	3-11	27.3%
3PT%	0-3	0.0%
FT%	4-6	66.7%

Dead Ball Rebounds: 0, 0

Technical Fouls::NONE

Vanderbilt - 11

NO.	Name	F	Min	FG			Rebounds			Fouls		TP	AS	TO	ST	Blocks		+/-
				M-A	M-A	M-A	OR	DR	TOT	PF	FD					BS	BA	
35	Sacha Washington	F	07:39	4-4	0-0	0-0	0	0	0	1	0	8	0	1	1	1	0	4
3	Jordyn Cambridge	G	10:00	0-3	0-1	0-0	1	1	2	0	0	0	1	0	1	0	1	1
11	Jordyn Oliver	G	04:34	0-0	0-0	0-0	0	0	0	2	0	0	1	0	1	0	0	0
13	Justine Pissott	G	04:56	0-0	0-0	0-0	0	0	0	1	0	0	0	0	0	0	0	-2
23	Iyana Moore	G	04:56	0-1	0-1	0-0	0	0	0	0	0	0	1	0	0	0	0	-2
4	Madison Greene		06:47	1-3	1-1	0-0	0	0	0	0	0	3	0	0	0	0	0	1
24	Aga Makurat		05:04	0-2	0-2	0-0	0	2	2	0	2	0	1	0	0	0	0	3
5	Ryanne Allen		03:43	0-0	0-0	0-0	0	0	0	0	0	0	1	0	0	0	0	3
12	Khamil Pierre		02:21	0-1	0-0	0-0	0	2	2	1	0	0	0	0	0	0	1	-3
Team							0	1	1		0		1					
<b>Totals</b>				5-14	1-5	0-0	1	6	7	5	2	11	5	2	3	1	2	1

Shooting By Period		
2 <sup>nd</sup> FG%	5-14	35.7%
3PT%	1-5	20.0%
FT%	0-0	0%
GM FG%	5-14	35.7%
3PT%	1-5	20.0%
FT%	0-0	0.0%

Dead Ball Rebounds: 0, 0

Technical Fouls::NONE

	LATECH	VANDY
Biggest lead	0 (1 <sup>st</sup> 10:00)	7 (2 <sup>nd</sup> 2:50)
Best Scoring Run	5(2 <sup>nd</sup> 5:26)	7(2 <sup>nd</sup> 2:50)
Lead Changes	0	
Times Tied	1	
Time with Lead	00:00	08:51

Points from	LATECH	VANDY
Turnovers	0	6
Paint	4	8
Second Chance	0	0
Fast Breaks	2	5
Bench	1	3

	Period by Period Scoring				
	1st	2nd	3rd	4th	TOT
LATECH	16	10	15	22	63
VANDY	19	11	24	17	71



Officials: Dee Kanter, Pualani Spurlock-Welsh, Saif Esho

Louisiana Tech - 26

NO.	Name	F	Min	FG	3P	FT	Rebounds			Fouls		TP	AS	TO	ST	Blocks		+/-
				M-A	M-A	M-A	OR	DR	TOT	PF	FD					BS	BA	
33	Mackenzie Wurm	F	06:15	1-3	0-0	0-0	0	0	0	2	0	2	0	4	0	1	1	-7
44	Anna Larr Roberson	F	16:29	3-4	0-0	0-1	1	2	3	0	2	6	0	0	1	0	0	-4
10	Salma Bates	G	19:55	3-7	2-6	3-3	0	1	1	0	1	11	1	1	2	0	0	-2
22	Jianna Morris	G	17:54	0-2	0-1	1-2	0	1	1	0	3	1	1	1	0	0	0	-5
23	Silvia Nativi	G	17:25	2-4	1-3	0-0	0	2	2	0	0	5	3	2	0	1	0	-5
3	Robyn Lee		04:49	0-2	0-0	0-0	0	0	0	1	0	0	1	0	0	0	0	0
32	Kate Thompson		07:42	0-1	0-0	1-2	1	3	4	0	1	1	0	0	0	1	0	6
34	Ayen Angoi		06:51	0-0	0-0	0-0	0	2	2	1	0	0	0	1	0	0	0	-2
0	Evie Goetz		02:40	0-0	0-0	0-0	0	0	0	0	0	0	0	0	0	0	0	-1
Team							3	1	4			0		3				
<b>Totals</b>				9-23	3-10	5-8	5	12	17	4	7	26	6	12	3	3	1	-4

Shooting By Period		
1 <sup>st</sup> FG%	6-12	50.0%
3PT%	3-7	42.9%
FT%	1-2	50%
2 <sup>nd</sup> FG%	3-11	27.3%
3PT%	0-3	0.0%
FT%	4-6	66.7%
GM FG%	9-23	39.1%
3PT%	3-10	30.0%
FT%	5-8	62.5%

Dead Ball Rebounds: 1, 0

Technical Fouls::NONE

Vanderbilt - 30

NO.	Name	F	Min	FG	3P	FT	Rebounds			Fouls		TP	AS	TO	ST	Blocks		+/-
				M-A	M-A	M-A	OR	DR	TOT	PF	FD					BS	BA	
35	Sacha Washington	F	15:28	9-10	0-0	1-2	2	0	2	1	1	19	0	2	4	1	0	6
3	Jordyn Cambridge	G	19:34	1-7	0-3	2-2	2	4	6	0	1	4	1	0	2	0	1	5
11	Jordyn Oliver	G	10:28	1-1	0-0	0-0	1	0	1	2	0	2	3	2	2	0	0	1
13	Justine Pissott	G	10:10	0-0	0-0	0-0	0	1	1	1	0	0	2	0	0	0	0	1
23	Iyana Moore	G	12:50	0-4	0-3	0-0	0	0	0	1	0	0	2	0	0	0	1	2
24	Aga Makurat		09:33	1-4	0-3	0-0	0	3	3	0	2	2	1	1	0	0	0	3
4	Madison Greene		11:33	1-3	1-1	0-0	0	0	0	1	0	3	0	0	0	0	0	1
12	Khamil Pierre		06:41	0-3	0-0	0-0	1	2	3	1	0	0	1	0	0	0	1	-2
5	Ryanne Allen		03:43	0-0	0-0	0-0	0	0	0	0	0	0	1	0	0	0	0	3
Team							1	1	2			0		1				
<b>Totals</b>				13-32	1-10	3-4	7	11	18	7	4	30	11	6	8	1	3	4

Shooting By Period		
1 <sup>st</sup> FG%	8-18	44.4%
3PT%	0-5	0.0%
FT%	3-4	75%
2 <sup>nd</sup> FG%	5-14	35.7%
3PT%	1-5	20.0%
FT%	0-0	0%
GM FG%	13-32	40.6%
3PT%	1-10	10.0%
FT%	3-4	75.0%

Dead Ball Rebounds: 1, 0

Technical Fouls::NONE

	LATECH	VANDY
Biggest lead	2 (1 <sup>st</sup> 3:53)	7 (2 <sup>nd</sup> 2:50)
Best Scoring Run	5(1 <sup>st</sup> 3:53)	7(2 <sup>nd</sup> 2:50)
Lead Changes	2	
Times Tied	3	
Time with Lead	00:28	16:53

Points from	LATECH	VANDY
Turnovers	4	11
Paint	10	24
Second Chance	2	8
Fast Breaks	5	10
Bench	1	5

	Period by Period Scoring				
	1st	2nd	3rd	4th	TOT
LATECH	16	10	15	22	63
VANDY	19	11	24	17	71



**Period 3**

**Quarter Starters:**

<b>VANDY</b>	3 Cambridge J	11 Oliver J	13 Pissott J	23 Moore I	35 Washington S
<b>LATECH</b>	10 Bates S	22 Morris J	23 Nativi S	32 Thompson K	44 Roberson A

Game Time	VANDY	Score	Diff	LATECH
10:00	4 GREENE M substitution out			
10:00	12 PIERRE K substitution out			
10:00	11 OLIVER J substitution in			
10:00	35 WASHINGTON S substitution in			
09:48	3 CAMBRIDGE J 2pt FG outside the paint, jump shot missed			
09:48				32 THOMPSON K defensive rebound (5)
09:38				22 MORRIS J 3pt FG , jump shot missed
09:38	11 OLIVER J defensive rebound (2)			
09:38	23 MOORE I turnover bad pass (1)			32 THOMPSON K steal (1)
09:36				23 NATIVI S turnover bad pass (3)
09:16	35 WASHINGTON S 2pt FG from turnover in the paint, layup made (21)	<b>32-26</b>	<b>6</b>	
09:16	3 CAMBRIDGE J assist (2)			
08:48				23 NATIVI S 3pt FG , jump shot missed
08:45	13 PISSOTT J defensive rebound (2)			
08:38	35 WASHINGTON S 2pt FG in the paint, layup missed			
08:35				32 THOMPSON K defensive rebound (6)
08:30				44 ROBERSON A 2pt FG in the paint, jump shot blocked
08:30	35 WASHINGTON S block (2)			
08:24	23 MOORE I defensive rebound (1)			
08:24	3 CAMBRIDGE J 2pt FG in the paint, layup missed			
08:24	3 CAMBRIDGE J offensive rebound (7)			
08:24	3 CAMBRIDGE J foul drawn (2)			32 THOMPSON K foul shooting (1 - 1)
08:24				23 NATIVI S substitution out
08:24				45 BUKVIC A substitution in
08:24	3 CAMBRIDGE J free throw fast break 1 - 2 made (5)	<b>33-26</b>	<b>7</b>	
08:23	3 CAMBRIDGE J free throw fast break 2 - 2 missed			
08:22				32 THOMPSON K defensive rebound (7)
08:22	35 WASHINGTON S foul personal (2 - 1)			32 THOMPSON K foul drawn (2)
08:22	23 MOORE I substitution out			
08:22	4 GREENE M substitution in			
07:58	4 GREENE M steal (1)			32 THOMPSON K turnover bad pass (1)
07:53	4 GREENE M 2pt FG fast break from turnover in the paint, driving layup made (5)	<b>35-26</b>	<b>9</b>	
07:40				Timeout 30 Sec
07:40				Timeout media
07:40				22 MORRIS J substitution out
07:40				23 NATIVI S substitution in
06:44	13 PISSOTT J foul drawn (1)			45 BUKVIC A foul offensive (1 - 2)
06:44				45 BUKVIC A turnover offensive (1)
06:32	35 WASHINGTON S foul drawn (2)			23 NATIVI S foul personal (1 - 3)
06:30	13 PISSOTT J 2pt FG from turnover in the paint, layup made (2)	<b>37-26</b>	<b>11</b>	
06:30	3 CAMBRIDGE J assist (3)			
06:19				44 ROBERSON A 2pt FG in the paint, layup missed



**Louisiana Tech at Vanderbilt**

12/03/23 Memorial Gymnasium, Nashville  
2023-24 Women's Basketball

**Game Time:** 1:00 PM  
**Game Duration:** 1:51  
**Attendance:** 1,829

**Officials:** Dee Kanter, Pualani Spurlock-Welsh, Saif Esho

Game Time	VANDY	Score	Diff	LATECH
06:16	11 OLIVER J defensive rebound (3)			
06:10	4 GREENE M 3pt FG , jump shot made (8)	<b>40-26</b>	<b>14</b>	
06:10	11 OLIVER J assist (4)			
05:46		<b>40-29</b>	<b>11</b>	44 ROBERSON A 3pt FG , jump shot made (9)
05:46				23 NATIVI S assist (4)
05:30	13 PISSOTT J 3pt FG , jump shot made (5)	<b>43-29</b>	<b>14</b>	
05:30	4 GREENE M assist (1)			
05:15		<b>43-31</b>	<b>12</b>	44 ROBERSON A 2pt FG in the paint, layup made (11)
05:15				23 NATIVI S assist (5)
04:59	11 OLIVER J 2pt FG outside the paint, jump shot missed			
04:56	35 WASHINGTON S offensive rebound (3)			
04:51	35 WASHINGTON S turnover lost ball (3)			10 BATES S steal (3)
04:48				10 BATES S 2pt FG from turnover in the paint, layup missed
04:48	3 CAMBRIDGE J defensive rebound (8)			
04:48	3 CAMBRIDGE J turnover lost ball (1)			10 BATES S steal (4)
04:48	3 CAMBRIDGE J foul personal (1 - 2)			10 BATES S foul drawn (2)
04:48	Timeout media			
04:48	13 PISSOTT J substitution out			
04:48	24 MAKURAT A substitution in			
04:48				32 THOMPSON K substitution out
04:48				45 BUKVIC A substitution out
04:48				22 MORRIS J substitution in
04:48				34 ANGOI A substitution in
04:43	35 WASHINGTON S steal (5)			10 BATES S turnover lost ball (2)
04:24	4 GREENE M 3pt FG from turnover, jump shot made (11)	<b>46-31</b>	<b>15</b>	
04:24	3 CAMBRIDGE J assist (4)			
04:12	35 WASHINGTON S steal (6)			22 MORRIS J turnover lost ball (2)
04:08	35 WASHINGTON S 2pt FG fast break from turnover in the paint, driving layup made (23)	<b>48-31</b>	<b>17</b>	
03:55	11 OLIVER J foul shooting (3 - 3)			22 MORRIS J foul drawn (4)
03:55	11 OLIVER J substitution out			
03:55	12 PIERRE K substitution in			
03:55		<b>48-32</b>	<b>16</b>	22 MORRIS J free throw 1 - 2 made (2)
03:55		<b>48-33</b>	<b>15</b>	22 MORRIS J free throw 2 - 2 made (3)
03:55				22 MORRIS J substitution out
03:55				3 LEE R substitution in
03:44	12 PIERRE K turnover bad pass (1)			34 ANGOI A steal (1)
03:23	12 PIERRE K foul drawn (1)			23 NATIVI S foul offensive (2 - 4)
03:23				23 NATIVI S turnover offensive (4)
03:12	4 GREENE M 3pt FG from turnover, jump shot missed			
03:07				44 ROBERSON A defensive rebound (4)
02:59				10 BATES S 2pt FG in the paint, layup missed
02:56				3 LEE R offensive rebound (1)
02:55		<b>48-35</b>	<b>13</b>	3 LEE R 2pt FG second chance in the paint, jump shot made (2)
02:38	3 CAMBRIDGE J 2pt FG in the paint, driving layup made (7)	<b>50-35</b>	<b>15</b>	
02:24		<b>50-37</b>	<b>13</b>	44 ROBERSON A 2pt FG outside the paint, jump shot made (13)
02:24				10 BATES S assist (2)
02:02	4 GREENE M foul offensive (2 - 4)			3 LEE R foul drawn (1)
02:02	4 GREENE M turnover offensive (1)			



Official Basketball Play by Play - 3rd Period

**Louisiana Tech at Vanderbilt**

12/03/23 Memorial Gymnasium, Nashville  
2023-24 Women's Basketball

**Game Time:** 1:00 PM

**Game Duration:** 1:51

**Attendance:** 1,829

**Officials:** Dee Kanter, Pualani Spurlock-Welsh, Saif Esho

Game Time	VANDY	Score	Diff	LATECH
02:02	12 PIERRE K substitution out			
02:02	5 ALLEN R substitution in			
01:52				23 NATIVI S turnover travel (5)
01:41	24 MAKURAT A 3pt FG from turnover, jump shot made (5)	<b>53-37</b>	<b>16</b>	
01:41	4 GREENE M assist (2)			
01:24		<b>53-39</b>	<b>14</b>	44 ROBERSON A 2pt FG outside the paint, jump shot made (15)
01:24				23 NATIVI S assist (6)
01:11	5 ALLEN R 3pt FG , jump shot missed			
01:11	35 WASHINGTON S offensive rebound (4)			
01:11	35 WASHINGTON S foul drawn (3)			34 ANGOI A foul personal (2 - 5)
01:11	35 WASHINGTON S free throw 1 - 2 missed			
01:11	offensive dead ball rebound (2)			
01:11	35 WASHINGTON S free throw 2 - 2 made (24)	<b>54-39</b>	<b>15</b>	
00:53	5 ALLEN R steal (1)			23 NATIVI S turnover bad pass (6)
00:43	4 GREENE M 3pt FG from turnover, jump shot missed			
00:41				defensive rebound (23)
00:14		<b>54-41</b>	<b>13</b>	3 LEE R 2pt FG outside the paint, jump shot made (4)
00:00	4 GREENE M 3pt FG , jump shot missed			
00:00				3 LEE R defensive rebound (2)
<b>END OF PERIOD</b>				
<b>VANDY 54-41 LATECH</b>				



**Officials:** Dee Kanter, Pualani Spurlock-Welsh, Saif Esho

**Louisiana Tech - 15**

NO.	Name	F	Min	FG			Rebounds			Fouls		TP	AS	TO	ST	Blocks		+/-
				M-A	M-A	M-A	OR	DR	TOT	PF	FD					BS	BA	
33	Mackenzie Wurm	F	00:00	0-0	0-0	0-0	0	0	0	0	0	0	0	0	0	0	0	0
44	Anna Larr Roberson	F	10:00	4-6	1-1	0-0	0	1	1	0	0	9	0	0	0	0	1	-9
10	Salma Bates	G	10:00	0-2	0-0	0-0	0	0	0	0	1	0	1	1	2	0	0	-9
22	Jianna Morris	G	03:13	0-1	0-1	2-2	0	0	0	0	1	2	0	1	0	0	0	-8
23	Silvia Nativi	G	09:16	0-1	0-1	0-0	0	0	0	2	0	0	3	4	0	0	0	-6
32	Kate Thompson		05:12	0-0	0-0	0-0	0	3	3	1	1	0	0	1	1	0	0	-8
45	Anja Bukvic		03:36	0-0	0-0	0-0	0	0	0	1	0	0	0	1	0	0	0	-6
34	Ayen Angoi		04:48	0-0	0-0	0-0	0	0	0	1	0	0	0	0	1	0	0	-1
3	Robyn Lee		03:55	2-2	0-0	0-0	1	1	2	0	1	4	0	0	0	0	0	2
Team							0	1	1			0		0				
<b>Totals</b>				6-12	1-3	2-2	1	6	7	5	4	15	4	8	4	0	1	-9

Shooting By Period		
3rd FG%	6-12	50.0%
3PT%	1-3	33.3%
FT%	2-2	100%
GM FG%	6-12	50.0%
3PT%	1-3	33.3%
FT%	2-2	100.0%

Dead Ball Rebounds: 0, 0

Technical Fouls::NONE

**Vanderbilt - 24**

NO.	Name	F	Min	FG			Rebounds			Fouls		TP	AS	TO	ST	Blocks		+/-
				M-A	M-A	M-A	OR	DR	TOT	PF	FD					BS	BA	
35	Sacha Washington	F	10:00	2-3	0-0	1-2	2	0	2	1	2	5	0	1	2	1	0	9
3	Jordyn Cambridge	G	10:00	1-3	0-0	1-2	1	1	2	1	1	3	3	1	0	0	0	9
11	Jordyn Oliver	G	06:05	0-1	0-0	0-0	0	2	2	1	0	0	1	0	0	0	0	13
13	Justine Pissott	G	05:12	2-2	1-1	0-0	0	1	1	0	1	5	0	0	0	0	0	8
23	Iyana Moore	G	01:38	0-0	0-0	0-0	0	1	1	0	0	0	0	1	0	0	0	3
4	Madison Greene		08:22	3-6	2-5	0-0	0	0	0	1	0	8	2	1	1	0	0	6
24	Aga Makurat		04:48	1-1	1-1	0-0	0	0	0	0	0	3	0	0	0	0	0	1
12	Khamil Pierre		01:53	0-0	0-0	0-0	0	0	0	0	1	0	0	1	0	0	0	-4
5	Ryanne Allen		02:02	0-1	0-1	0-0	0	0	0	0	0	0	0	0	1	0	0	0
Team							0	0	0			0		0				
<b>Totals</b>				9-17	4-8	2-4	3	5	8	4	5	24	6	5	4	1	0	9

Shooting By Period		
3rd FG%	9-17	52.9%
3PT%	4-8	50.0%
FT%	2-4	50%
GM FG%	9-17	52.9%
3PT%	4-8	50.0%
FT%	2-4	50.0%

Dead Ball Rebounds: 1, 0

Technical Fouls::NONE

	LATECH	VANDY
<b>Biggest lead</b>	0 (1 <sup>st</sup> 10:00)	17 (3 <sup>rd</sup> 4:08)
<b>Best Scoring Run</b>	4 (3 <sup>rd</sup> 2:55)	10 (3 <sup>rd</sup> 6:10)
<b>Lead Changes</b>	0	
<b>Times Tied</b>	0	
<b>Time with Lead</b>	00:00	09:48

Points from	LATECH	VANDY
<b>Turnovers</b>	0	14
<b>Paint</b>	4	10
<b>Second Chance</b>	2	2
<b>Fast Breaks</b>	0	5
<b>Bench</b>	4	11

	Period by Period Scoring				
	1st	2nd	3rd	4th	TOT
<b>LATECH</b>	16	10	15	22	63
<b>VANDY</b>	19	11	24	17	71



**Period 4**

**Quarter Starters:**

<b>VANDY</b>	3 Cambridge J	11 Oliver J	13 Pissott J	23 Moore I	35 Washington S
<b>LATECH</b>	0 Goetz E	10 Bates S	23 Nativi S	32 Thompson K	34 Angoi A

Game Time	VANDY	Score	Diff	LATECH
10:00	4 GREENE M substitution out			
10:00	5 ALLEN R substitution out			
10:00	24 MAKURAT A substitution out			
10:00	11 OLIVER J substitution in			
10:00	13 PISSOTT J substitution in			
10:00	23 MOORE I substitution in			
10:00				3 LEE R substitution out
10:00				44 ROBERSON A substitution out
10:00				0 GOETZ E substitution in
10:00				32 THOMPSON K substitution in
09:50	13 PISSOTT J 3pt FG , jump shot missed			
09:45	35 WASHINGTON S offensive rebound (5)			
09:44	35 WASHINGTON S 2pt FG second chance in the paint, layup missed			
09:44				34 ANGOI A defensive rebound (3)
09:28	13 PISSOTT J foul personal (2 - 1)			23 NATIVI S foul drawn (1)
09:28	Timeout media			
09:07				23 NATIVI S 3pt FG , jump shot missed
09:07				offensive rebound (26)
09:07				0 GOETZ E substitution out
09:07				34 ANGOI A substitution out
09:07				22 MORRIS J substitution in
09:07				44 ROBERSON A substitution in
09:05	3 CAMBRIDGE J steal (3)			23 NATIVI S turnover bad pass (7)
08:58	13 PISSOTT J turnover bad pass (1)			32 THOMPSON K steal (2)
08:44	35 WASHINGTON S steal (7)			23 NATIVI S turnover lost ball (8)
08:40	11 OLIVER J 2pt FG fast break from turnover in the paint, layup made (4)	<b>56-41</b>	<b>15</b>	
08:40	35 WASHINGTON S assist (1)			
08:16		<b>56-43</b>	<b>13</b>	44 ROBERSON A 2pt FG in the paint, layup made (17)
08:05	35 WASHINGTON S 2pt FG in the paint, hook shot made (26)	<b>58-43</b>	<b>15</b>	
08:05	13 PISSOTT J assist (3)			
07:44				23 NATIVI S turnover bad pass (9)
07:44	13 PISSOTT J substitution out			
07:44	4 GREENE M substitution in			
07:44				23 NATIVI S substitution out
07:44				3 LEE R substitution in
07:28	23 MOORE I turnover travel (2)			
07:18	23 MOORE I foul personal (2 - 2)			3 LEE R foul drawn (2)
07:13				44 ROBERSON A 2pt FG from turnover outside the paint, jump shot missed
07:11	3 CAMBRIDGE J defensive rebound (9)			
07:11	23 MOORE I substitution out			
07:11	24 MAKURAT A substitution in			



**Louisiana Tech at Vanderbilt**

12/03/23 Memorial Gymnasium, Nashville  
2023-24 Women's Basketball

Game Time: 1:00 PM

Game Duration: 1:51

Attendance: 1,829

Officials: Dee Kanter, Pualani Spurlock-Welsh, Saif Esho

Game Time	VANDY	Score	Diff	LATECH
06:56	4 GREENE M 3pt FG , jump shot missed			
06:54	11 OLIVER J offensive rebound (4)			
06:51	24 MAKURAT A 3pt FG second chance, jump shot missed			
06:49	4 GREENE M offensive rebound (1)			
06:49	4 GREENE M foul drawn (1)			32 THOMPSON K foul shooting (2 - 1)
06:49	4 GREENE M free throw 1 - 2 made (12)	<b>59-43</b>	<b>16</b>	
06:49	4 GREENE M free throw 2 - 2 made (13)	<b>60-43</b>	<b>17</b>	
06:37		<b>60-45</b>	<b>15</b>	44 ROBERSON A 2pt FG in the paint, layup made (19)
06:37				3 LEE R assist (2)
06:25	3 CAMBRIDGE J 3pt FG , jump shot missed			
06:22	35 WASHINGTON S offensive rebound (6)			
06:22	35 WASHINGTON S turnover lost ball (4)			32 THOMPSON K steal (3)
05:57		<b>60-47</b>	<b>13</b>	44 ROBERSON A 2pt FG from turnover in the paint, layup made (21)
05:57				10 BATES S assist (3)
05:45	4 GREENE M 2pt FG in the paint, driving layup made (15)	<b>62-47</b>	<b>15</b>	
05:45	11 OLIVER J assist (5)			
05:23		<b>62-49</b>	<b>13</b>	10 BATES S 2pt FG in the paint, layup made (13)
05:11	35 WASHINGTON S 2pt FG in the paint, layup made (28)	<b>64-49</b>	<b>15</b>	
04:55		<b>64-51</b>	<b>13</b>	22 MORRIS J 2pt FG in the paint, layup made (5)
04:44	35 WASHINGTON S 2pt FG in the paint, layup missed			
04:41				32 THOMPSON K defensive rebound (8)
04:33	35 WASHINGTON S steal (8)			10 BATES S turnover bad pass (3)
04:29	3 CAMBRIDGE J foul drawn (3)			3 LEE R foul personal (2 - 2)
04:29				10 BATES S substitution out
04:29				22 MORRIS J substitution out
04:29				0 GOETZ E substitution in
04:29				23 NATIVI S substitution in
04:21	35 WASHINGTON S foul drawn (4)			32 THOMPSON K foul shooting (3 - 3)
04:21				3 LEE R substitution out
04:21				22 MORRIS J substitution in
04:21	35 WASHINGTON S free throw 1 - 2 missed			
04:21	offensive dead ball rebound (3)			
04:21	35 WASHINGTON S free throw 2 - 2 missed			
04:19	3 CAMBRIDGE J offensive rebound (10)			
03:59	35 WASHINGTON S 2pt FG from turnover second chance in the paint, layup blocked			
03:59				32 THOMPSON K block (2)
03:59				22 MORRIS J defensive rebound (2)
03:44				32 THOMPSON K 2pt FG in the paint, jump shot missed
03:44				44 ROBERSON A offensive rebound (5)
03:44	11 OLIVER J foul personal (4 - 3)			44 ROBERSON A foul drawn (3)
03:31		<b>64-53</b>	<b>11</b>	44 ROBERSON A 2pt FG second chance outside the paint, jump shot made (23)
03:31				0 GOETZ E assist (1)
03:09	35 WASHINGTON S 2pt FG in the paint, layup made (30)	<b>66-53</b>	<b>13</b>	
03:09	11 OLIVER J assist (6)			
02:52				44 ROBERSON A 3pt FG , jump shot missed
02:49	24 MAKURAT A defensive rebound (4)			
02:31	35 WASHINGTON S 2pt FG in the paint, layup made (32)	<b>68-53</b>	<b>15</b>	





**Louisiana Tech at Vanderbilt**

12/03/23 Memorial Gymnasium, Nashville  
2023-24 Women's Basketball

Game Time: 1:00 PM

Game Duration: 1:51

Attendance: 1,829

Officials: Dee Kanter, Pualani Spurlock-Welsh, Saif Esho

Game Time	VANDY	Score	Diff	LATECH
02:31	3 CAMBRIDGE J assist (5)			
02:19	4 GREENE M foul shooting (3 - 4)			22 MORRIS J foul drawn (5)
02:19				Timeout 30 Sec
02:19				0 GOETZ E substitution out
02:19				32 THOMPSON K substitution out
02:19				3 LEE R substitution in
02:19				10 BATES S substitution in
02:19		<b>68-54</b>	<b>14</b>	22 MORRIS J free throw 1 - 2 made (6)
02:19		<b>68-55</b>	<b>13</b>	22 MORRIS J free throw 2 - 2 made (7)
02:19	11 OLIVER J substitution out			
02:19	5 ALLEN R substitution in			
02:05	3 CAMBRIDGE J 2pt FG in the paint, layup missed			
02:05	offensive rebound (34)			
02:00	5 ALLEN R turnover bad pass (1)			3 LEE R steal (1)
01:55		<b>68-57</b>	<b>11</b>	3 LEE R 2pt FG fast break from turnover in the paint, jump shot made (6)
01:29	4 GREENE M 2pt FG in the paint, driving layup made (17)	<b>70-57</b>	<b>13</b>	
01:20	5 ALLEN R foul shooting (1 - 5)			3 LEE R foul drawn (3)
01:20	5 ALLEN R substitution out			
01:20	11 OLIVER J substitution in			
01:20		<b>70-58</b>	<b>12</b>	3 LEE R free throw 1 - 2 made (7)
01:20		<b>70-59</b>	<b>11</b>	3 LEE R free throw 2 - 2 made (8)
01:20				44 ROBERSON A substitution out
01:20				34 ANGOI A substitution in
01:00	35 WASHINGTON S foul drawn (5)			10 BATES S foul shooting (1 - 4)
01:00				34 ANGOI A substitution out
01:00				44 ROBERSON A substitution in
01:00	35 WASHINGTON S free throw 1 - 2 missed			
01:00	offensive dead ball rebound (4)			
01:00	35 WASHINGTON S free throw 2 - 2 made (33)	<b>71-59</b>	<b>12</b>	
01:00				Timeout 60 Sec
00:49		<b>71-61</b>	<b>10</b>	44 ROBERSON A 2pt FG in the paint, hook shot made (25)
00:49				23 NATIVI S assist (7)
00:20	4 GREENE M 2pt FG in the paint, layup missed			
00:17				10 BATES S defensive rebound (2)
00:08				22 MORRIS J 3pt FG , jump shot missed
00:06				44 ROBERSON A offensive rebound (6)
00:06		<b>71-63</b>	<b>8</b>	44 ROBERSON A 2pt FG second chance in the paint, layup made (27)
00:06	Timeout 30 Sec			
00:06	35 WASHINGTON S substitution out			
00:06	13 PISSOTT J substitution in			
00:06				44 ROBERSON A substitution out
00:06				34 ANGOI A substitution in
<b>END OF GAME</b>				
<b>VANDY 71-63 LATECH</b>				



Louisiana Tech at Vanderbilt

12/03/23 Memorial Gymnasium, Nashville  
2023-24 Women's Basketball

Game Time: 1:00 PM  
Game Duration: 1:51  
Attendance: 1,829

Officials: Dee Kanter, Pualani Spurlock-Welsh, Saif Esho

Louisiana Tech - 22

NO.	Name	F	Min	FG			Rebounds			Fouls		TP	AS	TO	ST	Blocks		+/-
				M-A	M-A	M-A	OR	DR	TOT	PF	FD					BS	BA	
33	Mackenzie Wurm	F	00:00	0-0	0-0	0-0	0	0	0	0	0	0	0	0	0	0	0	0
44	Anna Larr Roberson	F	08:41	6-8	0-1	0-0	2	0	2	0	1	12	0	0	0	0	0	5
10	Salma Bates	G	07:50	1-1	0-0	0-0	0	1	1	1	0	2	1	1	0	0	0	7
22	Jianna Morris	G	08:59	1-2	0-1	2-2	0	1	1	0	1	4	0	0	0	0	0	5
23	Silvia Nativi	G	06:45	0-1	0-1	0-0	0	0	0	0	1	0	1	3	0	0	0	3
0	Evie Goetz		03:03	0-0	0-0	0-0	0	0	0	0	0	0	1	0	0	0	0	-2
32	Kate Thompson		07:41	0-1	0-0	0-0	0	1	1	2	0	0	0	0	2	1	0	-2
3	Robyn Lee		05:42	1-1	0-0	2-2	0	0	0	1	2	4	1	0	1	0	0	9
34	Ayen Angoi		01:19	0-0	0-0	0-0	0	1	1	0	0	0	0	0	0	0	0	0
Team							1	0	1			0		0				
<b>Totals</b>				9-14	0-3	4-4	3	4	7	4	5	22	4	4	3	1	0	5

Shooting By Period		
4 <sup>th</sup> FG%	9-14	64.3%
3PT%	0-3	0.0%
FT%	4-4	100%
GM FG%	9-14	64.3%
3PT%	0-3	0.0%
FT%	4-4	100.0%

Dead Ball Rebounds: 0, 0

Technical Fouls::NONE

Vanderbilt - 17

NO.	Name	F	Min	FG			Rebounds			Fouls		TP	AS	TO	ST	Blocks		+/-
				M-A	M-A	M-A	OR	DR	TOT	PF	FD					BS	BA	
35	Sacha Washington	F	09:54	4-7	0-0	1-4	2	0	2	0	2	9	1	1	2	0	1	-5
3	Jordyn Cambridge	G	10:00	0-2	0-1	0-0	1	1	2	0	1	0	1	0	1	0	0	-5
11	Jordyn Oliver	G	09:01	1-1	0-0	0-0	1	0	1	1	0	2	2	0	0	0	0	-5
13	Justine Pissott	G	02:22	0-1	0-1	0-0	0	0	0	1	0	0	1	1	0	0	0	2
23	Iyana Moore	G	02:49	0-0	0-0	0-0	0	0	0	1	0	0	0	1	0	0	0	2
4	Madison Greene		07:44	2-4	0-1	2-2	1	0	1	1	1	6	0	0	0	0	0	-7
24	Aga Makurat		07:11	0-1	0-1	0-0	0	1	1	0	0	0	0	0	0	0	0	-7
5	Ryanne Allen		00:59	0-0	0-0	0-0	0	0	0	1	0	0	0	1	0	0	0	0
Team							1	0	1			0		0				
<b>Totals</b>				7-16	0-4	3-6	6	2	8	5	4	17	5	4	3	0	1	-5

Shooting By Period		
4 <sup>th</sup> FG%	7-16	43.8%
3PT%	0-4	0.0%
FT%	3-6	50%
GM FG%	7-16	43.8%
3PT%	0-4	0.0%
FT%	3-6	50.0%

Dead Ball Rebounds: 2, 0

Technical Fouls::NONE

	LATECH	VANDY
Biggest lead	0 (1 <sup>st</sup> 10:00)	17 (4 <sup>th</sup> 6:49)
Best Scoring Run	4(4 <sup>th</sup> 5:57)	4(4 <sup>th</sup> 6:49)
Lead Changes	0	
Times Tied	0	
Time with Lead	00:00	09:50

Points from	LATECH	VANDY
Turnovers	4	2
Paint	16	14
Second Chance	4	2
Fast Breaks	2	2
Bench	4	6

	Period by Period Scoring				
	1st	2nd	3rd	4th	TOT
LATECH	16	10	15	22	63
VANDY	19	11	24	17	71



Louisiana Tech at Vanderbilt

12/03/23 Memorial Gymnasium, Nashville  
2023-24 Women's Basketball

Game Time: 1:00 PM  
Game Duration: 1:51  
Attendance: 1,829

Officials: Dee Kanter, Pualani Spurlock-Welsh, Saif Esho

Louisiana Tech - 37

NO.	Name	F	Min	FG			Rebounds			Fouls		TP	AS	TO	ST	Blocks		+/-
				M-A	M-A	M-A	OR	DR	TOT	PF	FD					BS	BA	
33	Mackenzie Wurm	F	00:00	0-0	0-0	0-0	0	0	0	0	0	0	0	0	0	0	0	0
44	Anna Larr Roberson	F	18:41	10-14	1-2	0-0	2	1	3	0	1	21	0	0	0	0	1	-4
10	Salma Bates	G	17:50	1-3	0-0	0-0	0	1	1	1	1	2	2	2	2	0	0	-2
22	Jianna Morris	G	12:12	1-3	0-2	4-4	0	1	1	0	2	6	0	1	0	0	0	-3
23	Silvia Nativi	G	16:01	0-2	0-2	0-0	0	0	0	2	1	0	4	7	0	0	0	-3
45	Anja Bukvic		03:36	0-0	0-0	0-0	0	0	0	1	0	0	0	1	0	0	0	-6
34	Ayen Angoi		06:07	0-0	0-0	0-0	0	1	1	1	0	0	0	0	1	0	0	-1
3	Robyn Lee		09:37	3-3	0-0	2-2	1	1	2	1	3	8	1	0	1	0	0	11
0	Evie Goetz		03:03	0-0	0-0	0-0	0	0	0	0	0	0	1	0	0	0	0	-2
32	Kate Thompson		12:53	0-1	0-0	0-0	0	4	4	3	1	0	0	1	3	1	0	-10
Team							1	1	2			0		0				
<b>Totals</b>				15-26	1-6	6-6	4	10	14	9	9	37	8	12	7	1	1	-4

Shooting By Period		
3 <sup>rd</sup> FG%	6-12	50.0%
3PT%	1-3	33.3%
FT%	2-2	100%
4 <sup>th</sup> FG%	9-14	64.3%
3PT%	0-3	0.0%
FT%	4-4	100%
GM FG%	15-26	57.7%
3PT%	1-6	16.7%
FT%	6-6	100.0%

Dead Ball Rebounds: 0, 0

Technical Fouls::NONE

Vanderbilt - 41

NO.	Name	F	Min	FG			Rebounds			Fouls		TP	AS	TO	ST	Blocks		+/-
				M-A	M-A	M-A	OR	DR	TOT	PF	FD					BS	BA	
35	Sacha Washington	F	19:54	6-10	0-0	2-6	4	0	4	1	4	14	1	2	4	1	1	4
3	Jordyn Cambridge	G	20:00	1-5	0-1	1-2	2	2	4	1	2	3	4	1	1	0	0	4
11	Jordyn Oliver	G	15:06	1-2	0-0	0-0	1	2	3	2	0	2	3	0	0	0	0	8
13	Justine Pissott	G	07:34	2-3	1-2	0-0	0	1	1	1	1	5	1	1	0	0	0	10
23	Iyana Moore	G	04:27	0-0	0-0	0-0	0	1	1	1	0	0	0	2	0	0	0	5
4	Madison Greene		16:06	5-10	2-6	2-2	1	0	1	2	1	14	2	1	1	0	0	-1
24	Aga Makurat		11:59	1-2	1-2	0-0	0	1	1	0	0	3	0	0	0	0	0	-6
12	Khamil Pierre		01:53	0-0	0-0	0-0	0	0	0	0	1	0	0	1	0	0	0	-4
5	Ryanne Allen		03:01	0-1	0-1	0-0	0	0	0	1	0	0	0	1	1	0	0	0
Team							1	0	1			0		0				
<b>Totals</b>				16-33	4-12	5-10	9	7	16	9	9	41	11	9	7	1	1	4

Shooting By Period		
3 <sup>rd</sup> FG%	9-17	52.9%
3PT%	4-8	50.0%
FT%	2-4	50%
4 <sup>th</sup> FG%	7-16	43.8%
3PT%	0-4	0.0%
FT%	3-6	50%
GM FG%	16-33	48.5%
3PT%	4-12	33.3%
FT%	5-10	50.0%

Dead Ball Rebounds: 3, 0

Technical Fouls::NONE

	LATECH	VANDY
Biggest lead	0 (1 <sup>st</sup> 10:00)	17 (3 <sup>rd</sup> 4:08)
Best Scoring Run	4(3 <sup>rd</sup> 2:55)	10(3 <sup>rd</sup> 6:10)
Lead Changes	0	
Times Tied	0	
Time with Lead	00:00	19:48

Points from	LATECH	VANDY
Turnovers	4	16
Paint	20	24
Second Chance	6	4
Fast Breaks	2	7
Bench	8	17

	Period by Period Scoring				
	1st	2nd	3rd	4th	TOT
LATECH	16	10	15	22	63
VANDY	19	11	24	17	71

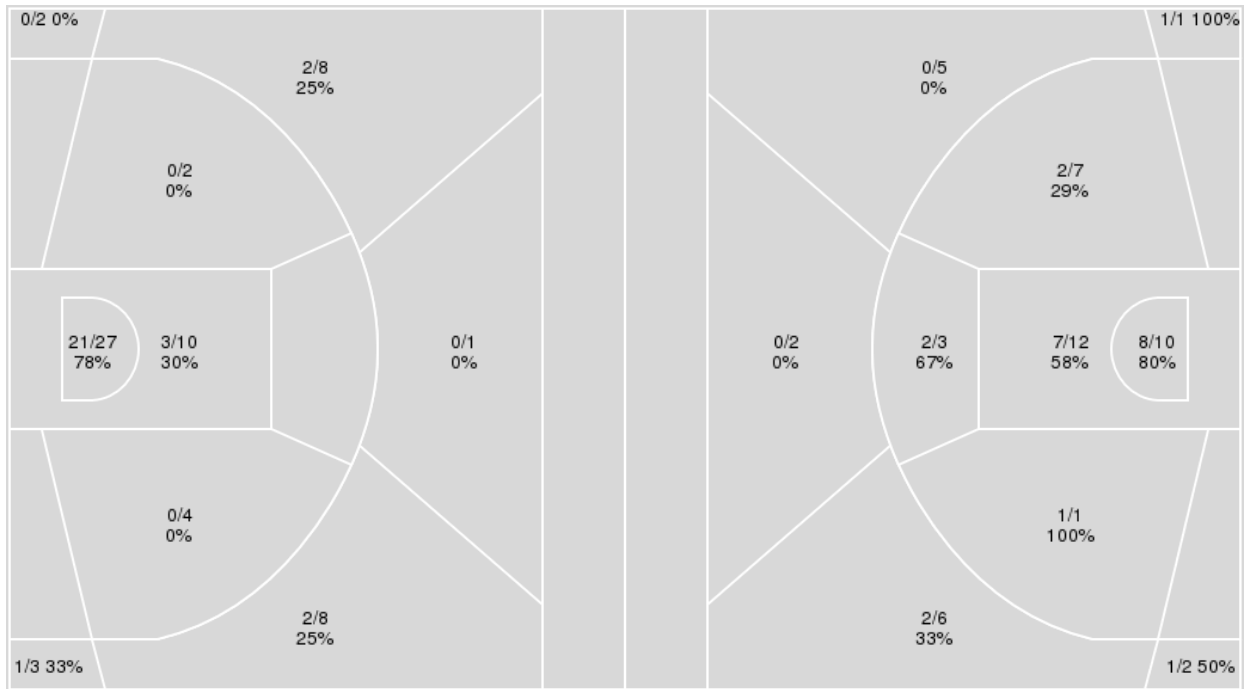


**Officials:** Dee Kanter, Pualani Spurlock-Welsh, Saif Esho

{ Players => 2, 3, 4, 5, 10, 11, 12, 13, 14, 21, 23, 24, 35; } FG Types => { Players => All; } FG Types => All; Results => All;  
 All; Results => All;

**Vanderbilt**

**Louisiana Tech**



Vanderbilt	M/A	%
Field Goals	29/65	45
2 Points	24/43	56
3 Points	5/22	23
Free Throws	8/14	57

Louisiana Tech	M/A	%
Field Goals	24/49	49
2 Points	20/33	61
3 Points	4/16	25
Free Throws	11/14	79



**Louisiana Tech at Vanderbilt**

12/03/23 Memorial Gymnasium, Nashville  
2023-24 Women's Basketball

Game Time: 1:00 PM  
Game Duration: 1:51  
Attendance: 1,829

Officials: Dee Kanter, Pualani Spurlock-Welsh, Saif Esho

**Louisiana Tech**

No	Name	Mins		Score		Points Diff		Points per Min		Assists		Rebounds		Steals		Turnovers	
		On	Off	On	Off	On	Off	On	Off	On	Off	On	Off	On	Off	On	Off
0	Evie Goetz	05:43	34:17	5 - 8	58 - 63	-3	-5	0.87	1.69	2	12	6	25	0	10	2	22
3	Robyn Lee	14:26	25:34	35 - 24	28 - 47	11	-19	2.42	1.10	7	7	10	21	4	6	5	19
10	Salma Bates	37:45	02:15	61 - 65	2 - 6	-4	-4	1.62	0.89	13	1	29	2	10	0	23	1
22	Jianna Morris	30:06	09:54	45 - 53	18 - 18	-8	0	1.50	1.82	9	5	24	7	7	3	19	5
23	Silvia Nativi	33:26	06:34	52 - 60	11 - 11	-8	0	1.56	1.68	11	3	27	4	9	1	21	3
32	Kate Thompson	20:35	19:25	30 - 34	33 - 37	-4	-4	1.46	1.70	7	7	17	14	5	5	12	12
33	Mackenzie Wurm	06:15	33:45	7 - 14	56 - 57	-7	-1	1.12	1.66	2	12	3	28	2	8	5	19
34	Ayen Angoi	12:58	27:02	18 - 21	45 - 50	-3	-5	1.39	1.66	4	10	11	20	1	9	8	16
44	Anna Larr Roberson	35:10	04:50	57 - 65	6 - 6	-8	0	1.62	1.24	13	1	27	4	10	0	23	1
45	Anja Bukvic	03:36	36:24	5 - 11	58 - 60	-6	-2	1.39	1.59	2	12	1	30	2	8	2	22

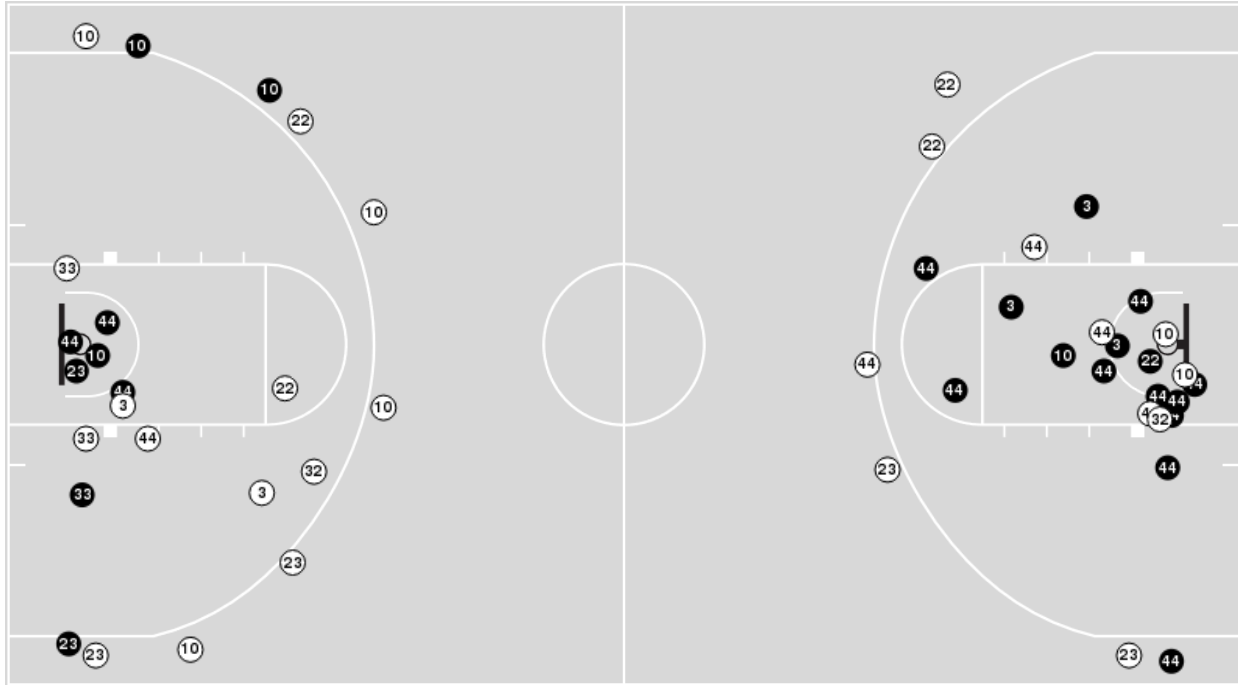
**Vanderbilt**

No	Name	Mins		Score		Points Diff		Points per Min		Assists		Rebounds		Steals		Turnovers	
		On	Off	On	Off	On	Off	On	Off	On	Off	On	Off	On	Off	On	Off
3	Jordyn Cambridge	39:34	00:26	71 - 62	0 - 1	9	-1	1.79	0.00	22	0	34	0	15	0	15	0
4	Madison Greene	27:39	12:21	49 - 49	22 - 14	0	8	1.77	1.78	13	9	22	12	9	6	10	5
5	Ryanne Allen	06:44	33:16	13 - 10	58 - 53	3	5	1.93	1.74	4	18	8	26	1	14	1	14
11	Jordyn Oliver	25:34	14:26	49 - 40	22 - 23	9	-1	1.92	1.52	16	6	21	13	12	3	9	6
12	Khamil Pierre	08:34	31:26	10 - 16	61 - 47	-6	14	1.17	1.94	2	20	7	27	3	12	5	10
13	Justine Pissott	17:44	22:16	32 - 21	39 - 42	11	-3	1.80	1.75	12	10	16	18	7	8	8	7
23	Iyana Moore	17:17	22:43	26 - 19	45 - 44	7	1	1.50	1.98	9	13	15	19	8	7	8	7
24	Aga Makurat	21:32	18:28	40 - 43	31 - 20	-3	11	1.86	1.68	12	10	19	15	7	8	6	9
35	Sacha Washington	35:22	04:39	65 - 55	6 - 8	10	-2	1.84	1.29	20	2	28	6	13	2	13	2

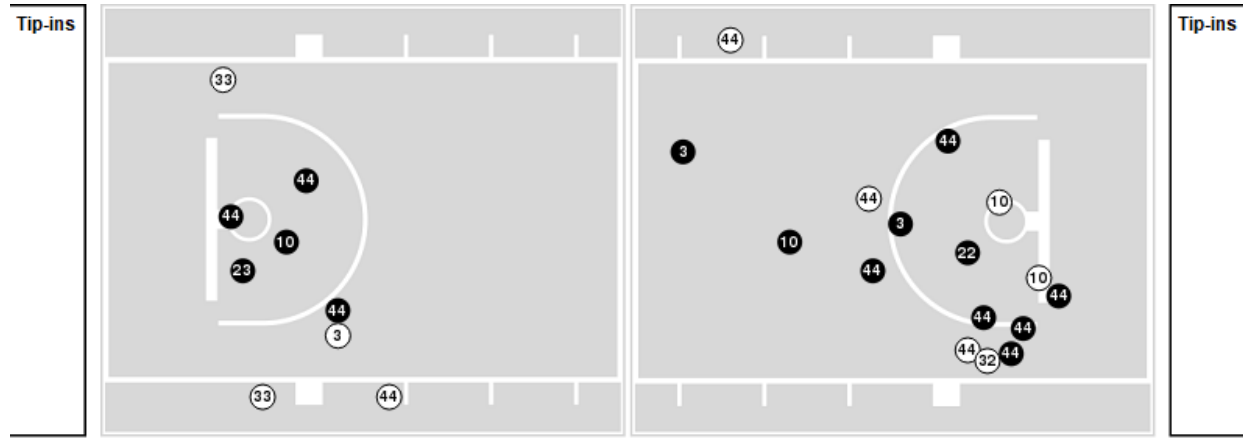


Players => AllFG Types=>AllResults=>All  
**Louisiana Tech**

**All Field Goals**



**Blow Up Chart**



● Made    ○ Missed    N - Player Number

Louisiana Tech	M/A	%
Field Goals	24/49	49
2 Points	20/33	61
3 Points	4/16	25
Free Throws	11/14	79

Louisiana Tech	M/A	%
Points in the Paint	30 (15 / 22)	68
Fast Break Points	7 (3/3)	100
Second Chance Points	8 (4/4)	100
Effective FG%	53	

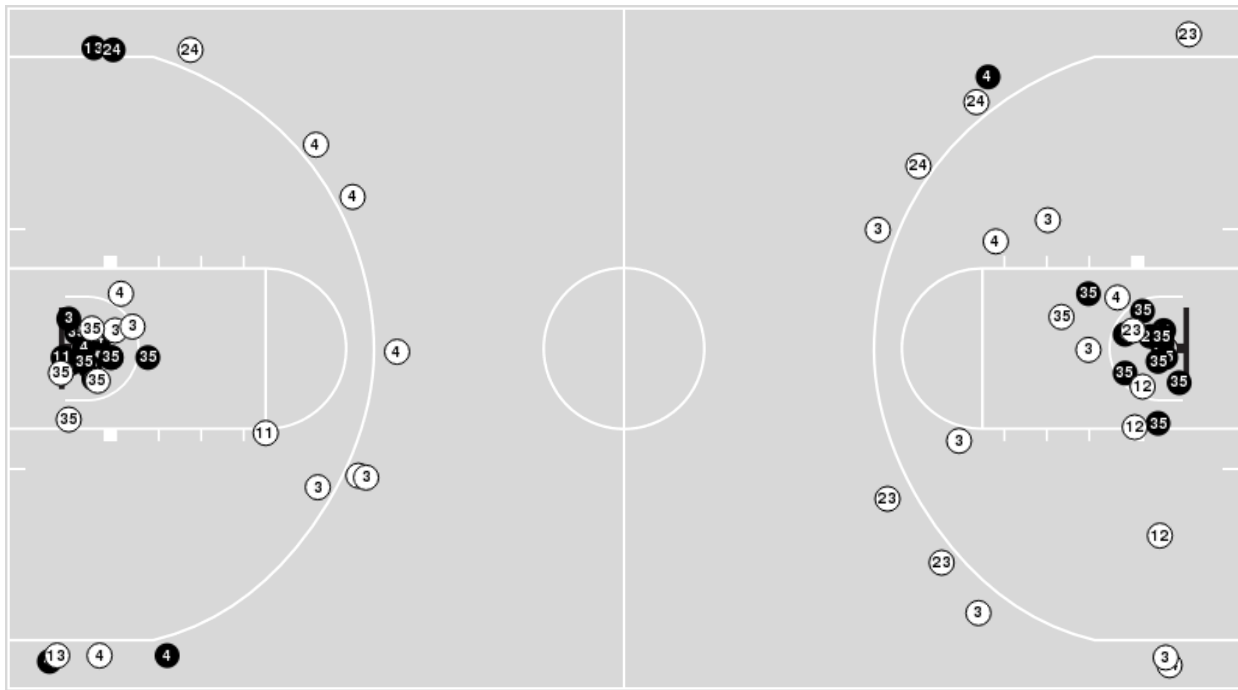


**Officials:** Dee Kanter, Pualani Spurlock-Welsh, Saif Esho

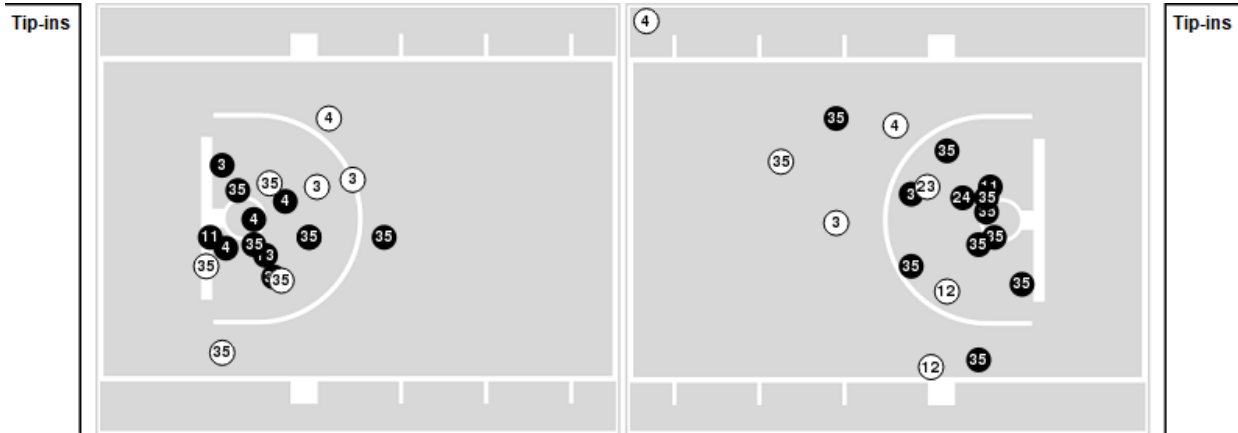
Players => 2, 3, 4, 5, 10, 11, 12, 13, 14, 21, 23, 24, 35FG Types=>AllResults=>All

### Vanderbilt

#### All Field Goals



#### Blow Up Chart



● Made ○ Missed N - Player Number

Vanderbilt	M/A	%
Field Goals	29/65	45
2 Points	24/43	56
3 Points	5/22	23
Free Throws	8/14	57

Vanderbilt	M/A	%
Points in the Paint	48 (24 / 37)	65
Fast Break Points	17 (10/12)	83
Second Chance Points	12 (8/15)	53
Effective FG%	48	



Louisiana Tech at Vanderbilt

12/03/23 Memorial Gymnasium, Nashville  
2023-24 Women's Basketball

Game Time: 1:00 PM  
Game Duration: 1:51  
Attendance: 1,829

Officials: Dee Kanter, Pualani Spurlock-Welsh, Saif Esho

Louisiana Tech

Lineup	Quarter On	Time On	Quarter Off	Time Off	Time on Court	Score	Score Diff	Reb	Stl	Tov	Ass	PPP
10- Bates S/ 22- Morris J/ 23- Nativi S/ 33- Wurm M/ 44- Roberson A/	1	10:00	1	06:04	03:56	5-8	-3	1	1	2	1	1.0000
3- Lee R/ 10- Bates S/ 22- Morris J/ 23- Nativi S/ 44- Roberson A/	1	06:04	1	04:46	01:18	3-3	0	1	1	0	1	1.0000
3- Lee R/ 10- Bates S/ 23- Nativi S/ 32- Thompson K/ 34- Angoi A/	1	04:46	1	02:40	02:06	5-4	1	1	0	1	1	1.2500
0- Goetz E/ 10- Bates S/ 22- Morris J/ 34- Angoi A/ 44- Roberson A/	1	02:40	1	00:05	02:34	3-2	1	2	0	1	1	0.7732
0- Goetz E/ 22- Morris J/ 23- Nativi S/ 33- Wurm M/ 44- Roberson A/	1	00:05	2	10:00	00:05	0-2	-2	0	0	1	0	0.0000
10- Bates S/ 22- Morris J/ 23- Nativi S/ 33- Wurm M/ 44- Roberson A/	2	10:00	2	07:46	02:14	2-4	-2	2	1	2	1	0.6667
10- Bates S/ 22- Morris J/ 23- Nativi S/ 32- Thompson K/ 44- Roberson A/	2	07:46	2	04:31	03:15	5-3	2	6	0	4	1	0.7396
10- Bates S/ 22- Morris J/ 23- Nativi S/ 34- Angoi A/ 44- Roberson A/	2	04:31	2	03:08	01:23	0-2	-2	2	0	1	0	0.0000
3- Lee R/ 10- Bates S/ 22- Morris J/ 23- Nativi S/ 34- Angoi A/	2	03:08	2	02:21	00:47	0-2	-2	0	0	0	0	0.0000
3- Lee R/ 10- Bates S/ 22- Morris J/ 23- Nativi S/ 32- Thompson K/	2	02:21	2	01:43	00:38	1-0	1	1	0	0	0	1.1364
10- Bates S/ 22- Morris J/ 23- Nativi S/ 32- Thompson K/ 44- Roberson A/	2	01:43	3	08:24	03:19	2-2	0	3	1	1	0	0.3333
10- Bates S/ 22- Morris J/ 32- Thompson K/ 44- Roberson A/ 45- Bukvic A/	3	08:24	3	07:40	00:44	0-3	-3	1	0	1	0	0.0000
10- Bates S/ 23- Nativi S/ 32- Thompson K/ 44- Roberson A/ 45- Bukvic A/	3	07:40	3	04:48	02:52	5-8	-3	0	2	1	2	1.0000
10- Bates S/ 22- Morris J/ 23- Nativi S/ 34- Angoi A/ 44- Roberson A/	3	04:48	3	03:55	00:53	2-5	-3	0	0	2	0	0.6944
3- Lee R/ 10- Bates S/ 23- Nativi S/ 34- Angoi A/ 44- Roberson A/	3	03:55	4	10:00	03:55	8-6	2	4	1	3	2	1.1429
0- Goetz E/ 10- Bates S/ 23- Nativi S/ 32- Thompson K/ 34- Angoi A/	4	10:00	4	09:07	00:53	0-0	0	2	0	0	0	0.0000
10- Bates S/ 22- Morris J/ 23- Nativi S/ 32- Thompson K/ 44- Roberson A/	4	09:07	4	07:44	01:23	2-4	-2	0	1	3	0	0.5000
3- Lee R/ 10- Bates S/ 22- Morris J/ 32- Thompson K/ 44- Roberson A/	4	07:44	4	04:29	03:15	8-6	2	1	1	1	2	1.3333
0- Goetz E/ 3- Lee R/ 23- Nativi S/ 32- Thompson K/ 44- Roberson A/	4	04:29	4	04:21	00:08	0-0	0	0	0	0	0	0.0000
0- Goetz E/ 22- Morris J/ 23- Nativi S/ 32- Thompson K/ 44- Roberson A/	4	04:21	4	02:19	02:02	2-4	-2	2	0	0	1	1.0000
3- Lee R/ 10- Bates S/ 22- Morris J/ 23- Nativi S/ 44- Roberson A/	4	02:19	4	01:20	00:59	6-2	4	0	1	0	0	2.1739
3- Lee R/ 10- Bates S/ 22- Morris J/ 23- Nativi S/ 34- Angoi A/	4	01:20	4	01:00	00:20	0-0	0	0	0	0	0	0.0000
3- Lee R/ 10- Bates S/ 22- Morris J/ 23- Nativi S/ 44- Roberson A/	4	01:00	4	00:06	00:53	4-1	3	2	0	0	1	2.0000
3- Lee R/ 10- Bates S/ 22- Morris J/ 23- Nativi S/ 34- Angoi A/	4	00:06	4	00:00	00:06	0-0	0	0	0	0	0	0.0000





**Louisiana Tech at Vanderbilt**

12/03/23 Memorial Gymnasium, Nashville  
2023-24 Women's Basketball

**Game Time:** 1:00 PM  
**Game Duration:** 1:51  
**Attendance:** 1,829

**Officials:** Dee Kanter, Pualani Spurlock-Welsh, Saif Esho

**Vanderbilt**

Lineup	Quarter On	Time On	Quarter Off	Time Off	Time on Court	Score	Score Diff	Reb	Stl	Tov	Ass	PPP
3- Cambridge J/ 11- Oliver J/ 13- Pissott J/ 23- Moore I/ 35- Washington S/	1	10:00	1	06:43	03:17	6-5	1	4	1	1	2	1.5000
3- Cambridge J/ 13- Pissott J/ 23- Moore I/ 24- Makurat A/ 35- Washington S/	1	06:43	1	04:46	01:57	5-3	2	3	1	1	2	1.0246
3- Cambridge J/ 4- Greene M/ 11- Oliver J/ 12- Pierre K/ 24- Makurat A/	1	04:46	1	02:40	02:06	4-5	-1	3	1	1	2	1.0000
4- Greene M/ 11- Oliver J/ 23- Moore I/ 24- Makurat A/ 35- Washington S/	1	02:40	1	02:14	00:26	0-1	-1	0	0	0	0	0.0000
3- Cambridge J/ 4- Greene M/ 12- Pierre K/ 23- Moore I/ 35- Washington S/	1	02:14	1	00:05	02:08	2-2	0	1	1	1	0	0.5000
3- Cambridge J/ 4- Greene M/ 11- Oliver J/ 12- Pierre K/ 23- Moore I/	1	00:05	2	10:00	00:05	2-0	2	0	1	0	0	2.2727
3- Cambridge J/ 11- Oliver J/ 13- Pissott J/ 23- Moore I/ 35- Washington S/	2	10:00	2	06:47	03:13	4-4	0	0	2	1	2	1.0000
3- Cambridge J/ 4- Greene M/ 11- Oliver J/ 24- Makurat A/ 35- Washington S/	2	06:47	2	05:26	01:21	0-0	0	0	1	0	0	0.0000
3- Cambridge J/ 4- Greene M/ 5- Allen R/ 24- Makurat A/ 35- Washington S/	2	05:26	2	02:21	03:05	7-3	4	4	0	0	3	1.1667
3- Cambridge J/ 4- Greene M/ 5- Allen R/ 12- Pierre K/ 24- Makurat A/	2	02:21	2	01:43	00:38	0-1	-1	2	0	0	0	0.0000
3- Cambridge J/ 4- Greene M/ 12- Pierre K/ 13- Pissott J/ 23- Moore I/	2	01:43	3	10:00	01:43	0-2	-2	1	0	1	0	0.0000
3- Cambridge J/ 11- Oliver J/ 13- Pissott J/ 23- Moore I/ 35- Washington S/	3	10:00	3	08:22	01:38	3-0	3	4	0	1	1	0.6148
3- Cambridge J/ 4- Greene M/ 11- Oliver J/ 13- Pissott J/ 35- Washington S/	3	08:22	3	04:48	03:34	10-5	5	3	1	2	3	1.6667
3- Cambridge J/ 4- Greene M/ 11- Oliver J/ 24- Makurat A/ 35- Washington S/	3	04:48	3	03:55	00:53	5-0	5	0	2	0	1	2.5000
3- Cambridge J/ 4- Greene M/ 12- Pierre K/ 24- Makurat A/ 35- Washington S/	3	03:55	3	02:02	01:53	2-6	-4	0	0	2	0	0.5000
3- Cambridge J/ 4- Greene M/ 5- Allen R/ 24- Makurat A/ 35- Washington S/	3	02:02	4	10:00	02:02	4-4	0	1	1	0	1	1.0309
3- Cambridge J/ 11- Oliver J/ 13- Pissott J/ 23- Moore I/ 35- Washington S/	4	10:00	4	07:44	02:16	4-2	2	1	2	1	2	1.0000
3- Cambridge J/ 4- Greene M/ 11- Oliver J/ 23- Moore I/ 35- Washington S/	4	07:44	4	07:11	00:33	0-0	0	1	0	1	0	0.0000
3- Cambridge J/ 4- Greene M/ 11- Oliver J/ 24- Makurat A/ 35- Washington S/	4	07:11	4	02:19	04:52	10-12	-2	5	1	1	3	1.2887
3- Cambridge J/ 4- Greene M/ 5- Allen R/ 24- Makurat A/ 35- Washington S/	4	02:19	4	01:20	00:59	2-2	0	1	0	1	0	1.0000
3- Cambridge J/ 4- Greene M/ 11- Oliver J/ 24- Makurat A/ 35- Washington S/	4	01:20	4	00:06	01:13	1-6	-5	0	0	0	0	0.5319
3- Cambridge J/ 4- Greene M/ 11- Oliver J/ 13- Pissott J/ 24- Makurat A/	4	00:06	4	00:00	00:06	0-0	0	0	0	0	0	0.0000



**Louisiana Tech at Vanderbilt**

12/03/23 Memorial Gymnasium, Nashville  
2023-24 Women's Basketball

Game Time: 1:00 PM

Game Duration: 1:51

Attendance: 1,829

Officials: Dee Kanter, Pualani Spurlock-Welsh, Saif Esho

**Louisiana Tech**

Lineup	Time	Score	Score Diff	Pts/Min	Reb	Stl	Tov	Ass	PPP
10- Bates S/ 22- Morris J/ 23- Nativi S/ 32- Thompson K/ 44- Roberson A/	07:57	9-9	0	1.1321	9	2	8	1	0.5370
10- Bates S/ 22- Morris J/ 23- Nativi S/ 33- Wurm M/ 44- Roberson A/	06:10	7-12	-5	1.1351	3	2	4	2	0.8750
3- Lee R/ 10- Bates S/ 23- Nativi S/ 34- Angoi A/ 44- Roberson A/	03:55	8-6	2	2.0426	4	1	3	2	1.1429
3- Lee R/ 10- Bates S/ 22- Morris J/ 32- Thompson K/ 44- Roberson A/	03:15	8-6	2	2.4615	1	1	1	2	1.3333
3- Lee R/ 10- Bates S/ 22- Morris J/ 23- Nativi S/ 44- Roberson A/	03:10	13-6	7	4.0859	3	2	0	2	1.6753
10- Bates S/ 23- Nativi S/ 32- Thompson K/ 44- Roberson A/ 45- Bukvic A/	02:52	5-8	-3	1.7442	0	2	1	2	1.0000
0- Goetz E/ 10- Bates S/ 22- Morris J/ 34- Angoi A/ 44- Roberson A/	02:34	3-2	1	1.1643	2	0	1	1	0.7732
10- Bates S/ 22- Morris J/ 23- Nativi S/ 34- Angoi A/ 44- Roberson A/	02:16	2-7	-5	0.8824	2	0	3	0	0.3401
3- Lee R/ 10- Bates S/ 23- Nativi S/ 32- Thompson K/ 34- Angoi A/	02:06	5-4	1	2.3810	1	0	1	1	1.2500
0- Goetz E/ 22- Morris J/ 23- Nativi S/ 32- Thompson K/ 44- Roberson A/	02:02	2-4	-2	0.9836	2	0	0	1	1.0000
3- Lee R/ 10- Bates S/ 22- Morris J/ 23- Nativi S/ 34- Angoi A/	01:13	0-2	-2	0.0000	0	0	0	0	0.0000
0- Goetz E/ 10- Bates S/ 23- Nativi S/ 32- Thompson K/ 34- Angoi A/	00:53	0-0	0	0.0000	2	0	0	0	0.0000
10- Bates S/ 22- Morris J/ 32- Thompson K/ 44- Roberson A/ 45- Bukvic A/	00:44	0-3	-3	0.0000	1	0	1	0	0.0000
3- Lee R/ 10- Bates S/ 22- Morris J/ 23- Nativi S/ 32- Thompson K/	00:38	1-0	1	1.5789	1	0	0	0	1.1364
0- Goetz E/ 3- Lee R/ 23- Nativi S/ 32- Thompson K/ 44- Roberson A/	00:08	0-0	0	0.0000	0	0	0	0	0.0000
0- Goetz E/ 22- Morris J/ 23- Nativi S/ 33- Wurm M/ 44- Roberson A/	00:05	0-2	-2	0.0000	0	0	1	0	0.0000



**Louisiana Tech at Vanderbilt**

12/03/23 Memorial Gymnasium, Nashville  
2023-24 Women's Basketball

**Game Time:** 1:00 PM  
**Game Duration:** 1:51  
**Attendance:** 1,829

**Officials:** Dee Kanter, Pualani Spurlock-Welsh, Saif Esho

**Vanderbilt**

Lineup	Time	Score	Score Diff	Pts/Min	Reb	Stl	Tov	Ass	PPP
3- Cambridge J/ 11- Oliver J/ 13- Pissott J/ 23- Moore I/ 35- Washington S/	10:24	17-11	6	1.6346	9	5	4	7	1.0071
3- Cambridge J/ 4- Greene M/ 11- Oliver J/ 24- Makurat A/ 35- Washington S/	08:19	16-18	-2	1.9204	5	4	1	4	1.1730
3- Cambridge J/ 4- Greene M/ 5- Allen R/ 24- Makurat A/ 35- Washington S/	06:06	13-9	4	2.1311	6	1	1	4	1.0943
3- Cambridge J/ 4- Greene M/ 11- Oliver J/ 13- Pissott J/ 35- Washington S/	03:34	10-5	5	2.8037	3	1	2	3	1.6667
3- Cambridge J/ 4- Greene M/ 12- Pierre K/ 23- Moore I/ 35- Washington S/	02:08	2-2	0	0.9331	1	1	1	0	0.5000
3- Cambridge J/ 4- Greene M/ 11- Oliver J/ 12- Pierre K/ 24- Makurat A/	02:06	4-5	-1	1.9048	3	1	1	2	1.0000
3- Cambridge J/ 13- Pissott J/ 23- Moore I/ 24- Makurat A/ 35- Washington S/	01:57	5-3	2	2.5641	3	1	1	2	1.0246
3- Cambridge J/ 4- Greene M/ 12- Pierre K/ 24- Makurat A/ 35- Washington S/	01:53	2-6	-4	1.0619	0	0	2	0	0.5000
3- Cambridge J/ 4- Greene M/ 12- Pierre K/ 13- Pissott J/ 23- Moore I/	01:43	0-2	-2	0.0000	1	0	1	0	0.0000
3- Cambridge J/ 4- Greene M/ 5- Allen R/ 12- Pierre K/ 24- Makurat A/	00:38	0-1	-1	0.0000	2	0	0	0	0.0000
3- Cambridge J/ 4- Greene M/ 11- Oliver J/ 23- Moore I/ 35- Washington S/	00:33	0-0	0	0.0000	1	0	1	0	0.0000
4- Greene M/ 11- Oliver J/ 23- Moore I/ 24- Makurat A/ 35- Washington S/	00:26	0-1	-1	0.0000	0	0	0	0	0.0000
3- Cambridge J/ 4- Greene M/ 11- Oliver J/ 13- Pissott J/ 24- Makurat A/	00:06	0-0	0	0.0000	0	0	0	0	0.0000
3- Cambridge J/ 4- Greene M/ 11- Oliver J/ 12- Pierre K/ 23- Moore I/	00:05	2-0	2	22.2222	0	1	0	0	2.2727