



Officials: Gina Cross, Eric Koch, Teresa Stuck

Alabama St. - 42

Record: 0-6

NO.	Name	Min	FG			Rebounds			Fouls		TP	AS	TO	ST	Blocks		+/-
			M-A	M-A	M-A	OR	DR	TOT	PF	FD					BS	BA	
20	Cordasia Harris	F 27:35	4-9	0-0	5-10	6	6	12	2	7	13	0	1	2	2	1	-27
21	Shmya Ward	F 10:04	0-1	0-0	0-0	0	3	3	5	0	0	1	1	0	0	0	-14
4	DaKiyah Sanders	G 24:26	2-5	2-3	1-2	1	3	4	0	2	7	1	3	0	0	0	-38
13	Ariana Simmons	G 14:24	1-4	0-0	0-0	2	0	2	1	0	2	0	6	0	0	0	-31
24	Whitney Dunn	G 25:16	4-13	3-7	0-0	2	0	2	0	2	11	1	4	1	0	1	-35
2	Ryin Tillis	07:31	0-1	0-0	0-0	1	0	1	1	1	0	0	1	0	0	0	-13
5	Solangelei Akridge	24:07	1-6	0-0	0-0	1	3	4	2	1	2	2	4	0	0	1	-20
15	Ashley Gray	12:19	0-0	0-0	2-2	0	1	1	1	2	2	0	1	0	0	0	-14
23	Che'Mya Carouthers	11:01	0-2	0-1	0-0	0	0	0	1	1	0	1	1	2	0	0	-19
12	Kristian Jackson	16:14	0-1	0-0	0-2	0	1	1	3	1	0	2	1	5	0	0	-4
30	Anaja Hall	15:52	1-4	0-0	1-2	0	0	0	1	1	3	0	0	0	1	0	-12
0	Alyssa Green-White	08:28	0-2	0-0	2-2	0	2	2	1	1	2	0	0	0	0	0	-1
7	Summer Hicks	04:54	0-3	0-0	0-0	1	0	1	1	0	0	0	0	0	0	0	-2
Team						4	1	5			0		2				
Totals			13-51	5-11	11-20	18	20	38	19	19	42	8	25	10	3	3	-46

Shooting By Period		
1st FG%	3-10	30.0%
3PT%	2-4	50.0%
FT%	2-2	100%
2nd FG%	3-11	27.3%
3PT%	2-4	50.0%
FT%	0-0	0%
3rd FG%	4-15	26.7%
3PT%	0-1	0.0%
FT%	8-14	57.1%
4th FG%	3-15	20.0%
3PT%	1-2	50.0%
FT%	1-4	25%
GM FG%	13-51	25.5%
3PT%	5-11	45.5%
FT%	11-20	55.0%

Dead Ball Rebounds: 5, 0

Technical Fouls::NONE

Vanderbilt - 88

Record: 5-0

NO.	Name	Min	FG			Rebounds			Fouls		TP	AS	TO	ST	Blocks		+/-
			M-A	M-A	M-A	OR	DR	TOT	PF	FD					BS	BA	
35	Sacha Washington	F 26:22	10-13	0-0	4-7	1	6	7	3	5	24	1	1	3	0	3	49
3	Jordyn Cambridge	G 27:42	5-7	0-1	3-5	1	2	3	0	3	13	7	2	5	0	0	42
11	Jordyn Oliver	G 21:20	1-3	0-0	1-1	1	5	6	0	1	3	3	1	2	0	0	17
13	Justine Pissott	G 19:20	5-8	3-5	3-3	0	1	1	2	3	16	0	0	0	0	0	31
23	Iyana Moore	G 22:11	4-6	1-2	0-1	0	2	2	3	1	9	4	4	0	0	0	43
4	Madison Greene	14:17	0-2	0-1	0-0	0	0	0	3	1	0	2	2	1	0	0	9
24	Aga Makurat	20:40	4-8	3-5	0-0	0	0	0	2	2	11	1	2	0	1	0	15
14	Aiyana Mitchell	06:49	1-1	0-0	0-0	1	3	4	1	1	2	0	0	0	0	0	-4
12	Khamil Pierre	16:04	4-7	0-0	0-0	3	2	5	3	0	8	3	1	3	2	0	31
2	Jada Brown	09:19	0-1	0-1	0-0	0	0	0	1	0	0	2	2	1	0	0	1
5	Ryanne Allen	09:25	1-3	0-2	0-0	0	2	2	1	1	2	1	0	0	0	0	-1
21	Bella LaChance	06:31	0-0	0-0	0-0	0	0	0	0	1	0	0	1	0	0	0	-3
Team						1	1	2			0		0				
Totals			35-59	7-17	11-17	8	24	32	19	19	88	24	16	15	3	3	46

Shooting By Period		
1st FG%	15-18	83.3%
3PT%	4-4	100.0%
FT%	2-4	50%
2nd FG%	3-13	23.1%
3PT%	0-6	0.0%
FT%	2-2	100%
3rd FG%	7-12	58.3%
3PT%	1-3	33.3%
FT%	5-8	62.5%
4th FG%	10-16	62.5%
3PT%	2-4	50.0%
FT%	2-3	66.7%
GM FG%	35-59	59.3%
3PT%	7-17	41.2%
FT%	11-17	64.7%

Dead Ball Rebounds: 2, 0

Technical Fouls::NONE

	ASU	VANDY
Biggest lead	0 (1 st 10:00)	48 (4 th 1:32)
Best Scoring Run	5(2 nd 3:54)	18(4 th 6:36)
Lead Changes	0	
Times Tied	0	
Time with Lead	00:00	39:21

	ASU	VANDY
Points from		
Turnovers	8	35
Paint	14	48
Second Chance	11	8
Fast Breaks	2	14
Bench	9	23

	Period by Period Scoring				
	1st	2nd	3rd	4th	TOT
ASU	10	8	16	8	42
VANDY	36	8	20	24	88



Alabama St. at Vanderbilt

11/20/23 Memorial Gymnasium, Nashville
2023-24 Women's Basketball

Officials: Gina Cross, Eric Koch, Teresa Stuck

Period 1

Quarter Starters:

VANDY	3 Cambridge J	11 Oliver J	13 Pissott J	23 Moore I	35 Washington S
ASU	4 Sanders D	13 Simmons A	20 Harris C	21 Ward S	24 Dunn W

Game Time	VANDY	Score	Diff	ASU
10:00	35 WASHINGTON S jumpball won			20 HARRIS C jumpball lost
09:54	23 MOORE I turnover bad pass (1)			20 HARRIS C steal (1)
09:33				24 DUNN W 2pt FG from turnover in the paint, driving layup missed
09:29				24 DUNN W offensive rebound (1)
09:27	35 WASHINGTON S steal (1)			24 DUNN W turnover lost ball (1)
09:21	3 CAMBRIDGE J 2pt FG from turnover in the paint, driving layup made (2)	2-0	2	
08:55				24 DUNN W 3pt FG , jump shot missed
08:51	11 OLIVER J defensive rebound (1)			
08:45	35 WASHINGTON S 2pt FG in the paint, layup blocked			
08:45				20 HARRIS C block (1)
08:40				20 HARRIS C defensive rebound (1)
08:33	11 OLIVER J steal (1)			13 SIMMONS A turnover bad pass (1)
08:22	23 MOORE I 2pt FG from turnover in the paint, layup made (2)	4-0	4	
08:22	11 OLIVER J assist (1)			
08:18				21 WARD S substitution out
08:18				2 TILLIS R substitution in
08:11		4-3	1	4 SANDERS D 3pt FG , jump shot made (3)
08:11				24 DUNN W assist (1)
07:50	23 MOORE I 2pt FG in the paint, layup made (4)	6-3	3	
07:50	3 CAMBRIDGE J assist (1)			
07:26				13 SIMMONS A 2pt FG in the paint, driving layup missed
07:23	23 MOORE I defensive rebound (1)			
07:20	35 WASHINGTON S 2pt FG fast break in the paint, layup made (2)	8-3	5	
07:20	3 CAMBRIDGE J assist (2)			
07:03	3 CAMBRIDGE J steal (1)			4 SANDERS D turnover lost ball (1)
06:59	3 CAMBRIDGE J 2pt FG from turnover in the paint, layup missed			
06:56	3 CAMBRIDGE J offensive rebound (1)			
06:53	13 PISSOTT J 3pt FG from turnover second chance, jump shot made (3)	11-3	8	
06:53	3 CAMBRIDGE J assist (3)			
06:33	3 CAMBRIDGE J steal (2)			24 DUNN W turnover lost ball (2)
06:33	3 CAMBRIDGE J substitution out			
06:33	4 GREENE M substitution in			
06:21	13 PISSOTT J 3pt FG from turnover, jump shot made (6)	14-3	11	
06:21	11 OLIVER J assist (2)			
06:03				13 SIMMONS A 2pt FG outside the paint, jump shot missed
05:59				13 SIMMONS A offensive rebound (1)
05:57		14-5	9	13 SIMMONS A 2pt FG second chance in the paint, driving layup made (2)
05:48	23 MOORE I 3pt FG , jump shot made (7)	17-5	12	
05:48	4 GREENE M assist (1)			
05:40	4 GREENE M foul personal (1 - 1)			2 TILLIS R foul drawn (1)



Alabama St. at Vanderbilt

11/20/23 Memorial Gymnasium, Nashville
2023-24 Women's Basketball

Game Time: 1:00 PM
Game Duration: 1:58
Attendance: 1,612

Officials: Gina Cross, Eric Koch, Teresa Stuck

Game Time	VANDY	Score	Diff	ASU
05:40				4 SANDERS D substitution out
05:40				5 AKRIDGE S substitution in
05:40				2 TILLIS R substitution out
05:40				21 WARD S substitution in
05:35				5 AKRIDGE S 2pt FG outside the paint, jump shot missed
05:32				13 SIMMONS A offensive rebound (2)
05:30	11 OLIVER J steal (2)			13 SIMMONS A turnover bad pass (2)
05:21	35 WASHINGTON S 2pt FG from turnover in the paint, layup made (4)	19-5	14	
05:21	23 MOORE I assist (1)			
05:21	35 WASHINGTON S foul drawn (1)			21 WARD S foul shooting (1 - 1)
05:21				13 SIMMONS A substitution out
05:21				21 WARD S substitution out
05:21				15 GRAY A substitution in
05:21				23 CAROUTHERS C substitution in
05:21	35 WASHINGTON S free throw 1 - 1 made (5)	20-5	15	
05:20				20 HARRIS C substitution out
05:20				24 DUNN W substitution out
05:20				12 JACKSON K substitution in
05:20				21 WARD S substitution in
05:15				turnover (6)
05:14	13 PISSOTT J substitution out			
05:14	24 MAKURAT A substitution in			
05:07	24 MAKURAT A 2pt FG from turnover in the paint, layup made (2)	22-5	17	
04:52	35 WASHINGTON S foul shooting (1 - 2)			15 GRAY A foul drawn (1)
04:52	23 MOORE I substitution out			
04:52	35 WASHINGTON S substitution out			
04:52	3 CAMBRIDGE J substitution in			
04:52	14 MITCHELL A substitution in			
04:52		22-6	16	15 GRAY A free throw 1 - 2 made (1)
04:52		22-7	15	15 GRAY A free throw 2 - 2 made (2)
04:27	4 GREENE M foul drawn (1)			21 WARD S foul personal (2 - 2)
04:24	24 MAKURAT A 2pt FG outside the paint, jump shot missed			
04:20				21 WARD S defensive rebound (1)
04:04				15 GRAY A turnover travel (1)
03:38	24 MAKURAT A foul drawn (1)			12 JACKSON K foul personal (1 - 3)
03:36	3 CAMBRIDGE J turnover bad pass (1)			
03:36	4 GREENE M substitution out			
03:36	11 OLIVER J substitution out			
03:36	14 MITCHELL A substitution out			
03:36	12 PIERRE K substitution in			
03:36	23 MOORE I substitution in			
03:36	35 WASHINGTON S substitution in			
03:36				21 WARD S substitution out
03:36				30 HALL A substitution in
03:27	12 PIERRE K 2pt FG outside the paint, jump shot made (2)	24-7	17	
03:12				turnover 10 sec back court (8)
02:55	24 MAKURAT A 3pt FG from turnover, jump shot made (5)	27-7	20	
02:55	3 CAMBRIDGE J assist (4)			



Alabama St. at Vanderbilt

11/20/23 Memorial Gymnasium, Nashville
2023-24 Women's Basketball

Game Time: 1:00 PM
Game Duration: 1:58
Attendance: 1,612

Officials: Gina Cross, Eric Koch, Teresa Stuck

Game Time	VANDY	Score	Diff	ASU
02:47	12 PIERRE K steal (1)			12 JACKSON K turnover bad pass (1)
02:43	35 WASHINGTON S 2pt FG fast break from turnover in the paint, layup made (7)	29-7	22	
02:43	12 PIERRE K assist (1)			
02:43	35 WASHINGTON S foul drawn (2)			5 AKRIDGE S foul shooting (1 - 4)
02:43				Timeout 30 Sec
02:43				12 JACKSON K substitution out
02:43				23 CAROTHERS C substitution out
02:43				4 SANDERS D substitution in
02:43				20 HARRIS C substitution in
02:43	35 WASHINGTON S free throw fast break 1 - 1 missed			
02:36				21 WARD S defensive rebound (2)
02:42				21 WARD S substitution in
02:42				12 JACKSON K substitution out
02:42				23 CAROTHERS C substitution out
02:42				4 SANDERS D substitution in
02:17				4 SANDERS D 3pt FG , jump shot missed
02:13	12 PIERRE K defensive rebound (1)			
02:06	35 WASHINGTON S 2pt FG in the paint, layup made (9)	31-7	24	
02:06	24 MAKURAT A assist (1)			
01:46				21 WARD S 2pt FG outside the paint, jump shot missed
01:42	35 WASHINGTON S defensive rebound (1)			
01:22	35 WASHINGTON S 2pt FG in the paint, layup made (11)	33-7	26	
01:22	23 MOORE I assist (2)			
00:47		33-10	23	4 SANDERS D 3pt FG , jump shot made (6)
00:47				21 WARD S assist (1)
00:32	3 CAMBRIDGE J foul drawn (1)			15 GRAY A foul personal (1 - 5)
00:32				5 AKRIDGE S substitution out
00:32				21 WARD S substitution out
00:32				13 SIMMONS A substitution in
00:32				20 HARRIS C substitution in
00:32	3 CAMBRIDGE J free throw 1 - 2 made (3)	34-10	24	
00:32	3 CAMBRIDGE J free throw 2 - 2 missed			
00:29				20 HARRIS C defensive rebound (2)
00:09				Timeout 30 Sec
00:06	12 PIERRE K steal (2)			4 SANDERS D turnover lost ball (2)
00:01	12 PIERRE K 2pt FG from turnover in the paint, jump shot made (4)	36-10	26	
00:01	3 CAMBRIDGE J assist (5)			
00:00	3 CAMBRIDGE J substitution out			
00:00	12 PIERRE K substitution out			
00:00	24 MAKURAT A substitution out			
00:00	4 GREENE M substitution in			
00:00	11 OLIVER J substitution in			
00:00	13 PISSOTT J substitution in			
00:00				15 GRAY A substitution out
00:00				30 HALL A substitution out
00:00				2 TILLIS R substitution in
00:00				23 CAROTHERS C substitution in
END OF PERIOD				



Official Basketball Play by Play - 1st Period

Alabama St. at Vanderbilt

11/20/23 Memorial Gymnasium, Nashville
2023-24 Women's Basketball

Game Time: 1:00 PM

Game Duration: 1:58

Attendance: 1,612

Officials: Gina Cross, Eric Koch, Teresa Stuck

Game Time	VANDY	Score	Diff	ASU
VANDY 36-10 ASU				



Alabama St. at Vanderbilt

11/20/23 Memorial Gymnasium, Nashville
2023-24 Women's Basketball

Game Time: 1:00 PM
Game Duration: 1:58
Attendance: 1,612

Officials: Gina Cross, Eric Koch, Teresa Stuck

Alabama St. - 10

NO.	Name	F	Min	FG			Rebounds			Fouls		TP	AS	TO	ST	Blocks		+/-
				M-A	3P	FT	OR	DR	TOT	PF	FD					BS	BA	
20	Cordasia Harris	F	07:23	0-0	0-0	0-0	0	2	2	0	0	0	0	0	1	1	0	-18
21	Shmya Ward	F	05:55	0-1	0-0	0-0	0	2	2	2	0	0	1	0	0	0	0	-7
4	DaKiyah Sanders	G	07:03	2-3	2-3	0-0	0	0	0	0	0	6	0	2	0	0	0	-16
13	Ariana Simmons	G	05:12	1-3	0-0	0-0	2	0	2	0	0	2	0	2	0	0	0	-17
24	Whitney Dunn	G	04:40	0-2	0-1	0-0	1	0	1	0	0	0	1	2	0	0	0	-15
2	Ryin Tillis		02:38	0-0	0-0	0-0	0	0	0	0	1	0	0	0	0	0	0	-8
5	Solangelei Akridge		05:08	0-1	0-0	0-0	0	0	0	1	0	0	0	0	0	0	0	-11
15	Ashley Gray		05:21	0-0	0-0	2-2	0	0	0	1	1	2	0	1	0	0	0	-12
23	Che'Mya Carouthers		02:38	0-0	0-0	0-0	0	0	0	0	0	0	0	0	0	0	0	-8
12	Kristian Jackson		02:37	0-0	0-0	0-0	0	0	0	1	0	0	0	1	0	0	0	-7
30	Anaja Hall		03:36	0-0	0-0	0-0	0	0	0	0	0	0	0	0	0	0	0	-11
Team							0	0	0			0		2				
Totals				3-10	2-4	2-2	3	4	7	5	2	10	2	10	1	1	0	-26

Shooting By Period		
1st FG%	3-10	30.0%
3PT%	2-4	50.0%
FT%	2-2	100%
GM FG%	3-10	30.0%
3PT%	2-4	50.0%
FT%	2-2	100.0%

Dead Ball Rebounds: 0, 0

Technical Fouls::NONE

Vanderbilt - 36

NO.	Name	F	Min	FG			Rebounds			Fouls		TP	AS	TO	ST	Blocks		+/-
				M-A	3P	FT	OR	DR	TOT	PF	FD					BS	BA	
35	Sacha Washington	F	08:44	5-6	0-0	1-2	0	1	1	1	2	11	0	0	1	0	1	28
3	Jordyn Cambridge	G	08:19	1-2	0-0	1-2	1	0	1	0	1	3	5	1	2	0	0	17
11	Jordyn Oliver	G	06:24	0-0	0-0	0-0	0	1	1	0	0	0	2	0	2	0	0	15
13	Justine Pissott	G	04:46	2-2	2-2	0-0	0	0	0	0	0	6	0	0	0	0	0	15
23	Iyana Moore	G	08:44	3-3	1-1	0-0	0	1	1	0	0	7	2	1	0	0	0	28
4	Madison Greene		02:57	0-0	0-0	0-0	0	0	0	1	1	0	1	0	0	0	0	7
24	Aga Makurat		05:14	2-3	1-1	0-0	0	0	0	0	1	5	1	0	0	0	0	11
14	Aiyana Mitchell		01:16	0-0	0-0	0-0	0	0	0	0	0	0	0	0	0	0	0	-2
12	Khamil Pierre		03:36	2-2	0-0	0-0	0	1	1	0	0	4	1	0	2	0	0	11
Team							0	0	0			0		0				
Totals				15-18	4-4	2-4	1	4	5	2	5	36	12	2	7	0	1	26

Shooting By Period		
1st FG%	15-18	83.3%
3PT%	4-4	100.0%
FT%	2-4	50%
GM FG%	15-18	83.3%
3PT%	4-4	100.0%
FT%	2-4	50.0%

Dead Ball Rebounds: 0, 0

Technical Fouls::NONE

	ASU	VANDY
Biggest lead	0 (1st 10:00)	26 (1st 1:22)
Best Scoring Run	3(1st 8:11)	11(1st 1:22)
Lead Changes	0	
Times Tied	0	
Time with Lead	00:00	09:21

	ASU	VANDY
Points from		
Turnovers	0	22
Paint	2	20
Second Chance	2	3
Fast Breaks	0	4
Bench	2	9

	Period by Period Scoring				
	1st	2nd	3rd	4th	TOT
ASU	10	8	16	8	42
VANDY	36	8	20	24	88



Alabama St. at Vanderbilt

11/20/23 Memorial Gymnasium, Nashville
2023-24 Women's Basketball

Game Time: 1:00 PM
Game Duration: 1:58
Attendance: 1,612

Officials: Gina Cross, Eric Koch, Teresa Stuck

Period 2

Quarter Starters:

VANDY	23 Moore I	35 Washington S	4 Greene M	11 Oliver J	13 Pissott J
ASU	4 Sanders D	13 Simmons A	20 Harris C	2 Tillis R	23 Carouthers C

Game Time	VANDY	Score	Diff	ASU
09:40	4 GREENE M steal (1)			23 CAROUTHERS C turnover bad pass (1)
09:34	4 GREENE M turnover bad pass (1)			23 CAROUTHERS C steal (1)
09:23	35 WASHINGTON S steal (2)			2 TILLIS R turnover bad pass (1)
08:53	11 OLIVER J 2pt FG from turnover outside the paint, jump shot missed			
08:49				20 HARRIS C defensive rebound (3)
08:22				23 CAROUTHERS C 2pt FG outside the paint, jump shot missed
08:18	23 MOORE I defensive rebound (2)			
08:14	23 MOORE I foul offensive (1 - 1)			23 CAROUTHERS C foul drawn (1)
08:14	23 MOORE I turnover offensive (2)			
08:14	23 MOORE I substitution out			
08:14	3 CAMBRIDGE J substitution in			
07:47				4 SANDERS D substitution out
07:47				5 AKRIDGE S substitution in
07:45				23 CAROUTHERS C 3pt FG from turnover, jump shot missed
07:43				offensive rebound (9)
07:43				23 CAROUTHERS C substitution out
07:43				24 DUNN W substitution in
07:43	11 OLIVER J substitution out			
07:43	12 PIERRE K substitution in			
07:36				20 HARRIS C 2pt FG from turnover second chance in the paint, jump shot blocked
07:36	12 PIERRE K block (1)			
07:31				20 HARRIS C offensive rebound (4)
07:31				13 SIMMONS A turnover travel (3)
07:31	13 PISSOTT J substitution out			
07:31	24 MAKURAT A substitution in			
07:31				2 TILLIS R substitution out
07:31				0 GREEN-WHITE A substitution in
07:21	3 CAMBRIDGE J 2pt FG from turnover outside the paint, jump shot made (5)	38-10	28	
06:54				24 DUNN W 2pt FG in the paint, driving layup missed
06:51				20 HARRIS C offensive rebound (5)
06:46				5 AKRIDGE S 2pt FG second chance in the paint, jump shot missed
06:43	35 WASHINGTON S defensive rebound (2)			
06:29	35 WASHINGTON S 2pt FG in the paint, layup made (13)	40-10	30	
06:29	12 PIERRE K assist (2)			
06:06		40-13	27	24 DUNN W 3pt FG , jump shot made (3)
06:06				5 AKRIDGE S assist (1)
05:53	12 PIERRE K 2pt FG in the paint, jump shot missed			
05:47	35 WASHINGTON S offensive rebound (3)			
05:45	4 GREENE M 2pt FG second chance outside the paint, jump shot missed			



Alabama St. at Vanderbilt

11/20/23 Memorial Gymnasium, Nashville
2023-24 Women's Basketball

Game Time: 1:00 PM
Game Duration: 1:58
Attendance: 1,612

Officials: Gina Cross, Eric Koch, Teresa Stuck

Game Time	VANDY	Score	Diff	ASU
05:43	12 PIERRE K offensive rebound (2)			
05:32	3 CAMBRIDGE J 3pt FG second chance, jump shot missed			
05:25				0 GREEN-WHITE A defensive rebound (1)
05:00	12 PIERRE K foul personal (1 - 2)			24 DUNN W foul drawn (1)
05:00	Timeout media			
05:00	4 GREENE M substitution out			
05:00	35 WASHINGTON S substitution out			
05:00	2 BROWN J substitution in			
05:00	5 ALLEN R substitution in			
05:00				13 SIMMONS A substitution out
05:00				20 HARRIS C substitution out
05:00				15 GRAY A substitution in
05:00				30 HALL A substitution in
04:58				24 DUNN W 3pt FG , jump shot missed
04:53				5 AKRIDGE S offensive rebound (1)
04:37				0 GREEN-WHITE A 2pt FG second chance in the paint, driving layup missed
04:33	5 ALLEN R defensive rebound (1)			
04:29	5 ALLEN R 3pt FG , jump shot missed			
04:21				0 GREEN-WHITE A defensive rebound (2)
03:54		40-15	25	5 AKRIDGE S 2pt FG in the paint, jump shot made (2)
03:32	5 ALLEN R 2pt FG outside the paint, jump shot made (2)	42-15	27	
03:32	2 BROWN J assist (1)			
03:03				24 DUNN W turnover lost ball (3)
03:03	12 PIERRE K substitution out			
03:03	24 MAKURAT A substitution out			
03:03	13 PISSOTT J substitution in			
03:03	14 MITCHELL A substitution in			
03:03				0 GREEN-WHITE A substitution out
03:03				24 DUNN W substitution out
03:03				13 SIMMONS A substitution in
03:03				21 WARD S substitution in
02:49	2 BROWN J 3pt FG from turnover, jump shot missed			
02:46				21 WARD S defensive rebound (3)
02:25	2 BROWN J steal (1)			5 AKRIDGE S turnover bad pass (1)
02:21	13 PISSOTT J foul drawn (1)			5 AKRIDGE S foul shooting (2 - 1)
02:21				5 AKRIDGE S substitution out
02:21				15 GRAY A substitution out
02:21				4 SANDERS D substitution in
02:21				12 JACKSON K substitution in
02:21	13 PISSOTT J free throw fast break 1 - 2 made (7)	43-15	28	
02:21	13 PISSOTT J free throw fast break 2 - 2 made (8)	44-15	29	
01:57				13 SIMMONS A 2pt FG outside the paint, jump shot missed
01:53	3 CAMBRIDGE J defensive rebound (2)			
01:32	13 PISSOTT J 3pt FG , jump shot missed			
01:29				12 JACKSON K defensive rebound (1)
01:13	5 ALLEN R foul drawn (1)			13 SIMMONS A foul offensive (1 - 2)
01:13				13 SIMMONS A turnover offensive (4)
01:13	3 CAMBRIDGE J substitution out			



Alabama St. at Vanderbilt

11/20/23 Memorial Gymnasium, Nashville
2023-24 Women's Basketball

Game Time: 1:00 PM
Game Duration: 1:58
Attendance: 1,612

Officials: Gina Cross, Eric Koch, Teresa Stuck

Game Time	VANDY	Score	Diff	ASU
01:13	21 LACHANCE B substitution in			
01:13				13 SIMMONS A substitution out
01:13				24 DUNN W substitution in
01:04	13 PISSOTT J 2pt FG from turnover outside the paint, jump shot missed			
01:01				4 SANDERS D defensive rebound (1)
00:55		44-18	26	24 DUNN W 3pt FG , jump shot made (6)
00:55				12 JACKSON K assist (1)
00:41	5 ALLEN R 3pt FG , jump shot missed			
00:40	14 MITCHELL A offensive rebound (1)			
00:40	14 MITCHELL A foul drawn (1)			30 HALL A foul personal (1 - 3)
00:30	2 BROWN J foul offensive (1 - 3)			24 DUNN W foul drawn (2)
00:30	2 BROWN J turnover offensive (1)			
00:12	21 LACHANCE B foul drawn (1)			21 WARD S foul offensive (3 - 4)
00:12				21 WARD S turnover offensive (1)
00:12	14 MITCHELL A substitution out			
00:12	21 LACHANCE B substitution out			
00:12	4 GREENE M substitution in			
00:12	35 WASHINGTON S substitution in			
00:03	4 GREENE M 3pt FG from turnover, jump shot missed			
00:00				4 SANDERS D defensive rebound (2)
END OF PERIOD				
VANDY 44-18 ASU				



Alabama St. at Vanderbilt

11/20/23 Memorial Gymnasium, Nashville
2023-24 Women's Basketball

Game Time: 1:00 PM
Game Duration: 1:58
Attendance: 1,612

Officials: Gina Cross, Eric Koch, Teresa Stuck

Alabama St. - 8

NO.	Name	F	Min	FG			Rebounds			Fouls		TP	AS	TO	ST	Blocks		+/-
				M-A	M-A	M-A	OR	DR	TOT	PF	FD					BS	BA	
20	Cordasia Harris	F	05:00	0-1	0-0	0-0	2	1	3	0	0	0	0	0	0	0	1	-1
21	Shmya Ward	F	03:03	0-0	0-0	0-0	0	1	1	1	0	0	0	1	0	0	0	1
4	DaKiyah Sanders	G	04:34	0-0	0-0	0-0	0	2	2	0	0	0	0	0	0	0	0	1
13	Ariana Simmons	G	06:50	0-1	0-0	0-0	0	0	0	1	0	0	0	2	0	0	0	-3
24	Whitney Dunn	G	05:53	2-4	2-3	0-0	0	0	0	0	2	6	0	1	0	0	0	2
2	Ryin Tillis		02:29	0-0	0-0	0-0	0	0	0	0	0	0	0	1	0	0	0	0
23	Che'Mya Carouthers		02:17	0-2	0-1	0-0	0	0	0	0	1	0	0	1	1	0	0	0
5	Solangelei Akridge		05:26	1-2	0-0	0-0	1	0	1	1	0	2	1	1	0	0	0	-1
0	Alyssa Green-White		04:28	0-1	0-0	0-0	0	2	2	0	0	0	0	0	0	0	0	-1
15	Ashley Gray		02:39	0-0	0-0	0-0	0	0	0	0	0	0	0	0	0	0	0	0
30	Anaja Hall		05:00	0-0	0-0	0-0	0	0	0	1	0	0	0	0	0	0	0	1
12	Kristian Jackson		02:21	0-0	0-0	0-0	0	1	1	0	0	0	1	0	0	0	0	1
Team							1	0	1		0		0					
Totals				3-11	2-4	0-0	4	7	11	4	3	8	2	7	1	0	1	0

Shooting By Period		
2 nd FG%	3-11	27.3%
3PT%	2-4	50.0%
FT%	0-0	0%
GM FG%	3-11	27.3%
3PT%	2-4	50.0%
FT%	0-0	0.0%

Dead Ball Rebounds: 0, 0

Technical Fouls::NONE

Vanderbilt - 8

NO.	Name	F	Min	FG			Rebounds			Fouls		TP	AS	TO	ST	Blocks		+/-
				M-A	M-A	M-A	OR	DR	TOT	PF	FD					BS	BA	
35	Sacha Washington	F	05:13	1-1	0-0	0-0	1	1	2	0	0	2	0	0	1	0	0	1
3	Jordyn Cambridge	G	07:01	1-2	0-1	0-0	0	1	1	0	0	2	0	0	0	0	0	3
11	Jordyn Oliver	G	02:17	0-1	0-0	0-0	0	0	0	0	0	0	0	0	0	0	0	0
13	Justine Pissott	G	05:32	0-2	0-1	2-2	0	0	0	0	1	2	0	0	0	0	0	-1
23	Iyana Moore	G	01:46	0-0	0-0	0-0	0	1	1	1	0	0	0	1	0	0	0	0
12	Khamil Pierre		04:40	0-1	0-0	0-0	1	0	1	1	0	0	1	0	0	1	0	1
24	Aga Makurat		04:28	0-0	0-0	0-0	0	0	0	0	0	0	0	0	0	0	0	1
2	Jada Brown		05:00	0-1	0-1	0-0	0	0	0	1	0	0	1	1	1	0	0	-1
5	Ryanne Allen		05:00	1-3	0-2	0-0	0	1	1	0	1	2	0	0	0	0	0	-1
14	Aiyana Mitchell		02:50	0-0	0-0	0-0	1	0	1	0	1	0	0	0	0	0	0	-1
21	Bella LaChance		01:00	0-0	0-0	0-0	0	0	0	0	1	0	0	0	0	0	0	-3
4	Madison Greene		05:13	0-2	0-1	0-0	0	0	0	0	0	0	0	1	1	0	0	1
Team							0	0	0		0		0					
Totals				3-13	0-6	2-2	3	4	7	3	4	8	2	3	3	1	0	0

Shooting By Period		
2 nd FG%	3-13	23.1%
3PT%	0-6	0.0%
FT%	2-2	100%
GM FG%	3-13	23.1%
3PT%	0-6	0.0%
FT%	2-2	100.0%

Dead Ball Rebounds: 0, 0

Technical Fouls::NONE

	ASU	VANDY
Biggest lead	0 (1 st 10:00)	30 (2 nd 6:29)
Best Scoring Run	5(2 nd 3:54)	4(2 nd 6:29)
Lead Changes	0	
Times Tied	0	
Time with Lead	00:00	08:53

	ASU	VANDY
Points from		
Turnovers	0	4
Paint	2	2
Second Chance	0	0
Fast Breaks	0	2
Bench	2	2

	Period by Period Scoring				
	1st	2nd	3rd	4th	TOT
ASU	10	8	16	8	42
VANDY	36	8	20	24	88



Alabama St. at Vanderbilt

11/20/23 Memorial Gymnasium, Nashville
2023-24 Women's Basketball

Game Time: 1:00 PM
Game Duration: 1:58
Attendance: 1,612

Officials: Gina Cross, Eric Koch, Teresa Stuck

Alabama St. - 18

NO.	Name	Min	FG			Rebounds			Fouls		TP	AS	TO	ST	Blocks		+/-
			M-A	M-A	M-A	OR	DR	TOT	PF	FD					BS	BA	
20	Cordasia Harris	F 12:23	0-1	0-0	0-0	2	3	5	0	0	0	0	0	1	1	1	-19
21	Shmya Ward	F 08:58	0-1	0-0	0-0	0	3	3	3	0	0	1	1	0	0	0	-6
4	DaKiyah Sanders	G 11:37	2-3	2-3	0-0	0	2	2	0	0	6	0	2	0	0	0	-15
13	Ariana Simmons	G 12:02	1-4	0-0	0-0	2	0	2	1	0	2	0	4	0	0	0	-20
24	Whitney Dunn	G 10:33	2-6	2-4	0-0	1	0	1	0	2	6	1	3	0	0	0	-13
2	Ryin Tillis	05:07	0-0	0-0	0-0	0	0	0	0	1	0	0	1	0	0	0	-8
5	Solangelei Akridge	10:34	1-3	0-0	0-0	1	0	1	2	0	2	1	1	0	0	0	-12
15	Ashley Gray	07:60	0-0	0-0	2-2	0	0	0	1	1	2	0	1	0	0	0	-12
23	Che'Mya Carouthers	04:55	0-2	0-1	0-0	0	0	0	0	1	0	0	1	1	0	0	-8
12	Kristian Jackson	04:58	0-0	0-0	0-0	0	1	1	1	0	0	1	1	0	0	0	-6
30	Anaja Hall	08:36	0-0	0-0	0-0	0	0	0	1	0	0	0	0	0	0	0	-10
0	Alyssa Green-White	04:28	0-1	0-0	0-0	0	2	2	0	0	0	0	0	0	0	0	-1
Team						1	0	1			0		2				
Totals			6-21	4-8	2-2	7	11	18	9	5	18	4	17	2	1	1	-26

Shooting By Period		
1 st FG%	3-10	30.0%
3PT%	2-4	50.0%
FT%	2-2	100%
2 nd FG%	3-11	27.3%
3PT%	2-4	50.0%
FT%	0-0	0%
GM FG%	6-21	28.6%
3PT%	4-8	50.0%
FT%	2-2	100.0%

Dead Ball Rebounds: 0, 0

Technical Fouls::NONE

Vanderbilt - 44

NO.	Name	Min	FG			Rebounds			Fouls		TP	AS	TO	ST	Blocks		+/-
			M-A	M-A	M-A	OR	DR	TOT	PF	FD					BS	BA	
35	Sacha Washington	F 13:57	6-7	0-0	1-2	1	2	3	1	2	13	0	0	2	0	1	29
3	Jordyn Cambridge	G 15:20	2-4	0-1	1-2	1	1	2	0	1	5	5	1	2	0	0	20
11	Jordyn Oliver	G 08:41	0-1	0-0	0-0	0	1	1	0	0	0	2	0	2	0	0	15
13	Justine Pissott	G 10:18	2-4	2-3	2-2	0	0	0	0	1	8	0	0	0	0	0	14
23	Iyana Moore	G 10:30	3-3	1-1	0-0	0	2	2	1	0	7	2	2	0	0	0	28
4	Madison Greene	08:10	0-2	0-1	0-0	0	0	0	1	1	0	1	1	1	0	0	8
24	Aga Makurat	09:42	2-3	1-1	0-0	0	0	0	0	1	5	1	0	0	0	0	12
14	Aiyana Mitchell	04:06	0-0	0-0	0-0	1	0	1	0	1	0	0	0	0	0	0	-3
12	Khamil Pierre	08:16	2-3	0-0	0-0	1	1	2	1	0	4	2	0	2	1	0	12
2	Jada Brown	05:00	0-1	0-1	0-0	0	0	0	1	0	0	1	1	1	0	0	-1
5	Ryanne Allen	05:00	1-3	0-2	0-0	0	1	1	0	1	2	0	0	0	0	0	-1
21	Bella LaChance	01:00	0-0	0-0	0-0	0	0	0	0	1	0	0	0	0	0	0	-3
Team						0	0	0			0		0				
Totals			18-31	4-10	4-6	4	8	12	5	9	44	14	5	10	1	1	26

Shooting By Period		
1 st FG%	15-18	83.3%
3PT%	4-4	100.0%
FT%	2-4	50%
2 nd FG%	3-13	23.1%
3PT%	0-6	0.0%
FT%	2-2	100%
GM FG%	18-31	58.1%
3PT%	4-10	40.0%
FT%	4-6	66.7%

Dead Ball Rebounds: 0, 0

Technical Fouls::NONE

	ASU	VANDY
Biggest lead	0 (1 st 10:00)	30 (2 nd 6:29)
Best Scoring Run	5(2 nd 3:54)	11(1 st 1:22)
Lead Changes	0	
Times Tied	0	
Time with Lead	00:00	19:21

Points from	ASU	VANDY
Turnovers	0	26
Paint	4	22
Second Chance	2	3
Fast Breaks	0	6
Bench	4	11

	Period by Period Scoring				
	1st	2nd	3rd	4th	TOT
ASU	10	8	16	8	42
VANDY	36	8	20	24	88



Alabama St. at Vanderbilt

11/20/23 Memorial Gymnasium, Nashville
2023-24 Women's Basketball

Game Time: 1:00 PM
Game Duration: 1:58
Attendance: 1,612

Officials: Gina Cross, Eric Koch, Teresa Stuck

Period 3

Quarter Starters:

VANDY	3 Cambridge J	11 Oliver J	13 Pissott J	23 Moore I	35 Washington S
ASU	4 Sanders D	13 Simmons A	20 Harris C	21 Ward S	24 Dunn W

Game Time	VANDY	Score	Diff	ASU
10:00	2 BROWN J substitution out			
10:00	4 GREENE M substitution out			
10:00	5 ALLEN R substitution out			
10:00	3 CAMBRIDGE J substitution in			
10:00	11 OLIVER J substitution in			
10:00	23 MOORE I substitution in			
10:00				12 JACKSON K substitution out
10:00				30 HALL A substitution out
10:00				13 SIMMONS A substitution in
10:00				20 HARRIS C substitution in
09:39	3 CAMBRIDGE J 2pt FG outside the paint, jump shot made (7)	46-18	28	
09:39	3 CAMBRIDGE J foul drawn (2)			21 WARD S foul shooting (4 - 1)
09:39	3 CAMBRIDGE J free throw 1 - 1 made (8)	47-18	29	
09:17				24 DUNN W 2pt FG in the paint, jump shot missed
09:13				20 HARRIS C offensive rebound (6)
09:13				20 HARRIS C 2pt FG second chance in the paint, layup missed
09:12				20 HARRIS C offensive rebound (7)
09:12	3 CAMBRIDGE J steal (3)			20 HARRIS C turnover lost ball (1)
09:12				21 WARD S substitution out
09:12				30 HALL A substitution in
08:54	35 WASHINGTON S turnover bad pass (1)			
08:41				30 HALL A 2pt FG from turnover in the paint, jump shot missed
08:38	35 WASHINGTON S defensive rebound (4)			
08:33				13 SIMMONS A substitution out
08:33				5 AKRIDGE S substitution in
08:32	35 WASHINGTON S 2pt FG in the paint, jump shot blocked			
08:32				30 HALL A block (1)
08:23				20 HARRIS C defensive rebound (8)
08:04				5 AKRIDGE S 2pt FG in the paint, jump shot missed
08:01	13 PISSOTT J defensive rebound (1)			
07:50	23 MOORE I 3pt FG , jump shot missed			
07:46				5 AKRIDGE S defensive rebound (2)
07:46	23 MOORE I foul personal (2 - 1)			5 AKRIDGE S foul drawn (1)
07:35	35 WASHINGTON S foul shooting (2 - 2)			20 HARRIS C foul drawn (1)
07:35				20 HARRIS C free throw 1 - 2 missed
07:35				offensive dead ball rebound (1)
07:35		47-19	28	20 HARRIS C free throw 2 - 2 made (1)
07:16	13 PISSOTT J 3pt FG , jump shot missed			
07:12				4 SANDERS D defensive rebound (3)
07:10	23 MOORE I foul shooting (3 - 3)			4 SANDERS D foul drawn (1)
07:10		47-20	27	4 SANDERS D free throw fast break 1 - 2 made (7)
07:09				4 SANDERS D free throw fast break 2 - 2 missed
07:07	35 WASHINGTON S defensive rebound (5)			



Alabama St. at Vanderbilt

11/20/23 Memorial Gymnasium, Nashville
2023-24 Women's Basketball

Game Time: 1:00 PM
Game Duration: 1:58
Attendance: 1,612

Officials: Gina Cross, Eric Koch, Teresa Stuck

Game Time	VANDY	Score	Diff	ASU
07:05	jump ball situation			
07:05	23 MOORE I turnover lost ball (3)			20 HARRIS C steal (2)
07:05	23 MOORE I substitution out			
07:05	4 GREENE M substitution in			
07:03				24 DUNN W 3pt FG from turnover, jump shot missed
06:58	defensive rebound (16)			
06:54	35 WASHINGTON S 2pt FG in the paint, layup made (15)	49-20	29	
06:54	4 GREENE M assist (2)			
06:33				24 DUNN W 2pt FG in the paint, driving layup missed
06:30				20 HARRIS C offensive rebound (9)
06:30	13 PISSOTT J foul shooting (1 - 4)			20 HARRIS C foul drawn (2)
06:30	13 PISSOTT J substitution out			
06:30	24 MAKURAT A substitution in			
06:30				30 HALL A substitution out
06:30				0 GREEN-WHITE A substitution in
06:30		49-21	28	20 HARRIS C free throw 1 - 2 made (2)
06:29				20 HARRIS C free throw 2 - 2 missed
06:26	11 OLIVER J defensive rebound (2)			
06:20	3 CAMBRIDGE J 2pt FG in the paint, driving layup made (10)	51-21	30	
06:06		51-23	28	24 DUNN W 2pt FG outside the paint, jump shot made (8)
05:56	35 WASHINGTON S foul drawn (3)			20 HARRIS C foul shooting (1 - 2)
05:56	11 OLIVER J substitution out			
05:56	12 PIERRE K substitution in			
05:56				20 HARRIS C substitution out
05:56				2 TILLIS R substitution in
05:56	35 WASHINGTON S free throw 1 - 2 made (16)	52-23	29	
05:56	35 WASHINGTON S free throw 2 - 2 made (17)	53-23	30	
05:37	3 CAMBRIDGE J steal (4)			5 AKRIDGE S turnover bad pass (2)
05:33	3 CAMBRIDGE J 2pt FG fast break from turnover in the paint, driving layup made (12)	55-23	32	
05:18				4 SANDERS D 2pt FG outside the paint, jump shot missed
05:14				24 DUNN W offensive rebound (2)
05:13	12 PIERRE K steal (3)			24 DUNN W turnover lost ball (4)
05:01	35 WASHINGTON S foul drawn (4)			2 TILLIS R foul shooting (1 - 3)
05:01	3 CAMBRIDGE J substitution out			
05:01	23 MOORE I substitution in			
05:01				4 SANDERS D substitution out
05:01				24 DUNN W substitution out
05:01				12 JACKSON K substitution in
05:01				15 GRAY A substitution in
05:01	35 WASHINGTON S free throw 1 - 2 missed			
05:01	offensive dead ball rebound (1)			
05:01	35 WASHINGTON S free throw 2 - 2 missed			
04:57				5 AKRIDGE S defensive rebound (3)
04:48	4 GREENE M foul personal (2 - 5)			0 GREEN-WHITE A foul drawn (1)
04:48	Timeout media			
04:48	35 WASHINGTON S substitution out			
04:48	11 OLIVER J substitution in			
04:48		55-24	31	0 GREEN-WHITE A free throw 1 - 2 made (1)



Alabama St. at Vanderbilt

11/20/23 Memorial Gymnasium, Nashville
2023-24 Women's Basketball

Game Time: 1:00 PM
Game Duration: 1:58
Attendance: 1,612

Officials: Gina Cross, Eric Koch, Teresa Stuck

Game Time	VANDY	Score	Diff	ASU
04:48		55-25	30	0 GREEN-WHITE A free throw 2 - 2 made (2)
04:40	24 MAKURAT A foul drawn (2)			0 GREEN-WHITE A foul personal (1 - 4)
04:30	24 MAKURAT A 3pt FG , jump shot made (8)	58-25	33	
04:30	11 OLIVER J assist (3)			
04:05				0 GREEN-WHITE A 2pt FG outside the paint, jump shot missed
04:02				2 TILLIS R offensive rebound (1)
04:01				2 TILLIS R 2pt FG second chance in the paint, layup missed
03:56	11 OLIVER J defensive rebound (3)			
03:50	24 MAKURAT A turnover bad pass (1)			12 JACKSON K steal (1)
03:33				5 AKRIDGE S 2pt FG from turnover in the paint, jump shot missed
03:32				offensive rebound (28)
03:32				2 TILLIS R substitution out
03:32				20 HARRIS C substitution in
03:28	12 PIERRE K foul shooting (2 - 6)			20 HARRIS C foul drawn (3)
03:28				15 GRAY A substitution out
03:28				23 CAROUTHERS C substitution in
03:28				20 HARRIS C free throw 1 - 2 missed
03:28				offensive dead ball rebound (2)
03:28		58-26	32	20 HARRIS C free throw 2 - 2 made (3)
03:28	12 PIERRE K substitution out			
03:28	35 WASHINGTON S substitution in			
03:25	4 GREENE M turnover lost ball (2)			12 JACKSON K steal (2)
03:18		58-28	30	20 HARRIS C 2pt FG from turnover in the paint, driving layup made (5)
03:09	23 MOORE I 2pt FG in the paint, pull up jump shot missed			
03:04				5 AKRIDGE S defensive rebound (4)
02:54	35 WASHINGTON S foul shooting (3 - 7)			20 HARRIS C foul drawn (4)
02:54	4 GREENE M substitution out			
02:54	24 MAKURAT A substitution out			
02:54	3 CAMBRIDGE J substitution in			
02:54	13 PISSOTT J substitution in			
02:54				20 HARRIS C free throw 1 - 2 missed
02:54				offensive dead ball rebound (3)
02:54		58-29	29	20 HARRIS C free throw 2 - 2 made (6)
02:30	3 CAMBRIDGE J foul drawn (3)			12 JACKSON K foul shooting (2 - 5)
02:30				0 GREEN-WHITE A substitution out
02:30				24 DUNN W substitution in
02:30	3 CAMBRIDGE J free throw 1 - 2 missed			
02:30	offensive dead ball rebound (2)			
02:30	3 CAMBRIDGE J free throw 2 - 2 made (13)	59-29	30	
02:21	35 WASHINGTON S steal (3)			5 AKRIDGE S turnover bad pass (3)
02:15	3 CAMBRIDGE J turnover bad pass (2)			12 JACKSON K steal (3)
02:06		59-31	28	20 HARRIS C 2pt FG from turnover in the paint, layup made (8)
02:06				12 JACKSON K assist (2)
01:57	35 WASHINGTON S 2pt FG in the paint, layup blocked			
01:57				20 HARRIS C block (2)
01:53				20 HARRIS C defensive rebound (10)
01:38				20 HARRIS C 2pt FG in the paint, jump shot missed
01:35	35 WASHINGTON S defensive rebound (6)			



Official Basketball Play by Play - 3rd Period

Alabama St. at Vanderbilt

11/20/23 Memorial Gymnasium, Nashville
2023-24 Women's Basketball

Game Time: 1:00 PM

Game Duration: 1:58

Attendance: 1,612

Officials: Gina Cross, Eric Koch, Teresa Stuck

Game Time	VANDY	Score	Diff	ASU
01:19	13 PISSOTT J 2pt FG in the paint, layup made (10)	61-31	30	
01:19	3 CAMBRIDGE J assist (6)			
01:19	13 PISSOTT J foul drawn (2)			12 JACKSON K foul shooting (3 - 6)
01:19				5 AKRIDGE S substitution out
01:19				20 HARRIS C substitution out
01:19				4 SANDERS D substitution in
01:19				30 HALL A substitution in
01:19	13 PISSOTT J free throw 1 - 1 made (11)	62-31	31	
01:03		62-33	29	30 HALL A 2pt FG in the paint, layup made (2)
01:03				23 CAROUTHERS C assist (1)
00:38	23 MOORE I turnover lost ball (4)			23 CAROUTHERS C steal (2)
00:32	13 PISSOTT J foul personal (2 - 8)			30 HALL A foul drawn (1)
00:32	11 OLIVER J substitution out			
00:32	12 PIERRE K substitution in			
00:32				30 HALL A free throw fast break 1 - 2 missed
00:32				offensive dead ball rebound (4)
00:32		62-34	28	30 HALL A free throw fast break 2 - 2 made (3)
00:07	12 PIERRE K 2pt FG in the paint, layup made (6)	64-34	30	
00:07	23 MOORE I assist (3)			
END OF PERIOD				
VANDY 64-34 ASU				



Alabama St. at Vanderbilt

11/20/23 Memorial Gymnasium, Nashville
2023-24 Women's Basketball

Game Time: 1:00 PM
Game Duration: 1:58
Attendance: 1,612

Officials: Gina Cross, Eric Koch, Teresa Stuck

Alabama St. - 16

NO.	Name	Min	FG			Rebounds			Fouls		TP	AS	TO	ST	Blocks		+/-
			M-A	M-A	M-A	OR	DR	TOT	PF	FD					BS	BA	
20	Cordasia Harris	F 06:17	2-4	0-0	4-8	3	2	5	1	4	8	0	1	1	1	0	1
21	Shmya Ward	F 00:48	0-0	0-0	0-0	0	0	0	1	0	0	0	0	0	0	0	-3
4	DaKiyah Sanders	G 06:18	0-1	0-0	1-2	0	1	1	0	1	1	0	0	0	0	0	-6
13	Ariana Simmons	G 01:27	0-0	0-0	0-0	0	0	0	0	0	0	0	0	0	0	0	-3
24	Whitney Dunn	G 07:29	1-4	0-1	0-0	1	0	1	0	0	2	0	1	0	0	0	-7
30	Anaja Hall	04:01	1-2	0-0	1-2	0	0	0	0	1	3	0	0	0	1	0	0
5	Solangelei Akridge	07:14	0-2	0-0	0-0	0	3	3	0	1	0	0	2	0	0	0	-1
0	Alyssa Green-White	04:00	0-1	0-0	2-2	0	0	0	1	1	2	0	0	0	0	0	0
2	Ryin Tillis	02:24	0-1	0-0	0-0	1	0	1	1	0	0	0	0	0	0	0	-5
12	Kristian Jackson	05:01	0-0	0-0	0-0	0	0	0	2	0	0	1	0	3	0	0	2
15	Ashley Gray	01:33	0-0	0-0	0-0	0	0	0	0	0	0	0	0	0	0	0	-1
23	Che'Mya Carouthers	03:28	0-0	0-0	0-0	0	0	0	0	0	0	1	0	1	0	0	3
Team						1	0	1			0		0				
Totals			4-15	0-1	8-14	6	6	12	6	8	16	2	4	5	2	0	-4

Shooting By Period		
3 rd FG%	4-15	26.7%
3PT%	0-1	0.0%
FT%	8-14	57.1%
GM FG%	4-15	26.7%
3PT%	0-1	0.0%
FT%	8-14	57.1%

Dead Ball Rebounds: 4, 0

Technical Fouls::NONE

Vanderbilt - 20

NO.	Name	Min	FG			Rebounds			Fouls		TP	AS	TO	ST	Blocks		+/-
			M-A	M-A	M-A	OR	DR	TOT	PF	FD					BS	BA	
35	Sacha Washington	F 08:40	1-3	0-0	2-4	0	3	3	2	2	4	0	1	1	0	2	4
3	Jordyn Cambridge	G 07:53	3-3	0-0	2-3	0	0	0	0	2	8	1	1	2	0	0	6
11	Jordyn Oliver	G 08:20	0-0	0-0	0-0	0	2	2	0	0	0	1	0	0	0	0	-1
13	Justine Pissott	G 06:24	1-2	0-1	1-1	0	1	1	2	1	3	0	0	0	0	0	3
23	Iyana Moore	G 07:56	0-2	0-1	0-0	0	0	0	2	0	0	1	2	0	0	0	-1
2	Jada Brown	00:00	0-0	0-0	0-0	0	0	0	0	0	0	0	0	0	0	0	0
5	Ryanne Allen	00:00	0-0	0-0	0-0	0	0	0	0	0	0	0	0	0	0	0	0
4	Madison Greene	04:11	0-0	0-0	0-0	0	0	0	1	0	0	1	1	0	0	0	3
24	Aga Makurat	03:36	1-1	1-1	0-0	0	0	0	0	1	3	0	1	0	0	0	1
12	Khamil Pierre	03:00	1-1	0-0	0-0	0	0	0	1	0	2	0	0	1	0	0	5
Team						0	1	1			0		0				
Totals			7-12	1-3	5-8	0	7	7	8	6	20	4	6	4	0	2	4

Shooting By Period		
3 rd FG%	7-12	58.3%
3PT%	1-3	33.3%
FT%	5-8	62.5%
GM FG%	7-12	58.3%
3PT%	1-3	33.3%
FT%	5-8	62.5%

Dead Ball Rebounds: 2, 0

Technical Fouls::NONE

	ASU	VANDY
Biggest lead	0 (1 st 10:00)	33 (3 rd 4:30)
Best Scoring Run	4(3 rd 2:54)	4(3 rd 5:33)
Lead Changes	0	
Times Tied	0	
Time with Lead	00:00	09:39

Points from	ASU	VANDY
Turnovers	6	2
Paint	6	10
Second Chance	2	0
Fast Breaks	2	2
Bench	5	5

	Period by Period Scoring				
	1st	2nd	3rd	4th	TOT
ASU	10	8	16	8	42
VANDY	36	8	20	24	88



Alabama St. at Vanderbilt

11/20/23 Memorial Gymnasium, Nashville
2023-24 Women's Basketball

Game Time: 1:00 PM

Game Duration: 1:58

Attendance: 1,612

Officials: Gina Cross, Eric Koch, Teresa Stuck

Period 4

Quarter Starters:

VANDY	3 Cambridge J	12 Pierre K	13 Pissott J	23 Moore I	35 Washington S
ASU	4 Sanders D	13 Simmons A	21 Ward S	23 Carouthers C	24 Dunn W

Game Time	VANDY	Score	Diff	ASU
10:00				12 JACKSON K substitution out
10:00				30 HALL A substitution out
10:00				13 SIMMONS A substitution in
10:00				21 WARD S substitution in
09:48	13 PISSOTT J 3pt FG , jump shot made (14)	67-34	33	
09:48	35 WASHINGTON S assist (1)			
09:43	13 PISSOTT J foul drawn (3)			23 CAROUTHERS C foul personal (1 - 1)
09:42	23 MOORE I 2pt FG in the paint, layup made (9)	69-34	35	
09:42	23 MOORE I foul drawn (1)			21 WARD S foul shooting (5 - 2)
09:42				21 WARD S substitution out
09:42				20 HARRIS C substitution in
09:42	23 MOORE I free throw 1 - 1 missed			
09:38				20 HARRIS C defensive rebound (11)
09:34				13 SIMMONS A turnover travel (5)
09:17	35 WASHINGTON S 2pt FG from turnover in the paint, driving layup made (19)	71-34	37	
09:17	35 WASHINGTON S foul drawn (5)			20 HARRIS C foul shooting (2 - 3)
09:17	35 WASHINGTON S free throw 1 - 1 made (20)	72-34	38	
09:05				13 SIMMONS A turnover bad pass (6)
09:05				13 SIMMONS A substitution out
09:05				5 AKRIDGE S substitution in
08:41	12 PIERRE K 2pt FG from turnover in the paint, layup missed			
08:37	12 PIERRE K offensive rebound (3)			
08:37	12 PIERRE K 2pt FG from turnover second chance in the paint, layup made (8)	74-34	40	
08:14				20 HARRIS C 2pt FG in the paint, layup missed
08:11	3 CAMBRIDGE J defensive rebound (3)			
08:07	35 WASHINGTON S 2pt FG fast break in the paint, layup made (22)	76-34	42	
08:07	12 PIERRE K assist (3)			
07:46				5 AKRIDGE S 2pt FG in the paint, jump shot blocked
07:46	12 PIERRE K block (2)			
07:41	35 WASHINGTON S defensive rebound (7)			
07:38	13 PISSOTT J 2pt FG fast break in the paint, layup made (16)	78-34	44	
07:38	23 MOORE I assist (4)			
07:22				4 SANDERS D turnover bad pass (3)
07:22	13 PISSOTT J substitution out			
07:22	24 MAKURAT A substitution in			
07:22				23 CAROUTHERS C substitution out
07:22				30 HALL A substitution in
07:06	24 MAKURAT A 3pt FG from turnover, jump shot missed			
07:04				defensive rebound (32)
06:39	3 CAMBRIDGE J steal (5)			5 AKRIDGE S turnover bad pass (4)



Alabama St. at Vanderbilt

11/20/23 Memorial Gymnasium, Nashville
2023-24 Women's Basketball

Game Time: 1:00 PM
Game Duration: 1:58
Attendance: 1,612

Officials: Gina Cross, Eric Koch, Teresa Stuck

Game Time	VANDY	Score	Diff	ASU
06:36	35 WASHINGTON S 2pt FG fast break from turnover in the paint, layup made (24)	80-34	46	
06:36	3 CAMBRIDGE J assist (7)			
06:15	24 MAKURAT A foul personal (1 - 1)			20 HARRIS C foul drawn (5)
06:15	23 MOORE I substitution out			
06:15	35 WASHINGTON S substitution out			
06:15	4 GREENE M substitution in			
06:15	11 OLIVER J substitution in			
06:15				5 AKRIDGE S substitution out
06:15				24 DUNN W substitution out
06:15				12 JACKSON K substitution in
06:15				15 GRAY A substitution in
06:10	4 GREENE M foul personal (3 - 2)			4 SANDERS D foul drawn (2)
05:56				4 SANDERS D 2pt FG in the paint, driving layup missed
05:54	12 PIERRE K defensive rebound (4)			
05:47	24 MAKURAT A 3pt FG , jump shot missed			
05:43	12 PIERRE K offensive rebound (5)			
05:43	12 PIERRE K 2pt FG second chance in the paint, layup missed			
05:39				15 GRAY A defensive rebound (1)
05:31				20 HARRIS C 2pt FG in the paint, layup missed
05:31				offensive rebound (34)
05:31	3 CAMBRIDGE J substitution out			
05:31	21 LACHANCE B substitution in			
05:28		80-36	44	20 HARRIS C 2pt FG second chance in the paint, layup made (10)
05:28				4 SANDERS D assist (1)
05:12	12 PIERRE K foul offensive (3 - 3)			15 GRAY A foul drawn (2)
05:12	12 PIERRE K turnover offensive (1)			
05:12				Timeout 30 Sec
05:12	Timeout media			
05:12	12 PIERRE K substitution out			
05:12	5 ALLEN R substitution in			
04:57				30 HALL A 2pt FG from turnover outside the paint, jump shot missed
04:54				4 SANDERS D offensive rebound (4)
04:54	24 MAKURAT A foul personal (2 - 4)			20 HARRIS C foul drawn (6)
04:54	Timeout media			
04:54				30 HALL A substitution out
04:54				7 HICKS S substitution in
04:44				12 JACKSON K 2pt FG from turnover second chance in the paint, driving layup missed
04:40				7 HICKS S offensive rebound (1)
04:39				7 HICKS S 2pt FG from turnover second chance in the paint, jump shot missed
04:36	11 OLIVER J defensive rebound (4)			
04:21	24 MAKURAT A 2pt FG outside the paint, jump shot missed			
04:19	offensive rebound (26)			
04:19	4 GREENE M substitution out			
04:19	2 BROWN J substitution in			
04:09	11 OLIVER J 2pt FG second chance in the paint, jump shot missed			



Alabama St. at Vanderbilt

11/20/23 Memorial Gymnasium, Nashville
2023-24 Women's Basketball

Game Time: 1:00 PM
Game Duration: 1:58
Attendance: 1,612

Officials: Gina Cross, Eric Koch, Teresa Stuck

Game Time	VANDY	Score	Diff	ASU
04:06	11 OLIVER J offensive rebound (5)			
04:06	11 OLIVER J 2pt FG second chance in the paint, layup made (2)	82-36	46	
04:06	11 OLIVER J foul drawn (1)			7 HICKS S foul shooting (1 - 4)
04:06	11 OLIVER J free throw 1 - 1 made (3)	83-36	47	
03:39				7 HICKS S 2pt FG in the paint, layup missed
03:36	5 ALLEN R defensive rebound (2)			
03:29				15 GRAY A substitution out
03:29				24 DUNN W substitution in
03:29				4 SANDERS D substitution out
03:29				5 AKRIDGE S substitution in
03:09	11 OLIVER J turnover bad pass (1)			12 JACKSON K steal (4)
03:09	5 ALLEN R foul personal (1 - 5)			12 JACKSON K foul drawn (1)
03:09				12 JACKSON K free throw fast break 1 - 2 missed
03:09				offensive dead ball rebound (5)
03:08				12 JACKSON K free throw fast break 2 - 2 missed
03:06	11 OLIVER J defensive rebound (6)			
02:43	21 LACHANCE B turnover lost ball (1)			
02:43	11 OLIVER J substitution out			
02:43	14 MITCHELL A substitution in			
02:19				7 HICKS S 2pt FG from turnover in the paint, layup missed
02:15	14 MITCHELL A defensive rebound (2)			
01:54	24 MAKURAT A turnover bad pass (2)			24 DUNN W steal (1)
01:50				24 DUNN W 2pt FG from turnover in the paint, layup blocked
01:50	24 MAKURAT A block (1)			
01:43				20 HARRIS C offensive rebound (12)
01:42		83-38	45	20 HARRIS C 2pt FG from turnover second chance in the paint, layup made (12)
01:32	24 MAKURAT A 3pt FG , jump shot made (11)	86-38	48	
01:32	5 ALLEN R assist (1)			
01:08	14 MITCHELL A foul shooting (1 - 6)			20 HARRIS C foul drawn (7)
01:08		86-39	47	20 HARRIS C free throw 1 - 2 made (13)
01:06				20 HARRIS C free throw 2 - 2 missed
01:05				offensive rebound (38)
01:03		86-42	44	24 DUNN W 3pt FG second chance, jump shot made (11)
01:03				5 AKRIDGE S assist (2)
00:50	2 BROWN J turnover bad pass (2)			12 JACKSON K steal (5)
00:47				20 HARRIS C substitution out
00:47				30 HALL A substitution in
00:47	5 ALLEN R substitution out			
00:47	11 OLIVER J substitution in			
00:39				30 HALL A 2pt FG from turnover in the paint, turnaround jump shot missed
00:35	14 MITCHELL A defensive rebound (3)			
00:21	14 MITCHELL A 2pt FG in the paint, jump shot made (2)	88-42	46	
00:21	2 BROWN J assist (2)			
00:00				24 DUNN W 3pt FG , jump shot missed
00:00	14 MITCHELL A defensive rebound (4)			
END OF GAME				
VANDY 88-42 ASU				



Alabama St. at Vanderbilt

11/20/23 Memorial Gymnasium, Nashville
2023-24 Women's Basketball

Game Time: 1:00 PM
Game Duration: 1:58
Attendance: 1,612

Officials: Gina Cross, Eric Koch, Teresa Stuck

Alabama St. - 8

NO.	Name	F	Min	FG			Rebounds			Fouls		TP	AS	TO	ST	Blocks		+/-
				M-A	M-A	M-A	OR	DR	TOT	PF	FD					BS	BA	
20	Cordasia Harris	F	08:55	2-4	0-0	1-2	1	1	2	1	3	5	0	0	0	0	0	-9
21	Shmya Ward	F	00:18	0-0	0-0	0-0	0	0	0	1	0	0	0	0	0	0	0	-5
4	DaKiyah Sanders	G	06:31	0-1	0-0	0-0	1	0	1	0	1	0	1	1	0	0	0	-17
13	Ariana Simmons	G	00:55	0-0	0-0	0-0	0	0	0	0	0	0	0	2	0	0	0	-8
24	Whitney Dunn	G	07:14	1-3	1-2	0-0	0	0	0	0	0	3	0	0	1	0	1	-15
23	Che'Mya Carouthers		02:38	0-0	0-0	0-0	0	0	0	1	0	0	0	0	0	0	0	-14
5	Solangelei Akridge		06:19	0-1	0-0	0-0	0	0	0	0	0	0	1	1	0	0	1	-7
30	Anaja Hall		03:15	0-2	0-0	0-0	0	0	0	0	0	0	0	0	0	0	0	-2
12	Kristian Jackson		06:15	0-1	0-0	0-2	0	0	0	0	1	0	0	0	2	0	0	0
15	Ashley Gray		02:46	0-0	0-0	0-0	0	1	1	0	1	0	0	0	0	0	0	-1
7	Summer Hicks		04:54	0-3	0-0	0-0	1	0	1	1	0	0	0	0	0	0	0	-2
Team							2	1	3			0		0				
Totals				3-15	1-2	1-4	5	3	8	4	6	8	2	4	3	0	2	-16

Shooting By Period		
4 th FG%	3-15	20.0%
3PT%	1-2	50.0%
FT%	1-4	25%
GM FG%	3-15	20.0%
3PT%	1-2	50.0%
FT%	1-4	25.0%

Dead Ball Rebounds: 1, 0

Technical Fouls::NONE

Vanderbilt - 24

NO.	Name	F	Min	FG			Rebounds			Fouls		TP	AS	TO	ST	Blocks		+/-
				M-A	M-A	M-A	OR	DR	TOT	PF	FD					BS	BA	
35	Sacha Washington	F	03:45	3-3	0-0	1-1	0	1	1	0	1	7	1	0	0	0	0	16
3	Jordyn Cambridge	G	04:29	0-0	0-0	0-0	0	1	1	0	0	0	1	0	1	0	0	16
11	Jordyn Oliver	G	04:19	1-2	0-0	1-1	1	2	3	0	1	3	0	1	0	0	0	3
13	Justine Pissott	G	02:38	2-2	1-1	0-0	0	0	0	0	1	5	0	0	0	0	0	14
23	Iyana Moore	G	03:45	1-1	0-0	0-1	0	0	0	0	1	2	1	0	0	0	0	16
12	Khamil Pierre		04:48	1-3	0-0	0-0	2	1	3	1	0	2	1	1	0	1	0	14
24	Aga Makurat		07:22	1-4	1-3	0-0	0	0	0	2	0	3	0	1	0	1	0	2
4	Madison Greene		01:56	0-0	0-0	0-0	0	0	0	1	0	0	0	0	0	0	0	-2
21	Bella LaChance		05:31	0-0	0-0	0-0	0	0	0	0	0	0	0	1	0	0	0	0
5	Ryanne Allen		04:25	0-0	0-0	0-0	0	1	1	1	0	0	1	0	0	0	0	0
2	Jada Brown		04:19	0-0	0-0	0-0	0	0	0	0	0	0	1	1	0	0	0	2
14	Aiyana Mitchell		02:43	1-1	0-0	0-0	0	3	3	1	0	2	0	0	0	0	0	-1
Team							1	0	1			0		0				
Totals				10-16	2-4	2-3	4	9	13	6	4	24	6	5	1	2	0	16

Shooting By Period		
4 th FG%	10-16	62.5%
3PT%	2-4	50.0%
FT%	2-3	66.7%
GM FG%	10-16	62.5%
3PT%	2-4	50.0%
FT%	2-3	66.7%

Dead Ball Rebounds: 0, 0

Technical Fouls::NONE

	ASU	VANDY
Biggest lead	0 (1 st 10:00)	48 (4 th 1:32)
Best Scoring Run	4(4 th 1:03)	16(4 th 6:36)
Lead Changes	0	
Times Tied	0	
Time with Lead	00:00	09:48

	ASU	VANDY
Points from		
Turnovers	2	7
Paint	4	16
Second Chance	7	5
Fast Breaks	0	6
Bench	0	7

	Period by Period Scoring				
	1st	2nd	3rd	4th	TOT
ASU	10	8	16	8	42
VANDY	36	8	20	24	88



Alabama St. at Vanderbilt

11/20/23 Memorial Gymnasium, Nashville
2023-24 Women's Basketball

Game Time: 1:00 PM
Game Duration: 1:58
Attendance: 1,612

Officials: Gina Cross, Eric Koch, Teresa Stuck

Alabama St. - 24

NO.	Name	Min	FG			Rebounds			Fouls		TP	AS	TO	ST	Blocks		+/-
			M-A	3P	FT	OR	DR	TOT	PF	FD					BS	BA	
20	Cordasia Harris	F 15:12	4-8	0-0	5-10	4	3	7	2	7	13	0	1	1	1	0	-8
21	Shmya Ward	F 01:06	0-0	0-0	0-0	0	0	0	2	0	0	0	0	0	0	0	-8
4	DaKiyah Sanders	G 12:49	0-2	0-0	1-2	1	1	2	0	2	1	1	1	0	0	0	-23
13	Ariana Simmons	G 02:22	0-0	0-0	0-0	0	0	0	0	0	0	0	2	0	0	0	-11
24	Whitney Dunn	G 14:43	2-7	1-3	0-0	1	0	1	0	0	5	0	1	1	0	1	-22
30	Anaja Hall	07:16	1-4	0-0	1-2	0	0	0	0	1	3	0	0	0	1	0	-2
5	Solangelei Akridge	13:33	0-3	0-0	0-0	0	3	3	0	1	0	1	3	0	0	1	-8
0	Alyssa Green-White	04:00	0-1	0-0	2-2	0	0	0	1	1	2	0	0	0	0	0	0
2	Ryin Tillis	02:24	0-1	0-0	0-0	1	0	1	1	0	0	0	0	0	0	0	-5
12	Kristian Jackson	11:16	0-1	0-0	0-2	0	0	0	2	1	0	1	0	5	0	0	2
15	Ashley Gray	04:19	0-0	0-0	0-0	0	1	1	0	1	0	0	0	0	0	0	-2
23	Che'Mya Carouthers	06:06	0-0	0-0	0-0	0	0	0	1	0	0	1	0	1	0	0	-11
7	Summer Hicks	04:54	0-3	0-0	0-0	1	0	1	1	0	0	0	0	0	0	0	-2
Team						3	1	4			0		0				
Totals			7-30	1-3	9-18	11	9	20	10	14	24	4	8	8	2	2	-20

Shooting By Period		
3 rd FG%	4-15	26.7%
3PT%	0-1	0.0%
FT%	8-14	57.1%
4 th FG%	3-15	20.0%
3PT%	1-2	50.0%
FT%	1-4	25%
GM FG%	7-30	23.3%
3PT%	1-3	33.3%
FT%	9-18	50.0%

Dead Ball Rebounds: 5, 0

Technical Fouls::NONE

Vanderbilt - 44

NO.	Name	Min	FG			Rebounds			Fouls		TP	AS	TO	ST	Blocks		+/-
			M-A	3P	FT	OR	DR	TOT	PF	FD					BS	BA	
35	Sacha Washington	F 12:25	4-6	0-0	3-5	0	4	4	2	3	11	1	1	1	0	2	20
3	Jordyn Cambridge	G 12:22	3-3	0-0	2-3	0	1	1	0	2	8	2	1	3	0	0	22
11	Jordyn Oliver	G 12:39	1-2	0-0	1-1	1	4	5	0	1	3	1	1	0	0	0	2
13	Justine Pissott	G 09:02	3-4	1-2	1-1	0	1	1	2	2	8	0	0	0	0	0	17
23	Iyana Moore	G 11:41	1-3	0-1	0-1	0	0	0	2	1	2	2	2	0	0	0	15
4	Madison Greene	06:07	0-0	0-0	0-0	0	0	0	2	0	0	1	1	0	0	0	1
24	Aga Makurat	10:58	2-5	2-4	0-0	0	0	0	2	1	6	0	2	0	1	0	3
12	Khamil Pierre	07:48	2-4	0-0	0-0	2	1	3	2	0	4	1	1	1	1	0	19
21	Bella LaChance	05:31	0-0	0-0	0-0	0	0	0	0	0	0	0	1	0	0	0	0
5	Ryanne Allen	04:25	0-0	0-0	0-0	0	1	1	1	0	0	1	0	0	0	0	0
2	Jada Brown	04:19	0-0	0-0	0-0	0	0	0	0	0	0	1	1	0	0	0	2
14	Aiyana Mitchell	02:43	1-1	0-0	0-0	0	3	3	1	0	2	0	0	0	0	0	-1
Team						1	1	2			0		0				
Totals			17-28	3-7	7-11	4	16	20	14	10	44	10	11	5	2	2	20

Shooting By Period		
3 rd FG%	7-12	58.3%
3PT%	1-3	33.3%
FT%	5-8	62.5%
4 th FG%	10-16	62.5%
3PT%	2-4	50.0%
FT%	2-3	66.7%
GM FG%	17-28	60.7%
3PT%	3-7	42.9%
FT%	7-11	63.6%

Dead Ball Rebounds: 2, 0

Technical Fouls::NONE

	ASU	VANDY
Biggest lead	0 (1 st 10:00)	48 (4 th 1:32)
Best Scoring Run	4(3 rd 2:54)	18(4 th 6:36)
Lead Changes	0	
Times Tied	0	
Time with Lead	00:00	19:39

	ASU	VANDY
Points from		
Turnovers	8	9
Paint	10	26
Second Chance	9	5
Fast Breaks	2	8
Bench	5	12

Period by Period Scoring					
	1st	2nd	3rd	4th	TOT
ASU	10	8	16	8	42
VANDY	36	8	20	24	88



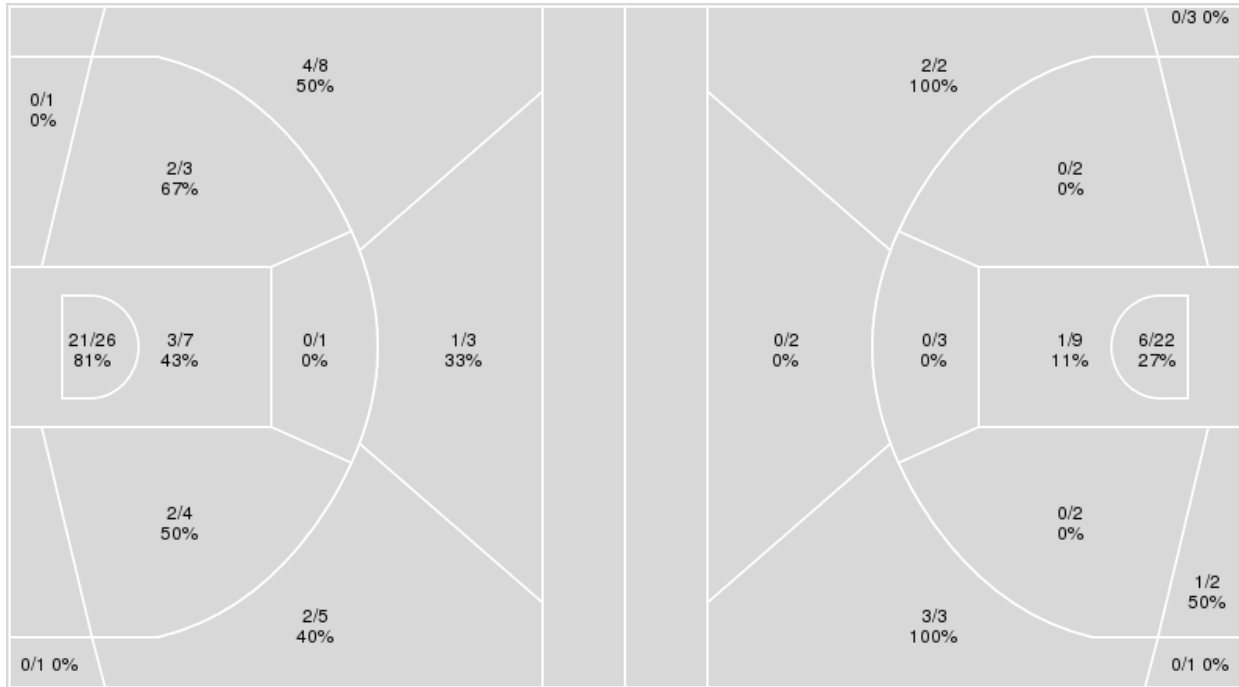
Officials: Gina Cross, Eric Koch, Teresa Stuck

{ Players => 2, 3, 4, 5, 10, 11, 12, 13, 14, 21, 23, 24, 35; } FG Types => All; Results => All;

{ Players => 0, 1, 2, 3, 4, 5, 7, 11, 12, 13, 15, 20, 21, 23, 24, 30, 33, 42; } FG Types => All; Results => All;

Vanderbilt

Alabama St.



Vanderbilt	M/A	%
Field Goals	35/59	59
2 Points	28/42	67
3 Points	7/17	41
Free Throws	11/17	65

Alabama St.	M/A	%
Field Goals	13/51	25
2 Points	8/40	20
3 Points	5/11	45
Free Throws	11/20	55



Alabama St. at Vanderbilt

11/20/23 Memorial Gymnasium, Nashville
2023-24 Women's Basketball

Game Time: 1:00 PM
Game Duration: 1:58
Attendance: 1,612

Officials: Gina Cross, Eric Koch, Teresa Stuck

Alabama St.

No	Name	Mins		Score		Points Diff		Points per Min		Assists		Rebounds		Steals		Turnovers	
		On	Off	On	Off	On	Off	On	Off	On	Off	On	Off	On	Off	On	Off
0	Alyssa Green-White	08:28	31:32	14 - 15	28 - 73	-1	-45	1.65	0.89	1	7	9	29	2	8	3	22
2	Ryin Tillis	07:31	32:29	7 - 20	35 - 68	-13	-33	0.93	1.08	1	7	8	30	2	8	7	18
4	DaKiyah Sanders	24:26	15:34	21 - 59	21 - 29	-38	-8	0.86	1.35	5	3	22	16	4	6	16	9
5	Solangelei Akridge	24:07	15:54	29 - 49	13 - 39	-20	-26	1.20	0.82	4	4	23	15	7	3	13	12
7	Summer Hicks	04:54	35:06	6 - 8	36 - 80	-2	-44	1.22	1.03	1	7	3	35	3	7	0	25
12	Kristian Jackson	16:14	23:46	24 - 28	18 - 60	-4	-42	1.48	0.76	5	3	15	23	7	3	7	18
13	Ariana Simmons	14:24	25:37	8 - 39	34 - 49	-31	-15	0.56	1.33	2	6	15	23	2	8	14	11
15	Ashley Gray	12:19	27:41	11 - 25	31 - 63	-14	-32	0.89	1.12	2	6	13	25	1	9	7	18
20	Cordasia Harris	27:35	12:25	30 - 58	12 - 30	-28	-18	1.09	0.97	6	2	27	11	8	2	15	10
21	Shmya Ward	10:04	29:57	8 - 22	34 - 66	-14	-32	0.80	1.14	2	6	10	28	1	9	9	16
23	Che'Mya Carouthers	11:01	28:59	11 - 30	31 - 58	-19	-27	1.00	1.07	2	6	6	32	4	6	10	15
24	Whitney Dunn	25:16	14:44	29 - 64	13 - 24	-35	-11	1.15	0.88	6	2	23	15	7	3	16	9
30	Anaja Hall	15:52	24:08	15 - 27	27 - 61	-12	-34	0.95	1.12	4	4	16	22	2	8	8	17

Vanderbilt

No	Name	Mins		Score		Points Diff		Points per Min		Assists		Rebounds		Steals		Turnovers	
		On	Off	On	Off	On	Off	On	Off	On	Off	On	Off	On	Off	On	Off
2	Jada Brown	09:19	30:41	12 - 11	76 - 31	1	45	1.29	2.48	3	21	9	23	1	14	5	11
3	Jordyn Cambridge	27:42	12:18	66 - 24	22 - 18	42	4	2.38	1.79	18	6	21	11	12	3	6	10
4	Madison Greene	14:17	25:43	26 - 17	62 - 25	9	37	1.82	2.41	6	18	11	21	5	10	6	10
5	Ryanne Allen	09:25	30:35	10 - 11	78 - 31	-1	47	1.06	2.55	2	22	9	23	1	14	5	11
11	Jordyn Oliver	21:20	18:40	41 - 24	47 - 18	17	29	1.92	2.52	11	13	20	12	9	6	13	3
12	Khamil Pierre	16:04	23:56	45 - 14	43 - 28	31	15	2.80	1.80	13	11	12	20	5	10	2	14
13	Justine Pissott	19:20	20:40	47 - 16	41 - 26	31	15	2.43	1.98	13	11	14	18	10	5	8	8
14	Aiyana Mitchell	06:49	33:11	7 - 11	81 - 31	-4	50	1.03	2.44	2	22	5	27	1	14	4	12
21	Bella LaChance	06:31	33:29	8 - 11	80 - 31	-3	49	1.23	2.39	2	22	9	23	0	15	6	10
23	Iyana Moore	22:11	17:49	64 - 21	24 - 21	43	3	2.89	1.35	19	5	14	18	12	3	9	7
24	Aga Makurat	20:40	19:20	41 - 26	47 - 16	15	31	1.98	2.43	11	13	18	14	5	10	8	8
35	Sacha Washington	26:22	13:38	73 - 24	15 - 18	49	-3	2.77	1.10	20	4	18	14	14	1	8	8

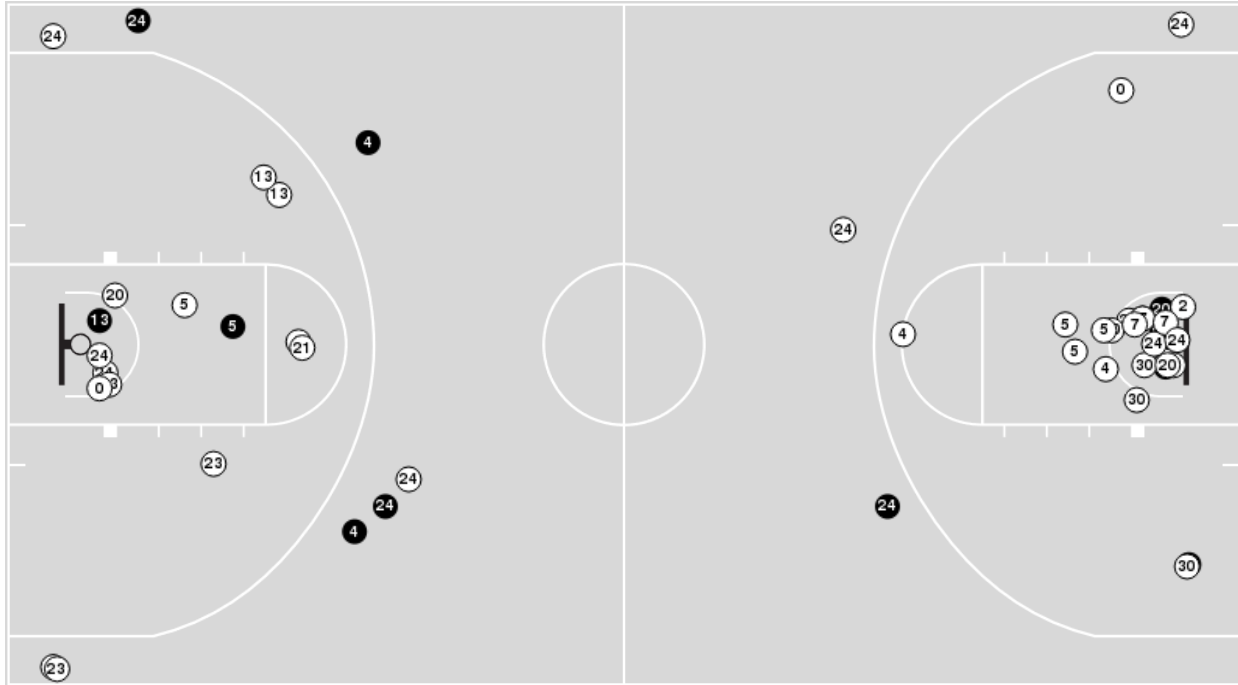


Officials: Gina Cross, Eric Koch, Teresa Stuck

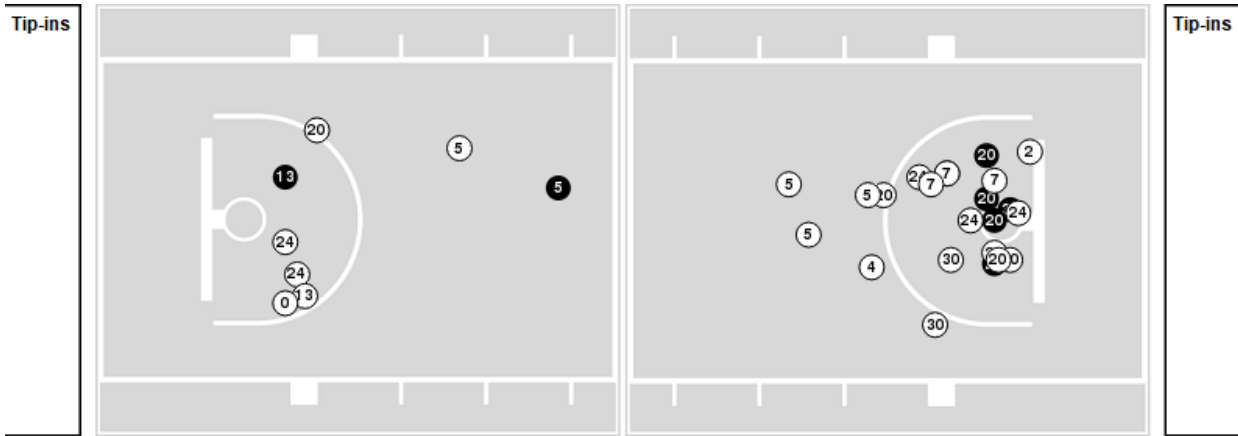
Players => 0, 1, 2, 3, 4, 5, 7, 11, 12, 13, 15, 20, 21, 23, 24, 30, 33, 42FG Types=>AllResults=>All

Alabama St.

All Field Goals



Blow Up Chart



● Made ○ Missed N - Player Number

Alabama St.	M/A	%
Field Goals	13/51	25
2 Points	8/40	20
3 Points	5/11	45
Free Throws	11/20	55

Alabama St.	M/A	%
Points in the Paint	14 (7 / 31)	23
Fast Break Points	2 (2/6)	33
Second Chance Points	11 (6/15)	40
Effective FG%	30	

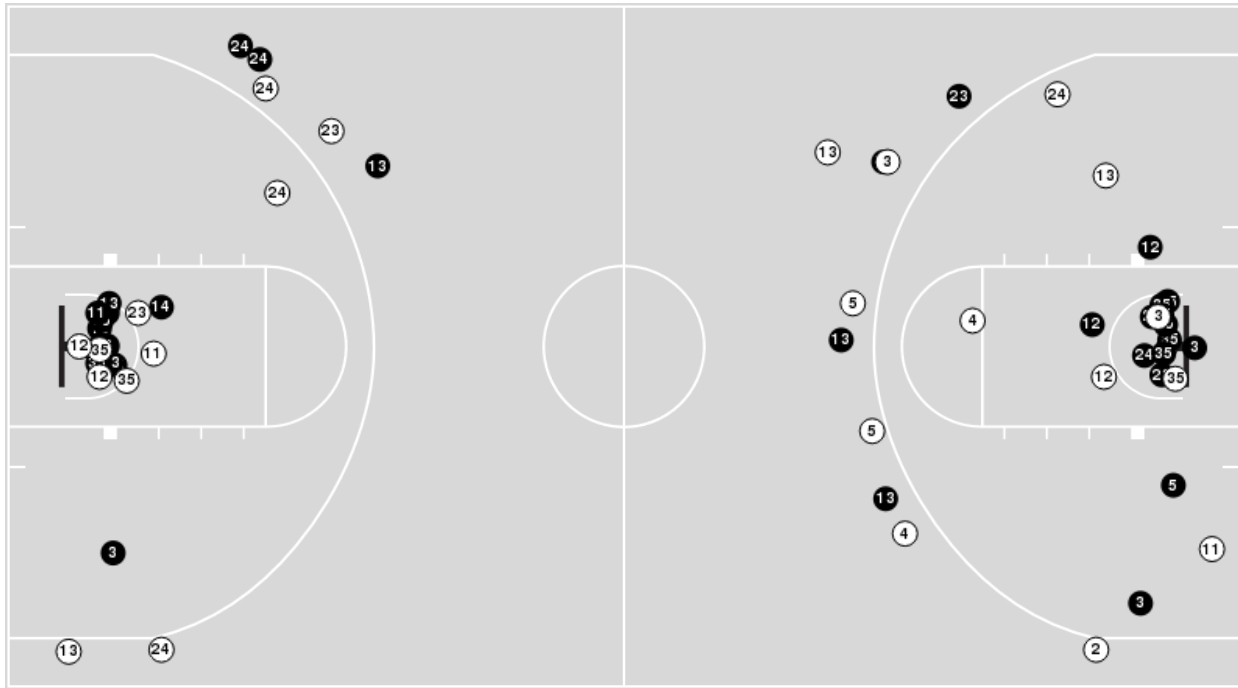


Officials: Gina Cross, Eric Koch, Teresa Stuck

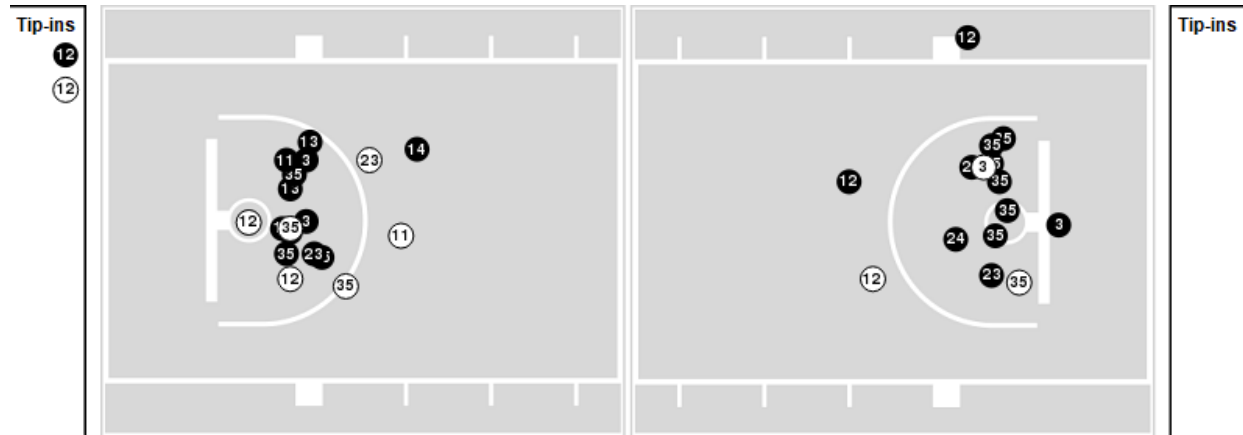
Players => 2, 3, 4, 5, 10, 11, 12, 13, 14, 21, 23, 24, 35FG Types=>AllResults=>All

Vanderbilt

All Field Goals



Blow Up Chart



● Made ○ Missed N - Player Number

Vanderbilt	M/A	%
Field Goals	35/59	59
2 Points	28/42	67
3 Points	7/17	41
Free Throws	11/17	65

Vanderbilt	M/A	%
Points in the Paint	48 (24 / 33)	73
Fast Break Points	14 (8/9)	89
Second Chance Points	8 (4/8)	50
Effective FG%	65	



Alabama St. at Vanderbilt

11/20/23 Memorial Gymnasium, Nashville
2023-24 Women's Basketball

Game Time: 1:00 PM
Game Duration: 1:58
Attendance: 1,612

Officials: Gina Cross, Eric Koch, Teresa Stuck

Alabama St.

Lineup	Quarter On	Time On	Quarter Off	Time Off	Time on Court	Score	Score Diff	Reb	Stl	Tov	Ass	PPP
4- Sanders D/ 13- Simmons A/ 20- Harris C/ 21- Ward S/ 24- Dunn W/	1	10:00	1	08:18	01:42	0-4	-4	2	1	2	0	0.0000
2- Tillis R/ 4- Sanders D/ 13- Simmons A/ 20- Harris C/ 24- Dunn W/	1	08:18	1	05:40	02:38	5-13	-8	1	0	2	1	1.0000
2- Tillis R/ 5- Akridge S/ 13- Simmons A/ 20- Harris C/ 24- Dunn W/	1	05:40	1	05:40	00:00	0-0	0	0	0	0	0	0.0000
5- Akridge S/ 13- Simmons A/ 20- Harris C/ 21- Ward S/ 24- Dunn W/	1	05:40	1	05:21	00:19	0-2	-2	1	0	1	0	0.0000
5- Akridge S/ 15- Gray A/ 20- Harris C/ 23- Carouthers C/ 24- Dunn W/	1	05:21	1	05:20	00:01	0-1	-1	0	0	0	0	0.0000
5- Akridge S/ 12- Jackson K/ 15- Gray A/ 21- Ward S/ 23- Carouthers C/	1	05:20	1	03:36	01:44	2-2	0	1	0	2	0	0.6944
5- Akridge S/ 12- Jackson K/ 15- Gray A/ 23- Carouthers C/ 30- Hall A/	1	03:36	1	02:43	00:53	0-7	-7	0	0	2	0	0.0000
4- Sanders D/ 5- Akridge S/ 15- Gray A/ 20- Harris C/ 30- Hall A/	1	02:43	1	02:42	00:01	0-0	0	1	0	0	0	0.0000
4- Sanders D/ 5- Akridge S/ 15- Gray A/ 21- Ward S/ 30- Hall A/	1	02:42	1	00:32	02:35	3-4	-1	0	0	0	1	1.0000
4- Sanders D/ 13- Simmons A/ 15- Gray A/ 20- Harris C/ 30- Hall A/	1	00:32	1	00:00	00:32	0-3	-3	1	0	1	0	0.0000
2- Tillis R/ 4- Sanders D/ 13- Simmons A/ 20- Harris C/ 23- Carouthers C/	1	00:00	2	07:47	02:13	0-0	0	1	1	2	0	0.0000
2- Tillis R/ 5- Akridge S/ 13- Simmons A/ 20- Harris C/ 23- Carouthers C/	2	07:47	2	07:43	00:04	0-0	0	1	0	0	0	0.0000
2- Tillis R/ 5- Akridge S/ 13- Simmons A/ 20- Harris C/ 24- Dunn W/	2	07:43	2	07:31	00:12	0-0	0	1	0	1	0	0.0000
0- Green-White A/ 5- Akridge S/ 13- Simmons A/ 20- Harris C/ 24- Dunn W/	2	07:31	2	05:00	02:31	3-4	-1	2	0	0	1	1.5000
0- Green-White A/ 5- Akridge S/ 15- Gray A/ 24- Dunn W/ 30- Hall A/	2	05:00	2	03:03	01:57	2-2	0	2	0	1	0	0.6667
5- Akridge S/ 13- Simmons A/ 15- Gray A/ 21- Ward S/ 30- Hall A/	2	03:03	2	02:21	00:42	0-0	0	1	0	1	0	0.0000
4- Sanders D/ 12- Jackson K/ 13- Simmons A/ 21- Ward S/ 30- Hall A/	2	02:21	2	01:13	01:08	0-2	-2	1	0	1	0	0.0000
4- Sanders D/ 12- Jackson K/ 21- Ward S/ 24- Dunn W/ 30- Hall A/	2	01:13	3	10:00	01:13	3-0	3	2	0	1	1	1.5000
4- Sanders D/ 13- Simmons A/ 20- Harris C/ 21- Ward S/ 24- Dunn W/	3	10:00	3	09:12	00:48	0-3	-3	2	0	1	0	0.0000
4- Sanders D/ 13- Simmons A/ 20- Harris C/ 24- Dunn W/ 30- Hall A/	3	09:12	3	08:33	00:39	0-0	0	0	0	0	0	0.0000
4- Sanders D/ 5- Akridge S/ 20- Harris C/ 24- Dunn W/ 30- Hall A/	3	08:33	3	06:30	02:03	2-2	0	4	1	0	0	0.5319
0- Green-White A/ 4- Sanders D/ 5- Akridge S/ 20- Harris C/ 24- Dunn W/	3	06:30	3	05:56	00:34	3-2	1	0	0	0	0	1.5957
0- Green-White A/ 2- Tillis R/ 4- Sanders D/ 5- Akridge S/ 24- Dunn W/	3	05:56	3	05:01	00:55	0-4	-4	1	0	2	0	0.0000
0- Green-White A/ 2- Tillis R/ 5- Akridge S/ 12- Jackson K/ 15- Gray A/	3	05:01	3	03:32	01:29	2-3	-1	3	1	0	0	1.0638
0- Green-White A/ 5- Akridge S/ 12- Jackson K/ 15- Gray A/ 20- Harris C/	3	03:32	3	03:28	00:04	0-0	0	0	0	0	0	0.0000
0- Green-White A/ 5- Akridge S/ 12- Jackson K/ 20- Harris C/ 23- Carouthers C/	3	03:28	3	02:30	00:58	4-0	4	1	1	0	0	1.4493
5- Akridge S/ 12- Jackson K/ 20- Harris C/ 23- Carouthers C/ 24- Dunn W/	3	02:30	3	01:19	01:11	2-3	-1	1	1	1	1	0.6667
4- Sanders D/ 12- Jackson K/ 23- Carouthers C/ 24- Dunn W/ 30- Hall A/	3	01:19	4	10:00	01:19	3-3	0	0	1	0	1	1.5957
4- Sanders D/ 13- Simmons A/ 21- Ward S/ 23- Carouthers C/ 24- Dunn W/	4	10:00	4	09:42	00:18	0-5	-5	0	0	0	0	0.0000
4- Sanders D/ 13- Simmons A/ 20- Harris C/ 23- Carouthers C/ 24- Dunn W/	4	09:42	4	09:05	00:37	0-3	-3	1	0	2	0	0.0000
4- Sanders D/ 5- Akridge S/ 20- Harris C/ 23- Carouthers C/ 24- Dunn W/	4	09:05	4	07:22	01:43	0-6	-6	0	0	1	0	0.0000
4- Sanders D/ 5- Akridge S/ 20- Harris C/ 24- Dunn W/ 30- Hall A/	4	07:22	4	06:15	01:07	0-2	-2	1	0	1	0	0.0000
4- Sanders D/ 12- Jackson K/ 15- Gray A/ 20- Harris C/ 30- Hall A/	4	06:15	4	04:54	01:21	2-0	2	3	0	0	1	1.0000
4- Sanders D/ 7- Hicks S/ 12- Jackson K/ 15- Gray A/ 20- Harris C/	4	04:54	4	03:29	01:25	0-3	-3	1	0	0	0	0.0000
4- Sanders D/ 7- Hicks S/ 12- Jackson K/ 20- Harris C/ 24- Dunn W/	4	03:29	4	03:29	00:00	0-0	0	0	0	0	0	0.0000
5- Akridge S/ 7- Hicks S/ 12- Jackson K/ 20- Harris C/ 24- Dunn W/	4	03:29	4	00:47	02:42	6-3	3	2	3	0	1	1.5957
5- Akridge S/ 7- Hicks S/ 12- Jackson K/ 24- Dunn W/ 30- Hall A/	4	00:47	4	00:00	00:47	0-2	-2	0	0	0	0	0.0000



Alabama St. at Vanderbilt

11/20/23 Memorial Gymnasium, Nashville
2023-24 Women's Basketball

Game Time: 1:00 PM
Game Duration: 1:58
Attendance: 1,612

Officials: Gina Cross, Eric Koch, Teresa Stuck

Vanderbilt

Lineup	Quarter On	Time On	Quarter Off	Time Off	Time on Court	Score	Score Diff	Reb	Stl	Tov	Ass	PPP
3- Cambridge J/ 11- Oliver J/ 13- Pissott J/ 23- Moore I/ 35- Washington S/	1	10:00	1	06:33	03:27	11-3	8	3	4	1	4	1.5714
4- Greene M/ 11- Oliver J/ 13- Pissott J/ 23- Moore I/ 35- Washington S/	1	06:33	1	05:14	01:19	9-2	7	0	1	0	3	2.6163
4- Greene M/ 11- Oliver J/ 23- Moore I/ 24- Makurat A/ 35- Washington S/	1	05:14	1	04:52	00:22	2-0	2	0	0	0	0	2.0000
3- Cambridge J/ 4- Greene M/ 11- Oliver J/ 14- Mitchell A/ 24- Makurat A/	1	04:52	1	03:36	01:16	0-2	-2	0	0	1	0	0.0000
3- Cambridge J/ 12- Pierre K/ 23- Moore I/ 24- Makurat A/ 35- Washington S/	1	03:36	1	00:00	03:35	14-3	11	2	2	0	5	1.9126
4- Greene M/ 11- Oliver J/ 13- Pissott J/ 23- Moore I/ 35- Washington S/	1	00:00	2	08:14	01:46	0-0	0	1	2	2	0	0.0000
3- Cambridge J/ 4- Greene M/ 11- Oliver J/ 13- Pissott J/ 35- Washington S/	2	08:14	2	07:43	00:31	0-0	0	0	0	0	0	0.0000
3- Cambridge J/ 4- Greene M/ 12- Pierre K/ 13- Pissott J/ 35- Washington S/	2	07:43	2	07:31	00:12	0-0	0	0	0	0	0	0.0000
3- Cambridge J/ 4- Greene M/ 12- Pierre K/ 24- Makurat A/ 35- Washington S/	2	07:31	2	05:00	02:31	4-3	1	3	0	0	1	1.3333
2- Brown J/ 3- Cambridge J/ 5- Allen R/ 12- Pierre K/ 24- Makurat A/	2	05:00	2	03:03	01:57	2-2	0	1	0	0	1	1.0000
2- Brown J/ 3- Cambridge J/ 5- Allen R/ 13- Pissott J/ 14- Mitchell A/	2	03:03	2	01:13	01:50	2-0	2	1	1	0	0	0.6944
2- Brown J/ 5- Allen R/ 13- Pissott J/ 14- Mitchell A/ 21- LaChance B/	2	01:13	2	00:12	01:00	0-3	-3	1	0	1	0	0.0000
2- Brown J/ 4- Greene M/ 5- Allen R/ 13- Pissott J/ 35- Washington S/	2	00:12	3	10:00	00:12	0-0	0	0	0	0	0	0.0000
3- Cambridge J/ 11- Oliver J/ 13- Pissott J/ 23- Moore I/ 35- Washington S/	3	10:00	3	07:05	02:55	3-2	1	3	1	2	0	0.4658
3- Cambridge J/ 4- Greene M/ 11- Oliver J/ 13- Pissott J/ 35- Washington S/	3	07:05	3	06:30	00:35	2-0	2	1	0	0	1	2.0000
3- Cambridge J/ 4- Greene M/ 11- Oliver J/ 24- Makurat A/ 35- Washington S/	3	06:30	3	05:56	00:34	2-3	-1	1	0	0	0	2.0000
3- Cambridge J/ 4- Greene M/ 12- Pierre K/ 24- Makurat A/ 35- Washington S/	3	05:56	3	05:01	00:55	4-0	4	0	2	0	0	2.1277
4- Greene M/ 12- Pierre K/ 23- Moore I/ 24- Makurat A/ 35- Washington S/	3	05:01	3	04:48	00:13	0-0	0	0	0	0	0	0.0000
4- Greene M/ 11- Oliver J/ 12- Pierre K/ 23- Moore I/ 24- Makurat A/	3	04:48	3	03:28	01:20	3-3	0	1	0	1	1	1.5000
4- Greene M/ 11- Oliver J/ 23- Moore I/ 24- Makurat A/ 35- Washington S/	3	03:28	3	02:54	00:34	0-2	-2	0	0	1	0	0.0000
3- Cambridge J/ 11- Oliver J/ 13- Pissott J/ 23- Moore I/ 35- Washington S/	3	02:54	3	00:32	02:22	4-5	-1	1	1	2	1	0.7519
3- Cambridge J/ 12- Pierre K/ 13- Pissott J/ 23- Moore I/ 35- Washington S/	3	00:32	4	07:22	03:10	16-1	15	3	0	0	4	2.0305
3- Cambridge J/ 12- Pierre K/ 23- Moore I/ 24- Makurat A/ 35- Washington S/	4	07:22	4	06:15	01:07	2-0	2	0	1	0	1	1.0000
3- Cambridge J/ 4- Greene M/ 11- Oliver J/ 12- Pierre K/ 24- Makurat A/	4	06:15	4	05:31	00:44	0-0	0	2	0	0	0	0.0000
4- Greene M/ 11- Oliver J/ 12- Pierre K/ 21- LaChance B/ 24- Makurat A/	4	05:31	4	05:12	00:19	0-2	-2	0	0	1	0	0.0000
4- Greene M/ 5- Allen R/ 11- Oliver J/ 21- LaChance B/ 24- Makurat A/	4	05:12	4	04:19	00:53	0-0	0	2	0	0	0	0.0000
2- Brown J/ 5- Allen R/ 11- Oliver J/ 21- LaChance B/ 24- Makurat A/	4	04:19	4	02:43	01:36	3-0	3	3	0	2	0	0.8721
2- Brown J/ 5- Allen R/ 14- Mitchell A/ 21- LaChance B/ 24- Makurat A/	4	02:43	4	00:47	01:56	3-6	-3	1	0	2	1	1.0000
2- Brown J/ 11- Oliver J/ 14- Mitchell A/ 21- LaChance B/ 24- Makurat A/	4	00:47	4	00:00	00:47	2-0	2	2	0	0	1	2.0000



Alabama St. at Vanderbilt

11/20/23 Memorial Gymnasium, Nashville
2023-24 Women's Basketball

Game Time: 1:00 PM
Game Duration: 1:58
Attendance: 1,612

Officials: Gina Cross, Eric Koch, Teresa Stuck

Alabama St.

Lineup	Time	Score	Score Diff	Pts/Min	Reb	Stl	Tov	Ass	PPP
4- Sanders D/ 5- Akridge S/ 20- Harris C/ 24- Dunn W/ 30- Hall A/	03:10	2-4	-2	0.6316	5	1	1	0	0.4202
5- Akridge S/ 7- Hicks S/ 12- Jackson K/ 20- Harris C/ 24- Dunn W/	02:42	6-3	3	2.2222	2	3	0	1	1.5957
2- Tillis R/ 4- Sanders D/ 13- Simmons A/ 20- Harris C/ 24- Dunn W/	02:38	5-13	-8	1.8987	1	0	2	1	1.0000
4- Sanders D/ 5- Akridge S/ 15- Gray A/ 21- Ward S/ 30- Hall A/	02:35	3-4	-1	1.1583	0	0	0	1	1.0000
0- Green-White A/ 5- Akridge S/ 13- Simmons A/ 20- Harris C/ 24- Dunn W/	02:31	3-4	-1	1.1921	2	0	0	1	1.5000
4- Sanders D/ 13- Simmons A/ 20- Harris C/ 21- Ward S/ 24- Dunn W/	02:30	0-7	-7	0.0000	4	1	3	0	0.0000
2- Tillis R/ 4- Sanders D/ 13- Simmons A/ 20- Harris C/ 23- Carouthers C/	02:13	0-0	0	0.0000	1	1	2	0	0.0000
0- Green-White A/ 5- Akridge S/ 15- Gray A/ 24- Dunn W/ 30- Hall A/	01:57	2-2	0	1.0256	2	0	1	0	0.6667
5- Akridge S/ 12- Jackson K/ 15- Gray A/ 21- Ward S/ 23- Carouthers C/	01:44	2-2	0	1.1538	1	0	2	0	0.6944
4- Sanders D/ 5- Akridge S/ 20- Harris C/ 23- Carouthers C/ 24- Dunn W/	01:43	0-6	-6	0.0000	0	0	1	0	0.0000
0- Green-White A/ 2- Tillis R/ 5- Akridge S/ 12- Jackson K/ 15- Gray A/	01:29	2-3	-1	1.3483	3	1	0	0	1.0638
4- Sanders D/ 7- Hicks S/ 12- Jackson K/ 15- Gray A/ 20- Harris C/	01:25	0-3	-3	0.0000	1	0	0	0	0.0000
4- Sanders D/ 12- Jackson K/ 15- Gray A/ 20- Harris C/ 30- Hall A/	01:21	2-0	2	1.4815	3	0	0	1	1.0000
4- Sanders D/ 12- Jackson K/ 23- Carouthers C/ 24- Dunn W/ 30- Hall A/	01:19	3-3	0	2.2785	0	1	0	1	1.5957
4- Sanders D/ 12- Jackson K/ 21- Ward S/ 24- Dunn W/ 30- Hall A/	01:13	3-0	3	2.4658	2	0	1	1	1.5000
5- Akridge S/ 12- Jackson K/ 20- Harris C/ 23- Carouthers C/ 24- Dunn W/	01:11	2-3	-1	1.6901	1	1	1	1	0.6667
4- Sanders D/ 12- Jackson K/ 13- Simmons A/ 21- Ward S/ 30- Hall A/	01:08	0-2	-2	0.0000	1	0	1	0	0.0000
0- Green-White A/ 5- Akridge S/ 12- Jackson K/ 20- Harris C/ 23- Carouthers C/	00:58	4-0	4	4.1379	1	1	0	0	1.4493
0- Green-White A/ 2- Tillis R/ 4- Sanders D/ 5- Akridge S/ 24- Dunn W/	00:55	0-4	-4	0.0000	1	0	2	0	0.0000
5- Akridge S/ 12- Jackson K/ 15- Gray A/ 23- Carouthers C/ 30- Hall A/	00:53	0-7	-7	0.0000	0	0	2	0	0.0000
5- Akridge S/ 7- Hicks S/ 12- Jackson K/ 24- Dunn W/ 30- Hall A/	00:47	0-2	-2	0.0000	0	0	0	0	0.0000
5- Akridge S/ 13- Simmons A/ 15- Gray A/ 21- Ward S/ 30- Hall A/	00:42	0-0	0	0.0000	1	0	1	0	0.0000
4- Sanders D/ 13- Simmons A/ 20- Harris C/ 24- Dunn W/ 30- Hall A/	00:39	0-0	0	0.0000	0	0	0	0	0.0000
4- Sanders D/ 13- Simmons A/ 20- Harris C/ 23- Carouthers C/ 24- Dunn W/	00:37	0-3	-3	0.0000	1	0	2	0	0.0000
0- Green-White A/ 4- Sanders D/ 5- Akridge S/ 20- Harris C/ 24- Dunn W/	00:34	3-2	1	5.2941	0	0	0	0	1.5957
4- Sanders D/ 13- Simmons A/ 15- Gray A/ 20- Harris C/ 30- Hall A/	00:32	0-3	-3	0.0000	1	0	1	0	0.0000
5- Akridge S/ 13- Simmons A/ 20- Harris C/ 21- Ward S/ 24- Dunn W/	00:19	0-2	-2	0.0000	1	0	1	0	0.0000
4- Sanders D/ 13- Simmons A/ 21- Ward S/ 23- Carouthers C/ 24- Dunn W/	00:18	0-5	-5	0.0000	0	0	0	0	0.0000
2- Tillis R/ 5- Akridge S/ 13- Simmons A/ 20- Harris C/ 24- Dunn W/	00:12	0-0	0	0.0000	1	0	1	0	0.0000
2- Tillis R/ 5- Akridge S/ 13- Simmons A/ 20- Harris C/ 23- Carouthers C/	00:04	0-0	0	0.0000	1	0	0	0	0.0000
0- Green-White A/ 5- Akridge S/ 12- Jackson K/ 15- Gray A/ 20- Harris C/	00:04	0-0	0	0.0000	0	0	0	0	0.0000
5- Akridge S/ 15- Gray A/ 20- Harris C/ 23- Carouthers C/ 24- Dunn W/	00:01	0-1	-1	0.0000	0	0	0	0	0.0000
4- Sanders D/ 5- Akridge S/ 15- Gray A/ 20- Harris C/ 30- Hall A/	00:01	0-0	0	0.0000	1	0	0	0	0.0000
4- Sanders D/ 7- Hicks S/ 12- Jackson K/ 20- Harris C/ 24- Dunn W/	00:00	0-0	0	NaN	0	0	0	0	0.0000



Alabama St. at Vanderbilt

11/20/23 Memorial Gymnasium, Nashville
2023-24 Women's Basketball

Game Time: 1:00 PM

Game Duration: 1:58

Attendance: 1,612

Officials: Gina Cross, Eric Koch, Teresa Stuck

Vanderbilt

Lineup	Time	Score	Score Diff	Pts/Min	Reb	Stl	Tov	Ass	PPP
3- Cambridge J/ 11- Oliver J/ 13- Pissott J/ 23- Moore I/ 35- Washington S/	08:44	18-10	8	2.0611	7	6	5	5	0.9595
3- Cambridge J/ 12- Pierre K/ 23- Moore I/ 24- Makurat A/ 35- Washington S/	04:42	16-3	13	3.3934	2	3	0	6	1.7167
3- Cambridge J/ 4- Greene M/ 12- Pierre K/ 24- Makurat A/ 35- Washington S/	03:26	8-3	5	2.3301	3	2	0	1	1.6393
3- Cambridge J/ 12- Pierre K/ 13- Pissott J/ 23- Moore I/ 35- Washington S/	03:10	16-1	15	5.0526	3	0	0	4	2.0305
4- Greene M/ 11- Oliver J/ 13- Pissott J/ 23- Moore I/ 35- Washington S/	03:05	9-2	7	2.9173	1	3	2	3	1.3975
2- Brown J/ 3- Cambridge J/ 5- Allen R/ 12- Pierre K/ 24- Makurat A/	01:57	2-2	0	1.0256	1	0	0	1	1.0000
2- Brown J/ 5- Allen R/ 14- Mitchell A/ 21- LaChance B/ 24- Makurat A/	01:56	3-6	-3	1.5517	1	0	2	1	1.0000
2- Brown J/ 3- Cambridge J/ 5- Allen R/ 13- Pissott J/ 14- Mitchell A/	01:50	2-0	2	1.0909	1	1	0	0	0.6944
2- Brown J/ 5- Allen R/ 11- Oliver J/ 21- LaChance B/ 24- Makurat A/	01:36	3-0	3	1.8750	3	0	2	0	0.8721
4- Greene M/ 11- Oliver J/ 12- Pierre K/ 23- Moore I/ 24- Makurat A/	01:20	3-3	0	2.2500	1	0	1	1	1.5000
3- Cambridge J/ 4- Greene M/ 11- Oliver J/ 14- Mitchell A/ 24- Makurat A/	01:16	0-2	-2	0.0000	0	0	1	0	0.0000
3- Cambridge J/ 4- Greene M/ 11- Oliver J/ 13- Pissott J/ 35- Washington S/	01:06	2-0	2	1.8182	1	0	0	1	2.0000
2- Brown J/ 5- Allen R/ 13- Pissott J/ 14- Mitchell A/ 21- LaChance B/	01:00	0-3	-3	0.0000	1	0	1	0	0.0000
4- Greene M/ 11- Oliver J/ 23- Moore I/ 24- Makurat A/ 35- Washington S/	00:56	2-2	0	2.1429	0	0	1	0	0.6667
4- Greene M/ 5- Allen R/ 11- Oliver J/ 21- LaChance B/ 24- Makurat A/	00:53	0-0	0	0.0000	2	0	0	0	0.0000
2- Brown J/ 11- Oliver J/ 14- Mitchell A/ 21- LaChance B/ 24- Makurat A/	00:47	2-0	2	2.5532	2	0	0	1	2.0000
3- Cambridge J/ 4- Greene M/ 11- Oliver J/ 12- Pierre K/ 24- Makurat A/	00:44	0-0	0	0.0000	2	0	0	0	0.0000
3- Cambridge J/ 4- Greene M/ 11- Oliver J/ 24- Makurat A/ 35- Washington S/	00:34	2-3	-1	3.5294	1	0	0	0	2.0000
4- Greene M/ 11- Oliver J/ 12- Pierre K/ 21- LaChance B/ 24- Makurat A/	00:19	0-2	-2	0.0000	0	0	1	0	0.0000
4- Greene M/ 12- Pierre K/ 23- Moore I/ 24- Makurat A/ 35- Washington S/	00:13	0-0	0	0.0000	0	0	0	0	0.0000
2- Brown J/ 4- Greene M/ 5- Allen R/ 13- Pissott J/ 35- Washington S/	00:12	0-0	0	0.0000	0	0	0	0	0.0000
3- Cambridge J/ 4- Greene M/ 12- Pierre K/ 13- Pissott J/ 35- Washington S/	00:12	0-0	0	0.0000	0	0	0	0	0.0000