



UNI at Vanderbilt

11/25/23 South Point Arena, Las Vegas
2023-24 Women's Basketball

Officials: Bryan Enterline, Missy Brooks, Tommi Paris

UNI - 64 Record: 1-4

NO.	Name	Min	FG			3P			FT			Rebounds			Fouls		TP	AS	TO	ST	Blocks		+/-
			M-A	M-A	M-A	OR	DR	TOT	PF	FD	BS	BA											
13	Shateah Wetering	F 30:08	2-6	1-4	1-1	3	5	8	2	3	6	2	2	2	0	0	0	0	0	0	0	-13	
42	Grace Boffeli	F 34:31	9-13	0-1	7-10	0	6	6	4	7	25	2	2	2	2	2	1	2	2	1	2	2	
0	Maya McDermott	G 31:19	4-11	0-4	2-2	0	5	5	2	2	10	4	2	2	0	1	5					5	
2	Cailyn Morgan	G 19:44	0-4	0-4	0-0	0	3	3	2	1	0	0	2	0	0	0	-7						
4	Emerson Green	G 26:02	0-4	0-2	0-0	0	3	3	1	0	0	4	3	0	0	1	-9						
22	Taryn Wharton	08:39	0-2	0-1	0-0	0	0	0	0	1	0	0	2	0	0	1	-9						
24	Kayba Laube	23:17	6-10	6-10	3-3	0	0	0	3	2	21	0	2	1	0	5							
33	Katy Reyerson	01:49	0-0	0-0	0-0	0	0	0	0	0	0	0	0	0	0	-1							
32	Rachael Heittola	12:09	0-2	0-2	0-0	1	1	2	1	0	0	0	0	0	0	4							
14	Riley Wright	12:22	1-1	0-0	0-0	0	3	3	0	3	2	1	0	0	0	3							
Team						2	2	4			0		2										
Totals			22-53	7-28	13-16	6	28	34	15	19	64	13	17	5	2	4	-4						

Technical Fouls::NONE

Shooting By Period		
1st FG%	4-15	26.7%
3PT%	1-9	11.1%
FT%	3-3	100%
2nd FG%	4-8	50.0%
3PT%	1-5	20.0%
FT%	2-3	66.7%
3rd FG%	7-14	50.0%
3PT%	3-7	42.9%
FT%	2-2	100%
4th FG%	7-16	43.8%
3PT%	2-7	28.6%
FT%	6-8	75%
GM FG%	22-53	41.5%
3PT%	7-28	25.0%
FT%	13-16	81.3%

Dead Ball Rebounds: 1, 0

Vanderbilt - 68 Record: 7-0

NO.	Name	Min	FG			3P			FT			Rebounds			Fouls		TP	AS	TO	ST	Blocks		+/-
			M-A	M-A	M-A	OR	DR	TOT	PF	FD	BS	BA											
35	Sacha Washington	F 20:03	2-9	0-0	0-0	0	3	3	4	1	4	2	3	0	1	0	7						
3	Jordyn Cambridge	G 39:30	11-18	5-8	1-2	2	4	6	4	5	28	3	2	7	1	0	4						
11	Jordyn Oliver	G 30:00	3-5	1-1	1-2	3	8	11	2	1	8	6	1	0	0	-11							
13	Justine Pissott	G 24:42	3-9	1-3	1-2	3	3	6	0	1	8	1	0	1	0	11							
23	Iyana Moore	G 30:48	2-6	0-2	1-5	1	3	4	3	4	5	0	1	1	0	-5							
24	Aga Makurat	14:58	1-3	0-0	0-0	1	2	3	2	0	2	1	1	0	1	-2							
12	Khamil Pierre	19:50	4-8	0-0	0-0	1	1	2	2	1	8	0	1	3	1	5							
4	Madison Greene	19:21	2-6	0-3	1-2	1	1	2	3	2	5	2	1	0	1	8							
21	Bella LaChance	00:45	0-0	0-0	0-0	0	0	0	0	0	0	0	0	0	0	2							
5	Ryanne Allen	00:03	0-0	0-0	0-0	0	0	0	0	0	0	0	0	0	0	1							
Team						0	2	2			0		0										
Totals			28-64	7-17	5-13	12	27	39	20	15	68	15	10	12	4	2	4						

Technical Fouls:Moore 3rd0:49

Shooting By Period		
1st FG%	8-16	50.0%
3PT%	1-3	33.3%
FT%	0-1	0%
2nd FG%	9-18	50.0%
3PT%	3-5	60.0%
FT%	0-0	0%
3rd FG%	7-19	36.8%
3PT%	2-5	40.0%
FT%	1-2	50%
4th FG%	4-11	36.4%
3PT%	1-4	25.0%
FT%	4-10	40%
GM FG%	28-64	43.8%
3PT%	7-17	41.2%
FT%	5-13	38.5%

Dead Ball Rebounds: 4, 0

	UNI	VANDY
Biggest lead	2 (1 st 9:30)	18 (3 rd 6:16)
Best Scoring Run	11(4 th 5:21)	14(2 nd 4:58)
Lead Changes	3	
Times Tied	3	
Time with Lead	01:53	35:35

Points from	UNI	VANDY
Turnovers	12	19
Paint	26	34
Second Chance	10	11
Fast Breaks	3	11
Bench	23	15

	Period by Period Scoring				
	1st	2nd	3rd	4th	TOT
UNI	12	11	19	22	64
VANDY	17	21	17	13	68



UNI at Vanderbilt

11/25/23 South Point Arena, Las Vegas
2023-24 Women's Basketball

Officials: Bryan Enterline, Missy Brooks, Tommi Paris

Period 1

Quarter Starters:

UNI	0 McDermott M	2 Morgan C	4 Green E	13 Wetering S	42 Boffeli G
VANDY	3 Cambridge J	11 Oliver J	13 Pissott J	23 Moore I	35 Washington S

Game Time	UNI	Score	Diff	VANDY
10:00	13 WETERING S jumpball lost			35 WASHINGTON S jumpball won
09:43				35 WASHINGTON S 2pt FG in the paint, jump shot missed
09:40	4 GREEN E defensive rebound (1)			
09:30	42 BOFFELI G 2pt FG in the paint, layup made (2)	2-0	2	
09:30	4 GREEN E assist (1)			
09:08				13 PISSOTT J 2pt FG in the paint, driving layup missed
09:05	42 BOFFELI G defensive rebound (1)			
08:50	13 WETERING S 3pt FG , jump shot missed			
08:47				11 OLIVER J defensive rebound (1)
08:35		2-2	0	11 OLIVER J 2pt FG in the paint, layup made (2)
08:35				35 WASHINGTON S assist (1)
08:16	0 MCDERMOTT M 2pt FG in the paint, driving layup made (2)	4-2	2	
08:00		4-4	0	35 WASHINGTON S 2pt FG outside the paint, jump shot made (2)
08:00				11 OLIVER J assist (1)
07:28	0 MCDERMOTT M 3pt FG , jump shot missed			
07:25				11 OLIVER J defensive rebound (2)
07:20				23 MOORE I 3pt FG , jump shot missed
07:16	2 MORGAN C defensive rebound (1)			
07:09	42 BOFFELI G foul drawn (1)			3 CAMBRIDGE J foul shooting (1 - 1)
07:09	42 BOFFELI G free throw 1 - 2 made (3)	5-4	1	
07:09	42 BOFFELI G free throw 2 - 2 made (4)	6-4	2	
06:55	0 MCDERMOTT M foul personal (1 - 1)			3 CAMBRIDGE J foul drawn (1)
06:48				35 WASHINGTON S 2pt FG in the paint, hook shot missed
06:44				11 OLIVER J offensive rebound (3)
06:42		6-6	0	13 PISSOTT J 2pt FG second chance in the paint, pull up jump shot made (2)
06:42				35 WASHINGTON S assist (2)
06:27	2 MORGAN C 3pt FG , jump shot missed			
06:24				23 MOORE I defensive rebound (1)
06:04				35 WASHINGTON S 2pt FG outside the paint, jump shot missed
06:00	0 MCDERMOTT M defensive rebound (1)			
05:53	0 MCDERMOTT M turnover lost ball (1)			23 MOORE I steal (1)
05:50		6-8	-2	3 CAMBRIDGE J 2pt FG fast break from turnover in the paint, driving layup made (2)
05:50	42 BOFFELI G foul shooting (1 - 2)			3 CAMBRIDGE J foul drawn (2)
05:50				3 CAMBRIDGE J free throw fast break 1 - 1 missed
05:48	42 BOFFELI G defensive rebound (2)			
05:33	2 MORGAN C 3pt FG , jump shot missed			
05:29				11 OLIVER J defensive rebound (4)
05:25				13 PISSOTT J 3pt FG , jump shot missed
05:22	4 GREEN E defensive rebound (2)			
05:06	0 MCDERMOTT M 3pt FG , jump shot missed			
04:59	13 WETERING S offensive rebound (1)			



UNI at Vanderbilt

11/25/23 South Point Arena, Las Vegas
2023-24 Women's Basketball

Officials: Bryan Enterline, Missy Brooks, Tommi Paris

Game Time	UNI	Score	Diff	VANDY
04:56	13 WETERING S foul drawn (1)			35 WASHINGTON S foul personal (1 - 2)
04:56	Timeout media			
04:56	0 MCDERMOTT M substitution out			
04:56	2 MORGAN C substitution out			
04:56	13 WETERING S substitution out			
04:56	22 WHARTON T substitution in			
04:56	24 LAUBE K substitution in			
04:56	33 REYERSON K substitution in			
04:56				13 PISSOTT J substitution out
04:56				24 MAKURAT A substitution in
04:38	24 LAUBE K 3pt FG second chance, jump shot made (3)	9-8	1	
04:38	4 GREEN E assist (2)			
04:23		9-10	-1	3 CAMBRIDGE J 2pt FG outside the paint, jump shot made (4)
04:04	42 BOFFELI G 3pt FG , jump shot missed			
04:00				23 MOORE I defensive rebound (2)
03:53	42 BOFFELI G steal (1)			35 WASHINGTON S turnover lost ball (1)
03:36	42 BOFFELI G 2pt FG from turnover outside the paint, jump shot missed			
03:33				11 OLIVER J defensive rebound (5)
03:24		9-12	-3	3 CAMBRIDGE J 2pt FG in the paint, driving layup made (6)
03:07	42 BOFFELI G foul offensive (2 - 3)			23 MOORE I foul drawn (1)
03:07	42 BOFFELI G turnover offensive (1)			
03:07	33 REYERSON K substitution out			
03:07	42 BOFFELI G substitution out			
03:07	13 WETERING S substitution in			
03:07	32 HEITTOLA R substitution in			
03:07				35 WASHINGTON S substitution out
03:07				12 PIERRE K substitution in
02:49				23 MOORE I 2pt FG from turnover in the paint, floating jump shot missed
02:46	13 WETERING S defensive rebound (2)			
02:35	22 WHARTON T turnover bad pass (1)			3 CAMBRIDGE J steal (1)
02:06		9-14	-5	24 MAKURAT A 2pt FG from turnover in the paint, floating jump shot made (2)
01:49	24 LAUBE K 3pt FG , jump shot missed			
01:45	32 HEITTOLA R offensive rebound (1)			
01:39	22 WHARTON T foul drawn (1)			12 PIERRE K foul shooting (1 - 3)
01:39	22 WHARTON T substitution out			
01:39	24 LAUBE K substitution out			
01:39	0 MCDERMOTT M substitution in			
01:39	2 MORGAN C substitution in			
01:38	13 WETERING S 2pt FG second chance in the paint, layup made (2)	11-14	-3	
01:38	13 WETERING S foul drawn (2)			23 MOORE I foul shooting (1 - 4)
01:38				23 MOORE I substitution out
01:38				13 PISSOTT J substitution in
01:38	13 WETERING S free throw 1 - 1 made (3)	12-14	-2	
01:38				11 OLIVER J substitution out
01:38				4 GREENE M substitution in
01:38	4 GREEN E substitution out			



UNI at Vanderbilt

11/25/23 South Point Arena, Las Vegas
2023-24 Women's Basketball

Officials: Bryan Enterline, Missy Brooks, Tommi Paris

Game Time	UNI	Score	Diff	VANDY
01:38	24 LAUBE K substitution in			
01:25				3 CAMBRIDGE J 2pt FG outside the paint, jump shot missed
01:18	0 MCDERMOTT M defensive rebound (2)			
01:09	13 WETERING S 2pt FG in the paint, driving layup missed			
01:07				13 PISSOTT J defensive rebound (1)
01:02		12-17	-5	3 CAMBRIDGE J 3pt FG , jump shot made (9)
01:02				4 GREENE M assist (1)
00:44	32 HEITTOLA R 3pt FG , jump shot missed			
00:36	13 WETERING S offensive rebound (3)			
00:33	0 MCDERMOTT M 2pt FG second chance in the paint, driving layup missed			
00:30				3 CAMBRIDGE J defensive rebound (1)
00:28				3 CAMBRIDGE J turnover bad pass (1)
00:01	24 LAUBE K turnover lost ball (1)			3 CAMBRIDGE J steal (2)
END OF PERIOD				
UNI 12-17 VANDY				



UNI at Vanderbilt

11/25/23 South Point Arena, Las Vegas
2023-24 Women's Basketball

Officials: Bryan Enterline, Missy Brooks, Tommi Paris

UNI - 12

NO.	Name	Min	FG			Rebounds			Fouls		TP	AS	TO	ST	Blocks		+/-
			M-A	3P	FT	OR	DR	TOT	PF	FD					BS	BA	
13	Shateah Wetering	F 08:11	1-3	0-1	1-1	2	1	3	0	2	3	0	0	0	0	0	-4
42	Grace Boffeli	F 06:53	1-3	0-1	2-2	0	2	2	2	1	4	0	1	1	0	0	-3
0	Maya McDermott	G 06:43	1-4	0-2	0-0	0	2	2	1	0	2	0	1	0	0	0	-2
2	Cailyn Morgan	G 06:43	0-2	0-2	0-0	0	1	1	0	0	0	0	0	0	0	0	-2
4	Emerson Green	G 08:22	0-0	0-0	0-0	0	2	2	0	0	0	2	0	0	0	0	-2
22	Taryn Wharton	03:17	0-0	0-0	0-0	0	0	0	0	1	0	0	1	0	0	0	-3
24	Kayba Laube	04:55	1-2	1-2	0-0	0	0	0	0	0	3	0	1	0	0	0	-6
33	Katy Reyerson	01:49	0-0	0-0	0-0	0	0	0	0	0	0	0	0	0	0	0	-1
32	Rachael Heittola	03:07	0-1	0-1	0-0	1	0	1	0	0	0	0	0	0	0	0	-2
Team						0	0	0			0						
Totals			4-15	1-9	3-3	3	8	11	3	4	12	2	4	1	0	0	-5

Shooting By Period		
1st FG%	4-15	26.7%
3PT%	1-9	11.1%
FT%	3-3	100%
GM FG%	4-15	26.7%
3PT%	1-9	11.1%
FT%	3-3	100.0%

Dead Ball Rebounds: 0, 0

Technical Fouls::NONE

Vanderbilt - 17

NO.	Name	Min	FG			Rebounds			Fouls		TP	AS	TO	ST	Blocks		+/-
			M-A	3P	FT	OR	DR	TOT	PF	FD					BS	BA	
35	Sacha Washington	F 06:53	1-4	0-0	0-0	0	0	0	1	0	2	2	1	0	0	0	3
3	Jordyn Cambridge	G 10:00	4-5	1-1	0-1	0	1	1	1	2	9	0	1	2	0	0	5
11	Jordyn Oliver	G 08:22	1-1	0-0	0-0	1	4	5	0	0	2	1	0	0	0	0	2
13	Justine Pissott	G 06:42	1-3	0-1	0-0	0	1	1	0	0	2	0	0	0	0	0	4
23	Iyana Moore	G 08:22	0-2	0-1	0-0	0	2	2	1	1	0	0	0	1	0	0	3
24	Aga Makurat	04:56	1-1	0-0	0-0	0	0	0	0	0	2	0	0	0	0	0	3
12	Khamil Pierre	03:07	0-0	0-0	0-0	0	0	0	1	0	0	0	0	0	0	0	2
4	Madison Greene	01:38	0-0	0-0	0-0	0	0	0	0	0	0	1	0	0	0	0	3
Team						0	0	0			0						
Totals			8-16	1-3	0-1	1	8	9	4	3	17	4	2	3	0	0	5

Shooting By Period		
1st FG%	8-16	50.0%
3PT%	1-3	33.3%
FT%	0-1	0%
GM FG%	8-16	50.0%
3PT%	1-3	33.3%
FT%	0-1	0.0%

Dead Ball Rebounds: 0, 0

Technical Fouls::NONE

	UNI	VANDY
Biggest lead	2 (1 st 9:30)	5 (1 st 2:06)
Best Scoring Run	3 (1 st 4:38)	6 (1 st 2:06)
Lead Changes	3	
Times Tied	3	
Time with Lead	01:53	05:35

Points from	UNI	VANDY
Turnovers	0	4
Paint	6	10
Second Chance	6	2
Fast Breaks	0	2
Bench	3	2

	Period by Period Scoring				
	1st	2nd	3rd	4th	TOT
UNI	12	11	19	22	64
VANDY	17	21	17	13	68



UNI at Vanderbilt

11/25/23 South Point Arena, Las Vegas
2023-24 Women's Basketball

Officials: Bryan Enterline, Missy Brooks, Tommi Paris

Period 2

Quarter Starters:

UNI	0 McDermott M	4 Green E	13 Wetering S	14 Wright R	32 Heittola R
VANDY	3 Cambridge J	4 Greene M	12 Pierre K	13 Pissott J	24 Makurat A

Game Time	UNI	Score	Diff	VANDY
10:00	2 MORGAN C substitution out			
10:00	24 LAUBE K substitution out			
10:00	4 GREEN E substitution in			
10:00	14 WRIGHT R substitution in			
09:28	turnover shot clock (5)			
09:19		12-19	-7	12 PIERRE K 2pt FG from turnover in the paint, driving layup made (2)
08:47	13 WETERING S turnover lost ball (1)			12 PIERRE K steal (1)
08:46	13 WETERING S foul personal (1 - 1)			12 PIERRE K foul drawn (1)
08:46	32 HEITTOLA R substitution out			
08:46	42 BOFFELI G substitution in			
08:36		12-22	-10	3 CAMBRIDGE J 3pt FG from turnover, jump shot made (12)
08:36				24 MAKURAT A assist (1)
08:26	0 MCDERMOTT M turnover lost ball (2)			3 CAMBRIDGE J steal (3)
08:19				4 GREENE M 2pt FG from turnover in the paint, layup blocked
08:19	42 BOFFELI G block (1)			
08:18	42 BOFFELI G defensive rebound (3)			
08:18	42 BOFFELI G foul drawn (2)			4 GREENE M foul personal (1 - 1)
08:18	0 MCDERMOTT M substitution out			
08:18	14 WRIGHT R substitution out			
08:18	2 MORGAN C substitution in			
08:18	22 WHARTON T substitution in			
07:48	13 WETERING S 3pt FG , jump shot missed			
07:45				24 MAKURAT A defensive rebound (1)
07:45	jump ball situation			
07:45				24 MAKURAT A substitution out
07:45				23 MOORE I substitution in
07:34				3 CAMBRIDGE J 2pt FG in the paint, pull up jump shot missed
07:30	2 MORGAN C defensive rebound (2)			
07:14	4 GREEN E 3pt FG , jump shot missed			
07:08				3 CAMBRIDGE J defensive rebound (2)
06:47				12 PIERRE K turnover bad pass (1)
06:47				12 PIERRE K substitution out
06:47				35 WASHINGTON S substitution in
06:37	2 MORGAN C turnover lost ball (1)			3 CAMBRIDGE J steal (4)
06:32		12-24	-12	3 CAMBRIDGE J 2pt FG fast break from turnover in the paint, driving layup made (14)
06:32				4 GREENE M assist (2)
06:13	4 GREEN E turnover bad pass (1)			3 CAMBRIDGE J steal (5)
06:08				35 WASHINGTON S 2pt FG from turnover in the paint, layup missed
06:05	13 WETERING S defensive rebound (4)			
05:53	13 WETERING S turnover lost ball (2)			13 PISSOTT J steal (1)



UNI at Vanderbilt

11/25/23 South Point Arena, Las Vegas
2023-24 Women's Basketball

Officials: Bryan Enterline, Missy Brooks, Tommi Paris

Game Time	UNI	Score	Diff	VANDY
05:49		12-26	-14	35 WASHINGTON S 2pt FG from turnover in the paint, layup made (4)
05:49				13 PISSOTT J assist (1)
05:49	4 GREEN E turnover lost ball (2)			
05:49	4 GREEN E substitution out			
05:49	22 WHARTON T substitution out			
05:49	0 MCDERMOTT M substitution in			
05:49	24 LAUBE K substitution in			
05:49				3 CAMBRIDGE J substitution out
05:49				13 PISSOTT J substitution out
05:49				11 OLIVER J substitution in
05:49				24 MAKURAT A substitution in
05:37				24 MAKURAT A 2pt FG from turnover in the paint, layup blocked
05:37	42 BOFFELI G block (2)			
05:35				24 MAKURAT A offensive rebound (2)
05:35				24 MAKURAT A 2pt FG from turnover second chance in the paint, layup missed
05:35	defensive rebound (15)			
05:19	0 MCDERMOTT M foul drawn (1)			23 MOORE I foul personal (2 - 2)
05:19				23 MOORE I substitution out
05:19				3 CAMBRIDGE J substitution in
05:04	24 LAUBE K turnover lost ball (2)			3 CAMBRIDGE J steal (6)
04:58		12-28	-16	4 GREENE M 2pt FG fast break from turnover in the paint, driving layup made (2)
04:58				3 CAMBRIDGE J assist (1)
04:41	2 MORGAN C 3pt FG , jump shot missed			
04:38				3 CAMBRIDGE J defensive rebound (3)
04:24	2 MORGAN C foul drawn (1)			35 WASHINGTON S foul offensive (2 - 3)
04:24				35 WASHINGTON S turnover offensive (2)
04:24	Timeout media			
04:24	24 LAUBE K substitution out			
04:24	14 WRIGHT R substitution in			
04:24				35 WASHINGTON S substitution out
04:24				12 PIERRE K substitution in
04:02	42 BOFFELI G 2pt FG from turnover in the paint, layup made (6)	14-28	-14	
04:02	13 WETERING S assist (1)			
03:48		14-31	-17	3 CAMBRIDGE J 3pt FG , jump shot made (17)
03:48				11 OLIVER J assist (2)
03:31	14 WRIGHT R 2pt FG in the paint, layup made (2)	16-31	-15	
03:12				4 GREENE M 3pt FG , jump shot missed
03:08	0 MCDERMOTT M defensive rebound (3)			
02:55	14 WRIGHT R foul drawn (1)			24 MAKURAT A foul personal (1 - 4)
02:55				12 PIERRE K substitution out
02:55				13 PISSOTT J substitution in
02:51	0 MCDERMOTT M foul drawn (2)			24 MAKURAT A foul shooting (2 - 5)
02:51	0 MCDERMOTT M free throw 1 - 2 made (3)	17-31	-14	
02:51	0 MCDERMOTT M free throw 2 - 2 made (4)	18-31	-13	
02:43				24 MAKURAT A substitution out
02:43				12 PIERRE K substitution in
02:40		18-33	-15	12 PIERRE K 2pt FG in the paint, jump shot made (4)



UNI at Vanderbilt

11/25/23 South Point Arena, Las Vegas
2023-24 Women's Basketball

Officials: Bryan Enterline, Missy Brooks, Tommi Paris

Game Time	UNI	Score	Diff	VANDY
02:07	turnover shot clock (13)			
01:58				13 PISSOTT J 2pt FG from turnover outside the paint, pull up jump shot missed
01:55	0 MCDERMOTT M defensive rebound (4)			
01:38	13 WETERING S 3pt FG , jump shot made (6)	21-33	-12	
01:38	0 MCDERMOTT M assist (1)			
01:09				13 PISSOTT J 2pt FG in the paint, layup missed
01:06				13 PISSOTT J offensive rebound (2)
01:04				4 GREENE M 3pt FG second chance, jump shot missed
00:59				11 OLIVER J offensive rebound (6)
00:56		21-36	-15	11 OLIVER J 3pt FG second chance, jump shot made (5)
00:45	42 BOFFELI G 2pt FG in the paint, driving layup made (8)	23-36	-13	
00:45	0 MCDERMOTT M assist (2)			
00:45	42 BOFFELI G foul drawn (3)			4 GREENE M foul shooting (2 - 6)
00:45				4 GREENE M substitution out
00:45				21 LACHANCE B substitution in
00:45	0 MCDERMOTT M substitution out			
00:45	22 WHARTON T substitution in			
00:45	42 BOFFELI G free throw 1 - 1 missed			
00:42				12 PIERRE K defensive rebound (1)
00:31		23-38	-15	12 PIERRE K 2pt FG outside the paint, turnaround jump shot made (6)
00:31				11 OLIVER J assist (3)
00:05	22 WHARTON T 3pt FG , jump shot missed			
00:02				defensive rebound (17)
00:02	42 BOFFELI G substitution out			
00:02	32 HEITTOLA R substitution in			
END OF PERIOD				
UNI 23-38 VANDY				



UNI at Vanderbilt

11/25/23 South Point Arena, Las Vegas
2023-24 Women's Basketball

Officials: Bryan Enterline, Missy Brooks, Tommi Paris

UNI - 11

NO.	Name	Min	FG			Rebounds			Fouls		TP	AS	TO	ST	Blocks		+/-
			M-A	M-A	M-A	OR	DR	TOT	PF	FD					BS	BA	
13	Shateah Wetering	F 10:00	1-2	1-2	0-0	0	1	1	1	0	3	1	2	0	0	0	-10
42	Grace Boffeli	F 08:43	2-2	0-0	0-1	0	1	1	0	2	4	0	0	0	2	0	-8
0	Maya McDermott	G 06:46	0-0	0-0	2-2	0	2	2	0	2	2	1	0	0	0	0	-4
2	Cailyn Morgan	G 08:18	0-1	0-1	0-0	0	1	1	0	1	0	0	1	0	0	0	-5
4	Emerson Green	G 04:11	0-1	0-1	0-0	0	0	0	0	0	0	0	2	0	0	0	-9
14	Riley Wright	06:06	1-1	0-0	0-0	0	0	0	0	1	2	0	0	0	0	0	-4
22	Taryn Wharton	03:14	0-1	0-1	0-0	0	0	0	0	0	0	0	0	0	0	0	-6
24	Kayba Laube	01:25	0-0	0-0	0-0	0	0	0	0	0	0	0	1	0	0	0	-2
32	Rachael Heittola	01:17	0-0	0-0	0-0	0	0	0	0	0	0	0	0	0	0	0	-2
Team						0	1	1		0		2					
Totals			4-8	1-5	2-3	0	6	6	1	6	11	3	9	0	2	0	-10

Shooting By Period		
2 nd FG%	4-8	50.0%
3PT%	1-5	20.0%
FT%	2-3	66.7%
GM FG%	4-8	50.0%
3PT%	1-5	20.0%
FT%	2-3	66.7%

Dead Ball Rebounds: 0, 0

Technical Fouls::NONE

Vanderbilt - 21

NO.	Name	Min	FG			Rebounds			Fouls		TP	AS	TO	ST	Blocks		+/-
			M-A	M-A	M-A	OR	DR	TOT	PF	FD					BS	BA	
35	Sacha Washington	F 02:23	1-2	0-0	0-0	0	0	0	1	0	2	0	1	0	0	0	6
3	Jordyn Cambridge	G 09:30	3-4	2-2	0-0	0	2	2	0	0	8	1	0	4	0	0	10
11	Jordyn Oliver	G 05:49	1-1	1-1	0-0	1	0	1	0	0	3	2	0	0	0	0	1
13	Justine Pissott	G 07:06	0-2	0-0	0-0	1	0	1	0	0	0	1	0	1	0	0	9
23	Iyana Moore	G 02:26	0-0	0-0	0-0	0	0	0	1	0	0	0	0	0	0	0	4
4	Madison Greene	09:15	1-4	0-2	0-0	0	0	0	2	0	2	1	0	0	0	1	8
24	Aga Makurat	05:21	0-2	0-0	0-0	1	1	2	2	0	0	1	0	0	0	1	4
12	Khamil Pierre	07:25	3-3	0-0	0-0	0	1	1	0	1	6	0	1	1	0	0	6
21	Bella LaChance	00:45	0-0	0-0	0-0	0	0	0	0	0	0	0	0	0	0	0	2
Team						0	1	1		0		0					
Totals			9-18	3-5	0-0	3	5	8	6	1	21	6	2	6	0	2	10

Shooting By Period		
2 nd FG%	9-18	50.0%
3PT%	3-5	60.0%
FT%	0-0	0%
GM FG%	9-18	50.0%
3PT%	3-5	60.0%
FT%	0-0	0.0%

Dead Ball Rebounds: 0, 0

Technical Fouls::NONE

	UNI	VANDY
Biggest lead	0 (1 st 10:00)	17 (2 nd 3:48)
Best Scoring Run	4(2 nd 2:51)	11(2 nd 4:58)
Lead Changes	0	
Times Tied	0	
Time with Lead	00:00	09:19

Points from	UNI	VANDY
Turnovers	2	11
Paint	6	10
Second Chance	0	3
Fast Breaks	0	4
Bench	2	8

	Period by Period Scoring				
	1st	2nd	3rd	4th	TOT
UNI	12	11	19	22	64
VANDY	17	21	17	13	68



UNI at Vanderbilt

11/25/23 South Point Arena, Las Vegas
2023-24 Women's Basketball

Officials: Bryan Enterline, Missy Brooks, Tommi Paris

UNI - 23

NO.	Name	F	Min	FG			Rebounds			Fouls		TP	AS	TO	ST	Blocks		+/-
				M-A	M-A	M-A	OR	DR	TOT	PF	FD					BS	BA	
13	Shateah Wetering	F	18:11	2-5	1-3	1-1	2	2	4	1	2	6	1	2	0	0	0	-14
42	Grace Boffeli	F	15:36	3-5	0-1	2-3	0	3	3	2	3	8	0	1	1	2	0	-11
0	Maya McDermott	G	13:29	1-4	0-2	2-2	0	4	4	1	2	4	2	2	0	0	0	-6
2	Cailyn Morgan	G	15:01	0-3	0-3	0-0	0	2	2	0	1	0	0	1	0	0	0	-7
4	Emerson Green	G	12:33	0-1	0-1	0-0	0	2	2	0	0	0	2	2	0	0	0	-11
22	Taryn Wharton		06:31	0-1	0-1	0-0	0	0	0	0	1	0	0	1	0	0	0	-9
24	Kayba Laube		06:20	1-2	1-2	0-0	0	0	0	0	0	3	0	2	0	0	0	-8
33	Katy Reyerson		01:49	0-0	0-0	0-0	0	0	0	0	0	0	0	0	0	0	0	-1
32	Rachael Heittola		04:24	0-1	0-1	0-0	1	0	1	0	0	0	0	0	0	0	0	-4
14	Riley Wright		06:06	1-1	0-0	0-0	0	0	0	0	1	2	0	0	0	0	0	-4
Team							0	1	1			0		2				
Totals				8-23	2-14	5-6	3	14	17	4	10	23	5	13	1	2	0	-15

Shooting By Period		
1 st FG%	4-15	26.7%
3PT%	1-9	11.1%
FT%	3-3	100%
2 nd FG%	4-8	50.0%
3PT%	1-5	20.0%
FT%	2-3	66.7%
GM FG%	8-23	34.8%
3PT%	2-14	14.3%
FT%	5-6	83.3%

Dead Ball Rebounds: 0, 0

Technical Fouls::NONE

Vanderbilt - 38

NO.	Name	F	Min	FG			Rebounds			Fouls		TP	AS	TO	ST	Blocks		+/-
				M-A	M-A	M-A	OR	DR	TOT	PF	FD					BS	BA	
35	Sacha Washington	F	09:16	2-6	0-0	0-0	0	0	0	2	0	4	2	2	0	0	0	9
3	Jordyn Cambridge	G	19:30	7-9	3-3	0-1	0	3	3	1	2	17	1	1	6	0	0	15
11	Jordyn Oliver	G	14:11	2-2	1-1	0-0	2	4	6	0	0	5	3	0	0	0	0	3
13	Justine Pissott	G	13:48	1-5	0-1	0-0	1	1	2	0	0	2	1	0	1	0	0	13
23	Iyana Moore	G	10:48	0-2	0-1	0-0	0	2	2	2	1	0	0	0	1	0	0	7
24	Aga Makurat		10:17	1-3	0-0	0-0	1	1	2	2	0	2	1	0	0	0	1	7
12	Khamil Pierre		10:32	3-3	0-0	0-0	0	1	1	1	1	6	0	1	1	0	0	8
4	Madison Greene		10:53	1-4	0-2	0-0	0	0	0	2	0	2	2	0	0	0	1	11
21	Bella LaChance		00:45	0-0	0-0	0-0	0	0	0	0	0	0	0	0	0	0	0	2
Team							0	1	1			0		0				
Totals				17-34	4-8	0-1	4	13	17	10	4	38	10	4	9	0	2	15

Shooting By Period		
1 st FG%	8-16	50.0%
3PT%	1-3	33.3%
FT%	0-1	0%
2 nd FG%	9-18	50.0%
3PT%	3-5	60.0%
FT%	0-0	0%
GM FG%	17-34	50.0%
3PT%	4-8	50.0%
FT%	0-1	0.0%

Dead Ball Rebounds: 0, 0

Technical Fouls::NONE

	UNI	VANDY
Biggest lead	2 (1 st 9:30)	17 (2 nd 3:48)
Best Scoring Run	4(2 nd 2:51)	14(2 nd 4:58)
Lead Changes	3	
Times Tied	3	
Time with Lead	01:53	15:35

Points from	UNI	VANDY
Turnovers	2	15
Paint	12	20
Second Chance	6	5
Fast Breaks	0	6
Bench	5	10

	Period by Period Scoring				
	1st	2nd	3rd	4th	TOT
UNI	12	11	19	22	64
VANDY	17	21	17	13	68



UNI at Vanderbilt

11/25/23 South Point Arena, Las Vegas
2023-24 Women's Basketball

Officials: Bryan Enterline, Missy Brooks, Tommi Paris

Period 3

Quarter Starters:

UNI	0 McDermott M	2 Morgan C	4 Green E	13 Wetering S	42 Boffeli G
VANDY	3 Cambridge J	11 Oliver J	13 Pissott J	23 Moore I	35 Washington S

Game Time	UNI	Score	Diff	VANDY
10:00	14 WRIGHT R substitution out			
10:00	22 WHARTON T substitution out			
10:00	32 HEITTOLA R substitution out			
10:00	0 MCDERMOTT M substitution in			
10:00	4 GREEN E substitution in			
10:00	42 BOFFELI G substitution in			
10:00				12 PIERRE K substitution out
10:00				21 LACHANCE B substitution out
10:00				23 MOORE I substitution in
10:00				35 WASHINGTON S substitution in
09:36	42 BOFFELI G 2pt FG in the paint, jump shot blocked			
09:36				35 WASHINGTON S block (1)
09:31				11 OLIVER J defensive rebound (7)
09:26				35 WASHINGTON S 2pt FG in the paint, layup missed
09:23	4 GREEN E defensive rebound (3)			
09:09	42 BOFFELI G 2pt FG in the paint, hook shot missed			
09:06				35 WASHINGTON S defensive rebound (1)
08:57				13 PISSOTT J 3pt FG , jump shot missed
08:53	13 WETERING S defensive rebound (5)			
08:36	2 MORGAN C 3pt FG , jump shot missed			
08:33				11 OLIVER J defensive rebound (8)
08:13				35 WASHINGTON S 2pt FG outside the paint, jump shot missed
08:09				13 PISSOTT J offensive rebound (3)
08:07				13 PISSOTT J 2pt FG second chance in the paint, jump shot missed
08:04	0 MCDERMOTT M defensive rebound (5)			
07:58	42 BOFFELI G turnover bad pass (2)			3 CAMBRIDGE J steal (7)
07:52		23-40	-17	13 PISSOTT J 2pt FG fast break from turnover in the paint, layup made (4)
07:27	4 GREEN E 3pt FG , jump shot missed			
07:24				13 PISSOTT J defensive rebound (4)
07:16				3 CAMBRIDGE J 2pt FG in the paint, floating jump shot missed
07:16	13 WETERING S defensive rebound (6)			
07:16	13 WETERING S foul drawn (3)			35 WASHINGTON S foul personal (3 - 1)
07:16				35 WASHINGTON S substitution out
07:16				12 PIERRE K substitution in
07:07	2 MORGAN C turnover bad pass (2)			12 PIERRE K steal (2)
06:59				23 MOORE I 3pt FG from turnover, jump shot missed
06:57	defensive rebound (22)			
06:57	2 MORGAN C substitution out			
06:57	24 LAUBE K substitution in			
06:57	42 BOFFELI G 2pt FG in the paint, layup made (10)	25-40	-15	
06:57	13 WETERING S assist (2)			
06:16		25-43	-18	3 CAMBRIDGE J 3pt FG , jump shot made (20)



UNI at Vanderbilt

11/25/23 South Point Arena, Las Vegas
2023-24 Women's Basketball

Officials: Bryan Enterline, Missy Brooks, Tommi Paris

Game Time	UNI	Score	Diff	VANDY
06:16				11 OLIVER J assist (4)
06:04	24 LAUBE K 3pt FG , jump shot made (6)	28-43	-15	
06:04	4 GREEN E assist (3)			
05:44		28-46	-18	13 PISSOTT J 3pt FG , jump shot made (7)
05:44				11 OLIVER J assist (5)
05:27	4 GREEN E turnover bad pass (3)			12 PIERRE K steal (3)
05:02	4 GREEN E substitution out			
05:02	14 WRIGHT R substitution in			
04:58				11 OLIVER J 2pt FG from turnover in the paint, turnaround jump shot missed
04:56	42 BOFFELI G defensive rebound (4)			
04:54	Timeout media			
04:54				13 PISSOTT J substitution out
04:54				24 MAKURAT A substitution in
04:42	42 BOFFELI G 2pt FG outside the paint, jump shot made (12)	30-46	-16	
04:24	jump ball situation			
04:11				23 MOORE I 2pt FG outside the paint, jump shot missed
04:06	13 WETERING S defensive rebound (7)			
04:00	24 LAUBE K 3pt FG , jump shot missed			
03:55				3 CAMBRIDGE J defensive rebound (4)
03:48				12 PIERRE K 2pt FG outside the paint, jump shot missed
03:42	14 WRIGHT R defensive rebound (1)			
03:22	42 BOFFELI G 2pt FG in the paint, pull up jump shot made (14)	32-46	-14	
03:00		32-48	-16	11 OLIVER J 2pt FG in the paint, layup made (7)
03:00				3 CAMBRIDGE J assist (2)
02:43	24 LAUBE K 3pt FG , step back jump shot made (9)	35-48	-13	
02:43	42 BOFFELI G assist (1)			
02:20		35-50	-15	23 MOORE I 2pt FG in the paint, driving layup made (2)
02:08	0 MCDERMOTT M 2pt FG in the paint, floating jump shot made (6)	37-50	-13	
02:08	Timeout 30 Sec			
02:08	Timeout media			
02:08	0 MCDERMOTT M substitution out			
02:08	42 BOFFELI G substitution out			
02:08	22 WHARTON T substitution in			
02:08	32 HEITTOLA R substitution in			
02:08				12 PIERRE K substitution out
02:08				24 MAKURAT A substitution out
02:08				4 GREENE M substitution in
02:08				35 WASHINGTON S substitution in
01:50				35 WASHINGTON S 2pt FG in the paint, layup missed
01:47	14 WRIGHT R defensive rebound (2)			
01:40	24 LAUBE K 3pt FG , jump shot missed			
01:35	13 WETERING S offensive rebound (8)			
01:26	14 WRIGHT R foul drawn (2)			3 CAMBRIDGE J foul personal (2 - 2)
01:26				35 WASHINGTON S substitution out
01:26				13 PISSOTT J substitution in
01:22	22 WHARTON T turnover lost ball (2)			
01:05		37-52	-15	23 MOORE I 2pt FG from turnover outside the paint, floating jump shot made (4)



UNI at Vanderbilt

11/25/23 South Point Arena, Las Vegas
2023-24 Women's Basketball

Officials: Bryan Enterline, Missy Brooks, Tommi Paris

Game Time	UNI	Score	Diff	VANDY
01:05	24 LAUBE K foul shooting (1 - 1)			23 MOORE I foul drawn (2)
01:05				23 MOORE I free throw 1 - 1 missed
01:03				3 CAMBRIDGE J offensive rebound (5)
01:03	13 WETERING S foul personal (2 - 2)			3 CAMBRIDGE J foul drawn (3)
01:03	13 WETERING S substitution out			
01:03	42 BOFFELI G substitution in			
00:59				11 OLIVER J 2pt FG second chance outside the paint, turnaround jump shot missed
00:56	32 HEITTOLA R defensive rebound (2)			
00:49	22 WHARTON T 2pt FG in the paint, driving layup blocked			
00:49				3 CAMBRIDGE J block (1)
00:49	offensive rebound (29)			
00:49				23 MOORE I foul player technical (3 - 3)
00:49	24 LAUBE K free throw 1 - 2 made (10)	38-52	-14	
00:49	24 LAUBE K free throw 2 - 2 made (11)	39-52	-13	
00:37	24 LAUBE K 3pt FG , jump shot made (14)	42-52	-10	
00:37	14 WRIGHT R assist (1)			
00:14				3 CAMBRIDGE J 3pt FG , jump shot missed
00:10				13 PISSOTT J offensive rebound (5)
00:00		42-54	-12	3 CAMBRIDGE J 2pt FG second chance in the paint, jump shot made (22)
00:00	42 BOFFELI G foul shooting (3 - 3)			3 CAMBRIDGE J foul drawn (4)
00:00		42-55	-13	3 CAMBRIDGE J free throw 1 - 1 made (23)
END OF PERIOD				
UNI 42-55 VANDY				



UNI at Vanderbilt

11/25/23 South Point Arena, Las Vegas
2023-24 Women's Basketball

Officials: Bryan Enterline, Missy Brooks, Tommi Paris

UNI - 19

NO.	Name	F	Min	FG			Rebounds			Fouls		TP	AS	TO	ST	Blocks		+/-
				M-A	M-A	M-A	OR	DR	TOT	PF	FD					BS	BA	
13	Shateah Wetering	F	08:57	0-0	0-0	0-0	1	3	4	1	1	0	1	0	0	0	0	0
42	Grace Boffeli	F	08:55	3-5	0-0	0-0	0	1	1	1	0	6	1	1	0	0	1	4
0	Maya McDermott	G	07:52	1-1	0-0	0-0	0	1	1	0	0	2	0	0	0	0	0	2
2	Cailyn Morgan	G	03:03	0-1	0-1	0-0	0	0	0	0	0	0	0	1	0	0	0	-2
4	Emerson Green	G	04:58	0-1	0-1	0-0	0	1	1	0	0	0	1	1	0	0	0	-3
24	Kayba Laube		06:57	3-5	3-5	2-2	0	0	0	1	0	11	0	0	0	0	0	4
14	Riley Wright		05:02	0-0	0-0	0-0	0	2	2	0	1	0	1	0	0	0	0	5
22	Taryn Wharton		02:08	0-1	0-0	0-0	0	0	0	0	0	0	0	1	0	0	1	0
32	Rachael Heittola		02:08	0-0	0-0	0-0	0	1	1	0	0	0	0	0	0	0	0	0
Team							1	1	2			0		0				
Totals				7-14	3-7	2-2	2	10	12	3	2	19	4	4	0	0	2	2

Shooting By Period		
3 rd FG%	7-14	50.0%
3PT%	3-7	42.9%
FT%	2-2	100%
GM FG%	7-14	50.0%
3PT%	3-7	42.9%
FT%	2-2	100.0%

Dead Ball Rebounds: 0, 0

Technical Fouls::NONE

Vanderbilt - 17

NO.	Name	F	Min	FG			Rebounds			Fouls		TP	AS	TO	ST	Blocks		+/-
				M-A	M-A	M-A	OR	DR	TOT	PF	FD					BS	BA	
35	Sacha Washington	F	03:26	0-3	0-0	0-0	0	1	1	1	0	0	0	0	0	1	0	2
3	Jordyn Cambridge	G	10:00	2-4	1-2	1-1	1	1	2	1	2	6	1	0	1	1	0	-2
11	Jordyn Oliver	G	10:00	1-3	0-0	0-0	0	2	2	0	0	2	2	0	0	0	0	-2
13	Justine Pissott	G	06:32	2-4	1-2	0-0	2	1	3	0	0	5	0	0	0	0	0	3
23	Iyana Moore	G	10:00	2-4	0-1	0-1	0	0	0	1	1	4	0	0	0	0	0	-2
21	Bella LaChance		00:00	0-0	0-0	0-0	0	0	0	0	0	0	0	0	0	0	0	0
12	Khamil Pierre		05:08	0-1	0-0	0-0	0	0	0	0	0	0	0	0	2	0	0	-4
24	Aga Makurat		02:46	0-0	0-0	0-0	0	0	0	0	0	0	0	0	0	0	0	-5
4	Madison Greene		02:08	0-0	0-0	0-0	0	0	0	0	0	0	0	0	0	0	0	0
Team							0	0	0			0		0				
Totals				7-19	2-5	1-2	3	5	8	3	3	17	3	0	3	2	0	-2

Shooting By Period		
3 rd FG%	7-19	36.8%
3PT%	2-5	40.0%
FT%	1-2	50%
GM FG%	7-19	36.8%
3PT%	2-5	40.0%
FT%	1-2	50.0%

Dead Ball Rebounds: 0, 0

Technical Fouls:Moore 3rd0:49

	UNI	VANDY
Biggest lead	0 (1 st 10:00)	18 (3 rd 6:16)
Best Scoring Run	5(3 rd 0:37)	3(3 rd 6:16)
Lead Changes	0	
Times Tied	0	
Time with Lead	00:00	09:36

	UNI	VANDY
Points from		
Turnovers	0	4
Paint	6	8
Second Chance	2	3
Fast Breaks	0	2
Bench	11	0

	Period by Period Scoring				
	1st	2nd	3rd	4th	TOT
UNI	12	11	19	22	64
VANDY	17	21	17	13	68



UNI at Vanderbilt

11/25/23 South Point Arena, Las Vegas
2023-24 Women's Basketball

Officials: Bryan Enterline, Missy Brooks, Tommi Paris

Period 4

Quarter Starters:

UNI	0 McDermott M	4 Green E	24 Laube K	32 Heittola R	42 Boffeli G
VANDY	3 Cambridge J	11 Oliver J	13 Pissott J	23 Moore I	35 Washington S

Game Time	UNI	Score	Diff	VANDY
10:00	14 WRIGHT R substitution out			
10:00	22 WHARTON T substitution out			
10:00	0 MCDERMOTT M substitution in			
10:00	4 GREEN E substitution in			
10:00				4 GREENE M substitution out
10:00				35 WASHINGTON S substitution in
09:46	0 MCDERMOTT M 2pt FG in the paint, jump shot missed			
09:45	offensive rebound (30)			
09:36	0 MCDERMOTT M 2pt FG second chance in the paint, floating jump shot made (8)	44-55	-11	
09:17		44-58	-14	3 CAMBRIDGE J 3pt FG , jump shot made (26)
08:59	42 BOFFELI G 2pt FG outside the paint, jump shot made (16)	46-58	-12	
08:59	42 BOFFELI G foul drawn (4)			11 OLIVER J foul shooting (1 - 1)
08:59	42 BOFFELI G free throw 1 - 1 missed			
08:57				35 WASHINGTON S defensive rebound (2)
08:42	0 MCDERMOTT M steal (1)			11 OLIVER J turnover bad pass (1)
08:36	24 LAUBE K 3pt FG from turnover, jump shot missed			
08:33				13 PISSOTT J defensive rebound (6)
08:11		46-60	-14	3 CAMBRIDGE J 2pt FG in the paint, layup made (28)
08:11				11 OLIVER J assist (6)
07:50	24 LAUBE K 3pt FG , jump shot made (17)	49-60	-11	
07:50	0 MCDERMOTT M assist (3)			
07:48	Timeout 30 Sec			
07:48	Timeout media			
07:48				13 PISSOTT J substitution out
07:48				24 MAKURAT A substitution in
07:27	42 BOFFELI G steal (2)			35 WASHINGTON S turnover bad pass (3)
07:06	42 BOFFELI G 2pt FG from turnover in the paint, layup made (18)	51-60	-9	
07:06	0 MCDERMOTT M assist (4)			
06:32	24 LAUBE K steal (1)			24 MAKURAT A turnover lost ball (1)
06:21	42 BOFFELI G 2pt FG from turnover in the paint, layup made (20)	53-60	-7	
06:21	4 GREEN E assist (4)			
06:20				Timeout 30 Sec
06:20				24 MAKURAT A substitution out
06:20				35 WASHINGTON S substitution out
06:20				4 GREENE M substitution in
06:20				13 PISSOTT J substitution in
05:51				3 CAMBRIDGE J 3pt FG , jump shot missed
05:47				11 OLIVER J offensive rebound (9)
05:28	0 MCDERMOTT M steal (2)			23 MOORE I turnover lost ball (1)
05:21	24 LAUBE K 3pt FG from turnover, jump shot made (20)	56-60	-4	
05:21	42 BOFFELI G assist (2)			



UNI at Vanderbilt

11/25/23 South Point Arena, Las Vegas
2023-24 Women's Basketball

Officials: Bryan Enterline, Missy Brooks, Tommi Paris

Game Time	UNI	Score	Diff	VANDY
05:21	24 LAUBE K foul drawn (1)			11 OLIVER J foul shooting (2 - 2)
05:21				11 OLIVER J substitution out
05:21				13 PISSOTT J substitution out
05:21				12 PIERRE K substitution in
05:21				35 WASHINGTON S substitution in
05:21	24 LAUBE K free throw 1 - 1 made (21)	57-60	-3	
04:58	32 HEITTOLA R foul personal (1 - 1)			35 WASHINGTON S foul drawn (1)
04:56		57-62	-5	12 PIERRE K 2pt FG in the paint, layup made (8)
04:56				3 CAMBRIDGE J assist (3)
04:26	32 HEITTOLA R 3pt FG , jump shot missed			
04:23				defensive rebound (29)
04:23	32 HEITTOLA R substitution out			
04:23	13 WETERING S substitution in			
04:09				4 GREENE M 3pt FG , jump shot missed
04:06				3 CAMBRIDGE J offensive rebound (6)
04:06	24 LAUBE K foul drawn (2)			3 CAMBRIDGE J foul offensive (3 - 3)
04:06				3 CAMBRIDGE J turnover offensive (2)
03:53	0 MCDERMOTT M 3pt FG from turnover, jump shot missed			
03:50				35 WASHINGTON S defensive rebound (3)
03:32				12 PIERRE K 2pt FG outside the paint, jump shot missed
03:28				23 MOORE I offensive rebound (3)
03:28	24 LAUBE K foul shooting (2 - 2)			23 MOORE I foul drawn (3)
03:28				23 MOORE I free throw 1 - 2 missed
03:28				offensive dead ball rebound (1)
03:28		57-63	-6	23 MOORE I free throw 2 - 2 made (5)
03:16	4 GREEN E 2pt FG in the paint, layup blocked			
03:16				12 PIERRE K block (1)
03:12				4 GREENE M defensive rebound (1)
02:58				12 PIERRE K 2pt FG in the paint, layup missed
02:55				4 GREENE M offensive rebound (2)
02:55		57-65	-8	4 GREENE M 2pt FG second chance in the paint, layup made (4)
02:54	4 GREEN E substitution out			
02:54	14 WRIGHT R substitution in			
02:39	13 WETERING S 3pt FG , jump shot missed			
02:35				23 MOORE I defensive rebound (4)
02:19				4 GREENE M turnover lost ball (1)
02:04	0 MCDERMOTT M 2pt FG from turnover in the paint, floating jump shot made (10)	59-65	-6	
01:43				3 CAMBRIDGE J 3pt FG , jump shot missed
01:40	14 WRIGHT R defensive rebound (3)			
01:40	14 WRIGHT R foul drawn (3)			35 WASHINGTON S foul personal (4 - 4)
01:40	14 WRIGHT R substitution out			
01:40	2 MORGAN C substitution in			
01:40				35 WASHINGTON S substitution out
01:40				11 OLIVER J substitution in
01:25	42 BOFFELI G foul drawn (5)			3 CAMBRIDGE J foul shooting (4 - 5)
01:25				12 PIERRE K substitution out
01:25				13 PISSOTT J substitution in
01:25	42 BOFFELI G free throw 1 - 2 made (21)	60-65	-5	



UNI at Vanderbilt

11/25/23 South Point Arena, Las Vegas
2023-24 Women's Basketball

Officials: Bryan Enterline, Missy Brooks, Tommi Paris

Game Time	UNI	Score	Diff	VANDY
01:25	42 BOFFELI G free throw 2 - 2 made (22)	61-65	-4	
01:25	13 WETERING S substitution out			
01:25	4 GREEN E substitution in			
00:57				3 CAMBRIDGE J 2pt FG outside the paint, jump shot missed
00:53	42 BOFFELI G defensive rebound (5)			
00:44	4 GREEN E 2pt FG outside the paint, jump shot missed			
00:43				11 OLIVER J defensive rebound (10)
00:43	jump ball situation			
00:43				Timeout 60 Sec
00:43				11 OLIVER J substitution out
00:43				24 MAKURAT A substitution in
00:36	4 GREEN E foul personal (1 - 3)			4 GREENE M foul drawn (1)
00:34	0 MCDERMOTT M foul personal (2 - 4)			3 CAMBRIDGE J foul drawn (5)
00:31	2 MORGAN C foul personal (1 - 5)			23 MOORE I foul drawn (4)
00:31				23 MOORE I free throw 1 - 2 missed
00:31				offensive dead ball rebound (2)
00:31				23 MOORE I free throw 2 - 2 missed
00:30	2 MORGAN C defensive rebound (3)			
00:21	0 MCDERMOTT M 2pt FG in the paint, driving layup blocked			
00:21				24 MAKURAT A block (1)
00:21				24 MAKURAT A defensive rebound (3)
00:19	24 LAUBE K foul personal (3 - 6)			4 GREENE M foul drawn (2)
00:19				23 MOORE I substitution out
00:19				24 MAKURAT A substitution out
00:19				11 OLIVER J substitution in
00:19				12 PIERRE K substitution in
00:19				4 GREENE M free throw fast break 1 - 2 missed
00:19				offensive dead ball rebound (3)
00:19		61-66	-5	4 GREENE M free throw fast break 2 - 2 made (5)
00:19	Timeout 60 Sec			
00:19				13 PISSOTT J substitution out
00:19				23 MOORE I substitution in
00:14	42 BOFFELI G foul drawn (6)			4 GREENE M foul personal (3 - 6)
00:14	42 BOFFELI G free throw fast break 1 - 2 missed			
00:14	offensive dead ball rebound (1)			
00:14	42 BOFFELI G free throw fast break 2 - 2 made (23)	62-66	-4	
00:14				Timeout 30 Sec
00:14	0 MCDERMOTT M substitution out			
00:14	13 WETERING S substitution in			
00:14				11 OLIVER J substitution out
00:14				12 PIERRE K substitution out
00:14				13 PISSOTT J substitution in
00:14				24 MAKURAT A substitution in
00:12	42 BOFFELI G foul personal (4 - 7)			13 PISSOTT J foul drawn (1)
00:12	13 WETERING S substitution out			
00:12	0 MCDERMOTT M substitution in			
00:12				24 MAKURAT A substitution out
00:12				5 ALLEN R substitution in
00:12				13 PISSOTT J free throw fast break 1 - 2 missed



UNI at Vanderbilt

11/25/23 South Point Arena, Las Vegas
2023-24 Women's Basketball

Officials: Bryan Enterline, Missy Brooks, Tommi Paris

Game Time	UNI	Score	Diff	VANDY
00:12				offensive dead ball rebound (4)
00:12		62-67	-5	13 PISSOTT J free throw fast break 2 - 2 made (8)
00:12				Timeout 30 Sec
00:10				5 ALLEN R substitution out
00:10				13 PISSOTT J substitution out
00:10				11 OLIVER J substitution in
00:10				12 PIERRE K substitution in
00:08	0 MCDERMOTT M 3pt FG , jump shot missed			
00:03				11 OLIVER J defensive rebound (11)
00:03	2 MORGAN C foul personal (2 - 8)			11 OLIVER J foul drawn (1)
00:03		62-68	-6	11 OLIVER J free throw fast break 1 - 2 made (8)
00:03				11 OLIVER J free throw fast break 2 - 2 missed
00:01				12 PIERRE K offensive rebound (2)
00:00				12 PIERRE K 2pt FG second chance in the paint, layup missed
00:00	42 BOFFELI G defensive rebound (6)			
00:00	42 BOFFELI G foul drawn (7)			12 PIERRE K foul personal (2 - 7)
00:00	42 BOFFELI G free throw fast break 1 - 2 made (24)	63-68	-5	
00:00	42 BOFFELI G free throw fast break 2 - 2 made (25)	64-68	-4	
END OF GAME				
UNI 64-68 VANDY				



UNI at Vanderbilt

11/25/23 South Point Arena, Las Vegas
2023-24 Women's Basketball

Officials: Bryan Enterline, Missy Brooks, Tommi Paris

UNI - 22

NO.	Name	Min	FG	3P	FT	Rebounds			Fouls		TP	AS	TO	ST	Blocks		+/-
			M-A	M-A	M-A	OR	DR	TOT	PF	FD					BS	BA	
13	Shateah Wetering	F 03:00	0-1	0-1	0-0	0	0	0	0	0	0	0	0	0	0	0	1
42	Grace Boffeli	F 10:00	3-3	0-0	5-7	0	2	2	1	4	11	1	0	1	0	0	9
0	Maya McDermott	G 09:58	2-6	0-2	0-0	0	0	0	1	0	4	2	0	2	0	1	9
2	Cailyn Morgan	G 01:40	0-0	0-0	0-0	0	1	1	2	0	0	0	0	0	0	0	2
4	Emerson Green	G 08:31	0-2	0-0	0-0	0	0	0	1	0	0	1	0	0	0	1	5
22	Taryn Wharton	00:00	0-0	0-0	0-0	0	0	0	0	0	0	0	0	0	0	0	0
24	Kayba Laube	10:00	2-3	2-3	1-1	0	0	0	2	2	7	0	0	1	0	0	9
32	Rachael Heittola	05:37	0-1	0-1	0-0	0	0	0	1	0	0	0	0	0	0	0	8
14	Riley Wright	01:14	0-0	0-0	0-0	0	1	1	0	1	0	0	0	0	0	0	2
Team						1	0	1			0		0				
Totals			7-16	2-7	6-8	1	4	5	8	7	22	4	0	4	0	2	9

Shooting By Period		
4 th FG%	7-16	43.8%
3PT%	2-7	28.6%
FT%	6-8	75%
GM FG%	7-16	43.8%
3PT%	2-7	28.6%
FT%	6-8	75.0%

Dead Ball Rebounds: 1, 0

Technical Fouls::NONE

Vanderbilt - 13

NO.	Name	Min	FG	3P	FT	Rebounds			Fouls		TP	AS	TO	ST	Blocks		+/-
			M-A	M-A	M-A	OR	DR	TOT	PF	FD					BS	BA	
35	Sacha Washington	F 07:21	0-0	0-0	0-0	0	2	2	1	1	0	0	1	0	0	0	-4
3	Jordyn Cambridge	G 10:00	2-5	1-3	0-0	1	0	1	2	1	5	1	1	0	0	0	-9
11	Jordyn Oliver	G 05:49	0-0	0-0	1-2	1	2	3	2	1	1	1	1	0	0	0	-12
13	Justine Pissott	G 04:22	0-0	0-0	1-2	0	1	1	0	1	1	0	0	0	0	0	-5
23	Iyana Moore	G 10:00	0-0	0-0	1-4	1	1	2	0	2	1	0	1	0	0	0	-10
24	Aga Makurat	01:55	0-0	0-0	0-0	0	1	1	0	0	0	0	1	0	1	0	-4
4	Madison Greene	06:20	1-2	0-1	1-2	1	1	2	1	2	3	0	1	0	0	0	-3
12	Khamil Pierre	04:10	1-4	0-0	0-0	1	0	1	1	0	2	0	0	0	1	0	1
5	Ryanne Allen	00:03	0-0	0-0	0-0	0	0	0	0	0	0	0	0	0	0	0	1
Team						0	1	1			0		0				
Totals			4-11	1-4	4-10	5	9	14	7	8	13	2	6	0	2	0	-9

Shooting By Period		
4 th FG%	4-11	36.4%
3PT%	1-4	25.0%
FT%	4-10	40%
GM FG%	4-11	36.4%
3PT%	1-4	25.0%
FT%	4-10	40.0%

Dead Ball Rebounds: 4, 0

Technical Fouls::NONE

	UNI	VANDY
Biggest lead	0 (1 st 10:00)	14 (4 th 9:17)
Best Scoring Run	11(4 th 5:21)	5(4 th 2:55)
Lead Changes	0	
Times Tied	0	
Time with Lead	00:00	09:46

Points from	UNI	VANDY
Turnovers	10	0
Paint	8	6
Second Chance	2	3
Fast Breaks	3	3
Bench	7	5

Period by Period Scoring					
	1st	2nd	3rd	4th	TOT
UNI	12	11	19	22	64
VANDY	17	21	17	13	68



UNI at Vanderbilt

11/25/23 South Point Arena, Las Vegas
2023-24 Women's Basketball

Game Time: 1:30 PM
Game Duration: 1:50

Officials: Bryan Enterline, Missy Brooks, Tommi Paris

UNI - 41

NO.	Name	Min	FG			Rebounds			Fouls		TP	AS	TO	ST	Blocks		+/-
			M-A	M-A	M-A	OR	DR	TOT	PF	FD					BS	BA	
13	Shateah Wetering	F 11:57	0-1	0-1	0-0	1	3	4	1	1	0	1	0	0	0	0	1
42	Grace Boffeli	F 18:55	6-8	0-0	5-7	0	3	3	2	4	17	2	1	1	0	1	13
0	Maya McDermott	G 17:50	3-7	0-2	0-0	0	1	1	1	0	6	2	0	2	0	1	11
2	Cailyn Morgan	G 04:43	0-1	0-1	0-0	0	1	1	2	0	0	0	1	0	0	0	0
4	Emerson Green	G 13:29	0-3	0-1	0-0	0	1	1	1	0	0	2	1	0	0	1	2
24	Kayba Laube	16:57	5-8	5-8	3-3	0	0	0	3	2	18	0	0	1	0	0	13
14	Riley Wright	06:16	0-0	0-0	0-0	0	3	3	0	2	0	1	0	0	0	0	7
22	Taryn Wharton	02:08	0-1	0-0	0-0	0	0	0	0	0	0	0	1	0	0	1	0
32	Rachael Heittola	07:45	0-1	0-1	0-0	0	1	1	1	0	0	0	0	0	0	0	8
Team						2	1	3			0			0			
Totals			14-30	5-14	8-10	3	14	17	11	9	41	8	4	4	0	4	11

Shooting By Period		
3 rd FG%	7-14	50.0%
3PT%	3-7	42.9%
FT%	2-2	100%
4 th FG%	7-16	43.8%
3PT%	2-7	28.6%
FT%	6-8	75%
GM FG%	14-30	46.7%
3PT%	5-14	35.7%
FT%	8-10	80.0%

Dead Ball Rebounds: 1, 0

Technical Fouls::NONE

Vanderbilt - 30

NO.	Name	Min	FG			Rebounds			Fouls		TP	AS	TO	ST	Blocks		+/-
			M-A	M-A	M-A	OR	DR	TOT	PF	FD					BS	BA	
35	Sacha Washington	F 10:47	0-3	0-0	0-0	0	3	3	2	1	0	0	1	0	1	0	-2
3	Jordyn Cambridge	G 20:00	4-9	2-5	1-1	2	1	3	3	3	11	2	1	1	1	0	-11
11	Jordyn Oliver	G 15:49	1-3	0-0	1-2	1	4	5	2	1	3	3	1	0	0	0	-14
13	Justine Pissott	G 10:54	2-4	1-2	1-2	2	2	4	0	1	6	0	0	0	0	0	-2
23	Iyana Moore	G 20:00	2-4	0-1	1-5	1	1	2	1	3	5	0	1	0	0	0	-12
21	Bella LaChance	00:00	0-0	0-0	0-0	0	0	0	0	0	0	0	0	0	0	0	0
12	Khamil Pierre	09:18	1-5	0-0	0-0	1	0	1	1	0	2	0	0	2	1	0	-3
24	Aga Makurat	04:41	0-0	0-0	0-0	0	1	1	0	0	0	0	1	0	1	0	-9
4	Madison Greene	08:28	1-2	0-1	1-2	1	1	2	1	2	3	0	1	0	0	0	-3
5	Ryanne Allen	00:03	0-0	0-0	0-0	0	0	0	0	0	0	0	0	0	0	0	1
Team						0	1	1			0			0			
Totals			11-30	3-9	5-12	8	14	22	10	11	30	5	6	3	4	0	-11

Shooting By Period		
3 rd FG%	7-19	36.8%
3PT%	2-5	40.0%
FT%	1-2	50%
4 th FG%	4-11	36.4%
3PT%	1-4	25.0%
FT%	4-10	40%
GM FG%	11-30	36.7%
3PT%	3-9	33.3%
FT%	5-12	41.7%

Dead Ball Rebounds: 4, 0

Technical Fouls:Moore 3rd0:49

	UNI	VANDY
Biggest lead	0 (1 st 10:00)	18 (3 rd 6:16)
Best Scoring Run	11(4 th 5:21)	5(4 th 2:55)
Lead Changes	0	
Times Tied	0	
Time with Lead	00:00	19:36

	UNI	VANDY
Points from		
Turnovers	10	4
Paint	14	14
Second Chance	4	6
Fast Breaks	3	5
Bench	18	5

	Period by Period Scoring				
	1st	2nd	3rd	4th	TOT
UNI	12	11	19	22	64
VANDY	17	21	17	13	68



UNI at Vanderbilt

11/25/23 South Point Arena, Las Vegas
2023-24 Women's Basketball

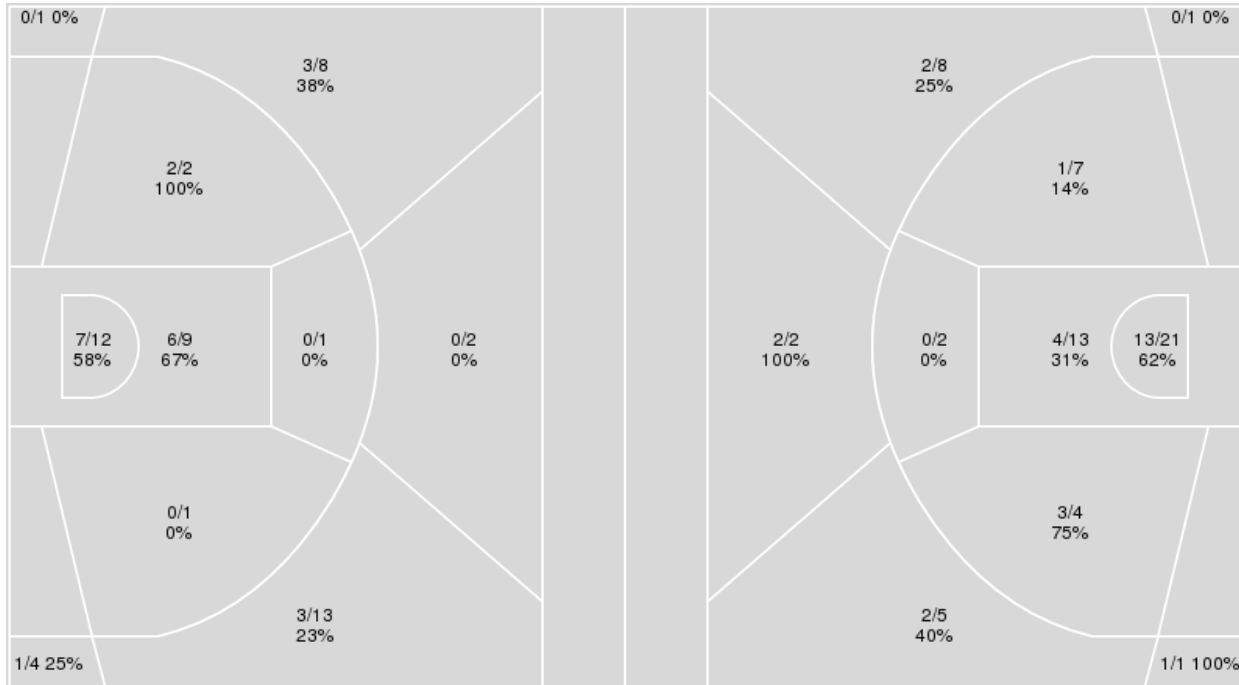
Officials: Bryan Enterline, Missy Brooks, Tommi Paris

{ Players => All; } FG Types => All; Results => All;

{ Players => All; } FG Types => All; Results => All;

UNI

Vanderbilt



UNI	M/A	%
Field Goals	22/53	42
2 Points	15/25	60
3 Points	7/28	25
Free Throws	13/16	81

Vanderbilt	M/A	%
Field Goals	28/64	44
2 Points	21/47	45
3 Points	7/17	41
Free Throws	5/13	38



UNI at Vanderbilt

11/25/23 South Point Arena, Las Vegas
2023-24 Women's Basketball

Officials: Bryan Enterline, Missy Brooks, Tommi Paris

UNI

No	Name	Mins		Score		Points Diff		Points per Min		Assists		Rebounds		Steals		Turnovers	
		On	Off	On	Off	On	Off	On	Off	On	Off	On	Off	On	Off	On	Off
0	Maya McDermott	31:19	08:41	56 - 51	8 - 17	5	-9	1.79	0.92	11	2	26	8	4	1	10	7
2	Cailyn Morgan	19:44	20:16	25 - 32	39 - 36	-7	3	1.27	1.92	4	9	22	12	0	5	10	7
4	Emerson Green	26:02	13:58	35 - 44	29 - 24	-9	5	1.34	2.08	8	5	21	13	5	0	13	4
13	Shateah Wetering	30:08	09:52	38 - 51	26 - 17	-13	9	1.26	2.64	7	6	28	6	0	5	16	1
14	Riley Wright	12:22	27:38	27 - 24	37 - 44	3	-7	2.18	1.34	5	8	11	23	0	5	5	12
22	Taryn Wharton	08:39	31:21	8 - 17	56 - 51	-9	5	0.92	1.79	2	11	8	26	1	4	7	10
24	Kayba Laube	23:17	16:43	44 - 39	20 - 29	5	-9	1.89	1.20	9	4	17	17	5	0	6	11
32	Rachael Heittola	12:09	27:51	23 - 19	41 - 49	4	-8	1.89	1.47	5	8	9	25	4	1	5	12
33	Katy Reyerson	01:49	38:11	3 - 4	61 - 64	-1	-3	1.65	1.60	1	12	0	34	1	4	1	16
42	Grace Boffeli	34:31	05:29	61 - 59	3 - 9	2	-6	1.77	0.55	13	0	28	6	5	0	12	5

Vanderbilt

No	Name	Mins		Score		Points Diff		Points per Min		Assists		Rebounds		Steals		Turnovers	
		On	Off	On	Off	On	Off	On	Off	On	Off	On	Off	On	Off	On	Off
3	Jordyn Cambridge	39:30	00:30	68 - 64	0 - 0	4	0	1.72	0.00	15	0	38	1	12	0	10	0
4	Madison Greene	19:21	20:39	35 - 27	33 - 37	8	-4	1.81	1.60	7	8	22	17	7	5	6	4
5	Ryanne Allen	00:03	39:57	1 - 0	67 - 64	1	3	22.22	1.68	0	15	0	39	0	12	0	10
11	Jordyn Oliver	30:00	09:60	50 - 61	18 - 3	-11	15	1.67	1.80	10	5	27	12	6	6	6	4
12	Khamil Pierre	19:50	20:10	37 - 32	31 - 32	5	-1	1.87	1.54	8	7	18	21	6	6	4	6
13	Justine Pissott	24:42	15:18	47 - 36	21 - 28	11	-7	1.90	1.37	11	4	25	14	10	2	4	6
21	Bella LaChance	00:45	39:15	2 - 0	66 - 64	2	2	2.66	1.68	1	14	2	37	0	12	0	10
23	Iyana Moore	30:48	09:12	47 - 52	21 - 12	-5	9	1.53	2.28	10	5	31	8	8	4	8	2
24	Aga Makurat	14:58	25:02	23 - 25	45 - 39	-2	6	1.54	1.80	5	10	9	30	5	7	5	5
35	Sacha Washington	20:03	19:57	30 - 23	38 - 41	7	-3	1.50	1.90	8	7	23	16	6	6	7	3



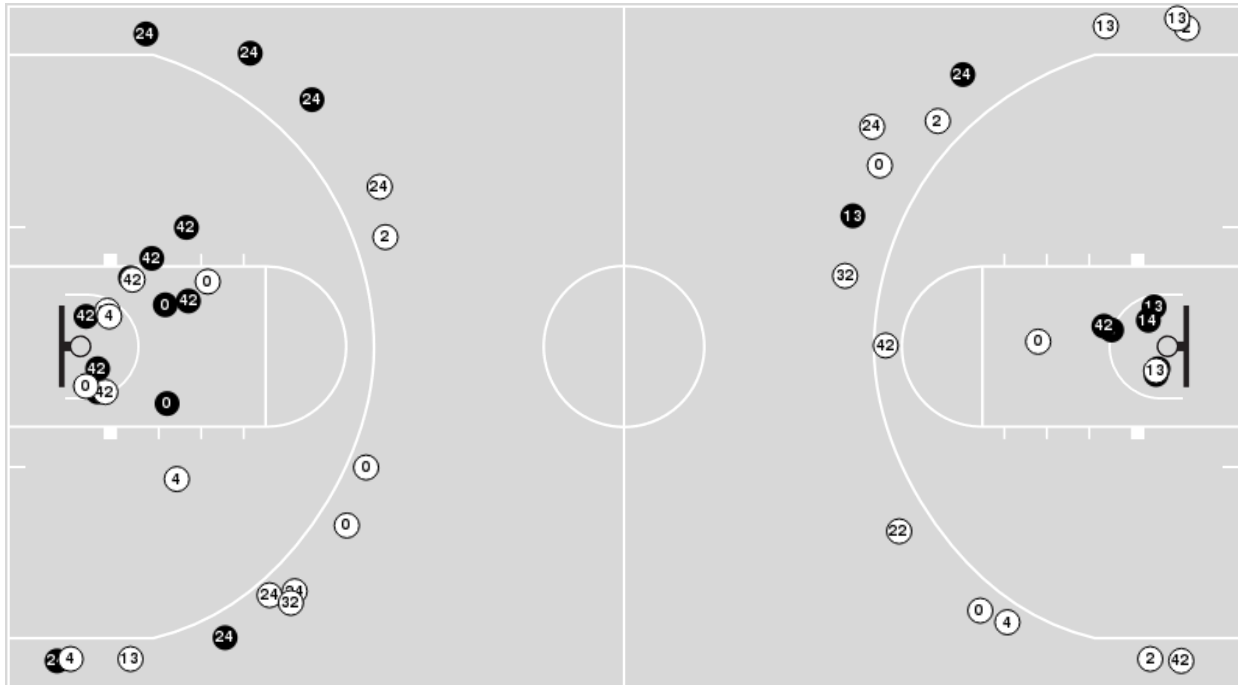
UNI at Vanderbilt

11/25/23 South Point Arena, Las Vegas
2023-24 Women's Basketball

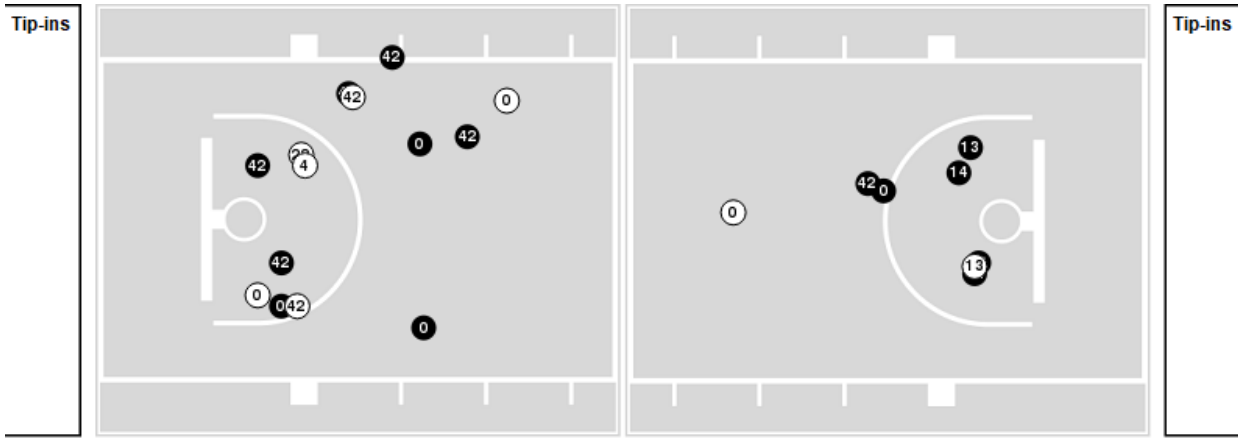
Officials: Bryan Enterline, Missy Brooks, Tommi Paris

Players => AllFG Types=>AllResults=>All
UNI

All Field Goals



Blow Up Chart



N Made **O** Missed N - Player Number

UNI	M/A	%
Field Goals	22/53	42
2 Points	15/25	60
3 Points	7/28	25
Free Throws	13/16	81

UNI	M/A	%
Points in the Paint	26 (13 / 21)	62
Fast Break Points	3 (3/4)	75
Second Chance Points	10 (6/7)	86
Effective FG%	48	



UNI at Vanderbilt

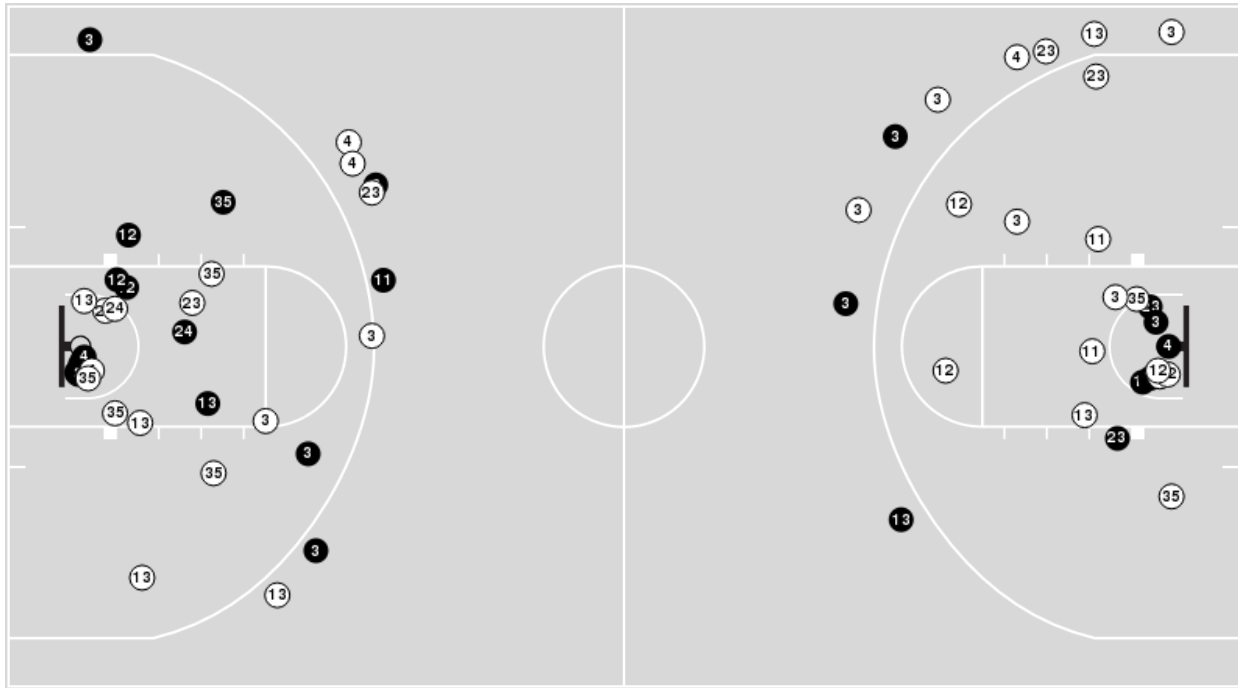
11/25/23 South Point Arena, Las Vegas
2023-24 Women's Basketball

Officials: Bryan Enterline, Missy Brooks, Tommi Paris

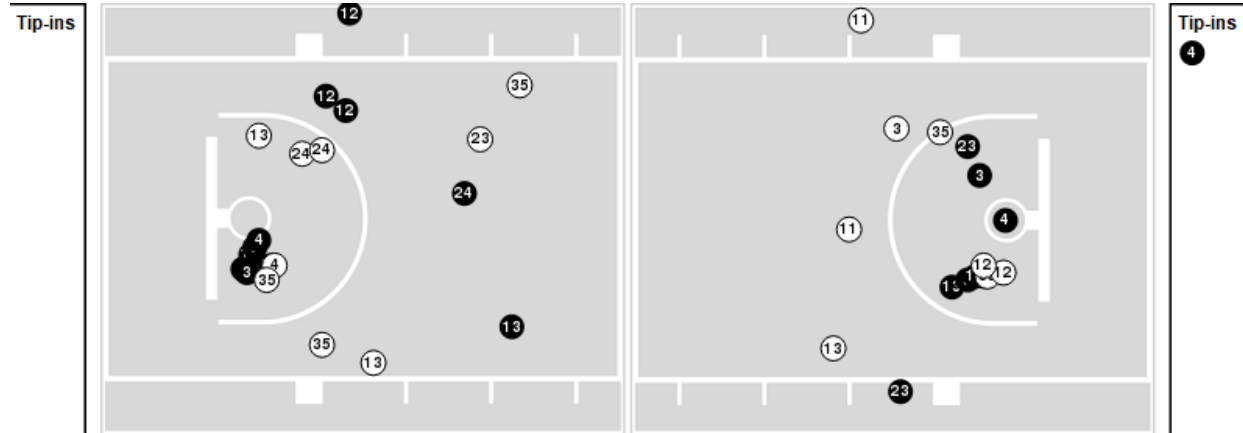
Players => AllFG Types=>AllResults=>All

Vanderbilt

All Field Goals



Blow Up Chart



● Made ○ Missed N - Player Number

Vanderbilt	M/A	%
Field Goals	28/64	44
2 Points	21/47	45
3 Points	7/17	41
Free Throws	5/13	38

Vanderbilt	M/A	%
Points in the Paint	34 (17 / 34)	50
Fast Break Points	11 (7/11)	64
Second Chance Points	11 (6/12)	50
Effective FG%	49	



UNI at Vanderbilt

11/25/23 South Point Arena, Las Vegas
2023-24 Women's Basketball

Officials: Bryan Enterline, Missy Brooks, Tommi Paris

UNI

Lineup	Quarter On	Time On	Quarter Off	Time Off	Time on Court	Score	Score Diff	Reb	Stl	Tov	Ass	PPP
0- McDermott M/ 2- Morgan C/ 4- Green E/ 13- Wetering S/ 42- Boffeli G/	1	10:00	1	04:56	05:04	6-8	-2	7	0	1	1	0.7614
4- Green E/ 22- Wharton T/ 24- Laube K/ 33- Reyerson K/ 42- Boffeli G/	1	04:56	1	03:07	01:49	3-4	-1	0	1	1	1	0.7500
4- Green E/ 13- Wetering S/ 22- Wharton T/ 24- Laube K/ 32- Heittola R/	1	03:07	1	01:39	01:28	0-2	-2	2	0	1	0	0.0000
0- McDermott M/ 2- Morgan C/ 4- Green E/ 13- Wetering S/ 32- Heittola R/	1	01:39	1	01:38	00:01	3-0	3	0	0	0	0	2.0833
0- McDermott M/ 2- Morgan C/ 13- Wetering S/ 24- Laube K/ 32- Heittola R/	1	01:38	2	10:00	01:38	0-3	-3	2	0	1	0	0.0000
0- McDermott M/ 4- Green E/ 13- Wetering S/ 14- Wright R/ 32- Heittola R/	2	10:00	2	08:46	01:14	0-2	-2	0	0	2	0	0.0000
0- McDermott M/ 4- Green E/ 13- Wetering S/ 14- Wright R/ 42- Boffeli G/	2	08:46	2	08:18	00:28	0-3	-3	1	0	1	0	0.0000
2- Morgan C/ 4- Green E/ 13- Wetering S/ 22- Wharton T/ 42- Boffeli G/	2	08:18	2	05:49	02:29	0-4	-4	2	0	4	0	0.0000
0- McDermott M/ 2- Morgan C/ 13- Wetering S/ 24- Laube K/ 42- Boffeli G/	2	05:49	2	04:24	01:25	0-2	-2	1	0	1	0	0.0000
0- McDermott M/ 2- Morgan C/ 13- Wetering S/ 14- Wright R/ 42- Boffeli G/	2	04:24	2	00:45	03:38	11-8	3	2	0	1	3	1.8707
2- Morgan C/ 13- Wetering S/ 14- Wright R/ 22- Wharton T/ 42- Boffeli G/	2	00:45	2	00:02	00:42	0-2	-2	0	0	0	0	0.0000
2- Morgan C/ 13- Wetering S/ 14- Wright R/ 22- Wharton T/ 32- Heittola R/	2	00:02	3	10:00	00:02	0-0	0	0	0	0	0	0.0000
0- McDermott M/ 2- Morgan C/ 4- Green E/ 13- Wetering S/ 42- Boffeli G/	3	10:00	3	06:57	03:03	0-2	-2	5	0	2	0	0.0000
0- McDermott M/ 4- Green E/ 13- Wetering S/ 24- Laube K/ 42- Boffeli G/	3	06:57	3	05:02	01:55	5-6	-1	0	0	1	2	1.6667
0- McDermott M/ 13- Wetering S/ 14- Wright R/ 24- Laube K/ 42- Boffeli G/	3	05:02	3	02:08	02:54	9-4	5	3	0	0	1	1.8000
13- Wetering S/ 14- Wright R/ 22- Wharton T/ 24- Laube K/ 32- Heittola R/	3	02:08	3	01:03	01:05	0-2	-2	2	0	1	0	0.0000
14- Wright R/ 22- Wharton T/ 24- Laube K/ 32- Heittola R/ 42- Boffeli G/	3	01:03	4	10:00	01:03	5-3	2	2	0	0	1	2.6596
0- McDermott M/ 4- Green E/ 24- Laube K/ 32- Heittola R/ 42- Boffeli G/	4	10:00	4	04:23	05:37	15-7	8	1	4	0	4	1.6892
0- McDermott M/ 4- Green E/ 13- Wetering S/ 24- Laube K/ 42- Boffeli G/	4	04:23	4	02:54	01:29	0-3	-3	0	0	0	0	0.0000
0- McDermott M/ 13- Wetering S/ 14- Wright R/ 24- Laube K/ 42- Boffeli G/	4	02:54	4	01:40	01:14	2-0	2	1	0	0	0	1.0000
0- McDermott M/ 2- Morgan C/ 13- Wetering S/ 24- Laube K/ 42- Boffeli G/	4	01:40	4	01:25	00:15	2-0	2	0	0	0	0	2.2727
0- McDermott M/ 2- Morgan C/ 4- Green E/ 24- Laube K/ 42- Boffeli G/	4	01:25	4	00:14	01:10	1-1	0	2	0	0	0	0.3472
2- Morgan C/ 4- Green E/ 13- Wetering S/ 24- Laube K/ 42- Boffeli G/	4	00:14	4	00:12	00:02	0-0	0	0	0	0	0	0.0000
0- McDermott M/ 2- Morgan C/ 4- Green E/ 24- Laube K/ 42- Boffeli G/	4	00:12	4	00:00	00:12	2-2	0	1	0	0	0	1.0638



UNI at Vanderbilt

11/25/23 South Point Arena, Las Vegas
2023-24 Women's Basketball

Officials: Bryan Enterline, Missy Brooks, Tommi Paris

Vanderbilt

Lineup	Quarter On	Time On	Quarter Off	Time Off	Time on Court	Score	Score Diff	Reb	Stl	Tov	Ass	PPP
3- Cambridge J/ 11- Oliver J/ 13- Pissott J/ 23- Moore I/ 35- Washington S/	1	10:00	1	04:56	05:04	8-6	2	5	1	0	3	0.8475
3- Cambridge J/ 11- Oliver J/ 23- Moore I/ 24- Makurat A/ 35- Washington S/	1	04:56	1	03:07	01:49	4-3	1	2	0	1	0	1.3333
3- Cambridge J/ 11- Oliver J/ 12- Pierre K/ 23- Moore I/ 24- Makurat A/	1	03:07	1	01:38	01:29	2-2	0	0	1	0	0	1.0000
3- Cambridge J/ 11- Oliver J/ 12- Pierre K/ 13- Pissott J/ 24- Makurat A/	1	01:38	1	01:38	00:00	0-1	-1	0	0	0	0	0.0000
3- Cambridge J/ 4- Greene M/ 12- Pierre K/ 13- Pissott J/ 24- Makurat A/	1	01:38	2	07:45	03:53	8-0	8	3	3	1	2	1.3333
3- Cambridge J/ 4- Greene M/ 12- Pierre K/ 13- Pissott J/ 23- Moore I/	2	07:45	2	06:47	00:58	0-0	0	1	0	1	0	0.0000
3- Cambridge J/ 4- Greene M/ 13- Pissott J/ 23- Moore I/ 35- Washington S/	2	06:47	2	05:49	00:58	4-0	4	0	3	0	2	1.3333
4- Greene M/ 11- Oliver J/ 23- Moore I/ 24- Makurat A/ 35- Washington S/	2	05:49	2	05:19	00:30	0-0	0	1	0	0	0	0.0000
3- Cambridge J/ 4- Greene M/ 11- Oliver J/ 24- Makurat A/ 35- Washington S/	2	05:19	2	04:24	00:55	2-0	2	1	1	1	1	1.0000
3- Cambridge J/ 4- Greene M/ 11- Oliver J/ 12- Pierre K/ 24- Makurat A/	2	04:24	2	02:55	01:29	3-4	-1	0	0	0	1	1.5000
3- Cambridge J/ 4- Greene M/ 11- Oliver J/ 13- Pissott J/ 24- Makurat A/	2	02:55	2	02:43	00:12	0-2	-2	0	0	0	0	0.0000
3- Cambridge J/ 4- Greene M/ 11- Oliver J/ 12- Pierre K/ 13- Pissott J/	2	02:43	2	00:45	01:57	5-5	0	2	0	0	0	1.6667
3- Cambridge J/ 11- Oliver J/ 12- Pierre K/ 13- Pissott J/ 21- LaChance B/	2	00:45	3	10:00	00:45	2-0	2	2	0	0	1	2.0000
3- Cambridge J/ 11- Oliver J/ 13- Pissott J/ 23- Moore I/ 35- Washington S/	3	10:00	3	07:16	02:44	2-0	2	5	1	0	0	0.4000
3- Cambridge J/ 11- Oliver J/ 12- Pierre K/ 13- Pissott J/ 23- Moore I/	3	07:16	3	04:54	02:22	6-5	1	0	2	0	2	1.5000
3- Cambridge J/ 11- Oliver J/ 12- Pierre K/ 23- Moore I/ 24- Makurat A/	3	04:54	3	02:08	02:46	4-9	-5	1	0	0	1	1.0000
3- Cambridge J/ 4- Greene M/ 11- Oliver J/ 23- Moore I/ 35- Washington S/	3	02:08	3	01:26	00:42	0-0	0	0	0	0	0	0.0000
3- Cambridge J/ 4- Greene M/ 11- Oliver J/ 13- Pissott J/ 23- Moore I/	3	01:26	4	10:00	01:26	5-5	0	2	0	0	0	1.7361
3- Cambridge J/ 11- Oliver J/ 13- Pissott J/ 23- Moore I/ 35- Washington S/	4	10:00	4	07:48	02:12	5-7	-2	2	0	1	1	1.6667
3- Cambridge J/ 11- Oliver J/ 23- Moore I/ 24- Makurat A/ 35- Washington S/	4	07:48	4	06:20	01:28	0-4	-4	0	0	2	0	0.0000
3- Cambridge J/ 4- Greene M/ 11- Oliver J/ 13- Pissott J/ 23- Moore I/	4	06:20	4	05:21	00:59	0-3	-3	1	0	1	0	0.0000
3- Cambridge J/ 4- Greene M/ 12- Pierre K/ 23- Moore I/ 35- Washington S/	4	05:21	4	01:40	03:41	5-3	2	7	0	2	1	0.8503
3- Cambridge J/ 4- Greene M/ 11- Oliver J/ 12- Pierre K/ 23- Moore I/	4	01:40	4	01:25	00:15	0-0	0	0	0	0	0	0.0000
3- Cambridge J/ 4- Greene M/ 11- Oliver J/ 13- Pissott J/ 23- Moore I/	4	01:25	4	00:43	00:41	0-2	-2	1	0	0	0	0.0000
3- Cambridge J/ 4- Greene M/ 13- Pissott J/ 23- Moore I/ 24- Makurat A/	4	00:43	4	00:19	00:24	0-0	0	1	0	0	0	0.0000
3- Cambridge J/ 4- Greene M/ 11- Oliver J/ 12- Pierre K/ 13- Pissott J/	4	00:19	4	00:19	00:00	1-0	1	0	0	0	0	1.1364
3- Cambridge J/ 4- Greene M/ 11- Oliver J/ 12- Pierre K/ 23- Moore I/	4	00:19	4	00:14	00:04	0-1	-1	0	0	0	0	0.0000
3- Cambridge J/ 4- Greene M/ 13- Pissott J/ 23- Moore I/ 24- Makurat A/	4	00:14	4	00:12	00:02	0-0	0	0	0	0	0	0.0000
3- Cambridge J/ 4- Greene M/ 5- Allen R/ 13- Pissott J/ 23- Moore I/	4	00:12	4	00:10	00:02	1-0	1	0	0	0	0	1.1364
3- Cambridge J/ 4- Greene M/ 11- Oliver J/ 12- Pierre K/ 23- Moore I/	4	00:10	4	00:00	00:10	1-2	-1	2	0	0	0	1.1364



UNI at Vanderbilt

11/25/23 South Point Arena, Las Vegas
2023-24 Women's Basketball

Game Time: 1:30 PM
Game Duration: 1:50

Officials: Bryan Enterline, Missy Brooks, Tommi Paris

UNI

Lineup	Time	Score	Score Diff	Pts/Min	Reb	Stl	Tov	Ass	PPP
0- McDermott M/ 2- Morgan C/ 4- Green E/ 13- Wetering S/ 42- Boffeli G/	08:07	6-10	-4	0.7392	12	0	3	1	0.4323
0- McDermott M/ 4- Green E/ 24- Laube K/ 32- Heittola R/ 42- Boffeli G/	05:37	15-7	8	2.6706	1	4	0	4	1.6892
0- McDermott M/ 13- Wetering S/ 14- Wright R/ 24- Laube K/ 42- Boffeli G/	04:08	11-4	7	2.6613	4	0	0	1	1.5714
0- McDermott M/ 2- Morgan C/ 13- Wetering S/ 14- Wright R/ 42- Boffeli G/	03:38	11-8	3	3.0151	2	0	1	3	1.8707
0- McDermott M/ 4- Green E/ 13- Wetering S/ 24- Laube K/ 42- Boffeli G/	03:24	5-9	-4	1.4706	0	0	1	2	1.0000
2- Morgan C/ 4- Green E/ 13- Wetering S/ 22- Wharton T/ 42- Boffeli G/	02:29	0-4	-4	0.0000	2	0	4	0	0.0000
4- Green E/ 22- Wharton T/ 24- Laube K/ 33- Reyerson K/ 42- Boffeli G/	01:49	3-4	-1	1.6514	0	1	1	1	0.7500
0- McDermott M/ 2- Morgan C/ 13- Wetering S/ 24- Laube K/ 42- Boffeli G/	01:40	2-2	0	1.2000	1	0	1	0	0.6944
0- McDermott M/ 2- Morgan C/ 13- Wetering S/ 24- Laube K/ 32- Heittola R/	01:38	0-3	-3	0.0000	2	0	1	0	0.0000
4- Green E/ 13- Wetering S/ 22- Wharton T/ 24- Laube K/ 32- Heittola R/	01:28	0-2	-2	0.0000	2	0	1	0	0.0000
0- McDermott M/ 2- Morgan C/ 4- Green E/ 24- Laube K/ 42- Boffeli G/	01:22	3-3	0	2.1713	3	0	0	0	0.6303
0- McDermott M/ 4- Green E/ 13- Wetering S/ 14- Wright R/ 32- Heittola R/	01:14	0-2	-2	0.0000	0	0	2	0	0.0000
13- Wetering S/ 14- Wright R/ 22- Wharton T/ 24- Laube K/ 32- Heittola R/	01:05	0-2	-2	0.0000	2	0	1	0	0.0000
14- Wright R/ 22- Wharton T/ 24- Laube K/ 32- Heittola R/ 42- Boffeli G/	01:03	5-3	2	4.7619	2	0	0	1	2.6596
2- Morgan C/ 13- Wetering S/ 14- Wright R/ 22- Wharton T/ 42- Boffeli G/	00:42	0-2	-2	0.0000	0	0	0	0	0.0000
0- McDermott M/ 4- Green E/ 13- Wetering S/ 14- Wright R/ 42- Boffeli G/	00:28	0-3	-3	0.0000	1	0	1	0	0.0000
2- Morgan C/ 13- Wetering S/ 14- Wright R/ 22- Wharton T/ 32- Heittola R/	00:02	0-0	0	0.0000	0	0	0	0	0.0000
2- Morgan C/ 4- Green E/ 13- Wetering S/ 24- Laube K/ 42- Boffeli G/	00:02	0-0	0	0.0000	0	0	0	0	0.0000
0- McDermott M/ 2- Morgan C/ 4- Green E/ 13- Wetering S/ 32- Heittola R/	00:01	3-0	3	180.0000	0	0	0	0	2.0833



UNI at Vanderbilt

11/25/23 South Point Arena, Las Vegas
2023-24 Women's Basketball

Officials: Bryan Enterline, Missy Brooks, Tommi Paris

Vanderbilt

Lineup	Time	Score	Score Diff	Pts/Min	Reb	Stl	Tov	Ass	PPP
3- Cambridge J/ 11- Oliver J/ 13- Pissott J/ 23- Moore I/ 35- Washington S/	10:00	15-13	2	1.5000	12	2	1	4	0.8601
3- Cambridge J/ 11- Oliver J/ 12- Pierre K/ 23- Moore I/ 24- Makurat A/	04:15	6-11	-5	1.4118	1	1	0	1	1.0000
3- Cambridge J/ 4- Greene M/ 12- Pierre K/ 13- Pissott J/ 24- Makurat A/	03:53	8-0	8	2.0601	3	3	1	2	1.3333
3- Cambridge J/ 4- Greene M/ 12- Pierre K/ 23- Moore I/ 35- Washington S/	03:41	5-3	2	1.3575	7	0	2	1	0.8503
3- Cambridge J/ 11- Oliver J/ 23- Moore I/ 24- Makurat A/ 35- Washington S/	03:17	4-7	-3	1.2183	2	0	3	0	0.8000
3- Cambridge J/ 4- Greene M/ 11- Oliver J/ 13- Pissott J/ 23- Moore I/	03:06	5-10	-5	1.6112	4	0	1	0	1.0246
3- Cambridge J/ 11- Oliver J/ 12- Pierre K/ 13- Pissott J/ 23- Moore I/	02:22	6-5	1	2.5352	0	2	0	2	1.5000
3- Cambridge J/ 4- Greene M/ 11- Oliver J/ 12- Pierre K/ 13- Pissott J/	01:57	6-5	1	3.0534	2	0	0	0	1.5464
3- Cambridge J/ 4- Greene M/ 11- Oliver J/ 12- Pierre K/ 24- Makurat A/	01:29	3-4	-1	2.0225	0	0	0	1	1.5000
3- Cambridge J/ 4- Greene M/ 12- Pierre K/ 13- Pissott J/ 23- Moore I/	00:58	0-0	0	0.0000	1	0	1	0	0.0000
3- Cambridge J/ 4- Greene M/ 13- Pissott J/ 23- Moore I/ 35- Washington S/	00:58	4-0	4	4.1379	0	3	0	2	1.3333
3- Cambridge J/ 4- Greene M/ 11- Oliver J/ 24- Makurat A/ 35- Washington S/	00:55	2-0	2	2.1818	1	1	1	1	1.0000
3- Cambridge J/ 11- Oliver J/ 12- Pierre K/ 13- Pissott J/ 21- LaChance B/	00:45	2-0	2	2.6608	2	0	0	1	2.0000
3- Cambridge J/ 4- Greene M/ 11- Oliver J/ 23- Moore I/ 35- Washington S/	00:42	0-0	0	0.0000	0	0	0	0	0.0000
4- Greene M/ 11- Oliver J/ 23- Moore I/ 24- Makurat A/ 35- Washington S/	00:30	0-0	0	0.0000	1	0	0	0	0.0000
3- Cambridge J/ 4- Greene M/ 11- Oliver J/ 12- Pierre K/ 23- Moore I/	00:29	1-3	-2	2.0548	2	0	0	0	1.1364
3- Cambridge J/ 4- Greene M/ 13- Pissott J/ 23- Moore I/ 24- Makurat A/	00:26	0-0	0	0.0000	1	0	0	0	0.0000
3- Cambridge J/ 4- Greene M/ 11- Oliver J/ 13- Pissott J/ 24- Makurat A/	00:12	0-2	-2	0.0000	0	0	0	0	0.0000
3- Cambridge J/ 4- Greene M/ 5- Allen R/ 13- Pissott J/ 23- Moore I/	00:02	1-0	1	22.2222	0	0	0	0	1.1364
3- Cambridge J/ 11- Oliver J/ 12- Pierre K/ 13- Pissott J/ 24- Makurat A/	00:00	0-1	-1	NaN	0	0	0	0	0.0000