



CRIMSON TIDE

BASKETBALL

11 NCAA TOURNAMENT APPEARANCES » 6 NCAA SWEET 16s » 1 NCAA FINAL FOUR » 6 ALL-AMERICANS



GAME 27



ALABAMA vs VANDERBILT

FEB. 27, 2022 / 2 P.M. CT / TUSCALOOSA, ALA.
COLEMAN COLISEUM (14,474)

TV: SEC NETWORK+

(Play-By-Play: Eli Gold, Analyst: Richard Hendrix)

RADIO: 100.1 FM

(Play-By-Play: Roger Hoover)

CRIMSON TIDE

2021-22 Record..... 14-12
2021-22 SEC Record..... 5-10
Head Coach..... Kristy Curry
Record at UA (Season)..... 147-130 (9th)
Career Record (Season)..... 456-279 (23rd)

COMMODORES

2021-22 Record..... 13-16
2021-22 SEC Record..... 1-11
Head Coach..... Shea Ralph
Record at School (Season)..... 13-18 (1st)
Career Record (Season)..... 13-18 (1st)

INSIDE THE SERIES

Overall: 53rd meeting (Vanderbilt leads, 34-18)

Series Notes: Vanderbilt leads Alabama in all-time meetings, 34-18, in a series that began in 1978. The Crimson Tide have won the last seven straight games against the Commodores. In the most previous matchup, Alabama defeated Vanderbilt, 77-71, in overtime on Feb. 6, 2021 in Nashville, Tenn. Brittany Davis and JaMya Mingo-Young scored 20-plus points apiece.

PROBABLE STARTERS



Megan Abrams
14.0ppg, 3.5rpg
13.6ppg, 3.5rpg

JaMya Mingo-Young
11.2ppg, 6.6rpg
11.2ppg, 6.8rpg

Hannah Barber
8.4ppg, 2.7apg
9.1ppg, 2.9rpg

Brittany Davis
17.0ppg, 7.1rpg
17.8ppg, 7.1rpg

Khyla Wade-Warren
4.7ppg, 2.1rpg
4.5ppg, 1.7rpg

(first row: season averages, second row: conference averages)

SOCIAL MEDIA:



Follow us on Twitter and
Instagram @AlabamaWBB



Like us on Facebook
at AlabamaWB

Follow **ALABAMA WOMEN'S BASKETBALL** on the social media sites listed for up-to-date news, exclusive content and more.

2021-22 SCHEDULE

NOVEMBER (6-2)

4	ALABAMA-HUNTSVILLE (EXH)		W, 87-41
9	CHARLESTON SOUTHERN	SEC Network+	W, 109-32
14	TULANE	SEC Network+	L, 69-66
17	SOUTHERN MISS	SEC Network+	W, 86-54
21	vs. Duke^	ESPN+	L, 74-71
24	MERCER	SEC Network+	W, 55-48
26	WESTERN CAROLINA	SEC Network+	W, 77-43
28	BETHUNE-COOKMAN	SEC Network	W, 89-45
30	MEMPHIS	SEC Network+	W, 71-44

DECEMBER (3-1)

3	HOUSTON	SEC Network+	W, 77-67
5	at Chattanooga	ESPN+	W, 80-64
13	SAM HOUSTON	SEC Network+	W, 84-50
16	at Little Rock!	ESPN+	Canceled
20	WINTHROP#	SEC Network+	Canceled
30	at No. 7/9 Tennessee*	SEC Network+	L, 62-44

JANUARY (2-6)

2	AUBURN*	SEC Network	W, 56-53
6	NR/RV MISSISSIPPI STATE*	SEC Network+	L, 65-62
9	at No. 15/14 Georgia*	SEC Network	L, 72-68
13	at RV/RV Ole Miss*	SEC Network+	L, 86-56
16	FLORIDA*	SEC Network+	L, 85-77
20	ARKANSAS*	SEC Network	L, 99-71
23	at Auburn*	ESPNU	W, 75-68
30	RV/NR MISSOURI*	SEC Network	L, 77-61

FEBRUARY (3-3)

3	at No. 1/1 South Carolina*	SEC Network	L, 83-51
6	at Vanderbilt*	SEC Network	W, 77-71 ^{OT}
13	KENTUCKY*	SEC Network	L, 67-63
17	No. 12/8 TENNESSEE*	SEC Network+	W, 74-64
20	at Texas A&M*	SEC Network	W, 81-79 ^{2OT}
24	at No. 8/8 LSU*	SEC Network+	L, 58-50
27	VANDERBILT*	SEC Network+	2 p.m.

MARCH

2-6	SEC Tournament%	TBD	TBD
-----	-----------------	-----	-----

^ Maggie Dixon Classic (Fort Worth, Texas)

! Canceled due to influenza in the Little Rock program

Canceled due to COVID-19 protocol in the Alabama program
% Nashville, Tenn.

* Southeastern Conference game

BOLD indicates home game

Rankings listed are AP/Coaches

2021-22 ALABAMA WOMEN'S BASKETBALL ROSTER

NUMERICAL

No.	Name	Pos.	Ht.	Cl.	Hometown (Previous School)
0	Ahriahna Grizzle	G	5-9	Jr.	Toronto, Ontario, Canada (Bill Crothers Secondary School)
1	Megan Abrams	G	5-9	Gr.	Lafayette, La. (Lafayette Christian Academy)
2	JaMya Mingo-Young	G	5-8	Jr.	Bogalusa, La. (Mississippi State)
3	Loyal McQueen*	G	5-8	So.	Florence, S.C. (Georgia Tech)
4	Taylor Sutton	G	5-4	Sr.	Atlanta, Ga. (Middle Tennessee)
5	Hannah Barber	G	5-6	Sr.	Homewood, Ala. (Homewood)
12	Allie Craig Cruce	F	6-1	Gr.	Killen, Ala. (Lauderdale County)
15	Myra Gordon	G/F	6-0	So.	Fort Worth, Texas (L.D. Bell)
23	Brittany Davis	G	5-9	Sr.	Manchester, Ga. (Gulf Coast State College)
31	Jada Rice	C	6-4	Gr.	Suwanee, Ga. (NC State)
33	Khyla Wade-Warren	F	6-2	So.	Selmer, Tenn. (Texas Tech)
45	Taylor Cullinan	F	6-3	Fr.	Dallas, Ga. (North Paulding HS)

ALPHABETICAL

No.	Name	Pos.	Ht.	Cl.	Hometown (Previous School)
1	Megan Abrams	G	5-9	Gr.	Lafayette, La. (Lafayette Christian Academy)
5	Hannah Barber	G	5-6	Sr.	Homewood, Ala. (Homewood)
12	Allie Craig Cruce	F	6-1	Gr.	Killen, Ala. (Lauderdale County)
45	Taylor Cullinan	F	6-3	Fr.	Dallas, Ga. (North Paulding HS)
23	Brittany Davis	G	5-9	Sr.	Manchester, Ga. (Gulf Coast State College)
15	Myra Gordon	G/F	6-0	So.	Fort Worth, Texas (L.D. Bell)
0	Ahriahna Grizzle	G	5-9	Jr.	Toronto, Ontario, Canada (Bill Crothers Secondary School)
3	Loyal McQueen*	G	5-8	So.	Florence, S.C. (Georgia Tech)
2	JaMya Mingo-Young	G	5-8	Jr.	Bogalusa, La. (Mississippi State)
31	Jada Rice	C	6-4	Gr.	Suwanee, Ga. (NC State)
4	Taylor Sutton	G	5-4	Sr.	Atlanta, Ga. (Middle Tennessee)
33	Khyla Wade-Warren	F	6-2	So.	Selmer, Tenn. (Texas Tech)

PRONUNCIATIONS

#0 **AHRIAHNA** Grizzle ah-ree-AH-nah
#2 **JAMYA** Mingo-Young juh-MY-uh
#12 Allie Craig **CRUCE** Kroose
#15 **MYRA** Gordon MY-ruh
#32 **NIA** Daniel knee-uh
#33 **KHYLA** Wade-Warren KIE-luh
#45 Taylor **CULLINAN** CULL-ih-nen

*Enrolled in January 2022, and will be eligible to play in fall of 2022

All 12 Alabama women's basketball players have eligibility to return for the 2022-23 season

BY THE NUMBERS

GRADUATE STUDENTS (3)

Allie Craig Cruce
Jada Rice
Megan Abrams

SENIORS (3)

Hannah Barber
Brittany Davis
Taylor Sutton

JUNIORS (2)

Ahriahna Grizzle
JaMya Mingo-Young

SOPHOMORES (3)

Myra Gordon
Loyal McQueen
Khyla Wade-Warren

FRESHMEN (1)

Taylor Cullinan

RETURNING LETTERWINNERS (7)

Megan Abrams
Hannah Barber
Allie Craig Cruce
Brittany Davis
Myra Gordon
Ahriahna Grizzle
Taylor Sutton

RETURNING STARTERS (2)

Megan Abrams
Hannah Barber

NEWCOMERS (5)

Taylor Cullinan
Loyal McQueen (Tr.)
JaMya Mingo-Young (Tr.)
Jada Rice (Tr.)
Khyla Wade-Warren (Tr.)

2021-22 RADIO & TELEVISION CHART



AHRIAHNA GRIZZLE

G Jr. • 5-9
Toronto, Canada
Bill Crothers Secondary School



MEGAN ABRAMS

G Gr. • 5-9
Lafayette, La.
Lafayette Christian Academy



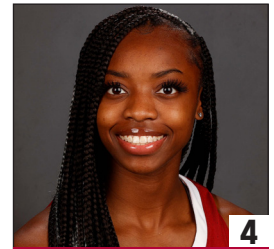
JAMYA MINGO-YOUNG

G Jr. • 5-8
Loranger, La.
Mississippi State



LOYAL McQUEEN

G So.. • 5-8
Florence, S.C.
Wilson HS



TAYLOR SUTTON

G Sr. • 5-4
Atlanta, Ga.
Middle Tennessee



HANNAH BARBER

G Sr. • 5-6
Homewood, Ala.
Homewood HS



ALLIE CRAIG CRUCE

F Gr. • 6-1
Killen, Ala.
Lauderdale County HS



MYRA GORDON

G/F So. • 6-0
Fort Worth, Texas
L.D. Bell HS



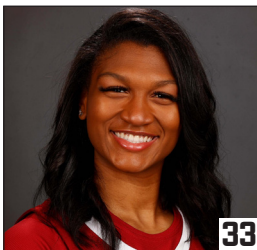
BRITTANY DAVIS

G Sr. • 5-9
Manchester, Ga.
Gulf Coast State College



JADA RICE

C Gr. • 6-4
Suwanee, Ga.
NC State



KHYLLA WADE-WARREN

F So. • 6-2
Selmer, Tenn.
Texas Tech



TAYLOR CULLINAN

F Fr. • 6-3
Dallas, Ga.
North Paulding HS



KRISTY CURRY
HEAD COACH (9TH SEASON)

Northeast Louisiana, 1988
Stephen F. Austin, 1994



KELLY CURRY
ASSISTANT COACH (9TH SEASON)

Texas A&M, 1990
Stephen F. Austin, 1993



JANESE CONSTANTINE
ASSISTANT COACH (2ND SEASON)

Wisconsin, 2008



ROMAN TUBNER
ASSISTANT COACH (1ST SEASON)

Centenary College, 2011



BRIAN JOHNSON
DIRECTOR OF OPERATIONS (6TH SEASON)

Tennessee, 2016

HEAD COACH KRISTY CURRY

UNIVERSITY OF ALABAMA, HEAD COACH, 2013-PRESENT

Year	Record	Pct.	SEC Record	Pct.	Postseason
2013-14	14-16	.467	7-9	.438	
2014-15	13-19	.406	2-14	.125	
2015-16	15-16	.484	4-12	.250	WNIT First Round
2016-17	22-14	.611	5-11	.313	WNIT Quarterfinals
2017-18	20-14	.588	7-9	.438	WNIT Quarterfinals
2018-19	14-17	.452	5-11	.313	
2019-20	18-12	.600	8-8	.500	N/A due to COVID-19
2020-21	17-10	.630	8-8	.500	NCAA Second Round
2021-22	14-12	.538	5-10	.333	
Total (9)	147-130	.531	51-92	.357	

TEXAS TECH UNIVERSITY, HEAD COACH, 2006-13

Year	Record	Pct.	Big 12 Record	Pct.	Postseason
2006-07	15-16	.484	6-10	.375	
2007-08	17-16	.515	4-12	.250	WNIT Third Round
2008-09	16-15	.516	6-10	.375	
2009-10	18-15	.545	5-11	.313	WNIT Second Round
2010-11	22-11	.667	8-8	.500	NCAA First Round
2011-12	21-14	.600	6-12	.333	WNIT Third Round
2012-13	21-11	.656	11-7	.611	NCAA First Round
Total (7)	130-98	.570	46-70	.397	

PURDUE UNIVERSITY, HEAD COACH, 1999-2006

Year	Record	Pct.	Big Ten Record	Pct.	Postseason
1999-00	23-8	.742	11-5	.688	NCAA Second Round
2000-01	31-7	.816	14-2	.875	NCAA Runner Up
2001-02	24-6	.800	13-3	.813	NCAA Second Round
2002-03	29-6	.829	12-4	.750	NCAA Elite Eight
2003-04	29-4	.879	14-2	.875	NCAA Sweet 16
2004-05	17-13	.567	9-7	.563	NCAA Second Round
2005-06	26-7	.788	13-3	.813	NCAA Sweet 16
Total (7)	179-51	.778	86-26	.768	
CAREER (23)	456-279	.621	192-188	.505	

COACHING HIGHLIGHTS

- **OVER 450 CAREER WINS**
- **10 NCAA TOURNAMENT APPEARANCES**
- **ONE NCAA FINAL FOUR**
- **TWO NCAA ELITE EIGHTS**
- **FOUR NCAA SWEET 16S**
- **SIX WNIT APPEARANCES**
- **TWO BIG TEN REGULAR-SEASON TITLES**
- **11 20-WIN SEASONS**
- **1 OF 10 COACHES IN WOMEN'S BASKETBALL HISTORY TO HAVE 100+ WINS AT THREE DIFFERENT SCHOOLS**



ABOUT ALABAMA

- Alabama will return home to host Vanderbilt Sunday, Feb. 27 at 2 p.m. CT in Coleman Coliseum for senior day.
- The Crimson Tide is 14-12 this season.
 - The Tide is 5-10 in the Southeastern Conference.
 - The Tide is 2-5 in SEC home games.
 - The Tide has won three of the last five games.
- Alabama is coming off a 58-50 loss at No. 8/8 LSU Thursday, Feb. 24 in Baton Rouge, La.
 - It snapped the Crimson Tide's two-game win streak.
- In SEC games, the Crimson Tide is shooting 38.3 percent from the field and 32.5 percent from long range, averaging 64.4 points per game.
 - In conference action, the Tide is holding its opponents to shooting 45.2 percent from the field and 30.5 percent from long range, averaging 72.6 points per game.
- In SEC games, three players are averaging double-figure scoring in Brittany Davis (17.8), Megan Abrams (13.6) and JaMya Mingo-Young (11.2).
 - Overall this season, Davis is fifth in the conference in points per game (17.0) and final points (441).
 - Both Davis and Hannah Barber are ranked in the SEC top five in three-point field goals per game (2.65 and 2.24, respectively).
- In SEC games, Brittany Davis also leads the team in rebound average (7.1), followed closely by JaMya Mingo-Young (6.8).
- Khyla Wade-Warren has made five straight starts after coming off the bench all season.

ABOUT VANDERBILT

- Vanderbilt is 13-16, including 4-11 in the SEC and 0-7 in SEC road games.
 - The Commodores are coming off a 63-59 loss to then No. 15/21 Florida last Thursday in Nashville, Tenn.
 - Vanderbilt had four players score in double digits, including Sacha Washington's double-double on 16 points and 11 rebounds. The Commodores scored an impressive 28 points off the Gators' 28 turnovers.
- In SEC games, Vanderbilt is shooting 37.6 percent from the field and 28.8 percent from long range, averaging 58.1 points per game.
 - In conference action, the Commodores are holding its opponents to shooting 45.9 percent from the field and 30.9 percent from long range, averaging 67.8 points per game.
- In SEC games, three players are averaging double-figure scoring in Brinae Alexander (15.8), Iyana Moore (12.7) and Jordyn Cambridge (10.1).
 - In conference action, Sacha Washington is leading the team in rebounding average (6.7).
- Overall this season, Vanderbilt leads the conference in steals (312), steals per game (10.8) and turnovers forced (19.6).
 - Overall this season, Jordyn Cambridge leads the SEC in steals (108) and steals per game (4.0). Iyana Moore is ranked fourth in the league in three-point field goals made (60).

EARLIER THIS SEASON...

- Alabama women's basketball defeated Vanderbilt, 77-71, on the road in overtime, Sunday, Feb. 6. Two Crimson Tide players eclipsed 20 points in the same game for the second time this season, as Brittany Davis paced the team with 25 points (9-of-17) and JaMya Mingo-Young added 20 points (5-of-11). Megan Abrams tacked on 14 points, four off the glass, dished out three assists and made a trio of steals.
- Alabama shot 55.1 percent, a season high, on 27-of-49 from the field, knocking down seven three-point field goals and 16 of its 25 attempts at the line. Vanderbilt had one more make and nearly 20 more attempts, shooting 41.2 percent on 28-of-68 from the field, making four three-point field goals and 11 of its 21 attempts at the stripe. The Crimson Tide collected just 29 rebounds, compared to the Commodores' 41. Alabama committed 17 turnovers and Vanderbilt committed 15 turnovers, while the Tide outscored the Commodores, 19-14, off those miscues.

QUICK FACTS

UNIVERSITY INFORMATION

Location	Tuscaloosa, Ala.
Enrollment	38,320
Founded	April 12, 1831
Nickname	Crimson Tide
Colors	Crimson and White
Conference	Southeastern
President	Dr. Stuart Bell
Director of Athletics	Greg Byrne
Senior Woman Administrator	Tiffini Grimes
Faculty Representative	Dr. James King
Facility	Coleman Coliseum
Capacity	14,474

COACHING STAFF

Head Coach Kristy Curry

Alma Mater	Northeast Louisiana, 1988
	Stephen F. Austin, 1994
Record at Alabama	147-130 (.531)
SEC Record	51-92 (.357)
Overall Record	456-279 (.621)
Season at Alabama in 2021-22	9th
Season Overall in 2021-22	23rd

Assistant Coach Kelly Curry

Alma Mater	Texas A&M, 1990
Season at Alabama in 2021-22	9th

Assistant Coach Janese Constantine

Alma Mater	Wisconsin, 2008
Season at Alabama in 2021-22	2nd

Assistant Coach Roman Tubner

Alma Mater	Centenary College, 2011
Season at Alabama in 2021-22	1st

Director of Operations Brian Johnson

Alma Mater	Tennessee, 2016
Season at Alabama in 2021-22	6th

TEAM INFORMATION

2020-21 Overall Record	17-10
2020-21 SEC Record	8-8
SEC Finish	7th
Postseason	SEC Tournament Quarterfinals
	NCAA Tournament Second Round
Starters R/L	2/3
Letterwinners R/L	7/6
Newcomers	5
All-Time Record	805-626 (.563)
SEC Record	185-333 (.357)
Home Record	412-203 (.670)
Coleman Coliseum Record	341-160 (.681)
Foster Auditorium Record	71-43 (.623)
First Season	1974
NCAA Appearances	10 (1984, 1988, 1992-99, 2021)
NCAA Record	17-11 (.608)
WNIT Appearances	7 (2000-02, 2011, 2016-18)
WNIT Record	11-7 (.611)

ATHLETICS COMMUNICATIONS

WBB Contact	Camiran "Cami" Moore
E-mail	cmmoore@ia.ua.edu
Cell Phone	(859) 396-0368
Mailing Address	Box 870391
	Tuscaloosa, AL 35487

SPECIALTY STATS

	PTS OFF				
	Paint	T/O	2ndCh	FastB	Bench
Alabama	62	40	20	25	53
Charleston Southern	12	4	2	0	5
Alabama	18	21	8	8	5
Tulane	30	13	17	7	9
Alabama	44	27	21	29	22
Southern Miss	36	12	14	8	17
Alabama	30	22	19	8	12
vs. Duke	28	16	8	16	16
Alabama	22	15	7	12	8
Mercer	18	8	6	6	7
Alabama	26	25	11	21	32
Western Carolina	20	8	7	4	34
Alabama	50	30	16	24	43
Bethune-Cookman	16	12	9	5	14
Alabama	38	15	17	8	8
Memphis	20	9	4	8	17
Alabama	34	14	8	13	5
Houston	42	17	9	16	26
Alabama	52	21	16	15	25
at Chattanooga	24	11	11	4	12
Alabama	44	21	12	25	21
Sam Houston	38	9	11	8	5
Alabama	Canceled				
at Little Rock	Canceled				
Alabama	Canceled				
Winthrop					
Alabama	16	15	6	6	9
at No. 7/9 Tennessee	34	10	14	11	15
Alabama	26	15	11	9	12
Auburn	24	5	8	9	3
Alabama	22	18	8	4	4
NR/RV Mississippi State	40	20	8	16	3
Alabama	12	23	13	4	18
at No. 15/14 Georgia	42	22	14	13	19
Alabama	22	11	4	8	14
at RV/RV Ole Miss	30	26	11	20	41
Alabama	44	16	12	13	10
Florida	42	18	17	10	27
Alabama	34	20	15	7	15
Arkansas	38	23	11	11	21
Alabama	28	18	17	4	30
at Auburn	38	16	21	8	19
Alabama	32	13	15	3	5
RV/NR Missouri	32	17	6	4	25
Alabama	24	12	11	10	10
at No. 1/1 South Carolina	54	8	17	22	32
Alabama	38	19	6	19	6
at Vanderbilt	38	14	18	8	22
Alabama	34	10	8	5	9
Kentucky	34	18	17	15	39
Alabama	26	17	12	9	2
No. 12/8 Tennessee	34	12	16	13	17
Alabama	36	14	11	8	2
at Texas A&M	42	19	19	8	21
Alabama	12	12	7	2	0
at No. 8/8 LSU	36	14	9	8	8
Alabama					
Vanderbilt					

Noncon. Alabama Totals	420	251	155	188	234
Noncon. Average/Game	38.2	22.8	14.1	17.1	21.3
Noncon. Opponent Totals	284	119	98	82	162
Noncon. Average/Game	25.8	10.8	8.9	7.5	14.2
SEC Alabama Totals	406	233	156	111	146
SEC Average/Game	27.1	15.5	10.4	7.4	9.7
SEC Opponent Totals	558	242	206	176	312
SEC Average/Game	37.2	16.1	13.7	11.7	20.8
Alabama Totals	826	484	311	299	380
Average/Game	31.8	18.6	12.0	11.6	14.6
Opponent Totals	842	361	304	258	474
Average/Game	32.4	13.8	11.7	9.9	18.2

LAST TIME OUT: ALABAMA FALLS AT NO. 8/8 LSU

- Despite cutting the Tigers' lead to just three points at the beginning of the fourth quarter, the University of Alabama women's basketball team dropped to No. 8/8 LSU, 58-50, Thursday, Feb. 24 in the Pete Maravich Assembly Center. The Crimson Tide fell to 14-12 (5-10), while the Tigers improved to 24-4 (12-3) in 2021-22.
- Brittany Davis led in scoring for the second straight game, while earning her fifth double-double on 18 points, including four three-point field goals, and 11 rebounds. She added one assist to her stat line in 39 minutes of action. Megan Abrams tacked on 16 points, including nine points in the third quarter, while also recording four rebounds, one block and one assist in her home state of Louisiana.
- Hannah Barber improved her streak of 36 straight games scoring a three-point field goal, as the senior had 11 points, four rebounds and three assists. Despite playing through some foul trouble in the second half, also in her home state of Louisiana, JaMya Mingo-Young covered the floor on six rebounds, three assists, three steals, two points and a block.
- The Crimson Tide managed to cut it to a one possession game after Abrams began the fourth quarter with back-to-back scores for a personal 5-0 run. However, the Tigers would go on an 11-0 run for themselves that sealed their eventual triumph. Alabama shot 34.0 percent from the field on 18-of-53 shooting, while LSU shot 43.9 percent from the field on 25-of-57 shooting.
- The Crimson Tide made 11 three-point field goals, the second straight game it eclipsed double digits.

AS SEEN ON TV

- The Crimson Tide is eager to return to a traditional schedule for the 2021-22 season, boasting a competitive 13-game, regular-season schedule, paired with a rigorous 16-game conference schedule. Alabama's nonconference schedule features 10 home games, two road games and a neutral-site matchup against Duke at the Maggie Dixon Classic in Fort Worth, Texas, Nov. 21. Its SEC schedule includes eight home games and eight road games.
- The ESPN family of networks assigned Alabama to 10 national slots for the upcoming season, includes the Alabama at South Carolina matchup on Feb. 3, 2022 that was elevated from SEC Network Plus to SEC Network.

BACK IN COLEMAN COLISEUM

- Alabama is playing inside historic Coleman Coliseum for the sixth straight season.
- Women's basketball played 35 games in Foster from 1975-81, splitting time between Foster Auditorium and the main floor of Coleman Coliseum, until permanently moving to Coleman Coliseum from 1981-2011. Following the completion of the renovation, women's basketball played its final three home games of the 2010-11 season in Foster before its first complete season in the building during the 2011-12 campaign. All but four of its home games, which includes two season-opening doubleheaders with men's basketball and a pair of 5th Grade Fastbreak games, were played at Foster Auditorium from 2011-16.

HEAD OVER HEELS: WOMEN'S BASKETBALL LEADERSHIP AWARD

- The University of Alabama women's basketball program and head coach Kristy Curry are pleased to recognize women for their servant leadership in the greater Tuscaloosa area at center court at every home game in 2021-22.
- Recipients of the Head Over Heels Alabama Women's Basketball Leadership Award are admired for their infectious and generous nature, impactful influence in their communities and commitment to the stewardship of aspiring female leaders.

WELCOME BACK, WELCOME BACK, WELCOME BACK

- Head coach Kristy Curry returns for her ninth season at the helm of the Crimson Tide, alongside assistant coaches Kelly Curry (ninth season), Janese Constantine (second season) and Roman Tubner (first season).
- This season, Alabama's 11-person active roster includes seven returners, including two senior starters in Megan Abrams and Hannah Barber, and welcomed four newcomers, including three transfers, all from Power 5 programs, and one freshman.
- Abrams ranked second on the team with 26 steals and third on the team with 118 rebounds.
- Barber returned as last season's assists leader with 107, while she ranked third on the team in steals with 21.
- Both Abrams and Barber were solid from long range, shooting 35.1 percent and 31.7 percent from beyond the arc, respectively, while they averaged 8.1 and 6.0 points per game.
- Brittany Davis returns to the court after taking a year hiatus in 2020-21. Just two seasons ago, the then-sophomore played in all 30 contests, averaging 6.6 points per game and 2.0 rebounds per game off the bench. She was named Southeastern Conference Player of the Week and College Sports Madness National Player of the Week that season after recording 23 points on 10-of-12 shooting to pair with five rebounds in a win over North Carolina on Dec. 15, 2019.

OFFSEASON PREPARATION

- The program attended a three-day, two-night retreat at True Vine Foundation in Eutaw, Alabama, in mid-September. The team participated in a number of activities designed to build communication and problem-solving skills as a group, including tugging a tractor down an abandoned airplane strip, using canoes to rescue a dummy across a pond, working together to lug logs, sand bags and containers through trails, navigating a ropes course, fireside chats and more.
- The Alabama women's basketball team read two books over the summer, "Stick Together" and "The No Complaining Rule," both by Jon Gordon. Led by Kelly Curry, the team was assigned several chapters at a time, before grouping together prior to summer sessions to discuss what they read.

A LOOK BACK

- The program is coming off a pair of its most successful seasons in more than two decades. Despite operating within the confines of the COVID-19 pandemic, Alabama put together a 17-10 record in 2020-21, posting its fewest losses since going 24-10 in 1997-98. The Crimson Tide also won eight league games for the second season in a row, a feat that has not been achieved since 1996-97 – 1997-98.
- Alabama got off to a hot start in SEC action after winning five of its first seven SEC games for the first time since 1997-98, including a ranked triumph at No. 14 Mississippi State on Jan. 14 (86-78). UA concluded the season ranked first in the league in free-throw percentage (75.4) and second in the league in 3-pointers (224) and 3-pointers per game (8.3).
- To conclude a historic season for the Crimson Tide, Jasmine Walker was selected as the seventh pick in the first round of the 2021 WNBA Draft by the Los Angeles Sparks. The standout forward became the first Alabama women's basketball player to be drafted since 2005, while she was just the second to go in the first round behind Tausha Mills.
 - Walker tore her right ACL in the spring
 - She underwent surgery in mid-June and is in the process of making a full recovery

NEW FACES, NEW PLACES

- Kristy Curry hired a stud of an assistant coach and recruiting coordinator in Roman Tubner Tuesday, Aug. 31. He came to Alabama from Ball State with 10 years of coaching experience in women's college basketball.
 - Named a 2019 Women's Basketball Coaches Association 30-under-30 selection
 - Born and raised in Montgomery, Alabama
- Over the summer, Kristy Curry also hired two additional support staff:
 - Alabama women's basketball's own strength and conditioning coach Ashleigh Beaver, marking the first time the women's basketball program has hired its own strength and conditioning coach, hired exclusively for the development of the program
 - Alabama women's basketball's own director of video and creative content Matt Wise, who is also the son of famed Florida women's volleyball head coach Mary Wise

SEC STANDINGS

TEAM	OVERALL	SEC
South Carolina [^]	25-1	14-1
LSU	23-4	12-3
Tennessee	21-6	11-4
Ole Miss	21-6	10-5
Florida	20-7	10-5
Georgia	18-8	8-7
Kentucky	13-11	7-8
Arkansas	16-11	6-9
Mississippi State	15-11	6-9
Missouri	17-10	6-9
ALABAMA	14-11	5-10
Texas A&M	14-12	4-11
Vanderbilt	12-16	4-11
Auburn	10-15	2-13

[^]SEC Champion

HOME & AWAY BREAKDOWN

CATEGORY	HOME	AWAY
Points Per Game	73.6	64.7
Opponent PPG	60.1	71.4
Field goal percentage	.425	.382
Opponent FG%	.382	.446
3-point percentage	.326	.317
Opponent 3-point%	.300	.268
Free throw percentage	.726	.684
Opponent FT%	.623	.658
Rebounds per game	40.4	35.0
Opponent RPG	37.6	40.3
Assists per game	12.3	9.0
Opponent APG	11.3	15.8
Steals per game	9.8	7.3
Opponent SPG	8.1	6.6
Turnovers per game	14.7	15.2
Opponent TO PG	17.4	14.2

POINTS BY QUARTER

HOME	1ST	2ND	3RD	4TH	OT
Alabama	300	265	318	295	0
Opponents	245	193	249	275	0
AWAY	1ST	2ND	3RD	4TH	OT
Alabama	137	119	157	140	29
Opponents	173	133	147	169	21

ALABAMA'S RECORD WHEN...

At home	10-6
On the road.....	4-5
At a neutral site.....	0-1
Against a top 25 opponent.....	1-4
Against a top 15 opponent.....	1-4
Against a top 10 opponent.....	0-3
Against a top 5 opponent.....	0-1
In tournaments.....	0-1
On television.....	5-5
In white uniforms	11-6
In crimson uniforms.....	3-5
In white/pink uniforms.....	0-1
On Sunday	6-6
On Monday	1-0
On Tuesday.....	2-0
On Wednesday	2-0
On Thursday.....	1-6
On Friday.....	2-0
On Saturday.....	0-0
Day Games (before 5 p.m.).....	7-5
Night Games (after 5 p.m.).....	7-7
Overtime Games	2-0
Leading at the half	10-4
Trailing at the half	2-8
Tied at the half	2-0
Outrebounding opponent	10-4
Opponent outrebounds Alabama	3-8
Equal rebounds	1-0
FG% equal/over .500.....	3-0
FG% equal/over .400.....	12-4
FG% below .400.....	2-8
Opponent FG% equal/over .400	2-11
Opponent FG% below .400.....	12-1
Alabama has more turnovers.....	2-7
Opponent has more turnovers	11-4
Teams have equal turnovers.....	1-1
Scoring below 50 points.....	0-1
Scoring 50-59 points.....	2-3
Scoring 60-69 points	0-5
Scoring 70-79 points	6-3
Scoring 80-89 points	5-0
Scoring 90-99 points	0-0
Scoring 100+ points	1-0
Two or less players score in double figures.....	3-6
At least three players score in double figures.....	11-6
At least four players score in double figures	7-31
At least five players score in double figures	3-0
When leading after 3rd period.....	12-3
When leading w/ 5 minutes left	13-4
When trailing after 3rd period	1-9
When trailing w/ 5 minutes left	1-8
When tied after 3rd period	1-0
When tied w/ 5 minutes left.....	0-0

SIGNING KARLY WEATHERS

- The University of Alabama women's basketball program inked a dynamic combo guard for its incoming class during the early signing period on Nov. 10. Karly Weathers of Loretto, Tennessee, will join the Crimson Tide in the fall of 2022.
- Karly Weathers, a 5-11 guard has been a varsity starter throughout her high school career at Loretto High School, under the leadership of Ashley Rutledge, where she was named the 2021 Class A Miss Tennessee Basketball. She also plays on the Alabama Southern Starz – NIKE EYBL circuit under the guidance of Doug Bush.
- Ranked No. 83 overall in the class of 2022, according to the Junior All-Star Report, Weathers was a three-time Tennessee Class A First Team selection in 2019, 2020 and 2021. Last season, the then-junior averaged 22.4 points per game, en route to helping her team win the 2021 Class A State Championship. As a sophomore, Weathers averaged 18.8 points a game, and as a freshman, she averaged 21.3 points per game.
- Beyond the basketball court, Weathers is also a middle hitter on her high school volleyball team. She earned three nods on the Tennessee Class A First Team in 2019, 2020 and 2021 for her performance on the volleyball court, while also helping her team to the 2020 Tennessee Sports Writers Association Class A State Runner Up.
- In Case You Missed It:** Weathers has been named one of three finalists for 2022 Class 2A Miss Tennessee Basketball.

LOYAL TO ALABAMA

- Loyal McQueen, who was a four-star recruit and the top ranked guard out of South Carolina in the class of 2020, according to ESPN.com, has announced she will transfer to the University of Alabama and enroll in classes next spring and be eligible to compete next fall.
- McQueen played in 25 games, making 21 starts, as a freshman at Georgia Tech last season. She averaged 8.8 points per game, while shooting a team-best 36.8 percent from long range. She also dished out 2.16 assists per game in 2020-21. McQueen tabbed Atlantic Coast Conference Freshman of the Week honors on Dec. 14, 2020 after helping the Yellow Jackets jump out to a 2-0 start in league action, recording five straight games in double figures.
- Perhaps her best game of the season came against Clemson on Feb. 4, 2021, leading the team to a triumph on 17 points and seven assists. She followed up that performance, logging 14 points and six assists against top-ranked Louisville on Feb. 11, 2021. McQueen helped lead the Yellow Jackets to the 2021 NCAA Sweet 16, where she recorded a combined 19 points in her rookie stint at the tournament.
- The explosive and athletic guard played five seasons at Wilson High School, capping her high school career being named the 2019-20 South Carolina Gatorade Player of the Year, 2019-20 South Carolina Miss Basketball, 2019-20 South Carolina Basketball Coaches Association 4A Player of the Year, 2019-20 Max Preps South Carolina Player of the Year and 2019-20 USA Today Southeast Player of the Year.
- She averaged 20.4 points per game, 6.1 assists per game, 4.6 rebounds per game and 2.6 steals per game in five seasons (110 games) at Wilson High School. In her senior season, she eclipsed 2,000 career points (2,252). McQueen had six 30-point games, including a 51-point game, which featured 11 3-pointers, that season.
- McQueen is the daughter of Derrick and Hope and the sister of London. Her father is a four-year letterwinner on the Wake Forest men's basketball team.
- Due to NCAA transfer rules, McQueen will sit out in the spring of 2022 and be eligible to compete at the start of the 2022-23 season. McQueen is expected to join the team following the holiday break, and she will be eligible to practice with the Crimson Tide immediately.

SMART & TALENTED

- Three Alabama student-athletes are playing with undergraduate degrees and are currently working on their Masters, while two of those student-athletes earned their undergraduate degrees right here at the Capstone.
 - Jada Rice earned her undergraduate degree in political science in May 2021 from NC State and is currently working on her Masters in public administration.
 - Allie Craig Cruce earned her undergraduate degree in communication studies in August 2021 from Alabama and is currently working on her Masters in business marketing.
 - Most recently, Megan Abrams earned her undergraduate degree in finance and economics in December 2021 from Alabama and is currently working on her Masters in business management.

NEW COMPETITION ARENA, SAY WHAT?

- Alabama Athletics has formally proposed moving forward with phase II of The Crimson Standard Initiative, which includes a new competition arena for basketball and gymnastics as well as a practice facility for the golf programs, Feb. 3, 2022.
- The Crimson Standard, unveiled in 2018, is Alabama Athletics' 10-year, \$600 million capital initiative created to comprehensively elevate the student-athlete experience, recruiting efforts and the overall game-day experience for all Crimson Tide fans. To date, over \$470 million has been raised for The Crimson Standard Initiative.
- The new arena is projected to seat over 10,000 and designed to bring fans closer to the action on the court. Arena features would include student seating around the majority of the lower bowl in addition to new premium options in club, loge, courtside and lower-level preferred seating.
- Coleman Coliseum will continue to serve as the day-to-day practice and preparation site for the programs and will also continue to house the multiple departments currently located within the building.



ROAD WIN = ICE CREAM

- Alabama always gets ice cream after road wins (...and not the cheap stuff, we get fancy with the Marble Slab, Cold Stone and famous local shops).

NO GAME? NO PROBLEM!

- The Crimson Tide women's basketball team was scheduled to travel to Little Rock, Ark., to square off against Little Rock on Dec. 16. The trojans canceled the contest because of an influenza outbreak within their program, leaving the Tide with a couple extra days on its hands.
- Head coach Kristy Curry called Gabby Little, Alabama's Coordinator Administration Social Responsibility and Engagement, in search of a volunteer opportunity to fill the program's vacant time and the West Alabama Food Bank answered the ring.
- On the morning of Dec. 16, the Crimson Tide packed more than 100 boxes of non-perishables to be delivered to families in need in the greater Tuscaloosa area, stacked and transported boxes and broke down boxes. Kristy Curry explained she wanted the student-athletes to fill their extra time with something that would not only benefit others, but their own personal growth.

800 WINS

- Alabama achieved its 800th program win after defeating Sam Houston, 84-50, Dec. 13 inside Coleman Coliseum in front of 1,700 students and teachers for the annual Fifth Grade Fastbreak event.

20-POINT SCORING GAMES

BRITTANY DAVIS

25	Charleston Southern	11/9/21
23	Southern Miss	11/17/21
20	at RV/RV Ole Miss	1/13/22
20	Arkansas	1/20/22
24	at Auburn	1/23/22
20	at No. 1/1 South Carolina	2/3/22
25	at Vanderbilt	2/6/22
23	Tennessee	2/17/22
32	at Texas A&M	2/20/22

MEGAN ABRAMS

21	Tulane	11/14/21
27	vs. Duke	11/21/21
23	Houston	12/3/21
21	Sam Houston	12/13/21
22	Florida	1/16/22
21	Kentucky	2/13/22
27	Tennessee	2/17/22
26	Texas A&M	2/20/22

JAMYA MINGO-YOUNG

26	at Chattanooga	12/5/21
22	Arkansas	1/20/22
20	at Vanderbilt	2/6/22

DOUBLE-DOUBLE TRACKER

JAMYA MINGO-YOUNG

Southern Miss	11/17/21	12 pts, 12 rbs
at Chattanooga	12/05/21	26 pts, 11 rbs
Sam Houston	12/13/21	15 pts, 11 rbs
Kentucky	2/13/22	16 pts, 10 rbs
at Texas A&M	2/20/22	11 pts, 10 rbs

BRITTANY DAVIS

Charleston Southern	11/9/21	25 pts, 12 rbs
Southern Miss	11/17/21	23 pts, 11 rbs
Auburn	1/2/22	10 pts, 11 rbs
Florida	1/16/22	19 pts, 10 rbs
at LSU	2/24/22	18 pts, 11 rbs

JADA RICE

Memphis	11/30/21	13 pts, 11 rbs
---------	----------	----------------

2021-22 ALABAMA INDIVIDUAL HIGHS

Points	32, Brittany Davis at Texas A&M (2/20)
FG Made	12, Brittany Davis at Texas A&M (2/20)
FG Attempts	26, Brittany Davis at Texas A&M (2/20)
FG Percentage (min. 5 made)778 (7-of-9), Khyla Wade-Warren vs. Charleston Southern (11/9)
3PFG Made	7, Brittany Davis at Texas A&M (2/20)
3PFG Attempts	15, Brittany Davis at Texas A&M (2/20)
3PFG Percentage (min. 2 made)800 (4-of-5), Hannah Barber at Georgia (1/9)
FT Made	10, JaMya Mingo-Young at Vanderbilt (2/6)
FT Attempts	14, JaMya Mingo-Young at Vanderbilt (2/6)
FT Percentage (min. 3 made)	1.000 (7-of-7) Megan Abrams vs. Tennessee (2/17)
Rebounds	12, JaMya Mingo-Young vs. Southern Miss (11/17), Brittany Davis vs. Charleston Southern (11/9)
Assists	6, Taylor Sutton vs. Bethune-Cookman (11/28), Hannah Barber vs. Mercer (11/24)
Steals	6, JaMya Mingo-Young vs. Tulane (11/14), at Vanderbilt (2/6), vs. Tennessee (2/17)
Blocks	8, Jada Rice vs. Sam Houston (12/13)
Turnovers	6, Taylor Sutton vs. Houston (12/3)
Fouls	6, Jada Rice vs. Auburn (1/2)

2021-22 ALABAMA TEAM HIGHS

Points	109 vs. Charleston Southern (11/9)
FG Made	39 vs. Charleston Southern (11/9)
FG Attempts	79 vs. Charleston Southern (11/9)
FG Percentage551 (27-of-49) at Vanderbilt (2/6)
3PFG Made	14 at Georgia (1/9)
3PFG Attempts	32 vs. Tulane (11/14)
3PFG Percentage560 (14-of-25) at Georgia (1/9)
FT Made	24 at Auburn (1/23)
FT Attempts	33 at Auburn (1/23)
FT Percentage929 (13-of-14) Kentucky (2/13)
Rebounds	53 vs. Bethune-Cookman (11/28), Charleston Southern (11/9)
Assists	19 vs. Charleston Southern (11/9)
Steals	18 vs. Bethune-Cookman (11/28)
Blocks	11 vs. Sam Houston (12/13)
Turnovers	23 vs. Houston (12/3)
Fouls	24 vs. Duke (11/21)

ALABAMA IN THE SEC & NCAA

Alabama's collective performances this season are highly ranked among its foes' performances in both the Southeastern Conference and the nation.

Alabama in the Southeastern Conference Top Six and the NCAA Top 100 (as of Feb. 25)

SEC	NCAA	Category	Value
3	46	Three-Point Field Goals Per Game	7.7
3	47	Three-Point Field Goals Made	199
3	86	Three-Point Field-Goal Percentage	32.8
4		Free-Throw Percentage	71.2
4	82	Three-Point Field-Goal Defense	28.8
5		Fewest Turnovers	388
5	84	Steals Per Game	9.0
6	57	Free Throws Made	348

WE DON'T MAKE IT EASY

- Of Alabama's 12 losses this season...
 - Seven of the 12 losses were by eight points or less.
 - Five of the 12 losses were by four points or less.
 - In five of the 12 losses, Alabama led its opponent under five minutes in the fourth quarter.
 - In six of the 12 losses, Alabama led its opponent in the fourth quarter.
 - In seven of the 12 losses, Alabama led its opponent in the final 13 minutes of the game.
 - In four of the 12 losses, Alabama led its opponent for majority of the game.

WHEN YOUR NAME GETS CALLED...

- Eight of 12 players that have seen time on the court have recorded double-digit points in multiple games this season.
 - Three of 12 players that have seen time on the court have recorded double-digit points in more than 50.0 percent of their games, including Brittany Davis (24-of-26), Megan Abrams (16-of-26) and JaMya Mingo-Young (14-of-26).
- Three different players have recorded multiple 20-point scoring games, including Brittany Davis (8), Megan Abrams (7) and JaMya Mingo-Young (3).

THREE FOR ME

- Alabama has had eight games this season posting 10-or-more 3-pointers, including six games in Southeastern Conference action.
 - The Tide has eclipsed double-digit, three-point field goals in the last three straight games (against then-No. 12/8 Tennessee on Feb. 17, at Texas A&M on Feb. 20 and at then-No. 8/8 LSU on Feb. 24).
- The Crimson Tide featured a season-best 14 3-pointers at then-No. 15/14 Georgia on Jan. 9, which is one shy of the program record (15 vs. Auburn, Feb. 14, 2021).
 - In fact, Brittany Davis alone went 6-of-6 from long range going into halftime at the Bulldogs.
- UA is currently third in the Southeastern Conference in three-point field goals per game (7.7), three-point field-goal percentage (32.8) and three-point field goals made (199).
- Brittany Davis (69) and Hannah Barber (56) have taken turns leading the effort from the arc all season.
 - Both Davis and Hannah Barber are ranked in the SEC top five in three-point field goals per game (2.7 and 2.2, respectively).
- Chances are, you'll likely even catch one of our bigs, Khyla Wade-Warren, attempt one (...or two, or three) from long range.
 - The sophomore transfer from Texas Tech has attempted a 3-pointer in 10 of 15 SEC games this season, knocking down a 3-pointer in three straight (at then-15/14 Georgia, at RV/RV Ole Miss and against Florida), two trios against then-No. 12/8 Tennessee and once at then-No. 8/8 LSU.
- In 12 of 26 games this season, the Crimson Tide's first field-goal make of the contest was a 3-pointer, thanks to the effort of four different players.
 - 5 Brittany Davis
 - 3 Hannah Barber
 - 2 Megan Abrams
 - 2 JaMya Mingo-Young

THE CHARITY STRIPE

- Free throws are head coach Kristy Curry's bread and butter, and since she arrived at the Capstone, Alabama's free-throw efficiency has improved drastically.
- One season before she got on campus, the Crimson Tide shot 62.3 percent from the line. Now, Alabama is the fourth-best free-throw shooting team in the conference, finding success on 348 of its 489 trips to the line, for 71.2 percent shooting.
 - The Crimson Tide has had some impressive performances in the second half of the SEC.
 - In the Tide's game at the then-No. 1/1 South Carolina Gamecocks on Feb. 3, it made 10-of-12 free throws.
 - In the Tide's win at the Vanderbilt Commodores on Feb. 6, JaMya Mingo-Young made 10-of-14 free throws.
 - In the Tide's game against the Kentucky Wildcats on Feb. 13, Alabama made 13-of-14 free throws, while Megan Abrams went 6-of-6 at the stripe.
 - In the Tide's win against then-No. 12/8 Tennessee on Feb. 17, it made 14-of-16 at the stripe, as Megan Abrams paced the team with 7-of-7 free throws.
- Last season, UA had its best free-throw percentage in nine seasons under Curry with an SEC-best 75.4 percent.

NOTEWORTHY ACTIVE STREAKS

MEGAN ABRAMS

- Abrams has recorded at least one steal for 12 of the last 13 games.
- Abrams has recorded 10-or-more points for eight of the last nine games.
- Abrams has recorded 20-or-more points for three of the last four games.
- Abrams has had at least .750 from the free-throw line for the last four straight games.
- Abrams has had at least four rebounds for the fifth straight game.

HANNAH BARBER

- Barber has made a three-point field goal for 36 straight games.

BRITTANY DAVIS

- Davis has grabbed six-or-more rebounds for five straight games.
- Davis has scored at least 18 points for three straight games.

JAMYA MINGO-YOUNG

- Mingo-Young has recorded at least one steal for 11 straight games.
- Mingo-Young has recorded at least two steals for seven straight games.
- Mingo-Young has dished out at least one assist for seven straight games.
- Mingo-Young has dished out at least three assists for four straight games.

JADA RICE

- Rice has made at least two blocks for four straight games.

KHYLA WADE-WARREN

- Wade-Warren has made five straight starts after coming off the bench all season.

SEASON SUPERLATIVES

FIRST PLAYER TO SCORE

Brittany Davis	9
Megan Abrams	5
JaMya Mingo-Young	4
Hannah Barber	3
Jada Rice	3
Taylor Sutton	2

FIRST PLAYER TO SUB

Khyla Wade-Warren	14
Myra Gordon	5
Jada Rice	5
Taylor Sutton	3
Nia Daniel	2

OPENING TIP CONTROLLED

Jada Rice	13
Megan Abrams	1
Brittany Davis	1
Opponents	11

LEADER IN SCORING

Megan Abrams	10
Brittany Davis	10
JaMya Mingo-Young	5
Hannah Barber	1
Khyla Wade-Warren	1

LEADER IN REBOUNDS

Brittany Davis	11
JaMya Mingo-Young	9
Jada Rice	4
Megan Abrams	1
Khyla Wade-Warren	1

LEADER IN ASSISTS

Hannah Barber	13
JaMya Mingo-Young	11
Brittany Davis	5
Megan Abrams	4
Taylor Sutton	2
Jada Rice	1

LEADER IN STEALS

JaMya Mingo-Young	14
Brittany Davis	7
Megan Abrams	6
Jada Rice	6
Hannah Barber	5
Khyla Wade-Warren	2
Taylor Sutton	2
Ahriahna Grizzle	1
Myra Gordon	1

MUSIC TO OUR EARS

The Crimson Tide broke some hearts in Nashville, as the University of Alabama women's basketball team defeated Vanderbilt, 77-71, on the road in overtime, Sunday, Feb. 6.

"HIT ME WITH YOUR BEST SHOT"

- Alabama shot 55.1 percent from the field on 27-of-49 shooting at Vanderbilt. That is the Crimson Tide's best shooting percentage in both a road game and an SEC game in the nine-year Kristy Curry era, and its the third best shooting percentage in all games during that time frame.

Alabama's Single Game Field-Goal Percentage Under Head Coach Kristy Curry

Opponent	Date	FG-FGA	Pct.
1. Radford	Dec. 19, 2019	32-54	.593
2. Alabama A&M	Nov. 27, 2016	40-69	.580
3. at Vanderbilt	Feb. 16, 2022	27-49	.551
4. Jacksonville	Dec. 17, 2013	28-51	.549
5. Florida A&M	Dec. 28, 2017	36-66	.545

"DON'T STOP BELIEVIN'"

- Before the Crimson Tide and Commodores pairing, the Tide was 0-7 this season when trailing with five minutes left in the game. That changed when Alabama trailed Vanderbilt, 60-57, just before the five-minute mark, but pulled out the triumph, 77-71, in overtime. After the matchup, UA improved to 1-7 in games when trailing with five minutes left in the game.
- Alabama has found some trouble closing close games in 2021-22, holding a lead in the fourth quarter in five of its 10 losses this season. Like Curry has said all season, many of UA's losses have featured a very small margin of error (...it's the "little things").
- Some of those "little things" in the Crimson Tide, Commodores pairing included getting to the free-throw line and converting, hustle plays and snagging loose balls.
 - Sure, Alabama got to the free-throw line, making 64.0 percent of its shots on 16-of-25 shooting, but it also wanted Vanderbilt to get to the free-throw line, which they did 21 times, making just 52.4 percent of its shots on 11-of-21 shooting, knowing the team is ranked last in the SEC in free-throw percentage.

BACK-TO-BACK SEC WINS

- Alabama defeated then-No. 12/8 Tennessee Thursday, Feb. 17, 74-64, in Tuscaloosa, Ala., before knocking off Texas A&M Sunday, Feb. 20, 81-79, in double overtime in Bryan-College Station, Texas.
- Alabama's win against then-No. 12/8 Tennessee marked its sixth win over the national powerhouse in the last nine meetings, and its first win over a ranked opponent this season.
- The Crimson Tide's win against the Aggies marked just its second win in the all-time, 12-game series, and its second straight win in Reed Arena. It also marked the Tide's second straight SEC road win in extra minutes this season, both of which were led in scoring by Davis.

BRITTANY DAVIS: BACK & BETTER THAN EVER**WHAT TIME OFF?**

- Alabama head coach Kristy Curry said it best in her preseason remarks, "Brittany Davis is shooting the cover off the ball right now."
- After sitting out the 2020-21 season to have her child, Davis has proven time off was no disadvantage for the senior, as she has led the team in scoring average (17.0) all season.
 - She has recorded double-digit scoring in 24-of-26 games this season.
 - She has recorded 18-or-more points in 10 of the last 12 games, which includes seven 20-plus point games.
 - Davis is currently second in the SEC in three-point field goals per game (2.7), recording at least two 3-pointers in 19-of-26 games this season and at least one 3-pointer in 22-of-26 games this season.
- In addition to her point production, the senior has also led the team in rebound average (7.1) all season.
- You may have noticed, Davis has set a career high in almost all statistical categories this season, including points (32), rebounds (12), assists (4 2X), steals (4), minutes (48), three-point field goals (7) and free throws (8).

SEC PLAYER OF THE WEEK

- Davis was crowned the Southeastern Conference Player of the Week Tuesday, Feb. 22.
- Davis helped Alabama down then-No. 12/8 Tennessee Thursday, Feb. 17, 74-64, in Tuscaloosa, Ala., before knocking off Texas A&M Sunday, Feb. 20, 81-79, in double overtime in Bryan-College Station, Texas.
- She scored 23 points on 8-of-15 shooting from the field, including 4-of-8 shooting from long range, against the Lady Volunteers, while she also recorded six rebounds. She had an even more impressive game in her next outing, scoring 32 points on 12-of-26 shooting from the field, including 7-of-15 shooting from the arc, at the Aggies, also grabbing six boards and making one steal.
- Most notably, Davis contributed just three points on 1-of-10 shooting from the field, including 0-of-5 shooting from long range, in the first half at Texas A&M. Despite her slow start to the game, she came out of the locker room after halftime scoring 29 points on 11 of her 26 attempts from the field (68.8 percent), including seven of her 10 attempts from the arc (70.0 percent).
- Her second half and overtime performance included perfect shooting in the fourth quarter (5-of-5 FG, 3-of-3 3FG) to help the Crimson Tide tie the Aggies at the end of regulation to force overtime and an eventual triumph.
- Davis' 32 points and seven three-point field goals at Texas A&M are both a career high for the guard and the most points and three-point field goals of any player on the team this season. In fact, her seven 3-pointers mark the third time she has reset her career high in that category in 2021-22.

BINGO FOR MINGO: JAMYA MINGO-YOUNG STUFFS THE STATS

- JaMya Mingo-Young has been an immediate benefit to the Crimson Tide women's basketball team since joining the program at the start of last summer.
- The junior transfer from Mississippi State is averaging a 11.2 points game and 6.6 rebounds per game, while leading the team with 2.5 steals per game (64 total).
 - Mingo-Young is the most consistent shooter in the starting lineup right now (... and that's exactly what head coach Kristy Curry needs from her) with a 47.0 field-goal percentage on the season (102-of-217) and a 45.6 field-goal percentage in conference action (57-of-125).
 - Mingo-Young is also fifth in the SEC in steals per game (2.46) and in steals (64).
- Mingo-Young has scored in double figures in six of the last 10 games.
- The junior has also recorded double-digit rebounds in four of the last six games, a streak that includes two double-doubles.

CAREER SUPERLATIVES [AT ALABAMA]**MOST GAMES PLAYED**

- 112 Hannah Barber
- 111 Megan Abrams

MOST GAMES STARTED

- 99 Megan Abrams
- 56 Hannah Barber

ACTIVE CONSECUTIVE GAMES STARTED

- 26 Brittany Davis, JaMya Mingo-Young

GAMES WITH DOUBLE-DIGIT SCORING

- 34 Megan Abrams, Brittany Davis

GAMES WITH DOUBLE-DIGIT REBOUNDING

- 7 JaMya Mingo-Young
- 5 Brittany Davis
- 3 Jada Rice

CONSECUTIVE 20-POINT SCORING GAMES

- 3 Brittany Davis (Jan. 20 and 23, 2022, Feb. 3 and 6, 2022 and Feb. 17 and 20, 2022)
- 2 Megan Abrams (Feb. 12 and 17, 2022 and Feb. 17 and 20, 2022)

HANNAH FROM HOMEWOOD

100%, 100% OF THE TIME

- Hannah Barber of Homewood, Ala., has shown tremendous improvement each season, making her biggest leap from her junior year to her senior year, particularly at the leadership level.
- Her basketball IQ has always shined and her determination to outwork her teammates in the weight room and on the practice court has been evident since she arrived at the Capstone, but for the first time in her career, she adds “leader” to her name, both by example and vocally.
 - Which, makes sense since the senior aspires to make a career out of coaching.
- As head coach Kristy Curry likes to say, “Dynamite comes in small packages,” and “Hannah is the epitome of what you want in your point guard.”

HIT-IT HANNAH: CAREER RECORD WATCH

- Beyond her “floor general” mentality, she doesn’t hesitate to shoot the ball when needed (...and we’ve needed it).
- Barber has hit a 3-pointer in every game this season, while she has knocked down a 3-pointer in 36 straight games, the best active streak in the SEC, which began at Georgia on Feb. 4, 2021.
- She is currently ranked third in the SEC and 41st in the nation in three-point field-goal percentage (40.6).
 - **ICYMI:** In her game against Mississippi State on Jan. 6, Barber led the team in scoring for the first time this season, recording 19 points, including sinking a career-high five 3-pointers. She followed up that game by scoring 12 points on 4-of-5 from the arc against then-No. 15/14 Georgia on Jan. 9.
- Barber has made 116 of her 316 attempts from the arc in her near-four-season career, making 36.7 percent of her shots from long range. Her three-point field goal percentage is currently ranked sixth among the program’s all-time career leaders in that category.

Three-Point Field-Goal Percentage Career Leaders (min. 200 att.)

Name	Seasons	3FG	3FGA	Pct.
4. Jasmine Walker	2017-21	205	556	.3687
5. Leah Gross	1993-98	180	489	.3680
6. Hannah Barber	2018-Pres.	116	316	.3671
7. Katie Sipe	2001-05	153	425	.3600
8. Kate Mastin	2002-07	144	404	.3564

GOOD ON PAPER... BETTER IN PERSON

MEGAN ABRAMS DOES IT ALL

- Megan Abrams had a busy year, between helping the Crimson Tide reach the 2021 SEC Tournament Quarterfinals and the 2021 NCAA Tournament Second Round, to spending the summer as a Procurement Analyst intern with Nike, then being selected to the 2021-22 SEC Women’s Basketball Leadership Council, to earning her undergraduate degree in finance and economics in December.
- Turning the page to 2022, her motor hasn’t stopped. Abrams co-founded a University of Alabama registered club, exclusive to Crimson Tide student-athletes, named Project I.D., which launched this February. The mission of Project I.D. is to create a safe space for student-athletes who identify with, or are allies for, minority groups, giving them the opportunity to voice their thoughts and ideas to create an inclusive student-athlete experience. Abrams and teammate, Jada Rice, have built the club from the ground up, including playing a key role in drafting the mission statement, creating a logo, marketing the organization and forming content for meetings.
- **ICYMI:** Abrams was named to the 2021-22 SEC Community Service Team Feb. 23.

SHE JUST KEEPS GETTING BETTER

- After Alabama lost more than 66.0 percent of its point production from a season ago, all eyes turned to returning veteran Abrams. Despite a brutal January for the senior, which included missing three quarters of the conference opener at Tennessee on Dec. 30 due to an elbow to the mouth, followed by oral surgery (and a whole lot of pain and lifestyle adjustments), followed by missing the Arkansas game on Jan. 27 because of a spell with COVID-19, with grit and gratitude, Abrams has stepped up to the plate.
- Abrams has scored 20-plus points in three of the last four games, including three straight games against Kentucky (Feb. 13), against then-No. 12/8 Tennessee (Feb. 17) and at Texas A&M (Feb. 20).

Year-by-Year Point Production

Year	Min.	FG-FGA	Pct.	3FG-3FGA	Pct.	Pts.	Avg.
2018-19	19.5	41-134	.306	5-34	.147	112	3.9
2019-20	23.5	74-182	.407	7-38	.184	210	7.0
2020-21	30.7	72-190	.379	20-57	.351	219	8.1
2021-22	30.4	116-276	.420	35-103	.340	351	14.0



Brielle by Brittany Davis

I knew things would change forever the very first time I held my daughter, Brielle, in my arms. You never quite know what you're going to feel until it's YOUR child. You feel her tiny heartbeat.

You see her take those tiny breaths.

You look into those tiny eyes, and instantly—you melt.

That's when I knew I had to do everything I could to be the best mother I could be—to be the best athlete, the best in school, and the best all-around person in general.

There was suddenly this little girl looking up to me, and I knew I had to make sure that she's always taken care of.

It became less about me and all about her.

So no, I'm not the same basketball player I was when I first walked through these doors here at Alabama. I'm not even the same person.

My daughter made me better in every way possible.

Breaking the news

The pregnancy didn't come without its challenges. I mean, how could it? I knew I was going to have to step away from the team and adjust a lot of things in life.

And don't think for one second I didn't hear all of the negativity from outsiders, too.

"She's never going to be the same player she used to be. Her basketball career is finished. She'll never be able to bounce back from this."

This, that, and whatever—I heard all of it.

And yet, the hardest part was telling Coach Curry I

was pregnant and had to step away from the game I've loved since I was a kid.

I honestly didn't know how to feel at first when breaking the news. I wasn't sure how Coach was going to react, you know?

This was bigger than basketball and truly a life-changing moment for me.

"We're going to get through this, and we're going to support you," she said. "Brittany, we're behind you."

Hard to describe the relief I felt right after that conversation. It was a pivotal moment for me. It's when I started to think that everything was going to be okay after all.

Seeing my coach, teammates, and, most of all, my family not giving up on me helped me not to give up on myself.

From that point on, I knew I could do this. Both on and off the court.

It takes a family

After my daughter was born, I wanted to get back to where I left the game of basketball.

Actually, no, I wanted to be better.

In my only season with Alabama so far, I earned myself an SEC Player of the Week and even a College Sports Madness Player of the Week award—I wanted that again. And more.

It wasn't about proving people wrong, either. I really wanted to do this for my daughter. It became less about everyone else and more about securing her future by finishing college, getting a good education, and taking this game as far as I could take it.

I also started thinking about the journey and all of the hard work it took for me to just even be in this

position, you know?

Things didn't go as planned for me coming out of high school, and instead of going straight to a Division I school, I ended up going to a junior college. I had a wonderful time there and loved the people I met, but nonetheless, I had to scratch and claw my way to this opportunity here at Alabama.

Nothing was ever handed to me back then, and nothing is going to be handed to me now.

I'm just thankful to have the support of my family as I chase these goals.

My parents have been my biggest supporters from the very beginning.

Mom, Dad—you guys are the real MVPs.

They're taking amazing care of my daughter at home so that I can continue my education and basketball career. I can't even put into words how much I appreciate them for sacrificing their time to take care of my child.

It's hard just seeing her on weekends, but it's what's best for her at this moment.

I also owe a big thank you to my grandmothers, Susy Farley and Ruby Davis, my sister, my brother, my aunts and uncles, and Brielle's father.

The way this family has pulled together is just amazing. My daughter is one lucky girl.

The greatest motivator

Honestly, though, I'd say I'm pretty lucky as well.

Just having my daughter in my life and being a mother made me a better person because it forced me to look at things differently. Life is now about me being the provider and ensuring we don't have to struggle.

There's no greater motivating factor.

I'm going to continue having a positive attitude each and every time I walk through these doors. I'm determined to put in the work with my teammates and have a great season.

Things are clearly different now that I'm back.

I'm more focused than ever before and no longer just going through the motions. There's too much riding on this opportunity for me not to give everything I have.

Today, I wear three hats proudly—mother, student, and basketball player.

And I'm excited for what my future holds in store for me.

LAST TIME IT HAPPENED ...

ALABAMA INDIVIDUAL

Scored 20 points

Megan Abrams (26) at Texas A&M, Feb. 20, 2022

Scored 30 points

Brittany Davis (32) at Texas A&M, Feb. 20, 2022

Scored 35 points

Jasmine Walker (41) at Auburn, Feb. 14, 2021

Consecutive 20-point games

Megan Abrams (27) vs. Tennessee, Feb. 17, 2022 and (26) at Texas A&M, Feb. 20, 2022; Brittany Davis (23) vs. Tennessee, Feb. 17, 2022 and (32) at Texas A&M, Feb. 20, 2022

Two players with 20-point games

Megan Abrams (26) and Brittany Davis (32) at Texas A&M, Feb. 20, 2022

Three players with 20-point games

Daisha Simmons (37), Shafontaye Myers (33), Ashley Williams (22) vs. Troy, Dec. 20, 2013

Made 10 field goals

Brittany Davis (12) at Texas A&M, Feb. 20, 2022

Made 15 field goals

Dominique Canty (15) vs. Tennessee, Jan. 31, 1999

Attempted 20 field goals

Megan Abrams (23) at Texas A&M, Feb. 20, 2022 and Brittany Davis (26) at Texas A&M, Feb. 20, 2022

Attempted 30 field goals

Julie Ellis (31) vs. Talledega, Jan. 14, 1973

Made six 3-point field goals

Brittany Davis (6) at Georgia, Jan. 9, 2022

Made seven 3-point field goals

Brittany Davis (7) at Texas A&M, Feb. 20, 2022

Made eight or more 3-point field goals

Ericka Russell (8) at Arkansas, Feb. 27, 2011

Attempted 10 3-point field goals

Brittany Davis (11) at LSU, Feb. 24, 2022

Attempted 15 3-point field goals

Brittany Davis (15) at Texas A&M, Feb. 20, 2022

Attempted 20 3-point field goals

Shafontaye Myers (21) vs. North Texas, Nov. 19, 2012

Made 10 free throws

JaMya Mingo-Young (10) at Vanderbilt, Feb. 6, 2022

Made 15 free throws

Shondra Johnson (16) vs. Providence, Dec. 2, 2001

Attempted 15 free throws

Cierra Johnson (16) vs. LSU, Jan. 20, 2019

Had 15 rebounds

Jasmine Walker (15) at Auburn, Feb. 14, 2021

Had 20 rebounds

Tierney Jenkins (27) at Belmont, Nov. 21, 2009

Two players with double-digit rebounds

JaMya Mingo-Young (12), Brittany Davis (11) vs. Southern Miss, Nov. 17, 2021

Had 10 assists

Hannah Barber (11) at Auburn, Feb. 14, 2021

Had 15 assists

Niesa Johnson (15) vs. Ole Miss, March 5, 1994

Had six blocked shots

Ariyah Copeland (6) vs. Clemson, Nov. 19, 2018

Had seven blocked shots

Ashley Knight (7) vs. Alabama A&M, Nov. 10, 2017

Had eight or more blocked shots

Jada Rice (8) vs. Sam Houston, Dec. 13, 2021

Had five steals

JaMya Mingo-Young (5) vs. Duke, Nov. 21, 2021

Had six steals

JaMya Mingo-Young (6) vs. Tennessee, Feb. 17, 2022

Had seven or more steals

Cierra Johnson (7) at Georgia, Jan. 27, 2019

Double-double

Brittany Davis (18 points, 11 rebounds) at LSU, Feb. 24, 2022

Consecutive double-doubles

JaMya Mingo-Young (26 points, 11 rebounds) at Chattanooga, Dec. 5, 2021 and (15 points, 11 rebounds) vs. Sam Houston, Dec. 13, 2021

Two players with double-doubles

JaMya Mingo-Young (12 points, 12 rebounds) and Brittany Davis (23 points, 11 rebounds) vs. Southern Miss, Nov. 17, 2021

Three straight double-doubles

Jasmine Walker vs. LSU (13 pts, 10 rebs), Jan. 7; at Vanderbilt (25 pts, 16 rebs), Jan. 10; at Mississippi State (10 points, 10 rebounds), Jan. 14
Ariyah Copeland vs. LSU (20 pts, 14 rebs), Jan. 7; at Vanderbilt (12 pts, 11 rebs), Jan. 10; at Miss. State (11 points, 13 rebounds), Jan. 14

Five or more straight double-doubles

Tierney Jenkins (8), Nov. 12 - Dec. 2, 2010

Triple-double

Daisha Simmons (37 pts, 11 ast, 11 rebs) vs. Troy, Dec. 20, 2013

20 points & 20 rebounds

Laura Head (25 pts & 21 rebs), vs. Florida State, Jan. 30, 1989

LAST TIME IT HAPPENED ...

ALABAMA TEAM

Scored 85 points

89 vs. Bethune-Cookman, Nov. 28, 201

Scored 90 points

109 vs. Charleston Southern, Nov. 9, 2021

Scored 95 points

109 vs. Charleston Southern, Nov. 9, 2021

Scored 100 points

109 vs. Charleston Southern, Nov. 9, 2021

Had 50 rebounds

53 vs. Bethune-Cookman, Nov. 28, 2021

Had 60 rebounds

62 vs. Arkansas Pine-Bluff, Dec. 16, 2014

Made 35 field goals

39 vs. Charleston Southern, Nov. 9, 2021

Made 40 field goals

40 vs. Alabama A&M, Nov. 27, 2016

Attempted 65 field goals

66 at South Carolina, Feb. 3, 2022

Attempted 70 field goals

73 at Texas A&M, Feb. 20, 2022

Attempted 80 field goals

87 vs. Troy, Dec. 20, 2013

Attempted 90 field goals

97 vs. North Texas, Nov. 19, 2012

Made 10 3-point field goals

11 at LSU, Feb. 24, 2022

Attempted 30 3-point field goals

31 at LSU, Feb. 24, 2022

Made 25 free throws

27 vs. Northwestern State, Dec. 16, 2018

Made 30 free throws

32 vs. Houston, Nov. 29, 2020

Made 35 free throws

36 vs. Ole Miss, Jan. 5, 2017

Attempted 35 free throws

38 vs. Houston Nov. 29, 2020

Attempted 50 free throws

50 vs. Ole Miss, Jan. 5, 2018

Had 20 assists

21 vs. North Carolina, March 22, 2021

Had 25 assists

25 at Auburn, Feb. 14, 2021

Had 30 assists

30 vs. South Alabama, Jan. 18, 1992

Had 15 steals

18 vs. Bethune-Cookman, Nov. 28, 2021

Had 20 steals

20 vs. Alabama A&M, Nov. 27, 2016

Had 25 steals

30 vs. Oral Roberts, Feb. 25, 1993

Had 10 blocks

11 vs. Sam Houston, Dec. 13, 2021

Five players score in double figures

vs. Bethune-Cookman, Nov. 28, 2021

At least four starters score in double figures

at Texas A&M, Feb. 20, 2022

Six players score in double figures

vs. Alcorn State, Dec. 6, 2015

VS. ALABAMA HUNTSVILLE (EXH) | NOV. 4, 2021

Alabama-Huntsville - 41

Record: 0-0

NO.	Name		Min	FG M-A	3P M-A	FT M-A	Rebounds OR DR TOT	Fouls PF TD	TP	AS	TO	ST	Blocks BS BA	+/-	
11	Adrian Grant	F	23:01	1-7	0-2	0-0	1 4 5	3 2	2	0	1	0	0	1	-27
0	Selena Pruitt	G	33:02	3-21	0-4	0-1	1 1 2	0 3	6	0	3	0	0	4	-38
3	Miajah Bullock	G	17:46	1-2	0-0	1-2	0 1 1	4 2	3	1	3	0	0	1	-26
12	Holly Harris	G	26:34	3-7	1-1	0-0	1 2 3	3 1	7	1	0	3	2	0	-30
15	Sloan Mann	G	28:10	5-8	1-3	2-2	1 1 2	3 2	13	0	5	0	0	0	-31
1	Olivia Howard		20:46	0-5	0-0	0-0	0 2 2	1 2	0	0	1	0	0	3	-20
4	Alaina Taylor		22:19	2-5	1-3	3-4	0 4 4	5 4	8	1	2	2	0	0	-22
42	Jirah Rogers		16:59	1-2	0-0	0-0	0 0 0	1 3	2	2	2	0	0	0	-19
10	Taylor Maxfield		04:40	0-0	0-0	0-0	0 1 1	1 0	0	0	0	0	0	0	-8
22	Jesse Jennings		04:40	0-2	0-0	0-0	0 1 1	2 0	0	0	1	0	0	0	-8
21	Ellen Fleming		02:03	0-0	0-0	0-0	0 0 0	0 0	0	0	0	0	0	0	-1
Team							3 3 6			0	1				
Totals				16-59	3-13	6-9	7 20 27	23 19	41	5	19	5	2 9	-46	

Technical Fouls: NONE

Shooting By Period		
1st FG%	4-16	25.0%
3PT%	1-6	16.7%
FT%	1-2	50%
2nd FG%	4-14	28.6%
3PT%	1-5	20.0%
FT%	0-0	0%
3rd FG%	2-12	16.7%
3PT%	0-1	0.0%
FT%	5-6	83.3%
4th FG%	6-17	35.3%
3PT%	1-1	100.0%
FT%	0-1	0%
GM FG%	16-59	27.1%
3PT%	3-13	23.1%
FT%	6-9	66.7%

Dead Ball Rebounds: 2, 0

Alabama - 87

Record: 0-0

NO.	Name	Min	FG M-A	3P M-A	FT M-A	Reb OR DR TOT	Fouls PF FD	TP	AS	TO	ST	Blocks BS BA	+/-
31	Jada Rice	C 21:36	5-8	0-0	0-0	4 6 10	2 0	10	0	0	1	2 1	30
1	Megan Abrams	G 23:13	4-9	1-3	0-0	3 5 8	0 0	9	2	2	1	1 1	23
2	JaMya Mingo-Young	G 20:46	4-7	0-1	5-8	3 4 7	2 5	13	3	4	2	0 0	29
5	Hannah Barber	G 22:48	4-7	3-6	0-0	1 4 5	2 1	11	2	0	0	0 0	23
23	Brittany Davis	G 19:59	2-9	1-5	2-4	0 3 3	2 3	7	0	2	1	1 0	30
0	Ahriahna Grizzle	15:37	1-4	0-3	1-2	0 3 3	1 3	3	3	1	1	2 0	18
4	Taylor Sutton	14:08	0-2	0-0	4-4	0 1 1	4 3	4	0	3	1	1 0	22
13	Kayla Blackshear	12:43	0-1	0-0	0-2	0 2 2	2 1	0	0	0	2	1 0	10
15	Myra Gordon	17:12	3-5	0-1	3-6	1 4 5	1 5	9	1	3	0	0 0	13
32	Nia Daniel	17:17	7-9	3-3	2-3	4 4 8	0 2	19	0	1	0	1 0	20
20	Ruth Koang	07:21	1-1	0-0	0-0	0 0 0	1 0	2	0	0	0	0 0	6
33	Khyia Wade-Warren	07:20	0-0	0-0	0-0	0 1 1	2 0	0	0	0	0	1 0	6
Team						1 0 1				0			
Totals			31-62	8-22	17-29	17 37 54	19 23	87	14	14	9	2 46	

Technical Fouls: NONE

Shooting By Period		
1st FG%	10-19	52.6%
3PT%	4-7	57.1%
FT%	2-5	40%
2nd FG%	6-15	40.0%
3PT%	1-5	20.0%
FT%	0-2	0%
3rd FG%	6-15	40.0%
3PT%	1-6	16.7%
FT%	8-12	66.7%
4th FG%	9-13	69.2%
3PT%	2-4	50.0%
FT%	7-10	70%
GM FG%	31-62	50.0%
3PT%	8-22	36.4%
FT%	17-29	58.6%

Dead Ball Rebounds: 6, 0

	UAH	UA
Biggest lead	1 (1 st 8:35)	48 (4 th 1:43)
Best Scoring Run	5 (2 nd 8:08)	16 (1 st 4:21)
Lead Changes	2	
Times Tied	0	
Time with Lead	00:15	38:37

Points from Turnovers	UAH	UA
Paint	22	42
Second Chance	2	14
Fast Breaks	1	21
Bench	10	37

Period by Period Scoring	1st	2nd	3rd	4th	TOT
UAH	10	9	9	13	41
UA	26	13	21	27	87

VS. CHARLESTON SOUTHERN | NOV. 9, 2021

Charleston So. - 32

Record: 0-1

No.	Name	Min	FG M-A	3P M-A	FT M-A	Rebounds OR DR TOT	Fouls PF FD	TP	AS	TO	ST	Blocks BS BA	+/-
13	Sharita Godfrey	F 16:06	2-7	1-3	0-0	0 5 5	2 1	5	0	2	0	0	-4
20	Madison Adamson	F 38:13	0-7	0-3	0-0	2 2 4	3 2	0	2	5	1	0	-6
22	Alyssia Faye	F 20:30	4-9	0-2	0-0	0 3 3	4 4	8	0	4	1	0	-4
5	Sha'Mya Leigh	G 33:57	4-15	1-4	0-0	0 3 3	4 0	9	1	4	1	0	-6
23	Tori Gittens	G 31:23	1-4	1-2	2-2	2 1 3	1 2	5	1	5	1	0	-6
1	Victoria Dames	19:22	0-5	0-2	0-0	1 2 3	3 1	0	2	2	0	0	-2
2	Skylar Baltezegar	14:01	1-6	0-0	1-1	1 4 5	3 2	3	0	2	0	0	-2
15	Janaia Fargo	11:34	0-1	0-1	2-2	0 2 2	2 3	2	1	5	0	0	-2
10	Jordan Rogers	09:25	0-1	0-0	0-0	1 1 2	0 0	0	0	1	0	0	-1
25	Makenna Winans	05:29	0-1	0-0	0-0	0 2 2	2 0	0	0	0	0	2	-1
Team						0 4 4				1			
Totals			12-56	3-17	5-5	7 29 36	24 15	32	7	31	4	2 2	-7

Technical Fouls: NONE

Shooting By Period		
1st FG%	4-12	33.3%
3PT%	2-5	40.0%
FT%	0-0	0%
2nd FG%	2-12	16.7%
3PT%	0-1	0.0%
FT%	2-2	100%
3rd FG%	3-15	20.0%
3PT%	1-4	25.0%
FT%	0-0	0%
4th FG%	3-17	17.6%
3PT%	0-7	0.0%
FT%	3-3	100%
GM FG%	12-56	21.4%
3PT%	3-17	17.6%
FT%	5-5	100.0%

Dead Ball Rebounds: 0, 0

Alabama - 109

Record: 1-0

No.	Name	Min	FG M-A	3P M-A	FT M-A	Rebounds OR DR TOT	Fouls PF FD	TP	AS	TO	ST	Blocks BS BA	+
31	Jada Rice	C 10:32	6-8	0-0	2-2	1 3 4	2 2	14	0	0	0	0 0	36
1	Megan Abrams	G 08:45	1-3	0-2	0-0	0 0 0	1 2	2	1	0	2	0 0	17
2	JaMya Mingo-Young	G 20:30	4-6	1-2	3-4	2 5 7	0 3	12	5	1	1	1 0	42
5	Hannah Barber	G 21:13	1-2	1-2	0-0	0 3 3	0 0	3	4	2	0	0 0	36
23	Brittany Davis	G 21:38	9-19	5-10	2-2	5 7 12	1 2	25	2	1	1	0 0	46
13	Kayla Blackshear	15:55	3-5	0-0	3-4	3 3 6	3 4	9	0	2	1	0 0	19
15	Myra Gordon	12:42	0-3	0-0	0-0	1 3 4	2 0	0	1	1	1	0 0	26
32	Nia Daniel	23:48	1-8	0-3	2-2	0 1 1	2 1	4	0	0	1	1 0	38
33	Khyia Wade-Warren	15:01	7-9	1-2	1-4	2 3 5	1 3	16	0	2	0	0 0	26
4	Taylor Sutton	18:23	3-7	0-1	7-9	0 1 1	0 5	13	3	0	0	0 0	37
0	Ahriahna Grizzle	17:39	3-7	0-2	0-0	0 1 1	3 0	6	1	1	2	1 0	36
12	Allie Craig Cruce	11:07	1-1	0-0	1-2	0 5 5	0 1	3	2	0	1	0 0	23
45	Taylor Cullinan	02:47	0-1	0-1	2-2	0 0 0	0 1	2	0	0	1	0 0	3
Team						2 2 4				0			
Totals			39-79	8-25	23-31	16 37 53	15 24	109	19	8	13	2 2	77

Technical Fouls: NONE

Shooting By Period		
1st FG%	9-22	40.9%
3PT%	0-6	0.0%
FT%	2-5	40%
2nd FG%	10-20	50.0%
3PT%	2-5	40.0%
FT%	4-6	66.7%
3rd FG%	10-18	55.6%
3PT%	3-7	71.4%
FT%	9-11	81.8%
4th FG%	10-19	52.6%
3PT%	1-7	14.3%
FT%	8-9	88.9%
GM FG%	39-79	49.4%
3PT%	8-25	32.0%
FT%	23-31	74.2%

Dead Ball Rebounds: 3, 0

VS. TULANE | NOV. 14, 2021

Tulane - 69

Record: 2-0

No.	Name	Min	FG M-A	3P M-A	FT M-A	Rebounds OR DR TOT	Fouls PF FD	TP	AS	TO	ST	Blocks BS BA	+/-
23	Krystal Freeman	F 34:55	5-12	0-3	4-5	3 8 11	2 4	14	0	1	0	2 0	-3
42	Mia Heide	F 27:06	3-5	0-0	2-2	4 3 7	4 1	8	1	2	0	4 0	-1
0	Arsula Clark	G 33:17	3-8	0-0	5-8	1 3 4	1 8	11	5	6	1	0 0	7
11	Moon Ursin	G 35:47	5-14	1-3	1-1	4 5 9	1 1	12	0	3	2	0 2	-5
14	Dynah Jones	G 28:26	5-11	0-1	5-6	1 2 3	2 4	15	1	2	0	0 0	-2
1	Kaila Anderson	09:53	1-2	1-2	1-2	0 0 0	1 1	4	3	2	1	0 0	2
15	Anijah Grant	12:47	0-3	0-0	0-0	2 3 5	3 0	0	0	2	0	1 1	4
12	Sierra Cheatham	10:04	2-3	1-1	0-0	1 2 3	0 0	5	0	0	1	0 0	9
21	Irina Parau	04:00	0-0	0-0	0-0	1 0 1	1 0	1	0	0	0	0 0	5
3	Marta Galic	03:45	0-1	0-1	0-0	0 2 2	0 0	0	0	1	0	0 0	-1
Team						1 1 2				0			
Totals			24-59	3-11	18-24	18 29 47	14 20	69	10	20	7	3 3	3

Technical Fouls: NONE

Shooting By Period		
1st FG%	5-17	29.4%
3PT%	0-2	0.0%
FT%	4-5	80%
2nd FG%	7-15	46.7%
3PT%	3-5	60.0%
FT%	0-0	0%
3rd FG%	6-17	35.3%
3PT%	0-2	0.0%
FT%	7-11	63.6%
4th FG%	6-10	60.0%
3PT%	0-2	0.0%
FT%	7-8	87.5%
GM FG%	24-59	40.7%
3PT%	3-11	27.3%
FT%	18-24	75.0%

Dead Ball Rebounds: 4, 0</

UNIVERSITY OF ALABAMA / CRIMSON TIDE / BASKETBALL

VS. DUKE | NOV. 21, 2021

Alabama - 71

Record: 2-2

NO. Name	Min	FG M-A	3P M-A	FT M-A	Rebounds OR DR TOT	Fouls PF FD	TP	AS	TO	ST	Blocks BS BA	+/-
31 Jada Rice	C 27:09	2-3	0-0	0-0	2 3 5	3 1 4	0	2	1	0	0	3
1 Megan Abrams	G 30:47	10-18	3-4	4-5	2 5 7	1 4 27	1	2	2	1	1	1
2 JaMya Mingo-Young	G 33:42	3-8	0-0	3-4	0 3 3	5 5 9	3	3	5	0	0	7
5 Hannah Barber	G 25:17	1-5	1-2	0-0	0 0 0	2 1 3	1	0	0	0	0	-15
23 Brittany Davis	G 30:26	5-10	2-4	4-6	1 0 1	1 2 16	1	5	3	0	1	-6
20 Ruth Koang	11:44	0-2	0-0	0-0	0 0 0	1 1 0	0	0	1	0	0	-8
4 Taylor Sutton	13:26	2-8	1-2	0-0	2 2 2	3 0 5	0	1	0	0	2	3
15 Myra Gordon	19:30	1-3	0-0	0-2	2 3 5	3 0 2	0	1	0	0	0	1
32 Nia Daniel	06:52	0-1	0-1	5-5	0 0 0	3 3 5	2	0	0	0	0	-1
33 Khyla Wade-Warren	01:07	0-1	0-0	0-0	0 0 0	2 0 0	0	1	1	0	0	2
Team					6 3 9		0	1				
Totals		24-59	7-13	16-22	15 17 32	24 17	71	9	16	12	1 4	-3

Technical Fouls: NONE

Shooting By Period		
1 st FG%	3-11	27.3%
3PT%	0-1	0.0%
FT%	8-9	88.9%
2 nd FG%	5-13	38.5%
3PT%	3-5	60.0%
FT%	3-5	60%
3 rd FG%	9-18	50.0%
3PT%	2-4	50.0%
FT%	2-4	50%
4 th FG%	7-17	41.2%
3PT%	2-3	66.7%
FT%	3-4	75%
GM FG%	24-59	40.7%
3PT%	7-13	53.8%
FT%	16-22	72.7%

Dead Ball Rebounds: 3, 0

Duke - 74

Record: 4-0

NO. Name	Min	FG M-A	3P M-A	FT M-A	Rebounds OR DR TOT	Fouls PF FD	TP	AS	TO	ST	Blocks BS BA	+/-
25 Jade Williams	F 20:27	6-7	0-1	2-4	3 4 7	3 3 14	0	5	0	2	0	8
34 Lexi Gordon	F 26:50	4-7	1-1	2-2	0 3 3	1 1 11	0	2	0	0	0	2
00 Celeste Taylor	G 36:15	9-14	3-5	0-0	2 2 4	2 4 21	3	5	2	0	0	1
2 Vanessa de Jesus	G 26:18	2-5	1-4	1-2	0 0 0	3 2 6	5	1	1	0	0	2
4 Elizabeth Balogun	G 30:20	2-3	0-0	2-2	1 3 4	3 2 5	1	1	1	0	0	7
24 O. Akinbote-James	19:10	1-2	0-0	3-4	0 5 5	3 5 5	2	1	0	2	0	2
30 Shayenn Day-Wilson	26:24	2-8	0-4	7-9	0 2 2	1 7 11	3	4	1	0	1	-1
3 Miela Goodchild	08:28	0-0	0-0	0-0	0 2 2	0 0 0	0	1	0	0	0	-3
22 Amaya Finklea-Gutty	05:48	0-0	0-0	0-0	1 1 2	1 0 0	0	1	0	0	0	0
Team					0 1 1		0	1				
Totals		26-48	5-18	17-23	7 23 30	17 24	74	14	22	5	1 3	3

Technical Fouls: NONE

Shooting By Period		
1 st FG%	7-12	58.3%
3PT%	2-5	40.0%
FT%	4-5	80%
2 nd FG%	5-11	45.5%
3PT%	1-4	25.0%
FT%	3-5	60%
3 rd FG%	7-14	50.0%
3PT%	1-5	20.0%
FT%	2-4	50%
4 th FG%	7-11	63.6%
3PT%	1-4	25.0%
FT%	8-9	88.9%
GM FG%	26-48	54.2%
3PT%	5-18	27.8%
FT%	17-23	73.9%

Dead Ball Rebounds: 4, 0

	ALA	DUK
Biggest lead	6 (4 th 8:10)	10 (3 rd 6:36)
Best Scoring Run	9 (3 rd 4:37)	7 (1 st 4:50)
Lead Changes	6	
Times Tied	3	
Time with Lead	10:51	25:49

Points from Turnovers	ALA	DUK
Paint	22	16
Second Chance	30	28
Fast Breaks	19	8
Bench	8	16

Period by Period Scoring	1st	2nd	3rd	4th	TOT
ALA	14	16	22	19	71
DUK	20	14	17	23	74

VS. MERCER | NOV. 24, 2021

Mercer - 48

Record: 3-3

NO. Name	Min	FG M-A	3P M-A	FT M-A	Rebounds OR DR TOT	Fouls PF FD	TP	AS	TO	ST	Blocks BS BA	+/-
32 Jaron Dougherty	F 26:47	2-10	0-1	0-0	1 9 10	1 0 4	1	2	1	0	0	-2
44 Allie Thayne	F 24:15	1-3	0-0	0-0	2 1 3	3 2 2	3	0	0	1	0	-16
1 Amoria Neal-Tysor	G 34:39	7-16	3-7	2-2	1 5 6	2 2 19	1	1	1	0	0	-13
4 Endia Banks	G 13:44	3-6	0-1	0-0	0 1 1	0 1 6	0	2	0	0	1	-8
21 Shannon Titus	G 36:20	4-17	0-0	2-4	2 6 8	2 2 10	2	2	0	2	0	-11
44 Lauren McNamara-Clement	05:43	1-1	0-0	0-0	1 0 1	0 0 2	0	0	0	0	0	-2
5 Erin Houpt	26:41	1-5	1-3	0-0	0 0 0	1 3 3	2	0	2	0	0	6
20 Sierra Votaw	13:58	0-2	0-0	0-0	3 2 5	1 0 2	1	3	0	2	0	-3
15 Nigeria Harkless	09:17	1-1	0-0	0-2	2 2 4	0 2 2	0	1	2	0	0	9
2 Sydney Boykin	08:17	0-0	0-0	0-0	0 0 0	0 0 0	0	0	1	0	0	5
0 Kinley Fisher	00:19	0-1	0-0	0-0	0 0 0	0 0 0	0	0	0	0	0	0
Team					0 1 1		0	1				
Totals		20-62	4-12	4-8	12 27 39	10 12	48	10	13	6	5 1	-7

Technical Fouls: NONE

Shooting By Period		
1 st FG%	6-19	31.6%
3PT%	1-5	20.0%
FT%	0-0	0%
2 nd FG%	4-16	25.0%
3PT%	0-2	0.0%
FT%	1-4	25%
3 rd FG%	5-13	38.5%
3PT%	1-1	100.0%
FT%	2-2	100%
4 th FG%	5-14	35.7%
3PT%	2-4	50.0%
GM FG%	20-62	32.3%
3PT%	4-12	33.3%
FT%	4-8	50.0%

Dead Ball Rebounds: 2, 0

Alabama - 55

Record: 3-2

NO. Name	Min	FG M-A	3P M-A	FT M-A	Rebounds OR DR TOT	Fouls PF FD	TP	AS	TO	ST	Blocks BS BA	+/-
31 Jada Rice	C 20:08	6-11	0-0	0-1	0 5 5	3 2 12	0	3	0	1	0	8
1 Megan Abrams	G 37:03	5-14	4-9	3-4	1 4 5	1 2 17	1	1	2	0	1	6
2 JaMya Mingo-Young	G 18:38	1-5	0-1	0-2	0 3 3	2 1 2	2	3	1	0	2	7
5 Hannah Barber	G 32:55	1-4	1-3	0-0	0 2 2	1 2 3	6	1	2	0	0	14
23 Brittany Davis	G 32:12	4-8	3-6	2-2	4 5 9	1 2 13	2	1	2	0	0	10
33 Khyla Wade-Warren	07:17	0-2	0-1	0-0	0 1 1	0 0 0	0	0	0	0	1	2
4 Taylor Sutton	07:45	0-1	0-1	0-0	0 1 0	1 0 0	0	0	0	1	0	-5
20 Ruth Koang	01:39	0-0	0-0	0-0	0 0 0	0 0 0	0	0	2	0	0	-2
32 Nia Daniel	12:03	0-2	0-1	0-0	0 3 3	2 0 0	0	1	0	0	1	-3
15 Myra Gordon	14:54	1-2	0-1	0-0	1 3 4	1 0 2	1	3	1	0	0	-2
12 Allie Craig Cruce	15:26	2-4	1-3	1-2	1 1 2	1 1 6	2	1	0	0	0	0
Team					3 4 7		0	1				
Totals		20-53	9-26	6-11	10 32 42	12 10	55	14	17	9	1 5	7

Technical Fouls: NONE

Shooting By Period		
1 st FG%	6-13	46.2%
3PT%	5-10	50.0%
FT%	2-2	100%
2 nd FG%	3-14	21.4%
3PT%	1-6	16.7%
FT%	0-0	0%
3 rd FG%	7-16	43.8%
3PT%	3-8	37.5%
FT%	1-5	20%
4 th FG%	4-10	40.0%
3PT%	0-2	0.0%
GM FG%	20-53	37.7%
3PT%	9-26	34.6%
FT%	6-11	54.5%

Dead Ball Rebounds: 1, 0

	MU	UA
Biggest lead	0 (1 st 10:00)	14 (3 rd 5:18)
Best Scoring Run	11 (2 nd 9:12)	12 (3 rd 5:18)
Lead Changes	0	
Times Tied	0	
Time with Lead	00:00	39:38

Points from Turnovers	MU	UA
Paint	8	15
Second Chance	6	7
Fast Breaks	6	12
Bench	7	8

Period by Period Scoring	MU	UA
1st	13	9
2nd	9	13
3rd	13	13
4th	13	48
TOT	48	55

VS. WESTERN CAROLINA | NOV. 26, 2021

Western Caro. - 43

Record: 3-3

NO. Name	Min	FG M-A	3P M-A	FT M-A	Rebounds OR DR TOT	Fouls PF FD	TP	AS	TO	ST	Blocks BS BA	+/-
5 Vanessa Oduah	G 10:05	0-5	0-3	0-0	0 2 2	5 0 2	0	1	5	1	0	-9
12 Joi Reid	G 19:05	0-0	0-0	2-2	1 4 5	5 1 2	0	1	2	1	0	-12
20 Andrea Martin Ruiz	G 10:35	0-1	0-0	0-0	0 2 2	2 0 0	0	2	4	0	0	-7
31 Audrey Meyers	G 12:45	1-3	1-1	0-0	0 1 1	2 1 3	0	1	1	0	1	-17
33 Tembre Moates	G 23:59	2-4	0-0	0-0	1 2 3	1 0 4	0	1	0	1	0	-20
2 Mykaylyn Davis	11:30	0-2	0-1	0-0	0 0 0	2 0 0	0	1	2	2	0	-19
22 Nadia Marshall	33:48	7-14	0-1	1-1	2 4 6	1 4 15	0	0	4	0	0	-20
22 Nadia Marshall	14:39	2-5	0-0	4-4	1 1 2	4 3 8	0	0	0	2	0	-10
13 Zanonira Cruz	17:50	0-3	0-1	0-0	0 2 2	2 0 0	0	1	4	0	0	-17
14 Jacey Justice	30:58	3-10	1-6	2-3	1 3 4	1 2 9	4	7	0	0	0	-18
25 Bailey Trumm	06:47	0-1	0-1	0-0	0 0 0	0 0 0	0	1	0	0	0	-11
11 Sophia Singer	07:59	1-1	0-0	0-0	0 0 0	1 0 2	0	0	0	0	0	-10
Team					1 2 3		0	1				
Totals		16-49	2-14	9-10	7 23 30	21 13	43	10	26	10	4 1	-34

Technical Fouls: NONE

Shooting By Period		
1 st FG%	4-12	33.3%
3PT%	1-5	20.0%
FT%	0-1	0%
2 nd FG%	3-7	42.9%
3PT%	0-3	0.0%
FT%	4-4	100%
3 rd FG%	6-16	37.5%
3PT%	1-3	33.3%
FT%	2-2	100%
4 th FG%	3-14	21.4%
3PT%	0-3	0.0%
FT%	3-3	100%
GM FG%	16-49	32.7%
3PT%	2-14	14.3%
FT%	9-10	90.0%

Dead Ball Rebounds: 0, 0

Alabama - 77

Record: 4-2

NO. Name		Min	FG	3P	FT	Rebounds	Fouls	TP	AS	TO	ST	Blocks	+/-
			M/A	M/A	M/A	OR DR TOT	PF FD					B/B	
31 Jada Rice	C	21:55	1-5	0-0	2-2	3 4 7	1 2 4	1	2	4	0	1	22
1 Megan Abrams	G	26:48	5-8	4-6	0-0	2 2 2	0 4	17	2	3	2	0	28
2 JaMya Mingo-Young	G	18:24	0-2	0-2	2-4	1 0 1	1 2	2	1	1	2	0	24
5 Hannah Barber	G	25:12	2-8	2-7	2-2	0 2 2	1 0	8	5	0	1	0	35
23 Brittany Davis	G	21:57	5-12	2-8	2-4	3 4 7	0 3	14	0	2	0	0	32
4 Taylor Sulton	B	16:56	0-2	0-0	0-0	1 1	0 0	0	1	1	0	2	3
15 Myra Gordon	B	18:22	2-3	0-1	3-4	1 4 5	1 2	7	1	1	0	0	3
32 Nia Daniel	B	14:16	3-6	1-2	5-6	3 2 5	3 5	12	0	3	1	0	6
33 Khyia Wade-Warren	B	12:39	3-5	0-1	0-0	0 0 0	5 6	1	1	0	0	0	1
12 Allie Craig Cruce	B	13:29	1-2	0-1	2-2	0 3 3	1 3	4	0	2	2	1	-8
20 Ruth Koang	B	05:26	0-2	0-0	0 0 0	0 0 0	0 0	0	0	0	0	0	4
0 Ahriahna Grizzle	B	04:36	1-1	1-1	0-0	0 1 1	0 0	3	0	1	0	0	7
Team						2 4 6		0	0				
Totals			23-56	10-29	21-28	13 27 40	13 21 77	12	15	16	1	4	34

VS. MEMPHIS | NOV. 30, 2021

Memphis - 44		Record: 6-2													
NO.	Name	Min	FG M-A	3P M-A	FT M-A	Rebounds OR DR TOT	Fouls PF FD	TP	AS	TO	ST	Blocks BS BA	+/-		
33	Alana Davis	F 14:52	0-0	0-0	1-2	0 0 0	2 1 1	1	0	2	1	1	0 -5		
2	Madison Griggs	G 30:12	2-10	2-8	2-2	1 3 4	1 1 8	2	0	1	0	0 -22			
3	Jatyia Jones	G 19:18	3-5	2-3	0-0	0 4 4	1 1 8	0	1	1	0	0 -14			
5	Emani Jefferson	G 22:40	1-4	0-1	0-0	0 2 2	2 3 2	3	2	0	1	0 -4			
23	Jamirah Shutes	G 29:16	3-11	2-5	0-0	0 1 1	2 1 8	0	2	1	0	1 -19			
4	Maya Stovall	18:25	0-3	0-1	0-0	0 1 1	2 0 0	3	2	0	0	0 -25			
55	Tyler Frierson	15:19	5-7	0-0	0-1	3 2 5	2 1 10	1	1	1	0	0 -12			
13	Coriah Beck	06:15	0-2	0-0	0-0	0 0 0	0 0 0	0	1	0	0	0 -8			
53	Lanetta Williams	15:04	1-5	0-0	0-0	3 4 7	1 1 2	0	1	0	2	0 -10			
24	Makaiya Brooks	05:50	1-4	1-4	0-0	0 0 0	0 0 3	0	1	0	0	0 -3			
1	Hannah Riddick	03:41	0-1	0-0	0-2	0 0 0	0 0 0	0	0	1	0	0 -8			
40	Aliyah Green	07:18	0-1	0-0	0-2	1 3 4	2 2 0	0	0	0	1	0 -8			
25	En'Dya Buford	07:22	1-2	0-1	0-0	3 0 3	0 0 2	0	0	1	0	0 0			
22	Callie Wright	04:28	0-1	0-1	0-0	0 0 0	0 0 0	0	0	1	0	0 1 3			
Team						2 1 3		0		2					
Totals			17-56	7-24	3-9	13 21 34	15 12 44	9	17	8	4 2	-27			
Dead Ball Rebounds: 2, 0															
Shooting By Period															
1 st FG		6-15		40.0											
3 rd FG		1-4		25.0%											
FT		0-0		0.0											
2 nd FG		2-13		15.4%											
3 rd FT		1-6		16.7%											
FT		0-0		0.0											
3 rd FG		6-15		40.0%											
3 rd FT		4-7		57.1%											
FT		0-0		0.0											
4 th FG		3-13		23.1%											
3 rd FT		1-7		14.3%											
FT		3-9		33.3%											
GM FG		17-56		30.4%											
3 rd FT		7-24		29.2%											
FT		3-9		33.3%											

Technical Fouls: NONE

Alabama - 71		Record: 6-2														
NO.	Name	Min	FG M-A	3P M-A	FT M-A	Rebounds OR DR TOT	Fouls PF FD	TP	AS	TO	ST	Blocks BS BA	+/-			
31	Jada Rice	C 27:32	6-9	0-0	1-1	5 6 11	1 4	13	4	0	3	1 1	28			
1	Megan Abrams	G 31:16	5-11	1-5	3-4	1 3 4	0 5	14	1	2	0	0 1	24			
2	JaMya Mingo-Young	G 30:16	4-9	1-1	0-0	2 4 6	3 0	9	4	1	2	0 0	16			
5	Hannah Barber	G 28:14	4-6	4-6	1-2	0 1 1	0 4	13	4	0	1	0 0	30			
23	Brittany Davis	G 28:58	6-15	2-9	0-0	1 5 6	2 0	14	0	2	3	0 0	22			
15	Myra Gordon	14:10	1-3	0-1	0-0	0 4 4	0 0	2	0	1	0	0 0	7			
33	Khyla Wade-Warren	12:28	1-3	0-0	0-0	2 2 4	1 1	2	1	2	0	1 1	-1			
4	Taylor Sutton	10:48	1-4	0-1	0-0	0 0 0	1 1	2	0	1	0	0 0	-3			
12	Allie Craig Cruce	06:50	0-0	0-0	0-0	1 0 1	1 0	0	2	2	0	0 0	1			
0	Ahriahna Grizzle	05:06	0-0	0-0	0-0	0 0 0	1 0	0	0	0	1	0 0	-3			
20	Ruth Koang	03:05	1-1	0-0	0-0	1 2 3	2 0	2	0	1	0	0 0	2			
45	Taylor Cullinan	01:17	0-2	0-1	0-0	1 0 1	0 0	0	0	0	0	0 0	2			
Team								0	3	3						
Totals			29-63	8-24	5-7	14 30 44	12 15	71	16	13	10	2 4	27			
														Shooting By Period		
														1 st FG%	11:20	55.0%
														2 nd FG%	3:8	37.5%
														3 rd FG%	0:0	0%
														2 nd FT%	7:15	46.7%
														3 rd FT%	2:6	33.3%
														FT%	2:2	100%
														3 rd FG%	6:12	50.0%
														3 rd FT%	1:3	33.3%
														FT%	3:5	60%
														4 th FG%	5:16	31.3%
														3 rd FT%	2:7	28.6%
														FT%	0:0	0%
														GM FG%	29-63	46.0%
														3 rd FT%	8:24	33.3%
														FT%	5:7	71.4%

Technical Fouls: NONE

	UM	UA
Biggest lead	0 (1 st 10:00)	32 (4 th 6:32)
Best Scoring Run	6 (3 rd 9:19)	9 (2 nd 6:46)
Lead Changes	0	
Times Tied	0	
Time with Lead	00:00	39:21

Points from	UM	UA
Turnovers	9	15
Paint	20	38
Second Chance	4	17
Fast Breaks	8	8
Bench	17	8

Period by Period Scoring	1st	2nd	3rd	4th	TOT
UM	13	5	16	10	44
UA	25	18	16	12	71

Shooting By Period			
1 st	FG%	11-20	55.0%
	3PT%	3-8	37.5%
	FT%	0-0	0%
2 nd	FG%	7-15	46.7%
	3PT%	2-6	33.3%
	FT%	2-2	100%
3 rd	FG%	6-12	50.0%
	3PT%	1-3	33.3%
	FT%	3-5	60%
4 th	FG%	5-16	31.3%
	3PT%	2-7	28.6%
	FT%	0-0	0%
GM	FG%	29-63	46.0%
	3PT%	8-24	33.3%
	FT%	5-7	71.4%

Dead Ball Rebounds: 1, 0

VS. HOUSTON | DEC. 3, 2021

Houston - 67		Record: 3-5												
NO.	Name	Min	FG M-A	3P M-A	FT M-A	Rebounds OR DR TOT	Fouls PF FD	TP	AS	TO	ST	Blocks BS BA	+/-	
1	Bria Patterson	F 29:25	0-3	0-2	0-0	0 4 4	0 0	0	2	1	1	1 0	-12	
30	Tatyana Hill	F 21:02	4-9	0-0	1-2	4 4 8	4 2	9	0	3	3	2 0	2	
2	Tiana Young	G 25:43	3-9	1-1	0-0	0 0 0	2 2	7	1	3	2	0 1	-17	
10	Britney Onyeje	G 19:01	2-7	1-6	0-0	0 1 1	5 0	5	1	1	0	0 0	8	
14	Laila Blair	G 26:20	7-14	2-6	4-4	0 3 3	2 2	20	1	2	2	0 1	-1	
5	Dymond Gladney	30:35	4-10	1-4	3-5	0 4 4	3 4	12	1	0	6	0 0	-2	
45	Fatou Diagne	13:17	3-5	0-0	0-0	1 2 3	0 0	6	0	1	0	1 0	-15	
23	Julia Blackshell-Fair	11:27	1-3	0-0	0-0	0 0 0	0 0	2	1	0	0	0 0	-12	
34	Kamryn Jones	10:34	1-1	0-0	0-2	1 2 3	1 1	2	0	0	0	1 0	4	
0	Eryka Sidney	02:40	0-0	0-0	0-0	0 0 0	0 0	0	0	1	1	0 0	-4	
11	Ash'a Thompson	01:16	0-1	0-0	0-0	0 0 0	0 0	0	0	0	0	0 0	-2	
32	Tamara Nard	05:42	1-2	0-0	0-0	1 1 2	0 0	2	0	0	2	0 1	1	
4	Tae'lor Purvis	02:58	1-1	0-0	0-0	0 0 0	0 0	2	0	0	0	0 0	0	
Team						1 1 2		0	0	0				
Totals				27-65	5-19	8-13	8 22 30	21 11	67	7	12	17 5 3	-10	

Shooting By Period			
1 st	FG%	7-17	41.2%
	3PT%	2-5	40.0%
	FT%	3-4	75%
2 nd	FG%	4-15	26.7%
	3PT%	1-3	33.3%
	FT%	1-5	20%
3 rd	FG%	7-16	43.8%
	3PT%	1-7	14.3%
	FT%	2-2	100%
4 th	FG%	9-17	52.9%
	3PT%	1-4	25.0%
	FT%	2-2	100%
GM FG%	27-65	41.5%	
	3PT%	5-19	26.3%
	FT%	8-13	61.5%

Dead Ball Rebounds: 2 0

Technical Fouls: Coach 3 3rd: 25

Technical Fouls: Coach 3rd 3:25

NO. Name		Min	FG M-A	3P M-A	FT M-A	Rebounds OR DR TOT	Fouls PF FD	TP	AS	TO	ST	Blocks BS BA	+/-	Shooting By Period		
31	Jada Rice	C 20:11	4-5	0-0	1-2	0 4 4	3 1	9	1	1	0	0	5	1 st FG%	5-14	35.7%
1	Megan Abrams	G 37:07	8-12	3-6	4-5	1 6 7	5 0	23	1	5	0	0	5	3PT%	1-7	14.3%
2	JaMya Mingo-Young	G 32:33	3-7	0-2	5-6	4 1 5	1 5	11	4	4	3	0	8	FT%	7-8	87.5%
5	Hannah Barber	G 28:43	4-8	3-7	1-2	0 3 3	1 1	12	3	3	3	0	1	2 nd FG%	9-13	69.2%
23	Brittany Davis	G 29:37	5-15	2-10	5-6	1 7 8	2 5	17	1	1	0	0	2	3PT%	2-4	50.0%
4	Taylor Sutton	21:09	1-3	0-1	1-2	0 3 3	2 3	3	3	6	0	0	2	FT%	3-4	75%
33	Khyla Wade-Warren	19:09	1-3	0-0	0-0	1 1 2	1 0	2	1	1	2	3	1	3 rd FG%	7-14	50.0%
15	Myra Gordon	10:51	0-1	0-0	0-0	0 3 3	1 0	0	1	2	0	0	1	3PT%	3-7	42.9%
20	Ruth Koang	00:40	0-0	0-0	0-0	0 0 0	0 0	0	0	0	0	0	0	FT%	5-7	71.4%
														4 th FG%	5-13	38.5%
														3PT%	2-8	25.0%
														FT%	2-4	50%
														GM FG%	26-54	48.1%
														3PT%	8-26	30.8%
														FT%	17-23	73.9%
														Dead Ball Rebounds: 2 0		
														Technical Fouls: NONE		

Technical Fouls: NONE

	UH	UA
Biggest lead	4 (1 st 0:12)	25 (4 th 5:35)
Best Scoring Run	15 (4 th 1:35)	11 (2 nd 2:18)
Lead Changes	2	8
Times Tied	5	
Time with Lead	05:15	30:33

Points from	UH	UA
Turnovers	17	14
Paint	42	34
Second Chance	9	8
Fast Breaks	16	13
Bench	26	5

Period by Period Scoring	1st	2nd	3rd	4th	TOT
UH	19	10	17	21	67
UA	18	23	17	14	72

Shooting By Period			
1 st	FG%	5-14	35.7%
	3PT%	1-7	14.3%
	FT%	7-8	87.5%
2 nd	FG%	9-13	69.2%
	3PT%	2-4	50.0%
	FT%	3-4	75%
3 rd	FG%	7-14	50.0%
	3PT%	3-7	42.9%
	FT%	5-7	71.4%
4 th	FG%	5-13	38.5%
	3PT%	2-8	25.0%
	FT%	2-4	50%
GM	FG%	26-54	48.1%
	3PT%	8-26	30.8%
	FT%	17-23	73.9%
Dead Ball Rebounds: 2-0			

Dead Ball Rebounds: 2, 0

AT CHATTANOOGA | DEC. 5, 2021

Alabama - 80		Record: 8-2												
NO.	Name	Min	FG M-A	3P M-A	FT M-A	Rebounds OR DR TOT	Fouls PF FD	TP	AS	TO	ST	Blocks BS BA	+/-	
31	Jada Rice	C 15:43	1-2	0-0	4-6	1 3 4	3 3	6	0	1	0	1 0 10	1 st FG% 8-14 57.1%	
1	Megan Abrams	G 30:56	4-9	1-3	0-0	0 2 2	2 1	9	1	2	0	0 0 14	3 ^{PT} % 0.2 0.0%	
2	JaMya Mingo-Young	G 29:13	9-15	0-2	8-9	5 6 11	1 7	26	2	1	2	0 0 7	FT% 5-6 83.3%	
5	Hannah Barber	G 20:46	2-7	1-4	0-0	0 3 3	1 1	5	3	0	0	0 0 15	2 nd FG% 5-13 38.5%	
23	Brittany Davis	G 21:25	3-8	0-4	3-5	0 3 3	2 3	9	2	1	4	0 0 18	3 ^{PT} % 2-7 28.6%	
33	Khyla Wade-Warren	20:50	4-5	1-1	2-4	2 4 6	3 2	11	0	1	0	2 0 10	FT% 0.2 0.0%	
4	Taylor Sutton	19:30	3-8	0-2	0-0	0 1 1	4 2	6	0	0	0	0 1 8	3 rd FG% 8-19 42.1%	
15	Myra Gordon	21:36	3-6	0-2	2-2	4 3 7	2 2	8	0	1	2	0 0 2	3 ^{PT} % 1-7 14.3%	
12	Allie Craig Cruce	05:25	0-0	0-0	0-0	1 1 2	0 0	0	0	2	0	0 0 -1	FT% 5-7 71.4%	
32	Nia Daniel	02:58	0-1	0-0	0-0	0 1 1	0 0	0	0	0	0	1 0 -3	4 th FG% 8-15 53.3%	
20	Ruth Koang	01:38	0-0	0-0	0-0	0 0 0	0 0	0	0	1	0	0 0 0	3 ^{PT} % 0.2 0.0%	
Team						0 2 2		0					FT% 9-11 81.8%	
Totals			29-61	3-18	19-26	13 29 42	18 21	80	8	10	8	4 1 16	GM FG% 29-61 47.5%	
Technical Fouls: NONE													3 ^{PT} % 3-18 16.7%	
													FT% 19-26 73.1%	
													Dead Ball Rebounds: 3.0	

Technical Fouls: NONE

Chattanooga - 64		Record: 1-8												
NO.	Name	Min	FG M-A	3P M-A	FT M-A	Rebounds OR DR TOT	Fouls PF FD	TP	AS	TO	ST	Blocks BS BA	+/-	
25	Abbey Cornelius	F 34:08	7-16	0-0	8-8	1 9 10	2 6	22	4	2	0	1 1	-16	
5	Sigrun Olafsdottir	G 29:27	2-6	0-1	0-0	0 0 0	4 1 4	4	3	0	0	1 1	-9	
10	Dena Jarrells	G 28:28	4-10	3-6	0-0	1 3 4	0 1	11	0	3	0	0 0	-10	
14	Amaria Pugh	G 27:10	4-8	1-3	3-4	1 2 3	2 5	12	1	3	0	0 1	-18	
22	Brooke Hampel	G 25:53	1-5	0-3	1-2	1 0 1	3 2 3	1	0	0	0	0 0	-7	
12	Destiny McClendon	17:57	2-6	0-1	4-4	1 1 2	3 2 8	1	0	0	0	0 0	-13	
31	Addie Porter	19:59	1-3	1-2	0-0	0 5 5	5 0 3	3	3	1	0	0 0	-8	
33	Karsen Murphy	08:44	0-0	0-0	1-2	0 1 1	0 1 1	0	0	0	0	0 0	-3	
15	Leah Jones	03:50	0-0	0-0	0-0	1 0 1	1 0 0	0	0	1	0	0 0	2	
2	Pare Pene	02:12	0-2	0-2	0-0	0 0 0	0 0 0	0	0	0	0	0 0	1	
13	Lara Habling	02:12	0-1	0-0	0-0	0 0 0	1 0 0	0	0	0	0	0 1	1	
Team						3 1 4		0	1					
Totals			21-57	5-18	17-20	9 22 31	21 18	64	13	11	0	1 4	-16	

Shooting By Period			
1st	FG%	6-11	54.5%
	3PT%	1-2	50.0%
	FT%	5-6	83.3%
2nd	FG%	6-14	42.9%
	3PT%	2-5	40.0%
	FT%	1-2	50%
3rd	FG%	3-16	18.8%
	3PT%	0-4	0.0%
	FT%	4-4	100%
4th	FG%	6-16	37.5%
	3PT%	2-7	28.6%
	FT%	7-8	87.5%
GM	FG%	21-57	36.5%
	3PT%	5-18	27.8%
	FT%	17-20	85.0%

Technical Fouls: NONE			
-----------------------	--	--	--

Technical Fouls: NONE

AT NO. 7/9 TENNESSEE | DEC. 30, 2021

Tennessee - 64		Record: 21-5 (10-3)														
NO.	Name	Min	FG M-A	3P M-A	FT M-A	Rebounds OR DR TOT	Fouls PF FD	TP	AS	TO	ST	Blocks BS BA	+/-	Shooting By Period		
2	Alexus Dye	F 22:27	1-4	0-0	3-4	3 2 5	3 2 5	0	1	1	0	0	3	1 st	FG% 5-14 35.7%	
20	Tamari Key	C 32:39	7-10	0-0	6-11	11 2 13	1 11 20	2	4	1	1	1	-23	3P%	2-5 40.0%	
4	Jordan Walker	G 27:20	2-6	0-2	3-6	0 5 5	4 3 7	7	1	1	2	0	0	FT%	2-3 66.7%	
21	Tess Darby	G 12:28	1-2	1-2	0-0	0 0 0	0 0 3	0	1	0	0	0	-11	2 nd	FG% 6-14 42.9%	
25	Jordan Horston	G 30:01	5-16	0-1	2-3	1 3 4	3 3 12	5	4	2	1	0	-7	3P%	1-3 33.3%	
0	Brooklyn Miles	18:47	0-1	0-0	0-0	1 4 5	0 0 0	0	2	1	1	0	-1	FT%	2-4 50%	
1	Sara Puckett	24:54	1-4	0-1	0-0	1 2 3	0 1 2	1	1	1	0	0	0	3 rd	FG% 6-18 33.3%	
12	Rae Burrell	27:45	5-15	2-6	1-2	1 3 4	4 1 13	0	1	0	0	0	-2	3P%	0-2 0.0%	
5	Kaiya Wynn	03:39	1-1	0-0	0-0	0 0 0	2 0 2	0	0	0	0	0	8	FT%	4-9 44.4%	
Team						0 1 1		0	0	0	0	0		4 th	FG% 6-13 46.2%	
Totals			23-59	3-12	15-26	18 22 40	17 21 64	11	14	7	2	3	-10	3P%	0-2 0.0%	
														FT%	7-10 70%	
														Technical Fouls:NONE		
														GM FG%	23-59 39.0%	
														3P%	3-12 25.0%	
														FT%	15-26 57.7%	

Shooting By Period		
1 st FG%	5-14	35.7%
3PT%	2-5	40.0%
FT%	2-3	66.7%
2 nd FG%	6-14	42.9%
3PT%	1-3	33.3%
FT%	2-4	50%
3 rd FG%	6-18	33.3%
3PT%	0-2	0.0%
FT%	4-9	44.4%
4 th FG%	6-13	46.2%
3PT%	0-2	0.0%
FT%	7-10	70%
GM FG%	23-59	39.0%
3PT%	3-12	25.0%
FT%	15-26	57.7%

Dead Ball Rebounds: 6, 0

Alabama - 74		Record: 13-11 (4-9)													Great Ball Periods: 0-0		
NO. Name		Min	FG M-A	3P M-A	FT M-A	Rebounds OR DR TOT	Fouls PF FD	TP	AS	TO	ST	Blocks BS BA	+/-	1 st FG%	2 nd FG%	3 rd FG%	4 th FG%
33 Khyla Wade-Warren	F	27:16	2-5	2-4	0-0	0 1 1	3 0 6	0	0	2	1	1	7	3PT%	2-9	22.2%	
1 Megan Abrams	G	37:37	9-14	2-4	7-7	0 5 5	1 5 27	1	2	1	0	0	7	FT%	0-0	0%	
2 JaMya Mingo-Young	G	39:13	2-9	0-1	4-6	4 6 10	2 7 8	5	3	6	0	1	8	2 nd FG%	7-13	53.8%	
5 Hannah Barber	G	31:01	3-8	2-7	0-0	0 2 2	4 0 8	2	2	1	0	0	0	3PT%	4-6	66.7%	
23 Brittany Davis	G	38:04	8-15	4-8	3-3	1 5 6	2 5 23	0	1	0	0	0	8	FT%	4-4	100%	
31 Jada Rice		12:42	0-2	0-0	0-0	0 1 1	4 0 0	1	0	0	0	2	3	3 rd FG%	9-17	52.9%	
4 Taylor Sutton		11:42	1-2	0-1	0-0	1 0 1	3 0 2	1	0	0	0	0	15	3PT%	4-8	50.0%	
12 Allie Craig Cruce		02:25	0-0	0-0	0-0	0 0 0	2 0 0	0	1	0	0	0	2	FT%	3-4	75%	
Team						2 3 5		0		1				4 th FG%	2-5	40.0%	
Totals			25-55	10-25	14-16	8 23 31	21 17 74	10	12	9	3	2	10	3PT%	0-2	0.0%	
Technical Fouls:NONE																	
GM FG% 25-55 45.5%																	
3PT% 10-25 40.0%																	
FT% 14-16 87.5%																	

Shooting By Period		
1 st FG%	7-20	35.0%
3PT%	2-9	22.2%
FT%	0-0	0%
2 nd FG%	7-13	53.8%
3PT%	4-6	66.7%
FT%	4-4	100%
3 rd FG%	9-17	52.9%
3PT%	4-8	50.0%
FT%	3-4	75%
4 th FG%	2-5	40.0%
3PT%	0-2	0.0%
FT%	7-8	87.5%
GM FG%	25-55	45.5%
3PT%	10-25	40.0%
FT%	14-16	87.5%

Dead Ball Rebounds: 2, 0

	UT	UA
Biggest lead	3 (1 st 3:39)	20 (4 th 9:34)
Best Scoring Run	8 (4 th 4:53)	11 (2 nd 2:56)
Lead Changes		
Times Tied	2	
Time with Lead	01:48	36:04

Points from	UT	UA
Turnovers	12	17
Paint	34	26
Second Chance	16	12
Fast Breaks	13	9
Bench	17	2

Period by Period Scoring					
	1st	2nd	3rd	4th	TOT
UT	14	15	16	19	64
UA	16	22	25	11	74

VS. AUBURN | JAN. 2, 2022

Auburn - 53		Record: 8-4 (0-1)															
NO.	Name	Min	FG M-A	3P M-A	FT M-A	Rebounds OR DR TOT	Fouls PF FD	TP	AS	TO	ST	Blocks BS BA	+/-	Shooting By Period			
14	Jala Jordan	F 20:38	1-8	0-2	0-0	1 4 5	4 0 2	0	0	0	0	1	7	1 st FG%	5-14	35.7%	
2	Sania Wells	G 31:18	2-10	1-3	4-4	0 4 4	4 4 9	2	3	1	1	2	-6	3PT%	2-5	40.0%	
3	Annie Hughes	G 36:51	2-7	1-5	0-1	1 1 2	1 3 5	0	1	2	0	0	-2	FT%	0-1	0.0%	
5	Aicha Coulibaly	G 37:05	5-12	0-0	7-10	4 8 12	3 9 17	3	7	0	0	1	4	2 nd FG%	3-11	27.3%	
23	Honesty Scott-Grayson	G 40:00	7-16	1-4	2-3	0 6 6	2 2 17	2	3	1	4	1	-3	3PT%	0-2	0.0%	
1	Xaria Wiggins	13:25	0-3	0-1	1-2	0 1 1	1 1 1	1	0	1	0	0	-6	FT%	3-4	75%	
10	Kiyae White	11:54	0-3	0-0	0-0	3 3 6	1 2 0	0	2	1	0	0	-11	3 rd FG%	5-20	25.0%	
12	Mar'shaun Bostic	08:49	1-1	0-0	0-0	0 1 1	4 0 2	0	1	0	0	0	2	3PT%	0-3	0.0%	
Team						4 2 6		0						FT%	2-4	50%	
Totals			18-60	3-15	14-20	13 30 43	20 21 53	7	18	5	5	6	-3	4 th FG%	5-15	33.3%	
														3PT%	1-5	20.0%	
														FT%	9-11	81.8%	
														GM FG%	18-60	30.0%	
														3PT%	3-15	20.0%	
														FT%	14-20	70.0%	
Technical Fouls:NONE																	

Shooting By Period		
1 st FG%	5-14	35.7%
3PT%	2-5	40.0%
FT%	0-1	0%
2 nd FG%	3-11	27.3%
3PT%	0-2	0.0%
FT%	3-4	75%
3 rd FG%	5-20	25.0%
3PT%	0-3	0.0%
FT%	2-4	50%
4 th FG%	5-15	33.3%
3PT%	1-5	20.0%
FT%	9-11	81.8%
GM FG%	18-60	30.0%
3PT%	3-15	20.0%
FT%	14-20	70.0%

Dead Ball Rebounds: 3, 0

Alabama - 56		Record: 10-3 (1-1)													Dead Ball Rebounds: 3	
NO.	Name	Min	FG M-A	3P M-A	FT M-A	Rebounds OR DR TOT	Fouls PF FD	TP	AS	TO	ST	Blocks BS BA	+/-	Shooting By Period		
31	Jada Rice	C 21:52	3-9	0-0	1-4	3 7 10	6 3 7	0	1	0	2	0	1	1 st FG%	5-17 29.4%	
1	Megan Abrams	G 38:53	2-15	0-4	5-10	1 5 6	0 6 9	2	4	1	0	1	0	3PT%	2-8 25.0%	
2	JaMya Mingo-Young	G 31:59	4-8	1-2	5-6	2 6 8	5 2 14	2	3	1	2	2	2	FT%	4-4 100.0%	
5	Hannah Barber	C 29:03	1-3	1-3	1-2	0 1 1	4 2 4	3	1	1	0	0	5	2 nd FG%	6-18 33.3%	
23	Brittany Davis	G 35:33	4-16	1-7	1-2	3 8 11	1 3 10	2	2	2	0	2	3	3PT%	0-1 0.0%	
33	Khyla Wade-Warren	10:48	0-3	0-1	1-2	2 1 3	3 2 1	0	1	0	1	0	3	FT%	4-7 57.1%	
15	Myra Gordon	04:27	0-0	0-0	0-0	0 0 0	0 0 0	0	0	0	0	0	5	3 rd FG%	3-11 27.3%	
32	Nia Daniel	08:43	1-1	1-1	0-0	0 0 0	1 0 3	0	0	0	0	0	3	3PT%	1-6 16.7%	
4	Taylor Sutton	11:31	2-2	0-0	1-1	1 3 4	0 1 5	0	1	1	0	0	-8	FT%	1-2 50.0%	
12	Allie Craig Cruce	07:11	1-1	0-0	1-2	1 0 1	2 1 3	0	1	0	1	0	1	4 th FG%	4-12 33.3%	
Team						1 1 2		0		1				3PT%	1-3 33.3%	
Totals			18-58	4-18	16-29	14 32 46	22 20 56	9	15	6	6	5	3	FT%	7-16 43.8%	
														GM FG%	18-58	31.0%
														3PT%	4-18	22.2%
														FT%	16-29	55.2%
Technical Fouls:Rice 4 th 3:05																

Shooting By Period		
1 st FG%	5-17	29.4%
3PT%	2-8	25.0%
FT%	4-4	100%
2 nd FG%	6-18	33.3%
3PT%	0-1	0.0%
FT%	4-7	57.1%
3 rd FG%	3-11	27.3%
3PT%	1-6	16.7%
FT%	1-2	50%
4 th FG%	4-12	33.3%
3PT%	1-3	33.3%
FT%	7-16	43.8%
GM FG%	18-58	31.0%
3PT%	4-18	22.2%
FT%	16-29	55.2%

Dead Ball Rebounds: 9, 0

	AU	UA
Biggest lead	4 (1 st 7:55)	13 (2 nd 1:53)
Best Scoring Run	6 (1 st 7:55)	6 (2 nd 8:52)
Lead Changes	4	
Times Tied	1	
Time with Lead	04:24	35:23

Points from		AU	UA
Turnovers		5	15
Paint		24	26
Second Chance		8	11
Fast Breaks		9	9
Bench		3	12

Period by Period Scoring					
	1st	2nd	3rd	4th	TOT
AU	12	9	12	20	53
UA	16	16	8	16	56

VS. NR/RV MISSISSIPPI STATE | JAN. 6, 2022

Mississippi St. - 65			Record: 10-4 (1-1)														
NO.	Name	Min	FG M-A	3P M-A	FT M-A	Rebounds OR DR TOT	Fouls PF FD	TP	AS	TO	ST	Blocks BS BA	+/-	Shooting By Period			
25	Denae Carter	F 33:52	3-4	0-0	0-2	3 7 10	4 1 6	0	3	0	0	0	0	1 st FG%	9-18 50.0%		
0	Anastasia Hayes	G 40:00	9-17	0-4	4-6	1 2 3	1 6 22	1	4	2	0	0	3	3PT%	1-7 14.3%		
1	Myah Taylor	G 36:47	6-12	1-3	1-2	0 1 1	1 2 14	6	1	7	2	2	7	FT%	1-2 50%		
2	Jerkaila Jordan	G 35:33	7-15	1-4	1-2	3 4 7	3 4 16	2	2	2	1	0	0	2 nd FG%	7-15 46.7%		
10	Aislynn Hayes	G 28:05	1-5	0-3	2-2	0 4 4	2 1 4	0	0	1	1	0	-7	3PT%	2-4 50.0%		
23	Caterion Thompson	19:35	1-6	1-4	0-0	2 0 2	0 0 3	0	0	0	0	0	9	FT%	1-2 50%		
44	Raven Farley	04:30	0-1	0-0	0-0	0 0 0	1 0 0	0	0	0	0	0	2	3 rd FG%	7-17 41.2%		
22	Charlotte Kohl	01:38	0-0	0-0	0-0	0 1 1	1 0 0	0	0	0	0	0	1	3PT%	0-4 0.0%		
Team							4 4 8	0	0	2			FT%	0-2 0.0%			
Totals			27-61	3-18	8-14	13 23 36	13 14 14	65	9	12	12	4	2	3	4 th FG%	4-11 36.4%	
														3PT%	0-3 0.0%		
														FT%	6-8 75%		
														GM FG%	27-61 44.3%		
														3PT%	3-18 16.7%		
														FT%	8-14 57.1%		
Technical Fouls: NONE																	

2021-22 COMBINED STATS

Game Records

Record	Overall	Home	Away	Neutral
ALL GAMES	14-12	10-6	4-5	0-1
CONFERENCE	5-10	2-5	3-5	0-0
NON-CONFERENCE	9-2	8-1	1-0	0-1

Score by Periods

Team	1st	2nd	3rd	4th	OT	TOT
Alabama	451	400	497	454	29	1831
Opponents	438	340	413	467	21	1679

Team Box Score

No.	Player				Total		3-Point		F-Throw		Rebounds											
		GP-GS	MIN	AVG	FG-FGA	FG%	3FG-3FGA	3FG%	FT-FTA	FT%	OFF	DEF	TOT	AVG	PF	DQ	A	TO	BLK	STL	PTS	AVG
23	DAVIS, Brittany	26-26	843:10	32.4	152-384	.396	69-207	.333	68-94	.723	54	130	184	7.1	46	0	37	56	1	35	441	17.0
1	ABRAMS, Megan	25-24	759:17	30.4	116-276	.420	35-103	.340	84-111	.757	12	75	87	3.5	23	0	34	57	2	31	351	14.0
2	MINGO-YOUNG, JaMya	26-26	795:25	30.6	102-217	.470	12-37	.324	74-105	.705	58	114	172	6.6	62	2	66	55	5	64	290	11.2
5	BARBER, Hannah	25-25	826:31	33.1	71-180	.394	56-138	.406	12-18	.667	4	58	62	2.5	41	0	71	39	1	24	210	8.4
31	RICE, Jada	26-21	550:06	21.2	60-136	.441	0-0	.000	32-55	.582	42	82	124	4.8	74	4	17	42	43	22	152	5.8
13	BLACKSHEAR, Kayla	3-0	30:40	10.2	4-6	.667	0-0	.000	7-8	.875	4	5	9	3.0	5	0	0	2	0	2	15	5.0
33	WADE-WARREN, Khyla	26-5	380:08	14.6	45-99	.455	9-34	.265	24-33	.727	24	31	55	2.1	54	3	8	36	17	13	123	4.7
4	SUTTON, Taylor	24-2	348:51	14.5	40-106	.377	8-36	.222	12-16	.750	6	21	27	1.1	39	1	29	35	0	12	100	4.2
32	DANIEL, Nia	16-0	190:09	11.9	16-54	.296	6-21	.286	13-16	.813	13	11	24	1.5	24	0	3	10	3	6	51	3.2
15	GORDON, Myra	24-1	295:58	12.3	16-55	.291	0-12	.000	9-15	.600	25	46	71	3.0	30	1	9	17	1	16	41	1.7
12	CRUCE, Allie Craig	21-0	145:10	6.9	11-27	.407	3-14	.214	10-14	.714	5	21	26	1.2	25	0	8	12	7	3	35	1.7
0	GRIZZLE, Ahriahna	7-0	49:08	7.0	4-11	.364	1-3	.333	0-0	.000	0	4	4	0.6	6	0	4	5	2	3	9	1.3
20	KOANG, Ruth	10-0	48:10	4.8	5-11	.455	0-0	.000	1-2	.500	5	6	11	1.1	6	0	0	6	1	2	11	1.1
45	CULLINAN, Taylor	6-0	10:58	1.8	0-3	.000	0-2	.000	2-2	1.000	1	0	1	0.2	3	0	0	0	0	1	2	0.3
Team											72	64	136					16				
Total		26	5274		642-1565	.410	199-607	.328	348-489	.712	325	668	993	38.2	438	11	286	388	83	234	1831	70.4
Opponents		26	5275		645-1575	.410	119-413	.288	270-420	.643	335	659	994	38.2	432	5	336	428	133	194	1679	64.6

Team Statistics

	BAMA	OPP
Scoring	1831	1679
Points per game	70.4	64.6
Scoring margin	+5.8	-
Field goals-att	642-1565	645-1575
Field goal pct	.410	.410
3 point fg-att	199-607	119-413
3-point FG pct	.328	.288
3-pt FG made per game	7.7	4.6
Free throws-att	348-489	270-420
Free throw pct	.712	.643
F-Throws made per game	13.4	10.4
Rebounds	993	994
Rebounds per game	38.2	38.2
Rebounding margin	0.0	-
Assists	286	336
Assists per game	11.0	12.9
Turnovers	388	428
Turnovers per game	14.9	16.5
Turnover margin	+1.5	-
Assist/turnover ratio	0.7	0.8
Steals	234	194
Steals per game	9.0	7.5
Blocks	83	133
Blocks per game	3.2	5.1
Winning streak	0	-
Home win streak	1	-
Attendance	29485	43702
Home games-Avg/Game	16-1843	9-4856
Neutral site-Avg/Game	-	1-2146

Team Results

Date	Opponent		Score	Att.
11/09/2021	Charleston So.	W	109-32	452
11/14/2021	Tulane	L	66-69	1792
11/17/2021	Southern Miss.	W	86-54	1784
11/21/2021	vs Duke	L	71-74	2146
11/24/2021	Mercer	W	55-48	792
11/26/2021	Western Caro.	W	77-43	1770
11/28/2021	Bethune-Cookman	W	89-45	1804
11/30/2021	Memphis	W	71-44	1742
12/03/2021	Houston	W	77-67	1877
12/05/2021	at Chattanooga	W	80-64	1425
12/13/2021	Sam Houston	W	84-50	2500
12/30/2021	at Tennessee	L	44-62	8124
01/02/2022	Auburn	W	56-53	2985
01/06/2022	Mississippi St.	L	62-65	1922
01/09/2022	at Georgia	L	68-72	3453
01/13/2022	at Ole Miss	L	56-86	1391
01/16/2022	Florida	L	77-85	2001
01/20/2022	Arkansas	L	71-99	1911
01/23/2022	at Auburn	W	75-68	4196
01/30/2022	Missouri	L	61-77	2103
02/03/2022	at South Carolina	L	51-83	11875
02/06/2022	at Vanderbilt	Wot	77-71	1992
02/13/2022	Kentucky	L	63-67	2049
02/17/2022	Tennessee	W	74-64	2001
02/20/2022	at Texas A&M	Wot2	81-79	3825
02/24/2022	at LSU	L	50-58	7421

2021-22 SOUTHEASTERN CONFERENCE COMBINED STATS

Game Records

Record	Overall	Home	Away	Neutral
ALL GAMES	5-10	2-5	3-5	0-0
CONFERENCE	5-10	2-5	3-5	0-0
NON-CONFERENCE	0-0	0-0	0-0	0-0

Score by Periods

Team	1st	2nd	3rd	4th	OT	TOT
Alabama	227	211	263	236	29	966
Opponents	282	220	268	298	21	1089

Team Box Score

No.	Player				Total		3-Point		F-Throw		Rebounds											
		GP-GS	MIN	AVG	FG-FGA	FG%	3FG-3FGA	3FG%	FT-FTA	FT%	OFF	DEF	TOT	AVG	PF	DQ	A	TO	BLK	STL	PTS	AVG
23	DAVIS, Brittany	15-15	549:51	36.7	94-243	.387	43-123	.350	36-51	.706	26	81	107	7.1	29	0	23	41	1	14	267	17.8
1	ABRAMS, Megan	14-13	455:28	32.5	63-165	.382	13-51	.255	52-69	.754	5	44	49	3.5	14	0	23	35	1	18	191	13.6
2	MINGO-YOUNG, JaMya	15-15	511:29	34.1	57-125	.456	9-23	.391	45-64	.703	32	70	102	6.8	40	1	32	35	4	32	168	11.2
5	BARBER, Hannah	14-14	521:08	37.2	45-113	.398	33-84	.393	4-8	.500	4	37	41	2.9	30	0	32	29	1	12	127	9.1
33	WADE-WARREN, Khyla	15-5	243:38	16.2	23-56	.411	6-25	.240	15-19	.789	11	14	25	1.7	38	2	4	27	8	7	67	4.5
31	RICE, Jada	15-10	324:37	21.6	23-69	.333	0-0	.000	14-28	.500	26	42	68	4.5	49	3	11	24	27	13	60	4.0
4	SUTTON, Taylor	13-2	180:56	13.9	17-50	.340	5-21	.238	1-2	.500	3	9	12	0.9	24	1	10	19	0	5	40	3.1
32	DANIEL, Nia	7-0	75:23	10.8	6-21	.286	2-7	.286	1-1	1.000	5	2	7	1.0	5	0	0	4	1	2	15	2.1
12	CRUCE, Allie Craig	12-0	70:05	5.8	5-16	.313	1-7	.143	4-6	.667	2	6	8	0.7	17	0	1	3	4	0	15	1.3
15	GORDON, Myra	13-1	138:54	10.7	6-26	.231	0-4	.000	4-7	.571	14	12	26	2.0	16	1	3	6	1	6	16	1.2
0	GRIZZLE, Ahriahna	1-0	01:20	1.3	0-0	.000	0-0	.000	0-0	.000	0	0	0	0.0	0	0	0	0	0	0	0	0.0
45	CULLINAN, Taylor	2-0	02:11	1.1	0-0	.000	0-0	.000	0-0	.000	0	0	0	0.0	2	0	0	0	0	0	0	0.0
Team											50	33	83					12				
Total		15	3075		339-884	.383	112-345	.325	176-255	.690	178	350	528	35.2	264	8	139	235	48	109	966	64.4
Opponents		15	3075		422-934	.452	76-249	.305	169-259	.653	202	397	599	39.9	237	1	232	214	91	120	1089	72.6

Team Statistics

	BAMA	OPP
Scoring	966	1089
Points per game	64.4	72.6
Scoring margin	-8.2	-
Field goals-att	339-884	422-934
Field goal pct	.383	.452
3 point fg-att	112-345	76-249
3-point FG pct	.325	.305
3-pt FG made per game	7.5	5.1
Free throws-att	176-255	169-259
Free throw pct	.690	.653
F-Throws made per game	11.7	11.3
Rebounds	528	599
Rebounds per game	35.2	39.9
Rebounding margin	-4.7	-
Assists	139	232
Assists per game	9.3	15.5
Turnovers	235	214
Turnovers per game	15.7	14.3
Turnover margin	-1.4	-
Assist/turnover ratio	0.6	1.1
Steals	109	120
Steals per game	7.3	8.0
Blocks	48	91
Blocks per game	3.2	6.1
Winning streak	0	-
Home win streak	1	-
Attendance	14972	42277
Home games-Avg/Game	7-2139	8-5285
Neutral site-Avg/Game	-	0-0

Team Results

Date	Opponent		Score	Att.
12/30/2021	at Tennessee	L	44-62	8124
01/02/2022	Auburn	W	56-53	2985
01/06/2022	Mississippi St.	L	62-65	1922
01/09/2022	at Georgia	L	68-72	3453
01/13/2022	at Ole Miss	L	56-86	1391
01/16/2022	Florida	L	77-85	2001
01/20/2022	Arkansas	L	71-99	1911
01/23/2022	at Auburn	W	75-68	4196
01/30/2022	Missouri	L	61-77	2103
02/03/2022	at South Carolina	L	51-83	11875
02/06/2022	at Vanderbilt	Wot	77-71	1992
02/13/2022	Kentucky	L	63-67	2049
02/17/2022	Tennessee	W	74-64	2001
02/20/2022	at Texas A&M	Wot2	81-79	3825
02/24/2022	at LSU	L	50-58	7421



JUNIOR

AHRIAHNA GRIZZLE

#0 | GUARD | 5-9

TORONTO, CANADA

BILL CROTHERS SECONDARY SCHOOL

CAREER HIGHLIGHTS

- 2021 SEC Academic Honor Roll
- 2020 SEC First-Year Academic Honor Roll

GAME-BY-GAME

Opponents	Min.	FG	3P	FT	O-D-T	PF	Pts	A	TO	Stl	Blk
Charleston Southern	17:39	3-7	0-2	0-0	0-1-1	3	6	1	1	2	1
Tulane	02:33	0-1	0-0	0-0	0-1-1	1	0	1	0	0	0
Southern Miss					DNP						
vs. Duke					DNP						
Mercer					DNP						
Western Carolina	04:36	1-1	1-1	0-0	0-1-1	0	3	0	1	0	0
Bethune-Cookman	15:35	0-2	0-0	0-0	0-1-1	1	0	2	3	0	1
Memphis	05:06	0-0	0-0	0-0	0-0-0	1	0	0	0	1	0
Houston					DNP						
at Chattanooga					DNP						
Sam Houston	02:19	0-0	0-0	0-0	0-0-0	0	0	0	0	0	0
at Little Rock					Canceled						
Winthrop					Canceled						
at No. 7/9 Tennessee	01:20	0-0	0-0	0-0	0-0-0	0	0	0	0	0	0
Auburn					DNP						
Mississippi State					DNP						
at No. 15/14 Georgia					DNP						
at RV/RV Ole Miss					DNP						
Florida					DNP						
Arkansas					DNP						
at Auburn					DNP						
RV/NR Missouri					DNP						
at No. 1/1 South Carolina					DNP						
at Vanderbilt					DNP						
Kentucky					DNP						
No. 12/8 Tennessee					DNP						
at Texas A&M					DNP						
at No.8/8 LSU					DNP						
Vanderbilt											

CAREER HIGHS

Points	6	Charleston Southern (11/9/21)
Rebounds	1	7X, last Bethune-Cookman (11/28/21)
Assists	2	2X, last Bethune-Cookman (11/28/21)
Steals	2	2X, last Charleston Southern (11/9/21)
Blocks	1	2X, last Bethune-Cookman (11/28/21)
Minutes	18	Charleston Southern (11/9/21)
Field Goals	3	Charleston Southern (11/9/21)
FG Att.	7	Charleston Southern (11/9/21)
3-Point FG	1	2X, last Western Carolina (11/26/21)
3-Point Att.	2	Charleston Southern (11/9/21)
Free Throws	2	Nicholls (12/16/20)
FT Att.	2	2X, last vs. Nicholls (12/16/20)

2021-22 SEASON HIGHS

Points	6	Charleston Southern (11/9/21)
Rebounds	1	4X, last Bethune-Cookman (11/28/21)
Assists	2	Bethune-Cookman (11/28/21)
Steals	2	Charleston Southern (11/9/21)
Blocks	1	2X, last Bethune-Cookman (11/28/21)
Minutes	18	Charleston Southern (11/9/21)
Field Goals	3	Charleston Southern (11/9/21)
FG Att.	7	Charleston Southern (11/9/21)
3-Point FG	1	Western Carolina (11/26/21)
3-Point Att.	2	Charleston Southern (11/9/21)
Free Throws		
FT Att.		

MISCELLANEOUS STATS

CATEGORY	2021-22	CAREER
Games Started		
Double-digit scoring		
20+ point games		
Double-digit rebounding		
Double-doubles		
Led UA in scoring		
Led UA in rebounding		
Led UA in assists		
Led UA in steals	1	1
Led UA in blocks	2	2

CAREER STATS

Year	GP	GS	Min	Avg	FG	FGA	Pct	3FG	3FGA	Pct	FT	FTA	Pct	Off	Def	Tot	Avg	PF	FO	A	TO	Blk	Stl	Pts	Avg
2019-20	7	0	34	4.8	3	11	.273	1	3	.333	0	0	.000	0	3	3	0.4	3	0	1	0	0	2	7	1.0
2020-21	6	0	25	4.2	1	4	.250	0	1	.000	3	4	.750	0	0	0	0.0	0	0	2	4	0	2	5	0.8
2021-22	7	0	49	7.0	4	11	.364	1	3	.333	0	0	.000	0	4	4	0.6	6	0	4	5	2	3	9	1.3
TOTALS	20	0	108	5.4	8	26	.308	2	7	.286	3	4	.750	0	7	7	0.4	9	0	7	9	2	7	21	1.1



MEGAN ABRAMS
#1 | GUARD | 5-9
LAFAYETTE, LA.
LAFAYETTE CHRISTIAN ACADEMY

CAREER HIGHLIGHTS

- 2021-22 SEC Women's Basketball Leadership Council representative
- 2021 SEC Academic Honor Roll
- 2020 SEC Academic Honor Roll
- 2019 SEC First-Year Honor Roll
- Started the last 69 consecutive games for Alabama

GAME-BY-GAME

Opponents	Min.	FG	3P	FT	O-D-T	PF	Pts	A	TO	Stl	Blk
Charleston Southern	08:45	1-3	0-2	0-0	0-0-0	1	2	1	0	2	0
Tulane	36:17	5-17	4-9	7-8	0-4-4	2	21	2	5	1	0
Southern Miss	20:08	0-1	0-1	2-2	0-0-0	0	2	0	0	1	0
vs. Duke	30:47	10-18	3-4	4-5	2-5-7	1	27	1	2	2	1
Mercer	37:03	5-14	4-9	3-4	1-4-5	1	17	1	1	2	0
Western Carolina	26:48	5-8	4-6	3-4	0-2-2	0	17	2	3	2	0
Bethune-Cookman	16:23	3-8	0-4	1-2	1-4-5	2	7	0	2	3	0
Memphis	31:16	5-11	1-5	3-4	1-3-4	0	14	1	2	0	0
Houston	37:07	8-12	3-6	4-5	1-6-7	0	23	1	5	0	0
at Chattanooga	30:56	4-9	1-3	0-0	0-2-2	2	9	1	2	0	0
Sam Houston	28:19	7-10	2-3	5-8	1-1-2	0	21	1	0	0	0
at Little Rock					Canceled						
Winthrop					Canceled						
at No. 7/9 Tennessee	08:18	0-2	0-1	0-0	0-0-0	2	0	0	1	0	0
Auburn	38:53	2-15	0-4	5-10	1-5-6	0	9	2	4	1	0
Mississippi State	35:47	4-15	3-9	3-4	0-1-1	1	14	3	5	1	0
at No. 15/14 Georgia	33:30	0-8	0-4	8-9	0-4-4	2	8	4	3	4	0
at RV/RV Ole Miss	31:13	2-5	1-1	1-2	0-2-2	0	6	3	2	1	0
Florida	33:51	9-14	1-2	3-5	0-7-7	0	22	2	2	1	0
Arkansas					DNP						
at Auburn	21:44	3-4	0-0	4-6	0-1-1	1	10	2	0	1	0
RV/NR Missouri	37:40	6-15	2-6	0-0	1-1-2	1	14	1	2	1	0
at No. 1/1 South Carolina	21:25	1-10	0-3	2-2	1-0-1	0	4	0	1	1	0
at Vanderbilt	36:14	6-10	0-3	2-5	0-4-4	3	14	3	3	2	0
Kentucky	36:13	7-17	1-4	6-6	0-4-4	2	21	0	4	1	0
No. 12/8 Tennessee	37:37	9-14	2-4	7-7	0-5-5	1	27	1	2	1	0
at Texas A&M	46:26	9-23	0-4	8-9	2-6-8	1	26	1	2	3	0
at No.8/8 LSU	36:36	5-13	3-6	3-4	0-4-4	1	16	1	4	0	1
Vanderbilt											

CAREER HIGHS

Points	27	2X, last Tennessee (2/17/22)
Rebounds	9	2X, last at Florida (2/18/21)
Assists	7	Mississippi State (2/21/21)
Steals	5	at Florida (2/18/21)
Blocks	1	11X, last Duke (11/21/21)
Minutes	46	at Texas A&M (2/20/22)
Field Goals	10	Duke (11/21/21)
FG Att.	23	at Texas A&M (2/20/22)
3-Point FG	4	3X, last Western Carolina (11/26/21)
3-Point Att.	9	3X, last Mississippi State (1/6/22)
Free Throws	8	2X, last at Georgia (1/9/22)
FT Att.	10	Auburn (1/2/22)

2021-22 SEASON HIGHS

Points	27	2X, last Tennessee (2/17/22)
Rebounds	8	at Texas A&M (2/20/22)
Assists	4	at Georgia (1/9/22)
Steals	4	at Georgia (1/9/22)
Blocks	1	Duke (11/21/21)
Minutes	46	at Texas A&M (2/20/22)
Field Goals	10	Duke (11/21/21)
FG Att.	23	at Texas A&M (2/20/22)
3-Point FG	4	3X, last Western Carolina (11/26/21)
3-Point Att.	9	3X, last Mississippi State (1/6/22)
Free Throws	8	at Georgia (1/9/22)
FT Att.	10	Auburn (1/2/22)

MISCELLANEOUS STATS

CATEGORY	2021-22	CAREER
Games Started	24	99
Double-digit scoring	16	35
20+ point games	8	9
Double-digit rebounding		
Double-doubles		
Led UA in scoring	10	12
Led UA in rebounding	1	4
Led UA in assists	4	18
Led UA in steals	6	19
Led UA in blocks	1	5

CAREER STATS

Year	GP	GS	Min	Avg	FG	FGA	Pct	3FG	3FGA	Pct	FT	FTA	Pct	Off	Def	Tot	Avg	PF	FO	A	TO	Blk	Stl	Pts	Avg
2018-19	29	18	565	19.5	41	134	.306	5	34	.147	25	30	.833	9	42	51	1.8	29	0	41	40	2	14	112	3.9
2019-20	30	30	704	23.5	74	182	.407	7	38	.184	55	73	.753	11	65	76	2.5	29	0	55	58	3	12	210	7.0
2020-21	27	27	830	30.7	72	190	.379	20	57	.351	55	79	.693	12	106	118	4.4	43	1	66	63	5	26	219	8.1
2021-22	25	24	759	30.4	116	276	.420	35	103	.340	84	111	.757	12	75	87	3.5	23	0	34	57	2	31	351	14.0
TOTALS	111	99	2859	25.8	303	782	.387	67	232	.289	219	293	.747	44	288	332	3.0	124	1	196	218	12	83	892	8.0



JUNIOR

JAMYA MINGO-YOUNG

#2 | GUARD | 5-8

BOGALUSA, LA.
MISSISSIPPI STATE

GAME-BY-GAME

Opponents	Min.	FG	3P	FT	O-D-T	PF	Pts	A	TO	Stl	Blk
Charleston Southern	20:30	4-6	1-2	3-4	2-5-7	0	12	5	1	1	1
Tulane	32:47	3-8	1-2	1-1	3-4-7	4	8	3	4	6	0
Southern Miss	25:10	6-13	0-2	0-2	6-6-12	4	12	3	0	4	0
vs. Duke	33:42	3-8	0-0	3-4	0-3-3	5	9	3	3	5	0
Mercer	18:38	1-5	0-1	0-2	0-3-3	2	2	2	3	1	0
Western Carolina	18:24	0-2	0-2	2-4	1-0-1	1	2	1	1	2	0
Bethune-Cookman	20:21	6-9	0-0	4-6	1-3-4	0	16	5	0	4	0
Memphis	30:16	4-9	1-1	0-0	2-4-6	3	9	4	1	2	0
Houston	32:33	3-7	0-2	5-6	4-1-5	1	11	4	4	3	0
at Chattanooga	29:13	9-15	0-2	8-9	5-6-11	1	26	2	1	2	0
Sam Houston	22:21	6-10	0-0	3-3	2-9-11	1	15	2	2	2	0
at Little Rock					Canceled						
Winthrop					Canceled						
at No. 7/9 Tennessee	37:37	4-11	2-3	1-2	1-5-6	0	11	1	2	1	0
Auburn	31:59	4-8	1-2	5-6	2-6-8	5	14	2	3	1	2
Mississippi State	31:01	3-6	0-1	0-0	2-4-6	4	6	4	2	0	0
at No. 15/14 Georgia	19:12	1-2	0-0	0-0	3-2-5	2	2	0	3	0	0
at RV/RV Ole Miss	24:40	2-4	0-0	4-6	1-3-4	4	8	2	1	1	1
Florida	37:28	6-14	1-3	5-6	1-6-7	2	18	1	2	4	0
Arkansas	36:29	10-13	2-3	0-0	3-2-5	1	22	1	4	1	0
at Auburn	31:54	0-1	0-0	6-8	2-3-5	2	6	0	2	1	0
RV/NR Missouri	29:40	5-11	1-3	4-5	1-2-3	3	15	2	1	2	0
at No. 1/1 South Carolina	30:30	3-10	0-1	3-4	4-7-11	1	9	2	0	2	0
at Vanderbilt	42:39	5-11	0-2	10-14	2-4-6	3	20	1	3	6	0
Kentucky	36:42	6-10	2-3	2-2	2-8-10	3	16	4	2	2	0
No. 12/8 Tennessee	39:13	2-9	0-1	4-6	4-6-10	2	8	5	3	6	0
at Texas A&M	44:26	5-10	0-0	1-3	3-7-10	4	11	4	4	2	0
at No. 8/8 LSU	38:00	1-5	0-1	0-2	1-5-6	4	2	3	3	3	1
Vanderbilt											

CAREER HIGHS

Points	26	at Chattanooga (12/3/21)
Rebounds	12	Southern Miss (11/17/21)
Assists	9	Troy (12/14/20)
Steals	6	3X, last Tennessee (2/17/22)
Blocks	2	2X, last Auburn (1/2/22)
Minutes	44	at Texas A&M (2/20/22)
Field Goals	10	Arkansas (1/20/22)
FG Att.	15	at Chattanooga (12/3/21)
3-Point FG	2	5X, last Kentucky (2/13/22)
3-Point Att.	3	7X, last Florida (1/16/22)
Free Throws	10	at Vanderbilt (2/6/22)
FT Att.	14	at Vanderbilt (2/6/22)

2021-22 SEASON HIGHS

Points	26	at Chattanooga (12/3/21)
Rebounds	12	Southern Miss (11/17/21)
Assists	5	3X, last Tennessee (2/17/22)
Steals	6	3X, last Tennessee (2/17/22)
Blocks	2	Auburn (1/2/22)
Minutes	44	at Texas A&M (2/20/22)
Field Goals	10	last Arkansas (1/20/22)
FG Att.	15	at Chattanooga (12/3/21)
3-Point FG	2	3X, last Kentucky (2/13/22)
3-Point Att.	3	5X, last Kentucky (2/13/22)
Free Throws	10	at Vanderbilt (2/6/22)
FT Att.	14	at Vanderbilt (2/6/22)

MISCELLANEOUS STATS

CATEGORY	2021-22	CAREER (UA)
Games Started	26	26
Double-digit scoring	14	14
20+ point games	3	3
Double-digit rebounding	7	7
Double-doubles	5	5
Led UA in scoring	5	5
Led UA in rebounding	9	9
Led UA in assists	11	11
Led UA in steals	14	14
Led UA in blocks	3	3

CAREER STATS

Year	GP	GS	Min	Avg	FG	FGA	Pct	3FG	3FGA	Pct	FT	FTA	Pct	Off	Def	Tot	Avg	PF	FO	A	TO	Blk	Stl	Pts	Avg
2019-20 (MSU)	32	1	417	13.0	50	120	.417	5	17	.294	38	45	.844	19	51	70	2.2	55	0	48	34	5	28	143	4.5
2020-21 (MSU)	19	11	444	23.3	35	84	.417	6	22	.273	30	47	.638	17	58	75	3.9	45	1	57	31	6	22	106	5.6
2021-22	26	26	795	30.6	102	217	.470	12	37	.324	74	105	.705	58	114	172	6.6	62	2	66	55	5	64	290	11.2
TOTALS	77	38	1656	21.5	187	421	.444	23	76	.303	142	197	.721	94	223	317	4.1	162	3	171	120	16	114	539	7.0



TAYLOR SUTTON
#4 | GUARD | 5-4
ATLANTA, GA.
MIDDLE TENNESSEE

CAREER HIGHLIGHTS

- 2019 Conference USA Freshman of the Year
- 2019 Conference USA All-Freshman Team
- USBWA National Freshman of the Week (12/11/18)
- 2018 Lady Rebel Roundup MVP

GAME-BY-GAME

Opponents	Min.	FG	3P	FT	O-D-T	PF	Pts	A	TO	Stl	Blk
Charleston Southern	18:23	3-7	0-1	7-9	0-1-1	0	13	3	0	0	0
Tulane	00:54	0-0	0-0	0-0	0-0-0	0	0	0	0	0	0
Southern Miss	18:24	3-5	1-2	1-1	0-2-2	3	8	4	4	2	0
vs. Duke	13:26	2-8	1-2	0-0	2-0-2	3	5	0	1	0	0
Mercer	07:45	0-1	0-1	0-0	0-1-1	0	0	0	0	1	0
Western Carolina	16:56	0-2	0-0	0-0	0-1-1	0	0	1	1	1	0
Bethune-Cookman	24:32	5-10	1-4	1-1	0-2-2	1	12	6	2	3	0
Memphis	10:48	1-4	0-1	0-0	0-0-0	1	2	0	1	0	0
Houston	21:09	1-3	0-1	1-2	0-3-3	2	3	3	6	0	0
at Chattanooga	19:30	3-8	0-2	0-0	0-1-1	4	6	0	0	0	0
Sam Houston	16:09	5-8	0-1	1-1	1-1-2	1	11	2	1	0	0
at Little Rock					Canceled						
Winthrop					Canceled						
at No. 7/9 Tennessee					DNP						
Auburn	11:31	2-2	0-0	1-1	1-3-4	0	5	0	1	1	0
Mississippi State	08:19	0-1	0-1	0-0	0-0-0	1	0	3	2	1	0
at No. 15/14 Georgia	28:32	5-8	3-4	0-1	1-1-2	4	13	1	4	0	0
at RV/RV Ole Miss	21:37	1-7	0-2	0-0	0-2-2	2	2	0	5	1	0
Florida	25:15	3-11	0-3	0-0	0-0-0	5	6	1	1	1	0
Arkansas	10:14	0-4	0-3	0-0	0-1-1	1	0	0	1	0	0
at Auburn	14:42	2-3	1-1	0-0	0-1-1	4	5	0	3	0	0
RV/NR Missouri					DNP						
at No. 1/1 South Carolina	11:25	1-5	0-0	0-0	0-0-0	0	2	1	0	0	0
at Vanderbilt	13:36	1-2	1-2	0-0	0-0-0	1	3	1	0	0	0
Kentucky	06:54	0-0	0-0	0-0	0-0-0	0	0	1	1	0	0
No. 12/8 Tennessee	11:42	1-2	0-1	0-0	1-0-1	3	2	1	0	0	0
at Texas A&M	10:04	1-3	0-2	0-0	0-1-1	2	2	1	1	1	0
at No.8/8 LSU	07:16	0-2	0-2	0-0	0-0-0	1	0	0	0	0	0
Vanderbilt											

CAREER HIGHS

Points	27	Auburn (11/29/19)
Rebounds	8	at Marshall (1/9/20)
Assists	6	Bethune-Cookman (11/28/21)
Steals	4	2X, last Fla. Atlantic (1/16/20)
Blocks	1	5X
Minutes	29	USC Upstate (12/2/20)
Field Goals	10	at Southern Miss (1/25/20)
FG Att.	22	at Tulane (11/14/19)
3-Point FG	7	at Tulane (11/14/19)
3-Point Att.	19	at Tulane (11/14/19)
Free Throws	7	2X, last Charleston Southern (11/9/21)
FT Att.	9	2X, last Charleston Southern (11/9/21)

2021-22 SEASON HIGHS

Points	13	2X, last at Georgia (1/9/22)
Rebounds	4	Auburn (1/2/22)
Assists	6	Bethune-Cookman (11/28/21)
Steals	3	Bethune-Cookman (11/28/21)
Blocks		
Minutes	29	at Georgia (1/9/22)
Field Goals	5	3X, last at Georgia (1/9/22)
FG Att.	11	Florida (1/16/22)
3-Point FG	3	at Georgia (1/9/22)
3-Point Att.	4	2X, last at Georgia (1/9/22)
Free Throws	7	Charleston Southern (11/9/21)
FT Att.	9	Charleston Southern (11/9/21)

MISCELLANEOUS STATS

CATEGORY	2021-22	CAREER (UA)
Games Started	2	2
Double-digit scoring	4	4
20+ point games		
Double-digit rebounding		
Double-doubles		
Led UA in scoring		
Led UA in rebounding		
Led UA in assists	2	2
Led UA in steals	2	3
Led UA in blocks		

CAREER STATS

Year	GP	GS	Min	Avg	FG	FGA	Pct	3FG	3FGA	Pct	FT	FTA	Pct	Off	Def	Tot	Avg	PF	FO	A	TO	Blk	Stl	Pts	Avg
2018-19 (MT)	34	33	851	25.0	134	359	.373	65	170	.382	33	45	.733	10	35	45	1.3	88	5	55	81	3	28	366	10.8
2019-20 (MT)	30	30	1076	35.9	134	374	.358	75	227	.330	35	46	.761	23	65	88	2.9	84	4	40	83	2	40	378	12.6
2020-21	20	0	179	9.0	19	50	.380	10	27	.370	1	2	.500	2	8	10	0.5	16	0	11	11	0	7	49	2.5
2021-22	24	2	349	14.5	40	106	.377	8	36	.222	12	16	.750	6	21	27	1.1	39	1	29	35	0	12	100	4.2
TOTALS	108	65	2455	22.7	327	889	.368	158	460	.343	81	109	.743	41	129	170	1.6	227	10	135	210	5	87	893	8.3



SENIOR

HANNAH BARBER

#5 | GUARD | 5-6

HOMEWOOD, ALA.
HOMEWOOD HS

CAREER HIGHLIGHTS

- No. 26 in the nation and No. 2 in the SEC in assist/turnover ratio (2.69)
- 2021 SEC Academic Honor Roll
- 2020 SEC Academic Honor Roll
- 2019 SEC First-Year Academic Honor Roll

GAME-BY-GAME

Opponents	Min.	FG	3P	FT	O-D-T	PF	Pts	A	TO	Stl	Blk
Charleston Southern	21:13	1-2	1-2	0-0	0-3-3	0	3	4	2	0	0
Tulane	39:09	3-9	3-7	0-0	0-3-3	2	9	3	0	1	0
Southern Miss	29:44	3-8	3-8	2-2	0-2-2	2	11	3	2	2	0
vs. Duke	25:17	1-5	1-2	0-0	0-0-0	2	3	1	0	0	0
Mercer	32:55	1-4	1-3	0-0	0-2-2	1	3	6	1	2	0
Western Carolina	25:12	2-8	2-7	2-2	0-2-2	1	8	5	0	1	0
Bethune-Cookman	19:35	1-2	1-2	2-2	0-1-1	0	5	3	1	0	0
Memphis	28:14	4-6	4-6	1-2	0-1-1	0	13	4	0	1	0
Houston	28:43	4-8	3-7	1-2	0-3-3	1	12	3	3	3	0
at Chattanooga	30:46	2-7	1-4	0-0	0-3-3	1	5	3	0	0	0
Sam Houston	24:36	4-8	3-6	0-0	0-1-1	1	11	4	1	2	0
at Little Rock					Canceled						
Winthrop					Canceled						
at No. 7/9 Tennessee	39:13	3-15	2-11	0-0	1-5-6	1	8	2	1	0	0
Auburn	29:03	1-3	1-3	1-2	0-1-1	4	4	3	1	1	0
Mississippi State	39:27	7-11	5-8	0-0	0-2-2	2	19	0	3	0	0
at No. 15/14 Georgia	39:07	4-6	4-5	0-0	0-0-0	1	12	4	2	4	0
at RV/RV Ole Miss	35:46	3-8	1-4	1-2	0-2-2	2	8	1	1	1	0
Florida					DNP						
Arkansas	38:44	3-8	3-6	0-0	0-2-2	4	9	5	3	1	0
at Auburn	37:29	2-7	2-7	1-2	0-5-5	2	7	3	5	1	1
RV/NR Missouri	38:02	5-13	2-5	0-0	1-3-4	2	12	2	3	1	0
at No. 1/1 South Carolina	29:50	3-8	2-5	0-0	0-2-2	0	8	0	2	0	0
at Vanderbilt	16:38	2-4	2-4	0-0	0-3-3	2	6	2	2	1	0
Kentucky	36:28	2-7	1-6	0-0	0-3-3	2	5	0	3	0	0
No. 12/8 Tennessee	31:01	3-8	2-7	0-0	0-2-2	4	8	2	2	1	0
at Texas A&M	46:31	3-6	3-5	1-2	1-4-5	2	10	5	1	1	0
at No.8/8 LSU	38:08	4-9	3-8	0-0	1-3-4	2	11	3	0	0	0
Vanderbilt											

CAREER HIGHS

Points	22	at Oklahoma State (12/5/20)
Rebounds	6	2X, last Tennessee (12/30/21)
Assists	11	at Auburn (2/14/21)
Steals	4	at Georgia (1/9/22)
Blocks	1	2X, last Auburn (1/23/22)
Minutes	47	at Texas A&M (2/20/22)
Field Goals	7	Mississippi State (1/6/22)
FG Att.	15	at Tennessee (12/30/21)
3-Point FG	5	Mississippi State (1/6/22)
3-Point Att.	11	at Tennessee (12/30/21)
Free Throws	6	at Oklahoma State (12/5/20)
FT Att.	6	at Oklahoma State (12/5/20)

2021-22 SEASON HIGHS

Points	19	Mississippi State (1/6/22)
Rebounds	6	at Tennessee (12/30/21)
Assists	6	Mercer (11/24/21)
Steals	4	at Georgia (1/9/22)
Blocks	1	at Auburn (1/23/22)
Minutes	47	at Texas A&M (2/20/22)
Field Goals	7	Mississippi State (1/6/22)
FG Att.	15	at Tennessee (12/30/21)
3-Point FG	5	Mississippi State (1/6/22)
3-Point Att.	11	at Tennessee (12/30/21)
Free Throws	2 3X, last Bethune-Cookman (11/28/21)	
FT Att.	2	9X, at Texas A&M (2/20/22)

MISCELLANEOUS STATS

CATEGORY	2021-22	CAREER
Games Started	25	56
Double-digit scoring	9	13
20+ point games		1
Double-digit rebounding		
Double-doubles		
Led UA in scoring	1	1
Led UA in rebounding		
Led UA in assists	13	32
Led UA in steals	5	15
Led UA in blocks	1	2

CAREER STATS

Year	GP	GS	Min	Avg	FG	FGA	Pct	3FG	3FGA	Pct	FT	FTA	Pct	Off	Def	Tot	Avg	PF	FO	A	TO	Blk	Stl	Pts	Avg
2018-19	30	6	296	9.9	13	44	.295	8	32	.250	2	2	1.000	2	14	16	0.5	19	0	40	31	0	11	36	1.2
2019-20	30	0	235	7.8	16	39	.410	14	26	.538	8	10	.800	1	21	22	0.7	16	0	20	19	0	4	54	1.8
2020-21	27	25	838	31.1	54	168	.321	38	120	.317	17	24	.708	6	50	56	2.1	54	1	107	45	1	21	163	6.0
2021-22	25	25	827	33.1	71	180	.394	56	138	.406	12	18	.667	4	58	62	2.5	41	0	71	39	1	24	210	8.4
TOTALS	112	56	2195	19.6	154	431	.357	116	316	.367	39	54	.722	13	143	156	1.4	130	1	238	134	2	60	463	4.1



GRADUATE **ALLIE CRAIG CRUCE**
#12 | FORWARD | 6-1
KILLEN, ALA.
LAUDERDALE COUNTY HS

CAREER HIGHLIGHTS

- 2021 SEC Academic Honor Roll
- 2020 SEC Academic Honor Roll
- 2019 SEC First-Year Academic Honor Roll

GAME-BY-GAME

Opponents	Min.	FG	3P	FT	O-D-T	PF	Pts	A	TO	Stl	Blk
Charleston Southern	11:07	1-1	0-0	1-2	0-5-5	0	3	2	0	1	0
Tulane	03:35	0-0	0-0	0-0	0-0-0	1	0	1	0	0	0
Southern Miss	04:41	0-0	0-0	0-0	0-1-1	1	0	0	0	0	1
vs. Duke					DNP						
Mercer	15:26	2-4	1-3	1-2	1-1-2	1	6	2	1	0	0
Western Carolina	13:29	1-2	0-1	2-2	0-3-3	1	4	0	2	2	1
Bethune-Cookman	06:49	0-2	0-2	0-0	0-3-3	2	0	0	2	0	1
Memphis	06:50	0-0	0-0	0-0	1-0-1	1	0	2	2	0	0
Houston					DNP						
at Chattanooga	05:25	0-0	0-0	0-0	1-1-2	0	0	0	2	0	0
Sam Houston	07:43	2-2	1-1	2-2	0-1-1	1	7	0	0	0	0
at Little Rock					Canceled						
Winthrop					Canceled						
at No. 7/9 Tennessee	02:51	0-1	0-1	0-0	0-0-0	1	0	0	0	0	1
Auburn	07:11	1-1	0-0	1-2	1-0-1	2	3	0	1	0	1
Mississippi State	01:27	0-0	0-0	0-0	0-1-1	1	0	0	0	0	0
at No. 15/14 Georgia					DNP						
at RV/RV Ole Miss					DNP						
Florida					DNP						
Arkansas	10:38	1-3	0-1	0-0	0-0-0	1	2	0	0	0	1
at Auburn	01:09	0-0	0-0	0-0	0-0-0	0	0	0	1	0	0
RV/NR Missouri	05:32	1-1	1-1	0-0	1-0-1	4	0	0	0	0	0
at No. 1/1 South Carolina	17:54	2-8	0-3	2-2	0-2-2	4	6	0	0	0	0
at Vanderbilt	01:27	0-0	0-0	0-0	0-0-0	0	0	0	0	0	0
Kentucky	08:01	0-0	0-0	1-2	0-2-2	1	1	0	0	0	1
No. 12/8 Tennessee	02:25	0-0	0-0	0-0	0-0-0	2	0	0	1	0	0
at Texas A&M	04:04	0-0	0-0	0-0	0-1-1	0	0	0	0	0	0
at No. 8/8 LSU	07:27	0-2	0-1	0-0	0-0-0	1	0	1	0	0	0
Vanderbilt											

CAREER HIGHS

Points	12	Southeastern Louisiana (11/7/18)
Rebounds	9	Tulsa (12/1/18)
Assists	5	Northwestern State (12/16/18)
Steals	4	Nicholls (12/16/20)
Blocks	2	SE Louisiana (12/29/19)
Minutes	24	2X, last vs. Northwestern St. (12/16/18)
Field Goals	4	2X, last vs. Nicholls (12/16/20)
FG Att.	8	3X, last vs. Nicholls (12/16/20)
3-Point FG	2	2X, last at Auburn (2/14/21)
3-Point Att.	4	4X, last at Memphis (12/29/20)
Free Throws	6	Southeastern Louisiana (11/7/18)
FT Att.	8	Southeastern Louisiana (11/7/18)

2021-22 SEASON HIGHS

Points	7	Sam Houston (12/13/21)
Rebounds	5	Charleston Southern (11/9/21)
Assists	2	3X, last Memphis (11/30/21)
Steals	2	2X, last Western Carolina (11/26/21)
Blocks	1	6X, last Arkansas (1/20/22)
Minutes	15	Mercer (11/24/21)
Field Goals	2	2X, last Sam Houston (12/13/21)
FG Att.	4	Mercer (11/24/21)
3-Point FG	1	2X, last Sam Houston (12/13/21)
3-Point Att.	3	Mercer (11/24/21)
Free Throws	2	2X, last Sam Houston (12/13/21)
FT Att.	2	4X, last Auburn (1/2/22)

MISCELLANEOUS STATS

CATEGORY	2021-22	CAREER
Games Started		1
Double-digit scoring		2
20+ point games		
Double-digit rebounding		
Double-doubles		
Led UA in scoring		
Led UA in rebounding		1
Led UA in assists		1
Led UA in steals		6
Led UA in blocks	4	7

CAREER STATS

Year	GP	GS	Min	Avg	FG	FGA	Pct	3FG	3FGA	Pct	FT	FTA	Pct	Off	Def	Tot	Avg	PF	FO	A	TO	Blk	Stl	Pts	Avg
2018-19	31	1	304	9.8	19	65	.292	9	38	.237	17	24	.708	13	42	55	1.8	34	0	20	27	2	10	64	2.1
2019-20	16	0	74	4.6	11	20	.550	3	7	.429	4	4	1.000	4	9	13	0.8	10	0	1	6	2	1	29	1.8
2020-21	27	0	303	11.2	24	63	.381	12	42	.286	14	20	.700	21	39	60	2.2	50	0	13	12	4	18	74	2.7
2021-22	21	0	145	6.9	11	27	.407	3	14	.214	10	14	.714	5	21	26	1.2	25	0	8	12	7	3	35	1.7
TOTALS	95	1	825	8.7	65	175	.371	27	101	.267	45	62	.726	43	111	154	1.6	119	0	42	57	15	32	202	2.1



SOPHOMORE

MYRA GORDON

#15 | GUARD | 6-0

FORT WORTH, TEXAS
L.D. BELL HS**CAREER HIGHLIGHTS**

- SEC Freshman of the Week (1/12)

GAME-BY-GAME

Opponents	Min.	FG	3P	FT	O-D-T	PF	Pts	A	TO	Stl	Blk
Charleston Southern	12:42	0-3	0-0	0-0	1-3-4	2	0	1	1	1	0
Tulane	04:01	0-2	0-2	0-0	0-1-1	0	0	0	0	0	0
Southern Miss	05:05	1-1	0-0	0-0	0-0-0	0	2	0	0	1	0
vs. Duke	19:30	1-3	0-0	0-2	2-3-5	3	2	0	1	0	0
Mercer	14:54	1-2	0-1	0-0	1-3-4	1	2	1	3	1	0
Western Carolina	18:22	2-3	0-1	3-4	1-4-5	1	7	1	1	1	0
Bethune-Cookman	18:28	1-2	0-0	0-0	1-6-7	2	2	1	0	3	0
Memphis	14:10	1-3	0-1	0-0	0-4-4	0	2	0	1	0	0
Houston	10:51	0-1	0-0	0-0	0-3-3	1	0	1	2	0	0
at Chattanooga	21:36	3-6	0-2	2-2	4-3-7	2	8	0	1	2	0
Sam Houston	17:24	0-3	0-1	0-0	1-4-5	2	0	1	1	1	0
at Little Rock					Canceled						
Winthrop					Canceled						
at No. 7/9 Tennessee	28:24	2-9	0-1	0-0	5-3-8	2	4	1	1	1	0
Auburn	04:27	0-0	0-0	0-0	0-0-0	0	0	0	0	0	0
Mississippi State	09:44	0-0	0-0	2-2	1-0-1	1	2	0	0	0	0
at No. 15/14 Georgia	07:17	1-2	0-0	0-0	1-1-2	0	2	0	0	0	0
at RV/RV Ole Miss	10:38	0-1	0-0	1-2	0-0-1	1	1	0	0	0	0
Florida	23:02	0-2	0-1	1-2	3-2-5	5	1	0	2	4	1
Arkansas	19:58	1-6	0-1	0-1	1-3-4	3	2	1	2	0	0
at Auburn	02:13	0-0	0-0	0-0	0-1-1	1	0	0	0	0	0
RV/NR Missouri	12:44	1-2	0-0	0-0	1-0-1	0	2	1	0	1	0
at No. 1/1 South Carolina	13:58	1-4	0-1	0-0	2-2-4	3	2	0	1	0	0
at Vanderbilt	03:09	0-0	0-0	0-0	0-0-0	0	0	0	0	0	0
Kentucky					DNP						
No. 12/8 Tennessee					DNP						
at Texas A&M	02:52	0-0	0-0	0-0	0-0-0	0	0	0	0	0	0
at No.8/8 LSU	00:28	0-0	0-0	0-0	0-0-0	0	0	0	0	0	0
Vanderbilt											

CAREER HIGHS

Points	8	2X, last at Chattanooga (12/3/21)
Rebounds	8	at Tennessee (12/30/21)
Assists	3	Maryland (3/24/21)
Steals	4	Florida (1/16/22)
Blocks	1	3X, last Florida (1/16/22)
Minutes	30	at Oklahoma State (12/5/20)
Field Goals	3	at Chattanooga (12/5/21)
FG Att.	9	at Tennessee (12/30/21)
3-Point FG	2	at Vanderbilt (1/10/21)
3-Point Att.	5	at Vanderbilt (1/10/21)
Free Throws	6	USC Upstate (12/2/20)
FT Att.	6	USC Upstate (12/2/20)

2021-22 SEASON HIGHS

Points	8	at Chattanooga (12/5/21)
Rebounds	8	at Tennessee (12/30/21)
Assists	1	8X, last Arkansas (1/20/22)
Steals	4	Florida (1/16/22)
Blocks	1	Florida (1/16/22)
Minutes	28	at Tennessee (12/30/21)
Field Goals	3	at Chattanooga (12/5/21)
FG Att.	9	at Tennessee (12/30/21)
3-Point FG		
3-Point Att.	2	2X, last at Chattanooga (12/5/21)
Free Throws	3	Western Carolina (11/26/21)
FT Att.	4	Western Carolina (11/26/21)

MISCELLANEOUS STATS

CATEGORY	2021-22	CAREER
Games Started	1	3
Double-digit scoring		
20+ point games		
Double-digit rebounding		
Double-doubles		
Led UA in scoring		
Led UA in rebounding	1	1
Led UA in assists		
Led UA in steals	1	2
Led UA in blocks		

CAREER STATS

Year	GP	GS	Min	Avg	FG	FGA	Pct	3FG	3FGA	Pct	FT	FTA	Pct	Off	Def	Tot	Avg	PF	FO	A	TO	Blk	Stl	Pts	Avg
2020-21	26	2	230	8.9	14	38	.368	3	13	.231	7	11	.636	20	15	35	1.3	14	0	20	7	2	5	38	1.5
2021-22	24	1	296	12.3	16	55	.291	0	12	.000	9	15	.600	25	46	71	3.0	30	1	9	17	1	16	41	1.7
TOTALS	50	3	526	10.5	30	93	.323	3	25	.120	16	26	.615	45	61	106	2.1	44	1	29	24	3	21	79	1.6



BRITTANY DAVIS
#23 | GUARD | 5-9
MANCHESTER, GA.
GULF COAST STATE COLLEGE

CAREER HIGHLIGHTS

- SEC Player of the Week (12/17/19)
- College Sports Madness National Player of the Week (12/16/19)
- NCAA Starting Five (12/18/19)

GAME-BY-GAME

Opponents	Min.	FG	3P	FT	O-D-T	PF	Pts	A	TO	Stl	Blk
Charleston Southern	21:38	9-19	5-10	2-2	5-7-12	1	25	2	1	1	0
Tulane	35:40	6-16	4-11	1-2	2-4-6	1	17	1	0	1	0
Southern Miss	30:11	7-19	2-10	7-8	4-7-11	3	23	4	2	2	0
vs. Duke	30:26	5-10	2-4	4-6	1-0-1	1	16	1	5	3	0
Mercer	32:12	4-8	3-6	2-2	4-5-9	1	13	2	1	2	0
Western Carolina	21:57	5-12	2-8	2-4	3-4-7	0	14	0	0	2	0
Bethune-Cookman	14:54	4-9	3-8	1-2	2-3-5	2	12	0	1	2	0
Memphis	28:58	6-15	2-9	0-0	1-5-6	2	14	0	2	3	0
Houston	29:37	5-15	2-10	5-6	1-7-8	2	17	1	1	0	0
at Chattanooga	21:25	3-8	0-4	3-5	0-3-3	2	9	2	1	4	0
Sam Houston	28:43	4-10	1-4	5-6	5-4-9	2	14	1	1	1	0
at Little Rock					Canceled						
Winthrop					Canceled						
at No. 7/9 Tennessee	30:25	5-19	1-10	1-2	3-3-6	2	12	4	1	2	0
Auburn	35:33	4-16	1-7	1-2	3-8-11	1	10	2	2	2	0
Mississippi State	33:56	4-14	2-8	1-2	2-7-9	1	11	2	3	0	0
at No. 15/14 Georgia	32:23	6-15	6-9	0-0	0-4-4	3	18	0	5	0	0
at RV/RV Ole Miss	36:06	6-13	0-1	8-10	2-5-7	2	20	2	5	0	0
Florida	37:47	7-17	3-8	2-6	5-5-10	0	19	2	5	2	0
Arkansas	37:10	6-18	5-13	3-3	3-5-8	3	20	2	2	0	0
at Auburn	37:13	8-19	3-7	5-6	3-5-8	3	24	3	1	2	0
RV/NR Missouri	31:24	1-7	0-2	1-2	3-2-5	1	3	2	1	0	0
at No. 1/1 South Carolina	32:44	7-16	3-7	3-4	0-1-1	0	20	0	1	1	0
at Vanderbilt	42:05	9-17	4-11	3-4	0-9-9	4	25	2	4	2	1
Kentucky	37:19	4-16	0-6	4-4	1-5-6	3	12	1	3	2	0
No. 12/8 Tennessee	38:04	8-15	4-8	3-3	1-5-6	2	23	0	1	0	0
at Texas A&M	48:03	12-26	7-15	1-3	0-6-6	3	32	0	2	1	0
at No.8/8 LSU	39:32	7-15	4-11	0-0	0-11-11	1	18	1	5	0	0
Vanderbilt											

CAREER HIGHS

Points	32	at Texas A&M (2/20/22)
Rebounds	12	Charleston Southern (11/9/21)
Assists	4	2X, last at Tennessee (12/30/21)
Steals	4	2X, last at Chattanooga (12/5/21)
Blocks	1	at Vanderbilt (2/6/22)
Minutes	48	at Texas A&M (2/20/22)
Field Goals	12	at Texas A&M (2/20/22)
FG Att.	26	at Texas A&M (2/20/22)
3-Point FG	7	at Texas A&M (2/20/22)
3-Point Att.	15	at Texas A&M (2/20/22)
Free Throws	8	at Ole Miss (1/13/22)
FT Att.	10	at Ole Miss (1/13/22)

2021-22 SEASON HIGHS

Points	32	at Texas A&M (2/20/22)
Rebounds	12	Charleston Southern (11/9/21)
Assists	4	2X, last at Tennessee (12/30/21)
Steals	4	at Chattanooga (12/5/21)
Blocks	1	at Vanderbilt (2/6/22)
Minutes	48	at Texas A&M (2/20/22)
Field Goals	12	at Texas A&M (2/20/22)
FG Att.	26	at Texas A&M (2/20/22)
3-Point FG	7	at Texas A&M (2/20/22)
3-Point Att.	15	at Texas A&M (2/20/22)
Free Throws	8	at Ole Miss (1/13/22)
FT Att.	10	at Ole Miss (1/13/22)

MISCELLANEOUS STATS

CATEGORY	2021-22	CAREER
Games Started	26	26
Double-digit scoring	24	34
20+ point games	9	10
Double-digit rebounding	5	5
Double-doubles	5	5
Led UA in scoring	10	12
Led UA in rebounding	11	11
Led UA in assists	5	5
Led UA in steals	7	12
Led UA in blocks	1	1

CAREER STATS

Year	GP	GS	Min	Avg	FG	FGA	Pct	3FG	3FGA	Pct	FT	FTA	Pct	Off	Def	Tot	Avg	PF	FO	A	TO	Blk	Stl	Pts	Avg
2019-20	30	0	493	16.4	71	179	.397	32	100	.320	24	37	.649	12	47	59	2.0	40	0	26	42	0	17	198	6.6
2020-21																									
2021-22	26	26	843	32.4	152	384	.396	69	207	.333	68	94	.723	54	130	184	7.1	46	0	37	56	1	35	441	17.0
TOTALS	56	26	1336	23.9	223	563	.396	101	307	.329	92	131	.702	66	177	243	4.3	86	0	63	98	1	52	639	11.4



JADA RICE
#31 | CENTER | 6-4
SUWANNEE, GA.
COLLINS HILL HS

GAME-BY-GAME

Opponents	Min.	FG	3P	FT	O-D-T	PF	Pts	A	TO	Stl	Blk
Charleston Southern	10:32	6-8	0-0	2-2	1-3-4	2	14	0	0	0	0
Tulane	26:34	2-6	0-0	2-3	2-1-3	5	6	0	4	1	3
Southern Miss	21:51	5-10	0-0	6-10	1-3-4	0	16	0	1	0	2
vs. Duke	27:09	2-3	0-0	0-0	2-3-5	3	4	0	2	1	0
Mercer	20:08	6-11	0-0	0-1	0-5-5	3	12	0	3	0	1
Western Carolina	21:55	1-5	0-0	2-2	3-4-7	1	4	1	2	4	0
Bethune-Cookman	13:06	3-5	0-0	0-0	1-3-4	3	6	0	2	0	0
Memphis	27:32	6-9	0-0	1-1	5-6-11	1	13	4	0	3	1
Houston	20:11	4-5	0-0	1-2	0-4-4	3	9	1	1	0	0
at Chattanooga	15:43	1-2	0-0	4-6	1-3-4	3	6	0	1	0	1
Sam Houston	20:48	1-3	0-0	0-0	0-5-5	1	2	0	2	0	8
at Little Rock					Canceled						
Winthrop					Canceled						
at No. 7/9 Tennessee	30:24	1-6	0-0	2-2	3-5-8	4	4	0	3	1	3
Auburn	21:52	3-9	0-0	1-4	3-7-10	6	7	0	1	0	2
Mississippi State	35:26	4-7	0-0	0-1	3-7-10	3	8	2	3	0	2
at No. 15/14 Georgia	27:53	3-7	0-0	4-6	3-1-4	1	10	1	1	0	2
at RV/RV Ole Miss	13:25	0-2	0-0	0-2	0-2-2	5	0	1	1	0	1
Florida	17:57	1-3	0-0	0-1	1-3-4	2	2	0	2	1	2
Arkansas	20:33	1-7	0-0	1-2	1-2-3	1	3	2	0	2	0
at Auburn	11:17	1-2	0-0	1-2	0-0-0	2	3	2	0	1	1
RV/NR Missouri	27:13	4-6	0-0	4-4	2-1-3	4	12	1	2	2	2
at No. 1/1 South Carolina	14:33	0-2	0-0	0-0	1-1-2	4	0	1	2	0	0
at Vanderbilt	18:40	1-1	0-0	1-2	1-2-3	2	3	0	1	1	0
Kentucky	25:56	4-7	0-0	0-0	3-5-8	2	8	0	3	2	5
No. 12/8 Tennessee	12:42	0-2	0-0	0-0	0-1-1	4	0	1	0	0	2
at Texas A&M	27:48	0-3	0-0	0-2	2-4-6	5	0	0	2	3	3
at No.8/8 LSU	18:57	0-5	0-0	0-0	3-1-4	4	0	0	3	0	2
Vanderbilt											

CAREER HIGHS

Points	16	Southern Miss (11/17/21)
Rebounds	11	Memphis (11/30/21)
Assists	4	Memphis (11/30/21)
Steals	4	Western Carolina (11/26/21)
Blocks	8	Sam Houston (12/13/21)
Minutes	35	Mississippi State (1/6/22)
Field Goals	6	3X, last Memphis (11/30/21)
FG Att.	11	Mercer (11/24/21)
3-Point FG		
3-Point Att.		
Free Throws	6	Southern Miss (11/17/21)
FT Att.	10	Southern Miss (11/17/21)

2021-22 SEASON HIGHS

Points	16	Southern Miss (11/17/21)
Rebounds	11	Memphis (11/30/21)
Assists	4	Memphis (11/30/21)
Steals	4	Western Carolina (11/26/21)
Blocks	8	Sam Houston (12/13/21)
Minutes	35	Mississippi State (1/6/22)
Field Goals	6	3X, last Memphis (11/30/21)
FG Att.	11	Mercer (11/24/21)
3-Point FG		
3-Point Att.		
Free Throws	6	Southern Miss (11/17/21)
FT Att.	10	Southern Miss (11/17/21)

MISCELLANEOUS STATS

CATEGORY	2021-22	CAREER (UA)
Games Started	21	21
Double-digit scoring	6	6
20+ point games		
Double-digit rebounding	3	3
Double-doubles	1	1
Led UA in scoring		
Led UA in rebounding	4	4
Led UA in assists	1	1
Led UA in steals	6	6
Led UA in blocks	16	16

CAREER STATS

Year	GP	GS	Min	Avg	FG	FGA	Pct	3FG	3FGA	Pct	FT	FTA	Pct	Off	Def	Tot	Avg	PF	FO	A	TO	Blk	Stl	Pts	Avg
2018-19(NCS)	22	0	75	3.4	1	9	.111	0	0	.000	3	8	.375	5	12	17	0.8	6	0	3	7	3	0	5	0.2
2020-21(NCS)	13	1	81	6.2	11	21	.524	0	0	.000	0	10	.000	8	16	24	1.8	9	0	2	9	4	1	22	1.7
2021-22	26	21	550	21.2	60	136	.441	0	0	.000	32	55	.582	42	82	124	4.8	74	4	17	42	43	22	152	5.8
TOTAL	61	22	706	11.6	72	166	.434	0	0	.000	35	73	.479	55	110	165	2.7	89	4	22	58	50	23	179	2.9



SOPHOMORE

KHYLLA WADE-WARREN

#33 | FORWARD | 6-2

SELMER, TENN.
TEXAS TECH

GAME-BY-GAME

Opponents	Min.	FG	3P	FT	O-D-T	PF	Pts	A	TO	Stl	Blk
Charleston Southern	15:01	7-9	1-2	1-4	2-3-5	1	16	0	0	2	0
Tulane	03:33	0-0	0-0	0-0	0-1-1	1	0	0	1	0	0
Southern Miss	07:34	0-0	0-0	0-0	1-0-1	0	0	0	0	1	0
vs. Duke	01:07	0-1	0-0	0-0	0-0-0	2	0	1	1	0	0
Mercer	07:17	0-2	0-1	0-0	0-1-1	0	0	0	0	0	0
Western Carolina	12:39	3-5	0-1	0-0	0-0-0	5	6	1	1	0	0
Bethune-Cookman	18:56	5-10	0-2	6-6	4-5-9	2	16	0	1	1	1
Memphis	12:28	1-3	0-0	0-0	2-2-4	1	2	1	2	0	1
Houston	19:09	1-3	0-0	0-0	1-1-2	1	2	1	1	2	3
at Chattanooga	20:50	4-5	1-1	2-4	2-4-6	3	11	0	1	0	2
Sam Houston	16:53	1-5	1-2	0-0	1-0-1	0	3	0	1	0	2
at Little Rock					Canceled						
Winthrop					Canceled						
at No. 7/9 Tennessee	06:45	1-4	0-2	1-2	0-0-0	3	3	0	2	0	0
Auburn	10:48	0-3	0-1	1-2	2-1-3	3	1	0	1	0	1
Mississippi State	03:07	1-1	0-0	0-0	0-0-0	0	2	0	0	0	0
at No. 15/14 Georgia	12:06	1-4	1-3	0-0	0-2-2	1	3	1	1	0	0
at RV/RV Ole Miss	26:35	4-7	1-3	2-2	0-0-0	3	11	0	3	0	1
Florida	24:28	3-8	1-4	2-2	3-2-5	2	9	0	2	1	2
Arkansas	17:01	3-5	0-1	2-2	2-1-3	3	8	1	2	2	1
at Auburn	27:34	4-8	0-3	7-9	2-2-4	2	15	0	3	1	1
RV/NR Missouri	05:16	0-0	0-0	0-0	0-0-0	1	0	0	2	0	0
at No. 1/1 South Carolina	11:58	0-1	0-0	0-0	0-1-1	3	0	1	2	0	1
at Vanderbilt	24:54	3-4	0-0	0-0	0-1-1	5	6	1	3	0	0
Kentucky	12:27	0-2	0-0	0-0	2-2-4	0	0	0	0	0	0
No. 12/8 Tennessee	27:16	2-5	2-4	0-0	0-1-1	3	6	0	2	1	1
at Texas A&M	19:46	0-2	0-2	0-0	0-1-1	5	0	0	1	2	0
at No.8/8 LSU	13:36	1-2	1-2	0-0	0-0-0	4	3	0	3	0	0
Vanderbilt											

CAREER HIGHS

Points	16	2X, last Bethune-Cookman (11/28/21)
Rebounds	9	Bethune-Cookman (11/28/21)
Assists	2	Incarate Word (12/29/20)
Steals	2	4X, last Arkansas (1/20/22)
Blocks	3	Houston (12/3/21)
Minutes	27	at Ole Miss (1/13/22)
Field Goals	7	Charleston Southern (11/9/21)
FG Att.	10	Bethune-Cookman (11/28/21)
3-Point FG	2	UTRG (11/25/20)
3-Point Att.	4	Florida (1/16/22)
Free Throws	6	Bethune-Cookman (11/28/21)
FT Att.	6	Bethune-Cookman (11/28/21)

2021-22 SEASON HIGHS

Points	16	2X, last Bethune-Cookman (11/28/21)
Rebounds	9	Bethune-Cookman (11/28/21)
Assists	1	5X, last at Georgia (1/9/22)
Steals	2	3X, last Arkansas (1/20/22)
Blocks	3	Houston (12/3/21)
Minutes	27	at Ole Miss (1/13/22)
Field Goals	7	Charleston Southern (11/9/21)
FG Att.	10	Bethune-Cookman (11/28/21)
3-Point FG	1	4X, last at Georgia (1/9/22)
3-Point Att.	4	Florida (1/16/22)
Free Throws	6	Bethune-Cookman (11/28/21)
FT Att.	6	Bethune-Cookman (11/28/21)

MISCELLANEOUS STATS

CATEGORY	2021-22	CAREER (UA)
Games Started	5	5
Double-digit scoring	5	5
20+ point games		
Double-digit rebounding		
Double-doubles		
Led UA in scoring	1	1
Led UA in rebounding	1	1
Led UA in assists		
Led UA in steals	2	2
Led UA in blocks	7	7

CAREER STATS

Year	GP	GS	Min	Avg	FG	FGA	Pct	3FG	3FGA	Pct	FT	FTA	Pct	Off	Def	Tot	Avg	PF	FO	A	TO	Blk	Stl	Pts	Avg
2020-21(TTU)	24	2	228	9.5	27	55	.491	3	10	.300	9	14	.643	14	33	47	2.0	20	0	7	17	14	3	66	2.8
2021-22	26	5	380	14.6	45	99	.455	9	34	.265	24	33	.727	24	31	55	2.1	54	3	8	36	17	13	123	4.7
TOTALS	50	7	608	12.2	72	154	.468	12	44	.273	33	47	.702	38	64	102	2.0	74	3	15	53	31	16	189	3.8



FRESHMAN

TAYLOR CULLINAN

#45 | FORWARD | 6-3

DALLAS, GA.
NORTH PAULDING HS

PREP HIGHLIGHTS

- Varsity starter all four years at North Paulding High School
- 2021 Paulding County School District Girls Basketball Player of the Year
- Averaged 15.2 ppg, 12.3 rpg, 3.1 bpg, 3.3 apg and 1.5 spg her senior season (2020-21)
- The first 1,000-point scorer in NPHS history
- The first player to eclipse 750 rebounds in NPHS history
- All-county selection all four years
- As a junior (2019-20), Cullinan was named All-County Player of the Year and an all-region selection
- As a sophomore (2018-19), she was named second team all-region and Co-Offensive Player of the Year

GAME-BY-GAME

Opponents	Min.	FG	3P	FT	O-D-T	PF	Pts	A	TO	Stl	Blk
Charleston Southern	02:47	0-1	0-1	2-2	0-0-0	0	2	0	0	1	0
Tulane					DNP						
Southern Miss					DNP						
vs. Duke					DNP						
Mercer					DNP						
Western Carolina					DNP						
Bethune-Cookman	02:24	0-0	0-0	0-0	0-0-0	0	0	0	0	0	0
Memphis	01:17	0-2	0-1	0-0	1-0-1	0	0	0	0	0	0
Houston					DNP						
at Chattanooga					DNP						
Sam Houston	02:19	0-0	0-0	0-0	0-0-0	1	0	0	0	0	0
at Little Rock					Canceled						
Winthrop					Canceled						
at No. 7/9 Tennessee					DNP						
Auburn					DNP						
Mississippi State					DNP						
at No. 15/14 Georgia					DNP						
at RV/RV Ole Miss					DNP						
Florida	00:12	0-0	0-0	0-0	0-0-0	2	0	0	0	0	0
Arkansas					DNP						
at Auburn					DNP						
RV/NR Missouri	01:59	0-0	0-0	0-0	0-0-0	0	0	0	0	0	0
at No. 1/1 South Carolina					DNP						
at Vanderbilt					DNP						
Kentucky					DNP						
No. 12/8 Tennessee					DNP						
at Texas A&M					DNP						
at No.8/8 LSU					DNP						
Vanderbilt											

CAREER HIGHS

Points	2	Charleston Southern (11/9/21)
Rebounds	1	Memphis (11/30/21)
Assists		
Steals	1	Charleston Southern (11/9/21)
Blocks		
Minutes	3	Charleston Southern (11/9/21)
Field Goals		
FG Att.	2	Memphis (11/30/21)
3-Point FG		
3-Point Att.	1	2X, last Memphis (11/30/21)
Free Throws	2	Charleston Southern (11/9/21)
FT Att.	2	Charleston Southern (11/9/21)

2021-22 SEASON HIGHS

Points	2	Charleston Southern (11/9/21)
Rebounds	1	Memphis (11/30/21)
Assists		
Steals	1	Charleston Southern (11/9/21)
Blocks		
Minutes	3	Charleston Southern (11/9/21)
Field Goals		
FG Att.	2	Memphis (11/30/21)
3-Point FG		
3-Point Att.	1	2X, last Memphis (11/30/21)
Free Throws	2	Charleston Southern (11/9/21)
FT Att.	2	Charleston Southern (11/9/21)

MISCELLANEOUS STATS

CATEGORY	2021-22	CAREER
Games Started		
Double-digit scoring		
20+ point games		
Double-digit rebounding		
Double-doubles		
Led UA in scoring		
Led UA in rebounding		
Led UA in assists		
Led UA in steals		
Led UA in blocks		

CAREER STATS

Year	GP	GS	Min	Avg	FG	FGA	Pct	3FG	3FGA	Pct	FT	FTA	Pct	Off	Def	Tot	Avg	PF	FO	A	TO	Blk	Stl	Pts	Avg
2021-22	6	0	10:58	1.8	0	3	.000	0	2	.000	2	2	1.000	1	0	1	0.2	3	0	0	0	0	1	2	0.3
TOTALS	6	0	10:58	1.8	0	3	.000	0	2	.000	2	2	1.000	1	0	1	0.2	3	0	0	0	0	1	2	0.3