



Vanderbilt at LSU

01/16/22 Maravich Assembly Center, Baton Rouge  
2021-22 Women's Basketball

Game Time: 12:00 PM  
Game Duration: 1:51  
Attendance: 6,853

Officials: Joseph Vaszily, Ashley Goode, Eric Koch

Vanderbilt - 64

Record: 10-8 (1-3)

NO.	Name	Min	FG			3P			FT			Rebounds			Fouls		TP	AS	TO	ST	Blocks		+/-
			M-A	M-A	M-A	OR	DR	TOT	PF	FD	BS	BA											
15	Brinae Alexander	F 28:20	8-19	3-8	5-5	2	1	3	5	4	24	1	1	1	2	0	0	-19					
50	Kaylon Smith	F 33:42	5-12	1-2	0-0	4	3	7	2	2	11	3	2	2	1	1	-20						
3	Jordyn Cambridge	G 20:14	2-7	0-1	0-1	1	2	3	2	1	4	2	3	2	0	1	-13						
12	Demi Washington	G 32:36	1-10	0-0	1-3	4	3	7	1	4	3	1	0	0	0	1	-12						
21	Bella LaChance	G 18:29	2-6	2-4	0-0	0	0	0	0	0	6	2	1	0	0	0	-1						
23	Iyana Moore	33:14	6-15	2-6	0-0	1	6	7	1	2	14	3	5	4	0	1	-23						
35	Sacha Washington	11:21	0-0	0-0	0-0	1	1	2	4	1	0	0	1	0	0	0	2						
5	Yaubryon Chambers	14:01	0-0	0-0	0-0	1	1	2	2	0	0	0	1	0	0	0	-5						
13	De'Mauri Flournoy	08:03	1-5	0-3	0-0	1	0	1	1	0	2	0	1	0	0	0	1						
Team						3	0	3			0		0										
<b>Totals</b>			25-74	8-24	6-9	18	17	35	18	14	64	12	15	10	1	4	-18						

Technical Fouls::NONE

Shooting By Period		
1st FG%	6-16	37.5%
3PT%	2-4	50.0%
FT%	1-1	100%
2nd FG%	7-17	41.2%
3PT%	3-5	60.0%
FT%	4-4	100%
3rd FG%	4-20	20.0%
3PT%	0-5	0.0%
FT%	1-3	33.3%
4th FG%	8-21	38.1%
3PT%	3-10	30.0%
FT%	0-1	0%
GM FG%	25-74	33.8%
3PT%	8-24	33.3%
FT%	6-9	66.7%

Dead Ball Rebounds: 0, 1

LSU - 82

Record: 17-2 (5-1)

NO.	Name	Min	FG			3P			FT			Rebounds			Fouls		TP	AS	TO	ST	Blocks		+/-
			M-A	M-A	M-A	OR	DR	TOT	PF	FD	BS	BA											
32	Awa Trasi	F 22:29	1-5	0-0	2-4	4	3	7	3	3	4	1	1	0	1	0	24						
24	Faustine Aifuwa	C 29:00	10-12	0-0	0-1	3	4	7	3	2	20	2	3	1	1	0	25						
1	Jailin Cherry	G 38:38	5-10	0-0	2-4	2	7	9	1	2	12	8	2	2	0	0	25						
3	Khayla Pointer	G 32:28	7-10	0-2	3-4	0	7	7	2	7	17	7	2	4	1	0	29						
45	Alexis Morris	G 32:50	9-13	1-3	1-2	0	7	7	3	2	20	2	5	2	0	1	26						
20	Hannah Gusters	13:57	0-3	0-0	0-0	0	2	2	2	0	0	1	1	0	0	0	-17						
10	Ryann Payne	14:04	2-3	1-1	1-2	0	2	2	0	2	6	2	0	0	0	0	-7						
21	Timia Ware	04:16	0-1	0-1	0-0	0	0	0	0	0	0	0	0	0	0	0	-10						
14	Sarah Shematsi	09:29	1-3	1-2	0-0	0	1	1	0	0	3	0	1	1	1	0	1						
23	Amani Bartlett	02:49	0-0	0-0	0-0	0	0	0	0	0	0	0	0	0	0	0	-6						
Team						0	1	1			0		0										
<b>Totals</b>			35-60	3-9	9-17	9	34	43	14	18	82	23	15	10	4	1	18						

Technical Fouls::NONE

Shooting By Period		
1st FG%	10-19	52.6%
3PT%	0-3	0.0%
FT%	1-2	50%
2nd FG%	9-14	64.3%
3PT%	2-2	100.0%
FT%	2-5	40%
3rd FG%	10-14	71.4%
3PT%	0-1	0.0%
FT%	3-4	75%
4th FG%	6-13	46.2%
3PT%	1-3	33.3%
FT%	3-6	50%
GM FG%	35-60	58.3%
3PT%	3-9	33.3%
FT%	9-17	52.9%

Dead Ball Rebounds: 6, 0

	VAN	LSU
Biggest lead	1 (1 <sup>st</sup> 8:17)	27 (4 <sup>th</sup> 3:52)
Best Scoring Run	9(4 <sup>th</sup> 0:16)	9(4 <sup>th</sup> 9:00)
Lead Changes	2	
Times Tied	2	
Time with Lead	00:27	38:23

	VAN	LSU
Points from		
Turnovers	15	23
Paint	20	48
Second Chance	19	14
Fast Breaks	13	27
Bench	16	9

	Period by Period Scoring				
	1st	2nd	3rd	4th	TOT
VAN	15	21	9	19	64
LSU	21	22	23	16	82



**Period 1**

**Quarter Starters:**

<b>LSU</b>	1 Cherry J	3 Pointer K	24 Aifuwa F	32 Trasi A	45 Morris A
<b>VAN</b>	3 Cambridge J	12 Washington D	15 Alexander B	21 LaChance B	50 Smith K

Game Time	LSU	Score	Diff	VAN
10:00	24 AIFUWA F jumpball won			12 WASHINGTON D jumpball lost
09:39	24 AIFUWA F turnover lost ball (1)			50 SMITH K steal (1)
09:29				15 ALEXANDER B 2pt FG from turnover outside the paint, jump shot missed
09:26	1 CHERRY J defensive rebound (1)			
09:19	32 TRASI A 2pt FG in the paint, layup missed			
09:17	32 TRASI A offensive rebound (1)			
09:06	45 MORRIS A 2pt FG second chance in the paint, layup made (2)	<b>2-0</b>	<b>2</b>	
08:44				50 SMITH K 2pt FG outside the paint, jump shot missed
08:42				15 ALEXANDER B offensive rebound (1)
08:40		<b>2-2</b>	<b>0</b>	15 ALEXANDER B 2pt FG second chance in the paint, layup made (2)
08:24	45 MORRIS A 2pt FG outside the paint, jump shot made (4)	<b>4-2</b>	<b>2</b>	
08:24	1 CHERRY J assist (1)			
08:17		<b>4-4</b>	<b>0</b>	15 ALEXANDER B 2pt FG fast break in the paint, layup made (4)
08:17				21 LACHANCE B assist (1)
08:17	3 POINTER K foul shooting (1 - 1)			15 ALEXANDER B foul drawn (1)
08:17				21 LACHANCE B substitution out
08:17				23 MOORE I substitution in
08:17		<b>4-5</b>	<b>-1</b>	15 ALEXANDER B free throw fast break 1 - 1 made (5)
08:06	3 POINTER K 3pt FG , jump shot missed			
07:59				23 MOORE I defensive rebound (1)
07:55	24 AIFUWA F steal (1)			23 MOORE I turnover bad pass (1)
07:50	3 POINTER K 2pt FG fast break from turnover in the paint, layup made (2)	<b>6-5</b>	<b>1</b>	
07:27				12 WASHINGTON D 2pt FG in the paint, jump shot missed
07:22				23 MOORE I offensive rebound (2)
07:18				3 CAMBRIDGE J turnover travel (1)
07:12	45 MORRIS A 2pt FG fast break from turnover in the paint, layup made (6)	<b>8-5</b>	<b>3</b>	
06:57				15 ALEXANDER B 3pt FG , jump shot missed
06:52				12 WASHINGTON D offensive rebound (1)
06:44	1 CHERRY J steal (1)			3 CAMBRIDGE J turnover bad pass (2)
06:41	1 CHERRY J 2pt FG from turnover in the paint, layup missed			
06:38				3 CAMBRIDGE J defensive rebound (1)
06:34				23 MOORE I turnover travel (2)
06:28	1 CHERRY J turnover out of bounds (1)			
06:16		<b>8-7</b>	<b>1</b>	3 CAMBRIDGE J 2pt FG from turnover outside the paint, jump shot made (2)
06:00	32 TRASI A 2pt FG in the paint, jump shot missed			
05:57	32 TRASI A offensive rebound (2)			
05:47	24 AIFUWA F 2pt FG second chance outside the paint, jump shot made (2)	<b>10-7</b>	<b>3</b>	
05:47	3 POINTER K assist (1)			



**Officials:** Joseph Vaszily, Ashley Goode, Eric Koch

Game Time	LSU	Score	Diff	VAN
05:25	32 TRASI A foul drawn (1)			15 ALEXANDER B foul offensive (1 - 1)
05:25				15 ALEXANDER B turnover offensive (1)
05:25	32 TRASI A substitution out			
05:25	20 GUSTERS H substitution in			
05:18	1 CHERRY J 2pt FG from turnover outside the paint, jump shot made (2)	<b>12-7</b>	<b>5</b>	
05:18	45 MORRIS A assist (1)			
05:11		<b>12-9</b>	<b>3</b>	50 SMITH K 2pt FG outside the paint, jump shot made (2)
05:01	1 CHERRY J 2pt FG outside the paint, jump shot missed			
04:58				3 CAMBRIDGE J defensive rebound (2)
04:36				3 CAMBRIDGE J 2pt FG outside the paint, jump shot missed
04:33	3 POINTER K defensive rebound (1)			
04:17	45 MORRIS A 3pt FG , jump shot missed			
04:12	1 CHERRY J offensive rebound (2)			
04:09	Timeout media			
03:57	45 MORRIS A 2pt FG second chance outside the paint, jump shot made (8)	<b>14-9</b>	<b>5</b>	
03:57	24 AIFUWA F assist (1)			
03:27				3 CAMBRIDGE J 3pt FG , jump shot missed
03:23	45 MORRIS A defensive rebound (1)			
03:14	20 GUSTERS H turnover lost ball (1)			50 SMITH K steal (2)
03:08				3 CAMBRIDGE J 2pt FG from turnover in the paint, layup missed
03:06				50 SMITH K offensive rebound (1)
03:04		<b>14-12</b>	<b>2</b>	15 ALEXANDER B 3pt FG from turnover second chance, jump shot made (8)
03:04				50 SMITH K assist (1)
02:39	20 GUSTERS H 2pt FG in the paint, layup missed			
02:35				50 SMITH K defensive rebound (2)
02:32	3 POINTER K steal (1)			50 SMITH K turnover bad pass (1)
02:29	3 POINTER K foul drawn (1)			50 SMITH K foul shooting (1 - 2)
02:29	3 POINTER K free throw 1 - 2 made (3)	<b>15-12</b>	<b>3</b>	
02:29	3 POINTER K free throw 2 - 2 missed			
02:29	24 AIFUWA F offensive rebound (1)			
02:29	20 GUSTERS H substitution out			
02:29	32 TRASI A substitution in			
02:29				12 WASHINGTON D substitution out
02:29				35 WASHINGTON S substitution in
02:22	3 POINTER K 3pt FG second chance, jump shot missed			
02:19				15 ALEXANDER B defensive rebound (2)
02:16	45 MORRIS A foul drawn (1)			35 WASHINGTON S foul offensive (1 - 3)
02:16				35 WASHINGTON S turnover offensive (1)
02:07	24 AIFUWA F 2pt FG from turnover in the paint, layup made (4)	<b>17-12</b>	<b>5</b>	
02:07	3 POINTER K assist (2)			
02:01				Timeout 30 Sec
02:01				35 WASHINGTON S substitution out
02:01				12 WASHINGTON D substitution in
01:44		<b>17-15</b>	<b>2</b>	50 SMITH K 3pt FG , jump shot made (5)
01:44				3 CAMBRIDGE J assist (1)



Official Basketball Play by Play - 1st Period  
**Vanderbilt at LSU**  
 01/16/22 Maravich Assembly Center, Baton Rouge  
 2021-22 Women's Basketball

**Game Time:** 12:00 PM  
**Game Duration:** 1:51  
**Attendance:** 6,853

**Officials:** Joseph Vaszily, Ashley Goode, Eric Koch

Game Time	LSU	Score	Diff	VAN
01:30	3 POINTER K 2pt FG in the paint, layup made (5)	<b>19-15</b>	<b>4</b>	
01:17	24 AIFUWA F foul personal (1 - 2)			23 MOORE I foul drawn (1)
01:06				12 WASHINGTON D 2pt FG outside the paint, jump shot missed
01:04	3 POINTER K defensive rebound (2)			
00:59	1 CHERRY J 2pt FG outside the paint, jump shot missed			
00:56	32 TRASI A offensive rebound (3)			
00:49	24 AIFUWA F 2pt FG second chance in the paint, layup made (6)	<b>21-15</b>	<b>6</b>	
00:49	1 CHERRY J assist (2)			
00:31				23 MOORE I 2pt FG outside the paint, jump shot missed
00:29	24 AIFUWA F defensive rebound (2)			
00:25	jump ball situation			
00:25	45 MORRIS A turnover lost ball (1)			3 CAMBRIDGE J steal (1)
00:25	45 MORRIS A substitution out			
00:25	10 PAYNE R substitution in			
00:25				12 WASHINGTON D substitution out
00:25				23 MOORE I substitution out
00:25				5 CHAMBERS Y substitution in
00:25				13 FLOURNOY D substitution in
00:03				3 CAMBRIDGE J 2pt FG from turnover outside the paint, jump shot missed
00:00				50 SMITH K offensive rebound (3)
<b>END OF PERIOD</b>				
<b>LSU 21-15 VAN</b>				



**Vanderbilt at LSU**

01/16/22 Maravich Assembly Center, Baton Rouge  
2021-22 Women's Basketball

Game Time: 12:00 PM  
Game Duration: 1:51  
Attendance: 6,853

Officials: Joseph Vaszily, Ashley Goode, Eric Koch

**Vanderbilt - 15**

NO.	Name	Min	FG			Rebounds			Fouls		TP	AS	TO	ST	Blocks		+/-
			M-A	3P	FT	OR	DR	TOT	PF	FD					BS	BA	
15	Brinae Alexander	F 10:00	3-5	1-2	1-1	1	1	2	1	1	8	0	1	0	0	0	-6
50	Kaylon Smith	F 10:00	2-3	1-1	0-0	2	1	3	1	0	5	1	1	2	0	0	-6
3	Jordyn Cambridge	G 10:00	1-5	0-1	0-0	0	2	2	0	0	2	1	2	1	0	0	-6
12	Demi Washington	G 09:07	0-2	0-0	0-0	1	0	1	0	0	0	0	0	0	0	0	-4
21	Bella LaChance	G 01:43	0-0	0-0	0-0	0	0	0	0	0	0	1	0	0	0	0	0
23	Iyana Moore	07:52	0-1	0-0	0-0	1	1	2	0	1	0	0	2	0	0	0	-6
35	Sacha Washington	00:28	0-0	0-0	0-0	0	0	0	1	0	0	0	1	0	0	0	-2
5	Yaubryon Chambers	00:25	0-0	0-0	0-0	0	0	0	0	0	0	0	0	0	0	0	0
13	De'Mauri Flournoy	00:25	0-0	0-0	0-0	0	0	0	0	0	0	0	0	0	0	0	0
Team						0	0	0			0		0				
<b>Totals</b>			6-16	2-4	1-1	5	5	10	3	2	15	3	7	3	0	0	-6

Shooting By Period		
1st FG%	6-16	37.5%
3PT%	2-4	50.0%
FT%	1-1	100%
GM FG%	6-16	37.5%
3PT%	2-4	50.0%
FT%	1-1	100.0%

Dead Ball Rebounds: 0, 0

Technical Fouls::NONE

**LSU - 21**

NO.	Name	Min	FG			Rebounds			Fouls		TP	AS	TO	ST	Blocks		+/-
			M-A	3P	FT	OR	DR	TOT	PF	FD					BS	BA	
32	Awa Trasi	F 07:04	0-2	0-0	0-0	3	0	3	0	1	0	0	0	0	0	0	6
24	Faustine Aifuwa	C 10:00	3-3	0-0	0-0	1	1	2	1	0	6	1	1	1	0	0	6
1	Jailin Cherry	G 10:00	1-4	0-0	0-0	1	1	2	0	0	2	2	1	1	0	0	6
3	Khayla Pointer	G 10:00	2-4	0-2	1-2	0	2	2	1	1	5	2	0	1	0	0	6
45	Alexis Morris	G 09:35	4-5	0-1	0-0	0	1	1	0	1	8	1	1	0	0	0	6
20	Hannah Gusters	02:56	0-1	0-0	0-0	0	0	0	0	0	0	0	1	0	0	0	0
10	Ryann Payne	00:25	0-0	0-0	0-0	0	0	0	0	0	0	0	0	0	0	0	0
Team						0	0	0			0		0				
<b>Totals</b>			10-19	0-3	1-2	5	5	10	2	3	21	6	4	3	0	0	6

Shooting By Period		
1st FG%	10-19	52.6%
3PT%	0-3	0.0%
FT%	1-2	50%
GM FG%	10-19	52.6%
3PT%	0-3	0.0%
FT%	1-2	50.0%

Dead Ball Rebounds: 0, 0

Technical Fouls::NONE

	VAN	LSU
Biggest lead	1 (1 <sup>st</sup> 8:17)	6 (1 <sup>st</sup> 0:49)
Best Scoring Run	3 (1 <sup>st</sup> 8:17)	4 (1 <sup>st</sup> 7:12)
Lead Changes	2	
Times Tied	2	
Time with Lead	00:27	08:23

Points from	VAN	LSU
Turnovers	5	9
Paint	4	12
Second Chance	5	8
Fast Breaks	3	4
Bench	0	0

	Period by Period Scoring				
	1st	2nd	3rd	4th	TOT
VAN	15	21	9	19	64
LSU	21	22	23	16	82



**Period 2**

**Quarter Starters:**

<b>LSU</b>	1 Cherry J	3 Pointer K	10 Payne R	24 Aifuwa F	32 Trasi A
<b>VAN</b>	3 Cambridge J	5 Chambers Y	13 Flournoy D	15 Alexander B	50 Smith K

Game Time	LSU	Score	Diff	VAN
09:49	32 TRASI A foul offensive (1 - 1)			50 SMITH K foul drawn (1)
09:49	32 TRASI A turnover offensive (1)			
09:29	32 TRASI A foul shooting (2 - 2)			15 ALEXANDER B foul drawn (2)
09:29	32 TRASI A substitution out			
09:29	20 GUSTERS H substitution in			
09:29		<b>21-16</b>	<b>5</b>	15 ALEXANDER B free throw 1 - 2 made (9)
09:29		<b>21-17</b>	<b>4</b>	15 ALEXANDER B free throw 2 - 2 made (10)
09:18	10 PAYNE R 2pt FG outside the paint, jump shot made (2)	<b>23-17</b>	<b>6</b>	
09:18	3 POINTER K assist (3)			
09:07				13 FLOURNOY D 2pt FG in the paint, layup missed
09:05	20 GUSTERS H defensive rebound (1)			
08:52	3 POINTER K 2pt FG in the paint, jump shot missed			
08:49	1 CHERRY J offensive rebound (3)			
08:41	3 POINTER K foul drawn (2)			3 CAMBRIDGE J foul personal (1 - 1)
08:41				13 FLOURNOY D substitution out
08:41				50 SMITH K substitution out
08:41				23 MOORE I substitution in
08:41				35 WASHINGTON S substitution in
08:32	24 AIFUWA F 2pt FG second chance in the paint, layup made (8)	<b>25-17</b>	<b>8</b>	
08:32	20 GUSTERS H assist (1)			
07:59		<b>25-19</b>	<b>6</b>	23 MOORE I 2pt FG outside the paint, jump shot made (2)
07:43	10 PAYNE R 3pt FG , jump shot made (5)	<b>28-19</b>	<b>9</b>	
07:43	1 CHERRY J assist (3)			
07:34		<b>28-22</b>	<b>6</b>	23 MOORE I 3pt FG , jump shot made (5)
07:34				3 CAMBRIDGE J assist (2)
07:18	10 PAYNE R foul drawn (1)			3 CAMBRIDGE J foul personal (2 - 2)
07:18	20 GUSTERS H substitution out			
07:18	45 MORRIS A substitution in			
07:18				3 CAMBRIDGE J substitution out
07:18				13 FLOURNOY D substitution in
07:16	1 CHERRY J 2pt FG in the paint, jump shot missed			
07:13				5 CHAMBERS Y defensive rebound (1)
07:06	45 MORRIS A steal (1)			23 MOORE I turnover lost ball (3)
06:46	45 MORRIS A 3pt FG from turnover, jump shot made (11)	<b>31-22</b>	<b>9</b>	
06:46	1 CHERRY J assist (4)			
06:43				Timeout 30 Sec
06:43				5 CHAMBERS Y substitution out
06:43				35 WASHINGTON S substitution out
06:43				12 WASHINGTON D substitution in
06:43				50 SMITH K substitution in
06:21				13 FLOURNOY D 3pt FG , jump shot missed
06:21	10 PAYNE R defensive rebound (1)			



**Officials:** Joseph Vaszily, Ashley Goode, Eric Koch

Game Time	LSU	Score	Diff	VAN
06:19	24 AIFUWA F 2pt FG fast break in the paint, layup made (10)	<b>33-22</b>	<b>11</b>	
06:19	10 PAYNE R assist (1)			
06:19	24 AIFUWA F foul drawn (1)			13 FLOURNOY D foul shooting (1 - 3)
06:19				13 FLOURNOY D substitution out
06:19				21 LACHANCE B substitution in
06:19	24 AIFUWA F free throw fast break 1 - 1 missed			
06:17				12 WASHINGTON D defensive rebound (2)
05:52		<b>33-24</b>	<b>9</b>	23 MOORE I 2pt FG in the paint, layup made (7)
05:37	45 MORRIS A 2pt FG outside the paint, jump shot made (13)	<b>35-24</b>	<b>11</b>	
05:37	1 CHERRY J assist (5)			
05:12				15 ALEXANDER B 2pt FG outside the paint, jump shot missed
05:08				50 SMITH K offensive rebound (4)
05:05		<b>35-27</b>	<b>8</b>	15 ALEXANDER B 3pt FG second chance, jump shot made (13)
05:05				50 SMITH K assist (2)
04:49	45 MORRIS A 2pt FG in the paint, layup blocked			
04:49				50 SMITH K block (1)
04:44				23 MOORE I defensive rebound (3)
04:42				23 MOORE I 2pt FG in the paint, layup missed
04:39	24 AIFUWA F defensive rebound (3)			
04:38	45 MORRIS A 2pt FG fast break in the paint, layup made (15)	<b>37-27</b>	<b>10</b>	
04:38	24 AIFUWA F assist (2)			
04:16				12 WASHINGTON D 2pt FG in the paint, jump shot missed
04:15	3 POINTER K defensive rebound (3)			
04:15	3 POINTER K foul drawn (3)			12 WASHINGTON D foul personal (1 - 4)
04:15	24 AIFUWA F substitution out			
04:15	20 GUSTERS H substitution in			
04:06	10 PAYNE R 2pt FG in the paint, jump shot missed			
04:02				12 WASHINGTON D defensive rebound (3)
03:53				15 ALEXANDER B 3pt FG , jump shot missed
03:49	20 GUSTERS H defensive rebound (2)			
03:45	45 MORRIS A turnover bad pass (2)			23 MOORE I steal (1)
03:40	3 POINTER K foul shooting (2 - 3)			15 ALEXANDER B foul drawn (3)
03:40	3 POINTER K substitution out			
03:40	21 WARE T substitution in			
03:40		<b>37-28</b>	<b>9</b>	15 ALEXANDER B free throw fast break 1 - 2 made (14)
03:40		<b>37-29</b>	<b>8</b>	15 ALEXANDER B free throw fast break 2 - 2 made (15)
03:40	10 PAYNE R substitution out			
03:40	24 AIFUWA F substitution in			
03:16	1 CHERRY J foul drawn (1)			15 ALEXANDER B foul shooting (2 - 5)
03:16	21 WARE T substitution out			
03:16	10 PAYNE R substitution in			
03:16				15 ALEXANDER B substitution out
03:16				35 WASHINGTON S substitution in
03:16	1 CHERRY J free throw 1 - 2 missed			
03:16	offensive dead ball rebound (1)			
03:16	1 CHERRY J free throw 2 - 2 made (3)	<b>38-29</b>	<b>9</b>	
02:47		<b>38-31</b>	<b>7</b>	23 MOORE I 2pt FG outside the paint, jump shot made (9)
02:20	20 GUSTERS H 2pt FG in the paint, jump shot missed			
02:17				23 MOORE I defensive rebound (4)



**Officials:** Joseph Vaszily, Ashley Goode, Eric Koch

Game Time	LSU	Score	Diff	VAN
02:13		<b>38-33</b>	<b>5</b>	50 SMITH K 2pt FG fast break in the paint, layup made (7)
02:13				23 MOORE I assist (1)
01:55	45 MORRIS A foul drawn (2)			50 SMITH K foul shooting (2 - 6)
01:55	20 GUSTERS H substitution out			
01:55	14 SHEMATSI S substitution in			
01:55				50 SMITH K substitution out
01:55				5 CHAMBERS Y substitution in
01:55	45 MORRIS A free throw 1 - 2 missed			
01:55	offensive dead ball rebound (2)			
01:55	45 MORRIS A free throw 2 - 2 made (16)	<b>39-33</b>	<b>6</b>	
01:43				12 WASHINGTON D 2pt FG in the paint, jump shot missed
01:40	1 CHERRY J defensive rebound (4)			
01:27	24 AIFUWA F foul offensive (2 - 4)			35 WASHINGTON S foul drawn (1)
01:27	24 AIFUWA F turnover offensive (2)			
01:27	24 AIFUWA F substitution out			
01:27	23 BARTLETT A substitution in			
01:05				23 MOORE I 2pt FG from turnover in the paint, layup blocked
01:05	14 SHEMATSI S block (1)			
01:05	45 MORRIS A defensive rebound (2)			
00:59	45 MORRIS A 2pt FG fast break in the paint, jump shot made (18)	<b>41-33</b>	<b>8</b>	
00:49				12 WASHINGTON D 2pt FG outside the paint, jump shot missed
00:46	45 MORRIS A defensive rebound (3)			
00:44	1 CHERRY J 2pt FG fast break in the paint, layup made (5)	<b>43-33</b>	<b>10</b>	
00:44	45 MORRIS A assist (2)			
00:19				21 LACHANCE B 2pt FG in the paint, jump shot missed
00:16				35 WASHINGTON S offensive rebound (1)
00:06		<b>43-36</b>	<b>7</b>	23 MOORE I 3pt FG second chance, jump shot made (12)
<b>END OF PERIOD</b>				
<b>LSU 43-36 VAN</b>				





**Vanderbilt at LSU**

01/16/22 Maravich Assembly Center, Baton Rouge  
2021-22 Women's Basketball

Game Time: 12:00 PM  
Game Duration: 1:51  
Attendance: 6,853

Officials: Joseph Vaszily, Ashley Goode, Eric Koch

**Vanderbilt - 21**

NO.	Name	F	Min	FG			Rebounds			Fouls		TP	AS	TO	ST	Blocks		+/-
				M-A	M-A	M-A	OR	DR	TOT	PF	FD					BS	BA	
15	Brinae Alexander	F	06:44	1-3	1-2	4-4	0	0	0	1	2	7	0	0	0	0	0	-2
50	Kaylon Smith	F	06:07	1-1	0-0	0-0	1	0	1	1	1	2	1	0	0	1	0	4
3	Jordyn Cambridge	G	02:42	0-0	0-0	0-0	0	0	0	2	0	0	1	0	0	0	0	0
12	Demi Washington	G	06:43	0-3	0-0	0-0	0	2	2	1	0	0	0	0	0	0	0	2
21	Bella LaChance	G	06:19	0-1	0-0	0-0	0	0	0	0	0	0	0	0	0	0	0	4
23	Iyana Moore		08:41	5-7	2-2	0-0	0	2	2	0	0	12	1	1	1	0	1	-1
35	Sacha Washington		05:14	0-0	0-0	0-0	1	0	1	0	1	0	0	0	0	0	0	-2
13	De'Mauri Flournoy		02:18	0-2	0-1	0-0	0	0	0	1	0	0	0	0	0	0	0	-5
5	Yaubryon Chambers		05:12	0-0	0-0	0-0	0	1	1	0	0	0	0	0	0	0	0	-5
Team							0	0	0		0		0					
<b>Totals</b>				7-17	3-5	4-4	2	5	7	6	4	21	3	1	1	1	1	-1

Shooting By Period		
2 <sup>nd</sup> FG%	7-17	41.2%
3PT%	3-5	60.0%
FT%	4-4	100%
GM FG%	7-17	41.2%
3PT%	3-5	60.0%
FT%	4-4	100.0%

Dead Ball Rebounds: 0, 0

Technical Fouls::NONE

**LSU - 22**

NO.	Name	F	Min	FG			Rebounds			Fouls		TP	AS	TO	ST	Blocks		+/-
				M-A	M-A	M-A	OR	DR	TOT	PF	FD					BS	BA	
32	Awa Trasi	F	00:31	0-0	0-0	0-0	0	0	0	2	0	0	0	1	0	0	0	0
24	Faustine Aifuwa	C	07:58	2-2	0-0	0-1	0	1	1	1	1	4	1	1	0	0	0	2
1	Jailin Cherry	G	10:00	1-2	0-0	1-2	1	1	2	0	1	3	3	0	0	0	0	1
3	Khayla Pointer	G	06:20	0-1	0-0	0-0	0	1	1	1	2	0	1	0	0	0	0	4
45	Alexis Morris	G	07:18	4-5	1-1	1-2	0	2	2	0	1	10	1	1	1	0	1	1
20	Hannah Gusters		04:31	0-1	0-0	0-0	0	2	2	0	0	0	1	0	0	0	0	-5
21	Timia Ware		00:24	0-0	0-0	0-0	0	0	0	0	0	0	0	0	0	0	0	-2
10	Ryann Payne		09:36	2-3	1-1	0-0	0	1	1	0	1	5	1	0	0	0	0	1
14	Sarah Shematsi		01:55	0-0	0-0	0-0	0	0	0	0	0	0	0	0	0	1	0	2
23	Amani Bartlett		01:27	0-0	0-0	0-0	0	0	0	0	0	0	0	0	0	0	0	1
Team							0	0	0		0		0					
<b>Totals</b>				9-14	2-2	2-5	1	8	9	4	6	22	8	3	1	1	1	1

Shooting By Period		
2 <sup>nd</sup> FG%	9-14	64.3%
3PT%	2-2	100.0%
FT%	2-5	40%
GM FG%	9-14	64.3%
3PT%	2-2	100.0%
FT%	2-5	40.0%

Dead Ball Rebounds: 2, 0

Technical Fouls::NONE

	VAN	LSU
Biggest lead	0 (1 <sup>st</sup> 10:00)	11 (2 <sup>nd</sup> 6:19)
Best Scoring Run	4(2 <sup>nd</sup> 2:13)	5(2 <sup>nd</sup> 6:19)
Lead Changes	0	
Times Tied	0	
Time with Lead	00:00	09:29

Points from	VAN	LSU
Turnovers	4	3
Paint	4	10
Second Chance	6	2
Fast Breaks	4	8
Bench	12	5

Period by Period Scoring					
	1st	2nd	3rd	4th	TOT
VAN	15	21	9	19	64
LSU	21	22	23	16	82



**Vanderbilt at LSU**

01/16/22 Maravich Assembly Center, Baton Rouge  
2021-22 Women's Basketball

Game Time: 12:00 PM  
Game Duration: 1:51  
Attendance: 6,853

Officials: Joseph Vaszily, Ashley Goode, Eric Koch

**Vanderbilt - 36**

NO.	Name	F	Min	FG			Rebounds			Fouls		TP	AS	TO	ST	Blocks		+/-
				M-A	M-A	M-A	OR	DR	TOT	PF	FD					BS	BA	
15	Brinae Alexander	F	16:44	4-8	2-4	5-5	1	1	2	2	3	15	0	1	0	0	0	-8
50	Kaylon Smith	F	16:07	3-4	1-1	0-0	3	1	4	2	1	7	2	1	2	1	0	-2
3	Jordyn Cambridge	G	12:42	1-5	0-1	0-0	0	2	2	2	0	2	2	2	1	0	0	-6
12	Demi Washington	G	15:50	0-5	0-0	0-0	1	2	3	1	0	0	0	0	0	0	0	-2
21	Bella LaChance	G	08:02	0-1	0-0	0-0	0	0	0	0	0	0	1	0	0	0	0	4
23	Iyana Moore		16:33	5-8	2-2	0-0	1	3	4	0	1	12	1	3	1	0	1	-7
35	Sacha Washington		05:42	0-0	0-0	0-0	1	0	1	1	1	0	0	1	0	0	0	-4
5	Yaubryon Chambers		05:37	0-0	0-0	0-0	0	1	1	0	0	0	0	0	0	0	0	-5
13	De'Mauri Flournoy		02:43	0-2	0-1	0-0	0	0	0	1	0	0	0	0	0	0	0	-5
Team							0	0	0			0		0				
<b>Totals</b>				13-33	5-9	5-5	7	10	17	9	6	36	6	8	4	1	1	-7

Shooting By Period		
1 <sup>st</sup> FG%	6-16	37.5%
3PT%	2-4	50.0%
FT%	1-1	100%
2 <sup>nd</sup> FG%	7-17	41.2%
3PT%	3-5	60.0%
FT%	4-4	100%
GM FG%	13-33	39.4%
3PT%	5-9	55.6%
FT%	5-5	100.0%

Dead Ball Rebounds: 0, 0

Technical Fouls::NONE

**LSU - 43**

NO.	Name	F	Min	FG			Rebounds			Fouls		TP	AS	TO	ST	Blocks		+/-
				M-A	M-A	M-A	OR	DR	TOT	PF	FD					BS	BA	
32	Awa Trasi	F	07:35	0-2	0-0	0-0	3	0	3	2	1	0	0	1	0	0	0	6
24	Faustine Aifuwa	C	17:58	5-5	0-0	0-1	1	2	3	2	1	10	2	2	1	0	0	8
1	Jailin Cherry	G	20:00	2-6	0-0	1-2	2	2	4	0	1	5	5	1	1	0	0	7
3	Khayla Pointer	G	16:20	2-5	0-2	1-2	0	3	3	2	3	5	3	0	1	0	0	10
45	Alexis Morris	G	16:53	8-10	1-2	1-2	0	3	3	0	2	18	2	2	1	0	1	7
20	Hannah Gusters		07:27	0-2	0-0	0-0	0	2	2	0	0	0	1	1	0	0	0	-5
10	Ryann Payne		10:01	2-3	1-1	0-0	0	1	1	0	1	5	1	0	0	0	0	1
21	Timia Ware		00:24	0-0	0-0	0-0	0	0	0	0	0	0	0	0	0	0	0	-2
14	Sarah Shematsi		01:55	0-0	0-0	0-0	0	0	0	0	0	0	0	0	0	1	0	2
23	Amani Bartlett		01:27	0-0	0-0	0-0	0	0	0	0	0	0	0	0	0	0	0	1
Team							0	0	0			0		0				
<b>Totals</b>				19-33	2-5	3-7	6	13	19	6	9	43	14	7	4	1	1	7

Shooting By Period		
1 <sup>st</sup> FG%	10-19	52.6%
3PT%	0-3	0.0%
FT%	1-2	50%
2 <sup>nd</sup> FG%	9-14	64.3%
3PT%	2-2	100.0%
FT%	2-5	40%
GM FG%	19-33	57.6%
3PT%	2-5	40.0%
FT%	3-7	42.9%

Dead Ball Rebounds: 2, 0

Technical Fouls::NONE

	VAN	LSU
Biggest lead	1 (1 <sup>st</sup> 8:17)	11 (2 <sup>nd</sup> 6:19)
Best Scoring Run	4(2 <sup>nd</sup> 2:13)	5(2 <sup>nd</sup> 6:19)
Lead Changes	2	
Times Tied	2	
Time with Lead	00:27	18:23

	VAN	LSU
Points from		
Turnovers	9	12
Paint	8	22
Second Chance	11	10
Fast Breaks	7	12
Bench	12	5

	Period by Period Scoring				
	1st	2nd	3rd	4th	TOT
VAN	15	21	9	19	64
LSU	21	22	23	16	82



**Period 3**

**Quarter Starters:**

<b>LSU</b>	1 Cherry J	45 Morris A	3 Pointer K	24 Aifuwa F	32 Trasi A
<b>VAN</b>	12 Washington D	3 Cambridge J	15 Alexander B	50 Smith K	23 Moore I

Game Time	LSU	Score	Diff	VAN
10:00	10 PAYNE R substitution out			
10:00	14 SHEMATSI S substitution out			
10:00	23 BARTLETT A substitution out			
10:00	3 POINTER K substitution in			
10:00	24 AIFUWA F substitution in			
10:00	32 TRASI A substitution in			
10:00				5 CHAMBERS Y substitution out
10:00				35 WASHINGTON S substitution out
10:00				3 CAMBRIDGE J substitution in
10:00				15 ALEXANDER B substitution in
10:00				50 SMITH K substitution in
10:00				21 LACHANCE B substitution out
09:40				15 ALEXANDER B 2pt FG outside the paint, jump shot missed
09:40	defensive rebound (20)			
09:27	1 CHERRY J 2pt FG outside the paint, jump shot missed			
09:25	32 TRASI A offensive rebound (4)			
09:24	24 AIFUWA F 2pt FG second chance in the paint, layup made (12)	<b>45-36</b>	<b>9</b>	
09:24	32 TRASI A assist (1)			
09:09				15 ALEXANDER B 3pt FG , jump shot missed
09:07	45 MORRIS A defensive rebound (4)			
09:02	3 POINTER K 2pt FG fast break outside the paint, jump shot made (7)	<b>47-36</b>	<b>11</b>	
08:34				50 SMITH K 3pt FG , jump shot missed
08:31	1 CHERRY J defensive rebound (5)			
08:14	3 POINTER K 2pt FG in the paint, layup made (9)	<b>49-36</b>	<b>13</b>	
07:47				23 MOORE I 3pt FG , jump shot missed
07:44				12 WASHINGTON D offensive rebound (4)
07:43	45 MORRIS A foul personal (1 - 1)			12 WASHINGTON D foul drawn (1)
07:39				12 WASHINGTON D 2pt FG second chance outside the paint, jump shot missed
07:36				3 CAMBRIDGE J offensive rebound (3)
07:34	1 CHERRY J steal (2)			3 CAMBRIDGE J turnover lost ball (3)
07:32	1 CHERRY J 2pt FG fast break from turnover in the paint, layup made (7)	<b>51-36</b>	<b>15</b>	
07:07				12 WASHINGTON D 2pt FG in the paint, layup blocked
07:07	3 POINTER K block (1)			
07:03				12 WASHINGTON D offensive rebound (5)
07:02	24 AIFUWA F foul shooting (3 - 2)			12 WASHINGTON D foul drawn (2)
07:02		<b>51-37</b>	<b>14</b>	12 WASHINGTON D free throw 1 - 2 made (1)
07:02				12 WASHINGTON D free throw 2 - 2 missed
07:02	32 TRASI A defensive rebound (5)			
06:52	32 TRASI A 2pt FG in the paint, layup missed			
06:48	24 AIFUWA F offensive rebound (4)			



**Officials:** Joseph Vaszily, Ashley Goode, Eric Koch

Game Time	LSU	Score	Diff	VAN
06:48	24 AIFUWA F 2pt FG second chance in the paint, layup made (14)	<b>53-37</b>	<b>16</b>	
06:47	Timeout 30 Sec			
06:47	24 AIFUWA F substitution out			
06:47	20 GUSTERS H substitution in			
06:23				15 ALEXANDER B 2pt FG in the paint, jump shot missed
06:21				offensive rebound (21)
06:18				3 CAMBRIDGE J 2pt FG second chance in the paint, layup blocked
06:18	32 TRASI A block (1)			
06:11	32 TRASI A defensive rebound (6)			
06:08	3 POINTER K turnover bad pass (1)			15 ALEXANDER B steal (1)
06:00		<b>53-39</b>	<b>14</b>	50 SMITH K 2pt FG fast break from turnover in the paint, layup made (9)
06:00				23 MOORE I assist (2)
05:48	45 MORRIS A turnover lost ball (3)			15 ALEXANDER B steal (2)
05:44		<b>53-41</b>	<b>12</b>	23 MOORE I 2pt FG fast break from turnover in the paint, layup made (14)
05:44				15 ALEXANDER B assist (1)
05:28				23 MOORE I substitution out
05:28				13 FLOURNOY D substitution in
05:24	3 POINTER K turnover bad pass (2)			3 CAMBRIDGE J steal (2)
05:23		<b>53-43</b>	<b>10</b>	3 CAMBRIDGE J 2pt FG from turnover in the paint, layup made (4)
05:23	20 GUSTERS H foul shooting (1 - 3)			3 CAMBRIDGE J foul drawn (1)
05:23	20 GUSTERS H substitution out			
05:23	24 AIFUWA F substitution in			
05:23				3 CAMBRIDGE J free throw fast break 1 - 1 missed
05:23	24 AIFUWA F defensive rebound (5)			
05:03	45 MORRIS A turnover travel (4)			
04:45				13 FLOURNOY D 3pt FG from turnover, jump shot missed
04:42	3 POINTER K defensive rebound (4)			
04:40	1 CHERRY J 2pt FG fast break in the paint, layup made (9)	<b>55-43</b>	<b>12</b>	
04:40	3 POINTER K assist (4)			
04:31				50 SMITH K 2pt FG outside the paint, jump shot missed
04:28	3 POINTER K defensive rebound (5)			
04:23	24 AIFUWA F 2pt FG outside the paint, jump shot missed			
04:20				12 WASHINGTON D defensive rebound (6)
04:09				15 ALEXANDER B 3pt FG, jump shot missed
04:04	1 CHERRY J defensive rebound (6)			
03:55	45 MORRIS A 2pt FG in the paint, jump shot made (20)	<b>57-43</b>	<b>14</b>	
03:31				50 SMITH K 2pt FG outside the paint, jump shot missed
03:31	1 CHERRY J defensive rebound (7)			
03:31	Timeout media			
03:31				13 FLOURNOY D substitution out
03:31				50 SMITH K substitution out
03:31				23 MOORE I substitution in
03:31				35 WASHINGTON S substitution in
03:15	jump ball situation			
03:10	3 POINTER K 2pt FG in the paint, layup made (11)	<b>59-43</b>	<b>16</b>	



Official Basketball Play by Play - 3rd Period  
**Vanderbilt at LSU**  
 01/16/22 Maravich Assembly Center, Baton Rouge  
 2021-22 Women's Basketball

**Game Time:** 12:00 PM  
**Game Duration:** 1:51  
**Attendance:** 6,853

**Officials:** Joseph Vaszily, Ashley Goode, Eric Koch

Game Time	LSU	Score	Diff	VAN
02:56		<b>59-45</b>	<b>14</b>	15 ALEXANDER B 2pt FG outside the paint, jump shot made (17)
02:42	3 POINTER K foul drawn (4)			35 WASHINGTON S foul personal (2 - 1)
02:28	32 TRASI A foul drawn (2)			35 WASHINGTON S foul shooting (3 - 2)
02:28				3 CAMBRIDGE J substitution out
02:28				35 WASHINGTON S substitution out
02:28				21 LACHANCE B substitution in
02:28				50 SMITH K substitution in
02:28	32 TRASI A free throw 1 - 2 missed			
02:28	offensive dead ball rebound (3)			
02:28	32 TRASI A free throw 2 - 2 made (1)	<b>60-45</b>	<b>15</b>	
02:28	24 AIFUWA F substitution out			
02:28	14 SHEMATSI S substitution in			
02:16	45 MORRIS A steal (2)			23 MOORE I turnover lost ball (4)
02:04	3 POINTER K foul drawn (5)			15 ALEXANDER B foul shooting (3 - 3)
02:04	3 POINTER K free throw 1 - 2 made (12)	<b>61-45</b>	<b>16</b>	
02:04	3 POINTER K free throw 2 - 2 made (13)	<b>62-45</b>	<b>17</b>	
01:46				15 ALEXANDER B 2pt FG in the paint, layup missed
01:41	14 SHEMATSI S defensive rebound (1)			
01:41	14 SHEMATSI S turnover lost ball (1)			23 MOORE I steal (2)
01:38				23 MOORE I 2pt FG from turnover in the paint, layup missed
01:38	3 POINTER K defensive rebound (6)			
01:38	3 POINTER K foul drawn (6)			15 ALEXANDER B foul personal (4 - 4)
01:38				15 ALEXANDER B substitution out
01:38				5 CHAMBERS Y substitution in
01:30	32 TRASI A 2pt FG fast break in the paint, jump shot made (3)	<b>64-45</b>	<b>19</b>	
01:30	3 POINTER K assist (5)			
01:28				Timeout 60 Sec
01:06	3 POINTER K steal (2)			21 LACHANCE B turnover lost ball (1)
01:03	3 POINTER K 2pt FG fast break from turnover in the paint, layup made (15)	<b>66-45</b>	<b>21</b>	
01:03	1 CHERRY J assist (6)			
00:39				23 MOORE I 2pt FG in the paint, jump shot missed
00:36	45 MORRIS A defensive rebound (5)			
00:35	45 MORRIS A foul offensive (2 - 4)			12 WASHINGTON D foul drawn (3)
00:35	45 MORRIS A turnover offensive (5)			
00:12				50 SMITH K 2pt FG from turnover outside the paint, jump shot missed
00:09	1 CHERRY J defensive rebound (8)			
00:02	45 MORRIS A 3pt FG , jump shot missed			
00:00				50 SMITH K defensive rebound (5)
<b>END OF PERIOD</b>				
<b>LSU 66-45 VAN</b>				



**Vanderbilt at LSU**

01/16/22 Maravich Assembly Center, Baton Rouge  
2021-22 Women's Basketball

Game Time: 12:00 PM  
Game Duration: 1:51  
Attendance: 6,853

Officials: Joseph Vaszily, Ashley Goode, Eric Koch

**Vanderbilt - 9**

NO.	Name	Min	FG			Rebounds			Fouls		TP	AS	TO	ST	Blocks		+/-
			M-A	3P	FT	OR	DR	TOT	PF	FD					BS	BA	
15	Brinae Alexander	F 08:22	1-6	0-2	0-0	0	0	0	2	0	2	1	0	2	0	0	-10
50	Kaylon Smith	F 08:57	1-5	0-1	0-0	0	1	1	0	0	2	0	0	0	0	0	-14
3	Jordyn Cambridge	G 07:32	1-2	0-0	0-1	1	0	1	0	1	2	0	1	1	0	1	-7
12	Demi Washington	G 10:00	0-2	0-0	1-2	2	1	3	0	3	1	0	0	0	0	1	-14
21	Bella LaChance	G 02:28	0-0	0-0	0-0	0	0	0	0	0	0	0	1	0	0	0	-7
13	De'Mauri Flournoy	01:57	0-1	0-1	0-0	0	0	0	0	0	0	0	0	0	0	0	-2
23	Iyana Moore	08:03	1-4	0-1	0-0	0	0	0	0	0	2	1	1	1	0	0	-12
35	Sacha Washington	01:03	0-0	0-0	0-0	0	0	0	2	0	0	0	0	0	0	0	0
5	Yaubryon Chambers	01:38	0-0	0-0	0-0	0	0	0	0	0	0	0	0	0	0	0	-4
Team						1	0	1			0		0				
<b>Totals</b>			4-20	0-5	1-3	4	2	6	4	4	9	2	3	4	0	2	-14

Shooting By Period		
3rd FG%	4-20	20.0%
3PT%	0-5	0.0%
FT%	1-3	33.3%
GM FG%	4-20	20.0%
3PT%	0-5	0.0%
FT%	1-3	33.3%

Dead Ball Rebounds: 0, 0

Technical Fouls::NONE

**LSU - 23**

NO.	Name	Min	FG			Rebounds			Fouls		TP	AS	TO	ST	Blocks		+/-
			M-A	3P	FT	OR	DR	TOT	PF	FD					BS	BA	
32	Awa Trasi	F 10:00	1-2	0-0	1-2	1	2	3	0	1	3	1	0	0	1	0	14
24	Faustine Aifuwa	C 06:08	2-3	0-0	0-0	1	1	2	1	0	4	0	0	0	0	0	14
1	Jailin Cherry	G 10:00	2-3	0-0	0-0	0	4	4	0	0	4	1	0	1	0	0	14
3	Khayla Pointer	G 10:00	4-4	0-0	2-2	0	3	3	0	3	10	2	2	1	1	0	14
45	Alexis Morris	G 10:00	1-2	0-1	0-0	0	2	2	2	0	2	0	3	1	0	0	14
10	Ryann Payne	00:00	0-0	0-0	0-0	0	0	0	0	0	0	0	0	0	0	0	0
23	Amani Bartlett	00:00	0-0	0-0	0-0	0	0	0	0	0	0	0	0	0	0	0	0
20	Hannah Gusters	01:24	0-0	0-0	0-0	0	0	0	1	0	0	0	0	0	0	0	-6
14	Sarah Shematsi	02:28	0-0	0-0	0-0	0	1	1	0	0	0	0	1	0	0	0	6
Team						0	1	1			0		0				
<b>Totals</b>			10-14	0-1	3-4	2	14	16	4	4	23	4	6	3	2	0	14

Shooting By Period		
3rd FG%	10-14	71.4%
3PT%	0-1	0.0%
FT%	3-4	75%
GM FG%	10-14	71.4%
3PT%	0-1	0.0%
FT%	3-4	75.0%

Dead Ball Rebounds: 1, 0

Technical Fouls::NONE

	VAN	LSU
Biggest lead	0 (1 <sup>st</sup> 10:00)	21 (3 <sup>rd</sup> 1:03)
Best Scoring Run	6(3 <sup>rd</sup> 5:23)	8(3 <sup>rd</sup> 7:32)
Lead Changes	0	
Times Tied	0	
Time with Lead	00:00	09:40

Points from	VAN	LSU
Turnovers	6	6
Paint	6	18
Second Chance	1	4
Fast Breaks	4	10
Bench	2	0

Period by Period Scoring					
	1st	2nd	3rd	4th	TOT
VAN	15	21	9	19	64
LSU	21	22	23	16	82



**Period 4**

**Quarter Starters:**

<b>LSU</b>	1 Cherry J	3 Pointer K	24 Aifuwa F	32 Trasi A	45 Morris A
<b>VAN</b>	5 Chambers Y	12 Washington D	21 LaChance B	23 Moore I	50 Smith K

Game Time	LSU	Score	Diff	VAN
10:00	14 SHEMATSI S substitution out			
10:00	24 AIFUWA F substitution in			
09:48				50 SMITH K 2pt FG outside the paint, jump shot missed
09:44				50 SMITH K offensive rebound (6)
09:30				12 WASHINGTON D 2pt FG second chance outside the paint, jump shot missed
09:27	32 TRASI A defensive rebound (7)			
09:19	32 TRASI A 2pt FG outside the paint, jump shot missed			
09:14				23 MOORE I defensive rebound (5)
09:06				21 LACHANCE B 2pt FG outside the paint, jump shot missed
09:04	3 POINTER K defensive rebound (7)			
09:00	1 CHERRY J 2pt FG fast break in the paint, layup made (11)	<b>68-45</b>	<b>23</b>	
09:00	3 POINTER K assist (6)			
08:26				21 LACHANCE B 3pt FG , jump shot missed
08:23				5 CHAMBERS Y offensive rebound (2)
08:20				50 SMITH K 2pt FG second chance in the paint, layup blocked
08:20	24 AIFUWA F block (1)			
08:20				offensive rebound (27)
08:20				5 CHAMBERS Y substitution out
08:20				12 WASHINGTON D substitution out
08:20				21 LACHANCE B substitution out
08:20				13 FLOURNOY D substitution in
08:20				15 ALEXANDER B substitution in
08:20				35 WASHINGTON S substitution in
08:17		<b>68-47</b>	<b>21</b>	15 ALEXANDER B 2pt FG second chance in the paint, jump shot made (19)
08:05	24 AIFUWA F 2pt FG in the paint, layup missed			
08:00				23 MOORE I defensive rebound (6)
07:54		<b>68-50</b>	<b>18</b>	15 ALEXANDER B 3pt FG , jump shot made (22)
07:54				23 MOORE I assist (3)
07:38	45 MORRIS A 2pt FG outside the paint, jump shot missed			
07:35	24 AIFUWA F offensive rebound (6)			
07:33	24 AIFUWA F turnover lost ball (3)			23 MOORE I steal (3)
07:29	3 POINTER K foul drawn (7)			23 MOORE I foul offensive (1 - 1)
07:29				23 MOORE I turnover offensive (5)
07:16	24 AIFUWA F 2pt FG from turnover in the paint, layup made (16)	<b>70-50</b>	<b>20</b>	
07:16	3 POINTER K assist (7)			
06:58	3 POINTER K steal (3)			13 FLOURNOY D turnover bad pass (1)
06:55	3 POINTER K 2pt FG fast break from turnover in the paint, layup made (17)	<b>72-50</b>	<b>22</b>	
06:29				15 ALEXANDER B 2pt FG in the paint, jump shot missed
06:26				13 FLOURNOY D offensive rebound (1)
06:22				23 MOORE I 3pt FG second chance, jump shot missed
06:19				15 ALEXANDER B offensive rebound (3)



**Officials:** Joseph Vaszily, Ashley Goode, Eric Koch

Game Time	LSU	Score	Diff	VAN
06:19	32 TRASI A foul personal (3 - 1)			15 ALEXANDER B foul drawn (4)
06:19				13 FLOURNOY D substitution out
06:19				21 LACHANCE B substitution in
06:19	45 MORRIS A foul personal (3 - 2)			50 SMITH K foul drawn (2)
06:17		<b>72-52</b>	<b>20</b>	15 ALEXANDER B 2pt FG second chance outside the paint, jump shot made (24)
05:56	24 AIFUWA F 2pt FG in the paint, jump shot made (18)	<b>74-52</b>	<b>22</b>	
05:56	1 CHERRY J assist (7)			
05:42				21 LACHANCE B 3pt FG , jump shot missed
05:40	24 AIFUWA F defensive rebound (7)			
05:40	24 AIFUWA F foul drawn (2)			35 WASHINGTON S foul personal (4 - 2)
05:30	24 AIFUWA F 2pt FG outside the paint, jump shot made (20)	<b>76-52</b>	<b>24</b>	
05:30	1 CHERRY J assist (8)			
05:11				15 ALEXANDER B 3pt FG , jump shot missed
05:08	45 MORRIS A defensive rebound (6)			
05:06	32 TRASI A foul drawn (3)			15 ALEXANDER B foul shooting (5 - 3)
05:06	Timeout media			
05:06	24 AIFUWA F substitution out			
05:06	20 GUSTERS H substitution in			
05:06				15 ALEXANDER B substitution out
05:06				35 WASHINGTON S substitution out
05:06				5 CHAMBERS Y substitution in
05:06				12 WASHINGTON D substitution in
05:06	32 TRASI A free throw fast break 1 - 2 missed			
05:06	offensive dead ball rebound (4)			
05:06	32 TRASI A free throw fast break 2 - 2 made (4)	<b>77-52</b>	<b>25</b>	
05:06	32 TRASI A substitution out			
05:06	14 SHEMATSI S substitution in			
04:48				23 MOORE I 3pt FG , jump shot missed
04:44	45 MORRIS A defensive rebound (7)			
04:34	1 CHERRY J turnover lost ball (2)			23 MOORE I steal (4)
04:34	1 CHERRY J foul personal (1 - 3)			23 MOORE I foul drawn (2)
04:18	3 POINTER K steal (4)			5 CHAMBERS Y turnover bad pass (1)
04:03	1 CHERRY J foul drawn (2)			5 CHAMBERS Y foul shooting (1 - 4)
04:03	1 CHERRY J free throw 1 - 2 missed			
04:03	offensive dead ball rebound (5)			
04:03	1 CHERRY J free throw 2 - 2 made (12)	<b>78-52</b>	<b>26</b>	
04:03	45 MORRIS A substitution out			
04:03	10 PAYNE R substitution in			
03:54				23 MOORE I 3pt FG , jump shot missed
03:52	10 PAYNE R defensive rebound (2)			
03:52	10 PAYNE R foul drawn (2)			5 CHAMBERS Y foul personal (2 - 5)
03:52	3 POINTER K substitution out			
03:52	21 WARE T substitution in			
03:52	10 PAYNE R free throw 1 - 2 missed			
03:52	offensive dead ball rebound (6)			
03:52	10 PAYNE R free throw 2 - 2 made (6)	<b>79-52</b>	<b>27</b>	
03:32	14 SHEMATSI S steal (1)			50 SMITH K turnover lost ball (2)
03:22	20 GUSTERS H 2pt FG from turnover in the paint, layup missed			





Official Basketball Play by Play - 4th Period  
**Vanderbilt at LSU**  
 01/16/22 Maravich Assembly Center, Baton Rouge  
 2021-22 Women's Basketball

**Game Time:** 12:00 PM  
**Game Duration:** 1:51  
**Attendance:** 6,853

**Officials:** Joseph Vaszily, Ashley Goode, Eric Koch

Game Time	LSU	Score	Diff	VAN
03:19				23 MOORE I defensive rebound (7)
03:13				12 WASHINGTON D 2pt FG outside the paint, jump shot missed
03:09	1 CHERRY J defensive rebound (9)			
02:58	14 SHEMATSI S 2pt FG in the paint, jump shot missed			
02:56				50 SMITH K defensive rebound (7)
02:27		<b>79-55</b>	<b>24</b>	21 LACHANCE B 3pt FG , jump shot made (3)
02:27				50 SMITH K assist (3)
02:07	14 SHEMATSI S 3pt FG , jump shot made (3)	<b>82-55</b>	<b>27</b>	
02:07	10 PAYNE R assist (2)			
01:44		<b>82-57</b>	<b>25</b>	50 SMITH K 2pt FG outside the paint, jump shot made (11)
01:44				21 LACHANCE B assist (2)
01:24	21 WARE T 3pt FG , jump shot missed			
01:22				defensive dead ball rebound (1)
01:22	1 CHERRY J substitution out			
01:22	23 BARTLETT A substitution in			
01:22				23 MOORE I substitution out
01:22				13 FLOURNOY D substitution in
01:22				50 SMITH K substitution out
01:22				35 WASHINGTON S substitution in
01:05		<b>82-59</b>	<b>23</b>	12 WASHINGTON D 2pt FG in the paint, jump shot made (3)
01:05	20 GUSTERS H foul shooting (2 - 4)			12 WASHINGTON D foul drawn (4)
01:05				12 WASHINGTON D free throw 1 - 1 missed
01:04				offensive rebound (33)
00:46				13 FLOURNOY D 3pt FG second chance, jump shot missed
00:42				12 WASHINGTON D offensive rebound (7)
00:41		<b>82-62</b>	<b>20</b>	21 LACHANCE B 3pt FG second chance, jump shot made (6)
00:41				12 WASHINGTON D assist (1)
00:20	14 SHEMATSI S 3pt FG , jump shot missed			
00:17				35 WASHINGTON S defensive rebound (2)
00:16		<b>82-64</b>	<b>18</b>	13 FLOURNOY D 2pt FG fast break in the paint, jump shot made (2)
<b>END OF GAME</b>				
<b>LSU 82-64 VAN</b>				



**Vanderbilt at LSU**

01/16/22 Maravich Assembly Center, Baton Rouge  
2021-22 Women's Basketball

Game Time: 12:00 PM  
Game Duration: 1:51  
Attendance: 6,853

Officials: Joseph Vasziy, Ashley Goode, Eric Koch

**Vanderbilt - 19**

NO.	Name	F	Min	FG			Rebounds			Fouls		TP	AS	TO	ST	Blocks		+/-
				M-A	M-A	M-A	OR	DR	TOT	PF	FD					BS	BA	
15	Brinae Alexander	F	03:14	3-5	1-2	0-0	1	0	1	1	1	7	0	0	0	0	0	-1
50	Kaylon Smith	F	08:38	1-3	0-0	0-0	1	1	2	0	1	2	1	1	0	0	1	-4
3	Jordyn Cambridge	G	00:00	0-0	0-0	0-0	0	0	0	0	0	0	0	0	0	0	0	
12	Demi Washington	G	06:46	1-3	0-0	0-1	1	0	1	0	1	2	1	0	0	0	0	4
21	Bella LaChance	G	07:59	2-5	2-4	0-0	0	0	0	0	0	6	1	0	0	0	0	2
23	Iyana Moore		08:38	0-3	0-3	0-0	0	3	3	1	1	0	1	1	2	0	0	-4
13	De'Mauri Flournoy		03:23	1-2	0-1	0-0	1	0	1	0	0	2	0	1	0	0	0	8
35	Sacha Washington		04:36	0-0	0-0	0-0	0	1	1	1	0	0	0	0	0	0	0	6
5	Yaubryon Chambers		06:46	0-0	0-0	0-0	1	0	1	2	0	0	0	1	0	0	0	4
Team							2	0	2			0		0				
<b>Totals</b>				8-21	3-10	0-1	7	5	12	5	4	19	4	4	2	0	1	3

Shooting By Period		
4 <sup>th</sup> FG%	8-21	38.1%
3PT%	3-10	30.0%
FT%	0-1	0%
GM FG%	8-21	38.1%
3PT%	3-10	30.0%
FT%	0-1	0.0%

Dead Ball Rebounds: 0, 1

Technical Fouls::NONE

**LSU - 16**

NO.	Name	F	Min	FG			Rebounds			Fouls		TP	AS	TO	ST	Blocks		+/-
				M-A	M-A	M-A	OR	DR	TOT	PF	FD					BS	BA	
32	Awa Trasi	F	04:54	0-1	0-0	1-2	0	1	1	1	1	1	0	0	0	0	0	4
24	Faustine Aifuwa	C	04:54	3-4	0-0	0-0	1	1	2	0	1	6	0	1	0	1	0	3
1	Jailin Cherry	G	08:38	1-1	0-0	1-2	0	1	1	1	1	3	2	1	0	0	0	4
3	Khayla Pointer	G	06:08	1-1	0-0	0-0	0	1	1	0	1	2	2	0	2	0	0	5
45	Alexis Morris	G	05:57	0-1	0-0	0-0	0	2	2	1	0	0	0	0	0	0	0	5
14	Sarah Shematsi		05:06	1-3	1-2	0-0	0	0	0	0	0	3	0	0	1	0	0	-7
20	Hannah Gusters		05:06	0-1	0-0	0-0	0	0	0	1	0	0	0	0	0	0	0	-6
10	Ryann Payne		04:03	0-0	0-0	1-2	0	1	1	0	1	1	1	0	0	0	0	-8
21	Timia Ware		03:52	0-1	0-1	0-0	0	0	0	0	0	0	0	0	0	0	0	-8
23	Amani Bartlett		01:22	0-0	0-0	0-0	0	0	0	0	0	0	0	0	0	0	0	-7
Team							0	0	0			0		0				
<b>Totals</b>				6-13	1-3	3-6	1	7	8	4	5	16	5	2	3	1	0	-3

Shooting By Period		
4 <sup>th</sup> FG%	6-13	46.2%
3PT%	1-3	33.3%
FT%	3-6	50%
GM FG%	6-13	46.2%
3PT%	1-3	33.3%
FT%	3-6	50.0%

Dead Ball Rebounds: 3, 0

Technical Fouls::NONE

	VAN	LSU
Biggest lead	0 (1 <sup>st</sup> 10:00)	27 (4 <sup>th</sup> 3:52)
Best Scoring Run	9(4 <sup>th</sup> 0:16)	7(4 <sup>th</sup> 3:52)
Lead Changes	0	
Times Tied	0	
Time with Lead	00:00	09:48

	VAN	LSU
Points from		
Turnovers	0	5
Paint	6	8
Second Chance	7	0
Fast Breaks	2	5
Bench	2	4

Period by Period Scoring					
	1st	2nd	3rd	4th	TOT
VAN	15	21	9	19	64
LSU	21	22	23	16	82



**Vanderbilt at LSU**

01/16/22 Maravich Assembly Center, Baton Rouge  
2021-22 Women's Basketball

Game Time: 12:00 PM  
Game Duration: 1:51  
Attendance: 6,853

Officials: Joseph Vaszily, Ashley Goode, Eric Koch

**Vanderbilt - 28**

NO.	Name	Min	FG			Rebounds			Fouls		TP	AS	TO	ST	Blocks		+/-
			M-A	M-A	M-A	OR	DR	TOT	PF	FD					BS	BA	
15	Brinae Alexander	F 11:36	4-11	1-4	0-0	1	0	1	3	1	9	1	0	2	0	0	-11
50	Kaylon Smith	F 17:35	2-8	0-1	0-0	1	2	3	0	1	4	1	1	0	0	1	-18
3	Jordyn Cambridge	G 07:32	1-2	0-0	0-1	1	0	1	0	1	2	0	1	1	0	1	-7
12	Demi Washington	G 16:46	1-5	0-0	1-3	3	1	4	0	4	3	1	0	0	0	1	-10
21	Bella LaChance	G 10:27	2-5	2-4	0-0	0	0	0	0	0	6	1	1	0	0	0	-5
13	De'Mauri Flournoy	05:20	1-3	0-2	0-0	1	0	1	0	0	2	0	1	0	0	0	6
23	Iyana Moore	16:41	1-7	0-4	0-0	0	3	3	1	1	2	2	2	3	0	0	-16
35	Sacha Washington	05:39	0-0	0-0	0-0	0	1	1	3	0	0	0	0	0	0	0	6
5	Yaubryon Chambers	08:24	0-0	0-0	0-0	1	0	1	2	0	0	0	1	0	0	0	0
Team						3	0	3			0		0				
<b>Totals</b>			12-41	3-15	1-4	11	7	18	9	8	28	6	7	6	0	3	-11

Shooting By Period		
3 <sup>rd</sup> FG%	4-20	20.0%
3PT%	0-5	0.0%
FT%	1-3	33.3%
4 <sup>th</sup> FG%	8-21	38.1%
3PT%	3-10	30.0%
FT%	0-1	0%
GM FG%	12-41	29.3%
3PT%	3-15	20.0%
FT%	1-4	25.0%

Dead Ball Rebounds: 0, 1

Technical Fouls::NONE

**LSU - 39**

NO.	Name	Min	FG			Rebounds			Fouls		TP	AS	TO	ST	Blocks		+/-
			M-A	M-A	M-A	OR	DR	TOT	PF	FD					BS	BA	
32	Awa Trasi	F 14:54	1-3	0-0	2-4	1	3	4	1	2	4	1	0	0	1	0	18
24	Faustine Aifuwa	C 11:02	5-7	0-0	0-0	2	2	4	1	1	10	0	1	0	1	0	17
1	Jailin Cherry	G 18:38	3-4	0-0	1-2	0	5	5	1	1	7	3	1	1	0	0	18
3	Khayla Pointer	G 16:08	5-5	0-0	2-2	0	4	4	0	4	12	4	2	3	1	0	19
45	Alexis Morris	G 15:57	1-3	0-1	0-0	0	4	4	3	0	2	0	3	1	0	0	19
20	Hannah Gusters	06:30	0-1	0-0	0-0	0	0	0	2	0	0	0	0	0	0	0	-12
14	Sarah Shematsi	07:34	1-3	1-2	0-0	0	1	1	0	0	3	0	1	1	0	0	-1
10	Ryann Payne	04:03	0-0	0-0	1-2	0	1	1	0	1	1	1	0	0	0	0	-8
21	Timia Ware	03:52	0-1	0-1	0-0	0	0	0	0	0	0	0	0	0	0	0	-8
23	Amani Bartlett	01:22	0-0	0-0	0-0	0	0	0	0	0	0	0	0	0	0	0	-7
Team						0	1	1			0		0				
<b>Totals</b>			16-27	1-4	6-10	3	21	24	8	9	39	9	8	6	3	0	11

Shooting By Period		
3 <sup>rd</sup> FG%	10-14	71.4%
3PT%	0-1	0.0%
FT%	3-4	75%
4 <sup>th</sup> FG%	6-13	46.2%
3PT%	1-3	33.3%
FT%	3-6	50%
GM FG%	16-27	59.3%
3PT%	1-4	25.0%
FT%	6-10	60.0%

Dead Ball Rebounds: 4, 0

Technical Fouls::NONE

	VAN	LSU
Biggest lead	0 (1 <sup>st</sup> 10:00)	27 (4 <sup>th</sup> 3:52)
Best Scoring Run	9(4 <sup>th</sup> 0:16)	9(4 <sup>th</sup> 9:00)
Lead Changes	0	
Times Tied	0	
Time with Lead	00:00	19:40

	VAN	LSU
Points from		
Turnovers	6	11
Paint	12	26
Second Chance	8	4
Fast Breaks	6	15
Bench	4	4

Period by Period Scoring					
	1st	2nd	3rd	4th	TOT
VAN	15	21	9	19	64
LSU	21	22	23	16	82



**Vanderbilt at LSU**

01/16/22 Maravich Assembly Center, Baton Rouge  
2021-22 Women's Basketball

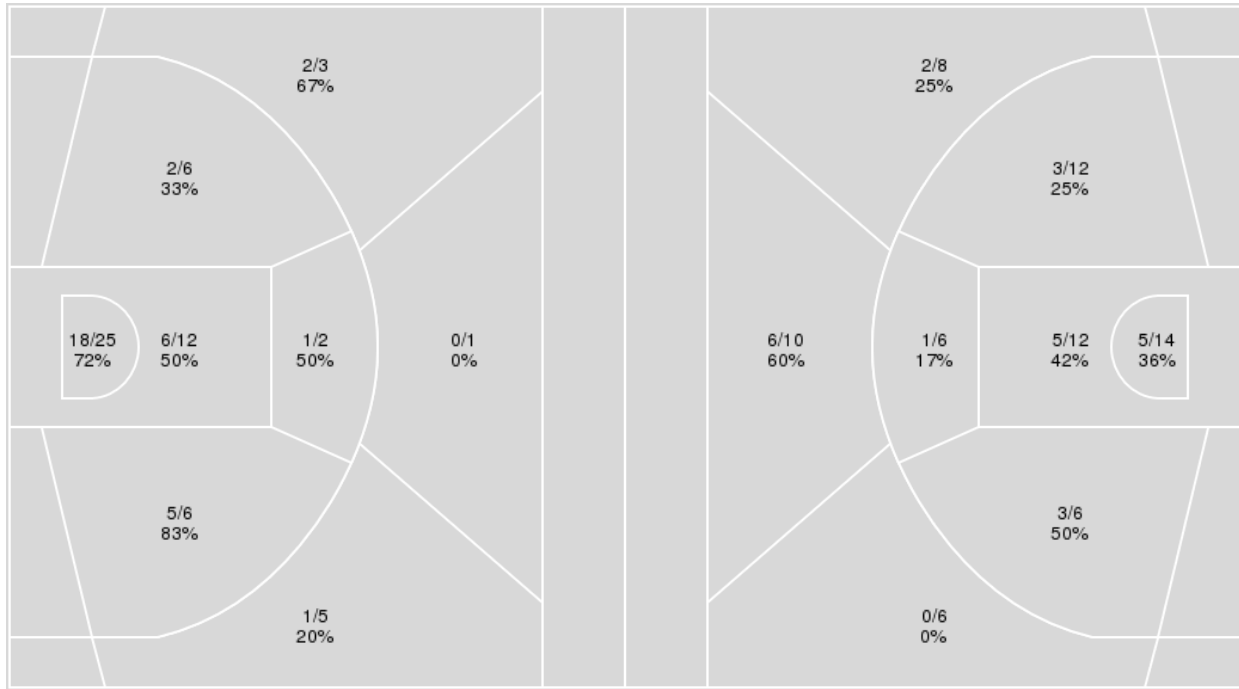
Officials: Joseph Vaszily, Ashley Goode, Eric Koch

{ Players => 0, 1, 3, 10, 11, 13, 14, 15, 20, 21, 23, 24, 30, 32, 45; } FG Types => All; Results => All;

{ Players => 3, 5, 11, 12, 13, 14, 15, 21, 22, 23, 33, 35, 50; } FG Types => All; Results => All;

**LSU**

**Vanderbilt**



LSU	M/A	%
Field Goals	35/60	58
2 Points	32/51	63
3 Points	3/9	33
Free Throws	9/17	53

Vanderbilt	M/A	%
Field Goals	25/74	34
2 Points	17/50	34
3 Points	8/24	33
Free Throws	6/9	67



**Vanderbilt at LSU**

01/16/22 Maravich Assembly Center, Baton Rouge  
2021-22 Women's Basketball

Game Time: 12:00 PM  
Game Duration: 1:51  
Attendance: 6,853

Officials: Joseph Vaszily, Ashley Goode, Eric Koch

**Vanderbilt**

No	Name	Mins		Score		Points Diff		Points per Min		Assists		Rebounds		Steals		Turnovers	
		On	Off	On	Off	On	Off	On	Off	On	Off	On	Off	On	Off	On	Off
3	Jordyn Cambridge	20:14	19:46	31 - 44	33 - 38	-13	-5	1.53	1.67	6	6	15	20	6	4	8	7
5	Yaubryon Chambers	14:01	25:59	22 - 27	42 - 55	-5	-13	1.57	1.62	4	8	13	22	1	9	4	11
12	Demi Washington	32:36	07:24	50 - 62	14 - 20	-12	-6	1.53	1.89	10	2	29	6	9	1	11	4
13	De'Mauri Flournoy	08:03	31:57	16 - 15	48 - 67	1	-19	1.99	1.50	2	10	9	26	2	8	3	12
15	Brinae Alexander	28:20	11:40	45 - 64	19 - 18	-19	1	1.59	1.63	8	4	23	12	9	1	12	3
21	Bella LaChance	18:29	21:31	32 - 33	32 - 49	-1	-17	1.73	1.49	6	6	17	18	4	6	4	11
23	Iyana Moore	33:14	06:46	49 - 72	15 - 10	-23	5	1.47	2.22	10	2	29	6	8	2	15	0
35	Sacha Washington	11:21	28:39	28 - 26	36 - 56	2	-20	2.47	1.26	4	8	10	25	1	9	4	11
50	Kaylon Smith	33:42	06:18	47 - 67	17 - 15	-20	2	1.39	2.70	10	2	30	5	10	0	14	1

**LSU**

No	Name	Mins		Score		Points Diff		Points per Min		Assists		Rebounds		Steals		Turnovers	
		On	Off	On	Off	On	Off	On	Off	On	Off	On	Off	On	Off	On	Off
1	Jailin Cherry	38:38	01:22	82 - 57	0 - 7	25	-7	2.12	0.00	23	0	43	0	10	0	15	0
3	Khayla Pointer	32:28	07:32	72 - 43	10 - 21	29	-11	2.22	1.33	21	2	39	4	9	1	14	1
10	Ryann Payne	14:04	25:56	26 - 33	56 - 31	-7	25	1.85	2.16	9	14	11	32	2	8	3	12
14	Sarah Shematsi	09:29	30:31	16 - 15	66 - 49	1	17	1.69	2.16	4	19	10	33	4	6	4	11
20	Hannah Gusters	13:57	26:03	19 - 36	63 - 28	-17	35	1.36	2.42	6	17	11	32	3	7	6	9
21	Timia Ware	04:16	35:44	4 - 14	78 - 50	-10	28	0.94	2.18	1	22	1	42	1	9	0	15
23	Amani Bartlett	02:49	37:11	4 - 10	78 - 54	-6	24	1.42	2.10	1	22	2	41	0	10	0	15
24	Faustine Aifuwa	29:00	11:00	66 - 41	16 - 23	25	-7	2.28	1.45	19	4	32	11	6	4	8	7
32	Awa Trasi	22:29	17:31	50 - 26	32 - 38	24	-6	2.22	1.83	12	11	27	16	6	4	11	4
45	Alexis Morris	32:50	07:10	71 - 45	11 - 19	26	-8	2.16	1.53	19	4	39	4	9	1	14	1

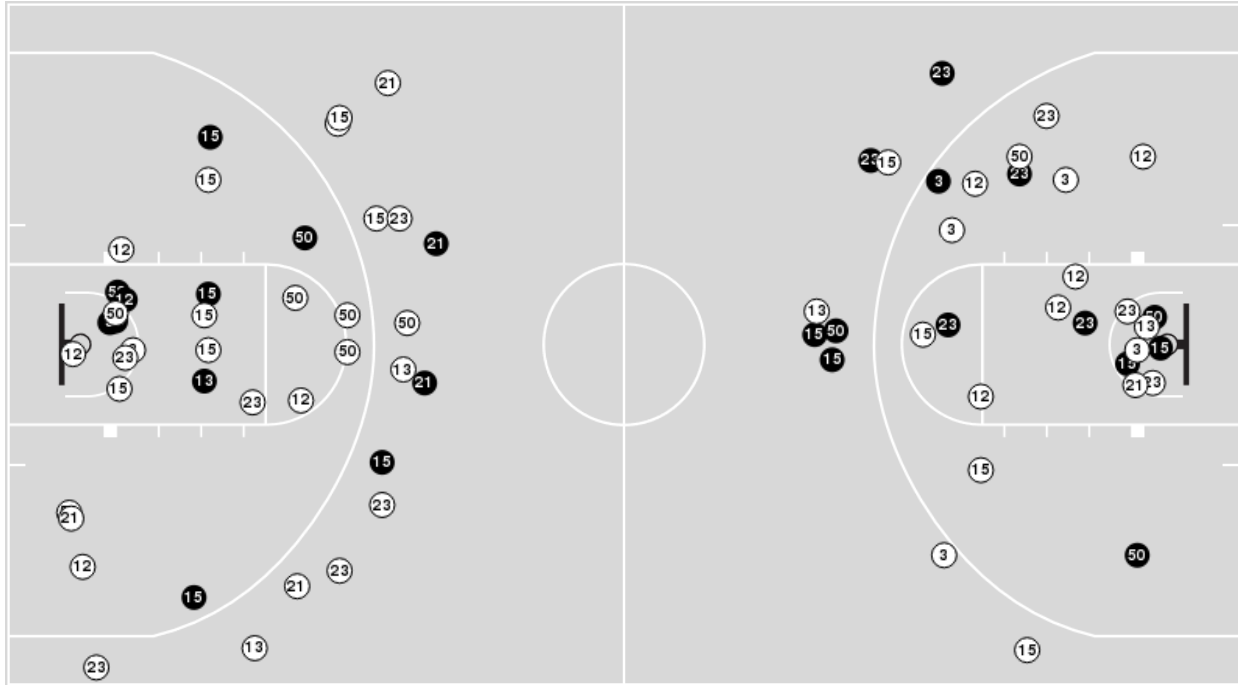


**Officials:** Joseph Vaszily, Ashley Goode, Eric Koch

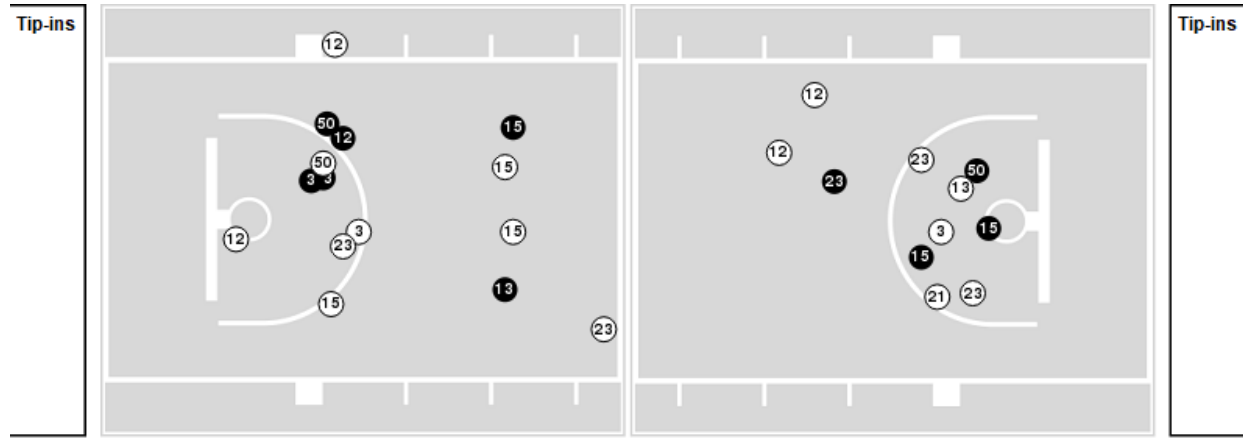
Players => 3, 5, 11, 12, 13, 14, 15, 21, 22, 23, 33, 35, 50FG Types=>AllResults=>All

**Vanderbilt**

**All Field Goals**



**Blow Up Chart**



● Made    ○ Missed    N - Player Number

Vanderbilt	M/A	%
Field Goals	25/74	34
2 Points	17/50	34
3 Points	8/24	33
Free Throws	6/9	67

Vanderbilt	M/A	%
Points in the Paint	20 (10 / 26)	38
Fast Break Points	13 (8/9)	89
Second Chance Points	19 (8/15)	53
Effective FG%	39	



**Vanderbilt at LSU**

01/16/22 Maravich Assembly Center, Baton Rouge  
2021-22 Women's Basketball

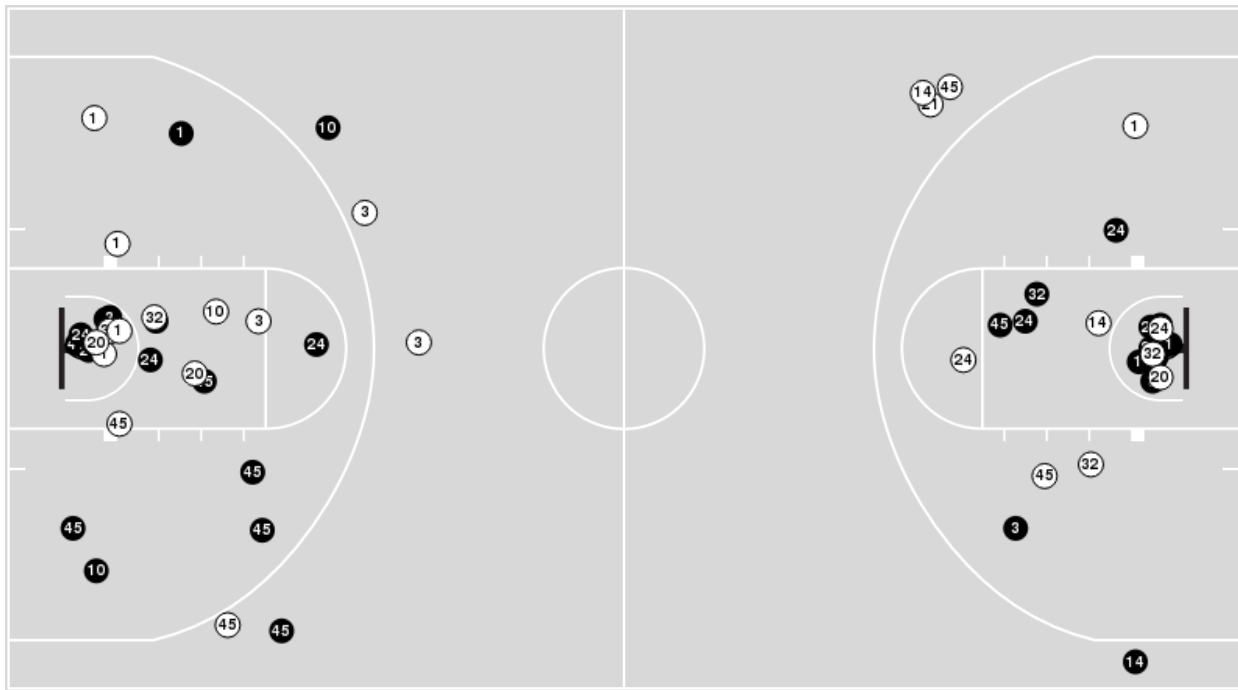
Game Time: 12:00 PM  
Game Duration: 1:51  
Attendance: 6,853

Officials: Joseph Vaszily, Ashley Goode, Eric Koch

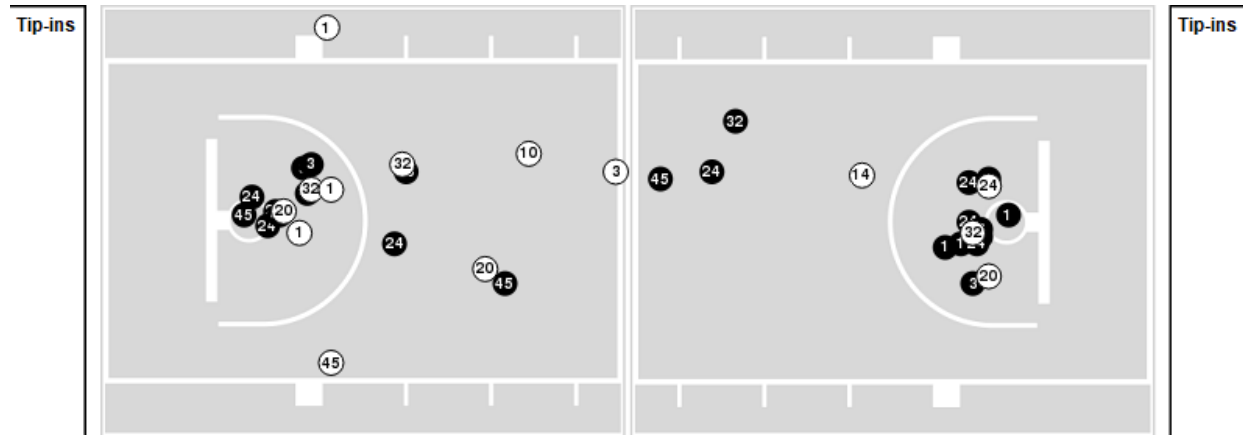
Players => 0, 1, 3, 10, 11, 13, 14, 15, 20, 21, 23, 24, 30, 32, 45 FG Types=>All Results=>All

**LSU**

**All Field Goals**



**Blow Up Chart**



● Made ○ Missed N - Player Number

LSU	M/A	%
Field Goals	35/60	58
2 Points	32/51	63
3 Points	3/9	33
Free Throws	9/17	53

LSU	M/A	%
Points in the Paint	48 (24 / 37)	65
Fast Break Points	27 (14/16)	88
Second Chance Points	14 (7/8)	88
Effective FG%	61	



**Vanderbilt**

Lineup	Quarter On	Time On	Quarter Off	Time Off	Time on Court	Score	Score Diff	Reb	Stl	Tov	Ass	PPP
3- Cambridge J/ 12- Washington D/ 15- Alexander B/ 21- LaChance B/ 50- Smith K/	1	10:00	1	08:17	01:43	4-4	0	1	1	0	1	1.3333
3- Cambridge J/ 12- Washington D/ 15- Alexander B/ 23- Moore I/ 50- Smith K/	1	08:17	1	02:29	05:48	8-11	-3	7	1	6	1	0.6993
3- Cambridge J/ 15- Alexander B/ 23- Moore I/ 35- Washington S/ 50- Smith K/	1	02:29	1	02:01	00:28	0-2	-2	1	0	1	0	0.0000
3- Cambridge J/ 12- Washington D/ 15- Alexander B/ 23- Moore I/ 50- Smith K/	1	02:01	1	00:25	01:36	3-4	-1	0	1	0	1	1.0000
3- Cambridge J/ 5- Chambers Y/ 13- Flournoy D/ 15- Alexander B/ 50- Smith K/	1	00:25	2	08:41	01:44	2-2	0	1	0	0	0	1.0638
3- Cambridge J/ 5- Chambers Y/ 15- Alexander B/ 23- Moore I/ 35- Washington S/	2	08:41	2	07:18	01:23	5-5	0	0	0	0	1	2.5000
5- Chambers Y/ 13- Flournoy D/ 15- Alexander B/ 23- Moore I/ 35- Washington S/	2	07:18	2	06:43	00:35	0-3	-3	1	0	1	0	0.0000
12- Washington D/ 13- Flournoy D/ 15- Alexander B/ 23- Moore I/ 50- Smith K/	2	06:43	2	06:19	00:24	0-2	-2	0	0	0	0	0.0000
12- Washington D/ 15- Alexander B/ 21- LaChance B/ 23- Moore I/ 50- Smith K/	2	06:19	2	03:16	03:03	7-4	3	4	1	0	1	1.1905
12- Washington D/ 21- LaChance B/ 23- Moore I/ 35- Washington S/ 50- Smith K/	2	03:16	2	01:55	01:21	4-1	3	1	0	0	1	2.0000
5- Chambers Y/ 12- Washington D/ 21- LaChance B/ 23- Moore I/ 35- Washington S/	2	01:55	3	10:00	01:55	3-5	-2	1	0	0	0	0.7500
3- Cambridge J/ 12- Washington D/ 15- Alexander B/ 23- Moore I/ 50- Smith K/	3	10:00	3	05:28	04:32	5-10	-5	4	2	1	2	0.6345
3- Cambridge J/ 12- Washington D/ 13- Flournoy D/ 15- Alexander B/ 50- Smith K/	3	05:28	3	03:31	01:57	2-4	-2	1	1	0	0	0.3676
3- Cambridge J/ 12- Washington D/ 15- Alexander B/ 23- Moore I/ 35- Washington S/	3	03:31	3	02:28	01:03	2-2	0	0	0	0	0	2.0000
12- Washington D/ 15- Alexander B/ 21- LaChance B/ 23- Moore I/ 50- Smith K/	3	02:28	3	01:38	00:50	0-3	-3	0	1	1	0	0.0000
5- Chambers Y/ 12- Washington D/ 21- LaChance B/ 23- Moore I/ 50- Smith K/	3	01:38	4	08:20	03:18	0-6	-6	5	0	1	0	0.0000
13- Flournoy D/ 15- Alexander B/ 23- Moore I/ 35- Washington S/ 50- Smith K/	4	08:20	4	06:19	02:01	5-4	1	3	1	2	1	1.2500
15- Alexander B/ 21- LaChance B/ 23- Moore I/ 35- Washington S/ 50- Smith K/	4	06:19	4	05:06	01:13	2-4	-2	0	0	0	0	0.6667
5- Chambers Y/ 12- Washington D/ 21- LaChance B/ 23- Moore I/ 50- Smith K/	4	05:06	4	01:22	03:44	5-6	-1	2	1	2	2	0.7143
5- Chambers Y/ 12- Washington D/ 13- Flournoy D/ 21- LaChance B/ 50- Smith K/	4	01:22	4	01:22	00:00	0-0	0	0	0	0	0	0.0000
5- Chambers Y/ 12- Washington D/ 13- Flournoy D/ 21- LaChance B/ 35- Washington S/	4	01:22	4	00:00	01:22	7-0	7	3	0	0	1	2.8689





**Officials:** Joseph Vasziy, Ashley Goode, Eric Koch

**LSU**

Lineup	Quarter On	Time On	Quarter Off	Time Off	Time on Court	Score	Score Diff	Reb	Stl	Tov	Ass	PPP
1- Cherry J/ 3- Pointer K/ 24- Aifuwa F/ 32- Trasi A/ 45- Morris A/	1	10:00	1	05:25	04:35	10-7	3	3	2	2	2	1.1111
1- Cherry J/ 3- Pointer K/ 20- Gusters H/ 24- Aifuwa F/ 45- Morris A/	1	05:25	1	02:29	02:56	5-5	0	4	1	1	2	1.0246
1- Cherry J/ 3- Pointer K/ 24- Aifuwa F/ 32- Trasi A/ 45- Morris A/	1	02:29	1	00:25	02:04	6-3	3	3	0	1	2	1.2000
1- Cherry J/ 3- Pointer K/ 10- Payne R/ 24- Aifuwa F/ 32- Trasi A/	1	00:25	2	09:29	00:56	0-0	0	0	0	1	0	0.0000
1- Cherry J/ 3- Pointer K/ 10- Payne R/ 20- Gusters H/ 24- Aifuwa F/	2	09:29	2	07:18	02:11	7-7	0	2	0	0	3	2.3333
1- Cherry J/ 3- Pointer K/ 10- Payne R/ 24- Aifuwa F/ 45- Morris A/	2	07:18	2	04:15	03:03	9-5	4	3	1	0	4	1.3975
1- Cherry J/ 3- Pointer K/ 10- Payne R/ 20- Gusters H/ 45- Morris A/	2	04:15	2	03:40	00:35	0-0	0	1	0	1	0	0.0000
1- Cherry J/ 10- Payne R/ 20- Gusters H/ 21- Ware T/ 45- Morris A/	2	03:40	2	03:40	00:00	0-2	-2	0	0	0	0	0.0000
1- Cherry J/ 20- Gusters H/ 21- Ware T/ 24- Aifuwa F/ 45- Morris A/	2	03:40	2	03:16	00:24	0-0	0	0	0	0	0	0.0000
1- Cherry J/ 10- Payne R/ 20- Gusters H/ 24- Aifuwa F/ 45- Morris A/	2	03:16	2	01:55	01:21	1-4	-3	0	0	0	0	0.5319
1- Cherry J/ 10- Payne R/ 14- Shematsi S/ 24- Aifuwa F/ 45- Morris A/	2	01:55	2	01:27	00:28	1-0	1	1	0	1	0	0.5319
1- Cherry J/ 10- Payne R/ 14- Shematsi S/ 23- Bartlett A/ 45- Morris A/	2	01:27	3	10:00	01:27	4-3	1	2	0	0	1	2.0000
1- Cherry J/ 3- Pointer K/ 24- Aifuwa F/ 32- Trasi A/ 45- Morris A/	3	10:00	3	06:47	03:13	10-1	9	6	1	0	1	2.0000
1- Cherry J/ 3- Pointer K/ 20- Gusters H/ 32- Trasi A/ 45- Morris A/	3	06:47	3	05:23	01:24	0-6	-6	1	0	3	0	0.0000
1- Cherry J/ 3- Pointer K/ 24- Aifuwa F/ 32- Trasi A/ 45- Morris A/	3	05:23	3	02:28	02:55	7-2	5	5	0	1	1	1.1905
1- Cherry J/ 3- Pointer K/ 14- Shematsi S/ 32- Trasi A/ 45- Morris A/	3	02:28	4	10:00	02:28	6-0	6	4	2	2	2	1.0204
1- Cherry J/ 3- Pointer K/ 24- Aifuwa F/ 32- Trasi A/ 45- Morris A/	4	10:00	4	05:06	04:54	10-7	3	5	1	1	4	1.2500
1- Cherry J/ 3- Pointer K/ 20- Gusters H/ 32- Trasi A/ 45- Morris A/	4	05:06	4	05:06	00:00	1-0	1	0	0	0	0	1.1364
1- Cherry J/ 3- Pointer K/ 14- Shematsi S/ 20- Gusters H/ 45- Morris A/	4	05:06	4	04:03	01:03	1-0	1	1	1	1	0	0.5319
1- Cherry J/ 3- Pointer K/ 10- Payne R/ 14- Shematsi S/ 20- Gusters H/	4	04:03	4	03:52	00:11	0-0	0	1	0	0	0	0.0000
1- Cherry J/ 10- Payne R/ 14- Shematsi S/ 20- Gusters H/ 21- Ware T/	4	03:52	4	01:22	02:30	4-5	-1	1	1	0	1	0.8197
10- Payne R/ 14- Shematsi S/ 20- Gusters H/ 21- Ware T/ 23- Bartlett A/	4	01:22	4	00:00	01:22	0-7	-7	0	0	0	0	0.0000



**Vanderbilt at LSU**

01/16/22 Maravich Assembly Center, Baton Rouge  
2021-22 Women's Basketball

Game Time: 12:00 PM

Game Duration: 1:51

Attendance: 6,853

Officials: Joseph Vaszily, Ashley Goode, Eric Koch

**Vanderbilt**

Lineup	Time	Score	Score Diff	Pts/Min	Reb	Stl	Tov	Ass	PPP
3- Cambridge J/ 12- Washington D/ 15- Alexander B/ 23- Moore I/ 50- Smith K/	11:56	16-25	-9	1.3408	11	4	7	4	0.7168
5- Chambers Y/ 12- Washington D/ 21- LaChance B/ 23- Moore I/ 50- Smith K/	07:02	5-12	-7	0.7109	7	1	3	2	0.4167
12- Washington D/ 15- Alexander B/ 21- LaChance B/ 23- Moore I/ 50- Smith K/	03:53	7-7	0	1.8026	4	2	1	1	0.7883
13- Flournoy D/ 15- Alexander B/ 23- Moore I/ 35- Washington S/ 50- Smith K/	02:01	5-4	1	2.4793	3	1	2	1	1.2500
3- Cambridge J/ 12- Washington D/ 13- Flournoy D/ 15- Alexander B/ 50- Smith K/	01:57	2-4	-2	1.0256	1	1	0	0	0.3676
5- Chambers Y/ 12- Washington D/ 21- LaChance B/ 23- Moore I/ 35- Washington S/	01:55	3-5	-2	1.5652	1	0	0	0	0.7500
3- Cambridge J/ 5- Chambers Y/ 13- Flournoy D/ 15- Alexander B/ 50- Smith K/	01:44	2-2	0	1.1538	1	0	0	0	1.0638
3- Cambridge J/ 12- Washington D/ 15- Alexander B/ 21- LaChance B/ 50- Smith K/	01:43	4-4	0	2.3301	1	1	0	1	1.3333
3- Cambridge J/ 5- Chambers Y/ 15- Alexander B/ 23- Moore I/ 35- Washington S/	01:23	5-5	0	3.6145	0	0	0	1	2.5000
5- Chambers Y/ 12- Washington D/ 13- Flournoy D/ 21- LaChance B/ 35- Washington S/	01:22	7-0	7	5.1220	3	0	0	1	2.8689
12- Washington D/ 21- LaChance B/ 23- Moore I/ 35- Washington S/ 50- Smith K/	01:21	4-1	3	2.9630	1	0	0	1	2.0000
15- Alexander B/ 21- LaChance B/ 23- Moore I/ 35- Washington S/ 50- Smith K/	01:13	2-4	-2	1.6438	0	0	0	0	0.6667
3- Cambridge J/ 12- Washington D/ 15- Alexander B/ 23- Moore I/ 35- Washington S/	01:03	2-2	0	1.9048	0	0	0	0	2.0000
5- Chambers Y/ 13- Flournoy D/ 15- Alexander B/ 23- Moore I/ 35- Washington S/	00:35	0-3	-3	0.0000	1	0	1	0	0.0000
3- Cambridge J/ 15- Alexander B/ 23- Moore I/ 35- Washington S/ 50- Smith K/	00:28	0-2	-2	0.0000	1	0	1	0	0.0000
12- Washington D/ 13- Flournoy D/ 15- Alexander B/ 23- Moore I/ 50- Smith K/	00:24	0-2	-2	0.0000	0	0	0	0	0.0000
5- Chambers Y/ 12- Washington D/ 13- Flournoy D/ 21- LaChance B/ 50- Smith K/	00:00	0-0	0	NaN	0	0	0	0	0.0000



Official Basketball Line Up Analysis - Final  
**Vanderbilt at LSU**  
 01/16/22 Maravich Assembly Center, Baton Rouge  
 2021-22 Women's Basketball

**Game Time:** 12:00 PM  
**Game Duration:** 1:51  
**Attendance:** 6,853

**Officials:** Joseph Vaszily, Ashley Goode, Eric Koch

**LSU**

Lineup	Time	Score	Score Diff	Pts/Min	Reb	Stl	Tov	Ass	PPP
1- Cherry J/ 3- Pointer K/ 24- Aifuwa F/ 32- Trasi A/ 45- Morris A/	17:41	43-20	23	2.4317	22	4	5	10	1.3078
1- Cherry J/ 3- Pointer K/ 10- Payne R/ 24- Aifuwa F/ 45- Morris A/	03:03	9-5	4	2.9508	3	1	0	4	1.3975
1- Cherry J/ 3- Pointer K/ 20- Gusters H/ 24- Aifuwa F/ 45- Morris A/	02:56	5-5	0	1.7045	4	1	1	2	1.0246
1- Cherry J/ 10- Payne R/ 14- Shematsi S/ 20- Gusters H/ 21- Ware T/	02:30	4-5	-1	1.6000	1	1	0	1	0.8197
1- Cherry J/ 3- Pointer K/ 14- Shematsi S/ 32- Trasi A/ 45- Morris A/	02:28	6-0	6	2.4324	4	2	2	2	1.0204
1- Cherry J/ 3- Pointer K/ 10- Payne R/ 20- Gusters H/ 24- Aifuwa F/	02:11	7-7	0	3.2061	2	0	0	3	2.3333
1- Cherry J/ 10- Payne R/ 14- Shematsi S/ 23- Bartlett A/ 45- Morris A/	01:27	4-3	1	2.7586	2	0	0	1	2.0000
1- Cherry J/ 3- Pointer K/ 20- Gusters H/ 32- Trasi A/ 45- Morris A/	01:24	1-6	-5	0.7143	1	0	3	0	0.2577
10- Payne R/ 14- Shematsi S/ 20- Gusters H/ 21- Ware T/ 23- Bartlett A/	01:22	0-7	-7	0.0000	0	0	0	0	0.0000
1- Cherry J/ 10- Payne R/ 20- Gusters H/ 24- Aifuwa F/ 45- Morris A/	01:21	1-4	-3	0.7407	0	0	0	0	0.5319
1- Cherry J/ 3- Pointer K/ 14- Shematsi S/ 20- Gusters H/ 45- Morris A/	01:03	1-0	1	0.9524	1	1	1	0	0.5319
1- Cherry J/ 3- Pointer K/ 10- Payne R/ 24- Aifuwa F/ 32- Trasi A/	00:56	0-0	0	0.0000	0	0	1	0	0.0000
1- Cherry J/ 3- Pointer K/ 10- Payne R/ 20- Gusters H/ 45- Morris A/	00:35	0-0	0	0.0000	1	0	1	0	0.0000
1- Cherry J/ 10- Payne R/ 14- Shematsi S/ 24- Aifuwa F/ 45- Morris A/	00:28	1-0	1	2.1429	1	0	1	0	0.5319
1- Cherry J/ 20- Gusters H/ 21- Ware T/ 24- Aifuwa F/ 45- Morris A/	00:24	0-0	0	0.0000	0	0	0	0	0.0000
1- Cherry J/ 3- Pointer K/ 10- Payne R/ 14- Shematsi S/ 20- Gusters H/	00:11	0-0	0	0.0000	1	0	0	0	0.0000
1- Cherry J/ 10- Payne R/ 20- Gusters H/ 21- Ware T/ 45- Morris A/	00:00	0-2	-2	NaN	0	0	0	0	0.0000