

# VANDERBILT

## BASKETBALL

### 2020-21 Schedule/Results

#### November (0-0)

|      |         |                           |       |          |
|------|---------|---------------------------|-------|----------|
| Wed. | Nov. 25 | Tennessee Tech            | ..... | Canceled |
| Sun. | Nov. 29 | at Middle Tennessee State | ..... | Canceled |

#### December (3-1)

|      |         |                      |       |              |
|------|---------|----------------------|-------|--------------|
| Wed. | Dec. 2  | Texas Tech           | ..... | Canceled     |
| Sat. | Dec. 5  | at Little Rock       | ..... | L, 74-82     |
| Tue. | Dec. 8  | East Tennessee State | ..... | W, 81-61     |
| Sun. | Dec. 13 | at Chattanooga       | ..... | W, 80-78     |
| Thu. | Dec. 17 | VCU                  | ..... | W, 90-81     |
| Sun. | Dec. 20 | Gardner-Webb         | ..... | 2 p.m./SECN+ |
| Mon. | Dec. 28 | Samford              | ..... | 7 p.m./SECN+ |

#### January (0-0)

|      |         |                      |       |              |
|------|---------|----------------------|-------|--------------|
| Thu. | Dec. 31 | Florida              | ..... | 3 p.m./SECN+ |
| Sun. | Jan. 3  | at Mississippi State | ..... | 2 p.m./SECN  |
| Thu. | Jan. 7  | at Missouri          | ..... | 7 p.m./SECN+ |
| Sun. | Jan. 10 | Alabama              | ..... | 2 p.m./SECN  |
| Thu. | Jan. 14 | South Carolina       | ..... | 7 p.m./SECN+ |
| Sun. | Jan. 17 | at Kentucky          | ..... | 4 p.m./SECN  |
| Sun. | Jan. 24 | Tennessee            | ..... | 2 p.m./SECN  |
| Thu. | Jan. 28 | at Arkansas          | ..... | 7 p.m./SECN+ |

#### February (0-0)

|      |         |                   |       |              |
|------|---------|-------------------|-------|--------------|
| Mon. | Feb. 1  | Mississippi State | ..... | 6 p.m./SECN  |
| Thu. | Feb. 4  | at Florida        | ..... | 5 p.m./SECN+ |
| Thu. | Feb. 11 | at Texas A&M      | ..... | 7 p.m./SECN+ |
| Sun. | Feb. 14 | at Tennessee      | ..... | 1 p.m./SECN  |
| Thu. | Feb. 18 | Georgia           | ..... | 7 p.m./SECN+ |
| Sun. | Feb. 21 | at Auburn         | ..... | 2 p.m./SECN+ |
| Thu. | Feb. 25 | at Ole Miss       | ..... | 6 p.m./SECN+ |
| Sun. | Feb. 28 | LSU               | ..... | 5 p.m./SECN  |

#### March (0-0)

|      |         |                  |       |     |
|------|---------|------------------|-------|-----|
| Sun. | March 1 | SEC Tournament** | ..... | TBA |
|------|---------|------------------|-------|-----|

\*SEC contest

\*\*SEC Tournament (Greenville, S.C.)

All times CT

### Follow the Commodores

Twitter/Instagram: @VandyWBB

Facebook: VandyHoops

In-Game Notes: @VandyNotes

Web: VUCommodores.com

### SID Contact

SID: Eric Dolan (@ejdolan)

Cell: 585-260-8322

Email: eric.j.dolan@vanderbilt.edu

Address: 2601 Jess Nealy Dr., Nashville, TN, 37212



### Vanderbilt Commodores (3-1, 0-0 SEC) vs. Gardner-Webb Runnin' Bulldogs (1-5, 1-1 Big South)

Dec. 20, 2020 • 2 p.m. • Memorial Gym (14,326) • Nashville, Tenn.

TV/Web: SEC Network+

Radio/TuneIn: WNSR 560 AM/95.9 FM (Charlie Mattos)

#### Home For The Holidays

★ Sunday's game marks the first all-time meeting between Vanderbilt and Gardner-Webb.

#### Looking Astern

★ Posting its best shooting day of the season, Vanderbilt shot 52.3 percent from the floor Thursday afternoon against VCU in a 90-81 victory over the Rams.

★ Koi Love picked up right where she left off the previous game, scoring 29 points on 12-of-15 shooting. While she didn't get a fourth-straight double-double, the 29 points mark a career high for the sophomore.

★ Brinae Alexander also added a big 20 points while Brylee Bartram came alive with 18 points, all of which came on six three-pointers throughout the day. Chelsie Hall had a stellar all-around afternoon and flirted with a triple-double, finishing with 11 points, nine assists and seven rebounds.

#### A Vandy Win Would...

... be the fourth straight overall.

... be the 857th win in program history.

... make the Commodores 12-1 at home against unranked opponents since the start of last season.

... be the first over Gardner-Webb in the first-ever meeting.

... be the fifth win in a row over a team from the state of North Carolina that is not current No. 4 NC State.

#### A Vandy Loss Would...

... be the first at home against an unranked nonconference opponent in the last eight games.

... be less good than a win.

#### On Deck

★ The Commodores will wrap up the nonconference season with one more home game after the Christmas holiday against Samford on Dec. 28.

★ After meeting Samford, the Commodores will open the home slate when they host Florida on New Years Eve at 3 p.m.

★ After that, the Commodores will hit the road for two in a row at Mississippi State (Jan. 3) and Missouri (Jan. 7).

### Projected Lineup

#### Starters

| No. | Name              | Ht.  | Yr. | Pos. | Notes/Stats  |
|-----|-------------------|------|-----|------|--|
| 1   | Enna Pehadzic     | 5-9  | 5th | G    | Grad transfer (South Florida); 2018-19 all-conference    |
| 2   | Chelsie Hall      | 5-7  | Sr. | G    | Needs 22 points to reach 1,000 career milestone          |
| 5   | Yaubryon Chambers | 6-1  | So. | F    | Murfreesboro native, first career start in season opener |
| 15  | Brinae Alexander  | 5-10 | Jr. | F    | Opener was first game in 373 days                        |
| 23  | Koi Love          | 6-0  | So. | F    | Averaging a double-double with 23.3 ppg and 10.5 rpg     |

#### Off the Bench

|    |                |     |     |   |  |
|----|----------------|-----|-----|---|--|
| 0  | Bella LaChance | 5-6 | Fr. | G | Finished high school career with 1,850 career points     |
| 22 | Brylee Bartram | 5-8 | So. | G | Transfer from Florida, granted NCAA waiver on Dec. 4     |
| 44 | Emily Bowman   | 6-6 | Fr. | C | Finalist for 2019 7A State Player of the Year in Alabama |

#### Out

|    |                  |      |     |   |  |
|----|------------------|------|-----|---|--|
| 3  | Jordyn Cambridge | 5-9  | So. | G | Injured in SEC Tournament, SEC steals leader last year |
| 12 | Demi Washington  | 5-10 | So. | G | espnW Top 100 guard; started 11 games last season      |
| 24 | Autumn Newby     | 6-2  | Sr. | F | Started 84 games in first three seasons; opted-out     |
| 25 | Kyndall Golden   | 6-3  | So. | F | Missed last 25 games last season with knee injury      |
| 33 | Kiara Pearl      | 5-8  | So. | G | Missed last four games last season with knee injury    |
| 50 | Kaylon Smith     | 5-10 | So. | F | Florida native; career-high 12 pts at Tennessee State  |

## Numerical Roster

| No. | Name              | Pos. | Ht.  | Yr. | Hometown (High School)                     |
|-----|-------------------|------|------|-----|--|
| 0   | Bella LaChance    | G    | 5-6  | Fr. | Davie, Fla. (St. Thomas Aquinas)           |
| 1   | Enna Pehadzic     | G    | 5-9  | 5th | Horsens, Denmark (Horsens Statsskole)      |
| 2   | Chelsie Hall      | G    | 5-7  | Sr. | Boca Raton, Fla. (Seffner Christian)       |
| 3   | Jordyn Cambridge  | G    | 5-9  | Jr. | Nashville, Tenn. (The Ensworth School)     |
| 5   | Yaubryon Chambers | F    | 6-1  | So. | Murfreesboro, Tenn. (Providence Christian) |
| 12  | Demi Washington   | G    | 5-10 | So. | Wake Forest, N.C. (New Hope (Md.))         |
| 15  | Brinae Alexander  | F    | 5-10 | Jr. | Murfreesboro, Tenn. (Riverdale)            |
| 22  | Brylee Bartram    | G    | 5-8  | So. | Tampa, Fla. (Seffner Christian Academy)    |
| 23  | Koi Love          | F    | 6-0  | So. | Orlando, Fla. (Miami Country Day)          |
| 24  | Autumn Newby      | F    | 6-2  | Sr. | Lawrenceville, Ga. (Archer)                |
| 25  | Kyndall Golden    | F    | 6-3  | So. | Atlanta, Ga. (New Manchester)              |
| 33  | Kiara Pearl       | G    | 5-8  | So. | Louisville, Ky. (Eastern)                  |
| 44  | Emily Bowman      | C    | 6-6  | Fr. | Huntsville, Ala. (Huntsville)              |
| 50  | Kaylon Smith      | F    | 5-10 | Fr. | West Palm Beach, Fla. (Oxbridge)           |

## Coaching Staff

**Head Coach** – Stephanie White (Purdue, 1999), fifth season

**Associate Head Coach** – Kelly Komara (Purdue, 2002), fifth season

**Assistant Coach** – Gary Redus II (South Alabama, 2011), second season

**Assistant Coach** – Marqu'es Webb (Vanderbilt, 2017), first season

## Support Staff

**Director of Basketball Operations** – Drew Stanich, fifth season (Indiana, 2014)

**Director of Scouting and Technology** – Lindsay Davis, fifth season (Iowa, 2007)

**Digital and Video Coordinator** – Alex Penrose, first season (Ohio, 2019)

**Graduate Assistant** – Eric Mundinger, first season (Memphis, 2020)

**Strength and Conditioning** – Allison Randall, second season (Morgan State, 2011)

**Athletic Trainer** – Cheresse Kincaid, second season (UC San Bernardino, 2006; Texas Tech, 2012)

## Student-Athlete Pronunciations

Brinae Alexander — brin-ay

Emily Bowman — boh-man

Yaubryon Chambers — yaw-bree-YAWN

Kyndall Golden — ken-dull

Autumn Newby — new-bee

Kiara Pearl — kee-air-uh

Enna Pehadzic — En-UH Ped-HAD-Zick

## Staff Pronunciations

Gary Redus II — ree-dus

Marqu'es Webb — mar-kezz

Cheresse Kincaid — shuh-reece

## Roster Breakdown

### Class Year

Freshmen (2): Bowman, LaChance

Sophomores (7): Bartram, Chambers, Golden, Love, Pearl, Smith, Washington

Juniors (2): Cambridge, Alexander

Seniors (1): Hall

Fifth-Year (1): Pehadzic

### State/Country

Alabama (1): Bowman

Florida (4): Hall, Love, Smith, LaChance

Georgia (2): Golden, Newby

Kentucky (1): Pearl

North Carolina (1): Washington

Tennessee (3): Alexander, Cambridge, Chambers

--

Denmark (1): Pehadzic

### Social Media

Twitter (12): @BuhhNaeNae (Alexander), @BryleeBartram, @emilybowman\_44, @jodyforever3 (Cambridge), @Yaubyspot (Chambers), @KyndallGolden, @chelsnaton12 (Hall), @BellaLachance0, @koilove10, @autumnnoel24 (Newby), @baller\_kp (Pearl), @KattySmith\_\_ (Smith), @thedemiwash (Washington)

Coaching Staff: @StephanieWhite, @kkomara3, @iGRedus, @mwebb\_22

### Major

Human and Organizational Development (2):

Cambridge, Hall

Medicine, Health and Society (1):

Newby

Psychology (2):

Newby (double major), Washington

# HEAD COACH STEPHANIE WHITE



## RECORD AS HEAD COACH

Fifth Season (All at Vandy)

**Overall:** 45-80

**SEC:** 13-51

## YEAR-BY-YEAR

2020-21 ..... 3-1 (0-0)

2019-20 ..... 14-16 (4-12)

2018-19 ..... 7-23 (2-14)

2017-18 ..... 7-24 (3-13)

2016-17 ..... 14-16 (4-12)

## THE WHITE FILE

College: Purdue (1999)

Three sons: Landon, Aiden, Avery

## MILESTONE WINS

First career win - vs. Kennesaw State,  
86-54 (Nov. 10, 2016)

First SEC Win - vs. Alabama,  
87-80 (Jan. 26, 2017)

## NOTABLES

★ Had a pilots license and attended  
Purdue for its aviation school

★ Received congratulatory letter  
from Purdue alum Neil Armstrong  
following 1999 national title game

## ACCOLADES

★ Named fifth head coach in  
program history in May 2016

★ Won 1999 NCAA championship at  
Purdue and named 1999 National  
Player of the Year

★ 1999 Big Ten Player of the Year  
and Wade Trophy winner

★ CoSIDA Academic All-American  
and 2016 Academic All-American  
Hall of Fame Inductee

★ Head coach of WNBA's Indiana  
Fever from 2014-16, and first rookie  
coach to lead Fever to WNBA Finals.

## Vanderbilt Quick Facts

|                                      |                       |
|--------------------------------------|-----------------------|
| Name .....                           | Vanderbilt University |
| Nickname .....                       | Commodores            |
| Location .....                       | Nashville, Tenn.      |
| Founded .....                        | 1873                  |
| Enrollment .....                     | 6,781                 |
| School Colors .....                  | Black and Gold        |
| Chancellor .....                     | Daniel Diermeier      |
| Faculty Representative .....         | Dr. Ann Price         |
| Athletics Director .....             | Candice Storey Lee    |
| Conference .....                     | Southeastern (SEC)    |
| Home Arena (Capacity) .....          | Memorial Gym (14,326) |
| 2019-20 Record .....                 | 14-16                 |
| SEC Record/Finish .....              | 4-12/12th             |
| Starters Returning/Lost .....        | 3/2                   |
| First Year of Basketball .....       | 1977                  |
| Overall All-Time Record .....        | 856-493 (.634)        |
| Overall SEC Record .....             | 254-249 (.510)        |
| All-Time Home Record .....           | 488-144 (.776)        |
| NCAA Tournaments (Last) .....        | 27 (2014)             |
| Overall NCAA Tournament Record ..... | 39-27 (.590)          |

### Hall Pass

★ Chelsie Hall is now just 22 points from 1,000 in her career. She would be the 38th Commodore to reach that milestone and the first since Christa Reed and Rachel Bell (2014-18).  
 ★ A season ago, Hall led the team with 117 assists—the most for a since Minta Spears had 127 in 2015-16.  
 ★ Hall and Jordyn Cambridge (105 assists) were the first Commodore pair with 100 assists each since 2010-11 when Jasmine Lister (103) and Jence Rhoads (140) accomplished the feat.  
 ★ Hall has started 42 straight games for the Commodores, dating back to Feb. 3, 2019 at Tennessee.

### Dore Debuts

★ South Florida transfer Enna Pehadzic has shined in her first three games in black and gold. While scoring 17 points in her first game at Little Rock, she dropped a team-high 25 points with six three-pointers against ETSU.  
 ★ Freshmen Bella LaChance and Emily Bowman made their collegiate debuts in the opener at Little Rock and have played in each game this season.

### Home Port

★ Thus far this year, the Dorees are 2-0 at home.  
 ★ The Commodores finished 10-6 at Memorial Gym last season (had nine wins in two previous seasons combined) with five of those six losses to Top 25 opponents.

### Sick Bay

★ Junior Jordyn Cambridge, who led the SEC in steals last season, was injured in Vanderbilt's SEC Tournament game last season and will miss the start of the 2020-21 campaign.  
 ★ Kyndall Golden (knee), Kaylon Smith (foot) and Kiara Pearl are also missing the start of the season.  
 ★ Autumn Newby has opted out for the season, while Demi Washington is also out for the season.  
 ★ Last season, between Golden (25), Alexander (23), Pearl (8), LeaLea Carter (4), Newby (3) and Sarah Gordon (3), the Commodores had a combined 66 missed games due to injury. In this year's opener, six of the 14 Commodores (43%) missed the season opener.

### Debriefing

★ Since the start of last season, Vanderbilt is 15-2 when holding opponents under 40 percent from the field.  
 ★ Each of the last two times out, Chattanooga shot 42.4 percent last Sunday and VCU shot 43.5 percent but the Commodores came away with two wins. It marks Vanderbilt's first two wins in the last 17 games when its opponent shot better than 40 percent.  
 ★ Vandy has won 15 of its last 16 when scoring more than 70 points (only loss was season opener on Dec. 5).  
 ★ Since the start of the 2018-19 season, Vanderbilt had lost 22 straight games when being out-rebounded. That streak ended in this year's home opener when ETSU outrebounded the Dorees 50-45 but Vandy won 81-61 and continued against VCU when the Rams outrebounded Vandy 36-35 but the Dorees earned the 90-81 victory  
 ★ Vanderbilt has won nine of its last 10 in December.

### Canceled Trio

★ The home opener against ETSU marked the season opener for the Dorees. Due to a lack of available student-athletes as a result of quarantining individuals with positive COVID-19 tests and those designated as close contacts, along with injuries, the first three games of the season were

canceled vs. Tennessee Tech (Nov. 25), at Middle Tennessee State (Nov. 29) and vs. Texas Tech (Dec. 2).

### 2021 Incoming Class

★ For the first time since 2016, Vanderbilt has three top 100 recruits in same recruiting class by any publication. Kendal Cheesman (Tampa, Fla.), De'Mauri Flournoy (Carrollton, Ga.) and Iyana Moore (Murfreesboro, Tenn.) each signed their letters of intent to make West End home in the Fall of 2021.  
 ★ Each signee has already reached 1,000 career points as they enter their senior seasons, and Prospects Nation has all three in its Top 100 recruits with Flournoy as the 51st-ranked player in the country, Cheesman is 78th and Moore is 84th.

### Moving up the Ranks

★ After four-year associate head coach Shereka Wright took the head coaching position at UT-Arlington, Stephanie White promoted former Commodores standout Marqu'es Webb to assistant coach.  
 ★ Webb was the Director of Player Personnel last season after two years of professional ball overseas. Webb graduated from Vandy in 2017 with a degree in sociology.

### Court Martial

★ Last season, Jordyn Cambridge became the first Commodore to lead the SEC in steals since 1990.  
 ★ Cambridge's 2.83 steals per game ranked 14th in the nation and was the highest single-season average for a Commodore since Deborah Denton finished with 2.90 per game in 1989-90.  
 ★ Cambridge's 85 steals in 2019-20 were the ninth-most in a season in school history and the most in a season for a Commodore since Jennifer Risper stole 91 in 2007-08.

| <u>Commodore SEC Steals Leaders (Gms / Steals - Avg.)</u> |                  |                      |
|---|------------------|----------------------|
| 1982*   | Cathy Bender     | (34 / 111 - 3.3)     |
| 1984  | Donna Atkinson   | (26 / 75 - 2.9)      |
| 1989  | Deborah Denton   | (29 / 92 - 3.2)      |
| 1990  | Jade Huntington  | (30 / 87 - 2.9) tied |
| 2020  | Jordyn Cambridge | (30 / 85 - 2.8)      |

\*Women's basketball was not officially sponsored by the SEC until the 1982-83 season.

### On the (Cam) Bridge

★ Jordyn Cambridge was the only major conference player with 80+ steals, 100+ assists and 150+ rebounds during the 2019-20 regular season (five players total, nationally).  
 ★ Cambridge was the first Vandy player with 100+ assists (105) and 80+ steals (85) in a season since Jade Huntington had 100 and 87 in 1989-90.  
 ★ Cambridge was first in the SEC and second among major conference players listed at 5-foot-9 or shorter with 14 blocks during the 2019-20 regular season (Burton had 17).  
 ★ Cambridge led all SEC players at 5-foot-9 or shorter with 157 rebounds and averaged 5.2 per game.

### Experienced Commander

★ Head Coach Stephanie White is one of six major conference coaches who have won an NCAA title as a player (one of 15 overall).  
 ★ Coach White is one of three college coaches who also served as head coach in the WNBA, alongside Cynthia Cooper-Dyke (Texas Southern) and Nell Fortner (Georgia Tech), while White and Cooper-Dyke are the only two NCAA head coaches with playing and head coaching experience in the WNBA.

### By The Numbers

2019-20 / 2020-21

• Overall ..... 14-16 / 3-1  
 • SEC ..... 4-12 / 0-0  
 • Streak ..... W3

• Home (SEC) ..... 10-6 (3-5) / 2-0  
 • Road (SEC) ..... 3-7 (1-7) / 1-1  
 • Neutral (SEC) ..... 1-3 (0-1) / 0-0

• Overtime ..... 1-0 / 0-0  
 • Ranked opponents ..... 1-7 / 0-0

• Day ..... 6-8 / 2-1  
 • Night ..... 8-8 / 1-0

• November ..... 5-3 / 0-0  
 • December ..... 5-0 / 3-1  
 • January ..... 2-6 / 0-0  
 • February ..... 1-6 / 0-0  
 • March ..... 1-1 / 0-0

• Monday ..... 1-1 / 0-0  
 • Tuesday ..... 1-0 / 1-0  
 • Wednesday ..... 0-2 / 0-0  
 • Thursday ..... 3-6 / 1-0  
 • Friday ..... 3-1 / 0-0  
 • Saturday ..... 1-0 / 0-1  
 • Sunday ..... 5-6 / 1-0

• SEC Network ..... 2-8 / 0-0  
 • SEC Network+ ..... 9-4 / 2-0

• Leading at the half ..... 12-4 / 1-0  
 • Trailing at the half ..... 2-12 / 2-1  
 • Tied at the half ..... 0-0 / 0-0

• Scores 70 points or more ..... 11-0 / 3-1  
 • Scores 61-70 points ..... 3-9 / 0-0  
 • Scores 60 or fewer points ..... 0-7 / 0-0

• Out-rebounded opponent ..... 14-7 / 1-1  
 • Out-rebounded by opponent ..... 0-9 / 2-0

• Shoots 50% or better ..... 5-1 / 1-0  
 • Shoots between 40-49% ..... 7-6 / 1-1  
 • Shoots under 40% ..... 2-9 / 1-0

• Shoots 35% or better from 3-pt. .... 6-4 / 1-0  
 • Shoots 70% or better from FT line ..... 6-5 / 2-1

• Opp. shoots 50% or better ..... 0-7 / 0-1  
 • Opp. shoots 40-49% ..... 0-7 / 2-0  
 • Opp. shoots under 40% ..... 14-2 / 1-0

• Opp. shoots 30 % or better from 3-pt. ... 4-8 / 2-1

• Fewer turnovers than opponent. .... 7-2 / 1-0

• Gold jerseys ..... 3-0 / 0-0  
 • Pink jerseys ..... 1-1 / 0-0

## 2020-21 GAME-BY-GAME STARTERS

| Opponent                       | Result   | G    | G        | G         | F/G  | F        |
|--------------------------------|----------|------|----------|-----------|------|----------|
| at Little Rock (Dec. 5)        | L, 72-84 | Hall | Pehadzic | Alexander | Love | Chambers |
| East Tennessee State (Dec. 8)  | W, 81-61 | Hall | Pehadzic | Alexander | Love | Chambers |
| at Chattanooga (Dec. 13)       | W, 80-78 | Hall | Pehadzic | Alexander | Love | Chambers |
| VCU (Dec. 17)                  | W, 90-81 | Hall | Pehadzic | Alexander | Love | Chambers |
| Gardner-Webb (Dec. 20)         |          |      |          |           |      |          |
| Samford (Dec. 28)              |          |      |          |           |      |          |
| Florida (Dec. 31)*             |          |      |          |           |      |          |
| at Mississippi State (Jan. 3)* |          |      |          |           |      |          |
| at Missouri (Jan. 7)*          |          |      |          |           |      |          |
| Alabama (Jan. 10)*             |          |      |          |           |      |          |
| South Carolina (Jan. 14)*      |          |      |          |           |      |          |
| at Kentucky (Jan. 17)*         |          |      |          |           |      |          |
| Tennessee (Jan. 24)*           |          |      |          |           |      |          |
| at Arkansas (Jan. 28)*         |          |      |          |           |      |          |
| Mississippi State (Feb. 1)*    |          |      |          |           |      |          |
| at Florida (Feb. 4)*           |          |      |          |           |      |          |
| at Texas A&M (Feb. 11)*        |          |      |          |           |      |          |
| at Tennessee (Feb. 14)*        |          |      |          |           |      |          |
| Georgia (Feb. 18)*             |          |      |          |           |      |          |
| at Auburn (Feb. 21)*           |          |      |          |           |      |          |
| at Ole Miss (Feb. 25)*         |          |      |          |           |      |          |
| LSU (Feb. 28)*                 |          |      |          |           |      |          |
| SEC Tournament (March 1)**     |          |      |          |           |      |          |

\*SEC contest

\*\*SEC Tournament (Greenville, S.C.)

## 2020-21 QUARTERLY REPORT

| QUARTER-BY-QUARTER     | 1ST                     | 2ND  | 3RD  | 4TH                     | OT |
|------------------------|-------------------------|--|--|-------------------------|----|
| Leading After          | --                      | 1-0  | 1-0  | 2-0                     | -- |
| Trailing After         | 2-1                     | 1-1  | 1-1  | 0-1                     | -- |
| Tied After             | --                      | --   | --   | --                      | -- |
| Most Vandy Points      | 14                      | 25 (2x)                                      | 28   | 28                      | -- |
|                        | at Chatt. (Dec. 13)     | at Little Rock (Dec. 5)<br>vs. ETSU (Dec. 8) | vs. ETSU (Dec. 8)                              | at Chatt. (Dec. 13)     |    |
| Fewest Vandy Points    | 9                       | 21   | 17   | 15                      | -- |
|                        | at Little Rock (Dec. 5) | at Chatt. (Dec. 13)                          | at Little Rock (Dec. 5)<br>at Chatt. (Dec. 13) | vs. ETSU (Dec. 8)       |    |
| Most Opponent Points   | 26                      | 19   | 20   | 23                      | -- |
|                        | at Little Rock (Dec. 5) | at Chatt. (Dec. 13)                          | at Little Rock (Dec. 5)                        | vs. ETSU (Dec. 8)       | -- |
| Fewest Opponent Points | 17                      | 14   | 7  | 20                      | -- |
|                        | vs. ETSU (Dec. 8)       | vs. ETSU (Dec. 8)                            | vs. ETSU (Dec. 8)                              | at Little Rock (Dec. 5) | -- |

## 2020-21 Vanderbilt Superlatives

### BIGGEST LEAD:

32 vs. ETSU (12/8/20)  
(78-46, 5:41 of 4th)

### BIGGEST DEFICIT:

21 at Little Rock (12/5/20)  
(30-9, 8:27 of 2nd)

### BIGGEST LEAD IN A LOSS:

--

### BIGGEST DEFICIT IN A WIN:

9 at Chattanooga (12/13/20)  
(23-14, 00:00 of 1st)

### BIGGEST HALFTIME LEAD:

7 vs. ETSU (12/8/20); 38-31

### BIGGEST HALFTIME DEFICIT:

7 at Little Rock (12/5/20); 41-34  
7 at Chattanooga (12/13/20); 42-35

### MOST POINTS IN 1ST HALF:

38 vs. ETSU (12/8/20)

38 vs. VCU (12/17/20)

### FEWEST POINTS IN 1ST HALF:

34 at Little Rock (12/5/20)

### MOST POINTS ALLOWED IN 1ST HALF:

42 at Chattanooga (12/13/20)

### FEWEST POINTS ALLOWED IN 1ST HALF:

31 vs. ETSU (12/8/20)

### MOST POINTS IN 2ND HALF:

52 vs. VCU (12/17/20)

### FEWEST POINTS IN 2ND HALF:

40 at Little Rock (12/5/20)

### MOST POINTS ALLOWED IN 2ND HALF:

41 at Little Rock (12/5/20)

41 vs. VCU (12/17/20)

### FEWEST POINTS ALLOWED IN 2ND HALF:

30 vs. ETSU (12/8/20)

### BIGGEST HALFTIME LEAD BLOWN:

--

### BIGGEST HALFTIME DEFICIT ERASED:

7 at Chattanooga (12/13/20); 42-35

### BIGGEST MARGIN OF VICTORY:

20 vs. ETSU (12/8/20); 81-61

### SMALLEST MARGIN OF VICTORY:

2 at Chattanooga (12/13/20); 80-78

### BIGGEST MARGIN OF DEFEAT:

8 at Little Rock (12/5/20); 82-74

### SMALLEST MARGIN OF DEFEAT:

8 at Little Rock (12/5/20); 82-74



**THE LAST TIME VANDERBILT ...****Team****Scored 100 or more points**

106 at Tennessee State (11/25/19)

**Allowed 100 or more points**

100 vs. #23 Arkansas (1/19/20)

111, Belmont (12/21/17)

**Scored under 50 points**

44 at #1 South Carolina (2/17/20)

**Held an opponent to fewer than 40 points**

39 vs. ETSU (12/5/15)

**Scored 50 points in a half**

52 (2nd) vs. VCU (12/17/20)

**Scored 60 points in a half**

66 (2nd), vs. Quinnipiac (11/26/10)

**Allowed 50 points in a half**

52 (1st) at #1 South Carolina (2/17/20)

56 (2nd) at Alabama (1/26/20)

57 (2nd) vs Austin Peay (11/12/18)

57 (1st) vs. Belmont (12/21/17)

**Scored fewer than 20 points in a half**

15 vs. Mizzou (2/10/19)

**Scored fewer than 10 points in a half**

8 (1st) at LSU (1/13/08)

**Held an opponent to 19 points or less in a half**

13 (1st) vs. Ole Miss (2/9/20); led 24-13 at halftime, won 63-47

**Held an opponent to 10 points or less in a half**

8 (1st) vs. Mississippi Valley State (11/15/15)

**Shot 75% or better from the field**

76.2 (32-42) vs. Alabama (2/4/07)

**Shot 60% or better from the field**

69.2% (36-52) vs. Air Force (11/30/15)

64.9% (46-71) at Tennessee State (11/25/19)

**Held an opponent under 25% from the field**

24.1 (13-54) vs. Mississippi Valley State (11/15/15)

**Shot 70% or better for a half**

73.1 (19-26) vs. Troy (12/10/15)

**Shot less than 20% from the field in a half**

18.6% (1st) (6-32) vs. South Carolina (2/16/17)

17.1% (1st) (6-35) vs. Missouri (3/7/13 - SEC Tournament)

**Shot 70% or better from 3 (min. 10 attempts)**

70% (7-10) vs. Ole Miss (3/2/16)

**Made 10 or more 3-point field goals**

10 vs. VCU (12/17/20)

**Did not attempt a 3-point field goal in a half**

(1st half) vs. South Carolina (2/15/15)

(2nd half) vs. Arkansas (1/22/15)

**Had 50 rebounds**

53 vs. Tennessee State (11/25/19)

**Had 25 or more assists**

27 vs. Troy (12/10/15)

**Had 15 steals**

16 vs. Seton Hall (11/29/19)

**Had 10 or fewer turnovers**

10 vs. No. 22 Tennessee (1/30/20)

7 vs. Samford (12/28/18)

**Had 25 or more turnovers**

25 vs. Auburn (3/4/20)

**Had 6 players score double figures**

vs. Lipscomb (12/28/17); Hall 17, Newby 16, Reed 15, Overbeck 15, Bell 10, Whalen 10

**Had 5 players score double figures**

v. UC Irvine (12/20/19); Love 18, Fasoula 14, Hall 11, Cambridge 10, Carter 10

**Had 3 players score 20 or more points**

at Florida (2/6/11): Clarke 23, Holzer 23, Tuomi 20

**Had a player score 40 points**

40, Chantelle Anderson vs. Portland State (12/23/01)

**Had a player score 30 points**

31, Rachel Bell vs. Syracuse (11/24/17)

31, Rachel Bell vs. Alabama, SEC (3/1/17)

30, Christina Foggie vs. Marquette (11/17/13)

30, Autumn Newby vs. North Alabama (11/06/18)

**Had a player with 15 rebounds**

15, Marqu'es Webb vs. Tulane (12/5/16)

**Had a player with 16 rebounds**

16, Koi Love at Chattanooga (12/13/20)

**Had a player with 10 assists**

14, Minta Spears vs. Austin Peay (11/28/15);

10, Chelsie Hall vs. Tennessee State (11/21/18)

**Had a player with five steals**

5, Chelsie Hall at Alabama (1/26/20)

**Had a player with six steals****Had a player with seven steals**

7, Jordyn Cambridge vs. Saint Louis (11/17/19)

**Had a player with five or more blocked shots**

6, Mariella Fasoula v. UC Irvine (12/20/19)

**Had two double-doubles in the same game**

vs. Seton Hall (11/29/19)

Mariella Fasoula (21 points, 11 rebounds)

Koi Love (11 points, 10 rebounds)

**Had consecutive double-doubles by the same player**

Koi Love

(12/8/20 vs. ETSU, 12/13/20 at Chattanooga)

**Had three straight double-doubles by same player**

Koi Love

(12/5/20 at Little Rock, 12/8/20 vs. ETSU, 12/13/20 at Chattanooga)

**Had four straight double-doubles by the same player**

Mariella Fasoula

(11/29 v. Rutgers, 12/5 vs. Tennessee Tech, 12/15 vs. Eastern Kentucky,

12/20/19 v. UC Irvine)

**Had a player with consecutive 20-point, 10-rebound games**

Mariella Fasoula (11/29-12/5/2019)

Tiffany Clarke (2/17-20/2011)

**Played an overtime game**

at Washington (12/21/19); W, 76-74

**Won an overtime game**

at Washington (12/21/19); W, 76-74

**Played double overtime**

at Florida (2/6/11); W, 103-97

**Overcame 10+ halftime deficit**

11 at Washington (12/21/19); Trailed 49-38, won 76-74 in OT

**Individual**

## SEASON STATS

### Game Records

| Record         | Overall | Home | Away | Neutral |
|----------------|---------|------|------|---------|
| ALL GAMES      | 3-1     | 2-0  | 1-1  | 0-0     |
| CONFERENCE     | 0-0     | 0-0  | 0-0  | 0-0     |
| NON-CONFERENCE | 3-1     | 2-0  | 1-1  | 0-0     |

### Score by Periods

| Team       | 1st | 2nd | 3rd | 4th | OT | TOT |
|------------|-----|-----|-----|-----|----|-----|
| Vanderbilt | 56  | 89  | 90  | 90  | 0  | 325 |
| Opponents  | 82  | 72  | 62  | 86  | 0  | 302 |

### Team Box Score

| No.       | Player             |       |        |      | Total   |      | 3-Point |       | F-Throw |      | Rebounds |     |     |      |    |    |    |    |     |     |     |      |  |  |
|-----------|--------------------|-------|--------|------|---------|------|---------|-------|---------|------|----------|-----|-----|------|----|----|----|----|-----|-----|-----|------|--|--|
|           |                    | GP-GS | MIN    | AVG  | FG-FGA  | FG%  | 3FG-FGA | 3FG%  | FT-FTA  | FT%  | OFF      | DEF | TOT | AVG  | PF | DQ | A  | TO | BLK | STL | PTS | AVG  |  |  |
| 23        | LOVE, Koi          | 4-4   | 137:36 | 34.4 | 37-66   | .561 | 2-10    | .200  | 17-24   | .708 | 12       | 30  | 42  | 10.5 | 16 | 1  | 6  | 14 | 6   | 10  | 93  | 23.3 |  |  |
| 2         | HALL, Chelsie      | 4-4   | 140:02 | 35.0 | 23-44   | .523 | 4-4     | 1.000 | 12-14   | .857 | 5        | 14  | 19  | 4.8  | 12 | 0  | 19 | 9  | 0   | 6   | 62  | 15.5 |  |  |
| 1         | PEHADZIC, Enna     | 4-4   | 124:53 | 31.2 | 23-57   | .404 | 10-31   | .323  | 5-8     | .625 | 5        | 9   | 14  | 3.5  | 9  | 0  | 11 | 6  | 1   | 4   | 61  | 15.3 |  |  |
| 15        | ALEXANDER, Brinae  | 4-4   | 132:20 | 33.1 | 17-60   | .283 | 6-27    | .222  | 10-13   | .769 | 8        | 14  | 22  | 5.5  | 11 | 0  | 10 | 14 | 1   | 3   | 50  | 12.5 |  |  |
| 22        | BARTRAM, Brylee    | 4-0   | 94:57  | 23.7 | 11-34   | .324 | 11-32   | .344  | 0-0     | .000 | 2        | 5   | 7   | 1.8  | 3  | 0  | 2  | 5  | 0   | 3   | 33  | 8.3  |  |  |
| 5         | CHAMBERS, Yaubryon | 4-4   | 84:46  | 21.2 | 8-14    | .571 | 0-0     | .000  | 2-4     | .500 | 14       | 8   | 22  | 5.5  | 12 | 0  | 1  | 7  | 5   | 1   | 18  | 4.5  |  |  |
| 44        | BOWMAN, Emily      | 4-0   | 55:43  | 13.9 | 3-6     | .500 | 0-0     | .000  | 1-5     | .200 | 7        | 4   | 11  | 2.8  | 15 | 1  | 0  | 4  | 7   | 1   | 7   | 1.8  |  |  |
| 0         | LACHANCE, Bella    | 4-0   | 29:43  | 7.4  | 0-0     | .000 | 0-0     | .000  | 1-2     | .500 | 1        | 2   | 3   | 0.8  | 8  | 0  | 2  | 2  | 0   | 1   | 1   | 0.3  |  |  |
| Team      |                    |       |        |      |         |      |         |       |         |      | 7        | 14  | 21  |      |    |    |    | 3  |     |     |     |      |  |  |
| Total     |                    | 4     | 800    |      | 122-281 | .434 | 33-104  | .317  | 48-70   | .686 | 61       | 100 | 161 | 40.3 | 86 | 2  | 51 | 64 | 20  | 29  | 325 | 81.3 |  |  |
| Opponents |                    | 4     | 800    |      | 108-253 | .427 | 25-77   | .325  | 61-93   | .656 | 54       | 108 | 162 | 40.5 | 63 | 0  | 60 | 66 | 13  | 19  | 302 | 75.5 |  |  |

### Team Statistics

|                        | VANDY          | OPP            |
|------------------------|----------------|----------------|
| <b>Scoring</b>         | <b>325</b>     | <b>302</b>     |
| Points per game        | 81.3           | 75.5           |
| Scoring margin         | +5.8           | -              |
| <b>Field goals-att</b> | <b>122-281</b> | <b>108-253</b> |
| Field goal pct         | .434           | .427           |
| <b>3 point fg-att</b>  | <b>33-104</b>  | <b>25-77</b>   |
| 3-point FG pct         | .317           | .325           |
| 3-pt FG made per game  | 8.3            | 6.3            |
| <b>Free throws-att</b> | <b>48-70</b>   | <b>61-93</b>   |
| Free throw pct         | .686           | .656           |
| F-Throws made per game | 12.0           | 15.3           |
| <b>Rebounds</b>        | <b>161</b>     | <b>162</b>     |
| Rebounds per game      | 40.3           | 40.5           |
| Rebounding margin      | -0.3           | -              |
| <b>Assists</b>         | <b>51</b>      | <b>60</b>      |
| Assists per game       | 12.8           | 15.0           |
| <b>Turnovers</b>       | <b>64</b>      | <b>66</b>      |
| Turnovers per game     | 16.0           | 16.5           |
| Turnover margin        | +0.5           | -              |
| Assist/turnover ratio  | 0.8            | 0.9            |
| <b>Steals</b>          | <b>29</b>      | <b>19</b>      |
| Steals per game        | 7.3            | 4.8            |
| <b>Blocks</b>          | <b>20</b>      | <b>13</b>      |
| Blocks per game        | 5.0            | 3.3            |
| <b>Winning streak</b>  | <b>3</b>       | <b>-</b>       |
| Home win streak        | 2              | -              |
| <b>Attendance</b>      | <b>46</b>      | <b>353</b>     |
| Home games-Avg/Game    | 2-23           | 2-177          |
| Neutral site-Avg/Game  | -              | 0-0            |

### Team Results

| Date       | Opponent       |   | Score | Att. |
|------------|----------------|---|-------|------|
| 12/05/2020 | at Little Rock | L | 74-82 | 353  |
| 12/08/2020 | ETSU           | W | 81-61 | 0    |
| 12/13/2020 | at Chattanooga | W | 80-78 | 0    |
| 12/17/2020 | VCU            | W | 90-81 | 46   |

## 2019-20 SEC STATS

## Game Records

| Record         | Overall | Home | Away | Neutral |
|----------------|---------|------|------|---------|
| ALL GAMES      | 4-12    | 3-5  | 1-7  | 0-0     |
| CONFERENCE     | 4-12    | 3-5  | 1-7  | 0-0     |
| NON-CONFERENCE | 0-0     | 0-0  | 0-0  | 0-0     |

## Score by Periods

| Team       | 1st | 2nd | 3rd | 4th | OT | TOT  |
|------------|-----|-----|-----|-----|----|------|
| Vanderbilt | 234 | 257 | 243 | 247 | 0  | 981  |
| Opponents  | 323 | 266 | 291 | 291 | 0  | 1171 |

## Team Box Score

| No.       | Player             |       |        |      | Total   |      | 3-Point |      | F-Throw |       | Rebounds |     |     |      |     |    |     |     |     |     |      |      |
|-----------|--------------------|-------|--------|------|---------|------|---------|------|---------|-------|----------|-----|-----|------|-----|----|-----|-----|-----|-----|------|------|
|           |                    | GP-GS | MIN    | AVG  | FG-FGA  | FG%  | 3FG-FGA | 3FG% | FT-FTA  | FT%   | OFF      | DEF | TOT | AVG  | PF  | DQ | A   | TO  | BLK | STL | PTS  | AVG  |
| 23        | LOVE, Koi          | 15-11 | 411:03 | 27.4 | 80-201  | .398 | 3-8     | .375 | 39-61   | .639  | 36       | 57  | 93  | 6.2  | 40  | 1  | 18  | 74  | 8   | 15  | 202  | 13.5 |
| 34        | FASOULA, Mariella  | 16-16 | 453:22 | 28.3 | 81-155  | .523 | 0-0     | .000 | 21-33   | .636  | 31       | 54  | 85  | 5.3  | 44  | 0  | 12  | 23  | 9   | 8   | 183  | 11.4 |
| 02        | HALL, Chelsie      | 16-16 | 502:17 | 31.4 | 68-175  | .389 | 13-41   | .317 | 29-36   | .806  | 16       | 58  | 74  | 4.6  | 37  | 0  | 51  | 38  | 3   | 24  | 178  | 11.1 |
| 33        | PEARL, Kiara       | 10-0  | 145:20 | 14.5 | 24-69   | .348 | 14-47   | .298 | 4-5     | .800  | 3        | 10  | 13  | 1.3  | 13  | 0  | 1   | 13  | 1   | 4   | 66   | 6.6  |
| 03        | CAMBRIDGE, Jordyn  | 16-16 | 487:47 | 30.5 | 39-108  | .361 | 5-25    | .200 | 20-31   | .645  | 20       | 61  | 81  | 5.1  | 47  | 3  | 66  | 59  | 6   | 43  | 103  | 6.4  |
| 24        | NEWBY, Autumn      | 13-13 | 335:32 | 25.8 | 22-43   | .512 | 0-0     | .000 | 23-40   | .575  | 25       | 40  | 65  | 5.0  | 43  | 1  | 12  | 25  | 2   | 17  | 67   | 5.2  |
| 30        | CARTER, LeaLea     | 15-1  | 338:44 | 22.6 | 27-100  | .270 | 0-1     | .000 | 14-21   | .667  | 10       | 33  | 43  | 2.9  | 24  | 1  | 16  | 28  | 1   | 8   | 68   | 4.5  |
| 12        | WASHINGTON, Demi   | 16-7  | 274:20 | 17.1 | 27-82   | .329 | 0-1     | .000 | 11-13   | .846  | 9        | 13  | 22  | 1.4  | 29  | 0  | 6   | 15  | 1   | 8   | 65   | 4.1  |
| 50        | SMITH, Kaylon      | 15-0  | 184:20 | 12.3 | 14-31   | .452 | 1-3     | .333 | 3-8     | .375  | 11       | 19  | 30  | 2.0  | 22  | 1  | 2   | 7   | 6   | 6   | 32   | 2.1  |
| 05        | CHAMBERS, Yaubryon | 8-0   | 64:39  | 8.1  | 7-20    | .350 | 0-0     | .000 | 3-3     | 1.000 | 5        | 8   | 13  | 1.6  | 13  | 0  | 0   | 2   | 1   | 2   | 17   | 2.1  |
| 01        | GORDON, Sarah      | 2-0   | 02:36  | 1.3  | 0-0     | .000 | 0-0     | .000 | 0-0     | .000  | 0        | 0   | 0   | 0.0  | 0   | 0  | 0   | 0   | 0   | 0   | 0    | 0.0  |
| Team      |                    |       |        |      |         |      |         |      |         |       | 45       | 40  | 85  |      |     |    |     | 13  |     |     |      |      |
| Total     |                    | 16    | 3200   |      | 389-984 | .395 | 36-126  | .286 | 167-251 | .665  | 211      | 393 | 604 | 37.8 | 312 | 7  | 184 | 297 | 38  | 135 | 981  | 61.3 |
| Opponents |                    | 16    | 3202   |      | 425-991 | .429 | 88-268  | .328 | 233-327 | .713  | 218      | 420 | 638 | 39.9 | 264 | 0  | 218 | 256 | 86  | 150 | 1171 | 73.2 |

## Team Statistics

|                        | VANDY          | OPP            |
|------------------------|----------------|----------------|
| <b>Scoring</b>         | <b>981</b>     | <b>1171</b>    |
| Points per game        | 61.3           | 73.2           |
| Scoring margin         | -11.9          | -              |
| <b>Field goals-att</b> | <b>389-984</b> | <b>425-991</b> |
| Field goal pct         | .395           | .429           |
| <b>3 point fg-att</b>  | <b>36-126</b>  | <b>88-268</b>  |
| 3-point FG pct         | .286           | .328           |
| 3-pt FG made per game  | 2.3            | 5.5            |
| <b>Free throws-att</b> | <b>167-251</b> | <b>233-327</b> |
| Free throw pct         | .665           | .713           |
| F-Throws made per game | 10.4           | 14.6           |
| <b>Rebounds</b>        | <b>604</b>     | <b>638</b>     |
| Rebounds per game      | 37.8           | 39.9           |
| Rebounding margin      | -2.1           | -              |
| <b>Assists</b>         | <b>184</b>     | <b>218</b>     |
| Assists per game       | 11.5           | 13.6           |
| <b>Turnovers</b>       | <b>297</b>     | <b>256</b>     |
| Turnovers per game     | 18.6           | 16.0           |
| Turnover margin        | -2.6           | -              |
| Assist/turnover ratio  | 0.6            | 0.9            |
| <b>Steals</b>          | <b>135</b>     | <b>150</b>     |
| Steals per game        | 8.4            | 9.4            |
| <b>Blocks</b>          | <b>38</b>      | <b>86</b>      |
| Blocks per game        | 2.4            | 5.4            |
| <b>Winning streak</b>  | <b>1</b>       | <b>-</b>       |
| Home win streak        | 1              | -              |
| <b>Attendance</b>      | <b>21115</b>   | <b>33404</b>   |
| Home games-Avg/Game    | 8-2639         | 8-4176         |
| Neutral site-Avg/Game  | -              | 0-0            |

## Team Results

| Date       | Opponent          |   | Score  | Att.  |
|------------|-------------------|---|--------|-------|
| 01/02/2020 | Auburn            | W | 77-55  | 2255  |
| 01/05/2020 | at Florida        | L | 60-68  | 1229  |
| 01/09/2020 | at Georgia        | W | 63-55  | 2522  |
| 01/12/2020 | South Carolina    | L | 57-93  | 2447  |
| 01/19/2020 | Arkansas          | L | 66-100 | 2734  |
| 01/23/2020 | Mississippi St.   | L | 52-68  | 2157  |
| 01/26/2020 | at Alabama        | L | 61-98  | 2067  |
| 01/30/2020 | Tennessee         | L | 69-78  | 3429  |
| 02/02/2020 | at Auburn         | L | 62-70  | 1728  |
| 02/09/2020 | Ole Miss          | W | 63-47  | 2846  |
| 02/13/2020 | at Texas A&M      | L | 53-74  | 3193  |
| 02/17/2020 | at South Carolina | L | 44-95  | 11249 |
| 02/20/2020 | Missouri          | L | 66-78  | 2166  |
| 02/23/2020 | at Tennessee      | L | 63-67  | 9636  |
| 02/27/2020 | at LSU            | L | 55-61  | 1780  |
| 03/01/2020 | Kentucky          | W | 70-64  | 3081  |

## VANDERBILT GAME-BY-GAME STATS

|                |            |       |   | Total   |      | 3-Pointers |      | Free throws |      | Rebounds |     |     |      |    |    |    |     |     |     |      |  |
|----------------|------------|-------|---|---------|------|------------|------|-------------|------|----------|-----|-----|------|----|----|----|-----|-----|-----|------|--|
| Opponent       | Date       | Score |   | FG-FGA  | PCT  | 3FG-FGA    | PCT  | FT-FTA      | PCT  | OFF      | DEF | TOT | AVG  | PF | A  | TO | BLK | STL | PTS | AVG  |  |
| at Little Rock | 12/05/2020 | 74-82 | L | 29-67   | .433 | 6-24       | .250 | 10-13       | .769 | 15       | 23  | 38  | 38.0 | 20 | 9  | 18 | 4   | 4   | 74  | 74.0 |  |
| ETSU           | 12/08/2020 | 81-61 | W | 28-75   | .373 | 11-37      | .297 | 14-24       | .583 | 21       | 24  | 45  | 41.5 | 25 | 14 | 14 | 7   | 11  | 81  | 77.5 |  |
| at Chattanooga | 12/13/2020 | 80-78 | W | 31-74   | .419 | 6-18       | .333 | 12-16       | .750 | 14       | 29  | 43  | 42.0 | 22 | 11 | 19 | 5   | 10  | 80  | 78.3 |  |
| VCU            | 12/17/2020 | 90-81 | W | 34-65   | .523 | 10-25      | .400 | 12-17       | .706 | 11       | 24  | 35  | 40.3 | 19 | 17 | 13 | 4   | 4   | 90  | 81.3 |  |
| Total          |            | 325   |   | 122-281 | .434 | 33-104     | .317 | 48-70       | .686 | 61       | 100 | 161 | 40.3 | 86 | 51 | 64 | 20  | 29  | 325 | 81.3 |  |
| Opponents      |            | 302   |   | 108-253 | .427 | 25-77      | .325 | 61-93       | .656 | 54       | 108 | 162 | 40.5 | 63 | 60 | 66 | 13  | 19  | 302 | 75.5 |  |

### Vanderbilt Averages

| Games Played | Points/game | FG Pct | 3FG Pct | FT Pct | Rebounds/game | Assists/game | Turnovers/game | Assist/Turnover ratio | Steals/game | Blocks/game |
|--------------|-------------|--------|---------|--------|---------------|--------------|----------------|-----------------------|-------------|-------------|
| 4            | 81.3        | 43.4   | 31.7    | 68.6   | 40.3          | 12.8         | 16.0           | 0.8                   | 7.3         | 5.0         |

## OPPONENT GAME-BY-GAME STATS

|                |            |       |   | Total   |      | 3-Pointers |      | Free throws |      | Rebounds |     |     |      |    |    |    |     |     |     |      |  |
|----------------|------------|-------|---|---------|------|------------|------|-------------|------|----------|-----|-----|------|----|----|----|-----|-----|-----|------|--|
| Opponent       | Date       | Score |   | FG-FGA  | PCT  | 3FG-FGA    | PCT  | FT-FTA      | PCT  | OFF      | DEF | TOT | AVG  | PF | A  | TO | BLK | STL | PTS | AVG  |  |
| at Little Rock | 12/05/2020 | 74-82 | L | 29-67   | .433 | 6-24       | .250 | 10-13       | .769 | 15       | 23  | 38  | 38.0 | 20 | 9  | 18 | 4   | 4   | 74  | 74.0 |  |
| ETSU           | 12/08/2020 | 81-61 | W | 28-75   | .373 | 11-37      | .297 | 14-24       | .583 | 21       | 24  | 45  | 41.5 | 25 | 14 | 14 | 7   | 11  | 81  | 77.5 |  |
| at Chattanooga | 12/13/2020 | 80-78 | W | 31-74   | .419 | 6-18       | .333 | 12-16       | .750 | 14       | 29  | 43  | 42.0 | 22 | 11 | 19 | 5   | 10  | 80  | 78.3 |  |
| VCU            | 12/17/2020 | 90-81 | W | 34-65   | .523 | 10-25      | .400 | 12-17       | .706 | 11       | 24  | 35  | 40.3 | 19 | 17 | 13 | 4   | 4   | 90  | 81.3 |  |
| Total          |            | 325   |   | 122-281 | .434 | 33-104     | .317 | 48-70       | .686 | 61       | 100 | 161 | 40.3 | 86 | 51 | 64 | 20  | 29  | 325 | 81.3 |  |
| Opponents      |            | 302   |   | 108-253 | .427 | 25-77      | .325 | 61-93       | .656 | 54       | 108 | 162 | 40.5 | 63 | 60 | 66 | 13  | 19  | 302 | 75.5 |  |

### Vanderbilt Averages

| Games Played | Points/game | FG Pct | 3FG Pct | FT Pct | Rebounds/game | Assists/game | Turnovers/game | Assist/Turnover ratio | Steals/game | Blocks/game |
|--------------|-------------|--------|---------|--------|---------------|--------------|----------------|-----------------------|-------------|-------------|
| 4            | 81.3        | 43.4   | 31.7    | 68.6   | 40.3          | 12.8         | 16.0           | 0.8                   | 7.3         | 5.0         |



**#0 BELLA LACHANCE****2020-21 Game-by-Game Statistics****#0 LACHANCE, Bella**

| Opponent       | Date       | GS       | MIN          | Total      |             | 3-Pointers |             | Free throws |             | Rebounds |          |          |            | PF       |          | T/O      | BLK      | STL      | PTS      | AVG        |
|----------------|------------|----------|--------------|------------|-------------|------------|-------------|-------------|-------------|----------|----------|----------|------------|----------|----------|----------|----------|----------|----------|------------|
|                |            |          |              | FG-FGA     | PCT         | 3FG-3FGA   | PCT         | FT-FTA      | PCT         | OFF      | DEF      | TOT      | AVG        |          |          |          |          |          |          |            |
| at Little Rock | 12/05/2020 |          | 10:23        | 0-0        | .000        | 0-0        | .000        | 0-0         | .000        | 0        | 0        | 0        | 0.0        | 2        | 0        | 0        | 0        | 0        | 0        | 0.0        |
| ETSU           | 12/08/2020 |          | 11:00        | 0-0        | .000        | 0-0        | .000        | 1-2         | .500        | 1        | 1        | 2        | 1.0        | 3        | 1        | 0        | 0        | 0        | 1        | 0.5        |
| at Chattanooga | 12/13/2020 |          | 06:06        | 0-0        | .000        | 0-0        | .000        | 0-0         | .000        | 0        | 1        | 1        | 1.0        | 2        | 0        | 2        | 0        | 1        | 0        | 0.3        |
| VCU            | 12/17/2020 |          | 02:15        | 0-0        | .000        | 0-0        | .000        | 0-0         | .000        | 0        | 0        | 0        | 0.8        | 1        | 1        | 0        | 0        | 0        | 0        | 0.3        |
| <b>Totals</b>  |            | <b>0</b> | <b>29:43</b> | <b>0-0</b> | <b>.000</b> | <b>0-0</b> | <b>.000</b> | <b>1-2</b>  | <b>.500</b> | <b>1</b> | <b>2</b> | <b>3</b> | <b>0.8</b> | <b>8</b> | <b>2</b> | <b>2</b> | <b>0</b> | <b>1</b> | <b>1</b> | <b>0.3</b> |

**Player Averages**

| Games Played | Minutes/game | Points/game | FG Pct | 3FG Pct | FT Pct | Rebounds/game | Assists/game | Turnovers/game | Assist/Turnover ratio | Steals/game | Blocks/game |
|--------------|--------------|-------------|--------|---------|--------|---------------|--------------|----------------|-----------------------|-------------|-------------|
| 4            | 7.4          | 0.3         | 0.0    | 0.0     | 50.0   | 0.8           | 0.5          | 0.5            | 1.0                   | 0.3         | 0.0         |

**Career Statistics/Career Highs****LACHANCE, Bella**

|              |       |            |               | Field Goals |             | 3-Point    |             | F-Throws   |             | Rebounds |          |          |            | Scoring    |          |          |          |          |          |            |
|--------------|-------|------------|---------------|-------------|-------------|------------|-------------|------------|-------------|----------|----------|----------|------------|------------|----------|----------|----------|----------|----------|------------|
| SEASON       | TEAM  | GP-GS      | MIN/AVG       | FG-FGA      | FG%         | 3FG-FGA    | 3FG%        | FT-FTA     | FT%         | OFF      | DEF      | TOT      | AVG        | PF-FO      | AST      | TO       | BLK      | STL      | PTS      | AVG        |
| 2020-21      | Vandy | 4-0        | 30/7.4        | 0-0         | .000        | 0-0        | .000        | 1-2        | .500        | 1        | 2        | 3        | 0.8        | 8-0        | 2        | 2        | 0        | 1        | 1        | 0.3        |
| <b>TOTAL</b> |       | <b>4-0</b> | <b>30/7.4</b> | <b>0-0</b>  | <b>.000</b> | <b>0-0</b> | <b>.000</b> | <b>1-2</b> | <b>.500</b> | <b>1</b> | <b>2</b> | <b>3</b> | <b>0.8</b> | <b>8-0</b> | <b>2</b> | <b>2</b> | <b>0</b> | <b>1</b> | <b>1</b> | <b>0.3</b> |

**Single Game Highs**

| Statistic   | Value |                                   |
|-------------|-------|-----------------------------------|
| Points      | 1     | vs ETSU 12/08/20                  |
| Rebounds    | 2     | vs ETSU 12/08/20                  |
| Assists     | 1     | vs ETSU 12/08/20, vs VCU 12/17/20 |
| Steals      | 1     | at Chattanooga 12/13/20           |
| FT Made     | 1     | vs ETSU 12/08/20                  |
| FT Attempts | 2     | vs ETSU 12/08/20                  |

# #1 ENNA PEHADZIC

## 2020-21 Game-by-Game Statistics

### #1 PEHADZIC, Enna

| Opponent       | Date       | GS       | MIN           | Total        |             | 3-Pointers   |             | Free throws |             | Rebounds |          |           |            | PF       | A         | T/O      | BLK      | STL      | PTS       | AVG         |
|----------------|------------|----------|---------------|--------------|-------------|--------------|-------------|-------------|-------------|----------|----------|-----------|------------|----------|-----------|----------|----------|----------|-----------|-------------|
|                |            |          |               | FG-FGA       | PCT         | 3FG-3FGA     | PCT         | FT-FTA      | PCT         | OFF      | DEF      | TOT       | AVG        |          |           |          |          |          |           |             |
| at Little Rock | 12/05/2020 | *        | 33:52         | 7-15         | .467        | 2-6          | .333        | 1-1         | 1.000       | 1        | 1        | 2         | 2.0        | 4        | 1         | 1        | 0        | 1        | 17        | 17.0        |
| ETSU           | 12/08/2020 | *        | 35:23         | 9-23         | .391        | 6-15         | .400        | 1-2         | .500        | 1        | 2        | 3         | 2.5        | 2        | 5         | 2        | 0        | 0        | 25        | 21.0        |
| at Chattanooga | 12/13/2020 | *        | 30:28         | 4-8          | .500        | 1-3          | .333        | 2-3         | .667        | 3        | 4        | 7         | 4.0        | 1        | 3         | 1        | 1        | 2        | 11        | 17.7        |
| VCU            | 12/17/2020 | *        | 25:10         | 3-11         | .273        | 1-7          | .143        | 1-2         | .500        | 0        | 2        | 2         | 3.5        | 2        | 2         | 2        | 0        | 1        | 8         | 15.3        |
| <b>Totals</b>  |            | <b>4</b> | <b>124:53</b> | <b>23-57</b> | <b>.404</b> | <b>10-31</b> | <b>.323</b> | <b>5-8</b>  | <b>.625</b> | <b>5</b> | <b>9</b> | <b>14</b> | <b>3.5</b> | <b>9</b> | <b>11</b> | <b>6</b> | <b>1</b> | <b>4</b> | <b>61</b> | <b>15.3</b> |

### Player Averages

| Games Played | Minutes/game | Points/game | FG Pct | 3FG Pct | FT Pct | Rebounds/game | Assists/game | Turnovers/game | Assist/Turnover ratio | Steals/game | Blocks/game |
|--------------|--------------|-------------|--------|---------|--------|---------------|--------------|----------------|-----------------------|-------------|-------------|
| 4            | 31.2         | 15.3        | 40.4   | 32.3    | 62.5   | 3.5           | 2.8          | 1.5            | 1.8                   | 1.0         | 0.3         |

## Career Statistics/Career Highs

### PEHADZIC, Enna

|                 |       |       |           | Field Goals |      | 3-Point |      | F-Throws |       | Rebounds |     |     |     |       |     |    |     |     |     | Scoring |  |
|-----------------|-------|-------|-----------|-------------|------|---------|------|----------|-------|----------|-----|-----|-----|-------|-----|----|-----|-----|-----|---------|--|
| SEASON          | TEAM  | GP-GS | MIN/AVG   | FG-FGA      | FG%  | 3FG-FGA | 3FG% | FT-FTA   | FT%   | OFF      | DEF | TOT | AVG | PF-FO | AST | TO | BLK | STL | PTS | AVG     |  |
| 2017-18         | USF   | 9-0   | 38/4.2    | 4-15        | .267 | 2-5     | .400 | 4-4      | 1.000 | 2        | 7   | 9   | 1.0 | 1-0   | 0   | 2  | 0   | 0   | 14  | 1.6     |  |
| 2018-19         | USF   | 35-23 | 989/28.2  | 144-457     | .315 | 72-224  | .321 | 62-88    | .705  | 49       | 123 | 172 | 4.9 | 38-0  | 14  | 61 | 1   | 24  | 422 | 12.1    |  |
| 2019-20         | USF   | 28-9  | 369/13.2  | 38-141      | .270 | 27-97   | .278 | 15-22    | .682  | 18       | 27  | 45  | 1.6 | 32-0  | 18  | 23 | 0   | 11  | 118 | 4.2     |  |
| 2020-21         | Vandy | 4-4   | 125/31.2  | 23-57       | .404 | 10-31   | .323 | 5-8      | .625  | 5        | 9   | 14  | 3.5 | 9-0   | 11  | 6  | 1   | 4   | 61  | 15.3    |  |
| TOTAL FOR Vandy |       | 4-4   | 125/31.2  | 23-57       | .404 | 10-31   | .323 | 5-8      | .625  | 5        | 9   | 14  | 3.5 | 9-0   | 11  | 6  | 1   | 4   | 61  | 15.3    |  |
| TOTAL           |       | 76-36 | 1520/20.0 | 209-670     | .312 | 111-357 | .311 | 86-122   | .705  | 74       | 166 | 240 | 3.2 | 80-0  | 43  | 92 | 2   | 39  | 615 | 8.1     |  |

### Single Game Highs

| Statistic    | Value |   |
|--------------|-------|---|
| Points       | 35    | at East Carolina 02/20/19   |
| Rebounds     | 13    | at Temple 01/05/19  |
| Assists      | 5     | vs ETSU 12/08/20  |
| Steals       | 3     | vs Memphis 01/23/19, at Temple 01/05/19                               |
| Blocks       | 1     | vs Vermont 12/17/18, at Chattanooga 12/13/20                          |
| FG Made      | 9     | vs Tulane 03/08/19, vs ETSU 12/08/20                                  |
| FG Attempts  | 26    | at East Carolina 02/20/19   |
| 3FG Made     | 6     | at East Carolina 02/20/19, vs Jacksonville 11/05/19, vs ETSU 12/08/20 |
| 3FG Attempts | 15    | at East Carolina 02/20/19, vs ETSU 12/08/20                           |
| FT Made      | 13    | at East Carolina 02/20/19   |
| FT Attempts  | 14    | at East Carolina 02/20/19   |

**#2 CHELSIE HALL****2020-21 Game-by-Game Statistics****#2 HALL, Chelsie**

| Opponent       | Date       | GS       | MIN           | Total        |             | 3-Pointers |              | Free throws  |             | Rebounds |           |           |            | PF        | A         | T/O      | BLK      | STL      | PTS       | AVG         |
|----------------|------------|----------|---------------|--------------|-------------|------------|--------------|--------------|-------------|----------|-----------|-----------|------------|-----------|-----------|----------|----------|----------|-----------|-------------|
|                |            |          |               | FG-FGA       | PCT         | 3FG-3FGA   | PCT          | FT-FTA       | PCT         | OFF      | DEF       | TOT       | AVG        |           |           |          |          |          |           |             |
| at Little Rock | 12/05/2020 | *        | 37:46         | 6-11         | .545        | 1-1        | 1.000        | 3-3          | 1.000       | 1        | 3         | 4         | 4.0        | 4         | 3         | 2        | 0        | 1        | 16        | 16.0        |
| ETSU           | 12/08/2020 | *        | 30:38         | 6-11         | .545        | 1-1        | 1.000        | 3-4          | .750        | 2        | 0         | 2         | 3.0        | 3         | 4         | 1        | 0        | 2        | 16        | 16.0        |
| at Chattanooga | 12/13/2020 | *        | 33:53         | 7-12         | .583        | 1-1        | 1.000        | 4-5          | .800        | 0        | 6         | 6         | 4.0        | 3         | 3         | 3        | 0        | 3        | 19        | 17.0        |
| VCU            | 12/17/2020 | *        | 37:45         | 4-10         | .400        | 1-1        | 1.000        | 2-2          | 1.000       | 2        | 5         | 7         | 4.8        | 2         | 9         | 3        | 0        | 0        | 11        | 15.5        |
| <b>Totals</b>  |            | <b>4</b> | <b>140:02</b> | <b>23-44</b> | <b>.523</b> | <b>4-4</b> | <b>1.000</b> | <b>12-14</b> | <b>.857</b> | <b>5</b> | <b>14</b> | <b>19</b> | <b>4.8</b> | <b>12</b> | <b>19</b> | <b>9</b> | <b>0</b> | <b>6</b> | <b>62</b> | <b>15.5</b> |

**Player Averages**

| Games Played | Minutes/game | Points/game | FG Pct | 3FG Pct | FT Pct | Rebounds/game | Assists/game | Turnovers/game | Assist/Turnover ratio | Steals/game | Blocks/game |
|--------------|--------------|-------------|--------|---------|--------|---------------|--------------|----------------|-----------------------|-------------|-------------|
| 4            | 35.0         | 15.5        | 52.3   | 100.0   | 85.7   | 4.8           | 4.8          | 2.3            | 2.1                   | 1.5         | 0.0         |

**Career Statistics/Career Highs****HALL, Chelsie**

|              |       |              |                  | Field Goals    |             | 3-Point       |             | F-Throws       |             | Rebounds  |            |            |            | Scoring      |            |            |          |            |            |             |
|--------------|-------|--------------|------------------|----------------|-------------|---------------|-------------|----------------|-------------|-----------|------------|------------|------------|--------------|------------|------------|----------|------------|------------|-------------|
| SEASON       | TEAM  | GP-GS        | MIN/AVG          | FG-FGA         | FG%         | 3FG-FGA       | 3FG%        | FT-FTA         | FT%         | OFF       | DEF        | TOT        | AVG        | PF-FO        | AST        | TO         | BLK      | STL        | PTS        | AVG         |
| 2017-18      | Vandy | 31-31        | 917/29.6         | 143-310        | .461        | 14-43         | .326        | 70-100         | .700        | 21        | 86         | 107        | 3.5        | 69-1         | 95         | 106        | 0        | 33         | 370        | 11.9        |
| 2018-19      | Vandy | 23-15        | 577/25.1         | 82-212         | .387        | 12-38         | .316        | 51-73          | .699        | 16        | 38         | 54         | 2.3        | 43-1         | 75         | 62         | 2        | 19         | 227        | 9.9         |
| 2019-20      | Vandy | 30-30        | 972/32.4         | 122-320        | .381        | 23-76         | .303        | 52-64          | .813        | 21        | 103        | 124        | 4.1        | 68-0         | 117        | 80         | 5        | 49         | 319        | 10.6        |
| 2020-21      | Vandy | 4-4          | 140/35.0         | 23-44          | .523        | 4-4           | 1.000       | 12-14          | .857        | 5         | 14         | 19         | 4.8        | 12-0         | 19         | 9          | 0        | 6          | 62         | 15.5        |
| <b>TOTAL</b> |       | <b>88-80</b> | <b>2606/29.6</b> | <b>370-886</b> | <b>.418</b> | <b>53-161</b> | <b>.329</b> | <b>185-251</b> | <b>.737</b> | <b>63</b> | <b>241</b> | <b>304</b> | <b>3.5</b> | <b>192-2</b> | <b>306</b> | <b>257</b> | <b>7</b> | <b>107</b> | <b>978</b> | <b>11.1</b> |

**Single Game Highs**

| Statistic    | Value |   |
|--------------|-------|---|
| Points       | 26    | vs Belmont 12/21/17   |
| Rebounds     | 8     | at Tennessee 01/07/18, vs Tennessee Tech 12/05/19, at Washington 12/21/19 |
| Assists      | 10    | vs Tennessee St. 11/21/18   |
| Steals       | 5     | vs Kentucky 01/15/18, at Alabama 01/26/20                                 |
| Blocks       | 2     | at Georgia 01/09/20   |
| FG Made      | 10    | vs Ball St. 11/20/17  |
| FG Attempts  | 20    | vs Tennessee St. 11/21/18   |
| 3FG Made     | 2     | 11 times  |
| 3FG Attempts | 6     | vs Eastern Ky. 12/15/19   |
| FT Made      | 12    | at Middle Tenn. 11/09/18  |
| FT Attempts  | 14    | at Middle Tenn. 11/09/18, at Tennessee 01/07/18                           |

## #3 JORDYN CAMBRIDGE

### 2019-20 Game-by-Game Statistics

#### #03 CAMBRIDGE, Jordyn

| Opponent          | Date       | GS | MIN    | FG-FGA | PCT  | 3FG-3FGA | PCT   | FT-FTA | PCT   | OFF | DEF | TOT | AVG | PF | A   | T/O | BLK | STL | PTS | AVG  |
|-------------------|------------|----|--------|--------|------|----------|-------|--------|-------|-----|-----|-----|-----|----|-----|-----|-----|-----|-----|------|
| Jacksonville St.  | 11/05/2019 | *  | 31:08  | 5-10   | .500 | 3-3      | 1.000 | 5-6    | .833  | 0   | 2   | 2   | 2.0 | 4  | 2   | 4   | 0   | 3   | 18  | 18.0 |
| Radford           | 11/08/2019 | *  | 26:54  | 0-7    | .000 | 0-2      | .000  | 0-0    | .000  | 0   | 2   | 2   | 2.0 | 0  | 2   | 2   | 2   | 4   | 0   | 9.0  |
| UConn             | 11/13/2019 | *  | 24:36  | 1-5    | .200 | 0-3      | .000  | 0-0    | .000  | 1   | 5   | 6   | 3.3 | 2  | 2   | 2   | 0   | 1   | 2   | 6.7  |
| Saint Louis       | 11/17/2019 | *  | 35:42  | 1-7    | .143 | 0-4      | .000  | 2-2    | 1.000 | 1   | 5   | 6   | 4.0 | 3  | 3   | 3   | 2   | 7   | 4   | 6.0  |
| Furman            | 11/22/2019 | *  | 27:07  | 5-13   | .385 | 0-3      | .000  | 4-4    | 1.000 | 3   | 3   | 6   | 4.4 | 3  | 3   | 1   | 0   | 5   | 14  | 7.6  |
| at Tennessee St.  | 11/25/2019 | *  | 28:00  | 2-6    | .333 | 0-1      | .000  | 3-4    | .750  | 0   | 8   | 8   | 5.0 | 2  | 1   | 2   | 2   | 3   | 7   | 7.5  |
| vs Rutgers        | 11/28/2019 | *  | 23:09  | 0-3    | .000 | 0-0      | .000  | 0-0    | .000  | 1   | 2   | 3   | 4.7 | 5  | 2   | 4   | 1   | 2   | 0   | 6.4  |
| vs Seton Hall     | 11/29/2019 | *  | 31:39  | 4-11   | .364 | 1-5      | .200  | 2-4    | .500  | 1   | 6   | 7   | 5.0 | 2  | 4   | 5   | 0   | 5   | 11  | 7.0  |
| Tennessee Tech    | 12/05/2019 | *  | 34:44  | 6-11   | .545 | 2-3      | .667  | 0-1    | .000  | 1   | 3   | 4   | 4.9 | 3  | 0   | 5   | 0   | 1   | 14  | 7.8  |
| Eastern Ky.       | 12/15/2019 | *  | 25:10  | 2-5    | .400 | 1-2      | .500  | 3-4    | .750  | 0   | 9   | 9   | 5.3 | 4  | 3   | 2   | 0   | 0   | 8   | 7.8  |
| vs UC Irvine      | 12/20/2019 | *  | 28:50  | 4-13   | .308 | 2-4      | .500  | 0-2    | .000  | 2   | 4   | 6   | 5.4 | 0  | 4   | 4   | 1   | 3   | 10  | 8.0  |
| at Washington     | 12/21/2019 | *  | 27:45  | 2-10   | .200 | 0-2      | .000  | 0-1    | .000  | 1   | 4   | 5   | 5.3 | 4  | 4   | 3   | 0   | 3   | 4   | 7.7  |
| Columbia          | 12/29/2019 | *  | 29:20  | 5-11   | .455 | 0-0      | .000  | 1-1    | 1.000 | 3   | 7   | 10  | 5.7 | 2  | 5   | 3   | 0   | 3   | 11  | 7.9  |
| Auburn            | 01/02/2020 | *  | 34:09  | 3-5    | .600 | 0-1      | .000  | 0-0    | .000  | 0   | 7   | 7   | 5.8 | 5  | 7   | 6   | 0   | 5   | 6   | 7.8  |
| at Florida        | 01/05/2020 | *  | 31:45  | 4-8    | .500 | 1-1      | 1.000 | 2-4    | .500  | 2   | 2   | 4   | 5.7 | 3  | 1   | 4   | 0   | 1   | 11  | 8.0  |
| at Georgia        | 01/09/2020 | *  | 31:51  | 1-3    | .333 | 0-1      | .000  | 0-0    | .000  | 4   | 4   | 8   | 5.8 | 1  | 3   | 4   | 0   | 2   | 2   | 7.6  |
| South Carolina    | 01/12/2020 | *  | 22:28  | 0-4    | .000 | 0-1      | .000  | 0-0    | .000  | 0   | 2   | 2   | 5.6 | 2  | 2   | 5   | 0   | 3   | 0   | 7.2  |
| Arkansas          | 01/19/2020 | *  | 30:44  | 0-2    | .000 | 0-0      | .000  | 1-4    | .250  | 3   | 5   | 8   | 5.7 | 3  | 6   | 6   | 0   | 2   | 1   | 6.8  |
| Mississippi St.   | 01/23/2020 | *  | 29:42  | 1-5    | .200 | 0-1      | .000  | 4-4    | 1.000 | 2   | 2   | 4   | 5.6 | 5  | 1   | 5   | 1   | 3   | 6   | 6.8  |
| at Alabama        | 01/26/2020 | *  | 27:13  | 4-8    | .500 | 0-1      | .000  | 3-3    | 1.000 | 2   | 1   | 3   | 5.5 | 2  | 3   | 5   | 3   | 3   | 11  | 7.0  |
| Tennessee         | 01/30/2020 | *  | 34:02  | 4-11   | .364 | 0-1      | .000  | 2-2    | 1.000 | 2   | 0   | 2   | 5.3 | 4  | 5   | 1   | 0   | 3   | 10  | 7.1  |
| at Auburn         | 02/02/2020 | *  | 28:42  | 1-5    | .200 | 0-2      | .000  | 0-0    | .000  | 0   | 4   | 4   | 5.3 | 3  | 8   | 4   | 0   | 4   | 2   | 6.9  |
| Ole Miss          | 02/09/2020 | *  | 25:11  | 0-5    | .000 | 0-2      | .000  | 2-2    | 1.000 | 2   | 6   | 8   | 5.4 | 3  | 5   | 3   | 0   | 3   | 2   | 6.7  |
| at Texas A&M      | 02/13/2020 | *  | 33:60  | 4-12   | .333 | 2-5      | .400  | 1-2    | .500  | 1   | 7   | 8   | 5.5 | 1  | 4   | 0   | 0   | 4   | 11  | 6.9  |
| at South Carolina | 02/17/2020 | *  | 28:00  | 3-9    | .333 | 0-0      | .000  | 0-0    | .000  | 1   | 1   | 2   | 5.4 | 4  | 5   | 3   | 0   | 0   | 6   | 6.8  |
| Missouri          | 02/20/2020 | *  | 31:39  | 3-8    | .375 | 0-2      | .000  | 2-2    | 1.000 | 0   | 6   | 6   | 5.4 | 5  | 5   | 4   | 1   | 4   | 8   | 6.9  |
| at Tennessee      | 02/23/2020 | *  | 35:27  | 4-11   | .364 | 1-4      | .250  | 2-6    | .333  | 0   | 6   | 6   | 5.4 | 2  | 5   | 4   | 0   | 3   | 11  | 7.0  |
| at LSU            | 02/27/2020 | *  | 27:59  | 2-5    | .400 | 0-1      | .000  | 0-0    | .000  | 1   | 2   | 3   | 5.3 | 2  | 4   | 4   | 0   | 2   | 4   | 6.9  |
| Kentucky          | 03/01/2020 | *  | 34:55  | 5-7    | .714 | 1-2      | .500  | 1-2    | .500  | 0   | 6   | 6   | 5.3 | 2  | 2   | 1   | 1   | 1   | 12  | 7.1  |
| vs Auburn         | 03/04/2020 | *  | 13:40  | 2-5    | .400 | 0-1      | .000  | 0-0    | .000  | 1   | 1   | 2   | 5.2 | 1  | 4   | 0   | 0   | 2   | 4   | 7.0  |
| Totals            |            | 30 | 875:31 | 78-225 | .347 | 14-58    | .241  | 40-60  | .667  | 35  | 122 | 157 | 5.2 | 82 | 105 | 99  | 14  | 85  | 210 | 7.0  |

#### Player Averages

| Games Played | Minutes/game | Points/game | FG Pct | 3FG Pct | FT Pct | Rebounds/game | Assists/game | Turnovers/game | Assist/Turnover ratio | Steals/game | Blocks/game |
|--------------|--------------|-------------|--------|---------|--------|---------------|--------------|----------------|-----------------------|-------------|-------------|
| 30           | 29.2         | 7.0         | 34.7   | 24.1    | 66.7   | 5.2           | 3.5          | 3.3            | 1.1                   | 2.8         | 0.5         |

### Career Statistics/Career Highs

#### CAMBRIDGE, Jordyn

| SEASON       | TEAM  | GP-GS        | MIN/AVG          | Field Goals         | 3-Point           | F-Throws          | Rebounds              | PF-FO        | AST        | TO         | BLK       | STL        | PTS        | AVG        |
|--------------|-------|--------------|------------------|---------------------|-------------------|-------------------|-----------------------|--------------|------------|------------|-----------|------------|------------|------------|
| 2018-19      | Vandy | 24-0         | 369/15.4         | 28-83 .337          | 4-19 .211         | 18-31 .581        | 13 29 42 1.8          | 43-1         | 40         | 40         | 2         | 20         | 78         | 3.3        |
| 2019-20      | Vandy | 30-30        | 876/29.2         | 78-225 .347         | 14-58 .241        | 40-60 .667        | 35 122 157 5.2        | 82-4         | 105        | 99         | 14        | 85         | 210        | 7.0        |
| <b>TOTAL</b> |       | <b>54-30</b> | <b>1245/23.0</b> | <b>106-308 .344</b> | <b>18-77 .234</b> | <b>58-91 .637</b> | <b>48 151 199 3.7</b> | <b>125-5</b> | <b>145</b> | <b>139</b> | <b>16</b> | <b>105</b> | <b>288</b> | <b>5.3</b> |

#### Single Game Highs

| Statistic    | Value |  |
|--------------|-------|--|
| Points       | 18    | vs Jacksonville St. 11/05/19   |
| Rebounds     | 10    | vs Columbia 12/29/19   |
| Assists      | 8     | at Auburn 02/02/20   |
| Steals       | 7     | vs Saint Louis 11/17/19  |
| Blocks       | 3     | at Alabama 01/26/20  |
| FG Made      | 6     | vs Tennessee Tech 12/05/19   |
| FG Attempts  | 13    | vs Furman 11/22/19, vs UC Irvine 12/20/19                                |
| 3FG Made     | 3     | vs Jacksonville St. 11/05/19   |
| 3FG Attempts | 5     | at Texas A&M 02/13/20, vs Seton Hall 11/29/19                            |
| FT Made      | 6     | vs Samford 12/28/18  |
| FT Attempts  | 6     | vs Samford 12/28/18, vs Jacksonville St. 11/05/19, at Tennessee 02/23/20 |

**#5 YAUBRYON CHAMBERS****2020-21 Game-by-Game Statistics****#5 CHAMBERS, Yaubryon**

| Opponent       | Date       | GS | MIN   | Total  |       | 3-Pointers |      | Free throws |      | Rebounds |     |     |     |    |   |     |     |     |     |     |  |
|----------------|------------|----|-------|--------|-------|------------|------|-------------|------|----------|-----|-----|-----|----|---|-----|-----|-----|-----|-----|--|
|                |            |    |       | FG-FGA | PCT   | 3FG-3FGA   | PCT  | FT-FTA      | PCT  | OFF      | DEF | TOT | AVG | PF | A | T/O | BLK | STL | PTS | AVG |  |
| at Little Rock | 12/05/2020 | *  | 11:01 | 1-1    | 1.000 | 0-0        | .000 | 1-2         | .500 | 2        | 0   | 2   | 2.0 | 2  | 0 | 0   | 0   | 0   | 3   | 3.0 |  |
| ETSU           | 12/08/2020 | *  | 25:59 | 1-2    | .500  | 0-0        | .000 | 0-0         | .000 | 4        | 5   | 9   | 5.5 | 3  | 0 | 2   | 3   | 1   | 2   | 2.5 |  |
| at Chattanooga | 12/13/2020 | *  | 22:53 | 4-9    | .444  | 0-0        | .000 | 1-2         | .500 | 6        | 0   | 6   | 5.7 | 4  | 0 | 4   | 0   | 0   | 9   | 4.7 |  |
| VCU            | 12/17/2020 | *  | 24:54 | 2-2    | 1.000 | 0-0        | .000 | 0-0         | .000 | 2        | 3   | 5   | 5.5 | 3  | 1 | 1   | 2   | 0   | 4   | 4.5 |  |
| Totals         |            | 4  | 84:46 | 8-14   | .571  | 0-0        | .000 | 2-4         | .500 | 14       | 8   | 22  | 5.5 | 12 | 1 | 7   | 5   | 1   | 18  | 4.5 |  |

**Player Averages**

| Games Played | Minutes/game | Points/game | FG Pct | 3FG Pct | FT Pct | Rebounds/game | Assists/game | Turnovers/game | Assist/Turnover ratio | Steals/game | Blocks/game |
|--------------|--------------|-------------|--------|---------|--------|---------------|--------------|----------------|-----------------------|-------------|-------------|
| 4            | 21.2         | 4.5         | 57.1   | 0.0     | 50.0   | 5.5           | 0.3          | 1.8            | 0.1                   | 0.3         | 1.3         |

**Career Statistics/Career Highs****CHAMBERS, Yaubryon**

|              |       |             |                 | Field Goals  |             | 3-Point    |             | F-Throws   |             | Rebounds  |           |           |            | Scoring     |          |           |          |          |           |            |
|--------------|-------|-------------|-----------------|--------------|-------------|------------|-------------|------------|-------------|-----------|-----------|-----------|------------|-------------|----------|-----------|----------|----------|-----------|------------|
| SEASON       | TEAM  | GP-GS       | MIN/AVG         | FG-FGA       | FG%         | 3FG-FGA    | 3FG%        | FT-FTA     | FT%         | OFF       | DEF       | TOT       | AVG        | PF-FO       | AST      | TO        | BLK      | STL      | PTS       | AVG        |
| 2019-20      | Vandy | 13-0        | 88/6.8          | 12-27        | .444        | 0-0        | .000        | 3-5        | .600        | 5         | 15        | 20        | 1.5        | 21-0        | 2        | 5         | 1        | 4        | 27        | 2.1        |
| 2020-21      | Vandy | 4-4         | 85/21.2         | 8-14         | .571        | 0-0        | .000        | 2-4        | .500        | 14        | 8         | 22        | 5.5        | 12-0        | 1        | 7         | 5        | 1        | 18        | 4.5        |
| <b>TOTAL</b> |       | <b>17-4</b> | <b>173/10.2</b> | <b>20-41</b> | <b>.488</b> | <b>0-0</b> | <b>.000</b> | <b>5-9</b> | <b>.556</b> | <b>19</b> | <b>23</b> | <b>42</b> | <b>2.5</b> | <b>33-0</b> | <b>3</b> | <b>12</b> | <b>6</b> | <b>5</b> | <b>45</b> | <b>2.6</b> |

**Single Game Highs**

| Statistic   | Value |  |
|-------------|-------|--|
| Points      | 9     | at Chattanooga 12/13/20  |
| Rebounds    | 9     | vs ETSU 12/08/20   |
| Assists     | 1     | vs Furman 11/22/19, at Tennessee St. 11/25/19, vs VCU 12/17/20 |
| Steals      | 1     | 5 times  |
| Blocks      | 3     | vs ETSU 12/08/20   |
| FG Made     | 4     | at Chattanooga 12/13/20  |
| FG Attempts | 9     | at Chattanooga 12/13/20  |
| FT Made     | 2     | vs Ole Miss 02/09/20   |
| FT Attempts | 2     | 4 times  |



## #12 DEMI WASHINGTON

### 2020-21 Game-by-Game Statistics

#### #12 WASHINGTON, Demi

| Opponent          | Date       | GS        | MIN           | Total FG-FGA  | PCT         | 3-Pointers 3FG-3FGA | PCT         | Free throws FT-FTA | PCT         | Rebounds OFF DEF TOT AVG | PF        | A         | T/O       | BLK      | STL       | PTS        | AVG        |
|-------------------|------------|-----------|---------------|---------------|-------------|---------------------|-------------|--------------------|-------------|--------------------------|-----------|-----------|-----------|----------|-----------|------------|------------|
| Jacksonville St.  | 11/05/2019 |           | 20:32         | 3-4           | .750        | 0-0                 | .000        | 2-3                | .667        | 0 0 0 0.0                | 4         | 1         | 0         | 0        | 0         | 8          | 8.0        |
| Radford           | 11/08/2019 |           | 04:43         | 0-0           | .000        | 0-0                 | .000        | 0-0                | .000        | 0 0 0 0.0                | 2         | 0         | 0         | 0        | 0         | 0          | 4.0        |
| Saint Louis       | 11/17/2019 |           | 12:37         | 1-5           | .200        | 0-0                 | .000        | 1-2                | .500        | 0 2 2 0.7                | 1         | 0         | 0         | 0        | 2         | 3          | 3.7        |
| Furman            | 11/22/2019 |           | 10:48         | 1-2           | .500        | 0-0                 | .000        | 0-0                | .000        | 0 2 2 1.0                | 3         | 0         | 2         | 0        | 0         | 2          | 3.3        |
| at Tennessee St.  | 11/25/2019 |           | 14:00         | 4-4           | 1.000       | 0-0                 | .000        | 0-0                | .000        | 0 2 2 1.2                | 1         | 3         | 2         | 0        | 0         | 8          | 4.2        |
| vs Rutgers        | 11/28/2019 |           | 05:54         | 1-2           | .500        | 0-0                 | .000        | 0-0                | .000        | 1 0 1 1.2                | 2         | 0         | 0         | 0        | 1         | 2          | 3.8        |
| vs Seton Hall     | 11/29/2019 |           | 14:12         | 2-2           | 1.000       | 0-0                 | .000        | 0-0                | .000        | 1 1 2 1.3                | 2         | 1         | 1         | 0        | 0         | 4          | 3.9        |
| Tennessee Tech    | 12/05/2019 |           | 04:28         | 0-1           | .000        | 0-1                 | .000        | 0-0                | .000        | 0 0 0 1.1                | 0         | 0         | 0         | 0        | 0         | 0          | 3.4        |
| Eastern Ky.       | 12/15/2019 | *         | 08:31         | 0-2           | .000        | 0-0                 | .000        | 0-0                | .000        | 0 1 1 1.1                | 2         | 0         | 0         | 0        | 0         | 0          | 3.0        |
| vs UC Irvine      | 12/20/2019 | *         | 08:04         | 0-3           | .000        | 0-0                 | .000        | 0-0                | .000        | 0 0 0 1.0                | 3         | 0         | 1         | 0        | 0         | 0          | 2.7        |
| at Washington     | 12/21/2019 | *         | 17:12         | 2-3           | .667        | 0-0                 | .000        | 0-0                | .000        | 1 3 4 1.3                | 3         | 1         | 2         | 1        | 1         | 4          | 2.8        |
| Columbia          | 12/29/2019 | *         | 33:51         | 4-8           | .500        | 0-0                 | .000        | 0-0                | .000        | 2 2 4 1.5                | 3         | 1         | 3         | 1        | 0         | 8          | 3.3        |
| Auburn            | 01/02/2020 | *         | 35:18         | 7-14          | .500        | 0-0                 | .000        | 3-3                | 1.000       | 1 1 2 1.5                | 3         | 0         | 5         | 0        | 1         | 17         | 4.3        |
| at Florida        | 01/05/2020 | *         | 17:31         | 1-2           | .500        | 0-0                 | .000        | 0-0                | .000        | 0 1 1 1.5                | 1         | 1         | 0         | 0        | 1         | 2          | 4.1        |
| at Georgia        | 01/09/2020 | *         | 11:43         | 0-1           | .000        | 0-0                 | .000        | 0-0                | .000        | 0 1 1 1.5                | 0         | 1         | 0         | 0        | 1         | 0          | 3.9        |
| South Carolina    | 01/12/2020 | *         | 20:07         | 3-4           | .750        | 0-0                 | .000        | 1-2                | .500        | 0 0 0 1.4                | 2         | 1         | 0         | 0        | 0         | 7          | 4.1        |
| Arkansas          | 01/19/2020 | *         | 27:44         | 3-13          | .231        | 0-0                 | .000        | 0-0                | .000        | 0 3 3 1.5                | 2         | 2         | 2         | 1        | 0         | 6          | 4.2        |
| Mississippi St.   | 01/23/2020 | *         | 09:58         | 0-0           | .000        | 0-0                 | .000        | 0-0                | .000        | 1 0 1 1.4                | 0         | 0         | 1         | 0        | 0         | 0          | 3.9        |
| at Alabama        | 01/26/2020 | *         | 20:21         | 2-8           | .250        | 0-0                 | .000        | 3-4                | .750        | 2 0 2 1.5                | 3         | 0         | 1         | 0        | 0         | 7          | 4.1        |
| Tennessee         | 01/30/2020 |           | 03:18         | 0-1           | .000        | 0-0                 | .000        | 0-0                | .000        | 0 0 0 1.4                | 0         | 0         | 0         | 0        | 0         | 0          | 3.9        |
| at Auburn         | 02/02/2020 |           | 06:12         | 0-1           | .000        | 0-1                 | .000        | 0-0                | .000        | 0 0 0 1.3                | 1         | 0         | 1         | 0        | 1         | 0          | 3.7        |
| Ole Miss          | 02/09/2020 |           | 26:08         | 4-9           | .444        | 0-0                 | .000        | 2-2                | 1.000       | 1 3 4 1.5                | 3         | 0         | 1         | 0        | 2         | 10         | 4.0        |
| at Texas A&M      | 02/13/2020 |           | 12:41         | 2-4           | .500        | 0-0                 | .000        | 0-0                | .000        | 0 0 0 1.4                | 1         | 0         | 1         | 0        | 0         | 4          | 4.0        |
| at South Carolina | 02/17/2020 |           | 30:00         | 1-10          | .100        | 0-0                 | .000        | 2-2                | 1.000       | 2 2 4 1.5                | 3         | 0         | 1         | 0        | 2         | 4          | 4.0        |
| Missouri          | 02/20/2020 |           | 26:13         | 2-9           | .222        | 0-0                 | .000        | 0-0                | .000        | 1 1 2 1.5                | 4         | 0         | 0         | 0        | 0         | 4          | 4.0        |
| at Tennessee      | 02/23/2020 |           | 06:09         | 0-1           | .000        | 0-0                 | .000        | 0-0                | .000        | 1 1 2 1.5                | 2         | 0         | 1         | 0        | 0         | 0          | 3.8        |
| at LSU            | 02/27/2020 |           | 14:58         | 2-5           | .400        | 0-0                 | .000        | 0-0                | .000        | 0 0 0 1.5                | 1         | 1         | 1         | 0        | 0         | 4          | 3.9        |
| Kentucky          | 03/01/2020 |           | 05:58         | 0-0           | .000        | 0-0                 | .000        | 0-0                | .000        | 0 0 0 1.4                | 3         | 0         | 0         | 0        | 0         | 0          | 3.7        |
| vs Auburn         | 03/04/2020 |           | 21:47         | 3-6           | .500        | 0-0                 | .000        | 0-0                | .000        | 0 0 0 1.4                | 2         | 0         | 5         | 0        | 2         | 6          | 3.8        |
| <b>Totals</b>     |            | <b>11</b> | <b>450:58</b> | <b>48-124</b> | <b>.387</b> | <b>0-2</b>          | <b>.000</b> | <b>14-18</b>       | <b>.778</b> | <b>14 26 40 1.4</b>      | <b>57</b> | <b>13</b> | <b>31</b> | <b>3</b> | <b>14</b> | <b>110</b> | <b>3.8</b> |

#### Player Averages

| Games Played | Minutes/game | Points/game | FG Pct | 3FG Pct | FT Pct | Rebounds/game | Assists/game | Turnovers/game | Assist/Turnover ratio | Steals/game | Blocks/game |
|--------------|--------------|-------------|--------|---------|--------|---------------|--------------|----------------|-----------------------|-------------|-------------|
| 29           | 15.6         | 3.8         | 38.7   | 0.0     | 77.8   | 1.4           | 0.4          | 1.1            | 0.4                   | 0.5         | 0.1         |

### Career Statistics/Career Highs

#### WASHINGTON, Demi

|         |       |       |          | Field Goals |      | 3-Point |      | F-Throws |      | Rebounds |     |     |     |       |     |    |     | Scoring |     |     |
|---------|-------|-------|----------|-------------|------|---------|------|----------|------|----------|-----|-----|-----|-------|-----|----|-----|---------|-----|-----|
| SEASON  | TEAM  | GP-GS | MIN/AVG  | FG-FGA      | FG%  | 3FG-FGA | 3FG% | FT-FTA   | FT%  | OFF      | DEF | TOT | AVG | PF-FO | AST | TO | BLK | STL     | PTS | AVG |
| 2019-20 | Vandy | 29-11 | 451/15.6 | 48-124      | .387 | 0-2     | .000 | 14-18    | .778 | 14       | 26  | 40  | 1.4 | 57-0  | 13  | 31 | 3   | 14      | 110 | 3.8 |
| TOTAL   |       | 29-11 | 451/15.6 | 48-124      | .387 | 0-2     | .000 | 14-18    | .778 | 14       | 26  | 40  | 1.4 | 57-0  | 13  | 31 | 3   | 14      | 110 | 3.8 |

#### Single Game Highs

| Statistic    | Value  |
|--------------|--|
| Points       | 17 vs Auburn 01/02/20  |
| Rebounds     | 4 4 times  |
| Assists      | 3 at Tennessee St. 11/25/19  |
| Steals       | 2 4 times  |
| Blocks       | 1 at Washington 12/21/19, vs Columbia 12/29/19, vs Arkansas 01/19/20 |
| FG Made      | 7 vs Auburn 01/02/20   |
| FG Attempts  | 14 vs Auburn 01/02/20  |
| 3FG Attempts | 1 at Auburn 02/02/20, vs Tennessee Tech 12/05/19                     |
| FT Made      | 3 at Alabama 01/26/20, vs Auburn 01/02/20                            |
| FT Attempts  | 4 at Alabama 01/26/20  |

**#15 BRINAE ALEXANDER****2020-21 Game-by-Game Statistics****#15 ALEXANDER, Brinae**

| Opponent       | Date       | GS       | MIN           | Total        |             | 3-Pointers  |             | Free throws  |             | Rebounds |           |           |            | PF        |           | T/O       | BLK      | STL      | PTS       | AVG         |
|----------------|------------|----------|---------------|--------------|-------------|-------------|-------------|--------------|-------------|----------|-----------|-----------|------------|-----------|-----------|-----------|----------|----------|-----------|-------------|
|                |            |          |               | FG-FGA       | PCT         | 3FG-3FGA    | PCT         | FT-FTA       | PCT         | OFF      | DEF       | TOT       | AVG        |           |           |           |          |          |           |             |
| at Little Rock | 12/05/2020 | *        | 32:08         | 2-12         | .167        | 1-5         | .200        | 0-0          | .000        | 1        | 5         | 6         | 6.0        | 2         | 3         | 5         | 0        | 1        | 5         | 5.0         |
| ETSU           | 12/08/2020 | *        | 33:33         | 3-14         | .214        | 2-9         | .222        | 3-4          | .750        | 3        | 2         | 5         | 5.5        | 4         | 2         | 4         | 1        | 1        | 11        | 8.0         |
| at Chattanooga | 12/13/2020 | *        | 36:19         | 5-18         | .278        | 2-9         | .222        | 2-2          | 1.000       | 1        | 1         | 2         | 4.3        | 2         | 1         | 2         | 0        | 0        | 14        | 10.0        |
| VCU            | 12/17/2020 | *        | 30:21         | 7-16         | .438        | 1-4         | .250        | 5-7          | .714        | 3        | 6         | 9         | 5.5        | 3         | 4         | 3         | 0        | 1        | 20        | 12.5        |
| <b>Totals</b>  |            | <b>4</b> | <b>132:20</b> | <b>17-60</b> | <b>.283</b> | <b>6-27</b> | <b>.222</b> | <b>10-13</b> | <b>.769</b> | <b>8</b> | <b>14</b> | <b>22</b> | <b>5.5</b> | <b>11</b> | <b>10</b> | <b>14</b> | <b>1</b> | <b>3</b> | <b>50</b> | <b>12.5</b> |

**Player Averages**

| Games Played | Minutes/game | Points/game | FG Pct | 3FG Pct | FT Pct | Rebounds/game | Assists/game | Turnovers/game | Assist/Turnover ratio | Steals/game | Blocks/game |
|--------------|--------------|-------------|--------|---------|--------|---------------|--------------|----------------|-----------------------|-------------|-------------|
| 4            | 33.1         | 12.5        | 28.3   | 22.2    | 76.9   | 5.5           | 2.5          | 3.5            | 0.7                   | 0.8         | 0.3         |

**Career Statistics/Career Highs****ALEXANDER, Brinae**

|              |       |              |                 | Field Goals    |             | 3-Point       |             | F-Throws     |             | Rebounds  |           |            |            | Scoring     |           |           |          |           |            |             |
|--------------|-------|--------------|-----------------|----------------|-------------|---------------|-------------|--------------|-------------|-----------|-----------|------------|------------|-------------|-----------|-----------|----------|-----------|------------|-------------|
| SEASON       | TEAM  | GP-GS        | MIN/AVG         | FG-FGA         | FG%         | 3FG-FGA       | 3FG%        | FT-FTA       | FT%         | OFF       | DEF       | TOT        | AVG        | PF-FO       | AST       | TO        | BLK      | STL       | PTS        | AVG         |
| 2018-19      | Vandy | 21-10        | 500/23.8        | 68-169         | .402        | 29-84         | .345        | 37-57        | .649        | 32        | 51        | 83         | 4.0        | 57-2        | 30        | 35        | 2        | 15        | 202        | 9.6         |
| 2019-20      | Vandy | 7-7          | 154/22.0        | 38-76          | .500        | 12-33         | .364        | 6-8          | .750        | 10        | 13        | 23         | 3.3        | 11-0        | 5         | 12        | 1        | 10        | 94         | 13.4        |
| 2020-21      | Vandy | 4-4          | 132/33.1        | 17-60          | .283        | 6-27          | .222        | 10-13        | .769        | 8         | 14        | 22         | 5.5        | 11-0        | 10        | 14        | 1        | 3         | 50         | 12.5        |
| <b>TOTAL</b> |       | <b>32-21</b> | <b>786/24.6</b> | <b>123-305</b> | <b>.403</b> | <b>47-144</b> | <b>.326</b> | <b>53-78</b> | <b>.679</b> | <b>50</b> | <b>78</b> | <b>128</b> | <b>4.0</b> | <b>79-2</b> | <b>45</b> | <b>61</b> | <b>4</b> | <b>28</b> | <b>346</b> | <b>10.8</b> |

**Single Game Highs**

| Statistic    | Value |   |
|--------------|-------|---|
| Points       | 24    | at Texas A&M 01/31/19   |
| Rebounds     | 9     | vs VCU 12/17/20   |
| Assists      | 4     | vs Alabama 02/21/19, vs Presbyterian 11/25/18, vs VCU 12/17/20                |
| Steals       | 4     | vs Jacksonville St. 11/05/19  |
| Blocks       | 1     | 4 times   |
| FG Made      | 9     | vs Presbyterian 11/25/18, at Texas A&M 01/31/19, vs Jacksonville St. 11/05/19 |
| FG Attempts  | 19    | at Texas A&M 01/31/19   |
| 3FG Made     | 4     | at Texas A&M 01/31/19   |
| 3FG Attempts | 9     | vs UConn 11/17/18, vs ETSU 12/08/20, at Chattanooga 12/13/20                  |
| FT Made      | 7     | vs Tennessee St. 11/21/18   |
| FT Attempts  | 8     | vs Austin Peay 11/12/18, vs Tennessee St. 11/21/18                            |

## #22 BRYLEE BARTRAM

### 2020-21 Game-by-Game Statistics

#### #22 BARTRAM, Brylee

| Opponent       | Date       | GS       | MIN          | Total        |             | 3-Pointers   |             | Free throws |             | Rebounds |          |          |            | PF       |          | T/O      | BLK      | STL      | PTS       | AVG        |
|----------------|------------|----------|--------------|--------------|-------------|--------------|-------------|-------------|-------------|----------|----------|----------|------------|----------|----------|----------|----------|----------|-----------|------------|
|                |            |          |              | FG-FGA       | PCT         | 3FG-3FGA     | PCT         | FT-FTA      | PCT         | OFF      | DEF      | TOT      | AVG        |          |          |          |          |          |           |            |
| at Little Rock | 12/05/2020 |          | 17:59        | 1-7          | .143        | 1-7          | .143        | 0-0         | .000        | 1        | 2        | 3        | 3.0        | 0        | 0        | 1        | 0        | 0        | 3         | 3.0        |
| ETSU           | 12/08/2020 |          | 20:28        | 2-10         | .200        | 2-10         | .200        | 0-0         | .000        | 1        | 0        | 1        | 2.0        | 3        | 1        | 2        | 0        | 2        | 6         | 4.5        |
| at Chattanooga | 12/13/2020 |          | 24:21        | 2-7          | .286        | 2-5          | .400        | 0-0         | .000        | 0        | 1        | 1        | 1.7        | 0        | 1        | 1        | 0        | 1        | 6         | 5.0        |
| VCU            | 12/17/2020 |          | 32:09        | 6-10         | .600        | 6-10         | .600        | 0-0         | .000        | 0        | 2        | 2        | 1.8        | 0        | 0        | 1        | 0        | 0        | 18        | 8.3        |
| <b>Totals</b>  |            | <b>0</b> | <b>94:57</b> | <b>11-34</b> | <b>.324</b> | <b>11-32</b> | <b>.344</b> | <b>0-0</b>  | <b>.000</b> | <b>2</b> | <b>5</b> | <b>7</b> | <b>1.8</b> | <b>3</b> | <b>2</b> | <b>5</b> | <b>0</b> | <b>3</b> | <b>33</b> | <b>8.3</b> |

#### Player Averages

| Games Played | Minutes/game | Points/game | FG Pct | 3FG Pct | FT Pct | Rebounds/game | Assists/game | Turnovers/game | Assist/Turnover ratio | Steals/game | Blocks/game |
|--------------|--------------|-------------|--------|---------|--------|---------------|--------------|----------------|-----------------------|-------------|-------------|
| 4            | 23.7         | 8.3         | 32.4   | 34.4    | 0.0    | 1.8           | 0.5          | 1.3            | 0.4                   | 0.8         | 0.0         |

### Career Statistics/Career Highs

#### BARTRAM, Brylee

|                 |       |       |          | Field Goals |      | 3-Point |      | F-Throws |       | Rebounds |     |     |     |       |     |    |     |     | Scoring |     |
|-----------------|-------|-------|----------|-------------|------|---------|------|----------|-------|----------|-----|-----|-----|-------|-----|----|-----|-----|---------|-----|
| SEASON          | TEAM  | GP-GS | MIN/AVG  | FG-FGA      | FG%  | 3FG-FGA | 3FG% | FT-FTA   | FT%   | OFF      | DEF | TOT | AVG | PF-FO | AST | TO | BLK | STL | PTS     | AVG |
| 2019-20         | UF    | 29-0  | 428/14.7 | 40-126      | .317 | 39-117  | .333 | 4-4      | 1.000 | 3        | 15  | 18  | 0.6 | 10-0  | 21  | 17 | 0   | 6   | 123     | 4.2 |
| 2020-21         | Vandy | 4-0   | 95/23.7  | 11-34       | .324 | 11-32   | .344 | 0-0      | .000  | 2        | 5   | 7   | 1.8 | 3-0   | 2   | 5  | 0   | 3   | 33      | 8.3 |
| TOTAL FOR Vandy |       | 4-0   | 95/23.7  | 11-34       | .324 | 11-32   | .344 | 0-0      | .000  | 2        | 5   | 7   | 1.8 | 3-0   | 2   | 5  | 0   | 3   | 33      | 8.3 |
| TOTAL           |       | 33-0  | 523/15.8 | 51-160      | .319 | 50-149  | .336 | 4-4      | 1.000 | 5        | 20  | 25  | 0.8 | 13-0  | 23  | 22 | 0   | 9   | 156     | 4.7 |

#### Single Game Highs

| Statistic    | Value |  |
|--------------|-------|--|
| Points       | 18    | at Missouri 02/16/20, vs VCU 12/17/20      |
| Rebounds     | 4     | vs Samford 11/16/19                        |
| Assists      | 3     | vs Samford 11/16/19                        |
| Steals       | 4     | vs Samford 11/16/19                        |
| FG Made      | 6     | at Missouri 02/16/20, vs VCU 12/17/20      |
| FG Attempts  | 12    | vs Longwood 11/10/19                       |
| 3FG Made     | 6     | at Missouri 02/16/20, vs VCU 12/17/20      |
| 3FG Attempts | 11    | vs Longwood 11/10/19, at Missouri 02/16/20 |
| FT Made      | 2     | vs Longwood 11/10/19, vs Samford 11/16/19  |
| FT Attempts  | 2     | vs Longwood 11/10/19, vs Samford 11/16/19  |

**#23 KOI LOVE****2020-21 Game-by-Game Statistics****#23 LOVE, Koi**

| Opponent       | Date       | GS       | MIN           | Total        |             | 3-Pointers  |             | Free throws  |             | Rebounds  |           |           |             | PF        | A        | T/O       | BLK      | STL       | PTS       | AVG         |
|----------------|------------|----------|---------------|--------------|-------------|-------------|-------------|--------------|-------------|-----------|-----------|-----------|-------------|-----------|----------|-----------|----------|-----------|-----------|-------------|
|                |            |          |               | FG-FGA       | PCT         | 3FG-3FGA    | PCT         | FT-FTA       | PCT         | OFF       | DEF       | TOT       | AVG         |           |          |           |          |           |           |             |
| at Little Rock | 12/05/2020 | *        | 32:19         | 9-18         | .500        | 1-5         | .200        | 5-6          | .833        | 4         | 6         | 10        | 10.0        | 4         | 2        | 8         | 1        | 1         | 24        | 24.0        |
| ETSU           | 12/08/2020 | *        | 34:12         | 7-14         | .500        | 0-2         | .000        | 5-8          | .625        | 3         | 9         | 12        | 11.0        | 3         | 1        | 2         | 3        | 4         | 19        | 21.5        |
| at Chattanooga | 12/13/2020 | *        | 37:23         | 9-19         | .474        | 0-0         | .000        | 3-4          | .750        | 3         | 13        | 16        | 12.7        | 5         | 3        | 1         | 2        | 3         | 21        | 21.3        |
| VCU            | 12/17/2020 | *        | 33:42         | 12-15        | .800        | 1-3         | .333        | 4-6          | .667        | 2         | 2         | 4         | 10.5        | 4         | 0        | 3         | 0        | 2         | 29        | 23.3        |
| <b>Totals</b>  |            | <b>4</b> | <b>137:36</b> | <b>37-66</b> | <b>.561</b> | <b>2-10</b> | <b>.200</b> | <b>17-24</b> | <b>.708</b> | <b>12</b> | <b>30</b> | <b>42</b> | <b>10.5</b> | <b>16</b> | <b>6</b> | <b>14</b> | <b>6</b> | <b>10</b> | <b>93</b> | <b>23.3</b> |

**Player Averages**

| Games Played | Minutes/game | Points/game | FG Pct | 3FG Pct | FT Pct | Rebounds/game | Assists/game | Turnovers/game | Assist/Turnover ratio | Steals/game | Blocks/game |
|--------------|--------------|-------------|--------|---------|--------|---------------|--------------|----------------|-----------------------|-------------|-------------|
| 4            | 34.4         | 23.3        | 56.1   | 20.0    | 70.8   | 10.5          | 1.5          | 3.5            | 0.4                   | 2.5         | 1.5         |

**Career Statistics/Career Highs****LOVE, Koi**

|         |       |       |          | Field Goals |      | 3-Point |      | F-Throws |      | Rebounds |     |     |      |       |     |     |     |     |     | Scoring |  |
|---------|-------|-------|----------|-------------|------|---------|------|----------|------|----------|-----|-----|------|-------|-----|-----|-----|-----|-----|---------|--|
| SEASON  | TEAM  | GP-GS | MIN/AVG  | FG-FGA      | FG%  | 3FG-FGA | 3FG% | FT-FTA   | FT%  | OFF      | DEF | TOT | AVG  | PF-FO | AST | TO  | BLK | STL | PTS | AVG     |  |
| 2019-20 | Vandy | 29-13 | 743/25.6 | 158-343     | .461 | 4-21    | .190 | 76-117   | .650 | 67       | 114 | 181 | 6.2  | 73-2  | 56  | 133 | 18  | 32  | 396 | 13.7    |  |
| 2020-21 | Vandy | 4-4   | 138/34.4 | 37-66       | .561 | 2-10    | .200 | 17-24    | .708 | 12       | 30  | 42  | 10.5 | 16-1  | 6   | 14  | 6   | 10  | 93  | 23.3    |  |
| TOTAL   |       | 33-17 | 881/26.7 | 195-409     | .477 | 6-31    | .194 | 93-141   | .660 | 79       | 144 | 223 | 6.8  | 89-3  | 62  | 147 | 24  | 42  | 489 | 14.8    |  |

**Single Game Highs**

| Statistic    | Value |   |
|--------------|-------|---|
| Points       | 29    | vs VCU 12/17/20                               |
| Rebounds     | 16    | at Chattanooga 12/13/20                       |
| Assists      | 7     | at Tennessee St. 11/25/19, vs Auburn 03/04/20 |
| Steals       | 4     | at Texas A&M 02/13/20, vs ETSU 12/08/20       |
| Blocks       | 3     | vs ETSU 12/08/20                              |
| FG Made      | 12    | vs VCU 12/17/20                               |
| FG Attempts  | 21    | at Auburn 02/02/20                            |
| 3FG Made     | 2     | vs Mississippi St. 01/23/20                   |
| 3FG Attempts | 5     | at Little Rock 12/05/20                       |
| FT Made      | 8     | vs Auburn 03/04/20                            |
| FT Attempts  | 10    | at Georgia 01/09/20                           |

## #24 AUTUMN NEWBY

### 2019-20 Game-by-Game Statistics

#### #24 NEWBY, Autumn

| Opponent          | Date       | GS        | MIN           | Total         |             | 3-Pointers |             | Free throws  |             | Rebounds  |            |            |            | PF        | A         | T/O       | BLK      | STL       | PTS        | AVG        |
|-------------------|------------|-----------|---------------|---------------|-------------|------------|-------------|--------------|-------------|-----------|------------|------------|------------|-----------|-----------|-----------|----------|-----------|------------|------------|
|                   |            |           |               | FG-FGA        | PCT         | 3FG-3FGA   | PCT         | FT-FTA       | PCT         | OFF       | DEF        | TOT        | AVG        |           |           |           |          |           |            |            |
| Jacksonville St.  | 11/05/2019 | *         | 25:20         | 1-4           | .250        | 0-0        | .000        | 3-4          | .750        | 0         | 13         | 13         | 13.0       | 3         | 1         | 7         | 0        | 2         | 5          | 5.0        |
| Radford           | 11/08/2019 | *         | 30:38         | 3-4           | .750        | 0-0        | .000        | 2-3          | .667        | 2         | 7          | 9          | 11.0       | 2         | 3         | 2         | 0        | 1         | 8          | 6.5        |
| UConn             | 11/13/2019 | *         | 24:41         | 1-3           | .333        | 0-0        | .000        | 0-0          | .000        | 2         | 3          | 5          | 9.0        | 1         | 1         | 3         | 0        | 1         | 2          | 5.0        |
| Saint Louis       | 11/17/2019 | *         | 36:23         | 2-5           | .400        | 0-0        | .000        | 0-0          | .000        | 5         | 8          | 13         | 10.0       | 2         | 3         | 0         | 1        | 2         | 4          | 4.8        |
| Furman            | 11/22/2019 | *         | 19:55         | 1-2           | .500        | 0-0        | .000        | 1-2          | .500        | 2         | 3          | 5          | 9.0        | 1         | 0         | 0         | 0        | 1         | 3          | 4.4        |
| at Tennessee St.  | 11/25/2019 | *         | 25:00         | 0-1           | .000        | 0-0        | .000        | 1-2          | .500        | 2         | 3          | 5          | 8.3        | 2         | 1         | 2         | 1        | 0         | 1          | 3.8        |
| vs Rutgers        | 11/28/2019 | *         | 30:51         | 2-6           | .333        | 0-0        | .000        | 1-2          | .500        | 3         | 5          | 8          | 8.3        | 3         | 1         | 3         | 0        | 1         | 5          | 4.0        |
| vs Seton Hall     | 11/29/2019 | *         | 24:54         | 1-5           | .200        | 0-0        | .000        | 0-0          | .000        | 0         | 4          | 4          | 7.8        | 3         | 1         | 3         | 0        | 0         | 2          | 3.8        |
| Tennessee Tech    | 12/05/2019 | *         | 36:23         | 2-7           | .286        | 0-0        | .000        | 4-6          | .667        | 1         | 6          | 7          | 7.7        | 3         | 6         | 0         | 0        | 3         | 8          | 4.2        |
| Eastern Ky.       | 12/15/2019 | *         | 31:20         | 3-7           | .429        | 0-0        | .000        | 1-1          | 1.000       | 2         | 4          | 6          | 7.5        | 3         | 3         | 2         | 0        | 1         | 7          | 4.5        |
| vs UC Irvine      | 12/20/2019 | *         | 16:16         | 2-5           | .400        | 0-0        | .000        | 1-1          | 1.000       | 1         | 0          | 1          | 6.9        | 3         | 2         | 1         | 0        | 1         | 5          | 4.5        |
| at Washington     | 12/21/2019 | *         | 28:11         | 1-6           | .167        | 0-0        | .000        | 1-2          | .500        | 1         | 7          | 8          | 7.0        | 3         | 1         | 0         | 1        | 1         | 3          | 4.4        |
| Columbia          | 12/29/2019 | *         | 33:13         | 1-1           | 1.000       | 0-0        | .000        | 3-4          | .750        | 3         | 7          | 10         | 7.2        | 2         | 2         | 1         | 0        | 4         | 5          | 4.5        |
| Auburn            | 01/02/2020 | *         | 33:58         | 5-6           | .833        | 0-0        | .000        | 1-3          | .333        | 2         | 4          | 6          | 7.1        | 4         | 3         | 3         | 1        | 1         | 11         | 4.9        |
| at Florida        | 01/05/2020 | *         | 28:40         | 3-4           | .750        | 0-0        | .000        | 0-0          | .000        | 1         | 6          | 7          | 7.1        | 4         | 0         | 2         | 0        | 0         | 6          | 5.0        |
| at Georgia        | 01/09/2020 | *         | 32:44         | 2-4           | .500        | 0-0        | .000        | 4-4          | 1.000       | 1         | 5          | 6          | 7.1        | 4         | 1         | 1         | 0        | 2         | 8          | 5.2        |
| South Carolina    | 01/12/2020 | *         | 22:27         | 1-2           | .500        | 0-0        | .000        | 3-4          | .750        | 4         | 4          | 8          | 7.1        | 4         | 1         | 3         | 0        | 0         | 5          | 5.2        |
| Tennessee         | 01/30/2020 | *         | 26:27         | 2-4           | .500        | 0-0        | .000        | 2-7          | .286        | 2         | 1          | 3          | 6.9        | 3         | 0         | 2         | 0        | 2         | 6          | 5.2        |
| at Auburn         | 02/02/2020 | *         | 31:49         | 0-0           | .000        | 0-0        | .000        | 1-2          | .500        | 1         | 3          | 4          | 6.7        | 3         | 1         | 4         | 0        | 4         | 1          | 5.0        |
| Ole Miss          | 02/09/2020 | *         | 27:16         | 1-4           | .250        | 0-0        | .000        | 0-1          | .000        | 4         | 7          | 11         | 7.0        | 3         | 1         | 2         | 0        | 0         | 2          | 4.9        |
| at Texas A&M      | 02/13/2020 | *         | 21:57         | 0-0           | .000        | 0-0        | .000        | 3-4          | .750        | 1         | 1          | 2          | 6.7        | 3         | 0         | 0         | 0        | 1         | 3          | 4.8        |
| at South Carolina | 02/17/2020 | *         | 25:00         | 3-9           | .333        | 0-0        | .000        | 1-2          | .500        | 5         | 3          | 8          | 6.8        | 2         | 1         | 0         | 0        | 1         | 7          | 4.9        |
| Missouri          | 02/20/2020 | *         | 25:58         | 1-2           | .500        | 0-0        | .000        | 2-5          | .400        | 2         | 3          | 5          | 6.7        | 3         | 2         | 3         | 0        | 2         | 4          | 4.8        |
| at Tennessee      | 02/23/2020 | *         | 08:52         | 0-0           | .000        | 0-0        | .000        | 2-4          | .500        | 0         | 0          | 0          | 6.4        | 5         | 1         | 2         | 0        | 0         | 2          | 4.7        |
| at LSU            | 02/27/2020 | *         | 31:44         | 3-5           | .600        | 0-0        | .000        | 4-4          | 1.000       | 2         | 3          | 5          | 6.4        | 2         | 1         | 2         | 1        | 4         | 10         | 4.9        |
| Kentucky          | 03/01/2020 | *         | 18:39         | 1-3           | .333        | 0-0        | .000        | 0-0          | .000        | 0         | 0          | 0          | 6.1        | 3         | 0         | 1         | 0        | 0         | 2          | 4.8        |
| vs Auburn         | 03/04/2020 | *         | 16:18         | 0-2           | .000        | 0-0        | .000        | 0-0          | .000        | 1         | 0          | 1          | 5.9        | 4         | 0         | 1         | 0        | 1         | 0          | 4.6        |
| <b>Totals</b>     |            | <b>27</b> | <b>714:55</b> | <b>42-101</b> | <b>.416</b> | <b>0-0</b> | <b>.000</b> | <b>41-67</b> | <b>.612</b> | <b>50</b> | <b>110</b> | <b>160</b> | <b>5.9</b> | <b>78</b> | <b>37</b> | <b>50</b> | <b>5</b> | <b>36</b> | <b>125</b> | <b>4.6</b> |

#### Player Averages

| Games Played | Minutes/game | Points/game | FG Pct | 3FG Pct | FT Pct | Rebounds/game | Assists/game | Turnovers/game | Assist/Turnover ratio | Steals/game | Blocks/game |
|--------------|--------------|-------------|--------|---------|--------|---------------|--------------|----------------|-----------------------|-------------|-------------|
| 27           | 26.5         | 4.6         | 41.6   | 0.0     | 61.2   | 5.9           | 1.4          | 1.9            | 0.7                   | 1.3         | 0.2         |

### Career Statistics/Career Highs

#### NEWBY, Autumn

| SEASON       | TEAM  | GP-GS        | MIN/AVG          | Field Goals    |             | 3-Point    |             | F-Throws       |             | Rebounds   |            |            |            | Scoring      |            |            |           |           |            |            |
|--------------|-------|--------------|------------------|----------------|-------------|------------|-------------|----------------|-------------|------------|------------|------------|------------|--------------|------------|------------|-----------|-----------|------------|------------|
|              |       |              |                  | FG-FGA         | FG%         | 3FG-3FGA   | 3FG%        | FT-FTA         | FT%         | OFF        | DEF        | TOT        | AVG        | PF-FO        | AST        | TO         | BLK       | STL       | PTS        | AVG        |
| 2017-18      | Vandy | 29-29        | 660/22.8         | 57-125         | .456        | 0-0        | .000        | 37-78          | .474        | 50         | 141        | 191        | 6.6        | 100-4        | 56         | 60         | 11        | 17        | 151        | 5.2        |
| 2018-19      | Vandy | 28-28        | 768/27.4         | 71-175         | .406        | 0-0        | .000        | 64-94          | .681        | 53         | 135        | 188        | 6.7        | 89-4         | 37         | 54         | 5         | 18        | 206        | 7.4        |
| 2019-20      | Vandy | 27-27        | 715/26.5         | 42-101         | .416        | 0-0        | .000        | 41-67          | .612        | 50         | 110        | 160        | 5.9        | 78-1         | 37         | 50         | 5         | 36        | 125        | 4.6        |
| <b>TOTAL</b> |       | <b>84-84</b> | <b>2142/25.5</b> | <b>170-401</b> | <b>.424</b> | <b>0-0</b> | <b>.000</b> | <b>142-239</b> | <b>.594</b> | <b>153</b> | <b>386</b> | <b>539</b> | <b>6.4</b> | <b>267-9</b> | <b>130</b> | <b>164</b> | <b>21</b> | <b>71</b> | <b>482</b> | <b>5.7</b> |

#### Single Game Highs

| Statistic   | Value |  |
|-------------|-------|--|
| Points      | 30    | vs North Ala. 11/06/18   |
| Rebounds    | 14    | vs Iowa St. 12/02/17   |
| Assists     | 6     | vs Tennessee Tech 12/05/19                                     |
| Steals      | 4     | at LSU 02/27/20, at Auburn 02/02/20, vs Columbia 12/29/19      |
| Blocks      | 2     | vs Iowa St. 12/02/17, at Tulane 11/17/17, vs Lipscomb 12/28/17 |
| FG Made     | 11    | vs North Ala. 11/06/18   |
| FG Attempts | 17    | vs North Ala. 11/06/18   |
| FT Made     | 9     | vs Samford 12/28/18  |
| FT Attempts | 12    | vs Austin Peay 11/12/18  |



**#25 KYNDALL GOLDEN****2019-20 Game-by-Game Statistics****#25 GOLDEN, Kyndall**

| Opponent         | Date       | GS       | MIN          | Total      |              | 3-Pointers |             | Free throws |              | Rebounds |          |          |            | PF       |          | A        | T/O      | BLK      | STL      | PTS        | AVG |
|------------------|------------|----------|--------------|------------|--------------|------------|-------------|-------------|--------------|----------|----------|----------|------------|----------|----------|----------|----------|----------|----------|------------|-----|
|                  |            |          |              | FG-FGA     | PCT          | 3FG-3FGA   | PCT         | FT-FTA      | PCT          | OFF      | DEF      | TOT      | AVG        |          |          |          |          |          |          |            |     |
| Jacksonville St. | 11/05/2019 |          | 12:13        | 0-0        | .000         | 0-0        | .000        | 0-0         | .000         | 1        | 1        | 2        | 2.0        | 2        | 0        | 0        | 2        | 0        | 0        | 0          | 0.0 |
| Radford          | 11/08/2019 |          | 04:10        | 1-1        | 1.000        | 0-0        | .000        | 1-1         | 1.000        | 0        | 0        | 0        | 1.0        | 2        | 0        | 1        | 1        | 0        | 3        | 1.5        |     |
| UConn            | 11/13/2019 |          | 08:51        | 0-0        | .000         | 0-0        | .000        | 0-0         | .000         | 1        | 2        | 3        | 1.7        | 1        | 0        | 0        | 1        | 1        | 0        | 1.0        |     |
| Saint Louis      | 11/17/2019 |          | 03:37        | 0-0        | .000         | 0-0        | .000        | 0-0         | .000         | 1        | 0        | 1        | 1.5        | 1        | 0        | 0        | 0        | 1        | 0        | 0.8        |     |
| Furman           | 11/22/2019 |          | 03:23        | 0-0        | .000         | 0-0        | .000        | 0-0         | .000         | 1        | 0        | 1        | 1.4        | 1        | 0        | 1        | 1        | 0        | 0        | 0.6        |     |
| <b>Totals</b>    |            | <b>0</b> | <b>32:14</b> | <b>1-1</b> | <b>1.000</b> | <b>0-0</b> | <b>.000</b> | <b>1-1</b>  | <b>1.000</b> | <b>4</b> | <b>3</b> | <b>7</b> | <b>1.4</b> | <b>7</b> | <b>0</b> | <b>2</b> | <b>5</b> | <b>2</b> | <b>3</b> | <b>0.6</b> |     |

**Player Averages**

| Games Played | Minutes/game | Points/game | FG Pct | 3FG Pct | FT Pct | Rebounds/game | Assists/game | Turnovers/game | Assist/Turnover ratio | Steals/game | Blocks/game |
|--------------|--------------|-------------|--------|---------|--------|---------------|--------------|----------------|-----------------------|-------------|-------------|
| 5            | 6.4          | 0.6         | 100.0  | 0.0     | 100.0  | 1.4           | 0.0          | 0.4            | 0.0                   | 0.4         | 1.0         |

**Career Statistics/Career Highs****GOLDEN, Kyndall**

|              |       |            |               | Field Goals |              | 3-Point    |             | F-Throws   |              | Rebounds |          |          |            | Scoring    |          |          |          |          |          |            |
|--------------|-------|------------|---------------|-------------|--------------|------------|-------------|------------|--------------|----------|----------|----------|------------|------------|----------|----------|----------|----------|----------|------------|
| SEASON       | TEAM  | GP-GS      | MIN/AVG       | FG-FGA      | FG%          | 3FG-FGA    | 3FG%        | FT-FTA     | FT%          | OFF      | DEF      | TOT      | AVG        | PF-FO      | AST      | TO       | BLK      | STL      | PTS      | AVG        |
| 2019-20      | Vandy | 5-0        | 32/6.4        | 1-1         | 1.000        | 0-0        | .000        | 1-1        | 1.000        | 4        | 3        | 7        | 1.4        | 7-0        | 0        | 2        | 5        | 2        | 3        | 0.6        |
| <b>TOTAL</b> |       | <b>5-0</b> | <b>32/6.4</b> | <b>1-1</b>  | <b>1.000</b> | <b>0-0</b> | <b>.000</b> | <b>1-1</b> | <b>1.000</b> | <b>4</b> | <b>3</b> | <b>7</b> | <b>1.4</b> | <b>7-0</b> | <b>0</b> | <b>2</b> | <b>5</b> | <b>2</b> | <b>3</b> | <b>0.6</b> |

**Single Game Highs**

| Statistic   | Value |  |
|-------------|-------|--|
| Points      | 3     | vs Radford 11/08/19                        |
| Rebounds    | 3     | vs UConn 11/13/19                          |
| Steals      | 1     | vs UConn 11/13/19, vs Saint Louis 11/17/19 |
| Blocks      | 2     | vs Jacksonville St. 11/05/19               |
| FG Made     | 1     | vs Radford 11/08/19                        |
| FG Attempts | 1     | vs Radford 11/08/19                        |
| FT Made     | 1     | vs Radford 11/08/19                        |
| FT Attempts | 1     | vs Radford 11/08/19                        |

## #33 KIARA PEARL

### 2019-20 Game-by-Game Statistics

#### #33 PEARL, Kiara

| Opponent          | Date       | GS       | MIN           | Total        |             | 3-Pointers   |             | Free throws |             | Rebounds |           |           |            | PF        | A        | T/O       | BLK      | STL      | PTS       | AVG        |
|-------------------|------------|----------|---------------|--------------|-------------|--------------|-------------|-------------|-------------|----------|-----------|-----------|------------|-----------|----------|-----------|----------|----------|-----------|------------|
|                   |            |          |               | FG-FGA       | PCT         | 3FG-3FGA     | PCT         | FT-FTA      | PCT         | OFF      | DEF       | TOT       | AVG        |           |          |           |          |          |           |            |
| Jacksonville St.  | 11/05/2019 |          | 03:21         | 1-1          | 1.000       | 0-0          | .000        | 0-0         | .000        | 0        | 0         | 0         | 0.0        | 0         | 0        | 0         | 0        | 0        | 2         | 2.0        |
| Radford           | 11/08/2019 |          | 02:19         | 0-1          | .000        | 0-0          | .000        | 0-0         | .000        | 0        | 0         | 0         | 0.0        | 1         | 0        | 0         | 0        | 0        | 0         | 1.0        |
| Furman            | 11/22/2019 |          | 08:16         | 1-2          | .500        | 1-2          | .500        | 0-0         | .000        | 0        | 3         | 3         | 1.0        | 1         | 0        | 0         | 0        | 1        | 3         | 1.7        |
| at Tennessee St.  | 11/25/2019 |          | 09:00         | 3-3          | 1.000       | 3-3          | 1.000       | 0-0         | .000        | 0        | 2         | 2         | 1.3        | 2         | 0        | 0         | 0        | 0        | 9         | 3.5        |
| vs Rutgers        | 11/28/2019 |          | 01:05         | 0-3          | .000        | 0-3          | .000        | 0-0         | .000        | 0        | 0         | 0         | 1.0        | 0         | 0        | 0         | 0        | 0        | 0         | 2.8        |
| vs Seton Hall     | 11/29/2019 |          | 09:36         | 1-3          | .333        | 1-2          | .500        | 0-0         | .000        | 0        | 1         | 1         | 1.0        | 1         | 0        | 0         | 0        | 1        | 3         | 2.8        |
| Tennessee Tech    | 12/05/2019 |          | 10:56         | 1-2          | .500        | 0-1          | .000        | 1-1         | 1.000       | 0        | 0         | 0         | 0.9        | 1         | 0        | 0         | 1        | 0        | 3         | 2.9        |
| Eastern Ky.       | 12/15/2019 |          | 07:35         | 1-2          | .500        | 1-1          | 1.000       | 0-0         | .000        | 0        | 0         | 0         | 0.8        | 1         | 0        | 1         | 0        | 0        | 3         | 2.9        |
| vs UC Irvine      | 12/20/2019 |          | 16:43         | 2-7          | .286        | 2-7          | .286        | 0-0         | .000        | 0        | 3         | 3         | 1.0        | 2         | 0        | 1         | 0        | 0        | 6         | 3.2        |
| at Washington     | 12/21/2019 |          | 08:28         | 1-1          | 1.000       | 1-1          | 1.000       | 1-2         | .500        | 0        | 0         | 0         | 0.9        | 0         | 0        | 0         | 0        | 1        | 4         | 3.3        |
| South Carolina    | 01/12/2020 |          | 11:37         | 3-10         | .300        | 1-4          | .250        | 1-1         | 1.000       | 1        | 0         | 1         | 0.9        | 0         | 0        | 0         | 0        | 2        | 8         | 3.7        |
| Arkansas          | 01/19/2020 |          | 17:09         | 4-9          | .444        | 1-4          | .250        | 1-2         | .500        | 1        | 0         | 1         | 0.9        | 0         | 1        | 0         | 0        | 0        | 10        | 4.3        |
| Mississippi St.   | 01/23/2020 |          | 22:01         | 3-8          | .375        | 2-5          | .400        | 0-0         | .000        | 0        | 1         | 1         | 0.9        | 2         | 0        | 2         | 0        | 0        | 8         | 4.5        |
| at Alabama        | 01/26/2020 |          | 29:04         | 3-9          | .333        | 3-7          | .429        | 2-2         | 1.000       | 0        | 4         | 4         | 1.1        | 4         | 0        | 4         | 1        | 0        | 11        | 5.0        |
| Tennessee         | 01/30/2020 |          | 20:24         | 5-15         | .333        | 3-13         | .231        | 0-0         | .000        | 0        | 2         | 2         | 1.2        | 1         | 0        | 0         | 0        | 1        | 13        | 5.5        |
| at Auburn         | 02/02/2020 |          | 04:16         | 0-2          | .000        | 0-2          | .000        | 0-0         | .000        | 0        | 1         | 1         | 1.2        | 2         | 0        | 0         | 0        | 0        | 0         | 5.2        |
| Ole Miss          | 02/09/2020 |          | 13:29         | 2-5          | .400        | 1-2          | .500        | 0-0         | .000        | 1        | 1         | 2         | 1.2        | 2         | 0        | 1         | 0        | 1        | 5         | 5.2        |
| at Texas A&M      | 02/13/2020 |          | 16:41         | 4-9          | .444        | 3-8          | .375        | 0-0         | .000        | 0        | 0         | 0         | 1.2        | 1         | 0        | 4         | 0        | 0        | 11        | 5.5        |
| at South Carolina | 02/17/2020 |          | 09:00         | 0-1          | .000        | 0-1          | .000        | 0-0         | .000        | 0        | 1         | 1         | 1.2        | 1         | 0        | 2         | 0        | 0        | 0         | 5.2        |
| Missouri          | 02/20/2020 |          | 01:39         | 0-1          | .000        | 0-1          | .000        | 0-0         | .000        | 0        | 0         | 0         | 1.1        | 0         | 0        | 0         | 0        | 0        | 0         | 5.0        |
| <b>Totals</b>     |            | <b>0</b> | <b>222:39</b> | <b>35-94</b> | <b>.372</b> | <b>23-67</b> | <b>.343</b> | <b>6-8</b>  | <b>.750</b> | <b>3</b> | <b>19</b> | <b>22</b> | <b>1.1</b> | <b>22</b> | <b>1</b> | <b>15</b> | <b>2</b> | <b>7</b> | <b>99</b> | <b>5.0</b> |

#### Player Averages

| Games Played | Minutes/game | Points/game | FG Pct | 3FG Pct | FT Pct | Rebounds/game | Assists/game | Turnovers/game | Assist/Turnover ratio | Steals/game | Blocks/game |
|--------------|--------------|-------------|--------|---------|--------|---------------|--------------|----------------|-----------------------|-------------|-------------|
| 20           | 11.1         | 5.0         | 37.2   | 34.3    | 75.0   | 1.1           | 0.1          | 0.8            | 0.1                   | 0.4         | 0.1         |

### Career Statistics/Career Highs

#### PEARL, Kiara

|              |       |             |                 | Field Goals  |             | 3-Point      |             | F-Throws   |             | Rebounds |           |           |            | Scoring     |          |           |          |          |           |            |
|--------------|-------|-------------|-----------------|--------------|-------------|--------------|-------------|------------|-------------|----------|-----------|-----------|------------|-------------|----------|-----------|----------|----------|-----------|------------|
| SEASON       | TEAM  | GP-GS       | MIN/AVG         | FG-FGA       | FG%         | 3FG-3FGA     | 3FG%        | FT-FTA     | FT%         | OFF      | DEF       | TOT       | AVG        | PF-FO       | AST      | TO        | BLK      | STL      | PTS       | AVG        |
| 2019-20      | Vandy | 20-0        | 223/11.1        | 35-94        | .372        | 23-67        | .343        | 6-8        | .750        | 3        | 19        | 22        | 1.1        | 22-0        | 1        | 15        | 2        | 7        | 99        | 5.0        |
| <b>TOTAL</b> |       | <b>20-0</b> | <b>223/11.1</b> | <b>35-94</b> | <b>.372</b> | <b>23-67</b> | <b>.343</b> | <b>6-8</b> | <b>.750</b> | <b>3</b> | <b>19</b> | <b>22</b> | <b>1.1</b> | <b>22-0</b> | <b>1</b> | <b>15</b> | <b>2</b> | <b>7</b> | <b>99</b> | <b>5.0</b> |

#### Single Game Highs

| Statistic    | Value |   |
|--------------|-------|---|
| Points       | 13    | vs Tennessee 01/30/20   |
| Rebounds     | 4     | at Alabama 01/26/20   |
| Assists      | 1     | vs Arkansas 01/19/20  |
| Steals       | 2     | vs South Carolina 01/12/20  |
| Blocks       | 1     | vs Tennessee Tech 12/05/19, at Alabama 01/26/20                   |
| FG Made      | 5     | vs Tennessee 01/30/20   |
| FG Attempts  | 15    | vs Tennessee 01/30/20   |
| 3FG Made     | 3     | 4 times   |
| 3FG Attempts | 13    | vs Tennessee 01/30/20   |
| FT Made      | 2     | at Alabama 01/26/20   |
| FT Attempts  | 2     | at Alabama 01/26/20, at Washington 12/21/19, vs Arkansas 01/19/20 |

**#44 EMILY BOWMAN****2020-21 Game-by-Game Statistics****#44 BOWMAN, Emily**

| Opponent       | Date       | GS       | MIN          | Total      |             | 3-Pointers |             | Free throws |             | Rebounds |          |           |            | PF        | A        | T/O      | BLK      | STL      | PTS      | AVG        |
|----------------|------------|----------|--------------|------------|-------------|------------|-------------|-------------|-------------|----------|----------|-----------|------------|-----------|----------|----------|----------|----------|----------|------------|
|                |            |          |              | FG-FGA     | PCT         | 3FG-3FGA   | PCT         | FT-FTA      | PCT         | OFF      | DEF      | TOT       | AVG        |           |          |          |          |          |          |            |
| at Little Rock | 12/05/2020 |          | 24:33        | 3-3        | 1.000       | 0-0        | .000        | 0-1         | .000        | 3        | 4        | 7         | 7.0        | 2         | 0        | 1        | 3        | 0        | 6        | 6.0        |
| ETSU           | 12/08/2020 |          | 08:48        | 0-1        | .000        | 0-0        | .000        | 1-4         | .250        | 3        | 0        | 3         | 5.0        | 4         | 0        | 1        | 0        | 1        | 1        | 3.5        |
| at Chattanooga | 12/13/2020 |          | 08:38        | 0-1        | .000        | 0-0        | .000        | 0-0         | .000        | 0        | 0        | 0         | 3.3        | 5         | 0        | 2        | 2        | 0        | 0        | 2.3        |
| VCU            | 12/17/2020 |          | 13:44        | 0-1        | .000        | 0-0        | .000        | 0-0         | .000        | 1        | 0        | 1         | 2.8        | 4         | 0        | 0        | 2        | 0        | 0        | 1.8        |
| <b>Totals</b>  |            | <b>0</b> | <b>55:43</b> | <b>3-6</b> | <b>.500</b> | <b>0-0</b> | <b>.000</b> | <b>1-5</b>  | <b>.200</b> | <b>7</b> | <b>4</b> | <b>11</b> | <b>2.8</b> | <b>15</b> | <b>0</b> | <b>4</b> | <b>7</b> | <b>1</b> | <b>7</b> | <b>1.8</b> |

**Player Averages**

| Games Played | Minutes/game | Points/game | FG Pct | 3FG Pct | FT Pct | Rebounds/game | Assists/game | Turnovers/game | Assist/Turnover ratio | Steals/game | Blocks/game |
|--------------|--------------|-------------|--------|---------|--------|---------------|--------------|----------------|-----------------------|-------------|-------------|
| 4            | 13.9         | 1.8         | 50.0   | 0.0     | 20.0   | 2.8           | 0.0          | 1.0            | 0.0                   | 0.3         | 1.8         |

**Career Statistics/Career Highs****BOWMAN, Emily**

|              |       |            |                | Field Goals |             | 3-Point    |             | F-Throws   |             | Rebounds |          |           |            |           |          |          |          |          |          | Scoring  |            |
|--------------|-------|------------|----------------|-------------|-------------|------------|-------------|------------|-------------|----------|----------|-----------|------------|-----------|----------|----------|----------|----------|----------|----------|------------|
| SEASON       | TEAM  | GP-GS      | MIN/AVG        | FG-FGA      | FG%         | 3FG-FGA    | 3FG%        | FT-FTA     | FT%         | OFF      | DEF      | TOT       | AVG        | PF        | FO       | AST      | TO       | BLK      | STL      | PTS      | AVG        |
| 2020-21      | Vandy | 4-0        | 56/13.9        | 3-6         | .500        | 0-0        | .000        | 1-5        | .200        | 7        | 4        | 11        | 2.8        | 15        | 1        | 0        | 4        | 7        | 1        | 7        | 1.8        |
| <b>TOTAL</b> |       | <b>4-0</b> | <b>56/13.9</b> | <b>3-6</b>  | <b>.500</b> | <b>0-0</b> | <b>.000</b> | <b>1-5</b> | <b>.200</b> | <b>7</b> | <b>4</b> | <b>11</b> | <b>2.8</b> | <b>15</b> | <b>1</b> | <b>0</b> | <b>4</b> | <b>7</b> | <b>1</b> | <b>7</b> | <b>1.8</b> |

**Single Game Highs**

| Statistic   | Value |                         |
|-------------|-------|-------------------------|
| Points      | 6     | at Little Rock 12/05/20 |
| Rebounds    | 7     | at Little Rock 12/05/20 |
| Steals      | 1     | vs ETSU 12/08/20        |
| Blocks      | 3     | at Little Rock 12/05/20 |
| FG Made     | 3     | at Little Rock 12/05/20 |
| FG Attempts | 3     | at Little Rock 12/05/20 |
| FT Made     | 1     | vs ETSU 12/08/20        |
| FT Attempts | 4     | vs ETSU 12/08/20        |

## #50 KAYLON SMITH

### 2019-20 Game-by-Game Statistics

#### #50 SMITH, Kaylon

| Opponent          | Date       | GS       | MIN           | Total        |             | 3-Pointers |             | Free throws |             | Rebounds  |           |           |            | PF        | A        | T/O       | BLK       | STL      | PTS       | AVG        |
|-------------------|------------|----------|---------------|--------------|-------------|------------|-------------|-------------|-------------|-----------|-----------|-----------|------------|-----------|----------|-----------|-----------|----------|-----------|------------|
|                   |            |          |               | FG-FGA       | PCT         | 3FG-3FGA   | PCT         | FT-FTA      | PCT         | OFF       | DEF       | TOT       | AVG        |           |          |           |           |          |           |            |
| Jacksonville St.  | 11/05/2019 |          | 07:14         | 0-0          | .000        | 0-0        | .000        | 2-2         | 1.000       | 0         | 2         | 2         | 2.0        | 0         | 0        | 0         | 1         | 0        | 2         | 2.0        |
| Radford           | 11/08/2019 |          | 02:24         | 0-0          | .000        | 0-0        | .000        | 0-0         | .000        | 0         | 0         | 0         | 1.0        | 1         | 0        | 1         | 0         | 0        | 0         | 1.0        |
| Saint Louis       | 11/17/2019 |          | 02:22         | 0-0          | .000        | 0-0        | .000        | 0-0         | .000        | 0         | 0         | 0         | 0.7        | 0         | 0        | 0         | 0         | 0        | 0         | 0.7        |
| Furman            | 11/22/2019 |          | 11:25         | 0-2          | .000        | 0-0        | .000        | 0-0         | .000        | 2         | 1         | 3         | 1.3        | 2         | 1        | 1         | 0         | 0        | 0         | 0.5        |
| at Tennessee St.  | 11/25/2019 |          | 14:00         | 6-8          | .750        | 0-0        | .000        | 0-0         | .000        | 1         | 4         | 5         | 2.0        | 1         | 0        | 1         | 0         | 0        | 12        | 2.8        |
| vs Rutgers        | 11/28/2019 |          | 01:56         | 0-0          | .000        | 0-0        | .000        | 0-0         | .000        | 0         | 0         | 0         | 1.7        | 0         | 0        | 0         | 0         | 0        | 0         | 2.3        |
| vs Seton Hall     | 11/29/2019 |          | 04:04         | 0-1          | .000        | 0-0        | .000        | 0-0         | .000        | 0         | 1         | 1         | 1.6        | 0         | 0        | 0         | 0         | 0        | 0         | 2.0        |
| Tennessee Tech    | 12/05/2019 |          | 05:27         | 0-2          | .000        | 0-0        | .000        | 0-0         | .000        | 0         | 0         | 0         | 1.4        | 0         | 0        | 1         | 0         | 0        | 0         | 1.8        |
| Eastern Ky.       | 12/15/2019 |          | 09:36         | 3-5          | .600        | 0-0        | .000        | 0-0         | .000        | 0         | 1         | 1         | 1.3        | 0         | 0        | 0         | 0         | 0        | 6         | 2.2        |
| vs UC Irvine      | 12/20/2019 |          | 09:47         | 1-1          | 1.000       | 0-0        | .000        | 0-0         | .000        | 1         | 1         | 2         | 1.4        | 1         | 0        | 0         | 1         | 0        | 2         | 2.2        |
| at Washington     | 12/21/2019 |          | 05:06         | 1-1          | 1.000       | 0-0        | .000        | 0-2         | .000        | 1         | 0         | 1         | 1.4        | 2         | 0        | 0         | 0         | 0        | 2         | 2.2        |
| Columbia          | 12/29/2019 |          | 14:30         | 1-4          | .250        | 0-0        | .000        | 0-0         | .000        | 1         | 3         | 4         | 1.6        | 2         | 0        | 2         | 2         | 1        | 2         | 2.2        |
| Auburn            | 01/02/2020 |          | 14:31         | 0-2          | .000        | 0-0        | .000        | 0-0         | .000        | 0         | 2         | 2         | 1.6        | 1         | 0        | 1         | 1         | 1        | 0         | 2.0        |
| at Florida        | 01/05/2020 |          | 06:07         | 0-0          | .000        | 0-0        | .000        | 0-0         | .000        | 0         | 0         | 0         | 1.5        | 0         | 0        | 0         | 0         | 0        | 0         | 1.9        |
| at Georgia        | 01/09/2020 |          | 07:46         | 2-4          | .500        | 1-1        | 1.000       | 0-0         | .000        | 0         | 1         | 1         | 1.5        | 2         | 0        | 1         | 0         | 0        | 5         | 2.1        |
| South Carolina    | 01/12/2020 |          | 13:12         | 0-1          | .000        | 0-0        | .000        | 0-0         | .000        | 0         | 1         | 1         | 1.4        | 2         | 0        | 0         | 0         | 0        | 0         | 1.9        |
| Arkansas          | 01/19/2020 |          | 21:30         | 3-6          | .500        | 0-0        | .000        | 0-0         | .000        | 3         | 5         | 8         | 1.8        | 0         | 0        | 0         | 3         | 1        | 6         | 2.2        |
| Mississippi St.   | 01/23/2020 |          | 09:49         | 1-2          | .500        | 0-0        | .000        | 0-0         | .000        | 0         | 2         | 2         | 1.8        | 2         | 0        | 0         | 0         | 0        | 2         | 2.2        |
| at Alabama        | 01/26/2020 |          | 16:51         | 0-1          | .000        | 0-0        | .000        | 0-2         | .000        | 1         | 2         | 3         | 1.9        | 5         | 0        | 2         | 0         | 1        | 0         | 2.1        |
| Tennessee         | 01/30/2020 |          | 02:48         | 0-0          | .000        | 0-0        | .000        | 2-2         | 1.000       | 1         | 0         | 1         | 1.9        | 0         | 0        | 0         | 0         | 0        | 2         | 2.1        |
| at Auburn         | 02/02/2020 |          | 08:41         | 1-1          | 1.000       | 0-0        | .000        | 0-0         | .000        | 0         | 0         | 0         | 1.8        | 1         | 0        | 0         | 0         | 0        | 2         | 2.0        |
| at Texas A&M      | 02/13/2020 |          | 20:11         | 2-2          | 1.000       | 0-0        | .000        | 0-0         | .000        | 0         | 2         | 2         | 1.8        | 3         | 0        | 1         | 1         | 0        | 4         | 2.1        |
| at South Carolina | 02/17/2020 |          | 18:00         | 1-5          | .200        | 0-0        | .000        | 0-0         | .000        | 2         | 1         | 3         | 1.8        | 1         | 1        | 0         | 1         | 1        | 2         | 2.1        |
| Missouri          | 02/20/2020 |          | 06:30         | 2-3          | .667        | 0-1        | .000        | 0-0         | .000        | 0         | 1         | 1         | 1.8        | 0         | 0        | 0         | 0         | 1        | 4         | 2.2        |
| at Tennessee      | 02/23/2020 |          | 18:03         | 1-3          | .333        | 0-1        | .000        | 0-0         | .000        | 2         | 1         | 3         | 1.8        | 2         | 0        | 1         | 0         | 0        | 2         | 2.2        |
| at LSU            | 02/27/2020 |          | 08:48         | 1-1          | 1.000       | 0-0        | .000        | 0-2         | .000        | 2         | 0         | 2         | 1.8        | 1         | 0        | 1         | 0         | 0        | 2         | 2.2        |
| Kentucky          | 03/01/2020 |          | 11:33         | 0-0          | .000        | 0-0        | .000        | 1-2         | .500        | 0         | 1         | 1         | 1.8        | 2         | 1        | 0         | 0         | 1        | 1         | 2.1        |
| vs Auburn         | 03/04/2020 |          | 16:25         | 1-2          | .500        | 0-0        | .000        | 0-0         | .000        | 0         | 2         | 2         | 1.8        | 0         | 0        | 1         | 0         | 0        | 2         | 2.1        |
| <b>Totals</b>     |            | <b>0</b> | <b>288:36</b> | <b>27-57</b> | <b>.474</b> | <b>1-3</b> | <b>.333</b> | <b>5-12</b> | <b>.417</b> | <b>17</b> | <b>34</b> | <b>51</b> | <b>1.8</b> | <b>31</b> | <b>3</b> | <b>14</b> | <b>10</b> | <b>7</b> | <b>60</b> | <b>2.1</b> |

#### Player Averages

| Games Played | Minutes/game | Points/game | FG Pct | 3FG Pct | FT Pct | Rebounds/game | Assists/game | Turnovers/game | Assist/Turnover ratio | Steals/game | Blocks/game |
|--------------|--------------|-------------|--------|---------|--------|---------------|--------------|----------------|-----------------------|-------------|-------------|
| 28           | 10.3         | 2.1         | 47.4   | 33.3    | 41.7   | 1.8           | 0.1          | 0.5            | 0.2                   | 0.3         | 0.4         |

### Career Statistics/Career Highs

#### SMITH, Kaylon

|         |       |       |          | Field Goals |      | 3-Point |      | F-Throws |      | Rebounds |     |     |     |       |     |    |     |     | Scoring |     |
|---------|-------|-------|----------|-------------|------|---------|------|----------|------|----------|-----|-----|-----|-------|-----|----|-----|-----|---------|-----|
| SEASON  | TEAM  | GP-GS | MIN/AVG  | FG-FGA      | FG%  | 3FG-FGA | 3FG% | FT-FTA   | FT%  | OFF      | DEF | TOT | AVG | PF-FO | AST | TO | BLK | STL | PTS     | AVG |
| 2019-20 | Vandy | 28-0  | 289/10.3 | 27-57       | .474 | 1-3     | .333 | 5-12     | .417 | 17       | 34  | 51  | 1.8 | 31-1  | 3   | 14 | 10  | 7   | 60      | 2.1 |
| TOTAL   |       | 28-0  | 289/10.3 | 27-57       | .474 | 1-3     | .333 | 5-12     | .417 | 17       | 34  | 51  | 1.8 | 31-1  | 3   | 14 | 10  | 7   | 60      | 2.1 |

#### Single Game Highs

| Statistic    | Value |  |
|--------------|-------|--|
| Points       | 12    | at Tennessee St. 11/25/19  |
| Rebounds     | 8     | vs Arkansas 01/19/20   |
| Assists      | 1     | vs Kentucky 03/01/20, at South Carolina 02/17/20, vs Furman 11/22/19 |
| Steals       | 1     | 7 times  |
| Blocks       | 3     | vs Arkansas 01/19/20   |
| FG Made      | 6     | at Tennessee St. 11/25/19  |
| FG Attempts  | 8     | at Tennessee St. 11/25/19  |
| 3FG Made     | 1     | at Georgia 01/09/20  |
| 3FG Attempts | 1     | at Tennessee 02/23/20, vs Missouri 02/20/20, at Georgia 01/09/20     |
| FT Made      | 2     | vs Jacksonville St. 11/05/19, vs Tennessee 01/30/20                  |
| FT Attempts  | 2     | 6 times  |

## TV/RADIO ROSTER



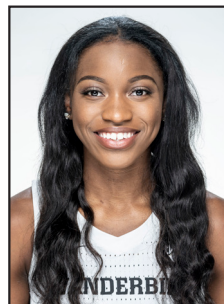
**0 • BELLA LACHANCE**  
Freshman • G • 5-6



**1 • ENNA PEHADZIC**  
Fifth Year • G • 5-9



**2 • CHELSIE HALL**  
Senior • G • 5-7



**3 • JORDYN CAMBRIDGE**  
Junior • G • 5-9



**5 • YAOBRYON CHAMBERS**  
Sophomore • F • 6-1



**12 • DEMI WASHINGTON**  
Sophomore • G • 5-10



**15 • BRINAE ALEXANDER**  
Junior • F • 5-10



**22 • BRYLEE BARTRAM**  
Sophomore • G • 5-8



**23 • KOI LOVE**  
Sophomore • F • 6-0



**24 • AUTUMN NEWBY**  
Senior • F • 6-2



**25 • KYNDALL GOLDEN**  
Freshman • F • 6-3



**33 • KIARA PEARL**  
Senior • G • 5-11



**44 • EMILY BOWMAN**  
Freshman • G • 5-8



**50 • KAYLON SMITH**  
Redshirt Senior • F • 6-5



**STEPHANIE WHITE**  
Head Coach



**KELLY KOMARA**  
Associate Head Coach



**GARY REDUS**  
Assistant Coach/  
Recruiting Coordinator



**MARQU'ES WEBB**  
Assistant Coach