



VCU at Vanderbilt

12/17/20 Memorial Gymnasium, Nashville
2020-21 Women's Basketball

Game Time: 2:00 PM
Game Duration: 2:01
Attendance: 46

Officials: Beverly Roberts, Tina Napier, Dawn Marsh

VCU - 81

Record: 2-5

NO.	Name	F	Min	FG			3P			FT			Rebounds			Fouls		TP	AS	TO	ST	Blocks		+/-
				M-A	M-A	M-A	OR	DR	TOT	PF	FD	OR	DR	TOT	BS	BA								
22	Sydnei Archie	F	21:03	6-10	0-0	1-3	2	2	4	4	3	13	1	2	0	0	0	0	0	0	0	-10		
0	Sarah Te-Biasu	G	31:46	4-13	3-8	1-2	0	4	4	1	1	12	2	0	1	0	0	0	0	0	-1			
1	Taya Robinson	G	30:48	6-10	2-5	6-8	4	6	10	4	6	20	2	1	0	0	0	0	0	-6				
3	Madison Hattix-Covington	G	30:23	1-8	0-3	1-2	4	2	6	1	4	3	1	2	3	2	1	0	0	-16				
24	Tera Reed	G	36:48	8-12	1-3	4-4	2	1	3	3	4	21	4	1	2	0	1	0	1	-9				
2	Janika Griffith-Wallace		25:47	4-8	0-1	2-2	0	1	1	0	1	10	3	1	1	0	0	0	0	2				
33	Elze Motekaityte		09:12	0-2	0-0	0-0	0	0	0	2	0	0	0	0	1	0	0	0	0	5				
13	Chloe Bloom		11:58	1-6	0-0	0-0	1	2	3	0	0	2	1	1	0	0	0	2	0	-2				
35	Samantha Robinson		02:15	0-0	0-0	0-0	0	0	0	0	0	0	0	0	1	0	0	0	0	-8				
Team							2	3	5			0			1									
Totals				30-69	6-20	15-21	15	21	36	15	19	81	14	11	7	2	4				-9			

Technical Fouls::NONE

Shooting By Period		
1st FG%	7-21	33.3%
3PT%	1-4	25.0%
FT%	1-1	100%
2nd FG%	9-17	52.9%
3PT%	3-7	42.9%
FT%	3-3	100%
3rd FG%	6-13	46.2%
3PT%	1-4	25.0%
FT%	7-11	63.6%
4th FG%	8-18	44.4%
3PT%	1-5	20.0%
FT%	4-6	66.7%
GM FG%	30-69	43.5%
3PT%	6-20	30.0%
FT%	15-21	71.4%

Dead Ball Rebounds: 6, 0

Vanderbilt - 90

Record: 3-1

NO.	Name	F	Min	FG			3P			FT			Rebounds			Fouls		TP	AS	TO	ST	Blocks		+/-
				M-A	M-A	M-A	OR	DR	TOT	PF	FD	OR	DR	TOT	BS	BA								
5	Yaubryon Chambers	F	24:54	2-2	0-0	0-0	2	3	5	3	0	4	1	1	0	2	0	8						
15	Brinae Alexander	F	30:21	7-16	1-4	5-7	3	6	9	3	4	20	4	3	1	0	2	18						
23	Koi Love	F	33:42	12-15	1-3	4-6	2	2	4	4	8	29	0	3	2	0	0	-1						
1	Enna Pehadzic	G	25:10	3-11	1-7	1-2	0	2	2	2	2	8	2	2	1	0	0	-7						
2	Chelsie Hall	G	37:45	4-10	1-1	2-2	2	5	7	2	1	11	9	3	0	0	0	7						
22	Brylee Bartram		32:09	6-10	6-10	0-0	0	2	2	0	0	18	0	1	0	0	0	10						
44	Emily Bowman		13:44	0-1	0-0	0-0	1	0	1	4	0	0	0	0	0	2	0	8						
0	Bella LaChance		02:15	0-0	0-0	0-0	0	0	0	1	0	0	1	0	0	0	0	2						
Team							1	4	5			0			0									
Totals				34-65	10-25	12-17	11	24	35	19	15	90	17	13	4	4	2	9						

Technical Fouls::NONE

Shooting By Period		
1st FG%	8-18	44.4%
3PT%	1-5	20.0%
FT%	3-4	75%
2nd FG%	7-16	43.8%
3PT%	2-8	25.0%
FT%	2-2	100%
3rd FG%	11-16	68.8%
3PT%	3-5	60.0%
FT%	3-4	75%
4th FG%	8-15	53.3%
3PT%	4-7	57.1%
FT%	4-7	57.1%
GM FG%	34-65	52.3%
3PT%	10-25	40.0%
FT%	12-17	70.6%

Dead Ball Rebounds: 4, 0

	VCU	Vandy
Biggest lead	5 (3 rd 8:55)	11 (2 nd 8:43)
Best Scoring Run	10 (2 nd 6:25)	9 (1 st 0:16)
Lead Changes	12	
Times Tied	8	
Time with Lead	14:51	20:26

Points from	VCU	Vandy
Turnovers	9	17
Paint	42	42
Second Chance	13	17
Fast Breaks	11	9
Bench	12	18

	Period by Period Scoring				
	1st	2nd	3rd	4th	TOT
VCU	16	24	20	21	81
Vandy	20	18	28	24	90



VCU at Vanderbilt

12/17/20 Memorial Gymnasium, Nashville
2020-21 Women's Basketball

Game Time: 2:00 PM

Game Duration: 2:01

Attendance: 46

Officials: Beverly Roberts, Tina Napier, Dawn Marsh

Period 1

Quarter Starters:

Vandy	1 Pehadzic E	2 Hall C	5 Chambers Y	15 Alexander B	23 Love K
VCU	0 Te-Biasu S	1 Robinson T	3 Hattix-Covington M	22 Archie S	24 Reed T

Game Time	Vandy	Score	Diff	VCU
10:00	5 CHAMBERS Y jumpball won			3 HATTIX-COVINGTON M jumpball lost
09:47	15 ALEXANDER B 2pt FG in the paint, layup missed			
09:43				22 ARCHIE S defensive rebound (1)
09:29				22 ARCHIE S 2pt FG outside the paint, jump shot missed
09:27	5 CHAMBERS Y defensive rebound (1)			
09:23	15 ALEXANDER B turnover travel (1)			
09:08				22 ARCHIE S 2pt FG from turnover in the paint, layup missed
09:06	5 CHAMBERS Y defensive rebound (2)			
08:47	15 ALEXANDER B foul drawn (1)			24 REED T foul shooting (1 - 1)
08:47	15 ALEXANDER B free throw 1 - 2 missed			
08:47	offensive dead ball rebound (1)			
08:47	15 ALEXANDER B free throw 2 - 2 made (1)	1-0	1	
08:35				3 HATTIX-COVINGTON M 3pt FG , jump shot missed
08:30				24 REED T offensive rebound (1)
08:26				0 TE-BIASU S 2pt FG second chance in the paint, layup missed
08:26				3 HATTIX-COVINGTON M offensive rebound (1)
08:26	jump ball situation			
08:23		1-2	-1	24 REED T 2pt FG second chance in the paint, layup made (2)
08:23	15 ALEXANDER B foul shooting (1 - 1)			24 REED T foul drawn (1)
08:23		1-3	-2	24 REED T free throw 1 - 1 made (3)
08:13	23 LOVE K foul drawn (1)			22 ARCHIE S foul shooting (1 - 2)
08:13	23 LOVE K free throw 1 - 2 made (1)	2-3	-1	
08:13	23 LOVE K free throw 2 - 2 made (2)	3-3	0	
08:05				22 ARCHIE S turnover travel (1)
08:05	23 LOVE K turnover travel (1)			
07:57				22 ARCHIE S 2pt FG from turnover in the paint, layup missed
07:53				3 HATTIX-COVINGTON M offensive rebound (2)
07:50				0 TE-BIASU S 3pt FG from turnover second chance, jump shot missed
07:47	2 HALL C defensive rebound (1)			
07:44	23 LOVE K 2pt FG fast break in the paint, layup made (4)	5-3	2	
07:44	2 HALL C assist (1)			
07:26		5-6	-1	1 ROBINSON T 3pt FG , jump shot made (3)
07:26				22 ARCHIE S assist (1)
07:11	1 PEHADZIC E 2pt FG in the paint, layup missed			
07:11				24 REED T defensive rebound (2)
07:11	1 PEHADZIC E foul personal (1 - 2)			24 REED T foul drawn (2)
07:11				3 HATTIX-COVINGTON M substitution out
07:11				22 ARCHIE S substitution out
07:11				2 GRIFFITH-WALLACE J substitution in
07:11				33 MOTEKAITYTE E substitution in
07:11	15 ALEXANDER B substitution out			
07:11	22 BARTRAM B substitution in			



VCU at Vanderbilt

12/17/20 Memorial Gymnasium, Nashville
2020-21 Women's Basketball

Game Time: 2:00 PM

Game Duration: 2:01

Attendance: 46

Officials: Beverly Roberts, Tina Napier, Dawn Marsh

Game Time	Vandy	Score	Diff	VCU
06:59	23 LOVE K steal (1)			2 GRIFFITH-WALLACE J turnover lost ball (1)
06:28	23 LOVE K 2pt FG from turnover in the paint, layup made (6)	7-6	1	
06:28	2 HALL C assist (2)			
06:11		7-8	-1	24 REED T 2pt FG in the paint, layup made (5)
05:55	22 BARTRAM B 3pt FG , jump shot missed			
05:48				1 ROBINSON T defensive rebound (1)
05:45		7-10	-3	1 ROBINSON T 2pt FG fast break in the paint, driving layup made (5)
05:36	23 LOVE K foul drawn (2)			1 ROBINSON T foul personal (1 - 3)
05:36	5 CHAMBERS Y substitution out			
05:36	44 BOWMAN E substitution in			
05:20				13 BLOOM C substitution in
05:20				1 ROBINSON T substitution out
05:20	1 PEHADZIC E 3pt FG , jump shot missed			
05:16	2 HALL C offensive rebound (2)			
05:14	2 HALL C 2pt FG second chance in the paint, layup made (2)	9-10	-1	
04:56				2 GRIFFITH-WALLACE J 2pt FG in the paint, layup missed
04:51				13 BLOOM C offensive rebound (1)
04:50				13 BLOOM C 2pt FG second chance in the paint, layup missed
04:46	2 HALL C defensive rebound (3)			
04:46	2 HALL C 2pt FG outside the paint, jump shot missed			
04:46				defensive rebound (8)
04:46	Timeout media			
04:44	1 PEHADZIC E substitution out			
04:44	15 ALEXANDER B substitution in			
04:44				24 REED T substitution out
04:44				3 HATTIX-COVINGTON M substitution in
04:21				33 MOTEKAITYTE E 2pt FG in the paint, layup missed
04:17	2 HALL C defensive rebound (4)			
04:14	15 ALEXANDER B 3pt FG , jump shot missed			
04:10				0 TE-BIASU S defensive rebound (1)
04:06		9-12	-3	0 TE-BIASU S 2pt FG fast break in the paint, layup made (2)
03:46	2 HALL C 2pt FG outside the paint, jump shot missed			
03:41				13 BLOOM C defensive rebound (2)
03:28				13 BLOOM C 2pt FG in the paint, layup blocked
03:28	44 BOWMAN E block (1)			
03:22	23 LOVE K defensive rebound (1)			
03:21	23 LOVE K turnover bad pass (2)			
03:21				0 TE-BIASU S substitution out
03:21				33 MOTEKAITYTE E substitution out
03:21				1 ROBINSON T substitution in
03:21				22 ARCHIE S substitution in
03:02				3 HATTIX-COVINGTON M 2pt FG from turnover outside the paint, jump shot missed
02:58	15 ALEXANDER B defensive rebound (1)			
02:53	23 LOVE K foul drawn (3)			22 ARCHIE S foul personal (2 - 4)
02:53				2 GRIFFITH-WALLACE J substitution out
02:53				24 REED T substitution in
02:47	23 LOVE K 2pt FG in the paint, layup missed			
02:44	23 LOVE K offensive rebound (2)			



VCU at Vanderbilt

12/17/20 Memorial Gymnasium, Nashville
2020-21 Women's Basketball

Game Time: 2:00 PM

Game Duration: 2:01

Attendance: 46

Officials: Beverly Roberts, Tina Napier, Dawn Marsh

Game Time	Vandy	Score	Diff	VCU
02:43	23 LOVE K 2pt FG second chance in the paint, jump shot made (8)	11-12	-1	
02:26		11-14	-3	1 ROBINSON T 2pt FG in the paint, layup made (7)
02:26				13 BLOOM C assist (1)
02:09	15 ALEXANDER B 2pt FG in the paint, jump shot made (3)	13-14	-1	
01:49				1 ROBINSON T 3pt FG , jump shot missed
01:46	2 HALL C defensive rebound (5)			
01:41	2 HALL C 2pt FG fast break in the paint, layup made (4)	15-14	1	
01:20				13 BLOOM C 2pt FG outside the paint, jump shot missed
01:17				1 ROBINSON T offensive rebound (2)
01:16				24 REED T turnover travel (1)
01:16				22 ARCHIE S substitution out
01:16				13 BLOOM C substitution out
01:16				0 TE-BIASU S substitution in
01:16				35 ROBINSON S substitution in
01:11	23 LOVE K substitution out			
01:11	1 PEHADZIC E substitution in			
01:03	22 BARTRAM B 3pt FG from turnover, jump shot made (3)	18-14	4	
01:03	2 HALL C assist (3)			
00:46				0 TE-BIASU S 2pt FG in the paint, jump shot missed
00:43	15 ALEXANDER B defensive rebound (2)			
00:27	1 PEHADZIC E 3pt FG , jump shot missed			
00:24	44 BOWMAN E offensive rebound (1)			
00:22	44 BOWMAN E 2pt FG second chance in the paint, jump shot missed			
00:18	15 ALEXANDER B offensive rebound (3)			
00:16	15 ALEXANDER B 2pt FG second chance in the paint, layup made (5)	20-14	6	
00:02		20-16	4	1 ROBINSON T 2pt FG in the paint, layup made (9)
END OF PERIOD				
Vandy 20-16 VCU				



VCU at Vanderbilt

12/17/20 Memorial Gymnasium, Nashville
2020-21 Women's Basketball

Game Time: 2:00 PM
Game Duration: 2:01
Attendance: 46

Officials: Beverly Roberts, Tina Napier, Dawn Marsh

VCU - 16

NO.	Name	F/G	Min	FG			Rebounds			Fouls		TP	AS	TO	ST	Blocks		+/-
				M-A	M-A	M-A	OR	DR	TOT	PF	FD					BS	BA	
22	Sydnei Archie	F	04:54	0-3	0-0	0-0	0	1	1	2	0	1	1	0	0	0	-3	
0	Sarah Te-Biasu	G	07:55	1-4	0-1	0-0	0	1	1	0	0	2	0	0	0	0	0	
1	Taya Robinson	G	08:01	4-5	1-2	0-0	1	1	2	1	0	9	0	0	0	0	-4	
3	Madison Hattix-Covington	G	07:33	0-2	0-1	0-0	2	0	2	0	0	0	0	0	0	0	-4	
24	Tera Reed	G	08:09	2-2	0-0	1-1	1	1	2	1	2	5	0	1	0	0	-6	
2	Janika Griffith-Wallace		04:18	0-1	0-0	0-0	0	0	0	0	0	0	0	1	0	0	2	
33	Elze Motekaityte		03:50	0-1	0-0	0-0	0	0	0	0	0	0	0	0	0	0	2	
13	Chloe Bloom		04:04	0-3	0-0	0-0	1	1	2	0	0	0	1	0	0	1	-4	
35	Samantha Robinson		01:16	0-0	0-0	0-0	0	0	0	0	0	0	0	0	0	0	-3	
Team							0	1	1		0		0					
Totals				7-21	1-4	1-1	5	6	11	4	2	16	2	3	0	0	1	-4

Shooting By Period		
1st FG%	7-21	33.3%
3PT%	1-4	25.0%
FT%	1-1	100%
GM FG%	7-21	33.3%
3PT%	1-4	25.0%
FT%	1-1	100.0%

Dead Ball Rebounds: 0, 0

Technical Fouls::NONE

Vanderbilt - 20

NO.	Name	F/G	Min	FG			Rebounds			Fouls		TP	AS	TO	ST	Blocks		+/-
				M-A	M-A	M-A	OR	DR	TOT	PF	FD					BS	BA	
5	Yaubryon Chambers	F	04:24	0-0	0-0	0-0	0	2	2	0	0	0	0	0	0	0	-3	
15	Brinae Alexander	F	07:33	2-4	0-1	1-2	1	2	3	1	1	5	0	1	0	0	4	
23	Koi Love	F	08:49	3-4	0-0	2-2	1	1	2	0	3	8	0	2	1	0	1	
1	Enna Pehadzic	G	06:27	0-3	0-2	0-0	0	0	0	1	0	0	0	0	0	0	2	
2	Chelsie Hall	G	10:00	2-4	0-0	0-0	1	4	5	0	0	4	3	0	0	0	4	
22	Brylee Bartram		07:11	1-2	1-2	0-0	0	0	0	0	0	3	0	0	0	0	5	
44	Emily Bowman		05:36	0-1	0-0	0-0	1	0	1	0	0	0	0	0	0	1	7	
Team							0	0	0		0		0					
Totals				8-18	1-5	3-4	4	9	13	2	4	20	3	3	1	1	0	4

Shooting By Period		
1st FG%	8-18	44.4%
3PT%	1-5	20.0%
FT%	3-4	75%
GM FG%	8-18	44.4%
3PT%	1-5	20.0%
FT%	3-4	75.0%

Dead Ball Rebounds: 1, 0

Technical Fouls::NONE

	VCU	Vandy
Biggest lead	3 (1 st 5:45)	6 (1 st 0:16)
Best Scoring Run	4 (1 st 5:45)	9 (1 st 0:16)
Lead Changes	6	
Times Tied	1	
Time with Lead	05:38	02:40

Points from	VCU	Vandy
Turnovers	0	5
Paint	12	14
Second Chance	3	6
Fast Breaks	4	4
Bench	0	3

	Period by Period Scoring				
	1st	2nd	3rd	4th	TOT
VCU	16	24	20	21	81
Vandy	20	18	28	24	90



VCU at Vanderbilt

12/17/20 Memorial Gymnasium, Nashville
2020-21 Women's Basketball

Game Time: 2:00 PM
Game Duration: 2:01
Attendance: 46

Officials: Beverly Roberts, Tina Napier, Dawn Marsh

Period 2

Quarter Starters:

Vandy	0 LaChance B	1 Pehadzic E	22 Bartram B	23 Love K	44 Bowman E
VCU	0 Te-Biasu S	1 Robinson T	3 Hattix-Covington M	24 Reed T	35 Robinson S

Game Time	Vandy	Score	Diff	VCU
10:00	2 HALL C substitution out			
10:00	15 ALEXANDER B substitution out			
10:00	0 LACHANCE B substitution in			
10:00	23 LOVE K substitution in			
09:46	23 LOVE K 2pt FG outside the paint, jump shot made (10)	22-16	6	
09:46	1 PEHADZIC E assist (1)			
09:31	23 LOVE K foul personal (1 - 1)			3 HATTIX-COVINGTON M foul drawn (1)
09:28				35 ROBINSON S turnover lost ball (1)
09:16	22 BARTRAM B 3pt FG from turnover, jump shot made (6)	25-16	9	
09:16	0 LACHANCE B assist (1)			
09:05				0 TE-BIASU S 3pt FG , jump shot missed
09:02	defensive rebound (14)			
09:01				3 HATTIX-COVINGTON M substitution out
09:01				35 ROBINSON S substitution out
09:01				2 GRIFFITH-WALLACE J substitution in
09:01				13 BLOOM C substitution in
08:43	1 PEHADZIC E 2pt FG in the paint, jump shot made (2)	27-16	11	
08:29	0 LACHANCE B foul personal (1 - 2)			1 ROBINSON T foul drawn (1)
08:13		27-19	8	1 ROBINSON T 3pt FG , jump shot made (12)
08:13				0 TE-BIASU S assist (1)
07:58	1 PEHADZIC E 3pt FG , jump shot missed			
07:54				13 BLOOM C defensive rebound (3)
07:45		27-21	6	24 REED T 2pt FG in the paint, driving layup made (7)
07:45	44 BOWMAN E foul shooting (1 - 3)			24 REED T foul drawn (3)
07:45	0 LACHANCE B substitution out			
07:45	22 BARTRAM B substitution out			
07:45	2 HALL C substitution in			
07:45	15 ALEXANDER B substitution in			
07:45		27-22	5	24 REED T free throw 1 - 1 made (8)
07:28	15 ALEXANDER B 2pt FG in the paint, jump shot missed			
07:28				1 ROBINSON T defensive rebound (3)
07:28	15 ALEXANDER B foul personal (2 - 4)			1 ROBINSON T foul drawn (2)
07:28	1 PEHADZIC E substitution out			
07:28	22 BARTRAM B substitution in			
07:14				13 BLOOM C 2pt FG in the paint, layup missed
07:11	15 ALEXANDER B defensive rebound (4)			
07:06	2 HALL C 2pt FG in the paint, jump shot missed			
07:01				1 ROBINSON T defensive rebound (4)
06:55		27-24	3	13 BLOOM C 2pt FG in the paint, jump shot made (2)
06:55				24 REED T assist (1)
06:27	15 ALEXANDER B 3pt FG , jump shot missed			
06:25				defensive rebound (15)
06:25	15 ALEXANDER B substitution out			



VCU at Vanderbilt

12/17/20 Memorial Gymnasium, Nashville
2020-21 Women's Basketball

Game Time: 2:00 PM
Game Duration: 2:01
Attendance: 46

Officials: Beverly Roberts, Tina Napier, Dawn Marsh

Game Time	Vandy	Score	Diff	VCU
06:25	1 PEHADZIC E substitution in			
06:25				13 BLOOM C substitution out
06:25				33 MOTEKAITYTE E substitution in
06:25	44 BOWMAN E foul personal (2 - 5)			1 ROBINSON T foul drawn (3)
06:25		27-25	2	1 ROBINSON T free throw fast break 1 - 2 made (13)
06:25		27-26	1	1 ROBINSON T free throw fast break 2 - 2 made (14)
06:07	1 PEHADZIC E 3pt FG , jump shot missed			
06:01	23 LOVE K offensive rebound (3)			
06:03	Timeout 30 Sec			
05:59	23 LOVE K 2pt FG second chance in the paint, layup made (12)	29-26	3	
05:59	2 HALL C assist (4)			
05:48	5 CHAMBERS Y substitution in			
05:48	44 BOWMAN E substitution out			
05:48				2 GRIFFITH-WALLACE J 2pt FG in the paint, layup missed
05:44				24 REED T offensive rebound (3)
05:33		29-29	0	24 REED T 3pt FG second chance, jump shot made (11)
05:16	22 BARTRAM B turnover bad pass (1)			24 REED T steal (1)
05:09				24 REED T 3pt FG from turnover, jump shot missed
05:08	defensive rebound (17)			
04:56	22 BARTRAM B 3pt FG , jump shot missed			
04:52				0 TE-BIASU S defensive rebound (2)
04:37		29-31	-2	24 REED T 2pt FG outside the paint, jump shot made (13)
04:26				0 TE-BIASU S substitution out
04:26				3 HATTIX-COVINGTON M substitution in
04:11	23 LOVE K turnover bad pass (3)			3 HATTIX-COVINGTON M steal (1)
04:05		29-33	-4	2 GRIFFITH-WALLACE J 2pt FG fast break from turnover in the paint, layup made (2)
04:05				3 HATTIX-COVINGTON M assist (1)
04:05	Timeout 30 Sec			
03:49	2 HALL C 2pt FG in the paint, jump shot missed			
03:45				2 GRIFFITH-WALLACE J defensive rebound (1)
03:37				33 MOTEKAITYTE E 2pt FG in the paint, jump shot missed
03:33	22 BARTRAM B defensive rebound (1)			
03:27	2 HALL C turnover travel (1)			
03:27	1 PEHADZIC E substitution out			
03:27	15 ALEXANDER B substitution in			
03:10				2 GRIFFITH-WALLACE J 3pt FG from turnover, jump shot missed
03:06	5 CHAMBERS Y defensive rebound (3)			
02:58	23 LOVE K 3pt FG , jump shot missed			
02:53	5 CHAMBERS Y offensive rebound (4)			
02:52	15 ALEXANDER B 2pt FG second chance in the paint, layup made (7)	31-33	-2	
02:52	5 CHAMBERS Y assist (1)			
02:36		31-35	-4	1 ROBINSON T 2pt FG outside the paint, jump shot made (16)
02:16	23 LOVE K 2pt FG in the paint, layup made (14)	33-35	-2	
01:58				3 HATTIX-COVINGTON M 3pt FG , jump shot missed
01:55	defensive rebound (21)			
01:55				24 REED T substitution out
01:55				33 MOTEKAITYTE E substitution out



VCU at Vanderbilt

12/17/20 Memorial Gymnasium, Nashville
2020-21 Women's Basketball

Game Time: 2:00 PM

Game Duration: 2:01

Attendance: 46

Officials: Beverly Roberts, Tina Napier, Dawn Marsh

Game Time	Vandy	Score	Diff	VCU
01:55				0 TE-BIASU S substitution in
01:55				13 BLOOM C substitution in
01:55	23 LOVE K substitution out			
01:55	44 BOWMAN E substitution in			
01:37	22 BARTRAM B 3pt FG , jump shot made (9)	36-35	1	
01:37	15 ALEXANDER B assist (1)			
01:09				2 GRIFFITH-WALLACE J 2pt FG outside the paint, jump shot missed
01:04				1 ROBINSON T offensive rebound (5)
01:03		36-38	-2	0 TE-BIASU S 3pt FG second chance, jump shot made (5)
01:03				1 ROBINSON T assist (1)
00:44	15 ALEXANDER B foul drawn (2)			3 HATTIX-COVINGTON M foul shooting (1 - 1)
00:44	15 ALEXANDER B free throw 1 - 2 made (8)	37-38	-1	
00:44	15 ALEXANDER B free throw 2 - 2 made (9)	38-38	0	
00:44	15 ALEXANDER B substitution out			
00:44	1 PEHADZIC E substitution in			
00:33				2 GRIFFITH-WALLACE J substitution out
00:33				24 REED T substitution in
00:30		38-40	-2	24 REED T 2pt FG in the paint, layup made (15)
00:03	22 BARTRAM B 3pt FG , jump shot missed			
00:00	offensive dead ball rebound (2)			
END OF PERIOD				
Vandy 38-40 VCU				



VCU at Vanderbilt

12/17/20 Memorial Gymnasium, Nashville
2020-21 Women's Basketball

Game Time: 2:00 PM
Game Duration: 2:01
Attendance: 46

Officials: Beverly Roberts, Tina Napier, Dawn Marsh

VCU - 24

NO.	Name	F	Min	FG			Rebounds			Fouls		TP	AS	TO	ST	Blocks		+/-
				M-A	3P	FT	OR	DR	TOT	PF	FD					BS	BA	
22	Sydnei Archie	F	00:00															
0	Sarah Te-Biasu	G	07:29	1-2	1-2	0-0	0	1	1	0	0	3	1	0	0	0	0	6
1	Taya Robinson	G	10:00	2-2	1-1	2-2	1	2	3	0	3	7	1	0	0	0	0	6
3	Madison Hattix-Covington	G	05:25	0-1	0-1	0-0	0	0	0	1	1	0	1	0	1	0	0	-5
24	Tera Reed	G	08:39	4-5	1-2	1-1	1	0	1	0	1	10	1	0	1	0	0	8
35	Samantha Robinson		00:59	0-0	0-0	0-0	0	0	0	0	0	0	0	1	0	0	0	-5
2	Janika Griffith-Wallace		08:27	1-4	0-1	0-0	0	1	1	0	0	2	0	0	0	0	0	9
13	Chloe Bloom		04:31	1-2	0-0	0-0	0	1	1	0	0	2	0	0	0	0	0	6
33	Elze Motekaityte		04:30	0-1	0-0	0-0	0	0	0	0	0	0	0	0	0	0	0	5
Team							0	1	1		0		0					
Totals				9-17	3-7	3-3	2	6	8	1	5	24	4	1	2	0	0	6

Shooting By Period		
2 nd FG%	9-17	52.9%
3PT%	3-7	42.9%
FT%	3-3	100%
GM FG%	9-17	52.9%
3PT%	3-7	42.9%
FT%	3-3	100.0%

Dead Ball Rebounds: 0, 0

Technical Fouls::NONE

Vanderbilt - 18

NO.	Name	F	Min	FG			Rebounds			Fouls		TP	AS	TO	ST	Blocks		+/-	
				M-A	3P	FT	OR	DR	TOT	PF	FD					BS	BA		
5	Yaubryon Chambers	F	05:48	0-0	0-0	0-0	1	1	2	0	0	0	1	0	0	0	0	-5	
15	Brinae Alexander	F	04:03	1-3	0-1	2-2	0	1	1	1	1	4	1	0	0	0	0	1	
23	Koi Love	F	08:05	3-4	0-1	0-0	1	0	1	1	0	6	0	1	0	0	0	-6	
1	Enna Pehadzic	G	06:14	1-3	0-2	0-0	0	0	0	0	0	2	1	0	0	0	0	-8	
2	Chelsie Hall	G	07:45	0-2	0-0	0-0	0	0	0	0	0	0	1	1	0	0	0	-8	
0	Bella LaChance		02:15	0-0	0-0	0-0	0	0	0	1	0	0	1	0	0	0	0	2	
22	Brylee Bartram		09:43	2-4	2-4	0-0	0	1	1	0	0	6	0	1	0	0	0	-5	
44	Emily Bowman		06:07	0-0	0-0	0-0	0	0	0	2	0	0	0	0	0	0	0	-1	
Team							0	3	3		0		0						
Totals				7-16	2-8	2-2	2	6	8	5	1	18	5	3	0	0	0	0	-6

Shooting By Period		
2 nd FG%	7-16	43.8%
3PT%	2-8	25.0%
FT%	2-2	100%
GM FG%	7-16	43.8%
3PT%	2-8	25.0%
FT%	2-2	100.0%

Dead Ball Rebounds: 1, 0

Technical Fouls::NONE

	VCU	Vandy
Biggest lead	4 (2 nd 4:05)	11 (2 nd 8:43)
Best Scoring Run	10(2 nd 6:25)	7(2 nd 8:43)
Lead Changes	3	
Times Tied	2	
Time with Lead	03:49	04:47

Points from	VCU	Vandy
Turnovers	2	3
Paint	8	8
Second Chance	6	4
Fast Breaks	4	0
Bench	4	6

Period by Period Scoring					
	1st	2nd	3rd	4th	TOT
VCU	16	24	20	21	81
Vandy	20	18	28	24	90



VCU at Vanderbilt

12/17/20 Memorial Gymnasium, Nashville
2020-21 Women's Basketball

Game Time: 2:00 PM
Game Duration: 2:01
Attendance: 46

Officials: Beverly Roberts, Tina Napier, Dawn Marsh

VCU - 40

NO.	Name	Min	FG			Rebounds			Fouls		TP	AS	TO	ST	Blocks		+/-
			M-A	M-A	M-A	OR	DR	TOT	PF	FD					BS	BA	
22	Sydnei Archie	F 04:54	0-3	0-0	0-0	0	1	1	2	0	0	1	1	0	0	0	-3
0	Sarah Te-Biasu	G 15:24	2-6	1-3	0-0	0	2	2	0	0	5	1	0	0	0	0	6
1	Taya Robinson	G 18:01	6-7	2-3	2-2	2	3	5	1	3	16	1	0	0	0	0	2
3	Madison Hattix-Covington	G 12:58	0-3	0-2	0-0	2	0	2	1	1	0	1	0	1	0	0	-9
24	Tera Reed	G 16:48	6-7	1-2	2-2	2	1	3	1	3	15	1	1	1	0	0	2
2	Janika Griffith-Wallace	12:45	1-5	0-1	0-0	0	1	1	0	0	2	0	1	0	0	0	11
33	Elze Motekaityte	08:20	0-2	0-0	0-0	0	0	0	0	0	0	0	0	0	0	0	7
13	Chloe Bloom	08:35	1-5	0-0	0-0	1	2	3	0	0	2	1	0	0	0	1	2
35	Samantha Robinson	02:15	0-0	0-0	0-0	0	0	0	0	0	0	0	1	0	0	0	-8
Team						0	2	2			0		0				
Totals			16-38	4-11	4-4	7	12	19	5	7	40	6	4	2	0	1	2

Shooting By Period		
1 st FG%	7-21	33.3%
3PT%	1-4	25.0%
FT%	1-1	100%
2 nd FG%	9-17	52.9%
3PT%	3-7	42.9%
FT%	3-3	100%
GM FG%	16-38	42.1%
3PT%	4-11	36.4%
FT%	4-4	100.0%

Dead Ball Rebounds: 0, 0

Technical Fouls::NONE

Vanderbilt - 38

NO.	Name	Min	FG			Rebounds			Fouls		TP	AS	TO	ST	Blocks		+/-
			M-A	M-A	M-A	OR	DR	TOT	PF	FD					BS	BA	
5	Yaubryon Chambers	F 10:12	0-0	0-0	0-0	1	3	4	0	0	0	1	0	0	0	0	-8
15	Brinae Alexander	F 11:36	3-7	0-2	3-4	1	3	4	2	2	9	1	1	0	0	0	5
23	Koi Love	F 16:54	6-8	0-1	2-2	2	1	3	1	3	14	0	3	1	0	0	-5
1	Enna Pehadzic	G 12:41	1-6	0-4	0-0	0	0	0	1	0	2	1	0	0	0	0	-6
2	Chelsie Hall	G 17:45	2-6	0-0	0-0	1	4	5	0	0	4	4	1	0	0	0	-4
22	Brylee Bartram	16:54	3-6	3-6	0-0	0	1	1	0	0	9	0	1	0	0	0	0
44	Emily Bowman	11:43	0-1	0-0	0-0	1	0	1	2	0	0	0	0	0	1	0	6
0	Bella LaChance	02:15	0-0	0-0	0-0	0	0	0	1	0	0	1	0	0	0	0	2
Team						0	3	3			0		0				
Totals			15-34	3-13	5-6	6	15	21	7	5	38	8	6	1	1	0	-2

Shooting By Period		
1 st FG%	8-18	44.4%
3PT%	1-5	20.0%
FT%	3-4	75%
2 nd FG%	7-16	43.8%
3PT%	2-8	25.0%
FT%	2-2	100%
GM FG%	15-34	44.1%
3PT%	3-13	23.1%
FT%	5-6	83.3%

Dead Ball Rebounds: 2, 0

Technical Fouls::NONE

	VCU	Vandy
Biggest lead	4 (2 nd 4:05)	11 (2 nd 8:43)
Best Scoring Run	10 (2 nd 6:25)	9 (1 st 0:16)
Lead Changes	9	
Times Tied	3	
Time with Lead	09:27	07:41

Points from	VCU	Vandy
Turnovers	2	8
Paint	20	22
Second Chance	9	10
Fast Breaks	8	4
Bench	4	9

	Period by Period Scoring				
	1st	2nd	3rd	4th	TOT
VCU	16	24	20	21	81
Vandy	20	18	28	24	90



VCU at Vanderbilt

12/17/20 Memorial Gymnasium, Nashville
2020-21 Women's Basketball

Game Time: 2:00 PM
Game Duration: 2:01
Attendance: 46

Officials: Beverly Roberts, Tina Napier, Dawn Marsh

Period 3

Quarter Starters:

Vandy	1 Pehadzic E	2 Hall C	15 Alexander B	23 Love K	44 Bowman E
VCU	0 Te-Biasu S	1 Robinson T	3 Hattix-Covington M	22 Archie S	24 Reed T

Game Time	Vandy	Score	Diff	VCU
10:00	5 CHAMBERS Y substitution out			
10:00	22 BARTRAM B substitution out			
10:00	15 ALEXANDER B substitution in			
10:00	23 LOVE K substitution in			
10:00				13 BLOOM C substitution out
10:00				22 ARCHIE S substitution in
09:40		38-42	-4	22 ARCHIE S 2pt FG outside the paint, jump shot made (2)
09:40				24 REED T assist (2)
09:13	15 ALEXANDER B 3pt FG , jump shot missed			
09:10				defensive rebound (20)
08:55	44 BOWMAN E foul shooting (3 - 1)			22 ARCHIE S foul drawn (1)
08:55				22 ARCHIE S free throw 1 - 2 missed
08:55				offensive dead ball rebound (1)
08:55		38-43	-5	22 ARCHIE S free throw 2 - 2 made (3)
08:39	15 ALEXANDER B 2pt FG in the paint, layup made (11)	40-43	-3	
08:39	2 HALL C assist (5)			
08:39	15 ALEXANDER B foul drawn (3)			1 ROBINSON T foul shooting (2 - 1)
08:39	15 ALEXANDER B free throw 1 - 1 made (12)	41-43	-2	
08:30				3 HATTIX-COVINGTON M 2pt FG in the paint, layup blocked
08:30	44 BOWMAN E block (2)			
08:30				offensive rebound (21)
08:23				1 ROBINSON T 3pt FG second chance, jump shot missed
08:20	1 PEHADZIC E defensive rebound (1)			
08:14	23 LOVE K 2pt FG in the paint, driving layup made (16)	43-43	0	
07:59	44 BOWMAN E foul shooting (4 - 2)			24 REED T foul drawn (4)
07:59	44 BOWMAN E substitution out			
07:59	5 CHAMBERS Y substitution in			
07:59		43-44	-1	24 REED T free throw 1 - 2 made (16)
07:59		43-45	-2	24 REED T free throw 2 - 2 made (17)
07:46	15 ALEXANDER B 2pt FG in the paint, layup blocked			
07:46				3 HATTIX-COVINGTON M block (1)
07:39				1 ROBINSON T defensive rebound (6)
07:29		43-47	-4	22 ARCHIE S 2pt FG in the paint, layup made (5)
07:29	5 CHAMBERS Y foul shooting (1 - 3)			22 ARCHIE S foul drawn (2)
07:29				22 ARCHIE S free throw 1 - 1 missed
07:26	defensive rebound (23)			
07:12	23 LOVE K 2pt FG in the paint, layup made (18)	45-47	-2	
07:12	23 LOVE K foul drawn (4)			22 ARCHIE S foul shooting (3 - 2)
07:12				22 ARCHIE S substitution out
07:12				13 BLOOM C substitution in
07:12	23 LOVE K free throw 1 - 1 made (19)	46-47	-1	
06:57		46-50	-4	0 TE-BIASU S 3pt FG , jump shot made (8)
06:57				1 ROBINSON T assist (2)



VCU at Vanderbilt

12/17/20 Memorial Gymnasium, Nashville
2020-21 Women's Basketball

Game Time: 2:00 PM
Game Duration: 2:01
Attendance: 46

Officials: Beverly Roberts, Tina Napier, Dawn Marsh

Game Time	Vandy	Score	Diff	VCU
06:42	15 ALEXANDER B 2pt FG outside the paint, jump shot made (14)	48-50	-2	
06:25				24 REED T 2pt FG in the paint, floating jump shot missed
06:20	15 ALEXANDER B defensive rebound (5)			
06:19	2 HALL C foul offensive (1 - 4)			3 HATTIX-COVINGTON M foul drawn (2)
06:19	2 HALL C turnover offensive (2)			
06:02				0 TE-BIASU S 3pt FG from turnover, jump shot missed
05:59	1 PEHADZIC E defensive rebound (2)			
05:48	1 PEHADZIC E foul drawn (1)			24 REED T foul shooting (2 - 3)
05:48	1 PEHADZIC E free throw 1 - 2 missed			
05:48	offensive dead ball rebound (3)			
05:48	1 PEHADZIC E free throw 2 - 2 made (3)	49-50	-1	
05:19				24 REED T 3pt FG , jump shot missed
05:15				1 ROBINSON T offensive rebound (7)
05:15	1 PEHADZIC E foul drawn (2)			1 ROBINSON T foul offensive (3 - 4)
05:15				1 ROBINSON T turnover offensive (1)
05:15	1 PEHADZIC E substitution out			
05:15	22 BARTRAM B substitution in			
05:15				1 ROBINSON T substitution out
05:15				2 GRIFFITH-WALLACE J substitution in
05:08	5 CHAMBERS Y turnover travel (1)			
04:58	23 LOVE K foul personal (2 - 5)			3 HATTIX-COVINGTON M foul drawn (3)
04:58	Timeout media			
04:58				3 HATTIX-COVINGTON M free throw 1 - 2 missed
04:58				offensive dead ball rebound (2)
04:58		49-51	-2	3 HATTIX-COVINGTON M free throw 2 - 2 made (1)
04:37	15 ALEXANDER B 2pt FG in the paint, layup made (16)	51-51	0	
04:16				13 BLOOM C turnover bad pass (1)
04:10	23 LOVE K 2pt FG fast break from turnover in the paint, layup made (21)	53-51	2	
03:49				13 BLOOM C 2pt FG in the paint, jump shot blocked
03:49	5 CHAMBERS Y block (1)			
03:49				offensive rebound (24)
03:49	5 CHAMBERS Y substitution out			
03:49	1 PEHADZIC E substitution in			
03:49				13 BLOOM C substitution out
03:49				1 ROBINSON T substitution in
03:38				22 ARCHIE S substitution in
03:38				0 TE-BIASU S substitution out
03:38		53-53	0	22 ARCHIE S 2pt FG second chance in the paint, layup made (7)
03:38				24 REED T assist (3)
03:20	2 HALL C 3pt FG , jump shot made (7)	56-53	3	
03:20	15 ALEXANDER B assist (2)			
03:07	15 ALEXANDER B foul shooting (3 - 6)			2 GRIFFITH-WALLACE J foul drawn (1)
03:07		56-54	2	2 GRIFFITH-WALLACE J free throw 1 - 2 made (3)
03:07		56-55	1	2 GRIFFITH-WALLACE J free throw 2 - 2 made (4)
02:52	1 PEHADZIC E 3pt FG , jump shot missed			
02:49				1 ROBINSON T defensive rebound (8)
02:38		56-57	-1	24 REED T 2pt FG in the paint, layup made (19)



VCU at Vanderbilt

12/17/20 Memorial Gymnasium, Nashville
2020-21 Women's Basketball

Game Time: 2:00 PM
Game Duration: 2:01
Attendance: 46

Officials: Beverly Roberts, Tina Napier, Dawn Marsh

Game Time	Vandy	Score	Diff	VCU
02:22	1 PEHADZIC E 2pt FG outside the paint, jump shot made (5)	58-57	1	
02:22	2 HALL C assist (6)			
02:06	23 LOVE K foul shooting (3 - 7)			1 ROBINSON T foul drawn (4)
02:06				1 ROBINSON T free throw 1 - 2 missed
02:06				offensive dead ball rebound (3)
02:06		58-58	0	1 ROBINSON T free throw 2 - 2 made (17)
01:53	1 PEHADZIC E 2pt FG in the paint, layup missed			
01:53	offensive rebound (26)			
01:53	23 LOVE K substitution out			
01:53	5 CHAMBERS Y substitution in			
01:40	22 BARTRAM B 3pt FG second chance, jump shot made (12)	61-58	3	
01:18				1 ROBINSON T 2pt FG in the paint, layup missed
01:16				3 HATTIX-COVINGTON M offensive rebound (3)
01:15	1 PEHADZIC E steal (1)			3 HATTIX-COVINGTON M turnover lost ball (1)
00:59	1 PEHADZIC E 3pt FG from turnover, jump shot made (8)	64-58	6	
00:59	2 HALL C assist (7)			
00:38		64-60	4	2 GRIFFITH-WALLACE J 2pt FG in the paint, layup made (6)
00:05	2 HALL C 2pt FG in the paint, jump shot missed			
00:01	2 HALL C offensive rebound (6)			
00:00	2 HALL C 2pt FG second chance in the paint, layup made (9)	66-60	6	
END OF PERIOD				
Vandy 66-60 VCU				



VCU at Vanderbilt

12/17/20 Memorial Gymnasium, Nashville
2020-21 Women's Basketball

Game Time: 2:00 PM
Game Duration: 2:01
Attendance: 46

Officials: Beverly Roberts, Tina Napier, Dawn Marsh

VCU - 20

NO.	Name	Min	FG			Rebounds			Fouls		TP	AS	TO	ST	Blocks		+/-
			M-A	3P	FT	OR	DR	TOT	PF	FD					BS	BA	
22	Sydnei Archie	F 06:26	3-3	0-0	1-3	0	0	0	1	2	7	0	0	0	0	0	-4
0	Sarah Te-Biasu	G 06:22	1-2	1-2	0-0	0	0	0	0	0	3	0	0	0	0	0	-4
1	Taya Robinson	G 08:34	0-2	0-1	1-2	1	2	3	2	1	1	1	1	0	0	0	-5
3	Madison Hattix-Covington	G 10:00	0-1	0-0	1-2	1	0	1	0	2	1	0	1	0	1	1	-8
24	Tera Reed	G 10:00	1-3	0-1	2-2	0	0	0	1	1	4	2	0	0	0	0	-8
13	Chloe Bloom	03:23	0-1	0-0	0-0	0	0	0	0	0	0	0	1	0	0	1	-4
2	Janika Griffith-Wallace	05:15	1-1	0-0	2-2	0	0	0	0	1	4	0	0	0	0	0	-7
Team						2	1	3			0	0					
Totals			6-13	1-4	7-11	4	3	7	4	7	20	3	3	0	1	2	-8

Shooting By Period		
3 rd FG%	6-13	46.2%
3PT%	1-4	25.0%
FT%	7-11	63.6%
GM FG%	6-13	46.2%
3PT%	1-4	25.0%
FT%	7-11	63.6%

Dead Ball Rebounds: 3, 0

Technical Fouls::NONE

Vanderbilt - 28

NO.	Name	Min	FG			Rebounds			Fouls		TP	AS	TO	ST	Blocks		+/-
			M-A	3P	FT	OR	DR	TOT	PF	FD					BS	BA	
5	Yaubryon Chambers	F 06:03	0-0	0-0	0-0	0	0	0	1	0	0	0	1	0	1	0	8
15	Brinae Alexander	F 10:00	3-5	0-1	1-1	0	1	1	1	1	7	1	0	0	0	1	8
23	Koi Love	F 08:07	3-3	0-0	1-1	0	0	0	2	1	7	0	0	0	0	0	2
1	Enna Pehadzic	G 08:34	2-4	1-2	1-2	0	2	2	0	2	6	0	0	1	0	0	5
2	Chelsie Hall	G 10:00	2-3	1-1	0-0	1	0	1	1	0	5	3	1	0	0	0	8
44	Emily Bowman	02:01	0-0	0-0	0-0	0	0	0	2	0	0	0	0	0	1	0	2
22	Brylee Bartram	05:15	1-1	1-1	0-0	0	0	0	0	0	3	0	0	0	0	0	7
Team						1	1	2			0	0					
Totals			11-16	3-5	3-4	2	4	6	7	4	28	4	2	1	2	1	8

Shooting By Period		
3 rd FG%	11-16	68.8%
3PT%	3-5	60.0%
FT%	3-4	75%
GM FG%	11-16	68.8%
3PT%	3-5	60.0%
FT%	3-4	75.0%

Dead Ball Rebounds: 1, 0

Technical Fouls::NONE

	VCU	Vandy
Biggest lead	5 (3 rd 8:55)	6 (3 rd 0:59)
Best Scoring Run	4(3 rd 7:29)	6(3 rd 0:59)
Lead Changes	3	
Times Tied	4	
Time with Lead	05:04	03:10

Points from	VCU	Vandy
Turnovers	1	5
Paint	8	12
Second Chance	2	5
Fast Breaks	0	2
Bench	4	3

	Period by Period Scoring				
	1st	2nd	3rd	4th	TOT
VCU	16	24	20	21	81
Vandy	20	18	28	24	90



VCU at Vanderbilt

12/17/20 Memorial Gymnasium, Nashville
2020-21 Women's Basketball

Game Time: 2:00 PM
Game Duration: 2:01
Attendance: 46

Officials: Beverly Roberts, Tina Napier, Dawn Marsh

Period 4

Quarter Starters:

Vandy	1 Pehadzic E	2 Hall C	5 Chambers Y	22 Bartram B	23 Love K
VCU	0 Te-Biasu S	1 Robinson T	2 Griffith-Wallace J	24 Reed T	33 Motekaityte E

Game Time	Vandy	Score	Diff	VCU
10:00	15 ALEXANDER B substitution out			
10:00	23 LOVE K substitution in			
10:00				3 HATTIX-COVINGTON M substitution out
10:00				22 ARCHIE S substitution out
10:00				0 TE-BIASU S substitution in
10:00				33 MOTEKAITYTE E substitution in
09:43	23 LOVE K foul drawn (5)			1 ROBINSON T foul personal (4 - 1)
09:43				1 ROBINSON T substitution out
09:43				22 ARCHIE S substitution in
09:38	23 LOVE K 2pt FG in the paint, layup made (23)	68-60	8	
09:38	23 LOVE K foul drawn (6)			33 MOTEKAITYTE E foul shooting (1 - 2)
09:38	23 LOVE K free throw 1 - 1 missed			
09:38				22 ARCHIE S defensive rebound (2)
09:21				33 MOTEKAITYTE E turnover bad pass (1)
09:21	5 CHAMBERS Y substitution out			
09:21	15 ALEXANDER B substitution in			
09:08	15 ALEXANDER B foul drawn (4)			33 MOTEKAITYTE E foul shooting (2 - 3)
09:08				33 MOTEKAITYTE E substitution out
09:08				3 HATTIX-COVINGTON M substitution in
09:08	15 ALEXANDER B free throw 1 - 2 missed			
09:08	offensive dead ball rebound (4)			
09:08	15 ALEXANDER B free throw 2 - 2 made (17)	69-60	9	
09:00				Timeout 30 Sec
09:00				Timeout media
08:49				0 TE-BIASU S 2pt FG in the paint, layup missed
08:46				22 ARCHIE S offensive rebound (3)
08:44		69-62	7	22 ARCHIE S 2pt FG second chance in the paint, layup made (9)
08:39	1 PEHADZIC E turnover bad pass (1)			24 REED T steal (2)
08:27		69-64	5	22 ARCHIE S 2pt FG from turnover in the paint, jump shot made (11)
08:27				2 GRIFFITH-WALLACE J assist (1)
08:12	23 LOVE K 3pt FG , jump shot missed			
08:09				3 HATTIX-COVINGTON M defensive rebound (4)
08:00		69-66	3	22 ARCHIE S 2pt FG in the paint, layup made (13)
08:00				2 GRIFFITH-WALLACE J assist (2)
08:00	Timeout 30 Sec			
08:00				Timeout media
08:00	1 PEHADZIC E substitution out			
08:00	5 CHAMBERS Y substitution in			
07:41	2 HALL C turnover bad pass (3)			2 GRIFFITH-WALLACE J steal (1)
07:36		69-68	1	24 REED T 2pt FG fast break from turnover in the paint, layup made (21)
07:36				2 GRIFFITH-WALLACE J assist (3)



VCU at Vanderbilt

12/17/20 Memorial Gymnasium, Nashville
2020-21 Women's Basketball

Game Time: 2:00 PM
Game Duration: 2:01
Attendance: 46

Officials: Beverly Roberts, Tina Napier, Dawn Marsh

Game Time	Vandy	Score	Diff	VCU
07:15	15 ALEXANDER B 2pt FG in the paint, jump shot blocked			
07:15				3 HATTIX-COVINGTON M block (2)
07:10	15 ALEXANDER B offensive rebound (6)			
07:09	15 ALEXANDER B 2pt FG second chance in the paint, layup missed			
07:06				3 HATTIX-COVINGTON M defensive rebound (5)
07:05	23 LOVE K steal (2)			3 HATTIX-COVINGTON M turnover lost ball (2)
06:53	2 HALL C 2pt FG from turnover in the paint, layup missed			
06:51	5 CHAMBERS Y offensive rebound (5)			
06:50	5 CHAMBERS Y 2pt FG from turnover second chance in the paint, layup made (2)	71-68	3	
06:30		71-71	0	0 TE-BIASU S 3pt FG , jump shot made (11)
06:30				24 REED T assist (4)
06:05	23 LOVE K 2pt FG in the paint, layup made (25)	73-71	2	
05:56				3 HATTIX-COVINGTON M 2pt FG in the paint, layup missed
05:54	2 HALL C defensive rebound (7)			
05:42	23 LOVE K 3pt FG , jump shot made (28)	76-71	5	
05:42	15 ALEXANDER B assist (3)			
05:30				Timeout 30 Sec
05:30	23 LOVE K substitution out			
05:30	1 PEHADZIC E substitution in			
05:30				3 HATTIX-COVINGTON M substitution out
05:30				1 ROBINSON T substitution in
05:15		76-73	3	2 GRIFFITH-WALLACE J 2pt FG in the paint, driving layup made (8)
04:51	22 BARTRAM B 3pt FG , jump shot made (15)	79-73	6	
04:51	1 PEHADZIC E assist (2)			
04:33				22 ARCHIE S 2pt FG in the paint, layup missed
04:31				1 ROBINSON T offensive rebound (9)
04:28				0 TE-BIASU S 3pt FG second chance, jump shot missed
04:23	15 ALEXANDER B defensive rebound (7)			
04:18	1 PEHADZIC E 3pt FG , jump shot missed			
04:15				0 TE-BIASU S defensive rebound (3)
04:11	2 HALL C foul shooting (2 - 1)			0 TE-BIASU S foul drawn (1)
04:11	1 PEHADZIC E substitution out			
04:11	23 LOVE K substitution in			
04:11				1 ROBINSON T substitution out
04:11				3 HATTIX-COVINGTON M substitution in
04:11				0 TE-BIASU S free throw fast break 1 - 2 missed
04:11				offensive dead ball rebound (4)
04:11		79-74	5	0 TE-BIASU S free throw fast break 2 - 2 made (12)
03:46	5 CHAMBERS Y 2pt FG in the paint, layup made (4)	81-74	7	
03:46	15 ALEXANDER B assist (4)			
03:38				0 TE-BIASU S 3pt FG , jump shot missed
03:34	15 ALEXANDER B defensive rebound (8)			
03:28	22 BARTRAM B 3pt FG , jump shot missed			
03:23	15 ALEXANDER B offensive rebound (9)			
03:22	15 ALEXANDER B 2pt FG second chance in the paint, layup missed			
03:19				0 TE-BIASU S defensive rebound (4)



VCU at Vanderbilt

12/17/20 Memorial Gymnasium, Nashville
2020-21 Women's Basketball

Game Time: 2:00 PM
Game Duration: 2:01
Attendance: 46

Officials: Beverly Roberts, Tina Napier, Dawn Marsh

Game Time	Vandy	Score	Diff	VCU
03:16				2 GRIFFITH-WALLACE J substitution out
03:16				1 ROBINSON T substitution in
03:16	15 ALEXANDER B substitution out			
03:16	1 PEHADZIC E substitution in			
03:14		81-76	5	3 HATTIX-COVINGTON M 2pt FG in the paint, layup made (3)
03:14				0 TE-BIASU S assist (2)
02:50	1 PEHADZIC E turnover bad pass (2)			3 HATTIX-COVINGTON M steal (2)
02:49	1 PEHADZIC E foul personal (2 - 2)			3 HATTIX-COVINGTON M foul drawn (4)
02:40	5 CHAMBERS Y foul shooting (2 - 3)			1 ROBINSON T foul drawn (5)
02:40		81-77	4	1 ROBINSON T free throw 1 - 2 made (18)
02:40		81-78	3	1 ROBINSON T free throw 2 - 2 made (19)
02:40	1 PEHADZIC E substitution out			
02:40	15 ALEXANDER B substitution in			
02:15	22 BARTRAM B 3pt FG , jump shot made (18)	84-78	6	
02:15	2 HALL C assist (8)			
01:50	5 CHAMBERS Y foul personal (3 - 4)			22 ARCHIE S foul drawn (3)
01:50				Timeout 30 Sec
01:47	23 LOVE K foul shooting (4 - 5)			1 ROBINSON T foul drawn (6)
01:47				1 ROBINSON T free throw 1 - 2 missed
01:47				offensive dead ball rebound (5)
01:47		84-79	5	1 ROBINSON T free throw 2 - 2 made (20)
01:20	15 ALEXANDER B 3pt FG , jump shot made (20)	87-79	8	
01:20	2 HALL C assist (9)			
01:07				0 TE-BIASU S 2pt FG in the paint, layup missed
01:04	23 LOVE K defensive rebound (4)			
01:04				1 ROBINSON T substitution out
01:04				2 GRIFFITH-WALLACE J substitution in
00:56	15 ALEXANDER B turnover bad pass (2)			0 TE-BIASU S steal (1)
00:50	15 ALEXANDER B steal (1)			22 ARCHIE S turnover bad pass (2)
00:47	15 ALEXANDER B turnover lost ball (3)			3 HATTIX-COVINGTON M steal (3)
00:45				3 HATTIX-COVINGTON M 2pt FG from turnover in the paint, layup missed
00:44				3 HATTIX-COVINGTON M offensive rebound (6)
00:44	jump ball situation			
00:30				3 HATTIX-COVINGTON M 3pt FG second chance, jump shot missed
00:26				22 ARCHIE S offensive rebound (4)
00:24				24 REED T 2pt FG second chance in the paint, layup blocked
00:24	5 CHAMBERS Y block (2)			
00:24				offensive dead ball rebound (6)
00:24				turnover shot clock (11)
00:24	Timeout 60 Sec			
00:24				2 GRIFFITH-WALLACE J substitution out
00:24				1 ROBINSON T substitution in
00:23				2 GRIFFITH-WALLACE J substitution in
00:23				3 HATTIX-COVINGTON M substitution out
00:23	23 LOVE K foul drawn (7)			24 REED T foul personal (3 - 4)
00:19	23 LOVE K foul drawn (8)			22 ARCHIE S foul shooting (4 - 5)
00:19	23 LOVE K free throw fast break 1 - 2 made (29)	88-79	9	
00:19	23 LOVE K free throw fast break 2 - 2 missed			



VCU at Vanderbilt

12/17/20 Memorial Gymnasium, Nashville
2020-21 Women's Basketball

Game Time: 2:00 PM

Game Duration: 2:01

Attendance: 46

Officials: Beverly Roberts, Tina Napier, Dawn Marsh

Game Time	Vandy	Score	Diff	VCU
00:19				1 ROBINSON T defensive rebound (10)
00:12		88-81	7	2 GRIFFITH-WALLACE J 2pt FG in the paint, jump shot made (10)
00:10	2 HALL C foul drawn (1)			0 TE-BIASU S foul personal (1 - 6)
00:10	2 HALL C free throw fast break 1 - 2 made (10)	89-81	8	
00:10	2 HALL C free throw fast break 2 - 2 made (11)	90-81	9	
00:10				Timeout 60 Sec
00:02				1 ROBINSON T 3pt FG , jump shot missed
00:00	22 BARTRAM B defensive rebound (2)			
END OF GAME				
Vandy 90-81 VCU				



VCU at Vanderbilt

12/17/20 Memorial Gymnasium, Nashville
2020-21 Women's Basketball

Game Time: 2:00 PM
Game Duration: 2:01
Attendance: 46

Officials: Beverly Roberts, Tina Napier, Dawn Marsh

VCU - 21

NO.	Name	F	Min	FG			Rebounds			Fouls		TP	AS	TO	ST	Blocks		+/-
				M-A	M-A	M-A	OR	DR	TOT	PF	FD					BS	BA	
22	Sydnei Archie	F	09:43	3-4	0-0	0-0	2	1	3	1	1	6	0	1	0	0	0	-3
0	Sarah Te-Biasu	G	10:00	1-5	1-3	1-2	0	2	2	1	1	4	1	0	1	0	0	-3
1	Taya Robinson	G	04:13	0-1	0-1	3-4	1	1	2	1	2	3	0	0	0	0	0	-3
3	Madison Hattix-Covington	G	07:25	1-4	0-1	0-0	1	2	3	0	1	2	0	1	2	1	0	1
24	Tera Reed	G	10:00	1-2	0-0	0-0	0	0	0	1	0	2	1	0	1	0	1	-3
33	Elze Motekaityte		00:52	0-0	0-0	0-0	0	0	0	2	0	0	0	1	0	0	0	-2
2	Janika Griffith-Wallace		07:47	2-2	0-0	0-0	0	0	0	0	0	4	3	0	1	0	0	-2
Team							0	0	0			0		1				
Totals				8-18	1-5	4-6	4	6	10	6	5	21	5	4	5	1	1	-3

Shooting By Period		
4 th FG%	8-18	44.4%
3PT%	1-5	20.0%
FT%	4-6	66.7%
GM FG%	8-18	44.4%
3PT%	1-5	20.0%
FT%	4-6	66.7%

Dead Ball Rebounds: 3, 0

Technical Fouls::NONE

Vanderbilt - 24

NO.	Name	F	Min	FG			Rebounds			Fouls		TP	AS	TO	ST	Blocks		+/-
				M-A	M-A	M-A	OR	DR	TOT	PF	FD					BS	BA	
5	Yaubryon Chambers	F	08:39	2-2	0-0	0-0	1	0	1	2	0	4	0	0	0	1	0	8
15	Brinae Alexander	F	08:45	1-4	1-1	1-2	2	2	4	0	1	4	2	2	1	0	1	5
23	Koi Love	F	08:41	3-4	1-2	1-3	0	1	1	1	4	8	0	0	1	0	0	2
1	Enna Pehadzic	G	03:55	0-1	0-1	0-0	0	0	0	1	0	0	1	2	0	0	0	-6
2	Chelsie Hall	G	10:00	0-1	0-0	2-2	0	1	1	1	1	2	2	1	0	0	0	3
22	Brylee Bartram		10:00	2-3	2-3	0-0	0	1	1	0	0	6	0	0	0	0	0	3
Team							0	0	0			0		0				
Totals				8-15	4-7	4-7	3	5	8	5	6	24	5	5	2	1	1	3

Shooting By Period		
4 th FG%	8-15	53.3%
3PT%	4-7	57.1%
FT%	4-7	57.1%
GM FG%	8-15	53.3%
3PT%	4-7	57.1%
FT%	4-7	57.1%

Dead Ball Rebounds: 1, 0

Technical Fouls::NONE

	VCU	Vandy
Biggest lead	0 (1 st 10:00)	9 (4 th 9:08)
Best Scoring Run	8(4 th 7:36)	5(4 th 5:42)
Lead Changes	0	
Times Tied	1	
Time with Lead	00:00	09:13

Points from	VCU	Vandy
Turnovers	6	4
Paint	14	8
Second Chance	2	2
Fast Breaks	3	3
Bench	4	6

	Period by Period Scoring				
	1st	2nd	3rd	4th	TOT
VCU	16	24	20	21	81
Vandy	20	18	28	24	90



VCU at Vanderbilt

12/17/20 Memorial Gymnasium, Nashville
2020-21 Women's Basketball

Game Time: 2:00 PM
Game Duration: 2:01
Attendance: 46

Officials: Beverly Roberts, Tina Napier, Dawn Marsh

VCU - 41

NO.	Name	Min	FG			Rebounds			Fouls		TP	AS	TO	ST	Blocks		+/-
			M-A	3P	FT	OR	DR	TOT	PF	FD					BS	BA	
22	Sydnei Archie	F 16:09	6-7	0-0	1-3	2	1	3	2	3	13	0	1	0	0	0	-7
0	Sarah Te-Biasu	G 16:22	2-7	2-5	1-2	0	2	2	1	1	7	1	0	1	0	0	-7
1	Taya Robinson	G 12:47	0-3	0-2	4-6	2	3	5	3	3	4	1	1	0	0	0	-8
3	Madison Hattix-Covington	G 17:25	1-5	0-1	1-2	2	2	4	0	3	3	0	2	2	2	1	-7
24	Tera Reed	G 20:00	2-5	0-1	2-2	0	0	0	2	1	6	3	0	1	0	1	-11
13	Chloe Bloom	03:23	0-1	0-0	0-0	0	0	0	0	0	0	0	1	0	0	1	-4
2	Janika Griffith-Wallace	13:02	3-3	0-0	2-2	0	0	0	0	1	8	3	0	1	0	0	-9
33	Elze Motekaityte	00:52	0-0	0-0	0-0	0	0	0	2	0	0	0	1	0	0	0	-2
Team						2	1	3			0		1				
Totals			14-31	2-9	11-17	8	9	17	10	12	41	8	7	5	2	3	-11

Shooting By Period		
3 rd FG%	6-13	46.2%
3PT%	1-4	25.0%
FT%	7-11	63.6%
4 th FG%	8-18	44.4%
3PT%	1-5	20.0%
FT%	4-6	66.7%
GM FG%	14-31	45.2%
3PT%	2-9	22.2%
FT%	11-17	64.7%

Dead Ball Rebounds: 6, 0

Technical Fouls::NONE

Vanderbilt - 52

NO.	Name	Min	FG			Rebounds			Fouls		TP	AS	TO	ST	Blocks		+/-
			M-A	3P	FT	OR	DR	TOT	PF	FD					BS	BA	
5	Yaubryon Chambers	F 14:42	2-2	0-0	0-0	1	0	1	3	0	4	0	1	0	2	0	16
15	Brinae Alexander	F 18:45	4-9	1-2	2-3	2	3	5	1	2	11	3	2	1	0	2	13
23	Koi Love	F 16:48	6-7	1-2	2-4	0	1	1	3	5	15	0	0	1	0	0	4
1	Enna Pehadzic	G 12:29	2-5	1-3	1-2	0	2	2	1	2	6	1	2	1	0	0	-1
2	Chelsie Hall	G 20:00	2-4	1-1	2-2	1	1	2	2	1	7	5	2	0	0	0	11
44	Emily Bowman	02:01	0-0	0-0	0-0	0	0	0	2	0	0	0	0	0	1	0	2
22	Brylee Bartram	15:15	3-4	3-4	0-0	0	1	1	0	0	9	0	0	0	0	0	10
Team						1	1	2			0		0				
Totals			19-31	7-12	7-11	5	9	14	12	10	52	9	7	3	3	2	11

Shooting By Period		
3 rd FG%	11-16	68.8%
3PT%	3-5	60.0%
FT%	3-4	75%
4 th FG%	8-15	53.3%
3PT%	4-7	57.1%
FT%	4-7	57.1%
GM FG%	19-31	61.3%
3PT%	7-12	58.3%
FT%	7-11	63.6%

Dead Ball Rebounds: 2, 0

Technical Fouls::NONE

	VCU	Vandy
Biggest lead	5 (3 rd 8:55)	9 (4 th 9:08)
Best Scoring Run	8(4 th 7:36)	6(3 rd 0:59)
Lead Changes	3	
Times Tied	5	
Time with Lead	05:04	12:45

Points from	VCU	Vandy
Turnovers	7	9
Paint	22	20
Second Chance	4	7
Fast Breaks	3	5
Bench	8	9

	Period by Period Scoring				
	1st	2nd	3rd	4th	TOT
VCU	16	24	20	21	81
Vandy	20	18	28	24	90



VCU at Vanderbilt

12/17/20 Memorial Gymnasium, Nashville
2020-21 Women's Basketball

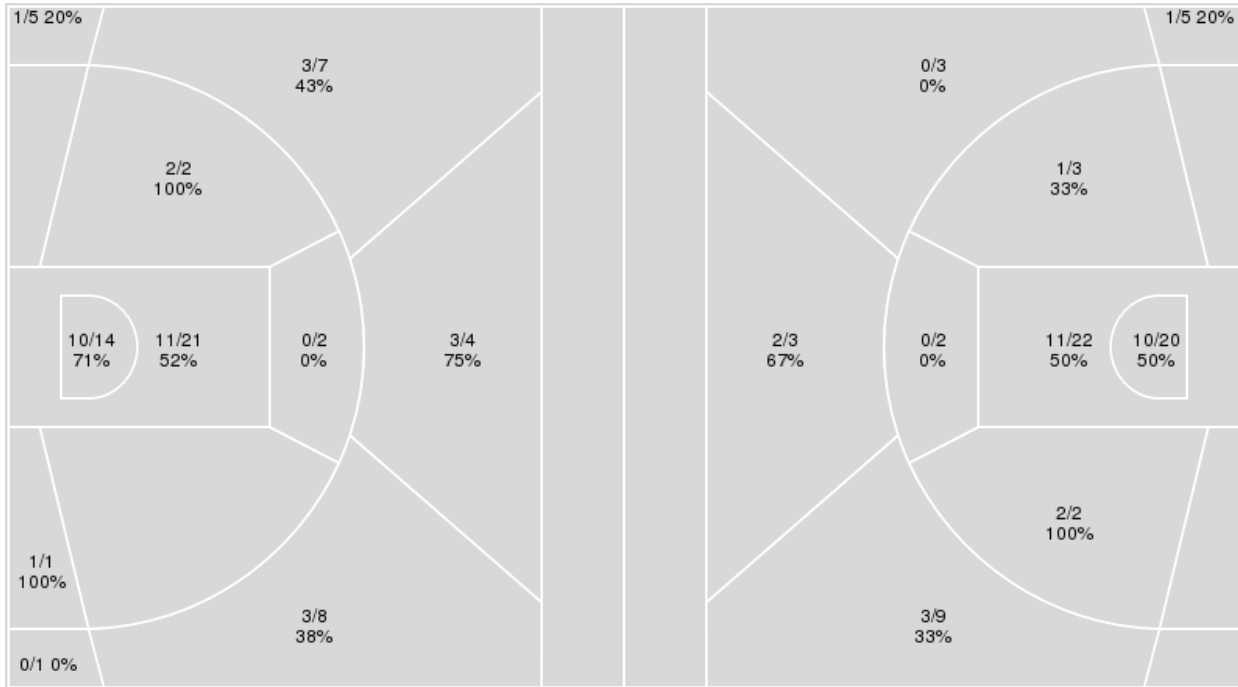
Officials: Beverly Roberts, Tina Napier, Dawn Marsh

{ Players => 0, 1, 2, 3, 5, 12, 15, 22, 23, 24, 25, 33, 44, 50; } FG Types
=> All; Results => All;

{ Players => 0, 1, 2, 3, 5, 11, 12, 13, 15, 20, 22, 23, 24, 25, 33, 35, 54; }
FG Types => All; Results => All;

Vanderbilt

VCU



Vanderbilt	M/A	%
Field Goals	34/65	52
2 Points	24/40	60
3 Points	10/25	40
Free Throws	12/17	71

VCU	M/A	%
Field Goals	30/69	43
2 Points	24/49	49
3 Points	6/20	30
Free Throws	15/21	71



VCU at Vanderbilt

12/17/20 Memorial Gymnasium, Nashville
2020-21 Women's Basketball

Game Time: 2:00 PM
Game Duration: 2:01
Attendance: 46

Officials: Beverly Roberts, Tina Napier, Dawn Marsh

VCU

No	Name	Mins		Score		Points Diff		Points per Min		Assists		Rebounds		Steals		Turnovers	
		On	Off	On	Off	On	Off	On	Off	On	Off	On	Off	On	Off	On	Off
0	Sarah Te-Biasu	31:46	08:14	66 - 67	15 - 23	-1	-8	2.08	1.82	11	3	32	4	6	1	9	2
1	Taya Robinson	30:48	09:12	66 - 72	15 - 18	-6	-3	2.14	1.63	10	4	24	12	3	4	6	5
2	Janika Griffith-Wallace	25:47	14:13	54 - 52	27 - 38	2	-11	2.09	1.90	9	5	26	10	6	1	7	4
3	Madison Hattix-Covington	30:23	09:37	58 - 74	23 - 16	-16	7	1.91	2.39	12	2	23	13	6	1	9	2
13	Chloe Bloom	11:58	28:02	21 - 23	60 - 67	-2	-7	1.75	2.14	5	9	12	24	0	7	3	8
22	Sydnei Archie	21:03	18:57	45 - 55	36 - 35	-10	1	2.14	1.90	9	5	21	15	5	2	7	4
24	Tera Reed	36:48	03:12	76 - 85	5 - 5	-9	0	2.07	1.56	13	1	33	3	7	0	11	0
33	Elze Motekaityte	09:12	30:48	17 - 12	64 - 78	5	-14	1.85	2.08	1	13	9	27	2	5	2	9
35	Samantha Robinson	02:15	37:45	2 - 10	79 - 80	-8	-1	0.89	2.09	0	14	0	36	0	7	1	10

Vanderbilt

No	Name	Mins		Score		Points Diff		Points per Min		Assists		Rebounds		Steals		Turnovers	
		On	Off	On	Off	On	Off	On	Off	On	Off	On	Off	On	Off	On	Off
0	Bella LaChance	02:15	37:45	7 - 5	83 - 76	2	7	3.11	2.20	2	15	1	34	0	4	0	13
1	Enna Pehadzic	25:10	14:50	53 - 60	37 - 21	-7	16	2.11	2.49	11	6	19	16	2	2	8	5
2	Chelsie Hall	37:45	02:15	83 - 76	7 - 5	7	2	2.20	3.11	15	2	34	1	4	0	13	0
5	Yaubryon Chambers	24:54	15:06	57 - 49	33 - 32	8	1	2.29	2.19	11	6	20	15	4	0	11	2
15	Brinae Alexander	30:21	09:39	75 - 57	15 - 24	18	-9	2.47	1.55	13	4	29	6	3	1	9	4
22	Brylee Bartram	32:09	07:51	74 - 64	16 - 17	10	-1	2.30	2.04	15	2	28	7	4	0	10	3
23	Koi Love	33:42	06:18	69 - 70	21 - 11	-1	10	2.05	3.33	13	4	30	5	3	1	13	0
44	Emily Bowman	13:44	26:16	32 - 24	58 - 57	8	1	2.33	2.21	5	12	14	21	0	4	1	12

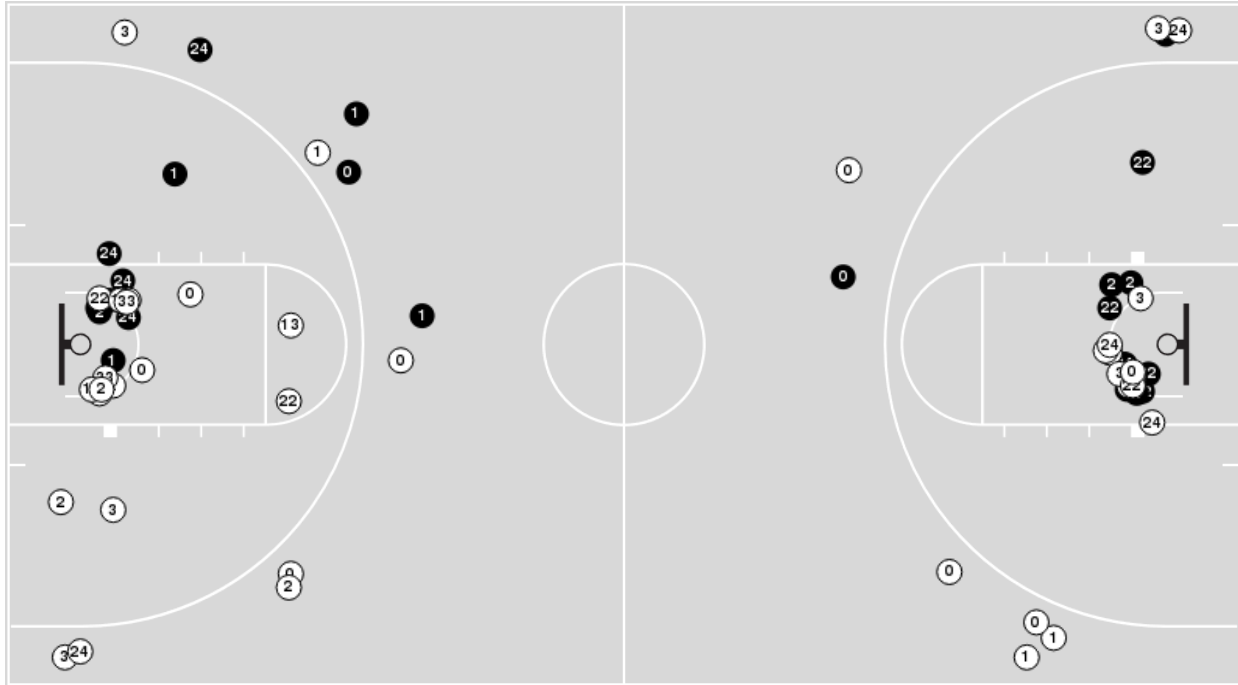


Officials: Beverly Roberts, Tina Napier, Dawn Marsh

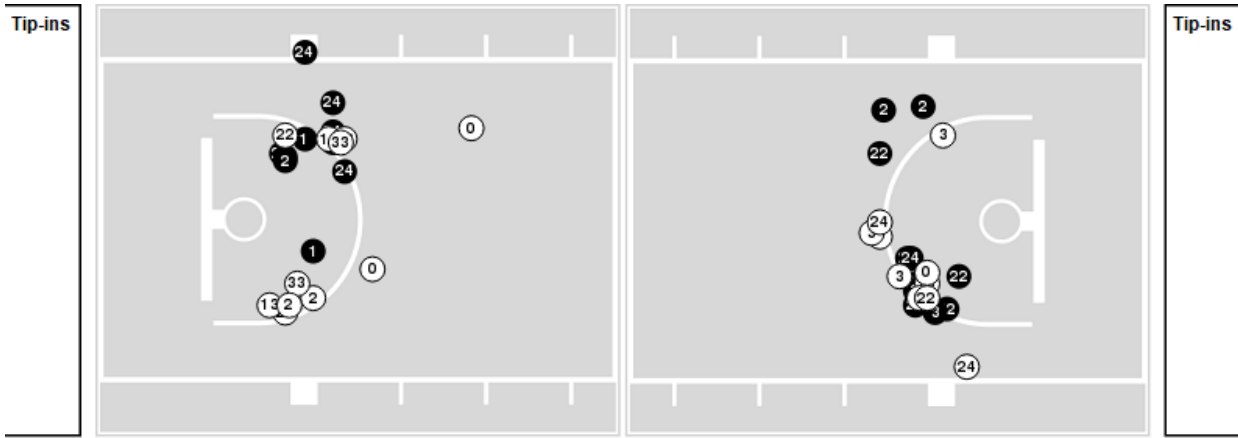
Players => 0, 1, 2, 3, 5, 11, 12, 13, 15, 20, 22, 23, 24, 25, 33, 35, 54FG Types=>AllResults=>All

VCU

All Field Goals



Blow Up Chart



● Made ○ Missed N - Player Number

VCU	M/A	%
Field Goals	30/69	43
2 Points	24/49	49
3 Points	6/20	30
Free Throws	15/21	71

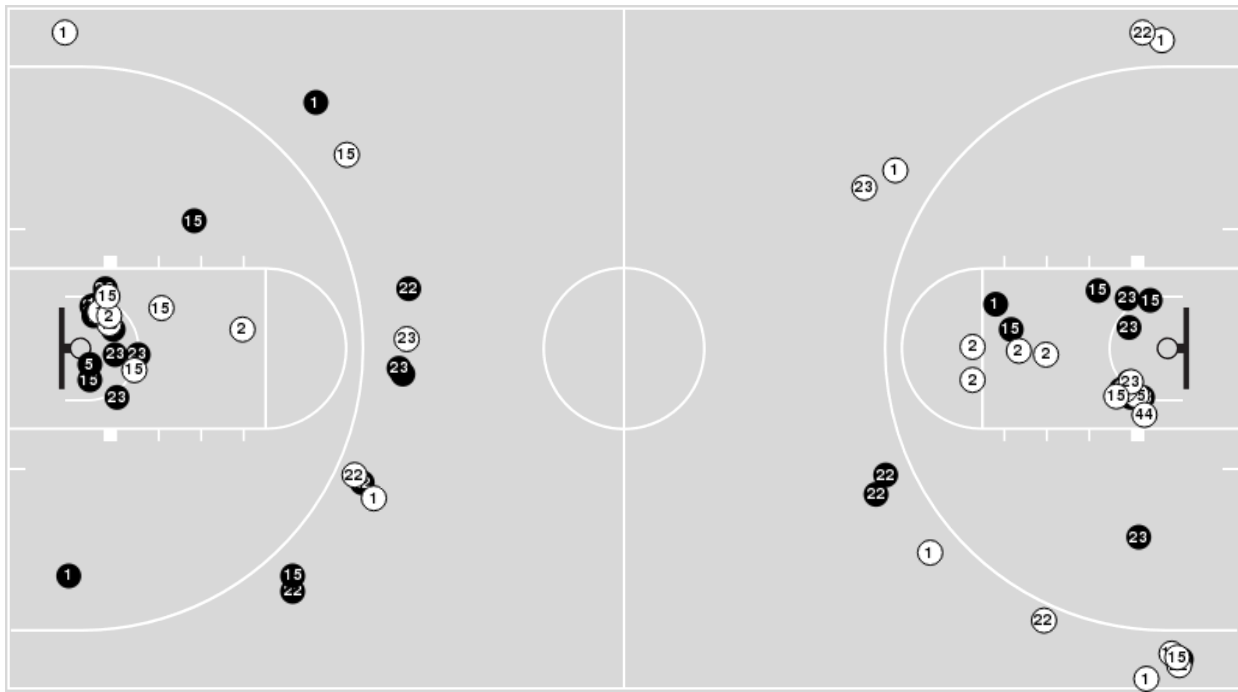
VCU	M/A	%
Points in the Paint	42 (21 / 42)	50
Fast Break Points	11 (7/8)	88
Second Chance Points	13 (6/13)	46
Effective FG%	48	



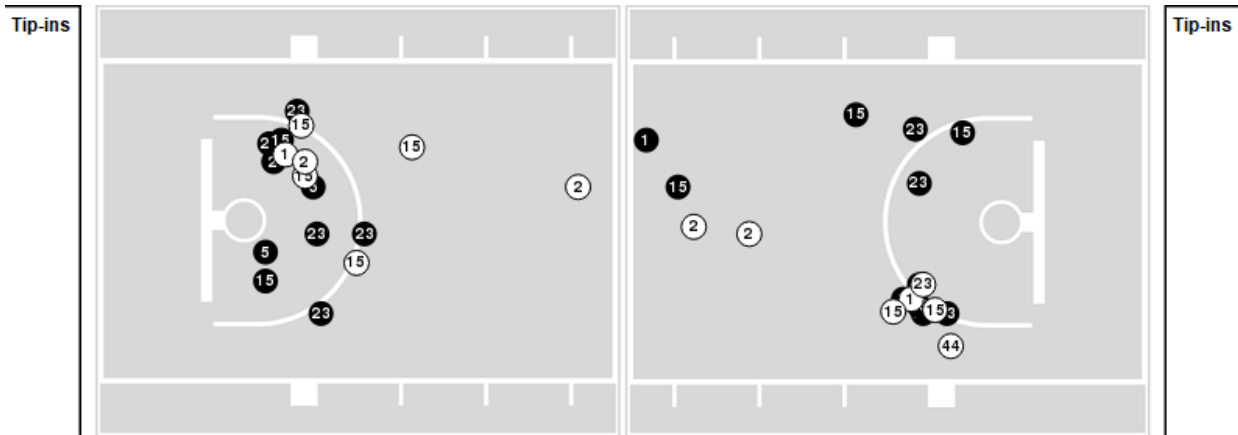
Players => 0, 1, 2, 3, 5, 12, 15, 22, 23, 24, 25, 33, 44, 50FG Types=>AllResults=>All

Vanderbilt

All Field Goals



Blow Up Chart



● Made ○ Missed N - Player Number

Vanderbilt	M/A	%
Field Goals	34/65	52
2 Points	24/40	60
3 Points	10/25	40
Free Throws	12/17	71

Vanderbilt	M/A	%
Points in the Paint	42 (21 / 35)	60
Fast Break Points	9 (6/7)	86
Second Chance Points	17 (8/11)	73
Effective FG%	60	



VCU at Vanderbilt

12/17/20 Memorial Gymnasium, Nashville
2020-21 Women's Basketball

Game Time: 2:00 PM
Game Duration: 2:01
Attendance: 46

Officials: Beverly Roberts, Tina Napier, Dawn Marsh

VCU

Lineup	Quarter On	Time On	Quarter Off	Time Off	Time on Court	Score	Score Diff	Reb	Stl	Tov	Ass	PPP
0- Te-Biasu S/ 1- Robinson T/ 3- Hattix-Covington M/ 22- Archie S/ 24- Reed T/	1	10:00	1	07:11	02:49	6-5	1	5	0	1	1	0.9317
0- Te-Biasu S/ 1- Robinson T/ 2- Griffith-Wallace J/ 24- Reed T/ 33- Motekaityte E/	1	07:11	1	05:20	01:51	4-2	2	1	0	1	0	1.3333
0- Te-Biasu S/ 2- Griffith-Wallace J/ 13- Bloom C/ 24- Reed T/ 33- Motekaityte E/	1	05:20	1	04:44	00:36	0-2	-2	2	0	0	0	0.0000
0- Te-Biasu S/ 2- Griffith-Wallace J/ 3- Hattix-Covington M/ 13- Bloom C/ 33- Motekaityte E/	1	04:44	1	03:21	01:23	2-0	2	2	0	0	0	0.6667
1- Robinson T/ 2- Griffith-Wallace J/ 3- Hattix-Covington M/ 13- Bloom C/ 22- Archie S/	1	03:21	1	02:53	00:28	0-0	0	0	0	0	0	0.0000
1- Robinson T/ 3- Hattix-Covington M/ 13- Bloom C/ 22- Archie S/ 24- Reed T/	1	02:53	1	01:16	01:37	2-6	-4	1	0	1	1	0.6667
0- Te-Biasu S/ 1- Robinson T/ 3- Hattix-Covington M/ 24- Reed T/ 35- Robinson S/	1	01:16	2	09:01	02:15	2-10	-8	0	0	1	0	0.5000
0- Te-Biasu S/ 1- Robinson T/ 2- Griffith-Wallace J/ 13- Bloom C/ 24- Reed T/	2	09:01	2	06:25	02:36	8-2	6	4	0	0	2	1.8018
0- Te-Biasu S/ 1- Robinson T/ 2- Griffith-Wallace J/ 24- Reed T/ 33- Motekaityte E/	2	06:25	2	04:26	01:59	7-2	5	2	1	0	0	1.8041
1- Robinson T/ 2- Griffith-Wallace J/ 3- Hattix-Covington M/ 24- Reed T/ 33- Motekaityte E/	2	04:26	2	01:55	02:31	4-4	0	1	1	0	1	0.8000
0- Te-Biasu S/ 1- Robinson T/ 2- Griffith-Wallace J/ 3- Hattix-Covington M/ 13- Bloom C/	2	01:55	2	00:33	01:21	3-5	-2	1	0	0	1	3.0000
0- Te-Biasu S/ 1- Robinson T/ 3- Hattix-Covington M/ 13- Bloom C/ 24- Reed T/	2	00:33	3	10:00	00:34	2-0	2	0	0	0	0	2.0000
0- Te-Biasu S/ 1- Robinson T/ 3- Hattix-Covington M/ 22- Archie S/ 24- Reed T/	3	10:00	3	07:12	02:48	7-7	0	3	0	0	1	1.3462
0- Te-Biasu S/ 1- Robinson T/ 3- Hattix-Covington M/ 13- Bloom C/ 24- Reed T/	3	07:12	3	05:15	01:57	3-4	-1	1	0	1	1	0.7500
0- Te-Biasu S/ 2- Griffith-Wallace J/ 3- Hattix-Covington M/ 13- Bloom C/ 24- Reed T/	3	05:15	3	03:49	01:26	1-4	-3	1	0	1	0	0.5319
0- Te-Biasu S/ 1- Robinson T/ 2- Griffith-Wallace J/ 3- Hattix-Covington M/ 24- Reed T/	3	03:49	3	03:38	00:11	0-0	0	0	0	0	0	0.0000
1- Robinson T/ 2- Griffith-Wallace J/ 3- Hattix-Covington M/ 22- Archie S/ 24- Reed T/	3	03:38	4	10:00	03:38	9-13	-4	2	0	1	1	1.5625
0- Te-Biasu S/ 1- Robinson T/ 2- Griffith-Wallace J/ 24- Reed T/ 33- Motekaityte E/	4	10:00	4	09:43	00:17	0-0	0	0	0	0	0	0.0000
0- Te-Biasu S/ 2- Griffith-Wallace J/ 22- Archie S/ 24- Reed T/ 33- Motekaityte E/	4	09:43	4	09:08	00:35	0-2	-2	1	0	1	0	0.0000
0- Te-Biasu S/ 2- Griffith-Wallace J/ 3- Hattix-Covington M/ 22- Archie S/ 24- Reed T/	4	09:08	4	05:30	03:38	11-8	3	3	2	1	4	1.5714
0- Te-Biasu S/ 1- Robinson T/ 2- Griffith-Wallace J/ 22- Archie S/ 24- Reed T/	4	05:30	4	04:11	01:19	2-3	-1	2	0	0	0	1.0000
0- Te-Biasu S/ 2- Griffith-Wallace J/ 3- Hattix-Covington M/ 22- Archie S/ 24- Reed T/	4	04:11	4	03:16	00:55	1-2	-1	1	0	0	0	0.5319
0- Te-Biasu S/ 1- Robinson T/ 3- Hattix-Covington M/ 22- Archie S/ 24- Reed T/	4	03:16	4	01:04	02:12	5-6	-1	0	1	0	1	1.3298
0- Te-Biasu S/ 2- Griffith-Wallace J/ 3- Hattix-Covington M/ 22- Archie S/ 24- Reed T/	4	01:04	4	00:24	00:39	0-0	0	2	2	2	0	0.0000
0- Te-Biasu S/ 1- Robinson T/ 3- Hattix-Covington M/ 22- Archie S/ 24- Reed T/	4	00:24	4	00:23	00:01	0-0	0	0	0	0	0	0.0000
0- Te-Biasu S/ 1- Robinson T/ 2- Griffith-Wallace J/ 22- Archie S/ 24- Reed T/	4	00:23	4	00:00	00:24	2-3	-1	1	0	0	0	1.0000



VCU at Vanderbilt

12/17/20 Memorial Gymnasium, Nashville
2020-21 Women's Basketball

Game Time: 2:00 PM
Game Duration: 2:01
Attendance: 46

Officials: Beverly Roberts, Tina Napier, Dawn Marsh

Vanderbilt

Lineup	Quarter On	Time On	Quarter Off	Time Off	Time on Court	Score	Score Diff	Reb	Stl	Tov	Ass	PPP
1- Pehadzic E/ 2- Hall C/ 5- Chambers Y/ 15- Alexander B/ 23- Love K/	1	10:00	1	07:11	02:49	5-6	-1	3	0	2	1	0.7396
1- Pehadzic E/ 2- Hall C/ 5- Chambers Y/ 22- Bartram B/ 23- Love K/	1	07:11	1	05:36	01:35	2-4	-2	0	1	0	1	1.0000
1- Pehadzic E/ 2- Hall C/ 22- Bartram B/ 23- Love K/ 44- Bowman E/	1	05:36	1	04:44	00:52	2-0	2	2	0	0	0	1.0000
2- Hall C/ 15- Alexander B/ 22- Bartram B/ 23- Love K/ 44- Bowman E/	1	04:44	1	01:11	03:33	6-4	2	5	0	1	0	1.0000
1- Pehadzic E/ 2- Hall C/ 15- Alexander B/ 22- Bartram B/ 44- Bowman E/	1	01:11	2	10:00	01:11	5-2	3	3	0	0	1	2.5000
0- LaChance B/ 1- Pehadzic E/ 22- Bartram B/ 23- Love K/ 44- Bowman E/	2	10:00	2	07:45	02:15	7-5	2	1	0	0	2	1.7500
1- Pehadzic E/ 2- Hall C/ 15- Alexander B/ 23- Love K/ 44- Bowman E/	2	07:45	2	07:28	00:17	0-1	-1	0	0	0	0	0.0000
2- Hall C/ 15- Alexander B/ 22- Bartram B/ 23- Love K/ 44- Bowman E/	2	07:28	2	06:25	01:03	0-2	-2	1	0	0	0	0.0000
1- Pehadzic E/ 2- Hall C/ 22- Bartram B/ 23- Love K/ 44- Bowman E/	2	06:25	2	05:48	00:37	2-2	0	1	0	0	0	2.0000
1- Pehadzic E/ 2- Hall C/ 5- Chambers Y/ 22- Bartram B/ 23- Love K/	2	05:48	2	03:27	02:21	0-7	-7	2	0	3	1	0.0000
2- Hall C/ 5- Chambers Y/ 15- Alexander B/ 22- Bartram B/ 23- Love K/	2	03:27	2	01:55	01:32	4-2	2	3	0	0	1	2.0000
2- Hall C/ 5- Chambers Y/ 15- Alexander B/ 22- Bartram B/ 44- Bowman E/	2	01:55	2	00:44	01:11	5-3	2	0	0	0	1	2.6596
1- Pehadzic E/ 2- Hall C/ 5- Chambers Y/ 22- Bartram B/ 44- Bowman E/	2	00:44	3	10:00	00:44	0-2	-2	0	0	0	0	0.0000
1- Pehadzic E/ 2- Hall C/ 15- Alexander B/ 23- Love K/ 44- Bowman E/	3	10:00	3	07:59	02:01	5-3	2	1	0	0	1	1.4535
1- Pehadzic E/ 2- Hall C/ 5- Chambers Y/ 15- Alexander B/ 23- Love K/	3	07:59	3	05:15	02:44	6-7	-1	3	0	1	0	1.1278
2- Hall C/ 5- Chambers Y/ 15- Alexander B/ 22- Bartram B/ 23- Love K/	3	05:15	3	03:49	01:26	4-1	3	0	0	1	0	1.3333
1- Pehadzic E/ 2- Hall C/ 15- Alexander B/ 22- Bartram B/ 23- Love K/	3	03:49	3	01:53	01:56	5-7	-2	1	0	0	2	1.6667
1- Pehadzic E/ 2- Hall C/ 5- Chambers Y/ 15- Alexander B/ 22- Bartram B/	3	01:53	4	10:00	01:53	8-2	6	1	1	0	1	2.6667
1- Pehadzic E/ 2- Hall C/ 5- Chambers Y/ 22- Bartram B/ 23- Love K/	4	10:00	4	09:21	00:39	2-0	2	0	0	0	0	1.3889
1- Pehadzic E/ 2- Hall C/ 15- Alexander B/ 22- Bartram B/ 23- Love K/	4	09:21	4	08:00	01:21	1-6	-5	0	0	1	0	0.3472
2- Hall C/ 5- Chambers Y/ 15- Alexander B/ 22- Bartram B/ 23- Love K/	4	08:00	4	05:30	02:30	7-5	2	3	1	1	1	1.4000
1- Pehadzic E/ 2- Hall C/ 5- Chambers Y/ 15- Alexander B/ 22- Bartram B/	4	05:30	4	04:11	01:19	3-2	1	1	0	0	1	1.5000
2- Hall C/ 5- Chambers Y/ 15- Alexander B/ 22- Bartram B/ 23- Love K/	4	04:11	4	03:16	00:55	2-1	1	2	0	0	1	1.0000
1- Pehadzic E/ 2- Hall C/ 5- Chambers Y/ 22- Bartram B/ 23- Love K/	4	03:16	4	02:40	00:36	0-4	-4	0	0	1	0	0.0000
2- Hall C/ 5- Chambers Y/ 15- Alexander B/ 22- Bartram B/ 23- Love K/	4	02:40	4	00:00	02:40	9-3	6	2	1	2	2	1.5625



VCU at Vanderbilt

12/17/20 Memorial Gymnasium, Nashville
2020-21 Women's Basketball

Game Time: 2:00 PM
Game Duration: 2:01
Attendance: 46

Officials: Beverly Roberts, Tina Napier, Dawn Marsh

VCU

Lineup	Time	Score	Score Diff	Pts/Min	Reb	Stl	Tov	Ast	PPP
0- Te-Biasu S/ 1- Robinson T/ 3- Hattix-Covington M/ 22- Archie S/ 24- Reed T/	07:50	18-18	0	2.2979	8	1	1	3	1.1688
0- Te-Biasu S/ 2- Griffith-Wallace J/ 3- Hattix-Covington M/ 22- Archie S/ 24- Reed T/	05:12	12-10	2	2.3077	6	4	3	4	1.0101
0- Te-Biasu S/ 1- Robinson T/ 2- Griffith-Wallace J/ 24- Reed T/ 33- Motekaityte E/	04:07	11-4	7	2.6721	3	1	1	0	1.5988
1- Robinson T/ 2- Griffith-Wallace J/ 3- Hattix-Covington M/ 22- Archie S/ 24- Reed T/	03:38	9-13	-4	2.4771	2	0	1	1	1.5625
0- Te-Biasu S/ 1- Robinson T/ 2- Griffith-Wallace J/ 13- Bloom C/ 24- Reed T/	02:36	8-2	6	3.0769	4	0	0	2	1.8018
1- Robinson T/ 2- Griffith-Wallace J/ 3- Hattix-Covington M/ 24- Reed T/ 33- Motekaityte E/	02:31	4-4	0	1.5894	1	1	0	1	0.8000
0- Te-Biasu S/ 1- Robinson T/ 3- Hattix-Covington M/ 13- Bloom C/ 24- Reed T/	02:31	5-4	1	1.9868	1	0	1	1	1.0000
0- Te-Biasu S/ 1- Robinson T/ 3- Hattix-Covington M/ 24- Reed T/ 35- Robinson S/	02:15	2-10	-8	0.8889	0	0	1	0	0.5000
0- Te-Biasu S/ 1- Robinson T/ 2- Griffith-Wallace J/ 22- Archie S/ 24- Reed T/	01:43	4-6	-2	2.3301	3	0	0	0	1.0000
1- Robinson T/ 3- Hattix-Covington M/ 13- Bloom C/ 22- Archie S/ 24- Reed T/	01:37	2-6	-4	1.2371	1	0	1	1	0.6667
0- Te-Biasu S/ 2- Griffith-Wallace J/ 3- Hattix-Covington M/ 13- Bloom C/ 24- Reed T/	01:26	1-4	-3	0.6977	1	0	1	0	0.5319
0- Te-Biasu S/ 2- Griffith-Wallace J/ 3- Hattix-Covington M/ 13- Bloom C/ 33- Motekaityte E/	01:23	2-0	2	1.4458	2	0	0	0	0.6667
0- Te-Biasu S/ 1- Robinson T/ 2- Griffith-Wallace J/ 3- Hattix-Covington M/ 13- Bloom C/	01:21	3-5	-2	2.2222	1	0	0	1	3.0000
0- Te-Biasu S/ 2- Griffith-Wallace J/ 13- Bloom C/ 24- Reed T/ 33- Motekaityte E/	00:36	0-2	-2	0.0000	2	0	0	0	0.0000
0- Te-Biasu S/ 2- Griffith-Wallace J/ 22- Archie S/ 24- Reed T/ 33- Motekaityte E/	00:35	0-2	-2	0.0000	1	0	1	0	0.0000
1- Robinson T/ 2- Griffith-Wallace J/ 3- Hattix-Covington M/ 13- Bloom C/ 22- Archie S/	00:28	0-0	0	0.0000	0	0	0	0	0.0000
0- Te-Biasu S/ 1- Robinson T/ 2- Griffith-Wallace J/ 3- Hattix-Covington M/ 24- Reed T/	00:11	0-0	0	0.0000	0	0	0	0	0.0000



VCU at Vanderbilt

12/17/20 Memorial Gymnasium, Nashville
2020-21 Women's Basketball

Game Time: 2:00 PM
Game Duration: 2:01
Attendance: 46

Officials: Beverly Roberts, Tina Napier, Dawn Marsh

Vanderbilt

Lineup	Time	Score	Score Diff	Pts/Min	Reb	Stl	Tov	Ast	PPP
2- Hall C/ 5- Chambers Y/ 15- Alexander B/ 22- Bartram B/ 23- Love K/	09:03	26-12	14	2.8729	10	2	4	5	1.4640
1- Pehadzic E/ 2- Hall C/ 5- Chambers Y/ 15- Alexander B/ 23- Love K/	05:33	11-13	-2	1.9820	6	0	3	1	0.9106
1- Pehadzic E/ 2- Hall C/ 5- Chambers Y/ 22- Bartram B/ 23- Love K/	05:11	4-15	-11	0.7717	2	1	4	2	0.4237
2- Hall C/ 15- Alexander B/ 22- Bartram B/ 23- Love K/ 44- Bowman E/	04:36	6-6	0	1.3043	6	0	1	0	0.7500
1- Pehadzic E/ 2- Hall C/ 15- Alexander B/ 22- Bartram B/ 23- Love K/	03:17	6-13	-7	1.8274	1	0	1	2	1.0204
1- Pehadzic E/ 2- Hall C/ 5- Chambers Y/ 15- Alexander B/ 22- Bartram B/	03:12	11-4	7	3.4375	2	1	0	2	2.2000
1- Pehadzic E/ 2- Hall C/ 15- Alexander B/ 23- Love K/ 44- Bowman E/	02:18	5-4	1	2.1739	1	0	0	1	1.1261
0- LaChance B/ 1- Pehadzic E/ 22- Bartram B/ 23- Love K/ 44- Bowman E/	02:15	7-5	2	3.1111	1	0	0	2	1.7500
1- Pehadzic E/ 2- Hall C/ 22- Bartram B/ 23- Love K/ 44- Bowman E/	01:29	4-2	2	2.6966	3	0	0	0	1.3333
1- Pehadzic E/ 2- Hall C/ 15- Alexander B/ 22- Bartram B/ 44- Bowman E/	01:11	5-2	3	4.2254	3	0	0	1	2.5000
2- Hall C/ 5- Chambers Y/ 15- Alexander B/ 22- Bartram B/ 44- Bowman E/	01:11	5-3	2	4.2254	0	0	0	1	2.6596
1- Pehadzic E/ 2- Hall C/ 5- Chambers Y/ 22- Bartram B/ 44- Bowman E/	00:44	0-2	-2	0.0000	0	0	0	0	0.0000