



Officials: Terry Oglesby, Ted Valentine, Mike Nance

Missouri - 61

Record: 14-14 (6-9)

NO.	Name	F	Min	FG			Rebounds			Fouls		TP	AS	TO	ST	Blocks		+/-
				M-A	M-A	M-A	OR	DR	TOT	PF	FD					BS	BA	
14	Reed Nikko	F	18:02	5-5	0-0	4-4	1	4	5	3	3	14	0	1	0	1	0	10
24	Kobe Brown	F	19:02	1-4	0-1	2-2	1	3	4	2	4	4	0	2	0	0	0	7
1	Xavier Pinson	G	20:45	6-12	1-4	4-4	0	5	5	4	2	17	1	4	0	0	0	6
4	Javon Pickett	G	33:02	2-8	0-2	0-0	1	9	10	1	0	4	0	2	1	0	1	9
12	Dru Smith	G	38:12	4-14	1-4	0-0	1	1	2	3	2	9	3	4	2	1	1	7
13	Mark Smith		14:14	2-4	1-3	0-0	0	1	1	1	2	5	0	1	0	0	0	0
00	Torrence Watson		12:11	0-1	0-1	0-0	0	0	0	1	1	0	0	0	0	0	0	-4
5	Mitchell Smith		26:06	1-3	1-2	3-3	3	9	12	2	2	6	2	1	0	1	0	8
23	Jeremiah Tilmon		08:59	1-1	0-0	0-2	1	1	2	1	1	2	0	1	0	1	0	-3
42	Parker Braun		09:27	0-0	0-0	0-0	0	0	0	3	0	0	1	0	0	1	0	5
Team							0	1	1			0		0				
<b>Totals</b>				22-52	4-17	13-15	8	34	42	21	17	61	7	16	3	5	2	9

Shooting By Period		
1st FG%	10-27	37.0%
3PT%	1-8	12.5%
FT%	6-8	75%
2nd FG%	12-25	48.0%
3PT%	3-9	33.3%
FT%	7-7	100%
GM FG%	22-52	42.3%
3PT%	4-17	23.5%
FT%	13-15	86.7%

Dead Ball Rebounds: 1, 0

Technical Fouls::NONE

Vanderbilt - 52

Record: 9-19 (1-14)

NO.	Name	F	Min	FG			Rebounds			Fouls		TP	AS	TO	ST	Blocks		+/-
				M-A	M-A	M-A	OR	DR	TOT	PF	FD					BS	BA	
1	Dylan Disu	F	20:39	1-5	1-5	0-0	0	6	6	5	0	3	1	2	0	1	0	2
50	Ejike Obinna	C	35:35	3-3	0-0	3-6	2	2	4	2	5	9	0	0	0	1	0	-11
0	Saben Lee	G	37:52	5-14	1-5	3-6	0	4	4	1	5	14	1	5	0	0	3	-14
2	Scotty Pippen Jr.	G	31:59	6-11	2-4	5-11	1	1	2	2	7	19	0	2	2	0	1	-6
3	Maxwell Evans	G	38:45	0-5	0-3	3-4	0	7	7	1	3	3	3	0	2	0	0	-7
4	Jordan Wright		10:43	0-3	0-1	2-2	0	1	1	4	1	2	0	0	0	0	1	-10
11	Braelee Albert		19:07	0-3	0-3	0-0	0	1	1	1	0	0	1	1	0	0	0	-4
21	Jon Jossell		02:08	0-0	0-0	0-0	0	0	0	0	0	0	0	0	0	0	0	5
10	Drew Weikert		03:12	1-1	0-0	0-0	0	0	0	1	0	2	0	0	1	0	0	0
Team							1	1	2			0		1				
<b>Totals</b>				16-45	4-21	16-29	4	23	27	17	21	52	6	11	5	2	5	-9

Shooting By Period		
1st FG%	10-27	37.0%
3PT%	4-17	23.5%
FT%	4-8	50%
2nd FG%	6-18	33.3%
3PT%	0-4	0.0%
FT%	12-21	57.1%
GM FG%	16-45	35.6%
3PT%	4-21	19.0%
FT%	16-29	55.2%

Dead Ball Rebounds: 4, 0

Technical Fouls::NONE

	MIZ	VAN
Biggest lead	10 (2 <sup>nd</sup> 9:43)	9 (1 <sup>st</sup> 3:59)
Best Scoring Run	7 (1 <sup>st</sup> 1:44)	7 (1 <sup>st</sup> 3:59)
Lead Changes	8	
Times Tied	5	
Time with Lead	26:53	10:48

Points from	MIZ	VAN
Turnovers	14	12
Paint	28	24
Second Chance	13	9
Fast Breaks	2	5
Bench	13	4

	Period by Period Scoring		
	1st	2nd	TOT
MIZ	27	34	61
VAN	28	24	52



**Missouri at Vanderbilt**

02/26/20 Memorial Gymnasium, Nashville  
2019-20 Men's Basketball

**Game Time:** 8:00 PM  
**Game Duration:** 1:52  
**Attendance:** 8,497

**Officials:** Terry Oglesby, Ted Valentine, Mike Nance

**Period 1**

**Quarter Starters:**

<b>VAN</b>	0 Lee S	1 Disu D	2 Phippen Jr. S	3 Evans M	50 Obinna E
<b>MIZ</b>	1 Pinson X	4 Pickett J	12 Smith D	14 Nikko R	24 Brown K

Game Time	VAN	Score	Diff	MIZ
20:00	50 OBINNA E jumpball lost			14 NIKKO R jumpball won
19:49		<b>0-2</b>	<b>-2</b>	14 NIKKO R 2pt FG in the paint, layup made (2)
19:49				12 SMITH D assist (1)
19:23	0 LEE S 2pt FG in the paint, layup blocked			
19:23				14 NIKKO R block (1)
19:18				14 NIKKO R defensive rebound (1)
19:11				1 PINSON X 3pt FG , jump shot missed
19:08	1 DISU D defensive rebound (1)			
19:01	2 PIPPEN JR. S 3pt FG , jump shot missed			
18:58				14 NIKKO R defensive rebound (2)
18:45				1 PINSON X 2pt FG outside the paint, jump shot missed
18:43	0 LEE S defensive rebound (1)			
18:33	2 PIPPEN JR. S 2pt FG in the paint, turnaround jump shot made (2)	<b>2-2</b>	<b>0</b>	
18:07				24 BROWN K turnover bad pass (1)
17:44	50 OBINNA E 2pt FG in the paint, layup made (2)	<b>4-2</b>	<b>2</b>	
17:44	1 DISU D assist (1)			
17:15				4 PICKETT J 2pt FG in the paint, driving layup missed
17:09				4 PICKETT J offensive rebound (1)
17:08		<b>4-4</b>	<b>0</b>	4 PICKETT J 2pt FG in the paint, layup made (2)
17:00	0 LEE S 2pt FG in the paint, driving layup made (2)	<b>6-4</b>	<b>2</b>	
17:00				1 PINSON X substitution out
17:00				13 SMITH M substitution in
16:47				24 BROWN K turnover bad pass (2)
16:27	0 LEE S foul drawn (1)			4 PICKETT J foul personal (1 - 1)
16:21	1 DISU D 3pt FG , jump shot missed			
16:18				4 PICKETT J defensive rebound (2)
16:12				12 SMITH D 2pt FG in the paint, driving layup missed
16:09	1 DISU D defensive rebound (2)			
16:04	3 EVANS M 3pt FG , jump shot missed			
16:01				24 BROWN K defensive rebound (1)
15:49				24 BROWN K 3pt FG , jump shot missed
15:46	3 EVANS M defensive rebound (1)			
15:40	3 EVANS M 3pt FG , jump shot missed			
15:35				14 NIKKO R defensive rebound (3)
15:18		<b>6-7</b>	<b>-1</b>	13 SMITH M 3pt FG , jump shot made (3)
15:18				12 SMITH D assist (2)
15:00	0 LEE S turnover bad pass (1)			4 PICKETT J steal (1)
14:55				4 PICKETT J 2pt FG in the paint, driving layup blocked
14:55	1 DISU D block (1)			
14:52	50 OBINNA E defensive rebound (1)			
14:48	1 DISU D 3pt FG , jump shot missed			
14:44				24 BROWN K defensive rebound (2)



**Missouri at Vanderbilt**

02/26/20 Memorial Gymnasium, Nashville  
2019-20 Men's Basketball

**Game Time:** 8:00 PM  
**Game Duration:** 1:52  
**Attendance:** 8,497

**Officials:** Terry Oglesby, Ted Valentine, Mike Nance

Game Time	VAN	Score	Diff	MIZ
14:22	jump ball situation			
14:22	3 EVANS M steal (1)			4 PICKETT J turnover lost ball (1)
14:22	Timeout media			
14:22				4 PICKETT J substitution out
14:22				12 SMITH D substitution out
14:22				14 NIKKO R substitution out
14:22				24 BROWN K substitution out
14:22				00 WATSON T substitution in
14:22				1 PINSON X substitution in
14:22				5 SMITH M substitution in
14:22				23 TILMON J substitution in
14:09	1 DISU D turnover travel (1)			
14:09	3 EVANS M substitution out			
14:09	4 WRIGHT J substitution in			
13:57	4 WRIGHT J foul shooting (1 - 1)			1 PINSON X foul drawn (1)
13:57		<b>6-8</b>	<b>-2</b>	1 PINSON X free throw 1 - 2 made (1)
13:57		<b>6-9</b>	<b>-3</b>	1 PINSON X free throw 2 - 2 made (2)
13:42	0 LEE S 3pt FG , jump shot missed			
13:40				1 PINSON X defensive rebound (1)
13:23	4 WRIGHT J foul shooting (2 - 2)			23 TILMON J foul drawn (1)
13:23				23 TILMON J free throw 1 - 2 missed
13:23				offensive dead ball rebound (1)
13:23	50 OBINNA E substitution out			
13:23	11 ALBERT B substitution in			
13:23				13 SMITH M substitution out
13:23				4 PICKETT J substitution in
13:23				23 TILMON J free throw 2 - 2 missed
13:22	1 DISU D defensive rebound (3)			
13:02	1 DISU D 3pt FG , jump shot missed			
12:59				4 PICKETT J defensive rebound (3)
12:54	0 LEE S foul drawn (2)			1 PINSON X foul offensive (1 - 2)
12:54				1 PINSON X turnover offensive (1)
12:54	2 PIPPEN JR. S substitution out			
12:54	3 EVANS M substitution in			
12:54				00 WATSON T substitution out
12:54				12 SMITH D substitution in
12:30	11 ALBERT B 3pt FG , jump shot missed			
12:27				1 PINSON X defensive rebound (2)
12:15				4 PICKETT J 2pt FG in the paint, driving layup missed
12:12	4 WRIGHT J defensive rebound (1)			
12:06	4 WRIGHT J 2pt FG in the paint, driving layup blocked			
12:06				23 TILMON J block (1)
12:02				4 PICKETT J defensive rebound (4)
11:42	Timeout media			
11:42				23 TILMON J substitution out
11:42				14 NIKKO R substitution in
11:35				12 SMITH D 2pt FG outside the paint, turnaround jump shot missed
11:33	1 DISU D defensive rebound (4)			



**Missouri at Vanderbilt**

02/26/20 Memorial Gymnasium, Nashville  
2019-20 Men's Basketball

**Game Time:** 8:00 PM  
**Game Duration:** 1:52  
**Attendance:** 8,497

**Officials:** Terry Oglesby, Ted Valentine, Mike Nance

Game Time	VAN	Score	Diff	MIZ
11:05	0 LEE S 3pt FG , jump shot made (5)	<b>9-9</b>	<b>0</b>	
10:49				4 PICKETT J 3pt FG , jump shot missed
10:47	1 DISU D defensive rebound (5)			
10:31	11 ALBERT B 3pt FG , jump shot missed			
10:28				4 PICKETT J defensive rebound (5)
10:17		<b>9-11</b>	<b>-2</b>	14 NIKKO R 2pt FG in the paint, dunk, made (4)
10:17				5 SMITH M assist (1)
10:17	4 WRIGHT J foul shooting (3 - 3)			14 NIKKO R foul drawn (1)
10:17				1 PINSON X substitution out
10:17				5 SMITH M substitution out
10:17				13 SMITH M substitution in
10:17				24 BROWN K substitution in
10:17		<b>9-12</b>	<b>-3</b>	14 NIKKO R free throw 1 - 1 made (5)
10:12	1 DISU D substitution out			
10:12	4 WRIGHT J substitution out			
10:12	2 PIPPEN JR. S substitution in			
10:12	50 OBINNA E substitution in			
10:12				14 NIKKO R substitution out
10:12				42 BRAUN P substitution in
10:06	2 PIPPEN JR. S foul drawn (1)			42 BRAUN P foul personal (1 - 3)
09:49	0 LEE S 2pt FG in the paint, dunk, missed			
09:45				13 SMITH M defensive rebound (1)
09:28	2 PIPPEN JR. S steal (1)			13 SMITH M turnover bad pass (1)
09:24	2 PIPPEN JR. S 2pt FG fast break in the paint, dunk, made (4)	<b>11-12</b>	<b>-1</b>	
09:03		<b>11-14</b>	<b>-3</b>	12 SMITH D 2pt FG in the paint, jump shot made (2)
08:33	2 PIPPEN JR. S 3pt FG , jump shot made (7)	<b>14-14</b>	<b>0</b>	
08:33	11 ALBERT B assist (1)			
08:10		<b>14-16</b>	<b>-2</b>	4 PICKETT J 2pt FG in the paint, hook shot made (4)
07:36	11 ALBERT B 3pt FG , jump shot missed			
07:35	offensive dead ball rebound (1)			
07:35	turnover shot clock (3)			
07:35	Timeout media			
07:35	11 ALBERT B substitution out			
07:35	1 DISU D substitution in			
07:35				13 SMITH M substitution out
07:35				00 WATSON T substitution in
07:20				12 SMITH D turnover bad pass (1)
06:54	2 PIPPEN JR. S 2pt FG in the paint, jump shot missed			
06:54	50 OBINNA E offensive rebound (2)			
06:54	50 OBINNA E foul drawn (1)			42 BRAUN P foul personal (2 - 4)
06:54				4 PICKETT J substitution out
06:54				42 BRAUN P substitution out
06:54				13 SMITH M substitution in
06:54				23 TILMON J substitution in
06:34	2 PIPPEN JR. S 3pt FG , jump shot made (10)	<b>17-16</b>	<b>1</b>	
06:34	3 EVANS M assist (1)			
06:18				13 SMITH M 3pt FG , jump shot missed
06:15	3 EVANS M defensive rebound (2)			
06:05	2 PIPPEN JR. S 2pt FG in the paint, layup made (12)	<b>19-16</b>	<b>3</b>	



**Missouri at Vanderbilt**

02/26/20 Memorial Gymnasium, Nashville  
2019-20 Men's Basketball

**Game Time:** 8:00 PM  
**Game Duration:** 1:52  
**Attendance:** 8,497

**Officials:** Terry Oglesby, Ted Valentine, Mike Nance

Game Time	VAN	Score	Diff	MIZ
06:05	2 PIPPEN JR. S foul drawn (2)			24 BROWN K foul shooting (1 - 5)
06:05				00 WATSON T substitution out
06:05				24 BROWN K substitution out
06:05				1 PINSON X substitution in
06:05				5 SMITH M substitution in
06:05	2 PIPPEN JR. S free throw 1 - 1 missed			
06:04				5 SMITH M defensive rebound (1)
05:51				12 SMITH D 3pt FG , jump shot missed
05:48				5 SMITH M offensive rebound (2)
05:47	2 PIPPEN JR. S steal (2)			5 SMITH M turnover bad pass (1)
05:44	2 PIPPEN JR. S foul drawn (3)			1 PINSON X foul shooting (2 - 6)
05:44	2 PIPPEN JR. S free throw fast break 1 - 2 made (13)	<b>20-16</b>	<b>4</b>	
05:44	2 PIPPEN JR. S free throw fast break 2 - 2 missed			
05:43				23 TILMON J defensive rebound (1)
05:31				12 SMITH D 2pt FG in the paint, layup missed
05:29				23 TILMON J offensive rebound (2)
05:27		<b>20-18</b>	<b>2</b>	23 TILMON J 2pt FG in the paint, layup made (2)
05:16	3 EVANS M foul drawn (1)			13 SMITH M foul personal (1 - 7)
05:16	0 LEE S substitution out			
05:16	21 JOSSELL J substitution in			
05:16				1 PINSON X substitution out
05:16				4 PICKETT J substitution in
05:16	3 EVANS M 1&1 free throw 1 made (1)	<b>21-18</b>	<b>3</b>	
05:16	3 EVANS M 1&1 free throw 2 made (2)	<b>22-18</b>	<b>4</b>	
05:08				13 SMITH M 3pt FG , jump shot missed
05:05	3 EVANS M defensive rebound (3)			
04:48	1 DISU D 3pt FG , jump shot made (3)	<b>25-18</b>	<b>7</b>	
04:48	3 EVANS M assist (2)			
04:22				4 PICKETT J 3pt FG , jump shot missed
04:19	1 DISU D defensive rebound (6)			
03:59	2 PIPPEN JR. S 2pt FG in the paint, jump shot made (15)	<b>27-18</b>	<b>9</b>	
03:41		<b>27-20</b>	<b>7</b>	13 SMITH M 2pt FG in the paint, layup made (5)
03:13	Timeout media			
03:13				4 PICKETT J substitution out
03:13				13 SMITH M substitution out
03:13				23 TILMON J substitution out
03:13				00 WATSON T substitution in
03:13				14 NIKKO R substitution in
03:13				24 BROWN K substitution in
03:10	1 DISU D 3pt FG , jump shot missed			
03:08				defensive rebound (18)
03:08	21 JOSSELL J substitution out			
03:08	0 LEE S substitution in			
02:49	1 DISU D foul shooting (1 - 4)			5 SMITH M foul drawn (1)
02:49		<b>27-21</b>	<b>6</b>	5 SMITH M free throw 1 - 3 made (1)
02:49		<b>27-22</b>	<b>5</b>	5 SMITH M free throw 2 - 3 made (2)
02:49		<b>27-23</b>	<b>4</b>	5 SMITH M free throw 3 - 3 made (3)
02:28	3 EVANS M 3pt FG , jump shot missed			
02:25				12 SMITH D defensive rebound (1)



**Missouri at Vanderbilt**

02/26/20 Memorial Gymnasium, Nashville  
2019-20 Men's Basketball

**Game Time:** 8:00 PM  
**Game Duration:** 1:52  
**Attendance:** 8,497

**Officials:** Terry Oglesby, Ted Valentine, Mike Nance

Game Time	VAN	Score	Diff	MIZ
02:13				12 SMITH D 2pt FG outside the paint, jump shot blocked
02:13	50 OBINNA E block (1)			
02:13	0 LEE S defensive rebound (2)			
02:01	1 DISU D foul offensive (2 - 5)			24 BROWN K foul drawn (1)
02:01	1 DISU D turnover offensive (2)			
02:01	1 DISU D substitution out			
02:01	11 ALBERT B substitution in			
01:44		<b>27-25</b>	<b>2</b>	12 SMITH D 2pt FG outside the paint, jump shot made (4)
01:14	3 EVANS M foul drawn (2)			24 BROWN K foul shooting (2 - 8)
01:14	3 EVANS M free throw 1 - 2 made (3)	<b>28-25</b>	<b>3</b>	
01:14				24 BROWN K substitution out
01:14				4 PICKETT J substitution in
01:14	3 EVANS M free throw 2 - 2 missed			
01:13				14 NIKKO R defensive rebound (4)
00:59		<b>28-27</b>	<b>1</b>	12 SMITH D 2pt FG outside the paint, jump shot made (6)
00:40	0 LEE S 3pt FG , jump shot missed			
00:37				4 PICKETT J defensive rebound (6)
00:31				Timeout 30 Sec
00:20				12 SMITH D 2pt FG in the paint, driving layup missed
00:17	50 OBINNA E defensive rebound (3)			
00:17	50 OBINNA E foul drawn (2)			14 NIKKO R foul personal (1 - 9)
00:17	50 OBINNA E 1&1 free throw 1 missed			
00:17				5 SMITH M defensive rebound (3)
00:05				12 SMITH D 2pt FG outside the paint, jump shot missed
00:03	11 ALBERT B defensive rebound (1)			
<b>END OF PERIOD</b>				
<b>VAN 28-27 MIZ</b>				



Missouri at Vanderbilt

02/26/20 Memorial Gymnasium, Nashville  
2019-20 Men's Basketball

Game Time: 8:00 PM  
Game Duration: 1:52  
Attendance: 8,497

Officials: Terry Oglesby, Ted Valentine, Mike Nance

Missouri - 27

NO.	Name	F	Min	FG			Rebounds			Fouls		TP	AS	TO	ST	Blocks		+/-
				M-A	M-A	M-A	OR	DR	TOT	PF	FD					BS	BA	
14	Reed Nikko	F	10:21	2-2	0-0	1-1	0	4	4	1	1	5	0	0	0	1	0	7
24	Kobe Brown	F	11:49	0-1	0-1	0-0	0	2	2	2	1	0	0	2	0	0	0	0
1	Xavier Pinson	G	07:54	0-2	0-1	2-2	0	2	2	2	1	2	0	1	0	0	0	0
4	Javon Pickett	G	15:24	2-7	0-2	0-0	1	5	6	1	0	4	0	1	1	0	1	-3
12	Dru Smith	G	18:32	3-10	0-1	0-0	0	1	1	0	0	6	2	1	0	0	1	-3
13	Mark Smith		10:00	2-4	1-3	0-0	0	1	1	1	0	5	0	1	0	0	0	-4
00	Torrence Watson		06:11	0-0	0-0	0-0	0	0	0	0	0	0	0	0	0	0	0	3
5	Mitchell Smith		10:10	0-0	0-0	3-3	1	2	3	0	1	3	1	1	0	0	0	3
23	Jeremiah Tilmon		06:21	1-1	0-0	0-2	1	1	2	0	1	2	0	0	0	1	0	-7
42	Parker Braun		03:18	0-0	0-0	0-0	0	0	0	2	0	0	0	0	0	0	0	-1
Team							0	1	1			0			0			
<b>Totals</b>				10-27	1-8	6-8	3	19	22	9	5	27	3	7	1	2	2	-1

Shooting By Period		
1st FG%	10-27	37.0%
3PT%	1-8	12.5%
FT%	6-8	75%
GM FG%	10-27	37.0%
3PT%	1-8	12.5%
FT%	6-8	75.0%

Dead Ball Rebounds: 1, 0

Technical Fouls::NONE

Vanderbilt - 28

NO.	Name	F	Min	FG			Rebounds			Fouls		TP	AS	TO	ST	Blocks		+/-
				M-A	M-A	M-A	OR	DR	TOT	PF	FD					BS	BA	
1	Dylan Disu	F	15:22	1-5	1-5	0-0	0	6	6	2	0	3	1	2	0	1	0	3
50	Ejike Obinna	C	16:49	1-1	0-0	0-1	1	2	3	0	2	2	0	0	0	1	0	1
0	Saben Lee	G	17:52	2-6	1-3	0-0	0	2	2	0	2	5	0	1	0	0	1	-4
2	Scotty Pippen Jr.	G	17:18	6-8	2-3	1-3	0	0	0	0	3	15	0	0	2	0	0	1
3	Maxwell Evans	G	18:45	0-3	0-3	3-4	0	3	3	0	2	3	2	0	1	0	0	3
4	Jordan Wright		03:57	0-1	0-0	0-0	0	1	1	3	0	0	0	0	0	0	1	-2
11	Braelee Albert		07:49	0-3	0-3	0-0	0	1	1	0	0	0	1	0	0	0	0	-2
21	Jon Jossell		02:08	0-0	0-0	0-0	0	0	0	0	0	0	0	0	0	0	0	5
Team							0	0	0			0		1				
<b>Totals</b>				10-27	4-17	4-8	1	15	16	5	9	28	4	4	3	2	2	1

Shooting By Period		
1st FG%	10-27	37.0%
3PT%	4-17	23.5%
FT%	4-8	50%
GM FG%	10-27	37.0%
3PT%	4-17	23.5%
FT%	4-8	50.0%

Dead Ball Rebounds: 1, 0

Technical Fouls::NONE

	MIZ	VAN
Biggest lead	3 (1st 13:57)	9 (1st 3:59)
Best Scoring Run	7(1st 1:44)	7(1st 3:59)
Lead Changes	3	
Times Tied	4	
Time with Lead	08:49	08:52

Points from	MIZ	VAN
Turnovers	4	8
Paint	14	12
Second Chance	4	3
Fast Breaks	0	3
Bench	10	0

	Period by Period Scoring	
	1st	TOT
MIZ	27	27
VAN	28	28



**Missouri at Vanderbilt**

02/26/20 Memorial Gymnasium, Nashville  
2019-20 Men's Basketball

**Game Time:** 8:00 PM  
**Game Duration:** 1:52  
**Attendance:** 8,497

**Officials:** Terry Oglesby, Ted Valentine, Mike Nance

**Period 2**

**Quarter Starters:**

<b>VAN</b>	0 Lee S	1 Disu D	2 Phippen Jr. S	3 Evans M	50 Obinna E
<b>MIZ</b>	1 Pinson X	4 Pickett J	12 Smith D	14 Nikko R	24 Brown K

Game Time	VAN	Score	Diff	MIZ
20:00	11 ALBERT B substitution out			
20:00	1 DISU D substitution in			
20:00				00 WATSON T substitution out
20:00				5 SMITH M substitution out
20:00				1 PINSON X substitution in
20:00				24 BROWN K substitution in
19:51	1 DISU D foul personal (3 - 1)			24 BROWN K foul drawn (2)
19:48	1 DISU D foul personal (4 - 2)			24 BROWN K foul drawn (3)
19:48	1 DISU D substitution out			
19:48	4 WRIGHT J substitution in			
19:41		<b>28-29</b>	<b>-1</b>	14 NIKKO R 2pt FG in the paint, dunk, made (7)
19:41				1 PINSON X assist (1)
19:18	0 LEE S 2pt FG outside the paint, jump shot missed			
19:15				1 PINSON X defensive rebound (3)
19:13				24 BROWN K 2pt FG in the paint, jump shot missed
19:10	3 EVANS M defensive rebound (4)			
19:06	0 LEE S 2pt FG fast break in the paint, driving layup made (7)	<b>30-29</b>	<b>1</b>	
19:06	3 EVANS M assist (3)			
18:43				1 PINSON X 2pt FG in the paint, layup missed
18:42	defensive rebound (18)			
18:24	0 LEE S turnover bad pass (2)			
18:15		<b>30-31</b>	<b>-1</b>	1 PINSON X 2pt FG outside the paint, pull up jump shot made (4)
17:49	50 OBINNA E foul drawn (3)			14 NIKKO R foul shooting (2 - 1)
17:49	50 OBINNA E free throw 1 - 2 made (3)	<b>31-31</b>	<b>0</b>	
17:49	50 OBINNA E free throw 2 - 2 made (4)	<b>32-31</b>	<b>1</b>	
17:33				14 NIKKO R turnover 3 seconds (1)
17:20	2 PIPPEN JR. S foul drawn (4)			12 SMITH D foul shooting (1 - 2)
17:20	2 PIPPEN JR. S free throw 1 - 2 missed			
17:20	offensive dead ball rebound (2)			
17:20				14 NIKKO R substitution out
17:20				24 BROWN K substitution out
17:20				5 SMITH M substitution in
17:20				23 TILMON J substitution in
17:20	2 PIPPEN JR. S free throw 2 - 2 missed			
17:19				5 SMITH M defensive rebound (4)
17:03		<b>32-34</b>	<b>-2</b>	1 PINSON X 3pt FG , jump shot made (7)
17:03				5 SMITH M assist (2)
16:31	4 WRIGHT J 2pt FG in the paint, layup missed			
16:29				5 SMITH M defensive rebound (5)
16:23		<b>32-36</b>	<b>-4</b>	1 PINSON X 2pt FG in the paint, driving layup made (9)
15:57	4 WRIGHT J 3pt FG , jump shot missed			
15:55				1 PINSON X defensive rebound (4)





**Missouri at Vanderbilt**

02/26/20 Memorial Gymnasium, Nashville  
2019-20 Men's Basketball

**Game Time:** 8:00 PM  
**Game Duration:** 1:52  
**Attendance:** 8,497

**Officials:** Terry Oglesby, Ted Valentine, Mike Nance

Game Time	VAN	Score	Diff	MIZ
15:51				1 PINSON X turnover bad pass (2)
15:51	Timeout media			
15:33	2 PIPPEN JR. S foul drawn (5)			1 PINSON X foul shooting (3 - 3)
15:33	2 PIPPEN JR. S free throw 1 - 2 missed			
15:33	offensive dead ball rebound (3)			
15:33	2 PIPPEN JR. S free throw 2 - 2 missed			
15:33				5 SMITH M defensive rebound (6)
15:19				1 PINSON X 3pt FG , jump shot missed
15:16	3 EVANS M defensive rebound (5)			
15:09	0 LEE S foul drawn (3)			23 TILMON J foul shooting (1 - 4)
15:09	0 LEE S free throw 1 - 2 missed			
15:09	offensive dead ball rebound (4)			
15:09	2 PIPPEN JR. S substitution out			
15:09	11 ALBERT B substitution in			
15:09				1 PINSON X substitution out
15:09				13 SMITH M substitution in
15:09	0 LEE S free throw 2 - 2 made (8)	<b>33-36</b>	<b>-3</b>	
14:42				23 TILMON J turnover travel (1)
14:42				23 TILMON J substitution out
14:42				14 NIKKO R substitution in
14:30	11 ALBERT B foul offensive (1 - 3)			13 SMITH M foul drawn (1)
14:30	11 ALBERT B turnover offensive (1)			
14:30				5 SMITH M substitution out
14:30				42 BRAUN P substitution in
14:10		<b>33-39</b>	<b>-6</b>	12 SMITH D 3pt FG , jump shot made (9)
13:46	0 LEE S 3pt FG , jump shot missed			
13:41				4 PICKETT J defensive rebound (7)
13:30		<b>33-41</b>	<b>-8</b>	14 NIKKO R 2pt FG in the paint, layup made (9)
13:30				42 BRAUN P assist (1)
13:30	50 OBINNA E foul shooting (1 - 4)			14 NIKKO R foul drawn (2)
13:30				4 PICKETT J substitution out
13:30				00 WATSON T substitution in
13:30		<b>33-42</b>	<b>-9</b>	14 NIKKO R free throw 1 - 1 made (10)
13:06	4 WRIGHT J foul drawn (1)			14 NIKKO R foul shooting (3 - 5)
13:06	4 WRIGHT J free throw 1 - 2 made (1)	<b>34-42</b>	<b>-8</b>	
13:06				13 SMITH M substitution out
13:06				14 NIKKO R substitution out
13:06				4 PICKETT J substitution in
13:06				5 SMITH M substitution in
13:06	4 WRIGHT J free throw 2 - 2 made (2)	<b>35-42</b>	<b>-7</b>	
13:02	4 WRIGHT J foul personal (4 - 5)			12 SMITH D foul drawn (1)
13:02	4 WRIGHT J substitution out			
13:02	10 WEIKERT D substitution in			
12:35				12 SMITH D 2pt FG outside the paint, pull up jump shot missed
12:33	0 LEE S defensive rebound (3)			
12:28	0 LEE S turnover lost ball (3)			12 SMITH D steal (1)
12:01	jump ball situation			
12:01	10 WEIKERT D steal (1)			12 SMITH D turnover lost ball (2)
12:01				12 SMITH D substitution out



**Missouri at Vanderbilt**

02/26/20 Memorial Gymnasium, Nashville  
2019-20 Men's Basketball

**Game Time:** 8:00 PM  
**Game Duration:** 1:52  
**Attendance:** 8,497

**Officials:** Terry Oglesby, Ted Valentine, Mike Nance

Game Time	VAN	Score	Diff	MIZ
12:01				1 PINSON X substitution in
12:01				00 WATSON T substitution out
12:01				13 SMITH M substitution in
11:41	3 EVANS M foul drawn (3)			1 PINSON X foul personal (4 - 6)
11:41	Timeout media			
11:41				1 PINSON X substitution out
11:41				42 BRAUN P substitution out
11:41				12 SMITH D substitution in
11:41				24 BROWN K substitution in
11:32	10 WEIKERT D 2pt FG in the paint, driving layup made (2)	<b>37-42</b>	<b>-5</b>	
11:12				12 SMITH D turnover lost ball (3)
10:44	3 EVANS M 2pt FG in the paint, jump shot missed			
10:42				5 SMITH M defensive rebound (7)
10:16				24 BROWN K 2pt FG in the paint, driving layup missed
10:12				24 BROWN K offensive rebound (3)
10:11		<b>37-44</b>	<b>-7</b>	24 BROWN K 2pt FG in the paint, layup made (2)
10:01	0 LEE S turnover lost ball (4)			12 SMITH D steal (2)
09:50	10 WEIKERT D foul personal (1 - 6)			13 SMITH M foul drawn (2)
09:50	10 WEIKERT D substitution out			
09:50	2 PIPPEN JR. S substitution in			
09:50				13 SMITH M substitution out
09:50				42 BRAUN P substitution in
09:50				5 SMITH M 3pt FG , jump shot missed
09:48				5 SMITH M offensive rebound (8)
09:43		<b>37-47</b>	<b>-10</b>	5 SMITH M 3pt FG , jump shot made (6)
09:43				12 SMITH D assist (3)
09:32				24 BROWN K substitution out
09:32				00 WATSON T substitution in
09:00	2 PIPPEN JR. S 3pt FG , jump shot missed			
08:57				4 PICKETT J defensive rebound (8)
08:41	3 EVANS M steal (2)			12 SMITH D turnover bad pass (4)
08:37	2 PIPPEN JR. S foul offensive (1 - 7)			00 WATSON T foul drawn (1)
08:37	2 PIPPEN JR. S turnover offensive (1)			
08:22				4 PICKETT J 2pt FG outside the paint, jump shot missed
08:20	2 PIPPEN JR. S defensive rebound (1)			
08:12	0 LEE S 2pt FG in the paint, driving layup made (10)	<b>39-47</b>	<b>-8</b>	
07:50				5 SMITH M 2pt FG in the paint, turnaround jump shot missed
07:47	0 LEE S defensive rebound (4)			
07:40	0 LEE S 2pt FG in the paint, driving layup blocked			
07:40				12 SMITH D block (1)
07:40	offensive rebound (23)			
07:40	Timeout media			
07:40				4 PICKETT J substitution out
07:40				42 BRAUN P substitution out
07:40				1 PINSON X substitution in
07:40				14 NIKKO R substitution in
07:37	0 LEE S 2pt FG in the paint, driving layup made (12)	<b>41-47</b>	<b>-6</b>	
07:13		<b>41-49</b>	<b>-8</b>	1 PINSON X 2pt FG outside the paint, pull up jump shot made (11)



**Missouri at Vanderbilt**

02/26/20 Memorial Gymnasium, Nashville  
2019-20 Men's Basketball

**Game Time:** 8:00 PM  
**Game Duration:** 1:52  
**Attendance:** 8,497

**Officials:** Terry Oglesby, Ted Valentine, Mike Nance

Game Time	VAN	Score	Diff	MIZ
06:53	0 LEE S foul drawn (4)			12 SMITH D foul personal (2 - 7)
06:53	0 LEE S 1&1 free throw 1 made (13)	<b>42-49</b>	<b>-7</b>	
06:53	0 LEE S 1&1 free throw 2 missed			
06:52				5 SMITH M defensive rebound (9)
06:30				00 WATSON T 3pt FG , jump shot missed
06:27				12 SMITH D offensive rebound (2)
06:10				1 PINSON X 3pt FG , jump shot missed
06:08	3 EVANS M defensive rebound (6)			
05:42	2 PIPPEN JR. S foul drawn (6)			12 SMITH D foul shooting (3 - 8)
05:42	2 PIPPEN JR. S free throw 1 - 2 made (16)	<b>43-49</b>	<b>-6</b>	
05:42				00 WATSON T substitution out
05:42				4 PICKETT J substitution in
05:42	11 ALBERT B substitution out			
05:42	1 DISU D substitution in			
05:42	2 PIPPEN JR. S free throw 2 - 2 made (17)	<b>44-49</b>	<b>-5</b>	
05:23				1 PINSON X 2pt FG outside the paint, jump shot missed
05:19				14 NIKKO R offensive rebound (5)
05:19		<b>44-51</b>	<b>-7</b>	14 NIKKO R 2pt FG in the paint, layup made (12)
05:07	2 PIPPEN JR. S 2pt FG in the paint, driving layup missed			
05:03	50 OBINNA E offensive rebound (4)			
05:03	50 OBINNA E 2pt FG in the paint, layup made (6)	<b>46-51</b>	<b>-5</b>	
04:46				14 NIKKO R substitution out
04:46				24 BROWN K substitution in
04:35				12 SMITH D 3pt FG , jump shot missed
04:32				5 SMITH M offensive rebound (10)
04:21		<b>46-53</b>	<b>-7</b>	1 PINSON X 2pt FG in the paint, driving layup made (13)
04:12	2 PIPPEN JR. S foul offensive (2 - 8)			5 SMITH M foul drawn (2)
04:12	2 PIPPEN JR. S turnover offensive (2)			
03:49				12 SMITH D 3pt FG , jump shot missed
03:46	3 EVANS M defensive rebound (7)			
03:39	50 OBINNA E 2pt FG in the paint, dunk, made (8)	<b>48-53</b>	<b>-5</b>	
03:39	0 LEE S assist (1)			
03:39	50 OBINNA E foul drawn (4)			5 SMITH M foul shooting (1 - 9)
03:39	Timeout media			
03:39	50 OBINNA E free throw 1 - 1 missed			
03:38				24 BROWN K defensive rebound (4)
03:20		<b>48-55</b>	<b>-7</b>	1 PINSON X 2pt FG in the paint, driving layup made (15)
03:11	0 LEE S foul offensive (1 - 9)			12 SMITH D foul drawn (2)
03:11	0 LEE S turnover offensive (5)			
03:05	50 OBINNA E foul shooting (2 - 10)			24 BROWN K foul drawn (4)
03:05		<b>48-56</b>	<b>-8</b>	24 BROWN K free throw fast break 1 - 2 made (3)
03:05		<b>48-57</b>	<b>-9</b>	24 BROWN K free throw fast break 2 - 2 made (4)
02:48	0 LEE S 3pt FG , jump shot missed			
02:45				4 PICKETT J defensive rebound (9)
02:22				1 PINSON X turnover travel (3)
02:22				24 BROWN K substitution out
02:22				14 NIKKO R substitution in
02:14	50 OBINNA E foul drawn (5)			5 SMITH M foul personal (2 - 10)
02:14	50 OBINNA E free throw 1 - 2 made (9)	<b>49-57</b>	<b>-8</b>	



**Missouri at Vanderbilt**

02/26/20 Memorial Gymnasium, Nashville  
2019-20 Men's Basketball

**Game Time:** 8:00 PM  
**Game Duration:** 1:52  
**Attendance:** 8,497

**Officials:** Terry Oglesby, Ted Valentine, Mike Nance

Game Time	VAN	Score	Diff	MIZ
02:14	50 OBINNA E free throw 2 - 2 missed			
02:13				5 SMITH M defensive rebound (11)
01:51	3 EVANS M foul personal (1 - 11)			14 NIKKO R foul drawn (3)
01:51		<b>49-58</b>	<b>-9</b>	14 NIKKO R free throw 1 - 2 made (13)
01:51	50 OBINNA E substitution out			
01:51	11 ALBERT B substitution in			
01:51		<b>49-59</b>	<b>-10</b>	14 NIKKO R free throw 2 - 2 made (14)
01:51				14 NIKKO R substitution out
01:51				42 BRAUN P substitution in
01:46	0 LEE S 2pt FG in the paint, layup blocked			
01:46				42 BRAUN P block (1)
01:42	2 PIPPEN JR. S offensive rebound (2)			
01:42	2 PIPPEN JR. S foul drawn (7)			42 BRAUN P foul personal (3 - 11)
01:42	2 PIPPEN JR. S free throw 1 - 2 made (18)	<b>50-59</b>	<b>-9</b>	
01:42				42 BRAUN P substitution out
01:42				00 WATSON T substitution in
01:42	2 PIPPEN JR. S free throw 2 - 2 made (19)	<b>51-59</b>	<b>-8</b>	
01:24				4 PICKETT J turnover bad pass (2)
01:17	0 LEE S foul drawn (5)			00 WATSON T foul shooting (1 - 12)
01:17	0 LEE S free throw 1 - 2 made (14)	<b>52-59</b>	<b>-7</b>	
01:17	0 LEE S free throw 2 - 2 missed			
01:16				5 SMITH M defensive rebound (12)
01:01				1 PINSON X turnover bad pass (4)
01:01				00 WATSON T substitution out
01:01				42 BRAUN P substitution in
00:50	2 PIPPEN JR. S 2pt FG in the paint, layup blocked			
00:50				5 SMITH M block (1)
00:46				1 PINSON X defensive rebound (5)
00:37	1 DISU D foul personal (5 - 12)			1 PINSON X foul drawn (2)
00:37	1 DISU D substitution out			
00:37	50 OBINNA E substitution in			
00:37		<b>52-60</b>	<b>-8</b>	1 PINSON X free throw 1 - 2 made (16)
00:37		<b>52-61</b>	<b>-9</b>	1 PINSON X free throw 2 - 2 made (17)
00:23	3 EVANS M 2pt FG outside the paint, turnaround jump shot missed			
00:20				4 PICKETT J defensive rebound (10)
<b>END OF GAME</b>				
<b>VAN 52-61 MIZ</b>				



Missouri at Vanderbilt

02/26/20 Memorial Gymnasium, Nashville  
2019-20 Men's Basketball

Game Time: 8:00 PM  
Game Duration: 1:52  
Attendance: 8,497

Officials: Terry Oglesby, Ted Valentine, Mike Nance

Missouri - 34

NO.	Name	F	Min	FG			3P			FT			Rebounds			Fouls		TP	AS	TO	ST	Blocks		+/-
				M-A	M-A	M-A	OR	DR	TOT	PF	FD	BS	BA											
14	Reed Nikko	F	07:41	3-3	0-0	3-3	1	0	1	2	2	9	0	1	0	0	0	0	0	0	0	0	3	
24	Kobe Brown	F	07:13	1-3	0-0	2-2	1	1	2	0	3	4	0	0	0	0	0	0	0	0	0	0	7	
1	Xavier Pinson	G	12:51	6-10	1-3	2-2	0	3	3	2	1	15	1	3	0	0	0	0	0	0	0	0	6	
4	Javon Pickett	G	17:38	0-1	0-0	0-0	0	4	4	0	0	0	0	0	1	0	0	0	0	0	0	0	12	
12	Dru Smith	G	19:40	1-4	1-3	0-0	1	0	1	3	2	3	1	3	2	3	1	3	2	1	0	0	10	
5	Mitchell Smith		15:56	1-3	1-2	0-0	2	7	9	2	1	3	1	0	0	0	1	0	0	0	0	0	5	
23	Jeremiah Tilmon		02:38	0-0	0-0	0-0	0	0	0	1	0	0	0	0	0	0	0	1	0	0	0	0	4	
13	Mark Smith		04:14	0-0	0-0	0-0	0	0	0	0	2	0	0	0	0	0	0	0	0	0	0	0	4	
42	Parker Braun		06:09	0-0	0-0	0-0	0	0	0	1	0	0	1	0	0	0	1	0	0	0	1	0	6	
00	Torrence Watson		06:00	0-1	0-1	0-0	0	0	0	1	1	0	0	0	0	0	0	0	0	0	0	0	-7	
Team							0	0	0			0			0									
<b>Totals</b>				12-25	3-9	7-7	5	15	20	12	12	34	4	9	2	3	0	10						

Shooting By Period		
2nd FG%	12-25	48.0%
3PT%	3-9	33.3%
FT%	7-7	100%
GM FG%	12-25	48.0%
3PT%	3-9	33.3%
FT%	7-7	100.0%

Dead Ball Rebounds: 0, 0

Technical Fouls::NONE

Vanderbilt - 24

NO.	Name	F	Min	FG			3P			FT			Rebounds			Fouls		TP	AS	TO	ST	Blocks		+/-
				M-A	M-A	M-A	OR	DR	TOT	PF	FD	BS	BA											
1	Dylan Disu	F	05:17	0-0	0-0	0-0	0	0	0	3	0	0	0	0	0	0	0	0	0	0	0	0	-1	
50	Ejike Obinna	C	18:46	2-2	0-0	3-5	1	0	1	2	3	7	0	0	0	0	0	0	0	0	0	0	-12	
0	Saben Lee	G	20:00	3-8	0-2	3-6	0	2	2	1	3	9	1	4	0	0	2	0	0	2	0	0	-10	
2	Scotty Pippen Jr.	G	14:41	0-3	0-1	4-8	1	1	2	2	4	4	0	2	0	0	0	1	0	0	0	0	-7	
3	Maxwell Evans	G	20:00	0-2	0-0	0-0	0	4	4	1	1	0	1	0	1	0	1	0	0	0	0	0	-10	
4	Jordan Wright		06:46	0-2	0-1	2-2	0	0	0	1	1	2	0	0	0	0	0	0	0	0	0	0	-8	
11	Braelee Albert		11:18	0-0	0-0	0-0	0	0	0	1	0	0	0	0	1	0	0	0	0	0	0	0	-2	
10	Drew Weikert		03:12	1-1	0-0	0-0	0	0	0	1	0	2	0	0	0	1	0	0	0	0	0	0		
Team						1	1	2			0			0										
<b>Totals</b>				6-18	0-4	12-21	3	8	11	12	12	24	2	7	2	0	3	-10						

Shooting By Period		
2nd FG%	6-18	33.3%
3PT%	0-4	0.0%
FT%	12-21	57.1%
GM FG%	6-18	33.3%
3PT%	0-4	0.0%
FT%	12-21	57.1%

Dead Ball Rebounds: 3, 0

Technical Fouls::NONE

	MIZ	VAN
Biggest lead	10 (2 <sup>nd</sup> 9:43)	1 (2 <sup>nd</sup> 19:06)
Best Scoring Run	6(2 <sup>nd</sup> 13:30)	4(2 <sup>nd</sup> 11:32)
Lead Changes	5	
Times Tied	1	
Time with Lead	18:04	01:37

Points from	MIZ	VAN
Turnovers	10	4
Paint	14	12
Second Chance	9	6
Fast Breaks	2	2
Bench	3	4

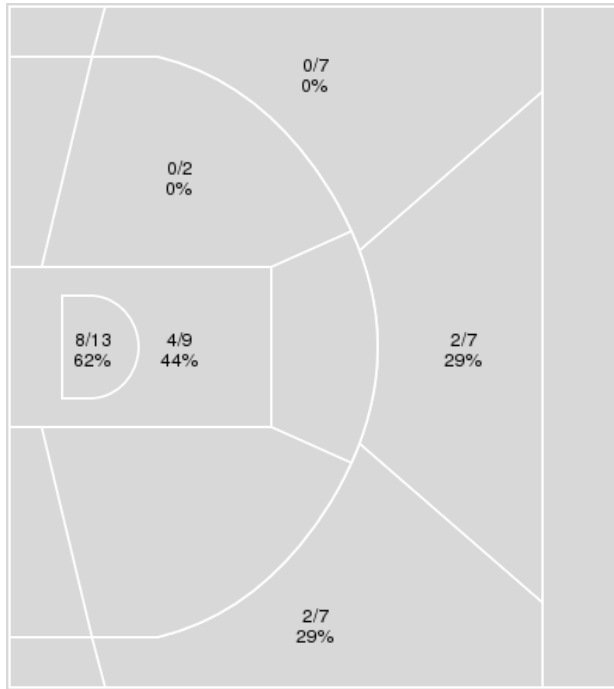
	Period by Period Scoring	
	2nd	TOT
MIZ	34	34
VAN	24	24



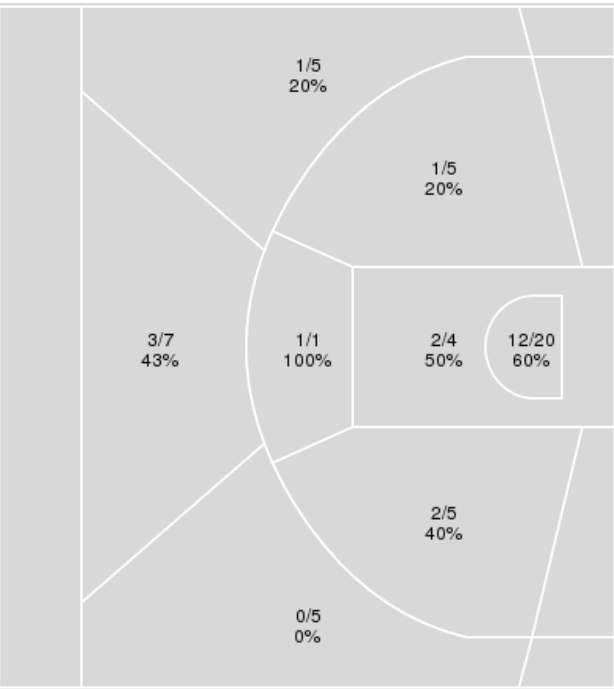
**Officials:** Terry Oglesby, Ted Valentine, Mike Nance

{ Players => 0, 1, 2, 3, 4, 5, 10, 11, 13, 14, 15, 20, 21, 24, 42, 50, 55, 130; } FG Types => All; Results => All;

**Vanderbilt**



**Missouri**



Vanderbilt	M/A	%
Field Goals	16/45	36
2 Points	12/24	50
3 Points	4/21	19
Free Throws	16/29	55

Missouri	M/A	%
Field Goals	22/52	42
2 Points	18/35	51
3 Points	4/17	24
Free Throws	13/15	87



**Missouri at Vanderbilt**

02/26/20 Memorial Gymnasium, Nashville  
2019-20 Men's Basketball

Game Time: 8:00 PM  
Game Duration: 1:52  
Attendance: 8,497

Officials: Terry Oglesby, Ted Valentine, Mike Nance

**Missouri**

No	Name	Mins		Score		Points Diff		Points per Min		Assists		Rebounds		Steals		Turnovers	
		On	Off	On	Off	On	Off	On	Off	On	Off	On	Off	On	Off	On	Off
00	Torrence Watson	12:11	27:49	12 - 16	49 - 36	-4	13	0.98	1.76	0	7	11	31	1	2	6	10
1	Xavier Pinson	20:45	19:15	33 - 27	28 - 25	6	3	1.59	1.45	4	3	27	15	0	3	8	8
4	Javon Pickett	33:02	06:58	49 - 40	12 - 12	9	0	1.48	1.72	7	0	33	9	3	0	15	1
5	Mitchell Smith	26:06	13:54	39 - 31	22 - 21	8	1	1.49	1.58	3	4	32	10	2	1	10	6
12	Dru Smith	38:12	01:48	59 - 52	2 - 0	7	2	1.54	1.11	7	0	40	2	3	0	15	1
13	Mark Smith	14:14	25:46	22 - 22	39 - 30	0	9	1.55	1.51	2	5	13	29	2	1	6	10
14	Reed Nikko	18:02	21:58	33 - 23	28 - 29	10	-1	1.83	1.27	5	2	19	23	1	2	4	12
23	Jeremiah Tilmon	08:59	31:01	11 - 14	50 - 38	-3	12	1.22	1.61	1	6	12	30	0	3	4	12
24	Kobe Brown	19:02	20:58	32 - 25	29 - 27	7	2	1.68	1.38	4	3	17	25	2	1	8	8
42	Parker Braun	09:27	30:33	15 - 10	46 - 42	5	4	1.59	1.51	2	5	6	36	1	2	4	12

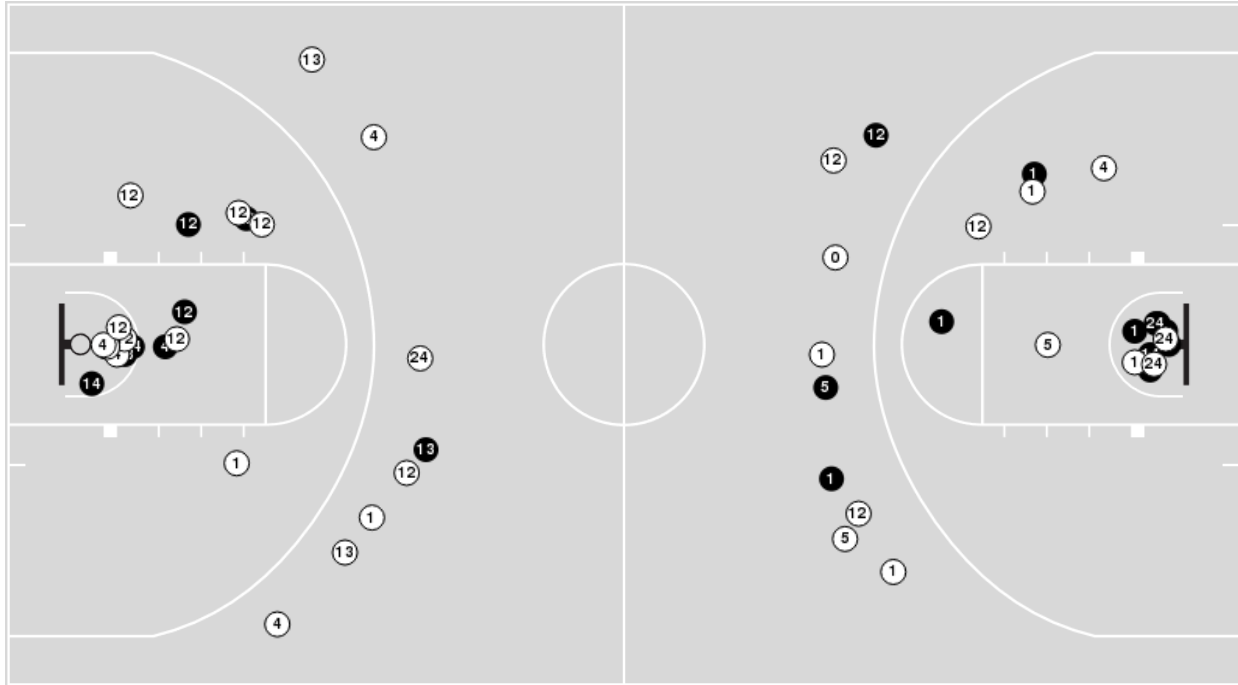
**Vanderbilt**

No	Name	Mins		Score		Points Diff		Points per Min		Assists		Rebounds		Steals		Turnovers	
		On	Off	On	Off	On	Off	On	Off	On	Off	On	Off	On	Off	On	Off
0	Saben Lee	37:52	02:08	45 - 59	7 - 2	-14	5	1.19	3.28	5	1	25	2	5	0	11	0
1	Dylan Disu	20:39	19:21	31 - 29	21 - 32	2	-11	1.50	1.09	4	2	17	10	2	3	5	6
2	Scotty Pippen Jr.	31:59	08:01	44 - 50	8 - 11	-6	-3	1.38	1.00	6	0	23	4	4	1	8	3
3	Maxwell Evans	38:45	01:15	52 - 59	0 - 2	-7	-2	1.34	0.00	6	0	26	1	5	0	11	0
4	Jordan Wright	10:43	29:17	10 - 20	42 - 41	-10	1	0.93	1.43	1	5	7	20	0	5	2	9
10	Drew Weikert	03:12	36:48	2 - 2	50 - 59	0	-9	0.63	1.36	0	6	1	26	1	4	2	9
11	Braelee Albert	19:07	20:53	23 - 27	29 - 34	-4	-5	1.20	1.39	1	5	12	15	3	2	5	6
21	Jon Jossell	02:08	37:52	7 - 2	45 - 59	5	-14	3.28	1.19	1	5	2	25	0	5	0	11
50	Ejike Obinna	35:35	04:25	46 - 57	6 - 4	-11	2	1.29	1.36	6	0	22	5	5	0	11	0

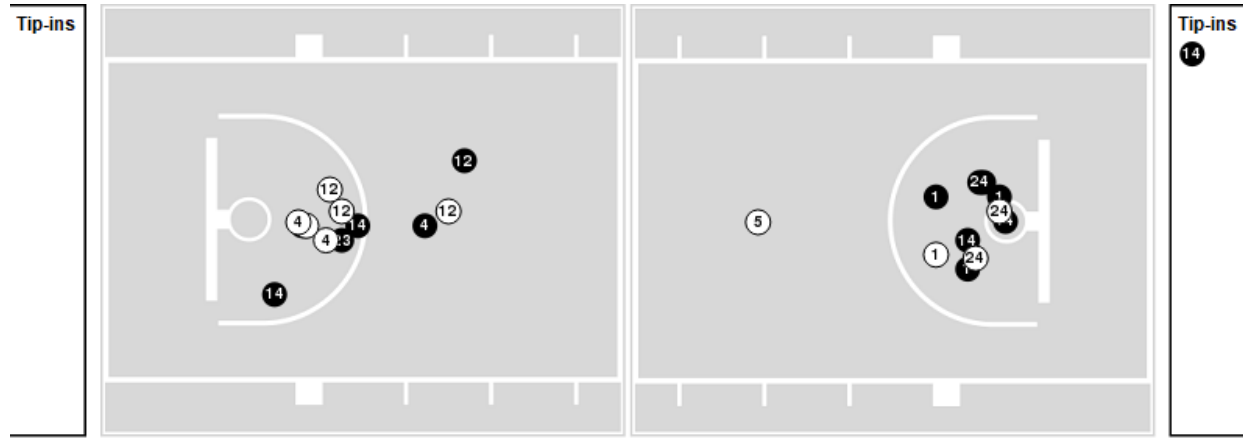


Players => AllFG Types=>AllResults=>All  
**Missouri**

**All Field Goals**



**Blow Up Chart**



● Made ○ Missed N - Player Number

Missouri	M/A	%
Field Goals	22/52	42
2 Points	18/35	51
3 Points	4/17	24
Free Throws	13/15	87

Missouri	M/A	%
Points in the Paint	28 (14 / 24)	58
Fast Break Points	2 (2/2)	100
Second Chance Points	13 (6/7)	86
Effective FG%	46	



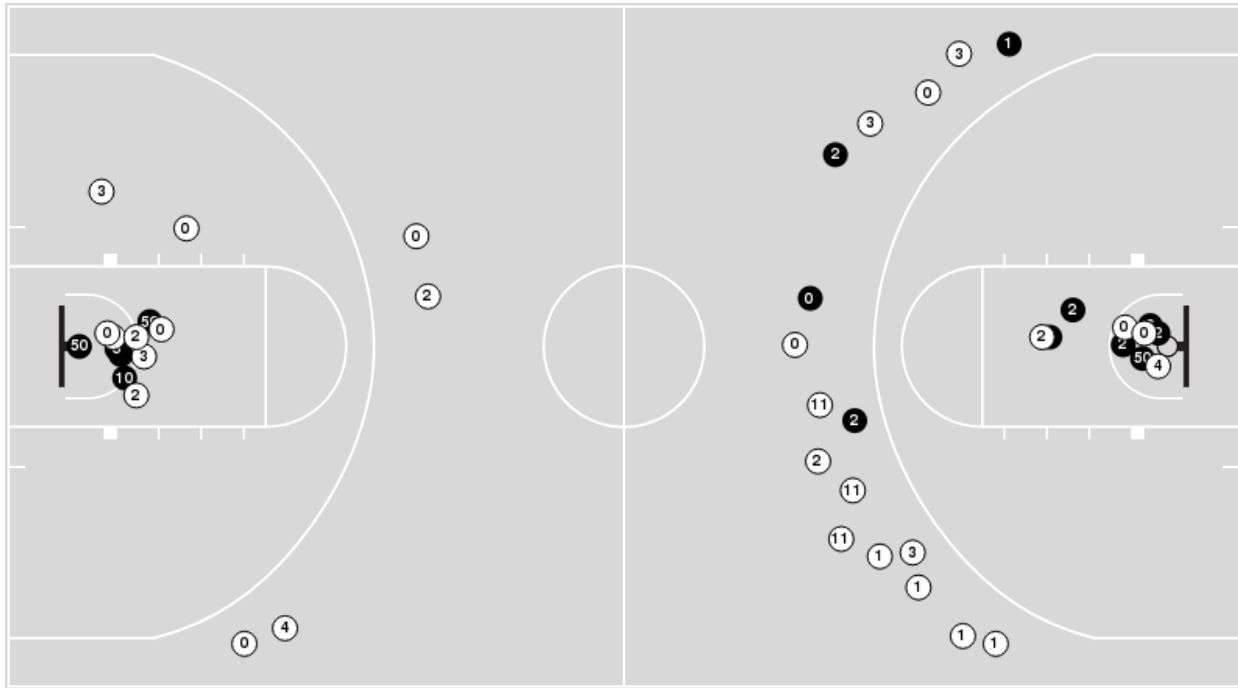


**Officials:** Terry Oglesby, Ted Valentine, Mike Nance

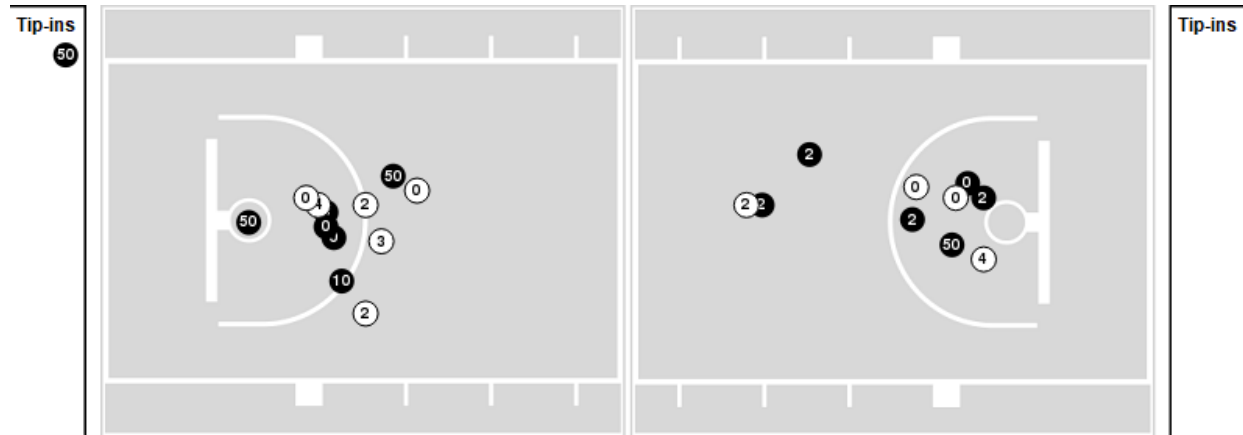
Players => 0, 1, 2, 3, 4, 5, 10, 11, 13, 14, 15, 20, 21, 24, 42, 50, 55, 130FG Types=>AllResults=>All

### Vanderbilt

#### All Field Goals



#### Blow Up Chart



● Made ○ Missed N - Player Number

Vanderbilt	M/A	%
Field Goals	16/45	36
2 Points	12/24	50
3 Points	4/21	19
Free Throws	16/29	55

Vanderbilt	M/A	%
Points in the Paint	24 (12 / 22)	55
Fast Break Points	5 (3/4)	75
Second Chance Points	9 (5/5)	100
Effective FG%	40	



**Missouri at Vanderbilt**

02/26/20 Memorial Gymnasium, Nashville  
2019-20 Men's Basketball

**Game Time:** 8:00 PM  
**Game Duration:** 1:52  
**Attendance:** 8,497

**Officials:** Terry Oglesby, Ted Valentine, Mike Nance

**Missouri**

Lineup	Quarter On	Time On	Quarter Off	Time Off	Time on Court	Score	Score Diff	Reb	Stl	Tov	Ass	PPP
1- Pinson X/ 4- Pickett J/ 12- Smith D/ 14- Nikko R/ 24- Brown K/	1	20:00	1	17:00	03:00	4-6	-2	3	0	1	1	0.8000
4- Pickett J/ 12- Smith D/ 13- Smith M/ 14- Nikko R/ 24- Brown K/	1	17:00	1	14:22	02:38	3-0	3	4	1	2	1	0.5000
00- Watson T/ 1- Pinson X/ 5- Smith M/ 13- Smith M/ 23- Tilmon J/	1	14:22	1	13:23	00:59	2-0	2	1	0	0	0	1.5152
00- Watson T/ 1- Pinson X/ 4- Pickett J/ 5- Smith M/ 23- Tilmon J/	1	13:23	1	12:54	00:29	0-0	0	1	0	1	0	0.0000
1- Pinson X/ 4- Pickett J/ 5- Smith M/ 12- Smith D/ 23- Tilmon J/	1	12:54	1	11:42	01:12	0-0	0	2	0	0	0	0.0000
1- Pinson X/ 4- Pickett J/ 5- Smith M/ 12- Smith D/ 14- Nikko R/	1	11:42	1	10:17	01:25	2-3	-1	1	0	0	1	0.6667
4- Pickett J/ 12- Smith D/ 13- Smith M/ 14- Nikko R/ 24- Brown K/	1	10:17	1	10:12	00:05	1-0	1	0	0	0	0	2.2727
4- Pickett J/ 12- Smith D/ 13- Smith M/ 24- Brown K/ 42- Braun P/	1	10:12	1	07:35	02:37	4-5	-1	1	0	1	0	1.3333
00- Watson T/ 4- Pickett J/ 12- Smith D/ 24- Brown K/ 42- Braun P/	1	07:35	1	06:54	00:41	0-0	0	0	0	1	0	0.0000
00- Watson T/ 12- Smith D/ 13- Smith M/ 23- Tilmon J/ 24- Brown K/	1	06:54	1	06:05	00:49	0-5	-5	0	0	0	0	0.0000
1- Pinson X/ 5- Smith M/ 12- Smith D/ 13- Smith M/ 23- Tilmon J/	1	06:05	1	05:16	00:49	2-1	1	4	0	1	0	1.0000
4- Pickett J/ 5- Smith M/ 12- Smith D/ 13- Smith M/ 23- Tilmon J/	1	05:16	1	03:13	02:03	2-7	-5	0	0	0	0	0.6667
00- Watson T/ 5- Smith M/ 12- Smith D/ 14- Nikko R/ 24- Brown K/	1	03:13	1	01:14	01:59	5-1	4	2	0	0	0	1.5060
00- Watson T/ 4- Pickett J/ 5- Smith M/ 12- Smith D/ 14- Nikko R/	1	01:14	2	20:00	01:14	2-0	2	3	0	0	0	0.6667
1- Pinson X/ 4- Pickett J/ 12- Smith D/ 14- Nikko R/ 24- Brown K/	2	20:00	2	17:20	02:40	4-4	0	1	0	1	1	0.8000
1- Pinson X/ 4- Pickett J/ 5- Smith M/ 12- Smith D/ 23- Tilmon J/	2	17:20	2	15:09	02:11	5-0	5	4	0	1	1	1.2500
4- Pickett J/ 5- Smith M/ 12- Smith D/ 13- Smith M/ 23- Tilmon J/	2	15:09	2	14:42	00:27	0-1	-1	0	0	1	0	0.0000
4- Pickett J/ 5- Smith M/ 12- Smith D/ 13- Smith M/ 14- Nikko R/	2	14:42	2	14:30	00:12	0-0	0	0	0	0	0	0.0000
4- Pickett J/ 12- Smith D/ 13- Smith M/ 14- Nikko R/ 42- Braun P/	2	14:30	2	13:30	01:00	5-0	5	1	0	0	1	2.5000
00- Watson T/ 12- Smith D/ 13- Smith M/ 14- Nikko R/ 42- Braun P/	2	13:30	2	13:06	00:24	1-1	0	0	0	0	0	2.2727
00- Watson T/ 4- Pickett J/ 5- Smith M/ 12- Smith D/ 42- Braun P/	2	13:06	2	12:01	01:05	0-1	-1	0	1	1	0	0.0000
00- Watson T/ 1- Pinson X/ 4- Pickett J/ 5- Smith M/ 42- Braun P/	2	12:01	2	12:01	00:00	0-0	0	0	0	0	0	0.0000
1- Pinson X/ 4- Pickett J/ 5- Smith M/ 13- Smith M/ 42- Braun P/	2	12:01	2	11:41	00:20	0-0	0	0	0	0	0	0.0000
4- Pickett J/ 5- Smith M/ 12- Smith D/ 13- Smith M/ 24- Brown K/	2	11:41	2	09:50	01:51	2-2	0	2	1	1	0	1.0000
4- Pickett J/ 5- Smith M/ 12- Smith D/ 24- Brown K/ 42- Braun P/	2	09:50	2	09:32	00:18	3-0	3	1	0	0	1	3.0000
00- Watson T/ 4- Pickett J/ 5- Smith M/ 12- Smith D/ 42- Braun P/	2	09:32	2	07:40	01:52	0-2	-2	1	0	1	0	0.0000
00- Watson T/ 1- Pinson X/ 5- Smith M/ 12- Smith D/ 14- Nikko R/	2	07:40	2	05:42	01:58	2-4	-2	2	0	0	0	1.0000
1- Pinson X/ 4- Pickett J/ 5- Smith M/ 12- Smith D/ 14- Nikko R/	2	05:42	2	04:46	00:56	2-3	-1	1	0	0	0	2.0000
1- Pinson X/ 4- Pickett J/ 5- Smith M/ 12- Smith D/ 24- Brown K/	2	04:46	2	02:22	02:24	6-2	4	3	0	1	0	1.2295
1- Pinson X/ 4- Pickett J/ 5- Smith M/ 12- Smith D/ 14- Nikko R/	2	02:22	2	01:51	00:31	2-1	1	1	0	0	0	2.2727
1- Pinson X/ 4- Pickett J/ 5- Smith M/ 12- Smith D/ 42- Braun P/	2	01:51	2	01:42	00:09	0-1	-1	0	0	0	0	0.0000
00- Watson T/ 1- Pinson X/ 4- Pickett J/ 5- Smith M/ 12- Smith D/	2	01:42	2	01:01	00:41	0-2	-2	1	0	2	0	0.0000
1- Pinson X/ 4- Pickett J/ 5- Smith M/ 12- Smith D/ 42- Braun P/	2	01:01	2	00:00	01:01	2-0	2	2	0	0	0	2.2727



**Missouri at Vanderbilt**

02/26/20 Memorial Gymnasium, Nashville  
2019-20 Men's Basketball

**Game Time:** 8:00 PM  
**Game Duration:** 1:52  
**Attendance:** 8,497

**Officials:** Terry Oglesby, Ted Valentine, Mike Nance

**Vanderbilt**

Lineup	Quarter On	Time On	Quarter Off	Time Off	Time on Court	Score	Score Diff	Reb	Stl	Tov	Ass	PPP
0- Lee S/ 1- Disu D/ 2- Pippen Jr. S/ 3- Evans M/ 50- Obinna E/	1	20:00	1	14:09	05:51	6-7	-1	5	1	2	1	0.5455
0- Lee S/ 1- Disu D/ 2- Pippen Jr. S/ 4- Wright J/ 50- Obinna E/	1	14:09	1	13:23	00:46	0-2	-2	0	0	0	0	0.0000
0- Lee S/ 1- Disu D/ 2- Pippen Jr. S/ 4- Wright J/ 11- Albert B/	1	13:23	1	12:54	00:29	0-0	0	1	0	0	0	0.0000
0- Lee S/ 1- Disu D/ 3- Evans M/ 4- Wright J/ 11- Albert B/	1	12:54	1	10:12	02:42	3-3	0	3	0	0	0	0.7500
0- Lee S/ 2- Pippen Jr. S/ 3- Evans M/ 11- Albert B/ 50- Obinna E/	1	10:12	1	07:35	02:37	5-4	1	0	1	1	1	1.0000
0- Lee S/ 1- Disu D/ 2- Pippen Jr. S/ 3- Evans M/ 50- Obinna E/	1	07:35	1	05:16	02:19	6-2	4	2	1	0	1	1.8072
1- Disu D/ 2- Pippen Jr. S/ 3- Evans M/ 21- Jossell J/ 50- Obinna E/	1	05:16	1	03:08	02:08	7-2	5	2	0	0	1	1.8041
0- Lee S/ 1- Disu D/ 2- Pippen Jr. S/ 3- Evans M/ 50- Obinna E/	1	03:08	1	02:01	01:07	0-3	-3	1	0	1	0	0.0000
0- Lee S/ 2- Pippen Jr. S/ 3- Evans M/ 11- Albert B/ 50- Obinna E/	1	02:01	2	20:00	02:01	1-4	-3	2	0	0	0	0.4310
0- Lee S/ 1- Disu D/ 2- Pippen Jr. S/ 3- Evans M/ 50- Obinna E/	2	20:00	2	19:48	00:12	0-0	0	0	0	0	0	0.0000
0- Lee S/ 2- Pippen Jr. S/ 3- Evans M/ 4- Wright J/ 50- Obinna E/	2	19:48	2	15:09	04:39	4-9	-5	3	0	1	1	0.4950
0- Lee S/ 3- Evans M/ 4- Wright J/ 11- Albert B/ 50- Obinna E/	2	15:09	2	13:02	02:07	3-6	-3	0	0	1	0	0.9036
0- Lee S/ 3- Evans M/ 10- Weikert D/ 11- Albert B/ 50- Obinna E/	2	13:02	2	09:50	03:12	2-2	0	1	1	2	0	0.5000
0- Lee S/ 2- Pippen Jr. S/ 3- Evans M/ 11- Albert B/ 50- Obinna E/	2	09:50	2	05:42	04:08	6-5	1	4	1	1	0	1.1278
0- Lee S/ 1- Disu D/ 2- Pippen Jr. S/ 3- Evans M/ 50- Obinna E/	2	05:42	2	01:51	03:51	6-9	-3	2	0	2	1	0.8876
0- Lee S/ 1- Disu D/ 2- Pippen Jr. S/ 3- Evans M/ 11- Albert B/	2	01:51	2	00:37	01:14	3-1	2	1	0	0	0	1.0870
0- Lee S/ 2- Pippen Jr. S/ 3- Evans M/ 11- Albert B/ 50- Obinna E/	2	00:37	2	00:00	00:37	0-2	-2	0	0	0	0	0.0000



**Missouri at Vanderbilt**

02/26/20 Memorial Gymnasium, Nashville  
2019-20 Men's Basketball

**Game Time:** 8:00 PM  
**Game Duration:** 1:52  
**Attendance:** 8,497

**Officials:** Terry Oglesby, Ted Valentine, Mike Nance

**Missouri**

Lineup	Time	Score	Score Diff	Pts/Min	Reb	Stl	Tov	Ass	PPP
1- Pinson X/ 4- Pickett J/ 12- Smith D/ 14- Nikko R/ 24- Brown K/	05:40	8-10	-2	1.4118	4	0	2	2	0.8000
1- Pinson X/ 4- Pickett J/ 5- Smith M/ 12- Smith D/ 23- Tilmon J/	03:23	5-0	5	1.4778	6	0	1	1	1.0000
00- Watson T/ 4- Pickett J/ 5- Smith M/ 12- Smith D/ 42- Braun P/	02:57	0-3	-3	0.0000	1	1	2	0	0.0000
1- Pinson X/ 4- Pickett J/ 5- Smith M/ 12- Smith D/ 14- Nikko R/	02:52	6-7	-1	2.0930	3	0	0	1	1.2295
4- Pickett J/ 12- Smith D/ 13- Smith M/ 14- Nikko R/ 24- Brown K/	02:43	4-0	4	1.4724	4	1	2	1	0.6211
4- Pickett J/ 12- Smith D/ 13- Smith M/ 24- Brown K/ 42- Braun P/	02:37	4-5	-1	1.5287	1	0	1	0	1.3333
4- Pickett J/ 5- Smith M/ 12- Smith D/ 13- Smith M/ 23- Tilmon J/	02:30	2-8	-6	0.8000	0	0	1	0	0.5000
1- Pinson X/ 4- Pickett J/ 5- Smith M/ 12- Smith D/ 24- Brown K/	02:24	6-2	4	2.5000	3	0	1	0	1.2295
00- Watson T/ 5- Smith M/ 12- Smith D/ 14- Nikko R/ 24- Brown K/	01:59	5-1	4	2.5210	2	0	0	0	1.5060
00- Watson T/ 1- Pinson X/ 5- Smith M/ 12- Smith D/ 14- Nikko R/	01:58	2-4	-2	1.0169	2	0	0	0	1.0000
4- Pickett J/ 5- Smith M/ 12- Smith D/ 13- Smith M/ 24- Brown K/	01:51	2-2	0	1.0811	2	1	1	0	1.0000
00- Watson T/ 4- Pickett J/ 5- Smith M/ 12- Smith D/ 14- Nikko R/	01:14	2-0	2	1.6216	3	0	0	0	0.6667
1- Pinson X/ 4- Pickett J/ 5- Smith M/ 12- Smith D/ 42- Braun P/	01:10	2-1	1	1.7143	2	0	0	0	2.2727
4- Pickett J/ 12- Smith D/ 13- Smith M/ 14- Nikko R/ 42- Braun P/	01:00	5-0	5	5.0000	1	0	0	1	2.5000
00- Watson T/ 1- Pinson X/ 5- Smith M/ 13- Smith M/ 23- Tilmon J/	00:59	2-0	2	2.0339	1	0	0	0	1.5152
00- Watson T/ 12- Smith D/ 13- Smith M/ 23- Tilmon J/ 24- Brown K/	00:49	0-5	-5	0.0000	0	0	0	0	0.0000
1- Pinson X/ 5- Smith M/ 12- Smith D/ 13- Smith M/ 23- Tilmon J/	00:49	2-1	1	2.4490	4	0	1	0	1.0000
00- Watson T/ 4- Pickett J/ 12- Smith D/ 24- Brown K/ 42- Braun P/	00:41	0-0	0	0.0000	0	0	1	0	0.0000
00- Watson T/ 1- Pinson X/ 4- Pickett J/ 5- Smith M/ 12- Smith D/	00:41	0-2	-2	0.0000	1	0	2	0	0.0000
00- Watson T/ 1- Pinson X/ 4- Pickett J/ 5- Smith M/ 23- Tilmon J/	00:29	0-0	0	0.0000	1	0	1	0	0.0000
00- Watson T/ 12- Smith D/ 13- Smith M/ 14- Nikko R/ 42- Braun P/	00:24	1-1	0	2.5000	0	0	0	0	2.2727
1- Pinson X/ 4- Pickett J/ 5- Smith M/ 13- Smith M/ 42- Braun P/	00:20	0-0	0	0.0000	0	0	0	0	0.0000
4- Pickett J/ 5- Smith M/ 12- Smith D/ 24- Brown K/ 42- Braun P/	00:18	3-0	3	10.0000	1	0	0	1	3.0000
4- Pickett J/ 5- Smith M/ 12- Smith D/ 13- Smith M/ 14- Nikko R/	00:12	0-0	0	0.0000	0	0	0	0	0.0000
00- Watson T/ 1- Pinson X/ 4- Pickett J/ 5- Smith M/ 42- Braun P/	00:00	0-0	0	NaN	0	0	0	0	0.0000



**Missouri at Vanderbilt**

02/26/20 Memorial Gymnasium, Nashville  
2019-20 Men's Basketball

**Game Time:** 8:00 PM  
**Game Duration:** 1:52  
**Attendance:** 8,497

**Officials:** Terry Oglesby, Ted Valentine, Mike Nance

**Vanderbilt**

Lineup	Time	Score	Score Diff	Pts/Min	Reb	Stl	Tov	Ass	PPP
0- Lee S/ 1- Disu D/ 2- Pippen Jr. S/ 3- Evans M/ 50- Obinna E/	13:20	18-21	-3	1.3500	10	2	5	3	0.7799
0- Lee S/ 2- Pippen Jr. S/ 3- Evans M/ 11- Albert B/ 50- Obinna E/	09:23	12-15	-3	1.2789	6	2	2	1	0.8798
0- Lee S/ 2- Pippen Jr. S/ 3- Evans M/ 4- Wright J/ 50- Obinna E/	04:39	4-9	-5	0.8602	3	0	1	1	0.4950
0- Lee S/ 3- Evans M/ 10- Weikert D/ 11- Albert B/ 50- Obinna E/	03:12	2-2	0	0.6250	1	1	2	0	0.5000
0- Lee S/ 1- Disu D/ 3- Evans M/ 4- Wright J/ 11- Albert B/	02:42	3-3	0	1.1111	3	0	0	0	0.7500
1- Disu D/ 2- Pippen Jr. S/ 3- Evans M/ 21- Jossell J/ 50- Obinna E/	02:08	7-2	5	3.2813	2	0	0	1	1.8041
0- Lee S/ 3- Evans M/ 4- Wright J/ 11- Albert B/ 50- Obinna E/	02:07	3-6	-3	1.4173	0	0	1	0	0.9036
0- Lee S/ 1- Disu D/ 2- Pippen Jr. S/ 3- Evans M/ 11- Albert B/	01:14	3-1	2	2.4324	1	0	0	0	1.0870
0- Lee S/ 1- Disu D/ 2- Pippen Jr. S/ 4- Wright J/ 50- Obinna E/	00:46	0-2	-2	0.0000	0	0	0	0	0.0000
0- Lee S/ 1- Disu D/ 2- Pippen Jr. S/ 4- Wright J/ 11- Albert B/	00:29	0-0	0	0.0000	1	0	0	0	0.0000