

* Southeastern Conference Game; All games broadcast live on WNSR 560 AM, 95.9 FM & vucommodores.com; All times Central and subject to change

COMMODORE BASKETBALL



THE VANDERBILT WOMEN ...

- Made **15 consecutive appearances** in the **NCAA tournament (2000-2014)**, including 12 straight under head coach Melanie Balcomb (2002-2014).
- Have won at least one NCAA Tournament game in 10 of the past 13 seasons during the Balcomb Era.
- Rank **No. 2** in the SEC in **all-time home wins**, trailing only LSU.
- Have made 27 all-time appearances in the NCAA Tournament, the third most among SEC teams (behind only Tennessee and Georgia)
- Were one of only eight schools to make it to the NCAA Tournament every year from 2000-2014, along with UConn, Duke, Georgia, Notre Dame, Oklahoma, Stanford and Tennessee.



Head Coach Melanie Balcomb ...

- Is the **all-time wins leader** in the Vanderbilt WBB history.
- Is the **SEC's active leader in conference wins**. (Balcomb's SEC record: 115-79)
- Has won 20 or more games in 11 of her 13 seasons in Nashville.
- Has led Vanderbilt to **three SEC Tournament championships** and **four trips** to the **Sweet 16**.
- Has directed her teams to a top-50 national finish in field goal percentage and three-point percentage in all 13 of her seasons at Vanderbilt.
- Was one of only five coaches to lead their teams to the NCAA Tournament each season from 2014-15. The others were: Geno Auriemma (Connecticut), Tara VanDerveer (Stanford), Joanne P. McCallie (Mich. State/Duke), Muffet McGraw (Notre Dame) and Andy Landers (Georgia).

COMMODORE ROSTER

Numerical Roster

1	Rebekah Dahlman	Guard	5-9	RS SO	Braham, Minn. - Braham Area
3	Rachel Bell	Guard	5-10	SO	Cumberland Furnace, Tenn. - Creek Wood
12	Myka Dancy	Guard	5-9	SO	Antioch, Tenn. - Antioch (Tenn.) High
15	Jasmine Jenkins	Guard	5-8	SR	Gainesville, Ga. - East Hall
22	Marqu'es Webb	Forward	6-1	JR	Hoover, Ala. - Hoover
23	Minta Spears	Guard	5-10	RS JR	Bullard, Tx. - Texas Tech
24	Kristen Gaffney	Forward	6-1	RS JR	Cary, N.C. - Green Hope
25	Morgan Batey	Guard	5-10	SR	Atlanta, Ga. - Pace Academy
33	Christa Reed	Guard	5-11	SO	Bay St. Louis, Miss. - Bay
35	Kendall Shaw	Center	6-4	RS JR	Mont Belvieu, Texas - Barbers Hill
41	Miaya Seawright	Guard	5-7	SO	Simpsonville, S.C. - Hillcrest High
44	Rayte'a Long	Forward	6-0	SR	Dayton, Ohio - Chaminad

Coaching & Support Staff

Head Coach:

Melanie Balcomb, 14th year (Trenton State, 1984)

Assistant Coaches:

Kim Rosamond, 9th year (Ole Miss, 1998)

Ashley Earley, 3rd year (Vanderbilt, 2005)

Wendale Farrow, 1st year (Eastern Michigan, 2009)

Director of Basketball Operations:

Jon Erickson, 3rd year (Connecticut, 1997)

Certified Athletic Trainer:

Kim Moseley, 2nd year (Southern Mississippi, 1980)

Strength & Conditioning Coach:

Kandice King, 3rd year

Strength & Conditioning Coach:

Megan Lueck, 1st year

Administrative Assistant:

Vicki Spina, 21st year

Pronunciations

Melanie BALCOMB.....	BALL-com
Morgan BATEY.....	bay-tee (rhymes with 'matey')
RAYTE'A Long.....	ray-TEE-ah
Rebekah DAHLMAN.....	DOLL-man
MARQU'ES Webb.....	mar-KEZ
MIAYA Seawright.....	MY-ah
MYKA Dancy.....	MIKE-ah

Commodores by Height

Kendall Shaw	6-4
Kristen Gaffney	6-1
Marqu'es Webb	6-1
Rayte'a Long	6-0
Christa Reed	5-11
Morgan Batey	5-10
Rachel Bell	5-10
Minta Spears	5-10
Rebekah Dahlman	5-9
Myka Dancy	5-9
Jasmine Jenkins	5-8
Miaya Seawright	5-7

VANDERBILT NEWS & NOTES

- **Teams:** Vanderbilt (13-5, 2-3) vs. Alabama (13-6, 2-4)
- **Day, Date:** Monday, Jan. 25
- **Tip-off time:** 6 p.m.
- **Site:** Memorial Gym (Nashville, Tenn.)
- **Radio:** 560 AM / 95.9 FM (Charlie Mattos on play-by-play)
- **TV:** SEC Network

A CLOSER LOOK AT TODAY'S GAME

Two weeks ago, the Vanderbilt women saddled Alabama with its first home loss of the season. Today, the Commodores are looking to prevent the Tide from earning its first road win.

Riding a two-month hot streak that has featured 12 wins in the past 15 games, Vanderbilt (13-5, 2-3) will have a chance to even its SEC record today against the Tide (13-6, 2-4), who have gone 0-5 on the road this season, including 0-3 in SEC play.

Today's contest comes just 15 days after Vanderbilt defeated Alabama 54-48 in Tuscaloosa on Jan. 10. Alabama entered that game with a 10-0 record at home, and the loss to the Commodores remains the Tide's only home loss of the season.

The Commodores enter today's game with history on their side. They own a 32-12 lead in the all-time series against Alabama, including winning 19 of the past 21 meetings. Vanderbilt is 17-1 all-time against Alabama at Memorial Gym, with the lone loss coming during the 2013-14 season.

UPDATE ON THE 'DORES

The Commodores, who closed out their non-conference schedule with 10 straight wins, are just two victories away from matching their win total from last year, when they finished 15-16 and missed the NCAA Tournament for the first since 1999.

Vanderbilt enters today's game with hopes of bouncing back from Thursday's 58-49 loss to No. 18/22 Tennessee in Knoxville, where the Commodores saw a late-game comeback bid come up short.

Vanderbilt trailed by 14 points in the fourth quarter before rallying to trim the deficit to 52-49 with just under two minutes remaining. The Commodores, however, committed back-to-back turnovers in the final minute and Tennessee hit six free throws in final 15 seconds to secure the win.

The defeat ended a two-game SEC winning streak for the Commodores, who were seeking their first-ever win in Knoxville. (VU is now 0-31 on the Lady Vols' home floor).

AMONG THE BEST

Vanderbilt continues to produce some impressive numbers on both ends of the floor.

The Commodores' lock-down defense, which is beginning to gain more and more attention, ranks No. 7 in the nation -- and first in the SEC -- in points allowed per game at 51.4. The Commodores have limited opponents to 59 points or less in 14 of 18 games this season, and have surrendered 49 points or less in seven games.

Vanderbilt also ranks No. 10 in the country -- and No. 1 in the SEC -- in field-goal percentage (47.0 percent). The Commodores have ranked among the nation's Top-20 in field-goal percentage in 12 of the past 13 seasons since Balcomb's arrival.

Additionally, Vanderbilt ranks 18th in the nation, and second, in the SEC in 3-point percentage at 37.1, and the Commodores are limiting their opponents to 26.2 rebounds per game, easily the best mark in the SEC. (Missouri is second at 32.7.

JAMMING THE GYM & BACKING PAT

Today's contest is the annual Jam the Gym game at Memorial Gym. Vanderbilt fans had the opportunity to purchase \$1 tickets -- and hot dogs are also on sale for \$1. ... The game is also Vanderbilt's "We Back Pat" game as the Commodores take part in the SEC's initiative focused on building support for The Pat Summitt Foundation and the fight against Alzheimer's disease.

STAR POWER

Vanderbilt is getting steady contributions from a wide range of players. Here's a quick look at who's doing what for the Commodores:

- ♦ Sophomore Christa Reed is Vanderbilt's top scorer at 11.1 points per game, and is leading the SEC in 3-point accuracy at 44.0 percent. Reed also ranks sixth in the conference in 3-pointers per game at 2.1.
- ♦ Point guard Minta Spears ranks fifth in the SEC in assists (4.6 apg) and fourth in the SEC in minutes played (33.4 mpg).
- ♦ Junior Marque's Webb is VU's top rebounder at 5.0 per game, and collected a career-high 13 boards on Thursday against Tennessee.
- ♦ Senior Rayte'a Long is having the best season of her career, shooting 67.5 percent from the floor and ranking second on the team in rebounding at 4.0.

LONG RANGE PLANS

After a one-year hiatus, Vanderbilt's perimeter attack is back in business this season.

Fueled by the sharp-shooting of sophomore Christa Reed, who is leading the SEC in 3-point accuracy at 44.0 percent, the Commodores have made five or more 3-pointers in 15 of their 18 games.

For the season, the Commodores are shooting 36.7 percent from 3-point range, which ranks second in the SEC and 18th in the nation. They are averaging 15.8 attempts per game from behind the arc -- a sizable increase from last season, when they averaged only 10.6 attempts per game. Vanderbilt attempted a total of just 330 shots from long range in 2014-15, compared to 415 attempts the previous season and 472 in 2012-13.

WHAT'S TRENDING

Several players on the Vanderbilt roster have compiled strong numbers during the past few games. Here's a look at who's been hot for the Commodores:

- ♦ Sophomore guard Christa Reed, who is leading the SEC in 3-point accuracy at 44.0 percent, is shooting 47.8 percent from long range in the past 17 games, going 33-for-69. She has made at least one 3-pointer in 14 of VU's 18 games.
- ♦ Senior forward Rayte'a Long is shooting 71.4 percent (15-of-21) from the floor over the past 11 games and is shooting 67.5 percent for the season.
- ♦ Junior guard Minta Spears has compiled four or more assists in 12 of VU's 18 games, and has logged 30 minutes or more of playing time in 14 games.
- ♦ Redshirt sophomore guard Rebekah Dahlman matched her season high with 17 points in the loss to Tennessee on Thursday. She reached double figures in five of seven games (from Dec. 5 through Jan. 7) and averaged 11.9 points per game in that stretch.

HONORS & AWARDS

Here's a quick look at the honors that VU players have gained this season:

Rebekah Dahlman: Preseason All-SEC second-team selection
MVP of the Fordham Holiday Classic

Kendall Shaw: All-State Good Works team nominee

Marque's Webb: MVP of Vanderbilt Thanksgiving Tournament

Named to all-tournament team at Fordham Holiday Classic

GAME PREVIEW

TODAY'S MATCHUP: VANDERBILT (13-5, 2-3) VS. ALABAMA (13-6, 2-4)



SCOUTING THE TIDE

- Alabama ranks eighth in the SEC in scoring (71.1 points per game) and seventh in defense (allowing 57.7 ppg).
- The Tide is limiting its opponents to 35.1 percent shooting from the floor, which ranks 28th in the nation and fourth in the conference.
- Alabama is ranked 23rd in the nation and second in the SEC in blocked shots per game (5.3).
- The Tide's top scorer is Hannah Cook, who is averaging 13.2 points per game and is shooting 39.7 percent from 3-point range (48-of-121). Cook is averaging 6.0 rebounds per game, which ranks second on the team behind Nikki Hegstetter (7.3). Cook ranks 12th in the SEC in scoring (through Saturday night).
- Meoshonti Knight is also averaging in double figures at 10.1 ppg.
- Alabama is 11-1 at home this season (with the lone loss coming to Vanderbilt), but the Tide is 0-5 in road games.

SERIES HISTORY

- Today's game marks the 45th all-time meeting between the teams.
- Vanderbilt owns a 32-12 lead in the series, including winning the past three match-ups.
- The most recent game between the Commodores and Tide came two weeks ago, when VU posted a 54-48 win in Tuscaloosa on Jan. 10.
- Vanderbilt has dominated the series in recent years, winning 15 of the past 16 games and 19 of the past 21.
- The Commodores are 17-1 all-time against the Tide at Memorial Gym.
- Alabama posted its first-ever win on Vanderbilt's home floor during the Tide's most recent trip to Nashville during the 2013-14 season.
- Head coach Melanie Balcomb owns a 17-2 mark against Alabama since arriving at Vanderbilt, including a 7-1 record at Memorial Gym.
- Vanderbilt defeated Alabama twice last season, winning 55-52 in Tuscaloosa in late January and earning a 66-56 win in the first round of the SEC tournament.
- The series dates back to the 1977-78 season, VU's inaugural year of women's basketball.

HEAD COACH KRISTY CURRY

Kristy Curry is in her third season with Alabama, and has posted 40 wins with the Tide, bringing her career record to 349-190 in 16 seasons.

Home-game attendance increased significantly in Curry's first two seasons, as season ticket sales went up 53 percent since she took over at UA.

Prior to arriving at Alabama, Curry spent seven seasons at the helm of the Texas Tech Lady Raider basketball program, where she compiled a record of 130-98 (570). She guided the Lady Raiders to a 21-11 record in 2012-13 and an appearance in the NCAA Tournament for the second time in three years.

TEAM COMPARISONS

	VAN	BAMA
Points Per Game	65.3	71.1
Pts Allowed Per Game	51.4	57.7
FG Percentage	47.0	41.3
3-Point FG-FGA	105-286	103-355
3-Point Percentage	36.7	29.0
3-pointers Per Game	5.8	5.4
FT-FTA	211-301	291-409
FT Percentage	70.1	71.1
Rebounds per game	34.5	40.1
Rebound margin	+8.1	+1.5
Assists Per Game	14.8	12.1
Turnovers Per Game	16.2	16.3
Turnover Margin	+1.5	+4.7
RPI (as of 1/24/15)	55	125
Strength of Schedule (1/17/15)	90	269

Note: RPI and Strength of Schedule among the 349 D-I programs.

MOST RECENT MEETING:

Vanderbilt 54, Alabama 48 (Jan. 10, 2016)

Sophomore guard Christa Reed scored 15 of her game-high 17 points in the second half to help the Commodores slip past Alabama, 54-48, in Tuscaloosa, Ala., on Jan. 10, 2016.

Vanderbilt trailed 36-31 at the end of the third quarter but outscored the Tide 23-12 in the final 10 minutes to rally for the win.

Minta Spears finished with eight points, seven rebounds and four assists for Vanderbilt. Breanna Hayden paced Alabama with 10 points.

It was Vanderbilt's seventh consecutive win in Tuscaloosa -- a streak that dates back to the 2003-04 season -- and head coach Melanie Balcomb improved to 16-2 against the Tide during her tenure with the Commodores. Vanderbilt has now won 20 of the last 22 games against Alabama.

Trailing by five points, Vanderbilt opened the fourth quarter with a 9-0 run to move in front, 40-36, with 6:23 to play. Rachel Bell had a pair of baskets during the surge, and Jasmine Jenkins capped it with a 3-pointer from the corner. Vanderbilt maintained the lead the rest of the way by coming up with a series of clutch shots, including pivotal 3-pointers by Reed and Spears with just under four minutes to go.

Morgan Batey also contributed a big basket, knocking down a jumper from just beyond the foul line with 2:36 to play to give Vanderbilt a 48-44 lead. VU then secured the win by hitting 6-of-8 free throws in the final 1:04.

Vanderbilt earned the victory despite a rare cold-shooting performance. The Commodores, who are ranked among the Top-10 nationally in field-goal percentage, shot just 31 percent from the floor, making 15-of-47 shots.

Vanderbilt was 1-of-9 from 3-point range in the first half, but went 6-of-11 in the second half.

MOST RECENT GAME: VANDERBILT vs. ALABAMA

VANDERBILT 54, ALABAMA 48 (Jan. 10, 2016: Tuscaloosa, Ala.)

VANDERBILT 54 • 12-4, 1-2 SEC

##	Player		Total		3-Ptr	Rebounds			PF	TP	A	TO	Blk	Stl	Min
			FG-FGA	FG-FGA	FT-FTA	Off	Def	Tot							
44	Rayte'a Long	f	0-2	0-0	0-0	1	0	1	3	0	0	2	0	0	14
01	Rebekah Dahlman	g	1-4	0-2	0-0	0	2	2	2	2	0	2	0	1	28
03	Rachel Bell	g	3-11	1-5	1-1	1	3	4	1	8	0	4	1	2	25
23	Minta Spears	g	1-4	1-3	5-6	0	7	7	4	8	4	1	0	1	34
33	Christa Reed	g	5-12	4-9	3-6	4	2	6	2	17	4	1	0	0	35
15	Jasmine Jenkins		2-4	1-1	4-4	1	2	3	1	9	0	2	0	0	21
22	Marqu'es Webb		0-1	0-0	0-0	3	2	5	2	0	1	0	0	0	12
24	Kristen Gaffney		0-0	0-0	0-0	0	1	1	0	0	0	1	0	0	1
25	Morgan Batey		2-6	0-0	4-4	1	0	1	0	8	1	2	0	1	24
35	Kendall Shaw		1-3	0-0	0-0	0	1	1	2	2	0	0	0	0	6
Team						1	5	6							
Totals			15-47	7-20	17-21	12	25	37	17	54	10	15	1	5	200

FG % 1st Half: 5-23 21.7% 2nd half: 10-24 41.7% Game: 15-47 31.9%
 3FG % 1st Half: 1-9 11.1% 2nd half: 6-11 54.5% Game: 7-20 35.0%
 FT % 1st Half: 6-6 100.0 2nd half: 11-15 73.3% Game: 17-21 81.0%

Deadball
 Rebounds
 2

Alabama 48 • 12-4, 1-2 SEC

##	Player		Total		3-Ptr	Rebounds			PF	TP	A	TO	Blk	Stl	Min
			FG-FGA	FG-FGA	FT-FTA	Off	Def	Tot							
13	Hegstetter, Nikki	f	1-7	0-0	1-2	3	4	7	1	3	1	1	2	0	32
05	Hayden, Breanna	g	5-10	0-1	0-0	4	4	8	4	10	2	4	0	2	28
11	Cook, Hannah	g	2-4	1-2	2-2	1	2	3	4	7	0	2	0	1	31
15	Knight, Meoshonti	g	2-8	0-2	0-2	0	3	3	5	4	1	2	0	3	31
22	Middlebrook, Karyla	g	2-8	1-2	4-5	0	2	2	4	9	3	3	0	2	40
01	Bolton, Quanetria		4-8	1-3	0-0	2	1	3	1	9	0	0	0	1	16
02	Magee, Trista		0-2	0-2	0-0	0	1	1	0	0	0	0	0	0	4
03	Carter, Khadijah		0-0	0-0	0-0	0	1	1	0	0	0	0	0	0	1
23	Wade, Shaquera		2-5	2-4	0-2	1	2	3	2	6	2	2	0	0	17
Team						0	2	2							
Totals			18-52	5-16	7-13	11	22	33	21	48	9	14	2	9	200

FG % 1st Half: 7-28 25.0% 2nd half: 11-24 45.8% Game: 18-52 34.6%
 3FG % 1st Half: 2-11 18.2% 2nd half: 3-5 60.0% Game: 5-16 31.3%
 FT % 1st Half: 4-7 57.1% 2nd half: 3-6 50.0% Game: 7-13 53.8%

Deadball
 Rebounds
 4

Officials: Mark Zentz, Carla Fountain, Charlie Hust
 Technical fouls: VANDERBILT-None. Alabama-None.
 Attendance: 3023

Score by periods	1st	2nd	3rd	4th	Total
VANDERBILT	8	9	14	23	54
Alabama	9	11	16	12	48

VANDERBILT NEWS & NOTES

COMMODORE STAR STATS

A closer look at Vanderbilt's numbers

TEAM RANKINGS (Through Jan. 23)

- ★ Vanderbilt is shooting 47.0 percent from the floor, which ranks 10th in the nation and No. 1 in the SEC.
- ★ The Commodores rank seventh in the nation and first in the SEC in points allowed per game at 51.4.
- ★ Vanderbilt has limited opponents to 26.2 rebounds per game, which ranks first in the SEC.
- ★ The Commodores are shooting 37.1 percent from 3-point range, which ranks 18th in the nation and second in the SEC.
- ★ Vanderbilt's 69.2 field-goal percentage against Air Force is the second-best single-game mark in the NCAA this season and the best in the SEC.
- ★ Vanderbilt has won 455 games at Memorial Gym, the most all-time home wins of any team in the SEC.

INDIVIDUALLY (Through Jan. 23)

- ★ Christa Reed leads the SEC in 3-point accuracy at 44.0 percent.
- ★ Minta Spears ranks fifth in the SEC in assists (4.6 apg) and fourth in the SEC in minutes played (33.4 mpg).
- ★ Morgan Batey is tied for 14th in the SEC among active players in career rebounds with 477.
- ★ Spears' 14-assist performance against Austin Peay is tied for the most by an SEC player this season.

COACH BALCOMB (Through Jan. 23)

- ★ With her 468 career wins, Vanderbilt head coach Melanie Balcomb is the second-winningest coach in the SEC, trailing only Texas A&M's Gary Blair (709).
- ★ Balcomb has posted 305 wins at Vanderbilt and is the program's all-time wins leader.
- ★ Among active SEC coaches, she ranks No. 1 in conference victories. Also, no SEC coach has more wins at his/her current school than Balcomb.

SEC ACTIVE COACHING RECORDS

(Entering 2015-16)

	<u>RECORD</u>	<u>YEARS</u>
Melanie Balcomb (Vanderbilt)	115-79	13
Gary Blair (Texas A&M)	88-89	13*
Matthew Mitchell (Kentucky)	81-43	8
Dawn Staley (South Carolina)	67-43	7
Amanda Butler (Florida)	56-68	8
Holly Warlick (Tennessee)	42-6	3
Nikki Caldwell (LSU)	37-27	4
Vic Schaefer (Miss. State)	21-27	3
Robin Pingeton (Missouri)	19-29	3
Terri Williams-Fournoy (Auburn)	15-33	3
Matt Insell (Ole Miss)	9-23	2
Kristy Curry (Alabama)	9-23	2
Jimmy Dykes (Arkansas)	6-10	1
Joni Crenshaw (Georgia)	0-0	0

* Includes wins at TAMU and Arkansas

VU STARTING LINEUPS

Date	Opponent	Lineup (Combinations used)
Nov. 15	Miss. Valley St.	Jenkins, Webb, Spears, Batey, Reed (1)
Nov. 18	Dayton	Jenkins, Shaw, Spears, Batey, Reed (2)
Nov. 21	Green Bay	Jenkins, Dahlman, Spears, Batey, Reed (3)
Nov. 23	Presbyterian	Jenkins, Bell, Spears, Batey, Reed (4)
Nov. 27	Austin Peay	Jenkins, Bell, Long, Spears, Reed (5)
Nov. 28	Ohio	Jenkins, Bell, Long, Spears, Reed
Nov. 30	Air Force	Jenkins, Bell, Long, Spears, Reed
Dec. 3	Drexel	Jenkins, Bell, Long, Spears, Reed
Dec. 5	ETSU	Jenkins, Bell, Long, Spears, Reed
Dec. 10	Troy	Jenkins, Bell, Long, Spears, Reed
Dec. 21	UT-Martin	Jenkins, Bell, Long, Spears, Reed
Dec. 29	Nw Mexco St.	Jenkins, Bell, Long, Spears, Reed
Dec. 30	Fordham	Jenkins, Bell, Long, Spears, Reed
Jan. 3	Ole Miss	Jenkins, Bell, Long, Spears, Reed
Jan. 7	S. Carolina	Dahlman, Bell, Long, Spears, Reed (6)
Jan. 10	Alabama	Dahlman, Bell, Long, Spears, Reed
Jan. 14	LSU	Dahlman, Bell, Long, Spears, Reed
Jan. 21	Tennessee	Dahlman, Bell, Webb, Spears, Reed (7)
Jan. 25	Alabama	
Jan. 28	Kentucky	
Jan. 31	Georgia	
Feb. 4	Auburn	
Feb. 8	Arkansas	
Feb. 11	Tennessee	
Feb. 14	Kentucky	
Feb. 18	Florida	
Feb. 21	Texas A&M	
Feb. 25	Miss. State	
Feb. 28	Missouri	

EARLEY NAMED TO 2016 SEC LEGEND'S CLASS

Former Vanderbilt star and current Commodore assistant coach Ashley Earley has been selected as part of the SEC's 2016 Class of Women's Legends. Each year, a new class is selected as a way of showcasing former student-athletes, coaches and administrators from all 14 SEC member institutions.

Earley -- who starred at VU from 2001-05 -- and the other members of this year's class will be honored at the 2016 SEC Women's Basketball Tournament, March 2-6 in Jacksonville, Fla. Each legend will be honored during half-time of their teams first game of the tournament. All 14 individuals will also be honored as a group.

Earley joined head coach Melanie Balcomb's staff as an assistant coach in the summer of 2013, and works primarily with the VU post players while also contributing significantly to recruiting.

During her playing career, she helped lead her teams to the Elite Eight in 2002, the Sweet 16 in 2004 and 2005 and SEC Tournament Championships in 2002 and 2004.

As a senior, she was a unanimous first-team All-SEC selection, Kodak All-Region, Associated Press honorable mention All-American and Full Court Press second-team All-American. She led the SEC in field goal percentage and offensive rebounds and was a candidate for both the Naismith Trophy and Wooden Award. She capped her career with 1,382 points, which ranks 20th in program history.

After being drafted by the WNBA's Indiana Fever, Earley played professionally for the Maccabi Tel Kabir in the Salsal Israeli League. A native of Memphis, Tenn., Earley was an outstanding prep player who was the 2001 Gatorade Tennessee Player of the Year.



2015-16 SEC Women's Basketball

Tammy Wilson, Director of Communications

twilson@sec.org • Twitter: SEC_Tammy

January 18, 2016

Standings

	SEC				Overall							
	W-L	Pct.	H	A	W-L	Pct.	H	A	N	LS	Strk	
South Carolina	5-0	1.000	3-0	2-0	17-0	1.000	9-0	5-0	3-0	5-0	W17	
Mississippi State	4-1	.800	3-0	1-1	17-2	.894	11-0	2-2	4-0	4-1	W1	
Texas A&M	3-2	.600	2-0	1-2	13-5	.722	8-1	2-2	3-2	3-2	L1	
Arkansas	3-2	.600	3-0	0-2	8-10	.444	8-2	0-5	0-3	3-2	W2	
Florida	3-2	.600	1-2	2-0	15-3	.833	8-2	5-1	2-0	3-2	W1	
Kentucky	3-2	.600	2-1	1-1	14-2	.875	10-1	4-1	0-0	3-2	W1	
Tennessee	2-2	.500	1-1	1-1	11-6	.647	8-3	3-3	0-0	2-3	L2	
Vanderbilt	2-2	.500	1-1	1-1	13-4	.764	9-1	3-3	1-0	3-2	W2	
Alabama	2-3	.400	2-1	0-2	13-5	.722	11-1	0-4	2-0	2-3	W1	
Auburn	2-3	.400	2-0	0-3	12-6	.667	6-1	3-5	3-0	2-3	L1	
Missouri	2-3	.400	1-1	1-2	15-3	.833	9-1	5-2	1-0	2-3	L1	
Georgia	1-4	.200	0-2	1-2	13-5	.722	9-2	3-3	1-0	1-4	L1	
LSU	1-4	.200	1-1	0-3	7-11	.389	5-2	1-7	1-2	1-4	L3	
Ole Miss	1-4	.200	1-1	0-3	9-9	.500	7-4	2-5	0-0	3-2	L4	

Schedule & Results

14 (Thursday)

*Alabama at Auburn (SEC+)	AJ 72-59
*#13/15 Tennessee at Arkansas (SEC Network)	AR 64-59
*Georgia at #20/21 Florida (SEC+)	UG 71-61
*#2/2 South Carolina at #9/9 Kentucky (SEC Network)	SC 73-62
*LSU at Vanderbilt (SEC+)	VU 58-42
*Ole Miss at #15/11 Texas A&M (SEC+)	AM 81-58
*#7/6 Mississippi State at #24 Missouri (SEC+)	MO 66-54

17 (Sunday)

*Georgia at Alabama (SEC Network)	UA 64-50
*#24 Missouri at Arkansas (SEC Network)	AR 64-52
*Auburn at #9/9 Kentucky (SEC Network)	UK 54-47
*LSU at #20/21 Florida (SEC+)	UF 58-45
*#15/11 Texas A&M at #2/2 South Carolina (ESPN2)	SC 59-58

18 (Monday)

*Ole Miss at #7/6 Mississippi State (SEC Network)	MS 79-51
*#13/15 Tennessee at #3/3 Notre Dame (ESPN2)	LD 66-79

*SEC Game.

News & Notes

• The SEC Women's Basketball Player of the Week for games Jan. 5 - 11 is Florid's **CARLE NEEDLES**. The Freshman of the Week for that period is her Gator teammate **ELEANORA CHRISTIAN**. It's the second honor for Christian this season. The first time since 2013 a team has won weekly honors in women's hoops. See page 7 for full information on weekly honors.

• In the Associated Press poll, the SEC has **SEVEN** teams ranked, including three in the **Top 10**. It's the most teams ranked in the league since the week of Dec. 1 in the 2014-15 season. The SEC is responsible for 72 of the 384 instances where a conference had at least 7 teams ranked in the AP poll. There have been 38 weeks where a conference had 8 teams ranked with nine of the 10 being the SEC. In the coaches' poll, 5 SEC teams are currently ranked. Two additional SEC schools are receiving votes in the coaches poll. See page 5 for full poll information.

• In the most recent RPI as announced by the NCAA, **EIGHT** SEC teams are in the **Top 50** with **THREE** in the **Top 10**. Complete RPI for league teams can be found on page 7.

• In the John R. Wooden Award Women's Midseason Top 20, the SEC is boasting **FOUR** selections, the most of any conference. The nominees include: Mississippi State's Victoria Vivians; South Carolina's Tiffany Mitchell; and A'ja Wilson; and Tennessee's Diamond DeShields.

• In the 2016 Naismith Trophy Women's College Player of the Year Early Season Watch list includes **NINE** SEC players: Kentucky's Malorya Epps; Mississippi State's Victoria Vivians; South Carolina's Abina Dantes; Tiffany Mitchell; and A'ja Wilson; Tennessee's Diamond DeShields and Barbara Grav; Texas A&M's Courtney Walker and Courtney Williams.

• The Ann Meyers Drysdale Award Watch list includes **FIVE** SEC student-athletes: Victoria Vivians, Mississippi State; Tiffany Mitchell, South Carolina; A'ja Wilson, South Carolina; Diamond DeShields, Tennessee; Courtney Williams, Texas A&M.

• The Allstate WBCA Good Works Team nominees include **EIGHT** SEC players: Nil Hegstetter, Alabama; Melissa Wolfe, Arkansas; Merritt Henpe, Georgia; Dinae Orie, Mississippi State; Dondra Session, South Carolina; Andraya Carter, Tennessee; Jordan Jones, Texas A&M and Kendall Shaw, Vanderbilt.

COMMODORE CAREER HIGHS

MORGAN BATEY

Points:	18	vs. Miss. State (1/11/15)
3FG Made:	2 (2x)	vs. Dayton (11/18/15)
Rebounds:	16	vs. Elon (12/14/14)
Assists:	6 (2x)	vs. Troy (12/10/15)
Blocks:	1 (5x)	vs. Miss. Valley State (11/15/15)
Steals:	5	vs. Alabama-Huntsville (12/03/15)
Minutes:	43	vs. Florida (2/19/15)

RAYTE'A LONG

Points:	10	vs. Green Bay (11/21/15)
3FG Made:	0	N/A
Rebounds:	9 (3x)	vs. Presbyterian(11/23/15)
Assists:	3	vs. Air Force (11/30/15)
Blocks:	1 (6x)	vs. Troy (12/10/15)
Steals:	3	vs. Belmont (11/14/14)
Minutes:	21	vs. ETSU (12/9/15)

RACHEL BELL

Points:	24	vs. Drexel (12/3/15)
3FG Made:	4 (3x)	vs. Drexel (12/3/15)
Rebounds:	6 (3x)	last, vs. Kentucky (2/7/15)
Assists:	5 (4x)	last, vs. ETSU (12/10/15)
Blocks:	1 (5x)	last, vs. Ole Miss (12/10/15)
Steals:	3	at Tennessee (3/1/15)
Minutes:	36	vs. Dayton (12/21/14)

CHRISTA REED

Points:	22	vs. Miss. Valley State (11/15/15)
3FG Made:	5	vs. Troy (12/10/15)
Rebounds:	8	vs. Troy (12/10/15)
Assists:	4	vs. Air Force (11/30/15)
Blocks:	1 (4x)	vs. UT Martin (12/10/15)
Steals:	3 (2x)	vs. Troy (12/10/15)
Minutes:	37	vs. UT Martin (12/10/15)

REBEKAH DAHLMAN

Points:	23	vs. Appalachian State (11/8/13)
3-pointers:	6	vs. Appalachian State (11/8/13)
Rebounds:	8	last vs. Wisconsin (11/30/13)
Assists:	3 (3x)	vs. UT Martin (12/10/15)
Blocks:	1	vs. Appalachian State (11/8/13)
Steals:	3	at #2/2 Duke (11/21/13)
Minutes:	34	vs. Dayton (11/24/13)

MIAYA SEAWRIGHT

Points:	2	vs. Troy
3FG Made:	--	N/A
Rebounds:	1	vs. Miss. Valley State (11/15/15)
Assists:	1	vs. Miss. Valley State (11/15/15)
Blocks:	--	N/A
Steals:	1	vs. Air Force (11/30/15)
Minutes:	--	N/A

MYKA DANCY

Points:	--	N/A
3FG Made:	--	N/A
Rebounds:	1	vs. ETSU (12/10/15)
Assists:	--	N/A
Blocks:	--	N/A
Steals:	--	N/A
Minutes:	5	vs. Miss. Valley State (11/15/15)

KENDALL SHAW

Points:	12	last at Connecticut (3/25/13)
3FG Made:	1	at Marquette (12/18/14)
Rebounds:	10	vs. Miss. Valley State (11/15/15)
Assists:	2	vs. #7/7 Kentucky (3/8/13)
Blocks:	4	vs. McNeese State (11/10/12)
Steals:	1 (3x)	vs. Presbyterian(11/23/15)
Minutes:	20	at #3/3 Connecticut (3/25/13)

KRISTEN GAFFNEY

Points:	15	vs. Arizona State (11/30/14)
3FG Made:	2	vs. Air Force (11/30/15)
Rebounds:	10	vs. Miss. Valley St. (12/03/14)
Assists:	7	vs. New Mexico State (12/29/15)
Blocks:	2	vs. Arkansas (1/22/15)
Steals:	6	vs. New Mexico State (12/29/15)
Minutes:	33	vs. Marquette (12/18/14)

MINTA SPEARS (At Vanderbilt)

Points:	11 (2x)	vs. Fordham (12/10/15)
3FG Made:	3	vs. Fordham (12/10/15)
Rebounds:	4 (2x)	vs. Fordham (12/10/15)
Assists:	14	vs. Austin Peay (11/27/15)
Blocks:	1 (2x)	vs. UT Martin (12/10/15)
Steals:	5	vs. Troy (12/10/15)
Minutes:	40 (2x)	vs. Ole Miss (12/10/15)

JASMINE JENKINS

Points:	24	vs. Miss. Valley State (11/15/15)
3-pointers:	2 (2x)	vs. Miss. Valley State (11/15/15)
Rebounds:	7 (3x)	vs. Presbyterian(11/23/15)
Assists:	7 (2x)	vs. Troy (12/10/15)
Blocks:	2	vs. Coll. of Charleston (12/22/12)
Steals:	4	vs. Florida (2/19/15)
Minutes:	42	vs. Florida (2/19/15)

MARQU'ES WEBB

Points:	19	vs. Ohio (11/30/15)
3FG Made:	0	N/A
Rebounds:	13	vs. Tennessee (1/21/16)
Assists:	3 (4x)	last vs. St. Louis (11/24/14)
Blocks:	3	vs. Miss. Valley State (11/15/15)
Steals:	2 (5x)	vs. Air Force (12/10/15)
Minutes:	33	vs. Green Bay (11/17/14)

MOST RECENT GAME: TENNESSEE 58, VANDERBILT 49

Jan. 21, 2016 • Thompson Boling Arena • Knoxville, Tenn.

Commodores' late comeback falls just short

Despite big night from Dahlman, Vanderbilt is denied first-ever win in Knoxville

By David Dawson
vucommodores.com

KNOXVILLE, Tenn. -- In order to record their first-ever win in Knoxville, the Vanderbilt women knew they would need to execute on both ends of the floor Thursday night.

The Commodores, it turned out, were only able to produce half of that formula.

Vanderbilt's defense, which is ranked among the best in the nation, delivered another gritty performance, but the Commodores struggled on offense for much of the night during a 58-49 loss to No. 18/22 Tennessee.

Rebekah Dahlman finished with a game-high 17 points for Vanderbilt (13-5, 2-3), and Marquès Webb pulled down a career-high 13 rebounds. Te'a Cooper led Tennessee with 13 points, including scoring nine straight points for the Lady Vols (12-6, 3-2) in the third quarter.

Vanderbilt was looking to end its 30-game losing streak on the Lady Vols' home floor -- and the Commodores appeared to have a golden chance to do it.

After staging a big fourth-quarter comeback, Vanderbilt trailed by three points in the final minute. But the Commodores came up empty on back-to-back possessions -- turning the ball over each time -- and the Lady Vols made six straight free throws in the final 15 seconds to escape with the win.

"I am really proud of the way we kept fighting tonight," said Vanderbilt head coach Melanie Balcomb. "We had two possessions to put ourselves in position to win the game, and even though we didn't execute, that's really all you can ask for on the road."



Rebekah Dahlman paced Vanderbilt with 17 points in Thursday's loss.

The loss snapped VU's two-game winning streak, while the Lady Vols snapped a two-game skid.

Vanderbilt came into the night ranked 10th in the nation in field-goal percentage at 47.5 percent, but shot just 37 percent in the loss. The Commodores also committed 23 turnovers -- eight more than their season average.

But VU's defense made sure the game never got away. The Commodores limited Tennessee to 40 percent shooting from the floor, and Vanderbilt -- which entered the night ranked sixth in the nation in points allowed per game (51.1) -- also won the rebounding battle, 36-29.

"We're improving all the time," said Balcomb. "Their press effected us early in the game, and we started playing too fast. But we settled down and fought back."

Tennessee, which carried a 28-25 lead into the half, appeared to be pulling away in the third quarter, when Cooper's hot shooting helped the Lady Vols outscore Vanderbilt 16-7 and build a 44-32.

The Lady Vols extended the lead to 47-34 early in the fourth quarter, but Vanderbilt didn't go away.

Fueled by a series of big shots by Dahlman, the Commodores put together a 15-5 run to pull within 52-49 with 1:42 to play. Dahlman scored seven points during the run -- including making her third 3 of the game -- and Webb eventually capped the surge with a basket in the paint with 1:42 to go.

The Commodores then had two chances to tie the game, but came up empty both times. Jasmine Jenkins was called for traveling with 57 seconds remaining, and Dahlman stepped on the sideline on Vanderbilt's next possession with 16 seconds left.

Tennessee's Andraya Carter converted two free throws to extend UT's lead to five points with 15 seconds left, and the Lady Vols held on from there to remain perfect against Vanderbilt on their home floor.

MOST RECENT GAME: TENNESSEE 58, VANDERBILT 49

Jan. 21, 2016 • Thompson Boling Arena • Knoxville, Tenn.

VANDERBILT 49 • 13-5, 2-3

#	Player		Total	3-Ptr	Rebounds			PF	TP	A	TO	Blk	Stl	Min
			FG-FGA	FG-FGA	FT-FTA	Off	Def	Tot						
22	Marqu'es Webb	f	1-4	0-0	1-3	5	8	13	5	3	0	2	1	27
01	Rebekah Dahlman	g	5-9	3-5	4-4	0	4	4	3	17	0	5	0	36
03	Rachel Bell	g	4-6	0-1	0-0	1	1	2	0	8	0	2	0	19
23	Minta Spears	g	0-3	0-0	2-2	0	1	1	3	2	5	2	0	35
33	Christa Reed	g	1-5	0-3	1-2	1	1	2	2	3	0	2	0	21
15	Jasmine Jenkins		2-8	0-2	3-4	0	1	1	2	7	1	4	0	20
24	Kristen Gaffney		0-0	0-0	0-0	0	0	0	0	0	0	0	0	4
25	Morgan Batey		4-9	0-0	1-2	1	3	4	4	9	1	4	0	30
35	Kendall Shaw		0-1	0-0	0-0	0	0	0	0	0	0	0	0	4
44	Rayte'a Long		0-1	0-0	0-0	3	0	3	0	0	1	0	0	4
Team						3	3	6			2			
Totals			17-46	3-11	12-17	14	22	36	19	49	8	23	1	200

FG % 1st Half: 10-24 41.7% 2nd half: 7-22 31.8% Game: 17-46 37.0%
 3FG % 1st Half: 2-4 50.0% 2nd half: 1-7 14.3% Game: 3-11 27.3%
 FT % 1st Half: 3-4 75.0% 2nd half: 9-13 69.2% Game: 12-17 70.6%

Deadball
Rebounds
3

Tennessee 58 • 12-6, 3-2

#	Player		Total	3-Ptr	Rebounds			PF	TP	A	TO	Blk	Stl	Min
			FG-FGA	FG-FGA	FT-FTA	Off	Def	Tot						
12	Graves, Bashaara	f	2-4	0-0	2-2	2	4	6	2	6	4	0	1	33
31	Nared, Jaime	f	3-8	0-1	1-3	3	1	4	0	7	0	1	0	23
21	Russell, Mercedes	c	3-5	0-0	2-4	2	3	5	4	8	1	2	1	20
11	DeShields, Diamond	g	4-12	1-4	2-2	1	1	2	4	11	4	4	3	28
14	Carter, Andraya	g	3-7	0-2	2-2	1	1	2	3	8	3	0	0	30
00	Reynolds, Jordan		1-2	0-0	1-2	1	1	2	1	3	2	2	0	20
01	Moore, Nia		0-3	0-0	2-2	1	2	3	3	2	0	1	0	11
20	Cooper, Te'a		6-12	1-1	0-0	0	1	1	2	13	1	3	0	24
33	Middleton, Alexa		0-1	0-0	0-0	1	1	2	1	0	0	2	0	11
Team						0	2	2						
Totals			22-54	2-8	12-17	12	17	29	20	58	15	15	5	200

FG % 1st Half: 13-32 40.6% 2nd half: 9-22 40.9% Game: 22-54 40.7%
 3FG % 1st Half: 1-4 25.0% 2nd half: 1-4 25.0% Game: 2-8 25.0%
 FT % 1st Half: 1-1 100.0 2nd half: 11-16 68.8% Game: 12-17 70.6%

Deadball
Rebounds
3

Officials: Sue Blauch, Carla Fountain, Kevin Pethtel
 Technical fouls: VANDERBILT-Marqu'es Webb. Tennessee-None.
 Attendance: 11159

Score by periods	1st	2nd	3rd	4th	Total
VANDERBILT	10	15	7	17	49
Tennessee	17	11	16	14	58

VANDERBILT RESULTS



2015-16 Vanderbilt Basketball VANDERBILT Season Schedule/Results & Leaders (as of Jan 24, 2016) All games



RECORD:	OVERALL	HOME	AWAY	NEUTRAL
ALL GAMES	13-5	9-1	3-4	1-0
CONFERENCE	2-3	1-1	1-2	0-0
NON-CONFERENCE	11-2	8-0	2-2	1-0

Date	Opponent	Score	Att.	High Points	High Rebounds
11/15/15	MISS. VALLEY STATE	W 89-39	2264	(24)Jasmine Jenkins	(10)Kendall Shaw
11/18/15	at Dayton	56-81 L	1637	(16)Jasmine Jenkins	(5)Jasmine Jenkins
11/21/15	at Green Bay	56-58 L	2351	(13)Rachel Bell	(9)Rayte'a Long
11/23/15	PRESBYTERIAN	W 56-38	5351	(12)Christa Reed	(9)Rayte'a Long
11/27/15	AUSTIN PEAY	W 73-56	2447	(17)Rebekah Dahlman	(7)Marqu'es Webb
					(7)Kristen Gaffney
11/28/15	OHIO	W 62-59	2462	(19)Marqu'es Webb	(10)Marqu'es Webb
11/30/15	AIR FORCE	W 86-29	2213	(20)Rachel Bell	(5)Marqu'es Webb
12/3/15	at DREXEL	W 74-64	539	(24)Rachel Bell	(5)Kristen Gaffney
12/05/15	ETSU	W 65-39	2264	(16)Rachel Bell	(6)Kristen Gaffney
12/10/15	TROY	W 97-43	2528	(19)Christa Reed	(8)Christa Reed
12/21/15	UT MARTIN	W 64-61	2574	(20)Christa Reed	(7)Rayte'a Long
12/29/15	^vs New Mexico State	W 71-45	832	(17)Marqu'es Webb	(10)Morgan Batey
12/30/15	^at Fordham	W 53-40	622	(11)Minta Spears	(6)Rayte'a Long
1/3/16	*at Ole Miss	52-55 L	1283	(16)Christa Reed	(8)Marqu'es Webb
01/07/16	*SOUTH CAROLINA	61-71 L	2547	(14)Rebekah Dahlman	(6)Rebekah Dahlman
01/10/16	*at Alabama	W 54-48	3023	(17)Christa Reed	(7)Minta Spears
01/14/16	*LSU	W 58-42	2332	(15)Christa Reed	(4)Minta Spears
					(4)Jasmine Jenkins
					(4)Morgan Batey
01/21/16	*at Tennessee	49-58 L	11159	(17)Rebekah Dahlman	(13)Marqu'es Webb

* - Conference game

Attendance Summary	Games	Attend	Avg/Game
Home	10	26982	2698
Away	7	20614	2945
Neutral	1	832	832
Total	18	48428	2690

VANDERBILT GAME-BY-GAME STATS



2015-16 Vanderbilt Basketball VANDERBILT Team Game-by-Game (as of Jan 24, 2016) All games



TEAM STATISTICS

Opponent	Date	Score		Total		3-Pointers		Free throws		Rebounds				pf	a	t/o	blk	stl	pts	avg
				fg-fga	pct	3fg-fga	pct	ft-fa	pct	off	def	tot	avg							
MISS. VALLEY STATE	11/15/15	89-39	W	32-59	.542	7-16	.438	18-26	.692	12	32	44	44.0	11	20	13	7	13	89	89.0
at Dayton	11/18/15	56-81	L	19-60	.317	5-20	.250	13-20	.650	12	21	33	38.5	30	11	13	0	2	56	72.5
at Green Bay	11/21/15	56-58	L	19-42	.452	5-17	.294	13-16	.813	12	24	36	37.7	17	10	25	1	5	56	67.0
PRESBYTERIAN	11/23/15	56-38	W	19-57	.333	5-17	.294	13-19	.684	23	15	38	37.8	11	15	10	2	6	56	64.2
AUSTIN PEAY	11/27/15	73-56	W	31-54	.574	6-15	.400	5-6	.833	8	26	34	37.0	15	20	15	1	6	73	66.0
OHIO	11/28/15	62-59	W	20-51	.392	6-14	.429	16-17	.941	18	20	38	37.2	19	9	16	0	6	62	65.3
AIR FORCE	11/30/15	86-29	W	36-52	.692	7-10	.700	7-11	.636	9	17	26	35.6	14	19	15	2	15	86	68.3
at DREXEL	12/3/15	74-64	W	28-48	.583	7-15	.467	11-20	.550	9	19	28	34.6	13	19	12	2	10	74	69.0
ETSU	12/05/15	65-39	W	23-49	.469	7-16	.438	12-16	.750	10	22	32	34.3	13	15	16	0	14	65	68.6
TROY	12/10/15	97-43	W	37-65	.569	8-18	.444	15-22	.682	15	33	48	35.7	14	27	17	4	14	97	71.4
UT MARTIN	12/21/15	64-61	W	22-48	.458	6-17	.353	14-21	.667	7	24	31	35.3	21	10	17	2	8	64	70.7
vs New Mexico State	12/29/15	71-45	W	30-49	.612	6-16	.375	5-16	.313	10	30	40	35.7	18	23	19	0	11	71	70.8
at Fordham	12/30/15	53-40	W	18-42	.429	6-13	.462	11-13	.846	12	21	33	35.5	18	8	18	1	5	53	69.4
at Ole Miss	1/3/16	52-55	L	18-45	.400	3-13	.231	13-18	.722	10	23	33	35.3	16	16	26	1	6	52	68.1
SOUTH CAROLINA	01/07/16	61-71	L	22-53	.415	4-20	.200	13-15	.867	9	20	29	34.9	19	12	13	1	5	61	67.7
at Alabama	01/10/16	54-48	W	15-47	.319	7-20	.350	17-21	.810	12	25	37	35.0	17	10	15	1	5	54	66.8
LSU	01/14/16	58-42	W	24-48	.500	7-18	.389	3-7	.429	6	19	25	34.4	13	14	9	4	10	58	66.3
at Tennessee	01/21/16	49-58	L	17-46	.370	3-11	.273	12-17	.706	14	22	36	34.5	19	8	23	1	5	49	65.3
VANDERBILT		1176		430-915	.470	105-286	.367	211-301	.701	208	413	621	34.5	298	266	292	30	146	1176	65.3
Opponents		926		326-875	.373	108-315	.343	166-251	.661	168	307	475	26.4	347	191	319	50	128	926	51.4

Games played: 18
Points/game: 65.3
FG Pct: 47.0
3FG Pct: 36.7
FT Pct: 70.1

Rebounds/game: 34.5
Assists/game: 14.8
Turnovers/game: 16.2
Assist/turnover ratio: 0.9
Steals/game: 8.1
Blocks/game: 1.7

GAME-BY-GAME STATS COMPARISON



2015-16 Vanderbilt Basketball VANDERBILT Team Game-by-Game Comparison (as of Jan 24, 2016) All games



Opponent	1st	2nd	Score	Mar	Total FG	FG Pct	3-Pointers	3FG Pct	Free Throws	FT Pct	Rebounds	Assist	T/Over	Block	Steal	Fouls
MISS. VALLEY STATE	44/8	45/31	89-39	+50	32-59/13-54	.542/.241	7-16/6-17	.438/.353	18-26/7-11	.692/.636	44/31 +13	20/7	13/25	7/2	13/6	11/18
Dayton	21/39	35/42	56-81	(25)	19-60/27-55	.317/.491	5-20/9-23	.250/.391	13-20/18-30	.650/.600	33/45 (12)	11/16	13/17	0/4	2/8	30/25
Green Bay	31/28	25/30	56-58	(2)	19-42/18-50	.452/.360	5-17/7-24	.294/.292	13-16/15-18	.813/.833	36/19 +17	10/12	25/12	1/0	5/9	17/18
PRESBYTERIAN	30/22	26/16	56-38	+18	19-57/10-30	.333/.333	5-17/5-15	.294/.333	13-19/13-14	.684/.929	38/21 +17	15/8	10/19	2/6	6/6	11/22
AUSTIN PEAY	31/19	42/37	73-56	+17	31-54/21-49	.574/.429	6-15/9-22	.400/.409	5-6/5-8	.833/.625	34/19 +15	20/13	15/17	1/5	6/5	15/18
OHIO	33/27	29/32	62-59	+3	20-51/19-46	.392/.413	6-14/8-24	.429/.333	16-17/13-23	.941/.565	38/22 +16	9/6	16/13	0/3	6/2	19/15
AIR FORCE	37/11	49/18	86-29	+57	36-52/13-36	.692/.361	7-10/2-8	.700/.250	7-11/1-4	.636/.250	26/15 +11	19/9	15/30	2/1	15/6	14/18
DREXEL	30/20	44/44	74-64	+10	28-48/23-48	.583/.479	7-15/11-22	.467/.500	11-20/7-11	.550/.636	28/23 +5	19/15	12/15	2/1	10/4	13/19
ETSU	25/15	40/24	65-39	+26	23-49/15-44	.469/.341	7-16/7-19	.438/.368	12-16/2-4	.750/.500	32/23 +9	15/10	16/22	0/3	14/8	13/18
TROY	46/17	51/26	97-43	+54	37-65/14-64	.569/.219	8-18/5-20	.444/.250	15-22/10-12	.682/.833	48/31 +17	27/6	17/25	4/3	14/8	14/24
UT MARTIN	35/34	29/27	64-61	+3	22-48/19-48	.458/.396	6-17/8-22	.353/.364	14-21/15-18	.667/.833	31/29 +2	10/11	17/15	2/2	8/11	21/23
New Mexico State	29/21	42/24	71-45	+26	30-49/17-49	.612/.347	6-16/7-22	.375/.318	5-16/4-8	.313/.500	40/19 +21	23/10	19/17	0/3	11/10	18/18
Fordham	27/14	26/26	53-40	+13	18-42/15-46	.429/.326	6-13/4-17	.462/.235	11-13/6-7	.846/.857	33/22 +11	8/10	18/16	1/4	5/4	18/19
Ole Miss	29/20	23/35	52-55	(3)	18-45/20-49	.400/.408	3-13/2-12	.231/.167	13-18/13-17	.722/.765	33/26 +7	16/7	26/20	1/4	6/11	16/22
SOUTH CAROLINA	31/31	30/40	61-71	(10)	22-53/25-50	.415/.500	4-20/10-22	.200/.455	13-15/11-23	.867/.478	29/30 (1)	12/15	13/11	1/0	5/7	19/18
Alabama	17/20	37/28	54-48	+6	15-47/18-52	.319/.346	7-20/5-16	.350/.313	17-21/7-13	.810/.538	37/33 +4	10/9	15/14	1/2	5/9	17/21
LSU	27/20	31/22	58-42	+16	24-48/17-51	.500/.333	7-18/1-2	.389/.500	3-7/7-13	.429/.538	25/38 (13)	14/12	9/16	4/2	10/6	13/11
Tennessee	25/28	24/30	49-58	(9)	17-46/22-54	.370/.407	3-11/2-8	.273/.250	12-17/12-17	.706/.706	36/29 +7	8/15	23/15	1/5	5/8	19/20

VANDERBILT'S LAST FIVE GAMES



2015-16 Vanderbilt Basketball VANDERBILT Combined Team Statistics (as of Jan 24, 2016) last 5 games



RECORD:	OVERALL	HOME	AWAY	NEUTRAL
ALL GAMES	2-3	1-1	1-2	0-0
CONFERENCE	2-3	1-1	1-2	0-0
NON-CONFERENCE	0-0	0-0	0-0	0-0

#	Player	gp-gs	min	avg	Total		3-Point		F-Throw		Rebounds				pf	dq	a	to	blk	stl	pts	avg
					fg-fga	fg%	3fg-fga	3fg%	ft-fga	ft%	off	def	tot	avg								
33	Christa Reed	5-5	142	28.4	20-45	.444	11-25	.440	6-11	.545	6	8	14	2.8	12	0	7	11	0	3	57	11.4
01	Rebekah Dahlman	5-4	139	27.8	14-34	.412	6-21	.286	12-12	1.000	3	14	17	3.4	11	0	7	11	0	7	46	9.2
25	Morgan Batey	5-0	106	21.2	14-27	.519	0-0	.000	7-8	.875	3	11	14	2.8	6	0	6	9	0	4	35	7.0
03	Rachel Bell	5-5	118	23.6	13-40	.325	3-15	.200	4-5	.800	4	9	13	2.6	3	0	3	9	2	2	33	6.6
23	Minta Spears	5-5	188	37.6	8-28	.286	3-15	.200	14-16	.875	0	15	15	3.0	13	0	21	11	1	5	33	6.6
15	Jasmine Jenkins	5-1	94	18.8	8-24	.333	1-3	.333	9-10	.900	4	13	17	3.4	6	0	9	12	0	3	26	5.2
22	Marqu'es Webb	5-1	91	18.2	7-15	.467	0-0	.000	3-12	.250	12	20	32	6.4	19	2	2	10	3	4	17	3.4
35	Kendall Shaw	4-0	27	6.8	5-10	.500	0-0	.000	3-4	.750	2	2	4	1.0	4	0	0	0	2	0	13	3.3
44	Rayte'a Long	5-4	59	11.8	6-10	.600	0-1	.000	0-0	.000	9	3	12	2.4	10	0	2	6	0	2	12	2.4
24	Kristen Gaffney	4-0	36	9.0	1-6	.167	0-2	.000	0-0	.000	1	5	6	1.5	0	0	3	4	0	1	2	0.5
Team											7	9	16					3				
Total.....		5	1000		96-239	.402	24-82	.293	58-78	.744	51	109	160	32.0	84	2	60	86	8	31	274	54.8
Opponents.....		5	1000		102-256	.398	20-60	.333	50-83	.602	57	99	156	31.2	92	-	58	76	13	41	274	54.8

VANDERBILT GAME-BY-GAME HIGHS



2015-16 Vanderbilt Basketball VANDERBILT Game-by-Game Highs (as of Jan 24, 2016) All games



Opponent	Date	Score	Points	Rebounds	Assists	Steals	Blocked shots
MISS. VALLEY STATE	11/15/15	89-39	24-Jasmine Jenkins	10-Kendall Shaw	7-Minta Spears	3-Kristen Gaffney Christa Reed	3-Marqu'es Webb
at Dayton	11/18/15	56-81	16-Jasmine Jenkins	5-Jasmine Jenkins	4-Minta Spears	1-Christa Reed Morgan Batey	None
at Green Bay	11/21/15	56-58	13-Rachel Bell	9-Rayte'a Long	3-Minta Spears Jasmine Jenkins	2-Rachel Bell Jasmine Jenkins	1-Marqu'es Webb
PRESBYTERIAN	11/23/15	56-38	12-Christa Reed	9-Rayte'a Long	4-Jasmine Jenkins Minta Spears	2-Rachel Bell	1-Christa Reed Kendall Shaw
AUSTIN PEAY	11/27/15	73-56	17-Rebekah Dahlman	7-Kristen Gaffney Marqu'es Webb	14-Minta Spears	2-Morgan Batey Rebekah Dahlman	1-Rachel Bell
OHIO	11/28/15	62-59	19-Marqu'es Webb	10-Marqu'es Webb	3-Christa Reed Kristen Gaffney	1-Morgan Batey Kristen Gaffney Christa Reed Jasmine Jenkins Rebekah Dahlman Rachel Bell	None
AIR FORCE	11/30/15	86-29	20-Rachel Bell	5-Marqu'es Webb	4-Christa Reed	4-Morgan Batey	1-Kristen Gaffney Kendall Shaw
at DREXEL	12/3/15	74-64	24-Rachel Bell	5-Kristen Gaffney	6-Minta Spears	3-Jasmine Jenkins Kristen Gaffney	1-Rayte'a Long Kristen Gaffney
ETSU	12/05/15	65-39	16-Rachel Bell	6-Kristen Gaffney	5-Minta Spears	4-Minta Spears	None
TROY	12/10/15	97-43	19-Christa Reed	8-Christa Reed	7-Jasmine Jenkins Minta Spears	5-Minta Spears	1-Kristen Gaffney Minta Spears Kendall Shaw Christa Reed
UT MARTIN	12/21/15	64-61	20-Christa Reed	7-Rayte'a Long	3-Rebekah Dahlman Minta Spears	3-Morgan Batey	1-Minta Spears Christa Reed
vs New Mexico State	12/29/15	71-45	17-Marqu'es Webb	10-Morgan Batey	7-Kristen Gaffney Minta Spears	6-Kristen Gaffney	None
at Fordham	12/30/15	53-40	11-Minta Spears	6-Rayte'a Long	3-Morgan Batey	2-Morgan Batey	1-Morgan Batey
at Ole Miss	1/3/16	52-55	16-Christa Reed	8-Marqu'es Webb	5-Minta Spears	2-Rayte'a Long	1-Rachel Bell
SOUTH CAROLINA	01/07/16	61-71	14-Rebekah Dahlman	6-Rebekah Dahlman	4-Minta Spears	2-Rebekah Dahlman Jasmine Jenkins	1-Kendall Shaw
at Alabama	01/10/16	54-48	17-Christa Reed	7-Minta Spears	4-Minta Spears Christa Reed	2-Rachel Bell	1-Rachel Bell
LSU	01/14/16	58-42	15-Christa Reed	4-Morgan Batey Jasmine Jenkins Minta Spears	4-Jasmine Jenkins Rebekah Dahlman	3-Rebekah Dahlman Minta Spears	2-Marqu'es Webb
at Tennessee	01/21/16	49-58	17-Rebekah Dahlman	13-Marqu'es Webb	5-Minta Spears	2-Marqu'es Webb	1-Marqu'es Webb

2015-16 SEASON: BY THE NUMBERS ...

WINS & LOSSES

Overall	13-5
Home Games	9-1
Road Games	3-4
Neutral Sites	1-0
SEC Games	2-3
Home	1-1
Road	1-2
Non-Conference Games	11-2
Home	8-0
Road	2-2
Neutral	1-0
Overtime Games	0-0
Day Games (Tipoff between 11 a.m. and 4 p.m. local time)	9-2
Night Games (Tipoff 5 p.m. or later local time)	4-3
Television (Includes games on SEC Network Plus)	10-4
vs. Ranked Teams (AP)	0-2
vs. Unranked Teams	13-3
VU Scores First	9-3
Opponent Scores First	4-2
Leading at Halftime	12-2
Trailing/Tied at Halftime	1-3
Leading with 10 Minutes	12-2
Tied with 10 Minutes	0-0
Trailing with 10 Minutes	1-3
Leading with 5 Minutes	13-2
Tied with 5 Minutes	0-0
Trailing with 5 Minutes	0-3
VU Shoots 50% or Better	7-0
Opponent Shoots 50% or Better	0-1
VU Outrebounds Opponent	12-3
Opponent Outrebounds VU	1-2
Rebounds Tied	0-0
VU has fewer turnovers	8-1
VU has more turnovers	5-4
Turnovers Tied	0-0
VU Makes More Threes	6-2
Opponent Makes More	5-3
Teams Make Same Threes	2-0

BENCHMARK GAMES

10+ Points	2015-16	Career
Marqu'es Webb	4	23
Morgan Batey	2	22
Rebekah Dahlman	7	24
Jasmine Jenkins	7	12
Christa Reed	11	14
Rachel Bell	6	16
Kristen Gaffney	3	10
Minta Spears (at VU only)	2	2
Kendall Shaw	0	2
Rayte'a Long	1	1
Miaya Seawright	0	0
Myka Dancy	0	0

20+ points	2015-16	Career
Rebekah Dahlman	0	2
Jasmine Jenkins	1	1
Christa Reed	1	2
Rachel Bell	2	2

Double-Doubles	2015-16	Career
Morgan Batey		5
Marqu'es Webb	1	4

10+ Rebounds	2015-16	Career
Morgan Batey	1	6
Marqu'es Webb	2	5
Rebekah Dahlman	1	1
Kristen Gaffney	1	1
Kendall Shaw	1	1

30+ points	2014-15	Career
None		

10+ Assists	2014-15	Career
Minta Spears	1	1

WHEN WAS THE LAST TIME VANDERBILT...

Scored 100 or more points

103, at Florida (2/6/11)

Allowed 100 or more points

102, Alabama (2/21/99)

Scored 49 or fewer points

49, at Tennessee (1/21/16)

44, at Miss. State (1/29/15)

Held an opponent to 39 or less points

39 vs. ETSU (12/5/15)

38 vs. Presbyterian (11/23/15)

29 vs. Air Force (11/30/15)

39 vs. Mississippi Valley State (11/15/15)

Scored 50 points in a half

51 (2nd Half) vs. Troy (12/10/15)

50 (2nd half) vs. LSU (1/19/14)

Scored 60 points in a half

66 (2nd), vs. Quinnipiac (11/26/10)

Allowed 50 points in a half

50 (2nd), vs. No. 11/12 Kentucky (2/7/15)

Scored 20 pts or less in first half

17, vs. Alabama (1/10/15)

16, vs. Ole Miss (2/5/15)

19, at Miss. State (1/29/15)

Scored 20 pts or less in second half

20 at #3/3 Connecticut (NCAA Second Round - 3/25/13)

Scored 10 pts or less in a half

8 (1st) at LSU (1/13/08)

Held an opponent to 19 pts or less in a half

14 (1st) vs. Fordham (12/30/15)

17 (1st) vs. Troy (12/10/15)

15 (1st) vs. ETSU (12/5/15)

16 (2nd) vs. Presbyterian (11/23/15)

11 (1st) and 18 (2nd) vs. Air Force (11/30/15)

Held an opponent to 10 pts or less in a half

8 (1st) vs. Mississippi Valley State (11/15/15)

Shot less than 20% from the field in a half

17.1% (1st) (6-35) vs. Missouri (3/7/13 - SEC Tournament)

Shot 70% from the field

76.2 (32-42) vs. Alabama (2/4/07)

Shot 60% from the field

69.2% (36-52) vs. Air Force (11/30/15)

60.5% (26-43) vs. Alabama-Huntsville (1/15/15)

Held an opponent to less than 25% from the field

24.1 (13-54) vs. Mississippi Valley State (11/15/15)

21.9 (14-64) vs. Troy (12/10/15)

Shot 60% for a half

62.5% (15-24) vs. Air Force (11/30/15)

60.0% (15-25) at Florida (2/19/15)

68.2 (15-22) vs. Alabama-Huntsville (1/15/15)

68.4% (13-19) vs. Mississippi State (1/11/15)

Shot 70% for a half

73.1 (19-26) vs. Troy (12/10/15)

75.0% (21-28) vs. Air Force (11/30/15)

70.4 (19-27, 1st), vs. Ole Miss (1/3/10)

Shot between 60-69% from 3-PT

66.7% (10-15) Appalachian State (11/8/13)

Shot better than 70% from 3-PT

75% (3-4) vs. Arkansas (1/22/15)

Shot 50% from 3-PT on the road

57.1% (8-of-14) at Florida (2/19/15)

Shot 90% at the foul line

94.1% (16-17) vs. Ohio (11/28/15)

Made 10 or more 3-point field goals

11, vs. Elon (11/29/13)

Did not attempt a three-pointer in a half

(1st half) vs. S. Carolina (2/15/15); 0-0 (2nd) vs. Arkansas (1/22/15)

(2nd) vs. Mississippi State (1/11/15)

Attempted 45 or fewer shots

45 vs. Ole Miss (1/3/16)

42 vs. Fordham (12/30/15)

35 vs. Mississippi State (1/11/15)

Had 50 rebounds

52 vs. Minnesota (11/28/14), Gulf Coast Showcase

Had 25 or more assists

27 vs. Troy (12/10/15)

28 vs. UNC Asheville (12/21/13)

Had 15 steals

15 vs. Air Force (11/30/15)

15 vs. Alabama-Huntsville (1/15/15)

15 vs. Austin Peay (11/27/09)

Had 10 or fewer turnovers

9 vs. LSU (1/14/16)

10 vs. Presbyterian (11/23/15)

Had 25 or more turnovers

25 vs. Green Bay (11/21/15)

Had 6 players score double figures

at Alabama (1/8/09); Risper 17, Wirth 15, Marsh 13, Rhoads 12, Tuomi 12, Chisholm 11

Had 5 players score double figures

vs. Green Bay (11/17/14); Webb 13, Reed 12, Batey 11, Caron-Goudreau 10, Kea 10

Had 3 players score 20 or more points

at Florida (2/6/11): Clarke 23, Holzer 23, Tuomi 20

Had a player score 40 points

40, Chantelle Anderson vs. Portland State (12/23/01)

Had a player score 30 points

30, Christina Foggie vs. Marquette (11/17/13)

Had a player with 15 rebounds

17, Tiffany Clarke vs. Florida (2/16/12)

Had a player with 10 assists

14, Minta Spears vs. Austin Peay (11/28/15)

10, Jasmine Lister at Auburn (1/5/14)

Had a player with five steals

5, Elan Brown vs. Louisville (3/20/11)

Had a player with five blocked shots

5, Audrey-Ann Caron-Goudreau vs. Arkansas (1/22/15)

6, Liz Sherwood vs. Mississippi State (1/10/08)

Had two double-doubles in the same game

vs. Minnesota (11/28/14), Audrey-Ann Caron-Goudreau (21 pts, 14 rebs) & Rebekah

Dahlman (17 pts, 10 rebs)

Had a player with consecutive 20-point, 10-rebound games

Tiffany Clarke (2/17-20, 2011)

Had three straight double-doubles by same player

Tiffany Clarke (3/7 SECT vs. Missouri, 3/8 SECT vs. Kentucky & 3/23/2013 NCAA vs.

Saint Joseph's)

Had consecutive double-doubles by the same player

Audrey-Ann Caron-Goudreau (11/14 vs. Belmont and 11/17 vs. Green Bay)

Had a game where combined 55-plus fouls were called

55 vs. Dayton (11/18/15)

Had an overtime game

at Florida (2/19/15, Won, 76-75

vs. Green Bay (11/17/14), Won, 68-64

Had a double overtime game

at Florida (2/6/11), W, 103-97



Melanie BALCOMB

Head Coach
14th Season

As she enters her 14th season at the helm, Melanie Balcomb has established herself as an iconic figure for the Vanderbilt women's basketball team while becoming the program's all-time leader in victories.

Balcomb, who arrived in Nashville prior to the 2002-03 season, has guided the Commodores to the NCAA Tournament in 12 of her 13 seasons, and has won 20 or more games in 11 of those years. She owns a career record of 455-239, including a 292-135 mark at VU, and has led the Commodores to three SEC Tournament Championships, four Sweet 16 trips and eight top-25 finishes.

With her 115-79 record in SEC games, Balcomb enters the 2015-16 campaign with more SEC wins than any active coach in the conference. (See full list on next page). She has coached nine WNBA draft picks, a WBCA National Defensive Player of the Year (Jennifer Risper) and a two-time SEC scoring champion (Christina Foggie) during her time at Vanderbilt while graduating 100 percent of her four-year players.

Balcomb, who has also served as a member of the USA Basketball Junior National Team Committee, became the all-time wins leader in Vanderbilt WBB history on Feb. 28, 2013, when the Commodores defeated Auburn. It was Balcomb's 257th victory at VU, and enabled her to surpass Jim Foster for the program's wins record.

Balcomb also is active in the Nashville community, and sees to it that the members of her program are, too. Balcomb donates time to the local YWCA, the Girl Scouts and has participated in numerous charity walks and food drives. This fall, she played a role in Vanderbilt's efforts to send water, shoes and other needs to the victims of the South Carolina floods. For a more complete list of her community involvement, see page 23.

During her 20-plus years of collegiate head coaching experience, Balcomb has emerged as a renowned offensive strategist -- and that reputation has been enhanced during her tenure at Vanderbilt. Her Commodore teams have finished in the top-50 nationally in field goal percentage in each of her 13 seasons at VU, including four teams that have finished among the nation's top four. Balcomb's inaugural Commodore team in 2002-03 led the nation in field goal percentage, shooting 51.3 percent. The 2014-15 team ranked 10th in the country and second in the SEC at 45.4 percent, and the 2013-14 squad ranked 12th in the nation, and second in the SEC, shooting 45.9 percent.

The Commodores are also one of the nation's best 3-point shooting teams on a routine basis. In 2013-14, the Commodores ranked third in the nation, and led the SEC, in 3-point shooting at 40.0 percent. Balcomb's 2006-07 squad led the nation in 3-point shooting at 43.7 percent.

In her first 10 seasons at Vanderbilt, Balcomb won 13 games in the NCAA Tournament, including a 9-1 mark in the opening round during that stretch. Balcomb's teams have been especially successful at home, with Vanderbilt posting a 164-38 record at Memorial Gym during Balcomb's 13-year tenure.

Last season, the Commodores finished with a 15-16 overall record. The team dealt with all kinds of adversity -- including suffering a rash of injuries while facing one of the nation's most-challenging schedules -- but Balcomb steered the team to several impressive victories, including five wins over teams that went on to advance to the NCAA Tournament: Green Bay, James Madison, Mississippi State, Minnesota and Arkansas.

Among the biggest highlights was a 78-62 win over previously-unbeaten Mississippi State on Jan. 11, which ended the Bulldogs' 18-game winning streak. It marked one of only five regular-season losses for Mississippi State. Also, Vanderbilt's victory over James Madison in December represented one of only three regular-season losses suffered by the Dukes.

Balcomb led the Commodores to 18 wins in the regular season during the 2013-14 season. The team earned a No. 8 seed in the NCAA tournament which enabled Vanderbilt to stretch its overall streak of NCAA appearances to 15 consecutive years, including 12 in a row under Balcomb.

The team, which climbed as high No. 16 in the Associated Press poll, reeled off 13 wins in 14 games during one stretch midway through the season. The productive stretch included a victory over in-state rival Tennessee, marking the third time in the past six seasons that one of Balcomb's teams had defeated the Lady Vols.

Her 2013-14 Vanderbilt squad featured two players -- Christina Foggie and Jasmine Lister -- that formed one of the most dynamic backcourts in team history. Foggie, who led the SEC in scoring at 19.0 points per game as a senior, became the program's all-time leader in 3-pointers and Lister became the team's all-time leader in minutes played by a wide margin. Both players were named WBCA All-America Honorable Mentions, and Foggie was a second-round WNBA draft pick. Lister, who now serves as a graduate assistant at UConn, made her WNBA debut with the L.A. Sparks in 2015.

The 2012-13 squad at Vanderbilt dealt with serious injury problems, but still won over 20 games and reached the second round of the NCAA Tournament. Three starters - Stephanie Holzer, Foggie and Kady Schran - combined to miss 60 games, but the Commodores scored a pair of huge wins at Florida and over No. 10 Texas A&M late in the year to solidify their 14th straight NCAA Tournament bid.

Clarke led the team in scoring (16.6) and rebounding (8.4) to earn First Team All-SEC honors from the league's coaches, the 11th time a Balcomb coached player has done so. Clarke also earned first team all-conference honors from the Associated Press and All-Region recognition from the Women's Basketball Coaches Association.

Vanderbilt won its first round game over ninth-seeded Saint Joseph's, giving Balcomb a 10-1 record in the first round of the NCAA Tournament. The Commodores fell in the second round to top-seeded Connecticut, capping the season at 21-12.

Balcomb started at Vanderbilt in 2002 and wasted no time in implementing her own style of winning. Working to transition veteran players into a new system while building new team chemistry, Balcomb's first year saw the Commodores win six of their last seven regular season games, earn an NCAA Tournament berth, and lead the nation in field goal percentage (51.3) against the fourth toughest schedule in the country. She was named a finalist for the Naismith Coach of the Year award.

In 2003-04, Balcomb led the Commodores to their fourth Southeastern Conference Tournament title. She masterfully balanced strong upper-class leadership with exciting freshmen talent, winning 10 consecutive games and advancing to the program's 11th Sweet 16 appearance. One year later, her team made its second consecutive trip to the NCAA Sweet 16.

THE BALCOMB FILE

Born: Sept. 24, 1962, in Princeton, N.J.

Parents: Alan and Barbara Balcomb of Cranbury, N.J.

High School: Hightstown

College: Trenton State
(now called The College of New Jersey)

Degrees:

Bachelor of Science (1984)

Master's of Education (1985)

Sports Administration/Athletic Management

Coaching Career

2002-present.....	Vanderbilt
	Head Coach
1995-2002	Xavier
	Head Coach
1993-95	Ashland
	Head Coach
1990-93	Providence College
	Assistant Coach
1989-90	Ohio
	Assistant Coach
1985-89	Niagara
	Assistant Coach

Playing Career

1982-85	Trenton State
---------------	---------------

Four-year letterwinner... 1,000-Point Club... Academic All-American ...
Elected to The College of New Jersey (formerly Trenton State) Hall of Fame in 2015

1980-81	Georgia Southern
	Played a semester before transferring to Trenton State College

1976-80	Hightstown H.S.
	Inducted into the Hightstown High School Hall of Fame in 1996

The Commodores posted the most wins (10) in the program's history in Southeastern Conference play finishing with a 10-4 record.

The Commodores were ranked seventh in the final AP poll of the 2006-07 season, and earned a No. 2 seed in the NCAA Tournament after winning another SEC Tournament title. That Vanderbilt squad was the nation's best three-point shooting team, and ranked among the top 10 in points scored. The team's 28-6 mark was the best record for a VU squad in 14 years.

The 2008 season was also one of Balcomb's most impressive coaching jobs. Despite graduating three All-SEC seniors, she led the Commodores to a 25-9 record and the school's 13th appearance in the NCAA Sweet 16, all with two freshmen and no seniors in the starting lineup.

In 2009, Vanderbilt won its sixth SEC Tournament title, the third for Balcomb in the last six years. The team also advanced to the NCAA Sweet 16 for the 14th time in school history -- Balcomb's fourth trip with the Commodores. Vanderbilt finished the year ranked No. 8 in the ESPN/USA Today Coaches Poll after narrowly missing an upset of No. 1 seed Maryland in the Raleigh Regional Semifinal.

National accolades came flooding in for Vanderbilt, including senior Jennifer Risper being named the WBCA National Defensive Player of the Year. Risper and classmate Christina Wirth, who herself was named an All-American and the SEC Scholar-Athlete of the Year, were both selected in the 2009 WNBA Draft.

In 2010, Balcomb was faced with one of her most challenging tasks. Faced with replacing Risper and Wirth, Balcomb guided an undersized team back to the NCAA Tournament, where they narrowly missed advancing to their third consecutive Sweet 16.

Despite having to overcome numerous injuries throughout out the season and a size disadvantage in almost every game, Vanderbilt finished the season 23-11 overall. Individually, Balcomb helped junior point guard Jence Rhoads earn first team All-SEC honors, while senior shooting guard Merideth Marsh earned second team All-SEC accolades. Elan Brown and Tiffany Clarke were also named to the SEC All-Freshman Team.

The 2010-11 season featured many obstacles that Balcomb successfully maneuvered through to reach another NCAA Tournament and finish third in the SEC. Injuries took an unfortunate toll on the team throughout the year with at least one of Vanderbilt's five leading scorers unavailable for 14 out of the team's 32 games.

Despite the challenges, Balcomb again reached 20 wins, finishing 20-12 and 10-6 in the SEC. Individually, Balcomb helped Rhoads earn honorable mention All-America honors from the Associated Press in addition to first team All-SEC recognition. Rhoads was also a WBCA Region 3 All-American. Freshman center Stephanie Holzer was named honorable mention All-SEC, SEC Sixth Woman of the Year and to the SEC All-Freshmen team.

BALCOMB'S YEARLY RECORDS

Year	University	W	L	Postseason
2014-15	Vanderbilt	15	16	
2013-14	Vanderbilt	18	13	NCAA 1st Round
2012-13	Vanderbilt	21	12	NCAA 2nd Round
2011-12	Vanderbilt	23	10	NCAA 2nd Round
2010-11	Vanderbilt	20	12	NCAA 1st Round
2009-10	Vanderbilt	23	11	NCAA 2nd Round
2008-09	Vanderbilt	26	9	NCAA Sweet 16
2007-08	Vanderbilt	25	9	NCAA Sweet 16
2006-07	Vanderbilt	28	6	NCAA 2nd Round
2005-06	Vanderbilt	21	11	NCAA 2nd Round
2004-05	Vanderbilt	24	8	NCAA Sweet 16
2003-04	Vanderbilt	26	8	NCAA Sweet 16
2002-03	Vanderbilt	22	10	NCAA 2nd Round
2001-02	Xavier	12	19	
2000-01	Xavier	31	3	NCAA Elite 8
1999-00	Xavier	26	5	NCAA 1st Round
1998-99	Xavier	24	9	NCAA 2nd Round
1997-98	Xavier	17	12	WNIT
1996-97	Xavier	10	17	
1995-96	Xavier	15	13	
1994-95	Ashland	10	17	
1993-94	Ashland	18	9	

Balcomb's numbers entering 2015-16

Overall (22 years)	455	239	.656
Ashland (Two years)	28	26	.538
Xavier (Seven years)	135	78	.634
Vanderbilt (13 years)	292	135	.684

BALCOMB BALL

- ★ Three SEC Tournament titles
- ★ VU-record 11 SEC wins in 2008
- ★ 10-2 record in NCAA First Round
- ★ Four Sweet 16 appearances
- ★ Nine WNBA Draft picks since 2003
- ★ 100% graduation rate

SEC ACTIVE COACHING RECORDS

	RECORD	SEASONS
Melanie Balcomb (Vanderbilt)	115-79	13
Gary Blair (Texas A&M)	88-89	13*
Matthew Mitchell (Kentucky)	81-43	8
Dawn Staley (South Carolina)	67-43	7
Amanda Butler (Florida)	56-68	8
Holly Warlick (Tennessee)	42-6	3
Nikki Caldwell (LSU)	37-27	4
Vic Schaefer (Miss. State)	21-27	3
Robin Pingeton (Missouri)	19-29	3
Terri Williams-Fournoy (Auburn)	15-33	3
Matt Insell (Ole Miss)	9-23	2
Kristy Curry (Alabama)	9-23	2
Jimmy Dykes (Arkansas)	6-10	1
Joni Crenshaw (Georgia)	0-0	0

* Includes wins at TAMU and Arkansas

NCAA FG Pct. & 3 FG Pct.

Year	Field Goals		3 Point FGs	
	Rank	Pct.	Rank	Pct.
2014-15	10	45.4	145	31.8
2013-14	12	45.9	3	40.0
2012-13	41	42.6	40	34.1
2011-12	6	46.4	6	37.2
2010-11	14	45.1	38	34.9
2009-10	17	45.3	20	36.7
2008-09	12	45.3	31	35.5
2007-08	10	46.6	10	38.1
2006-07	2	50.6	1	43.7
2005-06	4	47.9	9	38.9
2004-05	2	49.2	5	37.4
2003-04	10	46.6	14	37.4
2002-03	1	51.3	5	39.4

BALCOMB vs. SEC (at Vanderbilt)

Alabama	15-2
Arkansas	15-2
Auburn	18-2
Florida	14-6
Georgia	13-9
Kentucky	10-10
LSU	11-9
Ole Miss	12-4
Miss State	12-6
Missouri	2-2
South Carolina	9-8
Tennessee	3-27
Texas A&M	2-2
Total	136-89



MORGAN BATEY

No. 25 • 5-10, Guard • Senior • Atlanta, Ga. (Pace Academy)

MAJOR: Medicine, health and society.

PERSONAL: Daughter of Cherie and Sam Batey ... Has one sister, Jordan, who is a junior on the tennis team at Temple ... Favorite basketball player is Maya Moore ... Favorite movie is The Blind Side ... Chose Vanderbilt over Memphis, Kansas and Miami ... Born on March 24, 1994 in Atlanta.

BATEY'S CAREER STATS

Season	gp-gs	min/avg	Total		3-Point		F-Throws		Rebounds											Scoring	
			fg-fga	pct	fg-fga	pct	ft-fa	pct	off	def	tot	avg	pf	fo	ast	to	blk	stl	pts	avg	
2012-13	31-4	474/15.3	30-83	.361	2-10	.200	12-18	.667	32	63	95	3.1	36	0	29	26	1	20	74	2.4	
2013-14	31-20	725/23.4	77-151	.510	0-0	.000	47-69	.681	63	101	164	5.3	87	5	50	51	1	42	201	6.5	
2014-15	31-29	863/27.8	106-208	.510	3-11	.273	48-62	.774	51	109	160	5.2	72	2	63	58	3	37	263	8.5	
2015-16	18-4	399/22.2	49-94	.521	1-2	.500	24-33	.727	18	40	58	3.2	30	2	34	37	2	28	123	6.8	
TOTAL	111-57	2461/22.2	262-536	.489	6-23	.261	131-182	.720	164	313	477	4.3	225	9	176	172	7	127	661	6.0	

BATEY'S SEASON STATS

Opponent	Date	gs	min	Total		3-Pointers		Free throws		Rebounds											pts	avg
				fg-fga	pct	3fg-fga	pct	ft-fa	pct	off	def	tot	avg	pf	a	t/o	blk	stl				
MISS. VALLEY STATE	11/15/15	*	32	5-7	.714	0-0	.000	3-5	.600	3	2	5	5.0	1	3	1	1	2	13	13.0		
at Dayton	11/18/15	*	21	1-5	.200	1-2	.500	3-4	.750	3	1	4	4.5	4	1	4	0	1	6	9.5		
at Green Bay	11/21/15	*	30	1-2	.500	0-0	.000	0-0	.000	1	3	4	4.3	2	2	4	0	0	2	7.0		
PRESBYTERIAN	11/23/15	*	8	0-1	.000	0-0	.000	0-0	.000	0	0	0	3.3	5	2	1	0	1	0	5.3		
AUSTIN PEAY	11/27/15		19	4-6	.667	0-0	.000	1-1	1.000	1	1	2	3.0	1	1	1	0	2	9	6.0		
OHIO	11/28/15		25	2-5	.400	0-0	.000	2-2	1.000	1	3	4	3.2	2	1	0	0	1	6	6.0		
AIR FORCE	11/30/15		21	4-4	1.000	0-0	.000	0-0	.000	0	2	2	3.0	0	3	2	0	4	8	6.3		
at DREXEL	12/3/15		18	2-5	.400	0-0	.000	0-0	.000	2	1	3	3.0	0	1	2	0	2	4	6.0		
ETSU	12/05/15		23	2-4	.500	0-0	.000	3-4	.750	1	3	4	3.1	2	2	3	0	3	7	6.1		
TROY	12/10/15		24	5-12	.417	0-0	.000	3-4	.750	0	4	4	3.2	0	6	3	0	3	13	6.8		
UT MARTIN	12/21/15		20	3-4	.750	0-0	.000	2-3	.667	0	0	0	2.9	5	1	3	0	3	8	6.9		
vs New Mexico State	12/29/15		31	4-5	.800	0-0	.000	0-2	.000	3	7	10	3.5	2	2	3	0	0	8	7.0		
at Fordham	12/30/15		21	2-7	.286	0-0	.000	0-0	.000	0	2	2	3.4	0	3	1	1	2	4	6.8		
at Ole Miss	1/3/16		13	2-3	.667	0-0	.000	0-0	.000	0	3	3	3.4	0	1	3	0	1	4	6.6		
SOUTH CAROLINA	01/07/16		20	2-3	.667	0-0	.000	2-2	1.000	0	2	2	3.3	1	2	0	0	0	6	6.5		
at Alabama	01/10/16		24	2-6	.333	0-0	.000	4-4	1.000	1	0	1	3.1	0	1	2	0	1	8	6.6		
LSU	01/14/16		19	4-6	.667	0-0	.000	0-0	.000	1	3	4	3.2	1	1	0	0	1	8	6.7		
at Tennessee	01/21/16		30	4-9	.444	0-0	.000	1-2	.500	1	3	4	3.2	4	1	4	0	1	9	6.8		
Totals		4	399	49-94	.521	1-2	.500	24-33	.727	18	40	58	3.2	30	34	37	2	28	123	6.8		



RACHEL BELL

No. 3 • 5-10 • Guard • Sophomore • Cumberland Furnace, Tenn. (Creek Wood)

MAJOR: Undeclared.

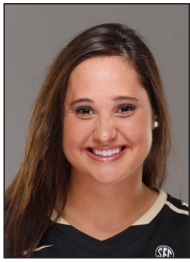
PERSONAL: Daughter of Patrick and Linda Bell. ... Has three brothers and one sister: Caitlin (22), Nicholas (29), Michael (28) and Andy (27). ... Birthdate is April 2, 1996. ... Was born in Nashville. ... Major is undecided.

BELL'S CAREER STATS

Season	gp-gs	min/avg	Total		3-Point		F-Throws		Rebounds												Scoring	
			fg-fga	pct	fg-fga	pct	ft-fa	pct	off	def	tot	avg	pf	fo	ast	to	blk	stl			pts	avg
2014-15	30-4	585/19.5	69-184	.375	36-100	.360	35-42	.833	25	35	60	2.0	21	0	21	37	3	12			209	7.0
2015-16	17-15	378/22.2	64-153	.418	24-71	.338	10-14	.714	9	18	27	1.6	19	0	12	30	3	8			162	9.5
TOTAL	47-19	963/20.5	133-337	.395	60-171	.351	45-56	.804	34	53	87	1.9	40	0	33	67	6	20			371	7.9

BELL'S SEASON STATS

Opponent	Date	gs	min	Total		3-Pointers		Free throws		Rebounds													
				fg-fga	pct	3fg-fga	pct	ft-fga	pct	off	def	tot	avg	pf	a	t/o	blk	stl	pts	avg			
at Dayton	11/18/15		27	4-11	.364	2-7	.286	1-2	.500	1	1	2	2.0	1	1	1	0	0			11	11.0	
at Green Bay	11/21/15		24	5-11	.455	1-6	.167	2-2	1.000	1	0	1	1.5	0	0	3	0	2			13	12.0	
PRESBYTERIAN	11/23/15	*	24	2-7	.286	2-6	.333	0-0	.000	0	1	1	1.3	1	0	0	0	2			6	10.0	
AUSTIN PEAY	11/27/15	*	15	3-8	.375	1-5	.200	0-0	.000	0	1	1	1.3	0	0	1	1	0			7	9.3	
OHIO	11/28/15	*	19	2-8	.250	1-4	.250	1-2	.500	0	0	0	1.0	2	0	3	0	1			6	8.6	
AIR FORCE	11/30/15	*	25	8-11	.727	4-4	1.000	0-1	.000	1	1	2	1.2	2	1	1	0	0			20	10.5	
at DREXEL	12/3/15	*	24	10-14	.714	4-6	.667	0-0	.000	0	0	0	1.0	2	3	0	0	0			24	12.4	
ETSU	12/05/15	*	24	6-16	.375	2-7	.286	2-2	1.000	0	0	0	0.9	0	3	1	0	0			16	12.9	
TROY	12/10/15	*	19	3-8	.375	1-4	.250	0-0	.000	1	1	2	1.0	3	1	3	0	0			7	12.2	
UT MARTIN	12/21/15	*	28	4-12	.333	2-5	.400	0-0	.000	0	1	1	1.0	2	0	2	0	0			10	12.0	
vs New Mexico State	12/29/15	*	14	1-3	.333	0-1	.000	0-0	.000	0	1	1	1.0	2	0	3	0	1			2	11.1	
at Fordham	12/30/15	*	17	3-4	.750	1-1	1.000	0-0	.000	1	2	3	1.2	1	0	3	0	0			7	10.8	
at Ole Miss	1/3/16	*	20	1-2	.500	1-1	1.000	0-0	.000	0	2	2	1.2	2	1	1	1	0			3	10.2	
SOUTH CAROLINA	01/07/16	*	28	3-12	.250	0-4	.000	3-4	.750	1	1	2	1.3	0	1	1	0	0			9	10.1	
at Alabama	01/10/16	*	25	3-11	.273	1-5	.200	1-1	1.000	1	3	4	1.5	1	0	4	1	2			8	9.9	
LSU	01/14/16	*	26	2-9	.222	1-4	.250	0-0	.000	1	2	3	1.6	0	1	1	0	0			5	9.6	
at Tennessee	01/21/16	*	19	4-6	.667	0-1	.000	0-0	.000	1	1	2	1.6	0	0	2	0	0			8	9.5	
Totals			15	378	64-153	.418	24-71	.338	10-14	.714	9	18	27	1.6	19	12	30	3	8			162	9.5



REBEKAH DALMAN

No. 1 • 5-9, Guard • RS Soph. • Braham, Minnesota (Braham Area)

MAJOR: Sociology

PERSONAL: Grandfather, John Kundla, is in the Naismith Basketball Hall of Fame for his work as head coach of the NBA's Minneapolis Lakers and the University of Minnesota men's basketball team ... Brother, Isaiah, set Minnesota prep scoring record before playing at Michigan State and advancing to two final fours ... Bother, Noah, owns the Minnesota high school rebounding record, played collegiately at Wofford and is currently playing professionally in Macedonia ...

DAHLMAN'S CAREER STATS

			Total		3-Point		F-Throws		Rebounds										Scoring	
Season	gp-gs	min/avg	fg-fga	pct	fg-fga	pct	ft-fa	pct	off	def	tot	avg	pf	fo	ast	to	blk	stl	pts	avg
2013-14	9-9	221/24.6	35-81	.432	18-35	.514	15-20	.750	10	23	33	3.7	14	0	14	23	0	13	103	11.4
2014-15	31-29	943/30.4	102-254	.402	43-124	.347	71-94	.755	34	90	124	4.0	69	2	54	96	1	36	318	10.3
2015-16	17-5	385/22.6	53-111	.477	24-63	.381	31-35	.886	9	50	59	3.5	25	0	21	32	0	13	161	9.5
TOTAL	57-43	1549/27.2	190-446	.426	85-222	.383	117-149	.785	53	163	216	3.8	108	2	89	151	1	62	582	10.2

DAHLMAN'S SEASON STATS

Opponent	Date	gs	min	Total		3-Pointers		Free throws		Rebounds											pts	avg
				fg-fga	pct	3fg-fga	pct	ft-fa	pct	off	def	tot	avg	pf	a	t/o	blk	stl				
at Dayton	11/18/15		22	3-6	.500	2-3	.667	1-1	1.000	0	3	3	3.0	4	1	2	0	0		9	9.0	
at Green Bay	11/21/15	*	19	1-5	.200	1-4	.250	0-0	.000	2	5	7	5.0	3	0	3	0	0		3	6.0	
PRESBYTERIAN	11/23/15		16	0-3	.000	0-2	.000	0-0	.000	0	3	3	4.3	0	1	1	0	0		0	4.0	
AUSTIN PEAY	11/27/15		23	7-9	.778	3-4	.750	0-0	.000	0	4	4	4.3	0	0	2	0	2		17	7.3	
OHIO	11/28/15		19	2-4	.500	2-4	.500	2-2	1.000	0	5	5	4.4	1	0	3	0	1		8	7.4	
AIR FORCE	11/30/15		20	3-7	.429	1-3	.333	1-2	.500	0	1	1	3.8	0	2	1	0	1		8	7.5	
at DREXEL	12/3/15		16	2-5	.400	1-3	.333	2-3	.667	0	3	3	3.7	0	1	1	0	0		7	7.4	
ETSU	12/05/15		17	5-7	.714	2-3	.667	3-4	.750	2	1	3	3.6	0	1	1	0	1		15	8.4	
TROY	12/10/15		17	5-9	.556	1-4	.250	3-4	.750	0	5	5	3.8	2	1	2	0	0		14	9.0	
UT MARTIN	12/21/15		28	3-7	.429	2-4	.500	0-0	.000	0	3	3	3.7	2	3	1	0	0		8	8.9	
vs New Mexico State	12/29/15		27	6-10	.600	2-6	.333	2-2	1.000	1	3	4	3.7	1	3	2	0	0		16	9.5	
at Fordham	12/30/15		22	2-5	.400	1-2	.500	5-5	1.000	1	0	1	3.5	1	1	2	0	1		10	9.6	
at Ole Miss	1/3/16		14	1-5	.200	0-2	.000	4-4	1.000	1	1	2	3.4	1	0	2	0	0		6	9.3	
SOUTH CAROLINA	01/07/16	*	33	5-10	.500	2-7	.286	2-2	1.000	2	4	6	3.6	3	3	1	0	2		14	9.6	
at Alabama	01/10/16	*	28	1-4	.250	0-2	.000	0-0	.000	0	2	2	3.5	2	0	2	0	1		2	9.1	
LSU	01/14/16	*	28	2-6	.333	1-5	.200	2-2	1.000	0	3	3	3.4	2	4	1	0	3		7	9.0	
at Tennessee	01/21/16	*	36	5-9	.556	3-5	.600	4-4	1.000	0	4	4	3.5	3	0	5	0	1		17	9.5	
Totals		5	385	53-111	.477	24-63	.381	31-35	.886	9	50	59	3.5	25	21	32	0	13	161	9.5		



MYKA DANCY

No. 12 • Guard • Sophomore • Antioch, Tenn. (Antioch)

MAJOR: Undeclared.
PERSONAL: Daughter of Michael Dancy (Deceased) and Tonna Dancy. ... Has two siblings, Corey Brown (33) and Chelsea Dancy (21). Her late father played at Tennessee State University 1981-83 ... Daughter of Kathy and Nate Dahlman ... Has five siblings: Isaiah, Noah, Jonah, Hannah and Zach ... Born August 11, 1994, in Cambridge, Minn.

DANCY'S CAREER STATS

Season	gp-gs	min/avg	Total		3-Point		F-Throws		Rebounds											Scoring	
			fg-fga	pct	fg-fga	pct	ft-fta	pct	off	def	tot	avg	pf	fo	ast	to	blk	stl	pts	avg	
2015-16	4-0	13/3.3	0-0	.000	0-0	.000	0-0	.000	0	1	1	0.3	1	0	0	1	0	0	0	0.0	
TOTAL	4-0	13/3.3	0-0	.000	0-0	.000	0-0	.000	0	1	1	0.3	1	0	0	1	0	0	0	0.0	

DANCY'S SEASON STATS

Opponent	Date	gs	min	Total		3-Pointers		Free throws		Rebounds											
				fg-fga	pct	3fg-fga	pct	ft-fta	pct	off	def	tot	avg	pf	a	t/o	blk	stl	pts	avg	
MISS. VALLEY STATE	11/15/15		5	0-0	.000	0-0	.000	0-0	.000	0	0	0	0.0	1	0	1	0	0	0	0.0	
AIR FORCE	11/30/15		2	0-0	.000	0-0	.000	0-0	.000	0	0	0	0.0	0	0	0	0	0	0	0.0	
ETSU	12/05/15		2	0-0	.000	0-0	.000	0-0	.000	0	1	1	0.3	0	0	0	0	0	0	0.0	
TROY	12/10/15		4	0-0	.000	0-0	.000	0-0	.000	0	0	0	0.3	0	0	0	0	0	0	0.0	
Totals		0	13	0-0	.000	0-0	.000	0-0	.000	0	1	1	0.3	1	0	1	0	0	0	0.0	



KRISTEN GAFFNEY

No. 24 • 6-1, Forward • RS Jr. • Cary, N.C.(Green Hope)

MAJOR: Majoring in Medicine, Health and Society.

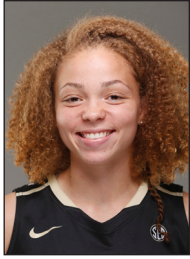
PERSONAL: Daughter of Jim and Peggy Gaffney ... Has one brother, Jimmy ... Favorite basketball player is Michael Jordan ... Favorite sport other than basketball is beach volleyball ... Born December 11, 1993, in Westchester, N.Y.

GAFFNEY'S CAREER STATS

			Total		3-Point		F-Throws		Rebounds											Scoring	
Season	gp-gs	min/avg	fg-fga	pct	fg-fga	pct	ft-fa	pct	off	def	tot	avg	pf	fo	ast	to	blk	stl	pts	avg	
2013-14	4-0	75/18.8	5-15	.333	0-2	.000	2-5	.400	5	14	19	4.8	6	0	8	3	0	2	12	3.0	
2014-15	24-5	369/15.4	55-108	.509	1-12	.083	15-28	.536	16	47	63	2.6	39	1	11	28	2	13	126	5.3	
2015-16	17-0	310/18.2	26-57	.456	2-12	.167	14-25	.560	18	37	55	3.2	13	0	30	15	3	20	68	4.0	
TOTAL	45-5	754/16.8	86-180	.478	3-26	.115	31-58	.534	39	98	137	3.0	58	1	49	46	5	35	206	4.6	

GAFFNEY'S SEASON STATS

Opponent	Date	gs	min	Total		3-Pointers		Free throws		Rebounds											pts	avg
				fg-fga	pct	3fg-fga	pct	ft-fa	pct	off	def	tot	avg	pf	a	t/o	blk	stl				
MISS. VALLEY STATE	11/15/15		22	1-4	.250	0-1	.000	0-0	.000	0	1	1	1.0	0	3	0	0	3	2	2.0		
at Dayton	11/18/15		5	1-2	.500	0-0	.000	0-2	.000	0	1	1	1.0	0	0	0	0	0	2	2.0		
at Green Bay	11/21/15		6	1-1	1.000	0-0	.000	0-0	.000	0	2	2	1.3	0	0	0	0	0	2	2.0		
PRESBYTERIAN	11/23/15		22	4-7	.571	0-0	.000	2-3	.667	3	1	4	2.0	0	2	2	0	0	10	4.0		
AUSTIN PEAY	11/27/15		23	5-5	1.000	0-0	.000	2-2	1.000	2	5	7	3.0	1	3	3	0	1	12	5.6		
OHIO	11/28/15		28	0-4	.000	0-0	.000	0-0	.000	3	0	3	3.0	3	3	0	0	1	0	4.7		
AIR FORCE	11/30/15		23	2-2	1.000	2-2	1.000	0-0	.000	1	2	3	3.0	1	2	0	1	0	6	4.9		
at DREXEL	12/3/15		30	4-5	.800	0-1	.000	3-3	1.000	0	5	5	3.3	1	2	0	1	3	11	5.6		
ETSU	12/05/15		25	1-3	.333	0-0	.000	0-0	.000	1	5	6	3.6	2	2	0	0	2	2	5.2		
TROY	12/10/15		23	3-6	.500	0-1	.000	1-2	.500	3	3	6	3.8	0	1	2	1	1	7	5.4		
UT MARTIN	12/21/15		14	1-5	.200	0-3	.000	3-5	.600	3	3	6	4.0	0	1	2	0	2	5	5.4		
vs New Mexico State	12/29/15		29	2-5	.400	0-2	.000	0-4	.000	1	3	4	4.0	2	7	1	0	6	4	5.3		
at Fordham	12/30/15		24	0-2	.000	0-0	.000	3-4	.750	0	1	1	3.8	3	1	1	0	0	3	5.1		
at Ole Miss	1/3/16		22	1-6	.167	0-2	.000	0-0	.000	1	2	3	3.7	0	3	3	0	1	2	4.9		
at Alabama	01/10/16		1	0-0	.000	0-0	.000	0-0	.000	0	1	1	3.5	0	0	1	0	0	0	4.5		
LSU	01/14/16		9	0-0	.000	0-0	.000	0-0	.000	0	2	2	3.4	0	0	0	0	0	0	4.3		
at Tennessee	01/21/16		4	0-0	.000	0-0	.000	0-0	.000	0	0	0	3.2	0	0	0	0	0	0	4.0		
Totals		0	310	26-57	.456	2-12	.167	14-25	.560	18	37	55	3.2	13	30	15	3	20	68	4.0		



JASMINE JENKINS

No. 15 • 5-8, Guard • Jr. Gainesville, Ga. (East Hall)

MAJOR: Human and organizational development.

PERSONAL: Daughter of Sharon Jenkins-Jackson and Timmy Jenkins ... Has four siblings, Diamond Casper, Noah Jenkins, Isaiah Jenkins and Timothy Jenkins ... Favorite WNBA team is the Minnesota Lynx and favorite player is Sue Bird ... Favorite move is Finding Nemo ... Chose Vanderbilt over Western Carolina and Auburn ... Born July 4, 1994, in Gainesville, Ga.

JENKINS' CAREER STATS

			Total		3-Point		F-Throws		Rebounds											Scoring	
Season	gp-gs	min/avg	fg-fga	pct	fg-fga	pct	ft-fa	pct	off	def	tot	avg	pf	fo	ast	to	blk	stl	pts	avg	
2012-13	25-0	367/14.7	11-40	.275	2-4	.500	33-51	.647	11	49	60	2.4	40	0	32	50	4	9	57	2.3	
2013-14	31-2	610/19.7	46-112	.411	5-12	.417	66-80	.825	22	50	72	2.3	66	3	60	70	5	22	163	5.3	
2014-15	31-22	721/23.3	47-112	.420	0-4	.000	26-42	.619	18	52	70	2.3	61	2	84	91	5	26	120	3.9	
2015-16	18-14	405/22.5	53-124	.427	5-13	.385	32-46	.696	19	37	56	3.1	22	0	40	28	0	17	143	7.9	
TOTAL	105-38	2103/20.0	157-388	.405	12-33	.364	157-219	.717	70	188	258	2.5	189	5	216	239	14	74	483	4.6	

JENKINS' SEASON STATS

Opponent	Date	gs	min	Total		3-Pointers		Free throws		Rebounds											pts	avg
				fg-fga	pct	3fg-fga	pct	ft-fa	pct	off	def	tot	avg	pf	a	t/o	blk	stl				
MISS. VALLEY STATE	11/15/15	*	25	9-12	.750	2-3	.667	4-5	.800	2	2	4	4.0	0	4	1	0	1	24	24.0		
at Dayton	11/18/15	*	29	5-15	.333	0-1	.000	6-7	.857	2	3	5	4.5	3	2	1	0	0	16	20.0		
at Green Bay	11/21/15	*	37	4-6	.667	0-0	.000	3-4	.750	0	1	1	3.3	3	3	5	0	2	11	17.0		
PRESBYTERIAN	11/23/15	*	34	4-17	.235	0-1	.000	2-5	.400	6	1	7	4.3	0	4	0	0	0	10	15.3		
AUSTIN PEAY	11/27/15	*	19	2-7	.286	0-0	.000	0-0	.000	0	2	2	3.8	0	0	0	0	0	4	13.0		
OHIO	11/28/15	*	18	1-6	.167	0-0	.000	0-0	.000	2	0	2	3.5	2	0	1	0	1	2	11.2		
AIR FORCE	11/30/15	*	21	6-7	.857	0-0	.000	0-1	.000	0	2	2	3.3	0	2	2	0	3	12	11.3		
at DREXEL	12/3/15	*	26	4-6	.667	0-0	.000	2-8	.250	0	3	3	3.3	1	4	3	0	3	10	11.1		
ETSU	12/05/15	*	16	0-2	.000	0-0	.000	2-2	1.000	1	3	4	3.3	0	2	1	0	1	2	10.1		
TROY	12/10/15	*	25	6-9	.667	1-2	.500	4-4	1.000	1	3	4	3.4	2	7	0	0	2	17	10.8		
UT MARTIN	12/21/15	*	22	1-6	.167	0-1	.000	0-0	.000	1	2	3	3.4	0	1	0	0	1	2	10.0		
vs New Mexico State	12/29/15	*	11	1-1	1.000	0-0	.000	0-0	.000	0	0	0	3.1	3	1	1	0	0	2	9.3		
at Fordham	12/30/15	*	28	2-6	.333	1-2	.500	0-0	.000	0	2	2	3.0	2	1	1	0	0	5	9.0		
at Ole Miss	1/3/16	*	25	1-6	.167	0-0	.000	2-2	1.000	1	5	6	3.2	2	2	4	0	0	4	8.6		
SOUTH CAROLINA	01/07/16		11	2-3	.667	0-0	.000	0-0	.000	1	2	3	3.2	1	2	2	0	2	4	8.3		
at Alabama	01/10/16		21	2-4	.500	1-1	1.000	4-4	1.000	1	2	3	3.2	1	0	2	0	0	9	8.4		
LSU	01/14/16		17	1-3	.333	0-0	.000	0-0	.000	1	3	4	3.2	0	4	0	0	0	2	8.0		
at Tennessee	01/21/16		20	2-8	.250	0-2	.000	3-4	.750	0	1	1	3.1	2	1	4	0	1	7	7.9		
Totals			14	405	53-124	.427	5-13	.385	32-46	.696	19	37	56	3.1	22	40	28	0	17	143	7.9	



RAYTE'A LONG

No. 44 • 6-0 • Forward • Jr. Dayton, Ohio (Chaminade)

MAJOR: Interdisciplinary: Technology, Management and Society.

PERSONAL: Daughter of Kevin Long and Rachel Thompson ... Has one brother, Kevin ... Favorite basketball player is Steve Nash ... Favorite sport other than basketball is track and field ... Favorite movie is The Lion King ... Chose Vanderbilt over Hampton and Houston ... Born January 3, 1994, in Dayton, Ohio.

LONG'S CAREER STATS

			Total		3-Point		F-Throws		Rebounds											Scoring	
Season	gp-gs	min/avg	fg-fga	pct	fg-fga	pct	ft-fa	pct	off	def	tot	avg	pf	fo	ast	to	blk	stl	pts	avg	
2012-13	25-0	170/6.8	7-17	.412	0-0	.000	17-22	.773	7	26	33	1.3	31	1	7	18	0	8	31	1.2	
2013-14	26-0	223/8.6	17-34	.500	0-2	.000	14-18	.778	21	38	59	2.3	53	1	13	29	1	8	48	1.8	
2014-15	22-0	159/7.2	12-22	.545	0-0	.000	7-15	.467	8	20	28	1.3	21	0	9	15	2	11	31	1.4	
2015-16	18-13	273/15.2	27-40	.675	0-1	.000	16-27	.593	30	42	72	4.0	36	0	8	20	2	9	70	3.9	
TOTAL	91-13	825/9.1	63-113	.558	0-3	.000	54-82	.659	66	126	192	2.1	141	2	37	82	5	36	180	2.0	

LONG'S SEASON STATS

Opponent	Date	gs	min	Total		3-Pointers		Free throws		Rebounds											
				fg-fga	pct	3fg-fga	pct	ft-fga	pct	off	def	tot	avg	pf	a	t/o	blk	stl	pts	avg	
MISS. VALLEY STATE	11/15/15		19	4-6	.667	0-0	.000	1-4	.250	1	6	7	7.0	3	0	2	1	1	9	9.0	
at Dayton	11/18/15		8	0-0	.000	0-0	.000	0-0	.000	1	0	1	4.0	4	0	1	0	0	0	4.5	
at Green Bay	11/21/15		23	2-2	1.000	0-0	.000	6-8	.750	4	5	9	5.7	3	1	3	0	1	10	6.3	
PRESBYTERIAN	11/23/15		21	2-5	.400	0-0	.000	1-2	.500	5	4	9	6.5	1	0	0	0	0	5	6.0	
AUSTIN PEAY	11/27/15	*	12	1-1	1.000	0-0	.000	0-0	.000	0	2	2	5.6	4	0	2	0	1	2	5.2	
OHIO	11/28/15	*	18	0-0	.000	0-0	.000	0-0	.000	1	3	4	5.3	1	1	1	0	0	0	4.3	
AIR FORCE	11/30/15	*	19	3-5	.600	0-0	.000	3-3	1.000	1	1	2	4.9	1	3	2	0	1	9	5.0	
at DREXEL	12/3/15	*	14	1-1	1.000	0-0	.000	0-2	.000	2	0	2	4.5	1	0	1	1	1	2	4.6	
ETSU	12/05/15	*	21	1-2	.500	0-0	.000	1-2	.500	1	2	3	4.3	1	0	1	0	0	3	4.4	
TROY	12/10/15	*	12	1-2	.500	0-0	.000	0-0	.000	0	4	4	4.3	2	0	1	0	0	2	4.2	
UT MARTIN	12/21/15	*	15	2-2	1.000	0-0	.000	2-2	1.000	1	6	7	4.5	3	0	0	0	1	6	4.4	
vs New Mexico State	12/29/15	*	13	1-1	1.000	0-0	.000	1-2	.500	1	3	4	4.5	0	0	0	0	1	3	4.3	
at Fordham	12/30/15	*	19	3-3	1.000	0-0	.000	1-2	.500	3	3	6	4.6	2	1	0	0	0	7	4.5	
at Ole Miss	1/3/16	*	18	4-5	.800	0-1	.000	0-0	.000	1	2	3	4.5	3	1	2	0	2	8	4.7	
SOUTH CAROLINA	01/07/16	*	11	1-1	1.000	0-0	.000	0-0	.000	3	1	4	4.5	2	0	1	0	0	2	4.5	
at Alabama	01/10/16	*	14	0-2	.000	0-0	.000	0-0	.000	1	0	1	4.3	3	0	2	0	0	0	4.3	
LSU	01/14/16	*	12	1-1	1.000	0-0	.000	0-0	.000	1	0	1	4.1	2	0	1	0	0	2	4.1	
at Tennessee	01/21/16		4	0-1	.000	0-0	.000	0-0	.000	3	0	3	4.0	0	1	0	0	0	0	3.9	
Totals		13	273	27-40	.675	0-1	.000	16-27	.593	30	42	72	4.0	36	8	20	2	9	70	3.9	



CHRISTA REED

No. 33 • 5-11 • Guard • Sophomore • Bay St. Louis, Miss. (Bay)

MAJOR: Undeclared.

PERSONAL: Daughter of Jeffrey and Tina Reed. ... Has three sisters: Stephanie (29), Kendra (27) and Tamara (25). ... Birthdate is Oct. 17, 1995. ... Was born in Gulfport, Miss.

REED'S CAREER STATS

Season	gp-gs	min/avg	Total		3-Point		F-Throws		Rebounds										Scoring	
			fg-fga	pct	fg-fga	pct	ft-fa	pct	off	def	tot	avg	pf	fo	ast	to	blk	stl	pts	avg
2014-15	15-4	280/18.7	30-78	.385	12-34	.353	18-24	.750	12	17	29	1.9	22	0	8	14	1	7	90	6.0
2015-16	18-18	469/26.1	69-152	.454	37-84	.440	24-30	.800	14	45	59	3.3	47	0	28	27	3	18	199	11.1
TOTAL	33-22	749/22.7	99-230	.430	49-118	.415	42-54	.778	26	62	88	2.7	69	0	36	41	4	25	289	8.8

REED'S SEASON STATS

Opponent	Date	gs	min	Total		3-Pointers		Free throws		Rebounds											
				fg-fga	pct	3fg-fga	pct	ft-fga	pct	off	def	tot	avg	pf	a	t/o	blk	stl	pts	avg	
MISS. VALLEY STATE	11/15/15	*	33	7-14	.500	4-10	.400	4-4	1.000	0	3	3	3.0	2	2	2	0	3	22	22.0	
at Dayton	11/18/15	*	33	2-9	.222	0-5	.000	0-0	.000	0	3	3	3.0	4	0	0	0	1	4	13.0	
at Green Bay	11/21/15	*	18	3-9	.333	3-5	.600	2-2	1.000	0	0	0	2.0	4	0	1	0	0	11	12.3	
PRESBYTERIAN	11/23/15	*	22	3-6	.500	2-5	.400	4-4	1.000	1	2	3	2.3	2	2	2	1	1	12	12.3	
AUSTIN PEAY	11/27/15	*	26	2-7	.286	2-5	.400	0-0	.000	0	4	4	2.6	4	1	2	0	0	6	11.0	
OHIO	11/28/15	*	21	4-8	.500	2-3	.667	0-0	.000	0	3	3	2.7	1	3	0	0	1	10	10.8	
AIR FORCE	11/30/15	*	25	4-7	.571	0-1	.000	1-1	1.000	1	2	3	2.7	0	4	0	0	1	9	10.6	
at DREXEL	12/3/15	*	26	4-8	.500	2-3	.667	0-0	.000	1	2	3	2.8	4	2	0	0	1	10	10.5	
ETSU	12/05/15	*	17	2-7	.286	1-3	.333	1-2	.500	0	3	3	2.8	2	0	0	0	2	6	10.0	
TROY	12/10/15	*	20	7-10	.700	5-6	.833	0-0	.000	2	6	8	3.3	4	2	3	1	3	19	10.9	
UT MARTIN	12/21/15	*	37	6-9	.667	2-4	.500	6-6	1.000	1	3	4	3.4	2	1	2	1	0	20	11.7	
vs New Mexico State	12/29/15	*	25	4-8	.500	3-5	.600	0-0	.000	1	3	4	3.4	3	3	1	0	1	11	11.7	
at Fordham	12/30/15	*	24	1-5	.200	0-4	.000	0-0	.000	1	3	4	3.5	3	1	3	0	1	2	10.9	
at Ole Miss	1/3/16	*	27	6-14	.429	2-5	.400	2-2	1.000	1	2	3	3.4	4	2	0	0	0	16	11.3	
SOUTH CAROLINA	01/07/16	*	29	2-6	.333	2-4	.500	0-0	.000	0	3	3	3.4	2	0	4	0	1	6	10.9	
at Alabama	01/10/16	*	35	5-12	.417	4-9	.444	3-6	.500	4	2	6	3.6	2	4	1	0	0	17	11.3	
LSU	01/14/16	*	30	6-8	.750	3-4	.750	0-1	.000	0	0	0	3.4	2	1	4	0	2	15	11.5	
at Tennessee	01/21/16	*	21	1-5	.200	0-3	.000	1-2	.500	1	1	2	3.3	2	0	2	0	0	3	11.1	
Totals		18	469	69-152	.454	37-84	.440	24-30	.800	14	45	59	3.3	47	28	27	3	18	199	11.1	



MIAYA SEAWRIGHT

No. 23 • Guard • Sophomore • Simpsonville, S.C. (Hillcrest)

MAJOR: Undeclared.

PERSONAL: Daughter of Willie Lee Seawright Jr. and Elizabeth Seawright. ... Has two siblings, Jalen Seawright (22) and Maegan Seawright (21). ... Her uncle, James Seawright, was an All-American linebacker the University of South Carolina and was drafted by the Buffalo Bills in the 11th round of the 1985 NFL Draft. ... Favorite Bible verse: "Cast all your anxiety on the Lord, because He cares for you." (1 Peter 5:7) ... Daughter of Kathy and Nate Dahlman ...

SEAWRIGHT’S CAREER STATS

Season	gp-gs	min/avg	Total		3-Point		F-Throws		Rebounds											Scoring	
			fg-fga	pct	fg-fga	pct	ft-fta	pct	off	def	tot	avg	pf	fo	ast	to	blk	stl	pts	avg	
2015-16	4-0	13/3.3	1-1	1.000	0-0	.000	0-0	.000	0	1	1	0.3	1	0	1	0	0	1	2	0.5	
TOTAL	4-0	13/3.3	1-1	1.000	0-0	.000	0-0	.000	0	1	1	0.3	1	0	1	0	0	1	2	0.5	

SEAWRIGHT’S SEASON STATS

Opponent	Date	gs	min	Total		3-Pointers		Free throws		Rebounds											
				fg-fga	pct	3fg-fga	pct	ft-fta	pct	off	def	tot	avg	pf	a	t/o	blk	stl	pts	avg	
MISS. VALLEY STATE	11/15/15		5	0-0	.000	0-0	.000	0-0	.000	0	1	1	1.0	1	1	0	0	0	0	0.0	
AIR FORCE	11/30/15		2	0-0	.000	0-0	.000	0-0	.000	0	0	0	0.5	0	0	0	0	1	0	0.0	
ETSU	12/05/15		2	0-0	.000	0-0	.000	0-0	.000	0	0	0	0.3	0	0	0	0	0	0	0.0	
TROY	12/10/15		4	1-1	1.000	0-0	.000	0-0	.000	0	0	0	0.3	0	0	0	0	0	2	0.5	
Totals			0	13	1-1	1.000	0-0	.000	0-0	.000	0	1	1	0.3	1	1	0	0	1	2	0.5



KENDALL SHAW

No. 35 • 6-4 • Center • RS Junior • Mont Belvieu (Barbers Hill)

MAJOR: Child studies and Medicine, Health and Society.

PERSONAL: Daughter of Robert and Tammy Shaw ... Has one brother, Keaton ... Favorite basketball player is Jayne Appel of the San Antonio Silver Stars ... Favorite sport other than basketball is football ... Chose Vanderbilt over Rice, Nebraska, Wisconsin, DePaul and TCU ... Born December 2, 1993, in Houston, Texas.

SHAW'S CAREER STATS

			Total		3-Point		F-Throws		Rebounds											Scoring	
Season	gp-gs	min/avg	fg-fga	pct	fg-fga	pct	ft-fa	pct	off	def	tot	avg	pf	fo	ast	to	blk	stl	pts	avg	
2012-13	23-0	212/9.2	31-67	.463	0-0	.000	18-27	.667	19	26	45	2.0	31	0	6	23	13	2	80	3.5	
2014-15	8-0	43/5.4	8-17	.471	1-1	1.000	1-3	.333	0	7	7	0.9	12	0	0	6	5	0	18	2.3	
2015-16	15-1	103/6.9	14-30	.467	0-0	.000	7-12	.583	6	15	21	1.4	21	0	3	12	7	1	35	2.3	
TOTAL	46-1	358/7.8	53-114	.465	1-1	1.000	26-42	.619	25	48	73	1.6	64	0	9	41	25	3	133	2.9	

SHAW'S SEASON STATS

Opponent	Date	gs	min	Total		3-Pointers		Free throws		Rebounds												pts	avg
				fg-fga	pct	3fg-fga	pct	ft-fga	pct	off	def	tot	avg	pf	a	t/o	blk	stl					
MISS. VALLEY STATE	11/15/15		16	2-6	.333	0-0	.000	2-2	1.000	2	8	10	10.0	1	0	1	2	0		6	6.0		
at Dayton	11/18/15	*	15	1-4	.250	0-0	.000	0-0	.000	0	2	2	6.0	4	1	2	0	0		2	4.0		
at Green Bay	11/21/15		1	0-0	.000	0-0	.000	0-0	.000	0	0	0	4.0	0	1	1	0	0		0	2.7		
PRESBYTERIAN	11/23/15		7	0-1	.000	0-0	.000	1-2	.500	0	0	0	3.0	0	0	0	1	1		1	2.3		
AUSTIN PEAY	11/27/15		6	1-2	.500	0-0	.000	0-0	.000	0	1	1	2.6	2	0	2	0	0		2	2.2		
OHIO	11/28/15		2	0-0	.000	0-0	.000	0-0	.000	0	0	0	2.2	1	0	0	0	0		0	1.8		
AIR FORCE	11/30/15		7	0-2	.000	0-0	.000	1-2	.500	1	0	1	2.0	4	0	1	1	0		1	1.7		
ETSU	12/05/15		7	1-1	1.000	0-0	.000	0-0	.000	1	0	1	1.9	2	0	2	0	0		2	1.8		
TROY	12/10/15		10	3-3	1.000	0-0	.000	0-2	.000	0	1	1	1.8	0	1	0	1	0		6	2.2		
vs New Mexico State	12/29/15		3	1-1	1.000	0-0	.000	0-0	.000	0	0	0	1.6	2	0	1	0	0		2	2.2		
at Fordham	12/30/15		2	0-0	.000	0-0	.000	0-0	.000	0	1	1	1.5	1	0	2	0	0		0	2.0		
SOUTH CAROLINA	01/07/16		12	3-4	.750	0-0	.000	3-4	.750	1	1	2	1.6	1	0	0	1	0		9	2.6		
at Alabama	01/10/16		6	1-3	.333	0-0	.000	0-0	.000	0	1	1	1.5	2	0	0	0	0		2	2.5		
LSU	01/14/16		5	1-2	.500	0-0	.000	0-0	.000	1	0	1	1.5	1	0	0	1	0		2	2.5		
at Tennessee	01/21/16		4	0-1	.000	0-0	.000	0-0	.000	0	0	0	1.4	0	0	0	0	0		0	2.3		
Totals			1	103	14-30	.467	0-0	.000	7-12	.583	6	15	21	1.4	21	3	12	7	1	35	2.3		



MINTA SPEARS

No. 23 • Guard • Junior • Bullard, Texas (Texas Tech)

MAJOR: Leadership and Organizational Performance

PERSONAL: After transferring from Texas Tech, Spears was accepted into grad school at Vanderbilt and joined the Commodore WBB program in May of 2015. As a grad student, she is eligible to play for VU this season, and has two years of eligibility remaining Played in 62 games -- including making 51 starts -- over the past two seasons at Texas Tech, where she averaged 7.4 points, 2.2 rebounds and 1.9 assists per game. ...

SPEARS' CAREER STATS AT VANDERBILT

Season	gp-gs	min/avg	Total		3-Point		F-Throws		Rebounds											Scoring	
			fg-fga	pct	fg-fga	pct	ft-fa	pct	off	def	tot	avg	pf	fo	ast	to	blk	stl	pts	avg	
2015-16	18-18	601/33.4	29-75	.387	12-40	.300	30-34	.882	4	43	47	2.6	40	1	83	45	3	22	100	5.6	
TOTAL	18-18	601/33.4	29-75	.387	12-40	.300	30-34	.882	4	43	47	2.6	40	1	83	45	3	22	100	5.6	

SPEARS' SEASON STATS

Opponent	Date	gs	min	Total		3-Pointers		Free throws		Rebounds											
				fg-fga	pct	3fg-fga	pct	ft-fga	pct	off	def	tot	avg	pf	a	t/o	blk	stl	pts	avg	
MISS. VALLEY STATE	11/15/15	*	28	2-4	.500	1-2	.500	0-0	.000	0	3	3	3.0	1	7	1	0	2	5	5.0	
at Dayton	11/18/15	*	33	1-3	.333	0-2	.000	2-2	1.000	1	3	4	3.5	4	4	2	0	0	4	4.5	
at Green Bay	11/21/15	*	38	2-6	.333	0-2	.000	0-0	.000	1	1	2	3.0	1	3	3	0	0	4	4.3	
PRESBYTERIAN	11/23/15	*	40	2-6	.333	1-3	.333	3-3	1.000	0	2	2	2.8	2	4	1	0	1	8	5.3	
AUSTIN PEAY	11/27/15	*	38	1-2	.500	0-1	.000	0-0	.000	0	2	2	2.6	1	14	0	0	0	2	4.6	
OHIO	11/28/15	*	30	4-6	.667	1-3	.333	2-2	1.000	0	2	2	2.5	2	1	3	0	0	11	5.7	
AIR FORCE	11/30/15	*	23	1-2	.500	0-0	.000	0-0	.000	0	2	2	2.4	3	1	4	0	2	2	5.1	
at DREXEL	12/3/15	*	36	0-3	.000	0-2	.000	4-4	1.000	0	3	3	2.5	2	6	3	0	0	4	5.0	
ETSU	12/05/15	*	35	3-5	.600	2-3	.667	0-0	.000	0	3	3	2.6	1	5	4	0	4	8	5.3	
TROY	12/10/15	*	30	0-1	.000	0-1	.000	2-2	1.000	1	2	3	2.6	1	7	2	1	5	2	5.0	
UT MARTIN	12/21/15	*	22	0-0	.000	0-0	.000	0-0	.000	0	1	1	2.5	5	3	5	1	0	0	4.5	
vs New Mexico State	12/29/15	*	31	2-4	.500	1-2	.500	1-3	.333	0	1	1	2.3	1	7	5	0	2	6	4.7	
at Fordham	12/30/15	*	29	3-5	.600	3-4	.750	2-2	1.000	1	3	4	2.5	3	0	1	0	1	11	5.2	
at Ole Miss	1/3/16	*	40	2-4	.500	0-2	.000	5-6	.833	0	1	1	2.4	1	5	5	0	1	9	5.4	
SOUTH CAROLINA	01/07/16	*	39	1-9	.111	0-5	.000	2-2	1.000	0	2	2	2.3	4	4	3	0	0	4	5.3	
at Alabama	01/10/16	*	34	1-4	.250	1-3	.333	5-6	.833	0	7	7	2.6	4	4	1	0	1	8	5.5	
LSU	01/14/16	*	40	4-8	.500	2-5	.400	0-0	.000	0	4	4	2.7	1	3	0	1	3	10	5.8	
at Tennessee	01/21/16	*	35	0-3	.000	0-0	.000	2-2	1.000	0	1	1	2.6	3	5	2	0	0	2	5.6	
Totals		18	601	29-75	.387	12-40	.300	30-34	.882	4	43	47	2.6	40	83	45	3	22	100	5.6	



MARQU'ES WEBB

No. 22 • 6-1 • Forward • Junior • Hoover, Ala. (Hoover)

ACADEMICS: Sociology

PERSONAL: Daughter of LaTangela Sanderson ... Has two siblings, Bianca and Marcus ... Born March 23, 1995, in Montgomery, Ala., ... Favorites include the Los Angeles Sparks (WNBA team), Nneka Ogwumike (WNBA Player), ice cream (snack), The Land Before Time (movie) and Nicki Minaj (musician) ... Wears 22 at Vanderbilt because it is her favorite number.

WEBB'S CAREER STATS

Season	gp-gs	min/avg	Total		3-Point		F-Throws		Rebounds											Scoring	
			fg-fga	pct	fg-fga	pct	ft-fa	pct	off	def	tot	avg	pf	fo	ast	to	blk	stl	pts	avg	
2013-14	31-18	485/15.6	84-155	.542	0-1	.000	53-90	.589	44	80	124	4.0	98	10	24	66	3	10	221	7.1	
2014-15	27-17	534/19.8	78-131	.595	0-0	.000	61-98	.622	51	82	133	4.9	78	3	18	54	9	16	217	8.0	
2015-16	18-2	251/13.9	45-78	.577	0-0	.000	23-45	.511	41	49	90	5.0	43	2	6	36	7	9	113	6.3	
TOTAL	76-37	1270/16.7	207-364	.569	0-1	.000	137-233	.588	136	211	347	4.6	219	15	48	156	19	35	551	7.3	

WEBB'S SEASON STATS

Opponent	Date	gs	min	Total		3-Pointers		Free throws		Rebounds											
				fg-fga	pct	3fg-fga	pct	ft-fa	pct	off	def	tot	avg	pf	a	t/o	blk	stl	pts	avg	
MISS. VALLEY STATE	11/15/15	*	15	2-6	.333	0-0	.000	4-6	.667	2	2	4	4.0	1	0	3	3	1	8	8.0	
at Dayton	11/18/15		7	1-5	.200	0-0	.000	0-2	.000	2	2	4	4.0	2	1	0	0	0	2	5.0	
at Green Bay	11/21/15		4	0-0	.000	0-0	.000	0-0	.000	0	1	1	3.0	1	0	2	1	0	0	3.3	
PRESBYTERIAN	11/23/15		6	2-4	.500	0-0	.000	0-0	.000	2	1	3	3.0	0	0	2	0	0	4	3.5	
AUSTIN PEAY	11/27/15		19	5-7	.714	0-0	.000	2-3	.667	3	4	7	3.8	2	1	2	0	0	12	5.2	
OHIO	11/28/15		20	5-10	.500	0-0	.000	9-9	1.000	6	4	10	4.8	4	0	4	0	0	19	7.5	
AIR FORCE	11/30/15		12	5-5	1.000	0-0	.000	1-1	1.000	2	3	5	4.9	3	1	2	0	2	11	8.0	
at DREXEL	12/3/15		10	1-1	1.000	0-0	.000	0-0	.000	2	2	4	4.8	2	0	2	0	0	2	7.3	
ETSU	12/05/15		11	2-2	1.000	0-0	.000	0-0	.000	1	0	1	4.3	3	0	3	0	1	4	6.9	
TROY	12/10/15		12	3-4	.750	0-0	.000	2-4	.500	4	1	5	4.4	0	1	1	0	0	8	7.0	
UT MARTIN	12/21/15		14	2-3	.667	0-0	.000	1-5	.200	1	3	4	4.4	2	0	1	0	1	5	6.8	
vs New Mexico State	12/29/15		16	8-11	.727	0-0	.000	1-3	.333	2	4	6	4.5	2	0	1	0	0	17	7.7	
at Fordham	12/30/15		14	2-5	.400	0-0	.000	0-0	.000	2	2	4	4.5	2	0	3	0	0	4	7.4	
at Ole Miss	1/3/16		21	0-0	.000	0-0	.000	0-4	.000	3	5	8	4.7	3	1	5	0	1	0	6.9	
SOUTH CAROLINA	01/07/16		17	3-5	.600	0-0	.000	1-1	1.000	0	3	3	4.6	5	0	1	0	0	7	6.9	
at Alabama	01/10/16		12	0-1	.000	0-0	.000	0-0	.000	3	2	5	4.6	2	1	0	0	0	0	6.4	
LSU	01/14/16		14	3-5	.600	0-0	.000	1-4	.250	1	2	3	4.5	4	0	2	2	1	7	6.5	
at Tennessee	01/21/16	*	27	1-4	.250	0-0	.000	1-3	.333	5	8	13	5.0	5	0	2	1	2	3	6.3	
Totals			2	251	45-78	.577	0-0	.000	23-45	.511	41	49	90	5.0	43	6	36	7	9	113	6.3

2014-15 INDIVIDUAL BIOS

MORGAN BATEY

2015-16 (Senior)

2014-15 (JUNIOR): Put together another strong season that included leading the team in rebounding (5.2 rpg) and ranking second in scoring (8.5 ppg). ... Saw action in all 31 games, and was the only player on the VU roster to start every game of the regular season. ... Reached double figures in 13 games, and posted three double-doubles. ... Notable games: Went 8-of-13 from the floor and scored 17 points with five rebounds in overtime win over Florida on Feb. 19. ... Had 12 points and four rebounds in loss to Kentucky on Feb. 8. ... Scored 14 points, including the game-sealing free throws with five seconds remaining, in win over Ole Miss on Feb. 5. ... Went 7-of-8 from the floor and scored a team-high 16 points in win over Alabama-Huntsville on Jan. 15. ... Matched her career-high with 18 points and had 10 rebounds for her third double-double of the season in win over Mississippi State on Jan. 11. ... Scored eight points and pulled down six rebounds in win over James Madison on Dec. 29. ... Had 13 points and six rebounds in loss to Dayton on Dec. 21. ... Scored eight points and pulled down a team-high seven rebounds in loss to Marquette on Dec. 18. ... Had her second consecutive double-double with 14 points and a career-high 16 rebounds in win over Elon on Dec. 14. ... Scored a team-high 15 points and tied for team-high honors with 10 rebounds in win over MVSU on Dec. 3. ... Had 10 points and four rebounds in loss to Arizona State on Nov. 30. ... Narrowly missed a double-double, finishing with 10 points and nine rebounds in win over St. Louis on Nov. 24. ... Had 11 points and four rebounds in overtime win against Green Bay on Nov. 17. ... Had 15 points and five rebounds in season-opening win over Belmont on Nov. 14.

2013-14 (SOPHOMORE): Produced a fine sophomore campaign, including leading the team in rebounding (5.3 per game) and reaching double figures in scoring in seven games. ... Saw action in all 31 games. ... Was inserted into the starting lineup on Dec. 21 and remained there the rest of the season. ... Had eight points on 4-of-5 shooting in NCAA Tournament first-round loss to Arizona State on March 22. ... Produced her second career double-double with 12 points and 11 rebounds in loss to Florida on Feb. 27. ... Scored a career-high 18 points and had six rebounds in win over Arkansas on Feb. 20. ... Had first career double-double with 13 points and 11 rebounds in loss to Miss. State on Feb. 16. ... Scored a career-high 17 points, including hitting the game-winning free throws with two seconds remaining, in win over Texas A&M on Feb. 2. ... Scored 11 points for the second straight game and pulled down four rebounds in win over LSU on Jan. 19. ... Matched her career-highs with 11 points and three steals in win over Ole Miss on Jan. 16. ... Had nine points and eight rebounds in win over Tennessee on Jan. 12. ... Pulled down a team-high nine rebounds and scored five points in win over Auburn on Jan. 9. ... Pulled down a team-high 10 rebounds and scored five points in win over UAB on Dec. 30. ... Making her first start of the season, posted a career-high six assists in win over UNC Asheville on Dec. 21. ... Scored 10 points (going 3-of-3 from the floor and 4-of-4 at the line) and pulled down seven rebounds during a win over Dayton on Nov. 24.

2012-13 (FRESHMAN): Played in all but two games, averaging 2.4 points and 3.1 rebounds per game. ... Started all four postseason games. ... Played her best down the stretch, averaging 4.2 points and 6.2 rebounds over the last 10 games. ... Averaged 5.5 rebounds in two games at first career SEC Tournament. ... Had nine points and nine rebounds in final regular season game at No. 11/11 Georgia. ... Pulled down 11 rebounds in upset of No. 10/13 Texas A&M. ... Posted seven points and five rebounds in win at Florida. ... Scored 10 points and grabbed six rebounds at No. 12/10 Tennessee. ... Recorded career highs in rebounds (10), assists (4) and steals (3) against Missouri. ... Scored eight points in her first-career SEC game against Mississippi State. ... Had first career double-digit game against Austin Peay, scoring 11 points and hitting team's only two three-pointers.

HIGH SCHOOL (Pace Academy): Ranked No. 54 nationally by ESPN HoopGurlz, as well as the 21st-ranked guard. ... Scored 2,274 career points, while also setting the Georgia career rebounding record at 1,307. ... Four-time team MVP and three-time co-captain at Pace for Regina Tate. ... Averaged 22 points and 12 rebounds per game as a senior, while being named the Georgia Sports Writers Association Class A Player of the Year. ... As a junior, led Pace to the state championship game for the first time since 1984. ... Also that year, set state record for rebounds in a season (464). ... Earned Atlanta Journal Constitution Class A Player of the Year honors as a junior. ... Reached the 1,000 career point mark as a sophomore. ... Played AAU basketball for AOT/Wallace Prather Celtics.

ACADEMICS: Majoring in Medicine, health and society.

PERSONAL: Daughter of Cherie and Sam Batey. ... Has one sister, Jordan, who is a junior on the tennis team at Temple. ... Favorite basketball player is Maya Moore. ... Favorite movie is The Blind Side. ... Chose Vanderbilt over Memphis, Kansas and Miami. ... Born on March 24, 1994 in Atlanta.

RACHEL BELL

2015-16 (Sophomore)

2014-15 (FRESHMAN): Produced a fine freshman season, averaging 7.0 points and 2.0 rebounds per game. ... Saw action in 30 of the team's 31 games (missed one due to illness), including making four starts. ... Reached double figures in scoring in 10 games. ... Shot 83 percent from the foul line, making 35 of 42 attempts. ... Notable games: Had 13 points and three assists in loss to Auburn on Feb. 26. ... Scored 15 points, going 3-of-6 from 3-point range, in overtime win over Florida on Feb. 19. ... Had eight points and matched her season-high with a team-leading six rebounds in loss to Kentucky on Feb. 8. ... Scored a team-high 16 points with three rebounds in the win over Ole Miss on Feb. 5. ... Had 12 points in loss to Florida on Feb. 1. ... Tied for team-high scoring honors with 11 points, including going 3-of-4 from 3-point range, in win over Arkansas on Jan. 22. ... Had seven points and four rebounds in loss to Georgia on Jan. 18. ... Posted 14 points and six rebounds in win over James Madison on Dec. 29. ... Had 11 points and six rebounds in loss to Dayton on Dec. 21. ... Scored 10 points on 5-of-6 shooting in win over MVSU on Dec. 3. ... Poured in a career-high 18 points while going 7-of-10 from the floor, including 4-of-6 from 3-point range, in win over St. Louis on Nov. 24. ... Had six points and two rebounds in her Commodore debut during the season-opening win over Belmont on Nov. 14.

HIGH SCHOOL (Creek Wood): 2014 and 2012 Class AA Miss Basketball Finalist. ... Averaged 24.8 points and 6.2 rebounds per game. ... Helped lead head coach Tom Mullinicks and her team to the state semifinals with 34-4 record. ... McDonald's All-American nominee. ... Gatorade Player of the Year nominee. ... Averaged 3.2 steals and 2.0 assists per game. ... Scored 38 points, going 13-of-27 from the floor, and pulled down 10 rebounds in state tournament quarterfinals. ... Named to District-11 AA All District and All Tournament teams in all four years. ... Named District-11 AA MVP during sophomore, junior and senior seasons and named District-11 AA All Tournament MVP her junior and senior years. ... Named to Region 6-AA All Tournament team during sophomore, junior and senior seasons and named Region 6-AA Tournament MVP as a senior. ... Named Creek Wood HS MVP for three straight years. ... As a junior, named as a Class AA TSSAA Miss Basketball nominee. ... Ranked No. 59 overall (and No. 7 at her position) by Prospects Nation.

PERSONAL: Daughter of Patrick and Linda Bell. ... Has three brothers and one sister: Caitlin (22), Nicholas (29), Michael (28) and Andy (27). ... Birthdate is April 2, 1996. ... Was born in Nashville. ... Major is undecided.

ACADEMICS: Major is undecided.

2014-15 INDIVIDUAL BIOS

REBEKAH DAHLMAN

2015-16 (RS Sophomore)

2014-15 (RS Freshman): Named to SEC's All-Freshman Team after a strong campaign in which she averaged a team-high 10.3 points per game while seeing action in 31 games (29 starts). ... Also led the Commodores in minutes played (30.4 per game), 3-pointers made (43) and free throws made (71). ... Ranked second on the team in steals (36 total) and third in rebounding (4.0 rpg). ... Reached double figures in scoring in a team-high 14 games, and posted two double-doubles. ... Notable games: Produced a double-double with 10 points and 10 rebounds in loss to Kentucky in second round of SEC Tournament on March 5. ... Scored 16 points on 6-of-9 shooting in win over Alabama in first round of SEC Tournament on March 4. ... Pulled down nine rebounds and scored eight points in loss to Missouri on Feb. 22. ... Had a team-high 18 points and went 5-of-8 from 3-point range while playing all 45 minutes in overtime win over Florida on Feb. 19. ... Scored a team-high 13 points in loss to South Carolina on Feb. 15. ... Set a new season high with a team-leading 20 points in loss to Kentucky on Feb. 8. ... Scored 13 points and dished out a career-high six assists in loss to Florida on Feb. 1. ... Scored a team-high 17 points in loss to Georgia on Jan. 18. ... Had 17 points and eight rebounds in win over Mississippi State on Jan. 11. ... Scored 12 points, including going 7-of-8 from the foul line, in win over James Madison on Dec. 29. ... Tied for team-high scoring honors with 13 points in road loss to Marquette on Dec. 18. ... Scored 13 points and pulled down seven rebounds in win over Elon on Dec. 14. ... Scored a team-high 19 points in loss to Arizona State on Nov. 30. ... Had a double-double and set new season highs 17 points and 10 rebounds in win over Minnesota on Nov. 28. ... Recorded team-highs with 18 points and nine rebounds in road win over Wisconsin on Nov. 20. ... Scored eight points and pulled down 10 rebounds in season-opening win over Belmont on Nov. 14.

2013-14 (Freshman): Missed final 22 games of the season after being diagnosed with a clot (which required multiple procedures) in December. ... Was in the starting lineup for Vanderbilt's first nine games and averaged 11.4 points per game. ... Was leading the SEC and ranked 10th in the nation in 3-point percentage at 51.4 percent (18-of-35) at the time of her injury. ... Had six points, two assists and two steals in win over ETSU on Dec. 3. ... Scored six points against both Elon and Wisconsin during the Vanderbilt Thanksgiving Tournament (Nov. 29-30), and had eight rebounds in win over the Badgers in the title game. ... Scored a team-high 17 points and secured five rebounds in win over Dayton on Nov. 24. ... Had seven points, four rebounds and three assists in a road loss to Duke on Nov. 21. ... Scored 12 points in loss to Marquette on Nov. 17. ... Had eight points in win over Delaware State on Nov. 14. ... Had 18 points, including reeling off 14 straight in the second half, in win over Western Kentucky on Nov. 11. ... Scored a team-best 23 points against Appalachian State on Nov. 8, marking the highest total in a debut game by a Vanderbilt freshman in the program's history, surpassing the previous record of 22 points by Barbara Brackman in 1981.

HIGH SCHOOL (Braham Area): McDonald's All-American ... 2013 Minnesota Miss Basketball ... Two-time Gatorade Player of the Year in Minnesota ...

First player in Minnesota history to score over 5,000 career points, finishing with 5,060 ... As a senior, led Braham Area High School to Class 2-A championship game, where the Bombers fell, 60-59, in their only loss of the season ... Averaged 35.3 points, 9.8 rebounds and 6.4 assists per game as a senior, earning Associated Press Minnesota Player of the Year honors ... Helped Braham and coach Tim Malone to state title as a sophomore ... Four-time First Team All-State selection (Associated Press) ...

Selected to USA Basketball U-19 team trials ... Played AAU for North Tartan and coach Gerard Coury ... Ranked nationally 16th overall and fourth at guard by ESPN HoopGurlz with a five-star rating and grade of 96.

MAJOR: Sociology.

PERSONAL: Comes from a rich basketball heritage ... Grandfather, John Kundla, is in the Naismith Basketball Hall of Fame for his work as head coach of the NBA's Minneapolis Lakers and the University of Minnesota men's basketball team ... Brother, Isaiah, set Minnesota prep scoring record before playing at Michigan State and advancing to two final fours ... Brother, Noah, owns the Minnesota high school rebounding record, played collegiately at Wofford and is currently playing professionally in Macedonia ... Daughter of Kathy and Nate Dahlman ... Has five siblings: Isaiah, Noah, Jonah, Hannah and Zach ... Born August 11, 1994, in Cambridge, Minn. ... Wears number one because no one else at Vanderbilt previously had the number ... Favorites include Maya Moore (WNBA Player), the Minnesota Lynx (WNBA Team), Beyonce (musician), chocolate (snack) and Despicable Me (movie). ... Bucket list includes sky diving, qualifying for the Olympics and traveling around the world.

MYKA DANCY

2015-16 (Sophomore)

MAJOR: Undecided

HIGH SCHOOL: Played basketball at Antioch High. ... Was a member of the All-District Basketball Team in 2014 and won the A.D. Hancock/Walter Nipper Sportsmanship Award. ... Was also a two-time state track gold medalist.

PERSONAL: Daughter of Michael Dancy (Deceased) and Tonna Dancy. ... Has two siblings, Corey Brown (33) and Chelsea Dancy (21). Her late father played at Tennessee State University 1981-83.

2014-15 INDIVIDUAL BIOS

KRISTEN GAFFNEY

2015-16 (RS Junior)

2014-15 (RS Sophomore): Saw action in 24 games, including making five starts, after returning from knee injuries that caused her to miss her entire first season with the team and most of her second. ... Shot 50.9 percent from the floor for the season and reached double-figures in scoring in seven games. ... Notable games: Scored the game-winning basket with six seconds remaining and finished with four points and four rebounds in win over Ole Miss on Feb. 5. ... Tied for team-high honors with 11 points and added four assists and three rebounds in win over Arkansas on Jan. 22. ... Had 13 points and five rebounds in loss to Dayton on Dec. 21. ... Shared team-high honors with 13 points in loss to Marquette on Dec. 18. ... Had 10 points and four rebounds in win over Elon on Dec. 14. ... Scored a career-high 15 points, going 6-of-6 from the floor, in loss to Arizona State on Nov. 30. ... Set a new career high with 12 points and pulled down five rebounds in loss to No. 3 UConn on Nov. 29. ... Missed game against Minnesota on Nov. 28 with injury. ... Had four points and five rebounds in win over St. Louis on Nov. 24. ... Came off the bench to set new career highs in points (12), field goals (five) and minutes played (32) in road win over Wisconsin on Nov. 20.

2013-14 (RS FRESHMAN): After sitting out most of the season with a knee injury, she made her college debut on Feb. 27 against Florida and played in VU's final four games of the season. ... Averaged 18.8 minutes of playing time in the four games, compiling 12 points and 18 rebounds. ... Had six points and five rebounds in NCAA Tournament first-round loss to Arizona State on March 22. ... Pulled down seven rebounds in SEC Tournament loss to Georgia on March 6. ... Logged 29 minutes of playing time and finished with six points, five rebounds and three assists in loss to Kentucky on March 2. ... Made her Commodore debut against Florida on Feb. 27. Played five minutes and pulled down two rebounds and dished out two assists in the loss.

2012-13 (FRESHMAN): Missed season with knee injury.

HIGH SCHOOL (Green Hope): Parade All-American in 2012 ... Named North Carolina Player of the Year as a senior by the Associated Press, N.C. Basketball Coaches Association, Rivals.com, and Raleigh News Observer ... Scored 2,671 career points, seventh in North Carolina history ... Led team to a record of 105-6 over final three seasons at Green Hope, playing for coach Mike Robinson ... Averaged 27.5 points and 8.9 rebounds per game as a senior ... Scored most points during a sophomore season in state history (831), breaking a mark previously held by Connecticut All-American Shea Ralph.

ACADEMICS: Majoring in Medicine, Health and Society.

PERSONAL: Daughter of Jim and Peggy Gaffney ... Has one brother, Jimmy ... Favorite basketball player is Michael Jordan ... Favorite sport other than basketball is beach volleyball ... Born December 11, 1993, in Westchester, N.Y

JASMINE JENKINS

2015-16 (Senior)

2014-15 (JUNIOR): Saw action in all 31 games, including making 22 starts and averaging 3.9 points per game. ... Ranked second on the team, and 15th in the SEC, in assists per game at 2.7. ... Notable games: Scored 12 points and had four rebounds in loss to Kentucky in second round of SEC Tournament on March 5. ... Had seven points and set new career highs in assists (seven), steals (four) and minutes played (42) in overtime win over Florida on Feb. 19. ... Scored a season-high 11 points on 5-of-7 shooting in win over Ole Miss on Feb. 5. ... Came up clutch in the final minute of win over James Madison on Dec. 29 by scoring the go-ahead basket with 51 seconds remaining and later making the game-sealing free throw. ... Had seven points and six rebounds in loss to Dayton on Dec. 21. ... Had six assists and four rebounds in win over Elon on Dec. 14.

2013-14 (SOPHOMORE): Saw action in all 31 games, including making two starts, and averaged 5.3 points and 2.3 rebounds per game. ... Had six points and four rebounds in win over Texas A&M on Feb. 2. ... Scored eight points in loss to Missouri on Jan. 30. ... Had eight points and matched a career high with seven rebounds in loss to South Carolina on Jan. 26. ... Produced six points and a career-high three steals in win over Ole Miss on Jan. 16. ... Scored 12 points with four assists in loss to South Carolina on Jan. 5. ... Had five points in win over Georgia on Jan. 2. ... Had 12 points and six assists off the bench in win over UNC Asheville on Dec. 21. ... Scored six points and had two assists in win over Hartford on Dec. 15. ... Had four points, seven rebounds and three assists in win over ETSU on Dec. 3. ... Went 8-of-8 at the foul line and scored 10 points in loss to Marquette on Nov. 17. ... Had 10 points, five rebounds, three assists and two rebounds in win over Western Kentucky on Nov. 11. ... Poured in a career-high 19 points and added a career-high six assists against Appalachian State on Nov. 8.

2012-13 (FRESHMAN): Played in 25 games, averaging 2.3 points and 2.4 rebounds. ... Recorded six points, four rebounds and four assists in first-career SEC Tournament game versus Missouri. ... Had four points and four rebounds in upset of No. 10/13 Texas A&M. ... Scored seven points in win at Florida. ... Posted 10 points and six rebounds in win over Missouri. ... Recorded five rebounds and four assists off the bench in win over Ole Miss. ... Scored six points, grabbed six rebounds and dished out four assists against Austin Peay. ... Dished out a pair of assists and scored two points in her first career game.

HIGH SCHOOL (East Hall): Ranked No. 87 in the nation by ESPN HoopGurlz, as well as the 14th-rated point guard in the class ... Averaged 16.5 points, 6.2 rebounds, 4.2 assists and 2.0 steals per games as a senior at East Hall High School, playing for coach Joey Rider ... Gainesville (Ga.) Times Girls Player of the Year as a senior ... Selected to participate in American Family Insurance High School 3-Point Contest ... Made game-winning three-point play with eight seconds remaining to win regional championship ... Four-time All-Area selection by Gainesville Times ... Three-time team MVP ... Reached the 1,000 career point mark as a junior ... Named MVP of Georgia Juniors North-South All-Star game after scoring 23 points to lead North to an overtime win ... Played AAU basketball with EOTO and the Georgia Ice.

ACADEMICS: Majoring in human and organizational development.

PERSONAL: Daughter of Sharon Jenkins-Jackson and Timmy Jenkins ... Has four siblings, Diamond Casper, Noah Jenkins, Isaiah Jenkins and Timothy Jenkins ... Favorite WNBA team is the Minnesota Lynx and favorite player is Sue Bird ... Favorite movie is Finding Nemo ... Chose Vanderbilt over Western Carolina and Auburn ... Born July 4, 1994, in Gainesville, Ga.

2014-15 INDIVIDUAL BIOS

RAYTE'A LONG

2015-16 (Senior)

2014-15 (JUNIOR): Selected as Vanderbilt's recipient of the A.D. Hancock-Walter Nipper Sportsmanship Award. ... Provided depth off the bench while seeing action in 22 games, averaging 1.4 points and 1.3 points per game. ... Notable games: Scored four points and pulled down four rebounds while logging 15 minutes of playing time in SEC Tournament first-round win over Alabama on March 4. ... Scored two points and had three rebounds in loss to Georgia on Jan. 18. ... Had two points and three rebounds in loss to Dayton on Dec. 21. ... Had two points, two assists and an assist in win over St. Louis on Nov. 24. ... Recorded one steal in road win over Wisconsin on Nov. 20. ... Had one rebound in overtime win against Green Bay on Nov. 17. ... Had four points and two rebounds in season-opening win over Belmont on Nov. 14.

2013-14 (SOPHOMORE): Provided depth in the post, playing in 26 games and averaging 1.8 points and 2.3 rebounds per game. ... Scored four points in win over Texas A&M on Feb. 2. ... Played six minutes in loss to Missouri on Jan. 30. ... Had three rebounds and two points in win over Auburn on Jan. 9. ... Had two points and five rebounds in loss to South Carolina on Jan. 5. ... Pulled down three rebounds in four minutes of action in win over Georgia on Jan. 2. ... Had six points in 12 minutes of action in win over James Madison on Dec. 18. ... Scored four points in win over Hartford on Dec. 15. ... Notched a pair of rebounds in 10 minutes of action in a road loss to Duke on Nov. 21. ... Had five points and two rebounds in win over Delaware State on Nov. 14. ... Set a new career high by pulling down nine rebounds in win over Western Kentucky on Nov. 11. ... Scored a career-high eight points against Appalachian State on Nov. 8.

2012-13 (FRESHMAN): Played in 25 games, averaging 1.2 points and 1.3 rebounds. ... Grabbed four rebounds and hit two late free throws to help seal the victory at Florida. ... Pulled down five rebounds at No. 12/10 Tennessee. ... Recorded eight points and grabbed five rebounds in her first SEC game against Mississippi State, both career highs. ... Scored four points at a key stretch last in the first half at Western Kentucky. ... Hit all four foul shots against Tennessee Tech. ... Had one point and one rebound against Austin Peay. ... Scored two points in her first career action against UAB.

HIGH SCHOOL (Chaminade): Averaged 15 points and eight rebounds a game as a senior at Chaminade Julianne High School ... Played for Mandy Myers and Alan Hoskins at Chaminade ... earned First Team All-Area and All-Conference honors as a senior ... Helped Chaminade to district and conference championships three-straight seasons (2010-12) ... Averaged 11.9 points and 7.9 rebounds as a junior, while helping Chaminade to the Ohio District II regional finals ... Played AAU basketball for the Ohio Glory.

ACADEMICS: Majoring in Interdisciplinary: Technology, Management and Society.

PERSONAL: Daughter of Kevin Long and Rachel Thompson ... Has one brother, Kevin ... Favorite basketball player is Steve Nash ... Favorite sport other than basketball is track and field ... Favorite movie is The Lion King ... Chose Vanderbilt over Hampton and Houston ... Born January 3, 1994, in Dayton, Ohio.

CHRISTA REED

2015-16 (Sophomore)

2014-15 (FRESHMAN): Averaged 6.0 points and 1.9 rebounds per game before missing the final 15 games of the season with an ankle injury. ... Notable games: Led the team with 13 points in loss to Tennessee on Jan. 5. ... Had eight points and four rebounds in loss to Marquette on Dec. 18. ... Scored nine points and pulled down two rebounds in loss to Arizona State on Nov. 30. ... Went 7-of-10 from the floor while scoring a career-high 17 points in loss to No. 3 UConn on Nov. 29. ... Had nine points and two assists in win over Minnesota on Nov. 28. ... Had nine points and three rebounds in win over St. Louis on Nov. 24. ... Had 12 points and three rebounds while making her first career start. ... Had one rebound in season-opening win over Belmont on Nov. 14.

HIGH SCHOOL (Bay): Averaged 26.2 points, 7 rebounds, 1.7 assists and 2.2 steals as a senior. ... McDonald's All-American nominee. ... Was named to Clarion Ledger's Dandy Dozen as a junior and a senior. ... Selected to the Mississippi/Alabama All-Star game as a senior. ... Selected for the Mississippi North/South All-Star game in the summer before her senior year. ... Made 120 three-pointers as a senior and helped lead team to Class AAAA title game. ... Went 14-for-14 from 3-point range during one regular-season game to tie the state record for 3s in a game. ... Shot 59 percent from 3-point range and 88 percent from the foul line. ... Led team to a 31-4 record and District Champs, South State Champs, and State Runner-up (lost by one point in finals). ... Named All-State First Team 2011-2014 and District MVP 2012-2014. ... Selected by Sun Herald as Player of the Year for three consecutive years. ... 2013 Gatorade Player of the Year. ... As a junior, helped lead head coach Debbie Triplett's team to a 36-0 record and a state championship. ... Ranked No. 51 nationally by ESPN HoopGurlz with a five-star rating and grade of 96. ... Ranked No. 74 overall (and No. 9 at her position) by Prospects Nation.

PERSONAL: Daughter of Jeffrey and Tina Reed. ... Has three sisters: Stephanie (29), Kendra (27) and Tamara (25). ... Birthdate is Oct. 17, 1995. ... Was born in Gulfport, Miss. ... Majoring in pre-pharmacy.

ACADEMICS: Major is undecided.

2014-15 INDIVIDUAL BIOS

MIAYA SEAWRIGHT

2015-16 (Sophomore)

MAJOR: Undecided

HIGH SCHOOL: Was a prep standout at Hillcrest High. ... Averaged 15.1 points, 6.3 steals and 6.1 assists as a senior and averaged 18.1 points, 4.8 steals and 2.6 assists as a junior. ... Prep honors include being a two-time member of the All Region 1- AAAA team and being named to the All Greenville County First Team as a senior.

PERSONAL: Daughter of Willie Lee Seawright Jr. and Elizabeth Seawright. ... Has two siblings, Jalen Seawright (22) and Maegan Seawright (21). ... Her uncle, James Seawright, was an All-American linebacker the University of South Carolina and was drafted by the Buffalo Bills in the 11th round of the 1985 NFL Draft. ... Favorite Bible verse: "Cast all your anxiety on the Lord, because He cares for you." (1 Peter 5:7)

KENDALL SHAW

2015-16 (RS JUNIOR)

2014-15 (RS SOPHOMORE): Missed most of the season with an ankle injury, but saw action in eight games, averaging 2.3 points per game. ... Nominated for the 2015 Allstate WBCA and NABC Good Works Team. ... Named to SEC's Community Service team. ... Notable games: Made the first 3-pointer of her career and finished with five points and two rebounds in loss to Marquette on Dec. 18. ... Had two points and a blocked shot in win over Elon on Dec. 14. ... Had five points and three rebounds in win over MVSU on Dec. 3. ... Scored two points in loss to No. 3 UConn on Nov. 29. ... Saw two minutes of action in win over Minnesota on Nov. 28. ... Had four points in win over St. Louis on Nov. 24. ... Recorded a blocked shot in road win over Wisconsin on Nov. 20. ... Saw first game action since 2012-13 campaign in season-opening win over Belmont on Nov. 14.

2013-14 (SOPHOMORE): Missed entire season with knee injury.

2012-13 (FRESHMAN): Played in 23 games on the year, averaging 3.5 points and 2.0 rebounds...Played her best basketball in the NCAA Tournament, scoring five points in the first round win over Saint Joseph's before posting a career-high 12 points in second round loss to No. 3/3 Connecticut...Scored six points in win over Missouri...Pulled down four boards, while adding four points, against No. 10/8 Kentucky...Scored six points in win over Ole Miss...Grabbed two rebounds at No. 16/16 Texas A&M, her first action since the SEC-opener...Recorded five points in win over College of Charleston...Scored eight points and grabbed three rebounds in win over Austin Peay... Reached double-digits for the first time in her career against Florida State in San Juan, scoring 10 points while grabbing four rebounds...Had an outstanding collegiate debut against McNeese State, scoring six points, grabbing seven rebounds and blocking four shots...Scored four points in 10 minutes of action at Lipscomb.

HIGH SCHOOL (Barbers Hill): Ranked No. 109 in the country by Blue Star ... Averaged 17.1 points, 9.5 rebounds and 4.3 blocks per game as a senior ... For career, scored over 2,200 points, grabbed over 1,300 rebounds and blocked over 500 shots ... Helped Barbers Hill to a 123-27 record over four years ... Barbers Hill record holder for career rebounds and blocks ... Named to Texas All-Tournament Team in 2012 while helping Barbers Hill set a school record with 38 wins under head coach Kit Kyle-Martin ... Academic All-State honoree as a senior, as well as a four-time Academic All-District selection ... Three-time Houston Chronicle All-Greater Houston honoree ... earned First Team All-District honors all four seasons ... Played AAU for DFW Elite T-Jack, which won the Nike Nationals in 2011.

ACADEMICS: Majoring in child studies and Medicine, Health and Society.

PERSONAL: Daughter of Robert and Tammy Shaw ... Has one brother, Keaton ... Favorite basketball player is Jayne Appel of the San Antonio Silver Stars ... Favorite sport other than basketball is football ... Chose Vanderbilt over Rice, Nebraska, Wisconsin, DePaul and TCU ... Born December 2, 1993, in Houston, Texas.

2014-15 INDIVIDUAL BIOS

MINTA SPEARS

2015-16 (JUNIOR): Joined the Commodore program on May 13 after enrolling in VU grad school.

CAREER AT TEXAS TECH: Played in 62 games -- including making 51 starts -- over the past two seasons, averaging 7.4 points, 2.2 rebounds and 1.9 assists per game. ... Was an Academic All-Big 12 First Team honoree. ... Saw action in 31 games in 2014-15 for the Red Raiders, including making 21 starts. Averaged 6.5 points, 1.8 rebounds and 1.7 assists per game. ... Has compiled 82 career 3-pointers, and shot 35 percent from 3-point range last season. ... Was one of only two players to start all 30 games for Texas Tech in 2013-14. She reached double figures in 12 games, including scoring a career-high 25 points against Arizona State. ... Suffered a torn ACL in her freshman campaign at Texas Tech and was sidelined the rest of the season after seeing action in one game.

HIGH SCHOOL: Played at Bullard High and set four prominent school records -- 2,879 points, 375 three-pointers, 776 assists and 475 rebounds. ... Was a four-time District MVP and three-time All-State Selection. ... Averaged 33.7 points per game as a senior and was a PARADE Magazine All-American. ... Also competed in cross country and track, and was a 2009 state qualifier in cross country. ... Qualified for the track regionals in five events (1600m, 3200m, triple jump, long jump, mile relay), along with being an Academic All-State Track Selection. ... Competed in drama and theater.

MARQU'ES WEBB

2015-16 (JUNIOR)

2014-15 (SOPHOMORE): Overcame a series of injuries to produce a strong sophomore season, seeing action in 27 games (17 starts) ... Shot a team-high 59.5 percent from the floor while ranking second on the team in rebounding (4.9) and third in scoring (8.0). ... Scored in double figures in 10 games, including the final five games of the season. ... Posted three double-doubles. ... Notable games: Scored a team-high 18 points and had five rebounds in loss to Kentucky in second round of SEC Tournament on March 5. ... Had 14 points and seven rebounds in win over Alabama in first round of SEC Tournament on March 4. ... Went 5-of-7 from the floor and scored 10 points before fouling out in loss to Tennessee at March 1. ... Narrowly missed a double-double, finishing with 13 points and nine rebounds before fouling out in loss to Auburn on Feb. 26. ... Posted her third double-double of the season with 11 points and 11 rebounds in loss to Missouri on Feb. 22. ... Had 11 points in loss to South Carolina on Feb. 15. ... Posted her second double-double of the season with 15 points and a career-high 12 rebounds in loss to Florida on Feb. 1. ... Scored 11 points and had six rebounds in loss to Georgia on Jan. 18. ... Scored nine points and collected five rebounds in loss to Tennessee on Jan. 5. ... Returned from a four-game injury absence and contributed five points and four rebounds in win over James Madison on Dec. 29. ... Scored nine points and grabbed five rebounds in win over Minnesota on Nov. 28. ... Had eight points and four rebounds in win over St. Louis on Nov. 24. ... Had 13 points and 11 rebounds in overtime win against Green Bay on Nov. 17. ... Had 11 points and four rebounds in season-opening win over Belmont on Nov. 14.

2013-14 (FRESHMAN): Quickly established herself as an impact player at Vanderbilt, seeing action in all 31 games, including appearing in the starting lineup 18 times. ... Finished the season averaging 7.1 points and 4.0 rebounds per game, and scored in double figures in nine games, including three straight in mid-December. ... Capped her freshman season with an 18-point, eight-rebound performance against Arizona State in first-round NCAA Tournament loss on March 22. ... Had 12 points and finished 5-of-6 from the floor in loss to Tennessee on Feb. 10. ... Scored nine points with nine rebounds in loss to Missouri on Jan. 30. ... Scored 12 points and pulled down four rebounds in win over Tennessee on Jan. 12. ... Scored 10 points with three rebounds in win over UAB on Dec. 30. ... Scored 10 points off the bench in the win over UNC Asheville on Dec. 21. ... Scored 15 points on 6-of-9 shooting and pulled down a team-high eight rebounds before fouling out in win at James Madison on Dec. 18. ... Scored eight points and pulled down five rebounds in win over Hartford on Dec. 15. ... Scored 10 points and had six rebounds against Elon (Nov. 29) and then had nine points and two rebounds against Wisconsin (Nov. 30) during the Thanksgiving Tournament. ... Had 10 points and two rebounds in win over Dayton on Nov. 24. ... Scored eight points and two rebounds before fouling out in a road loss to Duke on Nov. 21. ... Started at forward and scored 13 points in first-career game against Appalachian State on Nov. 8.

HIGH SCHOOL (Hoover): McDonald's All-America Nominee ... 2013 Alabama Miss Basketball and Gatorade Player of the Year ... Averaged 15.1 points and 11.0 rebounds as a senior, leading Hoover to a 28-4 record and the Alabama 6-A State Championship ... Scored 29 points and grabbed 22 rebounds in the state championship game ... Earned state tournament MVP honors as a senior and junior ... Helped Lady Bucs to state title and national ranking of eighth as a junior, earning nominations for 6-A Player of the Year and Miss Basketball ... Played first two prep seasons at Brewbaker Tech in Montgomery, Ala., helping team to its first-ever state title as a sophomore with 16.3 points and 18.8 rebounds per game ... Earned Alabama Class 4-A Player of the Year honors and state championship MVP as a sophomore ... Was the top high school rebounder in the nation in 2010-11 ... Played for coaches Donnie Quinn and Tiffany Frederick at Hoover ... Selected to USA Basketball U-19 trials ... Competed on the AAU circuit with the Georgia Metros, the same program which produced former Commodores Tiffany Clarke and Elan Brown ... Ranked 21st overall and sixth at post by ESPN HoopGurlz, with a four-star rating and a grade of 95.

ACADEMICS: Sociology major.

PERSONAL: Daughter of LaTangela Sanderson ... Has two siblings, Bianca and Marcus ... Born March 23, 1995, in Montgomery, Ala., ... Favorites include the Los Angeles Sparks (WNBA team), Nneka Ogwumike (WNBA Player), ice cream (snack), The Land Before Time (movie) and Nicki Minaj (musician) ... Wears 22 at Vanderbilt because it is her favorite number. ... Bucket list includes winning a national championship, being drafted by the WNBA and competing in an ice cream eating contest.

VANDERBILT BOX SCORES

GAME 1: Vanderbilt 89, Miss. Valley St. 39

Miss. Valley State vs VANDERBILT
11/15/15 2 p.m. at Nashville, Tenn. (Memorial Gym)

Miss. Valley State 39 • 0-2

#	Player	Total		3-Ptr		Rebounds			PF	TP	A TO Blk Stl				Min
		FG-FGA	FG-FGA	FT-FTA	Off Def Tot										
03	Kahdejah Stevens	f	4-14	1-4	2-6	4	9	13	4	11	0	4	0	1	31
20	Ashley Beals	f	2-7	0-0	5-5	3	3	6	0	9	1	1	2	2	38
15	Zemoria Jernigan	g	6-16	5-10	0-0	1	2	3	3	17	1	6	0	1	37
24	Kadesha Floyd	g	0-11	0-3	0-0	0	1	1	2	0	4	6	0	2	38
25	Christina Reed	g	1-4	0-0	0-0	2	3	5	3	2	0	6	0	0	11
10	Chelsea Tate	g	0-0	0-0	0-0	0	0	0	0	0	0	1	0	0	3
40	Feleshia Walters	g	0-1	0-0	0-0	0	0	0	4	0	0	0	0	0	13
55	Kassaedy Bolden	g	0-1	0-0	0-0	1	0	1	2	0	1	0	0	0	29
Team						0	2	2			1				
Totals			13-54	6-17	7-11	11	20	31	18	39	7	25	2	6	200
FG % 1st Half: 4-24		16.7%	2nd half: 9-30		30.0%	Game: 13-54		24.1%	Deadball						
3FG % 1st Half: 0-4		0.0%	2nd half: 6-13		46.2%	Game: 6-17		35.3%	Rebounds						
FT % 1st Half: 0-0		0.0%	2nd half: 7-11		63.6%	Game: 7-11		63.6%	2						

VANDERBILT 89 • 1-0

#	Player	Total		3-Ptr		Rebounds			PF	TP	A TO Blk Stl				Min
		FG-FGA	FG-FGA	FT-FTA	Off Def Tot										
22	Marq'ues Webb	f	2-6	0-0	4-6	2	2	4	1	8	0	3	3	1	15
15	Jasmine Jenkins	g	9-12	2-3	4-5	2	2	4	0	24	4	1	0	1	25
23	Minta Spears	g	2-4	1-2	0-0	0	3	3	1	5	7	1	0	2	28
25	Morgan Batey	g	5-7	0-0	3-5	3	2	5	1	13	3	1	1	2	32
33	Christa Reed	g	7-14	4-10	4-4	0	3	3	2	22	2	2	0	3	33
12	Myka Dancy	g	0-0	0-0	0-0	0	0	0	1	0	0	1	0	0	5
24	Kristen Gaffney	g	1-4	0-1	0-0	0	1	1	0	2	3	0	0	3	22
35	Kendall Shaw	g	2-6	0-0	2-2	8	10	1	6	0	1	2	0	0	16
41	Miaya Seawright	g	0-0	0-0	0-0	0	1	1	1	0	1	0	0	0	5
44	Rayte'a Long	g	4-6	0-0	1-4	1	6	7	3	9	0	2	1	1	19
Team						2	4	6			1				
Totals			32-59	7-16	18-26	12	32	44	11	89	20	13	7	13	200
FG % 1st Half: 15-29		51.7%	2nd half: 17-30		56.7%	Game: 32-59		54.2%	Deadball						
3FG % 1st Half: 3-9		33.3%	2nd half: 4-7		57.1%	Game: 7-16		43.8%	Rebounds						
FT % 1st Half: 11-14		78.6%	2nd half: 7-12		58.3%	Game: 18-26		69.2%	3						

Officials: Bryan Enterline, Joe Cunningham, Eric Baker
Technical fouls: Miss. Valley State-None. VANDERBILT-None.
Attendance: 2264

Score by periods	1st	2nd	3rd	4th	Total
Miss. Valley State	4	4	17	14	39
VANDERBILT	26	18	29	16	89

GAME 3: Green Bay 58, Vanderbilt 56



Official Basketball Box Score -- Game Totals -- Final Statistics
Vanderbilt vs Green Bay
11/21/15 1:00 PM at Green Bay, Wis. (Kress Center)



Vanderbilt 56 • 1-2

#	Player	Total		3-Ptr		Rebounds			PF	TP	A TO Blk Stl				Min
		FG-FGA	FG-FGA	FT-FTA	Off Def Tot										
01	Rebekah Dahlman	*	1-5	1-4	0-0	2	5	7	3	3	0	3	0	0	19
15	Jasmine Jenkins	*	4-6	0-0	3-4	0	1	1	3	11	3	5	0	2	37
23	Minta Spears	*	2-6	0-2	0-0	1	1	2	1	4	3	3	0	0	38
25	Morgan Batey	*	1-2	0-0	0-0	1	3	4	2	2	2	4	0	0	30
33	Christa Reed	*	3-9	3-5	2-2	0	0	0	4	11	0	1	0	0	18
02	Rachel Bell		5-11	1-6	2-2	1	0	1	0	13	0	3	0	2	24
22	Marq'ues Webb		0-0	0-0	0-0	0	1	1	1	0	0	2	1	0	4
24	Kristen Gaffney		1-1	0-0	0-0	0	2	2	0	2	0	0	0	0	6
35	Kendall Shaw		0-0	0-0	0-0	0	0	0	0	0	1	1	0	0	1
44	Rayte'a Long		2-2	0-0	6-8	4	5	9	3	10	1	3	0	1	23
Team						3	6	9							
Totals			19-42	5-17	13-16	12	24	36	17	56	10	25	1	5	200
FG % 1st Half: 12-19		63.2%	2nd half: 7-23		30.4%	Game: 19-42		45.2%	Deadball						
3FG % 1st Half: 3-7		42.9%	2nd half: 2-10		20.0%	Game: 5-17		29.4%	Rebounds						
FT % 1st Half: 4-4		100.0	2nd half: 9-12		75.0%	Game: 13-16		81.3%	4						

Green Bay 58 • 2-0

#	Player	Total		3-Ptr		Rebounds			PF	TP	A TO Blk Stl				Min
		FG-FGA	FG-FGA	FT-FTA	Off Def Tot										
02	BUCK, Tesha	*	5-8	4-7	2-2	1	2	3	3	16	1	3	0	2	33
04	LUKAN, Kailli	*	1-3	0-0	0-0	3	3	6	4	2	1	2	0	4	29
10	KRAKER, Mehryn	*	1-9	1-5	2-2	2	1	3	0	5	4	0	0	1	35
24	LeCLAIRE, Allie	*	4-12	0-6	4-6	0	1	1	2	12	2	4	0	1	38
33	WEITZER, Lexi	*	0-0	0-0	0-0	0	0	0	0	2	0	1	0	0	10
01	WELLNITZ, Jen		1-4	0-1	0-0	0	0	0	0	2	2	0	0	0	8
05	JAMES, Laken		0-1	0-1	0-0	0	0	0	0	1	0	0	0	0	8
21	LINDSTROM, Jessica		4-7	1-2	2-2	0	0	0	2	11	1	1	0	0	16
44	MONKE, Mariah		0-0	0-0	0-0	0	0	0	2	0	1	0	0	0	2
55	TERRY, Sam		2-6	1-2	5-6	2	2	4	1	10	1	1	0	1	21
Team						1	1	2							
Totals			18-50	7-24	15-18	9	10	19	18	58	12	12	0	9	200
FG % 1st Half: 11-30		36.7%	2nd half: 7-20		35.0%	Game: 18-50		36.0%	Deadball						
3FG % 1st Half: 5-14		35.7%	2nd half: 2-10		20.0%	Game: 7-24		29.2%	Rebounds						
FT % 1st Half: 1-2		50.0%	2nd half: 14-16		87.5%	Game: 15-18		83.3%	2						

Officials: Becky Blank, Steve Matuszewski, Scott Doberstein
Technical fouls: Vanderbilt-TEAM. Green Bay-None.
Attendance: 2351

Score by periods	1st	2nd	3rd	4th	Total
Vanderbilt	7	24	22	3	56
Green Bay	13	15	17	13	58

Last FG - VANDY 4th-00:16, GB 4th-01:54.
Largest lead - VANDY by 11 3rd-02:38, GB by 13 2nd-06:48.
VANDY led for 23:00, GB led for 16:33. Game was tied for 00:27.

Points	In	Off	2nd	Fast
VANDY	20	18	10	4
GB	20	18	7	3

Score tied - 0 times.
Lead changed - 3 times.

GAME 2: Dayton 81, Vanderbilt 56



Official Basketball Box Score -- Game Totals -- Final Statistics
VANDERBILT vs Dayton
11/18/15 7:00 PM at Dayton, OH (UD Arena)



VANDERBILT 56 • 1-1

#	Player		Total		3-Ptr		Rebounds			PF	TP	A TO Blk Stl				Min
			FG-FGA	FG-FGA	FT-FTA	Off	Def	Tot								
15	Jasmine Jenkins	f	5-15	0-1	6-7	2	3	5	3	16	2	1	0	0	29	
35	Kendall Shaw	c	1-4	0-0	0-0	0	2	2	4	2	1	2	0	0	15	
23	Minta Spears	g	1-3	0-2	2-2	1	3	4	4	4	4	2	0	0	33	
25	Morgan Batey	g	1-5	1-2	3-4	3	1	4	4	6	1	4	0	1	21	
33	Christa Reed	g	2-9	0-5	0-0	0	3	3	4	4	0	0	0	1	33	
01	Rebekah Dahlman		3-6	2-3	1-1	0	3	3	4	9	1	2	0	0	22	
03	Rachel Bell		4-11	2-7	1-2	1	1	2	1	11	1	1	0	0	27	
22	Marq'ues Webb		1-5	0-0	0-2	2	2	4	2	2	1	0	0	0	7	
24	Kristen Gaffney		1-2	0-0	0-2	0	1	1	0	2	0	0	0	0	5	
44	Rayte'a Long		0-0	0-0	0-0	1	0	1	4	0	0	1	0	0	8	
Team						2	2	4								
Totals				19-60	5-20	13-20	12	21	33	30	56	11	13	0	2	200
FG % 1st Half: 7-33			21.2%	2nd half: 12-27		44.4%	Game: 19-60		31.7%							Deadball Rebounds 4
3FG % 1st Half: 2-14			14.3%	2nd half: 3-6		50.0%	Game: 5-20		25.0%							
FT % 1st Half: 5-9			55.6%	2nd half: 8-11		72.7%	Game: 13-20		65.0%							

VANDERBILT BOX SCORES

GAME 5: Vanderbilt 73, Austin Peay 56

Official Basketball Box Score -- Game Totals -- Final Statistics
Austin Peay vs VANDERBILT
11/27/15 12 p.m. at Nashville (Memorial Gym)

Austin Peay 56 • 2-5

#	Player	Total		3-Ptr		Rebounds		PF	TP	A	TO	Blk	Stl	Min
		FG-FGA	FG-FGA	FT-FTA	FT-FTA	Off	Def							
11	Alexander,Brianne	c	0-2	0-0	0-0	0	0	0	5	0	4	1	1	22
24	Rates,Beth	c	1-5	0-0	0-0	2	1	3	1	2	2	0	0	26
01	Gray,Tiasha	g	6-17	2-9	2-2	0	3	3	3	16	4	4	1	35
12	Rich,Madison	g	2-5	1-3	0-0	0	3	3	1	5	1	0	0	39
33	Baker,Falon	g	7-10	6-8	0-0	0	3	3	2	20	2	3	0	37
02	Hall,J'Nayah		0-1	0-1	0-0	0	0	0	0	0	0	0	0	1
13	Olaszewski,Shelby		0-1	0-1	0-0	1	0	1	2	0	0	1	0	8
23	Gooch,Sydney		1-1	0-0	0-2	0	2	2	0	2	0	1	0	14
25	Banks,Tearra		4-7	0-0	3-4	1	2	3	4	11	0	7	3	17
54	Maki,Lauren		0-0	0-0	0-0	0	0	0	0	0	0	0	0	1
Team						0	1	1						
Totals			21-49	9-22	5-8	4	15	19	18	56	13	17	5	200

FG % 1st Half: 8-23 34.8% 2nd half: 13-26 50.0% Game: 21-49 42.9% Deadball Rebounds 1
3FG % 1st Half: 3-12 25.0% 2nd half: 6-10 60.0% Game: 9-22 40.9%
FT % 1st Half: 0-1 0.0% 2nd half: 5-7 71.4% Game: 5-8 62.5%

VANDERBILT 73 • 3-2

#	Player	Total		3-Ptr		Rebounds		PF	TP	A	TO	Blk	Stl	Min
		FG-FGA	FG-FGA	FT-FTA	FT-FTA	Off	Def							
44	Rayte'a Long	f	1-1	0-0	0-0	0	2	2	4	2	0	2	0	12
03	Rachel Bell	g	3-8	1-5	0-0	0	1	1	0	7	0	1	1	15
15	Jasmine Jenkins	g	2-7	0-0	0-0	0	2	2	0	4	0	0	0	19
23	Minta Spears	g	1-2	0-1	0-0	0	2	2	1	2	14	0	0	38
33	Christa Reed	g	2-7	2-5	0-0	0	4	4	6	1	2	0	0	26
01	Rebekah Dahlman		7-9	3-4	0-0	0	4	4	0	17	0	2	0	23
22	Marq'ues Webb		5-7	0-0	2-3	3	4	7	2	12	1	2	0	19
24	Kristen Gaffney		5-5	0-0	2-2	2	5	7	1	12	3	3	0	23
25	Morgan Batey		4-6	0-0	1-1	1	1	2	1	9	1	1	0	19
35	Kendall Shaw		1-2	0-0	0-0	0	1	1	2	2	0	2	0	6
Team						2	0	2						
Totals			31-54	6-15	5-6	8	26	34	15	73	20	15	1	200

FG % 1st Half: 14-24 58.3% 2nd half: 17-30 56.7% Game: 31-54 57.4% Deadball Rebounds 1
3FG % 1st Half: 3-7 42.9% 2nd half: 3-8 37.5% Game: 6-15 40.0%
FT % 1st Half: 0-0 0.0% 2nd half: 5-6 83.3% Game: 5-6 83.3%

Officials: Bob Trammell, Maj Forsberg, Erica Bradley
Technical fouls: Austin Peay-None. VANDERBILT-None.
Attendance: 2447

Score by periods	1st	2nd	3rd	4th	Total
Austin Peay	9	10	21	16	56
VANDERBILT	15	16	16	26	73

Points	In	Off	2nd	Fast	Bench
APSU	16	T/O	Chance	Break	
VANDY	30	25	12	13	52

Last FG - APSU 4th-00:38, VANDY 4th-00:30.
Largest lead - APSU None, VANDY by 19 4th-02:24.
APSU led for 00:00. VANDY led for 39:00. Game was tied for 00:57.

Score tied - 1 time.
Lead changed - 0 times.

GAME 7: Vanderbilt 86, Air Force 29



Official Basketball Box Score -- Game Totals -- Final Statistics
Air Force vs VANDERBILT
11/30/15 8 p.m. at Nashville, Tenn. (Memorial Gym)



Air Force 29 • 0-6

#	Player	Total		3-Ptr		Rebounds		PF	TP	A	TO	Blk	Stl	Min
		FG-FGA	FG-FGA	FT-FTA	FT-FTA	Off	Def							
13	FOTSCH, Sarah	f	5-10	1-2	0-2	1	1	2	1	11	0	3	0	32
20	WALL, Cheyenne	f	1-2	0-0	0-0	0	1	1	3	2	0	2	0	12
04	GRAHAM, Sydney	g	2-5	1-1	0-0	0	0	0	2	5	2	5	0	25
10	ITUGBU, Venessannah	g	2-4	0-1	0-0	2	1	3	0	4	0	4	1	24
11	PORTER, Courtney	g	0-5	0-3	0-0	0	2	2	1	0	4	5	0	31
02	JACKSON, Myah		0-0	0-0	0-0	0	1	1	1	0	0	1	0	6
03	CLARKE, Rileymarie		0-0	0-0	0-0	1	0	1	1	0	1	1	0	5
05	FALVEY, Sarah		1-3	0-1	0-0	1	0	1	1	2	2	1	0	17
12	PARKER, Taylor		2-5	0-0	1-2	0	1	1	3	5	0	1	0	17
22	BENNETT, Dee		0-2	0-0	0-0	0	2	2	1	0	0	3	0	18
31	BORNGESSER, Maggie		0-0	0-0	0-0	0	0	0	4	0	1	0	0	7
32	GLAAB, Darby		0-0	0-0	0-0	0	0	0	0	0	0	0	1	6
Team						1	0	1		3				
Totals			13-36	2-8	1-4	6	9	15	18	29	9	30	1	200

FG % 1st Half: 5-17 29.4% 2nd half: 8-19 42.1% Game: 13-36 36.1% Deadball Rebounds 2
3FG % 1st Half: 1-5 20.0% 2nd half: 1-3 33.3% Game: 2-8 25.0%
FT % 1st Half: 0-0 0.0% 2nd half: 1-4 25.0% Game: 1-4 25.0%

VANDERBILT 86 • 5-2

#	Player	Total		3-Ptr		Rebounds		PF	TP	A	TO	Blk	Stl	Min
		FG-FGA	FG-FGA	FT-FTA	FT-FTA	Off	Def							
44	Rayte'a Long	f	3-5	0-0	3-3	1	1	2	1	9	3	2	0	19
03	Rachel Bell	g	8-11	4-4	0-1	1	1	2	2	20	1	1	0	25
15	Jasmine Jenkins	g	6-7	0-0	0-1	0	2	2	0	12	2	2	0	21
23	Minta Spears	g	1-2	0-0	0-0	0	2	2	3	2	1	4	0	23
33	Christa Reed	g	4-7	0-1	1-1	1	2	3	0	9	4	0	0	25
01	Rebekah Dahlman		3-7	1-3	1-2	0	1	1	0	8	2	1	0	12
12	Myka Dancy		0-0	0-0	0-0	0	0	0	0	0	0	0	0	2
22	Marq'ues Webb		5-5	0-0	1-1	2	3	5	3	11	1	2	0	12
24	Kristen Gaffney		2-2	2-2	0-0	1	2	3	1	6	2	0	1	23
25	Morgan Batey		4-4	0-0	0-0	0	2	2	0	8	3	2	0	21
35	Kendall Shaw		0-2	0-0	1-2	1	0	1	4	1	0	1	1	7
41	Miaya Seawright		0-0	0-0	0-0	0	0	0	0	0	0	0	0	1
Team						2	1	3						
Totals			36-52	7-10	7-11	9	17	26	14	86	19	15	2	200

FG % 1st Half: 15-24 62.5% 2nd half: 21-28 75.0% Game: 36-52 69.2% Deadball Rebounds 2,1
3FG % 1st Half: 5-7 71.4% 2nd half: 2-3 66.7% Game: 7-10 70.0%
FT % 1st Half: 2-4 50.0% 2nd half: 5-7 71.4% Game: 7-11 63.6%

Officials: Beverly Roberts, Gina Cross, Angel Stanton
Technical fouls: Air Force-None. VANDERBILT-None.
Attendance: 2213

Score by periods	1st	2nd	3rd	4th	Total
Air Force	7	4	11	7	29
VANDERBILT	21	16	28	21	86

GAME 6: Vanderbilt 62, Ohio 59

Official Basketball Box Score -- Game Totals -- Final Statistics
Ohio vs VANDERBILT
11/28/15 2:30 p.m. at Memorial Gym (Nashville, Tenn.)

Ohio 59 • 3-2

#	Player	Total		3-Ptr		Rebounds		PF	TP	A	TO	Blk	Stl	Min
		FG-FGA	FG-FGA	FT-FTA	FT-FTA	Off	Def							
10	BALDWIN, Lexie	f	3-8	2-7	0-1	0	0	0	3	8	0	1	2	28
15	WEATHERSPOON, Jasm	f	3-4	0-1	2-2	1	1	2	4	8	0	2	0	24
04	BLACK, Kiyanna	g	8-16	6-13	3-8	1	3	4	3	25	0	2	0	38
05	LAMPKINS, Quiera	g	4-10	0-1	5-7	1	4	5	2	13	3	5	0	38
12	JENKINS, Yamonie	g	1-4	0-1	2-2	3	2	5	1	4	1	0	0	32
01	HARRIS, Mariah		0-1	0-0	0-0	0	0	0	0	0	1	1	0	8
03	DOSECK, Dominique		0-1	0-1	0-0	0	0	0	0	0	0	0	0	3
21	BOELIS, Kelly		0-1	0-0	1-3	1	0	1	2	1	1	1	1	18
22	KRUESINGER, Hannah		0-1	0-0	0-0	0	1	1	0	0	0	0	0	11
Team						3	1	4						
Totals			19-46	8-24	13-23	10	12	22	15	59	6	13	3	200

FG % 1st Half: 8-20 40.0% 2nd half: 11-26 42.3% Game: 19-46 41.3% Deadball Rebounds 7,1
3FG % 1st Half: 4-10 40.0% 2nd half: 4-14 28.6% Game: 8-24 33.3%
FT % 1st Half: 7-11 63.6% 2nd half: 6-12 50.0% Game: 13-23 56.5%

VANDERBILT 62 • 4-2

#	Player		Total		3-Ptr		Rebounds				PF	TP	A	TO	Blk	Stl	Min
			FG-FGA	FG-FGA	FT-FTA	Off	Def	Total									
44	Rayte'a Long	f	0-0	0-0	0-0	1	3	4	1	0	1	1	0	0	1	18	
03	Rachel Bell	g	2-8	1-4	1-2	0	0	0	2	6	0	3	0	1	0	19	
15	Jasmine Jenkins	g	1-6	0-0	0-0	2	0	2	2	2	2	0	1	0	1	18	
23	Minta Spears	g	4-6	1-3	2-2	0	2	2	2	11	1	3	0	0	0	30	
33	Christa Reed	g	4-8	2-3	0-0	0	3	3	1	10	3	0	0	1	0	21	
01	Rebekah Dahlman		2-4	2-4	2-2	0	5	5	1	8	0	3	0	1	0	19	
22	Marq'ues Webb		5-10	0-0	9-9	6	4	10	4	19	0	4	0	0	0	20	
24	Kristen Gaffney		0-4	0-0	0-0	3	0	3	3	0	3	0	0	1	0	18	
25	Morgan Batey		2-5	0-0	2-2	1	3	4	2	6	1	0	0	1	0	25	
35	Kendall Shaw		0-0	0-0	0-0	0	0	0	1	0	0	0	0	0	0	2	
	Team					5	0	5				1					
Totals			20-51	6-14	16-17	18	20	38	19	62	9	16	0	6	0	200	

VANDERBILT BOX SCORES

GAME 9: Vanderbilt vs. ETSU



Official Basketball Box Score -- Game Totals -- Final Statistics
ETSU vs VANDERBILT
12/05/15 1 p.m. at Memorial Gym (Nashville, Tenn.)



ETSU 39 • 3-6

#	Player	Total		3-Ptr		Rebounds		PF	TP	A	TO	Blk	Stl	Min
		FG-FGA	FG-FGA	FT-FTA	Off Def Tot	PF	TP							
24	Shomari Kendrick	f	0-3	0-0	0-0	1 1 2	3	0	0	1	0	1	0	18
30	Sadasia Tipples	f	1-1	0-0	0-2	3 3 6	4	2	0	1	1	0	0	19
02	Shamauria Bridges	g	5-14	5-10	2-2	1 0 1	2	17	2	4	0	0	0	32
04	Carley Lytton	g	3-10	2-8	0-0	0 2 2	1	8	1	2	0	0	0	37
10	Chandler Christopher	g	2-5	0-1	0-0	0 4 4	3	4	3	6	1	4	0	30
03	Adriane Vaughan	g	1-1	0-0	0-0	0 0 0	1	2	2	2	0	1	0	17
05	Raven Dean	g	0-3	0-0	0-0	0 2 2	1	0	1	2	0	0	0	9
22	Mallore Schurr	g	1-5	0-0	0-0	2 0 2	1	2	1	3	0	1	0	21
45	Yamile Rodriguez	g	2-2	0-0	0-0	0 1 1	2	4	0	1	1	1	0	17
Team					1 2 3									
Totals			15-44	7-19	2-4	8 15 23	18	39	10	22	3	8	0	200

FG % 1st Half: 5-19 26.3% 2nd half: 10-25 40.0% Game: 15-44 34.1%
3FG % 1st Half: 3-10 30.0% 2nd half: 4-9 44.4% Game: 7-19 36.8%
FT % 1st Half: 2-2 100.0 2nd half: 0-2 0.0% Game: 2-4 50.0%

Deadball
Rebounds
1,1

VANDERBILT 65 • 7-2

#	Player	Total		3-Ptr		Rebounds		PF	TP	A	TO	Blk	Stl	Min
		FG-FGA	FG-FGA	FT-FTA	Off Def Tot	PF	TP							
44	Rayte'a Long	f	1-2	0-0	1-2	1 2 3	1	3	0	1	0	0	0	21
03	Rachel Bell	g	6-16	2-7	2-2	0 0 0	0	16	3	1	0	0	0	24
15	Jasmine Jenkins	g	0-2	0-0	2-2	1 3 4	0	2	2	1	0	1	0	16
23	Minta Spears	g	3-5	2-3	0-0	0 3 3	1	8	5	4	0	4	0	35
33	Christa Reed	g	2-7	1-3	1-2	0 3 3	2	6	0	0	0	0	2	17
01	Rebekah Dahlman	g	5-7	2-3	3-4	2 1 3	0	15	1	1	0	1	0	17
12	Myka Dancy	g	0-0	0-0	0-0	0 1 1	0	0	0	0	0	0	0	2
22	Marqu'es Webb	g	2-2	0-0	0-0	1 0 1	3	4	0	3	0	1	1	11
24	Kristen Gaffney	g	1-3	0-0	0-0	1 5 6	2	2	2	0	0	2	2	25
25	Morgan Batey	g	2-4	0-0	3-4	1 3 4	2	7	2	3	0	3	2	23
35	Kendall Shaw	g	1-1	0-0	0-0	1 0 1	2	2	0	2	0	0	0	7
41	Miya Seawright	g	0-0	0-0	0-0	0 0 0	0	0	0	0	0	0	0	2
Team					2 1 3									
Totals			23-49	7-16	12-16	10 22 32	13	65	15	16	0	14	0	200

FG % 1st Half: 7-23 30.4% 2nd half: 16-26 61.5% Game: 23-49 46.9%
3FG % 1st Half: 4-12 33.3% 2nd half: 3-4 75.0% Game: 7-16 43.8%
FT % 1st Half: 7-10 70.0% 2nd half: 5-6 83.3% Game: 12-16 75.0%

Deadball
Rebounds
4

Officials: Cameron Inouye, Scott Yarbrough, Bill Larence
Technical fouls: ETSU-Chandler Christopher; VANDERBILT-None.
Attendance: 2264

Score by periods	1st	2nd	3rd	4th	Total
ETSU	11	4	15	9	39
VANDERBILT	13	12	20	20	65

GAME 11: Vanderbilt 64, UT Martin 61

Official Basketball Box Score -- Game Totals -- Final Statistics
UT Martin vs VANDERBILT
12/21/15 12 p.m. at Nashville, Tenn. (Memorial Gym)

UT Martin 61 • 7-5

#	Player	Total		3-Ptr		Rebounds		PF	TP	A	TO	Blk	Stl	Min
		FG-FGA	FG-FGA	FT-FTA	Off Def Tot	PF	TP							
14	ROBERTS, Chelsea	f	2-6	2-3	5-6	1 5 6	4	11	2	3	1	2	0	40
23	HOWARD, Haley	f	2-8	1-5	1-1	1 9 10	4	6	2	3	1	4	0	38
10	RUFFIN, DaiJia	g	6-11	0-1	3-3	2 1 3	5	15	2	5	0	0	0	25
20	SCHUBERT, Katie	g	2-4	1-2	5-6	0 5 5	4	10	3	1	0	2	0	35
21	WARD, Jessy	g	5-12	4-9	0-0	1 0 1	2	14	0	0	0	1	0	38
04	ROBERTSON, Emany	g	1-1	0-0	0-0	0 2 2	0	2	1	0	0	0	0	12
33	TAYLOR, Myah	g	1-3	0-1	1-2	0 1 1	2	3	0	1	0	0	0	9
44	COPNEY, Shy	g	0-3	0-1	0-0	0 0 0	2	0	1	2	0	2	0	3
Team					0 1 1									
Totals			19-48	8-22	15-18	5 24 29	23	61	11	15	2	11	0	200

1st FG %: 5-16 31.3% 2nd: 8-12 66.7% 3rd: 4-10 40.0% 4th: 2-10 20.0% Game: 19-48 39.6% Deadball
3FG % 1st Half: 2-7 28.6% 2nd half: 1-3 33.3% 1-6 16.7% 8-22 36.4% Rebounds
FT %: 0-0 0.0% 2-2 100.0% 1-2 50.0% 12-14 85.7% 15-18 83.3%

VANDERBILT 64 • 9-2

#	Player	Total		3-Ptr		Rebounds		PF	TP	A	TO	Blk	Stl	Min
		FG-FGA	FG-FGA	FT-FTA	Off Def Tot	PF	TP							
44	Rayte'a Long	f	2-2	0-0	2-2	1 6 7	3	6	0	0	0	1	0	15
03	Rachel Bell	g	4-12	2-5	0-0	0 1 1	2	10	0	2	0	0	0	28
15	Jasmine Jenkins	g	1-6	0-1	0-0	1 2 3	0	2	1	0	0	1	0	22
23	Minta Spears	g	0-0	0-0	0-0	0 1 1	5	0	3	5	1	0	0	22
33	Christa Reed	g	6-9	2-4	6-6	1 3 4	2	20	1	2	1	0	0	37
01	Rebekah Dahlman	g	3-7	2-4	0-0	0 3 3	2	8	3	1	0	0	0	28
22	Marqu'es Webb	g	2-3	0-0	1-5	1 3 4	2	5	1	0	1	0	1	14
24	Kristen Gaffney	g	1-5	0-3	3-5	3 3 6	0	5	1	2	0	2	1	14
25	Morgan Batey	g	3-4	0-0	2-3	0 0 0	5	8	1	3	0	3	0	20
Team					0 2 2									
Totals			22-48	6-17	14-21	7 24 31	21	64	10	17	2	8	0	200

1st FG %: 6-13 46.2% 2nd: 7-14 50.0% 3rd: 5-10 50.0% 4th: 4-11 36.4% Game: 22-48 45.8% Deadball
3FG % 1st Half: 1-4 25.0% 2nd half: 1-5 20.0% 2-4 50.0% 6-17 35.3% Rebounds
FT %: 0-1 0.0% 6-7 85.7% 1-2 50.0% 5-9 55.6% 14-21 66.7%

Officials: Jesse Dickerson, William L. (Billy) Smith, Kim Thebo
Technical fouls: UT Martin-None. VANDERBILT-None.
Attendance: 2574

Score by periods	1st	2nd	3rd	4th	Total
UT Martin	12	22	10	17	61
VANDERBILT	13	22	14	15	64

In	Off	2nd	Fast
Points	Paint	T/O	Chance
UTM	18	18	6
VANDY	24	18	4

Last FG - UTM 4th-01:56, VANDY 4th-03:03.
Largest lead - UTM by 5 2nd-05:49, VANDY by 10 4th-08:44.
UTM led for 07:03, VANDY led for 30:31. Game was tied for 02:26.

Score tied - 2 times.
Lead changed - 6 times.

GAME 10: Vanderbilt vs. Troy

Official Basketball Box Score -- Game Totals -- Final Statistics
TROY vs VANDERBILT
12/10/15 7 p.m. at Memorial Gym (Nashville, Tenn.)

TROY 43 • 3-3

#	Player	Total		3-Ptr		Rebounds		PF	TP	A	TO	Blk	Stl	Min
		FG-FGA	FG-FGA	FT-FTA	Off Def Tot	PF	TP							
22	Upshaw, Amahni	f	1-1	1-1	0-0	1 0 1	2	3	0	5	0	0	0	11
23	Emerson, Kristen	f	0-3	0-0	0-0	0 2 2	0	0	0	1	0	1	0	14
34	Ramirez, Caitlyn	f	0-6	0-2	0-0	3 2 5	2	0	0	0	1	0	0	9
03	Mendoza, Amanda	g	2-4	2-3	4-4	1 0 1	1	10	2	2	1	0	0	16
04	Beverly Kelley, A.	g	1-13	0-4	0-0	2 0 2	2	2	1	2	0	1	0	26
10	Chills, Jayla	g	1-6	0-2	0-0	2 1 3	1	2	0	1	0	1	0	16
11	Saunders, ArJae'	g	0-6	0-0	3-4	0 1 1	5	3	0	2	0	1	0	16
14	Banks, Claressa	g	0-5	0-2	1-2	0 0 0	4	1	1	3	0	0	0	17
20	Gibbs, Ta Kierra	g	2-6	1-3	2-2	1 0 1	3	7	1	3	0	0	0	14
21	Reid, Rachel	g	2-6	1-3	0-0	0 0 0	1	5	1	3	0	1	0	15
25	Johnson, Casie	g	0-0	0-0	0-0	0 1 1	0	0	0	0	1	0	0	11
32	Williams, Dajia	g	2-3	0-0	0-0	1 1 2	2	4	0	0	0	0	0	13
33	Day, Lauren	g	1-2	0-0	0-0	1 1 2	0	2	0	1	0	0	0	5
44	Fils-Alme', La'Tia	g	2-3	0-0	0-0	4 2 6	1	4	0	2	0	2	0	17
Team					1 3 4									
Totals			14-64	5-20	10-12	17 14 31	24	43	6	25	3	8	0	200

1st FG %: 3-14 21.4% 2nd: 3-14 21.4% 3rd: 3-19 15.8% 4th: 5-17 29.4% Game: 14-64 21.9% Deadball
3FG % 1st Half: 0-4 0.0% 0-3 0.0% 1-6 16.7% 4-7 57.1% Rebounds
FT %: 2-2 100.0% 3-4 75.0% 2-2 100.0% 10-12 83.3%

VANDERBILT 97 • 8-2

#	Player		Total		3-Ptr		Rebounds		PF	TP	A	TO	Blk	Stl	Min
			FG-FGA	FG-FGA	FT-FTA	Off Def Tot									
44	Rayte'a Long	f	1-2	0-0	0-0	0	4	4	2	2	0	1	0	0	12
03	Rachel Bell	g	3-8	1-4	0-0	1	1	2	3	7	1	3	0	0	19
15	Jasmine Jenkins	g	6-9	1-2	4-4	1	3	4	2	17	7	0	0	0	25
23	Minta Spears	g	0-1	0-1	2-2	1	2	3	1	2	7	2	1	5	30
33	Christa Reed	g	7-10	5-6	0-0	2	6	8	4	19	2	3	1	3	20
01	Rebekah Dahlman	g	5-9	1-4	3-4	0	5	5	2	14	1	2	0	0	17
12	Myka Dancy	g	0-0	0-0	0-0	0	0	0	0	0	0	0	0	0	4
22	Marques Webb	3	3-4	0-0	2-2	4	1	5	0	8	1	1	0	0	12
24	Kristen Gaffney	3	3-6	0-1	1-2	3	3	6	0	7	1	2	1	1	23
25	Morgan Bates	5	5-12	0-0	3-4	0	4	4	0	13	6	3	0	3	24
30	Kendall Shaw	3	3-3	0-0	1-2	0	0	1	6	1	0	0	0	0	10
41	Maya Seawright	1	1-1	0-0	0-0	0	0	0	2	0	0	0	0	0	4
	Team					3	3	6							
Totals			37-65	8-18	15-22	15	33	48	14	97	27	17	4	14	200

VANDERBILT BOX SCORES

GAME 13: Vanderbilt vs. Fordham



Official Basketball Box Score -- Game Totals -- Final Statistics
VANDERBILT vs Fordham
12/30/15 3:30 p.m. at Bronx, N.Y. (Rose Hill Gym)



VANDERBILT 53 • 11-2

#	Player	Total		3-Ptr		Rebounds			PF	TP	A TO Blk Stl				Min
		FG-FGA	FG-FGA	FT-FTA	Off Def Tot	PF	TP	A TO Blk Stl							
4	Rayte'a Long	f	3-3	0-0	1-2	3 3 6	2 7	1 0 0 0	0	19					
3	Rachel Bell	g	3-4	1-1	0-0	1 2 3	1 7	0 3 0 0	0	17					
5	Jasmine Jenkins	g	2-6	1-2	0-0	0 2 2	2 5	1 1 0 0	0	28					
3	Minta Spears	g	3-5	3-4	2-2	1 3 4	3 11	0 1 0 1	0	29					
3	Christa Reed	g	1-5	0-4	0-0	1 3 4	3 2	1 3 0 1	0	24					
1	Rebekah Dahlman		2-5	1-2	5-5	1 0 1	1 10	1 2 0 1	0	22					
2	Marqu'es Webb		2-5	0-0	0-0	2 2 4	2 4	0 3 0 0	0	14					
4	Kristen Gaffney		0-2	0-0	3-4	0 1 1	3 3	1 1 0 0	0	24					
5	Morgan Batey		2-7	0-0	0-0	0 2 2	0 4	3 1 1 2	0	21					
5	Kendall Shaw		0-0	0-0	0-0	0 1 1	1 0	0 2 0 0	0	2					
Team						3 2 5									
Totals			18-42	6-13	11-13	12 21 33	18 53	8 18 1 5	0	200					

FG % 1st Half: 9-22 40.9% 2nd half: 9-20 45.0% Game: 18-42 42.9%
3FG % 1st Half: 3-3 100.0 2nd half: 3-10 30.0% Game: 6-13 46.2%
FT % 1st Half: 6-7 85.7% 2nd half: 5-6 83.3% Game: 11-13 84.6%

Fordham 40 • 5-8

#	Player	Total		3-Ptr		Rebounds			PF	TP	A TO Blk Stl				Min
		FG-FGA	FG-FGA	FT-FTA	Off Def Tot	PF	TP	A TO Blk Stl							
2	BURNS, Danielle	f	2-5	0-1	0-0	0 3 3	4 4	1 1 0 0	0	29					
4	CLARK, Samantha	f	4-9	0-1	3-4	0 2 2	4 11	1 2 4 1	0	40					
5	DAVIS, G'mrice	g	2-7	0-0	0-0	3 3 6	4 4	2 4 0 0	0	29					
0	FOMINA, Asnate	g	3-8	2-5	0-0	1 0 1	4 8	3 4 0 2	0	31					
5	MISSURY, Hannah	g	4-14	2-9	1-1	1 2 3	2 11	0 2 0 0	0	38					
2	HOLDEN, Lauren		0-1	0-0	0-0	0 0 0	1 0	0 2 0 0	0	11					
4	PADOVANO, Danielle		0-2	0-1	2-2	1 0 1	0 2	3 0 0 1	0	22					
Team						4 2 6									
Totals			15-46	4-17	6-7	10 12 22	19 40	10 16 4 4	0	200					

FG % 1st Half: 5-21 23.8% 2nd half: 10-25 40.0% Game: 15-46 32.6%
3FG % 1st Half: 1-7 14.3% 2nd half: 3-10 30.0% Game: 4-17 23.5%
FT % 1st Half: 3-4 75.0% 2nd half: 3-3 100.0% Game: 6-7 85.7%

Officials: Geraldine Smith, Isaac Johnson, John Capolino
Technical fouls: VANDERBILT-None. Fordham-None.
Attendance: 622
Fordham Women's Holiday Classic Championship Game

Score by periods	1st	2nd	3rd	4th	Total
VANDERBILT	21	6	10	16	53
Fordham	11	3	14	12	40

GAME 15: Vanderbilt vs. South Carolina

Official Basketball Box Score -- Game Totals -- Final Statistics
South Carolina vs VANDERBILT
01/07/16 8 p.m. at Nashville, Tenn. (Memorial Gym)

South Carolina 71 • 14-0, 2-0

#	Player	Total		3-Ptr		Rebounds			PF	TP	A TO Blk Stl				Min
		FG-FGA	FG-FGA	FT-FTA	Off Def Tot	PF	TP	A TO Blk Stl							
22	WILSON, A'ja	f	1-3	0-0	2-4	0 6 6	4 4	2 1 0 0	0	24					
31	DOZIER, Asia	f	1-5	1-4	0-0	0 1 1	2 3	4 2 0 0	0	23					
41	COATES, Alaina	c	5-6	0-0	1-4	3 7 10	2 11	1 1 0 0	0	29					
05	SESSIONS, Khadijah	g	3-5	2-3	2-3	3 1 4	1 10	0 0 0 3	0	30					
25	MITCHELL, Tiffany	g	8-15	3-6	3-6	1 1 2	3 22	5 2 0 2	0	34					
01	CUEVAS, Bianca		2-6	0-3	0-0	0 1 1	2 4	2 2 0 1	0	12					
4	CLINEY, Doniyah		1-2	0-0	0-0	0 0 0	2 2	0 0 0 0	0	5					
23	ROY, Tina		4-8	4-6	1-2	0 1 1	0 13	1 2 0 1	0	20					
4	IMOVBIOH, Sarah		0-0	0-0	0-0	0 2 2	1 0	0 1 0 0	0	5					
40	WHITE, Jatarie		0-0	0-0	2-4	0 2 2	1 2	0 0 0 0	0	18					
Team						1 0 1									
Totals			25-50	10-22	11-23	8 22 30	18 71	15 11 0 7	0	200					

1st - FG %: 6-13 46.2% 2nd: 5-12 41.7% 3rd: 7-14 50.0% 4th: 7-11 63.6% Game: 25-50 50.0% Deadball Rebounds 9,1
3FG %: 1-6 16.7% 2nd: 3-6 50.0% 3rd: 3-5 60.0% 4th: 4-5 80.0% 10-22 45.5%
FT %: 2-6 33.3% 4-5 80.0% 1-2 50.0% 4-5 80.0% 11-23 47.8%

VANDERBILT 61 • 11-4, 0-2

#	Player	Total		3-Ptr		Rebounds			PF	TP	A TO Blk Stl				Min
		FG-FGA	FG-FGA	FT-FTA	Off Def Tot	PF	TP	A TO Blk Stl							
44	Rayte'a Long	f	1-1	0-0	0-0	3 1 4	2 2	0 1 0 0	0	11					
1	Rebekah Dahlman	g	5-10	2-7	2-2	2 4 6	3 14	3 1 0 2	0	33					
03	Rachel Bell	g	3-12	0-4	3-4	1 1 2	0 9	1 1 0 0	0	28					
3	Minta Spears	g	1-9	0-5	2-2	0 2 2	4 4	4 3 0 0	0	39					
33	Christa Reed	g	2-6	2-4	0-0	0 3 3	2 6	0 4 0 1	0	29					
15	Jasmine Jenkins		2-3	0-0	0-0	1 2 3	1 4	2 2 0 2	0	11					
22	Marqu'es Webb		3-5	0-0	1-1	0 3 3	5 7	0 1 0 0	0	17					
25	Morgan Batey		2-3	0-0	2-2	0 2 2	1 6	2 0 0 0	0	20					
35	Kendall Shaw		3-4	0-0	3-4	1 1 2	1 9	0 0 1 0	0	12					
Team						1 1 2									
Totals			22-53	4-20	13-15	9 20 29	19 61	12 13 1 5	0	200					

1st - FG %: 2-7 28.6% 2nd: 8-13 61.5% 3rd: 6-16 37.5% 4th: 6-17 35.3% Game: 22-53 41.5% Deadball Rebounds 1
3FG %: 1-4 25.0% 1-4 25.0% 1-5 20.0% 1-7 14.3% 4-20 20.0%
FT %: 5-6 83.3% 4-4 100.0% 2-2 100.0% 2-3 66.7% 13-15 86.7%

Officials: Beverly Roberts, Jesse Dickerson, Douglas Knight
Technical fouls: South Carolina-None. VANDERBILT-None.
Attendance: 2547

Score by periods	1st	2nd	3rd	4th	Total
South Carolina	15	16	18	22	71
VANDERBILT	10	21	15	15	61

Last FG - SC 4th:00:55, VANDY 4th:02:22.
Technical fouls: SC by 10 4th:00:24, VANDY by 6 3rd:07:31.
SC led for 25:49, VANDY led for 09:56. Game was tied for 04:08.

GAME 14: Vanderbilt vs. Ole Miss



Official Basketball Box Score -- Game Totals -- Final Statistics
VANDERBILT vs Ole Miss
1/16 2:00 PM at Oxford, Miss. (Tad Smith Coliseum)



VANDERBILT 52 • 11-3, 0-1

#	Player	Total		3-Ptr		Rebounds			PF	TP	A TO Blk Stl				Min
		FG-FGA	FG-FGA	FT-FTA	Off Def Tot	PF	TP	A TO Blk Stl							
44	Rayte'a Long	f	4-5	0-1	0-0	1 2 3	3 8	1 2 0 2	0	18					
03	Rachel Bell	g	1-2	1-1	0-0	0 2 2	2 3	1 1 1 0	0	20					
15	Jasmine Jenkins	g	1-6	0-0	2-2	1 5 6	2 4	2 4 0 0	0	25					
23	Minta Spears	g	2-4	0-2	5-6	0 1 1	1 9	5 5 0 1	0	40					
33	Christa Reed	g	6-14	2-5	2-2	1 2 3	4 16	2 0 0 0	0	27					
01	Rebekah Dahlman		1-5	0-2	4-4	1 1 2	1 6	0 2 0 0	0	14					
22	Marqu'es Webb		0-0	0-0	0-4	3 5 8	3 0	1 5 0 1	0	21					
24	Kristen Gaffney		1-6	0-2	0-0	1 2 3	0 2	3 3 0 1	0	22					
25	Morgan Batey		2-3	0-0	0-0	0 3 3	0 4	1 3 0 1	0	13					
Team						2 0 2									
Totals			18-45	3-13	13-18	10 23 33	16 52	16 26 1 6	0	200					

FG % 1st Half: 11-23 47.8% 2nd half: 7-22 31.8% Game: 18-45 40.0%
3FG % 1st Half: 1-5 20.0% 2nd half: 2-8 25.0% Game: 3-13 23.1%
FT % 1st Half: 6-9 66.7% 2nd half: 7-9 77.8% Game: 13-18 72.2%

Ole Miss 55 • 9-5, 1-0

#	Player	Total		3-Ptr		Rebounds			PF	TP	A TO Blk Stl				Min
		FG-FGA	FG-FGA	FT-FTA	Off Def Tot	PF	TP	A TO Blk Stl							
11	Joseph,Shequila	f	3-5	2-4	4-4	3 3 6	1 12	0 3 1 1	0	25					
03	Hayes,A/Queen	g	0-2	0-1	0-0	0 1 1	3 0	0 2 0 0	0	10					
05	Sisk,Erika	g	6-9	0-0	6-9	0 0 0	2 18	3 1 0 6	0	37					
23	Sesson,Shandricka	g	5-20	0-4	2-2	1 6 7	3 12	2 5 2 2	0	40					
44	Lewis,Torri	g	0-1	0-0	0-0	0 0 0	1 0	1 0 0 0	0	27					
00	Golden,Kiara		0-2	0-2	0-0	0 2 2	0 0	0 1 0 0	0	5					
00	Williams,Jonell		0-0	0-0	0-0	0 0 0	1 0	0 0 0 0	0	3					
15	Briggs,Kelsey		0-0	0-0	0-0	1 0 1	0 0	0 0 0 0	0	2					
20	Muhammad,Madinah		0-0	0-0	0-0	0 0 0	1 0	0 3 0 0	0	4					
24	Hart,Bretta		4-5	0-0	1-2	1 3 4	5 9	0 2 1 2	0	24					
25	Alston,Alissa		2-5	0-1	0-0	1 2 3	5 4	1 3 0 0	0	23					
Team						1 1 2									
Totals			20-49	2-12	13-17	8 18 26	22 55	7 20 4 11	0	200					

FG % 1st Half: 9-25 36.0% 2nd half: 1

VANDERBILT BOX SCORES

GAME 17: Vanderbilt vs. LSU

Official Basketball Box Score -- Game Totals -- Final Statistics
LSU vs VANDERBILT
01/14/16 7 p.m. at Nashville, Tenn. (Memorial Gym)

LSU 42 • 7-10, 1-3

##	Player	Total		3-Ptr		Rebounds			PF	TP	A TO Blk			Stl	Min
		FG-FGA	FG-FGA	FT-FTA	Off Def Tot										
20	HYDER, Alexis	f	4-10	0-0	2-5	5	3	8	4	10	6	4	1	2	27
31	JONES, Ann	f	1-4	0-0	1-2	1	3	4	2	3	1	3	0	0	20
02	NORTON, Shanice	g	2-7	0-1	2-2	1	3	4	0	6	0	1	0	1	32
10	RHODES, Jasmine	g	4-10	1-1	1-2	6	2	8	1	10	0	4	0	0	33
13	HILL, Rina	g	0-8	0-0	0-0	1	4	5	2	0	1	2	0	0	40
03	BETHEL, Akilah	g	5-10	0-0	1-2	2	1	3	0	11	3	1	1	3	29
04	PEDERSEN, Anne		1-2	0-0	0-0	2	2	4	2	2	1	1	0	0	19
Team					0	2	2								
Totals			17-51	1-2	7-13	18	20	38	11	42	12	16	2	6	200
1st - FG %: 5-12 41.7% 2nd: 4-9 44.4% 3rd: 2-14 14.3% 4th: 6-16 37.5% Game: 17-51 33.3% Deadball Rebounds 3,1															
3FG %: 0-0 0.0% 0-0 0.0% 0-0 0.0% 1-2 50.0% 1-2 50.0%															
FT %: 1-1 100.0% 1-2 50.0% 4-6 66.7% 1-4 25.0%															

VANDERBILT 58 • 13-4, 2-2

##	Player	Total		3-Ptr		Rebounds			PF	TP	A TO Blk			Stl	Min
		FG-FGA	FG-FGA	FT-FTA	Off Def Tot										
44	Rayte'a Long	f	1-1	0-0	0-0	1	0	1	2	2	0	1	0	0	12
01	Rebekah Dahlman	g	2-6	1-5	2-2	0	3	3	2	7	4	1	0	3	28
03	Rachel Bell	g	2-9	1-4	0-0	1	2	3	0	5	1	1	0	0	26
23	Minta Spears	g	4-8	2-5	0-0	0	4	4	1	10	3	0	1	3	40
33	Christa Reed	g	6-8	3-4	0-1	0	0	0	2	15	1	4	0	2	30
15	Jasmine Jenkins		1-3	0-0	0-0	1	3	4	0	2	4	0	0	0	17
22	Marqu'es Webb		3-5	0-0	1-4	1	2	3	4	7	0	2	2	1	14
24	Kristen Gaffney		0-0	0-0	0-0	0	2	2	0	0	0	0	0	0	9
25	Morgan Batey		4-6	0-0	0-0	1	3	4	1	8	1	0	0	1	19
35	Kendall Shaw		1-2	0-0	0-0	1	0	1	1	2	0	0	1	0	5
Team					0	0	0								
Totals			24-48	7-18	3-7	6	19	25	13	58	14	9	4	10	200
1st - FG %: 6-13 46.2% 2nd: 6-13 46.2% 3rd: 7-11 63.6% 4th: 5-11 45.5% Game: 24-48 50.0% Deadball Rebounds 1															
3FG %: 3-8 37.5% 0-0 0.0% 2-5 40.0% 2-5 40.0%															
FT %: 0-0 0.0% 0-0 0.0% 1-4 25.0% 2-3 66.7% 3-7 42.9%															

Officials: Brian Hall, Laura Morris, Angelica Suffren
Technical fouls: LSU-None. VANDERBILT-None.
Attendance: 2332

Score by periods	1st	2nd	3rd	4th	Total
LSU	11	9	8	14	42
VANDERBILT	15	12	17	14	58

Last FG - LSU 4th-00:29, VANDY 4th-01:36.
Largest lead - LSU None, VANDY by 21 4th-01:36.
LSU led for 00:00. VANDY led for 39:05. Game was tied for 00:55.

	In	Off	2nd	Fast	Bench
Points	Paint	T/O	Chance	Break	
LSU	22	5	14	2	13
VANDY	30	23	1	11	19

Score tied - 1 time.
Lead changed - 0 times.

GAME 18: Vanderbilt vs. Tennessee



Official Basketball Box Score -- Game Totals -- Final Statistics
VANDERBILT vs Tennessee
01/21/16 7:01 p.m. at Knoxville, Tenn. (Thompson-Boling Arena)



VANDERBILT 49 • 13-5, 2-3

##	Player	Total		3-Ptr		Rebounds			PF	TP	A TO Blk			Stl	Min
		FG-FGA	FG-FGA	FT-FTA	Off Def Tot										
22	Marqu'es Webb	f	1-4	0-0	1-3	5	8	13	5	3	0	2	1	2	27
01	Rebekah Dahlman	g	5-9	3-5	4-4	0	4	4	3	17	0	5	0	1	36
03	Rachel Bell	g	4-6	0-1	0-0	1	1	2	0	8	0	2	0	0	19
23	Minta Spears	g	0-3	0-0	2-2	0	1	1	3	2	5	2	0	0	35
33	Christa Reed	g	1-5	0-3	1-2	1	1	2	2	3	0	2	0	0	21
15	Jasmine Jenkins		2-8	0-2	3-4	0	1	1	2	7	1	4	0	1	20
24	Kristen Gaffney		0-0	0-0	0-0	0	0	0	0	0	0	0	0	0	4
25	Morgan Batey		4-9	0-0	1-2	1	3	4	4	9	1	4	0	1	30
35	Kendall Shaw		0-1	0-0	0-0	0	0	0	0	0	0	0	0	0	4
44	Rayte'a Long		0-1	0-0	0-0	3	0	3	0	0	1	0	0	0	4
Team					3	3	6								
Totals			17-46	3-11	12-17	14	22	36	19	49	8	23	1	5	200

FG % 1st Half: 10-24 41.7% 2nd half: 7-22 31.8% Game: 17-46 37.0%
3FG % 1st Half: 2-4 50.0% 2nd half: 1-7 14.3% Game: 3-11 27.3%
FT % 1st Half: 3-4 75.0% 2nd half: 9-13 69.2% Game: 12-17 70.6%

Tennessee 58 • 12-6, 3-2

##	Player	Total		3-Ptr		Rebounds			PF	TP	A TO Blk			Stl	Min
		FG-FGA	FG-FGA	FT-FTA	Off Def Tot										
12	Graves, Bashaara	f	2-4	0-0	2-2	2	4	6	2	6	4	0	1	0	33
31	Nared, Jaime	f	3-8	0-1	1-3	3	1	4	0	7	0	1	0	2	23
21	Russell, Mercedes	c	3-5	0-0	2-4	2	3	5	4	8	1	2	1	0	20
11	DeShields, Diamond	g	4-12	1-4	2-2	1	1	2	4	11	4	4	3	3	28
14	Carter, Andraya	g	3-7	0-2	2-2	1	1	2	3	8	3	0	0	1	30
00	Reynolds, Jordan		1-2	0-0	1-2	1	1	2	1	3	2	2	0	1	20
01	Moore, Nia		0-3	0-0	2-2	1	2	3	3	2	0	1	0	0	11
20	Cooper, Te'a		6-12	1-1	0-0	0	1	1	2	13	1	3	0	0	24
33	Middleton, Alexa		0-1	0-0	0-0	1	1	2	1	0	0	2	0	1	11
Team					0	2	2								
Totals			22-54	2-8	12-17	12	17	29	20	58	15	15	5	8	200

FG % 1st Half: 13-32 40.6% 2nd half: 9-22 40.9% Game: 22-54 40.7%
3FG % 1st Half: 1-4 25.0% 2nd half: 1-4 25.0% Game: 2-8 25.0%
FT % 1st Half: 1-1 100.0 2nd half: 11-16 68.8% Game: 12-17 70.6%

Officials: Sue Blauch, Carla Fountain, Kevin Pethel
Technical fouls: VANDERBILT-Marqu'es Webb. Tennessee-None.
Attendance: 11159

Score by periods	1st	2nd	3rd	4th	Total
VANDERBILT	10	15	7	17	49
Tennessee	17	11	16	14	58

GAME 19: Vanderbilt vs. Alabama

GAME 20: Vanderbilt vs. Kentucky

MEMORIAL GYM

HOME SWEET HOME

Memorial Gymnasium, the Southeastern Conference's most historic venue for college basketball, serves as the home court for the Vanderbilt Commodores. Dedicated in 1952 as a memorial to all Vanderbilt men and women who served in World War II, the arena was built as a combination gymnasium and concert hall by the late master architect Edwin Keeble.

Six decades later, the unique style of Memorial Gymnasium — with its benches situated on the baselines, a playing court that sits above portions of the crowd and deafening acoustics — continues to make the Commodores' home a dreaded stop for opponents. "Memorial Magic," with its capacity crowds, overflowing student section and lively pep band have assisted in numerous Commodore victories. In the stands, fans across Middle Tennessee have helped Memorial Gymnasium (capacity 14,316) rank among the NCAA's Top 30 attendance leaders on numerous occasions.

On the floor, Vanderbilt has a 447-107 record at home, winning 81.3 percent of its games, and has only had one losing season at home (1982-83).

When the 2012-13 season tipped off, Memorial Gym featured a new video board, installed during the summer of 2012. The display, manufactured by Utah's Young Electric Sign Company, features four screens that measure 16 feet by 9 feet and includes a 2 foot tall LED display that wraps around the bottom of the board.

Before the 2008-09 season, Vanderbilt's locker rooms, the video room, the training room and media room were renovated and are now state-of-the-art. The floor was also replaced before the 08-09 season. During the 2009-10 season, the building received new championship banners.

In 2002, a \$25 million renovation of Memorial Gymnasium was completed, highlighted by yet another one-of-a-kind feature. Connected to the facility sits a new practice gym that includes a three cross-court playing floor, coaching offices, a donor room and a Hall of Champions. Other aspects of the renovation included upgrades of the seating areas, private suites, a new lighting and sound system and a new court design.

In all, Memorial Gym has been expanded three times. Constructed with a seating capacity of 6,583, the University saw its first need to increase seating in 1965 with the addition of two north-side balconies. Two years later, a pair of balancing balconies were erected on the south side of the gym and dubbed "The Balconies That Clyde Lee Built."

Capacity has fluctuated throughout the history of the building. It reached its highest number of 15,646 in 1969 when 4,000 seats were added in the east and west ends. When chairback seats in the end zones and suites on the north side were installed in the late 1990s capacity lowered to 14,168. Shortly thereafter, university officials removed portions of media press row on the south side in an effort to expand the student section by nearly 150 seats. Official capacity is now 14,326.



YEAR-BY-YEAR HOME RECORD

YEAR	W-L
2014-15	9-6
2013-14	12-5
2012-13	12-2
2011-12	18-2
2010-11	12-3
2009-10	12-4
2008-09	15-1
2007-08	13-3
2006-07	15-1
2005-06	13-3
2004-05	11-3
2003-04	11-3
2002-03	11-2
2001-02	18-1
2000-01	16-2
1999-00	11-3
1998-99	9-5
1997-98	12-2
1996-97	13-1
1995-96	13-2
1994-95	16-1
1993-94	14-2
1992-93	15-1
1991-92	13-2
1990-91	11-3
1989-90	15-2
1988-89	10-1
1987-88	12-2
1986-87	15-2
1985-86	11-3
1984-85	6-4
1983-84	9-3
1982-83	5-6
1981-82	10-4
1980-81	6-5
1979-80	6-5
1978-79	7-5
1977-78	10-2
TOTAL: 447-107	

ATTENDANCE

Vanderbilt has ranked among the top attendance draws in women's basketball over the years. Here is a year-by-year look at VU's home attendance figures, including where the team has ranked nationally the 1999-2000 season.

Year	Games	Total	Average	Nat'l Rank
2014-2015	15	53,280	3,552	30th
2013-2014	17	66,338	3,902	25th
2012-2013	14	56,309	4,022	24th
2011-2012	20	82,261	4,113	23rd
2010-2011	15	68,828	4,589	20th
2009-2010	16	69,521	4,345	21st
2008-2009	16	76,150	4,759	18th
2007-2008	17	91,279	5,369	17th
2006-2007	16	72,215	4,513	23rd
2005-2006	16	65,693	4,106	23rd
2004-2005	14	51,682	3,692	31st
2003-2004	14	44,352	3,168	33rd
2002-2003	13	57,709	4,439	21st
2001-2002	19	90,800	4,779	16th
2000-2001	18	50,650	2,814	36th
1999-2000	14	44,982	3,213	30th
1998-1999	14	65,046	4,646	
1997-1998	14	91,056	6,504	
1996-1997	14	67,967	4,854	
1995-1996	15	88,151	5,877	
1994-1995	17	69,788	4,105	
1993-1994	14	73,686	5,253	
1992-1993	14	67,871	4,848	
1991-1992	15	36,266	2,418	
1990-1991	14	20,205	1,443	
1989-1990	17	25,887	1,522	
1988-1989	11	14,265	1,297	
1987-1988	13	7,324	563	
1986-1987	17	12,248	721	
1985-1986	14	5,750	411	
1984-1985	10	4,450	445	
1983-1984	12	8,664	722	
1982-1983	11	6,950	632	
1981-1982	14	6,310	451	
1980-1981	10	2,525	253	

Memorial Gym Women's Basketball Crowds Over 8,000

Rank	Attendance	Opponent	Date
1.	15,317	Tennessee	1/30/1993
2.	15,311	Tennessee	2/7/1999
3.	15,187	Tennessee	2/25/1996
4.	14,848	Tennessee	2/16/1998
5.	14,316	Tennessee	2/17/2008
6.	14,168	Tennessee	2/16/2002
7.	13,227	Tennessee	12/31/1994
8.	13,127	Tennessee	1/19/2006
9.	12,645	Tennessee	1/31/1994
10.	12,417	Tennessee	1/19/1997
11.	12,131	Ohio State	1/6/1993
12.	12,034	Tennessee	2/9/2012
13.	12,009	Tennessee	1/25/2007
14.	11,401	Tennessee	2/2/2003
15.	11,386	Tennessee	2/14/2011
16.	10,561	Tennessee	2/15/2004
17.	10,154	Tennessee	1/24/2013
18.	10,149	Tennessee	2/24/2000
19.	9,712	Penn State	1/5/2002
20.	9,651	Tennessee	1/16/2005
21.	9,650	Tennessee	1/11/2009
22.	8,919	Holy Cross	1/4/2003
23.	8,511	Florida	1/14/2007
24.	8,412	South Carolina	1/9/2005
25.	8,176	Georgia	2/16/1996

VANDERBILT SEC STATS



2015-16 Vanderbilt Basketball VANDERBILT Combined Team Statistics (as of Jan 21, 2016) Conference games



RECORD:	OVERALL	HOME	AWAY	NEUTRAL
ALL GAMES	2-3	1-1	1-2	0-0
CONFERENCE	2-3	1-1	1-2	0-0
NON-CONFERENCE	0-0	0-0	0-0	0-0

#	Player	gp-gs	min	avg	Total		3-Point		F-Throw		Rebounds				pf	dq	a	to	blk	stl	pts	avg
					fg-fga	fg%	3fg-fga	3fg%	ft-fga	ft%	off	def	tot	avg								
33	Christa Reed	5-5	142	28.4	20-45	.444	11-25	.440	6-11	.545	6	8	14	2.8	12	0	7	11	0	3	57	11.4
01	Rebekah Dahlman	5-4	139	27.8	14-34	.412	6-21	.286	12-12	1.000	3	14	17	3.4	11	0	7	11	0	7	46	9.2
25	Morgan Batey	5-0	106	21.2	14-27	.519	0-0	.000	7-8	.875	3	11	14	2.8	6	0	6	9	0	4	35	7.0
03	Rachel Bell	5-5	118	23.6	13-40	.325	3-15	.200	4-5	.800	4	9	13	2.6	3	0	3	9	2	2	33	6.6
23	Minta Spears	5-5	188	37.6	8-28	.286	3-15	.200	14-16	.875	0	15	15	3.0	13	0	21	11	1	5	33	6.6
15	Jasmine Jenkins	5-1	94	18.8	8-24	.333	1-3	.333	9-10	.900	4	13	17	3.4	6	0	9	12	0	3	26	5.2
22	Marqu'es Webb	5-1	91	18.2	7-15	.467	0-0	.000	3-12	.250	12	20	32	6.4	19	2	2	10	3	4	17	3.4
35	Kendall Shaw	4-0	27	6.8	5-10	.500	0-0	.000	3-4	.750	2	2	4	1.0	4	0	0	0	2	0	13	3.3
44	Rayte'a Long	5-4	59	11.8	6-10	.600	0-1	.000	0-0	.000	9	3	12	2.4	10	0	2	6	0	2	12	2.4
24	Kristen Gaffney	4-0	36	9.0	1-6	.167	0-2	.000	0-0	.000	1	5	6	1.5	0	0	3	4	0	1	2	0.5
Team											7	9	16					3				
Total.....		5	1000		96-239	.402	24-82	.293	58-78	.744	51	109	160	32.0	84	2	60	86	8	31	274	54.8
Opponents.....		5	1000		102-256	.398	20-60	.333	50-83	.602	57	99	156	31.2	92	-	58	76	13	41	274	54.8

TEAM STATISTICS	VANDY	OPP	Date	Opponent	Score	Att.
SCORING	274	274	* 1/3/16	at Ole Miss	L 52-55	1283
Points per game	54.8	54.8	* 01/07/16	SOUTH CAROLINA	L 61-71	2547
Scoring margin	+0.0	-	* 01/10/16	at Alabama	W 54-48	3023
FIELD GOALS-ATT	96-239	102-256	* 01/14/16	LSU	W 58-42	2332
Field goal pct	.402	.398	* 01/21/16	at Tennessee	L 49-58	11159
3 POINT FG-ATT	24-82	20-60	* - Conference game			
3-point FG pct	.293	.333				
3-pt FG made per game	4.8	4.0				
FREE THROWS-ATT	58-78	50-83				
Free throw pct	.744	.602				
F-Throws made per game	11.6	10.0				
REBOUNDS	160	156				
Rebounds per game	32.0	31.2				
Rebounding margin	+0.8	-				
ASSISTS	60	58				
Assists per game	12.0	11.6				
TURNOVERS	86	76				
Turnovers per game	17.2	15.2				
Turnover margin	-2.0	-				
Assist/turnover ratio	0.7	0.8				
STEALS	31	41				
Steals per game	6.2	8.2				
BLOCKS	8	13				
Blocks per game	1.6	2.6				
ATTENDANCE	4879	15465				
Home games-Avg/Game	2-2440	3-5155				
Neutral site-Avg/Game	-	0-0				

Score by Periods	1st	2nd	3rd	4th	Totals
VANDERBILT	59	70	64	81	274
Opponents	62	57	70	85	274

VANDERBILT CUMULATIVE STATS



2015-16 Vanderbilt Basketball VANDERBILT Combined Team Statistics (as of Jan 21, 2016) All games



RECORD:	OVERALL	HOME	AWAY	NEUTRAL
ALL GAMES	13-5	9-1	3-4	1-0
CONFERENCE	2-3	1-1	1-2	0-0
NON-CONFERENCE	11-2	8-0	2-2	1-0

#	Player	gp-gs	min	avg	Total		3-Point		F-Throw		Rebounds											
					fg-fga	fg%	3fg-fga	3fg%	ft-fga	ft%	off	def	tot	avg	pf	dq	a	to	blk	stl	pts	avg
33	Christa Reed	18-18	469	26.1	69-152	.454	37-84	.440	24-30	.800	14	45	59	3.3	47	0	28	27	3	18	199	11.1
03	Rachel Bell	17-15	378	22.2	64-153	.418	24-71	.338	10-14	.714	9	18	27	1.6	19	0	12	30	3	8	162	9.5
01	Rebekah Dahlman	17-5	385	22.6	53-111	.477	24-63	.381	31-35	.886	9	50	59	3.5	25	0	21	32	0	13	161	9.5
15	Jasmine Jenkins	18-14	405	22.5	53-124	.427	5-13	.385	32-46	.696	19	37	56	3.1	22	0	40	28	0	17	143	7.9
25	Morgan Batey	18-4	399	22.2	49-94	.521	1-2	.500	24-33	.727	18	40	58	3.2	30	2	34	37	2	28	123	6.8
22	Marqu'es Webb	18-2	251	13.9	45-78	.577	0-0	.000	23-45	.511	41	49	90	5.0	43	2	6	36	7	9	113	6.3
23	Minta Spears	18-18	601	33.4	29-75	.387	12-40	.300	30-34	.882	4	43	47	2.6	40	1	83	45	3	22	100	5.6
24	Kristen Gaffney	17-0	310	18.2	26-57	.456	2-12	.167	14-25	.560	18	37	55	3.2	13	0	30	15	3	20	68	4.0
44	Rayte'a Long	18-13	273	15.2	27-40	.675	0-1	.000	16-27	.593	30	42	72	4.0	36	0	8	20	2	9	70	3.9
35	Kendall Shaw	15-1	103	6.9	14-30	.467	0-0	.000	7-12	.583	6	15	21	1.4	21	0	3	12	7	1	35	2.3
41	Miaya Seawright	4-0	13	3.3	1-1	1.000	0-0	.000	0-0	.000	0	1	1	0.3	1	0	1	0	0	1	2	0.5
12	Myka Dancy	4-0	13	3.3	0-0	.000	0-0	.000	0-0	.000	0	1	1	0.3	1	0	0	1	0	0	0	0.0
Team											40	35	75				9					
Total.....		18	3600		430-915	.470	105-286	.367	211-301	.701	208	413	621	34.5	298	5	266	292	30	146	1176	65.3
Opponents.....		18	3600		326-875	.373	108-315	.343	166-251	.661	168	307	475	26.4	347	-	191	319	50	128	926	51.4

TEAM STATISTICS	VANDY	OPP	Date	Opponent	Score	Att.
SCORING	1176	926	11/15/15	MISS. VALLEY STATE	w 89-39	2264
Points per game	65.3	51.4	11/18/15	at Dayton	L 56-81	1637
Scoring margin	+13.9	-	11/21/15	at Green Bay	L 56-58	2351
FIELD GOALS-ATT	430-915	326-875	11/23/15	PRESBYTERIAN	w 56-38	5351
Field goal pct	.470	.373	11/27/15	AUSTIN PEAY	w 73-56	2447
3 POINT FG-ATT	105-286	108-315	11/28/15	OHIO	w 62-59	2462
3-point FG pct	.367	.343	11/30/15	AIR FORCE	w 86-29	2213
3-pt FG made per game	5.8	6.0	12/3/15	at DREXEL	w 74-64	539
FREE THROWS-ATT	211-301	166-251	12/05/15	ETSU	w 65-39	2264
Free throw pct	.701	.661	12/10/15	TROY	w 97-43	2528
F-Throws made per game	11.7	9.2	12/21/15	UT MARTIN	w 64-61	2574
REBOUNDS	621	475	^ 12/29/15	vs New Mexico State	w 71-45	832
Rebounds per game	34.5	26.4	^ 12/30/15	at Fordham	w 53-40	622
Rebounding margin	+8.1	-	* 1/3/16	at Ole Miss	L 52-55	1283
ASSISTS	266	191	* 01/07/16	SOUTH CAROLINA	L 61-71	2547
Assists per game	14.8	10.6	* 01/10/16	at Alabama	w 54-48	3023
TURNOVERS	292	319	* 01/14/16	LSU	w 58-42	2332
Turnovers per game	16.2	17.7	* 01/21/16	at Tennessee	L 49-58	11159
Turnover margin	+1.5	-				
Assist/turnover ratio	0.9	0.6				
STEALS	146	128				
Steals per game	8.1	7.1				
BLOCKS	30	50				
Blocks per game	1.7	2.8				
ATTENDANCE	26982	21446				
Home games-Avg/Game	10-2698	7-2945				
Neutral site-Avg/Game	-	1-832				

* - Conference game

Score by Periods	1st	2nd	3rd	4th	Totals
VANDERBILT	271	277	313	315	1176
Opponents	198	196	263	269	926