



SEASON OUTLOOK

Vanderbilt basketball, under the direction of head coach Kevin Stallings, is hoping to capitalize on a hot finish to the end of 2012-13 in 2013-14, Stallings' 15th at the helm in Nashville. The Commodores won six out of their last eight games a year ago and advanced to the SEC Tournament semifinals for the fourth consecutive season, beating Kentucky in the quarterfinals.

The Commodores, who did not have a senior on the roster a year ago and struggled early offensively but gained ground as the year advanced, relied on their persistent and steady defense throughout the year until the offense came along. Vanderbilt only allowed 60.1 points per game, and posted their best total defense points per game average since the 1950-51 campaign, while limiting opponents to only 40.7% from the floor and 31.1% from three. The length and quickness of Vanderbilt's guards provided for a stiff perimeter test for most teams a year ago, and the same can be said about this year's team.

Vanderbilt returns three starters and eight letterwinners from a year ago, and welcome freshmen Luke Kornet and Damian Jones, both 6'10, to the fold this year.

Stallings, named the 10th-best X and O coach in the nation by ESPN.com's Jeff Goodman, garnered his 400th career win against Kentucky in the quarterfinals of the SEC Tournament and is one win away from tying legendary Commodore coach Roy Skinner as the program's all-time winningest coach. Stallings has 277 career wins at Vanderbilt entering the 2013-14 season.

Guards

The Commodores return junior shooting guard **Dai-Jon Parker**, who averaged 7.2 points and 4.4 rebounds in his sophomore campaign, but Vanderbilt must replace the services of leading scorer and point guard Kedren Johnson, who has been suspended for the 2013-14 season, and shooting guard Kevin Bright, who returned to his native Germany in the offseason to sign a professional contract. Johnson led the team with an average of 13.5 points per game, and Bright was the team's leading three-point shooter and rebounder.

Stepping into Johnson's shoes at the point guard slot is sophomore guard **Eric McClellan**, who transferred from the University of Tulsa after his freshman campaign. The 6'4 guard, who practiced with the team last season, started in 16 games at Tulsa and played in 30, averaging 8.5 points per game for the Golden Hurricane.

With the departure of Johnson and Bright, Parker, from Baton Rouge, La., must pick up the scoring load. The junior showed signs at the end of the 2012-13 season of doing just that, when he averaged 12.3 points per game in the team's last four contests, while also averaging 6.3 rebounds in that same span.

Also returning for Vanderbilt is senior point guard **Kyle Fuller**, who showed flashes of brilliance for the Commodores in his junior season. Fuller ended the 2012-13 as the team's third-leading scorer, averaging 8.7 points per game, while scoring in double figures 13 times, including a 25-point performance in an overtime win at Xavier.



Senior guard Kyle Fuller scored in double-figures in 13 games in 2012-13, including a 25-point performance in a VU win at Xavier.

SEASON OUTLOOK

Walk on guards **Carter Josephs** and **Nathan Watkins**, both sophomores, also return in 2013-14.

Forwards

The Commodores have assimilated a number of movable parts at the three and four positions, beginning with senior **Rod Odom**, who averaged 10.4 points per game in 32 starts at the power forward position. Odom, who has gained confidence in his outside shot and his ability to get to the rim this offseason, will see some time at the three position as well.

Also returning at forward for Vanderbilt is redshirt junior **James Siakam** and junior **Shelby Moats**. Siakam, an explosive offensive rebounder and athletic presence around the rim, played in 26 games last season, and averaged 2.0 points and 1.9 rebounds. Moats, a four-man who can knock down jump shots from the perimeter, also returns after averaging 3.0 points and 2.9 rebounds per game. Both will be expected to contribute for the Commodores this season.

New to the fold is 6'10 freshman **Luke Kornet**, who is the son of a former Commodore great in Frank Kornet, who played in the late 80's and then the NBA. Luke, who grew seven inches in his senior season of high school and has guard skills and an outside shot, signed with Vanderbilt in the spring after averaging 15 points, eight rebounds, three blocks, and three steals in his senior season at Liberty Christian School in Argyle, Texas.

Center

Redshirt junior **Josh Henderson** returns at the center position after averaging 5.4 points and 3.4 rebounds in 21 starts last season. Henderson, at 6'11, is very skilled offensively with a 15-foot range on his jump shot, and his defense and footwork has drastically improved since his arrival on campus.

Henderson will be pushed by incoming freshman **Damian Jones**, a 6'10 athletic big man from Baton Rouge, La. Jones, who won back-to-back state championships with his Scotlandville Magnet High School team, averaged 15.4 points, 8.0 rebounds, 4.0 blocks, and 2.0 assists in his senior campaign, and was named the Louisiana 5A Player of the Year for his exploits last season.

European Tour

In August, the Commodores ventured to Greece and Italy for a 10-day tour of the two countries, which included two games against a French Division I All-Star team in Greece and two against an Italian Division III squad in Rome. Vanderbilt came away 4-0 on the trip.

Freshman Damian Jones, who only played in the two games in Greece because of a school obligation, led the team with 13 points per game. In four games, Eric McClellan averaged 12.3 points per game, Rod Odom 11.5 points per contest, Dai-Jon Parker 10.3 per game, and Josh Henderson 10.0 points per game.



Senior forward Rod Odom, who started 32 of 33 games in 2012-13, returns for the Commodores.



2013-14 QUICK FACTS

Quick Facts

| | |
|-----------------------|-----------------------------|
| Location | Nashville, Tenn. |
| Founded | 1873 |
| Conference | Southeastern (East) |
| Enrollment | 6,738 |
| Nickname | Commodores |
| Colors | Black and Gold |
| Home Arena | Memorial Gymnasium (14,316) |
| Chancellor | Nicholas Zeppos |
| Vice Chancellor | David Williams II |
| Faculty Rep | Richard McCarty |

Basketball Staff

| | |
|---------------------------------------|--|
| Head Coach | Kevin Stallings |
| Record Overall | 400-239 (20) |
| Record at Vanderbilt | 277-176 (14) |
| Assistant Coaches..... | David Cason, Yanni Hufnagel, Tom Richardson, |
| Director of Operations..... | Dan Cage |
| Director of Video Operations | Julian Terrell |
| Athletic Trainer..... | Shannon Gordon |
| Academic Counselor | Neal Clark |
| Administrative Assistant..... | Debbie Green |
| Strength and Conditioning Coach | Garry Christopher |
| Office Number | (615) 322-6530 |

Athletic Communications

| | |
|------------------------------|---------------------------|
| Men's Basketball SID | Andy Boggs |
| Media Relations Address..... | 2601 Jess Neely Dr. |
| | Nashville, TN 37212 |
| Office Phone | (615) 343-1847 |
| Office Fax | (615) 343-7064 |
| E-Mail | Andy.Boggs@Vanderbilt.edu |
| Memorial Gym Press Row..... | (615) 320-0436 |
| Internet Site | www.VUCommodores.com |
| Twitter Feed | @VandyMBB |

History

| | |
|-----------------------------------|---|
| Overall record | 1,516-1,062 |
| NCAA Tournament Appearances | 13 |
| Tournament Record | 10-14 (.416) |
| Total Tournament Games | 24 |
| Last Appearance | 2012; Lost to Wisconsin |
| | in the Third Round of East Regional |
| Best Finishes at NCAA's | Elite 8 (1965: field of 23) |
| | Sweet 16 (1988, 1993: field of 64; 2004, 2007: field of 65) |
| NIT Appearances..... | 11 (1983, 1987, 1990, 1992, 1994 |
| | 1996, 1998, 2000, 2002, 2005, 2006) |
| NIT Record..... | 18-11 (.621) |
| Total NIT Games..... | 29 |
| Last Appearance | 2006; Lost at Notre Dame in First Round |
| Best Finishes at NIT | Champion (1990); Runner-Up (1994) |

Team Information

| | |
|------------------------------------|-----------|
| 2012-13 Record | 16-17 |
| SEC Record/Finish | 8-10/10th |
| Home Record | 9-6 |
| Away Record | 4-8 |
| Neutral Record | 3-3 |
| Postseason | NA |
| Final AP Ranking | NA |
| Starters Returning/Lost..... | 3/2 |
| Letterwinners Returning/Lost | 8/6 |
| Newcomers | 3 |

Returning Players (2012-13 averages)

| Name | P | Ht | Wt | CL | Pts | Rebs | A/B/S |
|----------------|---|------|-----|-----|------|------|-------|
| Rod Odom | F | 6'9 | 212 | Sr. | 10.4 | 4.5 | 0.8b |
| Kyle Fuller | G | 6'1 | 188 | Sr. | 8.7 | 2.3 | 2.0a |
| Dai-Jon Parker | G | 6'3 | 190 | Jr. | 7.2 | 4.4 | 2.4a |
| Josh Henderson | C | 6'11 | 231 | Jr. | 5.4 | 3.4 | 0.9b |
| Shelby Moats | F | 6'8 | 227 | Jr. | 3.0 | 2.9 | 0.7a |
| James Siakam | F | 6'7 | 215 | Jr. | 2.0 | 1.9 | 0.3a |
| Carter Josephs | G | 6'0 | 185 | So. | 0.3 | 0.0 | 0.0a |
| Nathan Watkins | G | 6'5 | 195 | So. | 0.0 | 0.2 | 0.2s |

Letterwinners Lost

| Name | P | Ht | Wt | CL | Pts | Rebs | A/B/S |
|----------------|---|-----|-----|-----|------|------|-------|
| Kedren Johnson | G | 6'4 | 215 | Jr. | 13.5 | 3.5 | 3.6a |
| Kevin Bright | G | 6'5 | 210 | So. | 6.9 | 5.5 | 1.2a |
| Sheldon Jeter | F | 6'7 | 215 | So. | 5.5 | 3.4 | 0.5s |
| A.J. Astroth | G | 6'6 | 200 | So. | 0.4 | 0.6 | 0.3a |
| Alex Gendelman | G | 6'0 | 175 | So. | 0.0 | 0.0 | 0.0a |
| Andris Kehris | F | 6'7 | 215 | So. | 0.0 | 0.5 | 0.0a |

Newcomers

| Names | Ht | Wt | Hometown | Previous School |
|----------------|------|-----|------------------|---------------------|
| Damian Jones | 6'10 | 235 | Baton Rouge, La. | Scotlandville HS |
| Luke Kornet | 6'10 | 216 | Lantana, Texas | Liberty Christian |
| Eric McClellan | 6'4 | 188 | Austin, Texas | University of Tulsa |



2013-14 ROSTER

2013-14 Roster

| No. | Name | Pos. | Ht. | Wt. | Cl.-Yr | Hometown (Previous School) |
|-----|----------------|------|------|-----|-----------|--|
| 0 | Rod Odom | F | 6-9 | 212 | Sr.- 4th | Central Islip, N.Y. (Middlesex School (Mass.)) |
| 1 | Eric McClellan | G | 6-4 | 188 | R-So.-3rd | Austin, Texas (University of Tulsa) |
| 3 | Luke Kornet | F | 6-10 | 216 | Fr.-1st | Lantana, Texas (Liberty Christian) |
| 10 | Nathan Watkins | G | 6-5 | 195 | So.-2nd | Brentwood, Tenn. (Ensworth School) |
| 11 | Kyle Fuller | G | 6-1 | 188 | Sr.-4th | Moreno Valley, Calif. (Rancho Verde) |
| 14 | Carter Josephs | G | 6-0 | 185 | So.-2nd | San Antonio, Texas (Tom C. Clark) |
| 24 | Dai-Jon Parker | G | 6-3 | 190 | Jr.-3rd | Baton Rouge, La. (Milton (Ga.)) |
| 30 | Damian Jones | F/C | 6-10 | 235 | Fr.-1st | Baton Rouge, La. (Scotlandville Magnet) |
| 34 | Shelby Moats | F | 6-8 | 227 | Jr.-3rd | Waconia, Minn. (Waconia) |
| 35 | James Siakam | F | 6-7 | 215 | R-Jr.-4th | Douala, Cameroon (Brehm Prep (Ill.)) |
| 40 | Josh Henderson | C | 6-11 | 231 | R-Jr.-4th | Roanoke, Va. (Cave Spring) |

COACHING STAFF

Head Coach **Kevin Stallings** (Purdue, 1982) - 15th
 Assistant Coach **David Cason** (Illinois State, 1995) - 3rd
 Assistant Coach **Yanni Hufnagel** (Cornell, 2006) - 1st
 Assistant Coach **Tom Richardson** (St. Xavier (Ill.), 1977) - 11th
 Director of Operations..... **Dan Cage** (Vanderbilt, 2007) - 4th
 Director of Video Operations .. **Julian Terrell** (Vanderbilt, 2006) - 1st

SUPPORT STAFF

Athletic Communications Dir. **Andy Boggs** (Florida State, 1998)
 Academic Support..... **Neal Clark** (Kentucky, 1992)
 Athletic Trainer..... **Shannon Gordon** (Indiana State, 1992)
 Strength and Conditioning..... **Garry Christopher** (Baylor, 2008)

PRONUNCIATION GUIDE

David Cason **KAY-Sahn**
 Dai-Jon Parker..... **DAY-Jon**
 James Siakam..... **See-OCK-em**

ROSTER BY CLASS

Seniors (2)

Kyle Fuller Moreno Valley, Calif.
Rod Odom Central Islip, N.Y.

Juniors (4)

Josh Henderson Roanoke, Va.
Shelby Moats..... Waconia, Minn.
Dai-Jon Parker Baton Rouge, La.
James Siakam Douala, Cameroon

Sophomores (3)

Carter Josephs San Antonio, Texas
Eric McClellan Austin, Texas
Nathan Watkins Nashville, Tenn.

Freshman (2)

Damian Jones Baton Rouge, La.
Luke Kornet Lantana, Texas



PLAYER INFORMATION



KYLE FULLER

11

Senior, Guard
6'1" 188 lbs.
Moreno Valley, Calif.
Rancho Verde HS

GENERAL ★ Point guard who played in all 33 games and started 14 as a junior in 2012-13...Averaged 8.7 points per game.

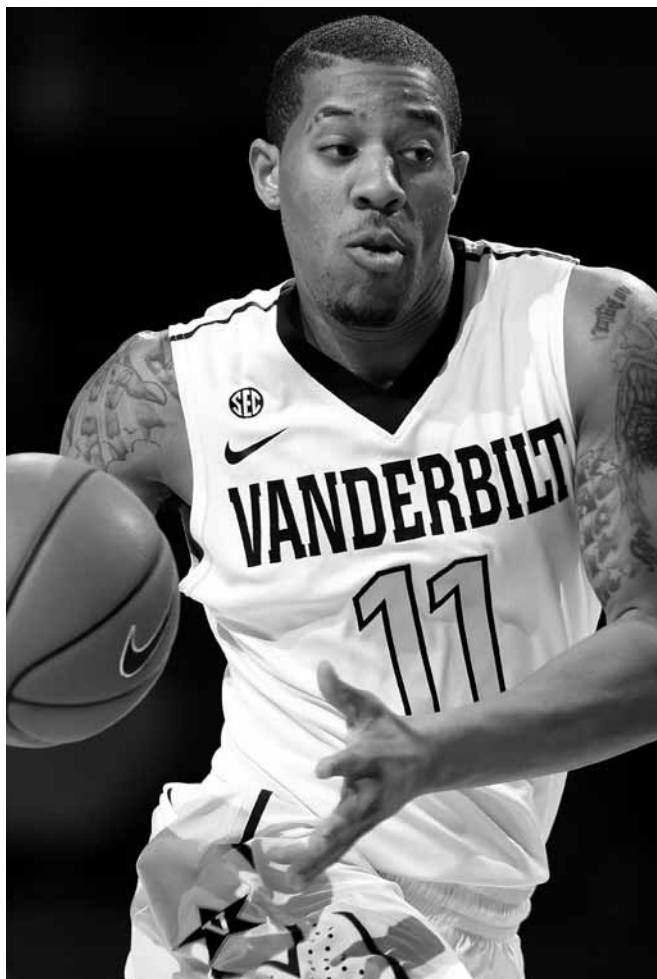
2012-13 (JUNIOR) ★ Played in all 33 games and made 14 starts...Averaged 8.7 points, 2.3 rebounds, and 1.9 assists per game...Scored in double figures in 13 contests, including a career-high 25 point performance at Xavier (12/6) in an overtime win...He won SEC Player of the Week for his performance against the Musketeers, while also added career-high three steals, a career-high in free throws made (7) and field goals made (8)...Also scored all 12 of the team's points in overtime...Posted a 19-point effort in win over Arkansas in second round of SEC Tournament (3/14), while adding 10 points in a win over Kentucky in SEC Quarterfinals (3/15)...Tied a career high with six assists on two occasions - vs. Nicholls State (11/10) and vs. Texas A&M (2/20)...Grabbed career-high six rebounds against Davidson (11/22) and Cornell (12/17).

2011-12 (SOPHOMORE) ★ Played in 18 games and averaged 0.9 points and 0.9 assists per contest...Scored a season-high five points against Longwood (12/21)...Grabbed a season-best four rebounds in win over Lafayette (12/21)...Made the first start of his career against Bucknell (11/15)...Had season-high four assists against Monmouth (11/25) and Lafayette (12/21).

2010-11 (FRESHMAN) ★ Played in all 34 games, and averaged 1.9 points and 1.6 assists per game backing up Brad Tinsley at the point guard position...Tied a career high with four rebounds at Georgia (2/16)...Made career-high two threes against Alabama (2/10), and tied a career-high in scoring with six points...Tallied four points, four assists, and three boards in career-high 22 minutes vs. St. Mary's (1/22)...Had career-high five assists vs. Davidson (1/2)...Made first career three-pointer vs. WKU (12/1)...Recorded a then-career-high three assists vs. Grambling (11/24) and WKU (12/1)...Scored six points, had two assists, a block and a steal in 17 minutes of action vs. Presbyterian.

HIGH SCHOOL ★ Averaged 27.6 points, eight assists, six rebounds, and four steals per game as a point guard at Rancho Verde High School...Winningest player in Rancho Verde history, was a four-year captain, and a three-year starter...Third all-time leading scorer at Rancho Verde...Won Inland Valley Conference title four times...Named first team All-C.I.F. Division IAA selection and the MVP of the Inland Valley Conference in 2010...Posted a 3.4 GPA at Rancho Verde...Played alongside Michael Snaer, who plays basketball at Florida State.

PERSONAL ★ Kyle Alejandro Fuller, Jr.... Born Jan. 27, 1992... Son of Kyle Sr. (deceased) and Olga Coronado Fuller... Has a brother, Khalil (17)... Major is Sociology... Nickname is Zoomey... Chose the Commodores over UCLA, USC, Cal, and Marquette...Advice to youngsters: "It doesn't matter how high you're ranked if you practice every day and ball out."



Fuller's Overall Statistics at Vanderbilt

| Year | GP | GS | Min | Avg | FG | FGA | Pct | 3FG | 3FGA | Pct | FT | FTA | Pct | Off | Def | Tot | Avg | PF | FO | Ass | TO | Blk | Stl | Pts | Avg |
|--------------|-----------|-----------|-------------|-------------|------------|------------|-------------|-----------|------------|-------------|-----------|------------|-------------|-----------|------------|------------|------------|-----------|----------|------------|-----------|----------|-----------|------------|------------|
| 2010-11 | 34 | 0 | 499 | 14.7 | 24 | 78 | .308 | 7 | 29 | .241 | 8 | 16 | .500 | 8 | 38 | 46 | 1.4 | 44 | 0 | 55 | 34 | 1 | 13 | 63 | 1.9 |
| 2011-12 | 18 | 1 | 125 | 6.9 | 6 | 22 | .273 | 0 | 8 | .000 | 5 | 8 | .625 | 2 | 14 | 16 | 0.9 | 7 | 0 | 17 | 10 | 0 | 5 | 17 | 1.5 |
| 2012-13 | 33 | 14 | 866 | 26.2 | 96 | 248 | .387 | 28 | 103 | .272 | 66 | 94 | .702 | 5 | 72 | 77 | 2.3 | 45 | 0 | 65 | 47 | 2 | 20 | 286 | 8.7 |
| TOTAL | 85 | 15 | 1490 | 17.5 | 126 | 348 | .362 | 35 | 140 | .250 | 79 | 118 | .669 | 15 | 124 | 139 | 1.6 | 96 | 0 | 137 | 91 | 3 | 38 | 366 | 4.3 |

Fuller's SEC Statistics at Vanderbilt

| Year | GP | GS | Min | Avg | FG | FGA | Pct | 3pt | 3ptA | Pct | FT | FTA | Pct | Off | Def | Tot | Avg | PF | FO | Ass | TO | Blk | Stl | Pts | Avg |
|--------------|-----------|----------|------------|-------------|-----------|------------|-------------|-----------|-----------|-------------|-----------|-----------|-------------|----------|-----------|-----------|------------|-----------|----------|-----------|-----------|----------|-----------|------------|------------|
| 2010-11 | 16 | 0 | 218 | 13.6 | 7 | 28 | .250 | 4 | 8 | .500 | 5 | 10 | .500 | 4 | 18 | 22 | 1.4 | 18 | 0 | 21 | 11 | 0 | 5 | 23 | 1.4 |
| 2011-12 | 8 | 0 | 24 | 3.0 | 1 | 5 | .200 | 0 | 1 | .000 | 1 | 2 | .500 | 0 | 3 | 3 | 0.4 | 0 | 0 | 4 | 3 | 0 | 0 | 3 | 0.4 |
| 2012-13 | 18 | 2 | 393 | 21.8 | 36 | 108 | .333 | 13 | 47 | .277 | 25 | 35 | .714 | 2 | 35 | 37 | 2.1 | 18 | 0 | 30 | 23 | 0 | 6 | 110 | 6.1 |
| TOTAL | 42 | 2 | 635 | 15.1 | 44 | 141 | .312 | 17 | 56 | .304 | 31 | 47 | .660 | 6 | 56 | 62 | 1.5 | 36 | 0 | 55 | 37 | 0 | 11 | 136 | 3.2 |



PLAYER INFORMATION



JOSH HENDERSON

40

R-Junior, Center
6'11" 231 lbs.
Roanoke, Va.
Cave Spring HS

GENERAL ★ Signed in the spring of 2010 with the Commodores...6'11 center chose Vanderbilt over Virginia, Wake Forest, Davidson, Cincinnati, Maryland, and Penn State.

2012-13 (SOPHOMORE) ★ Played in all 33 games and started 21... Averaged 5.4 points and 3.4 rebounds per game...Scored in double figures in seven games, including a career-high 13 points on three occasions - vs. Alabama A&M (12/15), at Tennessee (1/29), and at Kentucky (2/20)...Grabbed career-high seven rebounds vs. William & Mary (1/2)...Blocked career-high three shots vs. Arkansas (2/9) and South Carolina (3/9)...Dished out career-high three assists vs. William & Mary...Had career-best five free throws and seven free throw attempts at Auburn (3/2).

2011-12 (FRESHMAN) ★ Played in only eight games after suffering a stress fracture in his right foot at the end of November...Averaged 2.6 points and 2.9 rebounds per game...Scored a career-high 10 points vs. Monmouth (11/25) - was 4-for-4 from the floor...Also posted a career-best five rebounds against Monmouth...Posted a career-high four assists vs. Bucknell (11/15).

2010-11 (FRESHMAN) ★ Redshirted the 2010-11 season.

HIGH SCHOOL ★ Averaged 20 points, 11 rebounds, four blocks, and four steals per game in his senior season at Cave Spring...His Knights' team won two district titles, two region titles, and two state titles, and captured the Holiday Hoopla tournament in 2010...Named the team's MVP for three years, and was the district, region, and state player of the year for two consecutive years...Was the Timesland Player of the Year...Named All-Roanoke Metro in 2009, and was the 2010 Associated Press Player of the Year...Set school record in career rebounds and blocks, and is second all-time in scoring... Member of the A-B Honor Roll.

PERSONAL ★ Joshua Henderson... Jan. 28, 1992... Son of David and Carol Henderson... Has one brother, Matthew (26), and one sister, Rebecca (24)... Major is Economics... Advice to youngsters: "Find something you're good at and work your hardest to be the best you can, but have fun along the way."



ERIC MCCLELLAN

1

Sophomore, Guard
6'4" 188 lbs.
Austin, Texas
University of Tulsa

GENERAL ★ Point guard who transferred from the University of Tulsa in the spring of 2012, and will be eligible for the Commodores for the 2013-14 season after practicing with team in 2012-13... Averaged 8.5 points, 2.5 rebounds and 2.2 assists in 23.1 minutes per game in 30 contests (16 starts) for the Golden Hurricane.

2012-13 (RS FRESHMAN) ★ Redshirted.

2011-12 (FRESHMAN At Tulsa) ★ Played in 30 games and started 16 contests as a freshman at Tulsa, where he averaged 8.5 points, 2.5 rebounds and 2.2 assists in 23.1 minutes per game...Scored in double digits in 11 games...Scored a career-high 25 points on 7-of-11 shooting from the field, and made a career-high 10 free throws (10-for-13), and added seven rebounds, five assists and two steals in 46 minutes in a triple overtime game against Marshall in the quarterfinals of the C-USA Tournament (3/8)... Matched his career highs with 15 points and two steals, and set a new mark with five assists; made two free throws in the final seconds to help seal a win at Tulane (2/25) ...Scored 14 points with four assists and five rebounds vs. UTEP (1/11)...Made his first start against SMU and produced nine points, nine rebounds and three assists...Scored a then career-high 15 points on 6-of-9 shooting, made a trio of three-pointers and dished three assists vs. Arizona State (12-3).

HIGH SCHOOL ★ Was a three-year letterwinner and three-year starter at Austin High School ...Led his team to a 29-4 record and the District 15-5A championship his senior season, where he averaged 18.9 points, 6.4 rebounds and 4.8 assists...Shot 44-percent from the field, 53-percent from three-point range and 77-percent from the free throw line as a senior...Was named the District 15-5A MVP as a senior and earned first-team all-CenTex accolades...Named an McDonald's All-American nominee.

PERSONAL ★ Eric Jamal McClellan...April 6, 1993...Son of Jackie McClellan and Kimberly Woody...Has three brothers, Brandon Young (26), Chris Young (23) and Justus McClellan (12), and two sisters, Nicole McClellan (19) and Destiny McClellan (16)...Major is Sociology...Advice to youngsters: "Learn from your struggle and never give up. Stay humble, keep God first, work hard, and anything can happen."

Henderson's Overall Statistics at Vanderbilt

| Year | GP | GS | Min | Avg | FG | FGA | Pct | 3FG | 3FGA | Pct | FT | FTA | Pct | Off | Def | Tot | Avg | PF | FO | Ast | TO | Blk | Stl | Pts | Avg |
|--------------|-----------|-----------|------------|-------------|-----------|------------|-------------|----------|----------|-------------|-----------|-----------|-------------|-----------|-----------|------------|------------|-----------|----------|-----------|-----------|-----------|-----------|------------|------------|
| 2011-12 | 8 | 0 | 69 | 8.6 | 8 | 17 | .471 | 0 | 0 | .000 | 5 | 9 | .556 | 12 | 11 | 23 | 2.9 | 15 | 0 | 5 | 5 | 0 | 1 | 21 | 2.6 |
| 2012-13 | 33 | 21 | 678 | 20.5 | 73 | 157 | .465 | 0 | 1 | .000 | 31 | 60 | .517 | 47 | 66 | 113 | 3.4 | 75 | 1 | 27 | 49 | 29 | 18 | 177 | 5.4 |
| TOTAL | 41 | 21 | 747 | 18.2 | 81 | 174 | .466 | 0 | 1 | .000 | 36 | 69 | .522 | 59 | 77 | 136 | 3.3 | 90 | 1 | 32 | 54 | 29 | 19 | 198 | 4.8 |

Henderson's SEC Statistics at Vanderbilt

| Year | GP | GS | Min | Avg | FG | FGA | Pct | 3FG | 3FGA | Pct | FT | FTA | Pct | Off | Def | Tot | Avg | PF | FO | Ast | TO | Blk | Stl | Pts | Avg |
|--------------|-----------|-----------|------------|-------------|-----------|-----------|-------------|----------|----------|-------------|-----------|-----------|-------------|-----------|-----------|-----------|------------|-----------|----------|----------|-----------|-----------|----------|------------|------------|
| 2012-13 | 18 | 10 | 359 | 19.9 | 47 | 91 | .516 | 0 | 1 | .000 | 17 | 32 | .531 | 22 | 37 | 59 | 3.3 | 42 | 1 | 9 | 30 | 17 | 8 | 111 | 6.2 |
| TOTAL | 18 | 10 | 359 | 19.9 | 47 | 91 | .516 | 0 | 1 | .000 | 17 | 32 | .531 | 22 | 37 | 59 | 3.3 | 42 | 1 | 9 | 30 | 17 | 8 | 111 | 6.2 |

McClellan's Overall Statistics

| Year | GP | GS | Min | Avg | FG | FGA | Pct | 3FG | 3FGA | Pct | FT | FTA | Pct | Off | Def | Tot | Avg | PF | FO | Ast | TO | Blk | Stl | Pts | Avg |
|--------------|-----------|-----------|------------|-------------|-----------|------------|-------------|-----------|-----------|-------------|-----------|------------|-------------|-----------|-----------|-----------|------------|-----------|----------|-----------|-----------|----------|-----------|------------|------------|
| 2011-12 | 30 | 16 | 694 | 23.1 | 78 | 183 | .426 | 18 | 47 | .383 | 82 | 111 | .739 | 12 | 63 | 75 | 2.5 | 44 | 0 | 67 | 93 | 5 | 20 | 256 | 8.5 |
| TOTAL | 30 | 16 | 694 | 23.1 | 78 | 183 | .426 | 18 | 47 | .383 | 82 | 111 | .739 | 12 | 63 | 75 | 2.5 | 44 | 0 | 67 | 93 | 5 | 20 | 256 | 8.5 |



PLAYER INFORMATION



SHELBY MOATS

34

Junior, Forward
6'8" 227 lbs.
Waconia, Minn.
Waconia HS

GENERAL ★ Played in 31 games as a sophomore and averaged 3.0 points per game...Powerfully-built power forward who has excellent shooting touch from beyond-the-arc...Was the valedictorian of his Waconia High School senior class in 2011...Named to the 2013 SEC Winter Academic Honor Roll.

2012-13 (SOPHOMORE) ★ Played in 31 games and made nine starts... Averaged 3.0 points and 2.9 rebounds...Best performance of the season came against Kentucky at Memorial Gym (1/10), when he posted career highs in points (9) and rebounds (10)...Made career-high two three's vs. Nicholls State in the season opener (11/10)...Grabbed eight rebounds vs. Ole Miss (1/15).

2011-12 (FRESHMAN) ★ Played in 16 games and averaged 0.5 points and 0.9 rebounds per game...Scored a career-high five points in 12 minutes of action against Lafayette (12/21)...Played a season-high 13 minutes against Monmouth (11/25)...Grabbed a career high six rebounds against Monmouth to go along with three points.

HIGH SCHOOL ★ Four-year varsity letterwinner in basketball, two-year captain, and a two-year letterman in football...Averaged 22 points and 12 rebounds in his senior year at Waconia and ended his career with 1,772 points and 985 rebounds...His Waconia teams claimed three Wright County conference championships and the 2011 team finished third in Class 3A... Individually, Moats was a first-team All-State selection his senior season and was a Parade Third-Team All-American in 2011...Was a four-time all-conference member and a member of the all-state team two times.

PERSONAL ★ Shelby Adam Moats... Born June 12, 1992... Son of Scott and Sheryl Moats... Has a sister, Scotti (23)...Majoring in Economics... Chose the Commodores over Washington State and Northwestern...Advice to youngsters: "Work hard if you want to reach your goals."



ROD ODOM

0

Senior, Forward
6'9" 212 lbs.
Central Islip, N.Y.
Middlesex School (Mass.)

GENERAL ★ Power forward who has played in 103 games in his Vanderbilt career, and started all but one in his junior campaign, when he averaged 10.4 points and 4.5 rebounds per game...Changed number from 45 to 0 for junior season.

2012-13 (JUNIOR) ★ Started in 32 of 33 games, and played in all 33 games...Averaged 10.4 points and 4.5 rebounds per game...Tallied a career-high 20 points on two occasions, at LSU (2/6) and vs. Arkansas in the SEC Tournament (3/14)...Scored in double figures in 14 games this season...

Made a career-high six field goals in six games...Posted career high of eight rebounds in win over South Carolina (3/9) at Memorial Gym...Made career high seven free throws at LSU (2/6)...Dished out career-high four assists in win over Texas A&M (2/16)...Had career-high four blocks against Arkansas in the SEC Tournament, while also tallying a career-best five made threes... Made three or more three pointers in eight contests.

2011-12 (SOPHOMORE) ★ Played in all 36 games, started two contests (vs. Monmouth (11/25) and Indiana State (12/17)) and averaged 2.4 points and 2.0 rebounds...Scored a season-high 10 points vs. Bucknell (11/15)...Grabbed a season-high eight rebounds in the team's opener against Oregon (11/11)... Made a season-high two threes against Bucknell and at South Carolina (1/10).

2010-11 (FRESHMAN) ★ Averaged 3.9 points and 2.6 rebounds per game...Scored in double-figures in five games, and tallied a career-high 12 points against Arkansas (1/29)...Scored 10 points and had five rebounds off of the bench vs. Florida (3/5)...Tallied 11 points at Georgia (2/16), grabbed 5 rebounds, and was 3-of-5 from beyond the arc...Tied a career-high in minutes played with 27...Grabbed a career-high seven rebounds against Kentucky (2/12)...Scored nine points, all on threes, against South Carolina at Memorial Gym (2/5)...tied his career-high in threes made (3)...Tied a then career-high with 11 points vs. WKU; was 3-of-3 from beyond-the-arc...Scored five points in collegiate debut vs. Presbyterian; made his first three-point basket on Brad Tinsley's 10th assist.

Moats' Overall Statistics at Vanderbilt

| Year | GP | GS | Min | Avg | FG | FGA | Pct | 3FG | 3FGA | Pct | FT | FTA | Pct | Off | Def | Tot | Avg | PF | FO | Ast | TO | Blk | Stl | Pts | Avg |
|--------------|-----------|----------|------------|-------------|-----------|------------|-------------|-----------|-----------|-------------|-----------|-----------|-------------|-----------|-----------|------------|------------|-----------|----------|-----------|-----------|----------|-----------|------------|------------|
| 2011-12 | 16 | 0 | 65 | 4.1 | 3 | 13 | .231 | 2 | 11 | .182 | 0 | 1 | .000 | 3 | 12 | 15 | 0.9 | 8 | 0 | 5 | 6 | 3 | 1 | 8 | 0.5 |
| 2012-13 | 31 | 9 | 514 | 16.6 | 35 | 89 | .393 | 11 | 38 | .289 | 13 | 30 | .433 | 38 | 52 | 90 | 2.9 | 67 | 2 | 23 | 21 | 2 | 10 | 94 | 3.0 |
| TOTAL | 47 | 9 | 579 | 12.3 | 38 | 102 | .373 | 13 | 49 | .265 | 13 | 31 | .419 | 41 | 64 | 105 | 2.2 | 75 | 2 | 28 | 27 | 5 | 11 | 102 | 2.2 |

Moats' SEC Statistics at Vanderbilt

| Year | GP | GS | Min | Avg | FG | FGA | Pct | 3FG | 3FGA | Pct | FT | FTA | Pct | Off | Def | Tot | Avg | PF | FO | Ast | TO | Blk | Stl | Pts | Avg |
|--------------|-----------|----------|------------|-------------|-----------|-----------|-------------|----------|-----------|-------------|----------|-----------|-------------|-----------|-----------|-----------|------------|-----------|----------|----------|-----------|----------|----------|-----------|------------|
| 2011-12 | 7 | 0 | 16 | 2.3 | 0 | 2 | .000 | 0 | 2 | .000 | 0 | 0 | .000 | 0 | 4 | 4 | 0.6 | 1 | 0 | 0 | 1 | 3 | 0 | 0 | 0.0 |
| 2012-13 | 16 | 5 | 241 | 15.1 | 18 | 37 | .486 | 4 | 13 | .308 | 3 | 10 | .300 | 18 | 26 | 44 | 2.8 | 29 | 0 | 8 | 10 | 1 | 4 | 43 | 2.7 |
| TOTAL | 23 | 5 | 257 | 11.2 | 18 | 39 | .462 | 4 | 15 | .267 | 3 | 10 | .300 | 18 | 30 | 48 | 2.1 | 30 | 0 | 8 | 11 | 4 | 4 | 43 | 1.9 |

PLAYER INFORMATION



ROD ODOM

O

Senior, Forward
6'9" 212 lbs.
Central Islip, N.Y.
Middlesex School (Mass.)

HIGH SCHOOL ★ Four-year varsity letterwinner in basketball at Middlesex, and a one-year letterman in crew...Was a three-year starter in basketball, and averaged 25.6 points, 14.0 rebounds, 6.0 assists, and 3.1 blocks in his senior season...His Middlesex team made the New England Preparatory School Athletic Council (NEPSAC) semifinals twice...First-team All-Independent School League (ISL) player in his sophomore, junior, and senior seasons...2009 Preseason All-New England Defensive Player of the Year...2010 Gatorade Player of the Year finalist, McDonald's All-American nominee, and Academic All-American.

PERSONAL ★ Roderick Odom... Born Sept., 23, 1991... Son of Roderick Odom and Valerie Dickens... Has a brother, Brandon (17), and a sister, Ariona (15)... Major is Economics... Nickname is O... Chose the Commodores over Harvard, West Virginia, Arizona, UConn, Louisville, Boston College, Michigan, and Oklahoma State...Advice to youngsters: "Work hard and don't let other people put artificial limits on you."



Odom's Overall Statistics at Vanderbilt

| Year | GP | GS | Min | Avg | FG | FGA | Pct | 3FG | 3FGA | Pct | FT | FTA | Pct | Off | Def | Tot | Avg | PF | FO | Ast | TO | Blk | Stl | Pts | Avg |
|--------------|------------|-----------|-------------|-------------|------------|------------|-------------|-----------|------------|-------------|-----------|------------|-------------|------------|------------|------------|------------|------------|----------|-----------|------------|-----------|-----------|------------|------------|
| 2010-11 | 34 | 8 | 533 | 15.7 | 47 | 115 | .409 | 28 | 75 | .373 | 10 | 16 | .625 | 35 | 53 | 88 | 2.6 | 71 | 1 | 12 | 38 | 4 | 15 | 132 | 3.9 |
| 2011-12 | 36 | 2 | 517 | 14.4 | 30 | 77 | .390 | 15 | 40 | .375 | 12 | 22 | .545 | 25 | 48 | 73 | 2.0 | 70 | 0 | 19 | 20 | 8 | 7 | 87 | 2.4 |
| 2012-13 | 33 | 32 | 999 | 30.3 | 109 | 299 | .365 | 55 | 156 | .353 | 70 | 109 | .642 | 57 | 92 | 149 | 4.5 | 74 | 2 | 28 | 43 | 26 | 16 | 343 | 10.4 |
| TOTAL | 103 | 42 | 2049 | 19.9 | 186 | 491 | .379 | 98 | 271 | .362 | 92 | 147 | .626 | 117 | 193 | 310 | 3.0 | 215 | 3 | 59 | 101 | 38 | 38 | 562 | 5.5 |

Odom's SEC Statistics at Vanderbilt

| Year | GP | GS | Min | Avg | FG | FGA | Pct | 3pt | 3ptA | Pct | FT | FTA | Pct | Off | Def | Tot | Avg | PF | FO | Ast | TO | Blk | Stl | Pts | Avg |
|--------------|-----------|-----------|-------------|-------------|-----------|------------|-------------|-----------|------------|-------------|-----------|-----------|-------------|-----------|-----------|------------|------------|-----------|----------|-----------|-----------|-----------|-----------|------------|------------|
| 2010-11 | 16 | 4 | 268 | 16.8 | 24 | 51 | .471 | 13 | 32 | .406 | 4 | 6 | .667 | 15 | 25 | 40 | 2.5 | 37 | 1 | 6 | 20 | 0 | 6 | 65 | 4.1 |
| 2011-12 | 16 | 0 | 205 | 12.8 | 9 | 25 | .360 | 6 | 15 | .400 | 8 | 13 | .615 | 6 | 21 | 27 | 1.7 | 24 | 0 | 13 | 7 | 3 | 2 | 32 | 2.0 |
| 2012-13 | 18 | 17 | 547 | 30.4 | 59 | 158 | .373 | 31 | 85 | .365 | 43 | 61 | .705 | 33 | 48 | 81 | 4.5 | 36 | 1 | 15 | 21 | 10 | 5 | 192 | 10.7 |
| TOTAL | 50 | 21 | 1020 | 20.4 | 92 | 234 | .393 | 50 | 132 | .379 | 55 | 80 | .688 | 54 | 94 | 148 | 3.0 | 97 | 2 | 34 | 48 | 13 | 13 | 289 | 5.8 |



PLAYER INFORMATION



DAI-JON PARKER

24

Junior, Guard
6'3" 190 lbs.
Baton Rouge, La.
Milton HS (Ga.)

GENERAL ★ Played in all 36 games as a true freshman and 25 as a sophomore...Became one of the team's top perimeter defenders towards the end of the 2011-12 campaign...Was a standout three-sport athlete in high school.

2012-13 (SOPHOMORE) ★ Played in 25 games, and started the last 19...Missed the first eight games of the season due to a suspension for a violation of non-academic team policy...Scored a career-high 18 points in 34 minutes vs. South Carolina at Memorial Gym (3/9)...Tallied double figures in seven games...Made career-high six field goals and a career-high five threes, in 17-point effort in win over Texas A&M (2/16)...Grabbed a career-high 13 rebounds in win at Mississippi State (2/23)...Posted an 11-point and nine-rebound performance at LSU (2/6)...Made career-high six free throws at South Carolina (1/19).

2011-12 (FRESHMAN) ★ Averaged 1.7 points, 1.0 rebounds and 0.7 steals per game in his freshman season...Scored a career-high 10 points in win over Monmouth (11/25)...Had a career-best five rebounds and made career-high four free throws in win over Georgia at Memorial Gym (1/14)...Made two threes against Monmouth and vs. Auburn (1/7)...Played a season-high 22 minutes against Bucknell (11/15).

HIGH SCHOOL ★ Averaged 14 points, six rebounds, five assists, two blocks and two steals in his senior season at Milton...His 2010 Milton team captured the Class 5A state championship, and the 2011 team won the regional championship...Named the Defensive Player of the Year in 2010 and 2011, while also being named to the All-Region and All-State first team...Lettered three seasons in basketball, one in football, and one in baseball, and served three years as the captain of his basketball team...Milton teammates Shannon Scott (Ohio State), Julian Royal (Georgia Tech), and Jordan Loyd (Furman) all signed to play Division I basketball.

PERSONAL ★ Dai-Jon Cortez Daione Parker... Oct. 3, 1992... Son of Deirdre Parker... Has two brothers, Damien (29) and Eric (21), and one sister, Dumariera (25)... Major is Sociology... Advice to youngsters: "Get the grades, basketball isn't going anywhere."



JAMES SIAKAM

35

RS Junior, Forward
6'7" 215 lbs.
Douala, Cameroon
Brehm Prep (Ill.)

GENERAL ★ Signed in the late period in 2010 with the Commodores.

2012-13 (RS SOPHOMORE) ★ Played in 26 games and made the first and only start of his career at Tennessee (1/29)...Scored a career-high eight points and grabbed career-high eight rebounds vs. Marist at Old Spice Classic (11/23)...Had seven rebounds at Arkansas (1/12) and at Mississippi State (2/23).

2011-12 (RS FRESHMAN) ★ Played in 13 games in his redshirt freshman campaign...Averaged 0.5 points and 0.2 rebounds...Scored two points vs. LSU (2/8) and at Ole Miss (2/16).

2010-11 (FRESHMAN) ★ Redshirted his freshman season.

HIGH SCHOOL ★ Averaged 18 points, 10 rebounds, and five blocks per game for his Brehm (Ill.) Prep team.

PERSONAL ★ James Bamba Siakam...Born May 23, 1992... Son of Tchamo and Victoire Siakam... Has three brothers, Boris, Christian, and Pascal and two sisters, Raissa and Vanessa... Major is Human and Organizational Development... Chose the Commodores over Southern Illinois, Marquette, Illinois, Florida, Virginia, and UCLA...Advice to youngsters: "Work hard for whatever you want because nothing is free. Stay humble, and above all, put God first in any of your endeavors."

Parker's Overall Statistics at Vanderbilt

| Year | GP | GS | Min | Avg | FG | FGA | Pct | 3FG | 3FGA | Pct | FT | FTA | Pct | Off | Def | Tot | Avg | PF | FO | Ast | TO | Blk | Stl | Pts | Avg |
|--------------|-----------|-----------|-------------|-------------|-----------|------------|-------------|-----------|------------|-------------|-----------|-----------|-------------|-----------|------------|------------|------------|-----------|----------|-----------|-----------|-----------|-----------|------------|------------|
| 2011-12 | 36 | 0 | 398 | 11.1 | 22 | 71 | .310 | 11 | 44 | .250 | 6 | 9 | .667 | 5 | 30 | 35 | 1.0 | 28 | 0 | 25 | 17 | 6 | 9 | 61 | 1.7 |
| 2012-13 | 25 | 19 | 713 | 28.5 | 60 | 145 | .414 | 29 | 73 | .397 | 31 | 50 | .620 | 12 | 99 | 111 | 4.4 | 51 | 0 | 60 | 38 | 7 | 17 | 180 | 7.2 |
| TOTAL | 61 | 19 | 1111 | 18.2 | 82 | 216 | .380 | 40 | 117 | .342 | 37 | 59 | .627 | 17 | 129 | 146 | 2.4 | 79 | 0 | 85 | 55 | 13 | 26 | 241 | 4.0 |

Parker's SEC Statistics at Vanderbilt

| Year | GP | GS | Min | Avg | FG | FGA | Pct | 3FG | 3FGA | Pct | FT | FTA | Pct | Off | Def | Tot | Avg | PF | FO | Ast | TO | Blk | Stl | Pts | Avg |
|--------------|-----------|-----------|------------|-------------|-----------|------------|-------------|-----------|-----------|-------------|-----------|-----------|-------------|-----------|-----------|------------|------------|-----------|----------|-----------|-----------|----------|-----------|------------|------------|
| 2011-12 | 16 | 0 | 171 | 10.7 | 10 | 23 | .435 | 6 | 16 | .375 | 4 | 5 | .800 | 1 | 18 | 19 | 1.2 | 16 | 0 | 9 | 8 | 0 | 2 | 30 | 1.9 |
| 2012-13 | 18 | 16 | 525 | 29.2 | 43 | 108 | .398 | 22 | 54 | .407 | 29 | 45 | .644 | 9 | 72 | 81 | 4.5 | 38 | 0 | 49 | 30 | 4 | 10 | 137 | 7.6 |
| TOTAL | 34 | 16 | 696 | 20.5 | 53 | 131 | .405 | 28 | 70 | .400 | 33 | 50 | .660 | 10 | 90 | 100 | 2.9 | 54 | 0 | 58 | 38 | 4 | 12 | 167 | 4.9 |

Siakam's Overall Statistics at Vanderbilt

| Year | GP | GS | Min | Avg | FG | FGA | Pct | 3FG | 3FGA | Pct | FT | FTA | Pct | Off | Def | Tot | Avg | PF | FO | Ast | TO | Blk | Stl | Pts | Avg |
|--------------|-----------|----------|------------|------------|-----------|-----------|-------------|----------|----------|-------------|-----------|-----------|-------------|-----------|-----------|-----------|------------|-----------|----------|----------|-----------|----------|----------|-----------|------------|
| 2011-12 | 13 | 0 | 25 | 1.9 | 2 | 5 | .400 | 0 | 0 | .000 | 2 | 4 | .500 | 1 | 1 | 2 | 0.2 | 3 | 0 | 0 | 1 | 1 | 0 | 6 | 0.5 |
| 2012-13 | 26 | 1 | 229 | 8.8 | 19 | 40 | .475 | 0 | 1 | .000 | 15 | 30 | .500 | 27 | 23 | 50 | 1.9 | 30 | 0 | 7 | 16 | 7 | 7 | 53 | 2.0 |
| TOTAL | 39 | 1 | 254 | 6.5 | 21 | 45 | .467 | 0 | 1 | .000 | 17 | 34 | .500 | 28 | 24 | 52 | 1.3 | 33 | 0 | 7 | 17 | 8 | 7 | 59 | 1.5 |

Siakam's SEC Statistics at Vanderbilt

| Year | GP | GS | Min | Avg | FG | FGA | Pct | 3FG | 3FGA | Pct | FT | FTA | Pct | Off | Def | Tot | Avg | PF | FO | Ast | TO | Blk | Stl | Pts | Avg |
|---------|----|----|-----|-----|----|-----|-------|-----|------|------|----|-----|------|-----|-----|-----|-----|----|----|-----|----|-----|-----|-----|-----|
| 2011-12 | 6 | 0 | 9 | 1.5 | 2 | 2 | 1.000 | 0 | 0 | .000 | 0 | 0 | .000 | 1 | 1 | 2 | 0.3 | 3 | 0 | 0 | 0 | 0 | 0 | 4 | 0.7 |
| 2012-13 | 11 | 1 | 92 | 8.4 | 12 | 26 | .462 | 0 | 1 | .000 | 7 | 16 | .438 | 13 | 12 | 25 | 2.3 | 11 | 0 | 3 | 6 | 3 | 3 | 31 | 2.8 |
| TOTAL | 17 | 1 | 101 | 5.9 | 14 | 28 | .500 | 0 | 1 | .000 | 7 | 16 | .438 | 14 | 13 | 27 | 1.6 | 14 | 0 | 3 | 6 | 3 | 3 | 35 | 2.1 |



PLAYER INFORMATION



CARTER JOSEPHS

14

Sophomore, Guard
6'0" 185 lbs.
San Antonio, Texas
Tom C. Clark HS

GENERAL ★ Walk-on guard from San Antonio, Texas, who played at Tom C. Clark High School.

2012-13 (FRESHMAN) ★ Played in six games, and scored the first two points of his career with a lay-up at Mississippi State (2/23).

HIGH SCHOOL ★ Was his team's captain and defensive MVP in 2011-12, where he averaged 7.8 points, 5.2 assists, and 3.7 rebounds per game... His Clark High School team was a regional quarterfinalist in 2010-11 and a regional finalist in 2011-12, while also making the state quarterfinals in his senior year...Academically, he was a member of the National Honor Society and the Spanish National Honor Society, and was a National Achievement Scholar Semifinalist, and won the Clark Principal's Award from 2009-12.

PERSONAL ★ Carter Josephs... August 26, 1994... Son of Paul and Sharon Josephs... Has one brother, Nathan (16)...Plans to major in mechanical engineering... Advice to youngsters: "Work harder than everyone else."



NATHAN WATKINS

10

Sophomore, Guard
6'5" 195 lbs.
Brentwood, Tenn.
Ensworth School

GENERAL ★ Walk-on guard from Brentwood, Tenn., who played at Ensworth School in Nashville.

2012-13 (FRESHMAN) ★ Played in five games, did not score...Had one rebound in win over Alabama A&M.

HIGH SCHOOL ★ Averaged 13 points and five rebounds in his senior season at Ensworth, where he was team captain...In his junior and senior years, he was a part of two state and regional championship teams, and his Ensworth squad claimed the 2012 Naples Daily News Tournament Championship...Individually, he was named to the TSSAA State All-Tournament team and the Tennessee Prep Hoops All-Region team in his senior season, while also being named a finalist for the Moss-Oliver Award, an award the Nashville City Civitan Club presents annually to a girl and boy basketball player from a Nashville high school who excels in athletics, academics, school activities and community involvement.

PERSONAL ★ Nathan Paul Watkins... October 26, 1993... Son of Clint and Janice Watkins... Has one brother, Richmond (23), and two sisters, Misty (40) and Lacey (34)...Undecided on major at Vanderbilt... Advice to youngsters: "Never be satisfied with where you're at."

Josephs' Overall Statistics at Vanderbilt

| Year | GP | GS | Min | Avg | FG | FGA | Pct | 3FG | 3FGA | Pct | FT | FTA | Pct | Off | Def | Tot | Avg | PF | FO | Ast | TO | Blk | Stl | Pts | Avg |
|--------------|----------|----------|----------|------------|----------|----------|--------------|----------|----------|-------------|----------|----------|-------------|----------|----------|----------|------------|----------|----------|----------|----------|----------|----------|----------|------------|
| 2012-13 | 6 | 0 | 6 | 1.0 | 1 | 1 | 1.000 | 0 | 0 | .000 | 0 | 0 | .000 | 0 | 0 | 0 | 0.0 | 1 | 0 | 0 | 0 | 0 | 0 | 2 | 0.3 |
| TOTAL | 6 | 0 | 6 | 1.0 | 1 | 1 | 1.000 | 0 | 0 | .000 | 0 | 0 | .000 | 0 | 0 | 0 | 0.0 | 1 | 0 | 0 | 0 | 0 | 0 | 2 | 0.3 |

Josephs' SEC Statistics at Vanderbilt

| Year | GP | GS | Min | Avg | FG | FGA | Pct | 3FG | 3FGA | Pct | FT | FTA | Pct | Off | Def | Tot | Avg | PF | FO | Ast | TO | Blk | Stl | Pts | Avg |
|--------------|----------|----------|----------|------------|----------|----------|--------------|----------|----------|-------------|----------|----------|-------------|----------|----------|----------|------------|----------|----------|----------|----------|----------|----------|----------|------------|
| 2012-13 | 2 | 0 | 2 | 1.0 | 1 | 1 | 1.000 | 0 | 0 | .000 | 0 | 0 | .000 | 0 | 0 | 0 | 0.0 | 1 | 0 | 0 | 0 | 0 | 0 | 2 | 1.0 |
| TOTAL | 2 | 0 | 2 | 1.0 | 1 | 1 | 1.000 | 0 | 0 | .000 | 0 | 0 | .000 | 0 | 0 | 0 | 0.0 | 1 | 0 | 0 | 0 | 0 | 0 | 2 | 1.0 |

Watkins' Overall Statistics at Vanderbilt

| Year | GP | GS | Min | Avg | FG | FGA | Pct | 3FG | 3FGA | Pct | FT | FTA | Pct | Off | Def | Tot | Avg | PF | FO | Ast | TO | Blk | Stl | Pts | Avg |
|--------------|----------|----------|----------|------------|----------|----------|-------------|----------|----------|-------------|----------|----------|-------------|----------|----------|----------|------------|----------|----------|----------|----------|----------|----------|----------|------------|
| 2012-13 | 5 | 0 | 5 | 1.0 | 0 | 1 | .000 | 0 | 1 | .000 | 0 | 0 | .000 | 0 | 1 | 1 | 0.2 | 0 | 0 | 0 | 2 | 0 | 1 | 0 | 0.0 |
| TOTAL | 5 | 0 | 5 | 1.0 | 0 | 1 | .000 | 0 | 1 | .000 | 0 | 0 | .000 | 0 | 1 | 1 | 0.2 | 0 | 0 | 0 | 2 | 0 | 1 | 0 | 0.0 |

Watkins' SEC Statistics at Vanderbilt

| Year | GP | GS | Min | Avg | FG | FGA | Pct | 3FG | 3FGA | Pct | FT | FTA | Pct | Off | Def | Tot | Avg | PF | FO | Ast | TO | Blk | Stl | Pts | Avg |
|--------------|----------|----------|----------|------------|----------|----------|-------------|----------|----------|-------------|----------|----------|-------------|----------|----------|----------|------------|----------|----------|----------|----------|----------|----------|----------|------------|
| 2012-13 | 2 | 0 | 2 | 1.0 | 0 | 1 | .000 | 0 | 1 | .000 | 0 | 0 | .000 | 0 | 0 | 0 | 0.0 | 0 | 0 | 0 | 0 | 0 | 1 | 0 | 0.0 |
| TOTAL | 2 | 0 | 2 | 1.0 | 0 | 1 | .000 | 0 | 1 | .000 | 0 | 0 | .000 | 0 | 0 | 0 | 0.0 | 0 | 0 | 0 | 0 | 0 | 1 | 0 | 0.0 |



NEWCOMER INFORMATION



DAMIAN JONES

30

Freshman, Center
6'10" 235 lbs.
Baton Rouge, La.
Scotlandville Magnet HS

GENERAL ★ 6'10 post player who won two Louisiana state championships for his Scotlandville Magnet High School team in Baton Rouge who is expecting to study engineering at Vanderbilt...Chose the Commodores over LSU, Oklahoma, Oklahoma State, Duke, Syracuse, Kansas, Stanford, Florida, and Alabama.

HIGH SCHOOL ★ Averaged 15.4 points, 8.0 rebounds, 4.0 blocks, and 2.0 assists in his senior season at Scotlandville Magnet...His Scotlandville teams won back-to-back state championships in his junior and senior seasons, and he was named Louisiana's 5A Player of the Year as a senior...Scotlandville also captured four district championships...Was a member of the A Honor Roll.

PERSONAL ★ Damian William Jones...June 30, 1995...Son of David and Dana Jones...Has two brothers, Darian (14) and Darryl (12)...Plans to major in Electrical Engineering...Advice to youngsters: "Do your best in what you put most of your interest in."



LUKE KORNET

3

Freshman, Forward
6'10" 216 lbs.
Lantana, Texas
Liberty Christian

GENERAL ★ 6'10 forward who signed in the late signing period with the Commodores...Grew seven inches in his senior season...son of Frank Kornet, a former Vanderbilt basketball standout of his own from 1986-89.

HIGH SCHOOL ★ Averaged 15.0 points, 8.0 rebounds, 3.0 blocks, and 3.0 steals at Liberty Christian School in Argyle, Texas...Team was a state finalist in 2013, and were District TAPPS 5A-1 Champions in 2013...Named to TAPPS 5A First Team All-State in 2012-13, and was an honorable all-state selection in 2011-12...Named to TAPPS 5A-1 First Team All-District team in 2011-12 and 2012-13...Denton Record Chronicle Defensive Player of the Area in 2012-13...Selected to the 2013 TAPPS State All-Tournament Team, and was also a member of the 2012 and 2013 Academic All-State Team.

PERSONAL ★ Luke Francis Kornet...July 15, 1995...Son of Frank and Tracy Kornet...Both parents attended Vanderbilt...Has one brother, John (21) and one sister, Nicole (19)...Plans to major in Engineering...Advice to youngsters: "Your life is a gift from God, so do everything possible to give back to Him."



PLAYER INFORMATION

KYLE FULLER CAREER GBG

2012-13 (Junior)

| Date | Opponent | M | FG-A | 3P-A | FT-A | Reb | PF | A | T | B | S | PTS |
|------|------------------|----|------|------|------|-----|----|---|---|---|---|-----|
| N10 | Nicholls State* | 36 | 6-13 | 2-5 | 1-3 | 3 | 1 | 6 | 1 | 0 | 0 | 15 |
| N16 | @Oregon* | 37 | 6-9 | 0-1 | 5-6 | 1 | 0 | 1 | 6 | 0 | 0 | 17 |
| N22 | Davidson* | 39 | 6-15 | 2-5 | 0-0 | 6 | 2 | 1 | 2 | 0 | 0 | 14 |
| N23 | Marist* | 36 | 2-12 | 0-5 | 0-0 | 0 | 1 | 1 | 2 | 0 | 1 | 4 |
| N25 | UTEP* | 34 | 4-8 | 1-3 | 5-6 | 2 | 1 | 5 | 1 | 0 | 1 | 14 |
| D1 | Villanova* | 31 | 0-4 | 0-3 | 4-5 | 3 | 3 | 2 | 2 | 0 | 1 | 4 |
| D6 | @Xavier* | 40 | 8-16 | 2-7 | 7-10 | 4 | 1 | 5 | 2 | 1 | 3 | 25 |
| D15 | Alabama A&M* | 30 | 3-10 | 1-5 | 0-0 | 2 | 2 | 3 | 0 | 0 | 1 | 7 |
| D17 | Cornell* | 35 | 5-8 | 2-3 | 5-6 | 6 | 3 | 3 | 2 | 1 | 1 | 17 |
| D21 | vs. MTSU* | 33 | 3-7 | 0-2 | 2-5 | 2 | 4 | 0 | 3 | 0 | 3 | 8 |
| D29 | Butler* | 26 | 4-9 | 1-3 | 1-3 | 2 | 0 | 0 | 0 | 0 | 1 | 10 |
| J2 | William & Mary* | 29 | 3-10 | 1-5 | 1-3 | 4 | 0 | 4 | 2 | 0 | 0 | 8 |
| J10 | Kentucky* | 23 | 3-7 | 1-1 | 0-0 | 3 | 0 | 0 | 2 | 0 | 1 | 7 |
| J12 | @Arkansas* | 25 | 1-8 | 0-4 | 2-2 | 0 | 1 | 1 | 3 | 0 | 2 | 4 |
| J15 | Ole Miss | 13 | 1-6 | 1-5 | 0-0 | 2 | 1 | 0 | 2 | 0 | 0 | 3 |
| J19 | @South Carolina | 28 | 3-5 | 2-2 | 4-8 | 5 | 0 | 2 | 2 | 0 | 0 | 12 |
| J23 | Auburn | 26 | 3-7 | 2-6 | 6-7 | 5 | 0 | 3 | 0 | 0 | 0 | 14 |
| J26 | @Missouri | 16 | 0-3 | 0-1 | 0-0 | 0 | 0 | 1 | 1 | 0 | 0 | 0 |
| J29 | @Tennessee | 31 | 2-7 | 1-2 | 1-1 | 4 | 3 | 2 | 1 | 0 | 0 | 6 |
| F2 | Alabama | 20 | 4-7 | 3-4 | 2-3 | 1 | 1 | 0 | 3 | 0 | 0 | 13 |
| F6 | @LSU | 13 | 1-3 | 0-1 | 0-0 | 0 | 1 | 0 | 0 | 0 | 1 | 2 |
| F9 | Arkansas | 28 | 4-8 | 0-3 | 0-0 | 3 | 1 | 2 | 0 | 0 | 1 | 8 |
| F13 | Tennessee | 28 | 3-10 | 1-3 | 0-0 | 2 | 2 | 1 | 1 | 0 | 0 | 7 |
| F16 | Texas A&M | 29 | 2-5 | 0-2 | 5-8 | 5 | 3 | 6 | 3 | 0 | 0 | 9 |
| F20 | @Kentucky | 24 | 5-10 | 2-3 | 2-3 | 2 | 0 | 1 | 0 | 0 | 0 | 14 |
| F23 | @Mississippi St. | 17 | 1-6 | 0-4 | 0-0 | 0 | 0 | 4 | 2 | 0 | 0 | 2 |
| F27 | Georgia | 13 | 0-3 | 0-2 | 2-2 | 1 | 1 | 3 | 1 | 0 | 0 | 2 |
| M2 | @Auburn | 17 | 1-5 | 0-2 | 1-1 | 2 | 2 | 2 | 0 | 0 | 0 | 3 |
| M6 | @Florida | 21 | 1-3 | 0-0 | 0-0 | 1 | 2 | 1 | 1 | 0 | 0 | 2 |
| M9 | South Carolina | 21 | 1-5 | 0-2 | 0-0 | 1 | 0 | 1 | 1 | 0 | 1 | 2 |
| M14 | vs. Arkansas | 28 | 5-8 | 3-6 | 6-8 | 1 | 2 | 0 | 0 | 0 | 2 | 19 |
| M15 | vs. Kentucky | 20 | 4-6 | 0-1 | 2-2 | 1 | 3 | 2 | 1 | 0 | 0 | 10 |
| M16 | vs. Ole Miss | 19 | 1-5 | 0-2 | 2-2 | 3 | 4 | 2 | 0 | 0 | 0 | 4 |

2011-12 (Sophomore)

| Date | Opponent | M | FG-A | 3P-A | FT-A | Reb | PF | A | T | B | S | PTS |
|------|-----------------|----|------|------|------|-----|----|---|---|---|---|-----|
| N11 | Oregon | 13 | 0-2 | 0-2 | 0-0 | 1 | 1 | 2 | 1 | 0 | 0 | 0 |
| N13 | Cleveland State | 17 | 1-2 | 0-0 | 1-1 | 0 | 1 | 0 | 3 | 0 | 0 | 3 |
| N15 | Bucknell | 17 | 0-2 | 0-2 | 0-0 | 1 | 2 | 1 | 0 | 0 | 0 | 0 |
| N19 | N.C. State | 10 | 0-2 | 0-1 | 0-0 | 1 | 0 | 1 | 1 | 0 | 1 | 0 |
| N21 | Oregon State | 3 | 0-0 | 0-0 | 0-0 | 1 | 0 | 0 | 0 | 0 | 0 | 1 |
| N25 | Monmouth | 14 | 1-1 | 0-0 | 0-0 | 1 | 1 | 4 | 0 | 0 | 2 | 2 |
| N28 | Xavier | 6 | 0-0 | 0-0 | 0-0 | 0 | 2 | 0 | 1 | 0 | 0 | 0 |
| D19 | Longwood | 9 | 1-5 | 0-2 | 3-5 | 2 | 0 | 1 | 0 | 0 | 2 | 5 |
| D21 | Lafayette | 11 | 2-3 | 0-0 | 0-0 | 4 | 0 | 4 | 1 | 0 | 0 | 4 |
| D29 | @Marquette | 1 | 0-0 | 0-0 | 0-0 | 1 | 0 | 0 | 0 | 0 | 0 | 0 |
| J7 | Auburn | 5 | 1-3 | 0-1 | 0-0 | 0 | 0 | 1 | 0 | 0 | 0 | 2 |
| J10 | @South Carolina | 3 | 0-1 | 0-0 | 0-0 | 1 | 0 | 0 | 2 | 0 | 0 | 0 |
| J24 | Tennessee | 1 | 0-0 | 0-0 | 0-0 | 0 | 0 | 0 | 0 | 0 | 0 | 0 |
| J31 | @Arkansas | 7 | 0-1 | 0-0 | 0-0 | 2 | 0 | 1 | 0 | 0 | 0 | 0 |
| F4 | @Florida | 3 | 0-0 | 0-0 | 0-0 | 0 | 0 | 0 | 1 | 0 | 0 | 0 |
| F8 | LSU | 1 | 0-0 | 0-0 | 0-0 | 0 | 0 | 1 | 0 | 0 | 0 | 0 |
| F16 | @Ole Miss | 4 | 0-0 | 0-0 | 1-2 | 0 | 0 | 1 | 0 | 0 | 0 | 1 |
| F25 | @Kentucky | 0+ | 0-0 | 0-0 | 0-0 | 0 | 0 | 0 | 0 | 0 | 0 | 0 |

KYLE FULLER CAREER GBG

2010-11 (Freshman)

| Date | Opponent | M | FG-A | 3P-A | FT-A | Reb | PF | A | T | B | S | PTS |
|------|-------------------|----|------|------|------|-----|----|---|---|---|---|-----|
| N12 | Presbyterian | 17 | 3-6 | 0-1 | 0-0 | 2 | 0 | 2 | 2 | 1 | 1 | 6 |
| N18 | Nebraska | 10 | 0-2 | 0-1 | 0-0 | 1 | 1 | 0 | 1 | 0 | 0 | 0 |
| N19 | West Virginia | 12 | 1-3 | 0-1 | 0-0 | 0 | 3 | 2 | 0 | 0 | 1 | 2 |
| N21 | North Carolina | 12 | 1-3 | 0-1 | 0-0 | 0 | 0 | 0 | 2 | 0 | 2 | 2 |
| N24 | Grambling State | 16 | 1-4 | 0-1 | 0-0 | 1 | 2 | 3 | 0 | 0 | 0 | 2 |
| N27 | Appalachian State | 10 | 1-2 | 0-1 | 0-0 | 0 | 2 | 2 | 3 | 0 | 0 | 2 |
| D1 | Western Kentucky | 19 | 1-3 | 1-3 | 0-0 | 1 | 2 | 3 | 3 | 0 | 0 | 3 |
| D4 | Belmont | 15 | 0-2 | 0-1 | 0-0 | 2 | 2 | 2 | 1 | 0 | 0 | 0 |
| D8 | Missouri | 15 | 0-2 | 0-1 | 1-2 | 1 | 2 | 2 | 0 | 0 | 1 | 1 |
| D18 | SE Louisiana | 19 | 1-2 | 1-2 | 0-0 | 2 | 1 | 3 | 2 | 0 | 0 | 3 |
| D21 | MTSU | 18 | 0-3 | 0-2 | 0-0 | 4 | 3 | 0 | 2 | 0 | 0 | 0 |
| D29 | Marquette | 13 | 0-2 | 0-1 | 1-2 | 0 | 0 | 1 | 1 | 0 | 0 | 1 |
| J2 | Davidson | 21 | 3-4 | 0-0 | 0-0 | 3 | 2 | 5 | 3 | 0 | 1 | 6 |
| J8 | South Carolina | 12 | 1-2 | 0-0 | 0-1 | 0 | 1 | 0 | 1 | 0 | 1 | 2 |
| J12 | Georgia | 12 | 0-1 | 0-0 | 2-2 | 0 | 1 | 1 | 1 | 0 | 0 | 2 |
| J15 | Tennessee | 10 | 1-2 | 0-0 | 0-0 | 0 | 0 | 0 | 1 | 0 | 0 | 2 |
| J19 | Ole Miss | 9 | 0-1 | 0-0 | 0-0 | 1 | 1 | 0 | 1 | 0 | 0 | 1 |
| J22 | Saint Mary's | 22 | 2-3 | 0-0 | 0-0 | 3 | 2 | 4 | 1 | 0 | 1 | 4 |
| J27 | Mississippi State | 11 | 0-0 | 0-0 | 1-2 | 1 | 1 | 2 | 0 | 0 | 1 | 1 |
| J29 | Arkansas | 13 | 0-2 | 0-0 | 0-0 | 3 | 2 | 3 | 1 | 0 | 0 | 0 |
| F1 | Florida | 14 | 0-2 | 0-0 | 0-0 | 1 | 1 | 0 | 0 | 0 | 0 | 0 |
| F5 | South Carolina | 17 | 0-1 | 0-1 | 0-0 | 2 | 2 | 2 | 3 | 0 | 0 | 0 |
| F10 | Alabama | 16 | 2-3 | 2-3 | 0-0 | 1 | 0 | 0 | 1 | 0 | 0 | 6 |
| F12 | Kentucky | 23 | 1-4 | 1-1 | 0-0 | 2 | 1 | 2 | 0 | 0 | 1 | 3 |
| F16 | Georgia | 16 | 0-4 | 0-1 | 0-0 | 4 | 0 | 3 | 0 | 0 | 1 | 0 |
| F19 | Auburn | 17 | 1-2 | 0-0 | 2-5 | 3 | 1 | 3 | 1 | 0 | 1 | 4 |
| F22 | Tennessee | 8 | 0-1 | 0-0 | 0-0 | 1 | 0 | 0 | 1 | 0 | 0 | 0 |
| F26 | LSU | 13 | 1-1 | 1-1 | 0-0 | 0 | 1 | 2 | 0 | 0 | 0 | 3 |
| M1 | Kentucky | 9 | 0-2 | 0-1 | 0-0 | 1 | 4 | 1 | 0 | 0 | 0 | 0 |
| M5 | Florida | 18 | 0-0 | 0-0 | 0-0 | 2 | 2 | 2 | 0 | 0 | 0 | 0 |
| M10 | LSU | 29 | 1-4 | 0-2 | 1-2 | 1 | 2 | 3 | 2 | 0 | 0 | 3 |
| M11 | Mississippi State | 12 | 1-2 | 1-1 | 0-0 | 1 | 0 | 1 | 0 | 0 | 0 | 3 |
| M12 | Florida | 11 | 0-1 | 0-1 | 0-0 | 0 | 2 | 0 | 0 | 0 | 1 | 0 |
| M17 | Richmond | 10 | 1-2 | 0-1 | 0-0 | 2 | 0 | 1 | 0 | 0 | 0 | 2 |



PLAYER INFORMATION

JOSH HENDERSON CAREER GBG

2012-13 (RS Sophomore)

| Date | Opponent | M | FG-A | 3P-A | FT-A | Reb | PF | A | T | B | S | PTS |
|------|-------------------|----|------|------|------|-----|----|---|---|---|---|-----|
| N10 | Nicholls State | 13 | 1-3 | 0-0 | 1-2 | 2 | 0 | 0 | 0 | 0 | 0 | 3 |
| N16 | @Oregon | 21 | 0-0 | 0-0 | 3-4 | 5 | 4 | 2 | 2 | 0 | 1 | 3 |
| N22 | Davidson | 22 | 2-5 | 0-0 | 0-0 | 3 | 2 | 0 | 1 | 1 | 0 | 4 |
| N23 | Marist* | 22 | 2-8 | 0-0 | 0-0 | 4 | 1 | 0 | 0 | 1 | 1 | 4 |
| N25 | UTEP* | 17 | 2-4 | 0-0 | 1-2 | 1 | 3 | 0 | 1 | 0 | 2 | 5 |
| D1 | Villanova* | 11 | 0-0 | 0-0 | 1-2 | 3 | 1 | 0 | 3 | 0 | 0 | 1 |
| D6 | @Xavier* | 20 | 0-1 | 0-0 | 0-0 | 1 | 1 | 2 | 1 | 1 | 0 | 0 |
| D15 | Alabama A&M* | 24 | 6-7 | 0-0 | 1-3 | 4 | 3 | 2 | 3 | 0 | 2 | 13 |
| D17 | Cornell* | 25 | 5-9 | 0-0 | 1-3 | 5 | 4 | 2 | 2 | 2 | 0 | 11 |
| D21 | vs. MTSU* | 24 | 1-5 | 0-0 | 0-0 | 2 | 3 | 2 | 1 | 0 | 1 | 2 |
| D29 | Butler* | 24 | 2-4 | 0-0 | 1-2 | 1 | 3 | 2 | 0 | 1 | 1 | 5 |
| J2 | William & Mary | 29 | 2-6 | 0-0 | 1-2 | 7 | 3 | 3 | 2 | 2 | 2 | 5 |
| J10 | Kentucky* | 13 | 0-3 | 0-0 | 0-0 | 2 | 1 | 1 | 2 | 1 | 1 | 0 |
| J12 | @Arkansas* | 12 | 1-3 | 0-0 | 0-0 | 3 | 1 | 1 | 4 | 1 | 0 | 2 |
| J15 | Ole Miss | 9 | 2-2 | 0-0 | 0-0 | 2 | 2 | 0 | 0 | 0 | 0 | 5 |
| J19 | @South Carolina | 21 | 2-6 | 0-0 | 1-2 | 3 | 2 | 0 | 2 | 1 | 1 | 5 |
| J23 | Auburn | 18 | 2-4 | 0-0 | 0-1 | 4 | 2 | 1 | 3 | 0 | 1 | 4 |
| J26 | @Missouri | 6 | 0-0 | 0-0 | 0-2 | 0 | 2 | 0 | 1 | 0 | 0 | 0 |
| J29 | @Tennessee | 26 | 6-10 | 0-0 | 1-2 | 3 | 2 | 1 | 0 | 0 | 0 | 13 |
| F2 | Alabama* | 32 | 3-6 | 0-0 | 0-1 | 4 | 4 | 1 | 4 | 2 | 1 | 6 |
| F6 | @LSU* | 26 | 0-1 | 0-0 | 0-1 | 5 | 5 | 0 | 2 | 1 | 1 | 0 |
| F9 | Arkansas | 23 | 5-6 | 0-0 | 1-3 | 4 | 1 | 0 | 3 | 3 | 1 | 11 |
| F13 | Tennessee | 18 | 2-6 | 0-0 | 0-1 | 1 | 0 | 1 | 2 | 0 | 0 | 4 |
| F16 | Texas A&M | 24 | 5-9 | 0-0 | 1-2 | 5 | 2 | 1 | 1 | 2 | 1 | 11 |
| F20 | @Kentucky* | 25 | 5-7 | 0-0 | 3-4 | 2 | 2 | 0 | 1 | 1 | 0 | 13 |
| F23 | @Mississippi St.* | 13 | 4-5 | 0-0 | 0-0 | 3 | 4 | 0 | 0 | 0 | 0 | 8 |
| F27 | Georgia* | 29 | 2-8 | 0-0 | 4-4 | 5 | 4 | 0 | 0 | 2 | 0 | 8 |
| M2 | @Auburn* | 32 | 3-4 | 0-1 | 5-7 | 4 | 3 | 0 | 2 | 0 | 1 | 11 |
| M6 | @Florida* | 13 | 3-7 | 0-0 | 0-0 | 3 | 1 | 0 | 2 | 0 | 0 | 6 |
| M9 | South Carolina* | 19 | 2-4 | 0-0 | 0-0 | 6 | 4 | 2 | 1 | 3 | 0 | 4 |
| M14 | vs. Arkansas* | 24 | 0-5 | 0-0 | 1-2 | 6 | 3 | 1 | 2 | 1 | 0 | 1 |
| M15 | vs. Kentucky* | 21 | 1-4 | 0-0 | 0-1 | 5 | 1 | 0 | 1 | 2 | 0 | 2 |
| M16 | vs. Ole Miss* | 22 | 2-5 | 0-0 | 3-5 | 5 | 1 | 2 | 0 | 1 | 0 | 7 |

2011-12 (RS Freshman)

| Date | Opponent | M | FG-A | 3P-A | FT-A | Reb | PF | A | T | B | S | PTS |
|------|-----------------|----|------|------|------|-----|----|---|---|---|---|-----|
| N11 | Oregon | 11 | 1-3 | 0-0 | 2-4 | 4 | 2 | 0 | 0 | 0 | 0 | 4 |
| N13 | Cleveland State | 16 | 0-1 | 0-0 | 0-0 | 4 | 0 | 0 | 0 | 0 | 1 | 4 |
| N15 | Bucknell | 13 | 1-3 | 0-0 | 0-1 | 3 | 3 | 4 | 1 | 0 | 0 | 2 |
| N19 | N.C. State | 4 | 0-0 | 0-0 | 0-0 | 2 | 3 | 0 | 1 | 0 | 0 | 0 |
| N21 | Oregon State | 4 | 1-2 | 0-0 | 0-0 | 1 | 3 | 0 | 1 | 0 | 0 | 2 |
| N25 | Monmouth | 14 | 4-4 | 0-0 | 2-2 | 5 | 1 | 0 | 2 | 0 | 0 | 10 |
| N28 | Xavier | 18 | 1-4 | 0-0 | 1-2 | 2 | 2 | 1 | 0 | 0 | 0 | 3 |
| M9 | vs. Georgia | 2 | 0-0 | 0-0 | 0-0 | 2 | 1 | 0 | 0 | 0 | 0 | 0 |

CARTER JOSEPHS CAREER GBG

2012-13 (Freshman)

| Date | Opponent | M | FG-A | 3P-A | FT-A | Reb | PF | A | T | B | S | PTS |
|------|------------------|----|------|------|------|-----|----|---|---|---|---|-----|
| N16 | @Oregon | 1 | 0-0 | 0-0 | 0-0 | 0 | 0 | 0 | 0 | 0 | 0 | 0 |
| N25 | UTEP | 1 | 0-0 | 0-0 | 0-0 | 0 | 0 | 0 | 0 | 0 | 0 | 0 |
| D15 | Alabama A&M | 1 | 0-0 | 0-0 | 0-0 | 0 | 0 | 0 | 0 | 0 | 0 | 0 |
| F23 | @Mississippi St. | 2 | 1-1 | 0-0 | 0-0 | 0 | 1 | 0 | 0 | 0 | 0 | 2 |
| M9 | South Carolina | 0+ | 0-0 | 0-0 | 0-0 | 0 | 0 | 0 | 0 | 0 | 0 | 0 |
| M15 | vs. Kentucky | 1 | 0-0 | 0-0 | 0-0 | 0 | 0 | 0 | 0 | 0 | 0 | 0 |

ERIC MCCLELLAN CAREER GBG

2011-12 (Freshman at Tulsa)

| Date | Opponent | M | FG-A | 3P-A | FT-A | Reb | PF | A | T | B | S | PTS |
|------|----------------------|----|------|------|-------|-----|----|---|---|---|---|-----|
| N11 | Arkansas Little Rock | 13 | 1-2 | 1-1 | 2-2 | 0 | 2 | 2 | 2 | 0 | 0 | 5 |
| N13 | SE Louisiana | 14 | 2-5 | 1-2 | 1-2 | 1 | 0 | 2 | 1 | 0 | 1 | 6 |
| N17 | vs. W. Kentucky | 20 | 1-5 | 0-1 | 5-6 | 6 | 1 | 2 | 2 | 0 | 0 | 7 |
| N18 | vs. Northwestern | 15 | 1-2 | 0-1 | 3-5 | 1 | 1 | 1 | 3 | 1 | 0 | 5 |
| N20 | vs. Saint Joseph's | 12 | 2-8 | 1-1 | 1-1 | 0 | 1 | 0 | 0 | 0 | 1 | 6 |
| N22 | @Jackson State | 16 | 2-2 | 0-0 | 2-2 | 0 | 2 | 1 | 5 | 0 | 0 | 6 |
| N26 | @Missouri State | 14 | 0-4 | 0-2 | 0-0 | 4 | 1 | 1 | 3 | 0 | 1 | 0 |
| N30 | @Oklahoma State | 18 | 0-3 | 0-1 | 2-2 | 3 | 3 | 0 | 5 | 0 | 2 | 2 |
| D3 | Arizona State | 21 | 6-9 | 3-5 | 0-0 | 0 | 0 | 3 | 2 | 0 | 1 | 15 |
| D17 | Texas-Arlington | 29 | 4-7 | 0-1 | 4-6 | 4 | 1 | 3 | 2 | 0 | 2 | 12 |
| D19 | Creighton | 24 | 2-6 | 1-1 | 1-5 | 1 | 2 | 4 | 4 | 0 | 0 | 6 |
| D28 | Mercer | 21 | 5-9 | 1-1 | 3-3 | 1 | 0 | 2 | 1 | 1 | 1 | 14 |
| D31 | @TCU | 22 | 2-3 | 1-1 | 4-6 | 0 | 4 | 1 | 6 | 2 | 0 | 9 |
| J4 | @Houston | 27 | 5-8 | 0-0 | 4-5 | 1 | 2 | 2 | 3 | 0 | 0 | 14 |
| J7 | SMU | 31 | 3-7 | 0-3 | 3-4 | 9 | 2 | 3 | 4 | 0 | 0 | 9 |
| J11 | UTEP | 33 | 4-8 | 2-3 | 4-4 | 5 | 1 | 4 | 3 | 0 | 2 | 14 |
| J14 | @East Carolina | 23 | 1-6 | 1-1 | 0-0 | 0 | 3 | 4 | 4 | 0 | 0 | 3 |
| J18 | Tulane | 25 | 1-9 | 0-3 | 3-3 | 4 | 1 | 2 | 2 | 0 | 0 | 5 |
| J21 | @Rice | 18 | 1-3 | 0-1 | 5-8 | 3 | 1 | 0 | 5 | 0 | 1 | 7 |
| J25 | UCF | 28 | 5-6 | 0-1 | 1-4 | 5 | 1 | 2 | 4 | 0 | 1 | 11 |
| J28 | @SMU | 26 | 2-6 | 2-4 | 4-4 | 1 | 2 | 3 | 5 | 0 | 2 | 10 |
| F4 | Marshall | 23 | 1-5 | 0-1 | 2-4 | 1 | 0 | 2 | 2 | 0 | 0 | 4 |
| F8 | @UTEP | 14 | 4-9 | 1-2 | 3-5 | 3 | 4 | 1 | 3 | 0 | 0 | 12 |
| F11 | Houston | 26 | 1-5 | 0-3 | 3-4 | 2 | 2 | 4 | 3 | 0 | 0 | 5 |
| F15 | @Southern Miss | 19 | 1-7 | 0-1 | 4-4 | 1 | 1 | 2 | 2 | 1 | 1 | 6 |
| F18 | Rice | 21 | 1-3 | 0-0 | 2-2 | 3 | 1 | 2 | 2 | 0 | 0 | 4 |
| F25 | @Tulane | 31 | 5-9 | 1-1 | 4-4 | 0 | 3 | 5 | 5 | 0 | 2 | 15 |
| F29 | @UAB | 33 | 6-11 | 1-2 | 1-1 | 4 | 1 | 0 | 1 | 0 | 0 | 14 |
| M3 | Memphis | 31 | 2-5 | 0-0 | 1-2 | 5 | 0 | 4 | 4 | 0 | 0 | 5 |
| M8 | vs. Marshall | 46 | 7-11 | 1-3 | 10-13 | 7 | 1 | 5 | 5 | 0 | 2 | 25 |



PLAYER INFORMATION

SHELBY MOATS CAREER GBG

2012-13 (Sophomore)

| Date | Opponent | M | FG-A | 3P-A | FT-A | Reb | PF | A | T | B | S | PTS |
|------|------------------|----|------|------|------|-----|----|---|---|---|---|-----|
| N10 | Nicholls State* | 30 | 3-7 | 2-5 | 0-0 | 2 | 1 | 1 | 0 | 0 | 0 | 8 |
| N16 | @Oregon* | 22 | 0-2 | 0-2 | 0-0 | 2 | 5 | 1 | 0 | 0 | 0 | 0 |
| N22 | Davidson* | 18 | 0-2 | 0-2 | 0-0 | 2 | 3 | 1 | 0 | 0 | 0 | 0 |
| N23 | Marist | 18 | 1-6 | 0-4 | 0-0 | 7 | 2 | 0 | 2 | 0 | 1 | 2 |
| N25 | UTEP | 23 | 3-6 | 1-2 | 1-1 | 5 | 2 | 3 | 0 | 0 | 1 | 8 |
| D1 | Villanova | 26 | 2-6 | 0-2 | 2-4 | 1 | 5 | 1 | 3 | 0 | 1 | 6 |
| D6 | @Xavier | 25 | 1-4 | 1-4 | 0-2 | 5 | 4 | 1 | 1 | 0 | 1 | 3 |
| D15 | Alabama A&M | 15 | 0-2 | 0-0 | 0-2 | 4 | 1 | 1 | 0 | 1 | 0 | 0 |
| D17 | Cornell | 14 | 0-1 | 0-0 | 0-2 | 1 | 1 | 3 | 0 | 0 | 0 | 0 |
| D21 | vs. MTSU | 16 | 1-2 | 1-1 | 2-2 | 2 | 1 | 2 | 1 | 0 | 1 | 5 |
| D29 | Butler | 16 | 2-5 | 1-1 | 3-5 | 5 | 4 | 0 | 2 | 0 | 0 | 8 |
| J2 | William & Mary* | 8 | 1-1 | 0-0 | 0-0 | 2 | 4 | 0 | 1 | 0 | 1 | 2 |
| J10 | Kentucky | 27 | 4-7 | 1-1 | 0-0 | 10 | 3 | 1 | 0 | 0 | 0 | 9 |
| J12 | @Arkansas | 24 | 1-1 | 1-1 | 0-0 | 1 | 0 | 0 | 0 | 0 | 2 | 3 |
| J15 | Ole Miss* | 36 | 1-4 | 0-2 | 0-3 | 8 | 2 | 4 | 0 | 0 | 1 | 2 |
| J19 | @South Carolina* | 14 | 1-2 | 0-0 | 1-2 | 0 | 4 | 1 | 2 | 0 | 0 | 3 |
| J23 | Auburn* | 20 | 2-3 | 0-0 | 0-1 | 3 | 3 | 0 | 2 | 0 | 0 | 4 |
| J26 | @Missouri* | 18 | 1-1 | 0-0 | 0-0 | 1 | 1 | 0 | 1 | 0 | 0 | 2 |
| J29 | @Tennessee | 1 | 0-1 | 0-0 | 0-0 | 1 | 0 | 0 | 0 | 0 | 0 | 0 |
| F6 | @LSU | 5 | 0-0 | 0-0 | 0-0 | 1 | 2 | 0 | 0 | 0 | 0 | 0 |
| F13 | Tennessee | 5 | 2-3 | 0-0 | 0-0 | 0 | 1 | 0 | 0 | 0 | 0 | 4 |
| F16 | Texas A&M* | 16 | 1-2 | 0-1 | 0-1 | 1 | 1 | 0 | 0 | 0 | 0 | 2 |
| F20 | @Kentucky | 14 | 0-1 | 0-1 | 0-1 | 5 | 2 | 0 | 1 | 0 | 0 | 0 |
| F23 | @Mississippi St. | 17 | 3-6 | 1-4 | 0-0 | 5 | 2 | 1 | 2 | 0 | 0 | 7 |
| F27 | Georgia | 11 | 1-1 | 0-0 | 0-0 | 1 | 0 | 0 | 0 | 0 | 0 | 2 |
| M2 | @Auburn | 8 | 1-2 | 1-2 | 0-0 | 3 | 2 | 1 | 0 | 0 | 0 | 3 |
| M6 | @Florida | 12 | 0-3 | 0-1 | 0-0 | 2 | 2 | 0 | 1 | 0 | 0 | 0 |
| M9 | South Carolina | 13 | 0-0 | 0-0 | 2-2 | 2 | 4 | 0 | 1 | 1 | 1 | 2 |
| M14 | vs. Arkansas | 14 | 1-2 | 0-0 | 0-0 | 4 | 3 | 1 | 0 | 0 | 0 | 2 |
| M15 | vs. Kentucky | 19 | 2-3 | 1-1 | 2-2 | 3 | 1 | 0 | 0 | 0 | 0 | 7 |
| M16 | vs. Ole Miss | 9 | 0-3 | 0-1 | 0-0 | 1 | 1 | 0 | 1 | 0 | 0 | 0 |

2011-12 (Freshman)

| Date | Opponent | M | FG-A | 3P-A | FT-A | Reb | PF | A | T | B | S | PTS |
|------|-----------------|----|------|------|------|-----|----|---|---|---|---|-----|
| N15 | Bucknell | 9 | 0-2 | 0-1 | 0-0 | 1 | 1 | 2 | 0 | 0 | 0 | 0 |
| N21 | Oregon State | 3 | 0-1 | 0-1 | 0-0 | 0 | 1 | 1 | 0 | 0 | 0 | 0 |
| N25 | Monmouth | 13 | 1-3 | 1-3 | 0-0 | 6 | 1 | 0 | 4 | 0 | 1 | 3 |
| D7 | @Davidson | 2 | 0-0 | 0-0 | 0-0 | 0 | 1 | 1 | 0 | 0 | 0 | 0 |
| D19 | Longwood | 5 | 0-1 | 0-1 | 0-0 | 0 | 0 | 1 | 0 | 0 | 0 | 0 |
| D21 | Lafayette | 12 | 2-3 | 1-2 | 0-1 | 3 | 2 | 0 | 0 | 0 | 0 | 5 |
| D29 | @Marquette | 1 | 0-0 | 0-0 | 0-0 | 0 | 1 | 0 | 0 | 0 | 0 | 0 |
| J10 | @South Carolina | 3 | 0-0 | 0-0 | 0-0 | 0 | 0 | 0 | 0 | 0 | 0 | 0 |
| J24 | Tennessee | 1 | 0-0 | 0-0 | 0-0 | 0 | 0 | 0 | 0 | 0 | 0 | 0 |
| F8 | LSU | 1 | 0-0 | 0-0 | 0-0 | 0 | 0 | 0 | 0 | 0 | 0 | 0 |
| F16 | @Ole Miss | 6 | 0-1 | 0-1 | 0-0 | 3 | 1 | 0 | 0 | 2 | 0 | 0 |
| F19 | @Georgia | 5 | 0-1 | 0-1 | 0-0 | 1 | 0 | 0 | 1 | 1 | 0 | 0 |
| F22 | South Carolina | 0+ | 0-0 | 0-0 | 0-0 | 0 | 0 | 0 | 0 | 0 | 0 | 0 |
| F28 | Florida | 0+ | 0-0 | 0-0 | 0-0 | 0 | 0 | 0 | 0 | 0 | 0 | 0 |
| M9 | vs. Georgia | 2 | 0-1 | 0-1 | 0-0 | 1 | 0 | 0 | 1 | 0 | 0 | 0 |
| M10 | vs. Ole Miss | 1 | 0-0 | 0-0 | 0-0 | 0 | 0 | 0 | 0 | 0 | 0 | 0 |

ROD ODOM CAREER GBG

2012-13 (Junior)

| Date | Opponent | M | FG-A | 3P-A | FT-A | Reb | PF | A | T | B | S | PTS |
|------|-------------------|----|------|------|------|-----|----|---|---|---|---|-----|
| N10 | Nicholls State* | 33 | 3-5 | 1-3 | 0-0 | 7 | 1 | 1 | 3 | 1 | 1 | 7 |
| N16 | @Oregon* | 24 | 3-13 | 1-6 | 2-2 | 3 | 4 | 1 | 4 | 0 | 1 | 9 |
| N22 | Davidson* | 31 | 1-7 | 0-5 | 4-6 | 4 | 0 | 1 | 1 | 1 | 0 | 6 |
| N23 | Marist* | 30 | 2-10 | 0-1 | 1-2 | 4 | 3 | 0 | 1 | 1 | 1 | 5 |
| N25 | UTEP* | 33 | 5-11 | 2-6 | 4-6 | 7 | 1 | 0 | 1 | 1 | 2 | 16 |
| D1 | Villanova* | 31 | 5-13 | 2-6 | 2-2 | 2 | 4 | 1 | 0 | 0 | 0 | 14 |
| D6 | @Xavier* | 31 | 2-5 | 2-4 | 1-4 | 2 | 5 | 0 | 4 | 0 | 0 | 7 |
| D15 | Alabama A&M* | 30 | 6-11 | 4-6 | 1-3 | 2 | 1 | 2 | 1 | 1 | 2 | 17 |
| D17 | Cornell* | 34 | 4-12 | 3-8 | 2-4 | 7 | 1 | 2 | 1 | 0 | 0 | 13 |
| D21 | vs. MTSU* | 19 | 2-4 | 0-1 | 1-1 | 2 | 4 | 0 | 2 | 0 | 1 | 5 |
| D29 | Butler* | 31 | 1-9 | 1-3 | 1-2 | 5 | 3 | 0 | 1 | 2 | 0 | 4 |
| J2 | William & Mary* | 33 | 4-7 | 1-4 | 3-3 | 5 | 0 | 2 | 2 | 2 | 1 | 12 |
| J10 | Kentucky* | 36 | 3-16 | 2-9 | 4-7 | 4 | 3 | 0 | 4 | 0 | 0 | 12 |
| J12 | @Arkansas* | 24 | 2-6 | 1-3 | 0-0 | 4 | 1 | 0 | 2 | 0 | 1 | 5 |
| J15 | Ole Miss* | 25 | 3-6 | 3-6 | 0-2 | 4 | 5 | 1 | 0 | 1 | 0 | 9 |
| J19 | @South Carolina* | 30 | 2-3 | 1-2 | 3-4 | 4 | 3 | 1 | 1 | 0 | 0 | 8 |
| J23 | Auburn* | 29 | 1-8 | 0-3 | 6-6 | 6 | 0 | 0 | 2 | 0 | 0 | 8 |
| J26 | @Missouri* | 32 | 6-12 | 3-5 | 2-2 | 3 | 1 | 2 | 2 | 1 | 1 | 17 |
| J29 | @Tennessee* | 32 | 1-3 | 0-2 | 0-0 | 1 | 1 | 1 | 2 | 1 | 0 | 2 |
| F2 | Alabama | 31 | 3-5 | 1-2 | 1-2 | 6 | 0 | 0 | 0 | 0 | 0 | 8 |
| F6 | @LSU* | 30 | 5-11 | 3-5 | 7-9 | 5 | 3 | 1 | 2 | 1 | 1 | 20 |
| F9 | Arkansas* | 31 | 4-8 | 2-4 | 5-6 | 3 | 3 | 2 | 1 | 2 | 0 | 15 |
| F13 | Tennessee* | 37 | 2-10 | 0-4 | 2-2 | 5 | 2 | 0 | 0 | 0 | 0 | 6 |
| F16 | Texas A&M* | 31 | 6-14 | 4-9 | 3-4 | 7 | 1 | 4 | 0 | 1 | 0 | 19 |
| F20 | @Kentucky* | 38 | 6-13 | 4-6 | 0-2 | 1 | 2 | 0 | 2 | 0 | 0 | 16 |
| F23 | @Mississippi St.* | 22 | 4-7 | 2-5 | 3-5 | 5 | 2 | 2 | 0 | 0 | 0 | 13 |
| F27 | Georgia* | 23 | 1-6 | 1-4 | 2-2 | 2 | 3 | 0 | 1 | 0 | 0 | 5 |
| M2 | @Auburn* | 33 | 3-11 | 1-6 | 0-0 | 7 | 4 | 0 | 2 | 2 | 1 | 7 |
| M6 | @Florida* | 29 | 1-8 | 1-6 | 1-2 | 6 | 1 | 1 | 0 | 0 | 0 | 4 |
| M9 | South Carolina* | 34 | 6-11 | 2-4 | 4-6 | 8 | 1 | 0 | 0 | 1 | 1 | 18 |
| M14 | vs. Arkansas* | 36 | 6-13 | 5-9 | 3-11 | 7 | 3 | 3 | 1 | 4 | 2 | 20 |
| M15 | vs. Kentucky* | 33 | 3-7 | 1-1 | 2-2 | 6 | 4 | 0 | 0 | 2 | 0 | 9 |
| M16 | vs. Ole Miss* | 23 | 3-14 | 1-8 | 0-0 | 5 | 4 | 0 | 0 | 1 | 0 | 7 |

2011-12 (Sophomore)

| Date | Opponent | M | FG-A | 3P-A | FT-A | Reb | PF | A | T | B | S | PTS |
|------|-------------------|----|------|------|------|-----|----|---|---|---|---|-----|
| N11 | Oregon | 21 | 0-4 | 0-1 | 3-6 | 8 | 4 | 2 | 0 | 1 | 0 | 3 |
| N13 | Cleveland State | 16 | 1-2 | 1-1 | 0-0 | 1 | 3 | 0 | 1 | 0 | 0 | 3 |
| N15 | Bucknell | 16 | 4-7 | 2-3 | 0-1 | 3 | 3 | 0 | 0 | 0 | 0 | 10 |
| N19 | N.C. State | 12 | 1-2 | 1-2 | 0-0 | 1 | 3 | 0 | 1 | 0 | 0 | 3 |
| N21 | Oregon State | 17 | 2-3 | 0-0 | 0-0 | 0 | 1 | 0 | 2 | 1 | 0 | 4 |
| N25 | Monmouth* | 17 | 1-1 | 1-1 | 1-2 | 3 | 3 | 0 | 0 | 0 | 1 | 4 |
| N28 | Xavier | 12 | 1-2 | 0-1 | 0-0 | 1 | 1 | 0 | 1 | 1 | 0 | 2 |
| D7 | @Louisville | 10 | 1-3 | 0-1 | 0-0 | 2 | 2 | 0 | 0 | 0 | 1 | 2 |
| D2 | @Davidson | 25 | 2-5 | 0-2 | 0-0 | 4 | 4 | 0 | 3 | 1 | 2 | 4 |
| D17 | Indiana State* | 16 | 0-2 | 0-2 | 0-0 | 1 | 0 | 0 | 0 | 1 | 0 | 0 |
| D19 | Longwood | 19 | 1-3 | 1-2 | 0-0 | 4 | 2 | 1 | 4 | 0 | 1 | 3 |
| D21 | Lafayette | 22 | 2-5 | 1-3 | 0-0 | 3 | 2 | 0 | 0 | 0 | 0 | 5 |
| D29 | @Marquette | 12 | 2-4 | 1-2 | 0-0 | 2 | 4 | 0 | 0 | 0 | 0 | 5 |
| J2 | Miami (Ohio) | 14 | 0-1 | 0-1 | 0-0 | 1 | 2 | 0 | 0 | 0 | 0 | 0 |
| J7 | Auburn | 16 | 1-4 | 0-1 | 3-5 | 6 | 2 | 0 | 2 | 0 | 0 | 5 |
| J10 | @South Carolina | 19 | 2-2 | 2-2 | 0-0 | 0 | 1 | 1 | 1 | 0 | 0 | 6 |
| J14 | Georgia | 9 | 2-3 | 1-2 | 0-1 | 0 | 4 | 0 | 1 | 0 | 0 | 5 |
| J19 | @Alabama | 12 | 1-3 | 1-2 | 0-0 | 0 | 0 | 1 | 1 | 1 | 0 | 3 |
| J21 | Mississippi State | 8 | 0-1 | 0-0 | 0-0 | 1 | 3 | 1 | 0 | 0 | 0 | 0 |
| J24 | Tennessee | 16 | 0-1 | 0-1 | 1-3 | 3 | 3 | 2 | 0 | 0 | 0 | 1 |
| J28 | MTSU | 8 | 0-0 | 0-0 | 0-0 | 1 | 1 | 1 | 0 | 0 | 0 | 0 |
| J31 | @Arkansas | 12 | 0-2 | 0-1 | 0-0 | 1 | 1 | 2 | 0 | 0 | 0 | 0 |
| F4 | @Florida | 10 | 0-1 | 0-1 | 2-2 | 2 | 2 | 1 | 2 | 0 | 0 | 2 |
| F8 | LSU | 20 | 0-3 | 0-1 | 0-0 | 6 | 1 | 1 | 0 | 0 | 1 | 0 |
| F11 | Kentucky | 9 | 0-0 | 0-0 | 0-0 | 0 | 1 | 1 | 0 | 1 | 0 | 0 |
| F16 | @Ole Miss | 20 | 1-1 | 1-1 | 2-2 | 3 | 2 | 1 | 0 | 0 | 1 | 5 |
| F19 | @Georgia | 14 | 0-0 | 0-0 | 0-0 | 1 | 2 | 0 | 0 | 1 | 0 | 0 |
| F22 | South Carolina | 12 | 0-1 | 0-1 | 0-0 | 0 | 1 | 2 | 0 | 0 | 0 | 0 |
| F25 | @Kentucky | 5 | 0-0 | 0-0 | 0-0 | 0 | 0 | 0 | 0 | 0 | 0 | 0 |
| F28 | Florida | 13 | 1-2 | 1-2 | 0-0 | 1 | 0 | 0 | 0 | 0 | 0 | 3 |
| M3 | @Tennessee | 10 | 1-1 | 0-0 | 0-0 | 3 | 1 | 0 | 0 | 0 | 0 | 2 |
| M9 | vs. Georgia | 22 | 1-3 | 0-1 | 0-0 | 2 | 1 | 1 | 0 | 0 | 0 | 2 |
| M10 | vs. Ole Miss | 6 | 0-1 | 0-0 | 0-0 | 2 | 3 | 0 | 0 | 0 | 0 | 0 |
| M11 | vs. Kentucky | 7 | 0-0 | 0-0 | 0-0 | 0 | 2 | 0 | 0 | 0 | 0 | 0 |
| M15 | vs. Harvard | 27 | 2-4 | 1-2 | 0-0 | 6 | 2 | 1 | 1 | 0 | 0 | 5 |
| M17 | vs. Wisconsin | 13 | 0-0 | 0-0 | 0-0 | 1 | 3 | 0 | 0 | 0 | 0 | 0 |



PLAYER INFORMATION

ROD ODOM CAREER GBG

2010-11 (Freshman)

| Date | Opponent | M | FG-A | 3P-A | FT-A | Reb | PF | A | T | B | S | PTS |
|------|-------------------|----|------|------|------|-----|----|---|---|---|---|-----|
| N12 | Presbyterian | 14 | 2-3 | 1-2 | 0-0 | 0 | 1 | 0 | 0 | 0 | 0 | 5 |
| N18 | Nebraska | 7 | 0-2 | 0-2 | 0-0 | 3 | 3 | 0 | 0 | 0 | 0 | 0 |
| N19 | West Virginia | 23 | 5-9 | 1-4 | 0-0 | 2 | 3 | 0 | 1 | 0 | 0 | 11 |
| N21 | North Carolina | 9 | 1-2 | 1-1 | 0-0 | 1 | 2 | 0 | 0 | 0 | 0 | 3 |
| N24 | Grambling State | 19 | 2-7 | 1-5 | 3-4 | 8 | 1 | 0 | 1 | 0 | 0 | 8 |
| N27 | Appalachian State | 9 | 1-4 | 0-1 | 0-13 | 0 | 0 | 0 | 0 | 0 | 1 | 2 |
| D1 | Western Kentucky | 17 | 4-6 | 3-3 | 0-0 | 6 | 2 | 1 | 2 | 0 | 0 | 11 |
| D4 | Belmont* | 17 | 2-3 | 2-2 | 0-0 | 0 | 3 | 0 | 5 | 0 | 1 | 6 |
| D8 | Missouri | 14 | 2-3 | 2-3 | 0-1 | 1 | 1 | 1 | 0 | 2 | 4 | 6 |
| D18 | SE Louisiana | 19 | 2-6 | 2-4 | 1-2 | 5 | 2 | 0 | 0 | 1 | 0 | 7 |
| D21 | MTSU* | 25 | 1-4 | 1-4 | 0-0 | 6 | 4 | 2 | 2 | 0 | 2 | 3 |
| D29 | Marquette | 10 | 0-0 | 0-0 | 0-0 | 0 | 2 | 1 | 0 | 0 | 0 | 0 |
| J2 | Davidson* | 26 | 0-4 | 0-4 | 0-0 | 5 | 0 | 0 | 0 | 0 | 0 | 0 |
| J8 | South Carolina | 14 | 1-3 | 0-1 | 0-0 | 4 | 1 | 1 | 1 | 0 | 0 | 2 |
| J12 | Georgia | 17 | 1-2 | 1-2 | 0-0 | 0 | 3 | 0 | 1 | 0 | 0 | 3 |
| J15 | Tennessee | 22 | 3-7 | 0-3 | 0-0 | 6 | 4 | 0 | 4 | 0 | 2 | 6 |
| J19 | Ole Miss | 18 | 2-3 | 1-1 | 0-0 | 2 | 2 | 1 | 1 | 0 | 0 | 5 |
| J22 | Saint Mary's | 19 | 1-3 | 1-2 | 0-0 | 2 | 4 | 0 | 3 | 1 | 1 | 3 |
| J27 | Mississippi State | 7 | 0-2 | 0-2 | 0-0 | 1 | 3 | 0 | 0 | 0 | 0 | 0 |
| J29 | Arkansas | 27 | 3-5 | 3-5 | 3-4 | 1 | 4 | 0 | 1 | 0 | 0 | 12 |
| F1 | Florida* | 20 | 1-2 | 0-0 | 0-0 | 2 | 1 | 0 | 1 | 0 | 0 | 2 |
| F5 | South Carolina | 18 | 3-3 | 3-3 | 0-0 | 3 | 1 | 2 | 3 | 0 | 2 | 9 |
| F10 | Alabama | 9 | 0-3 | 0-1 | 0-0 | 2 | 3 | 0 | 3 | 0 | 0 | 0 |
| F12 | Kentucky | 20 | 2-4 | 1-3 | 0-0 | 7 | 4 | 0 | 1 | 0 | 1 | 5 |
| F16 | Georgia* | 27 | 4-6 | 3-5 | 0-0 | 5 | 2 | 1 | 0 | 0 | 1 | 11 |
| F19 | Auburn* | 20 | 0-3 | 0-2 | 0-0 | 2 | 2 | 0 | 2 | 0 | 0 | 0 |
| F22 | Tennessee | 7 | 0-0 | 0-0 | 0-0 | 0 | 0 | 0 | 0 | 0 | 0 | 0 |
| F26 | LSU* | 9 | 0-1 | 0-1 | 0-0 | 0 | 1 | 0 | 1 | 0 | 0 | 0 |
| M1 | Kentucky | 7 | 0-0 | 0-0 | 0-0 | 0 | 1 | 0 | 0 | 0 | 0 | 0 |
| M5 | Florida | 26 | 4-7 | 1-3 | 1-2 | 5 | 5 | 1 | 0 | 0 | 0 | 10 |
| M10 | LSU* | 11 | 0-4 | 0-3 | 2-2 | 2 | 4 | 0 | 0 | 0 | 0 | 4 |
| M11 | Mississippi State | 11 | 0-1 | 0-0 | 0-0 | 2 | 2 | 0 | 1 | 0 | 0 | 0 |
| M12 | Florida | 6 | 0-2 | 0-2 | 0-0 | 0 | 0 | 1 | 1 | 0 | 0 | 0 |
| M17 | Richmond | 9 | 0-1 | 0-1 | 0-0 | 2 | 0 | 0 | 2 | 0 | 0 | 0 |

DAI-JON PARKER CAREER GBG

2012-13 (Sophomore)

| Date | Opponent | M | FG-A | 3P-A | FT-A | Reb | PF | A | T | B | S | PTS |
|------|-------------------|----|------|------|------|-----|----|---|---|---|---|-----|
| D17 | Cornell | 28 | 1-3 | 0-2 | 0-0 | 3 | 2 | 1 | 1 | 0 | 0 | 2 |
| D21 | vs. MTSU | 22 | 0-2 | 0-1 | 0-0 | 2 | 1 | 1 | 0 | 0 | 2 | 0 |
| D29 | Butler | 21 | 2-5 | 1-2 | 0-0 | 3 | 1 | 0 | 1 | 0 | 0 | 5 |
| J2 | William & Mary | 27 | 1-5 | 1-3 | 1-2 | 3 | 0 | 2 | 2 | 3 | 2 | 4 |
| J10 | Kentucky | 23 | 3-8 | 2-5 | 0-0 | 4 | 3 | 1 | 1 | 0 | 1 | 8 |
| J12 | @Arkansas | 18 | 0-3 | 0-3 | 0-0 | 1 | 0 | 2 | 4 | 0 | 0 | 0 |
| J15 | Ole Miss* | 38 | 5-9 | 2-3 | 4-7 | 6 | 2 | 4 | 2 | 0 | 1 | 16 |
| J19 | @South Carolina* | 31 | 2-7 | 1-2 | 6-7 | 5 | 3 | 3 | 5 | 0 | 0 | 11 |
| J23 | Auburn* | 21 | 1-3 | 0-1 | 4-5 | 2 | 4 | 4 | 1 | 0 | 0 | 6 |
| J26 | @Missouri* | 28 | 3-7 | 2-5 | 0-2 | 2 | 1 | 3 | 1 | 0 | 1 | 8 |
| J29 | @Tennessee* | 22 | 3-5 | 0-0 | 1-2 | 1 | 3 | 2 | 2 | 0 | 1 | 7 |
| F2 | Alabama* | 23 | 0-2 | 0-0 | 0-0 | 0 | 3 | 3 | 2 | 0 | 0 | 0 |
| F6 | @LSU* | 37 | 3-8 | 2-4 | 3-4 | 9 | 1 | 4 | 1 | 1 | 0 | 11 |
| F9 | Arkansas* | 32 | 1-5 | 0-4 | 1-4 | 6 | 3 | 2 | 2 | 0 | 1 | 3 |
| F13 | Tennessee* | 26 | 3-4 | 1-1 | 0-0 | 1 | 2 | 3 | 2 | 0 | 1 | 7 |
| F16 | Texas A&M* | 38 | 6-9 | 5-7 | 0-0 | 5 | 3 | 2 | 0 | 2 | 0 | 17 |
| F20 | @Kentucky* | 25 | 0-3 | 0-1 | 1-2 | 7 | 3 | 3 | 1 | 0 | 0 | 1 |
| F23 | @Mississippi St.* | 34 | 2-7 | 1-4 | 0-0 | 13 | 1 | 6 | 1 | 1 | 0 | 5 |
| F27 | Georgia* | 35 | 1-5 | 0-4 | 2-2 | 4 | 2 | 2 | 0 | 0 | 3 | 4 |
| M2 | @Auburn* | 31 | 2-8 | 2-4 | 2-2 | 4 | 3 | 1 | 2 | 0 | 0 | 8 |
| M6 | @Florida | 29 | 3-8 | 1-2 | 0-2 | 6 | 1 | 1 | 2 | 0 | 1 | 7 |
| M9 | South Carolina* | 34 | 5-7 | 3-4 | 5-6 | 5 | 0 | 3 | 1 | 0 | 0 | 18 |
| M14 | vs. Arkansas* | 25 | 4-7 | 2-5 | 1-2 | 7 | 3 | 3 | 2 | 0 | 0 | 11 |
| M15 | vs. Kentucky* | 34 | 5-8 | 2-3 | 0-0 | 6 | 2 | 2 | 0 | 0 | 2 | 12 |
| M16 | vs. Ole Miss* | 31 | 4-7 | 1-3 | 0-1 | 7 | 4 | 2 | 3 | 0 | 1 | 9 |

DAI-JON PARKER CAREER GBG

2011-12 (Freshman)

| Date | Opponent | M | FG-A | 3P-A | FT-A | Reb | PF | A | T | B | S | PTS |
|------|-------------------|----|------|------|------|-----|----|---|---|---|---|-----|
| N11 | Oregon | 9 | 0-3 | 0-2 | 0-2 | 1 | 0 | 0 | 1 | 0 | 1 | 0 |
| N13 | Cleveland State | 7 | 0-2 | 0-1 | 0-0 | 0 | 1 | 0 | 0 | 1 | 0 | 0 |
| N15 | Bucknell | 22 | 2-10 | 1-7 | 2-2 | 2 | 1 | 0 | 0 | 1 | 2 | 7 |
| N19 | N.C. State | 9 | 1-3 | 1-3 | 0-0 | 1 | 2 | 0 | 0 | 0 | 0 | 3 |
| N21 | Oregon State | 13 | 1-3 | 0-2 | 0-0 | 0 | 1 | 2 | 2 | 0 | 0 | 2 |
| N25 | Monmouth | 17 | 4-6 | 2-4 | 0-0 | 3 | 0 | 3 | 1 | 1 | 0 | 10 |
| N28 | Xavier | 6 | 0-0 | 0-0 | 0-0 | 0 | 2 | 0 | 1 | 1 | 0 | 0 |
| D2 | @Louisville | 4 | 0-1 | 0-1 | 0-0 | 1 | 0 | 1 | 0 | 0 | 0 | 0 |
| D7 | @Davidson | 7 | 0-0 | 0-0 | 0-0 | 0 | 1 | 0 | 0 | 0 | 0 | 0 |
| D17 | Indiana State | 15 | 0-1 | 0-1 | 0-0 | 0 | 0 | 1 | 0 | 0 | 0 | 0 |
| D19 | Longwood | 15 | 0-4 | 0-1 | 0-0 | 1 | 0 | 1 | 0 | 0 | 0 | 0 |
| D21 | Lafayette | 15 | 1-4 | 0-2 | 0-0 | 0 | 0 | 1 | 2 | 1 | 1 | 2 |
| D29 | @Marquette | 12 | 0-1 | 0-0 | 0-0 | 1 | 2 | 1 | 1 | 1 | 1 | 0 |
| J2 | Miami (Ohio) | 6 | 0-3 | 0-1 | 0-0 | 0 | 0 | 1 | 0 | 0 | 0 | 0 |
| J7 | Auburn | 16 | 2-4 | 2-3 | 0-1 | 1 | 1 | 0 | 0 | 0 | 0 | 6 |
| J10 | @South Carolina | 15 | 1-1 | 1-1 | 0-0 | 1 | 0 | 2 | 0 | 0 | 0 | 3 |
| J14 | Georgia | 14 | 1-2 | 0-1 | 4-4 | 5 | 1 | 0 | 0 | 0 | 0 | 6 |
| J19 | @Alabama | 14 | 0-0 | 0-0 | 0-0 | 2 | 1 | 0 | 1 | 0 | 0 | 0 |
| J21 | Mississippi State | 10 | 0-1 | 0-1 | 0-0 | 4 | 2 | 1 | 1 | 0 | 0 | 0 |
| J24 | Tennessee | 15 | 1-2 | 1-1 | 0-0 | 0 | 0 | 1 | 0 | 0 | 0 | 3 |
| J28 | MTSU | 11 | 0-1 | 0-0 | 0-0 | 1 | 1 | 0 | 1 | 0 | 0 | 0 |
| J31 | @Arkansas | 4 | 0-0 | 0-0 | 0-0 | 0 | 0 | 0 | 0 | 0 | 0 | 0 |
| F4 | @Florida | 4 | 0-2 | 0-2 | 0-0 | 1 | 0 | 0 | 1 | 0 | 0 | 0 |
| F8 | LSU | 11 | 0-3 | 0-2 | 0-0 | 0 | 1 | 0 | 0 | 0 | 0 | 0 |
| F11 | Kentucky | 6 | 0-0 | 0-0 | 0-0 | 1 | 0 | 0 | 0 | 0 | 0 | 0 |
| F16 | @Ole Miss | 16 | 1-2 | 1-2 | 0-0 | 2 | 2 | 2 | 2 | 0 | 2 | 3 |
| F19 | @Georgia | 10 | 1-2 | 1-2 | 0-0 | 0 | 2 | 0 | 2 | 0 | 0 | 3 |
| F22 | South Carolina | 8 | 0-0 | 0-0 | 0-0 | 1 | 0 | 0 | 2 | 0 | 0 | 0 |
| F25 | @Kentucky | 10 | 2-3 | 0-1 | 0-0 | 0 | 3 | 1 | 0 | 0 | 0 | 4 |
| F28 | Florida | 11 | 1-1 | 0-0 | 0-0 | 1 | 2 | 1 | 0 | 0 | 0 | 2 |
| M3 | @Tennessee | 7 | 0-0 | 0-0 | 0-0 | 0 | 1 | 1 | 1 | 0 | 0 | 0 |
| M9 | vs. Georgia | 14 | 0-0 | 0-0 | 0-0 | 3 | 0 | 1 | 0 | 0 | 0 | 0 |
| M10 | vs. Ole Miss | 11 | 2-3 | 1-2 | 0-0 | 1 | 2 | 0 | 0 | 0 | 0 | 5 |
| M11 | vs. Kentucky | 7 | 0-1 | 0-0 | 0-0 | 0 | 0 | 0 | 0 | 0 | 1 | 0 |
| M15 | vs. Harvard | 12 | 0-0 | 0-0 | 0-0 | 0 | 0 | 1 | 0 | 0 | 1 | 0 |
| M17 | vs. Wisconsin | 15 | 1-2 | 0-1 | 0-0 | 1 | 0 | 1 | 0 | 0 | 0 | 2 |

JAMES SIAKAM CAREER GBG

2012-13 (RS Sophomore)

| Date | Opponent | M | FG-A | 3P-A | FT-A | Reb | PF | A | T | B | S | PTS |
|------|------------------|----|------|------|------|-----|----|---|---|---|---|-----|
| N10 | Nicholls State | 9 | 1-1 | 0-0 | 2-2 | 1 | 4 | 1 | 0 | 0 | 0 | 4 |
| N16 | @Oregon | 13 | 0-1 | 0-0 | 0-2 | 0 | 0 | 0 | 0 | 0 | 0 | 0 |
| N22 | Davidson | 11 | 2-2 | 0-0 | 0-0 | 0 | 1 | 0 | 1 | 0 | 0 | 4 |
| N23 | Marist | 19 | 3-5 | 0-0 | 2-4 | 8 | 2 | 0 | 3 | 1 | 2 | 8 |
| N25 | UTEP | 11 | 0-2 | 0-0 | 2-2 | 4 | 3 | 0 | 1 | 0 | 1 | 2 |
| D1 | Villanova | 11 | 0-0 | 0-0 | 0-0 | 1 | 1 | 0 | 0 | 0 | 0 | 0 |
| D6 | @Xavier | 14 | 0-0 | 0-0 | 1-2 | 2 | 3 | 0 | 1 | 0 | 0 | 1 |
| D15 | Alabama A&M | 9 | 1-1 | 0-0 | 1-2 | 2 | 2 | 1 | 0 | 0 | 0 | 3 |
| D17 | Cornell | 6 | 0-0 | 0-0 | 0-0 | 2 | 0 | 1 | 1 | 1 | 1 | 0 |
| D21 | vs. MTSU | 20 | 0-0 | 0-0 | 0-0 | 1 | 3 | 1 | 1 | 2 | 0 | 0 |
| D29 | Butler | 9 | 0-2 | 0-0 | 0-0 | 2 | 0 | 0 | 2 | 0 | 0 | 0 |
| J2 | William & Mary | 2 | 0-0 | 0-0 | 0-0 | 1 | 0 | 0 | 0 | 0 | 0 | 0 |
| J15 | @Arkansas | 19 | 1-4 | 0-0 | 2-6 | 7 | 4 | 0 | 2 | 0 | 1 | 4 |
| J17 | Ole Miss | 1 | 0-0 | 0-0 | 0-0 | 0 | 0 | 0 | 0 | 0 | 0 | 0 |
| J26 | @Missouri | 16 | 3-6 | 0-0 | 1-3 | 4 | 3 | 1 | 1 | 1 | 1 | 7 |
| J29 | @Tennessee* | 13 | 1-2 | 0-0 | 2-2 | 2 | 1 | 0 | 1 | 0 | 0 | 4 |
| F2 | Alabama | 8 | 2-2 | 0-0 | 0-0 | 0 | 1 | 0 | 1 | 0 | 0 | 4 |
| F6 | @LSU | 9 | 1-2 | 0-0 | 0-1 | 1 | 0 | 0 | 0 | 0 | 0 | 2 |
| F9 | Arkansas | 3 | 0-0 | 0-0 | 0-0 | 1 | 1 | 1 | 0 | 0 | 1 | 0 |
| F13 | Tennessee | 3 | 0-0 | 0-0 | 0-0 | 0 | 0 | 0 | 1 | 0 | 0 | 0 |
| F23 | @Mississippi St. | 13 | 3-6 | 0-0 | 0-0 | 7 | 0 | 0 | 0 | 0 | 0 | 6 |
| M6 | @Florida | 7 | 0-3 | 0-1 | 2-4 | 2 | 1 | 1 | 0 | 2 | 0 | 2 |
| M9 | South Carolina | 0+ | 1-1 | 0-0 | 0-0 | 1 | 0 | 0 | 0 | 0 | 0 | 2 |
| M14 | vs. Arkansas | 1 | 0-0 | 0-0 | 0-0 | 0 | 0 | 0 | 0 | 0 | 0 | 0 |
| M15 | vs. Kentucky | 1 | 0-0 | 0-0 | 0-0 | 0 | 0 | 0 | 0 | 0 | 0 | 0 |
| M16 | vs. Ole Miss | 1 | 0-0 | 0-0 | 0-0 | 1 | 0 | 0 | 0 | 0 | 0 | 0 |



PLAYER INFORMATION

JAMES SIAKAM CAREER GBG

2011-12 (RS Freshman)

| Date | Opponent | M | FG-A | 3P-A | FT-A | Reb | PF | A | T | B | S | PTS |
|------|-----------------|----|------|------|------|-----|----|---|---|---|---|-----|
| N13 | Cleveland State | 0 | 0-1 | 0-0 | 0-0 | 0 | 0 | 0 | 0 | 0 | 0 | 0 |
| N15 | Bucknell | 2 | 0-1 | 0-0 | 1-2 | 0 | 0 | 0 | 0 | 0 | 0 | 1 |
| N25 | Monmouth | 1 | 0-0 | 0-0 | 1-2 | 0 | 0 | 0 | 0 | 0 | 0 | 1 |
| D19 | Longwood | 5 | 0-0 | 0-0 | 0-0 | 0 | 0 | 0 | 1 | 0 | 0 | 0 |
| D21 | Lafayette | 4 | 0-0 | 0-0 | 0-0 | 0 | 0 | 0 | 0 | 0 | 0 | 0 |
| D29 | @Marquette | 1 | 0-0 | 0-0 | 0-0 | 0 | 0 | 0 | 0 | 0 | 0 | 0 |
| J7 | Auburn | 3 | 0-0 | 0-0 | 0-0 | 1 | 0 | 0 | 0 | 0 | 0 | 0 |
| J24 | Tennessee | 1 | 0-0 | 0-0 | 0-0 | 0 | 0 | 0 | 0 | 0 | 0 | 0 |
| F4 | @Florida | 0+ | 0-0 | 0-0 | 0-0 | 0 | 0 | 0 | 0 | 0 | 0 | 0 |
| F8 | LSU | 1 | 1-1 | 0-0 | 0-0 | 0 | 1 | 0 | 0 | 0 | 0 | 2 |
| F16 | @Ole Miss | 4 | 1-1 | 0-0 | 0-0 | 1 | 2 | 0 | 0 | 0 | 0 | 2 |
| F28 | Florida | 0+ | 0-0 | 0-0 | 0-0 | 0 | 0 | 0 | 0 | 0 | 0 | 0 |
| M9 | vs.Georgia | 3 | 0-1 | 0-0 | 0-0 | 0 | 0 | 0 | 0 | 1 | 0 | 0 |

NATHAN WATKINS CAREER GBG

2012-13 (Freshman)

| Date | Opponent | M | FG-A | 3P-A | FT-A | Reb | PF | A | T | B | S | PTS |
|------|------------------|----|------|------|------|-----|----|---|---|---|---|-----|
| N25 | UTEP | 1 | 0-0 | 0-0 | 0-0 | 0 | 0 | 0 | 0 | 0 | 0 | 0 |
| D15 | Alabama A&M | 1 | 0-0 | 0-0 | 0-0 | 1 | 0 | 0 | 2 | 0 | 0 | 0 |
| F23 | @Mississippi St. | 2 | 0-1 | 0-1 | 0-0 | 0 | 0 | 0 | 0 | 0 | 1 | 0 |
| M9 | South Carolina | 0+ | 0-0 | 0-0 | 0-0 | 0 | 0 | 0 | 0 | 0 | 0 | 0 |
| M15 | vs. Kentucky | 1 | 0-0 | 0-0 | 0-0 | 0 | 0 | 0 | 0 | 0 | 0 | 0 |