



HARTFORD HAWKS (6-1, 0-0 AE)

vs. Vanderbilt (6-3, 0-0 SEC)

December 6, 2012 • 8:00 p.m. (ET)

Nashville, TN - Memorial Gymnasium

On-Air: WWUH 91.3 FM

GAME 8



Setting the Scene: The Hawks travel outside of the Northeast for the first time on Thursday when they meet the Vanderbilt Commodores in a first ever meeting between the two squads. The trip to the Music City is also the first time that the Hawks have played in the Volunteer State in the 13 previous seasons under Coach Rizzotti.

Inside the Series: Today's game is the first ever meeting between Hartford and Vanderbilt and just the fifth all-time against a team from the Southeastern Conference. Overall the Hawks are 0-4 against SEC teams. The first ever meeting against and SEC foe came against LSU in 1992. The other three games have all come under Coach Rizzotti and all in postseason play. Under Coach Rizzotti, the Hawks have played Georgia (2006) and LSU (2010) in the NCAA Tournament and South Carolina (2008) Postseason WNIT.

The Coaches: The longest tenured head coach at Hartford and in the America East, **Jennifer Rizzotti**, returns for her 14th season. She is credited with leading the Hawks to five America East Championships (2002, 2005, 2006, 2008, 2011), four regular season conference championships (2005-06, 2006-07, 2007-08, 2009-10) and two first round victories in the NCAA Tournament (3/19/06 :: 64-58 over Temple & 3/22/08 :: 59-55 over Syracuse). Rizzotti is the winningest coach in school history with a 261-151 overall record (.633). The New Fairfield, CT native was an All-American point guard at the University of Connecticut under Hall of Fame head coach Geno Auriemma. **Melanie Balcomb** is in her 11th season at the helm of the Vanderbilt Commodores. Balcomb's record at Vanderbilt speaks for it self as she has led her squad to the NCAA Tournament and 20 or more wins in every season in Nashville. Included in that streak are three SEC Championships, four trips to the Sweet 16 and eight top-25 finishes. Since arriving in 2002, Balcomb has posted a 244-97 (.716) record at vanderbilt, averaging 23.8 wins per season.

2012-13 Women's Basketball Schedule (6-1, 0-0 America East)

Date	Day	Opponent	Time/Result
Nov. 9	Fri.	LOYOLA (Md.)	W, 64-50
Nov. 13	Tue.	MARIST	W, 64-53
Nov. 16	Fri.	at Central Connecticut	W, 76-62
Nov. 18	Sun.	RICHMOND	W, 59-54
Nov. 21	Wed.	at Massachusetts	W, 71-65
Nov. 25	Sun.	ST. JOHN'S	L, 54-66
Dec. 1	Sat.	PROVIDENCE	W, 66-39
Dec. 6	Thu.	at Vanderbilt	7:00 p.m.
Dec. 9	Sun.	at Dartmouth	2:00 p.m.
Dec. 16	Sun.	QUINNIPIAC	2:00 p.m.
Dec. 22	Sat.	CONNECTICUT (SNY)	1:00 p.m.
Maryland Terapin Classic			
Dec. 28	Fri.	vs. UMES	2:30 p.m.
Dec. 29	Sat.	vs. Maryland/Brown	4:30 p.m./7:00 p.m.
Jan. 2	Wed.	at Binghamton *	7:00 p.m.
Jan. 5	Sat.	BOSTON UNIVERSITY *	2:00 p.m.
Jan. 9	Wed.	at Maine *	7:30 p.m.
Jan. 12	Sat.	STONY BROOK *	2:00 p.m.
Jan. 16	Wed.	UMBC *	12:00 p.m.
Jan. 19	Sat.	at Albany *	2:00 p.m.
Jan. 23	Wed.	NEW HAMPSHIRE *	7:00 p.m.
Jan. 30	Wed.	at Vermont *	7:00 p.m.
Feb. 2	Sat.	at Boston University *	1:00 p.m.
Feb. 6	Wed.	BINGHAMTON *	7:00 p.m.
Feb. 9	Sat.	at Stony Brook *	4:00 p.m.
Feb. 13	Wed.	MAINE * (ESPN 3)	7:00 p.m.
Feb. 17	Sun.	ALBANY * (ESPN 3)	2:00 p.m.
Feb. 20	Wed.	at New Hampshire *	7:00 p.m.
Feb. 27	Wed.	at UMBC *	7:00 p.m.
Mar. 2	Sat.	VERMONT *	2:00 p.m.
AMERICA EAST CHAMPIONSHIP (ALBANY, NY)			
MAR. 8	FRI.	QUARTERFINALS VS. TBD	TBD
MAR. 10	SUN.	SEMIFINALS VS. TBD	TBD
MAR. 16	SAT.	CHAMPIONSHIP VS. TBD	TBD

HOME GAMES IN BOLD CAPS | * Denotes America East

HARTFORD PROBABLE STARTERS

No.	Name	Pos.	Ht.	Yr.	PPG	RPG	MPG	Notes
2	Daphne Elliott	G	5-6	Sr.	8.4	2.6	22.4	27% 3ptFG (8-30), 15 steals
23	Alyssa Englert	G	5-9	Jr.	4.7	2.4	27.0	36% FG (11-31), 27 assists
25	Amber Bepko	G	5-9	So.	10.4	3.4	28.4	37% 3ptFG (13-35), 19 steals
22	Katie Roth	F	6-2	R-Fr.	6.9	5.4	21.9	45% FG (18-40)
24	Ruthanne Doherty	F	5-11	Sr.	8.9	4.9	24.7	46% FG (27-59), 10 steals

"PUT ME IN COACH, I'M READY TO PLAY" - FIRST OFF THE BENCH

No.	Name	Pos.	Ht.	Yr.	PPG	RPG	MPG	Notes
44	Nikkia Smith	F	6-1	Sr.	11.0	4.9	20.0	50% FG (29-58), 11 assists
10	Alex Hall	G	5-7	Sr.	5.9	2.3	20.4	42% FG (16-38), 11 assists
4	Christie Michals	F	6-1	Fr.	3.4	0.6	10.6	5 assists
21	Shanise Bultron	G	5-8	So.	2.7	1.0	10.3	42% 3ptFG 5-12 3ptFG
31	Cherelle Moore	F	6-0	So.	1.0	0.9	8.0	
13	Taylor Clark	F	6-0	Jr.	1.3	0.7	5.7	
33	Mallory Shickora	G	5-8	Fr.	2.5	0.0	9.0	

UNIVERSITY OF HARTFORD SPORTS INFORMATION

ASSISTANT DIRECTOR OF ATHLETICS/ COMMUNICATIONS
 (Women's Basketball Contact): Dan Ruede
 Office Phone: (860) 768-4501
 Cell Phone: (860) 748-3950
 Email: ruede@hartford.edu

ASSISTANT DIRECTOR/ATHLETICS COMMUNICATIONS:
 Sarah Cote
ATHLETICS COMMUNICATIONS ASSISTANT/BROADCAST MEDIA:
 Keith Arsenault

Sports Information Address:
 200 Bloomfield Ave.
 West Hartford, CT 06117

Press Row Phone: (860) 768-5042

HARTFORD WOMEN'S BASKETBALL

A Glance at the Commodores: Vanderbilt enters its third game in the first six days of December with a 6-3 overall record after defeating Western Kentucky on the road on Tuesday night. In that game, junior guard Christina Foggie made her return to the court after missing two games and led the Commodores against Western Kentucky with 18 points in 30 minutes. She was one of four players to score in double figures, with Jasmine Lister joining her with 13 points and completing a double double with 11 assists. For the season, Foggie leads all Commodores with an average of 16.0 points-per-game, one of three players to average double figures. Tiffany Clarke is second on the team averaging 14.3 ppg while leading the team with a 7.0 rebounds-per-game average. Rounding out the leading scorers is Lister who averages 11.8 ppg and leads the team with 49 total assists. As a team, Vanderbilt is outscoring their opposition by 9.4 points-per-game, while shooting at a 42.9 percent clip (219-511). They are also outrebounding their opponents by 7.7 rebounds-per-contest.

Experience Breeds Confidence: Hartford stands as one of the most seasoned programs in the America East with four senior's and all-five starters returning to the hardwood. Leading the efforts will be the senior class of Ruthanne Doherty, Nikkia Smith, Daphne Elliott and Alex Hall who have played in the postseason all three of the previous seasons. All four were named captains by Coach Rizzotti during the preseason. Doherty returns as the leading scorer and rebounder from 2011-12 averaging 12.8 points-per-game and 6.6 rebounds-per-contest. She also enters 2012-13 as one of six players named to the America East Preseason All-Conference team. Overall, the Hawks lost less than one percent of their scoring from 2011-12 ---> 13 points from Keyokah Mars-Garrick. So far this season, the senior class has scored 237 of the team's 454 points (52 percent).

Welcome to Hartford: In addition to a strong returning core, the Hawks welcome five new faces to the court in red-shirt freshman Katie Roth, junior transfer Diamond Doe and true freshmen Mallory Shickora, Katelyn Skinner and Christie Michals. Roth and Michaels add options for Coach Rizzotti and the Hawks in the post, while Shickora, Skinner and Doe will all battle for minutes at the guard position. Roth enters 2012-13 with a leg up on her fellow newcomers having a chance to learn with the Hawks last season after undergoing preseason ankle

TALE OF THE TAPE

	Hartford	Vanderbilt
Record	6-1	6-3
Scoring Offense	64.9	69.4
Scoring Defense	55.6	60.0
Scoring Margin	+8.3	+9.4
FG %	.424	.429
FG % Defense	.398	.381
3FG %	.310	.333
3FG % Defense	.278	.277
3FG Made/Game	5.0	5.7
Free Throw %	.720	.716
Rebound Average	34.0	40.6
Opp. Rebound Avg.	34.7	32.9
Rebound Margin	-0.7	+7.7
TO Average	16.3	17.8
Opponent TO Avg.	20.9	16.0
Turnover Margin	+4.6	-1.8
Assists Average	14.3	15.8
Steals Average	10.4	6.8
Blocks Average	1.4	4.0

2012-13 HARTFORD LEADERS

Points

Nikkia Smith 11.0

Rebounds

Katie Roth 5.4

Assists

Alyssa Englert 3.9

Steals

Amber Bepko 2.7

Blocks

Katie Roth 0.6

Minutes

Amber Bepko 28.4

Field Goal Percentage

Christie Michals 60.0

3FG Percentage

Christie Michals 66.7

Free Throw Percentage

Alex Hall 1.000

Christie Michals 1.000

2012-13 HARTFORD NUMERICAL ROSTER

##	Name	Cl.	Pos.	Ht.	Hometown/High School
2	Daphne Elliott	G	Sr.	5-6	Fairfield, Conn./Fairfield Warde
4	Christie Michals	F	Fr.	6-1	Fairfax, Va./Robinson Secondary
5	Diamond Doe	G	Jr.	5-8	Lynn, Mass./Lynn Classical/Univ. of St. Joseph
10	Alex Hall	G	Sr.	5-7	Pembroke, N.H./Pembroke Academy
12	Katelyn Skinner	G	Fr.	5-10	Homer City, Pa./Homer Center
13	Taylor Clark	F	Jr.	6-0	Sayre, Pa./Athens Area
15	Milana Gilbert	F	Jr.	6-0	Smyrna, Del./Acad. of New Church
21	Shanise Bultron	G	So.	5-8	Watertown, Mass./Tabor Acad.
22	Katie Roth	F	R-Fr.	6-2	Castleton, N.Y./Maple Hill
23	Alyssa Englert	G	Jr.	5-9	Dansville, N.Y./Wayland-Cohocton
24	Ruthanne Doherty	F	Sr.	5-11	Richmond, Va./L.C. Bird
25	Amber Bepko	G	So.	5-9	Middletown, Conn./Mercy
31	Cherelle Moore	F	So.	6-0	Bridgeport, Conn./Kolbe Cathedral
33	Mallory Shickora	G	Fr.	5-8	Little Falls, N.J./Mount Saint Dominic Acad.
44	Nikkia Smith	F	Sr.	6-1	Montville, Conn./Montville

Head Coach: Jennifer Rizzotti (Connecticut '96) - 14th Season

Assistant Coach: Brian Mik (Southern Connecticut '94) - 13th Season

Assistant Coach: Bill Sullivan (Connecticut '95) - 13th Season

Assistant Coach: Ikea Witt (Hartford '07) - Sixth Season

Director of Basketball Operations: Cedric Quackenbush (Hartford '11) - Second Season

PRONUNCIATION

2 Daphne Elliott DAF knee

5 Diamond Doe DOUGH

21 Shanise Bultron sha NIECE

24 Ruthanne Doherty do WAH tee

32 Amber Bepko bep COE

33 Milana Gilbert MILL ah nah

BY CLASS

Freshman 3

Sophomore 4

Junior 4

Senior 4

BY POSITION

Forward 7

Guard 8

BY STATE

Connecticut 4

Delaware 1

Massachusetts 2

New Hampshire 1

New Jersey 1

New York 2

Pennsylvania 2

Virginia 2

HARTFORD WOMEN'S BASKETBALL

HAWKS RECORD WHEN...

Overall	
Overall	6-1
Home.....	4-1
Away.....	2-0
Neutral	0-0
Monthly Records	
November	5-1
December.....	1-0
January	0-0
February	0-0
March	0-0
Daily Records	
Monday	0-0
Tuesday.....	1-0
Wednesday.....	1-0
Thursday.....	0-0
Friday	2-0
Saturday	1-0
Sunday	1-1
Miscellaneous	
Hartford scores first.....	3-0
Opponent scores first.....	3-1
Leading at halftime.....	5-0
Trailing at halftime.....	0-1
Tied at halftime	1-0
Leading with 5 min. to play.....	5-0
Trailing with 5 min. to play.....	1-1
Tied with 5 min. to play	0-0
Games decided by 3 pts. or less	0-0
Games decided by 4-10 pts.	2-0
Games decided by 11-plus pts.....	4-1
Overtime	0-0
Score 60 points or fewer.....	1-1
Score 60-69 points	3-0
Score 70-79 points	2-0
Score 80-plus points	0-0
Allows 60 points or fewer.....	4-0
Allows 60-69 points.....	2-1
Allows 70-79 points.....	0-0
Allows 80-plus points.....	0-0
Shoot 50% or higher	1-0
Shoot between 40-49.9%.....	5-0
Shoot 39.9% or less.....	0-1
Shoot same or higher % than opp.....	5-0
Shoot lower % than opp	1-1
Opp. shoot 50% or higher	0-1
Opp. shoot between 40-49.9%.....	3-0
Opp. shoot 39.9% or less.....	3-0
Outrebounded opponent.....	3-0
Outrebounded by opponent.....	3-1
Rebounds are even	0-0
Has two players or less in double figures.....	3-0
Has three players in double figures	2-1
Has four players in double figures	1-0
Commit same or less TO than opp.	6-1
Commit more TO than opp.....	0-0
Games following a win.....	4-1
Games following a loss.....	1-0
Games vs. winning teams.....	2-1
Games vs. losing teams.....	3-0
Games vs. .500 teams.....	0-0
Makes more or same 3FGs than opp.....	4-1
Makes less 3FGs than opp	2-0
Makes more or same FTs than opp.....	5-0
Makes fewer FTs than opp	1-1

surgery. With the addition of Roth, the freshman class has provided 125 of the team's 454 points (28 percent).

Last Time Out: Freshman Christie Michals finished her first double digit performance with 13 points on 5-of-6 shooting, including a perfect 3-of-3 from beyond the arc, to lead all scorers in a 66-39 win over the Providence Friars. The win over Providence is the first over a team from the Big East since a November 2009 win over Louisville. The 39 points is also the lowest scored by a Hawks opponent since February of 2011 when they held Binghamton to 37 points. Joining Michals in leading Hartford was Amber Bepko, Alex Hall and Shanise Bultron who all finished with eight points. As a team, the Hawks finished the game shooting 44.0 percent (22-of-50). Eight of the 22 field goals came from beyond the three point arc, a season best for Hartford. Defensively, the Hawks held Providence to 26.9 percent overall (14-of-52), including just five field goals in the second half, while forcing the Friars into 16 turnovers. Hartford also won the battle of the boards with a 39-30 advantage, led by Ruthanne Doherty who finished with six rebounds. Bepko finished just behind her with five boards to go along with a team best three steals. Senior Daphne Elliott combined led Hartford with five assists.

Shooting Clinic: With good defense comes outstanding offense. The Hawks have forced their first six opponents to 146 total turnovers (20.9 per-game), with five of those opponents forced into 20 or more turnovers. In turn, the Hawks offense has been among the best it has in recent years, connecting on 42.4 percent from the field (162-382), including a season-high 51 percent against Marist, the best single game shooting performance since February 2010. The Hawks are also shooting 31 percent from beyond the three point arc (35-of-113).

LEAD-DEFICIT COMPARISON

	Largest Lead	Largest Deficit	Result
LOYOLA	29, 54-25	2, 0-2	W, 64-50
MARIST	12, 62-50	4, 31-35	W, 64-53
at Central Connecticut	14, 76-62	None	W, 76-62
RICHMOND	10, 30-20	6, 10-16	W, 59-54
at Massachusetts	14, 47-33	4, 11-15	W, 71-65
ST. JOHN'S	4, 36-32	14, 52-66	L, 54-66
PROVIDENCE	29, 64-35	None	W, 66-39
at Vanderbilt			
at Dartmouth			
QUINNIPIAC			
CONNECTICUT			
vs. UMES			
vs. Maryland/Brown			
at Binghamton			
BOSTON UNIVERSITY			
at Maine			
STONY BROOK			
UMBC			
at Albany			
NEW HAMPSHIRE			
at Vermont			
at Boston University			
BINGHAMTON			
at Stony Brook			
MAINE			
ALBANY			
at New Hampshire			
at UMBC			
VERMONT			

HARTFORD WOMEN'S BASKETBALL

The First Time: The Hawks 5-0 start to the season is the first time in the 36-year history of Hartford women's basketball that the team has won its first five games of the season. It is also just the second time an America East team has started 5-0 since the 1999-2000 season. Prior to this season, the Hawks had started 4-0 on three different occasions, the most recent in 2005-06. That season, Hartford finished the year 27-4 overall and went on to beat Temple for the first NCAA tournament victory in program history. Those first four victories came against Rhode Island, Loyola, UMass and Rider. The Hawks also started 4-0 in 2004-05 and in 1979-80.

Seventy Something: Under head coach Jennifer Rizzotti, the Hawks have relied heavily on their defense to win games. That has not always led to high scoring games for Hartford whose 76 points against CCSU is the most since February 2, 2010 when they defeated UMBC 85-45 in front of a home crowd. Last season, the Hawks scored 70 or more points just once against Harvard (72-61) and a year prior to that Hartford scored 70 or more in just two games. So far in 2012-13, the Hawks have scored 70 or more in two games - at CCSU (76) and at UMass (71).

Mid Major Top-25: For the third-straight season CollegelInsider.com will publish a weekly Mid-Major Top 25. In the most recent poll (Dec.4), the Hawks slipped one position and are now 10th receiving 482 votes (eight more than last week). In the Nov. 27 poll, the Hawks jumped 12 positions to their highest of the season, ninth. Other America East teams in this week's poll include Boston University (21st) and Albany (receiving votes). The Mid-Major Poll is made up of teams from the following conferences: America East, Atlantic Sun, Big Sky, Big South, Big West, Colonial, Great West, Horizon, Independents, Ivy, Metro Atlantic, Mid-American, Mid-Eastern, Missouri Valley, Northeast, Ohio Valley, Patriot, Southern, Southland, Southwestern, Summit, Sun Belt, West Coast.

Hays Knows Best: ESPN Columnist Graham Hays updated his Mid-Major Top-10 for the first time since the start of the 2012-13 season. In his most recent poll, Hays has Hartford listed ninth, ahead of Marist who Hartford beat 64-53. Unfortunately, the Hawks will not go head-to-head with any of the top-8 teams on Hays' poll, however wins against Providence and Vanderbilt in the next seven days will help the Hawks jump up in the next edition of Hays' Mid-Major Top 10. Dayton at 6-0 overall leads the poll released on November 28 followed by Middle Tennessee, Delaware, Gonzaga, UTEP, Green Bay, Chattanooga and Duquesne.

Honor Roll: Freshman Katie Roth wrapped up the Hawks first weekly accolade on Monday when she was named America East Rookie of the Week after averaging 9.5 points and 5.5 rebounds over two games last week. Roth opened the week with a career-high 17 points, tying the season-high for all Hawks, in the road victory at UMass. She started that game hitting her first six field goal attempts and closed out the contest 6-of-7 overall and 5-of-8 at the free throw line. In last Sunday's loss to St. John's Roth led the Hawks with seven rebounds.

Preseason Poll: In a census of league head coaches, the Hawks were picked to finish third overall following the regular season. Hartford, who received two first place votes, followed reigning champion Albany in first place and Boston University in second. The Great Danes garnered five of the nine possible first place votes. New Hampshire and Vermont finished in

HAWKS BY THE NUMBERS

Double-Figure Scoring Games

2012-13

	AE	Season	Career
Bepko	-	4	9
Bultron	-	-	1
Clark	-	-	1
Elliott	-	3	43
Doherty	-	3	44
Hall	-	1	21
Michals	-	1	1
Moore	-	-	2
Roth	-	1	1
Smith	-	5	30

20-Plus Points

	AE	Season	Career
Elliott	-	-	4
Doherty	-	-	1
Hall	-	-	3
Smith	-	-	2

10-Plus Rebounds

	AE	Season	Career
Doherty	-	-	15
Ellio	-	-	1
Gilbert	-	-	1
Hall	-	-	1

Five-Plus Assists

	AE	Season	Career
Bepko	-	-	1
Elliott	-	-	6
Englert	-	3	8
Hall	-	-	4
Smith	-	-	1

Five-Plus Steals

	AE	Season	Career
Bepko	-	-	2
Doherty	-	-	2
Elliott	-	-	1
Smith	-	-	1

Single-Game Point Leader

	AE	Season	Career
Bepko	-	2	3
Bultron	-	-	1
Elliott	-	1	16
Doherty	-	1	20
Hall	-	-	12
Michals	-	1	1
Roth	-	1	1
Smith	-	2	13

Single-Game Rebound Leader

	AE	Season	Career
Bepko	-	-	1
Elliott	-	-	11
Doherty	-	3	34
Gilbert	-	-	4
Hall	-	1	6
Moore	-	-	2
Roth	-	3	3
Smith	-	1	16

Double-Doubles

	AE	Season	Career
Doherty	-	-	12

Games Started

	Season	Career	Consecutive
Bepko	7	37	9
Bultron	-	2	-
Clark	-	20	-
Doherty	7	78	22
Elliott	7	68	7
Englert	7	14	7
Gilbert	-	1	-
Hall	-	68	-
Moore	-	1	-
Roth	7	7	7
Smith	-	51	-

HARTFORD WOMEN'S BASKETBALL

a tie for fourth place, followed by UMBC in sixth. Rounding out the poll was Maine (seventh), Binghamton (eighth) and Stony Brook (ninth).

Preseason All-Conference: Senior Ruthanne Doherty has already begun collecting honors in her senior campaign as she was one of six members of the 2012-13 America East Conference Preseason All-League squad. Doherty, who led the Hawks last season with a 12.8 points-per-contest average, joins two-time America East Player of the Year Chantell Alford (Boston University), Morgan Frame (New Hampshire), Mo Moran (Boston University), Julie Forster (Albany) and Ebone Henry (Albany) on the preseason team.

Next on Tap: The Hawks will play one more road game before returning to the friendly confines of the Chase Family Arena when they visit Dartmouth for the second-straight season. This year's match-up looks to build upon a string of seven straight victories for the Hawks. The last loss against Dartmouth came in December of 2004. Hartford and the Big Green are scheduled for a 2:00 p.m. tip-off on Sunday in Hanover, N.H.

The Hawks against the Southeastern Conference: All-time against current Southeastern Conference schools the Hawks are 0-4. The first of those meetings came against LSU in the Florida State Dial Soap Classic in 1992. The other three meetings have come in the tenure of head coach Jen Rizzotti, all in preseason match-ups. The first two came in back-to-back years, the initial of which was a second round NCAA loss to Georgia in 2006 after defeating Temple for the first NCAA Tournament win in program history. The second was a second round WNIT loss to South Carolina on the road after defeating Bucknell at home in the opening round. The most recent match-up against an SEC opponent came in the 2010 NCAA tournament against LSU at Duke. The Hawks lost that first-round game after earning the programs first ever at-large selection into the Big Dance.

HAWKS IN THE AE STATS (all-games)

TEAM STATS

Scoring Offense	1st (64.9)
Scoring Defense	4th (55.6)
Scoring Margin.....	1st (+9.3)
FG Percentage	1st (42.4)
FG Percentage Defense.....	5th (39.8)
3-pt FG Percentage	3rd (31.0)
3-pt FG Made Per Game	4th (5.0)
3-pt FG Percentage Defense.....	1st (27.8)
Free Throw Percentage	1st (72.0)
Rebounding Offense.....	9th (34.0)
Rebounding Defense.....	5th (34.7)
Rebounding Margin	6th (-0.7)
Blocked Shots.....	t-7th (1.4)
Assists	1st (14.3)
Steals.....	1st (10.4)
Turnover Margin.....	1st (+4.57)
Assist/TO Ratio.....	2nd (0.9)
Offensive Rebounds.....	t-5th (11.6)
Defensive Rebounds.....	9th (22.4)

INDIVIDUAL STATS (All games)

Points Per Game

t-8. Nikkia Smith (11.0)
13. Amber Bepko (10.4)
20. Ruthanne Doherty (8.9)

Rebounds Per Game

13. Katie Roth (5.4)
t-18. Nikkia Smith (4.8)
t-18. Ruthanne Doherty (4.8)

Assists Per Game

3. Alyssa Englert (3.9)

Blocked Shots Per Game

Steals Per Game

t-2. Amber Bepko (2.7)
7. Daphne Elliott (2.1)

FG Percentage

4. Nikkia Smith (.500)
10. Ruthanne Doherty (.458)

3FG Percentage

6. Amber Bepko (.371)

Free Throw Percentage

6. Nikkia Smith (73.1)
8. Daphne Elliott (70.8)

Assist-Turnover Ratio

3. Alyssa Englert (1.8)
5. Nikkia Smith (1.4)
6. Daphne Elliott (1.3)

GAME-BY-GAME STARTERS

Game	1	2	3	4	5
LOYOLA	Englert	Elliott	Bepko	Doherty	Roth
MARIST	Englert	Elliott	Bepko	Doherty	Roth
at Central Connecticut	Englert	Elliott	Bepko	Doherty	Roth
RICHMOND	Englert	Elliott	Bepko	Doherty	Roth
at Massachusetts	Englert	Elliott	Bepko	Doherty	Roth
ST. JOHN'S	Englert	Elliott	Bepko	Doherty	Roth
PROVIDENCE	Englert	Elliott	Bepko	Doherty	Roth
at Vanderbilt					
at Dartmouth					
QUINNIPIAC					
CONNECTICUT					
vs. UMES					
vs. Maryland/Brown					
at Binghamton					
BOSTON UNIVERSITY					
at Maine					
STONY BROOK					
UMBC					
at Albany					
NEW HAMPSHIRE					
at Vermont					
at Boston University					
BINGHAMTON					
at Stony Brook					
MAINE					
ALBANY					
at New Hampshire					
at UMBC					
VERMONT					

(1-Point Guard, 2-Guard, 3-Guard, 4-Forward, 5-Forward)

HARTFORD WOMEN'S BASKETBALL

Rizzotti HOF: Head coach Jennifer Rizzotti will be one of the newest Hall of Famers among the Division I coaches ranks when she is inducted into the Women's Basketball Hall of Fame in June. Rizzotti is one of six inductees announced during the WNBA's All-Star game. Hartford's 14th year head coach will enter the Hall of Fame as a player following a successful career on the court with the Connecticut Huskies, the New England Blizzard, the Houston Comets and the Cleveland Rockers. Fellow inductees in the Class of 2013 include noteworthy Division I head coach Gary Blair (Texas A&M) and Jim Foster (Ohio State). She is also joined by three other former players Peffie Gillom-Granderson, Annette Knight-Smith and Sue Wicks.

Staring Down the 1,000 Point Club: A pair of Hawks enter 2012-13 on the 1,000 point watch, seniors Ruthanne Doherty and Daphne Elliott. Doherty, who broke the 500 rebound mark as a junior, enters tonight's game against Vanderbilt searching for 127 points while Elliott needs 153 points to break the millennium plateau. Doherty and Elliott would be the 13th and 14th members of the 1,000 point club. The most recent addition was 2010 graduate Diana Delva who set the mark in her senior campaign.

In the Record Books: Sophomore Amber Bepko wrote herself into the Hartford Hawks record books in her first season of collegiate basketball when she grabbed eight steals in back-to-back games. The first was a home win over New Hampshire

AMERICA EAST WEEKLY HONORS

PLAYER OF THE WEEK

ROOKIE OF THE WEEK

Katie Roth (Nov. 26)

2012-13 TEAM STATISTICS

TEAM STATISTICS	All Games	Home	Away	Neutral	Non-Conf.	Conf. Games
RECORD	6-1	4-1	2-0	--	6-1	--
SCORING	454	307	147	--	454	--
Points per game	64.9	61.4	73.5	--	64.9	--
Scoring margin	+9.3	+9.0	+10.0	--	+9.3	--
FIELD GOALS-ATT	162-382	116-271	46-111	--	162-383	--
Field goal pct	.424	.428	.414	--	.424	--
3 POINT FG-ATT	35-113	28-85	7-28	--	35-113	--
3-point FG pct	.310	.329	.250	--	.310	--
3-pt FG made per game	5.0	5.6	3.5	--	5.0	--
FREE THROWS-ATT	95-132	47-70	48-62	--	95-132	--
Free throw pct	.720	.671	.774	--	.720	--
REBOUNDS	238	166	72	--	238	--
Rebounds per game	34.0	33.2	36.0	--	34.0	--
Rebounding margin	-0.7	-2.0	+2.5	--	-0.7	--
ASSISTS	100	71	29	--	100	--
Assists per game	14.3	14.2	14.5	--	14.3	--
TURNOVERS	114	77	37	--	114	--
Turnovers per game	16.3	15.4	18.5	--	16.3	--
Turnover margin	+4.6	+4.6	4.5	--	+4.6	--
Assist/turnover ratio	0.9	0.9	0.8	--	0.9	--
STEALS	73	50	23	--	73	--
Steals per game	10.4	10.0	11.4	--	10.4	--
BLOCKS	10	6	4	--	10	--
Blocks per game	1.4	1.2	2.0	--	1.4	--

SCORING BREAKDOWN (HARTFORD/OPPONENT)

Game	Pts in		2nd ch.	1st		2nd	OT	FT	Starters	Bench
	W/L	Paint		Pts.	Half Pts.					
LOYOLA	W	30/20	33/22	7/12	36/22	28/28	--	9/10	45/21	19/29
MARIST	W	28/28	17/12	7/10	28/28	36/25	--	7/5	37/38	27/19
at Central Conn.	W	24/36	25/17	15/14	34/30	42/32	--	23/13	47/42	29/20
RICHMOND	W	28/26	18/7	8/5	30/23	29/31	--	7/7	44/43	15/11
at Massachusetts	W	20/34	26/23	10/15	37/26	34/39	--	25/10	46/57	25/8
ST. JOHN'S	L	22/26	11/9	6/8	24/26	30/40	--	10/14	33/54	21/12
PROVIDENCE	W	22/20	17/6	5/6	34/21	32/18	--	14/11	23/30	43/9
at Vanderbilt										
at Dartmouth										
QUINNIPIAC										
CONNECTICUT										
vs. UMES										
vs. Maryland/Brown										
at Binghamton										
BOSTON UNIV.										
at Maine										
STONY BROOK										
UMBC										
at Albany										
NEW HAMPSHIRE										
at Vermont										
at Boston Univ.										
BINGHAMTON										
at Stony Brook										
MAINE										
ALBANY										
at New Hampshire										
at UMBC										
VERMONT										

CLASS SCORING BREAKDOWN

	Fr.	So.	Jr.	Sr.
LOYOLA	7	16	8	33
MARIST	11	7	8	38
at Central Conn.	10	17	4	45
RICHMOND	6	19	2	32
at UMass	17	10	11	33
ST. JOHN'S	2	14	3	35
PROVIDENCE	24	16	5	21
at Vanderbilt				
at Dartmouth				
QUINNIPIAC				
UCONN				
vs. UMES				
vs. Maryland/Brown				
at Binghamton				
BOSTON UNIV.				
at Maine				
STONY BROOK				
UMBC				
at Albany				
NEW HAMPSHIRE				
at Vermont				
at Boston Univ.				
BINGHAMTON				
at Stony Brook				
MAINE				
ALBANY				
at New Hampshire				
at UMBC				
VERMONT				
TOTAL	77	99	41	237

HARTFORD WOMEN'S BASKETBALL

(2/1) and the second a road win at Vermont (2/5). Bepko is tied with Lana Thomas (1990-93) and Candace Ward (1991-96) who each finished with eight steals on two different occasions. Bepko, however, is the first of the three to grab eight steals as a freshman.

Moving up the Ranks: Senior Daphne Elliott continues her ascent in two career record categories. The junior from Fairfield, Conn. will continue to climb quickly in both lists - three pointers made and steals. Entering tonight's game, Elliott has made 128 career three pointers and is currently tied for second all-time behind MaryLynne Schaefer who finished her four years with 222. In the steals line, Elliott has 168 swipes and with six more will jump to fourth all-time.

Three Point Drought: For the first time in 112 straight games, the Hawks were held without a three point bucket in a loss to Vermont on January 7, 2012. In that (112 game) stretch the Hawks scored 598 three pointers. The streak spanned two-plus seasons dating back to the second round NCAA Tournament loss to Texas A&M in 2008. Defensively, the most recent game the Hawks held their opponent without a three point bucket was against Maine (0-of-2) on January 19, 2012. Since going without a three pointer against the Catamounts, the Hawks have now gone 22-straight games with at least one three pointer, hitting 102 total (4.6 per-game).

Game 8: Since Coach Rizzotti took over the team for the 1999-2000 season the Hawks are 5-8 overall in the eighth game of the season. Since turning Division I, the Hawks are 12-16 in game eight of the season. Last year's eighth game was a 70-45 road loss at St. John's. The most recent victory in the eighth game of the season was a 60-43 win over Brigham Young at home during the 2006-07 season. BYU was ranked #23/22 entering that contest.

Rizzotti Milestone: Hawks head coach Jennifer Rizzotti, in her 14th season, reached another coaching milestone last season winning her 250th career game on February 1 (vs. New Hampshire, 64-46). Next on the list for Coach Rizzotti is number 275. She currently needs 14 wins to set the newest mark.

Rizzotti's Milestone Victories

First Victory: 57-54 vs. Sacred Heart (Nov. 20, 1999)

50th Victory: 58-55 at Binghamton (Feb. 5, 2003)

100th Victory: 65-54 at Seton Hall (Dec. 29, 2005)

200th Victory: 51-44 vs. Coppin State (Dec. 21, 2009)

250th Victory: 64-46 vs. New Hampshire (Feb. 1, 2012)

Rizzotti's Coaching Tree: Coach Rizzotti has mentored a number of players since starting her coaching career at the University of Hartford. Nothing makes a head coach happier than seeing a number of her players on the sidelines pursuing a career in a sport the love. The number of former Hawks who are now among the collegiate coaching ranks continues to grow each year. The most recent graduate to land a coaching position is 2012 post Keyokah Mars-Garrick who accepted a position as an assistant coach at the Coast Guard Academy. Liz Stich, a 2005 graduate, is the first of the group to take a head coaching position, leading the Plymouth State Panthers for her first season in 2012-13. Other players who are among the coaching ranks are Danielle Wexler (Class of 2006) in her third season at Quinnipiac, Lisa Etienne (class of 2009) in her second season at Colgate, Jackie Smith (class of 2011) in her second season at Stonehill and MaryLynne Schaefer

AROUND THE AMERICA EAST...



2012-13 AMERICA EAST STANDINGS

(as of 12/4/12)

	AMERICA EAST			OVERALL		
	W	L	PCT	W	L	PCT
Hartford	0	0	.000	6	1	.857
Albany	0	0	.000	5	2	.714
Boston University	0	0	.000	5	3	.625
Stony Brook	0	0	.000	3	3	.500
New Hampshire	0	0	.000	3	4	.429
UMBC	0	0	.000	3	5	.375
Vermont	0	0	.000	3	6	.333
Maine	0	0	.000	1	6	.143
Binghamton	0	0	.000	0	8	.000

UPCOMING GAMES

THURSDAY, DECEMBER 6:

Hartford at Vanderbilt, 7:00 p.m.

FRIDAY, DECEMBER 7:

Hampton at UMBC, 7:00 p.m.

SATURDAY, DECEMBER 8:

Rhode Island at Maine, 1:00 p.m.

Stony Brook at Fordham, 2:00 p.m.

Albany at Canisius, 2:00 p.m.

Binghamton at Buffalo, 5:00 p.m.

Boston University at Marist, 7:00 p.m.

SUNDAY, DECEMBER 9:

Hartford at Dartmouth, 2:00 p.m.

Central Connecticut at New Hampshire, 2:00 p.m.

RECENT RESULTS

SUNDAY, DECEMBER 2:

Brown 50, New Hampshire 43

Princeton 93, UMBC 46

UNLV 58, Binghamton 56

SATURDAY, DECEMBER 1:

Albany 65, Siena 48

Florida Gulf Coast 79, Maine 49

Quinnipiac 60, New Hampshire 53

Drexel 66, Vermont 49

Arizona 60, Binghamton 35

Hartford 66, Providence 39

Boston University 66, St. John's 49

FRIDAY, NOVEMBER 30:

Youngstown State 76, Stony Brook 43

Vermont 59, Houston Baptist 48

HARTFORD WOMEN'S BASKETBALL

(class of 2009) in her second season at Miami.

Home Court Advantage: The Hartford women's basketball team has turned the University of Hartford's Chase Family Arena into one of the toughest places to play for visiting opponents. Over the last five years, the Hawks have amassed a home court record of 63-15 (.808), while they are 33-7 (.825) overall in regular season conference games. Last season, the Hawks finished the year with an 11-5 overall record on its home floor, the second-straight season with five home losses. The most success came in a four season span (2004-05 thru 2007-08) where the Hawks lost just two games on their home floor. The Hawks success at home has made it very hard to schedule home non-conference games as some of those home victories over the last several years have come over ranked opponents like Michigan State, Louisville and BYU.

PROTECT THIS HOUSE

Year	Overall Record	Home Record	Conf. Home Record
2012-13	6-1	4-1	--
2011-12	19-13	11-5	5-3
2010-11	17-16	9-5	5-3
2009-10	27-5	16-1	8-0
2008-09	20-12	11-4	7-1
5 YR TOTAL	89-47	51-16	25-7
2007-08	28-6	15-0	8-0
2006-07	25-9	12-1	8-0
2005-06	27-4	14-0	8-0
2004-05	22-9	15-1	8-1
2003-04	18-12	10-5	5-4
2002-03	7-21	4-9	3-6
2001-02	16-15	10-4	5-3
2000-01	15-14	9-3	7-2
1999-00	14-14	7-5	5-4
1998-99	8-19	3-10	2-7
1997-98	11-16	6-5	6-3
1996-97	15-12	9-4	6-3
1995-96	15-13	9-5	6-3
1994-95	7-20	4-10	1-7
1993-94	9-18	5-6	1-6
1992-93	11-16	7-6	4-3
1991-92	9-19	4-7	1-6
1990-91	11-18	6-8	3-2
1989-90	4-22	3-8	2-4
1988-89	4-19	2-5	2-2
1987-88	9-18	6-9	5-3
1986-87	7-18	6-5	2-4
1985-86	3-23	2-11	1-5
1984-85	6-18	4-4	N/A
TOTAL	390-421	220-148	123-84

2012-13 SEASON SUPERLATIVES

	HARTFORD HIGH	HARTFORD LOW	OPP. HIGH	OPP. LOW
TOTAL POINTS	76, at CCSU (11.16.12)	54, vs. St. John's (11.25.12)	66, vs. St. John's (11.25.12)	39, vs. Providence (12.1.12)
FIRST HALF POINTS	37, at UMass (11.21.12)	24, vs. St. John's (11.25.12)	30, at CCSU (11.16.12)	21, vs. Providence (12.1.12)
SECOND HALF POINTS	42, at CCSU (11.16.12)	28, vs. Loyola (11.9.12)	40, vs. St. John's (11.25.12)	18, vs. Providence (12.1.12)
MARGIN OF VICTORY	27, vs. Providence (12.1.12)	5, vs. Richmond (11.18.12)	12, vs. St. John's (11.25.12)	--
FIELD GOALS MADE	26, 2x last vs. Marist (11.13.12)	20, vs. St. John's (11.25.12)	25, 2x last vs. St. John's (11.25.12)	14, vs. Providence (12.1.12)
FIELD GOALS ATTEMPTED	62, vs. St. John's (11.25.12)	50, vs. Providence (12.1.12)	58, vs. Marist (11.13.12)	49, vs. Loyola (11.9.12)
FIELD GOAL %	51.0 (26-51), vs. Marist (11.13.12)	32.3 (20-62), vs. St. John's (11.25.12)	50.0 (25-50), vs. St. John's (11.25.12)	26.9 (14-52), vs. Providence (12.1.12)
3 PT FG MADE	8, vs. Providence (12.1.12)	2, at UMass (11.21.12)	6, vs. Marist (11.13.12)	0, vs. Providence (12.1.12)
3 PT FG ATTEMPTS	20, vs. Providence (12.1.12)	12, at UMass (11.21.12)	24, vs. Marist (11.13.12)	3, vs. Providence (12.1.12)
3 PT FG %	40.0 (8-20), vs. Providence (12.1.12)	22.2 (4-18), vs. St. John's (11.25.12)	38.5 (5-13), 2x last at UMass (11.21.12)	0.0 (0-3), vs. Providence (12.1.12)
FT MADE	25, at UMass (11.21.12)	7, 2x last vs. Richmond (11.18.12)	14, vs. St. John's (11.25.12)	5, vs. Marist (11.13.12)
FT ATTEMPTS	35, at UMass (11.21.12)	10, vs. Marist (11.13.12)	17, vs. St. John's (11.25.12)	8, vs. Marist (11.13.12)
FT %	85.2 (23-27), at CCSU (11.16.12)	43.8 (7-16), vs. Richmond (11.18.12)	82.4 (14-17), vs. St. John's (11.25.12)	62.5 (5-8), 2x last vs. Marist (11.13.12)
REBOUNDS	39, vs. Providence (12.1.12)	31, 2x last vs. Richmond (11.18.12)	39, vs. St. John's (11.25.12)	30, vs. Providence (12.1.12)
ASSISTS	16, (2x) last vs. Providence (12.1.12)	12, vs. St. John's (11.25.12)	16, at UMass (11.21.12)	5, vs. Loyola (11.9.12)
STEALS	15, vs. Loyola (11.9.12)	6, vs. St. John's (11.25.12)	13, vs. Loyola (11.9.12)	2, vs. Richmond (11.18.12)
BLOCKED SHOTS	2, 4x last at UMass (11.21.12)	0, vs. St. John's (11.25.12)	7, vs. St. John's (11.25.12)	1, at CCSU (11.16.12)
TURNOVERS	21, vs. Loyola (11.9.12)	12, 2x last vs. St. John's (11.25.12)	28, vs. Loyola (11.9.12)	16, (2x) last vs. Providence

HARTFORD WOMEN'S BASKETBALL

How many times a Hawk ...

Scored 20 or more Points

N/A

Scored 15 or more Points

17 Katie Roth at UMass (11.21.12)
 17 Nikkia Smith at CCSU (11.16.12)
 17 Amber Bepko at CCSU (11.16.12)
 16 Nikkia Smith vs. St. John's (11.25.12)
 16 Amber Bepko vs. Richmond (11.18.12)

Grabbed 15 or more Rebounds

N/A

Grabbed 10 or more Rebounds

N/A

Dished out 10 or more Assists

N/A

Dished out 5 or more Assists

6 Alyssa Englert vs. Marist (11.9.12)
 6 Alyssa Englert vs. Richmond (11.18.12)
 5 Daphne Elliott vs. Providence (12.1.12)

Recorded 5 or more Steals

N/A

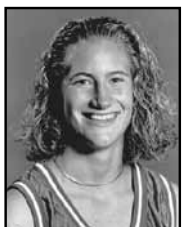
Blocked 3 or more Shots

N/A

2012-13 INDIVIDUAL SUPERLATIVES

Points:	17, Nikkia Smith at CCSU 11.16.12
	17, Amber Bepko at CCSU 11.16.12
	17, Katie Roth at UMass 11.21.12
Rebounds:	9, Katie Roth vs. Richmond 11.18.12
Offensive Rebounds:	5, Ruthanne Doherty at CCSU 11.16.12
Defensive Rebounds:	7, Ruthanne Doherty vs. Marist 11.13.12
	7, Katie Roth vs. St. John's 11.25.12
Field Goals Made:	6, Ruthanne Doherty vs. Marist 11.13.12
	6, Ruthanne Doherty at CCSU 11.16.12
	6, Katie Roth at UMass 11.21.12
	6, Nikkia Smith vs. St. John's 11.25.12
Field Goals Attempted:	12, Nikkia Smith vs. St. John's 11.25.12
Field Goal % (min. 5 made):	85.7 (6-7), Katie Roth at UMass 11.21.12
Three Pointers Made:	4, Amber Bepko vs. Richmond 11.18.12
Three Pointers Attempted:	7, Amber Bepko vs. Richmond 11.18.12
3 Point % (min. 2 Made):	100.0 (2-2), Shanise Bultron vs. Marist 11.13.12
	100.0 (3-3), Christie Michals 12.1.12
Free Throws Made:	8, Amber Bepko at UMass 11.21.12
Free Throws Attempted:	9, Amber Bepko at UMass 11.21.12
Free Throw Percentage (min. 5 made):	88.9 (8-9), Amber Bepko 11.21.12
Assists:	6, Alyssa Englert vs. Loyola 11.9.12
	6, Alyssa Englert vs. Richmond 11.18.12
Steals:	4, Daphne Elliott vs. Loyola 11.9.12
	4, Amber Bepko vs. Marist 11.13.12
	4, Amber Bepko at UMass 11.21.12
Blocks:	2, Nikkia Smith vs. Marist 11.9.12
	2, Katie Roth at UMass 11.21.12

HARTFORD WOMEN'S BASKETBALL



1,780

HEATHER WEINDORFER



1,679

DANIELLE HOOD



1,403

DIANA DELVA



1,374

PAULINE FRISINA



1,298

ERICA BEVERLY



1,297

IKEA WITT



1,267

CANDACE WARD

1,000 POINT CLUB

	G	FGM-FGA	PCT	3ptFGM-FGA	PCT	FTM-FTA	PCT	REB	AVG	TP	AVG
1. Heather Weindorfer											
1993-94	27	110-226	.487	0-0	.000	130-183	.710	187	6.9	350	13.0
1994-95	27	143-317	.451	0-2	.000	161-268	.601	204	7.6	447	16.6
1995-96	28	177-355	.499	0-0	.000	145-205	.707	205	7.3	499	13.5
1996-97	27	176-343	.513	0-0	.000	132-203	.650	259	9.6	484	17.9
TOTALS	109	546-1241	.440	0-2	.000	568-859	.661	855	7.8	1,780	16.3
2. Danielle Hood											
2004-05	29	91-223	.435	0-0	.000	73-113	.646	132	4.6	267	9.2
2005-06	31	180-329	.547	0-0	.000	71-116	.612	142	4.6	431	13.9
2006-07	34	183-388	.472	0-1	.000	81-121	.669	147	4.3	447	13.1
2008-08	34	207-418	.495	2-5	.400	118-156	.756	151	4.4	534	15.7
TOTALS	128	667-1358	.491	2-6	.333	343-506	.678	572	4.5	1,679	13.1
3. Diana Delva											
2006-07	34	83-143	.580	0-0	.000	82-117	.701	234	6.9	248	7.3
2007-08	34	126-208	.606	0-0	.000	66-102	.647	231	6.8	318	9.4
2008-09	32	152-253	.601	4-9	.444	67-95	.705	206	6.4	375	11.7
2009-10	32	178-275	.647	0-6	.000	106-141	.752	259	8.1	462	14.4
TOTALS	132	539-879	.613	4-15	.267	321-455	.705	930	7.0	1,403	10.6
4. Pauline Frisina											
1985-86	25	157-328	.479	N/A	N/A	17-21	.810	58	2.3	331	13.2
1986-87	25	172-385	.447	N/A	N/A	28-35	.800	85	3.4	372	14.9
1987-88	26	157-383	.410	15-51	.294	28-38	.737	60	2.3	357	13.7
1988-89	21	126-307	.410	25-61	.410	37-45	.802	54	2.6	314	15.0
TOTALS	97	612-1403	.436	40-112	.357	110-139	.791	257	2.6	1,374	14.2
5. Erica Beverly											
2005-06	31	124-225	.551	0-0	.000	68-121	.562	271	8.7	316	10.2
2006-07	8	26-45	.578	0-0	.000	7-9	.778	47	5.9	59	7.4
2007-08	34	105-206	.510	0-0	.000	82-116	.707	249	7.3	292	8.6
2008-09	32	127-255	.498	1-2	.500	101-145	.697	231	7.2	356	11.1
2009-10	30	94-216	.435	0-4	.000	87-122	.713	208	6.9	275	9.2
TOTALS	135	476-947	.503	1-6	.167	345-513	.673	1,006	7.5	1,298	9.6
6. Ikea Witt											
2003-04	29	101-225	.449	1-9	.111	95-117	.812	132	4.6	298	10.3
2004-05	31	132-288	.458	4-19	.211	68-92	.739	114	3.7	336	10.8
2005-06	31	104-216	.481	1-12	.083	81-99	.818	96	3.1	290	9.4
2006-07	34	152-311	.489	0-1	.000	69-94	.734	152	4.5	373	11.0
TOTALS	125	489-1040	.470	6-14	.146	313-402	.779	494	4.0	1,297	10.4
7. Candace Ward											
1991-92	28	47-137	.343	0-3	.000	0-3	.000	115	4.1	134	4.8
1992-93	27	82-172	.477	8-17	.471	62-81	.765	81	3.0	234	8.7
1993-94	27	165-406	.406	30-102	.294	93-127	.732	164	6.1	453	16.8
1994-95	3	17-30	.567	2-3	.667	11-14	.786	10	3.3	47	15.7
1995-96	28	143-348	.411	25-91	.275	88-122	.721	149	5.3	399	14.3
TOTALS	113	454-1093	.415	65-216	.301	254-347	.732	519	4.6	1,267	11.2
8. Janeka Lopp											
1998-99	26	96-227	.423	5-15	.333	27-36	.750	90	3.5	224	8.6
1999-00	27	121-268	.451	1-10	.100	40-56	.714	96	3.6	283	10.5
2000-01	27	139-339	.410	25-69	.362	68-104	.654	135	5.0	371	13.7
2001-02	27	123-344	.358	38-114	.333	60-79	.759	90	3.3	344	12.7
TOTALS	107	479-1178	.407	69-208	.332	195-275	.709	411	3.8	1,222	11.4
9. Mary-Jane Besselink											
1989-90	22	73-188	.388	0-0	.000	50-77	.649	189	8.6	196	8.9
1990-91	29	146-309	.473	0-0	.000	46-66	.697	235	8.1	338	11.7
1991-92	28	123-292	.421	0-0	.000	43-70	.614	203	7.3	289	10.3
1992-93	27	170-332	.512	0-0	.000	42-62	.677	190	7.0	382	14.2
TOTALS	106	512-1121	.456	0-0	.000	181-275	.658	817	7.7	1,205	11.4
10. Karen Ringland											
1984-85	24	123-270	.456	N/A	N/A	60-107	.561	193	8.0	306	12.8
1985-86	22	104-187	.556	N/A	N/A	43-80	.538	177	8.0	251	11.4
1986-87	25	152-249	.610	N/A	N/A	77-115	.670	173	6.9	381	15.2
1987-88	23	105-204	.515	0-1	.000	46-74	.622	144	6.3	256	11.1
TOTALS	94	484-910	.532	0-1	.000	226-376	.601	687	7.3	1,194	12.7
11. Erika Messam											
2002-03	25	84-194	.433	12-41	.293	47-63	.746	87	3.5	227	9.1
2003-04	29	109-261	.418	13-32	.406	86-114	.754	102	3.5	317	10.9
2004-05	26	106-256	.414	19-62	.306	59-70	.843	76	2.9	290	11.2
2005-06	31	121-305	.397	29-99	.293	55-77	.714	88	2.8	326	10.5
TOTALS	111	420-1016	.413	73-234	.312	247-324	.762	353	3.2	1,160	10.5
12. Kenitra Johnson											
1998-99	27	67-108	.620	0-0	.000	25-48	.521	118	4.4	159	5.9
1999-00	28	91-199	.457	0-0	.000	47-83	.566	219	7.8	229	8.2
2000-01	29	136-251	.542	0-0	.000	60-96	.625	216	7.4	332	11.4
2001-02	30	145-270	.537	0-1	.000	86-124	.694	239	8.0	376	12.5
TOTALS	114	439-828	.530	0-1	.000	218-351	.621	792	6.9	1,096	9.6



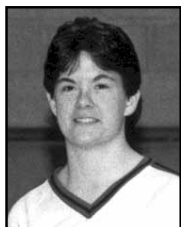
1,222

JANEKA LOPP



1,205

MARY-JANE BESSELINK



1,194

KAREN RINGLAND



1,160

ERIKS MESSAM



1,096

KENITRA JOHNSON

HARTFORD WOMEN'S BASKETBALL

INDIVIDUAL CAREER RECORDS

TOTAL POINTS

1,780	Heather Weindorfer (1993-97)
1,679	Danielle Hood (2004-08)
1,403	Diana Delva (2006-2010)
1,374	Pauline Frisina (1985-89)
1,298	Erica Beverly (2005-10)
1,297	Ikea Witt (2003-07)
1,267	Candace Ward (1991-96)
1,222	Janeka Lopp (1998-02)
1,205	Mary-Jane Besselink (1989-93)
1,194	Karen Ringland (1984-88)

SCORING AVERAGE

16.3	Heather Weindorfer (1993-97)
15.0	Laurie Weinstein (1975-78)
14.2	Pauline Frisina (1985-89)
13.3	Karen Groah (1975-79)
13.1	Danielle Hood (2004-08)
12.7	Karen Ringland (1984-88)
12.3	Lana Thomas (1990-93)
12.3	Kim Seaborn (1979-82)
12.3	Karen Waite (1975-77)
11.4	Mary-Jane Besselink (1989-93)
11.4	Janeka Lopp (1998-02)

FIELD GOALS MADE

667	Danielle Hood (2004-08)
612	Pauline Frisina (1985-89)
606	Heather Weindorfer (1993-97)
539	Diana Delva (2006-2010)
512	Mary-Jane Besselink (1989-93)
489	Ikea Witt (2003-07)
484	Karen Ringland (1984-88)
479	Janeka Lopp (1998-02)
476	Erica Beverly (2005-10)
454	Candace Ward (1991-96)

FIELD GOALS ATTEMPTED

1,403	Pauline Frisina (1985-89)
1,358	Danielle Hood (2004-08)
1,241	Heather Weindorfer (1993-97)
1,178	Janeka Lopp (1998-02)
1,121	Mary-Jane Besselink (1989-93)
1,093	Candace Ward (1991-96)
1,053	Kelly Penwell (1990-94)
1,040	Ikea Witt (2003-07)
1,016	Erika Messam (2002-06)
962	Wendy Davies (1983-87)

FIELD GOAL PERCENTAGE (min. 100 made)

.613	Diana Delva (2006-10)
.532	Karen Ringland (1984-88)
.530	Kenitra Johnson (1998-02)
.518	Kelly Ann Charles (1997-02)
.510	Laurie Weinstein (1975-78)
.503	Erica Beverly (2005-10)
.491	Danielle Hood (2004-08)
.488	Heather Weindorfer (1993-97)
.470	Ikea Witt (2003-07)
.469	Lana Thomas (1990-93)

THREE PT. FIELD GOALS MADE

222	MaryLynne Schaefer (2005-09)
128	Daphne Elliott (2009-pres.)
127	Dorcas Miller (1999-03)
125	Danielle Wexler (2002-06)
122	Mary Silvia (2007-11)
110	Bridget Murray (2000-04)
107	Jackie Smith (2007-11)
83	Tracy Stolle (1995-99)
73	Erika Messam (2002-06)
71	Ilicia Mathis (2008-2011)
71	Liz Stich (2001-05)

THREE PT. FIELD GOALS ATTEMPTED

687	MaryLynne Schaefer (2005-09)
416	Daphne Elliott (2009-pres.)
386	Danielle Wexler (2002-06)
377	Dorcas Miller (1999-03)
345	Mary Silvia (2007-11)
338	Jackie Smith (2007-11)
301	Tracy Stolle (1995-99)
294	Bridget Murray (2000-04)
254	Liz Stich (2001-05)
240	Jamie McCabe (2004-08)

THREE PT. FIELD GOAL PERCENTAGE (min. 50 made)

.374	Bridget Murray (2000-04)
.372	Betsy Andersen (1987-91)
.354	Mary Silvia (2007-11)
.349	Eryn Ivnik (1994-98)
.339	Anne Whalen (2000-04)
.337	Dorcas Miller (1999-03)
.332	Janeka Lopp (1998-02)
.324	Michelle Gronbeck (1994-98)
.324	Danielle Wexler (2002-06)
.323	MaryLynne Schaefer (2005-09)

FREE THROWS MADE

568	Heather Weindorfer (1993-97)
345	Erica Beverly (2005-10)
343	Danielle Hood (2004-08)
321	Diana Delva (2006-10)
313	Ikea Witt (2003-07)
294	Candace Ward (1991-96)
247	Erika Messam (2002-06)
242	Shawna Murphy (1994-98)
233	Sue Tremblay (1984-88)
226	Karen Ringland (1984-88)

FREE THROWS ATTEMPTED

859	Heather Weindorfer (1993-97)
513	Erica Beverly (2005-10)
506	Danielle Hood (2004-08)
455	Diana Delva (2006-10)
402	Ikea Witt (2003-07)
400	Candace Ward (1991-96)
385	Sue Tremblay (1984-88)
376	Karen Ringland (1984-88)
351	Kenitra Johnson (1998-02)
324	Erika Messam (2002-06)

FREE THROW PERCENTAGE (min. 100 made)

.856	MaryLynne Schaefer (2005-09)
.815	Jackie Smith (2007-11)
.791	Pauline Frisina (1985-89)
.783	Lorraine Grogan (1991-95)
.779	Ikea Witt (2003-07)
.771	Kelly Penwell (1990-94)
.771	Shawna Murphy (1994-98)
.766	Maureen DiJulia (1995-99)
.762	Erika Messam (2002-06)
.742	Tracy Stolle (1995-99)

REBOUNDS

1,006	Erica Beverly (2005-10)
930	Diana Delva (2006-10)
855	Heather Weindorfer (1993-97)
817	Mary-Jane Besselink (1989-93)
792	Kenitra Johnson (1998-02)
687	Karen Ringland (1984-87)
629	Wendy Davies (1983-87)
604	Paula Whittier (1981-85)
582	Eryn Ivnik (1994-98)
580	Betsy Andersen (1987-91)

REBOUNDING AVERAGE (min.50 games)

9.9	Karen Groah (1975-79)
7.8	Heather Weindorfer (1993-97)
7.7	Mary-Jane Besselink (1989-93)
7.5	Erica Beverly (2005-10)
7.3	Karen Ringland (1984-88)
7.0	Diana Delva (2006-10)
6.9	Kathy Burke (1979-83)
6.9	Kenitra Johnson (1998-02)
6.6	Paula Whittier (1981-85)
6.5	Lana Thomas (1990-93)

ASSISTS

605	Maureen DiJulia (1995-99)
430	Trish Slocum (1985-90)
354	Candace Ward (1991-96)
346	Erika Messam (2002-06)
300	Maura Rodgers (1989-93)
294	Angie Pezzetta (1999-03)
292	Jackie Smith (2007-11)
289	Lisa Etienne (2006-09)
272	Lisa Smith (1988-92)
261	Lorraine Grogan (1991-95)

STEALS

241	Candace Ward (1991-96)
203	Maureen DiJulia (1995-99)
190	Erika Messam (2002-06)
174	Lana Thomas (1990-93)
172	Pauline Frisina (1985-89)
171	Trish Slocum (1985-90)
168	Daphne Elliott (2009-pres.)
159	Erica Beverly (2005-10)
157	Lisa Etienne (2006-09)
149	Lisa Smith (1988-92)

BLOCKED SHOTS

196	Erica Beverly (2005-10)
167	Diana Delva (2006-10)
114	Kenitra Johnson (1998-02)
82	Wendy Davies (1983-87)
80	Tiffany Rutledge (1996-00)
69	Candace Ward (1991-96)
65	Mary-Jane Besselink (1989-93)
61	Danielle Hood (2004-08)
57	Tanika Price (2001-05)
57	Karen Ringland (1984-88)

GAMES PLAYED

135	Erica Beverly (2005-10)
132	Diana Delva (2006-10)
131	MaryLynne Schaefer (2005-09)
128	Courtney Gomez (2004-08)
128	Danielle Hood (2004-08)
125	Ikea Witt (2003-07)
123	Katie Kelley (2005-09)
122	Jackie Smith (2007-11)
118	Mary Silvia (2007-11)
115	Danielle Wexler (2002-06)

GAMES STARTED

121	Erica Beverly (2005-10)
107	Heather Weindorfer (1993-97)
106	Erika Messam (2002-06)
105	Maureen DiJulia (1995-99)
102	Danielle Hood (2004-08)
100	Mary-Jane Besselink (1989-93)
99	Lisa Etienne (2006-09)
98	MaryLynne Schaefer (2005-09)
94	Ikea Witt (2003-07)
92	Pauline Frisina (1985-89)

MINUTES PLAYED

3,737	Maureen DiJulia (1995-99)
3,695	Heather Weindorfer (1993-97)
3,499	Erica Witt (2003-07)
3,403	Pauline Frisina (1985-89)
3,339	Erica Beverly (2005-10)
3,307	Erika Messam (2002-06)
3,247	MaryLynne Schaefer (2005-09)
3,163	Danielle Hood (2004-08)
3,076	Betsy Anderson (1987-91)
3,017	Kelly Pennwell (1990-94)

MINUTES AVERAGE (min. 50 games)

35.1	Pauline Frisina (1985-89)
34.6	Maureen DiJulia (1995-99)
33.9	Heather Weindorfer (1993-97)
29.9	Betsy Anderson (1987-91)
29.8	Lana Thomas (1990-93)
29.8	Erika Messam (2002-06)
28.9	Maura Rodgers (1989-93)
28.8	Trish Slocum (1985-87, 1988-90)
28.4	Mary-Jane Besselink (1989-93)
28.0	Ikea Witt (2003-07)

BOLD PLAYERS INDICATE CURRENT HARTFORD HAWKS

HARTFORD WOMEN'S BASKETBALL

INDIVIDUAL SEASON RECORDS

TOTAL POINTS	
534	Danielle Hood (2007-08)
499	Heather Weindorfer (1995-96)
484	Heather Weindorfer (1996-97)
462	Diana Delva (2009-10)
453	Candace Ward (1993-94)
447	Danielle Hood (2006-07)
447	Heather Weindorfer (1994-95)
431	Danielle Hood (2005-06)
399	Candace Ward (1995-96)
383	Ruthanne Doherty (2011-12)

THREE-POINT FIELD PERCENTAGE (min. 25 made)	
.410	Pauline Frisina (1988-89)
.409	Danielle Wexler (2003-04)
.395	Dorcas Miller (2001-02)
.377	Bridget Murray (2002-03)
.377	Ilicia Mathis (2008-09)
.372	Bridget Murray (2003-04)
.370	Betsy Anderson (1989-90)
.368	Tracy Stolle (1998-99)
.365	Mary Silvia (2010-11)
.362	Janeka Lopp (2000-01)

ASSISTS	
168	Maureen DiJulia (1998-99)
150	Maureen DiJulia (1995-96)
145	Trish Slocum (1986-87)
144	Maureen DiJulia (1996-97)
143	Maureen DiJulia (1997-98)
118	Lisa Etienne (2007-08)
116	Jackie Smith (2010-11)
115	Candace Ward (1995-96)
112	Candace Ward (1993-94)
112	Maura Rodgers (1992-93)
112	Erika Messam (2005-06)

SCORING AVERAGE	
17.9	Heather Weindorfer (1996-97)
17.8	Heather Weindorfer (1995-96)
16.8	Candace Ward (1993-94)
16.7	Laurie Weinstein (1976-77)
16.6	Heather Weindorfer (1994-95)
15.7	Laurie Weinstein (1975-76)
15.7	Danielle Hood (2007-08)
15.2	Karen Ringland (1986-87)
15.0	Pauline Frisina (1988-89)
14.9	Pauline Frisina (1986-87)

FREE THROWS MADE	
161	Heather Weindorfer (1994-95)
145	Heather Weindorfer (1995-96)
132	Heather Weindorfer (1996-97)
130	Heather Weindorfer (1993-94)
118	Danielle Hood (2007-08)
106	Diana Delva (2009-10)
101	Sue Tremblay (1987-88)
101	Erica Beverly (2008-09)
95	Ikea Witt (2003-04)
93	Candace Ward (1993-94)

BLOCKS	
65	Erica Beverly (2009-10)
64	Diana Delva (2009-10)
61	Erica Beverly (2008-09)
44	Diana Delva (2008-09)
39	Kenitra Johnson (1999-00)
38	Erica Beverly (2005-06)
36	Patrice Ward (1988-89)
34	Wendy Davies (1984-85)
31	Kenitra Johnson (2001-02)
30	Diana Delva (2006-07)
30	Tanika Price (2004-05)

FIELD GOALS	
207	Danielle Hood (2007-08)
183	Danielle Hood (2006-07)
180	Danielle Hood (2005-06)
178	Diana Delva (2009-10)
177	Heather Weindorfer (1995-96)
176	Heather Weindorfer (1996-97)
172	Karen Ringland (1986-87)
170	Mary-Jane Besselink (1992-93)
165	Candace Ward (1993-94)
157	Pauline Frisina (1987-88)

FREE THROWS ATTEMPTED	
268	Heather Weindorfer (1994-95)
205	Heather Weindorfer (1995-96)
203	Heather Weindorfer (1996-97)
183	Heather Weindorfer (1993-94)
156	Danielle Hood (2007-08)
152	Sue Tremblay (1987-88)
152	Desiree Humbert (1996-97)
145	Erica Beverly (2008-09)
141	Diana Delva (2009-10)
127	Candace Ward (1993-94)

STEALS	
83	Candace Ward (1993-94)
70	Lana Thomas (1990-91)
68	Candace Ward (1993-94)
68	Allison Macca (1999-00)
66	Erika Messam (2003-04)
65	Hope Kelley (1987-88)
63	Paula Whittier (1984-85)
62	Trish Slocum (1989-90)
61	Maura Rodgers (1992-93)
60	Ruthanne Doherty (2011-12)
60	Daphne Elliott (2011-12)

FIELD GOALS ATTEMPTED	
418	Danielle Hood (2007-08)
406	Candace Ward (1993-94)
388	Danielle Hood (2006-07)
385	Pauline Frisina (1986-87)
383	Pauline Frisina (1987-88)
355	Heather Weindorfer (1995-96)
348	Candace Ward (1995-96)
345	Ruthanne Doherty (2011-12)
344	Janeka Lopp (2001-02)
343	Heather Weindorfer (1996-97)

FREE THROW PERCENTAGE (min. 50 made)	
.843	Erika Messam (2004-05)
.822	Ilicia Mathis (2008-09)
.818	Ikea Witt (2005-06)
.818	Nikkia Smith (2011-12)
.815	Jackie Smith (2009-10)
.812	Ikea Witt (2003-04)
.800	Shawna Murphy (1996-97)
.797	Eryn Ivnik (1997-98)
.792	Tracy Stolle (1997-98)
.788	Kathy Burke (1981-82)

MINUTES PLAYED	
1,045	Ikea Witt (2006-07)
995	Maureen DiJulia (1997-98)
993	Daphne Elliott (2011-12)
974	Maura Rodgers (1992-93)
965	Danielle Wexler (2004-05)
957	Heather Weindorfer (1995-96)
957	Maureen DiJulia (1998-99)
955	Jackie Smith (2010-11)
952	MaryLynne Schaefer (2006-07)
941	Danielle Hood (2006-07)

FIELD GOAL PERCENTAGE (min. 50 made)	
.647	Diana Delva (2009-10)
.620	Kenitra Johnson (1998-99)
.610	Karen Ringland (1986-87)
.606	Diana Delva (2007-08)
.601	Diana Delva (2008-09)
.580	Diana Delva (2006-07)
.556	Karen Ringland (1985-86)
.551	Erica Beverly (2005-06)
.547	Danielle Hood (2005-06)
.542	Kenitra Johnson (2000-01)

REBOUNDS	
271	Erica Beverly (2005-06)
259	Heather Weindorfer (1996-97)
259	Diana Delva (2009-10)
256	Maureen Broderick (1993-94)
249	Erica Beverly (2007-08)
239	Kenitra Johnson (2001-02)
235	Mary-Jane Besselink (1990-91)
234	Diana Delva (2006-07)
231	Diana Delva (2007-08)
231	Erica Beverly (2008-09)

MINUTES AVERAGE (min. 25 games)	
37.5	Maura Rodgers (1992-93)
36.9	Maureen DiJulia (1997-98)
36.8	Maureen DiJulia (1998-99)
36.2	Pauline Frisina (1988-89)
35.8	Pauline Frisina (1987-88)
34.8	Pauline Frisina (1987-88)
34.3	Heather Weindorfer (1993-94)
34.2	Heather Weindorfer (1995-96)
34.0	Kelly Pennwell (1993-94)
34.0	Trish Slocum (1989-90)

THREE-POINT FIELD GOALS MADE (min. 25 made)	
63	MaryLynne Schaefer (2007-08)
57	Mary Silvia (2010-11)
57	MaryLynne Schaefer (2006-07)
56	MaryLynne Schaefer (2005-06)
49	Danielle Wexler (2004-05)
49	Jamie McCabe (2007-08)
48	Daphne Elliott (2011-12)
47	Dorcas Miller (2001-02)
46	MaryLynne Schaefer (2008-09)
44	Jackie Smith (2009-10)

REBOUNDING AVERAGE	
12.0	Karen Groah (1978-79)
9.6	Heather Weindorfer (1996-97)
9.5	Maureen Broderick (1993-94)
8.7	Erica Beverly (2005-06)
8.7	Kathy Burke (1979-80)
8.6	Mary-Jane Besselink (1989-90)
8.3	Wendy Davies (1984-85)
8.3	Desiree Humbert (1996-97)
8.2	Lana Thomas (1991-92)
8.1	Mary-Jane Besselink (1990-91)
8.1	Diana Delva (2009-10)

3 PT. FIELD GOALS ATTEMPTED	
198	MaryLynne Schaefer (2006-07)
175	MaryLynne Schaefer (2007-08)
158	MaryLynne Schaefer (2008-09)
156	Mary Silvia (2010-11)
156	MaryLynne Schaefer (2005-06)
153	Danielle Wexler (2004-05)
153	Jamie McCabe (2007-08)
151	Daphne Elliott (2011-12)
135	Jackie Smith (2009-10)
125	Jackie Smith (2010-11)

BOLD PLAYERS INDICATE CURRENT HARTFORD HAWKS

HARTFORD WOMEN'S BASKETBALL

INDIVIDUAL GAME RECORDS

FG Made:	14.....Heather Weindorfer vs. Hofstra	2/23/96
	14.....Janeka Lopp vs. Drexel.....	2/10/01
FG Attempted:	24.....Karen Ringland vs. Central Connecticut.....	12/11/84
	24.....Pauline Frisina vs. Maine	2/6/88
	24.....Kelly Penwell vs. Delaware	2/1/92
FG Percentage:	1.000.....Diana Delva (8-8) vs. Vermont	2/27/10
3-Point FG Made:	6.....Danielle Wexler vs. Northeastern.....	2/9/05
	6.....Danielle Wexler vs. Boston University	3/12/06
	6.....Mary Silvia vs. Temple.....	11/28/09
	6.....Jackie Smith vs. Stony Brook.....	1/30/10
	6.....Jackie Smith vs. Binghamton.....	2/18/10
3-Point FG Att.:	15..... Daphne Elliott at UMBC	1/20/11
3-Point FG Pct.:	1.000.....Jackie Smith (6-6) vs. Stony Brook.....	1/30/10
	1.000.....Liz Stich (5-5) vs. Quinnipiac.....	12/7/02
	1.000.....Michelle Gronbeck (4-4) vs. Maine	2/16/95
	1.000.....MaryLynne Schaefer (4-4) vs. Massachuestts.....	12/6/06
	1.000.....Jamie McCabe (4-4) vs. Purdue.....	11/12/06
	1.000.....Mary Silvia (4-4) vs. Boston Univ.....	2/13/11
FT Made:	13.....Heather Weindorfer vs. Delaware	2/10/95
	13.....Heather Weindorfer vs. New Hampshire	2/18/95
	13.....Tracy Stolle vs. Delaware	1/16/98
FT Attempted:	20.....Heather Weindorfer vs. Delaware	2/10/95
FT Percentage:	1.000.....Betsy Andersen (11-11) vs. Brooklyn	1/27/89
	1.000.....Shawna Murphy (11-11) vs. Buffalo	12/29/96
	1.000.....Ilicia Mathis (10-10) vs. Boston University	2/24/09
	1.000.....Ikea Witt (9-9) vs. Binghamton.....	2/18/06
	1.000.....Danielle Hood (8-8) vs. Stony Brook	3/5/08
	1.000.....Erica Beverly (8-8) vs. Brigham Young	11/20/07
	1.000.....Jackie Smith (8-8) vs. Temple.....	11/28/09
	1.000.....Jackie Smith (8-8) at Boston University	3/12/11
	1.000..... Daphne Elliott (8-8) at UMBC.....	1/18/12
	1.000..... Daphne Elliott (7-7) at Boston University	1/23/11
Assists:	14.....Maureen DiJulia vs. Maine	3/5/96
	14.....Trish Slocum vs. C.W. Post	12/13/86
Turnovers:	13.....Pauline Frisina vs. New Hampshire	1/17/87
Blocks:	7.....Wendy Davies vs. Assumption	2/15/84
Division I Record:	6.....Patrice Ward vs. Central Connecticut.....	1/14/89
	6.....Erica Beverly vs. Bowling Green.....	12/21/08
	6.....Diana Delva vs. Vermont.....	3/13/10
Steals:	8.....Lana Thomas vs. Central Connecticut	11/23/91
	8.....Lana Thomas vs. Marist	1/4/92
	8.....Candace Ward vs. Columbia	11/28/95
	8.....Candace Ward vs. Yale	1/16/96
	8..... Amber Bepko vs. New Hampshire.....	2/1/12
	8..... Amber Bepko at Vermont	2/5/12

POINTS

36.....Janeka Lopp (2000-01).....	vs. Drexel
34.....Laurie Weinstein (1976-77).....	vs. Quinnipiac
32.....Heather Weindorfer (1994-95).....	vs. Hofstra
31.....Candace Ward (1993-94).....	vs. Central Connecticut
30.....Danielle Hood (2005-06).....	vs. Albany
30.....Heather Weindorfer (1995-96).....	vs. Hofstra
30.....Diana Delva (2008-09).....	at Quinnipiac
29.....Candace Ward (1992-93).....	vs. Drexel
29.....Kathy Burke (1982-83).....	vs. Western Connecticut
29.....Ikea Witt (2004-05).....	vs. Boston University

REBOUNDS

23.....Kathy Burke (1981-82).....	vs. Westfield
20.....Mary-Jane Besselink (1992-93).....	vs. Boston University
20.....Karen Ringland (1984-85).....	vs. Assumption
19.....Carrie Hanrahan (1980-81).....	vs. Assumption
19.....Heather Weindorfer (1996-97).....	vs. Towson State
18.....Heather Weindorfer (1995-96).....	vs. Columbia
18.....Maureen Broderick (1993-94).....	vs. Central Connecticut
18.....Kathy Burke (1982-83).....	vs. Western Connecticut

BOLD PLAYERS INDICATE CURRENT HARTFORD HAWKS

HARTFORD WOMEN'S BASKETBALL

TEAM GAME RECORDS

FG Made:	36, vs. Central Connecticut	2/3/87
FG Attempted:	85, vs. New Hampshire	3/2/91
FG Percentage:632 (24-38), vs. Drexel	1/4/99
3-Point FG Made:	13, vs. Vermont	1/29/03
3-Point FG Attempted:	31, vs. Northeastern	12/13/09
3-Point FG Percentage:714 (5-7), vs. Saint Joseph's	12/21/05
FT Made:	35, vs. Drexel	1/4/99
FT Attempted:	42, vs. Eastern Kentucky	11/26/99
	42, vs. Colgate	12/22/94
	42, vs. Vermont	1/20/88
FT Percentage:950 (19-20), vs. Fairfield	1/9/88
Rebounds:	74, vs. Assumption	1/12/84
Personal Fouls:	35, vs. Fordham	12/14/91
Assists:	27, vs. UMBC	2/2/10
Turnovers:	42, vs. New Haven	12/5/85
Blocks:	11, vs. Yale	1/20/86
	11, vs. Vermont	3/13/10
Steals:	25, vs. Columbia	11/26/89

MOST POINTS SCORED

105	vs. Saint Joseph's 1/25/80
99	vs. Harvard 12/10/87
89	vs. UNC-Asheville 11/24/01
86	vs. Eastern Kentucky 11/26/99
85	vs. Connecticut College 1978-79
85	vs. Connecticut College 1979-80
85	vs. Colgate 1/22/94
85	vs. Towson State 1/12/96
85	vs. Drexel 2/25/96
85	vs. Quinnipiac 12/7/02
85	vs. UMBC 2/2/10

MOST POINTS ALLOWED

99	at Vermont 1/4/00
99	vs. Boston College 1/3/90
97	vs. Boston University 2/21/87
97	vs. Maine 1/21/95
96	vs. Eastern Kentucky 11/26/99
95	vs. Fairfield 12/2/86
95	vs. Providence 12/1/90

FEWEST POINTS SCORED

24	at Connecticut 12/29/07
30	vs. Vermont 3/10/92
30	vs. Maine 1/20/90
31	vs. St. Peter's 12/7/85
32	vs. Connecticut 12/7/04
33	vs. Clark 1980-81
33	vs. Springfield 2/8/84
33	vs. Massachusetts 11/25/97

FEWEST POINTS ALLOWED

25	vs. Saint Joseph's 1978-79
27	vs. Saint Joseph's 1/25/80
28	vs. Columbia 1/29/94
29	vs. Mohegan CC 1977-78

TEAM SEASON RECORDS

Games Played	34, 2006-07, 2007-08
Wins	28, 2007-08
Conference Wins	16, 2009-10
Winning Percentage871 (27-4), 2005-06
Field Goals Made	796, 2007-08
Field Goals Attempted	1,944, 2007-08
Field Goal Percentage452 (683-1,511), 1992-93
Three-Point Field Goals Made	199, 2010-11
Three-Point Field Goals Attempted	602, 2009-10
Three-Point Field Goal Percentage397 (31 of 78), 1992-93
Free Throws Made	437, 1995-96
Free Throws Attempted	656, 1994-95
Free Throw Percentage728, (299-411), 1992-93
Rebounds	1,320, 2007-08
Rebound Average	47.3, 1985-86
Rebound Margin	+6.1, 2009-10
Assists	481, 2007-08
Turnovers	676, 1984-85
Blocks	161, 2009-10
Steals	299, 1989-90, 2011-12
Points	2,191, 2007-08
Scoring Average	71.5, 1979-80
Division I Record	65.5, 1995-96, 2005-06

STREAKS

Team Victories	20, 2009-10
Team Defeats	16, 1983-84/Division I - 12, 1988-89

TEAM/GAME

Largest Margin of Victory	78 points vs. Saint Joseph's (105-27, 1979-80)
Division I Record	43 points vs. Columbia (71-28, 11/29/94)
Largest Margin of Defeat	55 points vs. Notre Dame (98-43, 2011-12)
Most Points Scored (Combined)	185, (1987-88 vs. Harvard, 99-86 win)
Fewest Points Scored (Combined)	74, (1/26/10 vs. Vermont, 38-36 win)

HARTFORD WOMEN'S BASKETBALL

JENNIFER RIZZOTTI

HEAD COACH • 14TH SEASON • 261-151 (.633) OVERALL



In 13 years Jennifer Rizzotti has built the University of Hartford women's basketball program into an America East power and a nationally recognized program, winning four regular season championships, five tournament championships and making six trips to the NCAA Tournament.

Rizzotti, a three-time America East Coach of the Year, has led the Hawks to eight straight postseason appearances including this past season earning the program's second at-large bid into the WNIT. The New Fairfield, Conn. native has compiled a career record of 255-190, earning her milestone 250th victory on February 1, 2012 against New Hampshire. Her 255 career wins is the most by any coach at the University of Hartford for both men's and women's basketball.

In 2009-10 season, Rizzotti led the Hawks to their first ever appearance in the ESPN/USA Today Coaches Poll and the Associated Press Poll, cracking the top-25 for the first time on February 9, 2010. The Hawks reached as high as 19th in the country that season.

Away from Hartford, Rizzotti is a two-time gold medalist with USA Basketball after leading the U-18 and U-19 National Teams at the FIBA World Championships in 2010 and 2011, respectively. Her success with USA Basketball led to Rizzotti being named the 2011 USA Basketball National Coach of the Year joining coaching greats like Geno Auriemma (UConn), Mike Kryzewski (Duke), Van Chancellor (LSU), Jim Boheim (Syracuse) and Tara VanDerveer (Stanford). This past summer, Rizzotti was named as one of six members of the Women's Basketball Hall of Fame Class of 2013 that will be inducted in June.

Rizzotti not only instills success on the court within her program; she expects her student-athletes to be successful in the classroom as well. Following the 2010-11 season, the Hawks cracked the top-10 in the nation academically, ranking seventh in the WBCA's annual academic top-25. The 2010-11 honor marked the third-straight season for the Hawks in the top 25. Individually two players have received national distinction for their success in the classroom as Mary Silvila ('10) and Alex Hall ('13) were both named to the Division I AAA Scholar Athlete Team. Silvia was also named to the Capital One Academic All-America District 1 First Team.

Prior to joining the Hawks, Rizzotti played eight seasons of professional basketball following her graduation from the University of Connecticut in 1996. While with the Huskies, the point guard was the Associated Press National Player of the Year and the Wade Trophy winner as college basketball's outstanding senior player in 1995-96. She was also a two-time Kodak All-America First Team selection, a GTE/CoSIDA Women's Basketball Academic All-American, the Big East Player of the Year, and the Big East Women's Basketball Scholar-Athlete of the Year. During the Huskies' memorable run to the national championship in 1995, Rizzotti was featured on the cover of Sports Illustrated.

Rizzotti and her husband, Bill Sullivan, welcomed their second child, Conor, in July of 2008. Older brother, Holden, was born in April 2005, shortly after the Hawks played Rutgers in the NCAA Tournament.

RIZZOTTI'S ALL-TIME COACHING RECORD						
YEAR	OVERALL	PCT.	CONF.	PCT.	POSTSEASON	
1999-00	14-14	.500	9-9	.500		
2000-01	15-14	.517	9-9	.500		
2001-02	16-15	.516	9-7	.562	America East Tournament Champions NCAA First Round	
2002-03	7-21	.250	5-11	.312		
2003-04	18-12	.600	9-9	.500		
2004-05	22-9	.710	13-5	.722	America East Tournament Champions NCAA First Round	
2005-06	27-4	.871	15-1	.938	America East Regular Season Champions America East Tournament Champions NCAA Second Round	
2006-07	25-9	.735	15-1	.938	America East Regular Season Champions WNIT Second Round	
2007-08	28-6	.824	14-2	.874	America East Regular Season Champions America East Tournament Champions NCAA Second Round	
2008-09	20-12	.625	14-2	.874	WNIT Second Round	
2009-10	27-5	.844	16-0	1.000	America East Regular Season Champions NCAA First Round	
2010-11	17-16	.515	11-5	.688	America East Tournament Champions NCAA First Round	
2011-12	19-13	.594	10-6	.625	WNIT First Round	
CAREER TOTAL	255-150	.630	149-67	.690	WINNINGEST COACH IN SCHOOL HISTORY	

CAREER RECORD vs. OPPONENTS

<i>Albany</i>	20-7
<i>Binghamton</i>	19-6
Boston College	1-1
<i>Boston University</i>	18-12
Bowling Green	1-1
Brigham Young	2-0
Bucknell	1-0
<i>CCSU</i>	7-1
Clemson	0-1
Colorado	0-1
Columbia	2-0
<i>Connecticut</i>	0-7
Coppin State	2-0
<i>Dartmouth</i>	7-4
Delaware	0-5
DePaul	0-1
Drexel	3-1
Duke	1-0
Eastern Kentucky	0-1
Eastern Michigan	0-1
Fairfield	2-0
Fairleigh Dickinson	2-0
George Mason	0-2
George Washington	0-2
Georgia	0-1
Harvard	1-1
Hawaii	2-0
Hofstra	6-2
Holy Cross	1-4
Kansas	0-1
La Salle	1-0
Liberty	1-0
Long Beach State	1-0
Long Island	2-0
Louisville	1-1
<i>Loyola</i>	3-0
LSU	0-1
<i>Maine</i>	20-10
Manhattan	2-1
<i>Marist</i>	3-5
<i>Massachusetts</i>	4-1
Miami	1-1
Michigan State	1-1
Montana	0-1
<i>New Hampshire</i>	23-5
Northeastern	8-7
Northern Arizona	0-1
Notre Dame	0-1
Ohio State	0-2
Oklahoma	0-1
Penn State	0-1
Pittsburgh	1-0
Providence	3-3
Purdue	0-1
<i>Quinnipiac</i>	2-2
Rhode Island	3-1
<i>Richmond</i>	1-1
Rider	2-0
Rutgers	0-1
Sacred Heart	4-0
Saint Joseph's	3-0
Seton Hall	1-1
Siena	0-1
South Carolina	0-1
<i>St. John's</i>	2-3
St. Joseph's	1-0
St. Peter's	1-1
<i>Stony Brook</i>	20-6
Syracuse	1-1
TCU	1-0
Temple	2-1
Texas A&M	0-1
Towson	3-0
Tulane	0-1
UAB	1-0
UCF	1-0
<i>UMBC</i>	16-5
UNC-Asheville	1-0
Utah	0-1
<i>Vermont</i>	19-10
Virginia	2-0
Wisconsin-Green Bay	0-1
Yale	1-4

* Bold Italics indicate 2012-13 opponents

HARTFORD WOMEN'S BASKETBALL



2 DAPHNE ELLIOTT

SENIOR • GUARD • FAIRFIELD, CT • 5'6" • PSYCHOLOGY

2012-13: Led the Hawks with 14 points in the season opener against Loyola ... also led the team with four steals against Loyola ... one of four players to finish in double figures in the first road game at CCSU with 11 points ... completed her third game in double figures, in four total, with 12 points in the home win over Richmond ... led the Hawks with, a season-high, five assists in the home win over Providence.

SEASON/CAREER HIGHS

POINTS

Season 14 vs. Loyola (11.9.12)
 Career 21 (2x) last vs. TCU (11.25.11)

REBOUNDS

Season 5 at CCSU (11.16.12)
 Career 10 at Providence (12.31.11)

FIELD GOALS

Season 5 vs. Loyola (11.9.12)
 Career 6 (7x) last vs. Binghamton (2.11.12)

FIELD GOAL ATTEMPTS

Season 11 vs. Loyola (11.9.12)
 Career 20 at UMBC (1.20.11)

THREE POINT FIELD GOALS

Season 2 (2x) last at CCSU (11.16.12)
 Career 5 (3x) last vs. Binghamton (2.11.12)

THREE POINT FIELD GOAL ATTEMPTS

Season 7 at CCSU (11.16.12)
 Career 15 at UMBC (1.20.11)

FREE THROWS

Season 5 (2x) last vs. Providence (12.1.12)
 Career 8 (2x) last at UMBC (1.18.12)

FREE THROW ATTEMPTS

Season 6 (3x) last vs. Providence (12.1.12)
 Career 9 vs. Albany (3.4.11)

ASSISTS

Season 5 vs. Providence (12.1.12)
 Career 9 vs. Harvard (12.29.11)

STEALS

Season 4 vs. Loyola (11.9.12)
 Career 5 at Vermont (2.15.12)

BLOCKS

Season -
 Career 2 (2x) last vs. CCSU (11.22.11)

MINUTES

Season 27 vs. Marist (11.13.12)
 Career 38 (2x) last at Albany (1.28.12)

2012-13 ELLIOTT GAME-BY-GAME

Opponent	GS	Min	FG-FGA	3FG-FGA	FT-FTA	Off	Def	Tot	PF	A	TO	Blk	Stl	Pts
LOYOLA	*	23	5-11	2-6	2-2	1	1	2	1	0	2	0	4	14
MARIST	*	27	2-4	1-3	1-2	0	2	2	2	1	0	0	2	6
at Central Conn.	*	22	2-7	2-7	5-6	1	4	5	2	3	3	0	3	11
RICHMOND	*	24	4-6	1-3	3-6	0	2	2	0	0	0	0	3	12
at Massachusetts	*	20	2-7	1-4	0-0	1	1	2	1	2	3	0	1	5
ST. JOHN'S	*	19	2-7	1-4	1-2	1	2	3	4	2	1	0	0	6
PROVIDENCE	*	22	0-6	0-3	5-6	0	2	2	1	5	1	0	2	5
at Vanderbilt														
at Dartmouth														
QUINNIPIAC														
CONNECTICUT														
vs. UMES														
vs. Maryland/Brown														
at Binghamton														
BOSTON UNIV.														
at Maine														
STONY BROOK														
UMBC														
at Albany														
NEW HAMPSHIRE														
at Vermont														
at Boston Univ.														
BINGHAMTON														
at Stony Brook														
MAINE														
ALBANY														
at New Hampshire														
at UMBC														
VERMONT														
Totals	7	157	17-48	8-30	17-24	4	14	18	11	13	10	0	15	59

MISCELLANEOUS

2012-13 CAREER

DOUBLE FIGURE SCORING GAMES	3	44
20+ SCORING GAMES	-	4
DOUBLE FIGURE REBOUND GAMES	-	1
5+ ASSIST GAMES	-	6
GAMES WITH DOUBLE DOUBLE	-	0
GAMES LED TEAM IN SCORING	1	17
GAMES LED TEAM IN REBOUNDING	-	11
GAMES LED TEAM IN ASSISTS	2	18
GAMES LED TEAM IN STEALS	3	45
GAMES LED TEAM IN BLOCKS	-	5

ELLIOTT CAREER STATISTICS

Year	G-GS	FGM-A	PCT	3FGM-A	PCT	FT-A	PCT	OR-DR	TOT	AVG	A	TO	B	S	PTS	AVG	MIN
2009-10	32-1	61-196	.311	33-121	.273	37-56	.661	7-63	70	2.2	39	58	5	41	192	6.0	603
2010-11	33-30	87-251	.347	39-114	.342	66-84	.786	34-94	128	3.9	38	67	3	52	279	8.5	753
2011-12	32-30	98-266	.368	48-151	.318	73-95	.758	29-101	130	4.1	87	87	6	60	317	9.9	993
2012-13	7-7	17-48	.354	8-30	.267	17-24	.708	4-14	18	2.6	13	10	0	15	59	8.4	157
Totals	104-68	263-761	.346	128-416	.308	193-259	.745	74-272	346	3.3	177	222	14	168	847	8.1	2,506

ELLIOTT CAREER AMERICA EAST STATISTICS

Year	G-GS	FGM-A	PCT	3FGM-A	PCT	FT-A	PCT	OR-DR	TOT	AVG	A	TO	B	S	PTS	AVG	MIN
2009-10	16-0	31-102	.304	21-63	.333	15-20	.750	4-22	26	1.69	22	30	3	7	98	6.1	296
2010-11	16-16	41-120	.342	18-58	.310	33-42	.786	14-38	52	3.3	25	27	0	24	133	8.3	372
2011-12	16-15	46-124	.371	24-75	.320	36-42	.857	12-39	51	3.2	33	34	0	27	152	9.5	488
2012-13																	
Totals	48-31	118-346	.341	63-196	.321	84-104	.808	30-99	129	2.7	80	91	3	68	383	8.0	1,156

HARTFORD WOMEN'S BASKETBALL



4 CHRISTIE MICHALS

FRESHMAN • FORWARD • FAIRFAX, VA • 6'1" • MATHEMATICS

2012-13: Saw her first collegiate minutes in the home opener against Loyola ... finished with a rebound and an assist ... scored her first career points on a three pointer against Marist ... finished with eight points on 3-of-4 shooting and 2-of-2 at the line to go along with two assists and two steals in the road win at CCSU ... led the team with a career-high 13 points on 5-of-6 from the field, including a perfect 3-of-3 beyond the arc, against Providence.

SEASON/CAREER HIGHS

POINTS

Season 13 vs. Providence (12.1.12)
 Career 13 vs. Providence (12.1.12)

REBOUNDS

Season 1 (4x) last at UMass (11.21.12)
 Career 1 (4x) last at UMass (11.21.12)

FIELD GOALS

Season 5 vs. Providence (12.1.12)
 Career 5 vs. Providence (12.1.12)

FIELD GOAL ATTEMPTS

Season 6 vs. Providence (12.1.12)
 Career 6 vs. Providence (12.1.12)

THREE POINT FIELD GOALS

Season 3 vs. Providence (12.1.12)
 Career 3 vs. Providence (12.1.12)

THREE POINT FIELD GOAL ATTEMPTS

Season 3 vs. Providence (12.1.12)
 Career 3 vs. Providence (12.1.12)

FREE THROWS

Season 2 at CCSU (11.16.12)
 Career 2 at CCSU (11.16.12)

FREE THROW ATTEMPTS

Season 2 at CCSU (11.16.12)
 Career 2 at CCSU (11.16.12)

ASSISTS

Season 2 at CCSU (11.16.12)
 Career 2 at CCSU (11.16.12)

STEALS

Season 2 at CCSU (11.16.12)
 Career 2 at CCSU (11.16.12)

BLOCKS

Season 1 (2x) last vs. Richmond (11.18.12)
 Career 1 (2x) last vs. Richmond (11.18.12)

MINUTES

Season 19 at CCSU (11.16.12)
 Career 19 at CCSU (11.16.12)

2012-13 MICHALS GAME-BY-GAME

Opponent	GS	Min	FG-FGA	3FG-FGA	FT-FTA	Off	Def	Tot	PF	A	TO	Blk	Stl	Pts
LOYOLA	16	0-3	0-1	0-0	0 1 1	0 1 1	0 1 2	0 0 0	1 1 0	0 0 0	0 0 0	0 0 0	0 0 0	0
MARIST	7	1-1	1-1	0-0	0 0 0	1 1 0	1 1 2	1 1 2	1 1 0	0 0 0	0 0 0	0 0 0	0 0 0	3
at Central Conn.	19	3-4	0-0	2-2	1 0 1	1 2 1	1 1 2	1 1 2	1 1 2	1 1 2	1 1 2	1 1 2	2 8	8
RICHMOND	10	0-0	0-0	0-0	1 0 1	0 1 2	1 1 0	0 0 0	0 0 0	0 0 0	0 0 0	0 0 0	0 0 0	0
at Massachusetts	3	0-0	0-0	0-0	0 1 1	0 0 0	0 0 0	0 0 0	0 0 0	0 0 0	0 0 0	0 0 0	0 0 0	0
ST. JOHN'S	4	0-1	0-1	0-0	0 0 0	0 0 0	0 0 0	0 0 0	0 0 0	0 0 0	0 0 0	0 0 0	0 0 0	0
PROVIDENCE	15	5-6	3-3	0-0	0 0 0	0 0 0	0 0 0	0 0 0	0 0 0	0 0 0	0 0 0	0 0 0	0 0 0	13
at Vanderbilt														
at Dartmouth														
QUINNIPIAC														
CONNECTICUT														
vs. UMES														
vs. Maryland/Brown														
at Binghamton														
BOSTON UNIV.														
at Maine														
STONY BROOK														
UMBC														
at Albany														
NEW HAMPSHIRE														
at Vermont														
at Boston Univ.														
BINGHAMTON														
at Stony Brook														
MAINE														
ALBANY														
at New Hampshire														
at UMBC														
VERMONT														
Totals	74	9-15	4-6	2-2	2 2 4	2 2 4	2 5 5	2 2 4	2 5 5	2 2 2	2 2 2	2 2 2	2 2 2	24

MISCELLANEOUS

2012-13 CAREER

DOUBLE FIGURE SCORING GAMES	1	1
20+ SCORING GAMES	-	0
DOUBLE FIGURE REBOUND GAMES	-	0
5+ ASSIST GAMES	-	0
GAMES WITH DOUBLE DOUBLE	-	0
GAMES LED TEAM IN SCORING	1	1
GAMES LED TEAM IN REBOUNDING	-	0
GAMES LED TEAM IN ASSISTS	-	0
GAMES LED TEAM IN STEALS	-	0
GAMES LED TEAM IN BLOCKS	2	2

MICHALS CAREER STATISTICS

Year	G-GS	FGM-A	PCT	3FGM-A	PCT	FT-A	PCT	OR-DR	TOT	AVG	A	TO	B	S	PTS	AVG	MIN
2012-13	7-0	9-15	.600	4-6	.667	2-2	1.000	2-2	4	0.6	5	5	2	2	24	3.4	74
Totals	7-0	9-15	.600	4-6	.667	2-2	1.000	2-2	4	0.6	5	5	2	2	24	3.4	74

MICHALS CAREER AMERICA EAST STATISTICS

Year	G-GS	FGM-A	PCT	3FGM-A	PCT	FT-A	PCT	OR-DR	TOT	AVG	A	TO	B	S	PTS	AVG	MIN
2012-13																	
Totals																	

HARTFORD WOMEN'S BASKETBALL



5 DIAMOND DOE

JUNIOR • GUARD • LYNN, MA • 5'8" • HEALTH SCIENCES

2012-13: saw her first action as a Hawks in the home win over Providence.

SEASON/CAREER HIGHS

POINTS

Season -
Career -

REBOUNDS

Season -
Career -

FIELD GOALS

Season -
Career -

FIELD GOAL ATTEMPTS

Season -
Career -

THREE POINT FIELD GOALS

Season -
Career -

THREE POINT FIELD GOAL ATTEMPTS

Season -
Career -

FREE THROWS

Season -
Career -

FREE THROW ATTEMPTS

Season -
Career -

ASSISTS

Season -
Career -

STEALS

Season -
Career -

BLOCKS

Season -
Career -

MINUTES

Season 1, vs. Providence (12.1.12)
Career 1, vs. Providence (12.1.12)

2012-13 DOE GAME-BY-GAME

Opponent	GS	Min	FG-FGA	3FG-FGA	FT-FTA	Off	Def	Tot	PF	A	TO	Blk	Stl	Pts
LOYOLA		Did Not Play												
MARIST		Did Not Play												
at Central Conn.		Did Not Play												
RICHMOND		Did Not Play												
at Massachusetts		Did Not Play												
ST. JOHN'S		Did Not Play												
PROVIDENCE	1		0-0	0-0	0-0	0	0	0	0	0	1	0	0	0
at Vanderbilt														
at Dartmouth														
QUINNIPIAC														
CONNECTICUT														
vs. UMES														
vs. Maryland/Brown														
at Binghamton														
BOSTON UNIV.														
at Maine														
STONY BROOK														
UMBC														
at Albany														
NEW HAMPSHIRE														
at Vermont														
at Boston Univ.														
BINGHAMTON														
at Stony Brook														
MAINE														
ALBANY														
at New Hampshire														
at UMBC														
VERMONT														
Totals	1		0-0	0-0	0-0	0	0	0	0	0	1	0	0	0

MISCELLANEOUS

2012-13 CAREER

DOUBLE FIGURE SCORING GAMES	-	0
20+ SCORING GAMES	-	0
DOUBLE FIGURE REBOUND GAMES	-	0
5+ ASSIST GAMES	-	0
GAMES WITH DOUBLE DOUBLE	-	0
GAMES LED TEAM IN SCORING	-	0
GAMES LED TEAM IN REBOUNDING	-	0
GAMES LED TEAM IN ASSISTS	-	0
GAMES LED TEAM IN STEALS	-	0
GAMES LED TEAM IN BLOCKS	-	0

DOE CAREER STATISTICS

Year	G-GS	FGM-A	PCT	3FGM-A	PCT	FT-A	PCT	OR-DR	TOT	AVG	A	TO	B	S	PTS	AVG	MIN
* 2010-11	26-9	15-258	.327	17-52	.327	28-55	.509	65-121	186	7.2	44	84	92	12	275	10.6	580
2012-13	1-0	0-0	.000	0-0	.000	0-0	.000	0-0	0	0.0	0	1	0	0	0	0.0	1
Totals	27-9	15-258	.327	17-52	.327	28-55	.509	65-121	186	6.9	44	85	92	12	275	10.2	581

* - Stats from University of Saint Joseph (West Hartford, CT)

DOE CAREER AMERICA EAST STATISTICS

Year	G-GS	FGM-A	PCT	3FGM-A	PCT	FT-A	PCT	OR-DR	TOT	AVG	A	TO	B	S	PTS	AVG	MIN
2012-13																	
Totals																	

HARTFORD WOMEN'S BASKETBALL



10 ALEX HALL

SENIOR • GUARD • PEMBROKE, NH • 5'7" • MANAGEMENT

2012-13: Finished with five points, three rebounds, three assists and two steals in the home opener against Loyola ... finished the Marist game 5-of-7 from the field for 10 points ... finished her second game of the season in double figures adding 10 points to go along a team-high seven rebounds and five assists at UMass ... added eight points on 3-of-6 shooting and 2-of-2 at the free throw line in the home win over Providence.

SEASON/CAREER HIGHS

POINTS

Season 10 (2x) last at UMass (11.21.12)
Career 22 vs. New Hampshire (2.1.12)

REBOUNDS

Season 7 at UMass (11.21.12)
Career 10 vs. Utah (11.26.10)

FIELD GOALS

Season 5 vs. Marist (11.13.12)
Career 9 at Dartmouth (11.22.09)

FIELD GOAL ATTEMPTS

Season 9 at UMass (11.21.12)
Career 20 at Dartmouth (11.22.09)

THREE POINT FIELD GOALS

Season 1 vs. Loyola (11.9.12)
Career 5 vs. Northeastern (12.13.09)

THREE POINT FIELD GOAL ATTEMPTS

Season 3 vs. Richmond (11.18.12)
Career 9 vs. New Hampshire (2.1.12)

FREE THROWS

Season 2 (2x) last vs. Providence (12.1.12)
Career 7 at Hofstra (12.22.10)

FREE THROW ATTEMPTS

Season 4 at UMass (11.21.12)
Career 13 vs. CCSU (11.22.11)

ASSISTS

Season 4 at UMass (11.21.12)
Career 8 at Maine (2.8.11)

STEALS

Season 2 vs. Loyola (11.9.12)
Career 2 (13x) last vs. Loyola (11.9.12)

BLOCKS

Season -
Career 1 (4x) last vs. Albany (1.2.12)

MINUTES

Season 28 at UMass (11.21.12)
Career 43 at UMBC (1.20.11)

2013-13 HALL GAME-BY-GAME

Opponent	GS	Min	FG-FGA	3FG-FGA	FT-FTA	Off	Def	Tot	PF	A	TO	Blk	Stl	Pts
LOYOLA	15		2-4	1-2	0-0	0	3	3	2	3	1	0	2	5
MARIST	24		5-7	0-1	0-0	1	0	1	0	1	2	0	0	10
at Central Conn.	23		2-7	0-1	0-0	0	2	2	0	2	1	0	0	4
RICHMOND	18		0-3	0-3	2-2	0	1	1	0	0	2	0	0	2
at Massachusetts	28		3-9	0-1	4-4	1	6	7	2	4	5	0	0	10
ST. JOHN'S	14		1-2	0-1	0-0	0	2	2	1	0	0	0	0	2
PROVIDENCE	17		3-6	0-2	2-2	0	0	0	1	1	1	0	0	8
at Vanderbilt														
at Dartmouth														
QUINNIPIAC														
CONNECTICUT														
vs. UMES														
vs. Maryland/Brown														
at Binghamton														
BOSTON UNIV.														
at Maine														
STONY BROOK														
UMBC														
at Albany														
NEW HAMPSHIRE														
at Vermont														
at Boston Univ.														
BINGHAMTON														
at Stony Brook														
MAINE														
ALBANY														
at New Hampshire														
at UMBC														
VERMONT														
Totals	143		16-38	1-11	8-8	2	14	16	6	11	12	0	2	41

MISCELLANEOUS

2012-13 CAREER

DOUBLE FIGURE SCORING GAMES	2	23
20+ SCORING GAMES	-	4
DOUBLE FIGURE REBOUND GAMES	-	1
5+ ASSIST GAMES	-	4
GAMES WITH DOUBLE DOUBLE	-	0
GAMES LED TEAM IN SCORING	-	12
GAMES LED TEAM IN REBOUNDING	1	6
GAMES LED TEAM IN ASSISTS	1	15
GAMES LED TEAM IN STEALS	-	8
GAMES LED TEAM IN BLOCKS	-	1

HALL CAREER STATISTICS

Year	G-GS	FGM-A	PCT	3FGM-A	PCT	FT-A	PCT	OR-DR	TOT	AVG	A	TO	B	S	PTS	AVG	MIN
2009-10	31-10	52-166	.313	21-70	.300	31-42	.738	13-41	54	1.7	44	50	0	11	156	5.0	563
2010-11	33-32	92-246	.374	18-56	.321	43-61	.705	40-80	120	3.6	45	55	4	19	245	7.4	855
2011-12	32-26	75-210	.357	26-76	.329	36-54	.667	27-51	78	2.4	50	59	1	19	212	6.6	826
2012-13	7-0	9-15	.600	4-6	.667	2-2	1.000	2-2	4	0.6	5	5	2	2	24	3.4	74
Totals	103-68	235-660	.356	66-216	.306	118-165	.715	82-186	268	2.6	150	176	5	51	654	6.3	2,387

HALL CAREER AMERICA EAST STATISTICS

Year	G-GS	FGM-A	PCT	3FGM-A	PCT	FT-A	PCT	OR-DR	TOT	AVG	A	TO	B	S	PTS	AVG	MIN
2009-10	15-0	13-52	.250	5-20	.250	16-18	.889	3-21	24	1.6	29	21	0	5	47	3.1	218
2010-11	16-15	41-110	.373	6-22	.273	14-19	.737	18-36	54	3.4	29	25	1	10	102	6.4	427
2011-12	16-13	45-113	.398	23-51	.451	21-25	.840	15-32	47	2.9	33	28	1	14	134	8.4	470
2012-13																	
Totals	4728	99-275	.3660	34-93	.366	51-62	.823	36-89	125	2.7	91	74	2	29	283	6.0	1,115

HARTFORD WOMEN'S BASKETBALL



12 KATELYN SKINER

FRESHMAN • GUARD • HOMER CITY, PA • 5'10" • MATH/SEC. EDUCATION

2012-13: Saw her first collegiate minutes in the home opener against Loyola.

SEASON/CAREER HIGHS

POINTS

Season -
Career -

REBOUNDS

Season -
Career -

FIELD GOALS

Season -
Career -

FIELD GOAL ATTEMPTS

Season -
Career -

THREE POINT FIELD GOALS

Season -
Career -

THREE POINT FIELD GOAL ATTEMPTS

Season -
Career -

FREE THROWS

Season -
Career -

FREE THROW ATTEMPTS

Season -
Career -

ASSISTS

Season -
Career -

STEALS

Season -
Career -

BLOCKS

Season -
Career -

MINUTES

Season 4 vs. Marist (11.9.12)
Career 4 vs. Marist (11.9.12)

2012-13 SKINNER GAME-BY-GAME

Opponent	GS	Min	FG-FGA	3FG-FGA	FT-FTA	Off	Def	Tot	PF	A	TO	Blk	Stl	Pts
LOYOLA	4		0-0	0-0	0-0	0	0	0	3	0	0	0	0	0
MARIST	Did Not Play													
at Central Conn.	Injured													
RICHMOND	Injured													
at Massachusetts	Injured													
ST. JOHN'S	Injured													
PROVIDENCE	Injured													
at Vanderbilt														
at Dartmouth														
QUINNIPIAC														
CONNECTICUT														
vs. UMES														
vs. Maryland/Brown														
at Binghamton														
BOSTON UNIV.														
at Maine														
STONY BROOK														
UMBC														
at Albany														
NEW HAMPSHIRE														
at Vermont														
at Boston Univ.														
BINGHAMTON														
at Stony Brook														
MAINE														
ALBANY														
at New Hampshire														
at UMBC														
VERMONT														
Totals	4		0-0	0-0	0-0	0	0	0	3	0	0	0	0	0

MISCELLANEOUS

2012-13 CAREER

DOUBLE FIGURE SCORING GAMES	-	0
20+ SCORING GAMES	-	0
DOUBLE FIGURE REBOUND GAMES	-	0
5+ ASSIST GAMES	-	0
GAMES WITH DOUBLE DOUBLE	-	0
GAMES LED TEAM IN SCORING	-	0
GAMES LED TEAM IN REBOUNDING	-	0
GAMES LED TEAM IN ASSISTS	-	0
GAMES LED TEAM IN STEALS	-	0
GAMES LED TEAM IN BLOCKS	-	0

SKINNER CAREER STATISTICS

Year	G-GS	FGM-A	PCT	3FGM-A	PCT	FT-A	PCT	OR-DR	TOT	AVG	A	TO	B	S	PTS	AVG	MIN
2012-13	1-0	0-0	.000	0-0	.000	0-0	.000	0-0	0	0.0	0	0	0	0	0	0.0	4
Totals	1-0	0-0	.000	0-0	.000	0-0	.000	0-0	0	0.0	0	0	0	0	0	0.0	4

SKINNER CAREER AMERICA EAST STATISTICS

Year	G-GS	FGM-A	PCT	3FGM-A	PCT	FT-A	PCT	OR-DR	TOT	AVG	A	TO	B	S	PTS	AVG	MIN
2012-13																	
Totals																	

HARTFORD WOMEN'S BASKETBALL



13 TAYLOR CLARK

JUNIOR • FORWARD • SAYRE, PA • 6'0" • PHYSICAL THERAPY

2012-13: Saw her first action of the season at UMass, finishing with two points in five minutes.

SEASON/CAREER HIGHS

POINTS

Season 2 (2x) last vs. Providence (12.1.12)
Career 10 at Dartmouth (12.12.11)

REBOUNDS

Season 1 (2x) last vs. Providence (12.1.12)
Career 6 at Temple (12.10.10)

FIELD GOALS

Season 1 (2x) last vs. Providence (12.1.12)
Career 4 (3x) last vs. Manhattan (11.11.11)

FIELD GOAL ATTEMPTS

Season 3 at UMass (11.21.12)
Career 11 vs. Dartmouth (12.12.10)

THREE POINT FIELD GOALS

Season -
Career 1 vs. Syracuse (3.16.12)

THREE POINT FIELD GOAL ATTEMPTS

Season -
Career 2 (2x) last at Hofstra (12.22.10)

FREE THROWS

Season -
Career 4 (2x) last at Dartmouth (12.12.11)

FREE THROW ATTEMPTS

Season -
Career 5 vs. UMBC (3.6.11)

ASSISTS

Season 1 vs. Providence (12.1.12)
Career 2 (57) last vs. New Hampshire (2.1.12)

STEALS

Season -
Career 4 at Dartmouth (12.12.11)

BLOCKS

Season -
Career 2 (3x) last at UMBC (1.16.12)

MINUTES

Season 8 vs. Providence (12.1.12)
Career 31 at Boston Univ. (1.23.11)

2012-13 CLARK GAME-BY-GAME

Opponent	GS	Min	FG-FGA	3FG-FGA	FT-FTA	Off	Def	Tot	PF	A	TO	Blk	Stl	Pts
LOYOLA		Injured												
MARIST		Injured												
at Central Conn.		Injured												
RICHMOND		Did Not Play												
at Massachusetts	5		1-3	0-0	0-0	0	0	0	2	0	0	0	0	2
ST. JOHN'S	4		0-0	0-0	0-0	0	1	1	1	0	1	0	0	0
PROVIDENCE	8		1-1	0-0	0-0	0	1	1	0	1	0	0	0	2
at Vanderbilt														
at Dartmouth														
QUINNIPIAC														
CONNECTICUT														
vs. UMES														
vs. Maryland/Brown														
at Binghamton														
BOSTON UNIV.														
at Maine														
STONY BROOK														
UMBC														
at Albany														
NEW HAMPSHIRE														
at Vermont														
at Boston Univ.														
BINGHAMTON														
at Stony Brook														
MAINE														
ALBANY														
at New Hampshire														
at UMBC														
VERMONT														
Totals	17		2-4	0-0	0-0	0	2	2	3	1	1	0	0	4

MISCELLANEOUS

2012-13 CAREER

DOUBLE FIGURE SCORING GAMES	-	1
20+ SCORING GAMES	-	0
DOUBLE FIGURE REBOUND GAMES	-	0
5+ ASSIST GAMES	-	0
GAMES WITH DOUBLE DOUBLE	-	0
GAMES LED TEAM IN SCORING	-	0
GAMES LED TEAM IN REBOUNDING	-	0
GAMES LED TEAM IN ASSISTS	-	1
GAMES LED TEAM IN STEALS	-	3
GAMES LED TEAM IN BLOCKS	-	7

CLARK CAREER STATISTICS

Year	G-GS	FGM-A	PCT	3FGM-A	PCT	FT-A	PCT	OR-DR	TOT	AVG	A	TO	B	S	PTS	AVG	MIN
2010-11	32-19	35-95	.368	0-6	.000	10-21	.476	34-29	63	2.0	10	38	6	13	80	2.5	588
2011-12	27-1	25-57	.439	1-1	1.000	14-29	.483	25-27	52	1.9	20	22	5	11	65	2.4	388
2012-13	3-0	2-4	.500	0-0	.000	0-0	.000	0-2	2	0.7	1	1	0	0	4	1.3	17
Totals	62-20	62-156	.397	1-7	.143	24-50	.480	59-58	117	1.9	31	61	11	24	149	2.4	993

CLARK CAREER AMERICA EAST STATISTICS

Year	G-GS	FGM-A	PCT	3FGM-A	PCT	FT-A	PCT	OR-DR	TOT	AVG	A	TO	B	S	PTS	AVG	MIN
2010-11	16-15	24-55	.436	0-0	.000	5-8	.625	13-17	30	1.9	6	26	3	7	53	3.3	355
2011-12	11-1	11-28	.393	0-0	.000	4-13	.308	10-13	23	2.1	7	9	3	4	26	2.4	152
2012-13																	
Totals	27-16	35-83	.422	0-0	.000	9-21	.429	23-30	53	2.0	13	35	6	11	79	2.9	507

HARTFORD WOMEN'S BASKETBALL

15 MILANA GILBERT

JUNIOR • FORWARD • SMYRNA, DE • 6'0" • INTERNATIONAL



2012-13: Scored her first points of the season in the win over Providence, finishing 1-of-2 and grabbing a rebounds in two minutes.

SEASON/CAREER HIGHS

POINTS

Season 2 vs. Providence (12.1.12)
 Career 8 at Dartmouth (12.12.11)

REBOUNDS

Season 1 vs. Providence (12.1.12)
 Career 10 vs. Albany (2.2.12)

FIELD GOALS

Season 1 vs. Providence (12.1.12)
 Career 3 at Dartmouth (12.12.11)

FIELD GOAL ATTEMPTS

Season 2 vs. Providence (12.1.12)
 Career 6 (2x) last at Dartmouth (12.12.11)

THREE POINT FIELD GOALS

Season -
 Career None

THREE POINT FIELD GOAL ATTEMPTS

Season -
 Career 1 (2x) last at St. John's (12.4.11)

FREE THROWS

Season -
 Career 3 vs. Maine (1.5.11)

FREE THROW ATTEMPTS

Season -
 Career 4 vs. Maine (1.5.11)

ASSISTS

Season -
 Career 3 at Binghamton (1.14.11)

STEALS

Season -
 Career 1 (4x) last at Vermont (2.15.12)

BLOCKS

Season -
 Career 2 at St. John's (12.4.11)

MINUTES

Season 2 (2x) last vs. Providence (12.1.12)
 Career 25 at Dartmouth (12.12.11)

2011-12 GILBERT GAME-BY-GAME

Opponent	GS	Min	FG-FGA	3FG-FGA	FT-FTA	Off	Def	Tot	PF	A	TO	Blk	Stl	Pts
LOYOLA	2		0-1	0-0	0-0	0	0	0	1	0	0	0	0	0
MARIST		Did Not Play												
at Central Conn.		Did Not Play												
RICHMOND		Did Not Play												
at Massachusetts		Did Not Play												
ST. JOHN'S		Did Not Play												
PROVIDENCE	2	1-2	0-0	0-0	0-0	0	1	1	0	0	0	0	0	2
at Vanderbilt														
at Dartmouth														
QUINNIPIAC														
CONNECTICUT														
vs. UMES														
vs. Maryland/Brown														
at Binghamton														
BOSTON UNIV.														
at Maine														
STONY BROOK														
UMBC														
at Albany														
NEW HAMPSHIRE														
at Vermont														
at Boston Univ.														
BINGHAMTON														
at Stony Brook														
MAINE														
ALBANY														
at New Hampshire														
at UMBC														
VERMONT														
Totals	4	1-3	0-0	0-0	0-0	0	1	1	1	0	0	0	0	2

MISCELLANEOUS

2012-13 CAREER

DOUBLE FIGURE SCORING GAMES	-	0
20+ SCORING GAMES	-	0
DOUBLE FIGURE REBOUND GAMES	-	1
5+ ASSIST GAMES	-	0
GAMES WITH DOUBLE DOUBLE	-	0
GAMES LED TEAM IN SCORING	-	0
GAMES LED TEAM IN REBOUNDING	-	4
GAMES LED TEAM IN ASSISTS	-	1
GAMES LED TEAM IN STEALS	-	1
GAMES LED TEAM IN BLOCKS	-	6

GILBERT CAREER STATISTICS

Year	G-GS	FGM-A	PCT	3FGM-A	PCT	FT-A	PCT	OR-DR	TOT	AVG	A	TO	B	S	PTS	AVG	MIN
2010-11	18-0	9-19	.474	0-1	.000	6-10	.600	3-16	19	1.1	1	6	1	0	24	1.3	105
2011-12	27-1	17-53	.321	0-1	.000	7-14	.500	28-54	82	3.0	18	22	8	5	41	1.5	284
2012-13	2-0	1-3	.333	0-0	.000	0-0	.000	0-1	1	0.5	0	0	0	0	2	1.0	4
Totals	47-1	27-75	.360	0-2	.000	13-24	.542	31-71	102	2.2	19	28	9	5	67	1.4	393

GILBERT CAREER AMERICA EAST STATISTICS

Year	G-GS	FGM-A	PCT	3FGM-A	PCT	FT-A	PCT	OR-DR	TOT	AVG	A	TO	B	S	PTS	AVG	MIN
2010-11	5-0	1-2	.500	0-0	.000	4-6	.667	1-0	1	0.2	0	0	0	0	6	1.2	17
2011-12	12-0	5-15	.333	0-0	.000	2-4	.500	7-21	28	2.3	8	8	2	3	12	1.0	110
2012-13																	
Totals	17-0	6-17	.353	0-0	.000	6-10	.600	8-21	29	1.7	8	8	2	3	18	1.1	127

HARTFORD WOMEN'S BASKETBALL



21 SHANISE BULTRON

SOPHOMORE • GUARD • WATERTOWN, MA • 5'8" • UNDECIDED

2012-13: Scored her first points of the season on a pair of three pointers against Marist, finishing with six points in eight minutes ... finished with season-high eight points on 3-of-5 shooting, including 2-of-3 from outside the arc, in the win over Providence.

SEASON/CAREER HIGHS

POINTS

Season 8 vs. Providence (12.1.12)
Career 10 vs. Albany (1.2.12)

REBOUNDS

Season 3 vs. Providence (12.1.12)
Career 3 (3x) last vs. Providence (12.1.12)

FIELD GOALS

Season 3 vs. Providence (12.1.12)
Career 3 (2x) last vs. Providence (12.1.12)

FIELD GOAL ATTEMPTS

Season 5 vs. Providence (12.1.12)
Career 7 (2x) last vs. Albany (1.2.12)

THREE POINT FIELD GOALS

Season 2 (2x) last vs. Providence (12.1.12)
Career 3 vs. Albany (1.2.12)

THREE POINT FIELD GOAL ATTEMPTS

Season 3 vs. Providence (12.1.12)
Career 7 (2x) last vs. Albany (1.2.12)

FREE THROWS

Season -
Career 1 (2x) last vs. Albany (1.2.12)

FREE THROW ATTEMPTS

Season -
Career 2 (2x) last vs. Albany (1.2.12)

ASSISTS

Season 2 vs. St. John's (11.25.12)
Career 3 (4x) last at New Hampshire (1.5.12)

STEALS

Season 1 (3x) last vs. Providence (12.1.12)
Career 3 at Marist (12.1.11)

BLOCKS

Season -
Career 1 at New Hampshire (1.5.12)

MINUTES

Season 17 vs. Providence (12.1.12)
Career 26 vs. Albany (1.2.12)

2012-13 BULTRON GAME-BY-GAME

Opponent	GS	Min	FG-FGA	3FG-FGA	FT-FTA	Off	Def	Tot	PF	A	TO	Blk	Stl	Pts
LOYOLA	9		0-1	0-1	0-0	0	1	1	0	0	1	0	1	0
MARIST	8		2-2	2-2	0-0	0	0	0	0	1	1	0	0	6
at Central Conn.	10		0-3	0-3	0-0	1	0	1	1	0	1	0	0	0
RICHMOND	13		1-1	1-1	0-0	0	1	1	1	1	0	0	0	3
at Massachusetts	4		1-1	0-0	0-0	0	1	1	0	0	0	0	1	2
ST. JOHN'S	11		0-2	0-2	0-0	0	0	0	0	2	0	0	0	0
PROVIDENCE	17		3-5	2-3	0-0	1	2	3	1	0	1	0	1	8
at Vanderbilt														
at Dartmouth														
QUINNIPIAC														
CONNECTICUT														
vs. UMES														
vs. Maryland/Brown														
at Binghamton														
BOSTON UNIV.														
at Maine														
STONY BROOK														
UMBC														
at Albany														
NEW HAMPSHIRE														
at Vermont														
at Boston Univ.														
BINGHAMTON														
at Stony Brook														
MAINE														
ALBANY														
at New Hampshire														
at UMBC														
VERMONT														
Totals	72		7-15	5-12	0-0	2	5	7	3	4	4	0	3	19

MISCELLANEOUS

2012-13 CAREER

DOUBLE FIGURE SCORING GAMES	-	1
20+ SCORING GAMES	-	0
DOUBLE FIGURE REBOUND GAMES	-	0
5+ ASSIST GAMES	-	0
GAMES WITH DOUBLE DOUBLE	-	0
GAMES LED TEAM IN SCORING	-	1
GAMES LED TEAM IN REBOUNDING	-	0
GAMES LED TEAM IN ASSISTS	-	2
GAMES LED TEAM IN STEALS	-	3
GAMES LED TEAM IN BLOCKS	-	1

BULTRON CAREER STATISTICS

Year	G-GS	FGM-A	PCT	3FGM-A	PCT	FT-A	PCT	OR-DR	TOT	AVG	A	TO	B	S	PTS	AVG	MIN
2011-12	23-2	18-63	.286	15-51	.294	2-4	.500	5-22	27	1.2	17	19	1	15	53	2.3	301
2012-13	7-0	7-15	.467	5-12	.417	0-0	.000	2-5	7	1.0	4	4	0	3	19	2.7	72
Totals	30-2	25-78	.321	20-63	.317	2-4	.500	7-27	34	1.1	21	23	1	18	72	2.4	373

BULTRON CAREER AMERICA EAST STATISTICS

Year	G-GS	FGM-A	PCT	3FGM-A	PCT	FT-A	PCT	OR-DR	TOT	AVG	A	TO	B	S	PTS	AVG	MIN
2011-12	8-2	7-18	.389	5-14	.357	1-2	.500	3-5	8	1.0	7	8	1	5	20	2.5	102
2012-13																	
Totals	8-2	7-18	.389	5-14	.357	1-2	.500	3-5	8	1.0	7	8	1	5	20	2.5	102

HARTFORD WOMEN'S BASKETBALL



22 KATIE ROTH

R-FRESHMAN • FORWARD • CASTLETON, NY • 6'2" • COMMUNICATION

2012-13: Finished with seven points, a team-high six rebounds and three steals in the home opener, her first collegiate start, against Loyola ... combined for eight points and seven rebounds in the home win over Marist ... led the team for the second time this season in rebounding with a season-high for all players of nine in the home win over Richmond ... broke the double digit barrier for the first time leading the team with 17 points on 6-of-7 shooting and 5-of-8 at the line in the road win at UMass ... led the team for the third time with seven rebounds in the first

loss of the season against St. John's.

SEASON/CAREER HIGHS

POINTS

Season 17 at UMass (11.21.12)
Career 17 at UMass (11.21.12)

REBOUNDS

Season 9 vs. Richmond (11.18.12)
Career 9 vs. Richmond (11.18.12)

FIELD GOALS

Season 6 at UMass (11.21.12)
Career 6 at UMass (11.21.12)

FIELD GOAL ATTEMPTS

Season 7 (3x) last at UMass (11.21.12)
Career 7 (3x) last at UMass (11.21.12)

THREE POINT FIELD GOALS

Season 1 vs. Marist (11.13.12)
Career 1 vs. Marist (11.13.12)

THREE POINT FIELD GOAL ATTEMPTS

Season 2 vs. Loyola (11.9.12)
Career 2 vs. Loyola (11.9.12)

FREE THROWS

Season 5 at UMass (11.21.12)
Career 5 at UMass (11.21.12)

FREE THROW ATTEMPTS

Season 8 at UMass (11.21.12)
Career 8 at UMass (11.21.12)

ASSISTS

Season 2 (2x) last vs. Providence (12.1.12)
Career 2 (2x) last vs. Providence (12.1.12)

STEALS

Season 3 vs. Marist (11.9.12)
Career 3 vs. Marist (11.9.12)

BLOCKS

Season 2 at UMass (11.21.12)
Career 2 at UMass (11.21.12)

MINUTES

Season 25 vs. Providence (12.1.12)
Career 25 vs. Providence (12.1.12)

2012-13 ROTH GAME-BY-GAME

Opponent	GS	Min	FG-FGA	3FG-FGA	FT-FTA	Off	Def	Tot	PF	A	TO	Blk	Stl	Pts
LOYOLA	*	21	3-7	0-2	1-2	1	5	6	2	0	6	0	3	7
MARIST	*	24	3-6	1-1	1-2	3	4	7	2	1	3	1	0	8
at Central Conn.	*	16	0-3	0-0	2-2	2	1	3	3	0	1	0	1	2
RICHMOND	*	24	3-7	0-0	0-3	3	6	9	0	2	1	0	1	6
at Massachusetts	*	22	6-7	0-0	5-8	1	3	4	2	0	3	2	0	17
ST. JOHN'S	*	21	1-6	0-1	0-0	0	7	7	1	0	1	0	0	2
PROVIDENCE	*	25	2-4	0-1	2-2	1	1	2	0	2	1	1	0	6
at Vanderbilt														
at Dartmouth														
QUINNIPIAC														
CONNECTICUT														
vs. UMES														
vs. Maryland/Brown														
at Binghamton														
BOSTON UNIV.														
at Maine														
STONY BROOK														
UMBC														
at Albany														
NEW HAMPSHIRE														
at Vermont														
at Boston Univ.														
BINGHAMTON														
at Stony Brook														
MAINE														
ALBANY														
at New Hampshire														
at UMBC														
VERMONT														
Totals	7	153	18-40	1-5	11-19	11	27	38	10	5	16	4	5	48

MISCELLANEOUS

2012-13 CAREER

DOUBLE FIGURE SCORING GAMES	1	1
20+ SCORING GAMES	-	0
DOUBLE FIGURE REBOUND GAMES	-	0
5+ ASSIST GAMES	-	0
GAMES WITH DOUBLE DOUBLE	-	0
GAMES LED TEAM IN SCORING	1	1
GAMES LED TEAM IN REBOUNDING	3	3
GAMES LED TEAM IN ASSISTS	-	0
GAMES LED TEAM IN STEALS	-	0
GAMES LED TEAM IN BLOCKS	3	3

ROTH CAREER STATISTICS

Year	G-GS	FGM-A	PCT	3FGM-A	PCT	FT-A	PCT	OR-DR	TOT	AVG	A	TO	B	S	PTS	AVG	MIN
2012-13	7-7	18-40	.450	1-5	.200	11-19	.579	11-27	38	5.4	5	16	4	5	48	6.9	153
Totals	7-7	18-40	.450	1-5	.200	11-19	.579	11-27	38	5.4	5	16	4	5	48	6.9	153

ROTH CAREER AMERICA EAST STATISTICS

Year	G-GS	FGM-A	PCT	3FGM-A	PCT	FT-A	PCT	OR-DR	TOT	AVG	A	TO	B	S	PTS	AVG	MIN
2012-13																	
Totals																	

HARTFORD WOMEN'S BASKETBALL



23 ALYSSA ENGLERT

JUNIOR • GUARD • DANVILLE, NY • 5'9" • PHYSICAL THERAPY

2012-13: Finished the season opener against Loyola one assist shy of tying her career high with six, while tying her career high with eight points, three rebounds and two steals ... tied her career-high for the second-straight game going 3-of-5 from the field to go along with four assists and two steals against Marist ... led the Hawks for the second time this season in assists with six, while grabbing four rebounds, in the home win over Richmond ... finished with a career-high nine points on 3-of-5 shooting in the road win at UMass.

SEASON/CAREER HIGHS

POINTS

Season 8 (2x) last vs. Marist (11.13.12)
 Career 8 (4x) last vs. Marist (11.13.12)

REBOUNDS

Season 4 (2x) last at UMass (11.21.12)
 Career 5 vs. Manhattan (11.11.11)

FIELD GOALS

Season 3 (2x) last at Marist (11.13.12)
 Career 3 (4x) last at Marist (11.13.12)

FIELD GOAL ATTEMPTS

Season 6 vs. Richmond (11.18.12)
 Career 8 vs. Long Island (11.13.11)

THREE POINT FIELD GOALS

Season 1 at UMass (11.21.12)
 Career 2 vs. Dartmouth (12.12.10)

THREE POINT FIELD GOAL ATTEMPTS

Season 2 (3x) last vs. St. John's (11.25.12)
 Career 5 at Boston College (11.15.10)

FREE THROWS

Season 2 (4x) last at UMass (11.21.12)
 Career 4 at St. John's (12.4.11)

FREE THROW ATTEMPTS

Season 2 (4x) last at UMass (11.21.12)
 Career 4 (3x) last at Providence (12.31.11)

ASSISTS

Season 6 (2x) last vs. Richmond (11.18.12)
 Career 7 at Richmond (12.22.11)

STEALS

Season 2 (2x) last vs. Marist (11.13.12)
 Career 2 (6x) last vs. Marist (11.13.12)

BLOCKS

Season 1 vs. Marist (11.13.12)
 Career 1 (2x) last vs. Marist (11.13.12)

MINUTES

Season 31 vs. Richmond (11.18.12)
 Career 33 vs. Harvard (12.29.11)

2012-13 ENGLERT GAME-BY-GAME

Opponent	GS	Min	FG-FGA	3FG-FGA	FT-FTA	Off	Def	Tot	PF	A	TO	Blk	Stl	Pts
LOYOLA	*	27	3-4	0-1	2-2	1	2	3	1	6	1	0	2	8
MARIST	*	28	3-5	0-1	2-2	0	1	1	0	4	3	1	2	8
at Central Conn.	*	21	1-3	0-1	2-2	0	0	0	1	1	4	0	0	4
RICHMOND	*	31	1-6	0-2	0-0	2	2	4	2	6	2	0	0	2
at Massachusetts	*	30	2-4	1-2	2-2	2	2	4	2	2	0	0	1	7
ST. JOHN'S	*	26	1-5	1-2	0-0	1	2	3	3	4	3	0	1	3
PROVIDENCE	*	26	0-4	0-3	1-2	0	2	2	2	3	2	0	2	1
at Vanderbilt														
at Dartmouth														
QUINNIPIAC														
CONNECTICUT														
vs. UMES														
vs. Maryland/Brown														
at Binghamton														
BOSTON UNIV.														
at Maine														
STONY BROOK														
UMBC														
at Albany														
NEW HAMPSHIRE														
at Vermont														
at Boston Univ.														
BINGHAMTON														
at Stony Brook														
MAINE														
ALBANY														
at New Hampshire														
at UMBC														
VERMONT														
Totals	7	189	11-31	2-12	9-10	6	11	17	11	27	15	1	8	33

MISCELLANEOUS

2012-13 CAREER

DOUBLE FIGURE SCORING GAMES	-	0
20+ SCORING GAMES	-	0
DOUBLE FIGURE REBOUND GAMES	-	0
5+ ASSIST GAMES	1	6
GAMES WITH DOUBLE DOUBLE	-	0
GAMES LED TEAM IN SCORING	-	0
GAMES LED TEAM IN REBOUNDING	-	0
GAMES LED TEAM IN ASSISTS	2	14
GAMES LED TEAM IN STEALS	-	3
GAMES LED TEAM IN BLOCKS	-	1

ENGLERT CAREER STATISTICS

Year	G-GS	FGM-A	PCT	3FGM-A	PCT	FT-A	PCT	OR-DR	TOT	AVG	A	TO	B	S	PTS	AVG	MIN
2010-11	31-0	18-44	.409	5-22	.227	11-16	.688	6-22	28	0.9	29	43	0	8	52	1.7	343
2011-12	26-7	24-72	.333	8-21	.381	17-21	.810	10-34	44	1.7	64	46	1	18	73	2.8	526
2012-13	7-7	11-31	.355	2-12	.167	9-10	.900	6-11	17	2.4	27	15	1	8	33	4.7	189
Totals	64-14	53-147	.361	15-55	.273	37-47	.787	22-67	89	1.4	120	104	2	34	158	2.5	1,058

ENGLERT CAREER AMERICA EAST STATISTICS

Year	G-GS	FGM-A	PCT	3FGM-A	PCT	FT-A	PCT	OR-DR	TOT	AVG	A	TO	B	S	PTS	AVG	MIN
2010-11	14-0	6-14	.429	0-6	.000	7-8	.875	1-14	15	1.1	10	11	0	1	19	1.4	149
2011-12	14-3	8-27	.296	3-8	.375	8-9	.889	7-14	21	1.5	22	20	1	7	27	1.9	239
2012-13																	
Totals	28-3	14-41	.341	3-14	.214	15-17	.882	8-28	36	1.3	32	31	1	8	46	1.6	388

HARTFORD WOMEN'S BASKETBALL



24 RUTHANNE DOHERTY

SENIOR • FORWARD • RICHMOND, VA • 5'11" • BIOMEDICAL ENGINEERING

2012-13: Led the Hawks with 14 points and eight rebounds in the home win over Marist ... finished with 13 points (6-of-11 shooting), six rebounds and three steals in the road win at CCSU.

SEASON/CAREER HIGHS

POINTS	
Season	14 vs. Marist (11.13.12)
Career	23 vs. Stony Brook (1.26.11)
REBOUNDS	
Season	8 vs. Marist (11.13.12)
Career	14 vs. Coppin State (12.21.09)
FIELD GOALS	
Season	6 (2x) last at CCSU (11.16.12)
Career	9 (2x) last vs. New Hampshire (2.26.11)
FIELD GOAL ATTEMPTS	
Season	13 vs. Marist (11.13.12)
Career	20 at Marist (12.1.11)
THREE POINT FIELD GOALS	
Season	-
Career	1 (2x) last vs. Albany (1.2.12)
THREE POINT FIELD GOAL ATTEMPTS	
Season	-
Career	2 vs. Maine (1.18.10)
FREE THROWS	
Season	2 (2x) last vs. Marist (11.13.12)
Career	7 (2x) at Maine (2.15.12)
FREE THROW ATTEMPTS	
Season	2 (3x) last vs. St. John's (11.25.12)
Career	15 vs. Boston University (2.13.11)
ASSISTS	
Season	2 (2x) last vs. Providence (12.1.12)
Career	4 (4x) last vs. Stony Brook (1.25.12)
STEALS	
Season	3 at CCSU (11.16.12)
Career	6 at Maine (2.15.12)
BLOCKS	
Season	-
Career	1 (11x) last vs. Binghamton (2.11.12)
MINUTES	
Season	30 vs. Marist (11.13.12)
Career	38 at UMBC (2.2.11)

2012-13 DOHERTY GAME-BY-GAME

Opponent	GS	Min	FG-FGA	3FG-FGA	FT-FTA	Off	Def	Tot	PF	A	TO	Blk	Stl	Pts
LOYOLA	*	23	1-6	0-0	2-2	4	1	5	3	1	3	0	1	4
MARIST	*	30	6-13	0-0	2-2	1	7	8	2	1	1	0	1	14
at Central Conn.	*	22	6-11	0-0	1-1	5	1	6	3	1	3	0	3	13
RICHMOND	*	25	4-9	0-0	0-0	2	0	2	2	1	3	0	1	8
at Massachusetts	*	26	4-8	0-0	1-2	3	0	3	2	1	5	0	2	9
ST. JOHN'S	*	28	5-9	0-0	1-2	3	1	4	1	2	3	0	2	11
PROVIDENCE	*	19	1-3	0-0	1-2	1	5	6	0	2	0	0	0	3
at Vanderbilt														
at Dartmouth														
QUINNIPIAC														
CONNECTICUT														
vs. UMES														
vs. Maryland/Brown														
at Binghamton														
BOSTON UNIV.														
at Maine														
STONY BROOK														
UMBC														
at Albany														
NEW HAMPSHIRE														
at Vermont														
at Boston Univ.														
BINGHAMTON														
at Stony Brook														
MAINE														
ALBANY														
at New Hampshire														
at UMBC														
VERMONT														
Totals	7	173	27-59	0-0	8-11	19	15	34	13	9	18	0	10	62

MISCELLANEOUS

	2012-13	CAREER
DOUBLE FIGURE SCORING GAMES	3	43
20+ SCORING GAMES	-	1
DOUBLE FIGURE REBOUND GAMES	-	16
5+ ASSIST GAMES	-	0
GAMES WITH DOUBLE DOUBLE	-	12
GAMES LED TEAM IN SCORING	1	19
GAMES LED TEAM IN REBOUNDING	3	36
GAMES LED TEAM IN ASSISTS	-	10
GAMES LED TEAM IN STEALS	2	37
GAMES LED TEAM IN BLOCKS	-	9

DOHERTY CAREER STATISTICS

Year	G-GS	FGM-A	PCT	3FGM-A	PCT	FT-A	PCT	OR-DR	TOT	AVG	A	TO	B	S	PTS	AVG	MIN
2009-10	32-21	86-179	.480	1-8	.125	19-39	.487	56-99	155	4.8	24	47	4	38	192	6.0	664
2010-11	31-21	96-214	.449	0-1	.000	44-80	.550	71-112	183	5.9	43	62	3	31	236	7.6	743
2011-12	30-29	154-345	.446	1-3	.333	74-115	.643	93-104	197	6.6	57	90	4	60	383	12.8	858
2012-13	7-7	27-59	.458	0-0	.000	8-11	.727	19-15	34	4.9	9	18	0	10	62	8.9	173
Totals	100-78	363-797	.455	2-12	.167	145-245	.592	239-330	569	5.7	133	217	11	139	873	8.7	2,438

DOHERTY CAREER AMERICA EAST STATISTICS

Year	G-GS	FGM-A	PCT	3FGM-A	PCT	FT-A	PCT	OR-DR	TOT	AVG	A	TO	B	S	PTS	AVG	MIN
2009-10	16-15	53-101	.525	1-6	.167	10-21	.476	33-52	85	5.3	11	23	1	19	117	7.3	365
2010-11	15-12	61-123	.496	0-0	.000	30-56	.536	34-70	104	6.9	33	34	2	14	152	10.1	405
2011-12	16-15	79-180	.439	1-1	1.000	33-51	.647	43-51	94	5.9	33	46	4	34	192	12.0	450
2012-13																	
Totals	47-42	193-404	.478	2-7	.286	73-128	.570	110-173	283	6.0	77	103	7	67	461	9.8	1,220

HARTFORD WOMEN'S BASKETBALL



25 AMBER BEPKO

SOPHOMORE • GUARD • GUILFORD, CT • 5'9" • COMMUNICATION

2012-13: Opened up the season with 12 points, her sixth career game in double figures, on 4-of-7 shooting against Loyola ... finished one point shy of her career high with her second game of the season in double figures leading the team with 17 points on 5-of-8 shooting, including 3-of-4 from beyond the arc and 4-of-6 at the line against CCSU ... led the team for the second-straight game with 16 points on 5-of-9 shooting, including 4-of-7 from outside the arc, to go along with six rebounds in the home win over Richmond.

SEASON/CAREER HIGHS

POINTS

Season 17 at CCSU (11.16.12)
 Career 18 vs. UMBC (2.19.12)

REBOUNDS

Season 6 vs. Richmond (11.18.12)
 Career 8 vs. TCU (11.25.11)

FIELD GOALS

Season 5 (2x) last vs. Richmond (11.18.12)
 Career 7 vs. UMBC (2.19.12)

FIELD GOAL ATTEMPTS

Season 9 2x last vs. St. John's (11.25.12)
 Career 15 vs. UMBC (2.19.12)

THREE POINT FIELD GOALS

Season 4 vs. Richmond (11.18.12)
 Career 4 (2x) last vs. Richmond (11.18.12)

THREE POINT FIELD GOAL ATTEMPTS

Season 7 vs. Richmond (11.18.12)
 Career 9 vs. UMBC (2.19.12)

FREE THROWS

Season 8 at UMass (11.21.12)
 Career 8 at UMass (11.21.12)

FREE THROW ATTEMPTS

Season 9 at UMass (11.21.12)
 Career 9 at UMass (11.21.12)

ASSISTS

Season 3 (2x) last at UMass (11.21.12)
 Career 6 vs. Manhattan (11.11.11)

STEALS

Season 4 (2x) last at UMass (11.21.12)
 Career 8 (2x) last vs. Vermont (2.5.12)

BLOCKS

Season -
 Career 1 (4x) last vs. Binghamton (3.2.12)

MINUTES

Season 37 at CCSU (11.16.12)
 Career 38 vs. UMBC (2.19.12)

2012-13 BEPKO GAME-BY-GAME

Opponent	GS	Min	FG-FGA	3FG-FGA	FT-FTA	Off	Def	Tot	PF	A	TO	Blk	Stl	Pts
LOYOLA	*	25	4-7	2-5	2-4	1	2	3	1	3	1	0	2	12
MARIST	*	26	0-4	0-4	1-2	0	1	1	3	2	2	0	4	1
at Central Conn.	*	37	5-8	3-4	4-6	1	3	4	2	1	4	0	2	17
RICHMOND	*	31	5-9	4-7	2-5	1	5	6	3	0	0	0	2	16
at Massachusetts	*	32	0-5	0-5	8-9	0	4	4	1	3	1	0	4	8
ST. JOHN'S	*	27	4-9	2-6	1-2	0	1	1	5	2	1	0	2	11
PROVIDENCE	*	21	3-8	2-4	0-0	1	4	5	1	0	3	0	3	8
at Vanderbilt														
at Dartmouth														
QUINNIPIAC														
CONNECTICUT														
vs. UMass														
vs. Maryland/Brown														
at Binghamton														
BOSTON UNIV.														
at Maine														
STONY BROOK														
UMBC														
at Albany														
NEW HAMPSHIRE														
at Vermont														
at Boston Univ.														
BINGHAMTON														
at Stony Brook														
MAINE														
ALBANY														
at New Hampshire														
at UMBC														
VERMONT														
Totals	7	199	21-50	13-35	18-28	4	20	24	16	11	12	0	19	73

MISCELLANEOUS

2012-13 CAREER

DOUBLE FIGURE SCORING GAMES	4	9
20+ SCORING GAMES	-	0
DOUBLE FIGURE REBOUND GAMES	-	0
5+ ASSIST GAMES	-	1
GAMES WITH DOUBLE DOUBLE	-	0
GAMES LED TEAM IN SCORING	2	4
GAMES LED TEAM IN REBOUNDING	-	1
GAMES LED TEAM IN ASSISTS	-	3
GAMES LED TEAM IN STEALS	4	14
GAMES LED TEAM IN BLOCKS	-	2

BEPKO CAREER STATISTICS

Year	G-GS	FGM-A	PCT	3FGM-A	PCT	FT-A	PCT	OR-DR	TOT	AVG	A	TO	B	S	PTS	AVG	MIN
2011-12	31-30	62-193	.321	18-80	.225	39-53	.736	32-73	105	3.4	32	37	4	54	181	5.8	789
2012-13	7-7	21-50	.420	13-35	.371	18-28	.643	4-20	24	3.4	11	12	0	19	73	10.4	799
Totals	38-37	83-243	.342	31-115	.270	57-81	.704	36-93	129	3.4	43	49	4	73	254	6.7	985

BEPKO CAREER AMERICA EAST STATISTICS

Year	G-GS	FGM-A	PCT	3FGM-A	PCT	FT-A	PCT	OR-DR	TOT	AVG	A	TO	B	S	PTS	AVG	MIN
2011-12	15-14	29-94	.309	8-39	.205	22-28	.786	20-31	51	3.4	20	19	1	31	88	5.9	398
2012-13																	
Totals	15-14	29-94	.309	8-39	.205	22-28	.786	20-31	51	3.4	20	19	1	31	88	5.9	398

HARTFORD WOMEN'S BASKETBALL



31 CHERELLE MOORE

SOPHOMORE • FORWARD • BRIDGEPORT, CT • 6'0" • LIBERAL STUDIES

2012-13:

SEASON/CAREER HIGHS

POINTS

Season 4 vs. Loyola (11.9.12)
 Career 12 (2x) last vs. Stony Brook (1.25.12)

REBOUNDS

Season 2 (3x) last vs. St. John's (11.25.12)
 Career 9 vs. Vermont (1.7.12)

FIELD GOALS

Season 2 vs. Loyola (11.9.12)
 Career 6 (2x) last vs. Stony Brook (1.25.12)

FIELD GOAL ATTEMPTS

Season 8 vs. St. John's (11.25.12)
 Career 11 vs. Stony Brook (1.25.12)

THREE POINT FIELD GOALS

Season -
 Career 1 (2x) last at Notre Dame (11.17.11)

THREE POINT FIELD GOAL ATTEMPTS

Season -
 Career 4 vs. CCSU (11.22.11)

FREE THROWS

Season 3 vs. St. John's (11.25.12)
 Career 3 (2x) last vs. St. John's (11.25.12)

FREE THROW ATTEMPTS

Season 4 vs. St. John's (11.25.12)
 Career 5 vs. Vermont (1.7.12)

ASSISTS

Season 1 (2x) last vs. St. John's (11.25.12)
 Career 2 (2x) last at Maine (2.15.12)

STEALS

Season 1 vs. St. John's (11.25.12)
 Career 3 at Maine (2.15.12)

BLOCKS

Season -
 Career 1 (3x) last at UMBC (1.18.12)

MINUTES

Season 17 vs. St. John's (11.25.12)
 Career 23 (2x) last vs. Stony Brook (1.25.12)

2012-13 MOORE GAME-BY-GAME

Opponent	GS	Min	FG-FGA	3FG-FGA	FT-FTA	Off	Def	Tot	PF	A	TO	Blk	Stl	Pts
LOYOLA	15		2-4	0-0	0-0	1	1	2	2	0	3	0	0	4
MARIST	7		0-2	0-0	0-0	0	2	2	1	0	0	0	0	0
at Central Conn.	6		0-2	0-0	0-0	0	0	0	0	1	0	0	0	0
RICHMOND	3		0-0	0-0	0-0	0	0	0	0	0	1	0	0	0
at Massachusetts	5		0-1	0-0	0-0	0	0	0	0	0	0	0	0	0
ST. JOHN'S	17		0-8	0-0	3-4	1	1	2	1	1	1	0	1	3
PROVIDENCE	3		0-0	0-0	0-0	0	0	0	1	0	2	0	0	0
at Vanderbilt														
at Dartmouth														
QUINNIPIAC														
CONNECTICUT														
vs. UMES														
vs. Maryland/Brown														
at Binghamton														
BOSTON UNIV.														
at Maine														
STONY BROOK														
UMBC														
at Albany														
NEW HAMPSHIRE														
at Vermont														
at Boston Univ.														
BINGHAMTON														
at Stony Brook														
MAINE														
ALBANY														
at New Hampshire														
at UMBC														
VERMONT														
Totals	56		2-17	0-0	3-4	2	4	6	5	2	7	0	1	7

MISCELLANEOUS

2012-13 CAREER

DOUBLE FIGURE SCORING GAMES	-	2
20+ SCORING GAMES	-	0
DOUBLE FIGURE REBOUND GAMES	-	0
5+ ASSIST GAMES	-	0
GAMES WITH DOUBLE DOUBLE	-	0
GAMES LED TEAM IN SCORING	-	0
GAMES LED TEAM IN REBOUNDING	-	2
GAMES LED TEAM IN ASSISTS	-	0
GAMES LED TEAM IN STEALS	-	0
GAMES LED TEAM IN BLOCKS	-	1

MOORE CAREER STATISTICS

Year	G-GS	FGM-A	PCT	3FGM-A	PCT	FT-A	PCT	OR-DR	TOT	AVG	A	TO	B	S	PTS	AVG	MIN
2011-12	31-1	55-156	.353	2-16	.125	14-24	.583	20-39	59	1.9	13	28	3	19	126	4.1	410
2012-13	7-0	2-17	.118	0-0	.000	3-4	.750	2-4	6	0.9	2	7	0	1	7	1.0	56
Totals	38-1	57-173	.329	2-16	.125	17-28	.607	22-43	65	1.7	15	35	3	20	133	3.5	466

MOORE CAREER AMERICA EAST STATISTICS

Year	G-GS	FGM-A	PCT	3FGM-A	PCT	FT-A	PCT	OR-DR	TOT	AVG	A	TO	B	S	PTS	AVG	MIN
2011-12	15-0	28-75	.373	0-1	.000	9-16	.563	15-21	36	2.4	9	12	1	9	65	4.3	212
2012-13																	
Totals	15-0	28-75	.373	0-1	.000	9-16	.563	15-21	36	2.4	9	12	1	9	65	4.3	212

HARTFORD WOMEN'S BASKETBALL



33 MALLORY SHICKORA

FRESHMAN • GUARD • LITTLE FALLS, NJ • 5'8" • MARKETING

2012-13: Saw her first minutes as a collegiate player against St. John's ... scored her first college buckets on a layup and three pointer, finishing with five points in the home win over Providence.

SEASON/CAREER HIGHS

POINTS

Season 5 vs. Providence (12.1.12)
 Career 5 vs. Providence (12.1.12)

REBOUNDS

Season -
 Career -

FIELD GOALS

Season 2 vs. Providence (12.1.12)
 Career 2 vs. Providence (12.1.12)

FIELD GOAL ATTEMPTS

Season 3 vs. Providence (12.1.12)
 Career 3 vs. Providence (12.1.12)

THREE POINT FIELD GOALS

Season 1 vs. Providence (12.1.12)
 Career 1 vs. Providence (12.1.12)

THREE POINT FIELD GOAL ATTEMPTS

Season 1 vs. Providence (12.1.12)
 Career 1 vs. Providence (12.1.12)

FREE THROWS

Season -
 Career -

FREE THROW ATTEMPTS

Season -
 Career -

ASSISTS

Season 1 vs. Providence (12.1.12)
 Career 1 vs. Providence (12.1.12)

STEALS

Season 1 vs. Providence (12.1.12)
 Career 1 vs. Providence (12.1.12)

BLOCKS

Season -
 Career -

MINUTES

Season 12 vs. Providence (12.1.12)
 Career 12 vs. Providence (12.1.12)

2012-13 SHICKORA GAME-BY-GAME

Opponent	GS	Min	FG-FGA	3FG-FGA	FT-FTA	Off	Def	Tot	PF	A	TO	Blk	Stl	Pts
LOYOLA		Injured												
MARIST		Injured												
at Central Conn.		Injured												
RICHMOND		Injured												
at Massachusetts		Did Not Play												
ST. JOHN'S	6		0-1	0-0	0-0	0	0	0	0	0	0	0	0	0
PROVIDENCE	12		2-3	1-1	0-0	0	0	0	4	1	3	0	1	5
at Vanderbilt														
at Dartmouth														
QUINNIPIAC														
CONNECTICUT														
vs. UMES														
vs. Maryland/Brown														
at Binghamton														
BOSTON UNIV.														
at Maine														
STONY BROOK														
UMBC														
at Albany														
NEW HAMPSHIRE														
at Vermont														
at Boston Univ.														
BINGHAMTON														
at Stony Brook														
MAINE														
ALBANY														
at New Hampshire														
at UMBC														
VERMONT														
Totals	18		2-4	1-1	0-0	0	0	0	4	1	3	0	1	5

MISCELLANEOUS

2012-13 CAREER

DOUBLE FIGURE SCORING GAMES	-	0
20+ SCORING GAMES	-	0
DOUBLE FIGURE REBOUND GAMES	-	0
5+ ASSIST GAMES	-	0
GAMES WITH DOUBLE DOUBLE	-	0
GAMES LED TEAM IN SCORING	-	0
GAMES LED TEAM IN REBOUNDING	-	0
GAMES LED TEAM IN ASSISTS	-	0
GAMES LED TEAM IN STEALS	-	0
GAMES LED TEAM IN BLOCKS	-	0

SHICKORA CAREER STATISTICS

Year	G-GS	FGM-A	PCT	3FGM-A	PCT	FT-A	PCT	OR-DR	TOT	AVG	A	TO	B	S	PTS	AVG	MIN
2012-13	2-0	2-4	.500	1-1	1.000	0-0	.000	0-0	0	0.0	1	3	0	1	5	2.5	18
Totals	2-0	2-4	.500	1-1	1.000	0-0	.000	0-0	0	0.0	1	3	0	1	5	2.5	18

SHICKORA CAREER AMERICA EAST STATISTICS

Year	G-GS	FGM-A	PCT	3FGM-A	PCT	FT-A	PCT	OR-DR	TOT	AVG	A	TO	B	S	PTS	AVG	MIN
2012-13																	
Totals																	

HARTFORD WOMEN'S BASKETBALL



44 NIKKIA SMITH

SENIOR • FORWARD • MONTVILLE, CT • 6'1" • ELEMENTARY EDUCATION

... led the team in scoring for the second time this season with 6 points on 6-of-12 from the field and a perfect 4-of-4 at the free throw line, to go along with six rebounds, in the home loss to St. John's.

2012-13: finished with 10 points, on 5-of-8 shooting, all in the first half of the season opener against Loyola ... finished with eight points and seven rebounds, adding two assists and two steals, in the home win over Marist ... tied for the team lead with 17 points on 5-of-10 shooting and 7-of-8 at the free throw line to go along with six rebounds, two assists and three steals in the road win at CCSU ... chipped in 10 points, her third game in double figures, in the home win over Richmond ... added 11 points, her fourth game in double digits, in the road win at UMass

SEASON/CAREER HIGHS

POINTS	
Season	17 at CCSU (11.16.12)
Career	25 vs. Harvard (12.29.11)
REBOUNDS	
Season	7 vs. Marist (11.13.12)
Career	9 (3x) last at Stony Brook (2.22.12)
FIELD GOALS	
Season	6 vs. St. John's (11.25.12)
Career	11 vs. Harvard (12.29.11)
FIELD GOAL ATTEMPTS	
Season	12 vs. St. John's (11.25.12)
Career	17 vs. Harvard (12.29.11)
THREE POINT FIELD GOALS	
Season	-
Career	1 (5x) last vs. Binghamton (2.11.12)
THREE POINT FIELD GOAL ATTEMPTS	
Season	1 vs. St. John's (11.25.12)
Career	2 vs. Albany (1.2.12)
FREE THROWS	
Season	7 at CCSU (11.16.12)
Career	8 at Vermont (2.15.12)
FREE THROW ATTEMPTS	
Season	10 at UMass (11.21.12)
Career	11 at Vermont (2.5.12)
ASSISTS	
Season	3 at UMass (11.21.12)
Career	5 at Marist (12.1.11)
STEALS	
Season	3 at CCSU (11.16.12)
Career	5 at Dartmouth (12.12.11)
BLOCKS	
Season	2 vs. Loyola (11.9.12)
Career	3 vs. Albany (1.8.11)
MINUTES	
Season	25 at UMass (11.21.12)
Career	33 vs. BC (12.10.11)

2012-13 SMITH GAME-BY-GAME

Opponent	GS	Min	FG-FGA	3FG-FGA	FT-FTA	Off	Def	Tot	PF	A	TO	Blk	Stl	Pts
LOYOLA	16	5-8	0-0	0-0	2 0 2	2	1	1	2	0	0	0	0	10
MARIST	19	4-7	0-0	0-0	2 5 7	2	2	3	0	2	8			8
at Central Conn.	24	5-10	0-0	7-8	0 6 6	2	2	0	1	3	17			
RICHMOND	21	5-11	0-0	0-0	0 3 3	1	2	1	0	1	10			
at Massachusetts	25	3-8	0-0	5-10	3 3 6	3	3	2	0	0	11			
ST. JOHN'S	23	6-12	0-1	4-4	4 2 6	1	0	0	0	0	16			
PROVIDENCE	12	1-2	0-0	3-4	0 4 4	2	1	1	0	1	5			
at Vanderbilt														
at Dartmouth														
QUINNIPIAC														
CONNECTICUT														
vs. UMES														
vs. Maryland/Brown														
at Binghamton														
BOSTON UNIV.														
at Maine														
STONY BROOK														
UMBC														
at Albany														
NEW HAMPSHIRE														
at Vermont														
at Boston Univ.														
BINGHAMTON														
at Stony Brook														
MAINE														
ALBANY														
at New Hampshire														
at UMBC														
VERMONT														
Totals	140	29-58	0-1	19-26	11 23 34	13	11	8	3	7	77			

MISCELLANEOUS

	2012-13	CAREER
DOUBLE FIGURE SCORING GAMES	5	30
20+ SCORING GAMES	-	2
DOUBLE FIGURE REBOUND GAMES	-	0
5+ ASSIST GAMES	-	1
GAMES WITH DOUBLE DOUBLE	-	0
GAMES LED TEAM IN SCORING	2	13
GAMES LED TEAM IN REBOUNDING	1	16
GAMES LED TEAM IN ASSISTS	-	8
GAMES LED TEAM IN STEALS	1	14
GAMES LED TEAM IN BLOCKS	2	21

SMITH CAREER STATISTICS

Year	G-GS	FGM-A	PCT	3FGM-A	PCT	FT-A	PCT	OR-DR	TOT	AVG	A	TO	B	S	PTS	AVG	MIN
2009-10	23-0	21-48	.438	0-0	.000	10-19	.526	13-27	40	1.7	5	20	5	5	52	2.3	203
2010-11	29-20	83-210	.395	1-2	.500	32-50	.640	47-81	128	4.4	35	40	10	25	199	6.9	689
2011-12	32-31	129-284	.454	4-9	.444	63-77	.818	47-92	139	4.3	46	61	18	32	325	10.2	819
2012-13	7-0	29-58	.500	0-1	.000	19-25	.731	11-23	34	4.9	11	8	3	7	77	11.0	140
Totals	91-51	262-600	.437	5-12	.417	124-172	.721	118-223	341	3.7	97	129	36	69	653	7.2	1,851

SMITH CAREER AMERICA EAST STATISTICS

Year	G-GS	FGM-A	PCT	3FGM-A	PCT	FT-A	PCT	OR-DR	TOT	AVG	A	TO	B	S	PTS	AVG	MIN
2009-10	15-0	13-30	.433	0-0	.000	6-13	.462	8-20	28	1.9	4	12	2	5	32	2.1	141
2010-11	13-4	38-91	.418	0-0	.000	15-25	.600	16-33	49	3.8	15	15	6	11	91	7.0	272
2011-12	16-16	70-152	.461	3-6	.500	42-55	.764	18-53	71	4.4	26	27	10	15	185	11.6	406
2012-13																	
Totals	44-20	121-273	.443	3-6	.500	63-93	.677	42-106	148	3.4	45	54	18	31	308	7.0	819

HARTFORD WOMEN'S BASKETBALL

Hartford vs. Loyola Nov. 9, 2012 • West Hartford, CT

GAME 1

Loyola	FG-FGA	3FG-FGA	FT-FTA	O-D-TOT	TP	A	T	B	S	MIN
Sutherland*	0-3	0-0	0-0	0-3-3	0	1	3	0	1	20
Offodile*	0-1	0-0	2-2	0-1-1	2	0	3	1	2	25
Marshall*	4-8	1-4	5-7	1-0-1	14	1	5	0	2	24
Krusen*	2-8	1-5	0-0	1-2-3	5	0	3	0	1	30
Brown*	0-0	0-0	0-0	0-1-1	0	0	3	0	1	6
Robinson	0-2	0-1	2-4	2-0-2	2	0	2	0	0	5
Padgett	1-1	0-0	0-0	0-0-0	2	0	0	1	0	8
Logan	0-2	0-0	0-0	0-1-1	0	0	2	0	0	14
Sheahin	7-16	2-6	0-1	1-6-7	16	0	4	0	5	31
Butler	1-1	0-0	0-0	0-0-0	2	0	0	0	0	2
Walker	2-4	0-0	0-0	1-0-1	4	0	1	0	0	12
Smith	1-3	0-0	0-0	4-3-7	2	2	0	0	0	17
Perry	0-0	0-0	1-2	1-1-2	1	1	2	0	1	6
Team				5-4-9						

TOTAL	18-49	4-16	10-16	16-22-38	50	5	28	2	13	200
Total FG	1st Half: 9-24	37.5%	2nd Half: 9-25	36.0%	Total: 36.7%					
3-pt. FG	1st Half: 1-6	16.7%	2nd Half: 3-10	30.0%	Total: 25.0%					
F Throw	1st Half: 3-3	100.0%	2nd Half: 7-13	53.8%	Total: 62.5%					

Hartford	FG-FGA	3FG-FGA	FT-FTA	O-D-TOT	TP	A	T	B	S	MIN
Roth*	3-7	0-2	1-2	1-5-6	7	0	6	0	3	21
Doherty*	1-6	0-0	2-2	4-1-5	4	1	3	0	1	23
Elliott*	5-11	2-6	2-2	1-1-2	14	0	2	0	4	23
Englert*	3-4	0-1	2-2	1-2-3	8	6	1	0	2	27
Bepko*	4-7	2-5	2-4	1-2-3	12	3	1	0	2	25
Michals	0-3	0-1	0-0	0-1-1	0	1	2	0	0	16
Hall	2-4	1-2	0-0	0-3-3	5	3	1	0	2	19
Skinner	0-0	0-0	0-0	0-0-0	0	0	0	0	0	4
Gilbert	0-1	0-0	0-0	0-0-0	0	0	0	0	0	2
Bultron	0-1	0-1	0-0	0-1-1	0	0	1	0	1	9
Moore	2-4	0-0	0-0	1-1-2	4	0	3	0	0	15
Smith	5-8	0-0	0-0	2-0-2	10	1	1	2	0	16
Team				0-3-3						

TOTAL	1st	2nd	Total
Loyola	22	28	50
Hartford	36	28	64

Total FG	1st Half: 16-29	55.2%	2nd Half: 9-27	33.3%	Total: 44.6%
3-pt. FG	1st Half: 2-7	28.6%	2nd Half: 3-11	27.3%	Total: 27.8%
F Throw	1st Half: 2-4	50.0%	2nd Half: 7-8	87.5%	Total: 75.0%

Hartford vs. Richmond Nov. 18, 2012 • West Hartford, CT

GAME 4

Richmond	FG-FGA	3FG-FGA	FT-FTA	O-D-TOT	TP	A	T	B	S	MIN
Okoro*	3-5	0-0	4-5	2-5-7	10	1	3	0	0	25
Brown*	6-10	0-0	0-1	1-5-6	12	0	5	2	0	31
Soppe*	2-3	1-2	0-0	0-0-0	5	1	1	0	0	18
King*	2-8	1-1	0-0	0-5-5	5	2	4	1	0	30
Bilney,R*	4-8	3-7	0-0	1-1-2	11	3	2	0	1	31
Powell	0-0	0-0	0-0	0-0-0	0	0	0	0	0	1
Tolson	1-2	0-1	0-0	0-1-1	2	2	3	0	0	12
Bilney,S	0-0	0-0	0-0	0-0-0	0	0	1	0	0	4
Burgess	1-2	0-0	0-0	0-0-0	2	0	0	0	0	3
Dannelly	0-2	0-0	0-0	0-2-2	0	1	0	1	0	21
Wann	2-10	0-2	3-5	4-5-9	7	4	1	0	1	24
Team				1-2-3						

TOTAL	21-50	5-13	7-11	9-26-35	54	14	20	4	2	200
Total FG	1st Half: 9-25	36.0%	2nd Half: 12-25	48.0%	Total: 42.0%					
3-pt. FG	1st Half: 2-5	40.0%	2nd Half: 3-8	37.5%	Total: 38.5%					
F Throw	1st Half: 3-4	75.0%	2nd Half: 4-7	57.1%	Total: 63.6%					

Hartford	FG-FGA	3FG-FGA	FT-FTA	O-D-TOT	TP	A	T	B	S	MIN
Roth*	3-7	0-0	0-3	3-6-9	6	2	1	0	1	24
Doherty*	4-9	0-0	0-0	2-0-2	8	1	3	0	1	25
Elliott*	4-6	1-3	3-6	0-2-2	12	0	0	3	24	
Englert*	1-6	0-2	0-0	2-2-4	2	6	2	0	0	31
Bepko*	5-9	4-7	2-5	1-5-6	16	0	0	2	31	
Michal	0-0	0-0	0-0	1-0-1	0	1	2	1	0	10
Hall	0-3	0-3	2-2	0-1-1	2	0	2	0	0	18
Moore	0-0	0-0	0-0	0-0-0	0	0	1	0	0	3
Smith	5-11	0-0	0-0	0-3-3	10	2	1	0	1	21
Team				0-2-2						

TOTAL	23-52	6-16	7-16	9-22-31	59	13	12	1	8	200
Total FG	1st Half: 11-27	40.7%	2nd Half: 12-25	48.0%	Total: 44.2%					
3-pt. FG	1st Half: 4-10	40.0%	2nd Half: 2-6	33.3%	Total: 37.5%					
F Throw	1st Half: 4-5	80.0%	2nd Half: 3-11	27.3%	Total: 43.8%					

Team	1st	2nd	Total
Richmond	23	31	54
Hartford	30	29	59

Hartford vs. Marist Nov. 13, 2012 • West Hartford, CT

GAME 2

Marist	FG-FGA	3FG-FGA	FT-FTA	O-D-TOT	TP	A	T	B	S	MIN
O'Connor*	2-5	1-2	0-1	0-3-3	5	0	2	1	1	16
Beynonn*	5-12	1-2	2-2	2-4-6	13	0	5	0	1	36
Ockenden*	2-11	0-6	0-0	1-2-3	4	1	3	0	1	35
Dulin*	4-11	1-3	3-3	1-2-3	12	2	3	0	4	27
Best*	0-3	0-2	0-0	1-1-2	0	2	1	0	0	12
Gomez	1-2	0-1	0-0	2-1-3	2	2	2	0	0	27
Coffey	1-1	1-1	0-0	2-0-2	3	2	1	1	0	14
Blais	1-2	1-2	0-0	1-0-1	3	0	1	0	0	9
Danella	5-11	1-5	0-2	2-2-4	11	3	1	1	2	24
Team				4-3-7						

TOTAL	21-58	6-24	5-8	16-18-34	53	12	20	3	9	200
Total FG	1st Half: 11-29	37.9%	2nd Half: 10-29	34.5%	Total: 36.2%					
3-pt. FG	1st Half: 4-13	30.8%	2nd Half: 2-11	18.2%	Total: 25.0%					
F Throw	1st Half: 2-3	66.7%	2nd Half: 3-5	60.0%	Total: 62.5%					

Hartford	FG-FGA	3FG-FGA	FT-FTA	O-D-TOT	TP	A	T	B	S	MIN
Roth*	3-6	1-1	1-2	3-4-7	8	1	3	1	0	24
Doherty*	6-13	0-0	2-2	1-7-8	14	1	1	0	1	30
Elliott*	2-4	1-3	1-2	0-2-2	6	1	0	2	27	
Englert*	3-5	0-1	2-2	0-1-1	8	4	3	1	2	28
Bepko*	0-4	0-4	1-2	0-1-1	1	2	2	0	4	26
Michals	1-1	1-1	0-0	0-0-0	3	1	0	0	0	7
Hall	5-7	0-1	0-0	1-0-1	10	1	2	0	0	24
Bultron	2-2	2-2	0-0	0-0-0	6	1	1	0	0	8
Moore	0-2	0-0	0-0	0-2-2	0	0	0	0	0	7
Smith	4-7	0-0	0-0	2-5-7	8	2	3	0	2	19
Team				1-2-3						

TOTAL	26-51	5-13	7-10	8-24-32	64	14	16	2	11	200
Total FG	1st Half: 12-29	41.4%	2nd Half: 14-22	63.6%	Total: 51.0%					
3-pt. FG	1st Half: 1-7	14.3%	2nd Half: 4-6	66.7%	Total: 38.5%					
F Throw	1st Half: 3-4	75.0%	2nd Half: 4-6	66.7%	Total: 70.0%					

Team	1st	2nd	Total
Marist	28	25	53
Hartford	28	36	64

Total FG	1st Half: 12-29	41.4%	2nd Half: 14-22	63.6%	Total: 51.0%
3-pt. FG	1st Half: 1-7	14.3%	2nd Half: 4-6	66.7%	Total: 38.5%
F Throw	1st Half: 3-4	75.0%	2nd Half: 4-6	66.7%	Total: 70.0%

Hartford at Central Connecticut Nov. 16, 2012 • New Britain, CT

GAME 3

Hartford	FG-FGA	3FG-FGA	FT-FTA	O-D-TOT	TP	A	T	B	S	MIN
Elliott*	2-7	2-7	5-6	1-4-5	11	3	3	0	3	22
Roth*	0-3	0-0	2-2	2-1-3	2	0	1	0	1	16
Englert*	1-3	0-1	2-2	0-0-0	4	1	4	0	0	21
Doherty*	6-11	0-0	1-1	5-1-6	13	1	3	0	3	22
Bepko*	5-8	3-4	4-6	1-3-4	17	1	4	0	2	37
Michals	3-4	0-0	2-2	1-0-1	8	2	1	1	2	19
Hall	2-7	0-1	0-0	0-2-2	4	2	1	0	0	23
Bultron	0-3	0-3	0-0	1-0-1	1	0	1	0	0	10
Moore	0-2	0-0	0-0	0-0-0	0	1	0	0	0	6
Smith	5-10	0-0	7-8	0-6-6	17	2	0	1	3	24
Team				4-4-8						

TOTAL	24-58	5-16	23-27	15-21-36	76	13	18	2	14	200
Total FG	1st Half: 12-33	36.4%	2nd Half: 12-25	48.0%	Total: 41.4%					
3-pt. FG	1st Half: 2-7	28.6%	2nd Half: 3-9	33.3%	Total: 31.3%					
F Throw	1st Half: 8-9	88.9%	2nd Half: 15-18	83.3%	Total: 85.2%					

CCSU	FG-FGA	3FG-FGA	FT-FTA	O-D-TOT	TP	A	T	B	S	MIN
Babe*	6-15	1-4	2-2	0-5-5	15	3	3	0	5	38
Watras*	1-4	0-1	2-2	0-0-0	4	1	2	1	0	21
Babe*	6-8	1-2	2-2	2-6-8	15	3	6	0	3	34
Thomas*	0-2	0-1	2-2	1-1-2	2	0	1	0	0	14
Daamen*	3-5	0-0	0-0	0-1-1	6	0	5	0	0	28
Arbogast	2-9	0-2	4-4	4-5-9	8	1	1	0	0	21
Makins	0-1	0-0	0-2	0-0-0	0	0	1	0	1	11
Harrington	4-6	0-0	1-2	2-1-3	9	1	1	0	0	18
Ferguson	1-3	1-2	0-0	0-0-0	3	2	1	0	0	11
Fisher	0-0	0-0	0-0	0-0-0	0	0	1	0	0	4
Team				1-3-4						

TOTAL	23-53	3-12	13-16	10-22-32	62	11	23	1	9	200
Total FG	1st Half: 1									

HARTFORD WOMEN'S BASKETBALL

Hartford vs. Providence Dec. 1, 2012 • West Hartford, CT

GAME 7

Providence	FG-FGA	3FG-FGA	FT-FTA	O-D-TOT	TP	A	T	B	S	MIN
Baldwin*	4-10	0-0	0-0	1-5-6	8	0	0	2	2	32
liskola*	2-6	0-0	0-0	2-2-4	4	0	4	0	0	39
Edward*	1-3	0-0	0-0	0-1-1	2	0	2	0	0	18
Roberts*	4-12	0-1	2-2	0-4-4	10	3	1	0	5	39
Rule*	0-9	0-2	6-8	0-2-2	6	2	2	0	0	32
Roncarati	0-0	0-0	0-0	0-0-0	0	0	1	0	0	2
Pearson	2-3	0-0	3-4	0-4-4	7	1	4	0	0	10
Harris	1-9	0-0	0-0	3-1-4	2	0	2	1	2	28
Team				3-2-5						

TOTAL 14-52 0-3 11-14 9-21-30 39 6 16 3 9 200

Total FG	1 st Half: 9-28	32.1%	2 nd Half: 5-24	20.8%	Total: 26.9%
3-pt. FG	1 st Half: 0-2	0.0%	2 nd Half: 0-1	0.0%	Total: 0.0%
F Throw	1 st Half: 3-4	75.0%	2 nd Half: 8-10	80.0%	Total: 78.6%

Hartford	FG-FGA	3FG-FGA	FT-FTA	O-D-TOT	TP	A	T	B	S	MIN
Roth*	2-4	0-1	2-2	1-1-2	6	2	1	1	0	25
Doherty*	1-3	0-0	1-2	1-5-6	3	2	0	0	0	19
Elliott*	0-6	0-3	5-6	0-2-2	5	5	1	0	2	22
Englert*	0-4	0-3	1-2	0-2-2	1	3	2	0	2	26
Bepko*	3-8	2-4	0-0	1-4-5	8	0	3	0	3	21
Michals	5-6	3-3	0-0	0-0-0	13	0	0	0	0	15
Doe	0-0	0-0	0-0	0-0-0	0	0	1	0	0	1
Hall	3-6	0-2	2-2	0-0-0	8	1	1	0	0	17
Clark	1-1	0-0	0-0	0-1-1	2	1	0	0	0	8
Gilbert	1-2	0-0	0-0	0-1-1	2	0	0	0	0	2
Bultron	3-5	2-3	0-0	1-2-3	8	0	1	0	1	17
Moore	0-0	0-0	0-0	0-0-0	0	0	2	0	0	3
Shickora	2-3	1-1	0-0	0-0-0	5	1	3	0	1	12
Smith	1-2	0-0	3-4	0-4-4	5	1	1	0	1	12
Team				6-7-13						

TOTAL 22-50 8-20 14-18 10-29-39 66 16 16 1 10 200

Total FG	1 st Half: 13-32	40.6%	2 nd Half: 9-18	50.0%	Total: 44.0%
3-pt. FG	1 st Half: 5-15	33.3%	2 nd Half: 3-5	60.0%	Total: 40.0%
F Throw	1 st Half: 3-6	50.0%	2 nd Half: 11-12	91.7%	Total: 77.8%

Team	1st	2nd	Total
Loyola	21	18	39
Hartford	34	32	66

Hartford at Marist Nov. 13, 2012 • West Hartford, CT

GAME 8

Marist	FG-FGA	3FG-FGA	FT-FTA	O-D-TOT	TP	A	T	B	S	MIN
Team										
TOTAL										
Total FG	1 st Half: 0-0	0.0%	2 nd Half: 0-0	0.0%	Total: 0.0%					
3-pt. FG	1 st Half: 0-0	0.0%	2 nd Half: 0-0	0.0%	Total: 0.0%					
F Throw	1 st Half: 0-0	0.0%	2 nd Half: 0-0	0.0%	Total: 0.0%					

Hartford	FG-FGA	3FG-FGA	FT-FTA	O-D-TOT	TP	A	T	B	S	MIN
Team										
TOTAL										
Total FG	1 st Half: 0-0	0.0%	2 nd Half: 0-0	0.0%	Total: 0.0%					
3-pt. FG	1 st Half: 0-0	0.0%	2 nd Half: 0-0	0.0%	Total: 0.0%					
F Throw	1 st Half: 0-0	0.0%	2 nd Half: 0-0	0.0%	Total: 0.0%					

Team	1st	2nd	Total
Marist	-	-	-
Hartford	-	-	-

Hartford at Dartmouth Dec. 9, 2012 • Hanover, NH

GAME 9

Hartford	FG-FGA	3FG-FGA	FT-FTA	O-D-TOT	TP	A	T	B	S	MIN
Team										
TOTAL										
Total FG	1 st Half: 0-0	0.0%	2 nd Half: 0-0	0.0%	Total: 0.0%					
3-pt. FG	1 st Half: 0-0	0.0%	2 nd Half: 0-0	0.0%	Total: 0.0%					
F Throw	1 st Half: 0-0	0.0%	2 nd Half: 0-0	0.0%	Total: 0.0%					

Dartmouth	FG-FGA	3FG-FGA	FT-FTA	O-D-TOT	TP	A	T	B	S	MIN
Team										
TOTAL										
Total FG	1 st Half: 0-0	0.0%	2 nd Half: 0-0	0.0%	Total: 0.0%					
3-pt. FG	1 st Half: 0-0	0.0%	2 nd Half: 0-0	0.0%	Total: 0.0%					
F Throw	1 st Half: 0-0	0.0%	2 nd Half: 0-0	0.0%	Total: 0.0%					

Team	1st	2nd	Total
Hartford	-	-	-
CCSU	-	-	-

Hartford vs. Quinnipiac Dec. 16, 2012 • West Hartford, CT

GAME 10

Quinnipiac	FG-FGA	3FG-FGA	FT-FTA	O-D-TOT	TP	A	T	B	S	MIN
Team										
TOTAL										
Total FG	1 st Half: 0-0	0.0%	2 nd Half: 0-0	0.0%	Total: 0.0%					
3-pt. FG	1 st Half: 0-0	0.0%	2 nd Half: 0-0	0.0%	Total: 0.0%					
F Throw	1 st Half: 0-0	0.0%	2 nd Half: 0-0	0.0%	Total: 0.0%					

Hartford	FG-FGA	3FG-FGA	FT-FTA	O-D-TOT	TP	A	T	B	S	MIN
Team										
TOTAL										
Total FG	1 st Half: 0-0	0.0%	2 nd Half: 0-0	0.0%	Total: 0.0%					
3-pt. FG	1 st Half: 0-0	0.0%	2 nd Half: 0-0	0.0%	Total: 0.0%					
F Throw	1 st Half: 0-0	0.0%	2 nd Half: 0-0	0.0%	Total: 0.0%					

Team	1st	2nd	Total
Richmond	-	-	-
Hartford	-	-	-

Hartford vs. Connecticut Dec. 22, 2012 • West Hartford, CT

GAME 11

UConn	FG-FGA	3FG-FGA	FT-FTA	O-D-TOT	TP	A	T	B	S	MIN
Team										
TOTAL										
Total FG	1 st Half: 0-0	0.0%	2 nd Half: 0-0	0.0%	Total: 0.0%					
3-pt. FG	1 st Half: 0-0	0.0%	2 nd Half: 0-0	0.0%	Total: 0.0%					
F Throw	1 st Half: 0-0	0.0%	2 nd Half: 0-0	0.0%	Total: 0.0%					

Hartford	FG-FGA	3FG-FGA	FT-FTA	O-D-TOT	TP	A	T	B	S	MIN
Team										
TOTAL										
Total FG	1 st Half: 0-0	0.0%	2 nd Half: 0-0	0.0%	Total: 0.0%					
3-pt. FG	1 st Half: 0-0	0.0%	2 nd Half: 0-0	0.0%	Total: 0.0%					
F Throw	1 st Half: 0-0	0.0%	2 nd Half: 0-0	0.0%	Total: 0.0%					

Team	1st	2nd	Total
Hartford	-	-	-
UMass	-	-	-

Hartford vs. UMES Dec. 28, 2012 • College Park, MD

GAME 12

St. John's	FG-FGA	3FG-FGA	FT-FTA	O-D-TOT	TP	A	T	B	S	MIN
Team										
TOTAL										
Total FG	1 st Half: 0-0	0.0%	2 nd Half: 0-0	0.0%	Total: 0.0%					
3-pt. FG	1 st Half: 0-0	0.0%	2 nd Half: 0-0	0.0%	Total: 0.0%					
F Throw	1 st Half: 0-0	0.0%	2 nd Half: 0-0	0.0%	Total: 0.0%					

Hartford	FG-FGA	3FG-FGA	FT-FTA	O-D-TOT	TP	A	T	B	S	MIN
Team										
TOTAL										
Total FG	1 st Half: 0-0	0.0%	2 nd Half: 0-0	0.0%	Total: 0.0%					
3-pt. FG	1 st Half: 0-0	0.0%	2 nd Half: 0-0	0.0%	Total: 0.0%					
F Throw	1 st Half: 0-0	0.0%	2 nd Half: 0-0	0.0%	Total: 0.0%					

Team	1st	2nd	Total
St. John's	-	-	-
Hartford	-	-	-

HARTFORD WOMEN'S BASKETBALL

2011-12 HARTFORD WOMEN'S BASKETBALL GAME-BY-GAME LEADERS BREAKDOWN OF INDIVIDUAL LEADERS BY POINTS, REBOUNDS, ASSISTS, STEALS & BLOCKS

<u>Game</u>	<u>Date</u>	<u>Score</u>	<u>Points</u>	<u>Rebounds</u>	<u>Assists</u>	<u>Steals</u>	<u>Blocks</u>
LOYOLA	11.09.12	64-50	14-Elliott	6-Roth	6-Englert	4-Elliott	2-Smith
MARIST	11.13.12	64-53	14-Doherty	8-Doherty	4-Englert	4-Bepko	1-Roth Englert
at Central Connecticut	11.16.12	76-62	17-Bepko Smith	6-Smith Doherty	3-Elliott	3-Ruthanne Daphne Smith	1-Michals Smith
RICHMOND	11.18.12	59-54	16-Bepko	9-Roth	6-Englert	3-Elliott	1-Michals
at Massachusetts	11.21.12	71-65	17-Roth	7-Hall	5-Hall	4-Bepko	2-Roth
ST. JOHN'S	11.25.12	54-66	16-Smith	7-Roth	4-Englert	2-Doherty Bepko	None
PROVIDENCE	12.01.12	66-39	13-Michals	6-Doherty	5-Elliott	3-Bepko	1-Roth
at Vanderbilt	12.06.12						
at Dartmouth	12.09.12						
QUINNIPIAC	12.16.12						
CONNECTICUT	12.22.12						
vs. UMES	12.28.12						
vs. Maryland/Brown	12.29.12						
at Binghamton	01.02.13						
BOSTON UNIVERSITY	01.05.13						
at Maine	01.09.13						
STONY BROOK	01.12.13						
UMBC	01.16.13						
at Albany	01.19.13						
NEW HAMPSHIRE	01.23.13						
at Vermont	01.30.13						
at Boston University	02.02.13						
BINGHAMTON	02.06.13						
at Stony Brook	02.09.13						
MAINE	02.13.13						
ALBANY	02.17.13						
at New Hampshire	02.20.13						
at UMBC	02.27.13						
VERMONT	03.02.13						

HARTFORD WOMEN'S BASKETBALL

2011-12 HARTFORD WOMEN'S BASKETBALL INDIVIDUAL STATISTICS

POINTS — REBOUNDS — ASSISTS

Opponent	Date	W L	Score	2 ELLIOTT	4 MICHALS	5 DOE	10 HALL	12 SKINNER	13 CLARK	15 GILBERT	21 BULTRON	22 ROTH
LOYOLA	11.09.12	W	64-50	14-2-0	0-1-1	DNP	5-3-3	0-0-0	INJ	0-0-0	0-1-0	7-6-0
MARIST	11.13.12	W	64-53	6-2-1	3-0-1	DNP	10-1-1	DNP	INJ	DNP	6-0-1	8-7-1
at CCSU	11.16.12	W	76-62	11-5-3	8-1-2	DNP	4-2-2	INJ	INJ	DNP	0-1-0	2-3-0
RICHMOND	11.18.12	W	59-54	12-2-0	0-1-1	DNP	2-1-0	INJ	DNP	DNP	3-1-1	6-9-2
at Massachusetts	11.21.12	W	71-65	5-2-2	0-1-0	DNP	10-7-4	INJ	2-0-0	DNP	2-1-0	17-4-0
ST. JOHN'S	11.25.12	L	54-66	6-3-2	0-0-0	DNP	2-2-0	INJ	0-1-0	DNP	0-0-2	2-7-0
PROVIDENCE	12.01.12	W	66-39	5-2-5	13-0-0	0-0-0	8-0-1	INJ	2-1-1	2-1-0	8-3-0	6-2-2
at Vanderbilt	12.06.12											
at Dartmouth	12.09.12											
QUINNIPIAC	12.16.12											
CONNECTICUT	12.22.12											
vs. UMES	12.28.12											
vs. Maryland/Brown	12.29.12											
at Binghamton	01.02.13											
BOSTON UNIVERSITY	01.05.13											
at Maine	01.09.13											
STONY BROOK	01.12.13											
UMBC	01.16.13											
at Albany	01.19.13											
NEW HAMPSHIRE	01.23.13											
at Vermont	01.30.13											
at Boston University	02.02.13											
BINGHAMTON	02.06.13											
at Stony Brook	02.09.13											
MAINE	02.13.13											
ALBANY	02.17.13											
at New Hampshire	02.20.13											
at UMBC	02.27.13											
VERMONT	03.02.13											
Totals				59-18-12	24-4-5	0-0-0	41-16-11	0-0-0	4-2-1	2-1-0	19-7-4	48-38-5

Opponent	Date	W L	Score	23 ENGLERT	24 DOHERTY	25 BEPKO	31 MOORE	33 SHICKORA	44 SMITH
LOYOLA	11.09.12	W	64-50	8-3-6	4-5-1	12-3-3	4-2-0	INJ	10-2-1
MARIST	11.13.12	W	64-53	8-1-4	14-8-1	1-1-2	0-2-0	INJ	8-7-2
at CCSU	11.16.12	W	76-62	4-0-1	13-6-1	17-4-1	0-0-1	INJ	17-6-2
RICHMOND	11.18.12	W	59-54	2-4-6	8-2-1	16-6-0	0-0-0	INJ	10-3-2
at Massachusetts	11.21.12	W	71-65	7-4-3	9-3-1	8-4-3	0-0-0	DNP	11-6-3
ST. JOHN'S	11.25.12	L	54-66	3-3-4	11-4-2	11-1-2	3-2-1	0-0-0	16-6-0
PROVIDENCE	12.01.12	W	66-39	1-2-3	3-6-2	8-5-0	0-0-0	5-0-1	5-4-1
at Vanderbilt	12.06.12								
at Dartmouth	12.09.12								
QUINNIPIAC	12.16.12								
CONNECTICUT	12.22.12								
vs. UMES	12.28.12								
vs. Maryland/Brown	12.29.12								
at Binghamton	01.02.13								
BOSTON UNIVERSITY	01.05.13								
at Maine	01.09.13								
STONY BROOK	01.12.13								
UMBC	01.16.13								
at Albany	01.19.13								
NEW HAMPSHIRE	01.23.13								
at Vermont	01.30.13								
at Boston University	02.02.13								
BINGHAMTON	02.06.13								
at Stony Brook	02.09.13								
MAINE	02.13.13								
ALBANY	02.17.13								
at New Hampshire	02.20.13								
at UMBC	02.27.13								
VERMONT	03.02.13								
Totals				33-17-27	62-34-9	73-24-11	7-6-2	5-0-1	77-34-11

HARTFORD WOMEN'S BASKETBALL

2011-12 HARTFORD WOMEN'S BASKETBALL TEAM GAME-BY-GAME BREAKDOWN OF HARTFORD (AND ITS OPPONENTS') STATS

DATE	OPPONENT	FG-FGA	PCT.	3P-3PA	PCT.	FT-FTA	PCT.	OR-DR-RB	A	TO	B	S	PTS
11.9	LOYOLA	18-49	.367	4-16	.250	10-16	.625	16-22-38	5	28	2	13	50
	HARTFORD	25-56	.446	5-18	.278	9-12	.750	11-20-31	15	21	2	15	64
11.13	MARIST	21-58	.362	6-24	.250	5-8	.625	16-18-34	12	20	3	9	53
	HARTFORD	26-51	.510	5-13	.385	7-10	.700	8-24-32	14	16	2	11	64
11.16	Hartford	24-58	.414	5-16	.313	23-27	.852	15-21-36	13	18	2	14	76
	at Central Connecticut	23-53	.434	3-12	.250	13-16	.813	10-22-32	11	23	1	9	62
11.18	RICHMOND	21-50	.420	5-13	.385	7-11	.636	9-26-35	14	20	4	2	54
	HARTFORD	23-52	.442	6-16	.375	7-16	.438	9-22-31	13	12	1	8	59
11.21	Hartford	22-53	.415	2-12	.167	25-35	.714	14-22-36	16	19	2	9	71
	at Massachusetts	25-57	.439	5-13	.385	10-14	.714	12-23-35	16	23	4	8	65
11.25	ST. JOHN'S	25-50	.500	2-9	.222	14-17	.824	7-32-39	8	16	7	9	66
	HARTFORD	20-62	.323	4-18	.222	10-14	.714	14-19-33	13	12	0	6	54
12.1	PROVIDENCE	14-52	.269	0-3	.000	11-14	.786	9-21-30	6	16	3	9	39
	HARTFORD	22-50	.440	8-20	.400	14-18	.778	10-29-39	16	16	1	10	66
12.6	Hartford												
	at Vanderbilt												
12.9	Hartford												
	at Dartmouth												
12.16	QUINNIPIAC												
	HARTFORD												
12.22	CONNECTICUT												
	HARTFORD												
12.28	Hartford												
	vs. UMES												
12.29	Hartford												
	vs. Maryland/Brown												
1.2	Hartford												
	at Binghamton												
1.5	BOSTON UNIV.												
	HARTFORD												
1.9	Hartford												
	at Maine												
1.12	STONY BROOK												
	HARTFORD												
1.16	UMBC												
	HARTFORD												
1.19	Hartford												
	at Albany												
1.23	NEW HAMPSHIRE												
	HARTFORD												
1.30	Hartford												
	at Vermont												
2.2	Hartford												
	at Boston Univ.												
2.6	BINGHAMTON												
	HARTFORD												
2.9	Hartford												
	at Stony Brook												
2.13	MAINE												
	HARTFORD												
2.17	ALBANY												
	HARTFORD												
2.20	Hartford												
	at New Hampshire												
2.27	Hartford												
	at UMBC												
3.2	VERMONT												
	Hartford												

HARTFORD WOMEN'S BASKETBALL

2011-12 HARTFORD WOMEN'S BASKETBALL OVERALL STATISTICS

6-1 OVERALL • 0-0 AE • HOME: 4-1 • AWAY: 2-0 • NEUTRAL: 0-0

#	Player	GP-GS	Min--Avg	FG-FGA	Pct	3FG-FGA	Pct	FT-FTA	Pct	Off-Def	Tot	Avg	PF	A	TO	Blk	Stl	Pts	Avg
44	Nikkia Smith	7-0	140--20.0	29-58	.500	0-1	.000	19-26	.731	11-23	34	4.9	13	11	8	3	7	77	11.0
	Conference Only	--	--	--	--	--	--	--	--	--	--	--	--	--	--	--	--	--	--
25	Amber Bepko	7-7	199--28.4	21-50	.420	13-35	.371	18-28	.643	4-20	24	3.4	16	11	12	0	19	73	10.4
	Conference Only	--	--	--	--	--	--	--	--	--	--	--	--	--	--	--	--	--	--
24	Ruthanne Doherty	7-7	173--24.7	27-59	.458	0-0	.000	8-11	.727	19-15	34	4.9	13	9	18	0	10	62	8.9
	Conference Only	--	--	--	--	--	--	--	--	--	--	--	--	--	--	--	--	--	--
2	Daphne Elliott	7-7	157--22.4	17-48	.354	8-30	.267	17-24	.708	4-14	18	2.6	11	13	10	0	15	59	8.4
	Conference Only	--	--	--	--	--	--	--	--	--	--	--	--	--	--	--	--	--	--
22	Katie Roth	7-7	153--21.9	18-40	.450	1-5	.200	11-19	.579	11-27	38	5.4	10	5	16	4	5	48	6.9
	Conference Only	--	--	--	--	--	--	--	--	--	--	--	--	--	--	--	--	--	--
10	Alex Hall	7-0	143--20.4	16-38	.421	1-11	.091	8-8	1.000	2-14	16	2.6	6	11	12	0	2	41	5.9
	Conference Only	--	--	--	--	--	--	--	--	--	--	--	--	--	--	--	--	--	--
23	Alyssa Englert	7-7	189--27.0	11-31	.355	2-12	.167	9-10	.900	6-11	17	2.4	11	27	15	1	8	33	4.7
	Conference Only	--	--	--	--	--	--	--	--	--	--	--	--	--	--	--	--	--	--
4	Christie Michals	7-0	74--10.6	9-15	.600	4-6	.667	2-2	1.000	2-2	4	0.6	2	5	5	2	2	24	3.4
	Conference Only	--	--	--	--	--	--	--	--	--	--	--	--	--	--	--	--	--	--
21	Shanise Bultron	7-0	72--10.3	7-15	.467	5-12	.417	0-0	.000	2-5	7	1.0	3	4	4	0	3	19	2.7
	Conference Only	--	--	--	--	--	--	--	--	--	--	--	--	--	--	--	--	--	--
33	Mallory Shickora	2-0	18--9.0	2-4	.500	1-1	1.000	0-0	.000	0-0	0	0.0	4	1	3	0	1	5	2.5
	Conference Only	--	--	--	--	--	--	--	--	--	--	--	--	--	--	--	--	--	--
13	Taylor Clark	3-0	17--5.7	2-4	.500	0-0	.000	0-0	.000	0-2	2	0.7	3	1	1	0	0	4	1.3
	Conference Only	--	--	--	--	--	--	--	--	--	--	--	--	--	--	--	--	--	--
31	Cherelle Moore	7-0	56--8.0	2-17	.118	0-0	.000	3-4	.750	2-4	6	0.9	5	2	7	0	1	7	1.0
	Conference Only	--	--	--	--	--	--	--	--	--	--	--	--	--	--	--	--	--	--
15	Milana Gilbert	2-0	4--2.0	1-3	.333	0-0	.000	0-0	.000	0-1	1	0.5	1	0	0	0	0	2	1.0
	Conference Only	--	--	--	--	--	--	--	--	--	--	--	--	--	--	--	--	--	--
12	Katelyn Skinner	1-0	4--4.0	0-0	.000	0-0	.000	0-0	.000	0-0	0	0.0	3	0	0	0	0	0	0.0
	Conference Only	--	--	--	--	--	--	--	--	--	--	--	--	--	--	--	--	--	--
5	Diamond Doe	1-0	1--1.0	0-0	.000	0-0	.000	0-0	.000	0-0	0	0.0	0	0	1	0	0	0	0.0
	Conference Only	--	--	--	--	--	--	--	--	--	--	--	--	--	--	--	--	--	--
	TEAM									18-19	37	5.3			2				
	Conference Only	--	--	--	--	--	--	--	--	--	--	--	--	--	--	--	--	--	--
	HARTFORD TOTAL	7	1,400	162-382	.424	35-113	.310	95-132	.720	81-157	238	34.0	101	100	114	10	73	454	64.9
	Conference Only	--	--	--	--	--	--	--	--	--	--	--	--	--	--	--	--	--	--
	Opponents Total	7	1,400	147-369	.398	25-90	.278	70-96	.729	79-164	243	34.7	130	72	146	24	59	389	55.6
	Conference Only	--	--	--	--	--	--	--	--	--	--	--	--	--	--	--	--	--	--

2011-12 HARTFORD WOMEN'S BASKETBALL TEAM STATISTICS

6-1 OVERALL • 0-0 AE • HOME: 4-1 • AWAY: 2-0 • NEUTRAL: 0-0

	Hartford	Opponent	Hartford	Opponent	
SCORING	454	389	ASSISTS.....	100	72
Points Per Game	64.9	55.6	Assists per game.....	14.3	10.3
Scoring Margin	+9.3	-	TURNOVERS.....	114	146
FIELD GOALS-ATT	162-382	147-369	Turnovers per game.....	16.3	20.9
Field Goals pct424	.398	Turnover Margin	+4.6	-
3-POINT FG-ATT	35-113	25-90	Assist/Turnover Ratio	0.9	0.5
3-point FG pct310	.278	STEALS.....	73	59
3-point FG made per game ...	5.0	3.6	Steals per game.....	10.4	8.4
FREE THROWS-ATT	95-132	70-96	BLOCKS.....	10	24
Free Throw pct720	.729	Blocks per game.....	1.4	3.4
REBOUNDS.....	238	243	ATTENDANCE.....	7,734	1,719
Rebounds per game.....	34.0	34.7	Home Games Avg per game...	5-1,547	2-860
Rebounding Margin.....	-0.7	-			