

UoFL BASKETBALL QUICK FACTS

Location	Louisville, Ky.
Founded / Enrollment	1798 / 22,298
Nickname / Colors	Cardinals / Red and Black
Conference	Atlantic Coast
Home Court (Capacity)	KFC Yum! Center (22,000)
Acting President	Dr. Neville Pinto
Vice President for Athletics	Tom Jurich
Senior Woman Administrator	Christine Herring
Head Coach	Jeff Walz (Northern Kentucky, '95)
UofL Record	245-87 (10th yr.)
Career Record	Same
Associate Head Coach	Stephanie Norman
Assistant Coaches	Samantha Williams, Sam Purcell
Director of Operations	Kate Tucker
All-Time Record	792-478 (42nd yr.)
All-Time NCAA Tournament Record	25-19
	19 Appearances, Two Final Fours
Important Phone Numbers	
Athletics Department	(502) 852-5732
Basketball Office	(502) 852-8355
Sports Information Office	(502) 852-6581
SID - Ira Green	c: (561) 386-3755
email: Ira@GoCards.com	

2016-17 SCHEDULE/RESULTS

Date	Opponent	Time/Result
NOVEMBER		
Sun. 6	LINDSEY WILSON (exh.)	W, 97-50
Fri. 11	at UT Martin	W, 100-57
Sun. 13	RV/NR BELMONT (ACCN Extra)	W, 73-50
Wed. 16	at Middle Tennessee	W, 91-72
Sat. 19	BOWLING GREEN ^ (ACCN Extra)	W, 83-58
Sun. 20	LAFAYETTE ^ (ACCN Extra)	W, 92-48
Mon. 21	CHATTANOOGA ^ (ACCN Extra)	W, 63-47
Sun. 27	vs. 3/3 South Carolina % (ESPN2)	L, 59-83
DECEMBER		
Thurs. 1	5/5 MARYLAND ~ (ACCN Extra)	L, 72-78
Sun. 4	17/20 KENTUCKY (ACCN Extra)	W, 69-67 (ot)
Sun. 11	WESTERN KENTUCKY (ACCN Extra)	W, 68-61
Wed. 14	SOUTH DAKOTA ST. (ACCN Extra)	W, 83-30
Fri. 16	CHARLESTON (ACCN Extra)	W, 86-58
Sun. 18	EVANSVILLE (ACCN Extra)	W, 89-47
Wed. 21	at RV/NR Vanderbilt (SEC+)	8 p.m.
Thurs. 29	SYRACUSE (ACCN Extra)	7 p.m.
JANUARY		
Mon. 2	at Duke (ESPNU)	7 p.m.
Thurs. 5	at Virginia (ACCN Extra)	7 p.m.
Sun. 8	PITTSBURGH (RSN/FOX)	4 p.m.
Thurs. 12	at Florida State (ACCN Extra)	7 p.m.
Sun. 15	MIAMI (ESPN2/U)	1:30 p.m.
Wed. 18	GEORGIA TECH (ACCN Extra)	7 p.m.
Sun. 22	at USF (ESPN2)	2 p.m.
Thurs. 26	at Clemson	7 p.m.
Sun. 29	at Pittsburgh	2 p.m.
FEBRUARY		
Thurs. 2	NC STATE (ACCN Extra)	7 p.m.
Mon. 6	at Notre Dame (ESPN2)	7 p.m.
Thurs. 9	at Virginia Tech (ACCN Extra)	7 p.m.
Sun. 12	BOSTON COLLEGE (RSN/FOX)	3 p.m.
Sun. 19	NORTH CAROLINA (ESPNU)	12 p.m.
Thurs. 23	VIRGINIA (ACCN Extra)	7 p.m.
Sun. 26	at Wake Forest (ACCN Extra)	2 p.m.
MARCH		
Wed.-Sun. 1-5	at ACC Tournament &	TBA

^ Basketball Hall of Fame Women's Challenge (Louisville, Ky.)
 % Basketball Hall of Fame Women's Challenge (Springfield, Mass.)
 ~ ACC/Big Ten Challenge (Louisville, Ky.)
 & ACC Tournament (Conway, S.C.)



LOUISVILLE | 16 WOMEN'S BASKETBALL | 17

2009, 2013 NCAA National Finalist // 19 NCAA Tournament Appearances

Sports Information Office // University of Louisville // Louisville, KY 40292 // GoCards.com
 Phone: (502) 852-6581 // Fax: (502) 852-7401 // email: Ira@GoCards.com // Twitter: @UofLWBB

Louisville Cardinals vs. Vanderbilt Commodores

PROBABLE STARTING LINEUP

Louisville (11-2)	Ht.	Cl.	PPG	RPG	APG	Hometown
F 2 Myisha HINES-ALLEN	6-2	Jr.	11.2	8.0	1.9	Montclair, N.J.
F 4 Mariya MOORE	6-0	Jr.	11.2	4.2	4.1	Hercules, Calif.
F 13 Cortnee WALTON	6-3	r-Sr.	4.7	7.0	0.6	Surprise, Ariz.
G 0 Briahanna JACKSON	5-6	r-Sr.	7.5	3.3	4.9	Tampa, Fla.
G 25 Asia DURR	5-10	So.	17.4	2.4	1.5	Douglasville, Ga.
Vanderbilt (10-1)	Ht.	Cl.	PPG	RPG	APG	Hometown
F 22 Marqu'es WEBB	6-1	Sr.	6.3	9.3	0.5	Montgomery, Ala.
G 3 Rachel BELL	5-10	Jr.	12.1	2.4	1.8	Cumberland Furnace, Tenn.
G 10 Cierra WALKER	5-8	Fr.	8.1	2.5	3.7	Oregon City, Ore.
G 33 Christa REED	5-11	Jr.	12.7	5.3	1.5	Bay St. Louis, Miss.
G 35 Kaleigh CLEMONS-GREEN	5-7	Fr.	4.5	2.9	2.5	Chattanooga, Tenn.

Head Coach: Stephanie White (Purdue, '99) 10-1 in 1st yr. at Vanderbilt and overall

THE MATCH-UP

No. 8 Louisville rolled to its fifth-consecutive victory after routing Evansville 89-47 on Sunday. The Cardinals shot 50.0 percent and forced 20 turnovers for the third-consecutive game. Kylee Shook had season bests of 18 points and 10 rebounds. Vanderbilt, which has won eight straight, beat Tennessee Tech 89-57 on Sunday. The Commodores shot 50.0 percent and were paced by Christa Reed (25 points) and Erin Whalen (23 points, 11 rebounds).

THE MATCH-UP

Date: Wednesday, Dec. 21
Time: 8 p.m. ET
Site: Memorial Gymnasium, Nashville, Tenn. (14,316)
Television: SEC Network+; Kevin Ingram (play-by-play); Jessica Holman (analyst)
Radio: WKJK (1080 AM); Nick Curran, play-by-play; Adrienne Johnson, analyst; (also: GoCards.com)
Last Meeting: UofL 81, Vanderbilt 62 (March 20, 2011, in Cincinnati, Ohio)
Series History: Vanderbilt leads 8-4 (2-2 in Louisville, 4-1 in Nashville, 2-1 neutral)
UofL National Ranking: 8th Associated Press, 8th USA Today
Next UofL game: Thursday, Dec. 29 vs. Syracuse, KFC Yum! Center in Louisville, Ky., 7 p.m. ET (ACCN Extra)

BY THE NUMBERS

20.7 Louisville's pressuring defense has forced opponents into an average of 20.7 turnovers over the last six games, including at least 20 each of the last three contests. The Cardinals, averaging 9.0 steals in that span, are converting the turnovers into 23.0 points per contest.

28.8 The Cardinals' bench is averaging 28.8 points through 13 games. The unit has scored more than 40 points on four occasions. Notably, Louisville is 8-1 when its bench outscores the opposing team's bench. Currently, Kylee Shook is averaging 5.9 points, the most among the reserves.

1 Kylee Shook had 18 points and 10 rebounds against Evansville, recording her first career double-double. The freshman, who matched a season high with four blocks, achieved the marks in 17 minutes.

2 Asia Durr ranks second nationally in 3-point field goals made, connecting on 46 over the course of 13 games. The sophomore, who is hitting at a 43.8 percent clip, has knocked down at least four treys in seven games, including a career-best eight earlier this year.

7 After last week's performances, Louisville has earned at least 10 nonconference victories each of the last seven seasons. The Cardinals, currently 11-2 against non-league opponents, are 114-30 all-time under head coach Jeff Walz.

■ **About Vanderbilt** - Louisville plays its final game before the holiday break against Vanderbilt in Memorial Gymnasium on Wednesday (Dec. 21, 8 p.m. ET, SEC Network+). It is the Cardinals' second game against a Southeastern Conference foe and first time traveling to Nashville to face the Commodores since 2006.

Vanderbilt defeated Tennessee Tech 89-57 on Sunday for the Commodores' eighth-consecutive victory. Vanderbilt shot 50.0 percent and went 18 of 21 from the free throw line. The Commodores scored 17 second-chance points and 26 points off 20 Golden Eagles turnovers. The turning point of the game, arguably, came when Vanderbilt outscored Tennessee Tech 28-6 in the second quarter.

Christa Reed scored a team-high 25 points on 10-of-12 shooting, the only starter in double figures. Erin Whalen came off the bench and totaled 23 points - 8 of 8 from the charity stripe - and 11 rebounds, despite turning over the ball seven times. Fellow reserve Lealea Carter had 18 points, seven rebounds, and four assists.

Through 11 games, Reed is pacing the team with 12.7 points. Rachel Bell (12.1) and Rebekah Dahlman (11.1) also are averaging double figures, with Dahlman shooting a remarkable 91.7 percent from the line (33 of 36) and 55.6 percent from 3-point range (15 of 27). Cierra Walker boasts a team-high 41 assists.

Collectively, Vanderbilt ranks seventh in the country in 3-point field goal percentage (.417) and ninth in free throws made (182) and free throw percentage (.784).

■ **Series History** - Vanderbilt leads Louisville 8-4 in the all-time series, boasting a 4-1 advantage in Nashville. The Cardinals have won two of the last four meetings.

Last time the two teams played, Louisville earned an 81-62 decision on March 20, 2011, in the first round of the NCAA Tournament. The Cardinals shot 60 percent from the field, held a 35-19 advantage on the glass, and outscored the Commodores 41-26 in the first half.

Monique Reid led all scorers with 22 points on 10-of-15 shooting, also tallying six rebounds and five assists. Shoni Schimmel and Tia Gibbs each registered 19 points, and Keshia Hines finished with 16 points and nine rebounds.

■ **High-Percentage Shooting** - Louisville has shown its capability of firing from long range. While the Cardinals' 3-point total ranks in the upper half of the ACC, it's the team's accuracy from inside the arc that deserves attention.

Louisville has connected on 326 of its 649 2-point field goals this year, a solid 50.2 percent clip. It's the second-highest rate in the Jeff Walz era, only trailing the 2007-08 team's mark of 50.9 percent (874 of 1716).

■ **Statistical Trends** - Louisville is 166-18 (.902) when scoring 70 or more points under head coach Jeff Walz (8-1 this year; 18-3 in 2015-16). ... UofL boasts an 81-1 record (.988) when shooting 50 percent or better from the field under Walz (3-0 this year; 7-0 last season).

2016-17 Vanderbilt Commodores Roster

No.	Name	Pos.	Ht.	Cl.	Hometown (Previous School)
0	Kayla Overbeck	F	6-1	Fr.	Newbury Park, Calif. (Newbury Park)
1	Rebekah Dahlman	G	5-9	R-Jr.	Braham, Minn. (Braham Area)
3	Rachel Bell	G	5-10	Jr.	Cumberland Furnace, Tenn. (Creek Wood)
10	Cierra Walker	G	5-8	Fr.	Oregon City, Ore. (Oregon City)
12	Myka Dancy	G	5-9	Jr.	Antioch, Tenn. (Antioch)
21	Erin Whalen	G/F	6-1	Fr.	Charlotte, N.C. (Providence Day School)
22	Marqu'es Webb	F	6-1	Sr.	Montgomery, Ala. (Hoover)
23	Minta Spears	G	5-10	R-Sr.	Bullard, Texas (Texas Tech)
30	LeaLea Carter	G	5-11	Fr.	Dickson County, Tenn. (Dickson County)
33	Christa Reed	G	5-11	Jr.	Bay St. Louis, Miss. (Bay)
35	Kaleigh Clemons-Green	G	5-7	Fr.	Chattanooga, Tenn. (Baylor School)
41	Miaya Sewright	G	5-7	Jr.	Simpsonville, S.C. (Hillcrest)

Head Coach: Stephanie White **Asst Coaches:** Carolyn Peck (Assoc.), Joy Cheek, Kelly Komara

LAST MEETING

Louisville 81, Vanderbilt 62
March 20, 2011 - Cincinnati, Ohio (Cintas Center)

Louisville, 81

Player	Min	FG	3FG	FT	Reb	Ast	TO	BL	ST	PF	TP
Taylor	f 16	0-0	0-0	2-2	4	1	1	0	0	1	2
Reid	f 35	10-15	0-0	2-2	6	5	4	0	1	2	22
Hines	c 32	5-6	0-0	6-6	9	1	2	0	3	3	16
Schimmel	g 37	8-13	3-7	0-0	2	3	5	1	1	1	19
Gibbs	g 36	7-9	5-7	0-0	8	3	3	0	3	2	19
Harper	1	0-0	0-0	0-0	1	0	0	0	0	0	0
Vails	7	0-0	0-0	1-2	2	0	2	0	0	2	1
Slaughter	4	0-1	0-1	0-0	0	0	0	0	0	0	0
Tay	19	0-1	0-0	0-0	2	5	1	1	2	0	0
Burke	11	0-5	0-4	2-2	0	2	1	0	0	0	2
Harrington	1	0-0	0-0	0-0	0	0	0	0	0	0	0
Story	1	0-0	0-0	0-0	0	0	0	0	0	0	0
Team					1						
Totals	200	30-50	8-19	13-14	35	20	20	2	10	11	81

Total FG%	1st H: 15-29	51.7%	2nd H: 15-21	71.4%	Game: 60.0%
3-Pt. FG%	1st H: 6-14	42.9%	2nd H: 2-5	40.0%	Game: 42.1%
F Throw %	1st H: 5-6	83.3%	2nd H: 8-8	100.0%	Game: 92.9%

Vanderbilt, 62

Player	Min	FG	3FG	FT	Reb	Ast	TO	BL	ST	PF	TP
Tuomi	f 23	2-2	0-0	0-0	0	2	3	0	0	3	4
Clarke	f 19	2-5	0-0	0-0	2	0	2	1	0	2	4
Lister	g 31	3-9	3-6	4-4	1	1	2	0	1	1	13
Rhoads	g 29	3-10	0-0	0-0	4	6	3	0	0	0	6
Brown	g 28	3-7	2-5	0-0	2	1	2	1	5	2	8
Puleo	4	0-0	0-0	0-0	0	0	0	0	0	0	0
Foggie	15	3-8	0-3	0-1	0	1	0	0	2	1	6
Holzer	21	5-10	0-0	0-0	4	2	1	1	2	4	10
Smith	30	4-6	2-4	1-1	3	2	2	0	2	2	11
Team					3						
Totals	200	25-57	7-18	5-6	19	15	14	3	12	15	62

Total FG%	1st H: 12-26	46.2%	2nd H: 13-31	41.9%	Game: 43.9%
3-Pt. FG%	1st H: 1-6	16.7%	2nd H: 6-12	50.0%	Game: 38.9%
F Throw %	1st H: 1-1	100.0%	2nd H: 4-5	80.0%	Game: 83.3%

Score by Periods	1st	2nd	Total	Attendance: 4,003
Vanderbilt	26	36	62	Ties: 3
Louisville	41	40	81	Lead Changes: 0

■ **Picking Pockets** - Under head coach Jeff Walz, Louisville consistently has been among the best in thefts. The Cardinals have ranked in the top 40 in steals on six occasions over the last nine seasons.

Louisville, which has recorded double-digit steals in seven games, boasts 129 steals. The Cardinals opened the season with 14 against UT Martin, followed with 10 versus Belmont, and tallied 16 against Bowling Green and Lafayette. Fourteen players have at least one steal this season, and Briahanna Jackson has a team-high 27 to rank 48th nationally.

■ **Can I help you?** - Louisville was one of the best teams in the country last year in earning assists on made field goals, helping on 62.8 percent of its baskets (587 assists on 934 field goals). Through 13 games, the Cardinals have been credited with 249 assists on 409 field goals, a 60.9 percent rate.

Briahanna Jackson has a team-leading 63 assists, Mariya Moore boasts 53, Taylor Johnson owns 33, and Myisha Hines-Allen has 25.

Returning Production from 2015-16

	Per Game	Pct. %
Points	66.2	91.7
3-Pointers	5.2	93.2
Rebounds	31.1	80.2
Assists	13.9	86.3
Steals	8.2	86.4
Starts	5.0	100

Career Starts: 365

■ **Closing in on Milestones** - Louisville's success under 10th-year head coach Jeff Walz has expedited its pace to new milestones.

With Walz at the helm of the program, the Cardinals are averaging 26 victories per season and now are eight shy of reaching 800 wins (792-478) as a program. Louisville entered the year with 781 victories, 41st most in NCAA Division I history.

Louisville, also approaching the 100-win milestone in the KFC Yum! Center, currently stands at 96-13 in the downtown venue.

■ **Good to (Tenne)See You Again** - Louisville played three schools consecutively from the state of Tennessee to open the season, defeating UT Martin, Belmont, and Middle Tennessee. Louisville then beat Chattanooga and faces Vanderbilt on Dec. 21.

All-time, Louisville is 65-42 against schools from the state of Tennessee (Memphis: 23-23; Austin Peay: 9-0; UT Martin: 6-0; East Tennessee State: 5-0; Vanderbilt: 4-8; Middle Tennessee: 5-1; Tennessee Tech: 4-1; Tennessee State: 3-2; Belmont: 3-0; Chattanooga: 2-5; Tennessee: 1-2).

■ **3-Point Threat** - Asia Durr has experienced little issue dialing long distance. The sophomore has connected on 46 3-pointers this season through 13 games, a total that ranks second nationally. Her 3.54 per game is seventh best in the nation. Maybe equally impressive is the fact she is connecting on the shots at a 43.8 percent clip.

While early, Durr is well on her way to crack the school's single season top-10 list for 3-pointers made (Brandie Radde is 10th, with 70). Currently, Durr is ahead of the pace Shoni Schimmel used to set the school record in 2013-14 with 118 treys. Schimmel had 39 through 13 contests.

■ **Returning to Form** - The reigning and preseason ACC Player of the Year, Myisha Hines-Allen is returning to last year's form as a dominant offensive player.

The junior, overcoming a "slow" start for her standards, is averaging 14.0 points over the Cardinals' last six games, shooting 51.4 percent from the field. She is pulling down 7.3 rebounds and has two double-doubles in the stretch.

In the first seven games, Hines-Allen averaged 8.9 points and 8.6 rebounds, while shooting 45.8 percent - well below her 54.2 percent career average.

■ **Fantastic Fourth** - Louisville was stellar in the fourth quarter in wins over Western Kentucky and South Dakota State. Combined, the Cardinals outscored their foes 46-14, outrebounded them 17-5, and shot 67.9 percent from the floor over the 10-minute span. Opponents shot just 19.2 percent.

Against Western Kentucky, Louisville entered the final period behind 52-46. The Cardinals used a 9-2 run to open the quarter and take the lead, finishing with a season-best 24 points in the frame. Louisville shot a remarkable 9 of 15 from the floor, connecting on two 3-pointers, and outrebounded the Hilltoppers 14-4 in the period. Defensively, Western Kentucky mustered just nine points on 4 of 14 shooting.

The next game, Louisville outscored South Dakota State 22-5 in the final period. The Cardinals forced six turnovers and held the Jackrabbits to 1 of 12 from the floor, while shooting 10 of 13. Sydney Zambrotta had all 10 of her points in the period.

■ **Climbing the Ranks** - Myisha Hines-Allen and Mariya Moore have enjoyed plenty of success, especially on the offensive end during their times at Louisville.

Hines-Allen became the 26th member of the school's 1,000-point club in the Cardinals' victory at Middle Tennessee. The junior boasts 1,129 for her career and is 57 away from passing Joan Dunaway-Burks (1977-81) for 17th place.

Moore, meanwhile, joined the elite club following her second field goal against Chattanooga. She currently has 1,077 points, nine shy of moving into 22nd place.

The last time a pair of teammates reached 1,000 career points in the same season was during the 2014-15 campaign, when Sara Hammond and Bria Smith achieved the feat. Prior to that season, only two other times in school history did at least two teammates reach the milestone in the same year: 1991-92, Nell Knox, Tuonisia Turner, and Gwen Doyle; 1984-85, Jackie Spencer, Devita Ceaser, and Stephanie Edwards.

Louisville's 1,000-Point Club		
Player	Points	Years
17. Joan Dunaway-Burks	1,185	1977-81
18. Myisha Hines-Allen	1,129	2014-pres.
19. Marla Inman-Eltrevoog	1,107	1994-97
20. Gwen Doyle	1,104	1990-92
21. Kelly Rose	1,101	1989-93
22. Valerie Owens	1,085	1976-80
Misty Smith	1,085	1994-98
24. Mariya Moore	1,077	2014-pres.

'16-17 NATIONAL RANKINGS

Associated Press

- (Dec. 19)
1. Connecticut
 2. Notre Dame
 3. Baylor
 4. Maryland
 5. Mississippi State
 6. South Carolina
 7. Florida State
 8. **Louisville**
 9. Washington
 10. UCLA
 11. Miami
 12. Ohio State
 13. West Virginia
 14. Stanford
 15. Colorado
 16. Texas
 17. Duke
 18. Kentucky
 19. Syracuse
 20. Oklahoma
 - t-21. South Florida
 - t-21. Arizona State
 23. Virginia Tech
 24. Kansas State
 25. Oregon State

Receiving votes: DePaul, California, Florida, Northwestern, Oregon, Oklahoma State, USC, Texas A&M, UNLV, Tennessee, Auburn, Vanderbilt, Ole Miss, Gonzaga, Green Bay

USA Today

- (Dec. 20)
1. Connecticut
 2. Notre Dame
 3. Maryland
 4. Baylor
 5. Mississippi State
 6. South Carolina
 7. Florida State
 8. **Louisville**
 9. Washington
 10. UCLA
 11. Miami
 12. West Virginia
 13. Ohio State
 14. Stanford
 15. Oregon State
 16. Syracuse
 17. Texas
 18. Duke
 19. Arizona State
 20. California
 21. Oklahoma
 22. DePaul
 23. Virginia Tech
 24. Kentucky
 25. South Florida

Receiving votes: Colorado, Oklahoma State, Michigan State, Texas A&M, Michigan, Green Bay, Northwestern, Oregon, Gonzaga, Florida, Kansas State, Tennessee, Temple, Utah, Tulane, Penn State

Louisville in the Polls

Date	AP	USAT	Date	AP	USAT
Preseason	5	8	Dec. 12	8	8
Nov. 14	5	6	Dec. 19	8	
Nov. 21	4	4			
Nov. 28	7	7			
Dec. 5	8	8			

■ **Cardinals in the Polls** - Coupling the 2006-07 campaign with that of head coach Jeff Walz's tenure, which started in 2007-08, Louisville has appeared in the Associated Press poll 140 times, with an average rank of 12th over that span. The Cardinals' total appearances in the 10-year timeframe ranks 12th among all NCAA Division I programs. When UofL exited the poll on Nov. 30, 2015, it ended a period of 81-straight weeks in the top 25.

Last year, Louisville debuted at No. 12 in the AP preseason poll and reached as high as fourth from Jan. 12-19. The Cardinals finished the 2014-15 campaign eighth in the AP Poll, their third time concluding the year in the top 10. Louisville also maintained a top-15 ranking throughout the year in the ESPN/USA Today Coaches Poll, taking 10th in the final poll.

■ **Success in the KFC Yum! Center** - Louisville captured its 75th victory in the KFC Yum! Center in 2015-16 following its 75-42 victory over Valparaiso on Dec. 5. The Cardinals capped the year 13-3 at home.

UofL boasts a 96-13 record (.881) in the World's Most Spectacular Arena. All-time in the venue, Louisville holds a +21.8 scoring margin (75.8-54.0) and is shooting 45.0 percent from the field. With its 32 field goals against College of Charleston on Dec. 16, 2016, Louisville surpassed 3,000 field goals made inside the KFC Yum! Center (3063 for 6811).

2016-17 University of Louisville Cardinals Roster

No.	Name	Pos.	Ht.	Cl.	Hometown (Previous School)
0	Briahanna Jackson	5-6	G	r-Sr.	Tampa, Fla./UCF
2	Myisha Hines-Allen	6-2	F	Jr.	Montclair, N.J./Montclair
3	Sam Fuehring	6-3	F	So.	Wanaque, N.J./Immaculate Conception
4	Mariya Moore	6-0	F	Jr.	Hercules, Calif./Salesian
10	Sydney Zambrotta	5-9	G	Fr.	North Babylon, N.Y./Christ the King
11	Arica Carter	5-8	G	Jr.	Los Angeles, Calif./Long Beach Poly
13	Cortnee Walton	6-3	F	r-Sr.	Surprise, Ariz./St. Mary's Catholic
15	Taylor Johnson	5-7	G	Gr.	Frankfort, Ill./Loyola Chicago
21	Kylee Shook	6-4	F	Fr.	Colorado Springs, Colo./Mesa Ridge
22	Brianna Jones	5-9	G	So.	North Babylon, N.Y./North Babylon
23	Jazmine Jones	6-0	G	Fr.	Tallahassee, Fla./Florida A&M Dev.
24	Jessica Laemmle	5-2	G	Fr.	Louisville, Ky./Mercy Academy
25	Asia Durr	5-10	G	So.	Douglasville, Ga./St. Pius X Catholic
33	Bionca Dunham	6-2	F	Fr.	Philadelphia, Pa./Imhotep Institute Charter
40	Ciera Johnson	6-4	C	Fr.	Duncanville, Texas/Duncanville

Pronunciation: Arica (air-IH-kuh), Brianna (bree-anne-uh), Briahanna (bree-aw-nuh), Fuehring (FYUR-ing), Laemmle (lim-LEE), Myisha (my-EE-shuh), Mariya (muh-RYE-uh), Walz (walls), Zambrotta (zam-BRAW-tuh)

■ **Outlasting Opponents** - Louisville defeated in-state foe Kentucky on Dec. 4 in overtime, only the Cardinals' 43rd contest in school history that went beyond regulation. With the victory, Louisville has won five-straight overtime games, dating back to 2013.

All-time, Louisville boasts a 24-19 overtime record, including a 15-6 mark at home. Under head coach Jeff Walz, the Cardinals are 7-4 in games that need extra time.

■ **Bonus from the Bench** - Louisville's bench contributed in a major way in the team's victory over South Dakota State, totaling 51 points on 20 of 31 shooting, including a 4 of 6 stint from 3. It's the most points the Cardinals have received from their bench since the 2011-12 season, when Louisville's reserves totaled 58 points in a 105-62 victory over Murray State on Nov. 29.

This year, Louisville's bench has accumulated 374 points - or 28.8 per game.

■ **Welcome Back Walton** - Louisville redshirt senior Cortnee Walton, who suffered a right elbow injury during the preseason and missed the first six games of the regular season, returned and has started the last six games. Overall, Walton is averaging 4.7 points and 7.0 rebounds, including 3.6 offensive boards per game.

Walton averaged 5.9 points, 7.3 rebounds, and 1.2 steals last season in 34 games. She completed the year with 136 boards on the offensive end, pulling down 4.0 per game for the second-highest average in the ACC.

■ **Puny Periods** - Louisville's defense clamped down on opponents last year, limiting foes to single-digit points in a period on 25 occasions through 34 contests.

The Cardinals are continuing that trend in 2016-17. Louisville has stifled nine of its 13 opponents to single-digit points in one period, most recently Evansville to nine points in the third quarter.

Diving deeper into the numbers, of the 36 (25 in 2015-16) times the feat happened, 14 took place in the first period, 12 in the second, eight in the fourth, and two in the third.

■ **Running Through a Gauntlet** - Even before reaching their difficult ACC schedule, the Cardinals are putting themselves through a rigorous nonconference slate.

The Cardinals have faced 2016 NCAA Tournament participants Belmont (win), Middle Tennessee (win), Chattanooga (win), No. 3 South Carolina (loss), No. 5 Maryland (loss), No. 17 Kentucky (win), Western Kentucky (win), and South Dakota State (win). Still looming, the Cardinals' out-of-league schedule includes Vanderbilt and South Florida.

In a report compiled by the NCAA, the Cardinals' future opponents have won 81.5 percent of their games, the third highest in Division I.

More than half (17) of the Cardinals' 29 opponents won at least 20 games a year ago. Nineteen of this year's opponents reached postseason play in 2015-16, including 12 that reached the NCAA Tournament.

HEAD COACH JEFF WALZ

Head coach **Jeff Walz**, entering his 10th season as a head coach, has compiled a 245-87 (.738) record as the Cardinals' leader. He has led Louisville to six NCAA Sweet 16 appearances, two of which culminated with NCAA runner-up finishes (2009, 2013). Walz, who is averaging 26 wins per season, became the winningest coach in program history in 2013-14. He also has the most 20-win seasons in school history (8) and the top-three entries for most victories in a season (34 in 2008-09; 33 in 2013-14; and 29 in 2012-13).



Hired on March 27, 2007, the Bluegrass State native took the program to its first NCAA Sweet 16 and it culminated with Louisville earning the No. 12 ranking in the final ESPN/USA Today Coaches Poll. For his efforts, Walz was named the WBCA Maggie Dixon Rookie Coach of the Year.

Prior to taking the reins at Louisville, Walz spent time on four other coaching staffs: Western Kentucky (1996-97), Nebraska (1997-01), Minnesota (2001-02), and Maryland (2002-07). He helped Maryland win the program's first national title in 2006.

Walz's Milestone Collegiate Victories

No.	Date	Score
1	11/10/07	Louisville 81, Ball State 62
50	2/17/09	Louisville 89, St. John's 60
100	11/22/11	Louisville 78, Austin Peay 60
150	11/11/13	Louisville 100, Quinnipiac 82
200	1/29/15	Louisville 78, Syracuse 58

Note: Walz is five wins shy of 250 for his career, boasting 245 to date.

■ **Playing in a Packed House** - Since beginning play in the KFC Yum! Center in 2010-11, Louisville has played in front of three arena-capacity crowds (capacity is 22,000), while averaging more than 9,000 per game.

In Louisville's regular-season finale against Connecticut on March 3, 2014, fans packed the venue for a program-record crowd of 22,163. The record prior to that was attained against Kentucky on Dec. 5, 2010, a 78-52 victory in front of 22,152.

The record was first set in the team's opening game in the downtown arena, playing host to Tennessee with 22,124 on hand on Nov. 12, 2010.

All three games ranked in the top five of Division I games attended that season: vs. Kentucky, No. 1 in 2010-11; vs. Tennessee, No. 2 in 2010-11; and vs. UConn, No. 2 in 2013-14.

KFC Yum! Center Attendance

Year	Games	Avg. Attendance	DI Rank
2010-11	15	10,859	2nd
2011-12	13	10,670	2nd
2012-13	18	9,358	3rd
2013-14	20	9,469	3rd
2014-15	17	9,515	3rd
2015-16	16	9,503	4th
2016-17	10	8,445	4th

■ **Louisville-Vanderbilt Connections** - Associate head coach Stephanie Norman, now in her 10th season at Louisville, served as an assistant coach at Vanderbilt from 2002-07. While with the Commodores, she helped the school reach the NCAA Tournament five times, including a pair of Sweet 16 appearances.

Head coach Jeff Walz's wife, previously Lauren Lueders, played at Vanderbilt. She was a four-year letterwinner and ranked second on the team her senior season in 3-pointers made with 58. She totaled 133 over her career.

■ **Dreaming of December** - As the Cardinals noticeably improve each month under head coach Jeff Walz, so too does their record. In the 12th month, Louisville boasts a 58-13 mark (.817) under its leader. In 2007-08 and 2008-09, Louisville produced consecutive 8-0 records. Last season, the program put together a 7-1 mark.

■ **Million Mark Surpassed** - Louisville has thrived in more ways than one in the KFC Yum! Center since beginning play there in 2010. Along with winning 88.1 percent of its games, Louisville hit a milestone earlier this season when attendance surpassed the one-million mark for women's basketball games.

Through 109 games in the downtown venue, Louisville averages 9,896 per contest and has welcomed more than 1.05 million fans through the doors of the KFC Yum! Center.

■ **Louisville Athletics Above the Rest** - Louisville continues to remain as one of the elite athletics departments in the country. Currently, Louisville is one of only two schools nationally (other: West Virginia) that has its football, men's basketball, and women's basketball programs in the Associated Press' top 15 (women's basketball: No. 8; men's basketball: No. 10; football: No. 15).

The Cardinals have four additional sports currently ranked among the nation's top teams in men's soccer (8th), field hockey (8th), men's swimming (8th), and women's swimming (11th). UofL's men's soccer team was the No. 4 overall seed in the NCAA Championship and advanced to the Elite Eight. UofL's women's cross country team advanced to the NCAA Championship for the first time in school history and the Cardinals' field hockey team competed in the NCAA Tournament.

■ **Achieving Nonconference Success** - Head coach Jeff Walz has compiled an impressive 114-30 record (.792) against nonconference foes in his 10 years at the helm of the program. Two times - in 2008-09 and 2013-14 - he rolled through nonconference play with just one loss, sporting 13-1 and 12-1, records, respectively.

■ **Crashing the Boards** - Louisville's superior size and athleticism was on full display in the Cardinals' victory over Lafayette.

Paced by Myisha Hines-Allen's career-tying high 14 rebounds, Louisville finished with a 62-28 advantage on the boards. The Cardinals' rebounding total is tied for third most in a game in school history and is the most since the 2013-14 team set the program record with 68 on Nov. 9, 2013, against Loyola Chicago.

■ **Relentless Defense** - Louisville has forced at least 20 turnovers in eight of 13 games this season. Maybe the more impressive note, though, is the Cardinals matched a season best against Bowling Green, when they forced the Falcons into 32 turnovers.

The Cardinals pressured South Dakota State into 30 turnovers on Dec. 14, more than three times the number of South Dakota State's field goals (9).

Opponents are turning the ball over 22.2 times per game, leading to 319 points for Louisville - or 24.5 points per contest.

■ **Paint Points a Positive** - The Cardinals have taken advantage of points in the paint, averaging 38.0 in the area. Louisville has surpassed the 30-point plateau 10 times this year, including a season-best 56 - the most since tallying 58 against Iowa on Dec. 14, 2014.

The Cardinals, who averaged 31.2 points in the paint a year ago (1,062 points). The 2014-15 team scored a program best 72 in the area against Western Kentucky.

Nonconference Success under Walz	
Season	Record
2007-08	11-2
2008-09	13-1
2009-10	8-5
2010-11	10-5
2011-12	11-2
2012-13	12-2
2013-14	12-1
2014-15	15-3
2015-16	11-7
2016-17	11-2
Total	114-30

ATLANTIC COAST CONFERENCE

(Standings through Dec. 19)

School	ACC	Overall	Streak
Virginia Tech		11-0	W11
Florida State		11-1	W10
Duke		10-1	W6
Miami		10-1	W10
Notre Dame		10-1	W2
Louisville		11-2	W5
Clemson		9-2	W1
Georgia Tech		9-2	L1
North Carolina		8-2	L1
Virginia		8-2	W3
NC State		10-3	W1
Pittsburgh		8-3	W1
Syracuse		8-3	W4
Wake Forest		8-3	W1
Boston College		5-6	W3

Upcoming Games in the ACC



Wednesday, Dec. 21

VCU at Wake Forest	11 a.m.
Dartmouth at Boston College	11 a.m.
Radford at Virginia Tech	1 p.m.
Texas A&M at Syracuse	3:15 p.m.
Villanova at Duke (ACCN Extra)	7 p.m.
UMES at Virginia (ACCN Extra)	7 p.m.
Clemson at Jacksonville St.	7 p.m.
Florida State at Mercer	7 p.m.

Thursday, Dec. 22

Georgia Tech at Middle Tennessee	7:30 p.m.
----------------------------------	-----------

Tuesday, Dec. 27

Notre Dame at Chattanooga	6:30 p.m.
---------------------------	-----------

Wednesday, Dec. 28

Coppin State at North Carolina	2 p.m.
UMBC at Virginia (ACCN Extra)	7 p.m.

Thursday, Dec. 29

Pitt at Duquesne	2 p.m.
Bethune-Cookman at Clemson	7 p.m.
Kentucky at Duke (ACCN Extra)	7 p.m.
Princeton at Georgia Tech	7 p.m.
Florida State at Miami (ACCN Extra)	7 p.m.
Notre Dame at NC State (ACCN Extra)	7 p.m.
Dayton at Virginia (ACCN Extra)	7 p.m.

Friday, Dec. 30

Maine at Boston College	2 p.m.
SC State at North Carolina	2 p.m.
Delaware State at Virginia Tech	7 p.m.

Saturday, Dec. 31

Wake Forest at James Madison	4:30 p.m.
------------------------------	-----------

■ **Stretches and Spurts** - Through 13 games this year, Louisville has produced 37 runs of 8-0 or better (six against Evansville), including a 21-0 stretch against UT Martin. Defensively, the Cardinals have forced their opponents into 37 scoring droughts of at least three minutes (four by Evansville), including a 7:36 drought by South Dakota State.

Last year, through 34 games, the Cardinals totaled 61 runs of 8-0 or better and 96 scoring droughts of at least three minutes.

■ **Wade Watch List** - Louisville juniors Myisha Hines-Allen and Mariya Moore were named two of the 25 "Wade Watch" list candidates for the 2017 Wade Trophy that recognizes the national player of the year.

Louisville is one of six schools to have multiple representatives on the list.

The Wade Trophy — now in its 40th year — is the oldest and most prestigious national player of the year award in college women's basketball. It is named in honor of the late, legendary Delta State University head coach Lily Margaret Wade, who won three consecutive national championships with the Lady Statesmen.

■ **Trio to Watch** - Sophomore Asia Durr, Myisha Hines-Allen, and Mariya Moore were three of the top-50 players nationally named to the Naismith Trophy Women's 50 preseason list. The Cardinals' trio of selections are tied for the most in the ACC and tied for the second most in the country.

Named in honor of Dr. James Naismith, the creator of the game of basketball, the first Naismith trophy was awarded in 1969. The trophy was sculpted by Marty C. Dawe of Atlanta and has become among the most prestigious national honors awarded each year to top basketball players in the nation.

■ **Louisville Chosen Second in ACC Preseason Polls** - The Cardinals were picked to finish second in both the Atlantic Coast Conference's Blue Ribbon Panel and coaches' polls. Louisville received 758 points from the Blue Ribbon Panel, including eight first-place votes, while earning 209 points from the league's 15 head coaches. Notre Dame was picked to win the title in both polls. The conference tournament will be held at the HTC Center from March 1-5 in Conway, S.C.

2016-17 ACC Preseason Media Poll

1. Notre Dame	9. Georgia Tech
2. Louisville	10. Virginia
3. Florida State	11. Wake Forest
4. Syracuse	12. Virginia Tech
5. Miami (Fla.)	13. Pittsburgh
6. Duke	14. Boston College
7. NC State	15. Clemson
8. North Carolina	

■ **Melting Pot** - Louisville's 2016-17 roster continues last year's pattern of being diverse. Of the 15 student-athletes on its roster, 11 different states are represented (Arizona, California, Colorado, Florida, Georgia, Illinois, Kentucky, New Jersey, New York, Pennsylvania, Texas).

■ **Tournament No. 50** - When Louisville played in the Basketball Hall of Fame Women's Challenge, it marked the program's 50th regular-season tournament in school history. The Cardinals, who went 3-1 in the event, have been crowned champions in 17 of those.

Most recently in 2013-14, when the program defeated three schools before earning an upset win at No. 11 Oklahoma in the Preseason WNIT. Interestingly, the Cardinals' season-opening win and first victory in the tournament was against Taylor Johnson's Loyola Chicago team. Johnson had 18 points and three assists in the 101-54 loss.

■ **Preseason Conference Accolades** - Myisha Hines-Allen was voted the ACC's preseason Player of the Year - by both the coaches and league's media and SIDs - and also named to the all-conference team with Mariya Moore and Asia Durr. Louisville was the only school with three selections on both preseason teams.

Hines-Allen, who capped her sophomore campaign as the school's second player of the year, is the first student-athlete in program history to earn a league's preseason honor. She also earned preseason Associated Press All-America honorable mention accolades and was named an ESPN preseason second team All-America.

■ **(Un)Hampered by Height** - With the addition of 6-foot-4 freshmen Ciera Johnson and Kylee Shook, Louisville owns one of the taller teams in the ACC. The Cardinals also have significant height with Sam Fuehring and Cortnee Walton, who are each 6-foot-3, giving Louisville and Boston College four players who are at least 6-foot-3. Duke, Virginia, and Georgia Tech each have five players 6-foot-3 or taller.

THE LAST TIME LOUISVILLE ...

Defeated an AP Top 25 team:

Dec. 4, 2016 - No. 17 Kentucky, W, 69-67 (OT)

Scored 100 or more points:

Nov. 11, 2016 - UT Martin, W, 100-57

Scored less than 50 points:

Feb. 8, 2015 - Pittsburgh, W, 48-35

Allowed 100 or more points:

Dec. 20, 2009 - Kentucky, L, 101-67

Held a team to less than 50 points:

Dec. 18, 2016 - Evansville, W, 89-47

Won an overtime game:

Dec. 4, 2016 - No. 17 Kentucky, W, 69-67 (OT)

Lost an overtime game:

March 4, 2012 - St. John's, L, 68-61 (OT)

Played a double-overtime game:

March 8, 2009 - Rutgers, W, 87-82 (2OT)

THE LAST TIME UofL HAD ...

A player score 30 points:

34, Asia Durr vs. Bowling Green (11/19/16)

A player score 35 points:

38, Shoni Schimmel vs. USF (1/30/13)

A player score 40 points:

43, Angel McCoughtry vs. Providence (1/31/09)

Two players score 20 points in a game:

27 Mariya Moore, 22 Asia Durr vs. Middle Tenn. (11/16/16)

Three players score 20 points in a game:

24, Jill Morton; 24, Sharon Bellamy; 22, Roscelle Bullock vs. Memphis (1/22/99)

A player grab 15 boards:

15, Asia Taylor vs. Rutgers (2/23/14)

A player grab 20 boards:

20, Angel McCoughtry vs. Syracuse (2/3/09)

Two players grab 10 rebounds in a game:

10 Briahanna Jackson, 10 Cortnee Walton vs. Kentucky (12/4/16)

A player dish out 12 assists:

12, Mariya Moore vs. Charleston (12/20/15)

A player record five or more steals:

5, Taylor Johnson vs. College of Charleston (12/16/16)

A player with five or more blocked shots:

5, Sara Hammond vs. USF (3/23/15)

Three players record a double-double:

A. McCoughtry, C. Bingham, D. Byrd vs. Syracuse (2/3/09)

Seven players score in double figures:

S. Hammond, M. Hines-Allen, M. Moore, B. Smith, J. Schimmel, M. Deines, E. Henderson vs. Old Dominion (12/15/14)

A player record a triple-double:

22 pts., 10 rbs., 10 assts. Bria Smith vs. WKU (11/25/14)

A player with 7 or more 3-pointers:

8, Asia Durr vs. Bowling Green (11/19/16)

A player with 10 or more made free throws:

12, Mariya Moore vs. Georgia Tech (1/3/16)

A player hit a last-second shot to win a game:

Mariya Moore, :03 vs. NC State, 92-90 (1/17/16)



■ **Success against AP Top 25** - Following the win over 17th-ranked Kentucky, Louisville has defeated a stellar 28 schools over the last seven seasons that were ranked in the Associated Press' top 25.

In 2015-16, the Cardinals knocked off No. 19 Michigan State in the ACC/Big Ten Challenge, No. 15 Florida State 79-69, No. 18 Duke 65-48, No. 19 South Florida 67-50, and then 17th-ranked Miami 79-51.

Wins over AP Top 25 Teams in 2015-16		
Date	Opponent	Decision
12/3/15	at No. 19 Michigan State	W, 85-78
1/1/16	No. 15 Florida State	W, 79-69
1/10/16	No. 18 Duke	W, 65-48
2/15/16	No. 19 South Florida	W, 67-50
2/25/16	No. 17 Miami	W, 79-51

During 2010-11, Louisville defeated five schools in the top 25, including three in the top 10: Kentucky (No. 8), DePaul (No. 7), and Xavier (No. 5). After defeating one in 2011-12, the Cardinals again defeated five ranked in AP Poll in both 2012-13 and 2013-14. In 2013-14, UofL defeated No. 14 LSU and No. 11 Oklahoma within a three-day window, and then posted six ranked victories in 2014-15.

■ **Johnson Joins Cardinals** - Highly talented guard Taylor Johnson transferred to Louisville from Loyola Chicago during the summer of 2016.

The two-time all-conference honoree, who is playing her final season of eligibility, is off to a solid start with the Cardinals. She is third on the team with 33 assists in 13 games - with 18 turnovers - and has the second-most steals with 21.

Johnson averaged 14.2 points, 4.9 rebounds, 3.3 assists, and 2.5 steals in 93 games at Loyola Chicago. In her final season there, she started all 30 games and averaged the league's eighth-best scoring mark at 15.1 points to go with 4.9 rebounds.

The 5-foot-7 guard ranked sixth in school history in career points (1,325), fourth in scoring average, tied for third in steals (234), and 11th in assists (306).

■ **Cardinals on the Road** - Since Jeff Walz became head coach at Louisville in 2007, the Cardinals have a 118-64 record (.648) in games away from home (includes 36-20 record for neutral site games).

In 2015-16, the Cardinals owned a 13-5 record away from the KFC Yum! Center (includes 2-3 neutral record). Louisville forced 18.0 turnovers per game in those contests, held a +6.6 rebounding advantage, connected on 72.7 percent of its free throws, and boasted +8.1 scoring margin.

■ **Unmatched Exposure** - Head coach Jeff Walz was one of six Division I women's basketball head coaches and 12 participants invited to the second Women's Basketball National Media Day, hosted by the NCAA and ESPN, on ESPN's campus in Bristol, Conn.

The 10th-year coach conducted multiple interviews with regional and national media, recorded a national podcast with ESPN, WNBA, and ACC analyst LaChina Robinson, held an interview with ESPN.com national women's college basketball writer Mechelle Voepel, and participated in a one-on-one interview with ESPN analyst Doris Burke.

■ **Highlighting the Exhibition** - Louisville's 97-50 exhibition victory over Lindsey Wilson proved to be a confidence booster for Asia Durr. Head coach Jeff Walz continually called for the sophomore to shoot the ball more, and she finished with a game-high 19 points, shooting 7-of-10 from the field. Last year, in 31 games, she only had 10 field goal attempts 12 times.

Freshmen Ciera Johnson (14 points in 20 minutes), Jazmine Jones (15 points on 7-of-8 shooting, 4 rebounds, 2 steals), and Bionca Dunham (9 points, 10 rebounds, 4 blocks in 19 minutes) also had solid performances.

Collectively, Louisville shot 54.9 percent from the field, while forcing 26 turnovers.

■ **Hines-Allen Continues to Collect Honors** - Myisha Hines-Allen picked up where she left off as a sophomore, receiving honors. The junior, named an Associated Press honorable mention All-American, has earned additional national attention following the announcement of being named the preseason ACC Player of the Year.

Hines-Allen, who averaged a remarkable 18.0 points and 8.1 rebounds in league play last year, was named an All-American by four other national outlets: Sporting News (first team), Lindy's (second team), Athlon Sports (second team), and College Sports Madness (second team).

CAREER 20-POINT GAMES

Myisha Hines-Allen (17)

Kentucky.....	12/4/16.....	26
Central Arkansas.....	3/18/16.....	25
Syracuse.....	3/5/16.....	27
Georgia Tech.....	3/4/16.....	22
Pittsburgh.....	2/28/16.....	25
Virginia.....	2/18/16.....	22
South Florida.....	2/15/16.....	25
Pittsburgh.....	2/11/16.....	29
Syracuse.....	1/25/16.....	27
Charleston.....	12/20/15.....	22
Tennessee Tech.....	12/18/15.....	20
IUPUI.....	12/13/15.....	22
Dayton.....	11/29/15.....	20
Syracuse.....	1/29/15.....	23
Miami (Fla.).....	1/25/15.....	23
Wake Forest.....	1/11/15.....	20
Valparaiso.....	11/30/14.....	21

Briahanna Jackson (16)

DePaul.....	3/20/16.....	20
IUPUI.....	12/13/15.....	23
W. Kentucky.....	11/21/15.....	24
California.....	11/15/15.....	21
Connecticut.....	1/1/14.....	28
Houston.....	12/28/13.....	24
Flagler.....	12/7/13.....	31
Georgia State.....	11/19/13.....	34
Houston.....	3/13/13.....	22
Houston.....	2/28/13.....	22
Memphis.....	2/10/13.....	29
Tulane.....	1/31/13.....	27
Southern Miss.....	1/20/13.....	21
Missouri State.....	11/21/12.....	34
Louisville.....	11/20/12.....	21
St. John's (N.Y.).....	11/11/12.....	20

Mariya Moore (15)

Middle Tennessee.....	11/16/16.....	27
Pittsburgh.....	2/11/16.....	21
North Carolina.....	2/4/16.....	22
Wake Forest.....	1/31/16.....	26
NC State.....	1/17/16.....	31
Georgia Tech.....	1/3/16.....	25
Florida State.....	1/1/16.....	20
Michigan State.....	12/03/15.....	20
Dayton.....	11/29/15.....	23
California.....	11/15/15.....	20
North Carolina.....	2/15/15.....	28
Syracuse.....	1/29/15.....	21
Georgia Tech.....	1/2/15.....	22
Ball State.....	11/23/14.....	22
IUPUI.....	11/14/14.....	22

Asia Durr (9)

Coll. of Charleston.....	12/16/16.....	20
Maryland.....	12/1/16.....	20
Bowling Green.....	11/19/16.....	34
Middle Tennessee.....	11/16/16.....	22
UT Martin.....	11/11/16.....	24
Syracuse.....	3/5/16.....	23
North Carolina.....	2/4/16.....	21
NC State.....	1/17/16.....	21
Michigan State.....	12/03/15.....	20

■ **Lofty Expectations** - Louisville, returning eight letterwinners from a season ago, including all five starters, attracted plenty of attention from the preseason publications.

In addition to being selected fifth in the Associated Press preseason poll and eighth in the USA Today/Coaches' rankings, the Cardinals also rank in the top eight by five other outlets: third by Lindy's and Sporting News, fifth by SLAM Magazine, sixth by Athlon Sports, and seventh by the U.S. Basketball Writers' Association.

Though early, the Cardinals earned a No. 1 seed in the first ESPN Bracketology of the year (other No. 1 seeds: UConn, Notre Dame, and South Carolina).

■ **espnW Praises Hines-Allen, Moore** - espnW selected Myisha Hines-Allen and Mariya Moore as two of the top-25 players in the country for 2016-17. Hines-Allen was tabbed 11th, while Moore was voted 22nd.

Over the course of the season, the Cardinals will face nine other players that were picked in the top 25.

■ **Returning from Cuba** - The Cardinals became the first NCAA women's basketball program to visit and play in Cuba, enjoying a seven-day trip from Aug. 6-12. Louisville played three games against the Cuban national team, winning two, participated in a guided tour of two different cities in the country, shopping in the Cuban markets, salsa lessons, and time at a resort in Varadero.

■ **Cardinals Ink Another No. 1 Class** - Head coach Jeff Walz and his staff inked the top-ranked recruiting class in the country for 2017, Louisville's second No. 1 class in three seasons, according to espnW HoopGurlz.

The three-member class, with all five-star prospects, consists of **Lindsey Duvall**, a 5-foot-9 guard from Mt. Washington, Ky.; **Dana Evans**, a 5-foot-6 guard from Gary, Ind.; and, **Loretta Kakala**, a 6-foot-3 forward from Manteca, Calif.

Duvall, No. 22-ranked player in the class, eclipsed 1,000 career varsity points during her sophomore campaign in 2014, averaging 23.7 points and 7.5 rebounds that year. While missing most of her junior season after having a tumor removed from just below her left knee, she returned to produce 18.7 points and 8.1 rebounds in seven contests, while leading her program to the state championship game. Evans, ranked seventh overall in the class, averaged a remarkable 35.8 points, 5.4 rebounds, and 5.0 assists in her junior season. She was named a Naismith High School All-American in 2016.

Kakala, the 25th-best player in the class, was a first-team all-district player last year and averaged 16 points and 8.5 rebounds in her junior season.

■ **UofL Earned Sixth-Consecutive 20-Win Season** - With the victory over No. 19 South Florida on Feb. 15 during the 2015-16 campaign, Louisville notched its 20th win of the year. It marked the program's sixth-consecutive season in which it achieved at least 20 wins and the eighth time achieving the plateau under head coach Jeff Walz.

In the stretch that begins in the 2010-11 season, Louisville has compiled a 166-52 mark (.761). Against league competition, the Cardinals are a stellar 74-24 (.755) between the BIG EAST (2010-13), the American Athletic Conference (2013-14), and the ACC (2014-present).

Since 2010, Louisville has registered one 30-win season (33-5, 2013-14) along with 20-win seasons the other five years (22-13, 2010-11; 23-10, 2011-12; 29-9, 2012-13; 27-7, 2014-15; 26-8, 2015-16).

■ **Making a 180-Degree Turn** - Louisville made quite the turnaround after a slow start to the 2015-16 campaign.

The Cardinals, ranked eighth in the final AP Poll, won 25 of their last 29 games, building a 15-game winning streak along the way, and cruised to a second-place finish in the Atlantic Coast Conference. Three of Louisville's losses in the stretch came to top-25 teams, while the program defeated five ranked schools.

Louisville outscored opponents by an average of 15 points, held them to 39.8 percent shooting, and forced 18.5 turnovers per game. Over that timeframe, Myisha Hines-Allen paced the Cardinals in scoring (18.3), rebounding (8.6), and shooting (56.8).

UofL IN '15-16 NCAA STATISTICS		
<i>(final statistics)</i>		
Rank.....	Category	Stat
32.....	Won-Lost Percentage	76.5
22.....	Scoring Margin.....	+12.7
45.....	Scoring Offense	72.2
75.....	Scoring Defense	59.4
44.....	Steals Per Game.....	9.5
38.....	FG Percentage.....	43.5
23.....	Assists Per Game	16.1
32.....	Turnover Margin.....	+3.68
36.....	Rebound Margin	+6.8
26.....	Off. Rebounds/Game	15.4

'16-17 RECOGNITION & HONORS

Asia Durr

- Wooden Award Preseason Top 30
- Naismith Trophy Preseason Watch List
- ACC Player of the Week (Nov. 21)
- Blue Ribbon Panel Preseason All-ACC Team
- Coaches' Preseason All-ACC Team

Myisha Hines-Allen

- Wooden Award Preseason Top 30
- Naismith Trophy Preseason Watch List
- Wade Trophy Watch List
- Blue Ribbon Panel Preseason ACC Player of the Year
- Coaches' Preseason ACC Player of the Year
- Blue Ribbon Panel Preseason All-ACC Team
- Coaches' Preseason All-ACC Team
- ESPN preseason second team All-American
- Associated Press honorable mention All-American
- Sporting News preseason first team All-American
- Lindy's preseason second team All-American
- Athlon Sports preseason second team All-American

Mariya Moore

- Wooden Award Preseason Top 30
- Naismith Trophy Preseason Watch List
- Wade Trophy Watch List
- Blue Ribbon Panel Preseason All-ACC Team
- Coaches' Preseason All-ACC Team

Arica Carter

- Allstate Good Works Team nominee

■ **Statistically Recapping 2015-16** - The Cardinals finished the 2015-16 season ranked in the top 35 in multiple categories: scoring margin, assists per game, turnover margin, and offensive rebounds per game.

Individually, Myisha Hines-Allen ranked 20th in field goals made (246), 25th in field goal percentage (54.7), and 66th in final points (581). Cortnee Walton also boasted a top-25 mark, holding the 22nd-best average for offensive rebounds per game (4.0).

■ **Top-10 Worthy Performances** - Myisha Hines-Allen, Mariya Moore, and Asia Durr each logged single-season marks in 2015-16 that rank among the top 10 in the school's annals.

Hines-Allen hit 246 field goals, fifth most in a season in school history, totaled the fourth-most double-doubles at 11, and logged 581 points and 277 rebounds - marks that both rank ninth best.

Moore connected on a stellar 77 treys, seventh most in a season, while her 125 made free throws surpassed her freshman total for eighth most. Moore is one of just two players (Angel McCoughtry) to have at least two entries for most free throws in a season.

Durr connected on 84.1 percent of her free throws, the seventh-best mark in a season.

0 Briahanna Jackson

G 5-6 r-Sr. - 1L Tampa, Fla. (UCF)



- Reached double-digit points for the fourth time this season, tallying 11 against Evansville.
- Collected a career-high 10 assists against Western Kentucky.
- Has a team-leading 27 steals and is first in assists with 63. She ranks 22nd nationally in assist-turnover ratio (2.86) and 30th in assists.
- Recorded eight assists for the second-consecutive game, dishing out eight versus Kentucky to go with 10 rebounds.
- Earned first start of the season, totaling nine points, five rebounds, and three steals against Maryland. She had a game-high eight assists and no turnovers.
- Tallied double-digit points for the third time this season, scoring 10 against South Carolina on 5-of-8 shooting.
- Registered a season-best six steals against Bowling Green.
- Opened the year with a solid all-around performance, totaling 13 points, four assists, and four steals against UT Martin.
- Named to the 2015-16 All-ACC women's basketball academic team.
- Started 33 of 34 games played, averaging 11.1 points, 40 rebounds, 2.8 assists, and 2.0 steals.
- Ranked 28th in the ACC in scoring (11.1) and seventh in steals (2.0).
- Recorded fourth 20-point game of the season, 23rd in double figures, totaling 20 on 9-of-18 shooting against DePaul in the NCAA Tournament second round. She also had six rebounds and five assists.
- Reached 1,000th career point on a layup with 15 seconds to go against the Virginia Tech (769 points at UCF).
- Averaged 16.3 points, 3.7 rebounds, and 2.8 steals over a two-year span at UCF (2012-14); totaled 769 points over that stretch behind 39.7 percent shooting, including 82 3-pointers.
- Named the 2012-13 Conference USA Freshman of the Year after producing 15.7 points and 3.3 rebounds per game; broke the 15-year-old conference record with 89 steals.
- Born Sept. 19, 1993 ... majoring in criminal justice.

0 Briahanna Jackson Season Highs

Points ... 13 vs. UT Martin (11/11)
 Reb. 10 vs. Kentucky (12/4)
 Asst. 10 vs. W. Kentucky (12/11)
 Blocks .. 1 vs. UT Martin (11/11), Chattanooga (11/21)
 Steals ... 6 vs. Bowling Green (11/19)
 FGM 6 vs. UT Martin (11/14)
 FGA 16 vs. Maryland (12/1)
 3FGM ... 1 (3 times) *latest*: vs. Evansville (12/18)
 3FGA ... 4 vs. Bowling Green (11/19)
 FT 5 vs. Middle Tennessee (11/16)
 FTA 6 vs. Middle Tennessee (11/16)

0 Briahanna Jackson Career Highs

Points ... 34 vs. Georgia State (11/19/13)
 vs. Missouri State (11/21/12)
 Reb. 11 vs. Memphis (2/10/13)
 vs. Tulane (1/31/13)
 Asst. 10 vs. W. Kentucky (12/11/16)
 Blocks .. 3 vs. Howard (11/30/13)
 Steals ... 8 vs. Missouri State (11/21/12)
 FGM 13 vs. Flagler (12/7/13)
 FGA 30 vs. Missouri State (11/21/12)
 3FGM ... 6 vs. Connecticut (1/1/14)
 3FGA ... 13 vs. Missouri State (11/21/12)
 FT 12 vs. Memphis (2/10/13)
 FTA 17 vs. Memphis (2/10/13)

0 Briahanna Jackson Game-by-Game

Opponent	Date	GS	Min	FG	FGA	Pct	3-Point				Rebounds				PF	FO	A	TO	Blk	Stl	Pts	Avg	
							FG	FGA	Pct	FT	FTA	Pct	Off	Def									Tot
at UT MARTIN	11/11/16	19	6	8	.750	0	0	.000	1	3	.333	1	1	2	2.0	1	0	4	3	1	4	13	13.0
BELMONT	11/13/16	22	3	7	.429	0	2	.000	0	0	.000	0	1	1	1.5	0	0	4	1	0	0	6	9.5
at MIDDLE TENN.	11/16/16	16	1	2	.500	0	1	.000	5	6	.833	2	0	2	1.7	3	0	2	2	0	0	7	8.7
BOWLING GREEN	11/19/16	28	3	9	.333	0	4	.000	1	1	1.000	0	3	3	2.0	1	0	3	1	0	6	7	8.3
LAFAYETTE	11/20/16	16	5	6	.833	1	2	.500	0	0	.000	0	3	3	2.2	1	0	3	1	0	3	11	8.8
CHATTANOOGA	11/21/16	25	4	6	.667	0	2	.000	0	0	.000	0	3	3	2.3	1	0	5	2	1	1	8	8.7
vs S. CAROLINA	11/27/16	21	5	8	.625	0	1	.000	0	1	.000	0	1	1	2.1	4	0	3	1	0	1	10	8.9
MARYLAND	12/01/16 *	36	4	16	.250	0	4	.000	1	3	.333	2	3	5	2.5	2	0	8	0	0	3	9	8.9
KENTUCKY	12/04/16 *	41	2	11	.182	0	2	.000	1	2	.500	2	8	10	3.3	4	0	8	0	0	5	5	8.4
W. KENTUCKY	12/11/16 *	31	1	8	.125	0	1	.000	2	4	.500	1	3	4	3.4	2	0	10	4	0	1	4	8.0
S. DAKOTA ST.	12/14/16 *	21	2	4	.500	0	1	.000	0	0	.000	1	4	5	3.5	2	0	6	2	0	2	4	7.6
C OF CHAR.	12/16/16 *	18	1	3	.333	0	1	.000	0	0	.000	0	2	2	3.4	3	0	5	3	0	0	2	7.2
EVANSVILLE	12/18/16 *	22	5	9	.556	1	3	.333	0	0	.000	0	2	2	3.3	0	0	2	2	0	1	11	7.5

0 Briahanna Jackson Career Statistics

Year	GP	GS	Min	Avg	FG	FGA	Pct	3FG	3FGA	Pct	FT	FTA	Pct	OReb	DReb	Reb	Avg	PF	FO	Ast	TO	Blk	Stl	Pts	Avg
2012-13*	33	33	162	4.9	173	535	.323	63	193	.326	111	158	.703	36	146	182	5.5	104	3	74	127	4	110	520	15.8
2013-14*	14	14	472	33.7	95	237	.401	30	83	.361	29	54	.537	11	56	67	4.8	40	1	35	56	8	44	249	17.8
2015-16	34	33	955	28.1	140	378	.370	37	122	.303	59	85	.694	40	95	135	4.0	72	2	96	74	9	68	376	11.1
2016-17	13	6	316	24.3	42	97	.433	2	24	.083	11	20	.550	9	34	43	3.3	24	0	63	22	2	27	97	7.5
TOTAL	47	39	1271	27.0	182	475	.383	39	146	.267	70	105	.667	49	129	178	3.8	96	2	159	96	11	95	473	10.1
All*	94	86	1905	20.3	450	1247	.361	132	422	.313	210	317	.662	96	331	427	4.5	240	6	268	279	23	249	1242	13.2

2 Myisha Hines-Allen

F 6-2 Jr. - 2L Montclair, N.J. (Montclair HS)



- Named to the "Wade Watch" list for the Wade Trophy Award, the Naismith Trophy Women's Player of the Year preseason watch list, and the Wooden Award Preseason Top 30.
- Collected second double-double in three games, third this season, with 14 points and 12 rebounds - in 15 minutes - against College of Charleston. She also tied a season high with three steals. Her 15 double-doubles rank 13th all-time in school history.
- Built second double-double of the season, 14th of career, with 16 points and 11 rebounds against Western Kentucky. She shot 7 of 12 from the floor.
- Logged a season-best 26 points on 13-of-22 shooting against Kentucky. She had 14 points in the second half and added four in overtime.
- Scored 16 points on 7-of-16 shooting against Maryland, also accumulating seven rebounds.
- Registered double-digit rebounds on five occasions already, including a career-tying best 14 against Lafayette.
- Became the 26th member of the school's 1,000-point club after a layup at Middle Tennessee. She now ranks 18th, with 1,129 points, and is 57 points away from passing Joan Dunaway Burks (1,185 points, 1977-81) for 17th.
- Named the Blue Ribbon Panel and coaches' preseason ACC Player of the Year. She also was named a preseason AP All-America honorable mention.
- Voted the 2015-16 Blue Ribbon Panel ACC Player of the Year and named to both all-ACC first teams. She also was voted to the ACC All-Tournament first team.
- Tabbed a College Sports Madness first team All-American and espnW third team All-American. She also was a Wade Trophy finalist.
- Started 30 of 33 games played and averaged 17.6 points on 54.7 shooting and 8.4 rebounds.
- Ranked third in the ACC in scoring, rebounding, and field goal percentage, seventh in free throw percentage (.800), second in defensive rebounds (5.4), and tied for sixth in offensive rebounds (3.0). In conference-only stats, she was the only player ranked in the top five in scoring and rebounding: second in scoring (18.0) and rebounding (8.1). Nationally, she was 20th in field goals made (246), 25th in field goal percentage, and 66th in total points (581).
- Logged multiple single-season figures that rank in the school's top 10: points (No. 9), field goals (No. 5), total rebounds (No. 9), and double-doubles (11, tied for fourth).
- Born May 30, 1996 ... majoring in sport administration.

2 Myisha Hines-Allen Season Highs

Points.... 26 vs. Kentucky (12/4)
 Rebs. 14 vs. Lafayette (11/20)
 Asst..... 5 vs. Lafayette (11/20)
 Blocks... 2 vs. Bowling Green (11/19)
 Steals.... 3 vs. Bowling Green (11/19), Charleston (12/16)
 FGM..... 13 vs. Kentucky (12/4)
 FGA 22 vs. Kentucky (12/4)
 3FGM.... 2 vs. Middle Tennessee (11/16)
 3FGA 2 vs. Middle Tennessee (11/16)
 FT 4 vs. Charleston (12/16)
 FTA 6 vs. Charleston (12/16)

2 Myisha Hines-Allen Career Highs

Points ... 29 vs. Pittsburgh (2/11/16)
 Reb. 14 vs. Lafayette (11/20)
 vs. Charleston (12/20/15)
 Asst. 5 (3 times) *latest*: vs. Lafayette (11/20/16)
 Blocks .. 3 vs. USF (2/15/16)
 vs. Florida State (1/1/16)
 Steals ... 4 vs. Dartmouth (12/15/15)
 FGM 13 vs. Kentucky (12/4/16)
 vs. Syracuse (1/25/16)
 FGA 23 vs. Syracuse (1/25/16)
 3FGM ... 2 vs. Middle Tennessee (11/16)
 3FGA ... 2 vs. Middle Tennessee (11/16)
 vs. Dayton (11/29/15)
 FT 9 vs. Syracuse (3/5/16)
 vs. Miami (2/25/16)
 FTA 10 vs. Miami (2/25/16)

2 Myisha Hines-Allen Game-by-Game

Opponent	Date	GS	Min	FG	FGA	Pct	3-Point			FT	FTA	Pct	Rebounds				PF	FO	A	TO	Blk	Stl	Pts	Avg
							FG	FGA	Pct				Off	Def	Tot	Avg								
at UT MARTIN	11/11/16	*	17	6	11	.545	0	0	.000	0	0	.000	3	7	10	10.0	2	0	2	0	1	1	12	12.0
BELMONT	11/13/16	*	15	2	5	.400	0	0	.000	0	0	.000	0	8	8	9.0	1	0	1	2	0	2	4	8.0
at MIDDLE TENN.	11/16/16	*	22	6	7	.857	2	2	1.000	3	3	1.000	0	7	7	8.3	2	0	4	3	0	1	17	11.0
BOWLING GREEN	11/19/16	*	24	6	10	.600	0	0	.000	1	2	.500	3	2	5	7.5	0	0	4	0	2	3	13	11.5
LAFAYETTE	11/20/16	*	17	3	9	.333	0	0	.000	1	2	.500	6	8	14	8.8	2	0	5	2	1	2	7	10.6
CHATTANOOGA	11/21/16	*	26	3	9	.333	1	1	1.000	0	0	.000	4	6	10	9.0	0	0	2	3	1	0	7	10.0
vs S. CAROLINA	11/27/16	*	20	1	8	.125	0	3	.000	0	0	.000	4	2	6	8.6	5	1	0	3	0	0	2	8.9
MARYLAND	12/01/16	*	32	7	16	.438	0	1	.000	2	3	.667	2	5	7	8.4	3	0	2	1	0	0	16	9.8
KENTUCKY	12/04/16	*	27	13	22	.591	0	1	.000	0	2	.000	3	2	5	8.0	5	1	0	5	2	0	26	11.6
W. KENTUCKY	12/11/16	*	28	7	12	.583	0	0	.000	2	2	1.000	5	6	11	8.3	0	0	2	1	1	0	16	12.0
S. DAKOTA ST.	12/14/16	*	21	5	11	.455	0	0	.000	0	1	.000	1	2	3	7.8	1	0	0	3	0	2	10	11.8
C OF CHAR.	12/16/16	*	15	5	10	.500	0	0	.000	4	6	.667	6	6	12	8.2	0	0	2	1	0	3	14	12.0
EVANSVILLE	12/18/16	*	12	1	3	.333	0	0	.000	0	0	.000	0	6	6	8.0	3	0	1	0	0	2	2	11.2

2 Myisha Hines-Allen Career Statistics

Year	GP	GS	Min	Avg	FG	FGA	Pct	3FG	3FGA	Pct	FT	FTA	Pct	OReb	DReb	Reb	Avg	PF	FO	Ast	TO	Blk	Stl	Pts	Avg
2014-15	34	28	681	20.0	174	312	.558	0	1	.000	54	86	.628	67	98	165	4.9	80	1	31	50	12	20	402	11.8
2015-16	33	30	957	29.0	246	450	.547	1	8	.125	88	110	.800	98	179	277	8.4	86	2	36	59	25	36	581	17.6
2016-17	13	13	276	21.2	65	133	.489	3	8	.375	13	21	.619	37	67	104	8.0	24	2	25	24	8	16	146	11.2
TOTAL	80	71	1914	23.9	485	895	.542	4	17	.235	155	217	.714	202	344	546	6.8	190	5	92	133	45	72	1129	14.1

3 Sam Fuehring

F 6-3 So. - 1L Wanaque, N.J. (Immaculate Conception HS)



- Compiled six points and four rebounds in 10 minutes against College of Charleston.
- Played 15 minutes against Lafayette, totaling 13 points on a career-tying best 6-of-6 shooting.
- Fourth on the team, using pro-rated minutes, with an 11.1 rebounding average.
- Saw action in 32 games last year, averaging 3.8 rebounds and 1.6 rebounds. She shot 48.0 percent from the field.
- Put together a solid performance against Central Arkansas in the NCAA Tournament first round, scoring 12 points on 6-of-9 shooting, while collecting four assists and two blocks.
- Played 14 minutes against Georgia Tech in the ACC Tournament and went 3-for-3 from the field for six points and had six rebounds.
- Named a McDonald's All-American in 2015.
- Capped four-year career at Immaculate Conception High under coach Jeff Horohonich with 2,188 points, sixth most in Bergen County history, over 600 rebounds, and more than 150 blocked shots.
- Earned The Record Girls Basketball Player of the Year in 2015 after averaging 18.2 points, 7.6 rebounds, and 2.5 assists in 31 games as a senior; reached double-digit points in 28 games, while producing 12 double-doubles.
- Played AAU basketball for the New Jersey Sparks and helped the team to a 10th-place finish at Nike Nationals during the summer of 2014; played with current Cardinals' player Myisha Hines-Allen.
- Chose Louisville over California, Dayton, Rutgers, Seton Hall, South Carolina, and Tennessee.
- Born Feb. 18, 1997 ... majoring in sport administration.

3 Sam Fuehring Season Highs

- Points ... 13 vs. Lafayette (11/20)
- Reb. 6 vs. Evansville (12/18)
- Asst. 2 vs. Bowling Green (11/19)
- Blocks .. none
- Steals ... 2 vs. Lafayette (11/20)
- FGM 6 vs. Lafayette (11/20)
- FGA 8 vs. Charleston (12/16)
- 3FGM ... none
- 3FGA ... 1 vs. Middle Tenn. (11/16), Chattanooga (11/21)
- FT 5 vs. UT Martin (11/11)
- FTA 6 vs. UT Martin (11/11)

3 Sam Fuehring Season Highs

- Points ... 14 vs. Dartmouth (12/15/15)
- Reb. 6 (3 times) *latest*: vs. Evansville (12/18/16)
- Asst. 4 vs. Central Arkansas (3/18/16)
- Blocks .. 2 vs. Central Arkansas (3/18/16)
- Steals ... 2 vs. Lafayette (11/20)
- FGM 6 (3 times) *latest*: vs. Lafayette (11/20)
- FGA 11 vs. Dartmouth (12/15/15)
- 3FGM ... 1 vs. North Carolina (2/4/16)
- vs. Purdue (11/28/15)
- 3FGA ... 2 vs. Purdue (11/28/15)
- vs. Marist (11/27/15)
- FT 5 vs. UT Martin (11/11)
- FTA 6 vs. UT Martin (11/11)
- vs. Dayton (11/29/15)

3 Sam Fuehring Game-by-Game

Opponent	Date	GS	Min	FG	FGA	Pct	3-Point			FT	FTA	Pct	Rebounds				PF	FO	A	TO	Blk	Stl	Pts	Avg
							FG	FGA	Pct				Off	Def	Tot	Avg								
at UT MARTIN	11/11/16	11	1	2	.500	0	0	.000	5	6	.833	1	0	1	1.0	2	0	0	0	0	0	7	7.0	
BELMONT	11/13/16	13	0	2	.000	0	0	.000	0	2	.000	2	2	4	2.5	1	0	0	1	0	1	0	3.5	
at MIDDLE TENN.	11/16/16	10	1	3	.333	0	1	.000	2	2	1.000	1	4	5	3.3	1	0	0	0	0	0	4	3.7	
BOWLING GREEN	11/19/16	9	1	3	.333	0	0	.000	0	0	.000	1	2	3	3.3	3	0	2	3	0	0	2	3.3	
LAFAYETTE	11/20/16	15	6	6	1.000	0	0	.000	1	4	.250	2	3	5	3.6	1	0	0	2	0	2	13	5.2	
CHATTANOOGA	11/21/16	16	1	4	.250	0	1	.000	0	0	.000	2	0	2	3.3	1	0	0	0	0	1	2	4.7	
vs S. CAROLINA	11/27/16	10	1	3	.333	0	0	.000	0	0	.000	1	0	1	3.0	2	0	1	1	0	0	2	4.3	
MARYLAND	12/01/16	2	0	0	.000	0	0	.000	0	0	.000	1	0	1	2.8	0	0	0	0	0	0	0	3.8	
S. DAKOTA ST.	12/14/16	10	2	3	.667	0	0	.000	0	1	.000	0	2	2	2.7	1	0	0	0	0	1	4	3.8	
C OF CHAR.	12/16/16	10	2	8	.250	0	0	.000	2	2	1.000	3	1	4	2.8	1	0	1	0	0	0	6	4.0	
EVANSVILLE	12/18/16	16	2	5	.400	0	0	.000	2	2	1.000	4	2	6	3.1	1	0	0	1	0	0	6	4.2	

3 Sam Fuehring Career Statistics

Year	GP	GS	Min	Avg	FG	FGA	Pct	3FG	3FGA	Pct	FT	FTA	Pct	OReb	DReb	Reb	Avg	PF	FO	Ast	TO	Blk	Stl	Pts	Avg
2015-16	32	3	339	10.6	48	100	.480	2	12	.167	22	50	.440	25	26	51	1.6	49	2	13	29	8	10	120	3.8
2016-17	11	0	122	11.1	17	39	.436	0	2	.000	12	19	.632	18	16	34	3.1	14	0	4	8	0	5	46	4.2
TOTAL	43	3	461	10.7	65	139	.468	2	14	.143	34	69	.493	43	42	85	2.0	63	2	17	37	8	15	166	3.9

4 Mariya Moore

F 6-0 Jr. - 2L Hercules, Calif. (Salesian HS)



- Named to the "Wade Watch" list for the Wade Trophy Award, the Naismith Trophy Women's Player of the Year preseason watch list, and the Wooden Award Preseason Top 30.
- Logged 12 points for the second-consecutive game, tallying the total against both College of Charleston and Evansville.
- Produced season highs of eight assists and nine rebounds in consecutive games: Kentucky and Western Kentucky.
- Scored a game-tying high 17 points against South Carolina.
- Became the 27th member of the school's 1,000-point club after converting a layup against Chattanooga. She currently boasts 1,077 points for her career, ranking 24th, and needs nine more to move into 22nd place (Valerie Owens, 1,085 points, 1976-80; Misty Smith, 1,085 points, 1994-98) on the all-time scoring list.
- Compiled a stellar performance at Middle Tennessee, pouring in 27 points on 9-of-14 shooting to go with six assists.
- Ranks ninth on the school's career 3-point chart and needs three to pass Marla Inman Eltrevoog (157 3-pointers, 1994-97).
- Named to the Blue Ribon Panel and coaches' all-ACC preseason teams.
- Voted a 2015-16 WBCA All-America honorable mention after being selected to the association's all-Region I team.
- Named to the Blue Ribbon Panel's and coaches' all-ACC first team last year.
- Started 32 of 34 games played, producing 14.1 points, 4.7 rebounds, 4.4 assists, and 1.5 steals per game. She shot 76.7 percent from the charity stripe.
- Ranked 15th in the ACC in scoring (14.1), fifth in assists per game (4.4), 11th in free throw percentage (.767), and sixth in 3-point field goals per game (2.3) and assist-turnover ratio (1.6). Nationally, she was 54th in 3-point field goals made (77), 65th in free throws made (125), and 67th in total assists (148).
- Compiled multiple top-10 marks on the school's single-season best lists. She hit 77 3-pointers, seventh most in a season. Her 125 free throws are eighth most, surpassing the mark she set during her freshman campaign.
- Scored a career-best 31 - 24 in the second half - on 10-of-19 shooting to go with seven assists to complete a comeback against NC State. She tallied the Cardinals' final four points - all free throws - over the last 17 seconds.
- Born June 10, 1996 ... majoring in communication.

4 Mariya Moore Season Highs

Points.... 27 vs. Middle Tennessee (11/16)
 Rebs. 9 vs. Kentucky (12/4), W. Kentucky (12/11)
 Asst..... 8 vs. Kentucky (12/4), W. Kentucky (12/11)
 Blocks... 1 vs. Middle Tenn. (11/16), Maryland (12/1)
 Steals.... 3 vs. Maryland (12/1)
 FGM..... 9 vs. Middle Tennessee (11/16)
 FGA 14 vs. Middle Tennessee (11/16)
 3FGM.... 3 vs. South Carolina (11/27)
 3FGA 9 vs. Kentucky (12/4)
 FT 7 vs. Middle Tennessee (11/16)
 FTA 8 vs. Middle Tennessee (11/16)

4 Mariya Moore Career Highs

Points ... 31 vs. NC State (1/17/16)
 Reb. 10 vs. DePaul (3/20/16)
 Asst. 12 vs. Charleston (12/20/15)
 Blocks .. 2 vs. Charleston (12/20/15)
 Steals ... 4 (4 times) *latest*: vs. Michigan St. (12/3/15)
 FGM 10 vs. NC State (1/17/16)
 FGA 19 vs. NC State (1/17/16)
 3FGM ... 6 vs. Ball State (11/23/14)
 vs. California (11/15)
 3FGA ... 12 vs. California (11/15)
 FT 12 vs. Georgia Tech (1/3/16)
 FTA 16 vs. Georgia Tech (1/3/16)

4 Mariya Moore Game-by-Game

Opponent	Date	GS	FG			3-Point			Rebounds			PF	FO	A	TO	Blk	Stl	Pts	Avg					
			Min	FGA	Pct	FG	FGA	Pct	FT	FTA	Pct									Off	Def	Tot	Avg	
at UT MARTIN	11/11/16	*	21	2	4	.500	1	3	.333	4	5	.800	1	1	2	2.0	1	0	2	0	0	1	9	9.0
BELMONT	11/13/16	*	24	6	8	.750	1	2	.500	0	0	.000	1	4	5	3.5	2	0	6	2	0	0	13	11.0
at MIDDLE TENN.	11/16/16	*	36	9	14	.643	2	6	.333	7	8	.875	3	3	6	4.3	1	0	6	1	1	1	27	16.3
BOWLING GREEN	11/19/16	*	27	1	9	.111	1	5	.200	0	0	.000	0	2	2	3.8	1	0	6	3	0	2	3	13.0
LAFAYETTE	11/20/16	*	18	5	9	.556	2	6	.333	0	0	.000	1	6	7	4.4	0	0	2	0	0	1	12	12.8
CHATTANOOGA	11/21/16	*	25	2	6	.333	1	5	.200	4	4	1.000	0	4	4	4.3	1	0	7	1	0	1	9	12.2
vs S. CAROLINA	11/27/16	*	33	4	13	.308	3	8	.375	6	7	.857	1	2	3	4.1	1	0	2	5	0	0	17	12.9
MARYLAND	12/01/16	*	31	5	10	.500	1	3	.333	2	3	.667	1	0	1	3.8	5	1	1	2	1	3	13	12.9
KENTUCKY	12/04/16	*	44	1	10	.100	1	9	.111	5	8	.625	5	4	9	4.3	2	0	8	3	0	0	8	12.3
W. KENTUCKY	12/11/16	*	35	3	6	.500	1	3	.333	0	2	.000	5	4	9	4.8	3	0	8	4	0	2	7	11.8
S. DAKOTA ST.	12/14/16	*	19	1	7	.143	0	3	.000	1	1	1.000	0	2	2	4.5	2	0	3	2	0	1	3	11.0
C OF CHAR.	12/16/16	*	19	4	11	.364	2	6	.333	2	2	1.000	2	2	4	4.5	3	0	1	1	0	0	12	11.1
EVANSVILLE	12/18/16	*	20	5	11	.455	1	4	.250	1	1	1.000	0	0	0	4.2	3	0	3	0	0	0	12	11.2

4 Mariya Moore Career Statistics

Year	GP	GS	Min	Avg	FG	FGA	Pct	3FG	3FGA	Pct	FT	FTA	Pct	OReb	DReb	Reb	Avg	PF	FO	Ast	TO	Blk	Stl	Pts	Avg
2014-15	34	33	1025	30.1	134	336	.399	62	183	.339	124	154	.805	66	88	154	4.5	78	2	121	80	5	55	454	13.4
2015-16	34	32	1052	30.9	138	353	.391	77	224	.344	125	163	.767	58	102	160	4.7	84	2	148	95	2	50	478	14.1
2016-17	13	13	352	27.1	48	118	.407	17	63	.270	32	41	.780	20	34	54	4.2	25	1	53	26	2	12	145	11.2
TOTAL	81	78	2429	30.0	320	807	.397	156	470	.332	281	358	.785	144	224	368	4.5	187	5	322	201	9	117	1077	13.3

10 Sydney Zambrotta

G 5-9 Fr. - HS North Babylon, N.Y. (Christ the King HS)



- Knocked down two 3-pointers against College of Charleston and finished with eight points and one assist.
- Registered double-digit points for the second-consecutive game, tallying 10 against South Dakota State. She connected on a pair of 3-pointers and also dished out two assists.
- Totaled a season-high 15 points - all in the first half - against Western Kentucky. She connected on 5-of-6 3-pointers, hitting her first four treys without a miss.
- Scored seven points in collegiate debut, connecting on a 3-pointer against UT Martin.
- A four-star recruit, according to both espnW Hoopgurlz and Prospects Nation, from Christ the King High under coach Robert Mackey; tabbed espnW's 56th-best overall player in the class of 2016, 16th best at the point guard position.
- Was a two-time New York State Sportswriters Association all-state selection, securing fourth-team accolades in 2015 and then first-team status in 2016.
- Surpassed 2,000 career points in senior season after joining the 1,000-point club as a junior.
- Totaled 32 points, six rebounds, and four assists in leading school to the Catholic High School Athletic Association state title as a junior; averaged 23.4 points and was named to the MSG Varsity all-New York City first team that year.
- First earned national attention as an eighth-grade student in 2012 after breaking the Long Island single-game varsity record, dropping 63 points to go with 13 rebounds and 11 steals; fell two points shy of the record earlier that year with a 58-point performance.
- Also starred in soccer and lacrosse.
- Excelled in the classroom, maintaining honor roll all four years of high school.
- Played at the same high school as former Louisville standout Bria Smith and basketball greats Tina Charles, Chamique Holdscraw, and Sue Bird.
- Invited to the 2014 U.S. Women's U-17 National Team Trials roster.
- Chose Louisville over Miami (Fla.), Minnesota, Pittsburgh, and South Carolina.
- Born Dec. 1, 1997 ... majoring in sport administration.

10 Sydney Zambrotta Season Highs

Points ... 15 vs. W. Kentucky (12/11)
 Reb. 1 (5 times) *latest*: vs. Charleston (12/16)
 Asst. 2 vs. S. Dakota St. (12/14)
 Blocks .. none
 Steals ... 1 vs. Belmont (11/13), S. Dakota St. (12/14)
 FGM 5 vs. W. Kentucky (12/11)
 FGA 8 vs. Charleston (12/16)
 3FGM ... 5 vs. W. Kentucky (12/11)
 3FGA ... 8 vs. Charleston (12/16)
 FT 2 vs. UT Martin (11/11), Charleston (12/16)
 FTA 2 (3 times) *latest*: vs. Charleston (12/16)

10 Sydney Zambrotta Game-by-Game

Opponent	Date	GS	Min	FG	FGA	Pct	3-Point			FT	FTA	Pct	Rebounds			PF	FO	A	TO	Blk	Stl	Pts	Avg
							FG	FGA	Pct				Off	Def	Tot								
at UT MARTIN	11/11/16	11	2	2	1.000	1	1	1.000	2	2	1.000	0	0	0	0.0	4	0	0	3	0	0	7	7.0
BELMONT	11/13/16	7	0	3	.000	0	2	.000	0	0	.000	0	1	1	0.5	2	0	0	0	0	1	0	3.5
at MIDDLE TENN.	11/16/16	1	0	0	.000	0	0	.000	0	0	.000	0	1	1	0.7	0	0	0	0	0	0	0	2.3
BOWLING GREEN	11/19/16	4	0	1	.000	0	1	.000	0	0	.000	0	0	0	0.5	2	0	0	0	0	0	0	1.8
LAFAYETTE	11/20/16	10	1	3	.333	0	2	.000	1	2	.500	0	0	0	0.4	0	0	3	0	0	3	2.0	
CHATTANOOGA	11/21/16	5	1	2	.500	0	1	.000	0	0	.000	0	0	0	0.3	1	0	0	0	0	2	2.0	
vs S. CAROLINA	11/27/16	3	0	0	.000	0	0	.000	0	0	.000	0	0	0	0.3	0	0	1	0	0	0	0	1.7
MARYLAND	12/01/16	0	0	0	.000	0	0	.000	0	0	.000	0	0	0	0.3	0	0	0	0	0	0	0	1.5
W. KENTUCKY	12/11/16	16	5	6	.833	5	6	.833	0	0	.000	0	1	1	0.3	1	0	0	3	0	0	15	3.0
S. DAKOTA ST.	12/14/16	14	4	6	.667	2	4	.500	0	0	.000	0	1	1	0.4	1	0	2	2	0	1	10	3.7
C OF CHAR.	12/16/16	14	2	8	.250	2	8	.250	2	2	1.000	0	1	1	0.5	2	0	1	1	0	0	8	4.1
EVANSVILLE	12/18/16	14	0	3	.000	0	2	.000	0	0	.000	0	0	0	0.4	0	0	0	0	0	0	0	3.8

10 Sydney Zambrotta Career Statistics

Year	GP	GS	Min	Avg	FG	FGA	Pct	3FG	3FGA	Pct	FT	FTA	Pct	OReb	DReb	Reb	Avg	PF	FO	Ast	TO	Blk	Stl	Pts	Avg
2016-17	12	0	99	8.3	15	34	.441	10	27	.370	5	6	.833	0	5	5	0.4	13	0	4	12	0	2	45	3.8
TOTAL	12	0	99	8.3	15	34	.441	10	27	.370	5	6	.833	0	5	5	0.4	13	0	4	12	0	2	45	3.8

11 Arica Carter

G 5-8 Jr. - 2L Los Angeles, Calif. (Long Beach Poly HS)



- Selected as a nominee for the 2017 WBCA Allstate Good Works Team, which recognizes student-athletes for giving back to their communities.
- Has missed first 13 games of season due to a groin injury.
- Earned the starting nod in 29 of 34 games played last season, finishing the year averaging 4.1 points, 2.3 rebounds, 2.6 assists, and 1.2 steals. She hit 41.0 percent (16-of-39) of her 3-point attempts.
- Registered five points, four assists, and one block against Central Arkansas in the first round of the NCAA Tournament.
- Had a career-tying best four steals against Pittsburgh.
- Set a career high with 15 points on a career-best 6-of-9 shooting against USF. She also matched a career best with two 3-pointers and collected three steals.
- Tied a career best by going 2-for-3 from 3-point range, totaling six points against North Carolina.
- Poured in 13 points against NC State, connecting on a collegiate-best two 3-pointers. She finished 5-of-8 from the field to go with three boards and two steals.
- Rated a four-star prospect by ESPN HoopGurlz and ProspectsNation.com at Long Beach Poly High under coach Carl Buggs. She was ranked 77th overall nationally, 16th at the guard position, for the Class of 2014 by ESPN HoopGurlz.
- Chosen as the Long Beach Press Telegram’s All-Area Player of the Year as a junior. She averaged 10.5 points, 5.1 steals, and 4.3 rebounds that year.
- Helped guided high school team to second-straight state title in 2014, the sixth in the previous nine years.
- Maintained a 3.8 cumulative grade-point average in high school.
- Born July 19, 1996 ... majoring in exercise science.

11 Arica Carter Season Highs

Points.... none
 Rebs. none
 Asst..... none
 Blocks... none
 Steals... none
 FGM..... none
 FGA none
 3FGM.... none
 3FGA none
 FT none
 FTA none

11 Arica Carter Career Highs

Points ... 15 vs. USF (2/15/16)
 Reb. 6 vs. Belmont (11/20/14)
 Asst. 7 vs. Purdue (11/28/15)
 Blocks .. 2 vs. Virginia Tech (1/7/16)
 vs. Syracuse (1/29/15)
 Steals ... 4 (4 times) latest: vs. Pittsburgh (2/28/16)
 FGM 6 vs. USF (2/15/16)
 FGA 9 vs. USF (2/15/16)
 3FGM ... 2 (3 times) latest: vs. USF (2/15/16)
 3FGA ... 3 (4 times) latest: vs. DePaul (3/20/16)
 FT 4 vs. BYU (3/21/15)
 FTA 5 vs. Belmont (11/20/14)

11 Arica Carter Game-by-Game

Opponent	Date	GS	Min	FG	FGA	Pct	3-Point			FT	FTA	Pct	Rebounds				PF	FO	A	TO	Blk	Stl	Pts	Avg
							FG	FGA	Pct				Off	Def	Tot	Avg								
none																								

11 Arica Carter Career Statistics

Year	GP	GS	Min	Avg	FG	FGA	Pct	3FG	3FGA	Pct	FT	FTA	Pct	OReb	DReb	Reb	Avg	PF	FO	Ast	TO	Blk	Stl	Pts	Avg
2014-15	34	1	557	16.4	33	99	.333	0	15	.000	17	29	.586	19	42	61	1.8	54	0	52	44	7	31	83	2.4
2015-16	34	29	799	23.5	52	131	.397	16	39	.410	18	27	.667	32	47	79	2.3	72	3	87	60	9	41	138	4.1
TOTAL	68	30	1356	19.9	85	230	.370	16	54	.296	35	56	.625	51	89	140	2.1	126	3	139	104	16	72	221	3.3

13 Cortnee Walton

F 6-3 r-Sr. - 3L Surprise, Ariz. (St. Mary's Catholic HS)



- Collected nine rebounds to go with six points against South Dakota State. She had a season-tying best five offensive rebounds and is averaging 3.6 through seven games this year.
- Produced eight points and eight rebounds against Western Kentucky. In the third quarter alone, she had six points and five boards.
- Pulled down a season-best 10 rebounds against Kentucky.
- Earned the start against Maryland and finished with eight points and nine rebounds, including five on the offensive glass.
- Played 14 minutes against South Carolina for first game action of the season, totaling two points and three rebounds.
- Missed the first six games due to a preseason right elbow injury.
- Named to the 2015 Allstate WBCA Good Works Team for outstanding contributions in the areas of volunteerism and civic involvement. She was one of five Division I student-athletes selected out of 103 nominees.
- Started all 34 games last year and averaged 5.9 points, 7.3 rebounds, and 1.2 steals.
- Ranked second in the ACC in offensive rebounds per game (4.0) and ninth in overall rebounding (7.3). In conference play, she was first in offensive rebounds (4.4) and fourth in overall rebounding (8.0). Nationally, she was 22nd in offensive rebounds per game.
- Finished the year with 136 boards on the offensive end, the most in the Jeff Walz era and the second-highest total since the statistic was tracked dating back to 2000-01 (Angel McCoughtry, 2006-07, 142).
- Capped the year with a single-season best 249 rebounds - more than double her previous high of 118 in 37 games during her sophomore year.
- Matched a career best with two blocks in the first round of the NCAA Tournament against Central Arkansas.
- Collected 11 rebounds against Georgia Tech in the ACC Tournament, her 11th game in 2015-16 with double-digit rebounds.
- Saw action in four games in 2014-15, but earned a redshirt after fracturing third toe on right foot during the preseason.
- Saw action in 37 games in 2013-14, averaging 2.6 points and 3.2 rebounds, averaging more than 12 minutes per game.
- Born Feb. 9, 1994 ... earned bachelor's degree in spring of 2015 in communication; pursuing master's degree in sport administration.

13 Cortnee Walton Season Highs

Points.... 8 vs. Maryland (12/1), W. Kentucky (12/11)
 Rebs. 10 vs. Kentucky (12/4)
 Asst..... 1 (4 times) *latest:* vs. Evansville (12/18)
 Blocks... 1 vs. Maryland (12/1), Kentucky (12/4)
 Steals.... 1 vs. S. Dakota St. (12/14)
 FGM..... 4 vs. Maryland (12/1), W. Kentucky (12/11)
 FGA 6 vs. Kentucky (12/4), W. Kentucky (12/11)
 3FGM.... none
 3FGA none
 FT none
 FTA 2 vs. Maryland (12/1), Evansville (12/18)

13 Cortnee Walton Career Highs

Points ... 18 vs. Pittsburgh (2/11/16)
 Reb. 13 vs. Notre Dame (2/7/16)
 vs. Western Kentucky (11/21/15)
 Asst. 3 (7 times) *latest:* vs. USF (2/15/16)
 Blocks .. 2 vs. Central Arkansas (3/18/16)
 vs. Virginia (2/18/16)
 Steals ... 4 vs. Purdue (11/28/15)
 FGM 8 vs. Pittsburgh (2/11/16)
 FGA 9 (3 times) *latest:* vs. Boston College (2/21/16)
 3FGM ... none
 3FGA ... 1 (4 times) *latest:* vs. Notre Dame (2/7/16)
 FT 5 vs. Ball State (12/17/13)
 FTA 8 vs. Ball State (12/17/13)

13 Cortnee Walton Game-by-Game

Opponent	Date	GS	Min	FG	FGA	Pct	3-Point			FT	FTA	Pct	Rebounds				PF	FO	A	TO	Blk	Stl	Pts	Avg
							FG	FGA	Pct				Off	Def	Tot	Avg								
vs S. CAROLINA	11/27/16		14	1	2	.500	0	0	.000	0	0	.000	1	2	3	3.0	2	0	0	1	0	0	2	2.0
MARYLAND	12/01/16 *		35	4	5	.800	0	0	.000	0	2	.000	5	4	9	6.0	4	0	1	1	1	0	8	5.0
KENTUCKY	12/04/16 *		41	2	6	.333	0	0	.000	0	0	.000	4	6	10	7.3	4	0	0	1	1	0	4	4.7
W. KENTUCKY	12/11/16 *		28	4	6	.667	0	0	.000	0	0	.000	2	6	8	7.5	3	0	1	1	0	0	8	5.5
S. DAKOTA ST.	12/14/16 *		19	3	5	.600	0	0	.000	0	0	.000	5	4	9	7.8	1	0	0	0	0	1	6	5.6
C OF CHAR.	12/16/16 *		13	2	4	.500	0	0	.000	0	0	.000	4	1	5	7.3	2	0	1	0	0	0	4	5.3
EVANSVILLE	12/18/16 *		12	0	3	.000	0	0	.000	1	2	.500	4	1	5	7.0	2	0	1	1	0	0	1	4.7

13 Cortnee Walton Career Statistics

Year	GP	GS	Min	Avg	FG	FGA	Pct	3FG	3FGA	Pct	FT	FTA	Pct	OReb	DReb	Reb	Avg	PF	FO	Ast	TO	Blk	Stl	Pts	Avg
2012-13	33	0	394	11.9	37	70	.529	0	2	.000	18	45	.400	36	48	84	2.5	40	0	10	33	2	21	92	2.8
2013-14	37	0	451	12.2	37	75	.493	0	0	.000	21	40	.525	56	62	118	3.2	52	0	20	27	5	14	95	2.6
2014-15	4	1	53	13.3	4	9	.444	0	0	.000	6	8	.750	6	8	14	3.5	4	0	5	5	0	2	14	3.5
2015-16	34	34	996	29.3	79	172	.459	0	2	.000	41	63	.651	136	113	249	7.3	78	1	48	60	16	39	199	5.9
2016-17	7	6	162	23.1	16	31	.516	0	0	.000	1	4	.250	25	24	49	7.0	18	0	4	5	2	1	33	4.7
TOTAL	115	41	2056	17.9	173	357	.485	0	4	.000	87	160	.544	259	255	514	4.5	192	1	87	130	25	77	433	3.8

15 Taylor Johnson

G 5-7 Gr. - Tr. Frankfort, Ill. (Loyola Chicago)



- Logged three steals against Evansville and has 10 thefts through the last three games.
- Totaled a season-high five steals against College of Charleston.
- Collected six assists against South Carolina and ranks third on the team with 33.
- Tallied four points, seven assists, and two steals against UT Martin in Louisville debut.
- Averaged 14.2 points, 4.9 rebounds, 3.3 assists, and 2.5 steals over 93 games at Loyola Chicago (2012-16); totaled 1,325 points, 306 assists, and 234 steals, while shooting 74.0 percent from the charity stripe.
- Accumulated multiple postseason awards during tenure: 2015-16 first team all-Missouri Valley Conference; 2015-16 Missouri Valley Conference all-Defensive Team; 2012-13 Horizon League Newcomer of the Year; 2012-13 all-Horizon League second team and newcomer team; and, 2012-13 Horizon League all-Tournament Team.
- Started all 30 games as a senior and averaged the league's eighth-best scoring mark at 15.1 points to go with 4.9 rebounds; also compiled top-15 league marks in assists (4.0, No. 3), steals (2.6, No. 2 in MVC; No. 26 nationally), field goal percentage (42.4, No. 14), and free throw percentage (79.5, No. 5).
- Played in five games in 2013-14 before sustaining a season-ending knee injury; scored a season-high 31 on 12-of-26 shooting against Western Illinois to end the year on Nov. 23.
- Born March 15, 1994 ... earned bachelor's degree in spring of 2016 in film and digital media, with a minor in visual communication; pursuing master's degree in sport administration.

15 Taylor Johnson Season Highs

Points ... 6 vs. Lafayette (11/20), Evansville (12/18)
 Reb. 5 vs. Lafayette (11/20)
 Asst. 7 vs UT Martin (11/11)
 Blocks .. 1 vs. South Carolina (11/27)
 Steals ... 5 vs. Charleston (12/16)
 FGM 2 (3 times) *latest*: vs. Evansville (12/18)
 FGA 5 vs. South Carolina (11/27)
 3FGM ... none
 3FGA ... 1 (3 times) *latest*: vs. South Carolina (11/27)
 FT 4 vs. Chattanooga (11/21)
 FTA 4 (3 times) *latest*: vs. Evansville (12/18)

15 Taylor Johnson Season Highs

Points ... 33 vs. Milwaukee (1/31/13)
 Reb. 12 vs. Southern Illinois (1/10/15)
 Asst. 10 vs. Lamar (11/28/15)
 Blocks .. 2 (8 times) *latest*: Indiana State (1/22/16)
 Steals ... 10 vs. Chicago State (12/22/12)
 FGM 13 vs. Milwaukee (1/31/13)
 FGA 26 vs. Western Illinois (11/23/13)
 3FGM ... 3 vs. DePaul (12/17/14)
 3FGA ... 4 vs. Western Illinois (11/23/13)
 FT 10 vs. Indiana State (2/21/16)
 vs. Southern Illinois (2/5/16)
 FTA 14 vs. Indiana State (2/21/16)

15 Taylor Johnson Game-by-Game

Opponent	Date	GS	Min	FG	FGA	Pct	3-Point			FT	FTA	Pct	Rebounds			PF	FO	A	TO	Blk	Stl	Pts	Avg	
							FG	FGA	Pct				Off	Def	Tot									Avg
at UT MARTIN	11/11/16	*	15	2	2	1.000	0	0	.000	0	0	.000	0	2	2	2.0	3	0	7	1	0	2	4	4.0
BELMONT	11/13/16	*	19	1	3	.333	0	1	.000	0	0	.000	0	2	2	2.0	2	0	4	1	0	1	2	3.0
at MIDDLE TENN.	11/16/16	*	22	0	3	.000	0	0	.000	3	4	.750	2	1	3	2.3	1	0	1	2	0	2	3	3.0
BOWLING GREEN	11/19/16	*	11	1	2	.500	0	0	.000	0	0	.000	0	2	2	2.3	0	0	3	0	0	2	2	2.8
LAFAYETTE	11/20/16	*	12	2	4	.500	0	0	.000	2	3	.667	2	3	5	2.8	1	0	2	3	0	0	6	3.4
CHATTANOOGA	11/21/16	*	14	0	3	.000	0	1	.000	4	4	1.000	1	1	2	2.7	2	0	4	1	0	2	4	3.5
vs S. CAROLINA	11/27/16	*	20	1	5	.200	0	1	.000	0	0	.000	0	3	3	2.7	1	0	6	2	1	0	2	3.3
MARYLAND	12/01/16		8	0	1	.000	0	0	.000	0	0	.000	0	2	2	2.6	1	0	2	0	0	1	0	2.9
KENTUCKY	12/04/16		4	0	0	.000	0	0	.000	0	0	.000	1	0	1	2.4	2	0	1	0	0	1	0	2.6
W. KENTUCKY	12/11/16		2	0	0	.000	0	0	.000	0	0	.000	0	0	0	2.2	1	0	0	3	0	0	0	2.3
S. DAKOTA ST.	12/14/16		15	1	4	.250	0	0	.000	0	0	.000	2	1	3	2.3	1	0	1	0	0	2	2	2.3
C OF CHAR.	12/16/16		19	1	2	.500	0	0	.000	0	0	.000	1	1	2	2.3	2	0	0	4	0	5	2	2.3
EVANSVILLE	12/18/16		12	2	3	.667	0	0	.000	2	4	.500	0	2	2	2.2	1	0	2	1	0	3	6	2.5

15 Taylor Johnson Career Statistics

Year	GP	GS	Min	Avg	FG	FGA	Pct	3FG	3FGA	Pct	FT	FTA	Pct	OReb	DReb	Reb	Avg	PF	FO	Ast	TO	Blk	Stl	Pts	Avg
2012-13*	32	31	981	30.7	166	394	.421	4	24	.167	90	119	.756	62	127	189	5.9	84	2	94	72	14	79	426	13.3
2013-14*	5	5	151	30.2	33	76	.434	4	8	.500	22	31	.710	6	26	32	6.4	18	1	15	16	6	9	92	18.4
2014-15*	26	26	901	34.7	118	357	.331	10	43	.233	79	117	.675	21	62	83	3.2	57	0	74	82	13	61	325	12.5
2015-16*	30	30	993	33.1	161	380	.424	6	24	.250	124	156	.795	36	110	146	4.9	81	3	120	86	22	79	452	15.1
2016-17	13	7	173	13.3	11	32	.344	0	3	.000	11	15	.733	9	20	29	2.2	18	0	33	18	1	21	33	2.5
TOTAL	13	7	173	13.3	11	32	.344	0	3	.000	11	15	.733	9	20	29	2.2	18	0	33	18	1	21	33	2.5
All*	106	99	3199	30.2	489	1239	.395	24	102	.235	326	438	.744	134	345	479	4.5	258	6	336	274	56	249	1328	12.5

21 Kylee Shook

F 6-4 Fr. - HS Colorado Springs, Colo. (Mesa Ridge HS)



- Produced 18 points and 10 boards - both season highs - against Evansville for first career double-double. She also matched a season best with four blocks.
- Connected on a pair of 3-pointers and finished with eight points against South Dakota State.
- Scored 10 points on 4-of-8 shooting, while grabbing five rebounds against Lafayette.
- Swatted a season-best four shots at Middle Tennessee.
- Made collegiate debut against UT Martin and totaled eight points, three boards, one block, and one steal.
- A 2016 McDonald's All-American from Mesa Ridge High under coach Jeff Beatty; also earned WBCA high school All-America honorable mention accolades as a senior.
- Tabbed a five-star recruit and the 17th-best player in the class of 2016, according to espnW Hoopgurlz; voted as the third-best player at the post position by espnW.
- Finished career as the state's leading rebounder, with 1,299 boards and shot blocker, accumulating 620; the block total is 184 better than the previous record holder from 2003.
- Excelled on the offensive end as well, scoring 1,797 points on 52 percent shooting over career; also tallied 218 assists and 195 steals.
- Named the 2015 Colorado 4-A Player of the Year and all-state first team as a junior; averaged 18.3 points, 14.9 points, and 8.1 blocks; registered 194 blocks, the second-highest total for a single season in state history.
- Secured first team Class 4-A state honors in 2015 and 2016.
- Compiled a quadruple-double as a junior, with 24 points, 22 rebounds, 12 blocks, and 11 assists.
- Over four-year career, aided high school to a 93-11 record that included a 28-0 mark in sophomore season; it culminated with a Class 4-A state championship.
- Also played volleyball, totaling 902 kills and 230 blocks during career.
- Chose Louisville over Washington and Colorado.
- Born March 18, 1998 ... enrolled in general studies.

21 Kylee Shook Season Highs

Points ... 18 vs. Evansville (12/18)
 Reb. 10 vs. Evansville (12/18)
 Asst. 1 (6 times) *latest*: vs. Charleston (12/16)
 Blocks .. 4 vs. Middle Tenn. (11/16), Evansville (12/18)
 Steals ... 2 vs. Evansville (12/18)
 FGM 8 vs. Evansville (12/18)
 FGA 10 vs. Evansville (12/18)
 3FGM ... 2 vs. S. Dakota St. (12/14), Evansville (12/18)
 3FGA ... 3 vs. Belmont (11/13)
 FT 2 vs. Lafayette (11/20)
 FTA 2 vs. Middle Tenn. (11/16), Lafayette (11/20)

21 Kylee Shook Game-by-Game

Opponent	Date	GS	Min	FG	FGA	Pct	3-Point			FT	FTA	Pct	Rebounds				PF	FO	A	TO	Blk	Stl	Pts	Avg
							FG	FGA	Pct				Off	Def	Tot	Avg								
at UT MARTIN	11/11/16	17	4	8	.500	0	1	.000	0	0	.000	1	2	3	3.0	4	0	0	2	1	1	8	8.0	
BELMONT	11/13/16	19	2	6	.333	0	3	.000	0	0	.000	0	4	4	3.5	0	0	1	1	0	1	4	6.0	
at MIDDLE TENN.	11/16/16	16	1	4	.250	0	1	.000	1	2	.500	1	3	4	3.7	2	0	1	1	4	0	3	5.0	
BOWLING GREEN	11/19/16	17	3	8	.375	0	1	.000	0	0	.000	3	0	3	3.5	0	0	1	1	0	0	6	5.3	
LAFAYETTE	11/20/16	22	4	8	.500	0	1	.000	2	2	1.000	2	3	5	3.8	2	0	0	1	1	0	10	6.2	
CHATTANOOGA	11/21/16	12	3	7	.429	0	1	.000	0	0	.000	1	4	5	4.0	1	0	0	0	1	0	6	6.2	
vs S. CAROLINA	11/27/16	10	2	2	1.000	0	0	.000	0	0	.000	1	1	2	3.7	5	1	1	0	0	0	4	5.9	
MARYLAND	12/01/16	1	1	1	1.000	0	0	.000	0	0	.000	0	0	0	3.3	0	0	0	1	0	0	2	5.4	
KENTUCKY	12/04/16	8	1	2	.500	1	1	1.000	1	2	.500	1	1	2	3.1	1	0	0	0	0	0	4	5.2	
W. KENTUCKY	12/11/16	5	1	1	1.000	0	0	.000	0	0	.000	0	0	0	2.8	0	0	0	0	0	0	2	4.9	
S. DAKOTA ST.	12/14/16	9	3	3	1.000	2	2	1.000	0	0	.000	0	0	0	2.5	2	0	1	0	0	0	8	5.2	
C OF CHAR.	12/16/16	14	1	6	.167	0	2	.000	0	0	.000	1	2	3	2.6	0	0	1	1	2	0	2	4.9	
EVANSVILLE	12/18/16	17	8	10	.800	2	2	1.000	0	0	.000	2	8	10	3.2	0	0	0	2	4	2	18	5.9	

21 Kylee Shook Career Statistics

Year	GP	GS	Min	Avg	FG	FGA	Pct	3FG	3FGA	Pct	FT	FTA	Pct	OReb	DReb	Reb	Avg	PF	FO	Ast	TO	Blk	Stl	Pts	Avg
2016-17	13	0	167	12.8	34	66	.515	5	15	.333	4	6	.667	13	28	41	3.2	17	1	6	10	13	4	77	5.9
TOTAL	13	0	167	12.8	34	66	.515	5	15	.333	4	6	.667	13	28	41	3.2	17	1	6	10	13	4	77	5.9

22 Brianna Jones

G 5-9 So. - 1L North Babylon, N.Y. (North Babylon HS)



- Matched career highs in rebounds (6) and assists (2) against College of Charleston.
- Played eight minutes against South Dakota State and totaled four points, three rebounds, and one assist.
- Scored a season-high four points, also tallying two assists and two steals, against Bowling Green.
- Pulled down a career-best six rebounds against Lafayette in 13 minutes.
- Came off the bench in 21 games last year.
- Played 10 minutes and grabbed one rebound against Central Arkansas in the NCAA Tournament first round.
- Registered a season-best six points, four in the first period, against Clemson. She also matched a season high with four rebounds.
- Selected to play in the inaugural women's Jordan Brand Classic in the spring of 2015 in the Barclays Center.
- Earned all-state honors from the New York State Sportswriters Association in 2013-14 in addition to garnering MaxPreps Girls Basketball All-American Team honorable mention accolades.
- Averaged 17.1 points and 10.3 rebounds, while knocking down 68 3-pointers during junior campaign. Surpassed 1,000 career points that year and was the only junior nominated for New York's Gatorade Player of the Year award.
- Helped school reach the Suffolk County Class AA championship game as a sophomore, producing 13.4 points and 8.9 rebounds per game.
- Played AAU basketball for the Philadelphia Belles, which at one time featured Connecticut's Breanna Stewart.
- Chose Louisville over Ohio State, Penn State, Duke, Michigan and West Virginia.
- Born Feb. 9, 1997 ... majoring in accounting.

22 Brianna Jones Season Highs

Points ... 4 vs. Bowling Green (11/19), S. Dakota St. (12/14)
 Reb. 6 vs. Lafayette (11/20), Charleston (12/16)
 Asst. 2 vs. Bowling Green (11/19), Charleston (12/16)
 Blocks .. 1 vs. Evansville (12/18)
 Steals ... 2 vs. Bowling Green (11/19)
 FGM 2 vs. Bowling Green (11/19), S. Dakota St. (12/14)
 FGA 5 vs. Bowling Green (11/19)
 3FGM ... none
 3FGA ... 1 vs. UT Martin (11/11)
 FT none
 FTA 2 vs. Lafayette (11/20)

22 Brianna Jones Career Highs

Points ... 6 vs. Clemson (1/28/16)
 Reb. 6 vs. Charleston (12/16)
 vs. Lafayette (11/20/16)
 Asst. 2 vs. Charleston (12/16)
 vs. Bowling Green (11/19/16)
 Blocks ... 1 vs. Evansville (12/18/16)
 Steals ... 2 vs. Bowling Green (11/19/16)
 FGM 2 (3 times) /atest: vs. S. Dakota St. (12/14/16)
 FGA 5 vs. Bowling Green (11/19/16)
 vs. Clemson (1/28/16)
 3FGM ... 1 vs. Marist (11/27/15)
 3FGA ... 2 vs. Miami (2/25/16)
 FT 2 vs. vs. Clemson (1/28/16)
 FTA 2 vs. Lafayette (11/20/16)
 vs. Clemson (1/28/16)

22 Brianna Jones Game-by-Game

Opponent	Date	GS	Min	FG	FGA	Pct	3-Point			Rebounds			PF	FO	A	TO	Blk	Stl	Pts	Avg			
							FG	FGA	Pct	FT	FTA	Pct									Off	Def	Tot
at UT MARTIN	11/11/16	10	0	2	.000	0	1	.000	0	0	.000	0	0	0	0	0	1	0	0	0	0.0		
BELMONT	11/13/16	8	0	2	.000	0	0	.000	0	0	.000	0	1	1	0.5	0	0	0	0	0	0.0		
at MIDDLE TENN.	11/16/16	1	0	0	.000	0	0	.000	0	0	.000	0	0	0	0.3	0	0	0	0	0	0.0		
BOWLING GREEN	11/19/16	10	2	5	.400	0	0	.000	0	0	.000	0	1	1	0.5	0	0	2	0	2	4	1.0	
LAFAYETTE	11/20/16	13	1	2	.500	0	0	.000	0	2	.000	3	3	6	1.6	1	0	0	1	0	2	1.2	
CHATTANOOGA	11/21/16	11	1	1	1.000	0	0	.000	0	0	.000	0	0	0	1.3	1	0	0	0	0	2	1.3	
vs S. CAROLINA	11/27/16	3	0	0	.000	0	0	.000	0	0	.000	0	0	0	1.1	0	0	0	0	0	0	1.1	
S. DAKOTA ST.	12/14/16	8	2	3	.667	0	0	.000	0	0	.000	0	3	3	1.4	1	0	1	0	0	4	1.5	
C OF CHAR.	12/16/16	9	0	1	.000	0	0	.000	0	0	.000	2	4	6	1.9	1	0	2	2	0	0	1.3	
EVANSVILLE	12/18/16	10	1	2	.500	0	0	.000	0	0	.000	1	0	1	1.8	0	0	1	1	1	0	2	1.4

22 Brianna Jones Career Statistics

Year	GP	GS	Min	Avg	FG	FGA	Pct	3FG	3FGA	Pct	FT	FTA	Pct	OReb	DReb	Reb	Avg	PF	FO	Ast	TO	Blk	Stl	Pts	Avg
2015-16	21	0	122	5.8	6	26	.231	1	6	.167	2	2	1.000	6	18	24	1.1	15	0	2	7	0	3	15	0.7
2016-17	10	0	83	8.3	7	18	.389	0	1	.000	0	2	.000	6	12	18	1.8	4	0	6	5	1	2	14	1.4
TOTAL	31	0	205	6.6	13	44	.295	1	7	.143	2	4	.500	12	30	42	1.4	19	0	8	12	1	5	29	0.9

23 Jazmine Jones

G 6-0 Fr. - HS Tallahassee, Fla. (Florida A&M Develop.)



- Grabbed a season-high eight rebounds to go with three assists against Evansville. She is averaging 5.4 rebounds in 12.8 minutes over the last five games.
- Logged a season-high 15 points - in 14 minutes - on 6-of-8 shooting against South Dakota State. She also had four rebounds, one assist, one block, and one steal.
- Scored six of seven points in the first half on 3-of-5 shooting against Kentucky, also totaling four rebounds and one steal.
- Produced eight points and a season-best four steals against Chattanooga.
- Totaled six points, six assists, and three steals against UT Martin in collegiate debut.
- A five-star prospect in the class of 2016, according to espnW Hoopgurlz, at Florida A&M Developmental Research School under coach Ericka Cromartie; ranked as the 43rd-best player overall by espnW and the 10th best at the guard position.
- Tabbed a four-and-a-half-star athlete and the seventh-best guard in 2016 by Prospects Nation.
- Voted the 2015-16 Florida Gatorade Player of the Year for girls' basketball; earlier in 2016, was selected the All-Big Bend Player of the Year – second-consecutive time earning the honor – and became a two-time Florida Dairy Farmers Class 2A Player of the Year.
- Averaged 22 points, 10 rebounds, four assists, and three steals in logging a 30-2 season and consecutive Class 2-A state titles.
- Finished career with more than 2,000 points, 1,000 rebounds, 500 assists, and 500 steals.
- A five-time all-Big Bend selection, averaged 22.0 points, 9.8 rebounds, 4.7 assists, and 3.1 steals in senior campaign.
- Named to the 2014 U.S. Women's U-18 National Team Trials roster.
- Maintained better than a 3.3 weighted grade-point average.
- Chose Louisville over Ohio State, Miami (Fla.), and Florida State.
- Dad played collegiate football at Florida A&M and then professionally for the Dallas Cowboys; brother played collegiate football at Florida International; sister GiGi played collegiate basketball at Appalachian State and Jacksonville.
- Born Oct. 15, 1996 ... majoring in criminal justice.

23 Jazmine Jones Season Highs

Points ... 15 vs. S. Dakota St. (12/14)
 Reb. 8 vs. Evansville (12/18)
 Asst. 6 vs. UT Martin (11/11)
 Blocks .. 1 vs. S. Dakota St. (12/14)
 Steals ... 4 vs. Chattanooga (11/21)
 FGM 6 vs. S. Dakota St. (12/14)
 FGA 8 vs. Chattanooga (11/21), S. Dakota St. (12/14)
 3FGM ... none
 3FGA ... none
 FT 3 vs. S. Dakota St. (12/14)
 FTA 4 vs. S. Dakota St. (12/14)

23 Jazmine Jones Game-by-Game

Opponent	Date	GS	Min	FG	FGA	Pct	3-Point			Rebounds			PF	FO	A	TO	Blk	Stl	Pts	Avg			
							FG	FGA	Pct	FT	FTA	Pct									Off	Def	Tot
at UT MARTIN	11/11/16	18	2	4	.500	0	0	.000	2	2	1.000	1	2	3	3.0	1	0	6	1	0	3	6	6.0
BELMONT	11/13/16	13	2	4	.500	0	0	.000	0	0	.000	0	2	2	2.5	2	0	1	0	0	0	4	5.0
at MIDDLE TENN.	11/16/16	16	0	1	.000	0	0	.000	0	0	.000	0	1	1	2.0	0	0	0	1	0	0	0	3.3
BOWLING GREEN	11/19/16	13	2	4	.500	0	0	.000	0	0	.000	3	2	5	2.8	0	0	1	4	0	1	4	3.5
LAFAYETTE	11/20/16	22	1	5	.200	0	0	.000	1	1	1.000	1	2	3	2.8	3	0	4	2	0	2	3	3.4
CHATTANOOGA	11/21/16	16	3	8	.375	0	0	.000	2	2	1.000	0	1	1	2.5	1	0	0	2	0	4	8	4.2
vs S. CAROLINA	11/27/16	11	3	5	.600	0	0	.000	0	0	.000	0	2	2	2.4	2	0	0	1	0	0	6	4.4
MARYLAND	12/01/16	12	1	2	.500	0	1	.000	0	0	.000	2	0	2	2.4	2	0	1	0	0	0	2	4.1
KENTUCKY	12/04/16	15	3	5	.600	0	0	.000	1	2	.500	3	1	4	2.6	1	0	1	0	0	1	7	4.4
W. KENTUCKY	12/11/16	7	0	0	.000	0	0	.000	0	1	.000	2	2	4	2.7	1	0	0	2	0	0	0	4.0
S. DAKOTA ST.	12/14/16	14	6	8	.750	0	0	.000	3	4	.750	2	2	4	2.8	0	0	1	0	1	1	15	5.0
C OF CHAR.	12/16/16	14	1	4	.250	0	0	.000	0	0	.000	2	5	7	3.2	3	0	2	0	0	0	2	4.8
EVANSVILLE	12/18/16	14	3	6	.500	0	0	.000	0	0	.000	2	6	8	3.5	2	0	3	0	0	0	6	4.8

23 Jazmine Jones Career Statistics

Year	GP	GS	Min	Avg	FG	FGA	Pct	3FG	3FGA	Pct	FT	FTA	Pct	OReb	DReb	Reb	Avg	PF	FO	Ast	TO	Blk	Stl	Pts	Avg
2016-17	13	0	185	14.2	27	56	.482	0	1	.000	9	12	.750	18	28	46	3.5	18	0	20	13	1	12	63	4.8
TOTAL	13	0	185	14.2	27	56	.482	0	1	.000	9	12	.750	18	28	46	3.5	18	0	20	13	1	12	63	4.8

24 Jessica Laemmle

G 5-2 Fr. - HS Louisville, Ky. (Mercy Academy HS)

- Scored two points and totaled two rebounds and one assist against College of Charleston.
- Registered four points, one assist, and one steal in collegiate debut, playing nine minutes against UT Martin.
- The 2016 Louisville Catholic Sports Network Girls' Basketball Player of the Year at Mercy Academy under coaches Keith Baisch and Mark Evans.
- Helped guide school to a 22-12 record in senior season, advancing to the Sixth Region championship game; averaged 9.3 points, 3.3 rebounds, and 5.6 assists per game that year.
- Earned multiple additional accolades during senior campaign: Courier Journal all-second team; all-district; all-Sixth region second team; and, all-Louisville Invitational Tournament team.
- Directed school as a junior to the 24th District championship, logging 14 points, four assists, three rebounds, and two steals; went 8-for-8 at the charity stripe.
- Named to the all-district team in 2015, while also attaining all-region tournament and Louisville Catholic Sports Network girls' team honors.
- Born Aug. 5, 1998 ... majoring in psychology.



24 Jessica Laemmle Season Highs

Points ... 4 vs. UT Martin (11/11)
 Reb. 3 vs. Bowling Green (11/19)
 Asst. 2 vs. Lafayette (11/20)
 Blocks ... none
 Steals ... 1 (4 times) latest: vs. S. Dakota St. (12/14)
 FGM 1 vs. UT Martin (11/11), Charleston (12/16)
 FGA 2 (4 times) latest: vs. Evansville (12/18)
 3FGM ... none
 3FGA ... 1 (3 times) latest: vs. Evansville (12/18)
 FT 2 vs. UT Martin (11/11)
 FTA 2 (3 times) latest: vs. South Carolina (11/27)

24 Jessica Laemmle Game-by-Game		3-Point						Rebounds																
Opponent	Date	GS	Min	FG	FGA	Pct	FG	FGA	Pct	FT	FTA	Pct	Off	Def	Tot	Avg	PF	FO	A	TO	Blk	Stl	Pts	Avg
at UT MARTIN	11/11/16	9	1	1	1.000	0	0	.000	2	2	1.000	1	0	1	1.0	1	0	1	0	0	1	4	4.0	
BELMONT	11/13/16	7	0	2	.000	0	1	.000	0	2	.000	1	0	1	1.0	3	0	1	0	0	1	0	2.0	
at MIDDLE TENN.	11/16/16	1	0	0	.000	0	0	.000	0	0	.000	0	0	0	0.7	0	0	0	0	0	0	0	1.3	
BOWLING GREEN	11/19/16	4	0	0	.000	0	0	.000	0	0	.000	0	3	3	1.3	2	0	0	1	0	0	0	1.0	
LAFAYETTE	11/20/16	12	0	2	.000	0	1	.000	0	0	.000	0	0	0	1.0	3	0	2	2	0	1	0	0.8	
CHATTANOOGA	11/21/16	10	0	1	.000	0	0	.000	0	0	.000	0	1	1	1.0	1	0	0	0	0	0	0	0.7	
vs S. CAROLINA	11/27/16	2	0	0	.000	0	0	.000	1	2	.500	0	0	0	0.9	0	0	0	0	0	0	1	0.7	
W. KENTUCKY	12/11/16	4	0	0	.000	0	0	.000	0	0	.000	0	0	0	0.8	0	0	0	0	0	0	0	0.6	
S. DAKOTA ST.	12/14/16	8	0	0	.000	0	0	.000	0	0	.000	0	0	0	0.7	1	0	1	2	0	1	0	0.6	
C OF CHAR.	12/16/16	9	1	2	.500	0	0	.000	0	0	.000	1	1	2	0.8	1	0	1	1	0	0	2	0.7	
EVANSVILLE	12/18/16	10	0	2	.000	0	1	.000	0	0	.000	0	0	0	0.7	1	0	0	1	0	0	0	0.6	

24 Jessica Laemmle Career Statistics

Year	GP	GS	Min	Avg	FG	FGA	Pct	3FG	3FGA	Pct	FT	FTA	Pct	OReb	DReb	Reb	Avg	PF	FO	Ast	TO	Blk	Stl	Pts	Avg
2016-17	11	0	76	6.9	2	10	.200	0	3	.000	3	6	.500	3	5	8	0.7	13	0	6	7	0	4	7	0.6
TOTAL	11	0	76	6.9	2	10	.200	0	3	.000	3	6	.500	3	5	8	0.7	13	0	6	7	0	4	7	0.6

25 Asia Durr

G 5-10 So. - 1L Douglasville, Ga. (St. Pius X Catholic HS)



- Named to the preseason watch list for the Naismith Trophy, which recognizes the national player of the year, and the Wooden Award Preseason Top 30.
- Recorded fifth 20-point performance of the season, totaling 20 in 20 minutes against College of Charleston. She also had three rebounds and three assists.
- Connected on four 3-pointers against College of Charleston, the ninth game this season with at least three treys. She ranks second nationally in 3-pointers made (46), seventh in 3-pointers per game (3.54), and 13th in total field goals (84).
- Totaled 20 points and a season-best seven rebounds against Maryland. Her 27 field goal attempts are the eighth most by a player in school history.
- Torched the nets for a career-best 34 points on 12 of 18 shooting in only 23 minutes against Bowling Green. She knocked down 8 of 13 3-pointers. Her 34 points are the most by a UofL player since Shoni Schimmel scored 38 at USF on Jan. 30, 2013. The eight treys are tied for the second most in a game in school history and are the most since Schimmel hit nine against Memphis on Jan. 26, 2014.
- Opened the season with 24 points against UT Martin, connecting on seven 3-pointers. Her point total is tied for the third most in a season opener in school history, matching Kristin Mattox's mark against Miami (Ohio) on Nov. 26, 1993.
- Named to the Blue Ribbon Panel and coaches' preseason all-ACC teams.
- Voted to the 2015-16 Blue Ribbon Panel's and the coaches' all-ACC freshman team.
- Played in 31 games last year, starting two, averaging 11.0 points, 2.6 rebounds, 1.4 assists, and 1.1 steals.
- Named to the ACC All-Tournament Team after 15.0 points. She is just the fourth freshman in program history to earn all-tournament honors and first since Marla Inman Eltrevoog (1994-95).
- Was 29th in the ACC in scoring (11.0) and 10th in 3-point field goal percentage (.361). In conference-only stats, she was 21st in scoring (12.4), 14th in field goal percentage (.479), and third in free throw percentage (.875).
- Underwent successful surgery after a groin injury suffered during USA Basketball Trials in the summer 2015.
- Highest-rated recruit to sign at Louisville in school history, tabbed the No. 1 overall player by Full Court and Prospects Nation; listed No. 2 overall in the class of 2015 by espnW.
- Won the Gatorade Georgia Girls Basketball Player of the Year consecutively, collecting it for 2013-14 and 2014-15. Received the title of Miss Georgia Basketball for consecutive years by the Atlanta Tip-Off Club (2014, 2015). Selected the 2015 Parade Magazine Girls Basketball Player of the Year.
- Achieved multiple national honors during senior campaign: Parade Magazine All-American, WBCA high school All-American, Naismith Trophy All-American, and McDonald's All-American.
- Compiled MVP-worthy numbers in the McDonald's All-American Game with 14 points, six rebounds, and three assists; captured the McDonald's All-American Game 3-point championship two days prior.
- Shared Atlanta Journal-Constitution Girls Player of the Year accolades in 2015 after averaging 33.3 points (state best), 6.4 rebounds, and 1.5 steals as a senior.
- Finished career with 2,764 points, shooting better than 50 percent from the field, 706 rebounds, 254 assists, 266 steals, and 75 blocks; point total is most in school history for both genders.
- Chose Louisville over Maryland, Duke, Baylor, Tennessee, and Notre Dame.
- Born April 5, 1997 ... majoring in sport administration.

25 Asia Durr Season Highs

- Points ... 34 vs. Bowling Green (11/19)
- Reb. 7 vs. Maryland (12/1)
- Asst. 4 vs. Evansville (12/18)
- Blocks .. 1 (3 times) latest: vs. South Carolina (11/27)
- Steals ... 2 (4 times) latest: vs. S. Dakota St. (12/14)
- FGM 12 vs. Bowling Green (11/19)
- FGA 27 vs. Maryland (12/1)
- 3FGM ... 8 vs. Bowling Green (11/19)
- 3FGA ... 14 vs. Maryland (12/1)
- FT 4 vs. Charleston (12/16)
- FTA 6 vs. Charleston (12/16)

25 Asia Durr Career Highs

- Points ... 34 vs. Bowling Green (11/19/16)
- Reb. 8 vs. North Carolina (2/4/16)
- Asst. 5 vs. Clemson (1/28/16)
- vs. Tennessee Tech (12/18/15)
- Blocks ... 2 vs. Pittsburgh (2/11/16)
- vs. Kentucky (12/10/15)
- Steals ... 3 (3 times) latest: vs. Virginia (1/14/16)
- FGM 12 vs. Bowling Green (11/19/16)
- FGA 27 vs. Maryland (12/1/16)
- 3FGM ... 8 vs. Bowling Green (11/19/16)
- 3FGA ... 14 vs. Maryland (12/1)
- FT 8 vs. Wake Forest (1/31/16)
- vs. Syracuse (1/25/16)
- FTA 9 vs. Wake Forest (1/31/16)
- vs. Syracuse (1/25/16)

25 Asia Durr Game-by-Game

Opponent	Date	GS	3-Point			Rebounds			FT			PF			FO			A			TO			Blk			Stl			Pts			Avg		
			Min	FG	FGA	Pct	FG	FGA	Pct	Off	Def	Tot	Avg	PF	FO	A	TO	Blk	Stl	Pts	Avg														
at UT MARTIN	11/11/16	*	21	8	16	.500	7	13	.538	1	2	.500	0	0	0	0	0	0	0	0	0	0	1	0	24	24.0									
BELMONT	11/13/16	*	22	7	12	.583	4	8	.500	0	0	.000	0	1	1	0.5	2	0	3	1	0	2	18	21.0											
at MIDDLE TENN.	11/16/16	*	30	9	19	.474	4	10	.400	0	0	.000	1	0	1	0.7	1	0	3	2	0	1	22	21.3											
BOWLING GREEN	11/19/16	*	23	12	18	.667	8	13	.615	2	2	1.000	0	2	2	1.0	1	0	1	1	1	0	34	24.5											
LAFAYETTE	11/20/16	*	23	5	13	.385	1	5	.200	2	2	1.000	1	1	2	1.2	1	0	1	0	0	2	13	22.2											
CHATTANOOGA	11/21/16	*	18	3	4	.750	1	2	.500	0	0	.000	0	0	0	1.0	1	0	0	2	0	0	7	19.7											
vs S. CAROLINA	11/27/16	*	33	5	10	.500	3	5	.600	0	0	.000	0	2	2	1.1	0	0	0	3	1	2	13	18.7											
MARYLAND	12/01/16	*	37	8	27	.296	3	14	.214	1	3	.333	2	5	7	1.9	3	0	0	1	0	0	20	18.9											
KENTUCKY	12/04/16	*	42	5	18	.278	4	10	.400	1	4	.250	2	3	5	2.2	3	0	1	2	0	1	15	18.4											
W. KENTUCKY	12/11/16	*	36	6	16	.375	4	7	.571	0	0	.000	1	2	3	2.3	2	0	1	0	1	0	16	18.2											
S. DAKOTA ST.	12/14/16	*	25	4	11	.364	1	5	.200	0	1	.000	1	2	3	2.4	0	0	2	0	0	2	9	17.4											
C OF CHAR.	12/16/16	*	20	6	13	.462	4	10	.400	4	4	1.000	1	2	3	2.4	0	0	3	1	0	1	20	17.6											
EVANSVILLE	12/18/16	*	18	6	9	.667	2	3	.667	1	2	.500	1	1	2	2.4	2	0	4	0	0	1	15	17.4											

25 Asia Durr Career Statistics

Year	GP	GS	Min	Avg	FG	FGA	Pct	3FG	3FGA	Pct	FT	FTA	Pct	OReb	DReb	Reb	Avg	PF	FO	Ast	TO	Blk	Stl	Pts	Avg
2015-16	31	2	701	22.6	120	278	.432	44	122	.361	58	69	.841	16	65	81	2.6	49	1	43	47	11	33	342	11.0
2016-17	13	13	348	26.8	84	186	.452	46	105	.438	12	20	.600	10	21	31	2.4	16	0	19	13	4	12	226	17.4
TOTAL	44	15	1049	23.8	204	464	.440	90	227	.396	70	89	.787	26	86	112	2.5	65	1	62	60	15	45	568	12.9

33 Bionca Dunham

F 6-2 Fr. - HS Philadelphia, Pa. (Imhotep Institute Charter HS)



- Played 10 minutes against College of Charleston and registered a season-best 10 points on 5-of-7 shooting to go with four rebounds.
- Tallied six points on 3-of-3 shooting, also recording two steals, against Lafayette.
- Recorded four points and five rebounds against UT Martin in collegiate debut.
- A four-star recruit, according to Prospects Nation, at Imhotep Institute Charter High under coach Sabrina Allen; tabbed a three-star player by espnW Hoopgurlz and ranked 19th at the forward position in the class of 2016.
- Helped lead high school to three-consecutive Public League Championships; was tabbed the game's most valuable player for the third time in her career in 2016 after totaling 21 points, 14 rebounds, and four blocks in the victory.
- Earned MVP honors for the Public League Championship in 2014 after totaling 10 points and 12 rebounds.
- Averaged 19.0 points, 17.0 rebounds, and nearly five assists per game as a senior despite starting basketball as recent as eighth grade at 13 years old.
- Selected to play in Philadelphia's All-Public Showcase in 2016.
- Completed in the 2016 Philadelphia Girls' All City Classic Tournament and was named best defensive player.
- In addition to Louisville, was recruited by North Carolina, South Carolina, Temple, Pittsburgh, and Houston.
- Born Aug. 27, 1998 ... majoring in criminal justice.

33 Bionca Dunham Season Highs

Points ... 10 vs. Charleston (12/16)
 Reb. 5 vs. UT Martin (11/11)
 Asst. none
 Blocks .. 1 vs. Middle Tenn. (11/16), Lafayette (11/20)
 Steals ... 2 vs. Lafayette (11/20)
 FGM 5 vs. Charleston (12/16)
 FGA 7 vs. Charleston (12/16)
 3FGM ... none
 3FGA ... none
 FT 1 vs. Evansville (12/18)
 FTA 4 vs. Evansville (12/18)

33 Bionca Dunham Game-by-Game

Opponent	Date	GS	Min	FG	FGA	Pct	3-Point			Rebounds				PF	FO	A	TO	Blk	Stl	Pts	Avg		
							FG	FGA	Pct	FT	FTA	Pct	Off									Def	Tot
at UT MARTIN	11/11/16	12	2	3	.667	0	0	.000	0	2	.000	4	1	5	5.0	4	0	0	2	0	1	4	4.0
BELMONT	11/13/16	12	2	4	.500	0	0	.000	0	0	.000	0	2	2	3.5	1	0	0	0	1	1	4	4.0
at MIDDLE TENN.	11/16/16	7	1	2	.500	0	0	.000	0	0	.000	1	2	3	3.3	1	0	0	2	1	0	2	3.3
BOWLING GREEN	11/19/16	6	0	1	.000	0	0	.000	0	0	.000	2	2	4	3.5	0	0	0	1	0	0	0	2.5
LAFAYETTE	11/20/16	4	3	3	1.000	0	0	.000	0	0	.000	2	0	2	3.2	0	0	0	0	1	2	6	3.2
CHATTANOOGA	11/21/16	7	0	2	.000	0	0	.000	0	0	.000	1	2	3	3.2	1	0	0	1	0	0	0	2.7
vs S. CAROLINA	11/27/16	1	0	0	.000	0	0	.000	0	0	.000	0	0	0	2.7	0	0	0	0	0	0	0	2.3
W. KENTUCKY	12/11/16	3	0	0	.000	0	0	.000	0	0	.000	0	0	0	2.4	0	0	0	0	0	0	0	2.0
S. DAKOTA ST.	12/14/16	5	0	0	.000	0	0	.000	0	0	.000	0	2	2	2.3	0	0	0	0	0	0	0	1.8
C OF CHAR.	12/16/16	10	5	7	.714	0	0	.000	0	0	.000	3	1	4	2.5	1	0	0	2	0	0	10	2.6
EVANSVILLE	12/18/16	8	1	1	1.000	0	0	.000	1	4	.250	2	2	4	2.6	0	0	0	0	0	0	3	2.6

33 Bionca Dunham Career Statistics

Year	GP	GS	Min	Avg	FG	FGA	Pct	3FG	3FGA	Pct	FT	FTA	Pct	OReb	DReb	Reb	Avg	PF	FO	Ast	TO	Blk	Stl	Pts	Avg
2016-17	11	0	75	6.8	14	23	.609	0	0	.000	1	6	.167	15	14	29	2.6	8	0	0	8	3	4	29	2.6
TOTAL	11	0	75	6.8	14	23	.609	0	0	.000	1	6	.167	15	14	29	2.6	8	0	0	8	3	4	29	2.6

40 Ciera Johnson

C 6-4 Fr. - HS Duncanville, Texas (Duncanville HS)



- Has recorded at least one block in 10 games and leads the team with 22 swats. She ranks 45th nationally in the category.
- Produced seven points, three rebounds, two blocks, and two steals in 15 minutes against Evansville.
- Tallied fourth game with at least three blocks after totaling three against College of Charleston.
- Scored eight points on 2-of-4 shooting against South Dakota State, going 4 of 4 from the free throw line.
- Recorded a season-high four blocks against Bowling Green.
- Pulled down a season-best nine rebounds against Middle Tennessee. She also tallied six points and two steals that game.
- Scored a season-high 18 points on 6-of-7 shooting against Belmont.
- A 2016 McDonald's All-American from Duncanville High under coach Cathy Self-Morgan; also earned WBCA high school All-America honorable mention accolades as a senior.
- Tabbed a five-star recruit and the 13th-best player in the class of 2016, according to espnW Hoopgurlz; voted as the best player at the post position by espnW.
- Selected to play in the Jordan Brand Classic as part of the East Team; had three blocks and five rebounds in the game.
- Led school to the 2016 Class 6-A state title, completing an undefeated season at 39-0, and had 32 points and 11 rebounds in the semifinal victory.
- Averaged 14.9 points, 9.5 rebounds, 4.2 assists, and 3.2 blocks as a junior, while shooting 57 percent from the floor that year.
- Helped high school to a 35-1 mark as a sophomore, with its only loss coming in the Class 5-A state championship that snapped a 105-game winning streak; produced 21 points, 16 rebounds, and two blocks in the title contest.
- Was a member of the National Honor Society and graduated in the top 10 percent.
- Chose Louisville over Duke, Ohio State, Texas A&M, Texas, South Carolina, and Notre Dame.
- Born Dec. 29, 1997 ... majoring in business finance.

40 Ciera Johnson Season Highs

Points ... 18 vs. Belmont (11/13)
 Reb. 9 vs. Middle Tennessee (11/16)
 Asst. 2 vs. Middle Tenn. (11/16), Lafayette (11/20)
 Blocks .. 4 vs. Bowling Green (11/19)
 Steals ... 2 vs. Middle Tenn. (11/16), Evansville (12/18)
 FGM 6 vs. Belmont (11/13)
 FGA 8 vs. Middle Tenn. (11/16), Lafayette (11/20)
 3FGM ... none
 3FGA ... none
 FT 6 vs. Belmont (11/13)
 FTA 9 vs. Belmont (11/13)

40 Ciera Johnson Game-by-Game

Opponent	Date	GS	Min	FG	FGA	Pct	3-Point				Rebounds				PF	FO	A	TO	Blk	Stl	Pts	Avg		
							FG	FGA	Pct	FT	FTA	Pct	Off	Def									Tot	Avg
at UT MARTIN	11/11/16	*	19	1	3	.333	0	0	.000	0	0	.000	0	2	2	2.0	1	0	1	1	3	0	2	2.0
BELMONT	11/13/16	*	19	6	7	.857	0	0	.000	6	9	.667	0	0	0	1.0	2	0	0	0	2	0	18	10.0
at MIDDLE TENN.	11/16/16	*	22	3	8	.375	0	0	.000	0	2	.000	3	6	9	3.7	2	0	2	2	1	2	6	8.7
BOWLING GREEN	11/19/16	*	24	4	7	.571	0	0	.000	0	1	.000	2	2	4	3.8	4	0	1	1	4	0	8	8.5
LAFAYETTE	11/20/16	*	16	2	8	.250	0	0	.000	2	4	.500	7	0	7	4.4	0	0	2	0	1	1	6	8.0
CHATTANOOGA	11/21/16	*	15	4	4	1.000	0	0	.000	0	0	.000	1	2	3	4.2	1	0	0	2	2	0	8	8.0
vs S. CAROLINA	11/27/16	*	19	0	4	.000	0	0	.000	0	0	.000	1	2	3.9	5	1	0	0	3	0	0	6.9	
MARYLAND	12/01/16		6	1	1	1.000	0	0	.000	0	0	.000	0	0	0	3.4	0	0	0	1	0	0	2	6.3
KENTUCKY	12/04/16		3	0	0	.000	0	0	.000	0	0	.000	0	1	1	3.1	0	0	0	0	0	0	0	5.6
W. KENTUCKY	12/11/16		5	0	1	.000	0	0	.000	0	0	.000	0	1	1	2.9	0	0	0	1	0	0	0	5.0
S. DAKOTA ST.	12/14/16		12	2	4	.500	0	0	.000	4	4	1.000	0	1	1	2.7	3	0	0	0	1	1	8	5.3
C OF CHAR.	12/16/16		16	1	4	.250	0	0	.000	0	0	.000	1	4	5	2.9	2	0	0	2	3	1	2	5.0
EVANSVILLE	12/18/16		15	3	7	.429	0	0	.000	1	3	.333	2	1	3	2.9	3	0	0	0	2	2	7	5.2

40 Ciera Johnson Career Statistics

Year	GP	GS	Min	Avg	FG	FGA	Pct	3FG	3FGA	Pct	FT	FTA	Pct	OReb	DReb	Reb	Avg	PF	FO	Ast	TO	Blk	Stl	Pts	Avg
2016-17	13	7	191	14.7	27	58	.466	0	0	.000	13	23	.565	17	21	38	2.9	23	1	6	10	22	7	67	5.2
TOTAL	13	7	191	14.7	27	58	.466	0	0	.000	13	23	.565	17	21	38	2.9	23	1	6	10	22	7	67	5.2



2016-17 Louisville Women's Basketball
LOUISVILLE Combined Team Statistics (as of Dec 18, 2016)
All games



RECORD:	OVERALL	HOME	AWAY	NEUTRAL
ALL GAMES	11-2	9-1	2-0	0-1
CONFERENCE	0-0	0-0	0-0	0-0
NON-CONFERENCE	11-2	9-1	2-0	0-1

#	Player	gp-gs	min	avg	Total			3-Point		F-Throw		Rebounds				pf	dq	a	to	blk	stl	pts	avg
					fg-fga	fg%	3fg-fga	3fg%	ft-fa	ft%	off	def	tot	avg									
25	DURR, Asia	13-13	348	26.8	84-186	.452	46-105	.438	12-20	.600	10	21	31	2.4	16	0	19	13	4	12	226	17.4	
02	HINES-ALLEN, Myisha	13-13	276	21.2	65-133	.489	3-8	.375	13-21	.619	37	67	104	8.0	24	2	25	24	8	16	146	11.2	
04	MOORE, Mariya	13-13	352	27.1	48-118	.407	17-63	.270	32-41	.780	20	34	54	4.2	25	1	53	26	2	12	145	11.2	
00	JACKSON, Briahanna	13-6	316	24.3	42-97	.433	2-24	.083	11-20	.550	9	34	43	3.3	24	0	63	22	2	27	97	7.5	
21	SHOOK, Kylee	13-0	167	12.8	34-66	.515	5-15	.333	4-6	.667	13	28	41	3.2	17	1	6	10	13	4	77	5.9	
40	JOHNSON, Ciera	13-7	191	14.7	27-58	.466	0-0	.000	13-23	.565	17	21	38	2.9	23	1	6	10	22	7	67	5.2	
23	JONES, Jazmine	13-0	185	14.2	27-56	.482	0-1	.000	9-12	.750	18	28	46	3.5	18	0	20	13	1	12	63	4.8	
13	WALTON, Cortnee	7-6	162	23.1	16-31	.516	0-0	.000	1-4	.250	25	24	49	7.0	18	0	4	5	2	1	33	4.7	
03	FUEHRING, Sam	11-0	122	11.1	17-39	.436	0-2	.000	12-19	.632	18	16	34	3.1	14	0	4	8	0	5	46	4.2	
10	ZAMBROTTA, Sydney	12-0	99	8.3	15-34	.441	10-27	.370	5-6	.833	0	5	5	0.4	13	0	4	12	0	2	45	3.8	
33	DUNHAM, Bionca	11-0	75	6.8	14-23	.609	0-0	.000	1-6	.167	15	14	29	2.6	8	0	0	8	3	4	29	2.6	
15	JOHNSON, Taylor	13-7	173	13.3	11-32	.344	0-3	.000	11-15	.733	9	20	29	2.2	18	0	33	18	1	21	33	2.5	
22	JONES, Brianna	10-0	83	8.3	7-18	.389	0-1	.000	0-2	.000	6	12	18	1.8	4	0	6	5	1	2	14	1.4	
24	LAEMMLE, Jessica	11-0	76	6.9	2-10	.200	0-3	.000	3-6	.500	3	5	8	0.7	13	0	6	7	0	4	7	0.6	
Team											5	16	21		1		2						
Total.....		13	2625		409-901	.454	83-252	.329	127-201	.632	205	345	550	42.3	236	5	249	183	59	129	1028	79.1	
Opponents.....		13	2625		263-740	.355	76-269	.283	154-220	.700	161	329	490	37.7	232	2	135	288	38	78	756	58.2	

TEAM STATISTICS	LOU	OPP	Date	Opponent	Score	Att.
SCORING	1028	756	11/11/16	at UT MARTIN	w 100-57	3351
Points per game	79.1	58.2	11/13/16	BELMONT	w 73-50	8347
Scoring margin	+20.9	-	11/16/16	at MIDDLE TENNESSEE	w 91-72	4516
FIELD GOALS-ATT	409-901	263-740	^ 11/19/16	BOWLING GREEN	w 83-58	8194
Field goal pct	.454	.355	^ 11/20/16	LAFAYETTE	w 92-48	7668
3 POINT FG-ATT	83-252	76-269	^ 11/21/16	CHATTANOOGA	w 63-47	7719
3-point FG pct	.329	.283	@ 11/27/16	vs SOUTH CAROLINA	L 59-83	1812
3-pt FG made per game	6.4	5.8	~ 12/01/16	MARYLAND	L 72-78	7816
FREE THROWS-ATT	127-201	154-220	12/04/16	KENTUCKY	wot 69-67	12245
Free throw pct	.632	.700	12/11/16	WESTERN KENTUCKY	w 68-61	9168
F-Throws made per game	9.8	11.8	12/14/16	SOUTH DAKOTA STATE	w 83-30	7408
REBOUNDS	550	490	12/16/16	C OF CHARLESTON	w 86-58	7567
Rebounds per game	42.3	37.7	12/18/16	EVANSVILLE	w 89-47	8320
Rebounding margin	+4.6	-				
ASSISTS	249	135				
Assists per game	19.2	10.4				
TURNOVERS	183	288				
Turnovers per game	14.1	22.2				
Turnover margin	+8.1	-				
Assist/turnover ratio	1.4	0.5				
STEALS	129	78				
Steals per game	9.9	6.0				
BLOCKS	59	38				
Blocks per game	4.5	2.9				
ATTENDANCE	84452	9679				
Home games-Avg/Game	10-8445	2-3934				
Neutral site-Avg/Game	-	1-1812				

^ Basketball Hall of Fame Women's Challenge (Louisville, Ky.)
 @ Basketball Hall of Fame Women's Challenge (Springfield, Mass.)
 ~ ACC/Big Ten Challenge (Louisville, Ky.)
 * = Conference game

Score by Periods	1st	2nd	3rd	4th	OT	Totals
LOUISVILLE	295	227	283	210	13	1028
Opponents	160	173	212	200	11	756

2016-17 Women's Basketball Results

RECORD: 11-2 Overall (Home: 9-1; Away: 2-0; Neutral: 0-1; ACC: 0-0)

Date	Opponent	Dec.	Result	Margin	Rec.	High Scorer	High Rebounder	High Assists	Attendance
N 11	at UT Martin	W	100-57	+43	1-0	24 - Durr	10 - Hines-Allen	7 - T. Johnson	3,351
N 13	BELMONT	W	73-50	+23	2-0	18 - Durr, C. Johnson	8 - Hines-Allen	6 - Moore	8,347
N 16	at Middle Tennessee	W	91-72	+19	3-0	27 - Moore	9 - C. Johnson	6 - Moore	4,516
N 19	BOWLING GREEN ^	W	83-58	+25	4-0	34 - Durr	5 - Hines-Allen, J. Jones	6 - Moore	8,194
N 20	LAFAYETTE ^	W	92-48	+44	5-0	13 - Durr, Fuehring	14 - Hines-Allen	5 - Hines-Allen	7,668
N 21	CHATTANOOGA ^	W	63-47	+16	6-0	9 - Moore	10 - Hines-Allen	7 - Moore	7,719
N 27	vs. South Carolina &	L	59-83	-24	6-1	17 - Moore	6 - Hines-Allen	6 - T. Johnson	1,812
D 1	MARYLAND	L	72-78	-6	6-2	20 - Durr	9 - Walton	8 - Jackson	7,816
D 4	KENTUCKY	W (ot)	69-67	+2	7-2	26 - Hines-Allen	10 - Walton, Jackson	8 - Moore, Jackson	12,245
D 11	WESTERN KENTUCKY	W	68-61	+7	8-2	16 - Hines-Allen, Durr	11 - Hines-Allen	10 - Jackson	9,168
D 14	SOUTH DAKOTA ST.	W	83-30	+53	9-2	15 - J. Jones	9 - Walton	6 - Jackson	7,408
D 16	CHARLESTON	W	86-58	+28	10-2	20 - Durr	12 - Hines-Allen	5 - Jackson	7,567
D 18	EVANSVILLE	W	89-47	+42	11-2	18 - Shook	10 - Shook	4 - Durr	8,320

Remaining Games

Day	Date	Opponent	Site	Time	Television
DECEMBER					
Wed.	21	at Vanderbilt	Nashville, Tenn.	8 p.m.	SEC Network+
Thurs.	29	SYRACUSE	KFC YUM! CENTER	7 p.m.	ACC Network Extra

JANUARY

Mon.	2	at Duke	Durham, N.C.	7 p.m.	ESPNU
Thurs.	5	at Virginia	Charlottesville, Va.	7 p.m.	ACC Network Extra
Sun.	8	PITTSBURGH	KFC YUM! CENTER	4 p.m.	RSN/FOX
Thurs.	12	at Florida State	Tallahassee, Fla.	7 p.m.	ACC Network Extra
Sun.	15	MIAMI	KFC YUM! CENTER	1:30 p.m.	ESPN2/U
Wed.	18	GEORGIA TECH	KFC YUM! CENTER	7 p.m.	ACC Network Extra
Sun.	22	at USF	Tampa, Fla.	2 p.m.	ESPN2
Thurs.	26	at Clemson	Clemson, S.C.	7 p.m.	
Sun.	29	at Pittsburgh	Pittsburgh, Pa.	2 p.m.	

FEBRUARY

Thurs.	2	NC STATE	KFC YUM! CENTER	7 p.m.	ACC Network Extra
Mon.	6	at Notre Dame	South Bend, Ind.	7 p.m.	ESPN2
Thurs.	9	at Virginia Tech	Blacksburg, Va.	7 p.m.	ACC Network Extra
Sun.	12	BOSTON COLLEGE	KFC YUM! CENTER	3 p.m.	RSN/FOX
Sun.	19	NORTH CAROLINA	KFC YUM! CENTER	12 p.m.	ESPNU
Thurs.	23	VIRGINIA	KFC YUM! CENTER	7 p.m.	ACC Network Extra
Sun.	26	at Wake Forest	Winston-Salem, N.C.	2 p.m.	ACC Network Extra

MARCH

Wed-Sun.	1-5	ACC Tournament %	Conway, S.C.	TBA	
----------	-----	------------------	--------------	-----	--

^ Basketball Hall of Fame Women's Challenge (Louisville, Ky.)

& Basketball Hall of Fame Women's Challenge (Springfield, Mass.)

~ Big Ten/ACC Challenge (Louisville, Ky.)

% ACC Tournament (HTC Center, Conway, S.C.)

2016-17 Louisville Women's Basketball Team Superlatives

Louisville High	Louisville Low	Statistical Category	Opponent High	Opponent Low
100 vs. UT Martin (11/11)	59 vs. South Carolina (11/27)	Points	83 by South Carolina (11/27)	30 by South Dakota St. (12/14)
50 vs. Evansville (12/18)	29 vs. South Carolina (11/27)	First-Half Points	42 by Maryland (12/1)	14 by South Dakota St. (12/14)
51 vs. UT Martin (11/11)	26 vs. Kentucky (12/4) vs. Belmont (11/13)	Second-Half Points	48 by Middle Tennessee (11/16)	16 by South Dakota St. (12/14)
38 vs. Lafayette (11/20)	23 vs. South Carolina (11/27)	Field Goals	29 by Middle Tennessee (11/16)	9 by South Dakota St. (12/14)
83 vs. Charleston (12/16)	56 vs. W. Kentucky (12/11)	Field Goal Attempts	71 by Charleston (12/16)	43 by UT Martin (11/11)
.561 (37-66) vs. UT Martin (11/11)	.365 (27-74) vs. Kentucky (12/4)	FG Percentage	.481 (26-54) by Maryland (12/1)	.196 (9-46) by South Dakota St. (12/14)
10 vs. W. Kentucky (12/11)	3 vs. Chattanooga (11/21)	3-Point Field Goals	11 by Middle Tennessee (11/16)	2 by South Dakota St. (12/14)
27 vs. Charleston (12/16)	14 vs. Chattanooga (11/21)	3-Point Field Goal Att.	25 by Belmont (11/13)	15 by Maryland (12/1)
.588 (10-17) vs. W. Kentucky (12/11)	.174 (4-23) vs. Maryland (12/4)	3-Point FG Percentage*	.478 (11-23) by Middle Tenn. (11/16)	.091 (2-22) by South Dakota St. (12/14)
21 vs. Middle Tennessee (11/16)	4 vs. W. Kentucky (12/11) vs. Bowling Green (11/19)	Free Throws	24 by South Carolina (11/27)	3 by Middle Tennessee (11/16)
27 vs. Middle Tennessee (11/16)	6 vs. Bowling Green (11/19)	Free Throw Attempts	31 by South Carolina (11/27)	6 by Middle Tennessee (11/16)
1.000 (10-10) vs. Chattanooga (11/21)	.429 (6-14) vs. Maryland (12/1)	Free Throw Percentage*	.900 (9-10) by Chattanooga (11/21)	.421 (8-19) by Charleston (12/16)
28 vs. Lafayette (11/20)	9 vs. Middle Tennessee (11/16) vs. UT Martin (11/11)	Offensive Rebounds	19 by Charleston (12/16) by Belmont (11/13)	8 by Kentucky (12/4)
34 vs. Charleston (12/16) vs. Lafayette (11/20)	20 (3 times) <i>latest:</i> vs. Maryland (12/1)	Defensive Rebounds	38 by Maryland (12/1)	15 by W. Kentucky (12/11)
62 vs. Lafayette (11/20)	29 vs. South Carolina (11/27)	Total Rebounds	52 by Belmont (11/13)	25 by W. Kentucky (12/11)
27 vs. South Carolina (11/27)	13 vs. W. Kentucky (12/11) vs. Chattanooga (11/21)	Fouls	26 by Middle Tenn. (11/16)	7 by Chattanooga (11/21)
24 vs. Bowling Green (11/19)	14 vs. South Carolina (11/27)	Assists	20 by Middle Tenn. (11/16)	5 by South Dakota St. (12/14)
19 (3 times) <i>latest:</i> vs. Charleston (12/16)	7 vs. Maryland (12/1)	Turnovers	32 by Bowling Green (11/19) by UT Martin (11/11)	13 by South Carolina (11/27)
7 (4 times) <i>latest:</i> vs. Evansville (12/18)	2 (3 times) <i>latest:</i> vs. South Dakota St. (12/14)	Blocked Shots	8 by Chattanooga (11/21)	1 (3 times) by Evansville (12/18)
16 vs. Lafayette (11/20) vs. Bowling Green (11/19)	3 vs. W. Kentucky (12/11) vs. South Carolina (11/27)	Steals	8 (4 times) <i>latest:</i> by Charleston (12/16)	2 by Maryland (12/1)

* Percentage categories require a minimum of five attempts

2016-17 Louisville Women's Basketball Individual Superlatives

	Louisville	Opponent
Points	34 by Asia Durr vs. Bowling Green (11/19)	27 by Ty Petty, Middle Tennessee (11/16)
Field Goals Made	13 by Myisha Hines-Allen vs. Kentucky (12/4)	10 by Ty Petty, Middle Tennessee (11/16)
Field Goals Attempted	27 by Asia Durr vs. Maryland (12/1)	19 by Makayla Epps, Kentucky (12/4)
Highest FG Pct. (min. 5 made)	1.000 (6-6) by Sam Fuehring vs. Lafayette (11/20)	.875 (7-8) by Brionna Jones, Maryland (12/1)
3-Point Field Goals Made	8 by Asia Durr vs. Bowling Green (11/19)	5 by Ty Petty, Middle Tennessee (11/16)
3-Point Field Goals Attempted	14 by Asia Durr vs. Maryland (12/1)	9 by Sara Dickey, Evansville (12/18) by Ty Petty, Middle Tennessee (11/16)
3-Point FG Pct. (min. 3 made)	.833 (5-6) by Sydney Zambrotta vs. Western Kentucky (12/11)	.600 (3-5) (4 times) <i>latest:</i> by Darien Huff, Charleston (12/16)
Free Throws Made	7 by Mariya Moore vs. Middle Tennessee (11/16)	9 by Shatori Walker-Kimbrough, Maryland (12/1)
Free Throws Attempted	9 by Ciera Johnson vs. Belmont (11/13)	10 by Taylor Murray, Kentucky (12/4)
Free Throw Pct. (min. 6 made)	.875 (7-8) by Mariya Moore vs. Middle Tennessee (11/16)	1.000 (9-9) by Shatori Walker-Kimbrough, Maryland (12/1) (6-6) by Clare Glowniak, Bowling Green (11/19)
Offensive Rebounds	7 by Ciera Johnson vs. Lafayette (11/20)	8 by Brianna Boyd, Charleston (12/16) by Ivy Brown, Western Kentucky (12/11)
Defensive Rebounds	8 (4 times) <i>latest:</i> by Kylee Shook vs. Evansville (12/18)	16 by Makayla Epps, Kentucky (12/4)
Total Rebounds	14 by Myisha Hines-Allen vs. Lafayette (11/20)	16 by Makayla Epps, Kentucky (12/4)
Turnovers	5 by Myisha Hines-Allen vs. Kentucky (12/4) by Mariya Moore vs. South Carolina (11/27)	9 by Brooke Dossett, Evansville (12/18)
Assists	10 by Briahanna Jackson vs. Western Kentucky (12/11)	11 by Ty Petty, Middle Tennessee (11/16)
Blocked Shots	4 (3 times) <i>latest:</i> by Kylee Shook vs. Evansville (12/18)	7 by Jasmine Joyner, Chattanooga (11/21)
Steals	6 by Briahanna Jackson vs. Bowling Green (11/19)	4 by Alaina Coates, South Carolina (11/27)
Minutes Played (regulation game)	37 by Asia Durr vs. Maryland (12/1)	39 (3 times) <i>latest:</i> Nola Henry, Charleston (12/20)
Minutes Played (overtime game)	44 by Mariya Moore vs. Kentucky (12/4)	45 by Makenzie Cann, Kentucky (12/4) by Makayla Epps, Kentucky (12/4)

2016-17 Box Scores

Louisville 100, UT Martin 57 Nov. 11, 2016 – Martin, Tenn. (Elam Center)

Louisville, 100											
Player	Min	FG	3FG	FT	Reb	Ast	TO	BL	ST	PF	TP
Hines-Allen f	17	6-11	0-0	0-0	10	2	0	1	1	2	12
Moore f	21	2-4	1-3	4-5	2	2	0	0	1	1	9
C. Johnson c	19	1-3	0-0	0-0	2	1	1	3	0	1	2
T. Johnson g	15	2-2	0-0	0-0	2	7	1	0	2	3	4
Durr g	21	8-16	7-13	1-2	0	0	0	1	0	0	24
Jackson	19	6-8	0-0	1-3	2	4	3	1	4	1	13
Fuehring	11	1-2	0-0	5-6	1	0	0	0	0	2	7
Zambrotta	11	2-2	1-1	2-2	0	0	3	0	0	4	7
Shook	17	4-8	0-1	0-0	3	0	2	1	1	4	8
B. Jones	10	0-2	0-1	0-0	0	0	1	0	0	0	0
J. Jones	18	2-4	0-0	2-2	3	6	1	0	3	1	6
Laemmle	9	1-1	0-0	2-2	1	1	0	0	1	1	4
Dunham	12	2-3	0-0	0-2	5	0	2	0	1	4	4
Team					3						
Totals	200	37-66	9-19	17-24	34	23	15	7	14	24	100

Total FG% 1st H: 18-33 54.5% 2nd H: 19-33 57.6% Game: 56.1%
 3-Pt. FG% 1st H: 4-9 44.4% 2nd H: 5-10 50.0% Game: 47.4%
 F Throw % 1st H: 9-11 81.8% 2nd H: 8-13 61.5% Game: 70.8%

UT Martin, 57											
Player	Min	FG	3FG	FT	Reb	Ast	TO	BL	ST	PF	TP
Mason f	22	3-4	0-0	2-2	6	1	1	0	0	1	8
Feldhaus f	32	4-9	2-4	2-2	1	3	3	0	1	2	12
Spray g	24	3-9	2-8	0-0	3	2	1	0	0	3	8
Eubank g	23	1-3	0-0	5-9	5	0	3	1	1	3	7
Robertson g	21	1-2	0-0	2-2	3	2	6	0	1	1	4
Chris	4	0-0	0-0	1-2	1	1	0	0	0	0	1
Eubank	15	0-0	0-0	3-4	1	1	2	0	0	3	3
Hill	10	0-1	0-1	0-0	1	0	7	0	0	2	0
Boggs	11	0-2	0-0	0-0	1	1	1	0	0	1	0
Vincent	16	0-2	0-2	0-0	0	0	4	0	0	4	0
Taylor	22	5-11	4-7	0-0	4	0	2	0	1	3	14
Team					3		2				
Totals	200	17-43	8-22	15-21	29	11	32	1	4	23	57

Total FG% 1st H: 8-21 38.1% 2nd H: 9-22 40.9% Game: 39.5%
 3-Pt. FG% 1st H: 4-11 36.4% 2nd H: 4-11 36.4% Game: 36.4%
 F Throw % 1st H: 4-6 66.7% 2nd H: 11-15 73.3% Game: 71.4%

Score by Periods							Attendance: 3,351		
1st	2nd	3rd	4th	Total	Ties: 0		Lead Changes: 0		
Louisville	31	18	35	16	100				
UT Martin	7	17	15	18	57				

Louisville 83, Bowling Green 58 November 19, 2016 – KFC Yum! Center

Louisville, 83											
Player	Min	FG	3FG	FT	Reb	Ast	TO	BL	ST	PF	TP
Hines-Allen f	24	6-10	0-0	1-2	5	4	0	2	3	0	13
Moore f	27	1-9	1-5	0-0	2	6	3	0	2	1	3
C. Johnson c	24	4-7	0-0	0-1	4	1	1	4	0	4	4
T. Johnson g	11	1-2	0-0	0-0	2	3	0	0	2	0	2
Durr g	23	12-18	8-13	2-2	2	1	1	1	0	1	34
Jackson	28	3-9	0-4	1-1	3	3	1	0	6	1	7
Fuehring	9	1-3	0-0	0-0	3	2	3	0	0	3	2
Zambrotta	4	0-1	0-1	0-0	0	0	0	0	0	2	0
Shook	17	3-8	0-1	0-0	3	1	1	0	0	0	6
B. Jones	10	2-5	0-0	0-0	1	2	0	0	2	0	4
J. Jones	13	2-4	0-0	0-0	5	1	4	0	1	0	4
Laemmle	4	0-0	0-0	0-0	3	0	1	0	0	2	0
Dunham	6	0-1	0-0	0-0	4	0	1	0	0	0	0
Team					2						1
Totals	200	35-77	9-24	4-6	39	24	16	7	16	15	83

Total FG% 1st H: 15-42 35.7% 2nd H: 20-35 57.1% Game: 45.5%
 3-Pt. FG% 1st H: 3-13 23.1% 2nd H: 6-11 54.5% Game: 37.5%
 F Throw % 1st H: 3-4 75.0% 2nd H: 1-2 50.0% Game: 66.7%

Bowling Green, 58											
Player	Min	FG	3FG	FT	Reb	Ast	TO	BL	ST	PF	TP
Tunstall f	23	1-3	0-2	0-0	4	2	3	0	1	1	2
Siefker c	18	2-3	0-0	0-0	2	1	2	0	0	3	4
Myers g	20	3-6	1-3	2-2	3	1	1	0	0	2	9
Lambert g	22	3-4	1-2	0-0	2	2	7	1	1	1	7
Santoro g	23	1-5	1-4	1-2	7	1	4	0	0	1	4
Cecil	11	1-5	1-4	0-0	1	0	0	0	0	0	3
Konieczki	18	1-5	1-2	0-1	1	1	4	0	0	3	3
Thompson	16	3-8	2-3	1-1	4	1	0	0	0	0	9
Uecker	12	1-5	0-0	1-2	7	0	2	0	1	1	3
Puk	10	1-4	1-2	0-0	3	0	2	0	2	1	3
Glowniak	17	2-5	1-1	6-6	3	0	3	0	1	2	11
Cole	10	0-1	0-1	0-0	1	0	2	0	0	1	0
Team					2		2				
Totals	200	19-54	9-24	11-13	40	9	32	1	6	16	58

Total FG% 1st H: 10-23 43.5% 2nd H: 9-31 29.0% Game: 35.2%
 3-Pt. FG% 1st H: 5-14 35.7% 2nd H: 4-10 40.0% Game: 37.5%
 F Throw % 1st H: 2-4 50.0% 2nd H: 9-9 100.0% Game: 84.6%

Score by Periods							Attendance: 8,194		
1st	2nd	3rd	4th	Total	Ties: 1		Lead Changes: 0		
Bowling Green	16	11	16	15	58				
Louisville	22	14	31	16	83				

Louisville 73, Belmont 50 Nov. 13, 2016 – KFC Yum! Center

Louisville, 73											
Player	Min	FG	3FG	FT	Reb	Ast	TO	BL	ST	PF	TP
Hines-Allen f	15	2-5	0-0	0-0	8	1	2	0	2	1	4
Moore f	24	6-8	1-2	0-0	5	6	2	0	0	2	14
C. Johnson c	19	6-7	0-0	6-9	0	0	0	2	0	2	18
T. Johnson g	19	1-3	0-1	0-0	2	4	1	0	1	2	2
Durr g	22	7-12	4-8	0-0	1	3	1	0	2	2	18
Jackson	22	3-7	0-2	0-0	1	4	1	0	0	0	6
Fuehring	13	0-2	0-0	0-0	4	0	1	0	1	1	0
Zambrotta	7	0-3	0-2	0-0	1	0	0	0	1	2	0
Shook	19	2-6	0-3	0-0	4	1	1	0	1	0	4
B. Jones	8	0-2	0-0	0-0	1	0	0	0	0	0	0
J. Jones	13	2-4	0-0	0-0	2	1	0	0	0	2	4
Laemmle	7	0-2	0-1	0-2	1	1	0	0	1	3	0
Dunham	12	2-4	0-0	0-0	2	0	0	1	1	1	4
Totals	200	31-65	5-19	6-13	32	21	9	3	10	18	73

Total FG% 1st H: 20-36 55.6% 2nd H: 11-29 37.9% Game: 47.7%
 3-Pt. FG% 1st H: 4-12 33.3% 2nd H: 1-7 14.2% Game: 26.3%
 F Throw % 1st H: 3-6 50.0% 2nd H: 3-7 42.8% Game: 46.2%

Belmont, 50											
Player	Min	FG	3FG	FT	Reb	Ast	TO	BL	ST	PF	TP
Thompson f	24	1-4	0-0	0-0	5	1	1	0	1	1	2
Smith f	29	5-14	2-7	1-2	3	2	5	0	0	1	23
Roy f	28	3-6	0-1	2-4	5	1	1	0	1	0	8
McCabe c	25	3-11	0-3	0-0	7	1	0	1	0	4	6
Maggard g	30	3-10	2-7	0-0	1	2	6	0	0	1	8
Joubran	17	0-2	0-0	0-0	12	0	2	0	0	2	0
Jones	11	2-5	0-2	0-1	4	0	1	0	1	0	4
Lawson	8	2-3	0-0	2-4	3	0	3	0	0	0	6
Muensterman	14	1-7	0-4	0-0	3	0	2	0	0	2	2
Wright	14	0-1	0-1	1-2	7	0	2	1	1	2	1
Team					2						5
Totals	200	20-63	4-25	6-13	52	7	23	2	5	12	50

Total FG% 1st H: 11-33 33.3% 2nd H: 9-30 30.0% Game: 31.7%
 3-Pt. FG% 1st H: 3-11 27.3% 2nd H: 1-14 7.1% Game: 16.0%
 F Throw % 1st H: 0-0 0.0% 2nd H: 6-13 46.2% Game: 46.2%

Score by Periods							Attendance: 8,347		
1st	2nd	3rd	4th	Total	Ties: 2		Lead Changes: 3		
Belmont	16	9	12	13	50				
Louisville	26	21	19	7	73				

Louisville 92, Lafayette 48 November 20, 2016 – KFC Yum! Center

Louisville, 92											
Player	Min	FG	3FG	FT	Reb	Ast	TO	BL	ST	PF	TP
Hines-Allen f	17	3-9	0-0	1-2	14	5	2	1	2	2	7
Moore f	18	5-9	2-6	0-0	7	2	2	1	1	0	12
C. Johnson c	16	2-8	0-0	2-4	7	2	1	1	0	0	6
T. Johnson g	12	2-4	0-0	2-3	5	2	3	0	0	1	6
Durr g	23	5-13	1-5	2-2	2	1	0	0	2	1	13
Jackson	16	5-6	1-2	0-0	3	3	1	0	3	1	11
Fuehring	15	6-6	0-0	1-4	5	0	2	0	2	1	13
Zambrotta	10	1-3	0-2	1-2	0	0	3	0	0	0	3
Shook	22	4-8	0-1	2-2	5	0	1	1	0		

2016-17 Box Scores

South Carolina 83, Louisville 59 Nov. 27, 2016 – Springfield, Mass. (MassMutual Center)

Louisville, 59											
Player	Min	FG	3FG	FT	Reb	Ast	TO	BL	ST	PF	TP
Hines-Allen f	20	1-8	0-3	0-0	6	0	3	0	0	5	2
Moore f	33	4-13	3-8	6-7	3	2	5	0	0	1	17
C. Johnson c	19	0-4	0-0	0-0	2	0	0	3	0	5	0
T. Johnson g	20	1-5	0-1	0-0	3	6	2	1	0	1	2
Durr g	33	5-10	3-5	0-0	2	0	3	1	2	0	13
Jackson g	21	5-8	0-1	0-1	1	3	1	0	1	4	10
Fuehring	10	1-3	0-0	0-0	1	1	1	0	0	2	2
Zambrotta	3	0-0	0-0	0-0	0	1	0	0	0	0	0
Walton	14	1-2	0-0	0-0	3	0	1	0	0	2	2
Shook	10	2-2	0-0	0-0	2	1	0	0	0	5	4
B. Jones	3	0-0	0-0	0-0	0	0	0	0	0	0	0
J. Jones	11	3-5	0-0	0-0	2	0	1	0	0	2	6
Laemmle	2	0-0	0-0	1-2	0	0	0	0	0	0	1
Dunham	1	0-0	0-0	0-0	0	0	0	0	0	0	0
Team					4						
Totals	200	23-60	6-18	7-10	29	14	17	5	3	27	59

Total FG%	1st H:	10-24	41.7%	2nd H:	13-36	36.1%	Game:	38.3%
3-Pt. FG%	1st H:	4-7	57.1%	2nd H:	2-11	18.2%	Game:	33.3%
F Throw %	1st H:	5-6	83.3%	2nd H:	2-4	50.0%	Game:	70.0%

South Carolina, 83

Player	Min	FG	3FG	FT	Reb	Ast	TO	BL	ST	PF	TP
Wilson f	28	6-12	0-0	5-6	5	5	5	2	1	2	17
Coates c	31	5-9	0-0	7-9	14	1	3	1	4	2	17
Cuevas-Moore g	17	1-6	0-3	2-2	1	3	0	0	1	4	4
Davis g	20	5-10	3-5	0-0	8	1	1	0	0	3	13
Gray g	22	7-12	2-5	1-1	3	0	0	0	0	2	17
Patrick	3	0-0	0-0	0-0	0	0	0	0	0	0	0
Cliney	20	0-1	0-1	3-6	4	0	3	0	0	4	3
Bradshaw	4	0-1	0-0	0-0	0	0	0	0	0	0	0
Davis	9	0-1	0-1	1-2	2	0	0	0	0	0	1
Herbert Harrigan	17	3-5	0-0	5-5	2	1	0	1	1	1	11
Harris	29	0-3	0-2	0-0	0	6	1	0	0	1	0
Team					7						
Totals	200	27-60	5-17	24-31	46	17	13	4	7	19	83

Total FG%	1st H:	13-29	44.8%	2nd H:	14-31	45.2%	Game:	45.0%
3-Pt. FG%	1st H:	1-8	12.5%	2nd H:	4-9	44.4%	Game:	29.4%
F Throw %	1st H:	10-16	62.5%	2nd H:	14-15	93.3%	Game:	77.4%

Score by Periods	1st	2nd	3rd	4th	Total	Attendance:
Louisville	20	9	15	15	59	1,812
South Carolina	18	19	27	19	83	Ties: 5
						Lead Changes: 2

Louisville 68, Western Kentucky 61 Dec. 11, 2016 – KFC Yum! Center

Louisville, 68											
Player	Min	FG	3FG	FT	Reb	Ast	TO	BL	ST	PF	TP
Hines-Allen f	28	7-12	0-0	2-2	11	2	1	1	0	0	16
Moore f	35	3-6	1-3	0-2	9	8	4	0	2	3	7
Walton f	28	4-6	0-0	0-0	8	1	1	0	0	3	8
Jackson g	31	1-8	0-1	2-4	4	10	4	0	1	2	4
Durr g	36	6-16	4-7	0-0	3	1	0	1	0	2	16
Zambrotta	16	5-6	5-6	0-0	1	0	3	0	0	1	15
T. Johnson	2	0-0	0-0	0-0	0	0	3	0	0	1	0
Shook	5	1-1	0-0	0-0	0	0	0	0	0	0	2
J. Jones	7	0-0	0-0	0-1	4	0	2	0	0	1	0
Laemmle	4	0-0	0-0	0-0	0	0	0	0	0	0	0
Dunham	3	0-0	0-0	0-0	0	0	0	0	0	0	0
C. Johnson	5	0-1	0-0	0-0	1	0	1	0	0	0	0
Team											
Totals	200	27-56	10-17	4-9	41	22	19	2	3	13	68

Total FG%	1st H:	12-24	50.0%	2nd H:	15-32	46.8%	Game:	48.2%
3-Pt. FG%	1st H:	8-9	88.0%	2nd H:	2-8	25%	Game:	58.8%
F Throw %	1st H:	0-1	0.0%	2nd H:	4-8	50.0%	Game:	44.4%

Western Kentucky, 61

Player	Min	FG	3FG	FT	Reb	Ast	TO	BL	ST	PF	TP
T. Brown f	35	5-12	0-1	1-4	2	1	1	0	1	4	11
I. Brown f	28	4-8	2-5	2-2	9	0	1	1	0	1	12
Goodin-Rogers f	27	3-11	2-4	0-0	4	0	3	1	1	2	8
Jones g	35	2-5	1-3	0-0	1	2	4	0	2	1	5
Noble g	33	3-10	0-3	2-2	4	7	3	0	2	2	8
Frank	14	0-0	0-0	0-0	1	0	1	0	0	0	0
Creech	15	2-3	0-0	0-0	3	1	0	0	2	0	4
Coe	7	3-5	3-5	0-0	0	0	0	0	0	1	9
Priest	1	0-0	0-0	0-0	0	0	0	0	0	0	0
Smith	5	1-2	1-1	1-2	0	0	0	0	0	4	4
Team					1						
Totals	200	23-56	9-22	6-10	25	11	15	2	8	15	61

Total FG%	1st H:	15-29	51.7%	2nd H:	8-27	29.6%	Game:	41.1%
3-Pt. FG%	1st H:	5-10	50.0%	2nd H:	4-12	33.3%	Game:	40.9%
F Throw %	1st H:	3-4	75.0%	2nd H:	3-6	50.0%	Game:	60.0%

Score by Periods	1st	2nd	3rd	4th	Total	Attendance:
Western Kentucky	16	22	14	9	61	9,168
Louisville	14	18	12	24	68	Ties: 3
						Lead Changes: 12

Louisville 72, Maryland 78 Dec. 1, 2016 – KFC Yum! Center

Louisville, 73											
Player	Min	FG	3FG	FT	Reb	Ast	TO	BL	ST	PF	TP
Hines-Allen f	32	7-16	0-1	2-3	7	2	1	0	0	3	16
Moore f	31	5-10	1-3	2-3	1	1	2	1	3	5	13
Walton f	35	4-5	0-0	0-2	9	1	1	1	0	4	8
Jackson g	36	4-16	0-4	1-3	5	8	0	0	3	2	9
Durr g	37	8-27	3-14	1-3	7	0	1	0	0	3	20
Fuehring	2	0-0	0-0	0-0	1	0	0	0	0	0	0
Zambrotta	0+	0-0	0-0	0-0	0	0	0	0	0	0	0
T. Johnson	8	0-1	0-0	0-0	2	2	0	0	1	1	0
Shook	1	1-1	0-0	0-0	0	0	1	0	0	0	2
J. Jones	12	1-2	0-1	0-0	3	1	0	0	0	2	2
C. Johnson	6	1-1	0-0	0-0	0	0	1	0	0	0	2
Team					1						
Totals	200	31-79	4-23	6-14	35	15	7	2	7	20	72

Total FG%	1st H:	17-39	43.6%	2nd H:	14-40	35.0%	Game:	39.2%
3-Pt. FG%	1st H:	2-13	15.4%	2nd H:	2-10	20.0%	Game:	17.4%
F Throw %	1st H:	2-5	40.0%	2nd H:	4-9	44.4%	Game:	42.9%

Maryland, 78

Player	Min	FG	3FG	FT	Reb	Ast	TO	BL	ST	PF	TP
B. Jones c	24	7-8	0-0	2-3	12	1	2	0	0	4	16
Charles g	24	4-9	0-0	0-0	3	0	5	2	0	4	8
Slocum g	31	3-8	1-3	6-9	5	4	3	0	0	4	13
Conroy g	39	1-5	1-5	3-3	11	1	0	0	0	0	6
Walker-Kimbro g	40-	8-15	1-5	9-9	2	3	6	3	0	3	26
Small	5	0-2	0-1	0-0	1	0	0	0	1	2	0
Gillespie	2	0-0	0-0	2-2	1	0	0	0	1	0	2
Myers	4	0-0	0-0	0-0	1	0	0	0	0	0	0
Watson	2	0-1	0-1	0-0	0	0	0	0	0	0	0
S. Jones	11	2-2	0-0	1-2	1	0	0	0	0	0	5
Fraser	18	1-2	0-0	0-0	9	0	2	1	0	2	2
Team					2						
Totals	200	26-54	3-15	23-28	48	9	18	6	2	19	78

Total FG%	1st H:	15-27	55.6%	2nd H:	11-27	40.7%	Game:	48.1%
3-Pt. FG%	1st H:	2-9	22.2%	2nd H:	1-6	16.7%	Game:	20.0%
F Throw %	1st H:	10-14	71.4%	2nd H:	13-14	92.8%	Game:	82.1%

Score by Periods	1st	2nd	3rd	4th	Total	Attendance:
Maryland	20	22	20	16	78	7,816
Louisville	24	14	15	19	72	Ties: 4
						Lead Changes: 10

Louisville 83, South Dakota State 30 Dec. 14, 2016 – KFC Yum! Center

Louisville, 92											
Player	Min	FG	3FG	FT	Reb	Ast	TO	BL	ST	PF	TP
Hines-Allen f	21	5-11	0-0	0-1							

2016-17 Box Scores

Louisville 89, Evansville 47

Dec. 18, 2016 – KFC Yum! Center

Louisville, 59

Player	Min	FG	3FG	FT	Reb	Ast	TO	BL	ST	PF	TP
Hines-Allen	f 12	1-3	0-0	0-0	6	1	0	0	2	3	2
Moore	f 20	5-11	1-4	1-1	0	3	0	0	0	3	12
Walton	f 12	0-3	0-0	1-2	5	1	1	0	0	2	1
Jackson	g 22	5-9	1-3	0-0	2	2	2	0	1	0	11
Durr	g 18	6-9	2-3	1-2	2	4	0	0	1	2	15
Fuehring	16	2-5	0-0	2-2	6	0	1	0	0	1	6
Zambrotta	14	0-3	0-2	0-2	0	0	0	0	0	0	0
T. Johnson	12	2-3	0-0	2-4	2	2	1	0	3	1	6
Shook	17	8-10	2-2	0-0	10	0	2	4	2	0	18
B. Jones	10	1-2	0-0	0-0	1	1	1	1	0	0	2
J. Jones	14	3-6	0-0	0-0	8	3	0	0	0	2	6
Laemmle	10	0-2	0-1	0-0	0	0	1	0	0	1	0
Dunham	8	1-1	0-0	1-4	4	0	0	0	0	0	3
C. Johnson	15	3-7	0-0	1-3	3	0	0	2	2	3	7
Team					1						
Totals	200	37-74	6-15	9-18	50	17	9	7	11	18	89

Total FG%	1st H: 22-45	48.9%	2nd H: 15-29	51.7%	Game:	50.0%
3-Pt. FG%	1st H: 3-9	33.3%	2nd H: 3-6	50.0%	Game:	40.0%
F Throw %	1st H: 3-3	100%	2nd H: 6-15	40.0%	Game:	50.0%

Evansville, 47

Player	Min	FG	3FG	FT	Reb	Ast	TO	BL	ST	PF	TP
Gasper	f 20	1-6	1-3	3-4	1	1	2	0	0	2	6
Robinson	f 22	2-3	0-0	0-0	4	1	0	0	0	3	4
Williams	g 27	2-12	1-2	5-7	8	1	2	0	2	3	10
Dossett	g 34	2-6	1-3	1-2	0	2	9	0	0	1	6
Dickey	g 32	2-15	1-9	3-5	4	0	4	0	1	1	8
Lively	29	3-8	1-3	0-0	1	1	2	0	0	0	7
Langston	5	0-2	0-0	0-0	1	1	0	0	0	2	0
Hall	4	0-0	0-0	4-4	0	0	0	0	0	0	4
Sinnott	4	0-0	0-0	0-0	0	0	1	0	0	1	0
Hawkins	19	0-0	0-0	0-0	10	0	0	1	1	2	0
Coffman	4	1-3	0-0	0-0	1	0	0	0	0	1	2
Team					5						
Totals	200	13-55	5-20	16-22	35	7	20	1	4	16	47

Total FG%	1st H: 7-32	21.9%	2nd H: 6-23	26.1%	Game:	23.6%
3-Pt. FG%	1st H: 1-9	11.1%	2nd H: 4-11	36.4%	Game:	25.0%
F Throw %	1st H: 6-10	60.0%	2nd H: 10-12	83.3%	Game:	72.7%

Score by Periods	1st	2nd	3rd	4th	Total	Attendance:
Evansville	11	10	9	17	47	8,320
Louisville	27	23	28	11	59	Ties: 2
						Lead Changes: 0

2016-17 Louisville Women's Basketball Game-by-Game Team Statistics

Teams	FG-FGA	Pct	3FG-FGA	Pct	FT-FTA	Pct	O	D	Reb	PF-D	A	TO	Blk	Stl	1Q	2Q	3Q	4Q	OT	TOT
UT Martin	17-43	.395	8-22	.364	15-21	.714	9	20	29	23-0	11	32	1	4	7	17	15	18		57
LOUISVILLE	37-66	.561	9-19	.474	17-24	.708	14	20	34	24-0	23	15	7	14	31	18	35	16		100
Belmont	20-63	.317	4-25	.160	6-13	.462	19	33	52	12-0	7	23	2	5	16	9	12	13		50
LOUISVILLE	31-65	.477	5-19	.263	6-13	.462	4	28	32	18-0	21	9	3	10	26	21	19	7		73
Middle Tenn.	29-64	.453	11-23	.478	3-6	.500	9	21	30	26-1	20	20	2	8	9	15	25	23		72
LOUISVILLE	31-63	.492	8-21	.381	21-27	.778	15	29	44	14-0	19	16	7	7	22	19	29	21		91
Bowling Green	19-54	.352	9-24	.375	11-13	.846	12	28	40	16-0	9	32	1	6	16	11	16	15		58
LOUISVILLE	35-77	.455	9-24	.375	4-6	.667	15	24	39	15-0	24	16	7	16	22	14	31	16		83
Lafayette	18-60	.300	3-21	.143	9-13	.692	10	18	28	20-0	7	25	2	7	7	10	12	19		48
LOUISVILLE	38-78	.487	4-17	.235	12-22	.545	28	34	62	15-0	19	19	4	16	26	22	26	18		92
Chattanooga	17-57	.298	4-21	.190	9-10	.900	14	22	36	7-0	9	19	8	6	12	7	13	15		47
LOUISVILLE	25-57	.439	3-14	.214	10-10	1.000	10	26	36	13-0	18	14	5	9	25	10	16	12		63
South Carolina	27-60	.450	5-17	.294	24-31	.774	16	30	46	19-0	17	13	4	7	18	19	27	19		83
LOUISVILLE	23-60	.383	6-18	.333	7-10	.700	9	20	29	27-3	14	17	5	3	20	9	15	15		59
Maryland	26-54	.481	3-15	.200	23-28	.821	10	38	48	19-0	9	18	6	2	20	22	20	16		78
LOUISVILLE	31-79	.392	4-23	.174	6-14	.429	15	20	35	20-1	15	7	2	7	24	14	15	19		72
Kentucky	24-57	.421	5-17	.294	14-20	.700	8	32	40	23-1	9	19	2	8	11	15	17	13	11	67
LOUISVILLE	27-74	.365	6-23	.261	9-20	.450	21	28	49	22-1	19	12	3	8	18	12	14	12	13	69
W. Kentucky	23-56	.411	9-22	.409	6-10	.600	10	15	25	15-0	11	15	2	8	16	22	14	9		61
LOUISVILLE	27-56	.482	10-17	.588	4-9	.444	16	25	41	13-0	22	19	2	3	14	18	12	24		68
South Dakota St.	9-46	.196	2-22	.091	10-14	.714	12	25	37	17-0	5	30	3	5	9	5	11	5		30
LOUISVILLE	35-69	.507	5-15	.333	8-12	.667	12	26	38	16-0	18	11	2	15	17	21	23	22		83
C of Charleston	21-71	.296	8-20	.400	8-19	.421	19	25	44	19-0	14	22	4	8	8	11	21	18		58
LOUISVILLE	32-83	.386	8-27	.296	14-16	.875	27	34	61	21-0	20	19	5	10	23	26	20	17		86
Evansville	13-55	.236	5-20	.250	16-22	.727	13	22	35	16-0	7	20	1	4	11	10	9	17		47
LOUISVILLE	37-74	.500	6-15	.400	9-18	.500	19	31	50	18-0	17	9	7	11	27	23	28	11		89

Specialty Stats Game-by-Game (UL/Opp)

Opponent	Date	Paint	Off TO	2nd Chnc	Fast Brk	Bench
UT Martin	11/11/16	40/16	37/7	19/7	17/2	49/18
Belmont	11/13/16	34/24	19/14	2/3	12/6	18/13
Middle Tenn.	11/16/16	34/28	19/12	12/2	8/2	16/22
Bowling Green	11/19/16	38/14	40/10	10/9	6/2	23/32
Lafayette	11/20/16	54/18	33/13	26/5	14/0	48/37
Chattanooga	11/21/16	26/22	18/14	8/9	8/0	28/4
S. Carolina	11/27/16	24/40	15/18	5/20	2/14	25/15
Maryland	12/01/16	44/32	20/10	17/15	4/2	6/9
Kentucky	12/04/16	32/24	18/8	17/4	2/6	11/3
W. Kentucky	12/11/16	28/18	18/29	15/8	4/0	17/17
S. Dakota St.	12/14/16	42/14	38/10	15/10	12/0	51/7
Charleston	12/16/16	42/22	18/14	35/13	0/4	34/23
Evansville	12/18/18	56/12	26/10	18/7	12/0	48/13

2016-17 Louisville Game-By-Game Individual Points, Rebounds & Assists

Opponent	Date	Score	00		02		03		04		10		13		15	
			JACKSON,BR	HINES-ALLE	FUEHRING,S	MOORE,MARI	ZAMBROTTA,	WALTON,COR	JOHNSON,TA							
at UT MARTIN	11/11/16	100-57	w	13-2-4	12-10-2	7-1-0	9-2-2	7-0-0	DNP	4-2-7						
BELMONT	11/13/16	73-50	w	6-1-4	4-8-1	0-4-0	13-5-6	0-1-0	DNP	2-2-4						
at MIDDLE TENNESSEE	11/16/16	91-72	w	7-2-2	17-7-4	4-5-0	27-6-6	0-1-0	DNP	3-3-1						
BOWLING GREEN	11/19/16	83-58	w	7-3-3	13-5-4	2-3-2	3-2-6	0-0-0	DNP	2-2-3						
LAFAYETTE	11/20/16	92-48	w	11-3-3	7-14-5	13-5-0	12-7-0	3-0-0	DNP	6-5-2						
CHATTANOOGA	11/21/16	63-47	w	8-3-5	7-10-2	2-2-0	9-4-7	2-0-0	DNP	4-2-4						
vs SOUTH CAROLINA	11/27/16	59-83	L	10-1-3	2-6-0	2-1-1	17-3-2	0-0-1	2-3-0	2-3-6						
MARYLAND	12/01/16	72-78	L	9-5-8	16-7-2	0-1-0	13-1-1	0-0-0	8-9-1	0-2-2						
KENTUCKY	12/04/16	69-67	w	5-10-8	26-5-0	DNP	8-9-8	DNP	4-10-0	0-1-1						
WESTERN KENTUCKY	12/11/16	68-61	w	4-4-10	16-11-2	DNP	7-9-8	15-1-0	8-8-1	0-0-0						
SOUTH DAKOTA STATE	12/14/16	83-30	w	4-5-6	10-3-0	4-2-0	3-2-3	10-1-2	6-9-0	2-3-1						
C OF CHARLESTON	12/16/16	86-58	w	2-2-5	14-12-2	6-4-1	12-4-1	8-1-1	4-5-1	2-2-0						
EVANSVILLE	12/18/16	89-47	w	11-2-2	2-6-1	6-6-0	12-0-3	0-0-0	1-5-1	6-2-2						

Opponent	Date	Score	21		22		23		24		25		33		40	
			SHOOK,KYLE	JONES,BRIA	JONES,JAZM	LAEMMLE,JE	DURR,ASIA	DUNHAM,BIO	JOHNSON,CI							
at UT MARTIN	11/11/16	100-57	w	8-3-0	0-0-0	6-3-6	4-1-1	24-0-0	4-5-0	2-2-1						
BELMONT	11/13/16	73-50	w	4-4-1	0-1-0	4-2-1	0-1-1	18-1-3	4-2-0	18-0-0						
at MIDDLE TENNESSEE	11/16/16	91-72	w	3-4-1	0-0-0	0-1-0	0-0-0	22-1-3	2-3-0	6-9-2						
BOWLING GREEN	11/19/16	83-58	w	6-3-1	4-1-2	4-5-1	0-3-0	34-2-1	0-4-0	8-4-1						
LAFAYETTE	11/20/16	92-48	w	10-5-0	2-6-0	3-3-4	0-0-2	13-2-1	6-2-0	6-7-2						
CHATTANOOGA	11/21/16	63-47	w	6-5-0	2-0-0	8-1-0	0-1-0	7-0-0	0-3-0	8-3-0						
vs SOUTH CAROLINA	11/27/16	59-83	L	4-2-1	0-0-0	6-2-0	1-0-0	13-2-0	0-0-0	0-2-0						
MARYLAND	12/01/16	72-78	L	2-0-0	DNP	2-2-1	DNP	20-7-0	DNP	2-0-0						
KENTUCKY	12/04/16	69-67	w	4-2-0	DNP	7-4-1	DNP	15-5-1	DNP	0-1-0						
WESTERN KENTUCKY	12/11/16	68-61	w	2-0-0	DNP	0-4-0	0-0-0	16-3-1	0-0-0	0-1-0						
SOUTH DAKOTA STATE	12/14/16	83-30	w	8-0-1	4-3-1	15-4-1	0-0-1	9-3-2	0-2-0	8-1-0						
C OF CHARLESTON	12/16/16	86-58	w	2-3-1	0-6-2	2-7-2	2-2-1	20-3-3	10-4-0	2-5-0						
EVANSVILLE	12/18/16	89-47	w	18-10-0	2-1-1	6-8-3	0-0-0	15-2-4	3-4-0	7-3-0						

Team Extended Statistics

#	Player	gp-gs	min	Total		3-Point		F-Throw		Rebounds																	
				avg	fg-fga	fg%	3fg-fga	3fg%	ft-fa	ft%	off	def	tot	avg	pf	dq	a	a/g	to	to/g	a/to	blk	blk/g	stl	stl/g	pts	avg
25	DURR, Asia	13-13	348	26.8	84-186	.452	46-105	.438	12-20	.600	10	21	31	2.4	16	0	19	1.46	13	1.00	1.46	4	0.31	12	0.92	226	17.4
02	HINES-ALLEN, Myisha	13-13	276	21.2	65-133	.489	3-8	.375	13-21	.619	37	67	104	8.0	24	2	25	1.92	24	1.85	1.04	8	0.62	16	1.23	146	11.2
04	MOORE, Mariya	13-13	352	27.1	48-118	.407	17-63	.270	32-41	.780	20	34	54	4.2	25	1	53	4.08	26	2.00	2.04	2	0.15	12	0.92	145	11.2
00	JACKSON, Briahanna	13-6	316	24.3	42-97	.433	2-24	.083	11-20	.550	9	34	43	3.3	24	0	63	4.85	22	1.69	2.86	2	0.15	27	2.08	97	7.5
21	SHOOK, Kylee	13-0	167	12.8	34-66	.515	5-15	.333	4-6	.667	13	28	41	3.2	17	1	6	0.46	10	0.77	0.60	13	1.00	4	0.31	77	5.9
40	JOHNSON, Ciera	13-7	191	14.7	27-58	.466	0-0	.000	13-23	.565	17	21	38	2.9	23	1	6	0.46	10	0.77	0.60	22	1.69	7	0.54	67	5.2
23	JONES, Jazmine	13-0	185	14.2	27-56	.482	0-1	.000	9-12	.750	18	28	46	3.5	18	0	20	1.54	13	1.00	1.54	1	0.08	12	0.92	63	4.8
13	WALTON, Cortnee	7-6	162	23.1	16-31	.516	0-0	.000	1-4	.250	25	24	49	7.0	18	0	4	0.57	5	0.71	0.80	2	0.29	1	0.14	33	4.7
03	FUEHRING, Sam	11-0	122	11.1	17-39	.436	0-2	.000	12-19	.632	18	16	34	3.1	14	0	4	0.36	8	0.73	0.50	0	0.00	5	0.45	46	4.2
10	ZAMBROTTA, Sydney	12-0	99	8.3	15-34	.441	10-27	.370	5-6	.833	0	5	5	0.4	13	0	4	0.33	12	1.00	0.33	0	0.00	2	0.17	45	3.8
33	DUNHAM, Bionca	11-0	75	6.8	14-23	.609	0-0	.000	1-6	.167	15	14	29	2.6	8	0	0	0.00	8	0.73	0.00	3	0.27	4	0.36	29	2.6
15	JOHNSON, Taylor	13-7	173	13.3	11-32	.344	0-3	.000	11-15	.733	9	20	29	2.2	18	0	33	2.54	18	1.38	1.83	1	0.08	21	1.62	33	2.5
22	JONES, Brianna	10-0	83	8.3	7-18	.389	0-1	.000	0-2	.000	6	12	18	1.8	4	0	6	0.60	5	0.50	1.20	1	0.10	2	0.20	14	1.4
24	LAEMMLE, Jessica	11-0	76	6.9	2-10	.200	0-3	.000	3-6	.500	3	5	8	0.7	13	0	6	0.55	7	0.64	0.86	0	0.00	4	0.36	7	0.6
Total.....		13	2625		409-901	.454	83-252	.329	127-201	.632	205	345	550	42.3	236	5	249	19.15	183	14.08	1.36	59	4.54	129	9.92	1028	79.1
Opponents.....		13	2625		263-740	.355	76-269	.283	154-220	.700	161	329	490	37.7	232	2	135	10.38	288	22.15	0.47	38	2.92	78	6.00	756	58.2

Score by Periods	1st	2nd	3rd	4th	OT	Totals
LOUISVILLE	295	227	283	210	13	1028
Opponents	160	173	212	200	11	756

2016-17 Louisville Women's Basketball Miscellaneous Statistics

Louisville's Record When the Cardinals ...

Lead at halftime.....	10-0
Trail at halftime.....	1-2
Tied at halftime.....	0-0
Shoot better from the field than opponent.....	10-0
Shoot worse from the field than opponent.....	1-2
Shoot the same from the field as opponent.....	0-0
Shoot 50 percent or better from the field.....	3-0
Shoot below 50 percent from the field.....	8-2
Opp. shoots 50 pct. or better from the field.....	0-0
Opp. shoots below 50 pct. from the field.....	11-2
Make more than 7 3-point goals.....	5-0
Make 7 or fewer 3-point goals.....	6-2
Attempt 20 or more 3-point field goals.....	4-1
Attempt less than 20 3-point field goals.....	7-1
Make more free throws than opponent.....	5-0
Opponent makes more free throws.....	5-2
Free throws made are even.....	1-0
Outrebound their opponent.....	8-0
Are outrebounded by their opponent.....	2-2
Rebounds are even.....	1-0
Bench outscores the opposing bench.....	8-1
Bench points are even.....	1-0
Opponent bench outscores their bench.....	2-1
Commit fewer turnovers than opponent.....	10-1
Commit more turnovers than opponent.....	1-1
Turnovers are even.....	0-0
Lead with 5:00 remaining.....	10-0
Trail with 5:00 remaining.....	1-1
Are tied with 5:00 remaining.....	0-1
Play an overtime game.....	1-0
1-4 point margins.....	1-0
5-10 point margins.....	1-1
11-20 point margins.....	2-0
21 or more point margins.....	7-1
vs. AP Top 25 teams.....	1-2
Play at home.....	9-1
Play on the road.....	2-0
Play on a neutral court.....	0-1
Score 59 points or less.....	0-1
Score 60-69 points.....	3-0
Score 70-79 points.....	1-1
Score 80-89 points.....	4-0
Score 90 points or more.....	3-0
Allow 59 points or less.....	8-0
Allow 60-69 points.....	2-0
Allow 70-79 points.....	1-1
Allow 80-89 points.....	0-1
Allow 90 points or more.....	0-0
Play after a loss.....	1-1
Score the first basket.....	10-0

Double-Doubles

Hines-Allen.....	3
Shook.....	1

Points off Turnovers

Louisville.....	319	Opponents.....	169
-----------------	-----	----------------	-----

Bench Scoring

Louisville.....	374 (28.8)	Opp.....	213 (16.4)
-----------------	------------	----------	------------

Rebounding Advantage

Louisville.....	8	Opponents.....	4
-----------------	---	----------------	---

Attendance

Home.....	84,452	(8,445 avg.)
Away.....	7,867	(3,934 avg.)
Neutral.....	1,812	(1,812 avg.)
Total.....	94,131	(7,241 avg.)

Double-Figure

Scoring Games	
Durr.....	11
Hines-Allen.....	8
Moore.....	7
Jackson.....	4
Shook.....	2
Zambrotta.....	2
Dunham.....	1
Fuehring.....	1
C. Johnson.....	1
J. Jones.....	1

Games Leading

UofL in Scoring	
Durr.....	7
Moore.....	3
Hines-Allen.....	2
Fuehring.....	1
C. Johnson.....	1
J. Jones.....	1
Shook.....	1

Games Leading

UofL in Rebounding	
Hines-Allen.....	8
Walton.....	3
C. Johnson.....	1
J. Jones.....	1
Jackson.....	1
Shook.....	1

Games Leading

UofL in Assists	
Jackson.....	5
Moore.....	5
T. Johnson.....	2
Durr.....	1
Hines-Allen.....	1

Scored Louisville's

First Points	
Who	
Moore.....	4
Durr.....	3
Hines-Allen.....	2
C. Johnson.....	2
T. Johnson.....	1
Walton.....	1

How

Jumper.....	5
Layup.....	5
3-Pointer.....	1
Free Throw.....	1
Tip-in.....	1

Jump Balls Controlled

Louisville.....	11 (Hines-Allen 11)
Opponents.....	3
* Louisville won 1 jump ball in overtime	

Starting Lineups

W-L	Forward	Forward	Center/Forward	Guard	Guard
6-1	Hines-Allen	Moore	C. Johnson	T. Johnson	Durr
5-1	Hines-Allen	Moore	Walton	Jackson	Durr

Scoring Summary

	1st Pd.	2nd Pd.	3rd Pd.	4th Pd.	OT	Total
Louisville	295	227	283	210	*	1028
Opponents	160	173	212	200	*	756

*Overtime OT1

Louisville	13
Opponents	11

Leads and Deficits

UofL's Biggest Halftime Lead.....	31 (48-17) vs. Lafayette (11/20)
UofL's Biggest Halftime Lead Blown.....	4 (30-26) vs. Kentucky (12/4)
UofL's Biggest Halftime Deficit Overcome.....	6 (32-38) vs. W. Kentucky (12/11)
UofL's Biggest 2nd Half Lead.....	53 (83-30) vs. S. Dakota St. (12/14)
UofL's Biggest 2nd Half Lead Blown.....	5 (43-38) vs. Kentucky (12/4)
UofL's Biggest 2nd Half Deficit.....	28 (50-78) vs. South Carolina (11/27)
UofL's Biggest 2nd Half Deficit Overcome.....	10 (47-57) vs. Maryland (12/1)
UofL's Biggest Overall Lead.....	53 (83-30) vs. S. Dakota St. (12/14)
UofL's Biggest Lead Blown.....	9 (18-9) vs. Kentucky (12/4)
	(18-9) vs. Maryland (12/1)
UofL's Biggest Overall Deficit.....	28 (78-50) vs. South Carolina (11/27)
UofL's Biggest Deficit Overcome.....	10 (47-57) vs. Maryland (12/1)

Home, Road, Quarter, and Half Statistics

Halftime Leads.....	UofL 10, Opp. 3
FG% in KFC Yum! Center.....	.447 (318-712)
FG% on the Road.....	.481 (91-189)
3-Pt. FG% in KFC Yum! Center.....	.309 (60-194)
3-Pt. FG% on the Road.....	.397 (23-58)
FT% in KFC Yum! Center.....	.586 (82-140)
FT% on the Road.....	.738 (45-61)
Scoring Avg. in KFC Yum! Center.....	77.8 (778 pts.)
Scoring Average on the Road.....	83.3 (250 pts.)
Opp. Scoring Avg. in KFC Yum! Center.....	54.4 (544 pts.)
Opp. Scoring Avg. on the Road.....	70.7 (212 pts.)
Most 1st Quarter Points.....	31 vs. UT Martin (11/11)
Most 2nd Quarter Points.....	26 vs. Charleston (12/16)
Most 1st Half Points.....	50 vs. Evansville (12/18)
Most 3rd Quarter Points.....	35 vs. UT Martin (11/11)
Most 4th Quarter Points.....	24 vs. W. Kentucky (12/11)
Most 2nd Half Points.....	51 vs. UT Martin (11/11)
Fewest 1st Quarter Points.....	14 vs. W. Kentucky (12/11)
Fewest 2nd Quarter Points.....	9 vs. South Carolina (11/27)
Fewest 1st Half Points.....	29 vs. South Carolina (11/27)
Fewest 3rd Quarter Points.....	14 vs. Kentucky (12/4)
Fewest 4th Quarter Points.....	7 vs. Belmont (11/13)
Fewest 2nd Half Points.....	26 vs. Kentucky (12/4)
	vs. Belmont (11/13)
Largest Halftime Lead.....	31 vs. Lafayette (11/20)
Largest Halftime Deficit.....	8 vs. South Carolina (11/27)

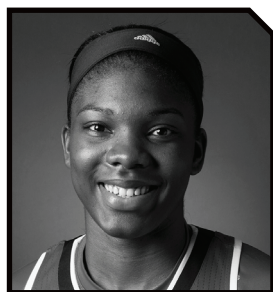
Opponents' Quarter Breakdown

Fewest 1st Quarter Points.....	7 by Lafayette (11/20)
	by UT Martin (11/11)
Fewest 2nd Quarter Points.....	5 by South Dakota State (12/14)
Fewest 3rd Quarter Points.....	9 by Evansville (12/18)
Fewest 4th Quarter Points.....	5 by South Dakota State (12/14)

2016-17 Louisville Cardinals - Photo Roster



00 Briahanna Jackson
G | 5-6 | r-Sr.
Tampa, Fla.
(UCF)



2 Myisha Hines-Allen
F | 6-2 | Jr.
Montclair, N.J.
(Montclair)



3 Sam Fuehring
F | 6-3 | So.
Wanaque, N.J.
(Immaculate Conception)



4 Mariya Moore
F | 6-0 | Jr.
Hercules, Calif.
(Salesian)



10 Sydney Zambrotta
G | 5-9 | Fr.
North Babylon, N.Y.
(Christ the King)



11 Arica Carter
G | 5-8 | Jr.
Los Angeles, Calif.
(Long Beach Poly)



13 Cortnee Walton
F | 6-3 | r-Sr.
Surprise, Ariz.
(St. Mary's Catholic)



15 Taylor Johnson
G | 5-7 | Gr.
Frankfort, Ill.
(Loyola Chicago)



21 Kylee Shook
F | 6-4 | Fr.
Colorado Springs, Colo.
(Mesa Ridge)



22 Brianna Jones
G | 5-9 | So.
North Babylon, N.Y.
(North Babylon)



23 Jazmine Jones
G | 6-0 | Fr.
Tallahassee, Fla.
(Florida AGM Devel.)



24 Jessica Laemmler
G | 5-2 | Fr.
Louisville, Ky.
(Mercy Academy)



25 Asia Durr
G | 5-10 | So.
Douglasville, Ga.
(St. Pius X Catholic)



33 Bionca Dunham
F | 6-2 | Fr.
Philadelphia, Pa.
(Imhotep Institute Charter)



40 Ciera Johnson
C | 6-4 | Fr.
Duncanville, Texas
(Duncanville)

On the Bench



Jeff Walz
Head Coach



Stephanie Norman
Associate Head Coach



Samantha Williams
Assistant Coach



Sam Purcell
Assistant Coach



Kate Tucker
Director of BB Ops.



Pronunciation Guide:

Arica (air-IH-kuh)
Brianna (bree-anne-uh)
Briahanna (bree-aw-nuh)
Durr (dur)
Fuehring (FYUR-ing)
Laemmler (lim-LEE)
Myisha (my-EE-shuh)
Mariya (muh-RYE-uh)
Walz (walls)
Zambrotta (zam-BRAW-tuh)