

SAINT LOUIS BILLIKENS

TV: FOX Sports Midwest

(Pat Parris, Scott Highmark)

Radio: 101 ESPN • Bob Ramsey, Earl Austin Jr.

On the Web: SLUBillikens.com / VUCommodores.com

Billiken Media Relations Contact:

Brian Kunderman • 314-808-4868 | bkunderm@slu.edu

Saint Louis Billikens Schedule/Results

NOVEMBER

Sat., 15	Southern Illinois	W, 62-59
Tue., 18	at Indiana State	W, 69-56
Sun., 23	Texas A&M-Corpus Christi#	L, 56-62
Tue., 25	North Carolina A&T#	W, 57-54
Fri., 28	vs. Mississippi State#	L, 50-75
Sat., 29	vs. Bradley#	W, 60-57

DECEMBER

Tue., 2	Rockhurst	W, 80-48
Sat., 6	at Wichita State	L, 52-81
Tue., 9	South Dakota State	L, 55-62
Sat., 13	SIUE	W, 67-61
Wed., 17	Texas Pan-American	W, 75-69
Sun., 21	Vermont	W, 58-55
Wed., 31	Vanderbilt	1 p.m.

JANUARY

Sat., 3	Rhode Island*	2 p.m.
Tue., 6	at George Washington*	6 p.m.
Sat., 10	at Davidson*	6 p.m.
Wed., 14	Duquesne*	7 p.m.
Sat., 17	at Dayton*	11:30 a.m.
Fri., 23	VCU*	6 p.m.
Thu., 29	at George Mason*	6 p.m.
Sat., 31	Massachusetts*	3 p.m.

FEBRUARY

Tue., 3	Saint Joseph's*	6:30 p.m.
Sat., 7	at Fordham*	3 p.m.
Tue., 10	Dayton*	8:30 p.m.
Sat., 14	at Rhode Island*	1 p.m.
Tue., 17	at VCU*	6:30 p.m.
Sun., 22	La Salle*	1:30 p.m.
Wed., 25	at Duquesne*	6 p.m.
Sat., 28	George Mason*	6 p.m.

MARCH

Wed., 4	St. Bonaventure*	7 p.m.
Sat., 7	at Richmond*	7 p.m.

2014 Corpus Christi Coastal Challenge

*Atlantic 10 Conference game | All times CT



GAMENOTES

SAINT LOUIS (8-4)

VANDERBILT (8-3)



WEDNESDAY, DEC. 31, 2014 • 1:00 P.M. • CHAIFETZ ARENA (10,600)

SAINT LOUIS BILLIKENS

Record: 8-4 (0-0 A-10)
HOME Record: 6-2
Last Game: W, 58-55 (Vermont)
Current Streak: W3
Last Five: 3-2
Head Coach: Jim Crews
Crews' Record at SLU: 63-18 (3rd yr.)
Crews' Career Record: 417-366 (27th yr.)
Leading Scorer: Austin McBroom (10.9 ppg)
Leading Rebounder: Ash Yacoubou (4.8 rpg)
Assists Leader: Davell Roby (24/2.2 apg)
Blocks Leader: John Manning (14/1.3 bpg)
Steals Leader: Austin McBroom (16/1.3 spg)
Next Game: Sat., Jan. 3 vs. Rhode Island

VANDERBILT COMMODORES

Record: 8-3 (0-0 SEC)
ROAD Record: 0-1
Last Game: W, 79-50 (Penn)
Current Streak: W1
Last Five: 3-2
Head Coach: Kevin Stallings
Stallings' Record at Vandy: 300-195 (16th yr.)
Stallings' Career Record: 423-258 (22nd yr.)
Leading Scorer: Damian Jones (16.5 ppg)
Leading Rebounder: Damian Jones (7.1 rpg)
Assists Leader: Baldwin IV/Mitchell (53/4.8 apg)
Blocks Leader: Damian Jones (19/1.7 bpg)
Steals Leader: Wade Baldwin IV (14/1.3 spg)
Next Game: Sat., Jan. 3 vs. Yale

NOTABLES

- ▶ Saint Louis has won three in a row and enters today's game with an 8-4 record. The Billikens are in the midst of a six-game homestand.
- ▶ The Billikens are 6-2 this season at Chaifetz Arena. They have posted a 52-8 mark at Chaifetz the last four years. In seven seasons overall, SLU is 93-22 on its home floor.
- ▶ SLU's next road game will be Jan. 6, 2015, at George Washington in Atlantic 10 Conference play.
- ▶ Saint Louis has advanced to the NCAA Tournament the last three years, a school record. Additionally, the Billikens are one of 10 programs in the nation that have advanced to the third round of the NCAA Tournament in each of the last three seasons.
- ▶ **Austin McBroom** leads the team in scoring with 10.9 ppg. He connects on 49 percent (25-for-51) of his 3-point attempts, which is fourth in the A-10.
- ▶ **Ash Yacoubou**, who has averaged 12.3 ppg over the last three games, averages a team-best 4.8 rpg and pumps in 9.3 ppg.
- ▶ **Milik Yarbrough** is the Bills' third-leading scorer with 8.0 ppg. He posted a double-double in the Billikens' victory against Vermont and is 12th in the A-10 in FG percentage (.528).
- ▶ **Mike Crawford**, who scored a career-high 19 points two games ago against UTPA, scores 6.3 ppg.
- ▶ Six of the Billikens' eight victories have come while holding the opposition to fewer than 60 points. The Billikens have won 65 games in a row when holding their opponents to 60 or fewer points.
- ▶ Saint Louis is sixth in the Atlantic 10 Conference in scoring defense with 61.6 points allowed per game.
- ▶ Billiken head coach **Jim Crews** is in his third season at the helm. The back-to-back A-10 Coach of the Year is 63-18 in three seasons at Saint Louis, 417-366 in 27 years overall.

POSSIBLE STARTERS (Based on starters from last game...)

#2

Austin
MCBROOM



McBroom's Season Averages

PPG	RPG	APG	MPG
10.9	1.7	1.8	26.8

#5

Davell
ROBY

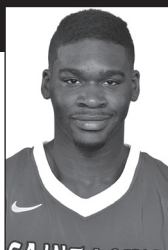


Roby's Season Averages

PPG	RPG	APG	MPG
3.1	2.6	2.2	18.9

#3

Ash
YACOUBOU



Yacoubou's Season Averages

PPG	RPG	APG	MPG
9.3	4.8	1.2	24.4

#4

Milik
YARBROUGH



Yarbrough's Season Averages

PPG	RPG	APG	MPG
8.0	4.7	1.6	19.0

#54

John
MANNING



Manning's Season Averages

PPG	RPG	BPG	MPG
3.3	2.7	1.3	16.4

BILLIKENS VS. COMMODORES

TEAM COMPARISON

SLU	VU
61.8.....Points per game.....	73.7
61.6.....Points allowed per game.....	61.0
+0.2.....Scoring Margin.....	+12.7
.415.....FG Percentage.....	.511
.443.....Opponent FG Percentage.....	.388
.339.....3FG Percentage.....	.393
.376.....Opponent 3FG Percentage.....	.292
.668.....Free Throw Percentage.....	.715
-3.2.....Rebounding Margin.....	+4.8
12.6.....Assists Per Game.....	16.6
13.4.....Turnovers Per Game.....	13.5
6.5.....Steals Per Game.....	4.6
2.7.....Blocks Per Game.....	4.8

SERIES HISTORY

► **Vanderbilt leads the all-time series 5-4**

Date	Location	SLU's Outcome
1925-26	St. Louis	W 35-22
1/1/27	St. Louis	L 21-40
12/31/29	St. Louis	W 46-16
12/20/69	Nashville	L 66-76
12/7/82	Nashville	L 67-88
3/28/90	New York City-NIT	L 72-74
12/31/96	Nashville	L 61-81
12/3/97	St. Louis	W 78-74
12/30/13	Nashville	W 57-49

LAST GAME BOX SCORE

Saint Louis 57, Vanderbilt 49

Dec. 30, 2013 :: Memorial Gym :: Nashville, Tenn.

Saint Louis 57 • 12-5

#	Player	Total		3-Ptr		Rebounds		PF	TP	A	TO	Blk	Stl	Min	
		FG-FGA	FG-FGA	FT-FTA	Off	Def	Tot								
21	EVANS, Dwayne	f	3-11	0-1	3-4	4	5	9	2	9	2	4	1	4	36
30	BARNETT, Jake	f	2-11	0-7	0-0	0	0	0	1	4	1	1	0	0	24
51	LOE, Rob	f	3-7	0-2	0-0	0	1	1	3	6	0	1	2	0	25
05	JETT, Jordair	g	6-8	0-0	5-6	0	4	4	1	17	8	3	0	2	34
11	MCCALL JR, Mike	g	3-7	1-4	2-4	0	4	4	0	9	0	1	0	2	32
01	GLAZE, Grandy	g	1-1	0-0	2-2	3	7	10	3	4	0	0	1	0	19
02	MCBROOM, Austin	g	2-6	2-5	0-0	0	0	0	0	6	0	1	0	0	13
35	AGBEKO, Reggie	g	1-1	0-0	0-2	1	0	1	1	2	0	0	0	1	8
54	MANNING, John	g	0-0	0-0	0-0	0	0	0	0	0	0	0	0	0	9
	Team					2	1	3							
	Totals		21-52	3-19	12-18	10	22	32	11	57	11	11	4	9	200

FG % 1st Half: 8-22 36.4% 2nd half: 13-30 43.3% Game: 21-52 40.4%
 3FG % 1st Half: 3-12 25.0% 2nd half: 0-7 0.0% Game: 3-19 15.8%
 FT % 1st Half: 2-2 100.0 2nd half: 10-16 62.5% Game: 12-18 66.7%

Vanderbilt 49 • 7-4

#	Player	Total		3-Ptr		Rebounds		PF	TP	A	TO	Blk	Stl	Min	
		FG-FGA	FG-FGA	FT-FTA	Off	Def	Tot								
00	ODOI, Rod	f	3-15	0-8	0-1	0	7	7	3	6	0	3	2	1	35
35	SIKAKAM, James	f	2-4	0-0	3-4	5	3	8	3	7	0	0	1	4	23
30	JONES, Damian	c	5-11	0-0	2-2	3	2	5	0	12	0	3	1	0	25
01	MCLELLAN, Eric	g	4-10	0-2	1-2	0	1	1	2	9	1	5	0	3	28
24	PARKER, Dai-Jon	g	1-3	1-2	0-0	1	2	3	3	3	0	2	1	0	23
03	KORNER, Luke	g	2-6	2-5	0-0	0	0	0	3	6	3	0	0	0	15
11	FULLER, Kyle	g	1-6	0-0	2-2	1	6	7	1	4	8	2	0	0	34
34	MOATS, Shelby	g	1-1	0-0	0-0	0	3	3	2	0	1	0	0	0	17
	Team					4	1	5							
	Totals		19-56	3-17	8-11	14	25	39	18	49	12	17	5	8	200

FG % 1st Half: 12-32 37.5% 2nd half: 7-24 29.2% Game: 19-56 33.9%
 3FG % 1st Half: 2-10 20.0% 2nd half: 1-7 14.3% Game: 3-17 17.6%
 FT % 1st Half: 1-3 33.3% 2nd half: 7-8 87.5% Game: 8-11 72.7%

Officials: Anthony Jordan, Lee Cassell, Don Daily
 Technical fouls: Saint Louis-None. Vanderbilt-None.
 Attendance: 9305

Score by periods	1st	2nd	Total
Saint Louis	21	36	57
Vanderbilt	27	22	49

Last FG - SLU 2nd-02:04, VU 2nd-00:12.
 Largest lead - SLU by 9 2nd-01:06, VU by 8 1st-02:04.

Score tied - 3 times.
 Lead changed - 6 times.

SETTING THE SCENE

Saint Louis, winners of three in a row, hosts Vanderbilt Wednesday on New Year's Eve. Game time from Chaifetz Arena is scheduled for 1 p.m.

FOLLOWING THE ACTION

Wednesday's game will be televised on FOX Sports Midwest. **Pat Parris** and Billiken great **Scott Highmark** will be on the call. The radio broadcast will air on 101 ESPN (101.1 FM). As always, Billiken Hall of Famer **Bob Ramsey** provides the play-by-play, while St. Louis American Sports Editor **Earl Austin Jr.** handles the analysis.

ADDITIONAL TV CLEARANCES

In addition to FOX Sports Midwest, Wednesday's game can be found on FOX Sports North and FOX College Sports Atlantic. It will also be streamed on FOX Sports Go for FOX College Sports subscribers.

RECAPPING THE VERMONT GAME

- Saint Louis freshman **Milik Yarbrough** posted his first-career double-double as the Billikens knocked off Vermont 58-55 Dec. 21 at Chaifetz Arena.
- Yarbrough scored 10 points and grabbed a career-high 13 rebounds for the double-double, the Billikens' second of the season. His 13 boards are the most by a SLU player this season. Yarbrough also dished out a career- and game-high six assists.
- **Ash Yacoubou** scored in double figures for the third straight game with 10 points. He also brought down seven rebounds and tied his career-best with three assists.
- **Austin McBroom** and **Mike Crawford** scored nine points apiece for SLU. **Austin Gillmann** was perfect from the field (3-for-3) en route to seven points. The 6-foot-10 center also registered two assists, including the assist on a key layin by Yarbrough in the second half.

BILLIKENS ON NEW YEAR'S EVE

- This marks the 18th time the Billikens have played on New Year's Eve in their history.
- Saint Louis is 10-7 all time on New Year's Eve. SLU last played on NYE in 2012, a 60-46 win against New Mexico.
- Oddly enough, this is the third meeting between Vanderbilt and Saint Louis on New Year's Eve. The two celebrated the New Year together in 1929 and again in 1996.

SPEED LIMIT 60

- Six of SLU's victories this year have come while holding the opposition to fewer than 60 points.
- The Billikens have won 66 games in a row when holding their opponents to 60 or fewer points.
- The last time the Billikens lost while giving up 60 or fewer points was Jan 29, 2011, a 52-46 defeat at George Washington.

THE BILLIKEN SIX

- As expected, the Billikens' six freshmen have played an integral role so far this season.
- The Billikens had five freshmen on the court at once for the first time against Wichita State. The SLU freshmen played well, helping SLU to a 12-3 run during a second-half stretch. In fact, they scored 35 straight points in the game and 25 of the Billikens' 27 points in the second half.
- Freshman forward **Milik Yarbrough** posted team-season-highs in rebounds (13) and assists (six) in helping the Billikens to a three-point victory against Vermont.
- In the win against North Carolina A&T, freshman guard **Miles Reynolds** took over in the second half and finished with a career-high 19 points in helping SLU to the win.
- At Indiana State, it was the Billiken freshmen who paved the way for the victory. With 11:46 remaining, the Billikens were trailing by one. The SLU freshmen would go on to score the next 21 Billiken points to give SLU a double-digit lead.
- A freshman has led the Billikens in scoring in four games this season – Reynolds (North Carolina A&T and Rockhurst), **Marcus Bartley** (Wichita State) and **Milik Yarbrough** (South Dakota State).

MCBROOM GOES THE DYNAMITE

- Junior guard **Austin McBroom** has hit big shots for the Billikens thus far.
- McBroom, who scored a career-high 26 points against Bradley, hit the game-winning 3-pointer against the Braves with seven seconds remaining.
- It was McBroom's 3-pointer with less than three minutes remaining against North Carolina A&T that completed a comeback and put the Billikens ahead for good.
- Against Southern Illinois in the season opener, McBroom posted 24 points thanks in

part to five treys. His biggest shot of the night came with 10 seconds remaining when he buried the go-ahead three.

▶ Last season, McBroom hit a big shot late in a game at Duquesne. With the Billikens trailing by one with less than a minute left, he buried a three from the right side to give SLU the lead for good.

▶ SLU's leading returning scorer from a year ago (7.3 ppg), McBroom leads the Billikens with 10.9 ppg. He is fourth in the A-10 in 3-point field-goal percentage (.490).

ASH ON THE BOARDS

▶ Junior guard **Ash Yacoubou** has started the first 12 games for the Billikens.

▶ The Villanova transfer, whom SLU head coach **Jim Crews** lauded for his work ethic and attitude during his redshirt season a year ago, has led the Billikens on the boards in seven games.

▶ Yacoubou, who scored a career-high 17 points against UTPA, has also led the team in scoring twice. For the year, he is second in scoring with 9.3 ppg and first on the squad with 4.8 rpg.

▶ Yacoubou posted his first career double-double against Rockhurst with 11 points and 10 rebounds.

▶ The last SLU guard to lead the Billikens in rebounding was **Tommie Liddell III** in 2008-09.

YARBROUGH EFFICIENT FROM THE FIELD

▶ Freshman forward **Milik Yarbrough** leads the Billikens and is 12th in the A-10 in field-goal percentage (52.8 percent).

CRAWFORD'S TIME TO SHINE

▶ Sophomore guard **Mike Crawford** has put together the best back-to-back games of his career in SLU's last two outings.

▶ Crawford followed up his career-high 19-point performance against UTPA with a solid nine-point effort against Vermont. Over the last two games, he has averaged 14 ppg and hit seven of his 13 shots (53.8 percent).

MR. CONSISTENCY

▶ Freshman center **Austin Gillmann** has given the Billikens consistent play over the last six games.

▶ He has recorded three field goals in each of the six games over that stretch. Additionally, the big man has dished out two assists in each of the last four games. Gillmann has hit five 3s during that stretch as well.

▶ In the six games combined, he has averaged 16.7 minutes, 7.3 ppg and has shot an impressive 62.1 percent (18-of-29) from the field.

BLOCK PARTY

▶ Senior center **John Manning** leads the Billikens and is 10th in the A-10 with 1.3 blocks per game.

▶ Manning tied his career high with four blocks against SIUE.

▶ Manning has 62 blocks for his career. He needs 14 more to crack the Billikens' top 10 all-time.

STARTING LINEUP SHUFFLING

▶ The Billikens have used five different starting lineups so far this season.

▶ Only two Billikens – **Mike Crawford** and **Miles Reynolds** – have yet to receive a starting assignment.

THE MOST SINCE...

▶ Freshman forward **Milik Yarbrough** posted the first double-double by a Billiken freshman since **Dwayne Evans** in 2010-11. Evans had five double-doubles in his rookie campaign.

▶ Freshman guard **Miles Reynolds'** 19 points against North Carolina A&T are the most by a Billiken freshman since **Mike McCall Jr.** scored 19 against Southern Mississippi on Dec. 23, 2010.

▶ Junior guard **Austin McBroom's** six 3-pointers against Bradley are the most by a Billiken since **Kwamain Mitchell** buried seven against Rhode Island on Jan. 19, 2012.

▶ McBroom's 26 points against Bradley are the most by a Billiken in a nonconference game since Mitchell had 33 points against UMKC on Dec. 22, 2009.

QUICK FACTS

General Information

School Name Saint Louis University
 City/ZIP St. Louis, MO 63103
 Founded 1818
 Enrollment 13,505
 Nickname Billikens
 Colors Royal Blue and White
 NCAA Affiliation NCAA Division I
 Conference Atlantic 10 Conference
 President Dr. Fred Pestello
 Director of Athletics Chris May
 Faculty Athletics Representative Dr. Michael Ross
 Facility Chaifetz Arena (10,600)
 Press Row Phone (314) 977-5212
 Athletic Dept. Phone (314) 977-3177
 Ticket Office Phone (314) 977-4SLU

2014-15 Staff

Head Coach Jim Crews
 Alma Mater, Year Indiana, 1976
 Record at School 63-18 (three years)
 Career Record 417-366 (27 years)
 Assistant Coach Tanner Bronson
 Alma Mater, Year Wisconsin, 2008
 Season at SLU Fourth (Third as Asst. Coach)
 Assistant Coach Calbert Cheaney
 Alma Mater, Year Indiana, 1993
 Season at SLU Second
 Assistant Coach Jim Platt
 Alma Mater, Year Concordia, 1973
 Season at SLU Third
 Director of Basketball Operations Charles Nishida
 Alma Mater, Year Saint Louis, 2014
 Season at SLU First

2013-14 Season at a Glance

Overall Record 27-7
 Home 14-3
 Away 11-1
 Neutral 2-3
 Conference Record (Finish) 13-3 (First)
 Postseason NCAA Tournament Third Round
 Final Ranking (Poll) No. 25 (AP) | No. 25 (USA Today)

2014-15 Outlook

Scholarship Players Returning/Lost 7/5
 Starters Returning/Lost 0/5
 Newcomers 6

Billiken Media Relations

Assistant AD (MBB Contact) Brian Kunderman
 Email bkunderm@slu.edu
 Office 314-977-3346
 Cell 314-808-4868
 Assistant SID Mickey Smith
 Email msmit145@slu.edu
 Office 314-977-3463
 Associate (MBB Credentials) Jake Gossage
 Email jgossage@slu.edu
 Office 314-977-2524
 Website SLUBillikens.com
 Twitter @SLU_Billikens | @SaintLouisMBB

AP TOP 25 (Dec. 29)

1	Kentucky (65)	13-0	1,625
2	Duke	10-0	1,559
3	Virginia	11-0	1,457
4	Wisconsin	12-1	1,395
5	Louisville	11-1	1,327
6	Villanova	12-0	1,316
7	Gonzaga	12-1	1,249
8	Arizona	12-1	1,243
9	Iowa State	9-1	1,005
10	Utah	9-2	956
11	Texas	10-2	903
12	Maryland	12-1	869
13	Kansas	9-2	775
14	Notre Dame	12-1	709
15	St. John's	11-1	690
16	Wichita St	10-2	630
17	West Virginia	11-1	584
18	Oklahoma	8-3	530
19	North Carolina	9-3	483
20	Ohio State	11-2	435
21	Washington	11-1	253
22	Baylor	10-1	238
23	Northern Iowa	11-1	216
24	Colorado St	13-0	194
25	Georgetown	8-3	140

Others receiving votes: TCU 132, **Virginia Commonwealth 101**, San Diego St 40, Arkansas 27, LSU 7, **George Washington 7**, Old Dominion 7, Penn State 5, UNLV 5, Indiana 4, Minnesota 2, Florida 2, Stanford 2, California 1, Army 1, **Davidson 1**

USA Today Coaches Poll (Dec. 29)

1	Kentucky (30)	13-0	774
2	Duke (1)	10-0	744
3	Virginia	11-0	698
4	Wisconsin	12-1	663
5	Villanova	12-0	646
6	Louisville	11-1	614
7	Arizona	12-1	600
8	Gonzaga	12-1	587
9	Iowa State	9-1	484
10	Texas	10-2	428
11	Maryland	12-1	416
12	Utah	9-2	400
13	Notre Dame	12-1	371
14	Kansas	9-2	353
15	West Virginia	11-1	330
16	Wichita St	10-2	292
17	St. John's	11-1	272
18	Ohio State	11-2	237
19	Washington	11-1	189
20	North Carolina	9-3	186
21	Oklahoma	8-3	163
22	Baylor	10-1	144
23	Northern Iowa	11-1	112
24	Colorado St	13-0	94
25	San Diego St	10-3	66

Others receiving votes: **Virginia Commonwealth 44**, Georgetown 42, TCU 31, California 15, Arkansas 14, Seton Hall 12, Minnesota 12, Old Dominion 8, **George Washington 7**, Oklahoma St 6, LSU 6, Indiana 4, Connecticut 3, Illinois 3, Stanford 2, Georgia 2, Penn State 1

GETTING DEFENSIVE

- ▶ The Billikens are sixth in the A-10 in scoring defense, allowing 61.8 ppg.
- ▶ Here is a look at the **points allowed per game** by the Billikens the last five years, and the final NCAA ranking:
 - 2013-14 | 61.9 ppg | 19th in NCAA
 - 2012-13 | 58.2 ppg | 16th in NCAA
 - 2011-12 | 57.6 ppg | 8th in NCAA
 - 2010-11 | 62.4 ppg | 35th in NCAA
 - 2009-10 | 60.2 ppg | 17th in NCAA

SCORING DISTRIBUTION BY CLASS

- ▶ Here is a look at the Billikens' scoring distribution, by class:
 - FRESHMEN (6) | 317 points | 43% of scoring
 - SOPHOMORES (3) | 145 points | 20% of scoring
 - JUNIORS (2) | 243 points | 33% of scoring
 - SENIORS (1) | 36 points | 4% of scoring
- ▶ One interesting storyline to follow this year will be how this year's freshman class scoring distribution compares to that of last year's seniors. In 2010-11, the Billiken freshman class of **Dwayne Evans, Jordair Jett, Mike McCall Jr.** and **Rob Loe** accounted for 52 percent of the team's scoring.

HOME SWEET CHAIFETZ

- ▶ The Billikens are in their seventh season at Chaifetz Arena. SLU has an all-time record of 93-22 on its home floor.
- ▶ SLU is 52-8 the last four seasons in the 10,600-seat arena, including a 14-3 mark last season.

BILLIKENS TO CELEBRATE ANNIVERSARY SEASON

- ▶ This season marks the 100th anniversary of Billiken Basketball, and the 99th season. The Billikens did not compete in 1943-44 due to World War II.
- ▶ There will be several special events and promotions this season to celebrate the 100th anniversary of Billiken Basketball, including an All-Century Team unveiling later this year. Fans are currently voting for their favorite players via online balloting.
- ▶ The Billikens' first game ever recorded was Jan. 14, 1915, against Company E. The Billikens play Duquesne exactly 100 years later on Jan. 14, 2015, at Chaifetz Arena.

CHAMPIONSHIP RUN

- ▶ Saint Louis has captured three of the last four Atlantic 10 Conference "championships."
- ▶ In 2012-13, the Billikens claimed the A-10 regular-season title before winning the A-10 Championship tournament, the first one held at the Barclays Center.
- ▶ Last season, SLU won a dramatic game at UMass in the regular-season finale to secure the outright A-10 regular-season title for the second year in a row.
- ▶ The Billikens' bid to "four-peat" fell short, however, with a last-second loss to St. Bonaventure in the quarterfinals of the A-10 Championship.

NCAA TOURNAMENT HISTORY

- ▶ The Billikens have advanced to the NCAA Tournament for three straight seasons, a school record.
- ▶ Last season, SLU was a No. 5 seed in Orlando and offered one of the highlights of March Madness, rallying from 16 points down with eight minutes to play in an overtime victory against North Carolina State. The run ended two days later when SLU was knocked off by Louisville.
- ▶ In 2012-13, Saint Louis was sent to San Jose, Calif., as a No. 4 seed and defeated New Mexico State in the second round before falling to Oregon in the third round.
- ▶ The 2011-12 season, the final campaign of legendary head coach **Rick Majerus'** career, marked the first NCAA Tournament appearance for the Billikens since 2000. A No. 9 seed, SLU knocked off Memphis before battling top-seeded Michigan State to the wire.

NCAA TOURNAMENT WINNERS

- ▶ Saint Louis is one of 10 programs in the nation that have advanced to the third round of the NCAA Tournament in each of the last three years. The others are Creighton, Florida, Gonzaga, Iowa State, Kansas, Louisville, Michigan State, North Carolina and Syracuse

WINNING WAYS

- ▶ The Billikens' run over the last three years is deeply entrenched in SLU's record book.
- ▶ SLU's 28 victories in 2012-13 are a school record. Last year's win total (27) is tied with the 1988-89 squad for second most all-time.

BILLIKENS SIGN TWO IN EARLY SIGNING PERIOD

- ▶ SLU announced on Nov. 12 that **Matt Neufeld** and **Elliott Welmer** have signed National Letters of Intent to attend the University and play for the Billikens.
- ▶ Neufeld is a 6-foot-11 post player from Victoria, Canada. Welmer is a 6-9 forward from Columbus, Ind.
- ▶ Coach Crews on Neufeld: "Matt is an athletic five-man who is extremely versatile. He can play inside and out and is a good passer. He is an honor roll student and a high-character kid. He is having a great experience at Sunrise Christian Academy, which is going to be terrific for his development."
- ▶ Coach Crews on Welmer: "Elliott comes from a very good high school background at Columbus North in Indiana. He has length with great touch, ball-handling skills and passing ability. Like Matt, he has high character and will benefit from a year of prep school at Bridgton Academy."

ALL-TIME WINNINGEST CLASS

- ▶ Saint Louis' five seniors from last year (**Jake Barnett, Dwayne Evans, Jordair Jett, Rob Loe** and **Mike McCall Jr.**) accumulated 93 wins during their careers, making them the winningest class in school history.
- ▶ SLU's current seniors, **Grandy Glaze** and **John Manning**, have 89 wins in their four seasons.

RECAPPING LAST SEASON

- ▶ The Billikens finished 27-7 and captured the A-10 regular-season title with a 13-3 league mark. SLU advanced to the third round of the NCAA Tournament.
- ▶ **Dwayne Evans**, a first-team All-Conference choice, led the Billikens in scoring (14 ppg) and rebounding (6.5 rpg).
- ▶ **Jordair Jett** was named A-10 Player of the Year and was an honorable mention All-America choice by the AP.
- ▶ SLU was ranked in the national polls for 11 straight weeks, a school record. The Billikens' highest ranking came the week of Feb. 24 – No. 8 in the coaches' poll and No. 10 in the AP Top 25.

CREWS IN THIRD YEAR

- ▶ Back-to-back A-10 Coach of the Year **Jim Crews** is in his third season as the Billikens' head coach.
- ▶ He is 63-18 in three years at Saint Louis, 417-366 in 27 years overall.
- ▶ Crews was tabbed the 2012-13 UPS NABC Division I Coach of the Year, Sporting News' National Coach of the Year and the A-10 Coach of the Year. He was a finalist for the Naismith Coach of the Year award.
- ▶ He has been a part of 16 NCAA Tournaments as a player, assistant coach and head coach. Crews played on Indiana's 1976 national championship team and also won a title as an assistant coach in 1981.

SCOUTING VANDERBILT

- ▶ Vanderbilt University, located in Nashville, Tenn., has won three of its last four and enters today's game with an 8-3 overall record.
- ▶ The Commodores are coming off a 79-50 victory against Penn on Dec. 22. It was the 300th win at Vandy for head coach **Kevin Stallings**.
- ▶ **Damian Jones** leads three players in double figures with 16.5 ppg. He also brings down a team-best 7.1 rpg.
- ▶ **Riley LaChance** has buried a team-best 22 treys and scores 12.5 ppg. He plays a team-high 32.2 minutes per contest.
- ▶ **James Siakam** scores 10.4 ppg and averages 5.3 rpg off the bench for the Commodores.
- ▶ **Wade Baldwin IV** and **Shelton Mitchell** lead Vanderbilt with 53 assists apiece. Baldwin IV has registered a team-leading 14 steals.
- ▶ The Commodores are averaging 73.7 ppg. They are among the nation's top shooting teams with a field-goal percentage of .511. Vandy shoots 39.3 percent from 3-point range and 71.5 percent from the line.
- ▶ Like the Billikens, Vanderbilt plays several freshmen. In fact, Vanderbilt is the only school in the SEC to start freshmen at all three guard spots.
- ▶ Head coach **Kevin Stallings**, a Collinsville, Ill., native, is in his 16th season at Vanderbilt with a 300-195 record. He is the school's all-time winningest coach. Counting his six-year stint at Illinois State, he has a 22-year career mark of 423-258.

SERIES HISTORY

- ▶ Vanderbilt leads the all-time series 5-4, but the Billikens have won the last two in the series. Last season at Memorial Gym in Nashville, the Billikens defeated Vanderbilt 57-49.

Atlantic 10 Conference



STANDINGS (Through Sunday's Games)

	A-10	Overall
Davidson	0 - 0	9 - 1
Dayton	0 - 0	9 - 2
VCU	0 - 0	10 - 3
George Washington	0 - 0	9 - 3
Rhode Island	0 - 0	7 - 3
St. Bonaventure	0 - 0	7 - 3
Saint Louis	0 - 0	8 - 4
La Salle	0 - 0	7 - 5
Richmond	0 - 0	7 - 5
Saint Joseph's	0 - 0	6 - 5
Massachusetts	0 - 0	6 - 6
George Mason	0 - 0	5 - 6
Duquesne	0 - 0	4 - 6
Fordham	0 - 0	4 - 6

UPCOMING GAMES

All times Central

Monday, December 29

- Cleveland State at VCU | 6 p.m.
- Saint Joseph's at Denver | 8 p.m.

Tuesday, December 30

- Davidson at Virginia | 5 p.m.
- UT-Pan American at Duquesne | 6 p.m.
- VMI at George Washington | 6 p.m.
- Penn at La Salle | 6 p.m.
- Iona at Massachusetts | 6 p.m.
- St. Bonaventure at Delaware | 6 p.m.
- Mississippi at Dayton | 7 p.m.

Wednesday, December 31

- South Carolina State at Fordham | 11 a.m.
- Vanderbilt at Saint Louis | 1 p.m.
- Brown at Rhode Island | 3 p.m.
- Northeastern at Richmond | 3 p.m.
- George Mason at Oklahoma | 4 p.m.

Saturday, January 3

- Duquesne at Dayton* | Noon
- George Washington at Saint Joseph's* | 1 p.m.
- Rhode Island at Saint Louis* | 2 p.m.
- St. Bonaventure at Massachusetts* | 3 p.m.
- Richmond at Davidson* | 4 p.m.
- La Salle at George Mason* | 6 p.m.

Sunday, January 4

- VCU at Fordham* | Noon

Tuesday, January 6

- Saint Louis at George Washington* | 6 p.m.

2014-15 INDIVIDUAL GAME HIGHS

Points

SLU: 26, Austin McBroom vs. Bradley
 OPP: 26, Janari Joesaar, UTPA

FGs Made

SLU: 9, Austin McBroom vs. Bradley
 OPP: 8, five times

FGs Attempted

SLU: 14, three times
 OPP: 16, Justin Gant, Indiana State

3FGs Made

SLU: 6, Austin McBroom vs. Bradley
 OPP: 4, twice

3FGs Attempted

SLU: 9, Austin McBroom vs. Bradley
 OPP: 8, Omari Grier, Bradley

FTs Made

SLU: 14, Miles Reynolds vs. North Carolina A&T
 OPP: 10, Janari Joesaar, UTPA

FTs Attempted

SLU: 18, Miles Reynolds vs. North Carolina A&T
 OPP: 11, Janari Joesaar, UTPA

Rebounds

SLU: 13, Milik Yarbrough vs. Vermont
 OPP: 12, Sean O'Brien, Southern Illinois

Assists

SLU: 6, Milik Yarbrough vs. Vermont
 OPP: 6, Deondre Parks, South Dakota State

Blocks

SLU: 4, John Manning vs. SIUE
 OPP: 6, Jake Kitchell, Indiana State

Steals

SLU: 4, Marcus Bartley at Wichita State
 OPP: 5, Austin Williams, North Carolina A&T

SLU TEAM HIGHS/LOWS

Points

High: 80 vs. Rockhurst
 Low: 50 vs. Mississippi State

FGs Made

High: 26 vs. Rockhurst
 Low: 13 vs. North Carolina A&T

3FGs Made

High: 8 vs. Southern Illinois
 Low: 2 vs. South Dakota State

FTs Made

High: 26 vs. North Carolina A&T
 Low: 5 vs. Mississippi State

Rebounds

High: 47 at Indiana State
 Low: 20 at Wichita State

Assists

High: 18, twice
 Low: 4 vs. Mississippi State

Blocks

High: 6 vs. SIUE
 Low: 1, several times

Steals

High: 11 vs. South Dakota State
 Low: 4 vs. Southern Illinois/Indiana State

GAME-BY-GAME STARTING LINEUP

GAME	G	G	G	F	F/C
Southern Illinois	McBroom	Yacoubou	Roby	Lancona	Manning
at Indiana State	McBroom	Yacoubou	Roby	Lancona	Manning
Texas A&M-CC	McBroom	Yacoubou	Roby	Agbeko	Manning
North Carolina A&T	McBroom	Yacoubou	Roby	Agbeko	Gillmann
vs. Mississippi State	McBroom	Yacoubou	Roby	Lancona	Manning
vs. Bradley	McBroom	Yacoubou	Bartley	Agbeko	Jolly
Rockhurst	McBroom	Yacoubou	Bartley	Agbeko	Jolly
at Wichita State	McBroom	Yacoubou	Roby	Agbeko	Manning
South Dakota State	McBroom	Yacoubou	Roby	Agbeko	Manning
SIUE	McBroom	Yacoubou	Roby	Yarbrough	Manning
Texas-Pan American	McBroom	Yacoubou	Roby	Yarbrough	Manning
Vermont	McBroom	Yacoubou	Roby	Yarbrough	Manning
Vanderbilt					
Rhode Island					
at George Washington					
at Davidson					
Duquesne					
at Dayton					
VCU					
at George Mason					
Massachusetts					
Saint Joseph's					
at Fordham					
Dayton					
at Rhode Island					
at VCU					
La Salle					
at Duquesne					
George Mason					
St. Bonaventure					
at Richmond					

MISCELLANEOUS PLAYER STATS

STAT	11-12	12-13	13-14	14-15	CAREER
Double-Doubles					
Grandy Glaze	-	-	1	-	1
Ash Yacoubou	-	-	-	1	1
Milik Yarbrough	-	-	-	1	1
Double-Digit Points					
Austin McBroom	-	-	10	6	16
Ash Yacoubou	-	-	-	7	7
Grandy Glaze	-	1	4	-	5
Milik Yarbrough	-	-	-	5	5
Miles Reynolds	-	-	-	2	2
Marcus Bartley	-	-	-	2	2
Mike Crawford	-	-	-	2	2
Tanner Lancona	-	-	1	-	1
Brett Jolly	-	-	-	1	1
Davell Roby	-	-	-	1	1
Double-Digit Rebounds					
Grandy Glaze	-	1	5	-	6
Ash Yacoubou	-	-	-	1	1
Milik Yarbrough	-	-	-	1	1
Led team in Scoring					
Austin McBroom	-	-	-	4	4
Ash Yacoubou	-	-	-	2	2
Miles Reynolds	-	-	-	2	2
Mike Crawford	-	-	-	1	1
Marcus Bartley	-	-	-	1	1
Grandy Glaze	-	-	1	-	1
Milik Yarbrough	-	-	-	1	1

SPECIALTY STATS

	Points in Paint	Points Off TO	2nd Chance	Fast Break	Bench	SLU's Largest Lead	SLU's Largest Deficit	Times Tied	Lead Changes	Margins Half	Margins Final
Southern Illinois	14/22	8/20	15/8	5/10	20/13	3 (1st, 15:33/final)	6 (1st, 11:29)	4	7	-4	+3
at Indiana State	24/28	9/13	8/8	2/0	46/8	16 (2nd, 1:12)	12 (1st, 6:49)	4	5	+1	+13
Texas A&M-CC	26/28	17/14	8/11	4/4	24/21	9 (2nd, 15:53)	9 (1st, 12:03)	3	4	+3	-6
North Carolina A&T	14/26	24/16	6/9	9/4	34/16	8 (1st, 8:12)	10 (2nd, 10:32)	5	5	-1	+3
vs. Mississippi State	24/24	13/8	6/6	0/17	25/14	None	29 (2nd, 1:06)	0	0	-10	-25
vs. Bradley	28/12	18/19	7/11	2/0	14/21	4 (2nd, 7:32)	10 (1st, 1:07)	7	3	-7	+3
Rockhurst	30/18	15/14	8/13	6/4	54/24	32 (2nd, 00:49)	3 (1st, 15:04)	1	2	+12	+32
at Wichita State	10/32	16/18	2/13	0/9	41/29	None	34 (2nd, 13:04)	0	0	-20	-29
South Dakota State	28/26	16/16	18/12	2/4	35/19	7 (2nd, 16:50)	9 (1st, 8:19)	4	13	-1	-6
SIUE	34/34	17/17	6/11	4/4	29/15	9 (2nd, 15:44)	1 (1st, 14:31)	3	2	+3	+6
Texas-Pan American	24/14	19/2	7/13	2/2	30/4	13 (1st, 12:10)	3 (1st, 19:11)	1	1	+10	+6
Vermont	30/28	9/7	7/2	4/6	22/24	12 (2nd, 00:49)	3 (1st, 5:32)	0	9	+1	+3
Vanderbilt											
Rhode Island											
at George Washington											
at Davidson											
Duquesne											
at Dayton											
VCU											
at George Mason											
Massachusetts											
Saint Joseph's											
at Fordham											
Dayton											
at Rhode Island											
at VCU											
La Salle											
at Duquesne											
George Mason											
St. Bonaventure											
at Richmond											

Stats listed as SLU/Opponent

NUMERICAL ROSTER

NO.	NAME	POS.	HT.	WT.	YR.	HOMETOWN (PREVIOUS SCHOOL)
0	Marcus Bartley	G	6-4	170	Fr.	Decatur, Ill. (MacArthur)
1	Grandy Glaze	F	6-6	235	Sr.	Toronto, Ontario (Notre Dame Prep)
2	Austin McBroom	G	5-9	165	Jr.	Los Angeles, Calif. (Central Michigan)
3	Ash Yacoubou	G	6-4	210	Jr.	Bronx, N.Y. (Villanova)
4	Milik Yarbrough	F	6-6	230	Fr.	Zion, Ill. (Zion-Benton Township)
5	Davell Roby	G	6-4	200	Fr.	Memphis, Tenn. (White Station)
11	Miles Reynolds	G	6-2	170	Fr.	Chicago, Ill. (Whitney Young)
12	Stephen Leazer	G	6-4	180	Fr.	Mt. Prospect, Ill. (Northridge Prep)
14	Brett Jolly	F	6-9	230	Fr.	Southlake, Texas (Blair Academy [N.J.])
15	Tanner Lancona	F	6-8	230	So.	Trabuco Canyon, Calif. (Tesoro)
21	Grant Hollander	G	6-3	175	Fr.	St. Charles, Mo. (Chaminade)
24	Aaron Hines	G	6-0	175	So.	St. Louis, Mo. (Parkway North)
25	Austin Gillmann	C	6-10	210	Fr.	St. Louis, Mo. (Oakville)
32	Mike Crawford	G	6-4	200	So.	Tipton, Ind. (Tipton)
33	Royce Simpson	G	6-2	180	So.	Chicago, Ill. (Marist)
35	Reggie Agbeko	F	6-7	240	So.	Buffalo, N.Y. (South Kent School)
54	John Manning	C	6-11	250	Sr.	Chantilly, Va. (Chantilly)

ALPHABETICAL ROSTER

NO.	NAME	POS.	HT.	WT.	YR.	HOMETOWN (PREVIOUS SCHOOL)
35	Reggie Agbeko	F	6-7	240	So.	Buffalo, N.Y. (South Kent School)
0	Marcus Bartley	G	6-4	170	Fr.	Decatur, Ill. (MacArthur)
32	Mike Crawford	G	6-4	200	So.	Tipton, Ind. (Tipton)
25	Austin Gillmann	C	6-10	210	Fr.	St. Louis, Mo. (Oakville)
1	Grandy Glaze	F	6-6	235	Sr.	Toronto, Ontario (Notre Dame Prep)
24	Aaron Hines	G	6-0	175	So.	St. Louis, Mo. (Parkway North)
21	Grant Hollander	G	6-3	175	Fr.	St. Charles, Mo. (Chaminade)
14	Brett Jolly	F	6-9	230	Fr.	Southlake, Texas (Blair Academy [N.J.])
15	Tanner Lancona	F	6-8	230	So.	Trabuco Canyon, Calif. (Tesoro)
12	Stephen Leazer	G	6-4	180	Fr.	Mt. Prospect, Ill. (Northridge Prep)
54	John Manning	C	6-11	250	Sr.	Chantilly, Va. (Chantilly)
2	Austin McBroom	G	5-9	165	Jr.	Los Angeles, Calif. (Central Michigan)
11	Miles Reynolds	G	6-2	170	Fr.	Chicago, Ill. (Whitney Young)
5	Davell Roby	G	6-4	200	Fr.	Memphis, Tenn. (White Station)
33	Royce Simpson	G	6-2	180	So.	Chicago, Ill. (Marist)
3	Achraf Yacoubou	G	6-4	210	Jr.	Bronx, N.Y. (Villanova)
4	Milik Yarbrough	F	6-6	230	Fr.	Zion, Ill. (Zion-Benton Township)

SAINT LOUIS STAFF

Head Coach: Jim Crews

Assistant Coach: Tanner Bronson

Assistant Coach: Calbert Cheaney

Assistant Coach: Jim Platt

Player Development Coordinator: Danny Brown

Video Coordinator: Marcus Wilson

Director of Basketball Operations: Charles Nishida

PRONUNCATIONS

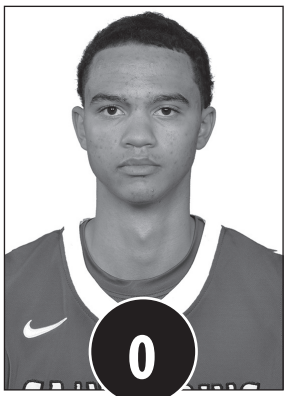
Ash Yacoubou • Yuh-coo-boo

Tanner Lancona • Lan-CONE-uh

Reggie Agbeko • AG-beck-oh

Scan the QR Code below to access the Billikens' roster with complete bios.





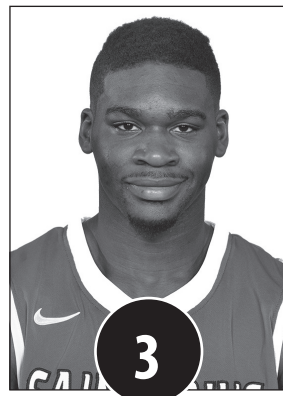
Marcus Bartley
Fr. • G • 6-4 • 170



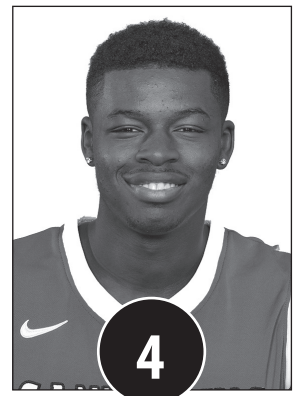
Grandy Glaze
Sr. • F • 6-6 • 235



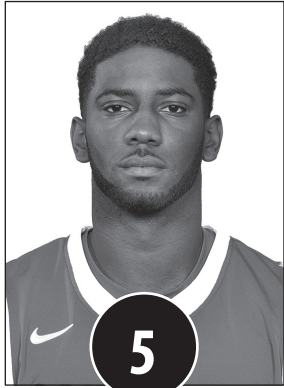
Austin McBroom
Jr. • G • 5-9 • 165



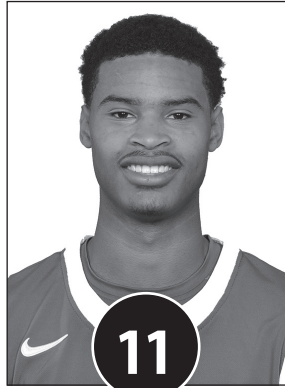
Ash Yacoubou
Jr. • G • 6-4 • 210



Milik Yarbrough
Fr. • F • 6-6 • 230



Davell Roby
Fr. • G • 6-4 • 200



Miles Reynolds
Fr. • G • 6-2 • 170



Stephen Leazer
Fr. • G • 6-4 • 180



Brett Jolly
Fr. • F • 6-9 • 230



Tanner Lancona
So. • F • 6-8 • 230



Grant Hollander
Fr. • G • 6-3 • 175



Aaron Hines
So. • G • 6-0 • 175



Austin Gillmann
Fr. • C • 6-10 • 210



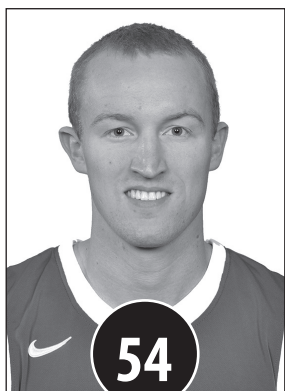
Mike Crawford
So. • G • 6-4 • 200



Royce Simpson
So. • G • 6-2 • 180



Reggie Agbeko
So. • F • 6-7 • 240



John Manning
Sr. • C • 6-11 • 250



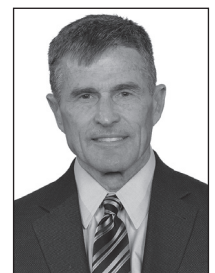
Jim Crews
Head Coach



Tanner Bronson
Asst. Coach

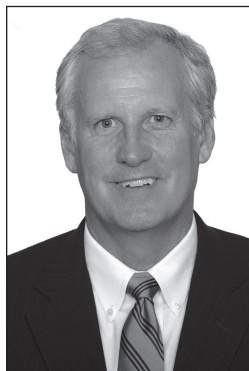


Calbert Cheaney
Asst. Coach



Jim Platt
Asst. Coach

HeadCoach **JIM CREWS**



Jim Crews was introduced as the Billikens' 26th head men's basketball coach on April 12, 2013. He has piloted the Billikens to unprecedented success the last two seasons, which have culminated in national rankings and appearances in the NCAA Tournament. Crews is **417-366** in 27 years as a head coach, **63-18** in three years at SLU.

Crews was named interim head coach at the beginning of the 2012-13 campaign when it was announced that Rick Majerus would not coach. Crews went on to lead the Billikens to a school-record 28 victories (28-7), Atlantic 10 Conference regular-season and tournament championships and a second straight NCAA Tournament bid.

That success carried over to the 2013-14 season, when the Billikens (27-7) manufactured a 19-game winning streak, captured the A-10 regular-season title and advanced to their school-record third straight NCAA Tournament.

Crews has been a part of the Billiken program for the last three years, including the 2011-12 campaign as an assistant coach under Majerus. It has arguably been the best three-year stretch in Billiken history. SLU has advanced to the NCAA Tournament in each of the last three years, a school record. In addition, the Billikens have been nationally ranked at some point during all three seasons, including a top 10 ranking in 2013-14. SLU has three A-10 titles (2012-13 regular-season and tournament, 2013-14 regular-season) to its credit, as well.

In 2013-14, the Billikens graduated their all-time winningest class. The class of Jake Barnett, Dwayne Evans, Jordair Jett, Rob Loe and Mike McCall Jr. accumulated 93 victories during their four-year careers.

Under Crews' tutelage, several Billiken student-athletes have made a name for themselves on the national stage. Jett was named the A-10 Player of the Year in 2013-14, becoming the first Billiken to earn the honor since 1980. Dwayne Evans earned first-team All-Conference plaudits for two straight seasons, something not done at SLU since 1994.

Crews' coaching performance, as well as the Billikens' success on the court, has not gone unnoticed on the national scene. He has been named the A-10 Coach of the Year the last two seasons. Additionally, in 2012-13, Crews earned national coach of the year awards from the Sporting News and the National Association of Basketball Coaches (NABC). He was one of four finalists for the Naismith Coach of the Year award.

Prior to arriving at SLU just before the start of the 2011-12 season, he served seven seasons at Army from 2002-09. Preceding his appointment at West Point, Crews coached for 17 years at Evansville (1985-2002) and played and coached at Indiana.

Crews had a successful 17-year stint at Evansville from 1985-2002, accumulating a 294-209 record. He guided the Purple Aces to six postseason appearances, including four trips to the NCAA Tournament. All six of those squads registered at least 21 victories. A four-time conference coach of the year (1987, 1989, 1992 Midwestern Collegiate; 1999 Missouri Valley), Crews is the only coach in the tradition-rich history of Evansville to post nine consecutive non-losing seasons.

Crews learned from the legendary Bob Knight at Indiana for 12 seasons, four as a player and eight as an assistant coach.

During his four-year playing career from 1972 to 1976, the Hoosiers forged a remarkable 108-12 record. As a senior in 1976, Crews helped IU to a 32-0 record and a national championship, the last time a Division I men's program has posted an undefeated record.

After graduating from Indiana, Crews returned for an eight-year stint on Knight's coaching staff. Indiana captured another national championship in 1981, won three Big Ten championships (1980, 1981 and 1983) and posted a 174-76 record during his tenure as an assistant.

Crews, a native of Normal, Ill., has a wife, Kim, and two children, a daughter Abby and a son Todd.

CREWS' YEAR-BY-YEAR

Year	School	Overall	Postseason
Head Coach			
1985-86	Evansville	8-19	--
1986-87	Evansville	16-12	--
1987-88	Evansville	21-8	NIT
1988-89	Evansville	25-6	NCAA Tournament
1989-90	Evansville	17-15	--
1990-91	Evansville	14-14	--
1991-92	Evansville	24-6	NCAA Tournament
1992-93	Evansville	23-7	NCAA Tournament
1993-94	Evansville	21-11	NIT
1994-95	Evansville	18-9	--
1995-96	Evansville	13-14	--
1996-97	Evansville	17-14	--
1997-98	Evansville	15-15	--
1998-99	Evansville	23-10	NCAA Tournament
1999-00	Evansville	18-12	--
2000-01	Evansville	14-16	--
2001-02	Evansville	7-21	--
2002-03	Army	5-22	--
2003-04	Army	6-21	--
2004-05	Army	4-23	--
2005-06	Army	5-22	--
2006-07	Army	15-16	--
2007-08	Army	14-16	--
2008-09	Army	11-19	--
2012-13	Saint Louis	28-7	NCAA Tournament
2013-14	Saint Louis	27-7	NCAA Tournament
2014-15	Saint Louis	8-4	In progress
TOTAL	27 yrs.	417-366 (.533)	

Assistant Coach			
1977-78	Indiana	21-8	NCAA Tournament
1978-79	Indiana	22-12	NIT
1979-80	Indiana	21-8	NCAA Tournament
1980-81	Indiana	26-9	NCAA Champions
1981-82	Indiana	19-10	NCAA Tournament
1982-83	Indiana	24-6	NCAA Tournament
1983-84	Indiana	22-9	NCAA Tournament
1984-85	Indiana	19-14	NIT
2011-12	Saint Louis	26-8	NCAA Tournament

Player			
1972-73	Indiana	22-6	NCAA Final Four
1973-74	Indiana	23-5	--
1974-75	Indiana	31-1	NCAA Tournament
1975-76	Indiana	32-0	NCAA Champions



< Scan QR Code for Jim Crews' complete bio on SLUBillikens.com



35 • REGGIE AGBEKO



Sophomore • Forward • 6-7 • 240 • Buffalo, N.Y. • South Kent School | MAJOR: Undecided

SEASON HIGHLIGHTS

► Scored seven points on 3-of-4 shooting in the win against SIUE ... eclipsed his career scoring high in the second straight game after posting nine points vs. Rockhurst ... was 5-of-5 from the free-throw line ... scored a career-high eight points in the win against Bradley ... posted five rebounds against Texas A&M-Corpus Christi ... grabbed a career-high six rebounds in the win against Indiana State ... was especially effective late in the first half against the Sycamores to help SLU gain the lead ... played nine minutes in the win against Southern Illinois ... picked up a rebound and added an assist.

► 2013-14 • FRESHMAN

Tied a career high with four rebounds in the win against Yale ... hit his only shot from the field against North Carolina A&T, his first game back after suffering a concussion in the Valpo game ... was 2-for-3 from the field with five points in 14 minutes in his first-career start against Old Dominion ... had four points in nine minutes against Bowling Green ... played nine minutes against Oral Roberts and collected four rebounds ... nailed the only shot he took from the field ... hit both of this shots from the field against Southern Illinois, the first action of his career ... played six minutes against the Salukis.

► PREVIOUS

Comes to SLU from South Kent School, a prep school in Connecticut that plays in the New England Preparatory School Athletic Council, one of the premier prep leagues in the country ... earned second-team All-NEPSAC honors at South Kent ... played the previous two seasons at St. Joseph's College Institute in Buffalo, N.Y. ... averaged a double-double over two seasons with the Marauders ... native of Ghana who moved to Buffalo in 2010.

SEASON/CAREER HIGHS

POINTS

SEASON: 9 vs. Rockhurst, 12/2/14
CAREER: 9 vs. Rockhurst, 12/2/14

REBOUNDS

SEASON: 6 at Indiana St., 11/18/14
CAREER: 6 at Indiana St., 11/18/14

ASSISTS

SEASON: 1 vs. SIU, 11/15/14
CAREER: 1, three times

STEALS

SEASON: 1 vs. Rockhurst, 11/2/14
CAREER: 1, twice

BLOCKS

SEASON:
CAREER: 1 vs. ORU, 11/21/13

FIELD GOALS MADE

SEASON: 3 vs. Bradley, 11/29/14
CAREER: 3 vs. Bradley, 11/29/14

FIELD GOAL ATTEMPTS

SEASON: 6 vs. Bradley, 11/29/14
CAREER: 6 vs. Bradley, 11/29/14

3-PT. FIELD GOALS MADE

SEASON:
CAREER:

3-PT. FIELD GOALS ATTEMPTED

SEASON:
CAREER:

FREE THROWS MADE

SEASON: 5 vs. Rockhurst, 12/2/14
CAREER: 5 vs. Rockhurst, 12/2/14

FREE THROWS ATTEMPTED

SEASON: 5 vs. Rockhurst, 12/2/14
CAREER: 5 vs. Rockhurst, 12/2/14

MINUTES PLAYED

SEASON: 26 vs. Bradley, 11/29/14
CAREER: 26 vs. Bradley, 11/29/14

AGBEKO'S 2014-15 GAME-BY-GAME STATISTICS

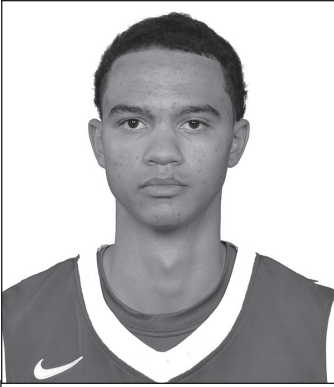
Opponent	Date	gs	min	Total		3-Pointers		Free throws		Rebounds				pf	a	t/o	blk	stl	pts	avg
				fg-fga	pct	3fg-fga	pct	ft-fa	pct	off	def	tot	avg							
SOUTHERN ILLINOIS	11/15/14	9	0-2	.000	0-0	.000	1-2	.500	0	1	1	1.0	0	1	1	0	0	1	1.0	
at Indiana State	11/18/14	13	1-2	.500	0-0	.000	0-1	.000	1	5	6	3.5	1	0	0	0	0	2	1.5	
TEXAS A&M-CORPUS CH	11/23/14	* 16	1-3	.333	0-0	.000	1-3	.333	2	3	5	4.0	2	0	0	0	0	3	2.0	
NORTH CAROLINA A&T	11/25/14	* 11	0-0	.000	0-0	.000	0-0	.000	0	4	4	4.0	0	0	2	0	0	0	1.5	
vs Mississippi State	11/28/14	17	2-2	1.000	0-0	.000	2-2	1.000	1	1	2	3.6	0	0	1	0	0	6	2.4	
vs Bradley	11/29/14	* 26	3-6	.500	0-0	.000	2-3	.667	0	4	4	3.7	1	0	1	0	0	8	3.3	
ROCKHURST	12/02/14	* 14	2-5	.400	0-0	.000	5-5	1.000	1	2	3	3.6	0	0	0	0	1	9	4.1	
at Wichita State	12/06/14	* 8	1-2	.500	0-0	.000	0-0	.000	0	0	0	3.1	4	0	3	0	0	2	3.9	
SOUTH DAKOTA STATE	12/09/14	* 8	0-1	.000	0-0	.000	3-6	.500	1	0	1	2.9	0	0	1	0	1	3	3.8	
SIUE	12/13/14	14	3-4	.750	0-0	.000	1-4	.250	0	1	1	2.7	2	0	2	0	0	7	4.1	
TEXAS PAN-AMERICAN	12/17/14	6	0-0	.000	0-0	.000	0-0	.000	0	2	2	2.6	0	0	0	0	0	0	3.7	
VERMONT	12/21/14	4	1-1	1.000	0-0	.000	0-0	.000	0	1	1	2.5	3	0	1	0	0	2	3.6	
Totals		6	146	14-28	.500	0-0	.000	15-26	.577	6	24	30	2.5	13	1	12	0	2	43	3.6

Games played: 12
Minutes/game: 12.2
Points/game: 3.6
FG Pct: 50.0
FT Pct: 57.7

Rebounds/game: 2.5
Assists/game: 0.1
Turnovers/game: 1.0
Assist/turnover ratio: 0.1
Steals/game: 0.2

AGBEKO'S CAREER STATISTICS

Season	gp-gs	min/avg	Total		3-Point		F-Throws		Rebounds				Scoring							
			fg-fga	pct	fg-fga	pct	ft-fa	pct	off	def	tot	avg	pf	fo	ast	to	blk	stl	pts	avg
2013-14	17-2	95/5.6	13-17	.765	0-0	.000	2-7	.286	6	18	24	1.4	9	0	2	6	1	1	28	1.6
2014-15	12-6	146/12.2	14-28	.500	0-0	.000	15-26	.577	6	24	30	2.5	13	0	1	12	0	2	43	3.6
TOTAL	29-8	241/8.3	27-45	.600	0-0	.000	17-33	.515	12	42	54	1.9	22	0	3	18	1	3	71	2.4



0 • MARCUS BARTLEY



Freshman • Guard • 6-4 • 170 • Decatur, Ill. • MacArthur HS | MAJOR: Business Admin.

SEASON HIGHLIGHTS

► Turned in a team-high 13 points against Wichita State ... also recorded four steals against the Shockers ... earned his first start against Bradley and responded with a team-high three assists ... distributed three assists against Texas A&M-Corpus Christi ... nailed both his 3-point attempts against Indiana State en route to 10 points ... also dished out two assists and had a steal in 20 minutes of action ... made his collegiate debut in the Southern Illinois game and hit a free throw for the first point of his career ... among the first off the bench in the season opener vs. SIU.

► PREVIOUS

Four-year point guard out of MacArthur High School in Decatur, Ill. ... also played AAU for the Peoria (Ill.) Irish ... Associated Press Class 3A All-State honorable mention selection ... earned a special mention All-State nod from the Chicago Tribune ... averaged 18.7 points, 6.3 rebounds, 6.7 assists and 3.3 steals his senior year ... led the Generals to a 16-11 record and his team nearly upset top-ranked Lincoln in a regional final matchup.

SEASON/CAREER HIGHS

POINTS

SEASON: 13 at Wichita St., 12/6/14
CAREER: 13 at Wichita St., 12/6/14

REBOUNDS

SEASON: 3, four times
CAREER: 3, four times

ASSISTS

SEASON: 3, three times
CAREER: 3, three times

STEALS

SEASON: 4 at Wichita St., 12/6/14
CAREER: 4 at Wichita St., 12/6/14

BLOCKS

SEASON:
CAREER:

FIELD GOALS MADE

SEASON: 5 at Wichita St., 12/6/14
CAREER: 5 at Wichita St., 12/6/14

FIELD GOAL ATTEMPTS

SEASON: 7 at Wichita St., 12/6/14
CAREER: 7 at Wichita St., 12/6/14

3-PT. FIELD GOALS MADE

SEASON: 2 at Indiana St., 11/18/14
CAREER: 2 at Indiana St., 11/18/14

3-PT. FIELD GOALS ATTEMPTED

SEASON: 3 vs. Bradley, 11/29/14
CAREER: 3 vs. Bradley, 11/29/14

FREE THROWS MADE

SEASON: 2, four times
CAREER: 2, four times

FREE THROWS ATTEMPTED

SEASON: 4 vs. TAMCC, 11/23/14
CAREER: 4 vs. TAMCC, 11/23/14

MINUTES PLAYED

SEASON: 23 at Wichita St., 12/6/14
CAREER: 23 at Wichita St., 12/6/14

BARTLEY'S 2014-15 GAME-BY-GAME STATISTICS

Opponent	Date	gs	min	Total		3-Pointers		Free throws		Rebounds			pf	a	t/o	blk	stl	pts	avg		
				fg-fga	pct	3fg-fga	pct	ft-fa	pct	off	def	tot								avg	
SOUTHERN ILLINOIS	11/15/14		11	0-0	.000	0-0	.000	1-2	.500	0	0	0	0.0	1	1	0	0	1	1.0		
at Indiana State	11/18/14		20	3-4	.750	2-2	1.000	2-2	1.000	0	3	3	1.5	3	2	2	0	1	10	5.5	
TEXAS A&M-CORPUS CH	11/23/14		20	0-2	.000	0-1	.000	2-4	.500	0	0	0	1.0	2	3	2	0	0	2	4.3	
NORTH CAROLINA A&T	11/25/14		15	0-2	.000	0-2	.000	0-0	.000	0	1	1	1.0	3	2	3	0	0	0	3.3	
vs Mississippi State	11/28/14		22	1-3	.333	1-2	.500	0-0	.000	0	2	2	1.2	1	2	1	0	0	3	3.2	
vs Bradley	11/29/14	*	22	0-4	.000	0-3	.000	0-0	.000	0	2	2	1.3	5	3	2	0	0	0	2.7	
ROCKHURST	12/02/14	*	16	0-1	.000	0-0	.000	2-2	1.000	0	1	1	1.3	0	2	1	0	0	2	2.6	
at Wichita State	12/06/14		23	5-7	.714	1-2	.500	2-3	.667	0	3	3	1.5	2	2	1	0	4	13	3.9	
SOUTH DAKOTA STATE	12/09/14		16	1-5	.200	1-2	.500	0-0	.000	1	2	3	1.7	4	0	2	0	0	3	3.8	
SIUE	12/13/14		16	1-3	.333	0-2	.000	0-0	.000	1	2	3	1.8	1	3	2	0	0	2	3.6	
TEXAS PAN-AMERICAN	12/17/14		13	1-2	.500	0-1	.000	1-1	1.000	0	0	0	1.6	4	2	1	0	0	3	3.5	
VERMONT	12/21/14		13	1-3	.333	0-0	.000	0-2	.000	1	0	1	1.6	2	0	0	0	0	2	3.4	
Totals			2	207	13-36	.361	5-17	.294	10-16	.625	3	16	19	1.6	28	22	17	0	5	41	3.4

Games played: 12
Minutes/game: 17.3
Points/game: 3.4
FG Pct: 36.1
3FG Pct: 29.4
FT Pct: 62.5

Rebounds/game: 1.6
Assists/game: 1.8
Turnovers/game: 1.4
Assist/turnover ratio: 1.3
Steals/game: 0.4

BARTLEY'S CAREER STATISTICS

Season	gp-gs	min/avg	Total		3-Point		F-Throws		Rebounds				Scoring							
			fg-fga	pct	fg-fga	pct	ft-fa	pct	off	def	tot	avg	pf	fo	ast	to	blk	stl	pts	avg
2014-15	12-2	207/17.3	13-36	.361	5-17	.294	10-16	.625	3	16	19	1.6	28	1	22	17	0	5	41	3.4
TOTAL	12-2	207/17.3	13-36	.361	5-17	.294	10-16	.625	3	16	19	1.6	28	1	22	17	0	5	41	3.4



32 • MIKE CRAWFORD



Sophomore • Guard • 6-4 • 200 • Tipton, Ind. • Tipton HS | MAJOR: Business Administration

SEASON HIGHLIGHTS

► Had a breakout game against UTPA, scoring a career-high 19 points on 4-of-8 shooting from the floor, 3-of-4 from 3-point range and 8-of-10 from the stripe ... scored eight points in the win against Indiana State ... drained a career-high 10 points in the win against Southern Illinois ... saw a career-high 27 minutes of action against the Salukis ... was 4-of-6 from the field ... sank a game-tying 3-pointer against SIU with 1:52 remaining.

► 2013-14 • SOPHOMORE

Hit two crucial second-half treys against St. Bonaventure ... dished out a career-best two assists in eight minutes against Rockhurst ... started career hitting 5-of-5 from the field, including 2-of-2 from long range ... logged a career-high 10 minutes at SIUE ... hit his lone shot from the floor, giving him a perfect shooting mark (4-of-4) for his career ... scored eight points in just three minutes in his collegiate debut against Southeast Missouri State ... was 3-of-3 from the field and 1-for-1 from long range against the Redhawks.

► PREVIOUS

All-State performer and Indiana Mr. Basketball candidate ... graduates as Tipton's all-time leading scorer with 2,104 career points ... that point total among the top 30 in Indiana prep history ... led the Blue Devils to three consecutive berths in the Indiana Class 2A final four ... in his four years, helped Tipton forge a remarkable 93-14 record ... as a senior, averaged 27.7 ppg and 8.9 rpg in leading Tipton to a school-record 25 wins and its third straight Class 2A regional title ... scored 35 points on 11-of-22 shooting and 10-of-11 from the line in a win against No. 8 Kokomo (Class 4A) ... as a junior, was the Blue Devils' top 3-point shooter and averaged more than 20.0 ppg and 6.0 rpg ... Indiana Junior All-Star selection ... one of just 12 players in his school's history to reach 1,000 points for his career ... Academic first-team selection by the Indiana Basketball Coaches Association.

SEASON/CAREER HIGHS

POINTS

SEASON: 19 vs. UTPA, 12/17/14
CAREER: 19 vs. UTPA, 12/17/14

REBOUNDS

SEASON: 2, twice
CAREER: 3 vs. Richmond, 1/29/14

ASSISTS

SEASON: 2, three times
CAREER: 3 at Dayton, 1/11/14

STEALS

SEASON: 2 vs. UTPA, 12/17/14
CAREER: 2 vs. UTPA, 12/17/14

BLOCKS

SEASON:
CAREER:

FIELD GOALS MADE

SEASON: 4, twice
CAREER: 4, twice

FIELD GOAL ATTEMPTS

SEASON: 8 vs. UTPA, 12/17/14
CAREER: 8 vs. UTPA, 12/17/14

3-PT. FIELD GOALS MADE

SEASON: 3 vs. UTPA, 12/17/14
CAREER: 3 vs. UTPA, 12/17/14

3-PT. FIELD GOALS ATTEMPTED

SEASON: 4 vs. UTPA, 12/17/14
CAREER: 4 vs. UTPA, 12/17/14

FREE THROWS MADE

SEASON: 8 vs. UTPA, 12/17/14
CAREER: 8 vs. UTPA, 12/17/14

FREE THROWS ATTEMPTED

SEASON: 10 vs. UTPA, 12/17/14
CAREER: 10 vs. UTPA, 12/17/14

MINUTES PLAYED

SEASON: 27, twice
CAREER: 27, twice

CRAWFORD'S 2014-15 GAME-BY-GAME STATS

Opponent	Date	gs	min	Total		3-Pointers		Free throws		Rebounds				pf	a	t/o	blk	stl	pts	avg
				fg-fga	pct	3fg-fga	pct	ft-fa	pct	off	def	tot	avg							
SOUTHERN ILLINOIS	11/15/14		27	4-6	.667	1-1	1.000	1-2	.500	1	1	2	2.0	2	2	0	1	10	10.0	
at Indiana State	11/18/14		24	2-5	.400	1-3	.333	3-4	.750	0	2	2	2.0	1	1	2	0	8	9.0	
TEXAS A&M-CORPUS CH	11/23/14		8	1-2	.500	0-0	.000	0-0	.000	0	0	0	1.3	2	0	0	1	2	6.7	
NORTH CAROLINA A&T	11/25/14		17	0-4	.000	0-1	.000	4-4	1.000	0	1	1	1.3	1	0	1	0	4	6.0	
vs Mississippi State	11/28/14		15	1-3	.333	0-2	.000	0-0	.000	1	0	1	1.2	0	0	1	0	2	5.2	
vs Bradley	11/29/14		15	2-4	.500	0-2	.000	0-1	.000	0	0	0	1.0	2	2	1	1	4	5.0	
ROCKHURST	12/02/14		14	2-3	.667	1-1	1.000	1-2	.500	0	1	1	1.0	0	1	1	0	6	5.1	
at Wichita State	12/06/14		8	1-2	.500	0-0	.000	0-0	.000	1	0	1	1.0	0	0	1	0	2	4.8	
SOUTH DAKOTA STATE	12/09/14		9	2-2	1.000	0-0	.000	1-1	1.000	0	0	0	0.9	0	0	0	0	5	4.8	
SIUE	12/13/14		25	1-3	.333	0-1	.000	2-3	.667	1	1	2	1.0	2	2	0	1	4	4.7	
TEXAS PAN-AMERICAN	12/17/14		26	4-8	.500	3-4	.750	8-10	.800	0	1	1	1.0	2	2	1	0	2	19	6.0
VERMONT	12/21/14		27	3-5	.600	1-2	.500	2-2	1.000	0	1	1	1.0	1	1	1	0	1	9	6.3
Totals		0	215	23-47	.489	7-17	.412	22-29	.759	4	8	12	1.0	13	9	13	1	6	75	6.3

Games played: 12
Minutes/game: 17.9
Points/game: 6.3
FG Pct: 48.9
3FG Pct: 41.2
FT Pct: 75.9

Rebounds/game: 1.0
Assists/game: 0.8
Turnovers/game: 1.1
Assist/turnover ratio: 0.7
Steals/game: 0.5
Blocks/game: 0.1

CRAWFORD'S CAREER STATISTICS

Season	gp-gs	min/avg	Total		3-Point		F-Throws			Rebounds				Scoring						
			fg-fga	pct	fg-fga	pct	ft-fa	pct	off	def	tot	avg	pf	fo	ast	to	blk	stl	pts	avg
2013-14	24-0	180/7.5	17-43	.395	9-21	.429	5-7	.714	1	13	14	0.6	17	0	10	11	0	4	48	2.0
2014-15	12-0	215/17.9	23-47	.489	7-17	.412	22-29	.759	4	8	12	1.0	13	0	9	13	1	6	75	6.3
TOTAL	36-0	395/11.0	40-90	.444	16-38	.421	27-36	.750	5	21	26	0.7	30	0	19	24	1	10	123	3.4



25 • AUSTIN GILLMANN



Freshman • Center • 6-10 • 210 • St. Louis, Mo. • Oakville HS | MAJOR: Engineering

SEASON HIGHLIGHTS

► Was 3-for-3 from the field against Vermont ... also distributed two assists ... scored eight points and had a pair of assists against UTPA ... hit all three of his chances from the floor en route to six points against SIUE ... also dished out a pair of assists ... scored seven points and dished out a career-high two assists in a career-best 25 minutes against South Dakota State ... hit a pair of treys en route to nine points against Wichita State ... scored seven points in the win against Rockhurst ... hit a 3-pointer against Indiana State ... led all Billiken rookies with six points against Southern Illinois ... was 2-of-3 from the field, including a 3-pointer ... fed Austin McBroom on his game-winning 3-pointer ... was among the first Billikens off the bench against the Salukis.

► PREVIOUS

Four-year starting center from Oakville High School, which is located in a suburb of St. Louis ... as a senior, led the Tigers with 16.3 points and 9.6 rebounds ... averaged 3.7 blocks and shot 65 percent from the field ... earned All-Conference honors as a junior after averaging 12.7 points and 8.9 rebounds ... turned in 13.2 points and 9.9 rebounds as a sophomore and 8.1 points and 6.4 boards as a freshman ... four-time All-Conference selection at Oakville ... played for the St. Louis Gateway AAU club.

SEASON/CAREER HIGHS

POINTS

SEASON: 9 at Wichita St., 12/6/14
CAREER: 9 at Wichita St., 12/6/14

REBOUNDS

SEASON: 4, twice
CAREER: 4, twice

ASSISTS

SEASON: 2, four times
CAREER: 2, four times

STEALS

SEASON: 1, three times
CAREER: 1, three times

BLOCKS

SEASON: 1 at Wichita St., 12/6/14
CAREER: 1 at Wichita St., 12/6/14

FIELD GOALS MADE

SEASON: 3, six times
CAREER: 3, six times

FIELD GOAL ATTEMPTS

SEASON: 9 vs. SDSU, 12/9/14
CAREER: 9 vs. SDSU, 12/9/14

3-PT. FIELD GOALS MADE

SEASON: 2 at Wichita St., 12/6/14
CAREER: 2 at Wichita St., 12/6/14

3-PT. FIELD GOALS ATTEMPTED

SEASON: 5 vs. SDSU, 12/9/14
CAREER: 5 vs. SDSU, 12/9/14

FREE THROWS MADE

SEASON: 2 vs. UTPA, 12/17/14
CAREER: 2 vs. UTPA, 12/17/14

FREE THROWS ATTEMPTED

SEASON: 3 at Wichita St., 12/6/14
CAREER: 3 at Wichita St., 12/6/14

MINUTES PLAYED

SEASON: 25 vs. SDSU, 12/9/14
CAREER: 25 vs. SDSU, 12/9/14

GILLMANN'S 2014-15 GAME-BY-GAME STATS

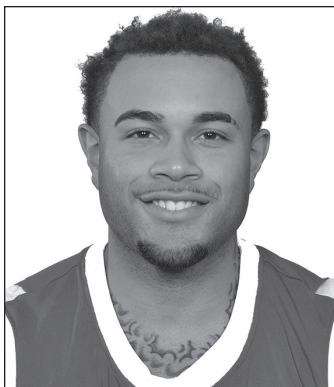
Opponent	Date	gs	min	Total		3-Pointers		Free throws		Rebounds					pts	avg				
				fg-fga	pct	3fg-fga	pct	ft-fa	pct	off	def	tot	avg	pf			a	t/o	blk	stl
SOUTHERN ILLINOIS	11/15/14	17	2-3	.667	1-2	.500	1-1	1.000	0	4	4	4.0	2	1	3	0	1	6	6.0	
at Indiana State	11/18/14	18	1-3	.333	1-1	1.000	0-0	.000	0	1	1	2.5	0	0	0	0	0	3	4.5	
TEXAS A&M-CORPUS CH	11/23/14	5	0-0	.000	0-0	.000	0-0	.000	1	0	1	2.0	0	1	0	0	0	0	3.0	
NORTH CAROLINA A&T	11/25/14 *	14	1-2	.500	0-0	.000	0-0	.000	1	0	1	1.8	1	0	1	0	0	2	2.8	
vs Mississippi State	11/28/14	9	0-1	.000	0-0	.000	0-0	.000	1	1	2	1.8	0	0	0	0	0	0	2.2	
vs Bradley	11/29/14	8	0-1	.000	0-1	.000	0-0	.000	0	1	1	1.7	1	1	0	0	1	0	1.8	
ROCKHURST	12/02/14	18	3-4	.750	1-1	1.000	0-0	.000	0	1	1	1.6	2	1	0	0	0	7	2.6	
at Wichita State	12/06/14	18	3-5	.600	2-4	.500	1-3	.333	0	4	4	1.9	0	0	1	1	1	9	3.4	
SOUTH DAKOTA STATE	12/09/14	25	3-9	.333	1-5	.200	0-2	.000	0	2	2	1.9	3	2	1	1	0	7	3.8	
SIUE	12/13/14	11	3-3	1.000	0-0	.000	0-0	.000	1	2	3	2.0	0	2	2	0	0	6	4.0	
TEXAS PAN-AMERICAN	12/17/14	12	3-5	.600	0-1	.000	2-2	1.000	1	0	1	1.9	0	2	1	0	0	8	4.4	
VERMONT	12/21/14	16	3-3	1.000	1-1	1.000	0-0	.000	0	1	1	1.8	0	2	0	0	0	7	4.6	
Totals		1	171	22-39	.564	7-16	.438	4-8	.500	5	17	22	1.8	9	12	9	2	3	55	4.6

Games played: 12
Minutes/game: 14.3
Points/game: 4.6
FG Pct: 56.4
3FG Pct: 43.8
FT Pct: 50.0

Rebounds/game: 1.8
Assists/game: 1.0
Turnovers/game: 0.8
Assist/turnover ratio: 1.3
Steals/game: 0.3
Blocks/game: 0.2

GILLMANN'S CAREER STATISTICS

Season	gp-gs	min/avg	Total		3-Point		F-Throws		Rebounds				Scoring							
			fg-fga	pct	fg-fga	pct	ft-fa	pct	off	def	tot	avg	pf	fo	ast	to	blk	stl	pts	avg
2014-15	12-1	171/14.3	22-39	.564	7-16	.438	4-8	.500	5	17	22	1.8	9	0	12	9	2	3	55	4.6
TOTAL	12-1	171/14.3	22-39	.564	7-16	.438	4-8	.500	5	17	22	1.8	9	0	12	9	2	3	55	4.6



1 • GRANDY GLAZE



Senior • Forward • 6-6 • 235 • Toronto, Ont. • Notre Dame Prep | MAJOR: Communication

SEASON HIGHLIGHTS

► Suffered a shoulder injury in practice Thursday, Nov. 13, and will have season-ending surgery on Jan. 5.

► 2013-14 • JUNIOR

Played in all 34 games, starting six ... averaged 3.8 ppg and was third on the squad with 4.5 rpg ... shot 48.2 percent (53-110) from the field ... recorded double-digit rebounding totals on five occasions ... started the season with his first career double-double with 16 points and 10 rebounds against Southeast Missouri State ... was 7-of-7 from the field against the Redhawks, tied for the best perfect shooting performance by a Billiken at Chaifetz Arena ... followed that performance with a career-high 14 rebounds against SIUE ... was one point away from his second straight double-double with nine points against the Cougars.

► 2012-13 • SOPHOMORE

Appeared in 25 games, including 20 starts ... averaged 3.1 ppg and 2.6 rpg ... broke into the starting lineup near the beginning of the conference season and started the final 18 games.

► 2011-12 • FRESHMAN

Appeared in nine games his rookie season.

PREVIOUS

Spent one season at Notre Dame Prep in Fitchburg, Mass., the same prep school that produced former Billikens Jake Barnett and Jordair Jett ... also attended Proctor Academy in Andover, N.H. ... played AAU ball for CIA Bounce and Team Takeover Canada.

SEASON/CAREER HIGHS

POINTS

SEASON:
CAREER: 16 vs. SEMO, 11/8/13

REBOUNDS

SEASON:
CAREER: 14 at SIUE, 11/13/13

ASSISTS

SEASON:
CAREER: 3 vs. Butler, 2/22/13

STEALS

SEASON:
CAREER: 2, four times

BLOCKS

SEASON:
CAREER: 2 vs. BGSU, 11/23/13

FIELD GOALS MADE

SEASON:
CAREER: 7 vs. SEMO, 11/8/13

FIELD GOAL ATTEMPTS

SEASON:
CAREER: 8, four times

3-PT. FIELD GOALS MADE

SEASON:
CAREER:

3-PT. FIELD GOALS ATTEMPTED

SEASON:
CAREER:

FREE THROWS MADE

SEASON:
CAREER: 4, twice

FREE THROWS ATTEMPTED

SEASON:
CAREER: 7 vs. GW, 2/22/14

MINUTES PLAYED

SEASON:
CAREER: 27 vs. Duquesne, 1/23/13

GLAZE'S 2014-15 GAME-BY-GAME STATS

GLAZE'S CAREER STATISTICS

Season	gp-gs	min/avg	Total		3-Point		F-Throws		Rebounds				Scoring							
			fg-fga	pct	fg-fga	pct	ft-fta	pct	off	def	tot	avg	pf	fo	ast	to	blk	stl	pts	avg
2011-12	9-0	29/3.2	1-6	.167	0-0	.000	0-2	.000	1	4	5	0.6	2	0	2	2	0	1	2	0.2
2012-13	25-20	301/12.0	37-73	.507	0-0	.000	3-12	.250	21	44	65	2.6	28	0	13	13	3	13	77	3.1
2013-14	34-6	438/12.9	53-110	.482	0-0	.000	24-34	.706	42	111	153	4.5	45	1	11	29	10	14	130	3.8
TOTAL	68-26	768/11.3	91-189	.481	0-0	.000	27-48	.563	64	159	223	3.3	75	1	26	44	13	28	209	3.1

14 • BRETT JOLLY



Freshman • Forward • 6-9 • 230 • Southlake, Texas • Blair Academy (NJ) | MAJOR: Business Admin.



SEASON/CAREER HIGHS

POINTS

SEASON: 10 vs. Bradley, 11/29/14
 CAREER: 10 vs. Bradley, 11/29/14

REBOUNDS

SEASON: 4 at Indiana St., 11/18/14
 CAREER: 4 at Indiana St., 11/18/14

ASSISTS

SEASON: 3 vs. Bradley, 11/29/14
 CAREER: 3 vs. Bradley, 11/29/14

STEALS

SEASON: 1 at Indiana St., 11/18/14
 CAREER: 1 at Indiana St., 11/18/14

BLOCKS

SEASON: 1, five times
 CAREER: 1, five times

FIELD GOALS MADE

SEASON: 4 vs. Bradley, 11/29/14
 CAREER: 4 vs. Bradley, 11/29/14

FIELD GOAL ATTEMPTS

SEASON: 6 vs. Bradley, 11/29/14
 CAREER: 6 vs. Bradley, 11/29/14

3-PT. FIELD GOALS MADE

SEASON: 1, twice
 CAREER: 1, twice

3-PT. FIELD GOALS ATTEMPTED

SEASON: 3 at Wichita St., 12/6/14
 CAREER: 3 at Wichita St., 12/6/14

FREE THROWS MADE

SEASON: 5 at Indiana St., 11/18/14
 CAREER: 5 at Indiana St., 11/18/14

FREE THROWS ATTEMPTED

SEASON: 6 at Indiana St., 11/18/14
 CAREER: 6 at Indiana St., 11/18/14

MINUTES PLAYED

SEASON: 32 vs. Miss. St., 11/28/14
 CAREER: 32 vs. Miss. St., 11/28/14

SEASON HIGHLIGHTS

► Was 4-of-4 from the charity stripe en route to seven points at Wichita State ... made the first start of his career against Bradley and responded with a career-high 10 points ... also dished out a career-best three assists ... was also effective on the defensive end, drawing three charges ... hit all four of his free throws against North Carolina A&T ... was 5-of-6 from the charity stripe against Indiana State ... played 10 minutes in the season opener against Southern Illinois ... recorded one block.

►PREVIOUS

Played one year at Blair Academy in Blairstown, N.J., after graduating from Southlake Carroll High School in Texas ... also played AAU ball for the Dallas Seawolves ... averaged 8.3 points and 5.7 rebounds as a senior at Southlake Carroll ... finished in double figures in leading Blair Academy past St. Benedict's for the Prep A state championship.

JOLLY'S 2014-15 GAME-BY-GAME STATS

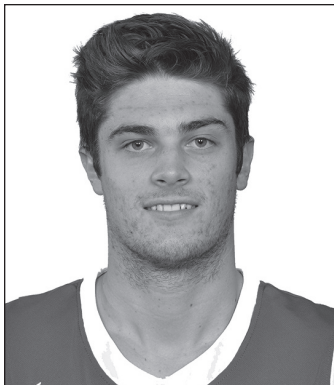
Opponent	Date	gs	min	Total		3-Pointers		Free throws		Rebounds				pf	a	t/o	blk	stl	pts	avg
				fg-fga	pct	3fg-fga	pct	ft-fa	pct	off	def	tot	avg							
SOUTHERN ILLINOIS	11/15/14	10	0-1	.000	0-0	.000	0-2	.000	0	0	0	0.0	3	0	0	1	0	0	0.0	
at Indiana State	11/18/14	10	0-1	.000	0-0	.000	5-6	.833	2	2	4	2.0	4	1	1	1	1	5	2.5	
TEXAS A&M-CORPUS CH	11/23/14	18	1-2	.500	0-0	.000	0-2	.000	1	1	2	2.0	2	0	1	0	0	2	2.3	
NORTH CAROLINA A&T	11/25/14	9	0-0	.000	0-0	.000	4-4	1.000	1	2	3	2.3	1	0	1	0	0	4	2.8	
vs Mississippi State	11/28/14	16	2-3	.667	1-2	.500	0-0	.000	0	1	1	2.0	2	0	1	1	0	5	3.2	
vs Bradley	11/29/14 *	32	4-6	.667	0-1	.000	2-3	.667	1	1	2	2.0	3	2	1	1	0	10	4.3	
ROCKHURST	12/02/14 *	14	0-3	.000	0-2	.000	0-0	.000	0	0	0	1.7	1	1	1	0	0	0	3.7	
at Wichita State	12/06/14	15	1-4	.250	1-3	.333	4-4	1.000	0	1	1	1.6	4	0	1	0	0	7	4.1	
SOUTH DAKOTA STATE	12/09/14	3	0-1	.000	0-1	.000	0-0	.000	0	0	0	1.4	1	0	0	0	0	0	3.7	
SIUE	12/13/14	6	0-3	.000	0-2	.000	0-0	.000	0	0	0	1.3	3	0	0	0	0	0	3.3	
TEXAS PAN-AMERICAN	12/17/14	7	0-1	.000	0-0	.000	0-0	.000	1	1	2	1.4	0	0	0	1	0	0	3.0	
VERMONT	12/21/14	4	0-1	.000	0-0	.000	0-0	.000	0	0	0	1.3	0	0	0	0	0	0	2.8	
Totals		2	144	8-26	.308	2-11	.182	15-21	.714	6	9	15	1.3	24	4	7	5	1	33	2.8

Games played: 12
 Minutes/game: 12.0
 Points/game: 2.8
 FG Pct: 30.8
 3FG Pct: 18.2
 FT Pct: 71.4

Rebounds/game: 1.3
 Assists/game: 0.3
 Turnovers/game: 0.6
 Assist/turnover ratio: 0.6
 Steals/game: 0.1
 Blocks/game: 0.4

JOLLY'S CAREER STATISTICS

Season	gp-gs	min/avg	Total		3-Point		F-Throws		Rebounds				Scoring							
			fg-fga	pct	fg-fga	pct	ft-fa	pct	off	def	tot	avg	pf	fo	ast	to	blk	stl	pts	avg
2014-15	12-2	144/12.0	8-26	.308	2-11	.182	15-21	.714	6	9	15	1.3	24	0	4	7	5	1	33	2.8
TOTAL	12-2	144/12.0	8-26	.308	2-11	.182	15-21	.714	6	9	15	1.3	24	0	4	7	5	1	33	2.8



15 • TANNER LANCONA



Sophomore • Forward • 6-8 • 230 • Trabuco Canyon, Calif. • Tesoro HS | MAJOR: Undecided

SEASON HIGHLIGHTS

► Hit both of his baskets against SIUE with less than four minutes to go to help the Billikens seal the victory ... also dished out a career-best three assists against the Cougars ... scored five points, including a 3-pointer, in the win against Rockhurst ... recorded a career-high three steals in the win against North Carolina A&T ... earned his first career start in the Southern Illinois game ... pulled down three rebounds.

► 2013-14 • FRESHMAN

Appeared in 21 games ... averaged 2.3 ppg and 1.4 rpg for the Billikens ... averaged close to 15 minutes per game over the last four contests of the season.

► PREVIOUS

Comes to SLU from Tesoro High School, where he averaged 19.1 ppg, 8.0 rpg and 5.0 apg during his senior campaign ... led the Titans to a 21-season and an appearance in the final four in Division 2A CIF-SS ... two-time All-State selection his junior and senior seasons ... second-team All-League selection as a sophomore ... named a top 25 player in the state of California by ESPN ... played AAU ball for Double Pump Elite in 2013 ... signed an NLI at Washington State during the early signing period but was granted a release.

SEASON/CAREER HIGHS

POINTS

SEASON: 6 vs. TAMCC, 11/23/14
CAREER: 12 vs. BGSU, 11/23/13

REBOUNDS

SEASON: 3 vs. SIU, 11/15/14
CAREER: 5 vs. Rockhurst, 12/3/13

ASSISTS

SEASON: 3 vs. SIUE, 12/13/14
CAREER: 3 vs. SIUE, 12/13/14

STEALS

SEASON: 3 vs. NCAT, 11/25/14
SEASON: 3 vs. NCAT, 11/25/14

BLOCKS

SEASON: 1 vs. UTPA, 12/17/14
CAREER: 1, four times

FIELD GOALS MADE

SEASON: 3 vs. TAMCC, 11/23/14
CAREER: 5 vs. BGSU, 11/23/13

FIELD GOAL ATTEMPTS

SEASON: 5 vs. Miss. St., 11/28/14
CAREER: 7 vs. BGSU, 11/23/13

3-PT. FIELD GOALS MADE

SEASON:
CAREER: 2 vs. BGSU, 11/23/13

3-PT. FIELD GOALS ATTEMPTED

SEASON: 1, twice
CAREER: 3 vs. BGSU, 11/23/13

FREE THROWS MADE

SEASON:
CAREER: 4 vs. NC A&T, 12/21/13

FREE THROWS ATTEMPTED

SEASON:
CAREER: 5 vs. NC A&T, 12/21/13

MINUTES PLAYED

SEASON: 23 vs. NCAT, 11/25/14
CAREER: 23 vs. NCAT, 11/25/14

LANCONA'S 2014-15 GAME-BY-GAME STATS

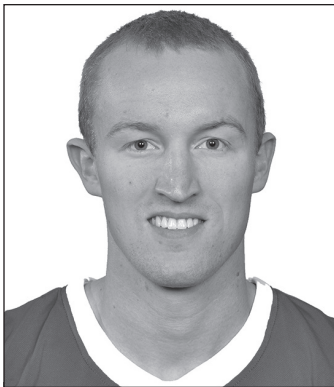
Opponent	Date	gs	min	Total		3-Pointers		Free throws		Rebounds				pf	a	t/o	blk	stl	pts	avg	
				fg-fga	pct	3fg-fga	pct	ft-fa	pct	off	def	tot	avg								
SOUTHERN ILLINOIS	11/15/14	*	12	0-1	.000	0-1	.000	0-0	.000	0	3	3	3.0	1	1	0	0	0	0	0.0	
at Indiana State	11/18/14	*	11	0-2	.000	0-1	.000	0-0	.000	0	1	1	2.0	1	0	0	0	0	0.0		
TEXAS A&M-CORPUS CH	11/23/14		11	3-4	.750	0-1	.000	0-0	.000	1	1	2	2.0	0	2	0	0	0	6	2.0	
NORTH CAROLINA A&T	11/25/14		23	1-3	.333	0-0	.000	0-0	.000	1	0	1	1.8	2	0	0	0	3	2	2.0	
vs Mississippi State	11/28/14	*	14	1-5	.200	0-2	.000	0-0	.000	1	1	2	1.8	0	0	0	0	0	2	2.0	
vs Bradley	11/29/14	dnp		-	-	-	-	-	-	-	-	-	-	-	-	-	-	-	-	-	
ROCKHURST	12/02/14		8	2-3	.667	1-1	1.000	0-0	.000	0	0	0	1.5	0	0	0	0	1	5	2.5	
at Wichita State	12/06/14		4	0-1	.000	0-1	.000	0-0	.000	0	0	0	1.3	0	0	1	0	0	0	2.1	
SOUTH DAKOTA STATE	12/09/14		9	2-3	.667	0-0	.000	1-2	.500	0	1	1	1.3	1	0	0	0	0	5	2.5	
SIUE	12/13/14		11	2-2	1.000	0-0	.000	1-3	.333	0	1	1	1.2	1	3	1	0	0	5	2.8	
TEXAS PAN-AMERICAN	12/17/14		13	0-1	.000	0-0	.000	0-0	.000	0	1	1	1.2	0	0	0	1	1	0	2.5	
VERMONT	12/21/14		11	1-2	.500	0-1	.000	0-1	.000	0	1	1	1.2	1	1	3	0	1	2	2.5	
Totals			3	127	12-27	.444	1-8	.125	2-6	.333	3	10	13	1.2	7	7	5	1	6	27	2.5

Games played: 11
Minutes/game: 11.5
Points/game: 2.5
FG Pct: 44.4
3FG Pct: 12.5
FT Pct: 33.3

Rebounds/game: 1.2
Assists/game: 0.6
Turnovers/game: 0.5
Assist/turnover ratio: 1.4
Steals/game: 0.5
Blocks/game: 0.1

LANCONA'S CAREER STATISTICS

Season	gp-gs	min/avg	Total		3-Point		F-Throws		Rebounds				Scoring							
			fg-fga	pct	fg-fga	pct	ft-fa	pct	off	def	tot	avg	pf	fo	ast	to	blk	stl	pts	avg
2013-14	21-0	179/8.5	17-36	.472	5-14	.357	10-14	.714	8	21	29	1.4	21	0	4	7	3	4	49	2.3
2014-15	11-3	127/11.5	12-27	.444	1-8	.125	2-6	.333	3	10	13	1.2	7	0	7	5	1	6	27	2.5
TOTAL	32-3	306/9.6	29-63	.460	6-22	.273	12-20	.600	11	31	42	1.3	28	0	11	12	4	10	76	2.4



54 • JOHN MANNING



Senior • Center • 6-11 • 250 • Chantilly, Va. • Chantilly HS | MAJOR: Criminal Justice

SEASON HIGHLIGHTS

► Scored eight points in the win against UTPA ... had six points, six rebounds, three assists and four blocks against SIUE ... scored six points and brought down six rebounds against South Dakota State ... was highly effective late in the game against North Carolina A&T ... posted three blocks and brought down four rebounds in the win ... hit a pair of free throws, grabbed a rebound and blocked a shot in 13 minutes against SIU.

► 2013-14 • JUNIOR

Played in all but two games ... averaged 2.5 ppg ... second on the team with 33 blocked shots, the fourth most in a single season by a junior in SLU history ... finished one point off his career high with eight points in the UMass win, which clinched the A-10 regular-season title for the Billikens.

► 2012-13 • SOPHOMORE

Played in 25 games ... scored 1.7 ppg and shot 45.7 percent (16-of-35) from the field ... eclipsed his career scoring high in four straight games, ending with nine against Eastern Illinois ... was a combined 5-of-5 from the field against EIU and Loyola Marymount ... scored five points against Valpo ... followed that performance with six point against North Texas, then registered eight points versus UT Martin.

► 2011-12 • FRESHMAN

Appeared in 12 games ... was 2-of-3 from the field and hit a pair of free throws for six points ... recorded 12 rebounds and five blocked shots.

Prep

Averaged more than 12 ppg and shot 68 percent from the field his senior year at Chantilly High School ... helped the Chargers to a Northern Region appearance ... McDonald's All-America nominee ... All-Met fourth-team selection by The Washington Post ... averaged nearly 11 points per contest as a junior as his team advanced to the Virginia Class AAA state semifinals ... was a three-star recruit by Rivals.com and the 40th-ranked center in the country by ESPN.com at the time of his signing ... played AAU ball for Team Takeover out of Washington, D.C.

SEASON/CAREER HIGHS

POINTS

SEASON: 8 vs. UTPA, 12/17/14
CAREER: 9, twice

REBOUNDS

SEASON: 6, twice
CAREER: 6, twice

ASSISTS

SEASON: 3 vs. SIUE, 12/13/14
CAREER: 3 vs. SIUE, 12/13/14

STEALS

SEASON: 1, twice
CAREER: 2, four times

BLOCKS

SEASON: 4 vs. SIUE, 12/13/14
CAREER: 4, twice

FIELD GOALS MADE

SEASON: 2, three times
CAREER: 3, six times

FIELD GOAL ATTEMPTS

SEASON: 5 vs. SDSU, 12/9/14
CAREER: 6 vs. UT Martin, 12/15/12

3-PT. FIELD GOALS MADE

SEASON: 1 at Wichita State, 12/6/14
CAREER: 1 vs. Wofford, 12/14/13

3-PT. FIELD GOALS ATTEMPTED

SEASON: 1 at Wichita State, 12/6/14
CAREER: 1, four times

FREE THROWS MADE

SEASON: 4 vs. UTPA, 12/17/14
CAREER: 4 vs. UTPA, 12/17/14

FREE THROWS ATTEMPTED

SEASON: 4 vs. UTPA, 12/17/14
CAREER: 4, twice

MINUTES PLAYED

SEASON: 24 at Wichita St., 12/6/14
CAREER: 24 at Wichita St., 12/6/14

MANNING'S 2014-15 GAME-BY-GAME STATS

Opponent	Date	gs	min	Total		3-Pointers		Free throws		Rebounds			pf	a	t/o	blk	stl	pts	avg		
				fg-fga	pct	3fg-fga	pct	ft-fa	pct	off	def	tot								avg	
SOUTHERN ILLINOIS	11/15/14	*	13	0-0	.000	0-0	.000	2-2	1.000	0	1	1	1.0	1	0	1	1	0	2	2.0	
at Indiana State	11/18/14	*	12	1-3	.333	0-0	.000	1-2	.500	0	2	2	1.5	2	0	1	0	1	3	2.5	
TEXAS A&M-CORPUS CH	11/23/14	*	16	0-2	.000	0-0	.000	2-2	1.000	0	1	1	1.3	2	0	0	1	0	2	2.3	
NORTH CAROLINA A&T	11/25/14	*	17	1-1	1.000	0-0	.000	1-2	.500	1	3	4	2.0	1	0	0	3	0	3	2.5	
vs Mississippi State	11/28/14	*	15	1-4	.250	0-0	.000	0-0	.000	1	0	1	1.8	0	1	1	1	0	2	2.4	
vs Bradley	11/29/14		dnp	-	-	-	-	-	-	-	-	-	-	-	-	-	-	-	-	-	
ROCKHURST	12/02/14	*	7	0-1	.000	0-0	.000	0-0	.000	0	1	1	1.7	1	0	0	1	0	0	2.0	
at Wichita State	12/06/14	*	24	1-4	.250	0-1	.000	0-0	.000	0	2	2	1.7	3	0	0	2	0	2	2.0	
SOUTH DAKOTA STATE	12/09/14	*	13	2-5	.400	0-0	.000	2-2	1.000	5	1	6	2.3	3	0	1	0	0	6	2.5	
SIUE	12/13/14	*	23	2-3	.667	0-0	.000	2-2	1.000	0	6	6	2.7	2	3	0	4	0	6	2.9	
TEXAS PAN-AMERICAN	12/17/14	*	21	2-3	.667	0-0	.000	4-4	1.000	0	2	2	2.6	3	1	0	0	1	8	3.4	
VERMONT	12/21/14	*	19	1-3	.333	0-0	.000	0-0	.000	0	4	4	2.7	3	2	0	1	1	2	3.3	
Totals			9	180	11-29	.379	0-1	.000	14-16	.875	7	23	30	2.7	21	7	4	14	3	36	3.3

Games played: 11
Minutes/game: 16.4
Points/game: 3.3
FG Pct: 37.9
3FG Pct: 0.0
FT Pct: 87.5

Rebounds/game: 2.7
Assists/game: 0.6
Turnovers/game: 0.4
Assist/turnover ratio: 1.8
Steals/game: 0.3
Blocks/game: 1.3

MANNING'S CAREER STATISTICS

Season	gp-gs	min/avg	Total		3-Point		F-Throws		Rebounds				Scoring							
			fg-fga	pct	fg-fga	pct	ft-fa	pct	off	def	tot	avg	pf	fo	ast	to	blk	stl	pts	avg
2011-12	12-0	47/3.9	2-3	.667	0-0	.000	2-6	.333	3	9	12	1.0	9	0	0	5	5	0	6	0.5
2012-13	25-0	142/5.7	16-35	.457	0-0	.000	11-19	.579	3	12	15	0.6	21	1	4	8	10	2	43	1.7
2013-14	32-0	380/11.9	32-62	.516	1-4	.250	16-31	.516	19	31	50	1.6	54	1	7	18	33	10	81	2.5
2014-15	11-9	180/16.4	11-29	.379	0-1	.000	14-16	.875	7	23	30	2.7	21	0	7	4	14	3	36	3.3
TOTAL	80-9	749/9.4	61-129	.473	1-5	.200	43-72	.597	32	75	107	1.3	105	2	18	35	62	15	166	2.1



2 • AUSTIN MCBROOM



Junior • Guard • 5-9 • 165 • Los Angeles, Calif. • Central Michigan | MAJOR: Communication

SEASON HIGHLIGHTS

► Nailed three treys, including two big ones in the second half, en route to 12 points vs. UTPA ... led the Bills with 13 points against SIUE thanks in part to a 3-of-4 shooting effort from 3-point range ... recorded a season-high four assists and tied a career best with three steals against South Dakota State ... registered a career-high 26 points against Bradley, connecting on a career-best six 3-pointers ... buried the game-winning shot with seven seconds left ... scored 15 points, including the go-ahead 3-pointer with less than three minutes to play, in the win against North Carolina A&T ... recorded 24 points, including a 3-pointer with 10 seconds remaining, to lift the Billikens to a season-opening win against Southern Illinois ... was 5-of-7 from beyond the arc and 7-of-10 from the charity stripe against the Salukis.

► 2013-14 • SOPHOMORE

Played in all 34 games, starting once ... finished fifth on the squad in scoring with 7.3 ppg ... was the Billikens' top 3-point shooter in makes (44) and percentage (.349) ... shot 90.3 percent (56-62) from the free-throw line, the second-best percentage in a single season in school history ... connected on 32-of-34 from the charity stripe during A-10 play ... scored 8.1 ppg during the conference season ... drained three 3-pointers en route to a SLU season best 17 points in the win at Dayton ... also was 6-of-6 from the free-throw line against the Flyers.

2011-12 • FRESHMAN | AT CENTRAL MICHIGAN

Named to the Mid-American Conference All-Freshman team after averaging 10.9 ppg and a team-best 2.7 assists per game ... started 30 of 31 games for the Chippewas ... one of the squad's top 3-point shooters, nailing 56 treys while shooting 42 percent from the arc ... finished second in the league in scoring among freshmen ... his free-throw mark of 86 percent in league games ranked second in the MAC.

PREP

Heralded three-sport athlete at Campbell Hall School in North Hollywood, Calif., also playing football and baseball ... averaged 25.1 ppg his senior season en route to being named first-team All-CIF Division 3AA ... All-State selection in both basketball and football ... as a freshman, played on the Vikings' state championship team that also featured current New Orleans Pelican Jrue Holiday ... was a slot receiver/kick returner on the football team and played shortstop on the baseball squad.

SEASON/CAREER HIGHS

POINTS

SEASON: 26 vs. Bradley, 11/29/14
CAREER: 26 vs. Bradley, 11/29/14

REBOUNDS

SEASON: 5 vs. SIU, 11/15/14
CAREER: 6 vs. Wisconsin, 11/26/13

ASSISTS

SEASON: 4 vs. SDSU, 12/9/14
CAREER: 6 vs. Ind. State, 12/18/13

STEALS

SEASON: 3, twice
CAREER: 3, four times

BLOCKS

SEASON:
CAREER:

FIELD GOALS MADE

SEASON: 10 vs. Bradley, 11/29/14
CAREER: 10 vs. Bradley, 11/29/14

FIELD GOAL ATTEMPTS

SEASON: 14, twice
CAREER: 14, twice

3-PT. FIELD GOALS MADE

SEASON: 6 vs. Bradley, 11/29/14
CAREER: 6 vs. Bradley, 11/29/14

3-PT. FIELD GOALS ATTEMPTED

SEASON: 9 vs. Bradley, 11/29/14
CAREER: 9 vs. Bradley, 11/29/14

FREE THROWS MADE

SEASON: 7 vs. SIU, 11/15/14
CAREER: 7 vs. SIU, 11/15/14

FREE THROWS ATTEMPTED

SEASON: 10 vs. SIU, 11/15/14
CAREER: 10 vs. SIU, 11/15/14

MINUTES PLAYED

SEASON: 35, twice
CAREER: 35, twice

MCBROOM'S 2014-15 GAME-BY-GAME STATS

Opponent	Date	gs	min	Total		3-Pointers		Free throws		Rebounds				pf	a	t/o	blk	stl	pts	avg	
				fg-fga	pct	3fg-fga	pct	ft-fga	pct	off	def	tot	avg								
SOUTHERN ILLINOIS	11/15/14	*	35	6-14	.429	5-7	.714	7-10	.700	1	4	5	5.0	1	1	3	0	1	24	24.0	
at Indiana State	11/18/14	*	26	1-8	.125	1-3	.333	2-2	1.000	0	1	1	3.0	3	3	1	0	0	5	14.5	
TEXAS A&M-CORPUS CH	11/23/14	*	28	3-11	.273	0-4	.000	2-2	1.000	0	2	2	2.7	0	3	3	0	1	8	12.3	
NORTH CAROLINA A&T	11/25/14	*	29	4-8	.500	4-6	.667	3-4	.750	0	1	1	2.3	2	0	3	0	1	15	13.0	
vs Mississippi State	11/28/14	*	27	4-13	.308	2-7	.286	0-0	.000	0	3	3	2.4	1	1	1	0	2	10	12.4	
vs Bradley	11/29/14	*	35	9-14	.643	6-9	.667	2-3	.667	1	0	1	2.2	1	2	1	0	2	26	14.7	
ROCKHURST	12/02/14	*	18	2-6	.333	0-2	.000	0-0	.000	1	1	2	2.1	1	2	2	0	1	4	13.1	
at Wichita State	12/06/14	*	14	0-4	.000	0-1	.000	3-4	.750	1	0	1	2.0	0	0	0	0	0	3	11.9	
SOUTH DAKOTA STATE	12/09/14	*	31	1-7	.143	0-2	.000	0-0	.000	2	0	2	2.0	1	4	3	0	3	2	10.8	
SIUE	12/13/14	*	23	4-6	.667	3-4	.750	2-2	1.000	0	0	0	1.8	1	2	0	0	3	13	11.0	
TEXAS PAN-AMERICAN	12/17/14	*	30	4-8	.500	3-4	.750	1-2	.500	0	2	2	1.8	1	2	0	0	1	12	11.1	
VERMONT	12/21/14	*	26	4-7	.571	1-2	.500	0-0	.000	0	0	0	1.7	0	1	1	0	1	9	10.9	
Totals			12	322	42-106	.396	25-51	.490	22-29	.759	6	14	20	1.7	12	21	18	0	16	131	10.9

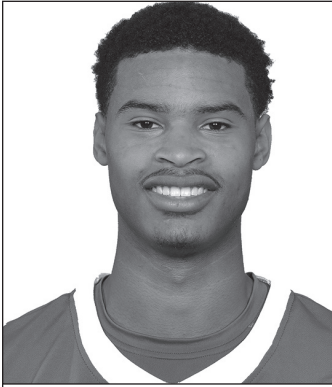
Games played: 12
Minutes/game: 26.8
Points/game: 10.9
FG Pct: 39.6
3FG Pct: 49.0
FT Pct: 75.9

Rebounds/game: 1.7
Assists/game: 1.8
Turnovers/game: 1.5
Assist/turnover ratio: 1.2
Steals/game: 1.3

MCBROOM'S CAREER STATISTICS

*at Central Michigan
TOTAL is SLU Only
All* is entire collegiate career

Season	gp-gs	min/avg	Total		3-Point		F-Throws			Rebounds				Scoring						
			fg-fga	pct	fg-fga	pct	ft-fga	pct	off	def	tot	avg	pf	fo	ast	to	blk	stl	pts	avg
2011-12*	31-29	452/14.6	106-268	.396	56-133	.421	71-87	.816	14	59	73	2.4	61	0	85	65	2	28	339	10.9
2013-14	34-1	730/21.5	74-210	.352	44-126	.349	56-62	.903	16	49	65	1.9	54	0	56	45	1	23	248	7.3
2014-15	12-12	322/26.8	42-106	.396	25-51	.490	22-29	.759	6	14	20	1.7	12	0	21	18	0	16	131	10.9
TOTAL	46-13	1052/22.9	116-316	.367	69-177	.390	78-91	.857	22	63	85	1.8	66	0	77	63	1	39	379	8.2
All*	77-42	1504/19.5	222-584	.380	125-310	.403	149-178	.837	36	122	158	2.1	127	0	162	128	3	67	718	9.3



11 • MILES REYNOLDS



Freshman • Guard • 6-2 • 170 • Chicago, Ill. • Whitney Young | MAJOR: Business Administration

SEASON HIGHLIGHTS

► Went 3-for-3 from the line against SIUE ... led the team in scoring with 14 points in the win against Rockhurst ... did it all in the win against North Carolina A&T, scoring a career-high 19 points while adding two assists, three rebounds and three steals ... was 14-of-18 from the charity stripe against the Aggies ... scored five points in just nine minutes of action against Texas A&M-Corpus Christi ... drained the Billikens' first two buckets of the game against Indiana State ... ended up with seven points against the Sycamores ... grabbed a pair of rebounds in 11 minutes of action against Southern Illinois.

PREVIOUS

Prepped at Whitney Young Magnet High School in Chicago, one of the top prep teams in the country ... earned honorable mention All-State honors from the Associated Press ... collected a special mention All-State nod from the Chicago Tribune ... led the Dolphins (29-5) to the Class 4A state title with a team-high 19 points against Benet ... was prep teammates with fellow NCAA Division I signees Jahlil Okafor (Duke) and Paul White (Georgetown).

SEASON/CAREER HIGHS

POINTS

SEASON: 19 vs. NCAT, 11/25/14
CAREER: 19 vs. NCAT, 11/25/14

REBOUNDS

SEASON: 3, four times
CAREER: 3, four times

ASSISTS

SEASON: 2 vs. NCAT, 11/25/14
CAREER: 2 vs. NCAT, 11/25/14

STEALS

SEASON: 3, twice
CAREER: 3, twice

BLOCKS

SEASON: 1 vs. Vermont, 12/21/14
CAREER: 1 vs. Vermont, 12/21/14

FIELD GOALS MADE

SEASON: 3 vs. Rockhurst, 12/2/14
CAREER: 3 vs. Rockhurst, 12/2/14

FIELD GOAL ATTEMPTS

SEASON: 5, twice
CAREER: 5, twice

3-PT. FIELD GOALS MADE

SEASON: 1, twice
CAREER: 1, twice

3-PT. FIELD GOALS ATTEMPTED

SEASON: 2, twice
CAREER: 2, twice

FREE THROWS MADE

SEASON: 14 vs. NCAT, 11/25/14
CAREER: 14 vs. NCAT, 11/25/14

FREE THROWS ATTEMPTED

SEASON: 18 vs. NCAT, 11/25/14
CAREER: 18 vs. NCAT, 11/25/14

MINUTES PLAYED

SEASON: 25 vs. Rockhurst, 12/2/14
CAREER: 25 vs. Rockhurst, 12/2/14

REYNOLDS' 2014-15 GAME-BY-GAME STATS

Opponent	Date	gs	min	Total		3-Pointers		Free throws		Rebounds				pf	a	t/o	blk	stl	pts	avg
				fg-fga	pct	3fg-fga	pct	ft-fa	pct	off	def	tot	avg							
SOUTHERN ILLINOIS	11/15/14	11	0-0	.000	0-0	.000	0-1	.000	0	2	2	2.0	1	1	1	0	0	0	0	0.0
at Indiana State	11/18/14	16	2-5	.400	0-1	.000	3-4	.750	0	1	1	1.5	2	1	0	0	0	7	3.5	
TEXAS A&M-CORPUS CH	11/23/14	9	1-2	.500	0-0	.000	3-3	1.000	0	1	1	1.3	2	1	1	0	0	5	4.0	
NORTH CAROLINA A&T	11/25/14	21	2-4	.500	1-2	.500	14-18	.778	0	3	3	1.8	0	2	2	0	3	19	7.8	
vs Mississippi State	11/28/14	13	0-3	.000	0-1	.000	2-4	.500	0	3	3	2.0	1	0	1	0	0	2	6.6	
vs Bradley	11/29/14	16	0-4	.000	0-1	.000	0-0	.000	0	3	3	2.2	2	1	2	0	0	0	5.5	
ROCKHURST	12/02/14	25	3-5	.600	1-2	.500	7-9	.778	0	3	3	2.3	2	3	0	0	3	14	6.7	
at Wichita State	12/06/14	22	0-4	.000	0-1	.000	6-8	.750	0	0	0	2.0	2	1	2	0	1	6	6.6	
SOUTH DAKOTA STATE	12/09/14	8	0-2	.000	0-2	.000	0-0	.000	0	0	0	1.8	5	1	3	0	1	0	5.9	
SIUE	12/13/14	12	1-1	1.000	0-0	.000	3-3	1.000	0	1	1	1.7	0	0	1	0	1	5	5.8	
TEXAS PAN-AMERICAN	12/17/14	2	0-1	.000	0-1	.000	0-0	.000	0	0	0	1.5	0	0	0	0	0	0	5.3	
VERMONT	12/21/14	4	0-1	.000	0-0	.000	0-0	.000	2	1	3	1.7	0	0	0	1	0	0	4.8	
Totals		0	159	9-32	.281	2-11	.182	38-50	.760	2	18	20	1.7	17	11	13	1	9	58	4.8

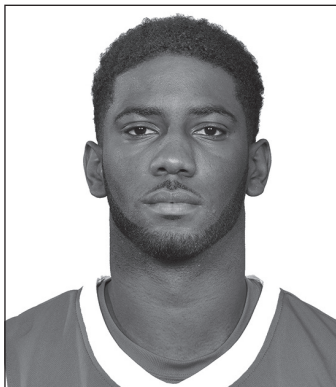
Games played: 12
Minutes/game: 13.3
Points/game: 4.8
FG Pct: 28.1
3FG Pct: 18.2
FT Pct: 76.0

Rebounds/game: 1.7
Assists/game: 0.9
Turnovers/game: 1.1
Assist/turnover ratio: 0.8
Steals/game: 0.8
Blocks/game: 0.1

REYNOLDS' CAREER STATISTICS

Season	gp-gs	min/avg	Total		3-Point		F-Throws		Rebounds				Scoring							
			fg-fga	pct	fg-fga	pct	ft-fa	pct	off	def	tot	avg	pf	fo	ast	to	blk	stl	pts	avg
2014-15	12-0	159/13.3	9-32	.281	2-11	.182	38-50	.760	2	18	20	1.7	17	1	11	13	1	9	58	4.8
TOTAL	12-0	159/13.3	9-32	.281	2-11	.182	38-50	.760	2	18	20	1.7	17	1	11	13	1	9	58	4.8

@SaintLouisMBB | Three straight NCAA Tournament Appearances



5 • DAVELL ROBY



Freshman • Guard • 6-4 • 200 • Memphis, Tenn. • White Station | MAJOR: Undecided

SEASON HIGHLIGHTS

► Posted two steals and dished out three assists against South Dakota State ... scored a career-high 10 points against Rockhurst ... hit both of his shots from beyond the arc against the Hawks ... started and played 20 minutes in the season opener against Southern Illinois ... dished out a team-best three assists ... scored four points ... stole the long inbound pass as time expired to seal the win for the Billikens.

PREVIOUS

Product of White Station High School in Memphis, Tenn. ... also played for the Team Penny AAU program where he averaged nearly 10 points in helping the squad qualify for the Peach Jam.

SEASON/CAREER HIGHS

POINTS

SEASON: 10 vs. Rockhurst, 12/2/14
 CAREER: 10 vs. Rockhurst, 12/2/14

REBOUNDS

SEASON: 5, twice
 CAREER: 5, twice

ASSISTS

SEASON: 4, twice
 CAREER: 4, twice

STEALS

SEASON: 2, twice
 CAREER: 2, twice

BLOCKS

SEASON:
 CAREER:

FIELD GOALS MADE

SEASON: 3 vs. Rockhurst, 12/2/14
 CAREER: 3 vs. Rockhurst, 12/2/14

FIELD GOAL ATTEMPTS

SEASON: 5, three times
 CAREER: 5, three times

3-PT. FIELD GOALS MADE

SEASON: 2, twice
 CAREER: 2, twice

3-PT. FIELD GOALS ATTEMPTED

SEASON: 3, twice
 CAREER: 3, twice

FREE THROWS MADE

SEASON: 2, twice
 CAREER: 2, twice

FREE THROWS ATTEMPTED

SEASON: 3 vs. Vermont, 12/21/14
 CAREER: 3 vs. Vermont, 12/21/14

MINUTES PLAYED

SEASON: 26 vs. TAMCC, 11/23/14
 CAREER: 26 vs. SIU, 11/23/14

ROBY'S 2014-15 GAME-BY-GAME STATS

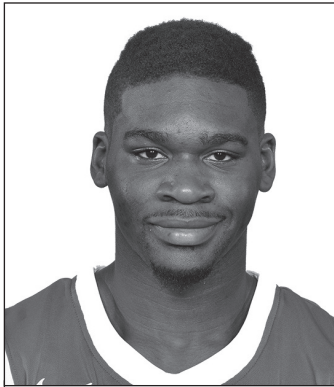
Opponent	Date	gs	min	Total		3-Pointers		Free throws		Rebounds				pf	a	t/o	blk	stl	pts	avg	
				fg-fga	pct	3fg-fga	pct	ft-fta	pct	off	def	tot	avg								
SOUTHERN ILLINOIS	11/15/14	*	20	1-5	.200	1-2	.500	1-1	1.000	0	0	0	0.0	3	3	1	0	1	4	4.0	
at Indiana State	11/18/14	*	12	0-3	.000	0-0	.000	0-0	.000	3	2	5	2.5	2	2	2	0	0	0	2.0	
TEXAS A&M-CORPUS CH	11/23/14	*	26	2-5	.400	2-3	.667	0-1	.000	0	5	5	3.3	2	4	1	0	2	6	3.3	
NORTH CAROLINA A&T	11/25/14	*	13	0-3	.000	0-1	.000	0-0	.000	2	1	3	3.3	2	1	1	0	0	0	2.5	
vs Mississippi State	11/28/14	*	13	1-3	.333	1-3	.333	0-2	.000	0	1	1	2.8	1	0	1	0	0	3	2.6	
vs Bradley	11/29/14	dnp	-	-	-	-	-	-	-	-	-	-	-	-	-	-	-	-	-	-	
ROCKHURST	12/02/14	18	3-5	.600	2-2	1.000	2-2	1.000	0	4	4	3.0	0	1	3	0	0	10	3.8		
at Wichita State	12/06/14	*	23	1-3	.333	0-0	.000	0-0	.000	0	2	2	2.9	1	4	1	0	1	2	3.6	
SOUTH DAKOTA STATE	12/09/14	*	25	0-3	.000	0-2	.000	3-3	1.000	0	1	1	2.6	1	3	0	0	2	3	3.5	
SIUE	12/13/14	*	19	0-2	.000	0-0	.000	1-2	.500	1	3	4	2.8	1	2	4	0	0	1	3.2	
TEXAS PAN-AMERICAN	12/17/14	*	18	0-5	.000	0-3	.000	0-0	.000	0	3	3	2.8	1	3	2	0	0	0	2.9	
VERMONT	12/21/14	*	21	1-1	1.000	1-1	1.000	2-3	.667	0	1	1	2.6	3	1	1	0	0	5	3.1	
Totals			10	208	9-38	.237	7-17	.412	9-14	.643	6	23	29	2.6	17	24	17	0	6	34	3.1

Games played: 11
 Minutes/game: 18.9
 Points/game: 3.1
 FG Pct: 23.7
 3FG Pct: 41.2
 FT Pct: 64.3

Rebounds/game: 2.6
 Assists/game: 2.2
 Turnovers/game: 1.5
 Assist/turnover ratio: 1.4
 Steals/game: 0.5

ROBY'S CAREER STATISTICS

Season	gp-gs	min/avg	Total		3-Point		F-Throws		Rebounds				Scoring							
			fg-fga	pct	fg-fga	pct	ft-fta	pct	off	def	tot	avg	pf	fo	ast	to	blk	stl	pts	avg
2014-15	11-10	208/18.9	9-38	.237	7-17	.412	9-14	.643	6	23	29	2.6	17	0	24	17	0	6	34	3.1
TOTAL	11-10	208/18.9	9-38	.237	7-17	.412	9-14	.643	6	23	29	2.6	17	0	24	17	0	6	34	3.1



3 • ASH YACOUBOU



Junior • Guard • 6-4 • 210 • Bronx, N.Y. • Villanova | MAJOR: Communication

SEASON HIGHLIGHTS

► Scored a career-high 17 points in the win against UTPA ... registered 10 points in the win against SIUE ... was a perfect 4-of-4 from the charity stripe against the Cougars ... tied his career high with three steals against South Dakota State ... recorded the first double-double of his career with 11 points and 10 rebounds against Rockhurst ... led the team in scoring with 13 points on 6-of-12 shooting against Texas A&M-Corpus Christi ... tallied 15 points, thanks in part to a 7-of-9 effort from the free-throw line, and grabbed a team-high seven rebounds in the win against Indiana State ... opened his SLU career with a 12-point effort against Southern Illinois ... pulled down a team-high seven rebounds.

2012-13 • SOPHOMORE | AT VILLANOVA

Led Villanova in 3-point shooting percentage, nailing 39.6 percent (21-53) of his shots from beyond the arc ... registered a career-high 13 points in a win against Penn and followed with nine points and seven boards against Saint Joseph's ... his 3-pointer late in the game against Louisville helped propel the Wildcats to a nine-point victory against the eventual national champions.

2011-12 • FRESHMAN | AT VILLANOVA

Scored 2.2 ppg while appearing in 26 games. He played eight minutes against the Billikens at the 76 Classic in Anaheim.

PREVIOUS

Named 2011 Gatorade New York State Player of the Year coming out of Long Island Lutheran ... as a senior, averaged 19.0 ppg and 9.0 rpg ... helped the Crusaders capture the Class A Federation state title as a sophomore ... began his prep career at American Christian School in Pennsylvania before relocating to Long Island Lutheran.

SEASON/CAREER HIGHS

POINTS

SEASON: 17 vs. UTPA, 12/17/14
CAREER: 17 vs. UTPA, 12/17/14

REBOUNDS

SEASON: 10 vs. Rockhurst, 12/2/14
CAREER: 10 vs. Rockhurst, 12/2/14

ASSISTS

SEASON: 3, twice
CAREER: 3, twice

STEALS

SEASON: 3, twice
CAREER: 3, twice

BLOCKS

SEASON: 1, twice
CAREER: 1, twice

FIELD GOALS MADE

SEASON: 6, twice
CAREER: 6, twice

FIELD GOAL ATTEMPTS

SEASON: 14 vs. Vermont, 12/21/14
CAREER: 14 vs. Vermont, 12/21/14

3-PT. FIELD GOALS MADE

SEASON: 1, three times
CAREER: 1, three times

3-PT. FIELD GOALS ATTEMPTED

SEASON: 3, three times
CAREER: 3, three times

FREE THROWS MADE

SEASON: 7 at Indiana St., 11/18/14
CAREER: 7 at Indiana St., 11/18/14

FREE THROWS ATTEMPTED

SEASON: 9 at Indiana St., 11/18/14
CAREER: 9 at Indiana St., 11/18/14

MINUTES PLAYED

SEASON: 31 vs. UTPA, 12/17/14
CAREER: 31 vs. UTPA, 12/17/14

YACOUBOU'S 2014-15 GAME-BY-GAME STATS

Opponent	Date	gs	min	Total		3-Pointers		Free throws		Rebounds				pf	a	t/o	blk	stl	pts	avg	
				fg-fga	pct	3fg-fga	pct	ft-fa	pct	off	def	tot	avg								
SOUTHERN ILLINOIS	11/15/14	*	23	3-7	.429	0-1	.000	6-7	.857	3	4	7	7.0	3	1	3	1	0	12	12.0	
at Indiana State	11/18/14	*	22	4-13	.308	0-2	.000	7-9	.778	3	4	7	7.0	3	0	0	0	0	15	13.5	
TEXAS A&M-CORPUS CH	11/23/14	*	29	6-12	.500	1-2	.500	0-2	.000	1	4	5	6.3	1	2	3	0	2	13	13.3	
NORTH CAROLINA A&T	11/25/14	*	25	3-10	.300	0-3	.000	0-2	.000	1	4	5	6.0	2	2	4	0	0	6	11.5	
vs Mississippi State	11/28/14	*	17	4-6	.667	0-1	.000	0-2	.000	1	2	3	5.4	2	0	2	0	0	8	10.8	
vs Bradley	11/29/14	*	23	1-4	.250	0-2	.000	0-0	.000	0	1	1	4.7	3	1	3	0	2	2	9.3	
ROCKHURST	12/02/14	*	22	4-10	.400	1-3	.333	2-4	.500	2	8	10	5.4	2	2	0	0	3	11	9.6	
at Wichita State	12/06/14	*	16	1-3	.333	0-0	.000	0-0	.000	0	1	1	4.9	1	0	2	0	0	2	8.6	
SOUTH DAKOTA STATE	12/09/14	*	30	2-8	.250	0-2	.000	2-2	1.000	1	2	3	4.7	5	0	0	0	3	6	8.3	
SIUE	12/13/14	*	25	3-7	.429	0-1	.000	4-4	1.000	0	0	0	4.2	2	0	1	1	1	10	8.5	
TEXAS PAN-AMERICAN	12/17/14	*	31	6-9	.667	1-3	.333	4-5	.800	2	6	8	4.5	4	3	1	0	1	17	9.3	
VERMONT	12/21/14	*	30	4-14	.286	0-2	.000	2-2	1.000	3	4	7	4.8	2	3	2	0	1	10	9.3	
Totals			12	293	41-103	.398	3-22	.136	27-39	.692	17	40	57	4.8	30	14	21	2	13	112	9.3

Games played: 12
Minutes/game: 24.4
Points/game: 9.3
FG Pct: 39.8
3FG Pct: 13.6
FT Pct: 69.2
Rebounds/game: 4.8
Assists/game: 1.2
Turnovers/game: 1.8
Assist/turnover ratio: 0.7
Steals/game: 1.1
Blocks/game: 0.2

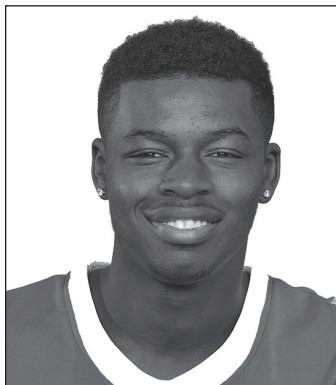
YACOUBOU'S CAREER STATISTICS

*at Villanova
TOTAL is SLU career only
All* is entire collegiate career

Season	gp-gs	min/avg	Total		3-Point		F-Throws		Rebounds				Scoring							
			fg-fga	pct	fg-fga	pct	ft-fa	pct	off	def	tot	avg	pf	fo	ast	to	blk	stl	pts	avg
2011-12*	26-3	276/10.6	19-58	.328	11-42	.262	8-8	1.000	2	31	33	1.3	17	0	7	9	2	3	57	2.2
2012-13*	31-0	371/12.0	33-79	.418	21-53	.396	4-8	.500	21	60	81	2.6	37	0	17	27	1	10	91	2.9
2014-15	12-12	293/24.4	41-103	.398	3-22	.136	27-39	.692	17	40	57	4.8	30	1	14	21	2	13	112	9.3
TOTAL	12-12	293/24.4	41-103	.398	3-22	.136	27-39	.692	17	40	57	4.8	30	1	14	21	2	13	112	9.3
All*	69-15	940/13.6	93-240	.388	35-117	.299	39-55	.709	40	131	171	2.5	84	1	38	57	5	26	260	3.8

@SaintLouisMBB | Three straight NCAA Tournament Appearances

4 • MILIK YARBROUGH



Freshman • Forward • 6-6 • 230 • Zion, Ill. • Zion-Benton Township | MAJOR: Communication

SEASON HIGHLIGHTS

► Tallied a career-high 13 rebounds against Vermont and added 10 points for the first double-double of his collegiate career ... also had a season-team-high six assists against the Catamounts ... had eight points and three assists against UTPA ... scored eight points in the victory against SIUE ... scored a career-best 15 points and was one rebound shy of a double-double with a career-best nine boards against South Dakota State ... hit all four of his shots from the field against Bradley en route to 10 points ... also corralled four rebounds against the Braves ... was the top Billiken freshman in scoring against Indiana State with 11 points ... was 5-of-6 from the field and also pulled down five rebounds against the Sycamores ... led the Billiken freshmen with five rebounds against Southern Illinois ... also scored his first collegiate points in the game against the Salukis.

PREVIOUS

Four-year starter at Zion-Benton Township High School in Zion, Ill., a northern suburb of Chicago ... collected more than 2,600 points, making him the all-time leading boys' basketball scorer in Lake County history ... averaged 25.4 points, 8.8 rebounds and 4.7 assists for the Zee-Bees, who posted a 26-4 record ... first-team All-State selection by the News-Gazette ... collected second-team All-State plaudits from the Associated Press and Chicago Tribune ... three-time Illinois Basketball Coaches Association (IBCA) All-State selection ... registered All-Conference honors all four years of high school.

SEASON/CAREER HIGHS

POINTS

SEASON: 12 vs. Rockhurst, 12/2/14
CAREER: 12 vs. Rockhurst, 12/2/14

REBOUNDS

SEASON: 13 vs. Vermont, 12/21/14
CAREER: 13 vs. Vermont, 12/21/14

ASSISTS

SEASON: 6 vs. Vermont, 12/21/14
CAREER: 6 vs. Vermont, 12/21/14

STEALS

SEASON: 2 vs. Miss. St., 11/28/14
CAREER: 2 vs. Miss. St., 11/28/14

BLOCKS

SEASON: 2 at Wichita St., 12/6/14
CAREER: 2 at Wichita St., 12/6/14

FIELD GOALS MADE

SEASON: 6 vs. SDSU, 12/9/14
CAREER: 6 vs. SDSU, 12/9/14

FIELD GOAL ATTEMPTS

SEASON: 13 vs. Vermont, 12/21/14
CAREER: 13 vs. Vermont, 12/21/14

3-PT. FIELD GOALS MADE

SEASON: 1 at Wichita St., 12/6/14
CAREER: 1 at Wichita St., 12/6/14

3-PT. FIELD GOALS ATTEMPTED

SEASON: 3 vs. SDSU, 12/9/14
CAREER: 3 vs. SDSU, 12/9/14

FREE THROWS MADE

SEASON: 4 vs. UTPA, 12/17/14
CAREER: 4 vs. UTPA, 12/17/14

FREE THROWS ATTEMPTED

SEASON: 7 vs. UTPA, 12/17/14
CAREER: 7 vs. UTPA, 12/17/14

MINUTES PLAYED

SEASON: 26 vs. Rockhurst, 12/2/14
CAREER: 26 vs. Rockhurst, 12/2/14

YARBROUGH'S 2014-15 GAME-BY-GAME STATS

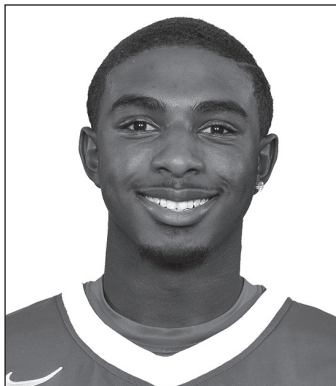
Opponent	Date	gs	min	Total		3-Pointers		Free throws		Rebounds				pf	a	t/o	blk	stl	pts	avg
				fg-fga	pct	3fg-fga	pct	ft-fa	pct	off	def	tot	avg							
SOUTHERN ILLINOIS	11/15/14	12	1-3	.333	0-1	.000	0-0	.000	2	3	5	5.0	1	0	2	0	0	2	2.0	
at Indiana State	11/18/14	16	5-6	.833	0-1	.000	1-1	1.000	1	4	5	5.0	0	0	2	0	1	11	6.5	
TEXAS A&M-CORPUS CH	11/23/14	14	3-6	.500	0-0	.000	1-2	.500	1	1	2	4.0	1	0	2	0	0	7	6.7	
NORTH CAROLINA A&T	11/25/14	6	1-1	1.000	0-0	.000	0-0	.000	0	1	1	3.3	0	0	1	0	1	2	5.5	
vs Mississippi State	11/28/14	22	3-9	.333	0-0	.000	1-3	.333	1	0	1	2.8	4	0	0	1	2	7	5.8	
vs Bradley	11/29/14	24	4-4	1.000	0-0	.000	2-4	.500	0	4	4	3.0	1	1	1	0	0	10	6.5	
ROCKHURST	12/02/14	26	5-7	.714	0-0	.000	2-6	.333	4	3	7	3.6	1	5	2	1	1	12	7.3	
at Wichita State	12/06/14	24	1-3	.333	1-1	1.000	1-3	.333	1	2	3	3.5	1	2	1	2	1	4	6.9	
SOUTH DAKOTA STATE	12/09/14	23	6-11	.545	0-3	.000	3-6	.500	5	4	9	4.1	1	1	3	0	1	15	7.8	
SIUE	12/13/14 *	15	3-5	.600	0-0	.000	2-5	.400	1	3	4	4.1	3	1	3	1	0	8	7.8	
TEXAS PAN-AMERICAN	12/17/14 *	21	2-4	.500	0-0	.000	4-7	.571	1	1	2	3.9	2	3	1	1	0	8	7.8	
VERMONT	12/21/14 *	25	4-13	.308	0-0	.000	2-4	.500	6	7	13	4.7	2	6	1	0	1	10	8.0	
Totals		3	228	38-72	.528	1-6	.167	19-41	.463	23	33	56	4.7	17	19	19	6	8	96	8.0

Games played: 12
Minutes/game: 19.0
Points/game: 8.0
FG Pct: 52.8
3FG Pct: 16.7
FT Pct: 46.3

Rebounds/game: 4.7
Assists/game: 1.6
Turnovers/game: 1.6
Assist/turnover ratio: 1.0
Steals/game: 0.7
Blocks/game: 0.5

YARBROUGH'S CAREER STATISTICS

Season	gp-gs	min/avg	Total		3-Point		F-Throws		Rebounds				Scoring							
			fg-fga	pct	fg-fga	pct	ft-fa	pct	off	def	tot	avg	pf	fo	ast	to	blk	stl	pts	avg
2014-15	12-3	228/19.0	38-72	.528	1-6	.167	19-41	.463	23	33	56	4.7	17	0	19	19	6	8	96	8.0
TOTAL	12-3	228/19.0	38-72	.528	1-6	.167	19-41	.463	23	33	56	4.7	17	0	19	19	6	8	96	8.0



24 • AARON HINES

So. • G • 6-0 • 175 • St. Louis, Mo. • Parkway North | MAJOR: Undecided



PREVIOUS

Transfer from John Wood Community College in Quincy, Ill., where he played in 24 games (3.6 minutes per game) ... averaged 5.8 ppg, 2.0 rpg and 1.0 apg ... added to the roster during on-campus tryouts in the fall.

PREP

Played at Parkway North High School ... as a senior, led the Vikings with 19.9 ppg ... buried 47 treys his senior year ... averaged 12.7 ppg as a junior while helping Parkway North to a district title.



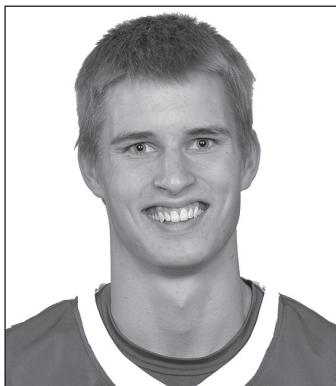
21 • GRANT HOLLANDER

Fr. • G • 6-3 • 175 • St. Charles, Mo. • Chaminade | MAJOR: Athletic Training



PREVIOUS

Prepped at Chaminade in St. Louis ... appeared in all 27 games as a senior and averaged 8.2 ppg ... shot 47 percent from the field and 38 percent from 3-point range ... added to roster during on-campus tryouts in the fall.



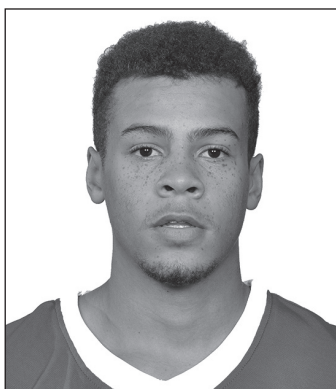
12 • STEPHEN LEAZER

Fr. • G • 6-4 • 180 • Mt. Prospect, Ill. • Northridge Prep | MAJOR: Undecided



PREVIOUS

Played at Northridge Prep ... captained the Knights as a senior and led them to a 20-8 record, an Illinois High School Association regional championship and a second-place conference finish ... Illinois Basketball Coaches Association All-State special mention selection and first-team All-Conference.



33 • ROYCE SIMPSON

So. • G • 6-4 • 180 • Chicago, Ill. • Marist | MAJOR: Business Administration



2013-14 • Freshman

Appeared in three games for the Billikens.

PREVIOUS

Two-year letterwinner at Marist High School in Chicago ... helped Red Hawks to a regional championship in 2012 ... turned in his best performance with 16 points against Southland.

Official Basketball Box Score -- Game Totals -- Final Statistics
Southern Illinois vs Saint Louis
11/15/14 7:07 p.m. at St. Louis, Mo. (Chaifetz Arena)

Southern Illinois 59 • 0-1

#	Player	Total		3-Ptr		Rebounds			PF	TP	A	TO	Blk	Stl	Min
		FG-FGA	FG-FGA	FT-FTA	Off	Def	Tot								
23	Olaniyan,Bola	f	0-1	0-0	2-4	2	0	2	2	2	0	0	0	0	12
33	O'Brien,Sean	f	5-9	1-1	4-8	5	7	12	2	15	2	4	2	3	33
01	Pendleton,Jalen	g	3-4	0-0	0-1	0	1	1	4	6	1	1	0	0	17
11	Smithpeters,Tyler	g	2-6	2-3	3-3	0	0	0	3	9	1	2	0	2	36
25	Beane,Anthony	g	6-14	0-3	2-2	0	0	0	4	14	1	0	0	0	19
02	Goodwin,K.C	g	1-4	1-2	1-3	1	4	5	4	4	3	2	0	3	28
05	Lavender,Deion	g	0-2	0-2	0-0	0	1	1	0	0	0	0	0	0	15
10	Djimde,Ibby	g	2-5	0-0	1-2	1	1	2	2	5	0	2	0	1	21
13	Glotta,Chaz	g	0-2	0-2	0-0	0	0	0	1	0	0	0	0	0	2
14	Caroline,Jordan	g	2-6	0-0	0-0	2	2	4	3	4	1	2	0	1	14
24	Verhines,Dawson	g	0-0	0-0	0-0	1	0	1	0	0	0	1	0	0	3
Team					2		4		6						
Totals			21-53	4-13	13-23	14	20	34	25	59	9	14	2	9	200

FG % 1st Half: 13-28 46.4% 2nd half: 8-25 32.0% Game: 21-53 39.6%
 3FG % 1st Half: 2-7 28.6% 2nd half: 2-6 33.3% Game: 4-13 30.8%
 FT % 1st Half: 9-14 64.3% 2nd half: 4-9 44.4% Game: 13-23 56.5%

Saint Louis 62 • 1-0

#	Player	Total		3-Ptr		Rebounds			PF	TP	A	TO	Blk	Stl	Min
		FG-FGA	FG-FGA	FT-FTA	Off	Def	Tot								
15	LANCONA, Tanner	f	0-1	0-1	0-0	0	3	3	1	0	1	0	0	0	12
54	MANNING, John	c	0-0	0-0	2-2	0	1	1	1	2	0	1	1	0	13
02	MCBROOM, Austin	g	6-14	5-7	7-10	1	4	5	1	24	1	3	0	1	35
03	YACOBBOU, Ash	g	3-7	0-1	6-7	3	4	7	3	12	1	3	1	0	23
05	ROBY, Davell	g	1-5	1-2	1-1	0	0	0	3	4	3	1	0	1	20
00	BARTLEY, Marcus	g	0-0	0-0	1-2	0	0	0	1	1	1	0	0	0	11
04	YARBROUGH, Milik	g	1-3	0-1	0-0	2	3	5	1	2	0	2	0	0	12
11	REYNOLDS, Miles	g	0-0	0-0	0-1	0	2	2	1	0	1	1	0	0	11
14	JOLLY, Brett	g	0-1	0-0	0-2	0	0	0	3	0	0	0	1	0	10
25	GILLMANN, Austin	g	2-3	1-2	1-1	0	4	4	2	6	1	3	0	1	17
32	CRAWFORD, Mike	g	4-6	1-1	1-2	1	1	2	2	10	2	2	0	1	27
35	AGBEKO, Reggie	g	0-2	0-0	1-2	0	1	1	0	1	1	1	0	0	9
Team					3		2		5						
Totals			17-42	8-15	20-30	10	25	35	19	62	12	17	3	4	200

FG % 1st Half: 9-21 42.9% 2nd half: 8-21 38.1% Game: 17-42 40.5%
 3FG % 1st Half: 4-7 57.1% 2nd half: 4-8 50.0% Game: 8-15 53.3%
 FT % 1st Half: 11-16 68.8% 2nd half: 9-14 64.3% Game: 20-30 66.7%

Officials: Kipp Kissinger, Mark Whitehead, Kelly Self
 Technical fouls: Southern Illinois-None. Saint Louis-None.
 Attendance: 10015

Score by periods	1st	2nd	Total
Southern Illinois	37	22	59
Saint Louis	33	29	62

Last FG - SLU 2nd-06:00, SLU 2nd-00:10.
 Largest lead - SLU by 6 1st-11:29, SLU by 3 1st-15:33.
 SLU led for 32:36. SLU led for 03:34. Game was tied for 03:49.

Score tied - 4 times.
 Lead changed - 7 times.

Official Basketball Box Score -- Game Totals -- Final Statistics
Saint Louis vs Indiana State
11/18/14 7:05 p.m. at Terre Haute, Ind. (Hulman Center)

Saint Louis 69 • 2-0

#	Player	Total		3-Ptr		Rebounds			PF	TP	A	TO	Blk	Stl	Min
		FG-FGA	FG-FGA	FT-FTA	Off	Def	Tot								
15	LANCONA, Tanner	f	0-2	0-1	0-0	0	1	1	1	0	0	0	0	0	11
54	MANNING, John	c	1-3	0-0	1-2	0	2	2	2	3	0	1	0	1	12
02	MCBROOM, Austin	g	1-8	1-3	2-2	0	1	1	3	5	3	1	0	0	26
03	YACOBBOU, Ash	g	4-13	0-2	7-9	3	4	7	3	15	0	0	0	0	22
05	ROBY, Davell	g	0-3	0-0	0-0	3	2	5	2	0	2	2	0	0	12
00	BARTLEY, Marcus	g	3-4	2-2	2-2	0	3	3	3	10	2	2	0	1	20
04	YARBROUGH, Milik	g	5-6	0-1	1-1	1	4	5	0	11	0	2	0	1	16
11	REYNOLDS, Miles	g	2-5	0-1	3-4	0	1	1	2	7	1	0	0	0	16
14	JOLLY, Brett	g	0-1	0-0	5-6	2	2	4	4	5	1	1	1	1	10
25	GILLMANN, Austin	g	1-3	1-1	0-0	0	1	1	0	3	0	0	0	0	18
32	CRAWFORD, Mike	g	2-5	1-3	3-4	0	2	2	1	8	1	2	0	0	24
35	AGBEKO, Reggie	g	1-2	0-0	0-1	1	5	6	1	2	0	0	0	0	13
Team					5		4		9						
Totals			20-55	5-14	24-31	15	32	47	22	69	10	12	1	4	200

FG % 1st Half: 9-27 33.3% 2nd half: 11-28 39.3% Game: 20-55 36.4%
 3FG % 1st Half: 3-7 42.9% 2nd half: 2-7 28.6% Game: 5-14 35.7%
 FT % 1st Half: 7-9 77.8% 2nd half: 17-22 77.3% Game: 24-31 77.4%

Indiana State 56 • 1-1

#	Player	Total		3-Ptr		Rebounds			PF	TP	A	TO	Blk	Stl	Min
		FG-FGA	FG-FGA	FT-FTA	Off	Def	Tot								
00	Kitchell, Jake	f	1-3	0-2	3-5	3	4	7	1	5	1	2	6	0	21
05	Gant, Justin	f	5-16	1-7	1-2	2	4	6	1	12	0	0	2	0	31
01	Smith, Christian	g	3-9	0-2	1-2	4	3	7	4	7	0	0	0	0	21
04	Scott, Brenton	g	3-9	2-4	0-0	0	3	3	3	8	2	1	0	0	26
00	Brown, Devonte	g	6-10	0-2	4-7	1	4	5	2	16	1	3	0	0	35
02	Etherington, Alex	g	0-2	0-2	0-0	0	0	0	2	0	0	0	0	0	22
10	Alexander, Kalen	g	1-1	1-1	0-0	0	0	0	0	3	0	0	0	0	1
15	Bennett, Tre	g	1-10	1-5	1-2	1	0	1	4	4	1	1	0	0	19
20	Prusator, Grant	g	0-1	0-0	0-0	0	0	0	0	0	0	0	0	0	4
34	Murphy, Brandon	g	0-0	0-0	1-2	1	3	4	3	1	0	0	0	0	6
41	Amor, Nick	g	0-0	0-0	0-0	0	0	0	0	0	1	0	0	0	1
42	Bell, TJ	g	0-0	0-0	0-0	1	2	3	3	0	1	1	1	0	13
Team					2		1		3						
Totals			20-61	5-25	11-21	15	24	39	23	56	7	8	9	2	200

FG % 1st Half: 10-30 33.3% 2nd half: 10-31 32.3% Game: 20-61 32.8%
 3FG % 1st Half: 3-14 21.4% 2nd half: 2-11 18.2% Game: 5-25 20.0%
 FT % 1st Half: 4-9 44.4% 2nd half: 7-12 58.3% Game: 11-21 52.4%

Officials: Gerry Pollard, Bert Smith, Winston Stith
 Technical fouls: Saint Louis-None. Indiana State-None.
 Attendance: 4348

Score by periods	1st	2nd	Total
Saint Louis	28	41	69
Indiana State	27	29	56

Last FG - SLU 2nd-01:12, INS 2nd-00:00.
 Largest lead - SLU by 16 2nd-01:12, INS by 12 1st-06:49.
 SLU led for 13:09. INS led for 23:07. Game was tied for 03:20.

Score tied - 4 times.
 Lead changed - 5 times.

Official Basketball Box Score -- Game Totals -- Final Statistics
Texas A&M-Corpus Christi vs Saint Louis
11/23/14 1 p.m. at St. Louis, Mo. (Chaifetz Arena)

Texas A&M-Corpus Christi 62 • 2-1

#	Player	Total		3-Ptr		Rebounds			PF	TP	A	TO	Blk	Stl	Min
		FG-FGA	FG-FGA	FT-FTA	Off	Def	Tot								
23	Douvier, Bryce	f	4-10	0-2	2-2	2	7	9	3	10	1	2	0	0	37
34	Francis, Dale	f	0-0	0-0	0-0	0	2	2	3	0	0	0	0	0	13
00	Pye, Brandon	g	4-8	2-5	0-0	0	1	1	3	10	1	1	0	0	27
10	Jordan, John	g	5-10	0-0	3-6	0	2	2	1	13	3	3	0	3	34
11	Currie, Jelani	g	3-5	1-2	1-2	1	2	3	2	8	2	1	0	1	29
02	Ali, Hameed	g	0-1	0-0	0-0	0	0	0	0	3	1	0	0	0	7
02	Martinez, Cole	g	0-0	0-0	0-0	0	1	1	0	0	0	1	0	0	3
04	Amin, Ehab	g	3-3	2-2	1-1	0	0	0	0	9	0	0	0	2	7
22	Toney, Emmanuel	g	0-0	0-0	0-0	0	0	0	0	0	0	0	0	0	3
25	Thomas, Rashawn	g	4-7	0-0	2-3	1	5	6	4	10	1	4	0	2	24
31	Juricke, Viktor	g	1-4	0-2	0-0	1	2	3	2	2	3	1	0	0	16
Team					1		4		5						
Totals			24-48	5-13	9-14	6	26	32	18	62	14	14	0	8	200

FG % 1st Half: 11-23 47.8% 2nd half: 13-25 52.0% Game: 24-48 50.0%
 3FG % 1st Half: 2-8 25.0% 2nd half: 3-5 60.0% Game: 5-13 38.5%
 FT % 1st Half: 0-0 0.0% 2nd half: 9-14 64.3% Game: 9-14 64.3%

Saint Louis 56 • 2-1

BILLIKEN BASKETBALL GAME NOTES • vs. VANDERBILT (12/31/14)

Official Basketball Box Score -- Game Totals -- Final Statistics Mississippi State vs Saint Louis 11/28/14 8:40 p.m. at American Bank Ctr (Corpus Christi, TX)

Mississippi State 75 • 5-0

#	Player	Total			3-Ptr			Rebounds			PF	TP	A	TO	Blk	Stl	Min
		FG	FGA	FT	FTA	Off	Def	Tot									
20	Gavin Ware	f	8-11	0-0	0-0	1	4	5	3	16	1	2	3	0	22		
25	Roquez Johnson	f	2-4	0-0	1-2	1	4	5	0	5	1	3	0	26			
01	Fred Thomas	g	4-6	3-5	3-3	0	3	3	2	14	2	1	0	21			
03	Trivante Bloodman	g	2-3	0-0	1-1	0	3	3	1	5	3	4	0	20			
23	Travis Daniels	g	8-11	4-5	1-1	2	4	6	0	21	1	0	0	28			
00	Maurice Dunlap	g	1-4	0-3	0-0	0	1	1	2	0	0	0	0	5			
02	Demetrius Houston	g	2-5	0-1	0-0	1	2	3	0	4	1	0	1	12			
05	Isaiah Butler	g	0-0	0-0	0-0	0	0	0	0	0	0	0	0	1			
10	Jeffery Johnson	g	0-0	0-0	0-0	0	0	0	0	0	0	0	0	1			
15	I.J. Ready	g	2-6	1-3	0-0	0	2	2	0	5	5	0	0	21			
22	Fallou Ndoye	g	1-2	0-0	0-0	0	2	2	5	2	0	0	0	13			
32	Craig Sword	g	0-0	0-0	0-0	0	2	2	2	0	1	3	1	11			
33	Oliver Black	g	0-2	0-0	1-2	3	1	4	2	1	1	1	0	17			
Team						0	3	3									
Totals			30-54	8-17	7-9	8	31	39	16	75	17	14	5	4	198		

FG % 1st Half: 14-22 63.6% 2nd half: 16-32 50.0% Game: 30-54 55.6%
 3FG % 1st Half: 4-5 80.0% 2nd half: 4-12 33.3% Game: 8-17 47.1%
 FT % 1st Half: 5-6 83.3% 2nd half: 2-3 66.7% Game: 7-9 77.8%

Saint Louis 50 • 3-2

#	Player	Total			3-Ptr			Rebounds			PF	TP	A	TO	Blk	Stl	Min
		FG	FGA	FT	FTA	Off	Def	Tot									
15	LANCONA, Tanner	f	1-5	0-2	0-0	1	1	2	0	2	0	0	0	14			
54	MANNING, John	c	1-4	0-0	0-0	1	0	1	0	2	1	1	1	15			
02	MCBROOM, Austin	g	4-13	2-7	0-0	1	3	3	1	10	1	1	0	27			
03	YACOUBOU, Ash	g	4-6	0-1	0-2	1	2	3	2	8	0	2	0	17			
00	ROBY, Davell	g	1-3	1-3	0-2	0	1	1	3	0	1	0	0	13			
00	BARTLEY, Marcus	g	1-3	1-2	0-0	0	2	2	1	3	2	1	0	22			
04	YARBROUGH, Milik	g	3-9	0-0	1-3	1	0	1	4	7	0	0	1	22			
11	REYNOLDS, Miles	g	0-3	0-1	2-4	0	3	3	1	2	0	1	0	13			
14	JOLLY, Brett	g	2-3	1-2	0-0	0	1	1	2	5	0	1	1	16			
25	GILLMANN, Austin	g	0-1	0-0	0-0	1	1	2	0	0	0	0	0	9			
32	CRAWFORD, Mike	g	1-3	0-2	0-0	1	0	1	0	2	0	1	0	15			
33	AGBEKO, Reggie	g	2-2	0-0	2-2	1	1	2	0	6	0	1	0	17			
Team						1	1	2									
Totals			20-55	5-20	5-13	8	16	24	12	50	4	11	3	4	200		

FG % 1st Half: 11-27 40.7% 2nd half: 9-28 32.1% Game: 20-55 36.4%
 3FG % 1st Half: 3-11 27.3% 2nd half: 2-9 22.2% Game: 5-20 25.0%
 FT % 1st Half: 2-7 28.6% 2nd half: 3-6 50.0% Game: 5-13 38.5%

Officials: Gene Grimshaw, Ross Cullins, Jerry Scherzinger
 Technical fouls: Mississippi State-None. Saint Louis-None.
 Attendance: 2385

Score by periods	1st	2nd	Total
Mississippi State	37	38	75
Saint Louis	27	23	50

Last FG - MS 2nd-01:06, SLU 2nd-00:06.
 Largest lead - MS by 29 2nd-01:06, SLU None.
 MS led for 37:47. SLU led for 00:00. Game was tied for 01:46.

Points	In	Off	2nd	Fast	Bench
MS	24	8	6	17	14
SLU	24	13	6	0	25

Score tied - 0 times.
 Lead changed - 0 times.

Official Basketball Box Score -- Game Totals -- Final Statistics Saint Louis vs Bradley 11/29/14 3:30 p.m. at American Bank Ctr (Corpus Christi, TX)

Saint Louis 60 • 4-2

#	Player	Total			3-Ptr			Rebounds			PF	TP	A	TO	Blk	Stl	Min
		FG	FGA	FT	FTA	Off	Def	Tot									
14	JOLLY, Brett	f	4-6	0-1	2-3	1	1	2	3	10	2	1	1	0	32		
35	AGBEKO, Reggie	f	3-6	0-0	2-3	0	4	4	1	8	0	1	0	26			
00	BARTLEY, Marcus	g	0-4	0-3	0-0	0	2	2	5	0	3	2	0	22			
02	MCBROOM, Austin	g	9-14	6-9	2-3	1	0	1	1	26	2	1	0	35			
03	YACOUBOU, Ash	g	1-4	0-2	0-0	0	1	1	3	2	1	3	0	23			
04	YARBROUGH, Milik	g	4-4	0-0	2-4	0	4	4	1	10	1	1	0	24			
11	REYNOLDS, Miles	g	0-4	0-1	0-0	0	3	3	2	0	1	2	0	16			
25	GILLMANN, Austin	g	0-1	0-1	0-0	0	1	1	1	0	1	0	0	8			
32	CRAWFORD, Mike	g	2-4	0-2	0-1	0	0	0	2	4	2	1	1	15			
Team						2	1	3									
Totals			23-47	6-19	8-14	4	17	21	19	60	13	12	2	5	201		

FG % 1st Half: 12-24 50.0% 2nd half: 11-23 47.8% Game: 23-47 48.9%
 3FG % 1st Half: 3-9 33.3% 2nd half: 3-10 30.0% Game: 6-19 31.6%
 FT % 1st Half: 0-3 0.0% 2nd half: 8-11 72.7% Game: 8-14 57.1%

Bradley 57 • 2-4

#	Player	Total			3-Ptr			Rebounds			PF	TP	A	TO	Blk	Stl	Min
		FG	FGA	FT	FTA	Off	Def	Tot									
04	Barnes, Auston	f	5-8	2-4	0-0	5	4	9	1	12	3	2	0	0	30		
21	Cunningham, Josh	f	4-7	2-4	1-2	3	4	7	2	11	0	4	0	0	32		
25	Morgan, Jermaine	c	1-4	0-0	2-3	1	3	4	4	4	1	1	1	0	16		
00	Bell, Ka'Darryl	g	1-4	1-3	0-0	0	1	1	3	3	1	6	0	0	34		
24	Grier, Omari	g	2-10	2-8	0-1	1	4	5	3	6	1	0	0	0	29		
02	Jones, Warren	g	4-11	2-5	7-10	0	2	2	2	17	3	2	0	1	31		
03	Fields, Anthony	g	1-1	0-0	0-0	0	0	0	0	2	0	1	0	1	5		
22	Taylor, Xzavier	g	1-1	0-0	0-0	1	1	2	1	2	1	0	0	0	12		
32	Shaw, Mike	g	0-0	0-0	0-0	1	3	4	2	0	0	3	0	2	11		
Team						1	3	4									
Totals			19-46	9-24	10-16	13	25	38	18	57	10	19	1	4	200		

FG % 1st Half: 12-26 46.2% 2nd half: 7-20 35.0% Game: 19-46 41.3%
 3FG % 1st Half: 5-12 41.7% 2nd half: 4-12 33.3% Game: 9-24 37.5%
 FT % 1st Half: 5-8 62.5% 2nd half: 5-8 62.5% Game: 10-16 62.5%

Officials: Pat Boeh, Tom O'Neill Jr., Kelly Davis
 Technical fouls: Saint Louis-None. Bradley-None.
 Attendance: 2867

Score by periods	1st	2nd	Total
Saint Louis	27	33	60
Bradley	34	23	57

Last FG - SLU 2nd-00:08, BRAD 2nd-00:41.
 Largest lead - SLU by 4 2nd-07:32, BRAD by 10 1st-01:07.
 SLU led for 05:16. BRAD led for 27:12. Game was tied for 07:32.

Score tied - 7 times.
 Lead changed - 3 times.

Points	In	Off	2nd	Fast	Bench
SLU	28	18	7	2	14
BRAD	12	19	11	0	21

Official Basketball Box Score -- Game Totals -- Final Statistics Rockhurst vs Saint Louis 12/02/14 7:00 p.m. at St. Louis, Mo. (Chaifetz Arena)

Rockhurst 48 • 3-2

#	Player	Total			3-Ptr			Rebounds			PF	TP	A	TO	Blk	Stl	Min
		FG	FGA	FT	FTA	Off	Def	Tot									
32	Burns, Russell	f	3-6	0-1	0-0	1	4	5	2	6	0	3	0	1	26		
42	Fatkin, Adam	f	2-5	1-1	0-1	0	2	2	5	5	1	3	3	1	21		
44	Washington, Dominique	c	3-7	0-1	2-2	0	3	3	2	8	0	2	0	0	15		
10	Roberts, Josh	g	2-6	1-2	0-0	0	0	0	4	5	3	2	0	23			
20	Burke, John	g	0-1	0-0	0-0	0	1	1	3	0	1	3	0	0	9		
02	Briscoe, Sam	g	1-3	0-0	0-0	0	0	0	2	2	1	2	0	0	11		
12	Hagan, Alex	g	0-1	0-0	0-0	0	0	0	1	0	0	0	0	0	10		
14	Souder, Logan	g	0-1	0-1	0-0	0	1	1	0	0	0	1	0	0	7		
24	Duffy, Liam	g	2-3	2-3	0-0	0	1	1	6	1	2	0	1	1	10		
30	McMeekin, Scott	g	1-2	1-1	0-0	0	0	0	0	3	0	0	0	1	5		
34	Beckett, Cooper	g	0-0	0-0	1-2	0	0	0	1	1	1	0	0	0	8		
40	Brannon, Joshua	g	4-8	0-0	0-0	4	4	8	4	8	0	2	0	0	20		
50	Amedi, Kareem	g	0-2	0-0	2-2	0	1	1	0	2	1	0	0	0	8		
52	Wingserson, David	g	0-0	0-0	0-0	0	1	1	0	0	1	1	0	0	8		
54	Ellwanger, Andrew	g	1-6	0-4	0-0	1	1	2	1	2	1	1	0	0	19		
Team						2	3	5									
Totals			19-51	5-14	5-7	8	22	30	27	48	11	22	4	6	200		

FG % 1st Half: 9-23 39.1% 2nd half: 10-28 35.7% Game: 19-51 37.3%
 3FG % 1st Half: 2-7 28.6% 2nd half: 3-7 42.9% Game: 5-14 35.7%
 FT % 1st Half:

Official Basketball Box Score -- Game Totals -- Final Statistics
South Dakota State vs Saint Louis
12/09/14 7:00 p.m. at St. Louis, Mo. (Chaifetz Arena)

South Dakota State 62 • 5-3

#	Player	Total		3-Ptr		Rebounds			PF	TP	A	TO	Blk	Stl	Min
		FG-FGA	FG-FGA	FT-FTA	Off	Def	Tot								
24	Zach Horstman	f	5-7	1-2	1-2	1	4	5	2	12	2	3	0	0	22
34	Cody Larson	f	3-8	0-0	1-2	0	3	3	5	7	3	3	2	0	27
02	Deondre Parks	g	4-7	1-1	5-5	1	5	6	4	14	6	2	0	1	29
04	Jake Bittle	g	3-4	3-3	0-2	1	3	4	3	9	2	3	1	2	35
12	Keaton Moffitt	g	0-1	0-1	1-2	0	3	3	4	1	0	3	0	1	18
01	Skyler Flatten	g	0-3	0-1	0-0	0	0	0	0	0	0	1	0	0	10
05	Anders Broman	g	0-0	0-0	0-0	0	2	2	0	0	1	0	0	1	5
23	Reed Tellinghuisen	g	5-7	3-4	2-2	0	1	1	3	15	0	4	1	0	24
25	Lane Severyn	g	0-1	0-1	0-0	1	0	1	0	0	0	0	0	0	5
30	Connor Devine	g	1-1	0-0	0-2	3	1	4	2	2	1	2	4	0	17
42	Ian Theisen	g	0-2	0-0	2-2	1	0	1	2	2	1	1	0	1	8
Team						2	3	5							
Totals			21-41	8-13	12-19	10	25	35	25	62	16	22	8	6	200

FG % 1st Half: 8-20 40.0% 2nd half: 13-21 61.9% Game: 21-41 51.2%
 3FG % 1st Half: 4-8 50.0% 2nd half: 4-5 80.0% Game: 8-13 61.5%
 FT % 1st Half: 5-7 71.4% 2nd half: 7-12 58.3% Game: 12-19 63.2%

Saint Louis 55 • 5-4

#	Player	Total		3-Ptr		Rebounds			PF	TP	A	TO	Blk	Stl	Min
		FG-FGA	FG-FGA	FT-FTA	Off	Def	Tot								
35	AGBEKO, Reggie	f	0-1	0-0	3-6	1	0	1	0	3	0	1	0	1	8
54	MANNING, John	c	2-5	0-0	2-2	5	1	6	3	6	0	1	0	0	13
02	MCBROOM, Austin	g	1-7	0-2	0-0	2	0	2	1	2	4	3	0	0	31
03	YACOUBOU, Ash	g	2-8	0-2	2-2	1	2	3	5	6	0	0	0	3	30
05	ROBY, Davell	g	0-3	0-2	3-3	0	1	1	1	3	3	0	0	2	25
00	BARTLEY, Marcus	g	1-5	1-2	0-0	1	2	3	4	3	0	2	0	0	16
04	YARBROUGH, Milik	g	6-11	0-3	3-6	5	4	9	1	15	1	3	0	1	23
11	REYNOLDS, Miles	g	0-2	0-2	0-0	0	0	0	5	0	1	3	0	1	8
14	JOLLY, Brett	g	0-1	0-1	0-0	0	0	0	1	0	0	0	0	0	3
15	LANCONA, Tanner	g	2-3	0-0	1-2	0	1	1	1	5	0	0	0	0	9
25	GILLMANN, Austin	g	3-9	1-5	0-2	0	2	2	3	7	2	1	1	0	25
32	CRAWFORD, Mike	g	2-2	0-0	1-1	0	0	0	0	5	0	0	0	0	9
Team						1	2	3							
Totals			19-57	2-19	15-24	16	15	31	25	55	11	14	1	11	200

FG % 1st Half: 9-29 31.0% 2nd half: 10-28 35.7% Game: 19-57 33.3%
 3FG % 1st Half: 1-11 9.1% 2nd half: 1-8 12.5% Game: 2-19 10.5%
 FT % 1st Half: 5-10 50.0% 2nd half: 10-14 71.4% Game: 15-24 62.5%

Officials: Tim Ebersole, Tim Kelly, Tony Chiazza
 Technical fouls: South Dakota State-None. Saint Louis-None.
 Attendance: 5102

Score by periods	1st	2nd	Total
South Dakota State	25	37	62
Saint Louis	24	31	55

Last FG - SDSU 2nd-00:24, SLU 2nd-01:36.
 Largest lead - SDSU by 9 1st-08:19, SLU by 7 2nd-16:50.
 SDSU led for 12:49, SLU led for 23:36. Game was tied for 02:58.

Score tied - 4 times.
 Lead changed - 13 times.

Official Basketball Box Score -- Game Totals -- Final Statistics
SIUE vs Saint Louis
12/13/14 6 p.m. at St. Louis, Mo. (Chaifetz Arena)

SIUE 61 • 1-6

#	Player	Total		3-Ptr		Rebounds			PF	TP	A	TO	Blk	Stl	Min
		FG-FGA	FG-FGA	FT-FTA	Off	Def	Tot								
03	JACKSON, Keaton	f	3-4	0-0	1-1	5	2	7	4	7	0	3	1	0	10
23	NUNN, Rozell	f	1-9	0-2	0-0	1	4	5	3	2	1	1	0	1	31
01	DAVIS, Kris	g	7-11	2-3	2-3	0	2	2	2	18	2	2	0	1	37
30	MESSER, Michael	g	3-8	1-3	0-0	1	0	1	5	7	0	1	0	0	23
32	STEWART, Donivine	g	5-14	0-2	2-3	1	3	4	1	12	7	2	0	2	36
00	CHANDLER, Michael	g	0-0	0-0	0-0	0	0	0	0	0	0	0	0	0	1
02	WILTZ, Maurice	g	1-2	1-1	1-2	0	0	0	0	5	4	0	2	0	13
04	CARR, C.J.	g	0-1	0-1	1-2	0	0	0	0	1	0	2	0	1	7
05	FIORENTINOS, Grant	g	3-5	1-1	3-4	1	2	3	4	10	1	1	1	1	30
13	NEWTON, Jake	g	0-2	0-1	0-0	0	0	0	0	1	0	1	0	0	11
24	HENRY, Jalen	g	0-0	0-0	0-0	0	0	0	0	0	0	0	0	0	1
45	SIMMONS, Keenan	g	0-0	0-0	0-0	0	0	0	0	1	0	0	0	0	0+
Team						5	2	7							
Totals			23-56	5-14	10-15	14	15	29	26	61	11	16	2	8	200

FG % 1st Half: 13-29 44.8% 2nd half: 10-27 37.0% Game: 23-56 41.1%
 3FG % 1st Half: 2-7 28.6% 2nd half: 3-7 42.9% Game: 5-14 35.7%
 FT % 1st Half: 6-8 75.0% 2nd half: 4-7 57.1% Game: 10-15 66.7%

Saint Louis 67 • 6-4

#	Player	Total		3-Ptr		Rebounds			PF	TP	A	TO	Blk	Stl	Min
		FG-FGA	FG-FGA	FT-FTA	Off	Def	Tot								
04	YARBROUGH, Milik	f	3-5	0-0	2-5	1	3	4	3	8	1	3	1	0	15
54	MANNING, John	c	2-3	0-0	2-2	0	6	6	2	6	3	0	4	0	23
02	MCBROOM, Austin	g	4-6	3-4	2-2	0	0	0	1	13	2	0	0	3	23
03	YACOUBOU, Ash	g	3-7	0-1	4-4	0	0	0	2	10	0	1	1	1	25
05	ROBY, Davell	g	0-2	0-0	1-2	1	3	4	1	2	4	0	0	0	19
00	BARTLEY, Marcus	g	1-3	0-2	0-0	1	2	3	1	2	3	2	0	0	16
11	REYNOLDS, Miles	g	1-1	0-0	3-3	0	1	1	0	5	0	1	0	1	12
14	JOLLY, Brett	g	0-3	0-2	0-0	0	0	0	0	3	0	0	0	0	6
15	LANCONA, Tanner	g	2-2	0-0	1-3	0	1	1	1	5	3	1	0	0	11
25	GILLMANN, Austin	g	3-3	0-0	0-0	1	2	3	0	6	2	2	0	0	11
32	CRAWFORD, Mike	g	1-3	0-1	2-3	1	1	2	2	4	0	2	0	1	25
35	AGBEKO, Reggie	g	3-4	0-0	1-4	0	1	1	2	7	0	2	0	0	14
Team						3	0	3							
Totals			23-42	3-10	18-28	8	20	28	18	67	16	18	6	6	200

FG % 1st Half: 13-21 61.9% 2nd half: 10-21 47.6% Game: 23-42 54.8%
 3FG % 1st Half: 2-4 50.0% 2nd half: 1-6 16.7% Game: 3-10 30.0%
 FT % 1st Half: 9-11 81.8% 2nd half: 9-17 52.9% Game: 18-28 64.3%

Officials: Bill Covington, Jr., Keith Fogleman, Ty Meixsell
 Technical fouls: SIUE-None. Saint Louis-JOLLY, Brett.
 Attendance: 6032

Score by periods	1st	2nd	Total
SIUE	34	27	61
Saint Louis	37	30	67

Last FG - SIUE 2nd-01:45, SLU 2nd-00:34.
 Largest lead - SIUE by 1 1st-14:31, SLU by 9 2nd-15:44.
 SIUE led for 00:07, SLU led for 37:10. Game was tied for 02:06.

Score tied - 3 times.
 Lead changed - 2 times.

Official Basketball Box Score -- Game Totals -- Final Statistics
Texas Pan-American vs Saint Louis
12/17/14 7 p.m. at St. Louis, Mo. (Chaifetz Arena)

Texas Pan-American 69 • 5-5

#	Player	Total		3-Ptr		Rebounds			PF	TP	A	TO	Blk	Stl	Min
		FG-FGA	FG-FGA	FT-FTA	Off	Def	Tot								
21	Joessaar, Janari	f	6-9	4-7	10-11	2	4	6	3	26	5	4	2	1	33
24	Hines, Shaquille	f	1-6	0-0	1-2	4	2	6	5	3	1	2	1	0	27
23	Kimasa, Dan	c	8-12	0-0	2-2	4	6	10	3	18	0	2	1	1	33
00	Osborne, Everett	g	2-4	1-1	0-1	0	1	1	1	5	0	0	0	0	20
05	Boga, Shaquille	g	4-15	2-7	3-4	1	2	3	2	13	4	1	0	0	33
01	Watson, Elijah	g	3-3	0-1	0-0	0	1	1	5	0	0	3	0	0	24
03	Hobbs, Isaiah	g	1-2	0-0	1-2	1	1	2	2	3	0	0	1	0	8
10	McDonald, Moe	g	0-0	0-0	1-2	0	2	2	1	1	1	0	0	0	16
11	Bigum, Andreas	g	0-0	0-0	0-0	0	0	0	0	2	1	1	0	0	6
Team						1	4	5							
Totals			22-51	7-16	18-24	13	23	36	24	69	12	14	5	2	200

FG % 1st Half: 7-20 35.0% 2nd half: 15-31 48.4% Game: 22-51 43.1%
 3FG % 1st Half: 4-6 66.7% 2nd half: 3-10 30.0% Game: 7-16 43.8%
 FT % 1st Half: 8-13 61.5% 2nd half: 10-11 90.9% Game: 18-24 75.0%

Saint Louis 75 • 7-4

#	Player	Total		3-Ptr		Rebounds			PF	TP	A	TO	Blk	Stl	Min
		FG-FGA	FG-FGA												

RESULTS

@SaintLouisMBB
Saint Louis Season Schedule/Results & Leaders (as of Dec 21, 2014)
All games

RECORD:	OVERALL	HOME	AWAY	NEUTRAL
ALL GAMES	8-4	6-2	1-1	1-1
CONFERENCE	0-0	0-0	0-0	0-0
NON-CONFERENCE	8-4	6-2	1-1	1-1

Date	Opponent	Score	Att.	High Points	High Rebounds
11/15/14	SOUTHERN ILLINOIS	W 62-59	10015	(24)MCBROOM, Austin	(7)YACOUBOU, Ash
11/18/14	at Indiana State	W 69-56	4348	(15)YACOUBOU, Ash	(7)YACOUBOU, Ash
11/23/14	!TEXAS A&M-CORPUS CHRISTI	56-62 L	6620	(13)YACOUBOU, Ash	(5)ROBY, Davell
					(5)YACOUBOU, Ash
					(5)AGBEKO, Reggie
11/25/14	!NORTH CAROLINA A&T	W 57-54	4507	(19)REYNOLDS, Miles	(5)YACOUBOU, Ash
11/28/14	!vs Mississippi State	50-75 L	2385	(10)MCBROOM, Austin	(3)REYNOLDS, Miles
					(3)MCBROOM, Austin
					(3)YACOUBOU, Ash
11/29/14	!vs Bradley	W 60-57	2867	(26)MCBROOM, Austin	(4)YARBROUGH, Milik
					(4)AGBEKO, Reggie
12/02/14	ROCKHURST	W 80-48	5290	(14)REYNOLDS, Miles	(10)YACOUBOU, Ash
12/06/14	at Wichita State	52-81 L	15004	(13)BARTLEY, Marcus	(4)GILLMANN, Austin
12/09/14	SOUTH DAKOTA STATE	55-62 L	5102	(15)YARBROUGH, Milik	(9)YARBROUGH, Milik
12/13/14	SIUE	W 67-61	6032	(13)MCBROOM, Austin	(6)MANNING, John
12/17/14	TEXAS PAN-AMERICAN	W 75-69	5173	(19)CRAWFORD, Mike	(8)YACOUBOU, Ash
12/21/14	VERMONT	W 58-55	6818	(10)YACOUBOU, Ash	(13)YARBROUGH, Milik
					(10)YARBROUGH, Milik

! = Corpus Christi Coastal Classic
 * = A-10 Game

Attendance Summary	Games	Attend	Avg/Game
Home	8	49557	6195
Away	2	19352	9676
Neutral	2	5252	2626
Total	12	74161	6180

SLU/OPP COMPARISON STATS

@SaintLouisMBB

Saint Louis Team Game-by-Game Comparison (as of Dec 21, 2014)

All games

Opponent	1st	2nd	Score	Mar	Total FG	FG Pct	3-Pointers	3FG Pct	Free Throws	FT Pct	Rebounds	Assist	T/Over	Block	Steal	Fouls
SOUTHERN ILLINOIS	33/37	29/22	62-59	+3	17-42/21-53	.405/.396	8-15/4-13	.533/.308	20-30/13-23	.667/.565	35/34 +1	12/9	17/14	3/2	4/9	19/25
Indiana State	28/27	41/29	69-56	+13	20-55/20-61	.364/.328	5-14/5-25	.357/.200	24-31/11-21	.774/.524	47/39 +8	10/7	12/8	1/9	4/2	22/23
TEXAS A&M-CORPUS CHRISTI	27/24	29/38	56-62	(6)	21-51/24-48	.412/.500	3-11/5-13	.273/.385	11-21/9-14	.524/.643	31/32 (1)	16/14	13/14	1/0	6/8	16/18
NORTH CAROLINA A&T	20/21	37/33	57-54	+3	13-38/21-51	.342/.412	5-15/5-16	.333/.313	26-34/7-12	.765/.583	31/29 +2	7/10	19/20	3/5	8/13	15/24
Mississippi State	27/37	23/38	50-75	(25)	20-55/30-54	.364/.556	5-20/8-17	.250/.471	5-13/7-9	.385/.778	24/39 (15)	4/17	11/14	3/5	4/4	12/16
Bradley	27/34	33/23	60-57	+3	23-47/19-46	.489/.413	6-19/9-24	.316/.375	8-14/10-16	.571/.625	21/38 (17)	13/10	12/19	2/1	5/4	19/18
ROCKHURST	33/21	47/27	80-48	+32	26-53/19-51	.491/.373	7-14/5-14	.500/.357	21-30/5-7	.700/.714	34/30 +4	18/11	10/22	2/4	10/6	10/27
Wichita State	25/45	27/36	52-81	(29)	15-42/28-52	.357/.538	5-14/10-18	.357/.556	17-25/15-21	.680/.714	20/41 (21)	9/20	15/15	5/4	8/5	18/23
SOUTH DAKOTA STATE	24/25	31/37	55-62	(7)	19-57/21-41	.333/.512	2-19/8-13	.105/.615	15-24/12-19	.625/.632	31/35 (4)	11/16	14/22	1/8	11/6	25/25
SIUE	37/34	30/27	67-61	+6	23-42/23-56	.548/.411	3-10/5-14	.300/.357	18-28/10-15	.643/.667	28/29 (1)	16/11	18/16	6/2	6/8	18/26
TEXAS PAN-AMERICAN	36/26	39/43	75-69	+6	22-47/22-51	.468/.431	7-17/7-16	.412/.438	24-31/18-24	.774/.750	27/36 (9)	18/12	8/14	3/5	6/2	17/24
VERMONT	25/24	33/31	58-55	+3	23-54/21-43	.426/.488	4-9/3-14	.444/.214	8-14/10-15	.571/.667	36/22 +14	17/11	12/12	2/4	6/6	17/16

Note: Game totals are displayed in the format TEAM/OPPONENT for each category

OVERALL STATISTICS

@SaintLouisMBB
Saint Louis Combined Team Statistics (as of Dec 21, 2014)
All games

RECORD:	OVERALL	HOME	AWAY	NEUTRAL
ALL GAMES	8-4	6-2	1-1	1-1
CONFERENCE	0-0	0-0	0-0	0-0
NON-CONFERENCE	8-4	6-2	1-1	1-1

#	Player	gp-gs	min	avg	Total		3-Point		F-Throw		Rebounds				pf	dq	a	to	blk	stl	pts	avg
					fg-fga	fg%	3fg-fga	3fg%	ft-fga	ft%	off	def	tot	avg								
02	MCBROOM, Austin	12-12	322	26.8	42-106	.396	25-51	.490	22-29	.759	6	14	20	1.7	12	0	21	18	0	16	131	10.9
03	YACOUBOU, Ash	12-12	293	24.4	41-103	.398	3-22	.136	27-39	.692	17	40	57	4.8	30	1	14	21	2	13	112	9.3
04	YARBROUGH, Milik	12-3	228	19.0	38-72	.528	1-6	.167	19-41	.463	23	33	56	4.7	17	0	19	19	6	8	96	8.0
32	CRAWFORD, Mike	12-0	215	17.9	23-47	.489	7-17	.412	22-29	.759	4	8	12	1.0	13	0	9	13	1	6	75	6.3
11	REYNOLDS, Miles	12-0	159	13.3	9-32	.281	2-11	.182	38-50	.760	2	18	20	1.7	17	1	11	13	1	9	58	4.8
25	GILLMANN, Austin	12-1	171	14.3	22-39	.564	7-16	.438	4-8	.500	5	17	22	1.8	9	0	12	9	2	3	55	4.6
35	AGBEKO, Reggie	12-6	146	12.2	14-28	.500	0-0	.000	15-26	.577	6	24	30	2.5	13	0	1	12	0	2	43	3.6
00	BARTLEY, Marcus	12-2	207	17.3	13-36	.361	5-17	.294	10-16	.625	3	16	19	1.6	28	1	22	17	0	5	41	3.4
54	MANNING, John	11-9	180	16.4	11-29	.379	0-1	.000	14-16	.875	7	23	30	2.7	21	0	7	4	14	3	36	3.3
05	ROBY, Davell	11-10	208	18.9	9-38	.237	7-17	.412	9-14	.643	6	23	29	2.6	17	0	24	17	0	6	34	3.1
14	JOLLY, Brett	12-2	144	12.0	8-26	.308	2-11	.182	15-21	.714	6	9	15	1.3	24	0	4	7	5	1	33	2.8
15	LANCONA, Tanner	11-3	127	11.5	12-27	.444	1-8	.125	2-6	.333	3	10	13	1.2	7	0	7	5	1	6	27	2.5
Team												27	15	42				6				
Total.....		12	2400		242-583	.415	60-177	.339	197-295	.668	115	250	365	30.4	208	3	151	161	32	78	741	61.8
Opponents.....		12	2398		269-607	.443	74-197	.376	127-196	.648	128	276	404	33.7	265	8	148	190	49	73	739	61.6

TEAM STATISTICS	SLU	OPP	Date	Opponent	Score	Att.
SCORING	741	739	11/15/14	SOUTHERN ILLINOIS	w 62-59	10015
Points per game	61.8	61.6	11/18/14	at Indiana State	w 69-56	4348
Scoring margin	+0.2	-	! 11/23/14	TEXAS A&M-CORPUS CHRISTI	L 56-62	6620
FIELD GOALS-ATT	242-583	269-607	! 11/25/14	NORTH CAROLINA A&T	w 57-54	4507
Field goal pct	.415	.443	! 11/28/14	vs Mississippi State	L 50-75	2385
3 POINT FG-ATT	60-177	74-197	! 11/29/14	vs Bradley	w 60-57	2867
3-point FG pct	.339	.376	12/02/14	ROCKHURST	w 80-48	5290
3-pt FG made per game	5.0	6.2	12/06/14	at Wichita State	L 52-81	15004
FREE THROWS-ATT	197-295	127-196	12/09/14	SOUTH DAKOTA STATE	L 55-62	5102
Free throw pct	.668	.648	12/13/14	SIUE	w 67-61	6032
F-Throws made per game	16.4	10.6	12/17/14	TEXAS PAN-AMERICAN	w 75-69	5173
REBOUNDS	365	404	12/21/14	VERMONT	w 58-55	6818
Rebounds per game	30.4	33.7				
Rebounding margin	-3.2	-				
ASSISTS	151	148				
Assists per game	12.6	12.3				
TURNOVERS	161	190				
Turnovers per game	13.4	15.8				
Turnover margin	+2.4	-				
Assist/turnover ratio	0.9	0.8				
STEALS	78	73				
Steals per game	6.5	6.1				
BLOCKS	32	49				
Blocks per game	2.7	4.1				
ATTENDANCE	49557	24604				
Home games-Avg/Game	8-6195	2-9676				
Neutral site-Avg/Game	-	2-2626				

! = Corpus Christi Coastal Classic
 * = A-10 Game

Score by Periods	1st	2nd	Totals
Saint Louis	342	399	741
Opponents	355	384	739